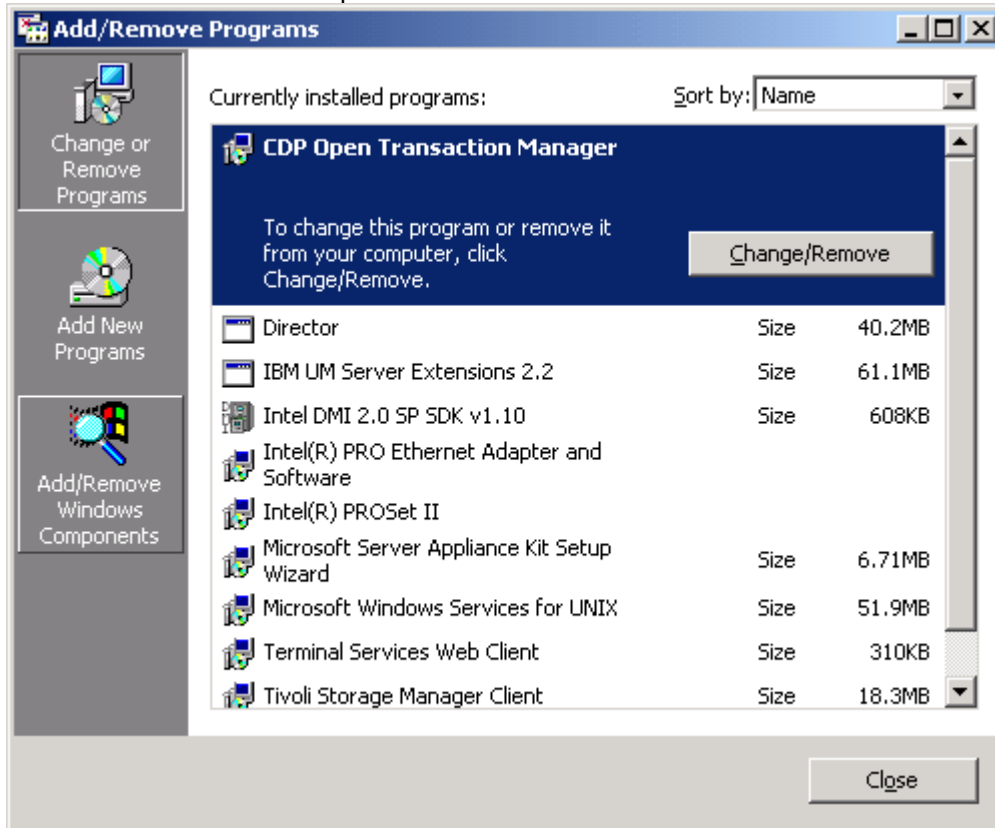


This describes how to set up AppleTalk Services on a single node IBM NAS Appliance.

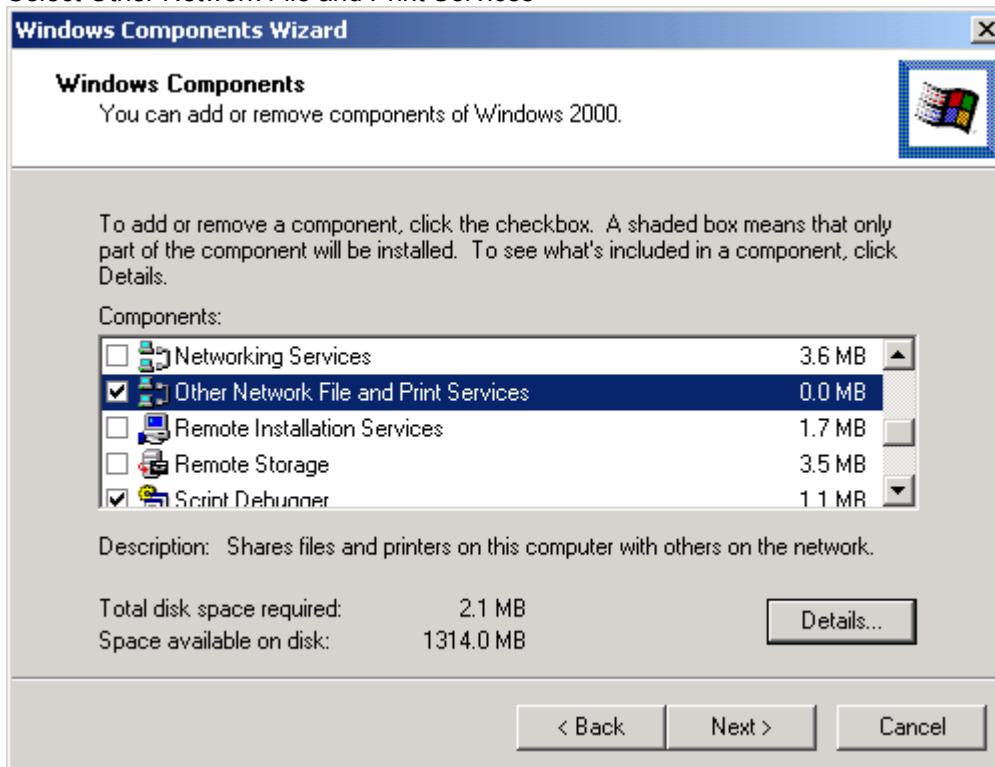
### Step 1

First objective is to go to Start/Settings/Control Panel/Add/Remove Programs/Add Remove Windows Components.



### Step 1a

Select Other Network File and Print Services

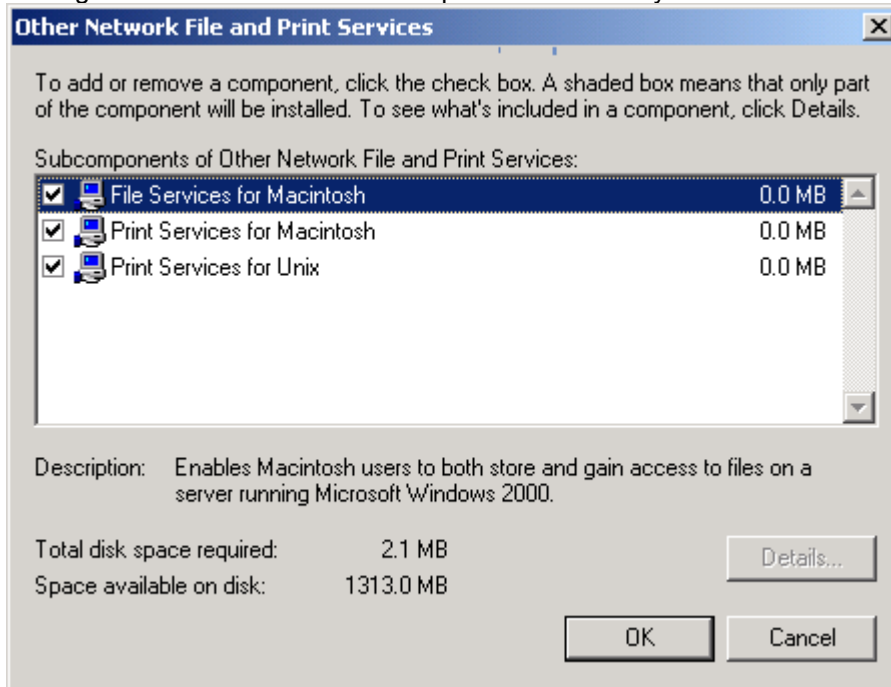


### Step 1b

Hit the details button and select the options you need.

At least "File Services for Macintosh"

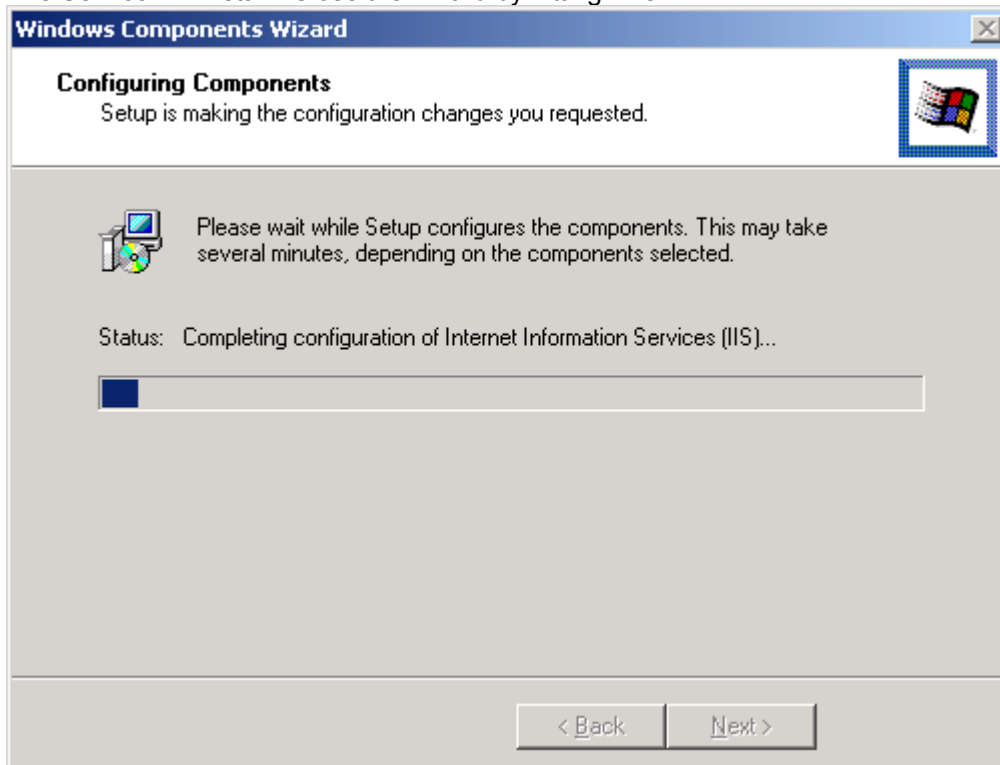
Adding these services also adds the protocol availability to the Network Interfaces



### Step 1c

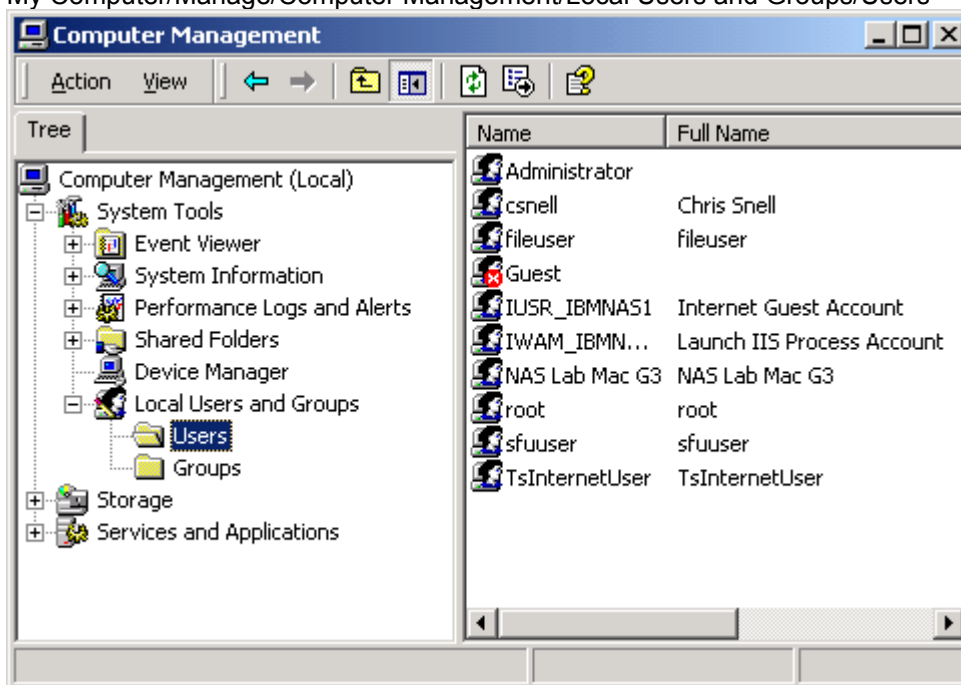
Hit OK then next and accept the Remote Admin mode then hit Next

The Service will install. Close the wizard by hitting finish.



## Step 2

Next, ensure you have set up the proper Users and groups by Right clicking My Computer/Manage/Computer Management/Local Users and Groups/Users



## Step 2a

Select Action/New User. Create and set up users properties for the intended Share.

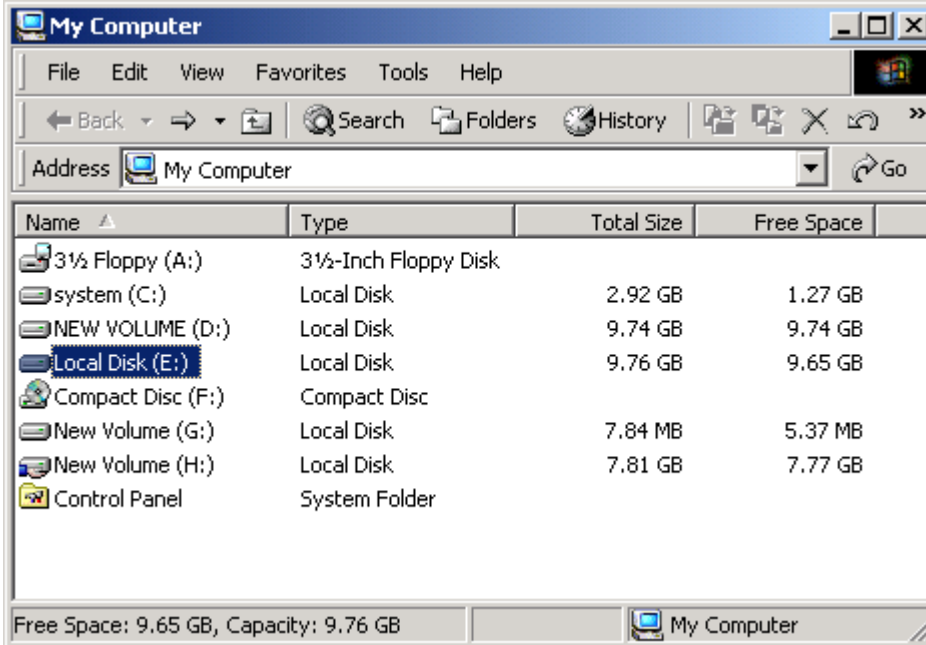
The 'New User' dialog box contains the following fields and options:

- User name: [Text Input]
- Full name: [Text Input]
- Description: [Text Input]
- Password: [Text Input]
- Confirm password: [Text Input]
- User must change password at next logon
- User cannot change password
- Password never expires
- Account is disabled

Buttons: Create, Close

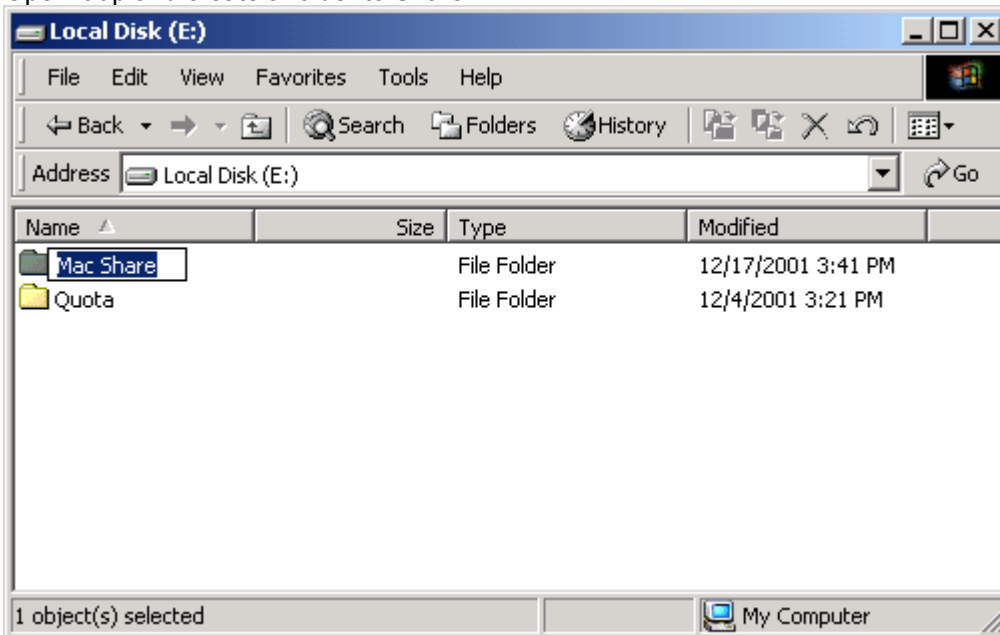
### Step 3

Go to My Computer and select which Volume you want to use in the Mac Share.



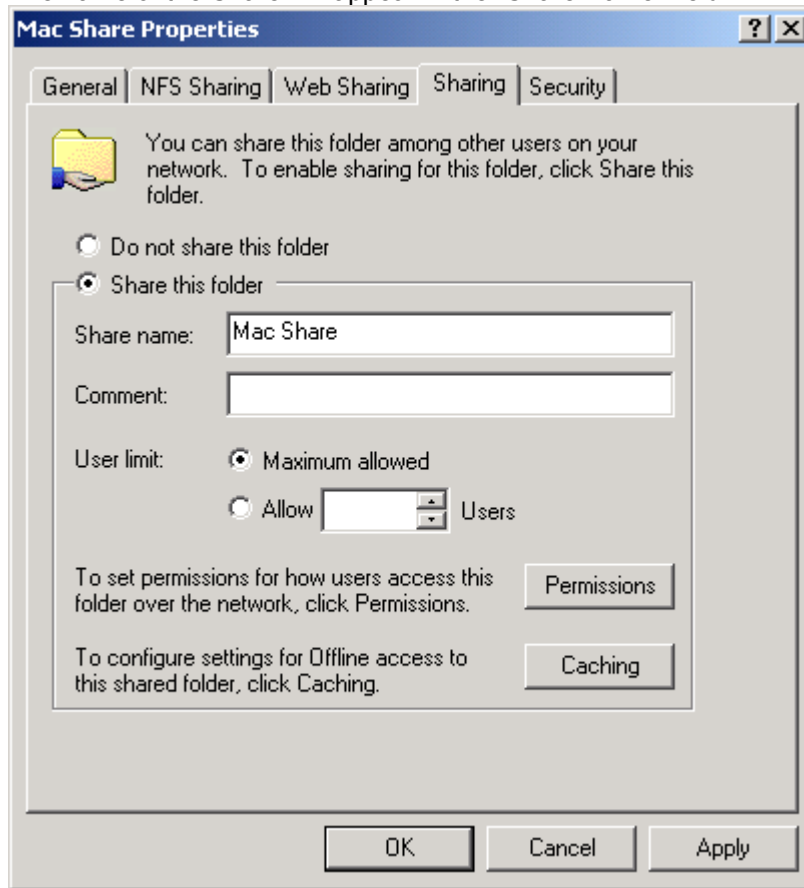
### Step 3a

Open it up and create a folder to Share.



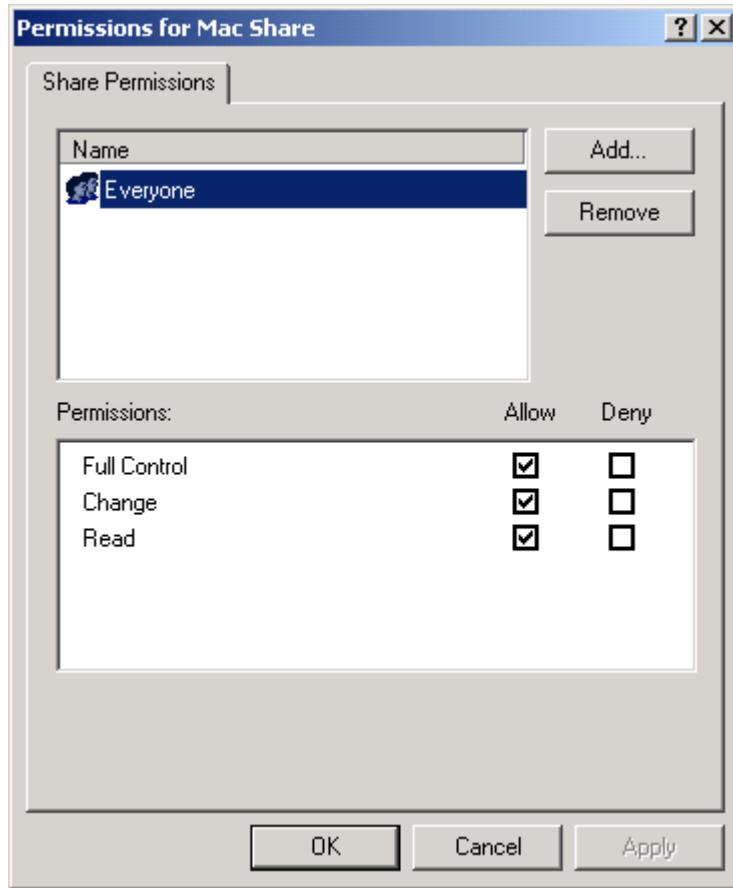
### Step 3b

Right click the volume and hit properties. Then select the Share this Folder Option  
The name of the Share will appear in the "Share Name" field.



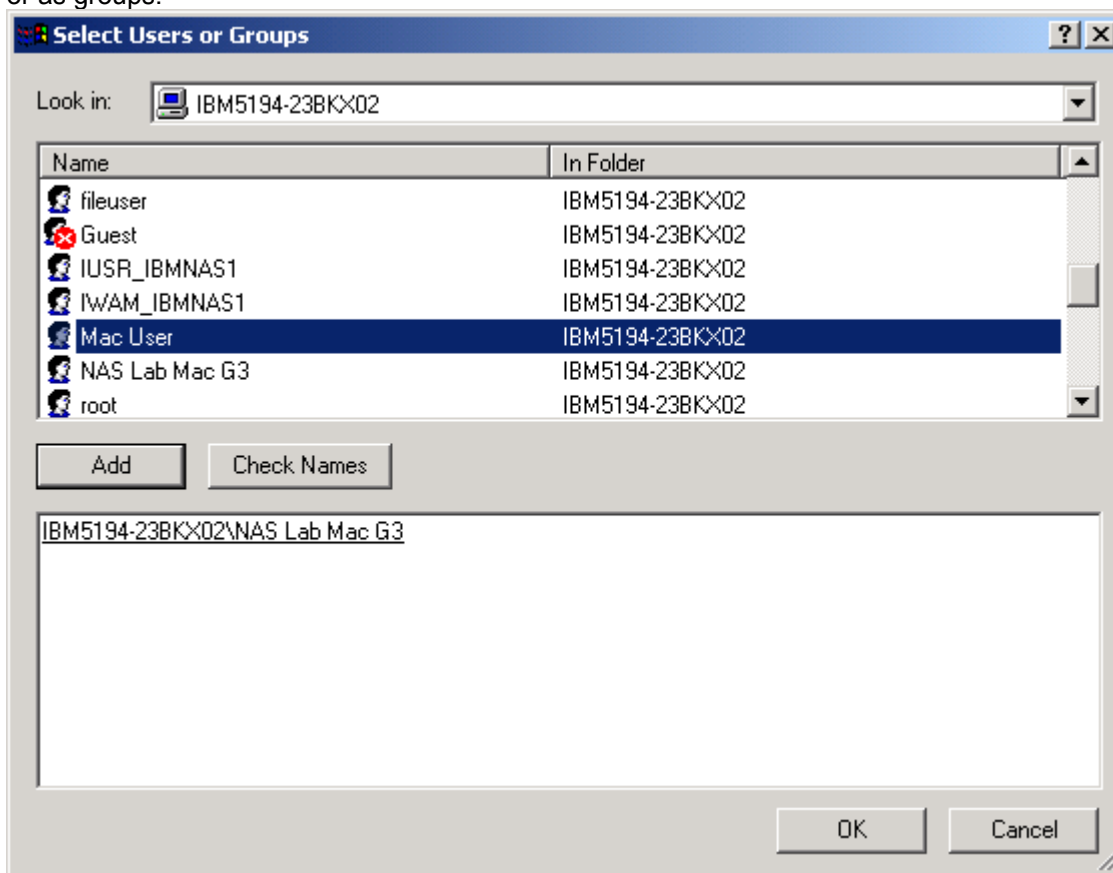
**Step 3c**

Select the Permission's Button



### Step 3e

Hit Add and Find your users and add them. This can be done individually or as groups.



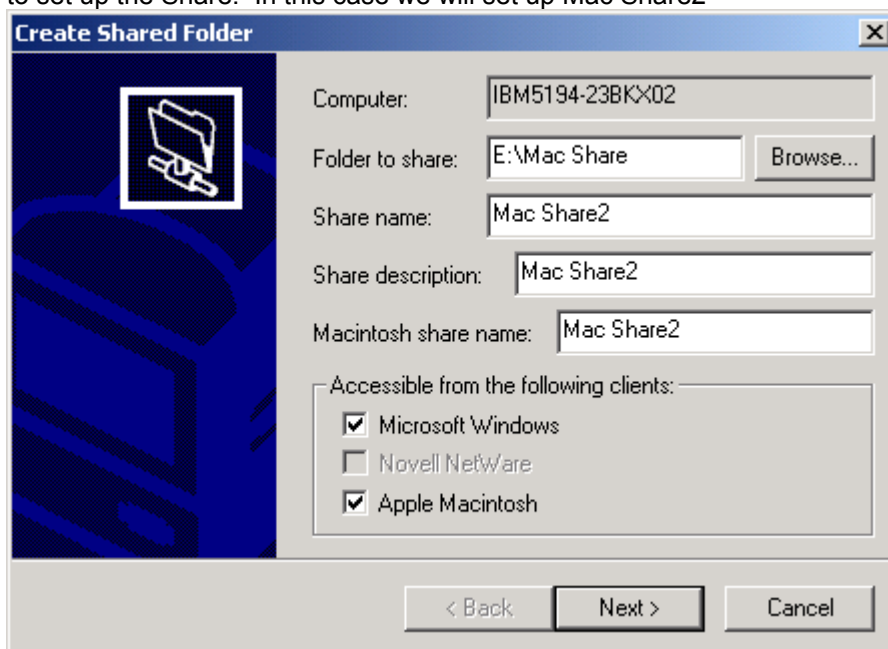
### Step 4

You can also do this from Computer Management

File Sharing:

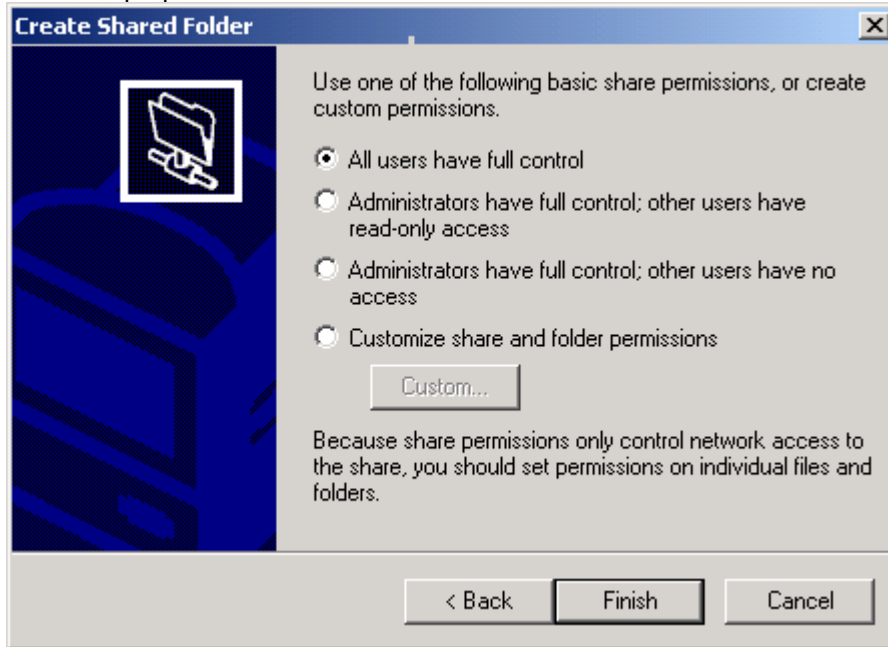
The same effect can be achieved by going to the Computer Management options for the Shared Folders/Shares/New File Share Name the share then browse the file to share.

Note Apple Macintosh option is available. Name the Share Name then browse to set up the Share. In this case we will set up Mac Share2



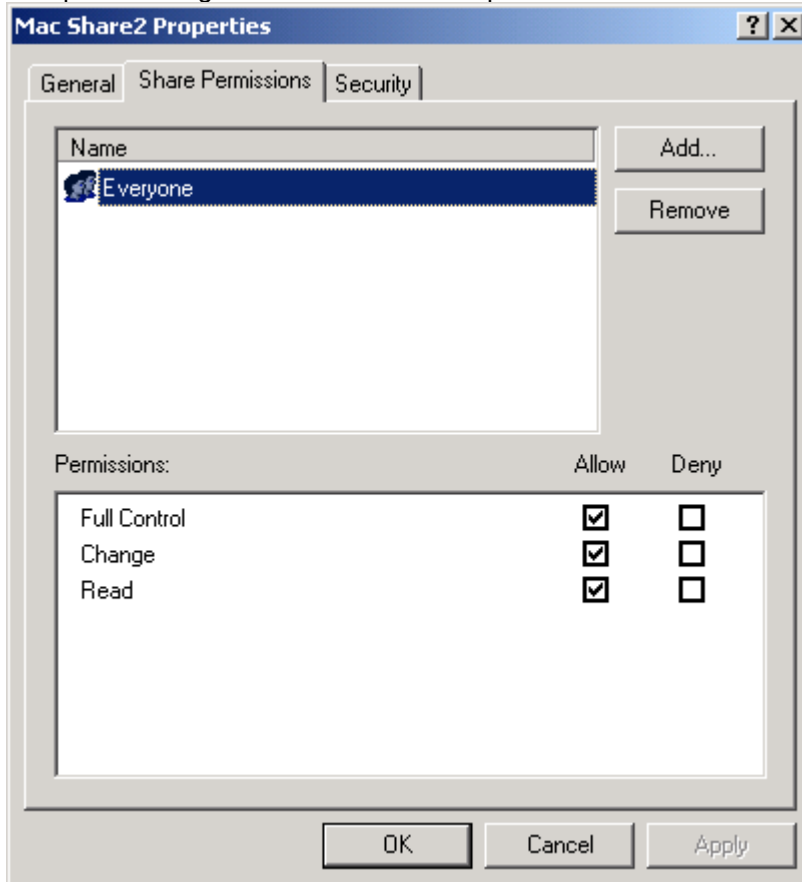
#### Step 4a

The User properties can be set here as well.



#### Step 4b

But you can not assign individual permission's unless you go to Computer Management/Mac Share2/Properties/Share Permission's/Add



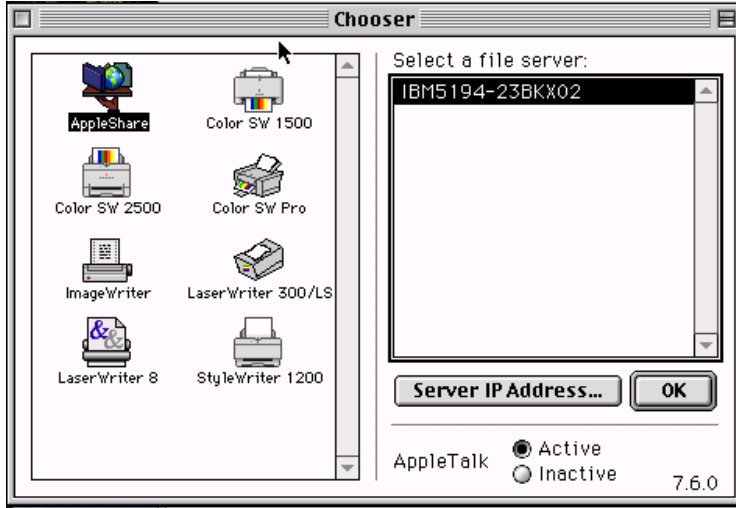


### Step 5

When you are finished with the Appliance set up, go to the connected Mac.

Ensure AppleTalk is Active and running

Select the AppleShare Icon in the Chooser. The NAS Appliance "file server" should show in the Chooser. Select the name of the server and hit OK.



### Step 5a

A new window will appear with the Machine name of the Macintosh

You need to set this up in the Appliance (Step 2 above) prior to this step.

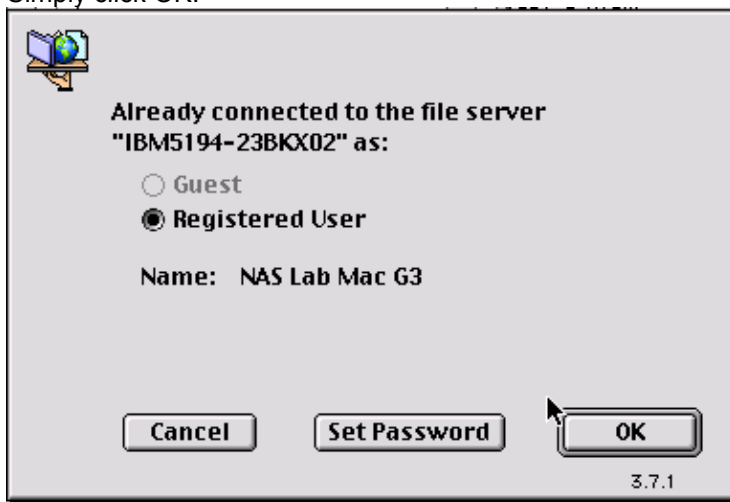
This name should be identified as a User in the Appliance.

Enter the assigned password and hit OK.



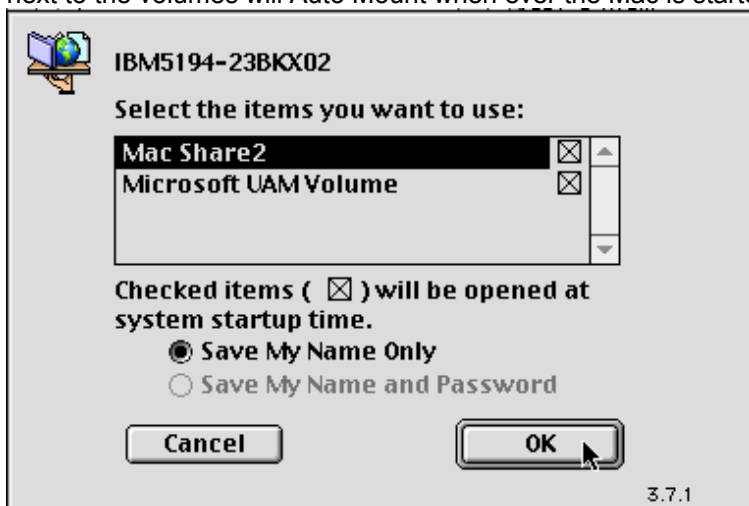
### Step 5b

If you already have a mounted volume, This window will show. Simply click OK.



### Step 5c

Note the Name of the Volumes you can mount. An X in the box next to the volumes will Auto Mount when ever the Mac is started.



There are several ways to connect the Mac to the NAS appliance. If the configuration will be established using IP, you will need to hit the Server IP Address button (Step 5 in the Chooser shown above) and enter the IP address of the Appliance.

### Seed Routing

In addition, on the Appliance you can set up AppleTalk Seed routing to establish Zones. You should only do this if you are using the Appliance as a local AppleTalk Router and need zones. If the network is being set up to use a formal Router, let the router establish the Zone.

This is the description of that process:

- 1) Enable Routing and Remote Services under the Administration Tools menu.
- 2) Find the adapter which the AppleTalk traffic will be routed through and select properties to configure the protocol.
- 3) Enable "Seed Routing" for the local network.
- 4) Put a network range in from 1 to 65000
- 5) Create a new zone and give it a logical name.
- 6) Your Mac should now see the Zone you established in the Chooser.