



System z Technology Update

Jim Stallings
General Manager, IBM System z



A New Era for Business

24 x 7

Global

Highly
networked



Mainframe: *Better for business*

- Security
- Reliability
- Automation
- Economy of scale



Today's mainframe

Four Enterprise-wide Roles of the Mainframe

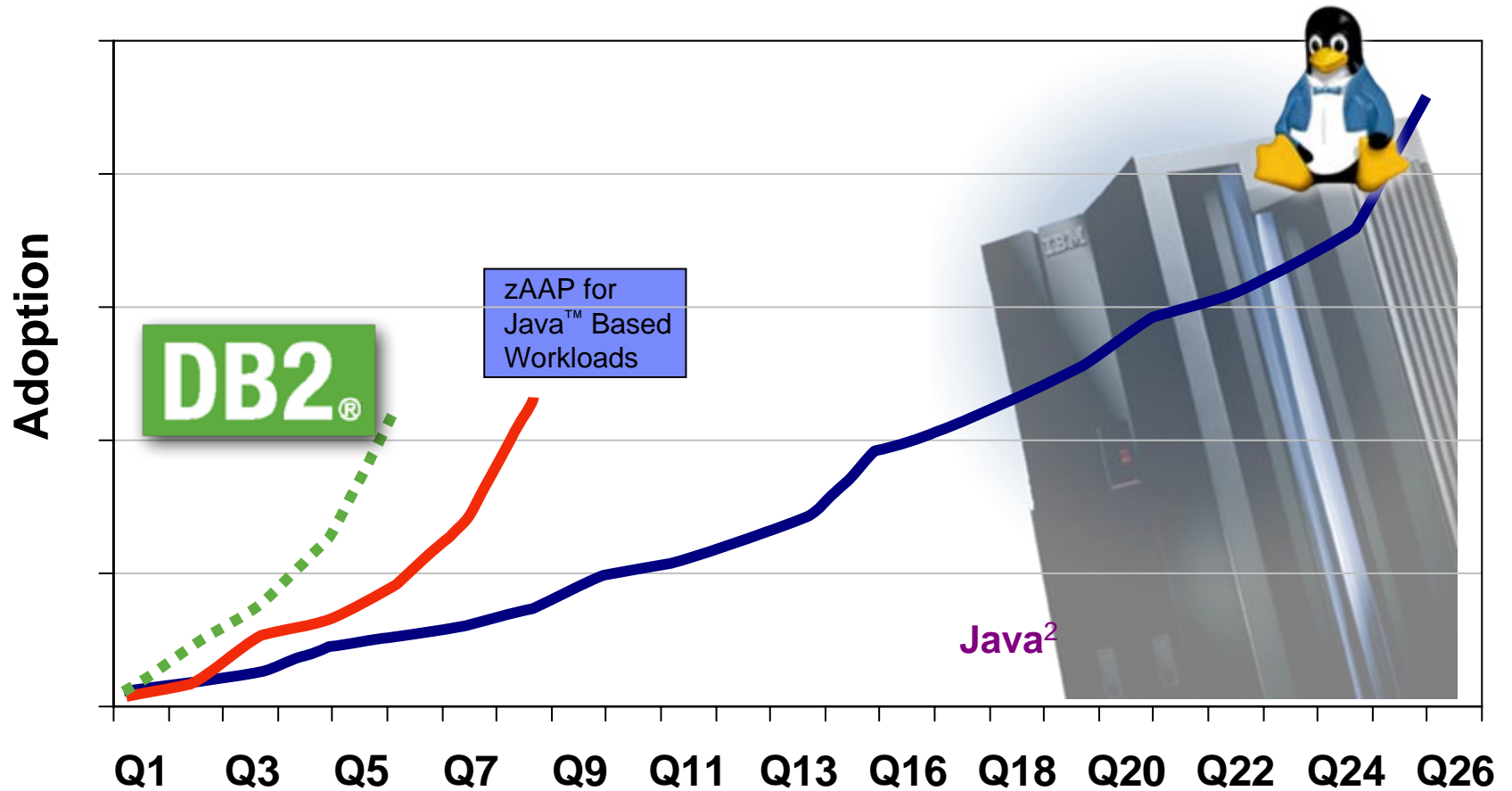
- Enterprise business resilience manager
- Enterprise security manager
- Enterprise workload manager
- Enterprise hub for data & SOA

If data is the life blood of the business . . .

then your data server is the heart of your SOA



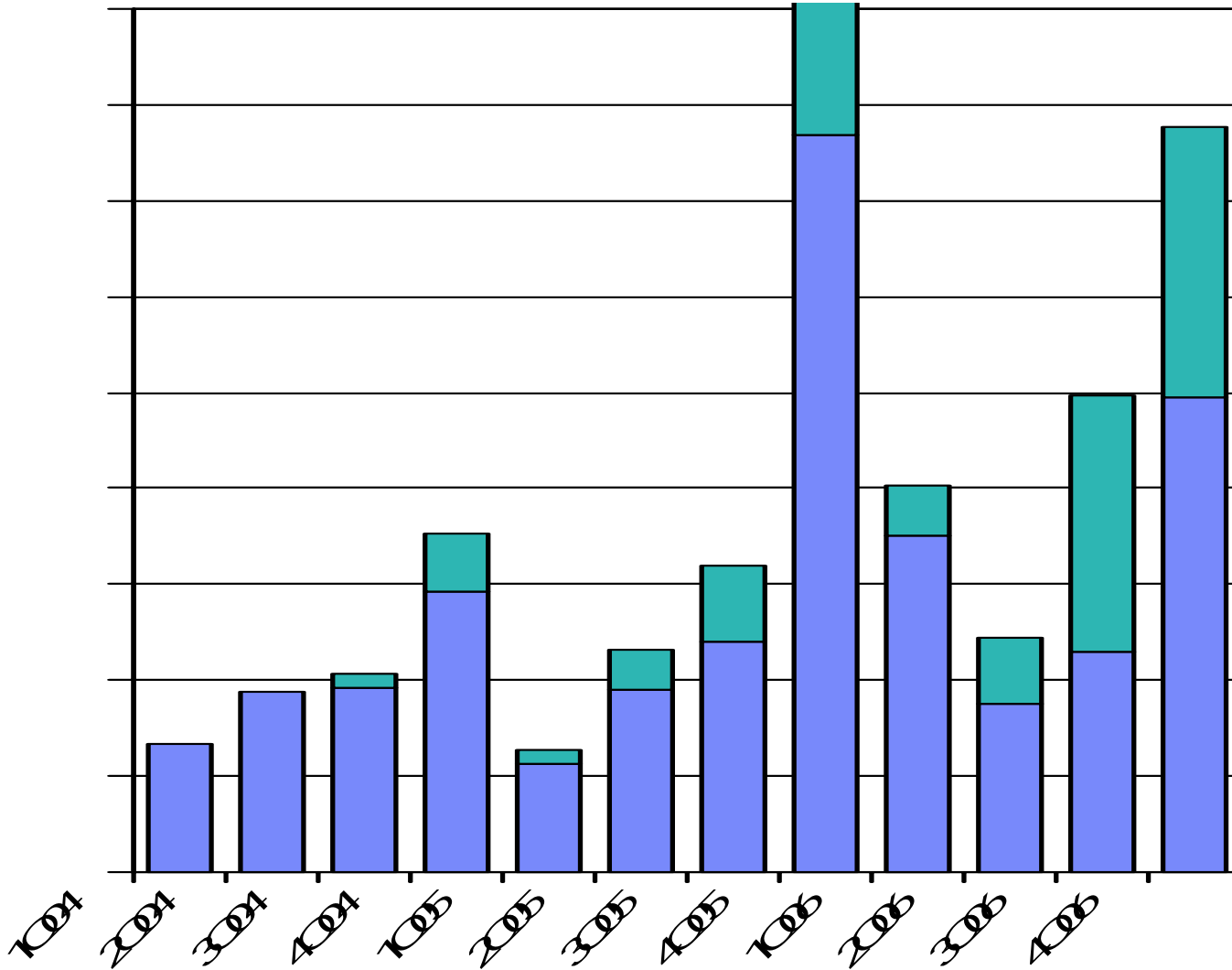
Dynamic Growth in New Workloads



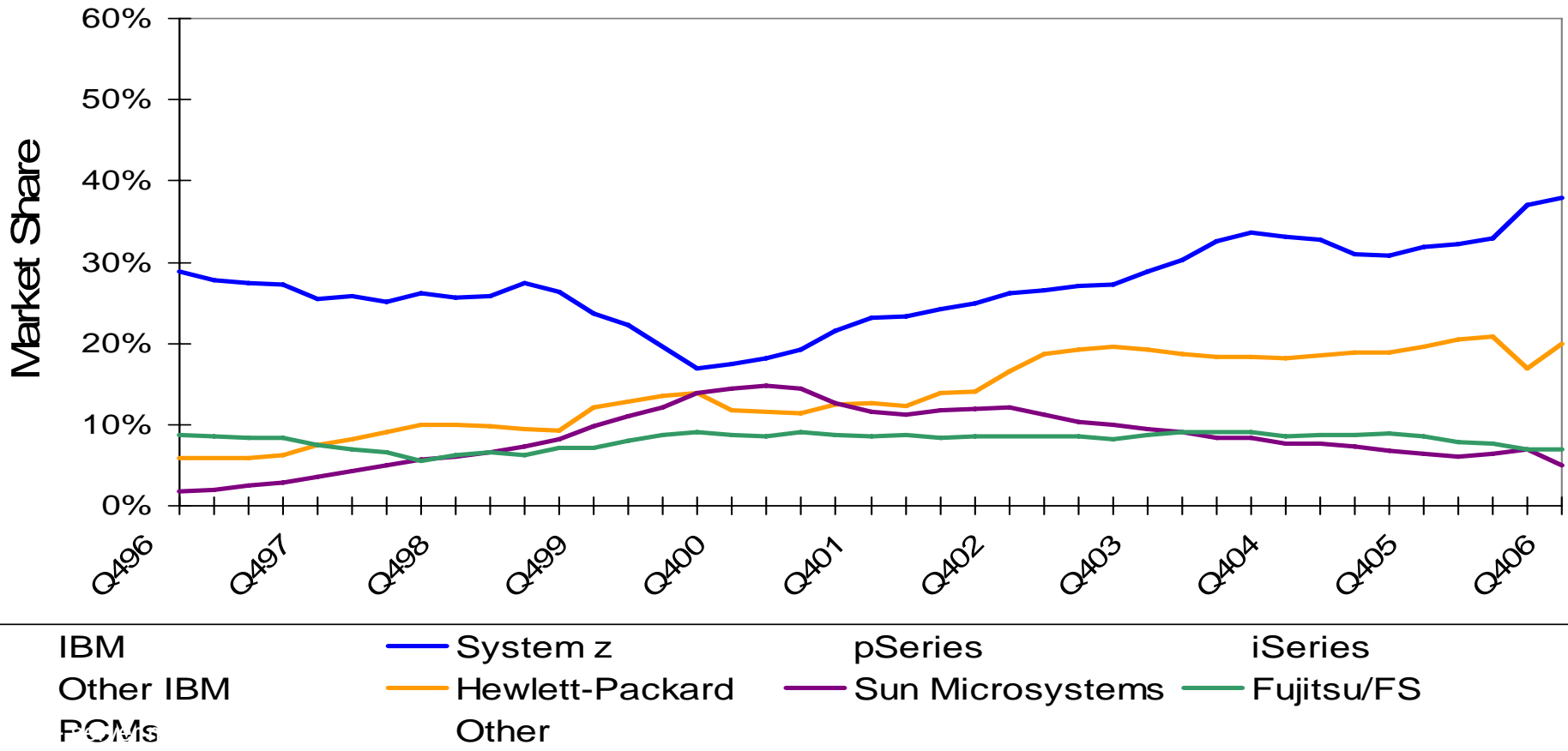
Source: IBM internal data

Specialty Engine Growth Trend

■ IFLs
■ zAAPs



Mainframe Market Share



2006 Major Milestones



4Q Largest Hardware Revenue
Quarter Since 4Q98

Top 25 Banks in the World

Record High for Market Share:
38%

Record Year for Specialty Engines

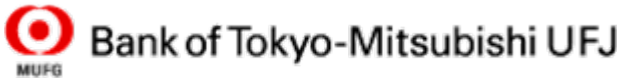
10 Million MIPS Installed

\$1 Billion in Revenue from SIs

First Online Game Client:
Hoplon Infotainment



New Customers and New Markets



Announced Yesterday...

“Sparkassen Informatik Signs Strategic Five-Year Contract with IBM”



- € 700 million continued investment in the mainframe
- 82.8 million customer accounts
- 30 billion transactions per year
- Enterprise-class SOA
- Performance and cost structure
- Flexibility for growth

Sparkassen Informatik | 

Key Drivers

Innovation explosion

Server Consolidation

India, China

Control



Integrated Security

ID Management

EAL5

Encryption Facility

Key
Management



Hoplon Infotainment



HOPLON
Infotainment



Nexxar



- ✓ Highly available and manageable
- ✓ Security, reliability, scalability and flexibility
- ✓ Support growth by acquisition business
- ✓ Server consolidation on Business Class
- ✓ Reduced labor costs by 75%

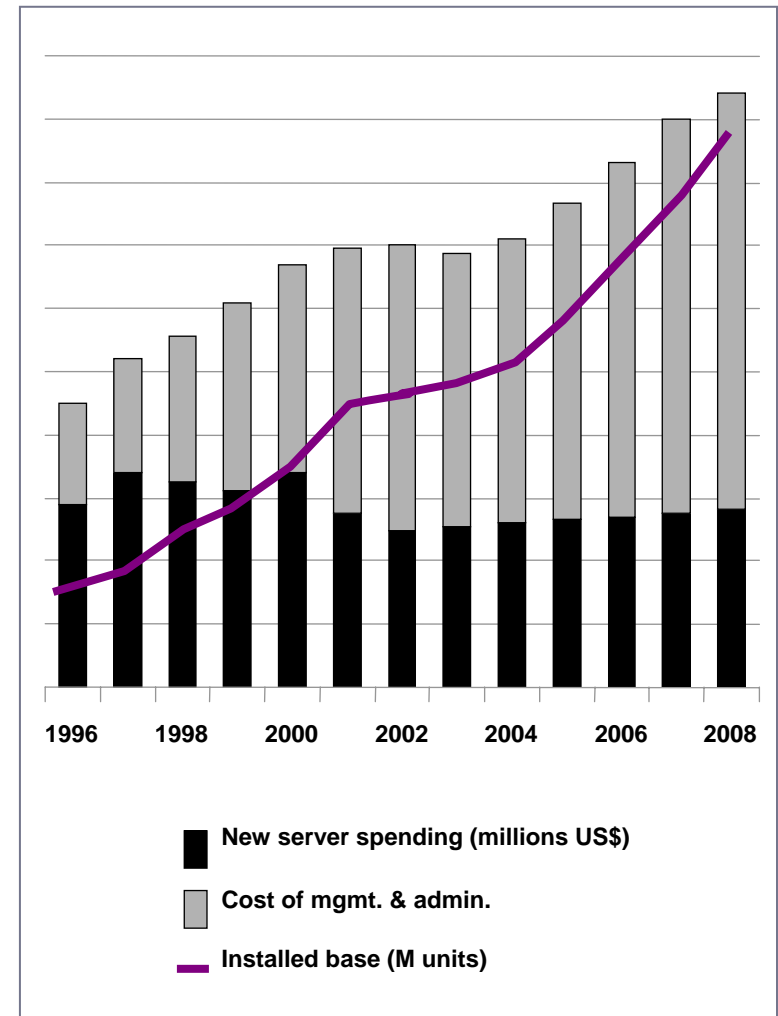


The image features a dark blue background with vertical columns of binary code (0s and 1s) on the left and right sides. In the center-left, there is a stylized representation of an IBM System z9 server rack. The rack is dark blue with a lighter blue vertical strip on the right side. The text 'IBM' is visible on the left side of the rack, and 'System z9' is visible on the right side. The overall aesthetic is technical and digital.

Mainframe Economics

IT Complexity Drives Many Hidden Costs

- Managing today's mixed IT platform environments can be complex and costly
 - ▶ Thousands of servers
 - ▶ Underutilized assets
 - ▶ Thousands of software licenses
 - ▶ Thousands of distributed control points
 - ▶ Ineffective costing methodologies
- **The Result**
 - ▶ Massive complexity
 - ▶ Spiraling people costs
 - ▶ Increased availability and downtime costs
 - ▶ Increased security breach costs
 - ▶ Sub-optimal investment choices



System z9 – Managing Growth and Complexity



System z9 Business Class

Lowest entry price point ever for
System z

Perfect fit for a growing business

Runs Java, Linux, DB2, WebSphere

Shanghai

Breakthrough Economics

FNBO consolidated on a single IBM mainframe and IBM BladeCenter®

- 30 UNIX® servers
- 500 Applications
- 560 Microsoft® Windows® servers

Results:

- 70% improvement in hardware utilization
- Savings: \$2 million/yr average



First National Bank
Omaha

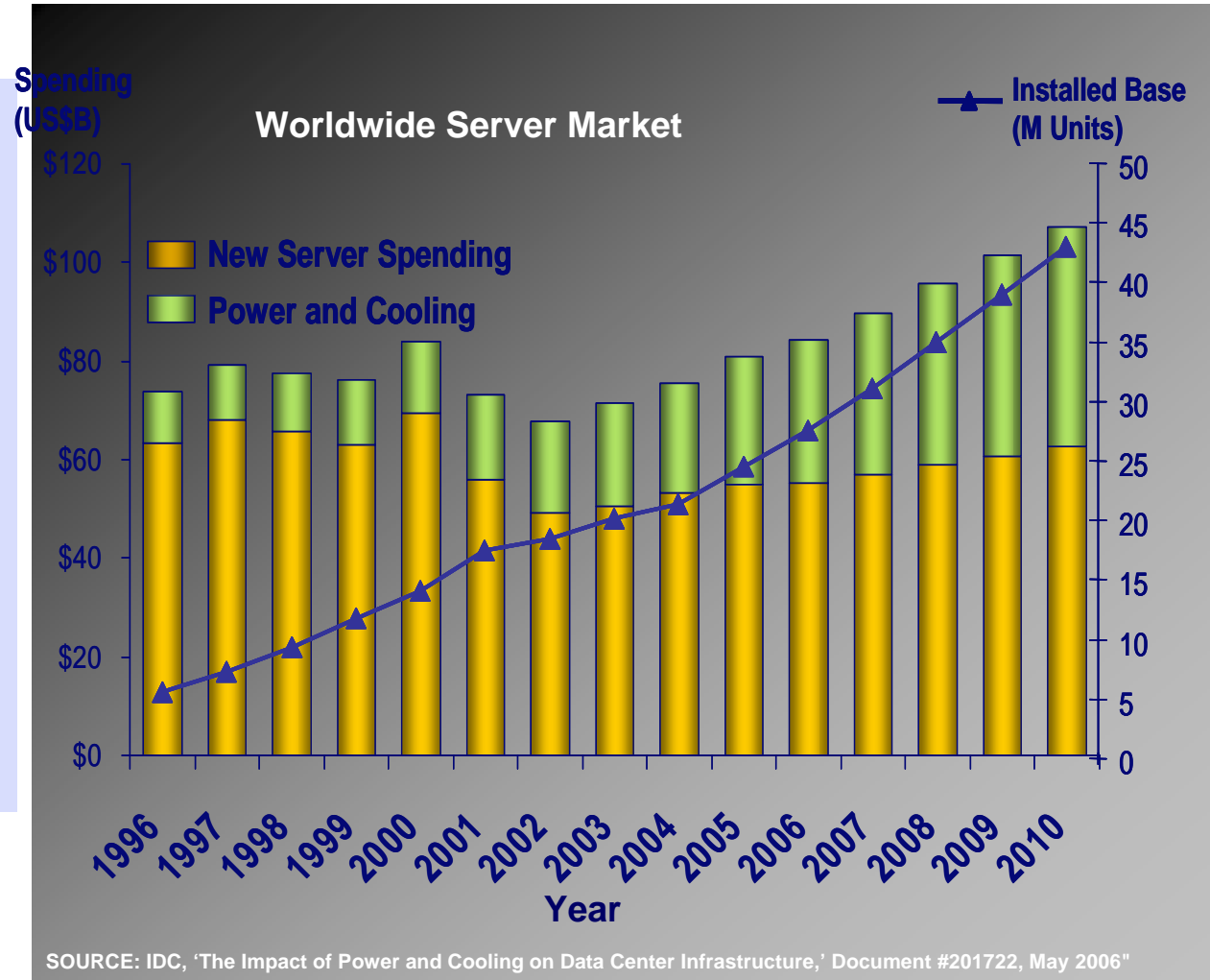


The New Economics of IT

- Power/cooling spend may eventually exceed new server spending

2000 – Raw processing “horsepower” is the primary goal, while the infrastructure to support it is assumed ready

2006 – Raw processing “horsepower” is a given, but the infrastructure to support deployment is a limiting factor



Energy Efficiency

*RFG analyst case study:
Retailer consolidated 600 x86
servers onto a single
mainframe*

- Eliminated an **entire floor** of servers
- Reduced the administrative staff by 10
- **Cut power and cooling costs by 80%**

ROBERT
FRANCES
GROUP



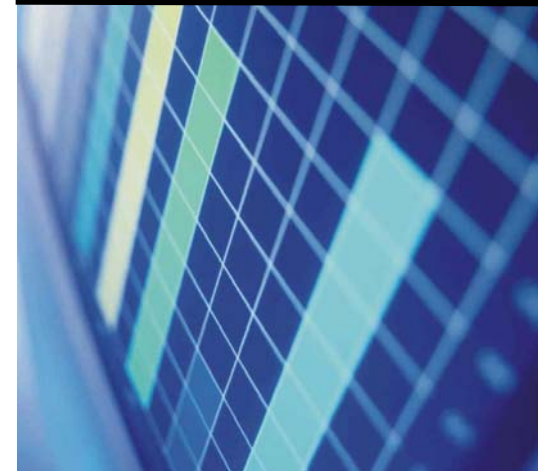
Nationwide saves \$15M with System z

TCO: \$15M savings over 3 years

- ▶ 80% reduction in data center floor space needs; power conservation
- ▶ 50% reduction in hardware & OS support efforts
- ▶ 70% average CPU utilization

Dynamic allocation of compute power

- ▶ Capacity on demand
- ▶ Tested 22 times capacity for Super Bowl 2006 Ad blitz traffic



Today's mainframe

Designed for data serving and SOA

Architecturally compatible

Operationally superior

If data is the life blood of the business . . .

then your data server is the heart of your SOA



Mainframe Ecosystem

IBM Academic Initiative

Customer councils

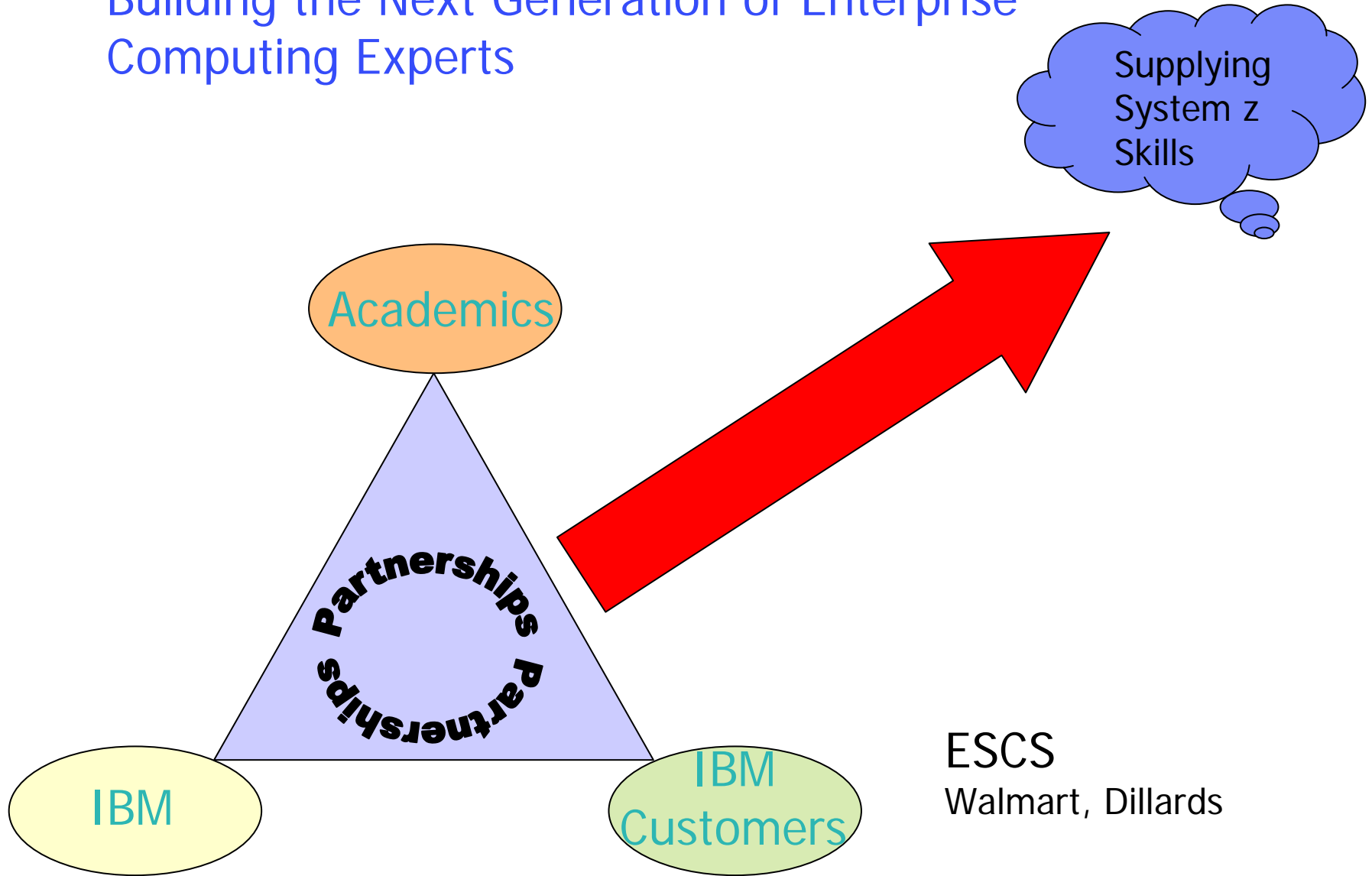
- 294 colleges and universities
- 23,000 students educated already
- Student contests – 2,500 students/300 schools

Partners

- 1,350 ISVs
- 1,500 mainframe partners



Building the Next Generation of Enterprise Computing Experts



ESCS
Walmart, Dillards



Mainframe Academic Initiative



**Fachhochschule
Bochum, Germany**



**ESIAL
Nancy, France**



**Universidad Politécnica
de Madrid (UPM), Spain**



**Kungliga Tekniska
Högskolan (KTH)**



**Czech Technical
University, Prague,
Czech Republic**



**Tshwane University of
Technology,
South Africa**



**Politecnico
Bari, Italy**



**University of Surrey,
Guildford, UK**

Strategic Investment

System z9

- ▶ \$1.2 billion
- ▶ 5,000 tech professionals

\$40M 



- ▶ Joint Initiative
- ▶ Expanded Technology

\$100M simplification¹

1. Planned investment



Summary

- Today's Mainframe: Better for Business
- New Workloads / Business Class
- Renewed Interest in the Mainframe
- Security, Economics, Power Efficiency
- Next Generation of Mainframe Eco-system