



IBM Software Group | WebSphere Software

# Service Oriented Architecture for System z9 and zSeries

Ed Boulay  
WW zSeries WebSphere Sales  
eboulay@us.ibm.com



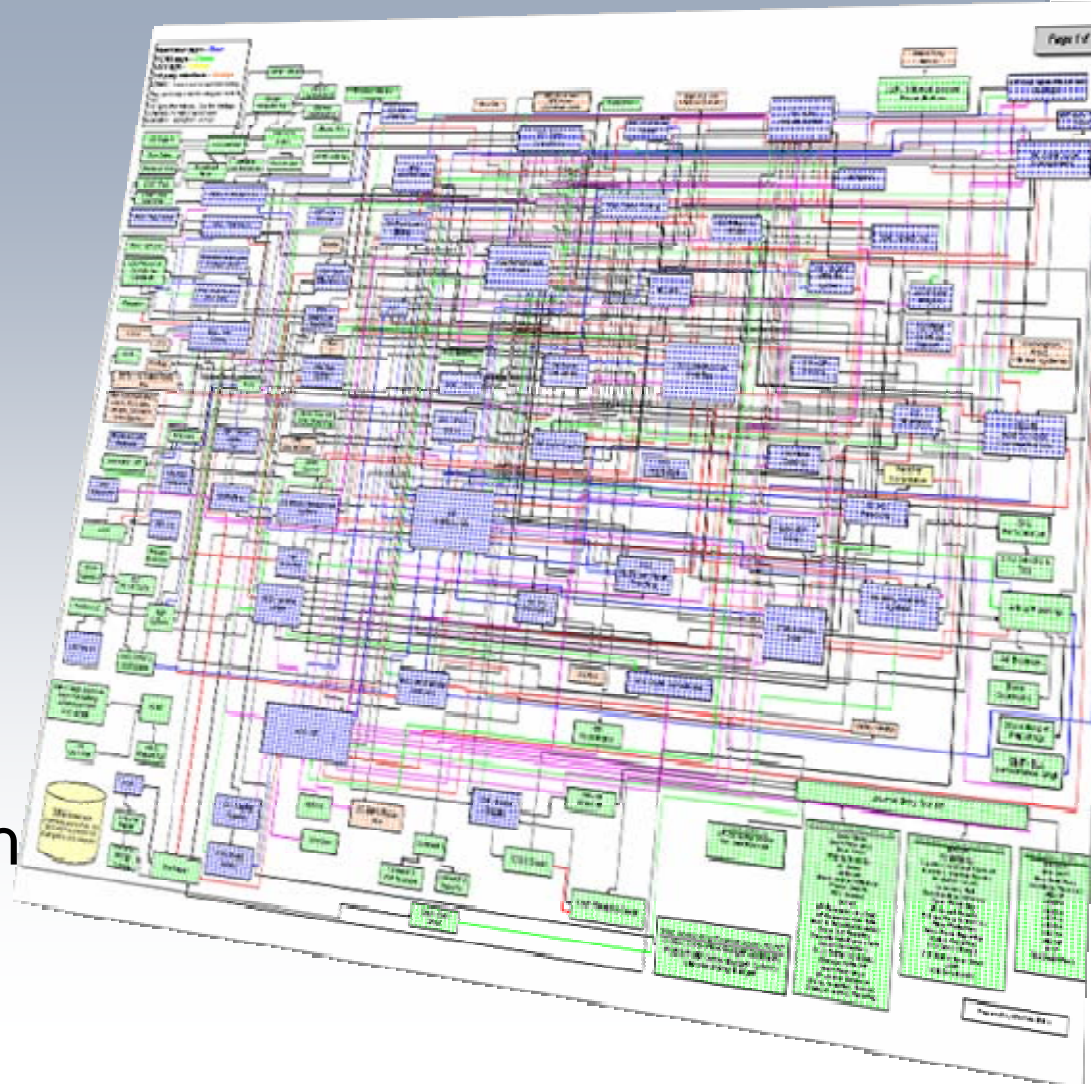
## Questions You Need to Consider

- What is Service Orientation and SOA and why is it important for your business?
- Is it real? Are customers really using it today?
- What are the core elements brought together under SOA?
- How can IBM help you get started?



## What are the barriers to business flexibility?

- Lack of business process standards
- Architectural policy limited
- Point application buys to support redundant LOB needs
- Infrastructure built with no roadmap



# What is SOA?

## ... a service?

A **repeatable business task** – e.g.,  
check customer credit;  
open new account

## ... service orientation?

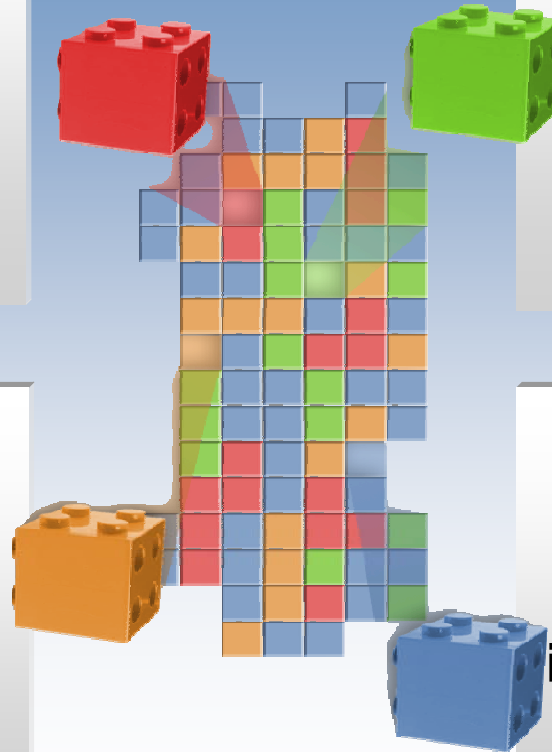
A way of integrating your  
**business as linked services**  
and the outcomes that  
they bring

## ... service oriented architecture (SOA)?

An IT **architectural style** that supports  
service orientation

## ... a composite application?

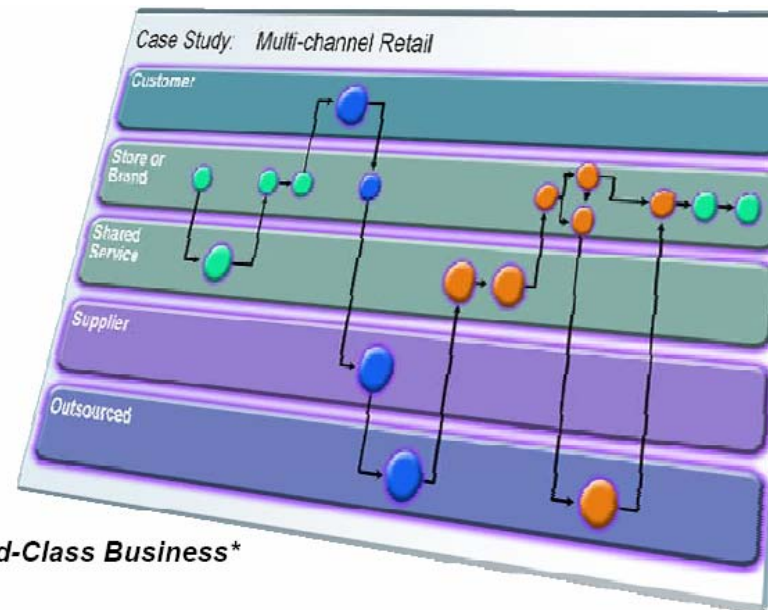
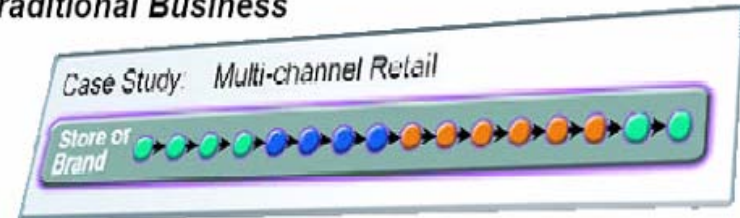
A set of **related & integrated** services that  
support a business  
process built on an SOA



## Why SOA for Business Flexibility and Reuse?

- **Economics:** globalization demands flexibility
- **Business processes:** changing quickly and sometimes outsourced
- **Growth:** at top of CEO agenda
- **Reusable assets:** can cut costs
- **Information:** greater availability
- **Crucial for flexibility and becoming an On Demand business**

*Traditional Business*



*Today's World-Class Business\**

# SOA builds flexibility on your current investments

*The next stage of integration*

## Messaging Backbone



- Point-to-Point connection between applications
- Simple, basic connectivity

## Enterprise Application Integration (EAI)

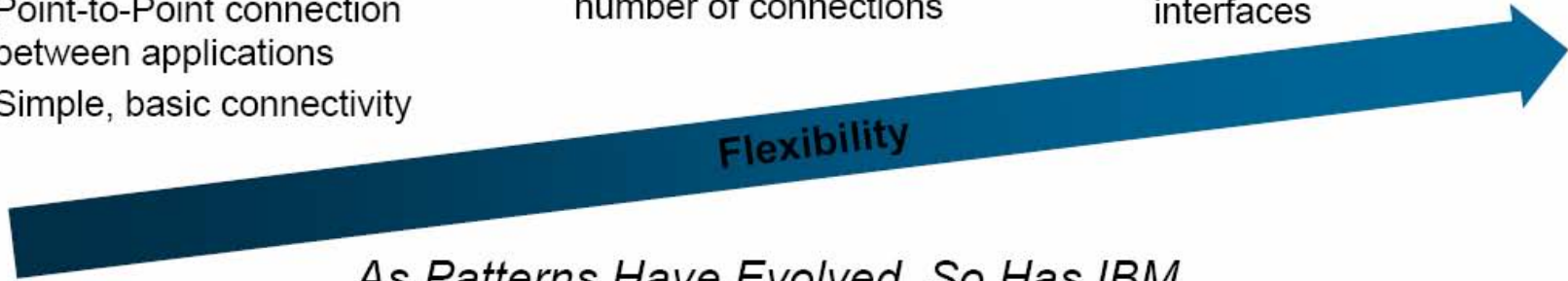


- EAI connects applications via a centralized hub
- Easier to manage larger number of connections

## Service Orientated Integration



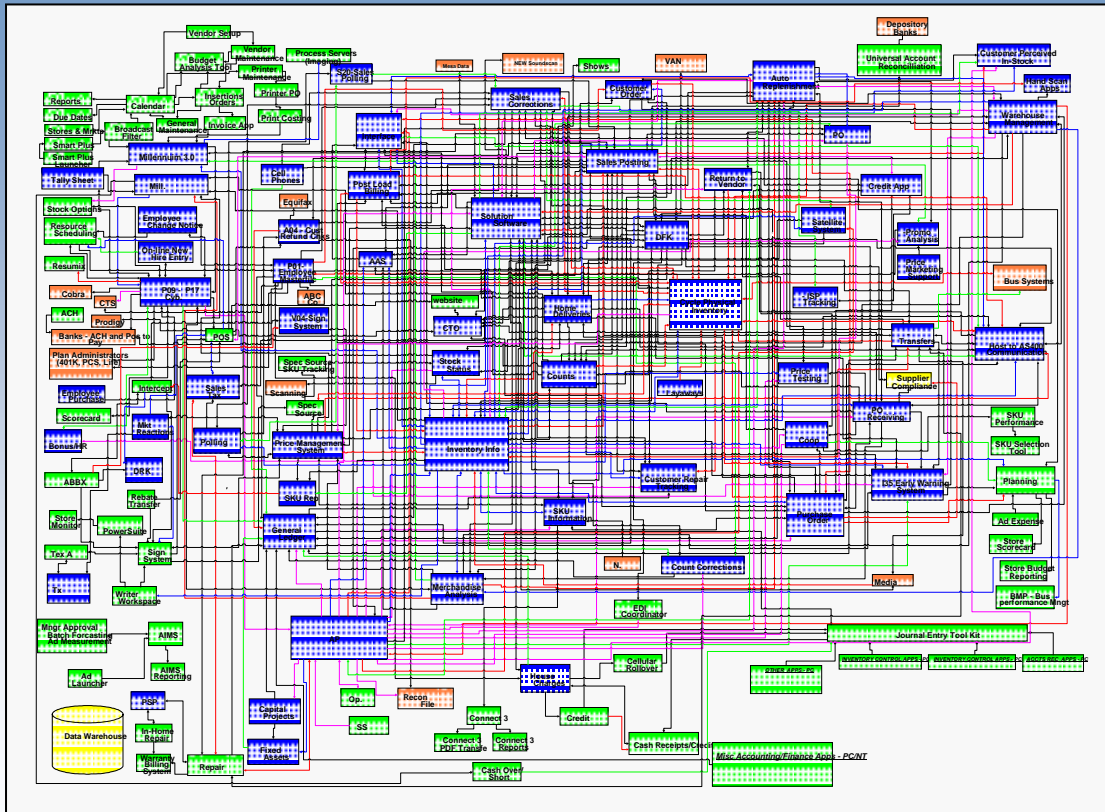
- Integration and choreography of services through an Enterprise Service Bus
- Flexible connections with well defined, standards-based interfaces



*As Patterns Have Evolved, So Has IBM*

# Problem -- typical topologies look like this.....

## Actual application topology for a company



What problem needs addressing?

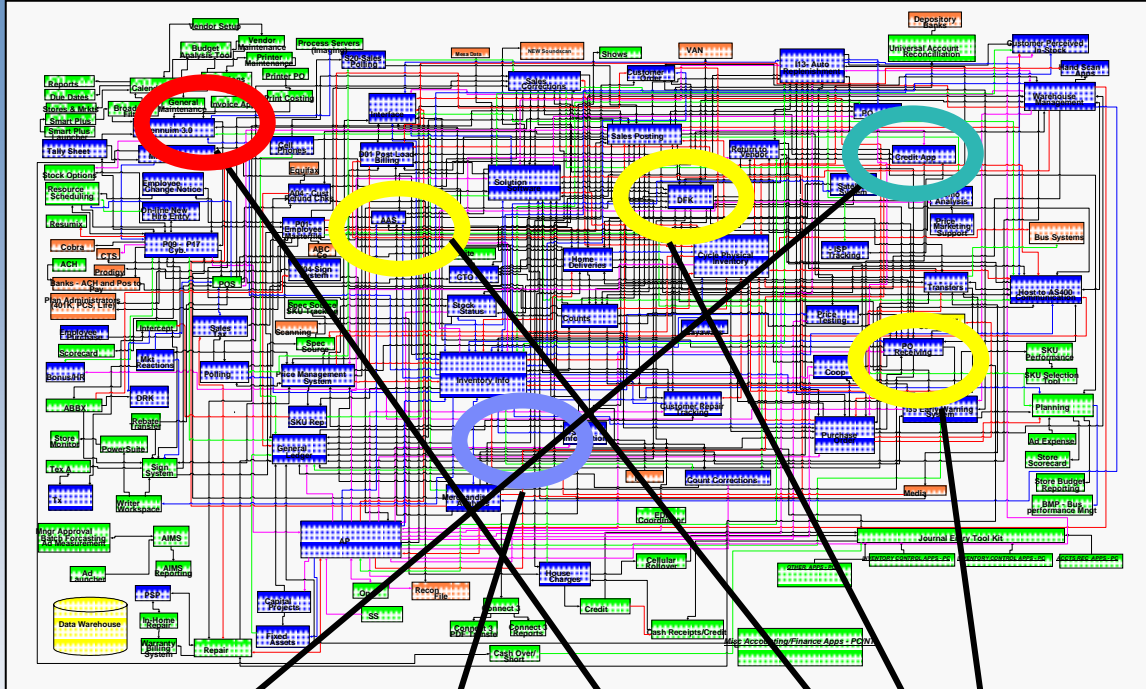
Building and maintaining application interfaces is difficult and expensive

“Point-to-point interfaces result in an ever-increasing maintenance burden.”

— Gartner Group

March 2005

# Create a Service from the various components



## Step 1

Identify the Business Service – the basic SOA building block

## Step 2

Locate the service components

## Step 3



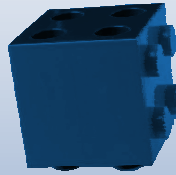
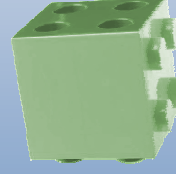
Construct the interface

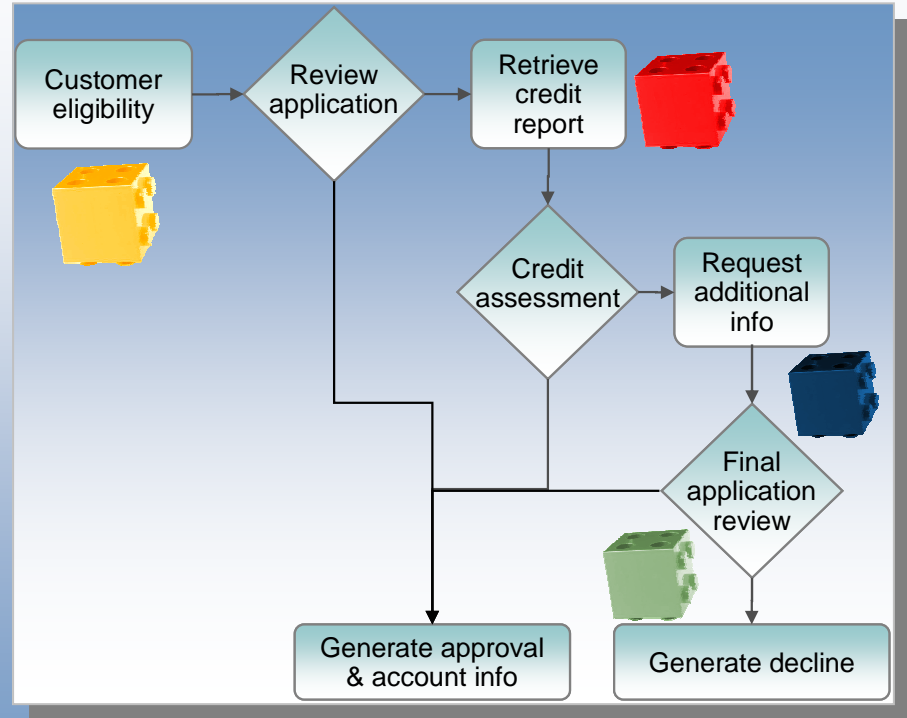
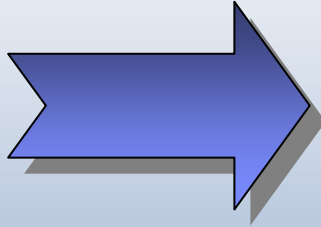
## Step 4

Repeat



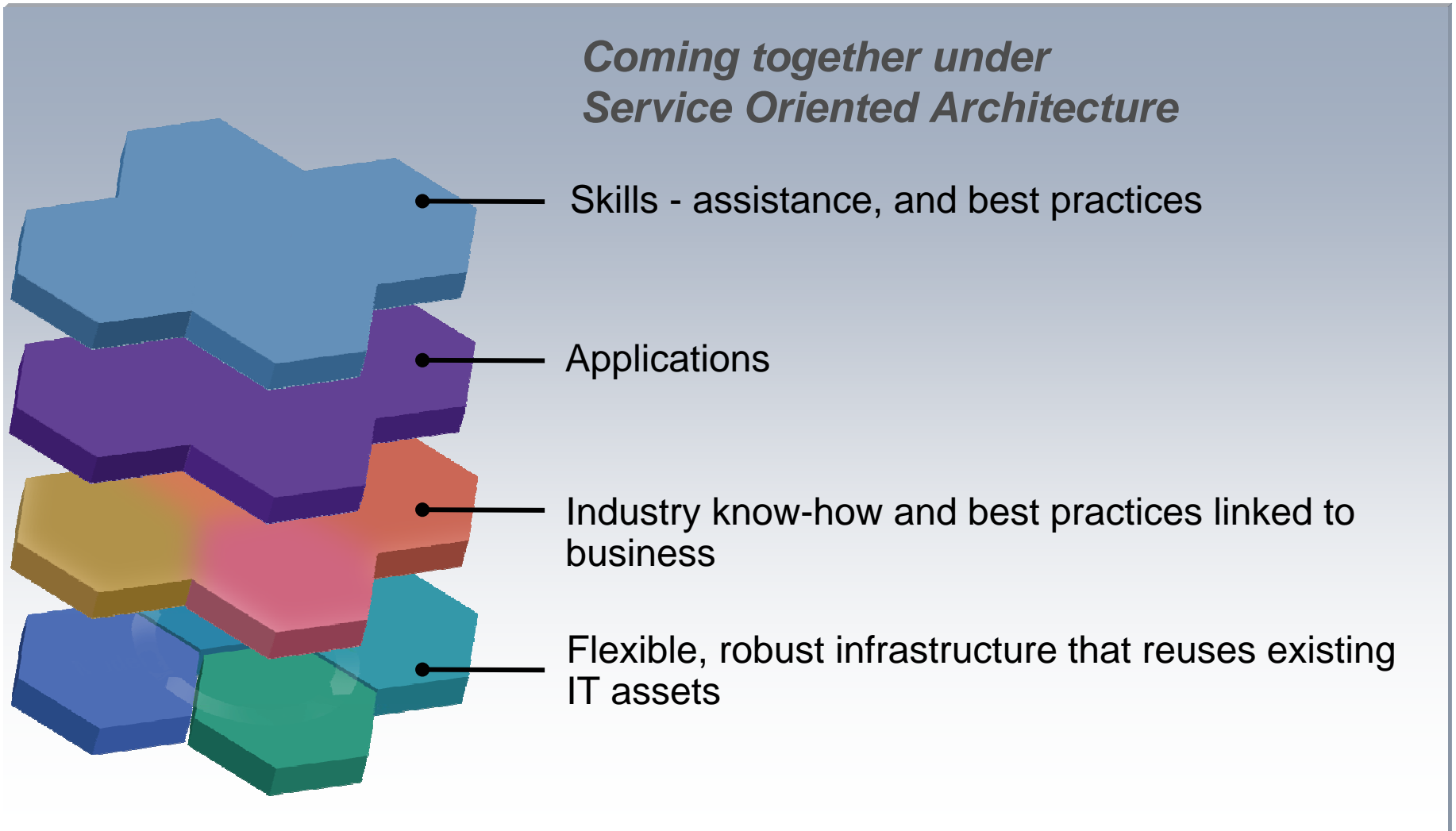
# Now we have rendered the application as services

-  **Determine Customer Eligibility**
-  **Retrieve Credit Report**
-  **Request additional info**
-  **Generate decline**
- Etc....**

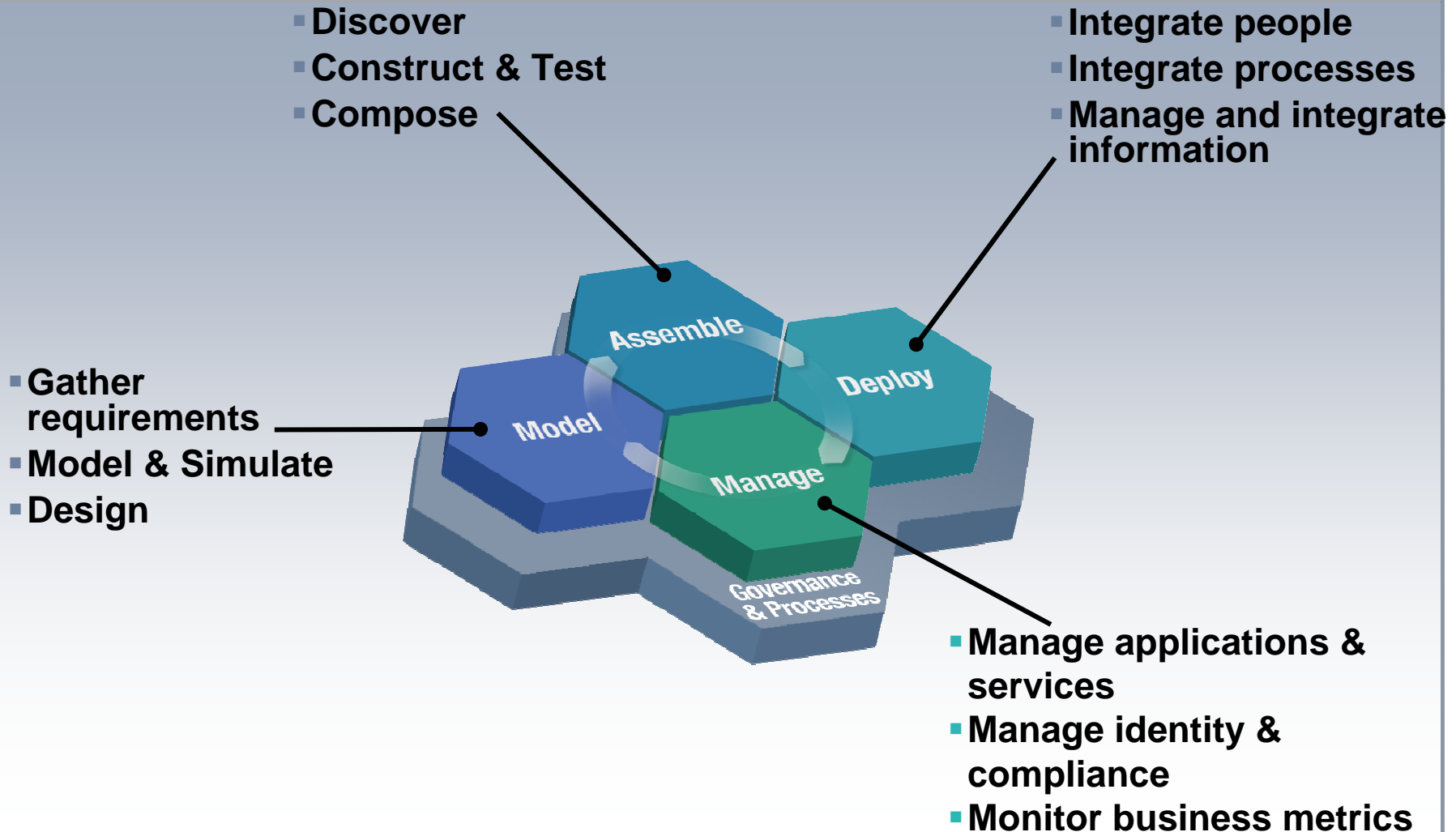


Business Process is implemented by integrating services

# What are the core elements that SOA brings together?



# The SOA Lifecycle



# The Value of the IBM SOA Foundation

*Provides What You Need to Get Started with SOA*

*IBM SOA Foundation: Integrated, open set of software, best practice, and patterns*

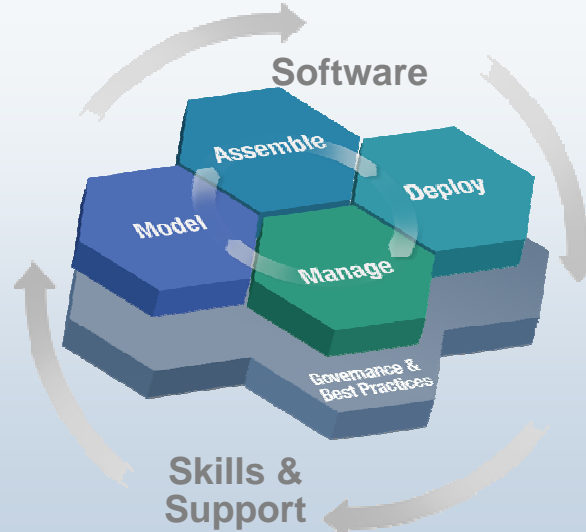
Supports complete lifecycle with a **modular** approach

**Extends value** of your existing investments, regardless of vendor

**Scalable**; start small and grow as fast as the business requires

Extensive business and IT standards support; facilitating greater **interoperability & portability**

## IBM SOA Foundation



## Leveraging existing IT Infrastructure



CICS



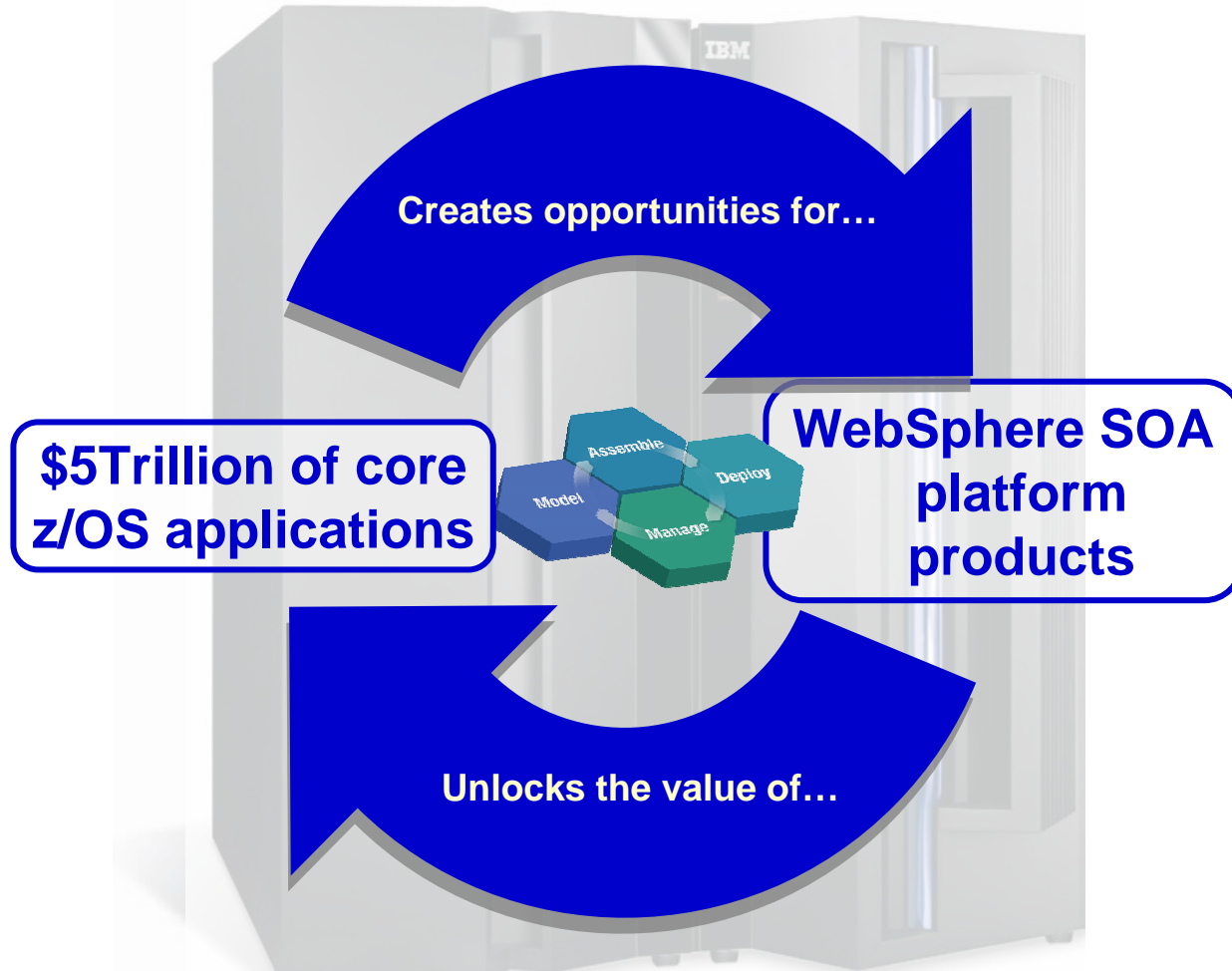
WebSphere

IMS



Custom Apps.

# SOA on IBM Mainframes – The Key to WebSphere SOA Success!



**System z9-109 and zSeries security, availability and recoverability**

# Why IBM for SOA?

## IBM understands service orientation and your business



### Expertise in aligning business and IT processes

- SOA consultants, architects and IT specialists
- Dozens of SOA-enabled business solutions
- Unique intellectual property and methods

### Thriving ecosystem of partners (ISVs, SIs, Resellers)

- 100+ partners in SOA community

### Extensive Industry experience and best practices

- Over 1000 customers worldwide

### Unmatched breadth and depth of products

- Over \$1B/yr invested in SOA
- Leadership in open standards: active in 50+ committees
- Over 300 SOA-related patents

THANK YOU

@server

IBM