

# Creating and Deploying SOA composite applications



Model



Model a new business process that builds on your current capabilities .....

**WebSphere Business Modeler**



...and discover program units and business rules you can reuse in the new process.

**WebSphere Studio Asset Analyzer**  
**Asset Transformation Workbench**  
**CICS Interdependency Analyzer**

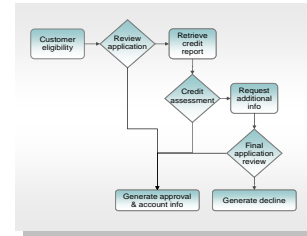


Assemble



Wrap programs as services, creating composite appl'ns from core assets....

**WebSphere Developer for zSeries \***



... and assemble the services across multiple platforms

**WebSphere Integration Developer \***



Deploy



Choreograph and deploy your new composite applications ....

**WebSphere Process Server \***

**WebSphere Portal Server**  
**WebSphere Application Server**  
**WebSphere XD \***



... using an ESB to power your SOA

**WebSphere Message Broker (Advanced ESB)**  
**WebSphere ESB \***  
**WebSphere DataStage TX**  
**WebSphere MQ**



Manage



Monitor the processes across your SOA, and intervene if necessary ....

**WebSphere Business Monitor**  
**ITCAM**



.... and export data for analysis and process improvement, back to .....

**WebSphere Business Modeler**





IBM Software Group

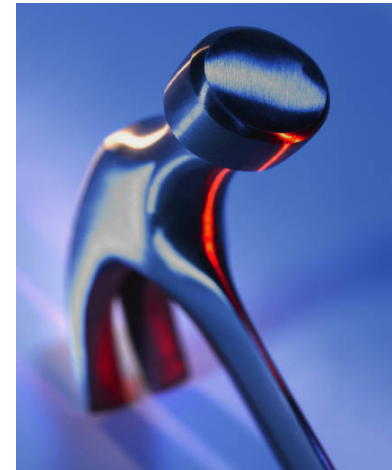
# IBM System z Integration Architecture Workshop: Business Flexibility Through IT Integration



@business on demand software

## What is a zSeries Infrastructure Architecture Workshop?

- Consultative, solutions based workshop
- Business problem focused
- Uses established methodologies, concepts, and patterns based on proven results
- Combination of white boarding, presentations, subject matter expertise
- Interactive, collaborative “JAD” session
- Focuses on leveraging mainframe assets and maximizing value of zSeries as a platform
- Promotes dialogue and brainstorming



***System z Focus: Leveraging existing assets and platform capabilities...where it makes sense***



## The objectives of a zIAW is to:

- Identify existing business challenges
- Leverage existing assets and investments
- Focuses on a current business challenge
- Identify and document the current (AS-IS) environment
- Identify short and long term business requirements
- Discuss industry standards and emerging technologies
- Identify mainframe infrastructure and/or integration challenges
- Develop a proposed future state (TO-BE) architecture
- Recommend enhancements to the existing architecture

***The main objective is to understand YOUR business issues and help you leverage your current application investment to allow business flexibility***



# Next Step: Are You Integration Ready?

- Let us provide a free on-site System z Infrastructure Architecture Workshop
- We will work with you to evaluate your current business integration architecture
- The workshop will focus on how IT can help solve your business problems
- IBM will deliver a documented, high-level solution architecture and a recommended implementation roadmap
- ***Let's get started solving your business integration challenges!***



# Thank you for attending!

