



WebSphere® software

Macromedia ColdFusion MX for IBM WebSphere Application Server

Highlights

- **Delivers maximum performance and decreases operational cost of running Internet applications**
- **Provides an intuitive scripting function to allow Web developers without Java programming skills to quickly build rich Internet applications**
- **Leverages existing infrastructure and assets in Macromedia ColdFusion technology**
- **Delivers IBM service and support through the IBM Passport Advantage program**
- **Creates a scalable, open standards-based software platform as a flexible foundation for growth and integration initiatives**
- **Extends your projects with easy integration to multiple WebSphere software platform offerings**
- **Enables vertical and horizontal scaling for ColdFusion applications**

Building specialized business applications for the Web — databases, commerce functions or technical support tools — are just first steps toward achieving marketplace prominence. To conduct business quickly and efficiently with customers and trading partners and to gain a real competitive edge, your Web applications should leverage the strengths of a high-performance, standards-based platform.

Many Web developers use simple scripting languages like Macromedia ColdFusion Markup Language (CFML) to create dynamic Web applications. With Macromedia ColdFusion MX for IBM WebSphere® Application Server, Web developers get the added advantage of an intuitive scripting environment to help build rich server-side applications that can run on the powerful WebSphere software platform.

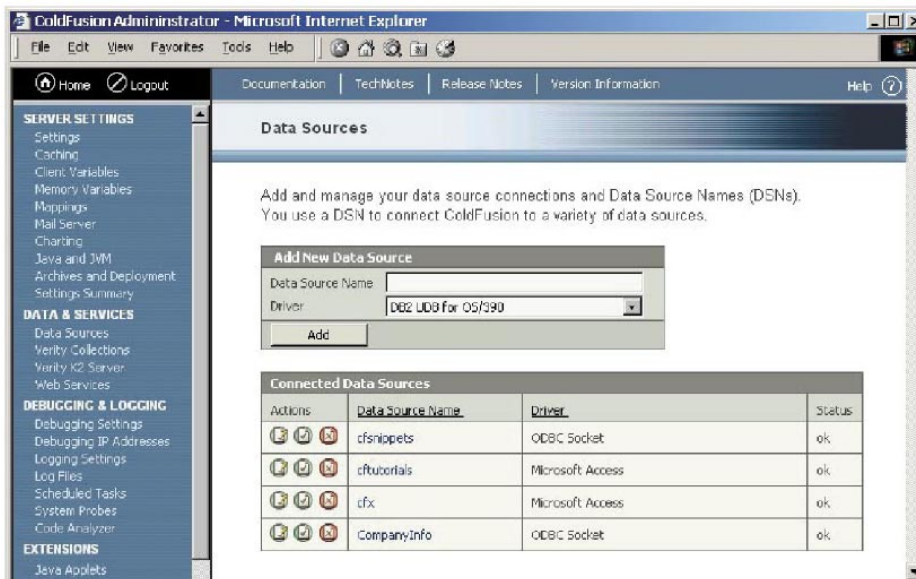


Figure 1. Macromedia ColdFusion MX for IBM WebSphere Application Server uses simple Web-based administration.



**WebSphere Application Server—
a solid base for growth**

WebSphere Application Server is the foundation of the market-leading Internet infrastructure from IBM. It provides scalability, speed and high performance for your e-business and enables a high volume of transactions in a secure environment. WebSphere development tools help shorten costly development cycles, reuse existing systems and capitalize on developers' skills. Based on industry standards like Java™ and Java 2 Platform, Enterprise Edition (J2EE) technologies, WebSphere Application Server gives e-businesses of all sizes the interoperability and flexibility required for future growth.

Macromedia ColdFusion MX for IBM WebSphere Application Server links ColdFusion applications with WebSphere Application Server resources. ColdFusion applications deployed to Macromedia ColdFusion MX for IBM WebSphere Application Server can run as standard J2EE applications—as CFML is compiled, it automatically converts to Java code that runs on WebSphere Application Server.

Designed and optimized for maximum performance and scalability, ColdFusion MX leverages the power of the underlying WebSphere Application Server capabilities—such as database connection pooling, process cloning and clustering—providing a significant gain in performance for production applications. ColdFusion MX also provides its own performance-enhancing features, including query and page caching, support for in-memory queries and built-in facilities for profiling code and identifying bottlenecks. ColdFusion MX delivers rapid, enhanced application performance on virtually every platform, including Red Hat Linux, Microsoft® Windows® and Sun Solaris operating environments—and with this latest version, IBM AIX® systems.

Resource management features like an advanced Java runtime environment, high-performance connectivity to databases and optimized thread management help improve performance for your Web-based business applications. Vertical and horizontal scaling let you run multiple instances of your applications on one or more machines using WebSphere Application Server advanced load balancing to enhance performance and boost Web site response times and availability. The advanced administrative capabilities of WebSphere software allow you to deploy applications to a cluster of servers rather than each individual server to lower administrative costs. Build open standards-based enterprise applications that are ready for Web deployment. And leverage the reliability and enterprise integration capabilities of WebSphere software.

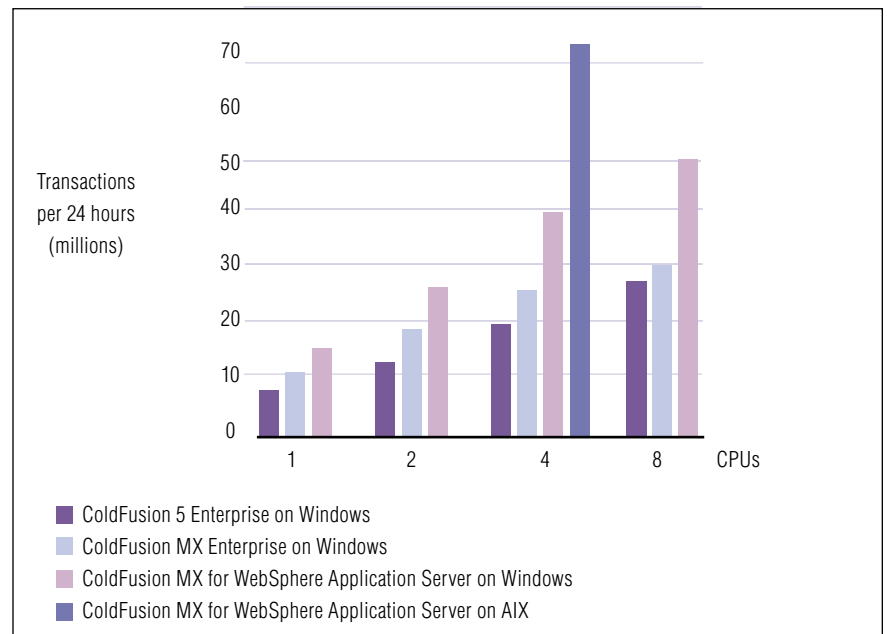


Figure 2. A four-processor server running on the AIX operating system delivers maximum performance in a high-transaction environment.

Gain flexibility with emerging standards

Combining WebSphere software with ColdFusion technology gives you the power of J2EE and Microsoft.NET platforms, along with an easy-to-use scripting language. So you can leverage the benefits of emerging IT infrastructure standards without the associated complexity. Developers can create new and enhanced applications as you migrate to open standards-based technology. And your enterprise gains more flexibility in deploying ColdFusion applications and integrating them with the rest of your enterprise infrastructure.

Macromedia ColdFusion MX for IBM WebSphere Application Server provides:

- *Web services support*
- *Strong integration capabilities for databases*
- *Open standards-based Web services engine*
- *Internet protocols and components*
- *Easy-to-use, Web-based administrative console to configure servers quickly, schedule tasks, monitor performance and analyze server logs*
- *Powerful application deployment services to help you easily archive or deploy entire applications*

Macromedia ColdFusion MX for IBM WebSphere Application Server also includes several new functions to enhance your site:

- *Enables you to create charts and graphs to illustrate business information on the Web*
- *Facilitates complete indexing and full-text searching of your Web site with Verity search engine*
- *Lets you capture data dynamically and then run portions of applications remotely using Macromedia Flash MX to enhance the overall user experience*

Macromedia uses integration capability to create a WebSphere Studio plug-in for Dreamweaver MX, the latest Dreamweaver development tool that uses ColdFusion to create applications. IBM WebSphere Studio, an integrated application development environment, maximizes return on investment (ROI) and lowers labor costs through superior developer productivity and the flexibility of a portal-like integration of best-of-breed tools.

The WebSphere Studio plug-in brings together the best of both worlds for developers, who can use WebSphere Studio to create rich Java and WebSphere applications, and then launch Dreamweaver MX from the WebSphere Studio environment to create ColdFusion applications. Developing from a single WebSphere Studio development environment helps developers create, test and deploy applications faster.

Prepare for the future—leverage existing assets

Use best-of-breed applications in the marketplace with Macromedia ColdFusion MX for IBM WebSphere Application Server. Your developers get an opportunity to migrate to open standards while preserving their ColdFusion skills and applications. Your enterprise benefits by leveraging previous investments in existing skills and tools. You can build a solid foundation for growth using Java technology-based Web services to help prepare you for future e-business opportunities. And you can use simple ColdFusion scripting to develop rich Internet front-end applications while leveraging Java technology for your back-end business logic.

Macromedia ColdFusion MX for IBM WebSphere Application Server is licensed under IBM Passport Advantage® agreements. One or more customer locations or sites anywhere in the world can enroll under the same Passport Advantage agreement —allowing organizations to leverage their combined acquisition power. The Software Maintenance program is included with your license and provides one year of support. Software Maintenance coverage helps ensure customers have the most current versions of IBM distributed software and the easiest migration path to new platforms. It also provides technical support to help technical staff quickly and easily resolve routine installation, usage and code-related questions, and get the help they need from experienced, knowledgeable software support specialists.

Macromedia ColdFusion MX for IBM WebSphere Application Server at a glance

Microsoft Windows

- Intel® Pentium® III processor 500MHz or faster
- Microsoft Windows NT® Server (with Fix Pack SP6a or later), Microsoft Windows 2000 Server (with Fix Pack SP2 or later) or Microsoft Windows 2000 Advanced Server (with Fix Pack SP3 or later)
- 384MB RAM (512MB recommended)
- 175MB hard disk space

Linux

- Intel Pentium III processor 500MHz or faster
- For IBM WebSphere Application Server, Version 4.0: Red Hat Linux (x86) 6.2 - 7.3, SuSE Linux (x86) 7.1 and 7.2; for WebSphere Application Server, Version 5.0: Red Hat Advanced Server 2.1 or SuSE Linux 7.3
- 384MB RAM (512MB recommended)
- 175MB hard disk space

UNIX®

- SPARC 440MHz or faster
- Sun Solaris operating system 7 or 8
- IBM POWER3™ for AIX
- IBM AIX 5L, Version 5.1
- 384MB RAM (512MB recommended)
- 175MB hard disk space

WebSphere Application Server

- IBM WebSphere Application Server Advanced Edition Single Server, Version 4.0.3
 - IBM WebSphere Application Server Advanced Edition, Version 4.0.3
 - IBM WebSphere Application Server, Version 5.0
 - IBM WebSphere Application Server for Developers, Version 5.0
 - IBM WebSphere Application Server for Network Deployment, Version 5.0
-

For more information

To learn more about how Macromedia ColdFusion MX for IBM WebSphere Application Server can help your business leverage its investment in Macromedia technology, visit:
ibm.com/software/webservers/coldfusionmx

To learn more about purchasing this product from IBM, visit:
ibm.com/software/passportadvantage



© Copyright IBM Corporation 2003

IBM Corporation
Software Group
Route 100
Somers, NY 10589
U.S.A.

Produced in the United States of America
05-03
All Rights Reserved

AIX, the e-business logo, IBM, the IBM logo, Passport Advantage, POWER3 and WebSphere are trademarks of International Business Machines Corporation in the United States, other countries or both.

Intel and Pentium are trademarks of Intel Corporation in the United States, other countries or both.

Microsoft, Windows and Windows NT are trademarks of Microsoft Corporation in the United States, other countries or both.

Java and all Java-based trademarks and logos are trademarks of Sun Microsystems, Inc. in the United States, other countries or both.

UNIX is a registered trademark of The Open Group in the United States and other countries.

Other company, product and service names may be trademarks or service marks of others.