

WebSphere software



Offering Overview

WebSphere Portal 4.1

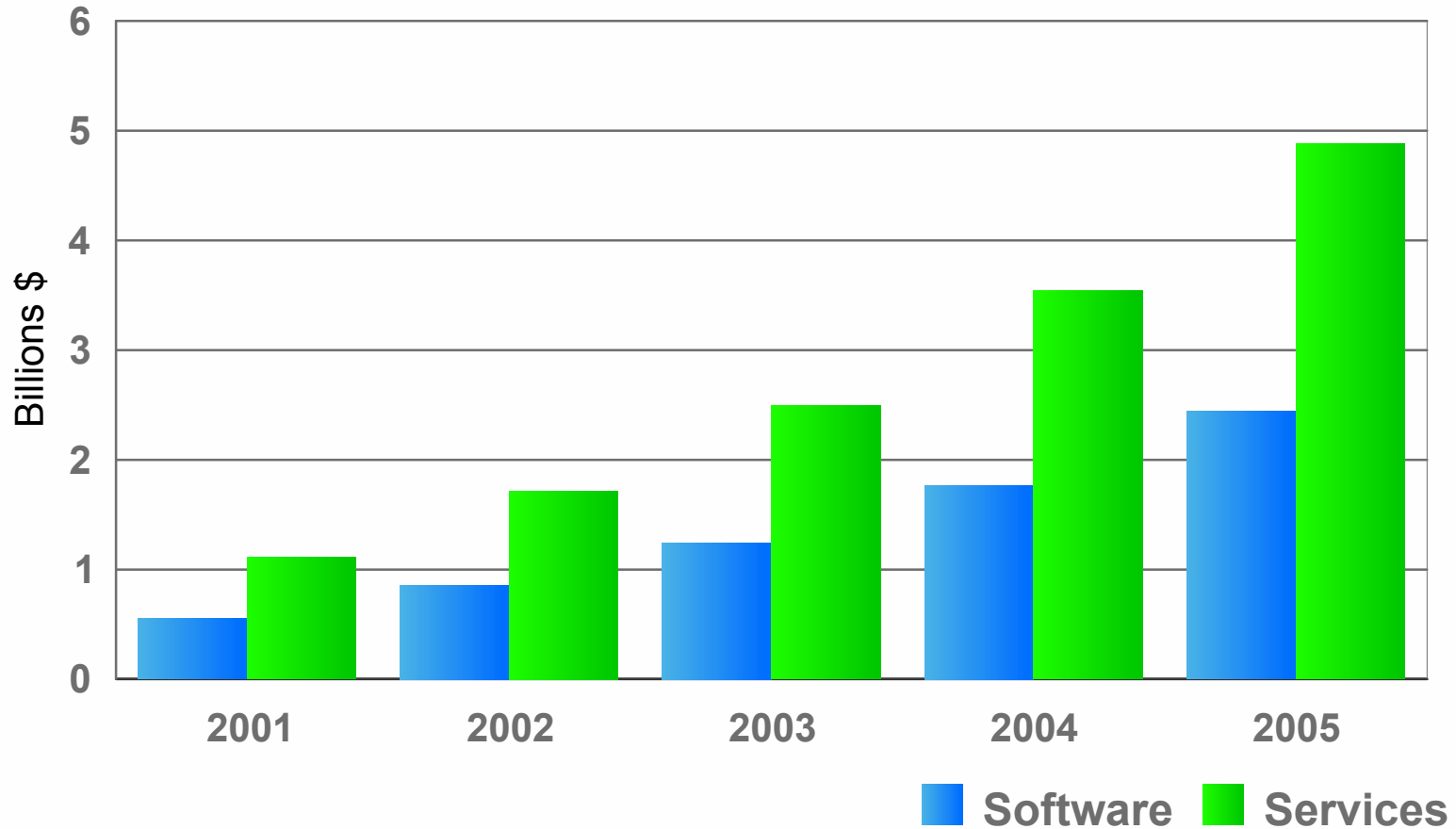
IBM Software Group

Agenda

- Enterprise Portal Market
- WebSphere Portal Strategy
- Using Portlets to Add Value
- Deloitte and Touche: CFO Portal Solution
- Results
- The Future of WebSphere Portal

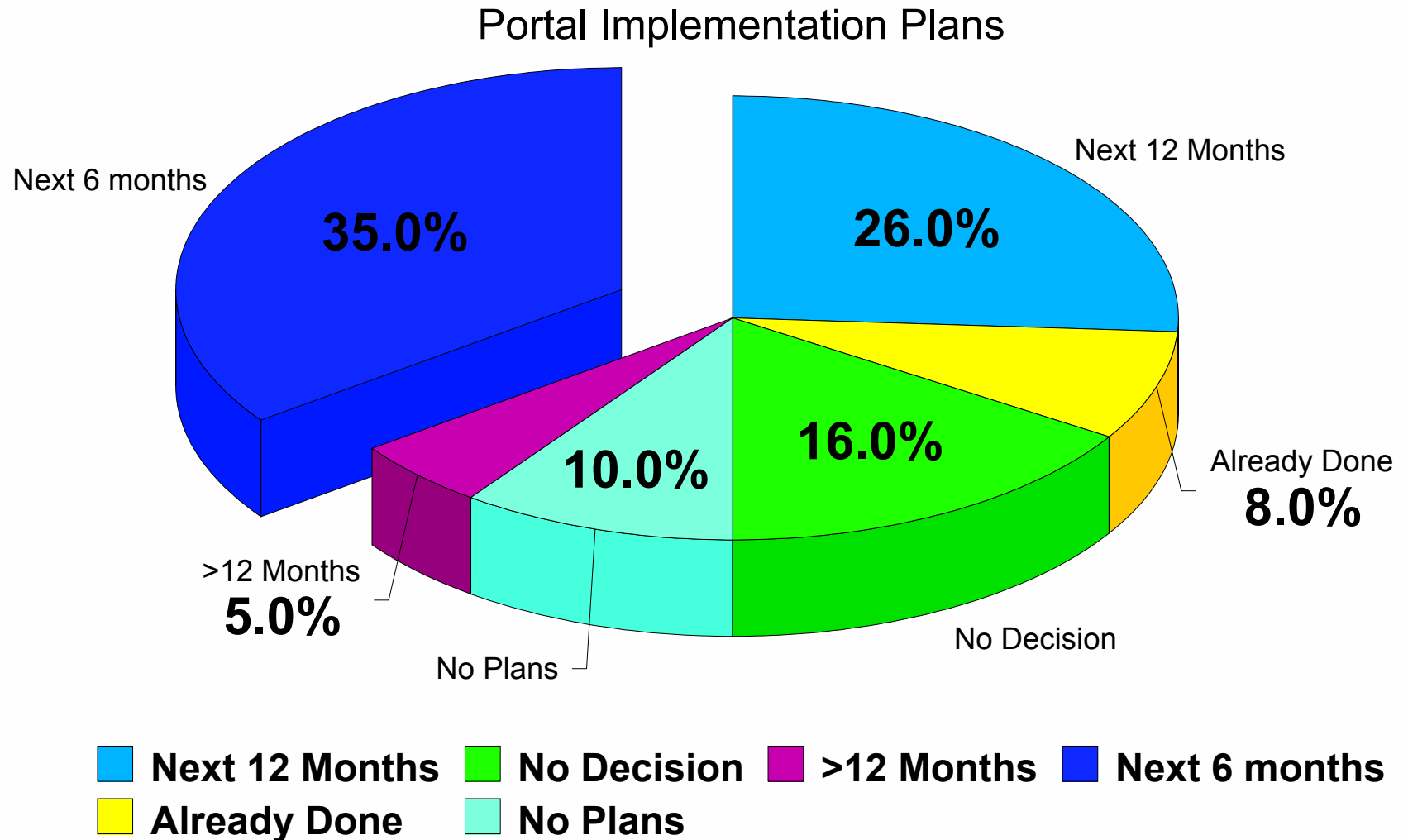
Portal Market is Hot!

Projected Portal Software Opportunity

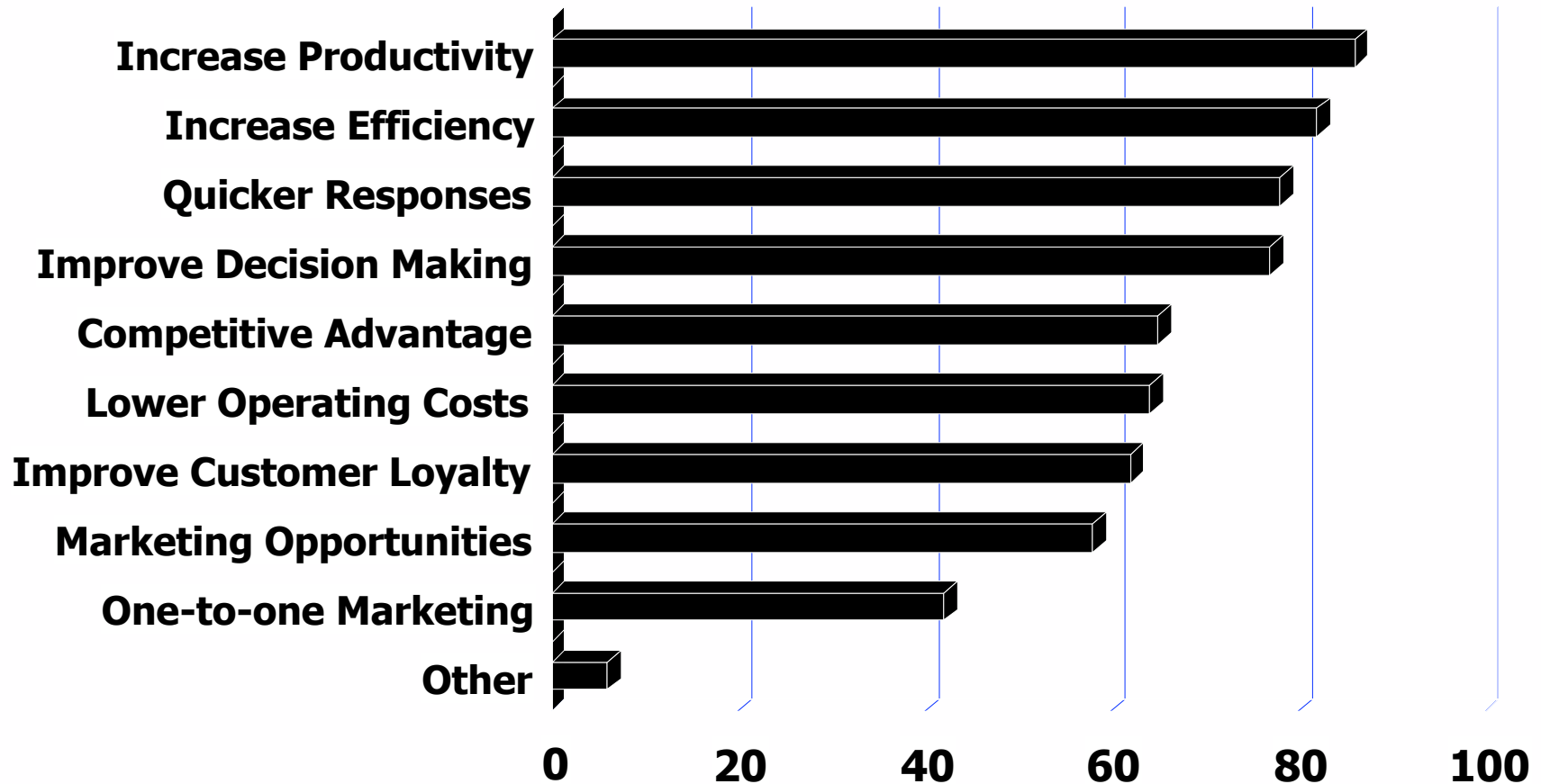


Sources: IDC Worldwide Enterprise Information Portal Software Market Forecast and Analysis, July 2001
IBM SWG Services, 2002

Portal Market Opportunity - Butler Group

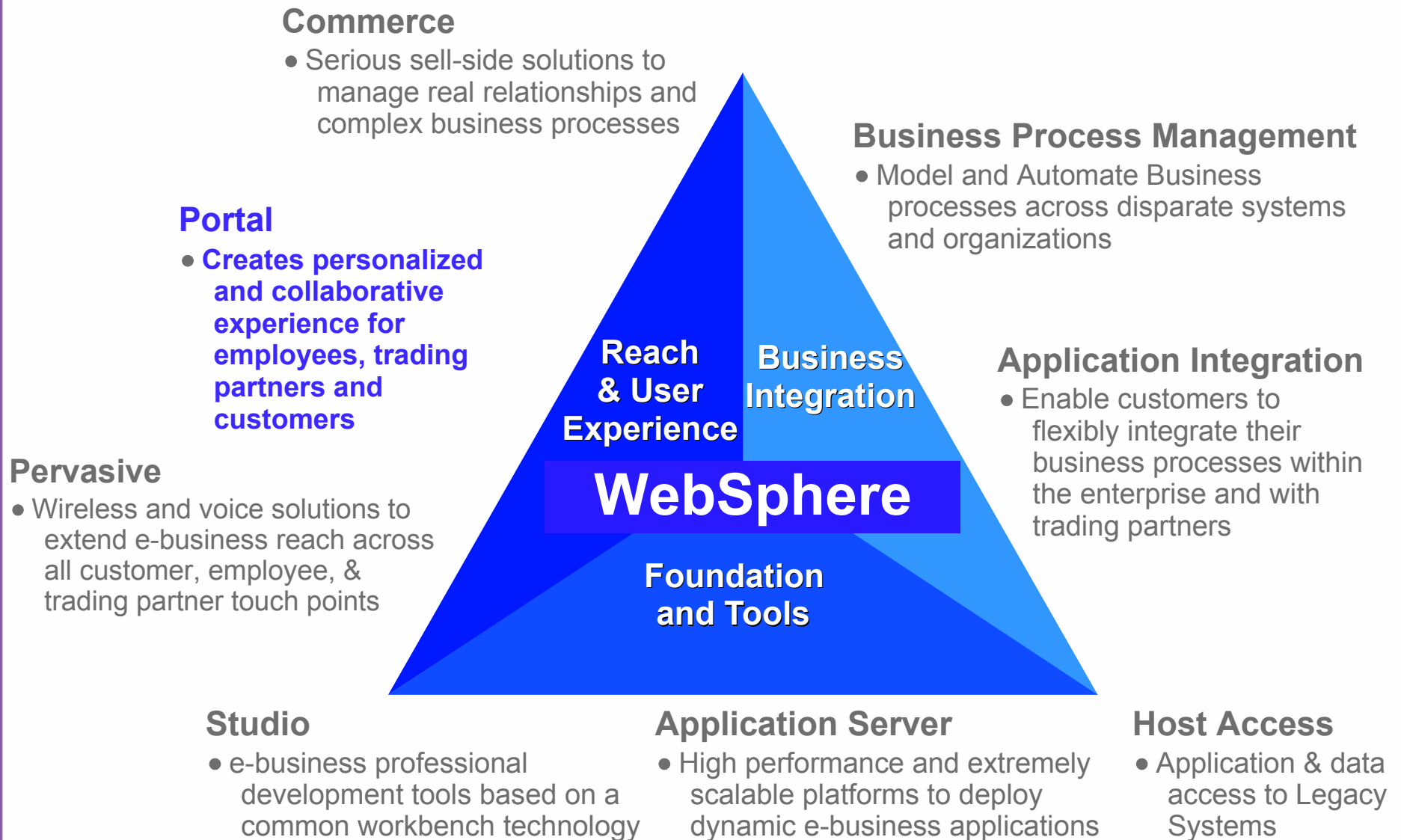


Business Reasons for Enterprise Portals

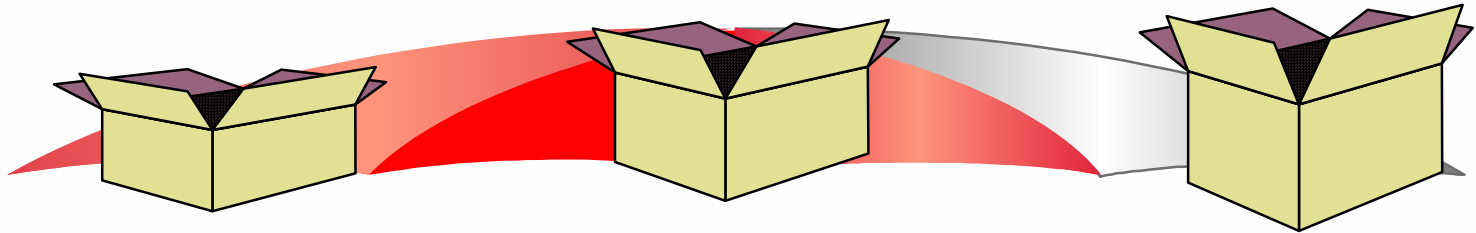


Source: InformationWeek Research, July, 2001

WebSphere Delivers Dynamic e-business



IBM WebSphere Portal Directions: V4.1



**WebSphere Portal
Enable**

**WebSphere Portal
Extend**

**WebSphere Portal
Experience**

- Web Application Server
- Portal
 - Presentation Services
 - Portal Framework Services **enhanced admin/customizer**
 - Portlets (many more)
- Personalization
 - Business Rules Engine
 - Recommendation Engine
 - **Event/Campaign mgt**
- **Web Services**
 - **Generate & Consume**
- **Portal plugin for Eclipse**
- **New Search engine**
- LDAP Directory
- Database
- **Content Publishing**
- **Credential Vault**

+

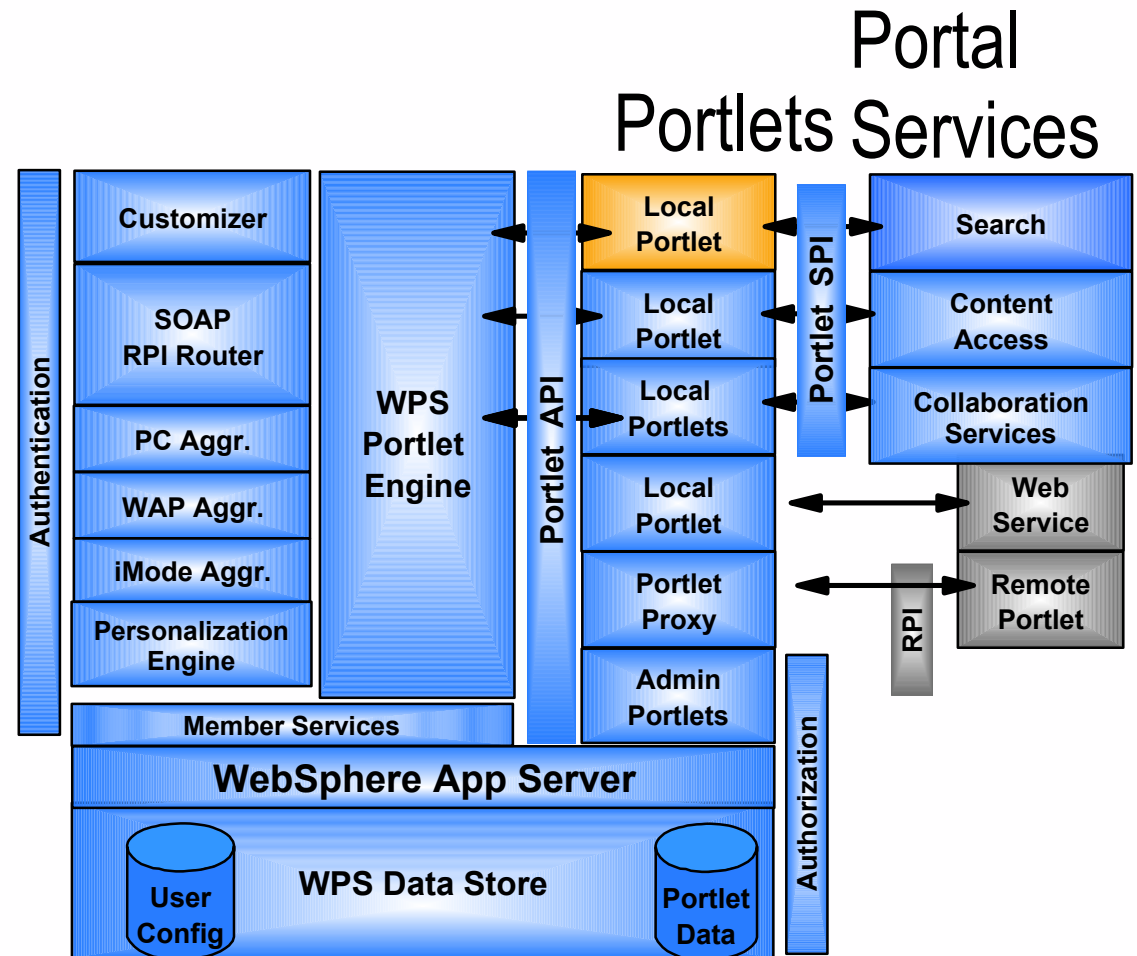
- **Collaboration services**
 - **Communities**
 - **Instant Messaging**
- **Realtime team collaboration**
 - discussion, documents, tasks
- Heterogeneous search broker across content sources
- Web usage analysis tools
- **Portal Metrics**

+

- e-meetings
- Application sharing
- White boarding
- Off-line team collaboration
- Security Management
 - **SSO enhancements**
- Management of Content collections:
 - Documents, Images
 - Audio, Video
 - **Content Publishing integration**
- Data transforms

Portlets are the key to leveraging the Portal

- Extensible Portal framework
 - ▶ Small, stable portlet API
 - ▶ Plug-in services via portlets
 - ▶ Plug in content via portlets
- Portlets are powerful
 - ▶ Support messaging between portlets
 - ▶ Create services for other portlets
 - ▶ Can automatically become web services!!
- Portlets are easy
 - ▶ Similar to writing a Java Servlet
 - ▶ Write, test and debug with WebSphere Studio



IBM Driving Portal Standards

IBM is co-Chair

Stefan Hepper@IBM, Alejandro Abdelnur @Sun

Java Portlet API

- Achieves Interoperability between local Portlets and Portals
- Standardization in JSR in the Java Community Process
- JSR will be co lead by IBM and Sun: <http://jcp.org/jsr/detail/168.jsp>
- IBM initiated the Portlet API, will be responsible for providing the Portlet API Java docs and Open Source Reference Implementation at Apache Jakarta
- Sun will edit Spec and provide the freely accessible Compliance Test Kit

Java Portlet API Supporters

- Accenture
- Apache Software Foundation (init EG member)
- BEA (init EG member)
- Boeing
- Borland
- Bowstreet
- Cap Gemini Ernst & Young
- Citrix
- DaimlerChrysler
- Documentum
- Enformia Ltd
- Epicentric
- Hewlett-Packard (will join EG)
- IBM (init. EG member)
- Interwoven
- Macromedia
- McDonal Bradley
- Plumtree
- SAP
- Silverstream
- Sybase
- Tarantella, Inc
- Vignette
- IONA (will join EG)
- Sun (init. EG member)
- Computer Associates
- Peoplesoft (will join EG)
- Oracle (will join EG)

IBM is Chairman

Thomas Schaeck

Web Services for Remote Portals (WSRP)

- Achieves Interoperability between Visual, User Facing Web Services and Portals
- Standardization in OASIS WSRP Workgroup
- IBM leads workgroup and plans to provide Open Source Reference Implementation
- https://www.oasis-open.org/news/oasis_news_01_28_02.shtml

Companies who intend to participate in WSRP TC

- Bowstreet
- Divine
- Documentum
- Epicentric
- Factiva
- Fujitsu
- HP
- IBM
- I2
- Interwoven
- IONA
- Lexis-Nexis
- Lotus
- Netegrity
- Oracle
- Peoplesoft
- Plumtree
- Silverstream
- Tibco
- Zolera Systems
- Sun ?
- Intel ?

Leveraging Portlets for B2C Retailing Solution

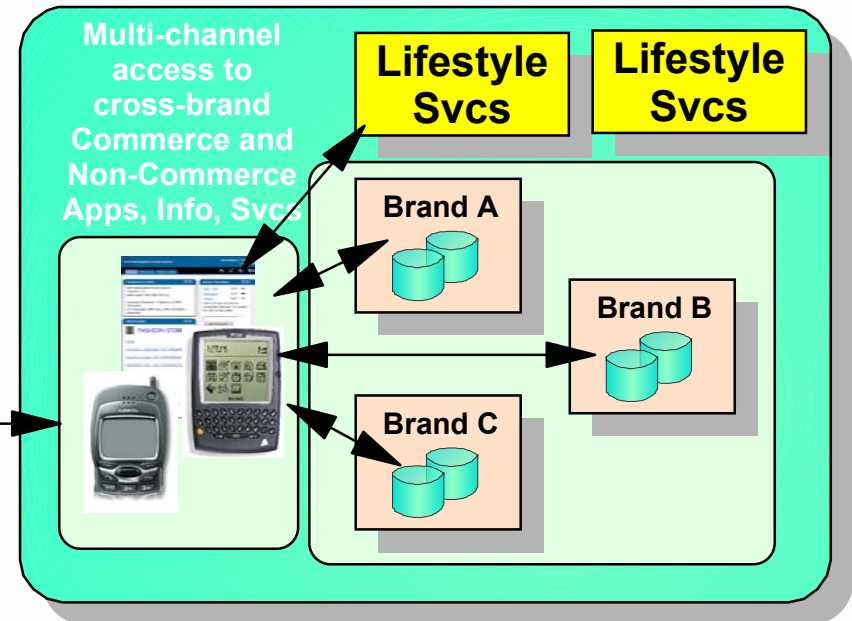
Customer Objectives:

- Increase wallet share
- Increase online sales
- Become a lifestyle destination

Customer Pains:

- Fragmented identity
- Low conversion rates
- No cross-sell/upsell across brands

Consumers



Solution: **WebSphere Commerce + WebSphere Portal Family**

- Portal provides unified UI across all brands
- Multi-channel access (Web, wireless)
- Targeted campaigns & promotions
- Portlets allow the access/integration with commerce transactions
- Concurrent access to commerce, info, service and lifestyle programs

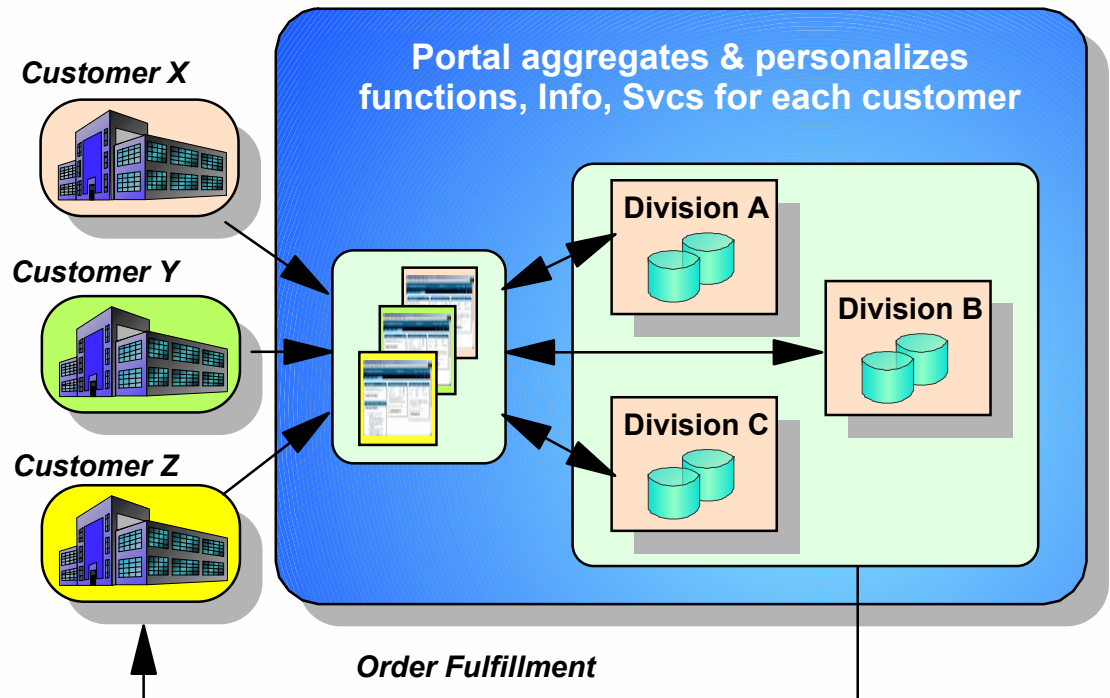
Leveraging Portlets for B2B Manufacturing Solution

Customer Objectives:

- Single point of access
- Common experience across multiple divisions

Customer Pains:

- Divisions have separate customer files/view
- Complex cross-division customer interaction
- Multiple web sites



Solution: **WebSphere Commerce + WebSphere Portal Family**

- "Portlets" to aggregate key commerce data - catalog, orders, etc.
- Personalized/contract based content
- Single signon to multiple applications - profile based security
- Role / Profile based access - single UI

WebSphere Portlet Providers

- Alta Vista
- [Amacis](#)
- Autonomy
- Atomica
- Baan
- [Boost Works](#)
- Business Objects
- Citrix
- Convera
- Correlate
- Crystal Enterprise
- Data Monitor
- Deloitte and Touche
- Divine
- Documentum
- [Ebase](#)
- en technologies
- Factiva
- FAST
- FatWire
- FinGoFirstRain
- Hoovers
- Infisys
- [Information Builders](#)
- Intranet
- Inktomi
- IntellectExchange
- Interwoven
- Kivera
- Lexis Nexis
- Media Apps
- [MyBubble](#)
- Netonomy
- [NetSize](#)
- NewsEdge
- Nikkei
- OnePage
- Open Market
- [Orsus Solutions](#)
- Pay Box
- Perficient
- Plum Design
- [Presence On Line](#)
- [Quiver](#)
- Rapidigm
- River Run
- SAP Portal
- ScreamingMedia
- Stellent
- [Swissrisk](#)
- Tamalpais
- The Brain
- [Tridion](#)
- Verity
- Webraska
- YellowBrix

WebSphere Portal System Integrators

- Acamaya
- accenture
- Altana Consulting
- Andersen
- Answerthink
- Beans Factory
- Cannon Sales
- CD Group
- Cotelligent
- Covansys
- CSK
- Digital Evolution
- Deloitte & Touche
- eBuilt
- Emakina
- en technologies
- eRunway
- eSource
- Experio
- EYT
- Fuji SoftABC
- Haverstick Consulting
- Hitachi Software Engineering
- inexware
- Infocom
- JIEC
- Just Systems
- Kobelco Systems
- Lido Aeronet
- Lightwell
- Logix
- MenaNet
- Meritage
- NetJuice Consulting
- nexum
- Nihon Jyouthou Tsuushin
- Perficient
- PWC
- Razorfish
- Ricoh Techno Systems
- Secom Information System
- Secom Trust Net
- Shared Vision
- Symatrix
- T&I Solutions
- Uchida-Spectrum
- Unity
- Xcelerate

Solution that transforms the role of Finance

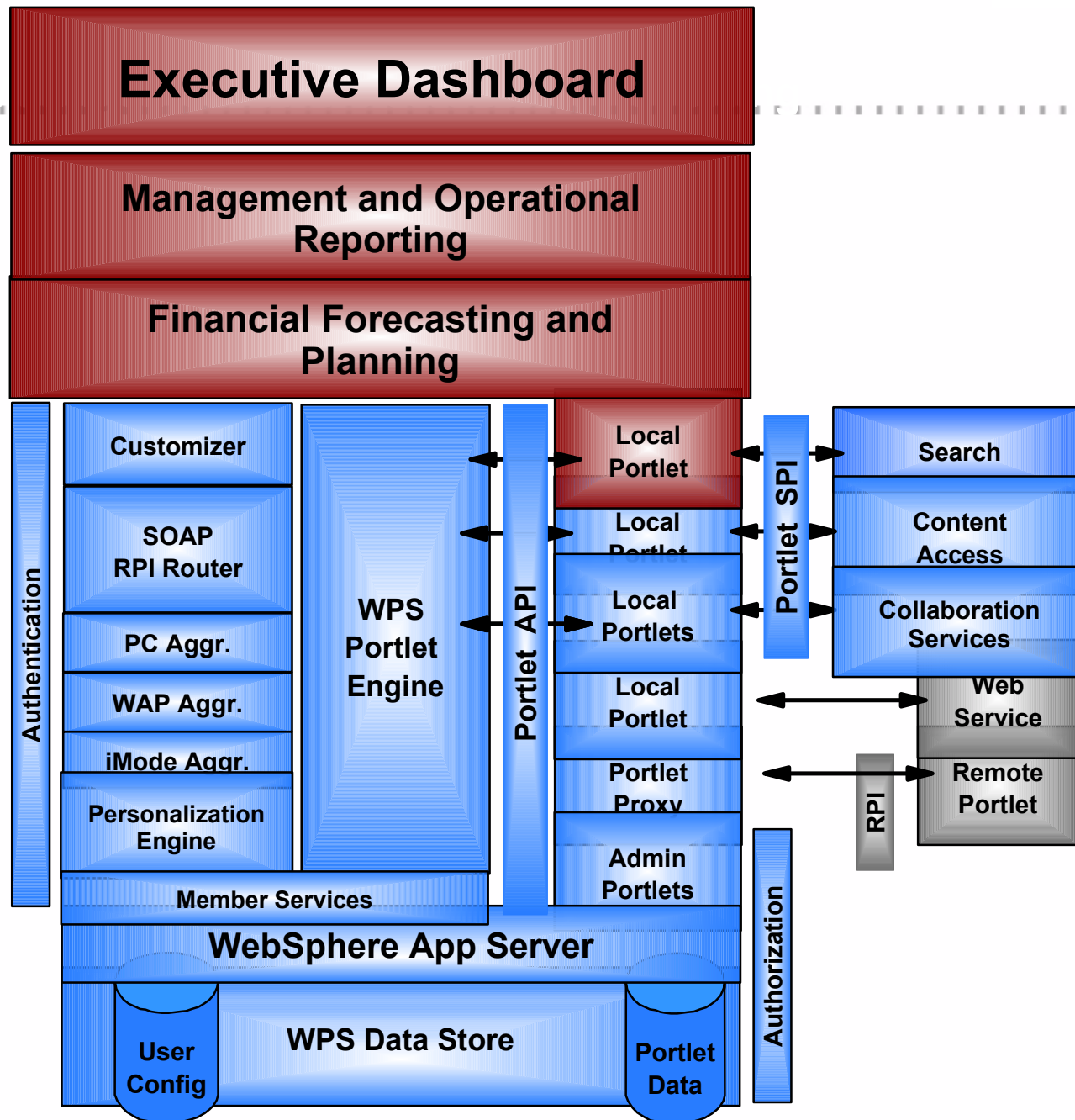
- Portal technologies create an unprecedented opportunity to integrate information from multiple sources
- Custom, personalized delivery of information greatly improves usability of data
- Single, integrated data sources greatly increase information integrity and control
- Web browsers make information easier to access

Opportunity for Deloitte and Touche

Deloitte & Touche has developed the CFO Portal as a framework to help our clients succeed

- Clear framework that helps executives focus on key metrics and variables
- Analytic platform that integrates information from multiple and complex sources
- Capitalizes on investment in existing information infrastructure
- One version of the truth...improved information quality and control

CFO Portal Framework



Alerts

- Financial Alerts
- Workflow Alerts
- Email Alerts

Company Headlines

- DCI announces additional DSL Service
- Guideposts announces strategic alliance with DCI
- DCI in negotiations to enter Mexican data transmission market
- DCI announces department store joint marketing campaign

Custom Portfolio

Symbol	Last	Chg(\$)	Chg(%)
DOW	9,606.19	+ 18.67	+ 0.19 %
AOL	\$36.76	- 0.61	- 1.62 %
CSCO	\$19.18	+ 0.09	+ 0.09 %
INTL	\$17.72	- 0.03	- 0.17 %
MSFT	\$65.30	+ 0.88	+ 1.37 %

Competitive Information

- Sept. 11 No Albatross for Media Business, Viacom's Karmazin Insists
- [audio] Web use nears plateau after 7 years [1.0 min]
- ScripTalk(TM) Talking Prescriptions Among Popular Science '2001 Best of What's New'
- What is AOL Time plotting?
- Disney Net Falls, Sees Slump Ahead

My Documents more ▶

Scripts
Financial Statements
CFO Status
Board of Directors Summary
Portal II Requirements Document

Executive Snapshot more ▶

Overall	78%
Financial	55%
Customer	75%
Internal	85%

MOR Snapshot more ▶

ROE	20.86%
ROI	.53%
Asset Turnover	1.47
Customer Turnover	1
EPS	\$1

FFP Snapshot more ▶

Salaries	\$239,897,732
Software Development	\$127,687,576
Advertising Costs	\$73,822,057
Net Income	\$91,292,086

Alerts

- Financial Alerts
 - Revenues
 - Expenses
 - EBITDA
- Workflow Alerts
- Email Alerts

Custom Portfolio

Symbol	Last	Chg(\$)	Chg(%)
DOW	9,606.19	+18.67	+0.19%
AOL	\$36.76	-0.61	-1.62%
CSCO	\$19.18	+0.09	+0.09%
INTL	\$17.72	-0.03	-0.17%
MSFT	\$65.30	+0.88	+1.37%

Company Headlines

- DCI announces additional DSL Service
- Guideposts announces strategic alliance with DCI
- DCI in negotiations to enter Mexican data transmission market
- DCI announces department store joint marketing campaign

Competitive Information

- Sept. 11 No Albatross for Media Business, Viacom's Karmazin Insists
- [audio] Web use nears plateau after 7 years [1.0 min]
- ScripTalk(TM) Talking Prescriptions Among Popular Science '2001 Best of What's New'
- What is AOL Time plotting?
- Disney Net Falls, Sees Slump Ahead

My Documents [more](#)

Scripts
Financial Statements
CFO Status
Board of Directors Summary
Portal II Requirements Document

Executive Snapshot [more](#)

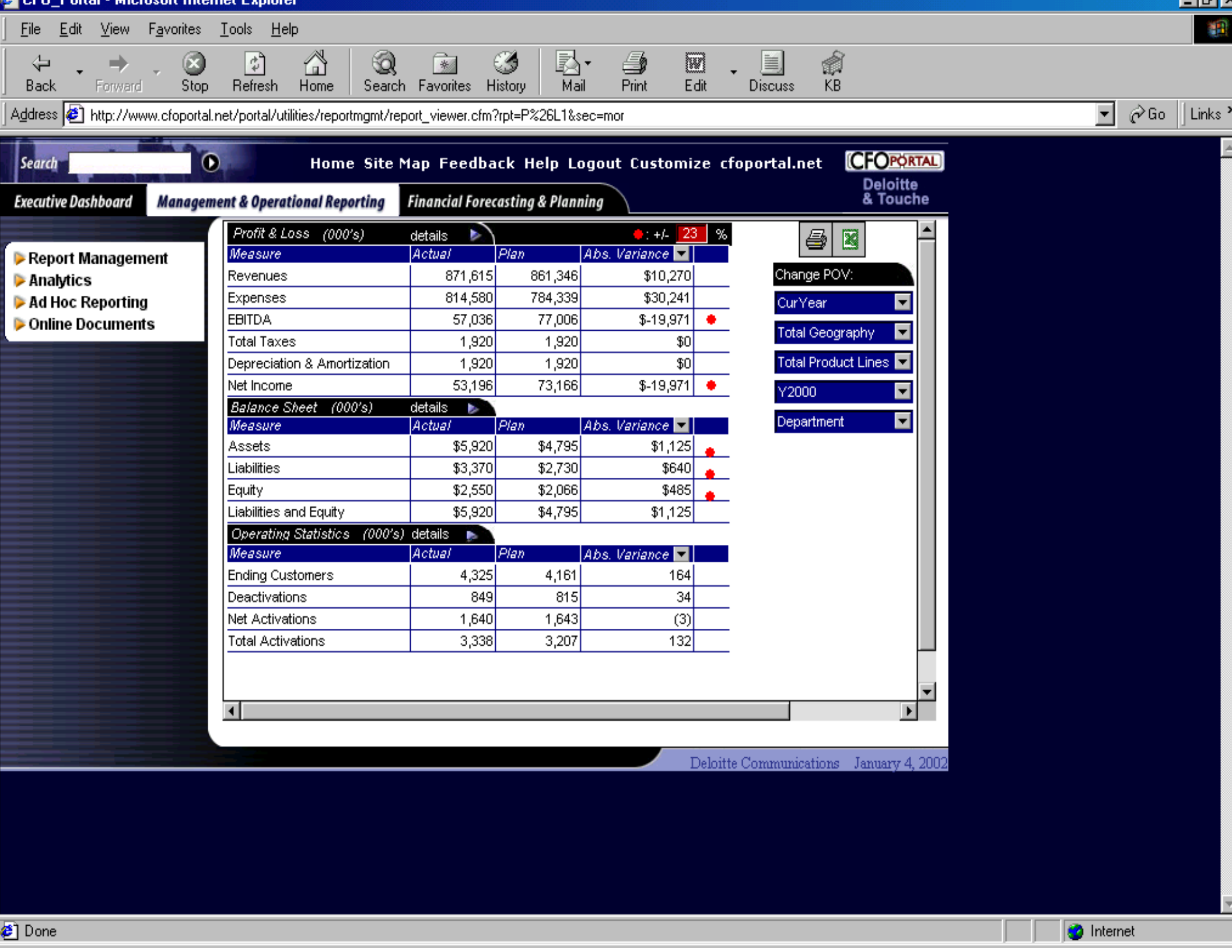
Overall	78%
Financial	55%
Customer	75%
Internal	85%

MOR Snapshot [more](#)

ROE	20.86%
ROI	.53%
Asset Turnover	1.47
Customer Turnover	1
EPS	\$1

FFP Snapshot [more](#)

Salaries	\$239,897,732
Software Development	\$127,687,576
Advertising Costs	\$73,822,057
Net Income	\$91,292,086



Search



Deloitte & Touche

- ▶ Report Management
- ▶ Analytics
- ▶ Ad Hoc Reporting
- ▶ Online Documents

Profit & Loss (000's) details +/- 23 %

Measure	Actual	Plan	Abs. Variance
Revenues	871,615	861,346	\$10,270
Expenses	814,580	784,339	\$30,241
EBITDA	57,036	77,006	-\$19,971
Total Taxes	1,920	1,920	\$0
Depreciation & Amortization	1,920	1,920	\$0
Net Income	53,196	73,166	-\$19,971

Balance Sheet (000's) details

Measure	Actual	Plan	Abs. Variance
Assets	\$5,920	\$4,795	\$1,125
Liabilities	\$3,370	\$2,730	\$640
Equity	\$2,550	\$2,066	\$485
Liabilities and Equity	\$5,920	\$4,795	\$1,125

Operating Statistics (000's) details

Measure	Actual	Plan	Abs. Variance
Ending Customers	4,325	4,161	164
Deactivations	849	815	34
Net Activations	1,640	1,643	(3)
Total Activations	3,338	3,207	132

Change POV:

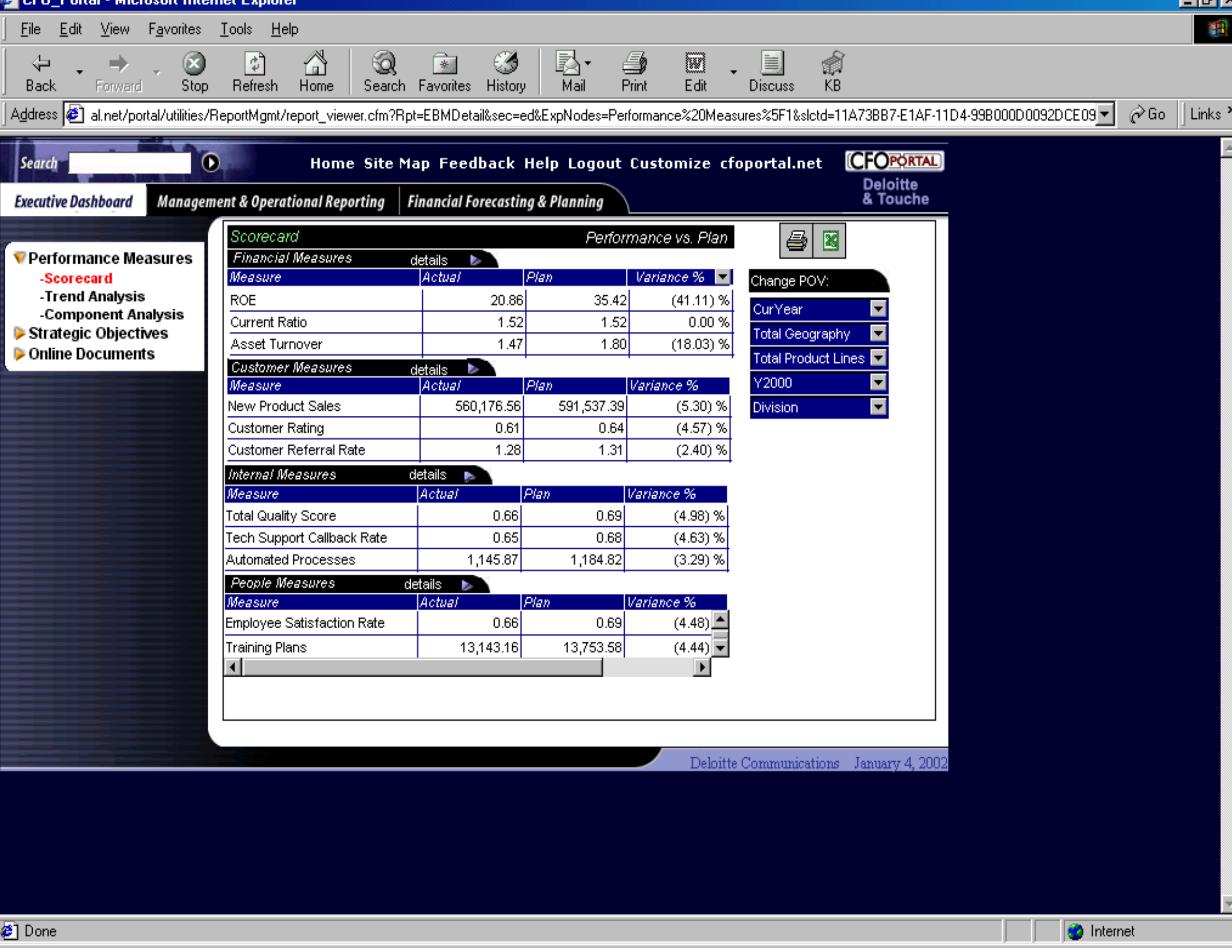
CurYear

Total Geography

Total Product Lines

Y2000

Department



- Performance Measures
 - Scorecard
 - Trend Analysis
 - Component Analysis
- Strategic Objectives
- Online Documents

Scorecard Performance vs. Plan

Financial Measures details

Measure	Actual	Plan	Variance %
ROE	20.86	35.42	(41.11) %
Current Ratio	1.52	1.52	0.00 %
Asset Turnover	1.47	1.80	(18.03) %

Customer Measures details

Measure	Actual	Plan	Variance %
New Product Sales	560,176.56	591,537.39	(5.30) %
Customer Rating	0.61	0.64	(4.57) %
Customer Referral Rate	1.28	1.31	(2.40) %

Internal Measures details

Measure	Actual	Plan	Variance %
Total Quality Score	0.66	0.69	(4.98) %
Tech Support Callback Rate	0.65	0.68	(4.63) %
Automated Processes	1,145.87	1,184.82	(3.29) %

People Measures details

Measure	Actual	Plan	Variance %
Employee Satisfaction Rate	0.66	0.69	(4.48) %
Training Plans	13,143.16	13,753.58	(4.44) %



Change POV:

- CurYear
- Total Geography
- Total Product Lines
- Y2000
- Division

WebSphere Portal Teleco Implementation

Orange life services

Les Orange Life Services sont des services de contenus organisés autour des préférences d'un client en mobilité.



2002 Portal Milestones

25,000+ companies using WebSphere Portal

Combination of:

- ▶ OEM to Partners
- ▶ Large Companies
- ▶ Portal Hosting Services - IBM and Partners

20+ million named users

Combination of:

- ▶ Company Employees
- ▶ Partners
- ▶ Named Customers

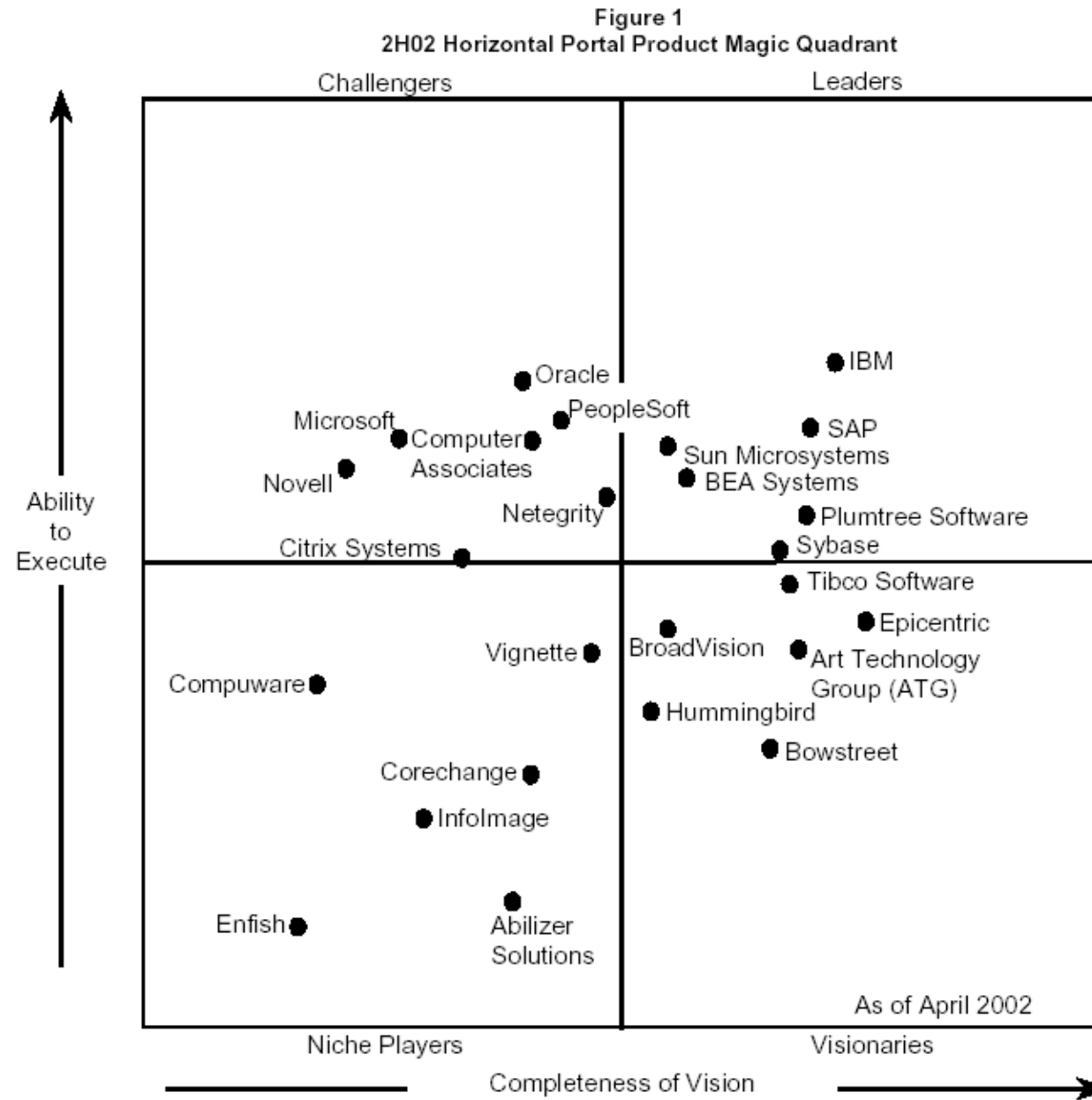
IBM Telco customer
adding 20,000 users
per week to their portal

500,000,000M+ visitors

Combination of:

- ▶ Company Employees
- ▶ Partners
- ▶ Named Customers

The Market Leader



WebSphere

Source: Gartner Research



SMB Portal

- Portal tailored to the needs of companies with fewer than 5,000 employees
- Distinguishing characteristics of SMB companies
 - ▶ **Lack of e-Business skills and staff**
 - In competition with larger companies and IT vendors for scarce & expensive resources
 - IT salaries are not as readily affordable by SMB companies
 - ▶ **Significant reliance on solution providers**
 - Solution providers influence the purchase of middleware projects 66% of the time **
 - ▶ **Smaller IT budget -- solution price range maximum = \$250K = H/W + S/W + Services**
- Key elements of a SMB solution
 - ▶ Simplified installation, administration and use
 - ▶ Enablement of SMB solution providers and support by key applications
 - ▶ Alternative pricing (e.g. license limitation on the number of concurrent portal users)

** Source: AIM SMB Target Market Analysis Research, November 2001

WebSphere Portal Industry Editions

Targets

Financial Sector

Industrial

Distribution Sector

Government Sector

Communications Sector

Top ISV's to get portlets

Kana
S1
Siebel
Peopelsoft Fin
Retek

Prebuilt Industry Syndicated Content package with viewer

Prebuit taxonomy example and templates

Possible prebuilt WBI components

Cityva
Dessault
Caddence

Syndicated Content

Taxonomy example

Possible prebuilt WBI components

SAP
PeopleSoft
Ariba
I2
Retek
Kana

Syndicated Content

Taxonomy example

Possible prebuilt WBI components

EZGov
Siebel
SAP
Peoplesoft
Ariba

Syndicated Content

Taxonomy example

Possible prebuilt WBI components

EDOCS
Siebel

Syndicated Content

Taxonomy example

Possible prebuilt WBI components

Cross Industry (those modules from Key ISV's for XCorp)

HR, Sales, Finance, Marketing, Procurement, etc

Cross Sector modules of: SAP, Siebel, Peoplesoft, Oracle Financials, Baan, Ariba, I2

B2E,B2C,B2B multi portal type services

IBM WebSphere Portal