

IBM WebSphere Business Integration Adapters



# Adapter for JD Edwards OneWorld User Guide

*Version 1.0.0*



IBM WebSphere Business Integration Adapters



# Adapter for JD Edwards OneWorld User Guide

*Version 1.0.0*

**Note!**

Before using this information and the product it supports, read the information in "Notices" on page 71.

**19December2003**

This edition of this document applies to IBM WebSphere Business Integration Adapter for JD Edwards OneWorld, version 1.0, and to all subsequent releases and modifications until otherwise indicated in new editions.

To send us your comments about this document, e-mail [doc-comments@us.ibm.com](mailto:doc-comments@us.ibm.com). We look forward to hearing from you.

When you send information to IBM, you grant IBM a nonexclusive right to use or distribute the information in any way it believes appropriate without incurring any obligation to you.

© Copyright International Business Machines Corporation 2003. All rights reserved.

US Government Users Restricted Rights – Use, duplication or disclosure restricted by GSA ADP Schedule Contract with IBM Corp.

---

# Contents

<b>About this document</b>	<b>v</b>
Audience	v
Prerequisites for this document	v
Related documents	v
Typographic conventions	vi
<b>New in this release</b>	<b>vii</b>
New in Release 1.0.0	vii
<b>Chapter 1. Overview</b>	<b>1</b>
Terminology	1
Connector overview	2
Connector architecture	2
How the connector works	5
<b>Chapter 2. Installing the adapter</b>	<b>9</b>
Compatibility	9
Assumptions and third-party dependencies	9
Installing the adapter for JD Edwards OneWorld and related files	10
Connector file structure	11
Post-installation tasks	11
<b>Chapter 3. Configuring the adapter</b>	<b>13</b>
Configuring the connector	13
Starting the connector	14
Stopping the connector	15
Installing and configuring IBM event store	15
Using log and trace files	16
<b>Chapter 4. Creating and modifying business objects</b>	<b>17</b>
Overview of the ODA for OneWorld	17
Generating business object definitions	17
Uploading business object files	26
<b>Chapter 5. Understanding business objects</b>	<b>27</b>
Defining metadata	27
Connector business object structure	27
Sample business object properties	32
Generating business objects	35
<b>Chapter 6. Error handling</b>	<b>37</b>
Error handling	37
Logging	37
Tracing	38
<b>Appendix A. Standard configuration properties for connectors</b>	<b>39</b>
New and deleted properties	39
Configuring standard connector properties	39
Summary of standard properties	40
Standard configuration properties	44
<b>Appendix B. Connector Configurator</b>	<b>55</b>
Overview of Connector Configurator	55

Starting Connector Configurator . . . . .	56
Running Configurator from System Manager . . . . .	57
Creating a connector-specific property template . . . . .	57
Creating a new configuration file . . . . .	59
Using an existing file . . . . .	60
Completing a configuration file. . . . .	61
Setting the configuration file properties . . . . .	62
Saving your configuration file . . . . .	67
Changing a configuration file . . . . .	68
Completing the configuration . . . . .	68
Using Connector Configurator in a globalized environment . . . . .	68
<b>Notices . . . . .</b>	<b>71</b>
Programming interface information . . . . .	72
Trademarks and service marks . . . . .	72

---

## About this document

IBM<sup>R</sup> WebSphere<sup>R</sup>Business Integration Adapter portfolio supplies integration connectivity for leading e-business technologies, enterprise applications, legacy, and mainframe systems. The product set includes tools and templates for customizing, creating, and managing components for business process integration.

This document describes the installation, configuration, business object development, and troubleshooting for the IBM WebSphere Business Integration Adapter for JD Edwards OneWorld.

---

## Audience

This document is for consultants, developers, and system administrators who support and manage the WebSphere business integration system at customer sites.

---

## Prerequisites for this document

Users of this document should be familiar with the WebSphere business integration system, with business object and collaboration development, and with the JD Edwards OneWorld technology.

---

## Related documents

The complete set of documentation available with this product describes the features and components common to all WebSphere Business Integration Adapter installations, and includes reference material on specific components.

You can install the documentation from the following sites:

- For general adapter information; for using adapters with WebSphere message brokers (WebSphere MQ Integrator, WebSphere MQ Integrator Broker, WebSphere Business Integration Message Broker); and for using adapters with WebSphere Application Server:  
<http://www.ibm.com/websphere/integration/wbiadapters/infocenter>
- For using adapters with InterChange Server:  
<http://www.ibm.com/websphere/integration/wicserver/infocenter>  
<http://www.ibm.com/websphere/integration/wbicollaborations/infocenter>
- For more information about message brokers (WebSphere MQ Integrator Broker, WebSphere MQ Integrator, and WebSphere Business Integration Message Broker):  
<http://www.ibm.com/software/integration/mqfamily/library/manualsa/>For more information about WebSphere Application Server:  
<http://www.ibm.com/software/webservers/appserv/library.html>

These sites contain simple directions for downloading, installing, and viewing the documentation.

The documentation set consists of Portable Document Format (PDF) files and files in HTML format. To read it, you need an HTML browser such as Netscape Navigator (version 4.7 or higher) or Internet Explorer (version 5.5 or higher) and

Adobe Acrobat Reader (Version 4.0.5 or higher). For the latest version of Adobe Acrobat Reader for your platform, go to the Adobe Web site (<http://www.adobe.com>).

---

## Typographic conventions

This document uses the following conventions:

---

<code>courier font</code>	Indicates a literal value, such as a command name, filename, information that you type, or information that the system prints on the screen.
<b>bold</b>	Indicates a new term the first time that it appears.
<i>italic, italic</i>	Indicates a variable name or a cross-reference.
<i>blue outline</i>	A blue outline, which is visible only when you view the manual online, indicates a cross-reference hyperlink. Click inside the outline to jump to the object of the reference.
{ }	In a syntax line, curly braces surround a set of options from which you must choose one and only one.
[ ]	In a syntax line, square brackets surround an optional parameter.
...	In a syntax line, ellipses indicate a repetition of the previous parameter. For example, <code>option[,...]</code> means that you can enter multiple, comma-separated options.
< >	In a naming convention, angle brackets surround individual elements of a name to distinguish them from each other, as in <code>&lt;server_name&gt;&lt;connector_name&gt;tmp.log</code> .
/, \	In this document, backslashes (\) are used as the convention for directory paths. For UNIX installations, substitute slashes (/) for backslashes. All product pathnames are relative to the directory where the product is installed on your system.
<code>%text%</code> and <code>\$text</code>	Text within percent (%) signs indicates the value of the Windows text system variable or user variable. The equivalent notation in a UNIX environment is <code>\$text</code> , indicating the value of the text UNIX environment variable.
<i>ProductDir</i>	Represents the directory where the product is installed.

---



---

## **New in this release**

---

### **New in Release 1.0.0**

Version 1.0.0 is the first release of the Adapter for JD Edwards OneWorld.



---

## Chapter 1. Overview

This chapter provides an overview of the connector component of the WebSphere Business Integration Adapter for JD Edwards OneWorld and contains the following sections:

- “Terminology”
- “Connector overview” on page 2
- “Connector architecture” on page 2
- “How the connector works” on page 5

---

### Terminology

The following terms are used in this guide:

- **ASI (Application-Specific Information)** Metadata tailored to a particular application or technology. ASI exists at both the attribute, verb, and business object level of a business object. See also **Verb ASI**.
- **BF (Business Function)** A collection of C functions and their associated data structures, logically grouped to perform a specific task. Regular business functions perform simple tasks, such as tax calculation or account number validation. Master business functions perform tasks that are more complex and can call several regular business functions.
- **BO (Business Object)** A set of attributes that represent a business entity (such as Employee) and an action on the data (such as a create or update operation). Components of the WebSphere business integration system use business objects to exchange information and trigger actions.
- **BO (Business Object) handler** A connector component that contains methods that interact with an application and that transforms request business objects into application operations.
- **Connector agent** A component of the connector that processes service call requests from the Integration broker as well as event notifications from OneWorld.
- **Connection object** A connection is a reference to an application that can contain state information. For every instance of a connection on the adapter side, there is a corresponding object on the JD Edwards OneWorld side. The BO handler creates connections when required, up to the maximum size of the value of the pool size property. The new connections are maintained in the pool and are re-used by multiple business object executions.
- **Connection pool** A repository used to store and retrieve connection objects.
- **GenJava** A utility provided by JD Edwards OneWorld to generate Java wrappers for the business functions running as part of the OneWorld server. GenJava creates Java Class files for the interface classes and associated data structures, compiles the generated Java files, generates Java docs, and packages them into two jar files: one for Java classes and the other for Java doc.
- **Interoperability framework** Allows seamless sharing of function and information between disparate software applications. Includes business function wrappers that provide a single point of access to major and minor business functions. Also includes master business function wrappers.

- **Java objects** Wrappers, implemented in Java, around OneWorld business functions and data structures. Java objects provide a one-to-one correspondence with OneWorld business functions.
- **ODA (Object Discovery Agent)** A tool that automatically generates a business object definition by examining specified entities within the application and “discovering” the elements of these entities that correspond to business object attributes. When you install the adapter, the ODA is automatically installed.
- **Verb ASI (application-specific information)** For a given verb, the verb ASI specifies how the connector should process the business object when that verb is active. It can contain the name of the method to call to process the current request business object.

---

## Connector overview

The connector for JD Edwards OneWorld is a runtime component of the WebSphere Business Integration Adapter for JD Edwards OneWorld. The JD Edwards OneWorld Adapter includes a connector, message files, configuration tools, and an Object Discovery Agent (ODA). The connector allows the WebSphere integration broker to exchange data between business objects and their corresponding OneWorld objects running on a OneWorld server.

The primary role of the generic OneWorld adapter is to act as an agent to facilitate communication and data exchange between a OneWorld server and the integration broker. The adapter is developed in Java and uses the OneWorld component jar files generated by the GenJava interface tool, provided by OneWorld.

OneWorld objects are business functions that run as part of the OneWorld server. The WebSphere Business Integration Adapter for OneWorld uses the OneWorld Java connector to invoke business functions.

---

## Connector architecture

Connectors consist of two components: the connector framework and the application-specific component. The connector framework, whose code is common to all connectors, acts as an intermediary between the integration broker and the application-specific component. The application-specific component contains code tailored to a particular technology (in this case, JD Edwards OneWorld) or application. The connector framework provides the following services between the integration broker and the application-specific component:

- Receives and sends business objects
- Manages the exchange of startup and administrative messages

This document contains information about both the connector framework and the application-specific component. It refers to both of these components as the connector.

All WebSphere business integration adapters operate with an integration broker. The connector for JD Edwards OneWorld operates with WebSphere InterChange Server, WebSphere MQ Integrator Broker, or WebSphere Application Server. For more information, see the installation and implementation documentation of your broker.

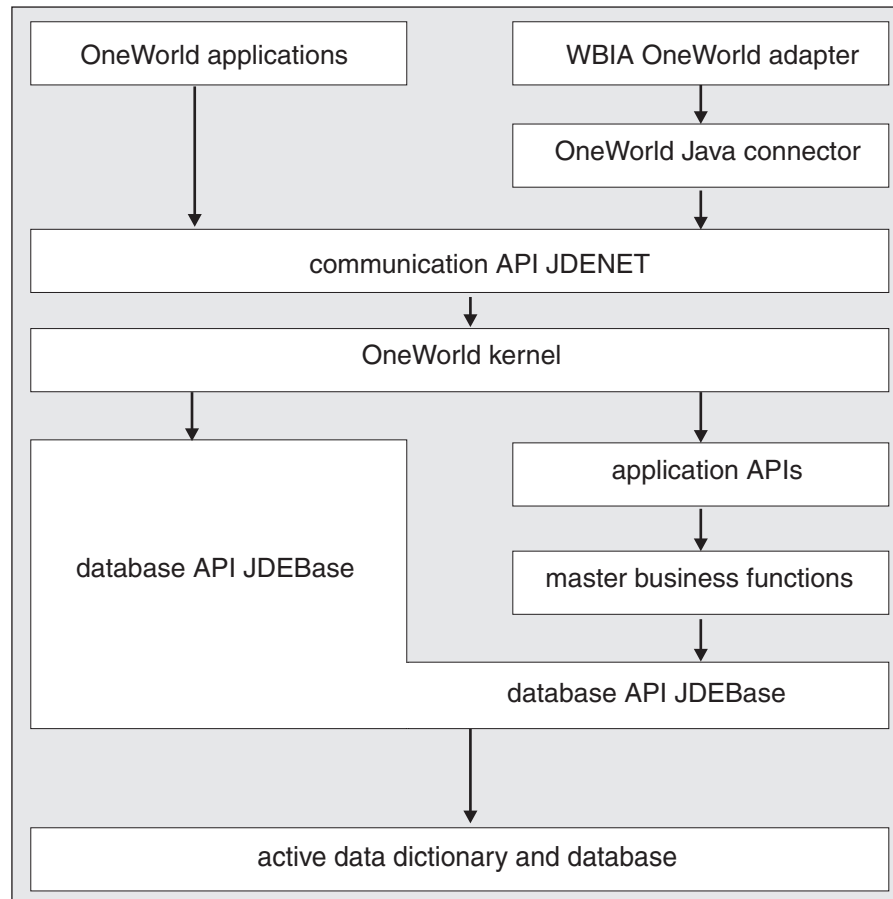


Figure 1. Business object architecture

## Business functions

OneWorld business functions perform specific tasks, such as journal entry transactions, calculating depreciation, and sales order transactions. There are two types of business functions. Regular business functions perform simple tasks, such as tax calculation or account number validation. Master business functions perform tasks that are more complex, and can call several regular business functions to perform those tasks.

The interoperability framework includes business function wrappers that provide a single point of access to major and minor business functions. It also includes master business function wrappers. The following figure illustrates how OneWorld and third party applications interact using APIs and master business functions.

OneWorld supports several APIs for communication with third-party applications such as Java, COM, Oracle Database Applications, XML, and Table Conversion.

The adapter uses the Java APIs for invoking business functions in OneWorld. The business objects map to business function classes or objects.

A summary of the implementation is as follows:

1. Prepare an iJDEScript file for running the GenJava process. Refer to “Sample GenJava script file” on page 32.

2. Run the GenJava utility to generate the jar files for OneWorld objects.
3. Set the key fields.
4. Add the business objects to the adapter configuration file. Refer to Appendix B, “Connector Configurator,” on page 55.
5. Start the adapter. Refer to “Starting the connector” on page 14.

## Request processing

When the connector framework receives a request from the broker, it calls the `doVerbFor()` method of the business-object-handler class associated with the business object definition of the request business object. The role of the `doVerbFor()` method is to determine the verb processing to perform, based on the active verb of the request business object. It obtains information from the request business object to build and send requests for operations to the application.

When the connector framework passes the request business object to `doVerbFor()`, if the business object maps to an interface object, the BO handler reads the verb ASI and translates it into a series of callable functions. You can give these functions specific semantic meaning through the Object Discovery Agent (ODA) running in Business Object Designer. For details about using the ODA to assign a method call sequence to a verb, see Chapter 4, “Creating and modifying business objects,” on page 17. The order in which the calls are made is critical to the successful processing of the object.

In the case of an interface business object with a blank verb ASI, the BO handler searches for a business function attribute with populated parameters and calls that business function. Only one method can be populated; otherwise, if multiple methods are populated but the verb ASI is blank, the connector logs an error and returns a FAIL code. For details about error processing, see “Error handling” on page 37.

If the business object maps to a business function object, the BO handler invokes the specific business function with the data specified in the business object.

The connector does not support any specific verbs for the interface business objects, but using the ODA, the user can configure verbs for a business object. The standard verbs used by WebSphere Business Integration are Create, Retrieve, Update, and Delete.

For business function business objects, the ODA generates a default verb, Execute. The verb ASI is not required for these business objects.

To support special access permissions for a business object, a meta business object is defined with the name `ACCESS_LEVEL`. The `ACCESS_LEVEL` business object has two attributes, `Username` and `Password`, both of type `String`. A OneWorld business object that has special access rules and cannot be accessed through the `Username` specified in the connector configuration file, would have this business object (`ACCESS_LEVEL`) as a child business object with single cardinality. You must add this child business object only to the top-level business object in a `doVerbFor` call. All the child business objects for this top-level business object must be accessible through the `Username` specified in the `ACCESS_LEVEL` child business object.

The BO handler checks to see if the top-level business object has a child business object of type `ACCESS_LEVEL`. If yes, and the value for the `Username` attribute in that business object is different from what is being used by the adapter, then it opens a new connection for processing this business object using the value for attributes

Username and Password of the child business object. The connection closes after the processing of the business object is complete.

If the top-level business object does not have a child business object of type ACCESS\_LEVEL, or the value of the Username attribute is the same as the Username specified in the adapter properties, the BO handler fetches a connection object from the pool.

If there is no available connection object and the maximum limit of the pool size is not reached, the BO handler creates a new connection object in the pool. If there is no available connection object and the maximum limit of the pool size is reached, then it waits for a connection object become available.

## Processing application events

Event notification requires the installation of the event package, BIA\_EVENT, shipped with the adapter and the creation of event and archive tables in the JDE database.

For information about how to install and configure the BIA\_EVENT event package, refer to “Installing and configuring IBM event store” on page 15.

The creation, update, or deletion of any record in the JD Edwards OneWorld application can be treated as an event. You can use table triggers, supported by OneWorld, to populate the event table. You can also use any other JD Edwards recommended method to generate events into the event table. During a call to pollForEvents, these records are obtained and processed. The Event table stores information about the event, as described in Table 6 on page 30.

**Note:** The Event ID must be unique in the Event table.

**Note:** The connector uses the information in Table 6 during event subscription to build corresponding business objects and to send those objects to the connector framework for further processing.

### Retrieving business objects for event processing

Retrieval of objects for event processing is based on both key and non-key attributes. It is mandatory that the business object support the Execute verb if the business object represents a JD Edwards business function and that it supports the Retrieve verb if the business objects represents an interface.

### Event management

The connector polls the IBM Event table (F5501005) at a regular interval, retrieves the events, and processes the events first by priority and then sequentially. When the connector has processed an event, the event’s status is updated appropriately.

The setting of the ArchiveProcessed property determines whether the connector archives an event into the IBM Archive table (F5501006) after updating its status. For more information on the ArchiveProcessed property, see “Configuring the connector” on page 13. Table 3 on page 13 illustrates the archiving behavior depending on the setting of the ArchiveProcessed property.

---

## How the connector works

This section describes how the different parts of the connector process a business object:

1. Upon startup of the connector, the connector's Agent class performs the following initialization (Init) processes:
  - Retrieves configuration properties.
  - Fetches the Username and Password, and Environment from the connector configuration file.
  - Creates a OneWorld connector object.
  - Logs in to the OneWorld server using the Login method and parameters using the Username and Password as fetched above. This method returns a SessionID.
  - Creates an instance of the OneWorld interface object.
  - Adds the connector, OneWorldInterface, and SessionID to the connection pool.
2. The OneWorld BO handler reads the verb ASI and translates it into a sequence of callable functions or child objects.
  - If the business object has a child business object of type ACCESS\_LEVEL and the Username attribute within this child business object is populated and has a value that is different from what is used by the adapter, then the BO handler opens a new connection using the values of the Username and Password attributes specified for the ACCESS\_LEVEL business object. All such business objects must have both Username and Password attributes populated.
  - If the connection creation fails because the application is down, the BO handler returns APPRESPONSETIMEOUT.
  - If the connection creation fails because the Username/Password is wrong, then the BO handler logs an error and returns a FAIL status.
  - If the business object does not have a child business object of type ACCESS\_LEVEL, or the value for the Username attribute in this business object is null or has the same value as specified for the adapter Username, then it fetches a connection from the available connection pool. The following steps represent what would happen in the connection pool when the BO handler requests an available connection:
    - a. The BO handler checks to see if there are available connections in the pool.
    - b. If yes, it checks for the validity of the connection. If it is not valid it attempts to recreate the connection.
    - c. If the connection creation fails, it returns APPRESPONSETIMEOUT status.
    - d. The BO handler removes the connection from the available list and adds it to the busy list.
    - e. If the connection is not available and the maximum number of connections is less than the pool size, then it opens a new connection and adds it to the connection pool's busy list. If opening a new connection returns a failure, the adapter returns APPRESPONSETIMEOUT.
    - f. If no connections are available and the maximum limit of the pool size has been reached, then the doVerbFor thread waits until a connection becomes available.
  - If the business object is of type BFN, then the adapter performs the following actions:
    - a. The adapter starts a transaction using the BeginTransaction method of the OneWorld class OneWorldInterface.
    - b. If the business object maps to an interface class and if the verb ASI is blank, the adapter finds the first method attribute or the first child object that is populated in the business object and executes it.



- c. If the verb ASI is populated, the adapter calls `InvokeMethods`, which loops through all the methods specified in the verb ASI.
  - d. If the business object maps to a business function, `Invoker` executes the business function that maps to the business object. If there are child business objects that are not of type `ACCESS_LEVEL`, the BO handler loops through them and executes the business functions corresponding to them in the order in which they are defined in the top-level business object.
  - e. `Invoker` constructs the arguments based on the attributes defined in the business object and then invokes the method on `OneWorld` Java objects using reflection APIs.
  - f. If the execution of the complete business object succeeds, the BO handler commits the transaction using the `Commit` method on object `OneWorldInterface` and returns a `VALCHANGED` status.
    - Releases the connection to the connection pool.
    - Returns `VALCHANGED` upon successful execution of the business functions.
    - Returns `FAIL` if the business object is of type `BFN` and maps to the `Interface` class and the verb ASI is blank and no attributes are populated.
    - Returns `FAIL` when processing fails.
3. The `ConnectionEventStore` class performs the following for subscription delivery:
- When the connector encounters an event, it
    - creates a business object of the type specified by the event,
    - sets the key and non-key values for the business object (using the object key specified in the event table),
    - sets the verb as `Execute` if the business object is of type business function,
    - sets the verb as `Retrieve` if the business object is of type interface.
  - After it retrieves the business object, the connector sends it to the integration broker with the verb specified in the event.
4. Terminates (`Terminate`) by closing all the connections from the connection pool.



---

## Chapter 2. Installing the adapter

- “Compatibility”
- “Assumptions and third-party dependencies”
- “Installing the adapter for JD Edwards OneWorld and related files” on page 10
- “Connector file structure” on page 11
- “Post-installation tasks” on page 11

---

### Compatibility

The adapter framework that an adapter uses must be compatible with the version of the integration broker (or brokers) with which the adapter is communicating. The 1.0.0 version of the adapter for OneWorld is supported on the following adapter framework and integration brokers:

- **Adapter framework:**
  - WebSphere Business Integration Adapter Framework versions 2.1, 2.2, 2.3.x, and 2.4
- **Integration brokers:**
  - WebSphere InterChange Server, version 4.1x, 4.2.x
  - WebSphere MQ Integrator, version 2.1.0
  - WebSphere MQ Integrator Broker, version 2.1.0
  - WebSphere Business Integration Message Broker, version 5.0
  - WebSphere Application Server Enterprise, version 5.0.2, with WebSphere Studio Application Developer Integration Edition, version 5.0.1

See *Release Notes* for any exceptions.

**Note:** For instructions on installing the integration broker and its prerequisites, see the following guides.

For WebSphere InterChange Server (ICS), see the *System Installation Guide for UNIX or for Windows*.

For message brokers (WebSphere MQ Integrator Broker, WebSphere MQ Integrator, and WebSphere Business Integration Message Broker), see *Implementing Adapters with WebSphere Message Brokers*, and the installation documentation for the message broker. Some of this can be found at the following Web site:

<http://www.ibm.com/software/integration/mqfamily/library/manualsa/>

For WebSphere Application Server, see *Implementing Adapters with WebSphere Application Server* and the documentation at

<http://www.ibm.com/software/webservers/appserv/library.html>

---

### Assumptions and third-party dependencies

Review the following assumptions and software requirements before you install the connector for JD Edwards OneWorld.

## Platform requirements

The connector runs on the following platforms:

- Windows 2000
- Solaris 8.0
- HP/UX 11i
- AIX 5.2

---

## Installing the adapter for JD Edwards OneWorld and related files

For information on installing WebSphere Business Integration adapter products, refer to the *Installation Guide for WebSphere Business Integration Adapters*, located in the WebSphere Integration Adapters Infocenter at the following site:

<http://www.ibm.com/websphere/integration/wbiadapters/infocenter>

## WebSphere Business Integration Adapter directories and files

After the installation is complete, you can view the file system and its contents. The folders and files created vary depending on the choices made during the installation and on the operating system.

The Installer copies the standard files associated with the connector into your system. It installs the connector agent into the *ProductDir*\connectors\OneWorld directory, and adds a shortcut for the connector agent to the Start menu. Note that *ProductDir* represents the directory where the IBM WebSphere Business Integration Adapters product is installed. The environment variable contains the *ProductDir* directory path, which is *IBMWebSphereAdapters* by default.

### Environment variables

If you chose WebSphere MQ Integrator Broker or WebSphere Application Server as your broker, Installer takes the actions described in Table 1 to create and update environment variables on the computer. These actions are not taken if you chose WebSphere InterChange Server as your integration broker, because the environment variables required for that broker are created during installation of the broker.

Table 1. Actions taken by Installer for environment variables

Environment variable name	Installer action
CROSSWORLDS	Creates this environment variable to reference the WebSphere Business Integration Adapter product directory, as specified when using Installer.
MQ_LIB	Creates this environment variable to contain the path to the Java\lib directory within the WebSphere MQ installation, as specified when using Installer.
CLASSPATH	Adds the following entries: <i>ProductDir</i> \lib\rt.jar; <i>ProductDir</i> \DataHandlers\CwDataHandler.jar;
PATH	Adds the following entries: <i>ProductDir</i> \bin\hotspot; <i>ProductDir</i> \bin\classic; <i>ProductDir</i> \bin;

---

## Connector file structure

The Installer copies the standard files associated with the connector into your system.

The utility installs the connector into the *ProductDir*\connectors\OneWorld directory, and adds a shortcut for the connector to the Start menu. Note that *ProductDir* represents the directory where the product is installed.

Table 2 describes the file structure used by the connector, and shows the files that are automatically installed when you choose to install the connector through the Installer.

*Table 2. File structure for the connector*

Subdirectory of <i>ProductDir</i>	Description
\connectors\OneWorld\BIA_OneWorld.jar	Contains classes used by the OneWorld connector only
\connectors\OneWorld\start_OneWorld.bat	The startup script for the generic connector (NT/2000)
\connectors\OneWorld\start_OneWorld.sh	The startup script for the generic connector (Unix)
\connectors\OneWorld\dependencies\IBMEventsInterop.jar	Contains IBM eventstore classes
\connectors\OneWorld\dependencies\BIA_EVENT.exe	Executable that installs the eventstore package
\connectors\OneWorld\dependencies\jdeinterop.ini	Contains the enterprise server
\connectors\messages\BIA_OneWorldAdapter.txt	Message file for the connector
\ODA\OneWorld\BIA_OneWorldODA.jar	The OneWorld ODA
\ODA\OneWorld\start_OneWorldODA.bat	The ODA startup file
\ODA\OneWorld\BIA_OneWorldODA.sh	(Unix users only) The ODA start up file
\ODA\messages\BIA_OneWorldODAAgent_de_DE.txt	Message file for the ODA (German text strings)
\ODA\messages\BIA_OneWorldODAAgent_en_US.txt	Message file for the ODA (US English text strings)
\ODA\messages\BIA_OneWorldODAAgent_es_ES.txt	Message file for the ODA (Spanish text strings)
\ODA\messages\BIA_OneWorldODAAgent_fr_FR.txt	Message file for the ODA (French text strings)
\ODA\messages\BIA_OneWorldODAAgent_it_IT.txt	Message file for the ODA (Italian text strings)
\ODA\messages\BIA_OneWorldODAAgent_ja_JP.txt	Message file for the ODA (Japanese text strings)
\ODA\messages\BIA_OneWorldODAAgent_ko_KR.txt	Message file for the ODA (Korean text strings)
\ODA\messages\BIA_OneWorldODAAgent_pt_BR.txt	Message file for the ODA (Portuguese - Brazil text strings)
\ODA\messages\BIA_OneWorldODAAgent_zh_CN.txt	Message file for the ODA (Simplified Chinese text strings)
\ODA\messages\BIA_OneWorldODAAgent_zh_TW.txt	Message file for the ODA (Traditional Chinese text strings)
repository\OneWorld\BIA_CN_OneWorld.txt	Repository definition for the connector. The default name is BIA_OneWorld.txt.

**Note:** All product pathnames are relative to the directory where the product is installed on your system.

---

## Post-installation tasks

After you have successfully installed the Adapter for JD Edwards OneWorld, complete the following post-installation tasks:

- “Configure the adapter”
- “Copy files” on page 12
- “Create an ODBC connection” on page 12

### Configure the adapter

After you install the adapter and before you start it for the first time, you must configure the adapter. For details, see Chapter 3, “Configuring the adapter,” on page 13.

## Copy files

During installation GenJava generates .jar files containing business function classes used by the adapter. Copy these .jar files into the ProductDir\connectors\OneWorld\repository folder. The adapter and ODA dynamically upload these files.

Additionally, copy the Kernal.jar and Connector.jar files, present in the B7334\System\classes folder to the ProductDir\connectors\OneWorld\dependencies folder.

## Create an ODBC connection

The OneWorld adapter requires an ODBC data source for each DB2 UDB database in order to start and pull the connector. For information about how to create an ODBC connection, refer to the JD Edwards *Installation Guide*.

---

## Chapter 3. Configuring the adapter

After installation and before startup, you must configure components as described in this section.

- “Configuring the connector”
- “Starting the connector” on page 14
- “Stopping the connector” on page 15
- “Using log and trace files” on page 16

---

### Configuring the connector

Connectors have two types of configuration properties: standard and adapter-specific. You must set the values of these properties using Connector Configurator before running the adapter. For further information, see Appendix B, “Connector Configurator,” on page 55.

A connector obtains its configuration values at startup. During a runtime session, you might want to change the values of one or more connector properties. Changes to some connector configuration properties take effect immediately. Changes to other connector properties require connector component restart or system restart after a change. To determine whether a property is dynamic (taking effect immediately) or static (requiring either connector component restart or system restart), refer to the Update Method column in the Connector Properties window of the System Manager.

#### Standard connector properties

Standard connector configuration properties provide information that all adapters use. See Appendix A, “Standard configuration properties for connectors,” on page 39 for documentation of these properties.

#### Connector-specific properties

Connector-specific configuration properties provide information needed by the connector at runtime. These properties also provide a way for you to change static information or logic within the connector without having to recode and rebuild it.

To configure connector-specific properties, use Connector Configurator. Click the **Application Config Properties** tab to add or modify configuration properties. For more information, see Appendix B, “Connector Configurator,” on page 55.

Table 3 lists the connector-specific configuration properties for the connector, along with their descriptions and possible values. See the sections that follow for details about the properties.

*Table 3. Connector-specific configuration properties*

Name	Possible values	Default value
Username	JDE	None
Password	JDE	None
PoolSize	5	1
Environment	DV7334	None

Table 3. Connector-specific configuration properties (continued)

Name	Possible values	Default value
ConnectorId	None.	None.
EventStoreFactory	com.ibm.adapters.oneworld. OneWorldEventStoreFactory Instance	com.ibm.adapters. oneworld. OneWorldEventStore FactoryInstance
InDoubtEvents	Reprocess	Reprocess
ArchiveProcessed	True, False	True

### Username

The Username for connecting with the OneWorld application. This is a required property.

### Password

The Password for connecting with the OneWorld application. This is a required property.

### PoolSize

The maximum number of connections in the Connection Pool. This should not be more than the maximum allowed connections specified in the JDEInterop.ini file. This is a required property.

### Environment

Name of the environment in which the connection has to be done within OneWorld. This is a required property.

### ConnectorId

This configuration property is not supported in this release.

### EventStoreFactory

This property is the name of the event store factory instance class. The value is com.ibm.adapters.oneworld.OneWorldEventStoreFactoryInstance.

### InDoubtEvents

Decides whether or not to reprocess incomplete events. Default value is Reprocess and must not be changed.

### ArchiveProcessed

Checks if the default value is set or not. If ArchiveProcessed is set to true, the archival business function archives the event into the archive table. If the property is set to false or is not set, the archival business function is not called.

---

## Starting the connector

To start the connector, run the start\_OneWorld.bat or start\_OneWorld.sh script.

If the connector is running with WebSphere MQ Integrator Broker, you must also set the -c option.

The start command for the connector has this format:

```
<script name> <connector name> {<ics name> | -c <MQI configuration file>}
```

So, for WebSphere InterChange Server:



```
start_OneWorld OneWorld WebSphereICS
```

Or, for WebSphere MQ Integrator Broker:

```
start_OneWorld OneWorld -c C:\WebSphereAdapters\connectors\OneWorldAgentConfig.cfg
```

In Windows, select **Start>Programs>IBM WebSphere Business Integration Adapters>Connectors>OneWorld** to start the connector for OneWorld.

---

## Stopping the connector

To stop the connector, you can use Adapter Monitor. The toolbar lets you activate, de-activate, pause, shutdown and delete the connector.

---

## Installing and configuring IBM event store

The adapter package includes an executable BIA\_EVENT.exe file. This executable file installs the IBM event store components. JD Edwards refers to this as a software update. Follow the JD Edwards instructions for applying a software update. Event store (software update) components comprise an event and archive table and business functions used for retrieving, deleting, updating, and archiving events in the event and archive table.

Business functions for event handling, table definition files, and data items are part of the event package BIA\_EVENT.exe. You must prepare the deployment server or workstation before executing a software update, then follow the software update procedure. The JD Edwards *Software Update Installation Guide* describes the preparation and update procedures in detail.

The BIA\_EVENT.exe file creates the required business functions and table definition scripts, however you must create the event and archive tables using the JD Edwards client. Once you have successfully installed the software update on the deployment server or workstation you must deploy the components to the enterprise server so the adapter can find the event store.

The contents of the BIA\_EVENT package are as follows:

- B551005 — Retrieve\_WBIAEvents
- B551006 — Update\_WBIAEvent
- B551007 — Archive\_WBIAEvent
- B551008 — Delete\_WBIAEvent
- B551009 — Recover\_WBIAEvent

The following are the Tables Definitions files:

- F5501005.h — Event table structure
- F5501006.h — Archive table structure

The following data items are included:

- EVENT\_ID
- EVT\_DESC
- EVT\_PRTY
- EVT\_STATUS
- EVT\_TIME
- ADAPTER\_ID

- ARCHIVE\_T
- OBJ\_KEY
- OBJ\_NAME
- OBJ\_VERB

**Note:** Other data items exist in the package but are not used by the tables and will be removed from the package in the next release.

---

## Using log and trace files

The adapter components provide several levels of message logging and tracing. The connector uses the adapter framework to log error, informational, and trace messages. Error and informational messages are recorded in the log file, and trace messages and their corresponding trace levels (0 to 5) are recorded in a trace file. For details about logging and trace levels, see Chapter 6, “Error handling,” on page 37.

You configure both the log and trace file names, as well as the trace level, in Connector Configurator. For details about this tool, see Appendix B, “Connector Configurator,” on page 55.

Error messages for ODA are logged into the trace file name specified for the ODA. If an incorrect trace file name is specified, then the messages are sent to the screen prompt where the ODA is running. Trace files and the trace level are configured in Business Object Designer. The process is described in “Configure the agent” on page 18. The ODA trace levels are the same as the connector trace levels, defined in “Tracing” on page 38.

---

## Chapter 4. Creating and modifying business objects

This chapter describes the Object Discovery Agent (ODA) for JD Edwards OneWorld, and how to use it to generate business object definitions for the IBM WebSphere Business Integration Adapter for JD Edwards OneWorld.

This chapter contains the following sections:

- “Overview of the ODA for OneWorld”
- “Generating business object definitions”
- “Uploading business object files” on page 26

---

### Overview of the ODA for OneWorld

An ODA (Object Discovery Agent) enables you to generate business object definitions. A business object definition is a template for a business object. The ODA examines specified application objects, “discovers” the elements of those objects that correspond to business object attributes, and generates business object definitions to represent the information. Business Object Designer provides a graphical interface to access the Object Discovery Agent and to work with it interactively.

The Object Discovery Agent (ODA) for JD Edwards OneWorld generates business object definitions from the .jar files generated by GenJava. The Business Object Wizard automates the process of creating these definitions. You use the ODA to create business objects and Connector Configurator to configure the connector to support them. For information about Connector Configurator, see Appendix B, “Connector Configurator,” on page 55.

---

### Generating business object definitions

This section describes how to use the JD Edwards OneWorld ODA in Business Object Designer to generate business object definitions. For information on launching and using Business Object Designer, see *IBM WebSphere Business Integration Adapters Business Object Development Guide*.

#### Starting the ODA

The ODA can be run from any machine that can mount the file system on which the metadata repository (that is, the IDL files) resides, using the `start_OneWorldODA.bat` (NT/Windows 2000) or `start_OneWorldODA.sh` (Unix) start file. This file contains start parameters, including the paths to certain required OneWorld and connector .jar files.

The ODA for OneWorld has a default name of `OneWorldODA`. The name can be changed by changing the value of the `AGENTNAME` variable in the start script (`start_OneWorldODA.bat`).

To start the ODA, run this command:

```
start_OneWorldODA
```

## Running Business Object Designer

Business Object Designer provides a wizard that guides you through the steps to generate a business object definition using the ODA. The steps are as follows:

- "Select the agent"
- "Configure the agent"
- "Select a business object" on page 20
- "Confirm the object selection" on page 21

### Select the agent

1. Start Business Object Designer.
2. Click **File > New Using ODA**. The *Business Object Wizard - Step 1 of 6 - Select Agent* screen appears.
3. Select the ODA/AGENTNAME (from the start\_OneWorldODA script) in the **Located agents** list and click **Next**. (You may have to click **Find Agents** if the desired agent is not listed.)

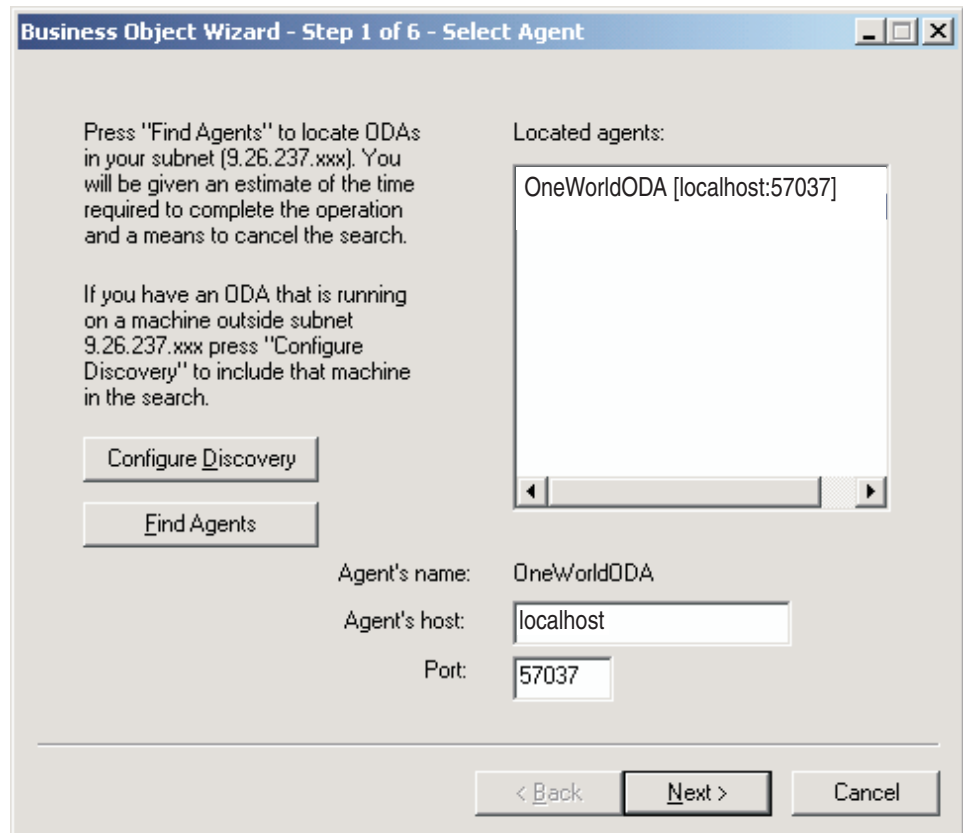


Figure 2. Select Agent screen

### Configure the agent

After you click **Next**, the *Business Object Wizard - Step 2 of 6 - Configure Agent* screen appears. Figure 3 on page 19 illustrates this screen with sample values.

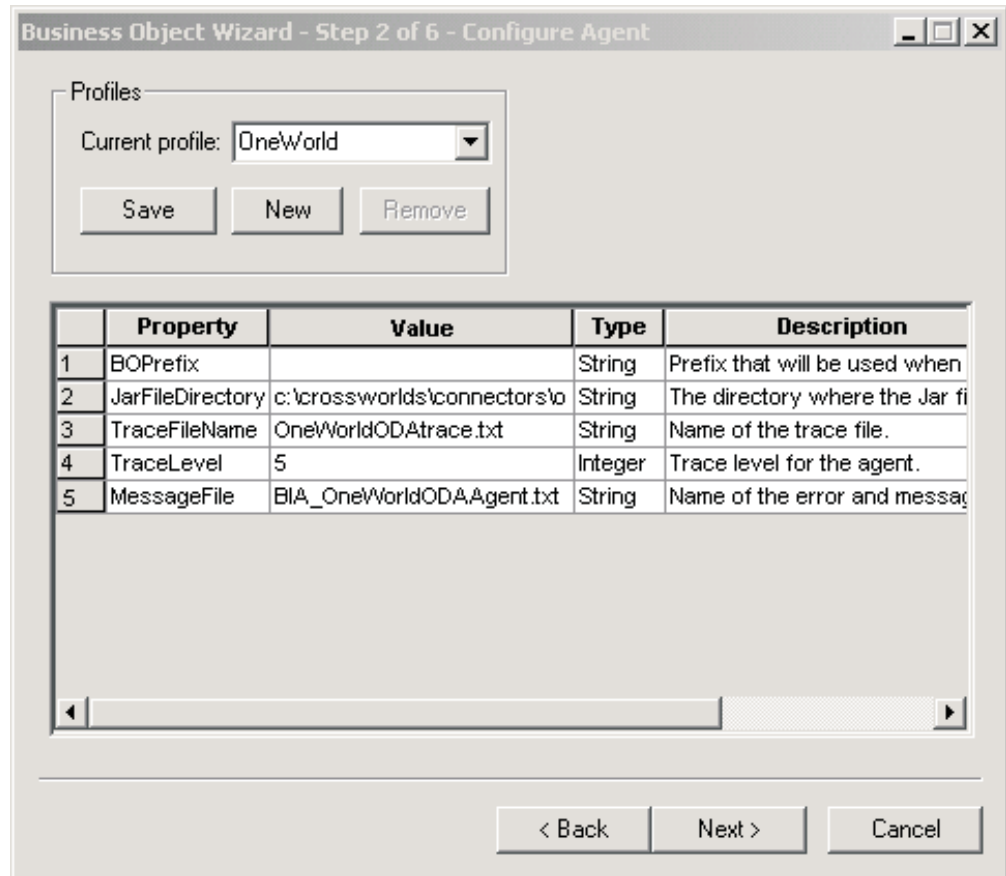


Figure 3. Configure Agent screen

The properties you set on this screen are described in Table 4. You can save all the values you enter on this screen to a profile. Instead of retyping the property data next time you run the ODA, you simply select a profile from the drop-down menu and re-use the saved values. You can save multiple profiles, each with a different set of specified values.

Table 4. Configure Agent properties

Property name	Default value	Type	Description
BOPrefix	None	String	The prefix that the ODA prepends to the names of the business objects it generates.
JarFileDirectory	None	String	(Required) The directory where the .jar files are located. All the .jar files having business functions that must be invoked using the adapter must be placed in this directory.
TraceFileName	None	String	The name of the trace message file; for example, OneWorldODAttrace.txt.
TraceLevel	5	Integer	(Required) The tracing level (from 0 to 5) for the Agent. For details about tracing levels, see "Tracing" on page 38.

Table 4. Configure Agent properties (continued)

Property name	Default value	Type	Description
MessageFile	None	String	(required) The name of the message file that contains all the messages displayed by the ODA. For OneWorld, the name of this file is BIA_OneWorldODAAgent.txt. If you do not correctly specify the name of the message file, the ODA will generate an error.

1. Use the **New** and **Save** buttons in the Profiles group box any time you want the ODA to create a new profile. When you use the ODA again, you can select an existing profile.
2. Type the value of each property, as defined in Table 4 on page 19.

**Note:** If you use a profile, the property values are filled in for you, though you can modify the values as needed. You can also save new values.

### Select a business object

The *Business Object Wizard - Step 3 of 6 - Select Source* screen appears, as illustrated in Figure 4 on page 21.

The following lists the rules associated with selecting objects for generation:

- Selecting a parent object automatically selects the children objects for generation. If you select the parent object as well as the children, then only the children object that you select are generated.
- Selecting a child object without selecting its parent causes the child object, but not the parent, to be generated.
- All child business objects are generated with single cardinality containment relationships.
- If a business object requires multiple cardinality behavior, then you must manually change the cardinality using Business Object Designer.
- The ODA does not mark the key fields of the business objects so you must manually mark the key fields in the business object before saving.
- You can select a .jar file for generation. This generates the definition of all the interface and business function business objects contained in the .jar file.

To determine which OneWorld objects listed on this screen are child objects of a high-level object, refer to the original GenJava file. You can also simply select all the OneWorld objects listed on this screen and generate their corresponding business objects. The resulting business objects will reflect the parent-child

relationships.

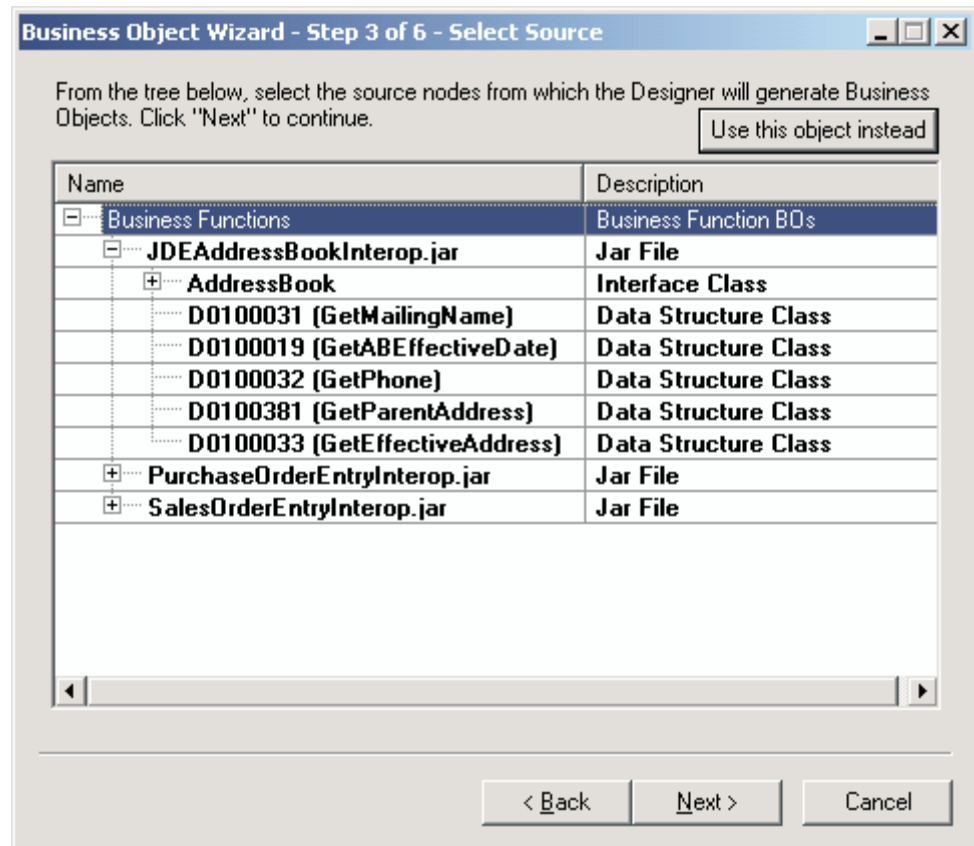


Figure 4. Select Source screen

1. If necessary, expand a OneWorld module to see a list of sub-objects.
2. Select the OneWorld object(s) you want to use.
3. Click Next.

### Confirm the object selection

The *Business Object Wizard - Step 4 of 6 - Confirm source nodes for business object definitions* screen appears. It shows the object(s) you selected.

For the business objects you generate using the ODA, you must manually mark any key fields in Business Object Designer before saving the business objects. The ODA does not mark any attributes as key fields.

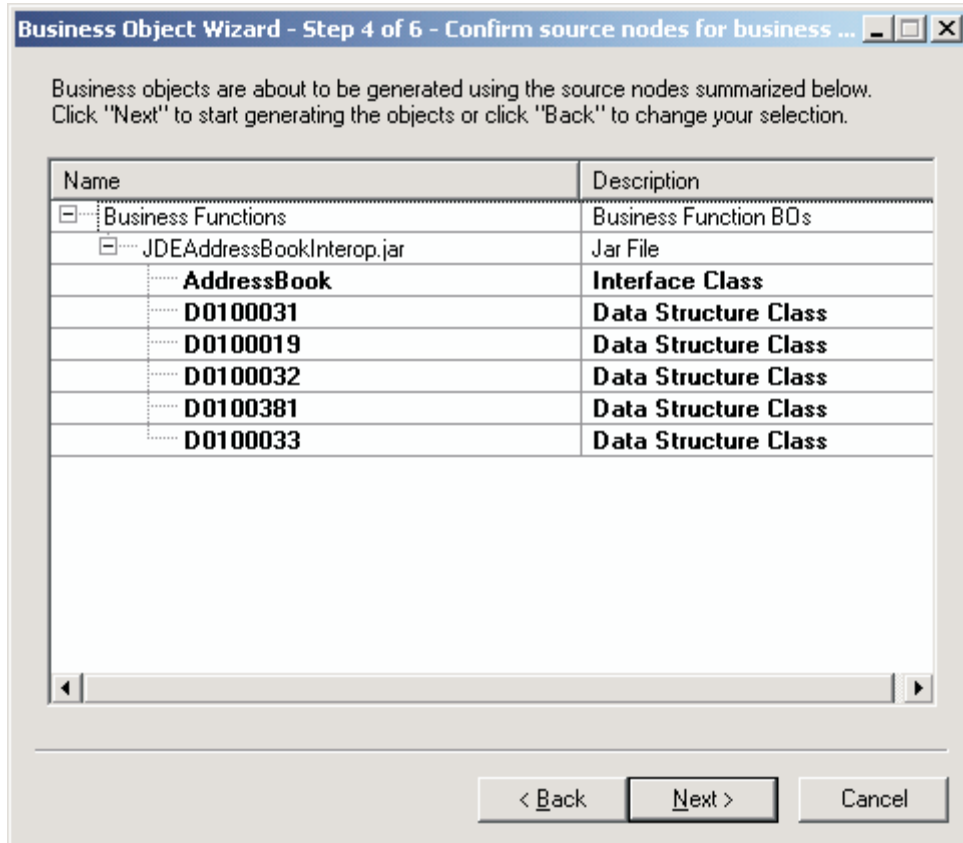


Figure 5. Confirm source node screen

Click **Back** to make changes or **Next** to confirm that the list is correct.

The *Business Object Wizard - Step 5 of 6 - Generating business objects...* screen appears with a message stating that the wizard is generating the business objects.

Check the option to open the selected business object(s) in a separate window.

### Specifying business object information

After you create a business object, you can specify the verbs that are valid for the object, the method sequence of a given verb on the object, the business object-level ASI, and the attribute-level ASI. This section describes how to specify this information, using the ODA with Business Object Designer. For a detailed description of these categories of information and what they mean for business object structure in the JD Edwards OneWorld connector, see Chapter 5, "Understanding business objects," on page 27.

### Selecting verbs:

In Business Object Designer, the first screen that appears when you finish creating a business object and then open it in a separate window is the *BO Properties - Select Verbs for component* screen. Figure 6 on page 23 illustrates this screen for the



AddressBook business object.

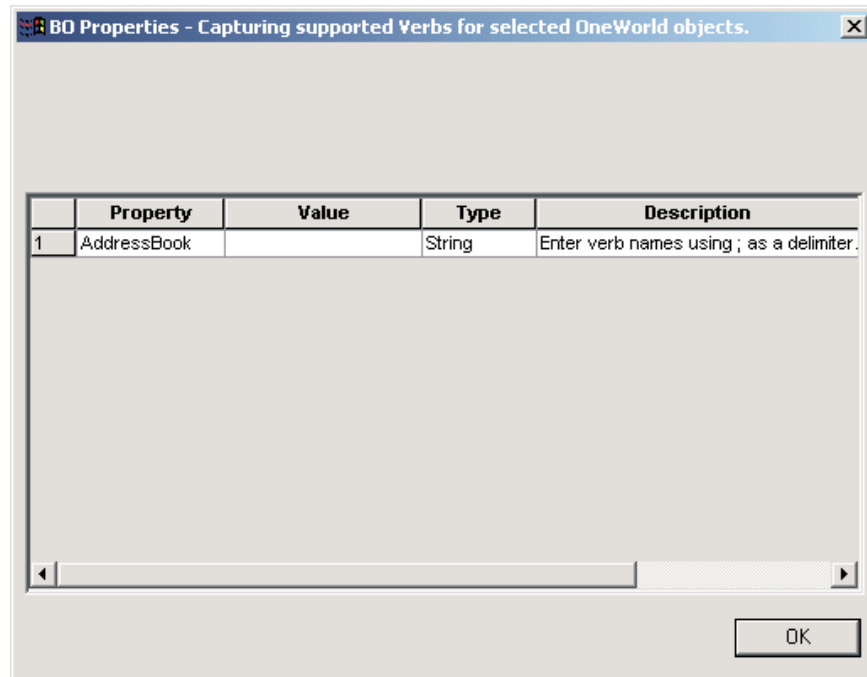


Figure 6. Select verb for component screen

On this screen you specify the verbs that the business objects supports. You can specify the verbs that you need for a specific business object by typing the verb names and delimiting them with a ;. The verb names must follow the naming convention as specified in the *Business Object Development Guide*.

The standard verbs used in WebSphere Business Integration are Create, Retrieve, Delete, and Update. For details about business object verb ASI for the OneWorld connector, see "Verb ASI" on page 31

#### Specifying the verb ASI:

For each verb selected, a separate window appears where you specify the business function sequence that must be executed for the verb.

Figure 7 on page 24 illustrates this screen for the Retrieve verb of the AddressBook business object created in Figure 4 on page 21 and Figure 5 on page 22.

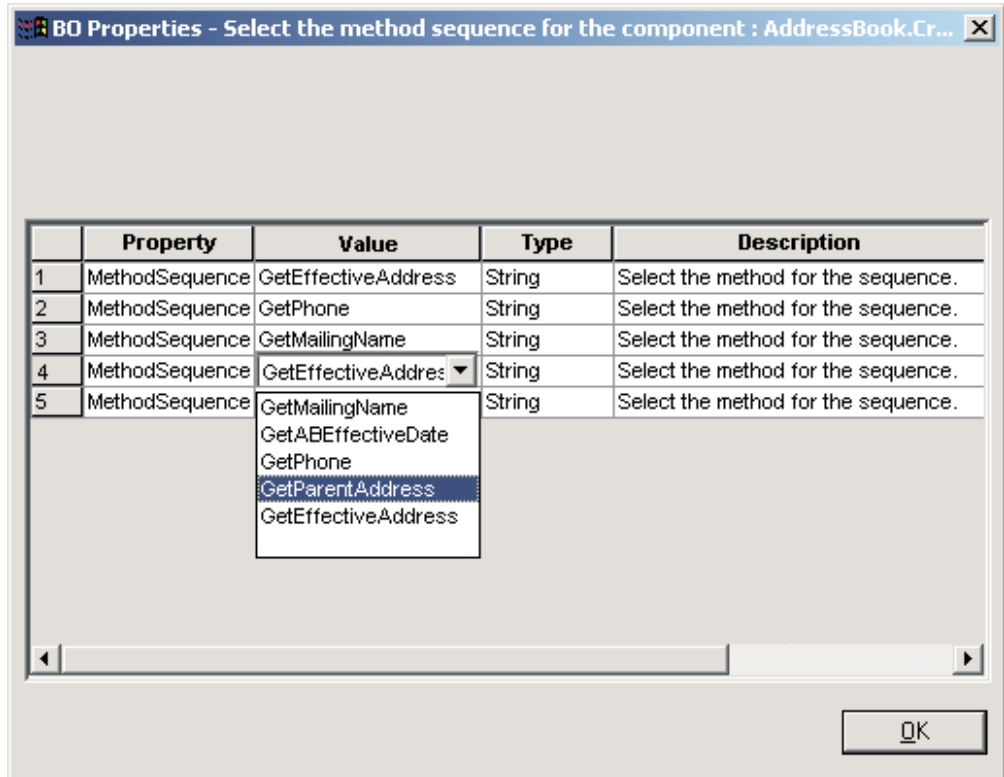


Figure 7. Setting the verb method sequence

1. In the **Value** list for the MethodSequence property, click the method that you want the business object to execute first for the verb. In Figure 7, the method sequence is as follows:
  - The first method that will be executed in the sequence of methods for the Retrieve verb is GetEffectiveAddress.
  - The second method in the sequence is GetPhone.
  - The third method in the sequence is GetMailingName.

By specifying a business function sequence for the verb, you are creating the verb ASI that is associated with that verb. If necessary, this verb ASI can be modified later.

2. Click **OK**.

**Open the business object in a separate window:**

The *Business Object Wizard - Step 6 of 6 - Save business objects* screen appears with options to save a copy of the business objects to another file, to open the new business objects in another window, and to shut down the OneWorld ODA. If you choose to open the new business objects in another window, the Business Object Designer displays a window where you can modify the attributes for those business objects.

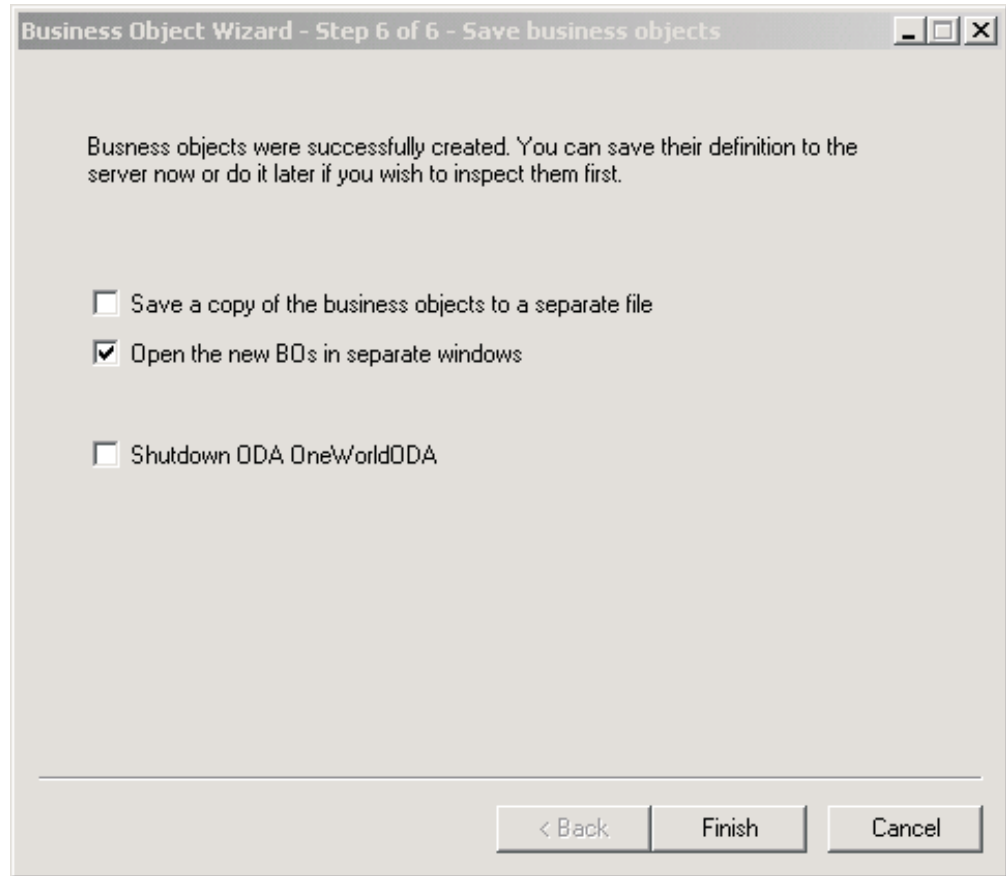


Figure 8. Save business objects screen

You must open the business object in a separate window within Business Object Designer. After specifying a key for the top-level business object, save the generated business object definitions to a file.

To open the business objects in separate windows:

1. Select **Open the new BOs in separate windows**. A dialog box appears.
2. Click **Finish**. Each business object appears in a separate window where you can view and set the ASI information for the business objects and business object verbs you just created. For details, see “Specifying business object information” on page 22.

To save the business objects to a file (only after you have specified a key for the parent-level business object):

1. Select **Save a copy of the business objects to a separate file**. A dialog box appears.
2. Type the location in which you want the copy of the new business object definitions to be saved.

Business Object Designer saves the files to the specified location.

If you have finished working with the ODA, you can shut it down by checking “Shutdown ODA JD Edwards OneWorld ODA” before clicking **Finish**.

---

## Uploading business object files

The newly created business object definition files must be uploaded to the integration broker once they have been created. The process depends on whether you are running WebSphere InterChange Server, WebSphere MQ Integrator Broker, or WebSphere Application Server.

- **WebSphere InterChange Server:** If you have saved your business object definition files to a local machine and need to upload them to the repository on the server, refer to the *Implementation Guide for WebSphere InterChange Server*.
- **WebSphere MQ Integrator Broker:** You must export the business object definitions out of Business Object Designer and into the integration broker. For details, refer to *Implementing Adapters with WebSphere MQ Integrator Broker*
- **WebSphere Application Server:** For details, see *Implementing Adapters with WebSphere Application Server*

---

## Chapter 5. Understanding business objects

This chapter describes the structure of business objects, how the adapter processes the business objects, and the assumptions the adapter makes about them.

The chapter contains the following sections:

- “Defining metadata”
- “Connector business object structure”
- “Sample business object properties” on page 32
- “Generating business objects” on page 35

---

### Defining metadata

The connector for JD Edwards OneWorld is metadata-driven. In the WebSphere business integration system, metadata is defined as application-specific information that describes a OneWorld application object’s data structures. The metadata is used to construct business object definitions that the connector uses at runtime to build business objects.

After installing the connector, but before you can run it, you must create the business objects definitions. The business objects that the connector processes can have any name allowed by the integration broker. For information about naming conventions, see the *Naming Components Guide*.

A metadata-driven connector handles each business object that it supports according to the metadata encoded in the business object definition. This enables the connector to handle new or modified business object definitions without requiring modifications to the code. New objects are created in Business Object Designer, with or without the assistance of the ODA. To modify an existing object, use Business Object Designer directly (the ODA cannot be used to modify an existing business object).

Application-specific metadata includes the structure of the business object and the settings of its attribute properties. Actual data values for each business object are conveyed in message objects at run time.

The connector makes assumptions about the structure of its supported business objects, the relationships between parent and child business objects, and the format of the data. Therefore, it is important that the structure of the business object exactly mirror the structure defined for the corresponding JD Edwards OneWorld object or the adapter will not be able to process business objects correctly.

If you need to make changes to the business object structure, make them to the corresponding object in OneWorld and then run GenJava to create .jar files that can be used as an input into the ODA.

For more information on modifying business object definitions, see *WebSphere Business Integration Adapters Business Object Development Guide*.

---

### Connector business object structure

Each OneWorld object has a corresponding business object.

The business objects for the JD Edwards OneWorld adapter can be of two types to support the Java APIs as well as the XMLList APIs from OneWorld. The current release of the adapter does not support XMLList business objects.

The business objects that are processed using Java APIs have a `type=BFN` tag in the business object ASI that distinguishes them from XMLList business objects. Within the business objects that are used for Java APIs, there are two types of business objects that map to the Interface class and business objects that map to a business function class. The business objects that map to the Interface class have ASI as follows:

```
type=BFN;class_name=com.JD Edwards.interop.AddressBook.JDEAddressBook
```

All the business functions present in the class `JDEAddressBook` and present in the `.jar` file generated by GenJava are represented as child business objects to the main business object. All the child business objects for a top-level business object must map to business functions that can be accessed through one username and password. If a specific business function has a different username/password access, then that must be part of a separate business object hierarchy that has access to that username/password. Refer to “Business functions” on page 29 for further details on how to define special access permissions for a business object.

Each data structure class present in the `.jar` file, generated from GenJava, maps to the corresponding business object. For example, in the `JDEAddressBook` example, the data structure names are:

```
D0100031  
D0100019  
D0100032  
D0100002  
D0100033
```

And, they map to Interface business objects and child business objects created for `B0100031`, `B0100019`, etc.

The ASI for the above business objects has a tag for `name=` where the value is the name of the data structure. It also has a tag, `bfname=`, for the name of the business function that corresponds to these business objects.

The name of the attribute maps to the name of the method that is represented by the business object. For example, if the data structure is `D0100033`, the name of the attribute in the `AddressBook` business object would be `GetEffectiveAddress`. The ASI at this attribute level would give the name of the method using the ASI tag `bfname=`.

## Attributes

For each attribute present in the Data Structure class, a corresponding business object attribute is generated in the business function business object. The ASI for the attribute holds information about its type and name in OneWorld. For example, if the attribute type is `JDEDate`, then the ASI holds “`name=EffectiveDate;type=JDEDate`”. Besides some simple types of attributes, OneWorld supports two proprietary data types, `JDEDate` and `JDEMathNumeric`.

### JDEDate

The following methods are available in this OneWorld Java class:

- `JDEDate()` — constructor
- `GetDay()` — returns the day of the date

- `GetMonth()` — returns the month of the date.
- `GetYear()` — returns the year of the date.
- `SetDay(short)` — set the day of the date
- `SetMonth(short)` — set the month of the date
- `SetYear(short)` — set the year of the date

The values for attributes that map to OneWorld date fields are specified in the format MM/DD/YYYY. The adapter parses this string value and calls OneWorld APIs on the `JDEDate` object to set values for the day, month, and year. If the data from OneWorld has to be set in the business object, it uses the get methods to set value in the attribute.

### JDEMathNumeric

The following methods are present in the `JDEMathNumeric` class:

- `GetValue()` — returns the value as a `String`, for example, `12345.6789`
- `SetValue()` — sets the value from a `String`, for example `12345.6789"`

### Business object attribute types

The following table lists the data types supported by OneWorld and the corresponding type in a WebSphere Business Integration business object.

*Table 5. Business object attribute types*

OneWorld type	Business object attribute type	ASI
<code>JDEDate</code>	<code>Date</code>	<code>type=JDEDate</code>
<code>JDEMathNumeric</code>	<code>Integer</code>	<code>type=JDEMathNumeric</code>
<code>int</code>	<code>Integer</code>	<code>type=int</code>
<code>boolean</code>	<code>Boolean</code>	<code>type=boolean</code>
<code>char</code>	<code>String</code>	<code>type=char</code>
<code>String</code>	<code>String</code>	<code>type=String</code>
<code>short</code>	<code>Integer</code>	<code>type_short</code>
<code>float</code>	<code>Float</code>	<code>type=float</code>
<code>double</code>	<code>Double</code>	<code>type=double</code>
<code>byte</code>	<code>String</code>	<code>type=byte</code>
<code>long</code>	<code>Integer</code>	<code>type=long</code>

## Business functions

The OneWorld connector invokes all of the business functions in one `doVerbFor()` call in one transaction. If one of them fails, all of them will be rolled back. All the business functions within one business object execution must have access permissions from a single user. The user can be one that is created for the adapter and is maintained as a connection pool or it can be a specific user. You can specify a user for a business object by using a child business object of single cardinality with the type `ACCESS_LEVEL`.

For proper representation of business function calls, the business function is modeled as a child business object containing attributes that represent data structure variables.

The adapter supports the business objects that map to business functions to be executed independently. For all such business objects, the ASI contains the information required to execute the business function, for example, business function name, and the name for the data structure. The ASI for a business function business object, as above, can be represented as follows:

```
bfname=getEffectiveAddress
type=BFN
name=com.JD Edwards.interop.D0100031
```

## Custom business functions

The following custom business functions are included and required for implementation of event notification in the adapter:

- Retrieve\_WBIAEvents — The name of the business function that retrieves the records from the IBM events table.
- Update\_WBIAEvents — The name of the business function that updates the records from the IBM events table.
- Delete\_WBIAEvents — The name of the business function that deletes the records from the IBM events table.
- Archive\_WBIAEvents — The name of the business function that archives the records from the IBM events table to the archive table.
- Recover\_WBIAEvents — The name of the business function that retrieves the IN\_PROGRESS events and changes the status to READY\_FOR\_POLL.

## Events business object structure

The following table details the event notification features supported by the connector.

Table 6. Event table structure

Columns	Description
OBJ_KEY	The unique identifier that identifies the business object row for which the event was created. If there are multiple attributes in a business object that make a key then the values are name value pairs delimited by “;”  If the business object is of type business function, then the object key should be as follows: DS0013keyattr1=123; DS0013keyattr2=124. If the verb ASI for the retrieve verb specifies multiple business functions, you might need to set multiple key fields. That is supported since the adapter is using the data structure name along with the attribute name, for example, D0013.attr1=123;D0012.attr1=345.
OBJ_NAME	OneWorld business object for which the event was detected.
OBJ_VERB	Verb for the event.
EVT_PRIORITY	Event priority.
EVT_STATUS	Event status. Initially set to READY_FOR_POLL.
EVT_DESC	Any comment associated with the event.
EVENT_ID	Unique ID of the event row.
ADAPTER_ID	Identifies the connection in a multiple connector configuration.
EVT_TIME	Event creation timestamp.



## Application-specific information

Application-specific information provides the connector with application-dependent instructions on how to process business objects. If you extend or modify a business object definition, you must make sure that the application-specific information in the definition matches the syntax that the connector expects.

Application-specific information can be specified for the overall business object as well as for each business object attribute.

### Business object-level ASI

Object-level ASI provides fundamental information about the nature of a business object and the objects it contains. Business object ASI is in name-value pairs. Business objects that represent interface objects recognize the following ASI names:

- `type=BFN` if the adapter invokes a business function.
- `class_name=com.JD Edwards.interop.AddressBook`, which is the name of the interface class.

Business objects map to business functions that are executed individually. For business objects that represent business functions, the adapter recognizes the following names:

- `type=BFN` if the adapter invokes a business function
- `bfname=getEffectiveAddress`
- `name=com.JD Edwards.interop.D0100031`, which is the name of the structure class.

### Verb ASI

For business objects that map to the Interface class, the Verb ASI contains a sequence of attribute names that map to business functions for the OneWorld BO Handler to call. The adapter invokes business functions in the sequence specified by the Verb ASI.

For business objects that map to business functions, the Verb ASI is blank.

### Attribute-level ASI

The business objects that map to business functions have attributes that map to the `get<Attr>/set<Attr>` method combinations of the data structure class. The connector takes this data structure object as an input parameter when the function is invoked. For all such attributes, ASI stores the type of the attribute as `type=<type>` and the actual name of the attribute as `name=<name>`. The adapter generates only one attribute for a combination of `get/set`. For example, if an attribute name is `ID`, the methods would be `getID()` and `setID()`. The business object would have one attribute with name `ID` and ASI as `getter=getID();setter=setID(), type=int, name=ID`.

Table 7 describes the ASI for non-method attributes.

Table 7. Attribute-level ASI for non-method attributes

Attribute	Description
Name	Specifies the business object field name
Type	Specifies the business object field type
MaxLength	255 characters, by default
IsKey	Set to false.

Table 7. Attribute-level ASI for non-method attributes (continued)

Attribute	Description
IsForeignKey	Set to false.
IsRequired	Set to false. Set to true if the field is mandatory.
AppSpecificInfo	This attribute is formatted as follows: name=; type=; use_attribute_value=busobj.attrname(optional); getter=; setter=;
DefaultValue	None

Table 8 describes the ASI for non-method attributes.

Table 8. Attribute-level ASI for method attributes

Attribute	Description
Name	Specifies the business object field name
Type	Specifies the business object field type
Relationship	If the child is a container attribute, this is set to Container.
IsKey	Set to false.
IsForeignKey	Set to false.
IsRequired	Set to false.
AppSpecificInfo	None
Cardinality	1

---

## Sample business object properties

This section provides an example of a WebSphere business integration business object. The corresponding OneWorld class and Java class are also provided to illustrate the mapping across the three constructs. Note that business objects inherit their names from the matching OneWorld application objects.

The samples provided in this section are as follows:

- “Sample GenJava script file”
- “Business object structure for the above example” on page 34

### Sample GenJava script file

OneWorld provides a utility, GenJava, that generates Java wrappers for the business functions running as part of the OneWorld server. GenJava requires a script file, written using iJDEScript. The following example uses the script file, AddressBook.cmd. AddressBook.cmd specifies the library and the interface to which the set of business functions is modularized.

Once GenJava is executed, it creates Java class files for all the interface classes and associated data structures. GenJava compiles the generated Java files, generates Java docs, and packages them into two .jar files, one for Java classes and one for Java doc. The below sample renders AddressBookInterop.jar and AddressBookInteropDoc.jar files.

To execute the following sample, type the following from the command line:  
GenJava /UserID JDE /Password JDE /Environment JDETest /cmd AddressBook.cmd

There are options available for running GenJava. GenJava is present in the <INSTALL>\system\bin32 folder.

Please refer to the section on Running GenJava in the Interoperability Guide, provided by OneWorld. The sample GenJava script file is shown below:

```
# This example creates a library whose name is derived from an input parameter  
# (library) if one is specified. A default value is used otherwise.
```

```
define library JDEAddressBook  
login  
library JDEAddressBook  
  interface AddressBook  
    import B0100031  
    import B0100019  
    import B0100032  
    import B0100002  
    import B0100033  
build  
logout
```

While preparing this script, consider the mapping of the Interface class to a business object in WebSphere Business Integration Adapter and relate the business functions as method sequences that are required for performing the intended actions for a verb. For example, if a business object is a SalesOrder business object, then the interface SalesOrder in the script file must include all the business functions that it needs to perform actions on the SalesOrder object through WebSphere Business Integration Adapter. The sequence of method execution for each verb is accomplished by populating the verb ASI for the business object. You must be able to do this in the business object generation process using the ODA. You can also edit the verb ASI using Business Object Designer after the business objects have been generated.

## Business object structure for the above example

The following figure shows the business object structure for the above example in Business Object Designer.

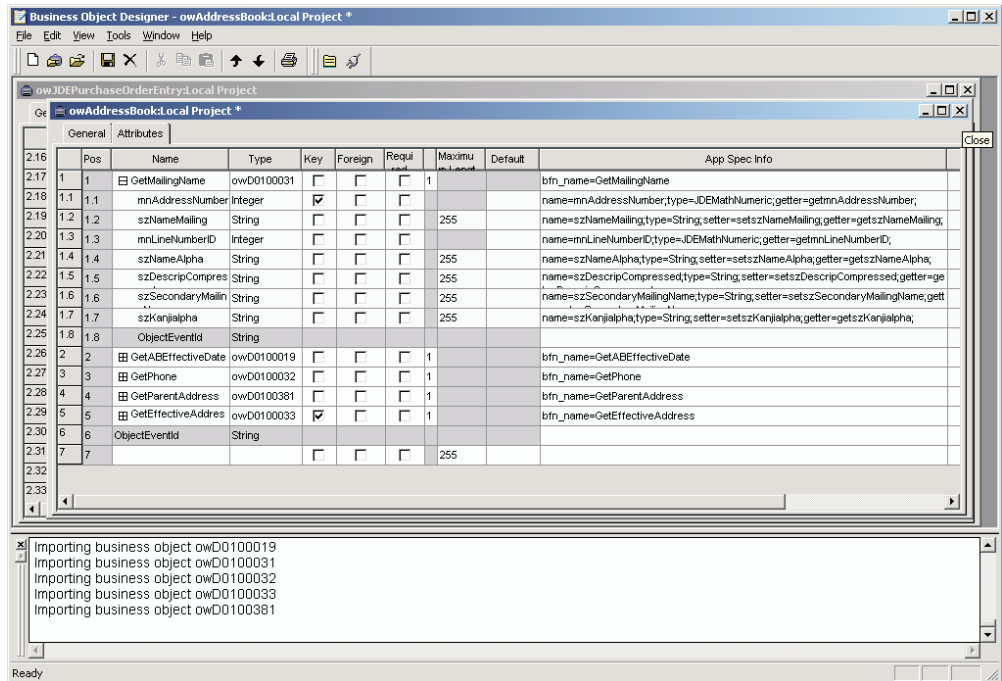


Figure 9. Business object structure for the AddressBook example

This section explains the business object structure for the AddressBook example, in the following sections:

### AddressBook

Name AddressBook

ASI (type=BFN; class\_name=com.JD Edwards.interop.AddressBook)

#### Attributes

The AddressBook business object includes the following objects:

- GetMailingName (Object)
- GetABEffectiveDate (Object)
- GetPhone (Object)
- GetParentAddress (Object)
- GetEffectiveAddress (Object)

#### Verb ASI

The Verb ASI uses the following Retrieve and RetrieveDetails objects:

- Retrieve — GetEffectiveAddress
- RetrieveDetails — GetPhone; GetMailingName

## D0100033

```
Name D0100033
ASI (type=BFN;
class_name=com.JD Edwards.interop.jdeaddressbook.D0100033;
bfn_name=GetEffectiveAddress)
```

### Attributes

The D0100033 business object includes the following objects:

- mnAddressNumber (Integer)  
(ASI) type = JDEMathNumeric; name = m\_mnAddressNumber;  
use\_attribute\_value=;getter=getmnAddressNumber;setter=;
- jdDateBeginningEffective (Date)  
(ASI) type = JDEDate; name = m\_mnAddressNumber;  
use\_attribute\_value=;getter=getjdDateBeginningEffective;  
setter=setjdDateBeginningEffective;

### Verb ASI

None.

---

## Generating business objects

Each time an event occurs during run time, a OneWorld application sends a message object containing object-level data and information about the type of transaction. The connector maps this data to the corresponding business object definition, to create an application-specific business object. The connector sends these business objects on to the integration broker for processing. It also receives business objects back from the integration broker, which it passes back to the OneWorld application.

**Note:** If the object model in the OneWorld application is changed, use the ODA to create a new definition. If the business object definitions in the integration broker repository do not exactly match the data that the OneWorld application sends, the connector is not able to create a business object and the transaction fails.

Business Object Designer provides a graphical interface that enables you to create and modify business object definitions for use at run time. For details, see Chapter 4, “Creating and modifying business objects,” on page 17.



---

## Chapter 6. Error handling

This chapter describes how the adapter for JD Edwards OneWorld handles errors. The adapter generates logging and tracing messages. This chapter describes these messages. The chapter contains the following sections:

- “Error handling”
- “Logging”
- “Tracing” on page 38

---

### Error handling

This section describes error handling for the OneWorld adapter and the OneWorld ODA.

#### Adapter

All messages generated by the connector are stored in a message file. Each message has a message number followed by the message:

```
Message number  
Message text
```

The connector handles additional specific errors as described in the following sections.

#### ODA

The OneWorld ODA throws an exception in the following scenarios:

- If the path specified for the .jar file does not exist or cannot be accessed
- If the .jar file is corrupt or cannot be accessed
- If the .jar file is empty

ODK properties define the trace file name and trace level. The ODK wizard manages these two properties. The trace file can be found in the OneWorld folder of the Crossworlds/ODA folder. The default name of the file is `OneWorldODATrace.txt`. The message file containing the error and trace messages has the following naming convention:

```
BIA_<ODAAgentName>Agent.txt
```

`ODAAgentName` is the value from the variable of the same name found in the start file for the ODA. If you change the value of the `ODAAgentName` variable, then you must also change the message file name. The error and trace message file is in the ODA messages folder.

See *Tracing Exceptions and Messages* in the *Business Object Development Guide* for more information on the trace file and the message file.

---

### Logging

All messages are read from the message files `BIA_<ODAAgentName>Agent.txt` for the ODA and `BIA_OneWorldAdapter.txt` for the adapter.

## Tracing

Tracing is an optional debugging feature you can turn on to closely follow connector behavior. Trace messages, by default, are written to STDOUT. For more on configuring trace messages, see the connector configuration properties in “Configuring the connector” on page 13. For more information on tracing, including how to enable and set it, see the *Connector Development Guide*.

Table 9 lists the recommended content for connector tracing message levels.

Table 9. Tracing messages content

Level	Description
Level 0	This level is used for trace messages that identify the connector version. No other tracing is performed at this level.
Level 1	Use this level for trace messages that: <ul style="list-style-type: none"><li>• Provide status information.</li><li>• Provide key information on each business object processed.</li><li>• Record each time a polling thread detects a new message in an input queue.</li></ul>
Level 2	Use this level for trace messages that: <ul style="list-style-type: none"><li>• Identify the BO handler used for each object that the connector processes.</li><li>• Log each time a business object is posted to the integration broker.</li><li>• Indicate each time a request business object is received.</li></ul>
Level 3	Use this level for trace messages that: <ul style="list-style-type: none"><li>• Identify the sub-objects being processed, if applicable. These messages appear when the connector has encountered a foreign key in a business object or when the connector sets a foreign key in a business object.</li><li>• Relate to business object processing. Examples of this include finding a match between business objects, or finding a business object in an array of child business objects.</li></ul>
Level 4	Use this level for trace messages that: <ul style="list-style-type: none"><li>• Identify application-specific information. Examples of this include the values returned by the methods that process the application-specific information fields in business objects.</li><li>• Identify when the connector enters or exits a function. These messages help trace the process flow of the connector.</li><li>• Record any thread-specific processing. For example, if the connector spawns multiple threads, a message logs the creation of each new thread.</li></ul>
Level 5	Use this level for trace messages that: <ul style="list-style-type: none"><li>• Indicate connector initialization. This type of message can include, for example, the value of each connector configurator property that has been retrieved from the broker.</li><li>• Detail the status of each thread that the connector spawns while it is running.</li><li>• Represent statements executed in the application. The connector log file contains all statements executed in the target application and the value of any variables that are substituted, where applicable.</li><li>• Record business object dumps. The connector should output a text representation of a business object before it begins processing (showing the object that the connector receives from the collaboration) as well as after it finishes processing the object (showing the object that the connector returns to the collaboration).</li></ul>



---

## Appendix A. Standard configuration properties for connectors

This appendix describes the standard configuration properties for the connector component of WebSphere Business Integration adapters. The information covers connectors running on the following integration brokers:

- WebSphere InterChange Server (ICS)
- WebSphere MQ Integrator, WebSphere MQ Integrator Broker, and WebSphere Business Integration Message Broker, collectively referred to as the WebSphere Message Brokers (WMQI).
- WebSphere Application Server (WAS)

Not every connector makes use of all these standard properties. When you select an integration broker from Connector Configurator, you will see a list of the standard properties that you need to configure for your adapter running with that broker.

For information about properties specific to the connector, see the relevant adapter user guide.

**Note:** In this document, backslashes (\) are used as the convention for directory paths. For UNIX installations, substitute slashes (/) for backslashes and follow the conventions for each operating system.

---

### New and deleted properties

These standard properties have been added in this release.

#### New properties

- XMLNamespaceFormat

#### Deleted properties

- RestartCount

---

### Configuring standard connector properties

Adapter connectors have two types of configuration properties:

- Standard configuration properties
- Connector-specific configuration properties

This section describes the standard configuration properties. For information on configuration properties specific to a connector, see its adapter user guide.

### Using Connector Configurator

You configure connector properties from Connector Configurator, which you access from System Manager. For more information on using Connector Configurator, refer to the Connector Configurator appendix.

**Note:** Connector Configurator and System Manager run only on the Windows system. If you are running the connector on a UNIX system, you must have a Windows machine with these tools installed. To set connector properties

for a connector that runs on UNIX, you must start up System Manager on the Windows machine, connect to the UNIX integration broker, and bring up Connector Configurator for the connector.

## Setting and updating property values

The default length of a property field is 255 characters.

The connector uses the following order to determine a property's value (where the highest number overrides other values):

1. Default
2. Repository (only if WebSphere InterChange Server is the integration broker)
3. Local configuration file
4. Command line

A connector obtains its configuration values at startup. If you change the value of one or more connector properties during a run-time session, the property's **Update Method** determines how the change takes effect. There are four different update methods for standard connector properties:

- **Dynamic**  
The change takes effect immediately after it is saved in System Manager. If the connector is working in stand-alone mode (independently of System Manager), for example with one of the WebSphere message brokers, you can only change properties through the configuration file. In this case, a dynamic update is not possible.
- **Component restart**  
The change takes effect only after the connector is stopped and then restarted in System Manager. You do not need to stop and restart the application-specific component or the integration broker.
- **Server restart**  
The change takes effect only after you stop and restart the application-specific component and the integration broker.
- **Agent restart (ICS only)**  
The change takes effect only after you stop and restart the application-specific component.

To determine how a specific property is updated, refer to the **Update Method** column in the Connector Configurator window, or see the Update Method column in the Property Summary table below.

---

## Summary of standard properties

Table 10 on page 41 provides a quick reference to the standard connector configuration properties. Not all the connectors make use of all these properties, and property settings may differ from integration broker to integration broker, as standard property dependencies are based on RepositoryDirectory.

You must set the values of some of these properties before running the connector. See the following section for an explanation of each property.

Table 10. Summary of standard configuration properties

Property name	Possible values	Default value	Update method	Notes
AdminInQueue	Valid JMS queue name	<i>CONNECTORNAME</i> /ADMININQUEUE	Component restart	Delivery Transport is JMS
AdminOutQueue	Valid JMS queue name	<i>CONNECTORNAME</i> /ADMINOUTQUEUE	Component restart	Delivery Transport is JMS
AgentConnections	1-4	1	Component restart	Delivery Transport is MQ or IDL: Repository directory is <REMOTE>
AgentTraceLevel	0-5	0	Dynamic	
ApplicationName	Application name	Value specified for the connector application name	Component restart	
BrokerType	ICS, WMQI, WAS			
CharacterEncoding	ascii7, ascii8, SJIS, Cp949, GBK, Big5, Cp297, Cp273, Cp280, Cp284, Cp037, Cp437 <b>Note:</b> This is a subset of supported values.	ascii7	Component restart	
ConcurrentEventTriggeredFlows	1 to 32,767	1	Component restart	Repository directory is <REMOTE>
ContainerManagedEvents	No value or JMS	No value	Component restart	Delivery Transport is JMS
ControllerStoreAndForwardMode	true or false	True	Dynamic	Repository directory is <REMOTE>
ControllerTraceLevel	0-5	0	Dynamic	Repository directory is <REMOTE>
DeliveryQueue		<i>CONNECTORNAME</i> /DELIVERYQUEUE	Component restart	JMS transport only
DeliveryTransport	MQ, IDL, or JMS	JMS	Component restart	If Repository directory is local, then value is JMS only
DuplicateEventElimination	True or False	False	Component restart	JMS transport only: Container Managed Events must be <NONE>
FaultQueue		<i>CONNECTORNAME</i> /FAULTQUEUE	Component restart	JMS transport only

Table 10. Summary of standard configuration properties (continued)

Property name	Possible values	Default value	Update method	Notes
jms.FactoryClassName	CxCommon.Messaging.jms.IBMMQSeriesFactory or CxCommon.Messaging.jms.SonicMQFactory or any Java class name	CxCommon.Messaging.jms.IBMMQSeriesFactory	Component restart	JMS transport only
jms.MessageBrokerName	If FactoryClassName is IBM, use crossworlds.queue.manager. If FactoryClassName is Sonic, use localhost:2506.	crossworlds.queue.manager	Component restart	JMS transport only
jms.NumConcurrentRequests	Positive integer	10	Component restart	JMS transport only
jms.Password	Any valid password		Component restart	JMS transport only
jms.UserName	Any valid name		Component restart	JMS transport only
JvmMaxHeapSize	Heap size in megabytes	128m	Component restart	Repository directory is <REMOTE>
JvmMaxNativeStackSize	Size of stack in kilobytes	128k	Component restart	Repository directory is <REMOTE>
JvmMinHeapSize	Heap size in megabytes	1m	Component restart	Repository directory is <REMOTE>
ListenerConcurrency	1- 100	1	Component restart	Delivery Transport must be MQ
Locale	en_US, ja_JP, ko_KR, zh_CN, zh_TW, fr_FR, de_DE, it_IT, es_ES, pt_BR <b>Note:</b> This is a subset of the supported locales.	en_US	Component restart	
LogAtInterchangeEnd	True or False	False	Component restart	Repository Directory must be <REMOTE>
MaxEventCapacity	1-2147483647	2147483647	Dynamic	Repository Directory must be <REMOTE>
MessageFileName	Path or filename	InterchangeSystem.txt	Component restart	
MonitorQueue	Any valid queue name	CONNECTORNAME/MONITORQUEUE	Component restart	JMS transport only: DuplicateEvent Elimination must be True
OADAutoRestartAgent	True or False	False	Dynamic	Repository Directory must be <REMOTE>

Table 10. Summary of standard configuration properties (continued)

Property name	Possible values	Default value	Update method	Notes
OADMaxNumRetry	A positive number	1000	Dynamic	Repository Directory must be <REMOTE>
OADRetryTimeInterval	A positive number in minutes	10	Dynamic	Repository Directory must be <REMOTE>
PollEndTime	HH:MM	HH:MM	Component restart	
PollFrequency	A positive integer in milliseconds  no (to disable polling)  key (to poll only when the letter p is entered in the connector's Command Prompt window)	10000	Dynamic	
PollQuantity	1-500	1	Agent restart	JMS transport only: Container Managed Events is specified
PollStartTime	HH:MM(HH is 0-23, MM is 0-59)	HH:MM	Component restart	
RepositoryDirectory	Location of metadata repository		Agent restart	For ICS: set to <REMOTE> For WebSphere MQ message brokers and WAS: set to C:\crossworlds\repository
RequestQueue	Valid JMS queue name	CONNECTORNAME/REQUESTQUEUE	Component restart	Delivery Transport is JMS
ResponseQueue	Valid JMS queue name	CONNECTORNAME/RESPONSEQUEUE	Component restart	Delivery Transport is JMS: required only if Repository directory is <REMOTE>
RestartRetryCount	0-99	3	Dynamic	
RestartRetryInterval	A sensible positive value in minutes: 1 - 2147483547	1	Dynamic	
RHF2MessageDomain	mrm, xml	mrm	Component restart	Only if Delivery Transport is JMS and WireFormat is CwXML.

Table 10. Summary of standard configuration properties (continued)

Property name	Possible values	Default value	Update method	Notes
SourceQueue	Valid WebSphere MQ name	CONNECTORNAME/SOURCEQUEUE	Agent restart	Only if Delivery Transport is JMS and Container Managed Events is specified
SynchronousRequestQueue		CONNECTORNAME/SYNCHRONOUSREQUESTQUEUE	Component restart	Delivery Transport is JMS
SynchronousRequestTimeout	0 - any number (milliseconds)	0	Component restart	Delivery Transport is JMS
SynchronousResponseQueue		CONNECTORNAME/SYNCHRONOUSRESPONSEQUEUE	Component restart	Delivery Transport is JMS
WireFormat	CwXML, CwBO	CwXML	Agent restart	CwXML if Repository Directory is not <REMOTE>; CwBO if Repository Directory is <REMOTE>
WsifSynchronousRequest Timeout	0 - any number (milliseconds)	0	Component restart	WAS only
XMLNamespaceFormat	short, long	short	Agent restart	WebSphere MQ message brokers and WAS only

## Standard configuration properties

This section lists and defines each of the standard connector configuration properties.

### AdminInQueue

The queue that is used by the integration broker to send administrative messages to the connector.

The default value is CONNECTORNAME/ADMININQUEUE.

### AdminOutQueue

The queue that is used by the connector to send administrative messages to the integration broker.

The default value is CONNECTORNAME/ADMINOUTQUEUE.

### AgentConnections

Applicable only if RepositoryDirectory is <REMOTE>.

The AgentConnections property controls the number of ORB connections opened by `orb.init[]`.

By default, the value of this property is set to 1. There is no need to change this default.

## AgentTraceLevel

Level of trace messages for the application-specific component. The default is 0. The connector delivers all trace messages applicable at the tracing level set or lower.

## ApplicationName

Name that uniquely identifies the connector's application. This name is used by the system administrator to monitor the WebSphere business integration system environment. This property must have a value before you can run the connector.

## BrokerType

Identifies the integration broker type that you are using. The options are ICS, WebSphere message brokers (WMQI, WMQIB or WBIMB) or WAS.

## CharacterEncoding

Specifies the character code set used to map from a character (such as a letter of the alphabet, a numeric representation, or a punctuation mark) to a numeric value.

**Note:** Java-based connectors do not use this property. A C++ connector currently uses the value `asci i7` for this property.

By default, a subset of supported character encodings only is displayed in the drop list. To add other supported values to the drop list, you must manually modify the `\Data\Std\stdConnProps.xml` file in the product directory. For more information, see the appendix on Connector Configurator.

## ConcurrentEventTriggeredFlows

Applicable only if `RepositoryDirectory` is `<REMOTE>`.

Determines how many business objects can be concurrently processed by the connector for event delivery. Set the value of this attribute to the number of business objects you want concurrently mapped and delivered. For example, set the value of this property to 5 to cause five business objects to be concurrently processed. The default value is 1.

Setting this property to a value greater than 1 allows a connector for a source application to map multiple event business objects at the same time and deliver them to multiple collaboration instances simultaneously. This speeds delivery of business objects to the integration broker, particularly if the business objects use complex maps. Increasing the arrival rate of business objects to collaborations can improve overall performance in the system.

To implement concurrent processing for an entire flow (from a source application to a destination application), you must:

- Configure the collaboration to use multiple threads by setting its `Maximum number of concurrent events` property high enough to use multiple threads.
- Ensure that the destination application's application-specific component can process requests concurrently. That is, it must be multi-threaded, or be able to use connector agent parallelism and be configured for multiple processes. Set the `Parallel Process Degree` configuration property to a value greater than 1.

The `ConcurrentEventTriggeredFlows` property has no effect on connector polling, which is single-threaded and performed serially.

## ContainerManagedEvents

This property allows a JMS-enabled connector with a JMS event store to provide guaranteed event delivery, in which an event is removed from the source queue and placed on the destination queue as a single JMS transaction.

The default value is `No`.

When `ContainerManagedEvents` is set to `JMS`, you must configure the following properties to enable guaranteed event delivery:

- `PollQuantity` = 1 to 500
- `SourceQueue` = `CONNECTORNAME/SOURCEQUEUE`

You must also configure a data handler with the `MimeType`, `DHClass`, and `DataHandlerConfigMOName` (optional) properties. To set those values, use the **Data Handler** tab in Connector Configurator. The fields for the values under the Data Handler tab will be displayed only if you have set `ContainerManagedEvents` to `JMS`.

**Note:** When `ContainerManagedEvents` is set to `JMS`, the connector does *not* call its `pollForEvents()` method, thereby disabling that method's functionality.

This property only appears if the `DeliveryTransport` property is set to the value `JMS`.

## ControllerStoreAndForwardMode

Applicable only if `RepositoryDirectory` is `<REMOTE>`.

Sets the behavior of the connector controller after it detects that the destination application-specific component is unavailable.

If this property is set to `true` and the destination application-specific component is unavailable when an event reaches ICS, the connector controller blocks the request to the application-specific component. When the application-specific component becomes operational, the controller forwards the request to it.

However, if the destination application's application-specific component becomes unavailable **after** the connector controller forwards a service call request to it, the connector controller fails the request.

If this property is set to `false`, the connector controller begins failing all service call requests as soon as it detects that the destination application-specific component is unavailable.

The default is `true`.

## ControllerTraceLevel

Applicable only if `RepositoryDirectory` is `<REMOTE>`.

Level of trace messages for the connector controller. The default is `0`.



## DeliveryQueue

Applicable only if DeliveryTransport is JMS.

The queue that is used by the connector to send business objects to the integration broker.

The default value is CONNECTORNAME/DELIVERYQUEUE.

## DeliveryTransport

Specifies the transport mechanism for the delivery of events. Possible values are MQ for WebSphere MQ, IDL for CORBA IIOP, or JMS for Java Messaging Service.

- If ICS is the broker type, the value of the DeliveryTransport property can be MQ, IDL, or JMS, and the default is IDL.
- If the RepositoryDirectory is a local directory, the value may only be JMS.

The connector sends service call requests and administrative messages over CORBA IIOP if the value configured for the DeliveryTransport property is MQ or IDL.

### WebSphere MQ and IDL

Use WebSphere MQ rather than IDL for event delivery transport, unless you must have only one product. WebSphere MQ offers the following advantages over IDL:

- Asynchronous communication:  
WebSphere MQ allows the application-specific component to poll and persistently store events even when the server is not available.
- Server side performance:  
WebSphere MQ provides faster performance on the server side. In optimized mode, WebSphere MQ stores only the pointer to an event in the repository database, while the actual event remains in the WebSphere MQ queue. This saves having to write potentially large events to the repository database.
- Agent side performance:  
WebSphere MQ provides faster performance on the application-specific component side. Using WebSphere MQ, the connector's polling thread picks up an event, places it in the connector's queue, then picks up the next event. This is faster than IDL, which requires the connector's polling thread to pick up an event, go over the network into the server process, store the event persistently in the repository database, then pick up the next event.

### JMS

Enables communication between the connector and client connector framework using Java Messaging Service (JMS).

If you select JMS as the delivery transport, additional JMS properties such as `jms.MessageBrokerName`, `jms.FactoryClassName`, `jms.Password`, and `jms.UserName`, appear in Connector Configurator. The first two of these properties are required for this transport.

**Important:** There may be a memory limitation if you use the JMS transport mechanism for a connector in the following environment:

- AIX 5.0
- WebSphere MQ 5.3.0.1
- When ICS is the integration broker

In this environment, you may experience difficulty starting both the connector controller (on the server side) and the connector (on the client side) due to memory use within the WebSphere MQ client. If your installation uses less than 768M of process heap size, IBM recommends that you set:

- The `LDR_CNTRL` environment variable in the `CWSharedEnv.sh` script.  
This script resides in the `\bin` directory below the product directory. With a text editor, add the following line as the first line in the `CWSharedEnv.sh` script:  

```
export LDR_CNTRL=MAXDATA=0x30000000
```

  
This line restricts heap memory usage to a maximum of 768 MB (3 segments \* 256 MB). If the process memory grows more than this limit, page swapping can occur, which can adversely affect the performance of your system.
- The `IPCCBaseAddress` property to a value of 11 or 12. For more information on this property, see the *System Installation Guide for UNIX*.

## DuplicateEventElimination

When you set this property to `true`, a JMS-enabled connector can ensure that duplicate events are not delivered to the delivery queue. To use this feature, the connector must have a unique event identifier set as the business object's `ObjectEventId` attribute in the application-specific code. This is done during connector development.

This property can also be set to `false`.

**Note:** When `DuplicateEventElimination` is set to `true`, you must also configure the `MonitorQueue` property to enable guaranteed event delivery.

## FaultQueue

If the connector experiences an error while processing a message then the connector moves the message to the queue specified in this property, along with a status indicator and a description of the problem.

The default value is `CONNECTORNAME/FAULTQUEUE`.

## JvmMaxHeapSize

The maximum heap size for the agent (in megabytes). This property is applicable only if the `RepositoryDirectory` value is `<REMOTE>`.

The default value is 128m.

## JvmMaxNativeStackSize

The maximum native stack size for the agent (in kilobytes). This property is applicable only if the `RepositoryDirectory` value is `<REMOTE>`.

The default value is 128k.

## JvmMinHeapSize

The minimum heap size for the agent (in megabytes). This property is applicable only if the `RepositoryDirectory` value is `<REMOTE>`.

The default value is 1m.

## **jms.FactoryClassName**

Specifies the class name to instantiate for a JMS provider. You *must* set this connector property when you choose JMS as your delivery transport mechanism (DeliveryTransport).

The default is `CxCommon.Messaging.jms.IBMMQSeriesFactory`.

## **jms.MessageBrokerName**

Specifies the broker name to use for the JMS provider. You *must* set this connector property when you choose JMS as your delivery transport mechanism (DeliveryTransport).

The default is `crossworlds.queue.manager`.

## **jms.NumConcurrentRequests**

Specifies the maximum number of concurrent service call requests that can be sent to a connector at the same time. Once that maximum is reached, new service calls block and wait for another request to complete before proceeding.

The default value is 10.

## **jms.Password**

Specifies the password for the JMS provider. A value for this property is optional.

There is no default.

## **jms.UserName**

Specifies the user name for the JMS provider. A value for this property is optional.

There is no default.

## **ListenerConcurrency**

This property supports multi-threading in MQ Listener when ICS is the integration broker. It enables batch writing of multiple events to the database, thus improving system performance. The default value is 1.

This property applies only to connectors using MQ transport. The `DeliveryTransport` property must be set to MQ.

## **Locale**

Specifies the language code, country or territory, and, optionally, the associated character code set. The value of this property determines such cultural conventions as collation and sort order of data, date and time formats, and the symbols used in monetary specifications.

A locale name has the following format:

*ll\_TT.codeset*

where:

*ll* a two-character language code (usually in lower case)

<i>TT</i>	a two-letter country or territory code (usually in upper case)
<i>codeset</i>	the name of the associated character code set; this portion of the name is often optional.

By default, only a subset of supported locales appears in the drop list. To add other supported values to the drop list, you must manually modify the `\Data\Std\stdConnProps.xml` file in the product directory. For more information, see the appendix on Connector Configurator.

The default value is `en_US`. If the connector has not been globalized, the only valid value for this property is `en_US`. To determine whether a specific connector has been globalized, see the connector version list on these websites:

<http://www.ibm.com/software/websphere/wbiadapters/infocenter>, or  
<http://www.ibm.com/websphere/integration/wicsserver/infocenter>

## LogAtInterchangeEnd

Applicable only if `RepositoryDirectory` is `<REMOTE>`.

Specifies whether to log errors to the integration broker's log destination. Logging to the broker's log destination also turns on e-mail notification, which generates e-mail messages for the `MESSAGE_RECIPIENT` specified in the `InterchangeSystem.cfg` file when errors or fatal errors occur.

For example, when a connector loses its connection to its application, if `LogAtInterChangeEnd` is set to `true`, an e-mail message is sent to the specified message recipient. The default is `false`.

## MaxEventCapacity

The maximum number of events in the controller buffer. This property is used by flow control and is applicable only if the value of the `RepositoryDirectory` property is `<REMOTE>`.

The value can be a positive integer between 1 and 2147483647. The default value is 2147483647.

## MessageFileName

The name of the connector message file. The standard location for the message file is `\connectors\messages`. Specify the message filename in an absolute path if the message file is not located in the standard location.

If a connector message file does not exist, the connector uses `InterchangeSystem.txt` as the message file. This file is located in the product directory.

**Note:** To determine whether a specific connector has its own message file, see the individual adapter user guide.

## MonitorQueue

The logical queue that the connector uses to monitor duplicate events. It is used only if the `DeliveryTransport` property value is `JMS` and `DuplicateEventElimination` is set to `TRUE`.

The default value is CONNECTORNAME/MONITORQUEUE

## **OADAutoRestartAgent**

Valid only when the RepositoryDirectory is <REMOTE>.

Specifies whether the connector uses the automatic and remote restart feature. This feature uses the MQ-triggered Object Activation Daemon (OAD) to restart the connector after an abnormal shutdown, or to start a remote connector from System Monitor.

This property must be set to true to enable the automatic and remote restart feature. For information on how to configure the MQ-triggered OAD feature, see the *Installation Guide for Windows or for UNIX*.

The default value is false.

## **OADMaxNumRetry**

Valid only when the RepositoryDirectory is <REMOTE>.

Specifies the maximum number of times that the MQ-triggered OAD automatically attempts to restart the connector after an abnormal shutdown. The OADAutoRestartAgent property must be set to true for this property to take effect.

The default value is 1000.

## **OADRetryTimeInterval**

Valid only when the RepositoryDirectory is <REMOTE>.

Specifies the number of minutes in the retry-time interval for the MQ-triggered OAD. If the connector agent does not restart within this retry-time interval, the connector controller asks the OAD to restart the connector agent again. The OAD repeats this retry process as many times as specified by the OADMaxNumRetry property. The OADAutoRestartAgent property must be set to true for this property to take effect.

The default is 10.

## **PollEndTime**

Time to stop polling the event queue. The format is HH:MM, where *HH* represents 0-23 hours, and *MM* represents 0-59 seconds.

You must provide a valid value for this property. The default value is HH:MM, but must be changed.

## **PollFrequency**

The amount of time between polling actions. Set PollFrequency to one of the following values:

- The number of milliseconds between polling actions.
- The word *key*, which causes the connector to poll only when you type the letter *p* in the connector's Command Prompt window. Enter the word in lowercase.
- The word *no*, which causes the connector not to poll. Enter the word in lowercase.

The default is 10000.

**Important:** Some connectors have restrictions on the use of this property. To determine whether a specific connector does, see the installing and configuring chapter of its adapter guide.

## PollQuantity

Designates the number of items from the application that the connector should poll for. If the adapter has a connector-specific property for setting the poll quantity, the value set in the connector-specific property will override the standard property value.

## PollStartTime

The time to start polling the event queue. The format is *HH:MM*, where *HH* represents 0-23 hours, and *MM* represents 0-59 seconds.

You must provide a valid value for this property. The default value is *HH:MM*, but must be changed.

## RequestQueue

The queue that is used by the integration broker to send business objects to the connector.

The default value is `CONNECTOR/REQUESTQUEUE`.

## RepositoryDirectory

The location of the repository from which the connector reads the XML schema documents that store the meta-data for business object definitions.

When the integration broker is ICS, this value must be set to `<REMOTE>` because the connector obtains this information from the InterChange Server repository.

When the integration broker is a WebSphere message broker or WAS, this value must be set to `<local directory>`.

## ResponseQueue

Applicable only if `DeliveryTransport` is JMS and required only if `RepositoryDirectory` is `<REMOTE>`.

Designates the JMS response queue, which delivers a response message from the connector framework to the integration broker. When the integration broker is ICS, the server sends the request and waits for a response message in the JMS response queue.

## RestartRetryCount

Specifies the number of times the connector attempts to restart itself. When used for a parallel connector, specifies the number of times the master connector application-specific component attempts to restart the slave connector application-specific component.

The default is 3.

## RestartRetryInterval

Specifies the interval in minutes at which the connector attempts to restart itself. When used for a parallel connector, specifies the interval at which the master connector application-specific component attempts to restart the slave connector application-specific component. Possible values ranges from 1 to 2147483647.

The default is 1.

## RHF2MessageDomain

WebSphere message brokers and WAS only.

This property allows you to configure the value of the field domain name in the JMS header. When data is sent to WMQI over JMS transport, the adapter framework writes JMS header information, with a domain name and a fixed value of `mrm`. A configurable domain name enables users to track how the WMQI broker processes the message data.

A sample header would look like this:

```
<mcd><Msd>mrm</Msd><Set>3</Set><Type>
Retek_POPhyDesc</Type><Fmt>CwXML</Fmt></mcd>
```

The default value is `mrm`, but it may also be set to `xml`. This property only appears when `DeliveryTransport` is set to `JMSand` and `WireFormat` is set to `CwXML`.

## SourceQueue

Applicable only if `DeliveryTransport` is `JMS` and `ContainerManagedEvents` is specified.

Designates the JMS source queue for the connector framework in support of guaranteed event delivery for JMS-enabled connectors that use a JMS event store. For further information, see “`ContainerManagedEvents`” on page 46.

The default value is `CONNECTOR/SOURCEQUEUE`.

## SynchronousRequestQueue

Applicable only if `DeliveryTransport` is `JMS`.

Delivers request messages that require a synchronous response from the connector framework to the broker. This queue is necessary only if the connector uses synchronous execution. With synchronous execution, the connector framework sends a message to the `SynchronousRequestQueue` and waits for a response back from the broker on the `SynchronousResponseQueue`. The response message sent to the connector bears a correlation ID that matches the ID of the original message.

The default is `CONNECTORNAME/SYNCHRONOUSREQUESTQUEUE`

## SynchronousResponseQueue

Applicable only if `DeliveryTransport` is `JMS`.

Delivers response messages sent in reply to a synchronous request from the broker to the connector framework. This queue is necessary only if the connector uses synchronous execution.

The default is CONNECTORNAME/SYNCHRONOUSRESPONSEQUEUE

## **SynchronousRequestTimeout**

Applicable only if DeliveryTransport is JMS.

Specifies the time in minutes that the connector waits for a response to a synchronous request. If the response is not received within the specified time, then the connector moves the original synchronous request message into the fault queue along with an error message.

The default value is 0.

## **WireFormat**

Message format on the transport.

- If the RepositoryDirectory is a local directory, the setting is CwXML.
- If the value of RepositoryDirectory is <REMOTE>, the setting is CwB0.

## **WsifSynchronousRequest Timeout**

WAS integration broker only.

Specifies the time in minutes that the connector waits for a response to a synchronous request. If the response is not received within the specified, time then the connector moves the original synchronous request message into the fault queue along with an error message.

The default value is 0.

## **XMLNameSpaceFormat**

WebSphere message brokers and WAS integration broker only.

A strong property that allows the user to specify short and long name spaces in the XML format of business object definitions.

The default value is short.



---

## Appendix B. Connector Configurator

This appendix describes how to use Connector Configurator to set configuration property values for your adapter.

You use Connector Configurator to:

- Create a connector-specific property template for configuring your connector
- Create a configuration file
- Set properties in a configuration file

**Note:**

In this document, backslashes (\) are used as the convention for directory paths. For UNIX installations, substitute slashes (/) for backslashes and follow the conventions for each operating system.

The topics covered in this appendix are:

- “Overview of Connector Configurator” on page 55
- “Starting Connector Configurator” on page 56
- “Creating a connector-specific property template” on page 57
- “Creating a new configuration file” on page 59
- “Setting the configuration file properties” on page 62
- “Using Connector Configurator in a globalized environment” on page 68

---

### Overview of Connector Configurator

Connector Configurator allows you to configure the connector component of your adapter for use with these integration brokers:

- WebSphere InterChange Server (ICS)
- WebSphere MQ Integrator, WebSphere MQ Integrator Broker, and WebSphere Business Integration Message Broker, collectively referred to as the WebSphere Message Brokers (WMQI)
- WebSphere Application Server (WAS)

You use Connector Configurator to:

- Create a **connector-specific property template** for configuring your connector.
- Create a **connector configuration file**; you must create one configuration file for each connector you install.
- Set properties in a configuration file.

You may need to modify the default values that are set for properties in the connector templates. You must also designate supported business object definitions and, with ICS, maps for use with collaborations as well as specify messaging, logging and tracing, and data handler parameters, as required.

The mode in which you run Connector Configurator, and the configuration file type you use, may differ according to which integration broker you are running. For example, if WMQI is your broker, you run Connector Configurator directly, and not from within System Manager (see “Running Configurator in stand-alone mode” on page 56).

Connector configuration properties include both standard configuration properties (the properties that all connectors have) and connector-specific properties (properties that are needed by the connector for a specific application or technology).

Because **standard properties** are used by all connectors, you do not need to define those properties from scratch; Connector Configurator incorporates them into your configuration file as soon as you create the file. However, you do need to set the value of each standard property in Connector Configurator.

The range of standard properties may not be the same for all brokers and all configurations. Some properties are available only if other properties are given a specific value. The Standard Properties window in Connector Configurator will show the properties available for your particular configuration.

For **connector-specific properties**, however, you need first to define the properties and then set their values. You do this by creating a connector-specific property template for your particular adapter. There may already be a template set up in your system, in which case, you simply use that. If not, follow the steps in “Creating a new template” on page 57 to set up a new one.

**Note:** Connector Configurator runs only in a Windows environment. If you are running the connector in a UNIX environment, use Connector Configurator in Windows to modify the configuration file and then copy the file to your UNIX environment.

---

## Starting Connector Configurator

You can start and run Connector Configurator in either of two modes:

- Independently, in stand-alone mode
- From System Manager

### Running Configurator in stand-alone mode

You can run Connector Configurator independently and work with connector configuration files, irrespective of your broker.

To do so:

- From **Start>Programs**, click **IBM WebSphere InterChange Server>IBM WebSphere Business Integration Toolset>Development>Connector Configurator**.
- Select **File>New>Configuration File**.
- When you click the pull-down menu next to **System Connectivity Integration Broker**, you can select ICS, WebSphere Message Brokers or WAS, depending on your broker.

You may choose to run Connector Configurator independently to generate the file, and then connect to System Manager to save it in a System Manager project (see “Completing a configuration file” on page 61.)

---

## Running Configurator from System Manager

You can run Connector Configurator from System Manager.

To run Connector Configurator:

1. Open the System Manager.
2. In the System Manager window, expand the **Integration Component Libraries** icon and highlight **Connectors**.
3. From the System Manager menu bar, click **Tools>Connector Configurator**. The Connector Configurator window opens and displays a **New Connector** dialog box.
4. When you click the pull-down menu next to **System Connectivity Integration Broker**, you can select ICS, WebSphere Message Brokers or WAS, depending on your broker.

To edit an existing configuration file:

1. In the System Manager window, select any of the configuration files listed in the Connector folder and right-click on it. Connector Configurator opens and displays the configuration file with the integration broker type and file name at the top.
2. Click the Standard Properties tab to see which properties are included in this configuration file.

---

## Creating a connector-specific property template

To create a configuration file for your connector, you need a connector-specific property template as well as the system-supplied standard properties.

You can create a brand-new template for the connector-specific properties of your connector, or you can use an existing file as the template.

- To create a new template, see “Creating a new template” on page 57.
- To use an existing file, simply modify an existing template and save it under the new name.

### Creating a new template

This section describes how you create properties in the template, define general characteristics and values for those properties, and specify any dependencies between the properties. Then you save the template and use it as the base for creating a new connector configuration file.

To create a template:

1. Click **File>New>Connector-Specific Property Template**.
2. The **Connector-Specific Property Template** dialog box appears, with the following fields:
  - **Template**, and **Name**  
Enter a unique name that identifies the connector, or type of connector, for which this template will be used. You will see this name again when you open the dialog box for creating a new configuration file from a template.
  - **Old Template**, and **Select the Existing Template to Modify**  
The names of all currently available templates are displayed in the Template Name display.

- To see the connector-specific property definitions in any template, select that template's name in the **Template Name** display. A list of the property definitions contained in that template will appear in the **Template Preview** display. You can use an existing template whose property definitions are similar to those required by your connector as a starting point for your template.
3. Select a template from the **Template Name** display, enter that template name in the **Find Name** field (or highlight your selection in **Template Name**), and click **Next**.

If you do not see any template that displays the connector-specific properties used by your connector, you will need to create one.

### Specifying general characteristics

When you click **Next** to select a template, the **Properties - Connector-Specific Property Template** dialog box appears. The dialog box has tabs for General characteristics of the defined properties and for Value restrictions. The General display has the following fields:

- **General:**
  - Property Type
  - Updated Method
  - Description
- **Flags**
  - Standard flags
- **Custom Flag**
  - Flag

After you have made selections for the general characteristics of the property, click the **Value** tab.

### Specifying values

The **Value** tab enables you to set the maximum length, the maximum multiple values, a default value, or a value range for the property. It also allows editable values. To do so:

1. Click the **Value** tab. The display panel for Value replaces the display panel for General.
2. Select the name of the property in the **Edit properties** display.
3. In the fields for **Max Length** and **Max Multiple Values**, make any changes. The changes will not be accepted unless you also open the **Property Value** dialog box for the property, described in the next step.
4. Right-click the box in the top left-hand corner of the value table and click **Add**. A **Property Value** dialog box appears. Depending on the property type, the dialog box allows you to enter either a value, or both a value and range. Enter the appropriate value or range, and click **OK**.
5. The **Value** panel refreshes to display any changes you made in **Max Length** and **Max Multiple Values**. It displays a table with three columns:
  - The **Value** column shows the value that you entered in the **Property Value** dialog box, and any previous values that you created.
  - The **Default Value** column allows you to designate any of the values as the default.
  - The **Value Range** shows the range that you entered in the **Property Value** dialog box.

After a value has been created and appears in the grid, it can be edited from within the table display. To make a change in an existing value in the table, select an entire row by clicking on the row number. Then right-click in the **Value** field and click **Edit Value**.

## Setting dependencies

When you have made your changes to the **General** and **Value** tabs, click **Next**. The **Dependencies - Connector-Specific Property Template** dialog box appears.

A dependent property is a property that is included in the template and used in the configuration file *only if* the value of another property meets a specific condition. For example, `PollQuantity` appears in the template only if JMS is the transport mechanism and `DuplicateEventElimination` is set to `True`.

To designate a property as dependent and to set the condition upon which it depends, do this:

1. In the **Available Properties** display, select the property that will be made dependent.
2. In the **Select Property** field, use the drop-down menu to select the property that will hold the conditional value.
3. In the **Condition Operator** field, select one of the following:
  - == (equal to)
  - != (not equal to)
  - > (greater than)
  - < (less than)
  - >= (greater than or equal to)
  - <=(less than or equal to)
4. In the **Conditional Value** field, enter the value that is required in order for the dependent property to be included in the template.
5. With the dependent property highlighted in the **Available Properties** display, click an arrow to move it to the **Dependent Property** display.
6. Click **Finish**. Connector Configurator stores the information you have entered as an XML document, under `\data\app` in the `\bin` directory where you have installed Connector Configurator.

---

## Creating a new configuration file

When you create a new configuration file, your first step is to select an integration broker. The broker you select determines the properties that will appear in the configuration file.

To select a broker:

- In the Connector Configurator home menu, click **File>New>Connector Configuration**. The **New Connector** dialog box appears.
- In the **Integration Broker** field, select ICS, WebSphere Message Brokers or WAS connectivity.
- Complete the remaining fields in the **New Connector** window, as described later in this chapter.

You can also do this:

- In the System Manager window, right-click on the **Connectors** folder and select **Create New Connector**. Connector Configurator opens and displays the **New Connector** dialog box.

## Creating a configuration file from a connector-specific template

Once a connector-specific template has been created, you can use it to create a configuration file:

1. Click **File>New>Connector Configuration**.
2. The **New Connector** dialog box appears, with the following fields:
  - **Name**  
Enter the name of the connector. Names are case-sensitive. The name you enter must be unique, and must be consistent with the file name for a connector that is installed on the system.  
  
**Important:** Connector Configurator does not check the spelling of the name that you enter. You must ensure that the name is correct.
  - **System Connectivity**  
Click ICS or WebSphere Message Brokers or WAS.
  - **Select Connector-Specific Property Template**  
Type the name of the template that has been designed for your connector. The available templates are shown in the **Template Name** display. When you select a name in the Template Name display, the **Property Template Preview** display shows the connector-specific properties that have been defined in that template.  
Select the template you want to use and click **OK**.
3. A configuration screen appears for the connector that you are configuring. The title bar shows the integration broker and connector names. You can fill in all the field values to complete the definition now, or you can save the file and complete the fields later.
4. To save the file, click **File>Save>To File** or **File>Save>To Project**. To save to a project, System Manager must be running.  
If you save as a file, the **Save File Connector** dialog box appears. Choose \*.cfg as the file type, verify in the File Name field that the name is spelled correctly and has the correct case, navigate to the directory where you want to locate the file, and click **Save**. The status display in the message panel of Connector Configurator indicates that the configuration file was successfully created.  
  
**Important:** The directory path and name that you establish here must match the connector configuration file path and name that you supply in the startup file for the connector.
5. To complete the connector definition, enter values in the fields for each of the tabs of the Connector Configurator window, as described later in this chapter.

---

## Using an existing file

You may have an existing file available in one or more of the following formats:

- A connector definition file.  
This is a text file that lists properties and applicable default values for a specific connector. Some connectors include such a file in a \repository directory in their delivery package (the file typically has the extension .txt; for example, CN\_XML.txt for the XML connector).
- An ICS repository file.  
Definitions used in a previous ICS implementation of the connector may be available to you in a repository file that was used in the configuration of that connector. Such a file typically has the extension .in or .out.

- A previous configuration file for the connector.  
Such a file typically has the extension \*.cfg.

Although any of these file sources may contain most or all of the connector-specific properties for your connector, the connector configuration file will not be complete until you have opened the file and set properties, as described later in this chapter.

To use an existing file to configure a connector, you must open the file in Connector Configurator, revise the configuration, and then resave the file.

Follow these steps to open a \*.txt, \*.cfg, or \*.in file from a directory:

1. In Connector Configurator, click **File>Open>From File**.
2. In the **Open File Connector** dialog box, select one of the following file types to see the available files:
  - Configuration (\*.cfg)
  - ICS Repository (\*.in, \*.out)  
Choose this option if a repository file was used to configure the connector in an ICS environment. A repository file may include multiple connector definitions, all of which will appear when you open the file.
  - All files (\*.\*)  
Choose this option if a \*.txt file was delivered in the adapter package for the connector, or if a definition file is available under another extension.
3. In the directory display, navigate to the appropriate connector definition file, select it, and click **Open**.

Follow these steps to open a connector configuration from a System Manager project:

1. Start System Manager. A configuration can be opened from or saved to System Manager only if System Manager has been started.
2. Start Connector Configurator.
3. Click **File>Open>From Project**.

---

## Completing a configuration file

When you open a configuration file or a connector from a project, the Connector Configurator window displays the configuration screen, with the current attributes and values.

The title of the configuration screen displays the integration broker and connector name as specified in the file. Make sure you have the correct broker. If not, change the broker value before you configure the connector. To do so:

1. Under the **Standard Properties** tab, select the value field for the BrokerType property. In the drop-down menu, select the value ICS, WMQI, or WAS.
2. The Standard Properties tab will display the properties associated with the selected broker. You can save the file now or complete the remaining configuration fields, as described in “Specifying supported business object definitions” on page 64..
3. When you have finished your configuration, click **File>Save>To Project** or **File>Save>To File**.

If you are saving to file, select \*.cfg as the extension, select the correct location for the file and click **Save**.

If multiple connector configurations are open, click **Save All to File** to save all of the configurations to file, or click **Save All to Project** to save all connector configurations to a System Manager project.

Before it saves the file, Connector Configurator checks that values have been set for all required standard properties. If a required standard property is missing a value, Connector Configurator displays a message that the validation failed. You must supply a value for the property in order to save the configuration file.

---

## Setting the configuration file properties

When you create and name a new connector configuration file, or when you open an existing connector configuration file, Connector Configurator displays a configuration screen with tabs for the categories of required configuration values.

Connector Configurator requires values for properties in these categories for connectors running on all brokers:

- Standard Properties
- Connector-specific Properties
- Supported Business Objects
- Trace/Log File values
- Data Handler (applicable for connectors that use JMS messaging with guaranteed event delivery)

**Note:** For connectors that use JMS messaging, an additional category may display, for configuration of data handlers that convert the data to business objects.

For connectors running on **ICS**, values for these properties are also required:

- Associated Maps
- Resources
- Messaging (where applicable)

**Important:** Connector Configurator accepts property values in either English or non-English character sets. However, the names of both standard and connector-specific properties, and the names of supported business objects, must use the English character set only.

Standard properties differ from connector-specific properties as follows:

- Standard properties of a connector are shared by both the application-specific component of a connector and its broker component. All connectors have the same set of standard properties. These properties are described in Appendix A of each adapter guide. You can change some but not all of these values.
- Application-specific properties apply only to the application-specific component of a connector, that is, the component that interacts directly with the application. Each connector has application-specific properties that are unique to its application. Some of these properties provide default values and some do not; you can modify some of the default values. The installation and configuration chapters of each adapter guide describe the application-specific properties and the recommended values.

The fields for **Standard Properties** and **Connector-Specific Properties** are color-coded to show which are configurable:



- A field with a grey background indicates a standard property. You can change the value but cannot change the name or remove the property.
- A field with a white background indicates an application-specific property. These properties vary according to the specific needs of the application or connector. You can change the value and delete these properties.
- Value fields are configurable.
- The **Update Method** field is informational and not configurable. This field specifies the action required to activate a property whose value has changed.

## Setting standard connector properties

To change the value of a standard property:

1. Click in the field whose value you want to set.
2. Either enter a value, or select one from the drop-down menu if it appears.
3. After entering all the values for the standard properties, you can do one of the following:
  - To discard the changes, preserve the original values, and exit Connector Configurator, click **File>Exit** (or close the window), and click **No** when prompted to save changes.
  - To enter values for other categories in Connector Configurator, select the tab for the category. The values you enter for **Standard Properties** (or any other category) are retained when you move to the next category. When you close the window, you are prompted to either save or discard the values that you entered in all the categories as a whole.
  - To save the revised values, click **File>Exit** (or close the window) and click **Yes** when prompted to save changes. Alternatively, click **Save>To File** from either the File menu or the toolbar.

## Setting application-specific configuration properties

For application-specific configuration properties, you can add or change property names, configure values, delete a property, and encrypt a property. The default property length is 255 characters.

1. Right-click in the top left portion of the grid. A pop-up menu bar will appear. Click **Add** to add a property. To add a child property, right-click on the parent row number and click **Add child**.
2. Enter a value for the property or child property.
3. To encrypt a property, select the **Encrypt** box.
4. Choose to save or discard changes, as described for “Setting standard connector properties.”

The Update Method displayed for each property indicates whether a component or agent restart is necessary to activate changed values.

**Important:** Changing a preset application-specific connector property name may cause a connector to fail. Certain property names may be needed by the connector to connect to an application or to run properly.

## Encryption for connector properties

Application-specific properties can be encrypted by selecting the **Encrypt** check box in the **Edit Property** window. To decrypt a value, click to clear the **Encrypt** check box, enter the correct value in the **Verification** dialog box, and click **OK**. If the entered value is correct, the value is decrypted and displays.

The adapter user guide for each connector contains a list and description of each property and its default value.

If a property has multiple values, the **Encrypt** check box will appear for the first value of the property. When you select **Encrypt**, all values of the property will be encrypted. To decrypt multiple values of a property, click to clear the **Encrypt** check box for the first value of the property, and then enter the new value in the **Verification** dialog box. If the input value is a match, all multiple values will decrypt.

### Update method

Refer to the descriptions of update methods found in the *Standard configuration properties for connectors* appendix, under “Setting and updating property values” on page 40.

## Specifying supported business object definitions

Use the **Supported Business Objects** tab in Connector Configurator to specify the business objects that the connector will use. You must specify both generic business objects and application-specific business objects, and you must specify associations for the maps between the business objects.

**Note:** Some connectors require that certain business objects be specified as supported in order to perform event notification or additional configuration (using meta-objects) with their applications. For more information, see the *Connector Development Guide for C++* or the *Connector Development Guide for Java*.

### If ICS is your broker

To specify that a business object definition is supported by the connector, or to change the support settings for an existing business object definition, click the **Supported Business Objects** tab and use the following fields.

**Business object name:** To designate that a business object definition is supported by the connector, with System Manager running:

1. Click an empty field in the **Business Object Name** list. A drop-down list displays, showing all the business object definitions that exist in the System Manager project.
2. Click on a business object to add it.
3. Set the **Agent Support** (described below) for the business object.
4. In the File menu of the Connector Configurator window, click **Save to Project**. The revised connector definition, including designated support for the added business object definition, is saved to the project in System Manager.

To delete a business object from the supported list:

1. To select a business object field, click the number to the left of the business object.
2. From the **Edit** menu of the Connector Configurator window, click **Delete Row**. The business object is removed from the list display.
3. From the **File** menu, click **Save to Project**.

Deleting a business object from the supported list changes the connector definition and makes the deleted business object unavailable for use in this implementation of this connector. It does not affect the connector code, nor does it remove the business object definition itself from System Manager.

**Agent support:** If a business object has Agent Support, the system will attempt to use that business object for delivering data to an application via the connector agent.

Typically, application-specific business objects for a connector are supported by that connector's agent, but generic business objects are not.

To indicate that the business object is supported by the connector agent, check the **Agent Support** box. The Connector Configurator window does not validate your Agent Support selections.

**Maximum transaction level:** The maximum transaction level for a connector is the highest transaction level that the connector supports.

For most connectors, Best Effort is the only possible choice.

You must restart the server for changes in transaction level to take effect.

### **If a WebSphere Message Broker is your broker**

If you are working in stand-alone mode (not connected to System Manager), you must enter the business name manually.

If you have System Manager running, you can select the empty box under the **Business Object Name** column in the **Supported Business Objects** tab. A combo box appears with a list of the business object available from the Integration Component Library project to which the connector belongs. Select the business object you want from the list.

The **Message Set ID** is an optional field for WebSphere Business Integration Message Broker 5.0, and need not be unique if supplied. However, for WebSphere MQ Integrator and Integrator Broker 2.1, you must supply a unique **ID**.

### **If WAS is your broker**

When WebSphere Application Server is selected as your broker type, Connector Configurator does not require message set IDs. The **Supported Business Objects** tab shows a **Business Object Name** column only for supported business objects.

If you are working in stand-alone mode (not connected to System Manager), you must enter the business object name manually.

If you have System Manager running, you can select the empty box under the Business Object Name column in the Supported Business Objects tab. A combo box appears with a list of the business objects available from the Integration Component Library project to which the connector belongs. Select the business object you want from this list.

## **Associated maps (ICS only)**

Each connector supports a list of business object definitions and their associated maps that are currently active in WebSphere InterChange Server. This list appears when you select the **Associated Maps** tab.

The list of business objects contains the application-specific business object which the agent supports and the corresponding generic object that the controller sends to the subscribing collaboration. The association of a map determines which map

will be used to transform the application-specific business object to the generic business object or the generic business object to the application-specific business object.

If you are using maps that are uniquely defined for specific source and destination business objects, the maps will already be associated with their appropriate business objects when you open the display, and you will not need (or be able) to change them.

If more than one map is available for use by a supported business object, you will need to explicitly bind the business object with the map that it should use.

The **Associated Maps** tab displays the following fields:

- **Business Object Name**

These are the business objects supported by this connector, as designated in the **Supported Business Objects** tab. If you designate additional business objects under the Supported Business Objects tab, they will be reflected in this list after you save the changes by choosing **Save to Project** from the **File** menu of the Connector Configurator window.

- **Associated Maps**

The display shows all the maps that have been installed to the system for use with the supported business objects of the connector. The source business object for each map is shown to the left of the map name, in the **Business Object Name** display.

- **Explicit**

In some cases, you may need to explicitly bind an associated map.

Explicit binding is required only when more than one map exists for a particular supported business object. When ICS boots, it tries to automatically bind a map to each supported business object for each connector. If more than one map takes as its input the same business object, the server attempts to locate and bind one map that is the superset of the others.

If there is no map that is the superset of the others, the server will not be able to bind the business object to a single map, and you will need to set the binding explicitly.

To explicitly bind a map:

1. In the **Explicit** column, place a check in the check box for the map you want to bind.
2. Select the map that you intend to associate with the business object.
3. In the **File** menu of the Connector Configurator window, click **Save to Project**.
4. Deploy the project to ICS.
5. Reboot the server for the changes to take effect.

## Resources (ICS)

The **Resource** tab allows you to set a value that determines whether and to what extent the connector agent will handle multiple processes concurrently, using connector agent parallelism.

Not all connectors support this feature. If you are running a connector agent that was designed in Java to be multi-threaded, you are advised not to use this feature, since it is usually more efficient to use multiple threads than multiple processes.

## Messaging (ICS)

The messaging properties are available only if you have set MQ as the value of the `DeliveryTransport` standard property and ICS as the broker type. These properties affect how your connector will use queues.

## Setting trace/log file values

When you open a connector configuration file or a connector definition file, Connector Configurator uses the logging and tracing values of that file as default values. You can change those values in Connector Configurator.

To change the logging and tracing values:

1. Click the **Trace/Log Files** tab.
2. For either logging or tracing, you can choose to write messages to one or both of the following:

- To console (STDOUT):  
Writes logging or tracing messages to the STDOUT display.

**Note:** You can only use the STDOUT option from the **Trace/Log Files** tab for connectors running on the Windows platform.

- To File:  
Writes logging or tracing messages to a file that you specify. To specify the file, click the directory button (ellipsis), navigate to the preferred location, provide a file name, and click **Save**. Logging or tracing message are written to the file and location that you specify.

**Note:** Both logging and tracing files are simple text files. You can use the file extension that you prefer when you set their file names. For tracing files, however, it is advisable to use the extension `.trace` rather than `.trc`, to avoid confusion with other files that might reside on the system. For logging files, `.log` and `.txt` are typical file extensions.

## Data handlers

The data handlers section is available for configuration only if you have designated a value of JMS for `DeliveryTransport` and a value of JMS for `ContainerManagedEvents`. Not all adapters make use of data handlers.

See the descriptions under `ContainerManagedEvents` in Appendix A, *Standard Properties*, for values to use for these properties. For additional details, see the *Connector Development Guide for C++* or the *Connector Development Guide for Java*.

---

## Saving your configuration file

When you have finished configuring your connector, save the connector configuration file. Connector Configurator saves the file in the broker mode that you selected during configuration. The title bar of Connector Configurator always displays the broker mode (ICS, WMQI or WAS) that it is currently using.

The file is saved as an XML document. You can save the XML document in three ways:

- From System Manager, as a file with a `*.con` extension in an Integration Component Library, or
- In a directory that you specify.
- In stand-alone mode, as a file with a `*.cfg` extension in a directory folder.

For details about using projects in System Manager, and for further information about deployment, see the following implementation guides:

- For ICS: *Implementation Guide for WebSphere InterChange Server*
- For WebSphere Message Brokers: *Implementing Adapters with WebSphere Message Brokers*
- For WAS: *Implementing Adapters with WebSphere Application Server*

---

## Changing a configuration file

You can change the integration broker setting for an existing configuration file. This enables you to use the file as a template for creating a new configuration file, which can be used with a different broker.

**Note:** You will need to change other configuration properties as well as the broker mode property if you switch integration brokers.

To change your broker selection within an existing configuration file (optional):

- Open the existing configuration file in Connector Configurator.
- Select the **Standard Properties** tab.
- In the **BrokerType** field of the Standard Properties tab, select the value that is appropriate for your broker.  
When you change the current value, the available tabs and field selections on the properties screen will immediately change, to show only those tabs and fields that pertain to the new broker you have selected.

---

## Completing the configuration

After you have created a configuration file for a connector and modified it, make sure that the connector can locate the configuration file when the connector starts up.

To do so, open the startup file used for the connector, and verify that the location and file name used for the connector configuration file match exactly the name you have given the file and the directory or path where you have placed it.

---

## Using Connector Configurator in a globalized environment

Connector Configurator is globalized and can handle character conversion between the configuration file and the integration broker. Connector Configurator uses native encoding. When it writes to the configuration file, it uses UTF-8 encoding.

Connector Configurator supports non-English characters in:

- All value fields
- Log file and trace file path (specified in the **Trace/Log files** tab)

The drop list for the CharacterEncoding and Locale standard configuration properties displays only a subset of supported values. To add other values to the drop list, you must manually modify the `\Data\Std\stdConnProps.xml` file in the product directory.

For example, to add the locale `en_GB` to the list of values for the Locale property, open the `stdConnProps.xml` file and add the line in boldface type below:

```
<Property name="Locale"
isRequired="true"
updateMethod="component restart">
  <ValidType>String</ValidType>
  <ValidValues>
    <Value>ja_JP</Value>
    <Value>ko_KR</Value>
    <Value>zh_CN</Value>
    <Value>zh_TW</Value>
    <Value>fr_FR</Value>
    <Value>de_DE</Value>
    <Value>it_IT</Value>
    <Value>es_ES</Value>
    <Value>pt_BR</Value>
    <Value>en_US</Value>
    <Value>en_GB</Value>
  <DefaultValue>en_US</DefaultValue>
</ValidValues>
</Property>
```





---

## Notices

IBM may not offer the products, services, or features discussed in this document in all countries. Consult your local IBM representative for information on the products and services currently available in your area. Any reference to an IBM product, program, or service is not intended to state or imply that only that IBM product, program, or service may be used. Any functionally equivalent product, program, or service that does not infringe any IBM intellectual property right may be used instead. However, it is the user's responsibility to evaluate and verify the operation of any non-IBM product, program, or service.

IBM may have patents or pending patent applications covering subject matter described in this document. The furnishing of this document does not give you any license to these patents. You can send license inquiries, in writing, to:

IBM Director of Licensing  
IBM Corporation  
North Castle Drive  
Armonk, NY 10504-1785  
U.S.A.

The following paragraph does not apply to the United Kingdom or any other country where such provisions are inconsistent with local law:

INTERNATIONAL BUSINESS MACHINES CORPORATION PROVIDES THIS PUBLICATION "AS IS" WITHOUT WARRANTY OF ANY KIND, EITHER EXPRESS OR IMPLIED, INCLUDING, BUT NOT LIMITED TO, THE IMPLIED WARRANTIES OF NON-INFRINGEMENT, MERCHANTABILITY OR FITNESS FOR A PARTICULAR PURPOSE. Some states do not allow disclaimer of express or implied warranties in certain transactions, therefore, this statement may not apply to you.

This information could include technical inaccuracies or typographical errors. Changes are periodically made to the information herein; these changes will be incorporated in new editions of the publication. IBM may make improvements and/or changes in the product(s) and/or program(s) described in this publication at any time without notice.

Any references in this information to non-IBM Web sites are provided for convenience only and do not in any manner serve as an endorsement of those Web sites. The materials at those Web sites are not part of the materials for this IBM product and use of those Web sites is at your own risk.

IBM may use or distribute any of the information you supply in any way it believes appropriate without incurring any obligation to you.

Licensees of this program who wish to have information about it for the purpose of enabling: (i) the exchange of information between independently created programs and other programs (including this one) and (ii) the mutual use of the information which has been exchanged, should contact:

IBM Burlingame Laboratory Director  
IBM Burlingame Laboratory  
577 Airport Blvd., Suite 800

Burlingame, CA 94010  
U.S.A

Such information may be available, subject to appropriate terms and conditions, including in some cases, payment of a fee.

The licensed program described in this document and all licensed material available for it are provided by IBM under terms of the IBM Customer Agreement, IBM International Program License Agreement, or any equivalent agreement between us.

Any performance data contained herein was determined in a controlled environment. Therefore, the results obtained in other operating environments may vary significantly. Some measurements may have been made on development-level systems and there is no guarantee that these measurements will be the same on generally available systems. Furthermore, some measurement may have been estimated through extrapolation. Actual results may vary. Users of this document should verify the applicable data for their specific environment.

Information concerning non-IBM products was obtained from the suppliers of those products, their published announcements or other publicly available sources. IBM has not necessarily tested those products and cannot confirm the accuracy of performance, compatibility or any other claims related to non-IBM products. Questions on the capabilities of non-IBM products should be addressed to the suppliers of those products.

This information may contain examples of data and reports used in daily business operations. To illustrate them as completely as possible, the examples may include the names of individuals, companies, brands, and products. All of these names are fictitious and any similarity to the names and addresses used by an actual business enterprise is entirely coincidental.

All statements regarding IBM's future direction or intent are subject to change or withdrawal without notice, and represent goals and objectives only.

---

## Programming interface information

Programming interface information, if provided, is intended to help you create application software using this program.

General-use programming interfaces allow you to write application software that obtain the services of this program's tools.

However, this information may also contain diagnosis, modification, and tuning information. Diagnosis, modification and tuning information is provided to help you debug your application software.

**Warning:** Do not use this diagnosis, modification, and tuning information as a programming interface because it is subject to change.

---

## Trademarks and service marks

The following terms are trademarks or registered trademarks of International Business Machines Corporation in the United States or other countries, or both:

IBM  
the IBM logo  
AIX  
CrossWorlds  
DB2  
DB2 Universal Database  
Domino  
Lotus  
Lotus Notes  
MQIntegrator  
MQSeries  
Tivoli  
WebSphere

Microsoft, Windows, Windows NT, and the Windows logo are trademarks of Microsoft Corporation in the United States, other countries, or both.

MMX, Pentium, and ProShare are trademarks or registered trademarks of Intel Corporation in the United States, other countries, or both.

Java and all Java-based trademarks are trademarks of Sun Microsystems, Inc. in the United States, other countries, or both.

Other company, product or service names may be trademarks or service marks of others.

The adapter for JD Edwards OneWorld includes software developed by the Eclipse Project (<http://www.eclipse.org/>).



IBM WebSphere Business Integration Adapter Framework V2.4.0

IBM WebSphere InterChange Server V4.3, IBM WebSphere Business Integration Toolset V4.3, IBM WebSphere Business Integration Adapters V2.4, IBM WebSphere Business Integration Collaborations V4.3







Printed in USA