

IBM WebSphere Business Integration Adapters



Adapter for WebSphere Business Integration Message Broker User Guide

V 2.6.x

IBM WebSphere Business Integration Adapters



Adapter for WebSphere Business Integration Message Broker User Guide

V 2.6.x

Note!

Before using this information and the product it supports, read the information in "Notices" on page 95.

25 June 2004

This edition of this document applies to IBM WebSphere Business Integration Adapter for WebSphere Integration Message Broker(5724-H37), version 2.6.x.

To send us your comments about this document, e-mail doc-comments@us.ibm.com. We look forward to hearing from you.

When you send information to IBM, you grant IBM a nonexclusive right to use or distribute the information in any way it believes appropriate without incurring any obligation to you.

© **Copyright International Business Machines Corporation 2000, 2004. All rights reserved.**

US Government Users Restricted Rights – Use, duplication or disclosure restricted by GSA ADP Schedule Contract with IBM Corp.

Contents

About this document	v
Audience	v
Prerequisites for this document	v
Related documents	v
Typographic conventions	vi
New in this release	vii
New in release 2.6.x	vii
New in release 2.5.x	vii
New in release 2.4.x	vii
New in release 2.3.x	vii
New in release 2.2.x	viii
New in release 2.1.x	viii
New in release 1.5.x	viii
New in release 1.4.x	ix
New in release 1.3.x	ix
Chapter 1. Overview	1
Task roadmap	1
Terminology	1
Overview of the adapter environment	3
Overview of adapter processing	4
Chapter 2. Installing the connector.	11
Overview of installation tasks	11
Adapter environment	11
Installing the adapter and related files	13
Verifying installation	13
Chapter 3. Configuring the connector	17
Overview of configuring the connector	17
Overview of Connector Configurator	18
Starting Connector Configurator	19
Running Configurator from System Manager	19
Creating a connector-specific property template	20
Creating a new configuration file	22
Using an existing file	23
Completing a configuration file	24
Setting the configuration file properties	25
Saving your configuration file	30
Changing a configuration file	31
Completing the configuration	31
Using Connector Configurator in a globalized environment	31
Creating multiple connector instances	32
Verifying a sample configuration	33
Setting Queue Uniform Resource Identifiers (URI)	33
Guaranteeing event delivery	35
Chapter 4. Running the connector	37
Overview of running the connector	37
Configuring startup files	37
Starting the connector	38
Stopping the connector	39
Overview of error handling	39

Overview of tracing	41
Chapter 5. Creating objects	43
Overview of creating objects	43
Creating business objects	43
Modifying business objects	45
Creating meta-objects	47
Chapter 6. Configuring a data handler	57
Overview of configuring the data handler	57
Specifying the data handler	57
Modifying a message flow	58
Chapter 7. Troubleshooting	61
Troubleshooting start-up problems.	61
Troubleshooting event processing	61
Getting support	62
Appendix A. Standard configuration properties for connectors	63
New and deleted properties	63
Configuring standard connector properties	63
Summary of standard properties	64
Standard configuration properties	69
Appendix B. Connector-specific properties for the WBI Message Broker adapter.	81
Overview of connector-specific properties	81
Appendix C. Tutorial	87
Overview of the tutorial	87
Before you begin	88
Setting up your environment	88
Running the scenarios	91
Index	93
Notices	95
Programming interface information	96
Trademarks and service marks	97

About this document

The IBM(R) WebSphere(R) Business Integration Adapter portfolio supplies integration connectivity for leading e-business technologies, enterprise applications, legacy, and mainframe systems. The product set includes tools and templates for customizing, creating, and managing components for business process integration.

This document describes the installation, configuration, and business object development for the adapter for WebSphere Integration Message Broker.

Audience

This document is for consultants, developers, and system administrators who support and manage the WebSphere business integration product at customer sites.

Prerequisites for this document

Users of this document should be familiar with the WebSphere business integration system, with business object and collaboration development, and with the WebSphere Integration Message Broker application.

Related documents

The complete set of documentation available with this product describes the features and components common to all WebSphere Business Integration Adapters installations, and includes reference material on specific components.

This document contains many references to two other documents: the *System Installation Guide for Windows or for UNIX* and the *System Implementation Guide for WebSphere InterChange Server*. If you choose to print this document, you may want to print these documents as well.

You can install related documentation from the following sites:

- For general adapter information; for using adapters with WebSphere message brokers (WebSphere MQ Integrator, WebSphere MQ Integrator Broker, WebSphere Business Integration Message Broker); and for using adapters with WebSphere Application Server:
<http://www.ibm.com/websphere/integration/wbiadapters/infocenter>
- For using adapters with InterChange Server:
<http://www.ibm.com/websphere/integration/wicserver/infocenter>
<http://www.ibm.com/websphere/integration/wbicollaborations/infocenter>
- For more information about message brokers (WebSphere MQ Integrator Broker, WebSphere MQ Integrator, and WebSphere Business Integration Message Broker):
<http://www.ibm.com/software/integration/mqfamily/library/manualsa/>
- For more information about WebSphere Application Server:
<http://www.ibm.com/software/webservers/appserv/library.html>

These sites contain simple directions for downloading, installing, and viewing the documentation.

Note: Important information about this product may be available in Technical Support Technotes and Flashes issued after this document was published. These can be found on the WebSphere Business Integration Support Web site, <http://www.ibm.com/software/integration/websphere/support/>. Select the component area of interest and browse the Technotes and Flashes sections. Additional information might also be available in IBM Redbooks at <http://www.redbooks.ibm.com/>.

Typographic conventions

This document uses the following conventions:

courier font	Indicates a literal value, such as a command name, filename, information that you type, or information that the system prints on the screen.
bold	Indicates a new term the first time that it appears.
<i>italic, italic</i>	Indicates a variable name or a cross-reference.
blue outline	A blue outline, which is visible only when you view the manual online, indicates a cross-reference hyperlink. Click inside the outline to jump to the object of the reference.
{ }	In a syntax line, curly braces surround a set of options from which you must choose one and only one.
[]	In a syntax line, square brackets surround an optional parameter.
...	In a syntax line, ellipses indicate a repetition of the previous parameter. For example, <code>option[,...]</code> means that you can enter multiple, comma-separated options.
< >	In a naming convention, angle brackets surround individual elements of a name to distinguish them from each other, as in <code><server_name><connector_name>tmp.log</code> .
/, \	In this document, backslashes (\) are used as the convention for directory paths. For UNIX installations, substitute slashes (/) for backslashes. All product pathnames are relative to the directory where the product is installed on your system.
%text% and \$text	Text within percent (%) signs indicates the value of the Windows text system variable or user variable. The equivalent notation in a UNIX environment is <code>\$text</code> , indicating the value of the <code>text</code> UNIX environment variable.
<i>ProductDir</i>	Represents the directory where the product is installed.

New in this release

New in release 2.6.x

Two connector-specific properties have been added: `EnableMessageProducerCache` and `SessionPoolSizeForRequests`. For more information, see Appendix B, “Connector-specific properties for the WBI Message Broker adapter,” on page 81.

The adapter has been rebranded from the Adapter for WebSphere MQ Integrator Broker to the Adapter for WebSphere Integration Message Broker.

As of version 2.6.x, the adapter is not supported on Solaris 7, so references to that platform version have been deleted from this guide.

New in release 2.5.x

The connector now runs on the following platforms:

- Microsoft Windows 2000
- Solaris 7, 8 or AIX 5.1, 5.2 or HP UX 11.i

Beginning with the 2.5.0 version, the adapter for WebSphere MQ is no longer supported on Microsoft Windows NT.

Adapter installation information has been moved from this guide. See Chapter 2 for the new location of that information.

New in release 2.4.x

The adapter can now use WebSphere Application Server as an integration broker. For further information, see “Broker compatibility” on page 11.

The connector now runs on the following platforms:

- Microsoft Windows NT 4.0 Service Pack 6A or Windows 2000
- Solaris 7, 8 or AIX 5.1, 5.2 or HP UX 11.i

New in release 2.3.x

Updated in March, 2003. The “CrossWorlds” name is no longer used to describe an entire system or to modify the names of components or tools, which are otherwise mostly the same as before. For example “CrossWorlds System Manager” is now “System Manager,” and “CrossWorlds InterChange Server” is now “WebSphere InterChange Server.”

You can now associate a data handler with an input queue. For further information, see “Overview of mapping data handlers to input queues” on page 52.

The adapter now supports the WebSphere MQ Event Broker as well as the WebSphere MQ Integrator Broker and the WebSphere InterChange Server integration brokers.

The guaranteed event delivery feature has been enhanced. For further information, see “Guaranteeing event delivery” on page 35.

New in release 2.2.x

The InProgress queue is no longer required and may be disabled. For more information, see “InProgressQueue” on page 85.

The connector supports interoperability with applications via MQSeries 5.1, 5.2, and 5.3. For more information, see “Adapter dependencies” on page 12.

The connector now has a UseDefaults property for business object processing. For more information, see “UseDefaults” on page 85.

The connector can now apply a default verb when the data handler does not explicitly assign one to a business object. For more information, see “DefaultVerb” on page 83.

The ReplyToQueue can now be dictated via the dynamic child meta-object rather than by the ReplyToQueue connector property. For more information see “JMS headers and dynamic child meta-object attributes” on page 54.

You can use a message selector to identify, filter and otherwise control how the adapter identifies the response message for a given request. This JMS capability applies to synchronous request processing only. For more information, see “Synchronous delivery” on page 5.

New in release 2.1.x

The connector has been internationalized. For more information, see “Task roadmap” on page 1 and Appendix A, “Standard configuration properties for connectors,” on page 63.

This guide provides information about using this adapter with ICS.

Note: To use the guaranteed event delivery feature, you must install release 4.1.1.2 of ICS.

New in release 1.5.x

The IBM WebSphere Business Integration Adapter for MQ Integrator includes the connector for MQ Integrator. This adapter operates with the InterChange Server (ICS) integration broker. An integration broker, which is an application that performs integration of heterogeneous sets of applications, provides services that include data routing. The adapter includes:

- An application component specific to MQ Integrator
- Sample business objects
- IBM WebSphere Adapter Framework, which consists of:
 - Connector Framework
 - Development tools (including Business Object Designer and IBM CrossWorlds System Manager)
 - APIs (including CDK)

This manual provides information about using this adapter with ICS.

Important: Because the connector has not been internationalized, do not run it against ICS version 4.1.1 if you cannot guarantee that only ISO Latin-1 data will be processed.

The connector has been enabled for the IBM CrossWorlds 4.1.x system.

New in release 1.4.x

In the 1.4.x release of this document, minor changes were made to fix defects and to provide compatibility with IBM CrossWorlds infrastructure release version 4.0.0.

New in release 1.3.x

The 1.3.x release of this document contains information for the following new features and product enhancements:

- Support for synchronous request and response handling to confirm Create, Update and Delete operations.
- Support for Retrieve, Retrieve By Content, and Exist operations.
- Full archiving of messages, including successfully processed and unsubscribed messages as well as those containing errors.
- Enhanced capability to assign the same message format to more than one business object.
- The connector can now identify local queues without requiring a fully-qualified URI. Accordingly, the "URI" suffix is no longer part of the following connector properties: InputQueueURI, InProgressQueueURI, UnsubscribedURI, and ErrorQueueURI.
- Additional default conversion properties in the connector meta-object. Accordingly, the connector property DefaultOutputQueueURI has been removed.

Chapter 1. Overview

- “Task roadmap”
- “Terminology”
- “Overview of the adapter environment” on page 3

This chapter provides an overview, explaining terms you need to know and describing adapter processing. It is important that you understand the adapter before installing, configuring, and using it.

Task roadmap

To use the Adapter for WebSphere Business Integration Message Broker, you must perform the tasks described in Table 1.

Table 1. Using the adapter: task roadmap

Task	Associated procedure(s) (see...)	For more information (see...)
Installing the connector	Chapter 2, “Installing the connector,” on page 11	<i>Installation Guide for WebSphere Business Integration Adapters</i>
Configuring business and meta- objects	Chapter 5, “Creating objects,” on page 43	<i>Business Object Development Guide</i>
Configuring a data handler	Chapter 6, “Configuring a data handler,” on page 57	<i>Data Handler Guide</i>
Configuring the connector	Chapter 3, “Configuring the connector,” on page 17	Appendix A, “Standard configuration properties for connectors,” on page 63, Appendix B, “Connector-specific properties for the WBI Message Broker adapter,” on page 81 <i>Connector Development Guide</i>
Running the connector	Chapter 4, “Running the connector,” on page 37	
Troubleshooting the connector	Chapter 7, “Troubleshooting,” on page 61	
Running the tutorial	Appendix C, “Tutorial,” on page 87	

Terminology

To understand the adapter, you must understand these terms:

adapter

The component in the WebSphere business integration system that provides components to support communication between an integration broker and either an application or a technology. An adapter always includes a connector, message files, and configuration tools. It can also include an Object Discovery Agent (ODA). Some adapters also may require a data handler.

adapter framework

The software that IBM provides to configure and run an adapter. The runtime components of the adapter framework include the Java runtime

environment, the connector framework, and the Object Discovery Agent (ODA) runtime. This connector framework includes the connector libraries (C++ and Java) needed to develop new connectors. The ODA runtime includes the library in the Object Development Kit (ODK) needed to develop new ODAs. The configuration components include the following tools:

- Business Object Designer,
- Connector Configurator,
- Log Viewer,
- System Manager,
- Adapter Monitor,
- Test Connector
- and, optionally, any Object Discovery Agents (ODAs) associated with an adapter.

Adapter Development Kit (ADK)

A development kit that provides some samples for adapter development, including sample connectors and Object Discovery Agents (ODAs).

connector

The component of an adapter that uses business objects to send information about an event to an integration broker (event notification) or receive information about a request from the integration broker (request processing). A connector consists of the connector framework and the connector's application-specific component.

connector framework

The component of a connector that manages interactions between a connector's application-specific component and the integration broker. This component provides all required management services and retrieves the meta-data that the connector requires from the repository. The connector framework, whose code is common to all connectors, is written in Java and includes a C++ extension to support application-specific components written in C++.

connector controller

The subcomponent of the connector framework that interacts with collaborations. A connector controller runs within InterChange Server and initiates mapping between application-specific and generic business objects, and manages collaboration subscriptions to business object definitions.

integration broker

The component in the WebSphere business integration system that integrates data among heterogeneous applications. An integration broker typically provides a variety of services that include: the ability to route data, a repository of rules that govern the integration process, connectivity to a variety of applications, and administrative capabilities that facilitate integration. Examples of integration brokers: the WebSphere Business Integration Message Broker; WebSphere Business InterChange Server.

WebSphere business integration system

An enterprise solution that moves information among diverse sources to perform business exchanges, and that processes and routes information among disparate applications in the enterprise environment. The business integration system consists of an integration broker and one or more adapters.

WebSphere Integration Message Broker, Version 2.2

A message broker product that transforms and routes messages between WebSphere MQ queues. The technology enables applications to communicate asynchronously by delivering messages to and receiving messages from potentially remote queues. A major change with WebSphere Integration Message Broker is the addition of message flows that add the ability to format, store, and route messages based on user-defined logic.

Overview of the adapter environment

Figure 1 shows the adapter, its components, and their relationships within the WebSphere business integration system. The illustration shows a typical configuration. The adapter is configured to exchange messages with a legacy application whose messages flow through the WebSphere Business Integration Message Broker, and to exchange business objects with InterChange Server. The connector is metadata-driven. Message routing and format conversion is initiated by an event polling technique. The connector uses an MQ implementation of the Java™ Message Service (JMS), an API for accessing enterprise-messaging systems.

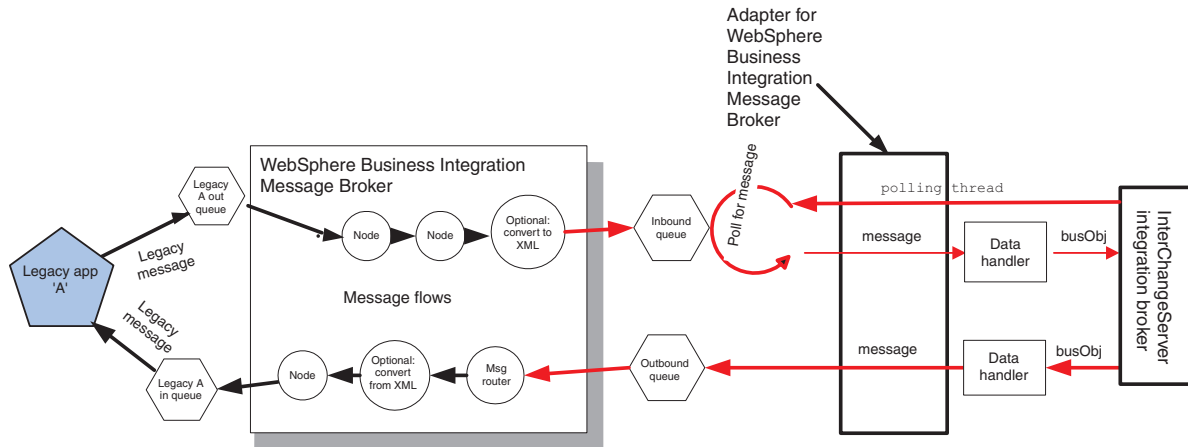


Figure 1. Adapter in the WBI environment

The connector allows collaborations to asynchronously exchange business objects with applications that issue or receive WebSphere MQ messages when changes to data occur.

The connector retrieves WebSphere MQ messages from queues, calls data handlers to convert messages to their corresponding business objects, and then delivers them to collaborations. In the opposite direction, the connector receives business objects from collaborations, converts them into WebSphere MQ messages using the same data handler, and then delivers the message to a WebSphere MQ queue.

Recommendation: You can configure the connector to use any data handler when processing messages. However, since the WebSphere Integration Message Broker can optionally convert any parsable message into XML format, it is highly recommended that you configure the connector to deliver all messages in XML. This means implementing the XML data handler for processing. For an overview and procedure, see “Overview of configuring the data handler” on page 57.

Overview of adapter processing

The adapter makes use of IBM's WebSphere MQ implementation of the Java Message Service (JMS). The JMS is an open-standard API for accessing enterprise-messaging systems. It is designed to allow business applications to asynchronously send and receive business data and events.

The adapter does not directly interact with WBI Message Broker. As part of configuring the connector, you set up WebSphere MQ queues as the input and output nodes for the WBI Message Broker message flows. The adapter communicates with a WebSphere MQ queue manager that hosts the message broker to which the message flows are deployed.

Message request

Figure 2 illustrates a message request communication for the connector, the adapter's runtime component. When the `doVerbFor()` method receives a business object from a collaboration, the connector passes the business object to the data handler. The data handler converts the business object into a suitable message and issues it to a queue. There, the JMS layer makes the appropriate calls to open a queue session and route the message. You can configure the connector to issue requests asynchronously (fire and forget). Or you can configure connector properties to enable synchronous request processing.

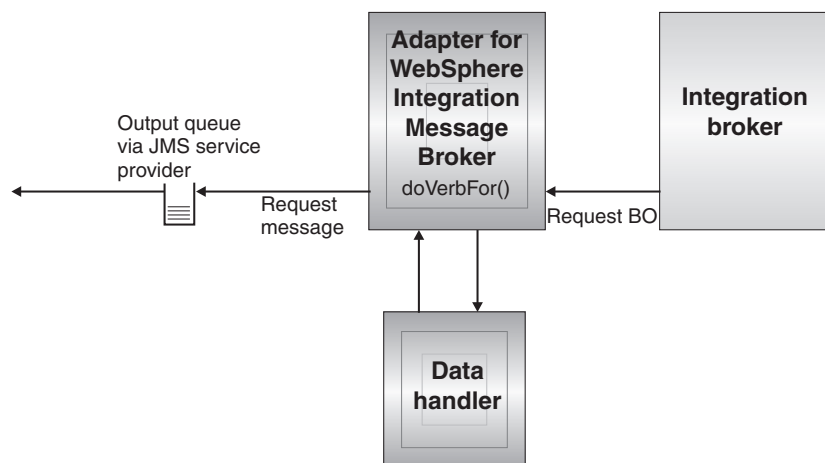


Figure 2. Message request processing

The connector processes business objects passed to it by a collaboration based on the verb for each business object. The connector uses business object handlers and the `doVerbFor()` method to process the business objects that the connector supports. The connector supports the following business object verbs:

- Create
- Update
- Delete
- Retrieve
- Exists
- Retrieve by Content

Note: Business objects with Create, Update, and Delete verbs can be issued either asynchronously or synchronously. The default mode is asynchronous. The

connector does not support asynchronous delivery for business objects with the Retrieve, Exists, or Retrieve by Content verbs. Accordingly, for Retrieve, Exists, or Retrieve by Content verbs, the default mode is synchronous.

Create, update, and delete

Processing of business objects with create, update and delete verbs depends on whether the objects are issued asynchronously or synchronously.

Asynchronous delivery: This is the default delivery mode for business objects with Create, Update, and Delete verbs. A message is created from the business object using a data handler and then written to the output queue. If the message is delivered, the connector returns SUCCESS, else FAIL.

Note: The connector has no way of verifying whether the message is received or if action has been taken.

Synchronous delivery: If a ReplyToQueue has been defined in the connector-specific properties and a responseTimeout exists in the meta-object conversion properties for the business object, the connector issues a request in synchronous mode. The connector then waits for a response to verify that appropriate action was taken by the receiving application.

For WebSphere Integration Message Broker, the connector initially issues a message with a header as shown in Table 2.

Table 2. Request message descriptor header (MQMD)

Field	Description	Value
Format	Format name	Output format as defined in the meta-object conversion properties and truncated to 8 characters to meet IBM requirements (example: MQSTR)
MsgType	Message type	MQMT_DATAGRAM*
Report	Options for report message requested.	When a response message is expected, this field is populated as follows:MQRO_PAN* to indicate that a positive-action report is required if processing is successful.MQRO_NAN* to indicate that a negative-action report is required if processing fails.MQRO_COPY_MSG_ID_TO_CORREL_ID* to indicate that the correlation ID of the report generated should equal the message ID of the request originally issued.
ReplyToQ	Name of reply queue	When a response message is expected this field is populated with the value of connector property ReplyToQueue.
Persistence	Message persistence	MQPER_PERSISTENT*
Expiry	Message lifetime	MQEI_UNLIMITED*

* Indicates constant defined by IBM.

The message header described in Table 2 is followed by the message body. The message body is a business object that has been serialized using the data handler.

The Report field is set to indicate that both positive and negative action reports are expected from the receiving application. The thread that issued the message waits for a response message that indicates whether the receiving application was able to process the request.

When an application receives a synchronous request from the connector, it processes the business object and issues a report message as described in 3, 4, and 5.

Table 3. Response message descriptor header (MQMD)

Field	Description	Value
Format	Format name	Input format of busObj as defined in the conversion properties.
MsgType	Message type	MQMT_REPORT*

*Indicates constant defined by IBM.

Table 4. Population of response message

Verb	Feedback field	Message body
Create, update, or delete	SUCCESS	(Optional) A serialized business object reflecting changes.
	VALCHANGE	
	VALDUPES	(Optional) An error message.
	FAIL	

Table 5. WebSphere Integration Message Broker feedback codes and WebSphere business integration system response values

WebSphere Integration Message Broker feedback code	Equivalent WebSphere business integration system response*
MQFB_PAN or MQFB_APPL_FIRST	SUCCESS
MQFB_NAN or MQFB_APPL_FIRST + 1	FAIL
MQFB_APPL_FIRST + 2	VALCHANGE
MQFB_APPL_FIRST + 3	VALDUPES
MQFB_APPL_FIRST + 4	MULTIPLE_HITS
MQFB_APPL_FIRST + 5	FAIL_RETRIEVE_BY_CONTENT
MQFB_APPL_FIRST + 6	BO_DOES_NOT_EXIST
MQFB_APPL_FIRST + 7	UNABLE_TO_LOGIN (results in immediate termination of connector agent)
MQFB_APPL_FIRST + 8	APP_RESPONSE_TIMEOUT

*See the *Connector Development Guide* for details.

If the business object can be processed, the application creates a report message with the feedback field set to MQFB_PAN (or a specific WebSphere business integration system value). Optionally the application populates the message body with a serialized business object containing any changes. If the business object cannot be processed, the application creates a report message with the feedback field set to MQFB_NAN (or a specific WebSphere business integration system value) and then optionally includes an error message in the message body. In either case, the application sets the correlationID field of the message to the messageID of the connector message and issues it to the queue specified by the ReplyToQueue field.

Upon retrieval of a response message, the connector by default matches the correlationID of the response to the messageID of a request message. The connector then notifies the thread that issued the request. Depending on the feedback field of the response, the connector either expects a business object or an error message in the message body. If a business object was expected but the message body is not populated, the connector simply returns the same business object that was originally issued by InterChange Server for the Request operation.

If an error message was expected but the message body is not populated, a generic error message will be returned to InterChange Server along with the response code. However, you can also use a message selector to identify, filter and otherwise control how the adapter identifies the response message for a given request. This message selector capability is a JMS feature. It applies to synchronous request processing only and is described below.

Retrieve, exists and retrieve by content: Business objects with the Retrieve, Exists, and Retrieve By Content verbs support synchronous delivery only. The connector processes business objects with these verbs as it does for the synchronous delivery defined for create, update and delete. However, when using Retrieve, Exists, and Retrieve By Content verbs, the `responseTimeout` and `replyToQueue` are required. Furthermore, for Retrieve By Content and Retrieve verbs, the message body must be populated with a serialized business object to complete the transaction.

Table 6 shows the response messages for these verbs.

Table 6. Population of response message

Verb	Feedback field	Message body
Retrieve or RetrieveByContent	FAIL FAIL_RETRIEVE_BY_CONTENT	(Optional) An error message.
	MULTIPLE_HITS SUCCESS	A serialized business object.
Exist	FAIL	(Optional) An error message.
	SUCCESS	

Event processing

Figure 3 illustrates connector event processing. The `pollForEvents()` method retrieves the next applicable message from the input queue. The message is staged in the in-progress queue where it remains until processing is complete. Using the connector meta-object, the connector first determines whether the message type is supported. If so, the connector passes the message to the configured data handler, which converts the message into a business object. The verb that is set reflects the conversion properties established for the message type. The connector then determines whether the business object is subscribed to by a collaboration. If so, the `gotAppEvents()` method delivers the business object to the integration broker, and the message is removed from the in-progress queue.

For event notification, the connector detects events written to a queue by an application rather than a database trigger. An event occurs when an application or other MQ-capable software generates WebSphere MQ messages and stores them on the MQ message queue.

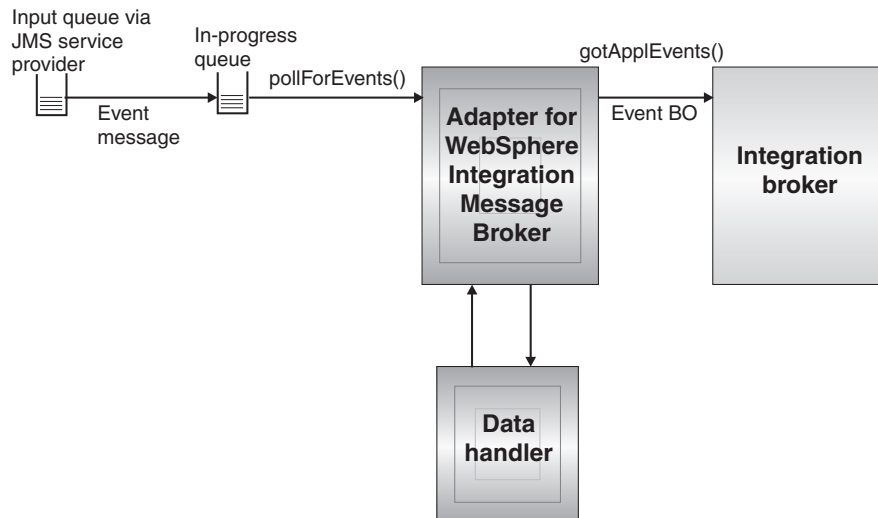


Figure 3. Application-connector communication method: Message return

Retrieval

The connector uses the `pollForEvents()` method to poll the MQ queue at regular intervals for messages. When the connector finds a message, it retrieves it from the MQ queue and examines it to determine its format. If the format has been defined in the connector meta-object, the connector uses the data handler to generate an appropriate business object with a verb. See “Overview of error handling” on page 39 for event failure scenarios.

The connector processes messages by first opening a transactional session to the input queue. This transactional approach allows for a small chance that a business object could be delivered to a collaboration twice due to the connector successfully submitting the business object but failing to commit the transaction in the queue. To avoid this problem, the connector moves all messages to an in-progress queue. There, the message is held until processing is complete. If the connector shuts down unexpectedly during processing, the message remains in the in-progress queue instead of being reinstated to the original input queue.

Note: Transactional sessions with a JMS service provider require that every requested action on a queue be performed and committed before events are removed from the queue. Accordingly, when the connector retrieves a message from the queue, it does not commit to the retrieval until three things occur: 1) The message has been converted to a business object; 2) the business object is delivered to InterChange Server by the `gotAppEvents()` method, and 3) a return value is received.

Recovery

Upon initialization, the connector checks the in-progress queue for messages that have not been completely processed, presumably due to a connector shutdown. The connector configuration property `InDoubtEvents` allows you to specify one of four options for handling recovery of such messages: fail on startup, reprocess, ignore, or log error.

Fail on startup: With the fail on startup option, if the connector finds messages in the in-progress queue during initialization, it logs an error and immediately shuts

down. It is the responsibility of the user or system administrator to examine the message and take appropriate action, either to delete these messages entirely or move them to a different queue.

Reprocess: With the reprocessing option, if the connector finds any messages in the in-progress queue during initialization, it processes these messages first during subsequent polls. When all messages in the in-progress queue have been processed, the connector begins processing messages from the input queue.

Ignore: With the ignore option, if the connector finds any messages in the in-progress queue during initialization, the connector ignores them, but does not shut down.

Log error: With the log error option, if the connector finds any messages in the in-progress queue during initialization, it logs an error but does not shut down.

Archiving

If the connector property `ArchiveQueue` is specified and identifies a valid queue, the connector places copies of all successfully processed messages in the archive queue. If `ArchiveQueue` is undefined, messages are discarded after processing. For more information on archiving unsubscribed or erroneous messages, see “Overview of error handling” on page 39.

Note: By JMS conventions, a retrieved message cannot be issued immediately to another queue. To enable archiving and re-delivery of messages, the connector first produces a second message that duplicates the body and the header (as applicable) of the original. To avoid conflicts with the JMS service provider, only JMS-required fields are duplicated. Accordingly, the `format` field is the only additional message property that is copied for messages that are archived or re-delivered.

Chapter 2. Installing the connector

- “Adapter environment”
- “Overview of installation tasks”
- “Verifying installation” on page 13

This chapter describes how to install and configure the connector and how to configure the message flows to work with the connector.

Overview of installation tasks

To install the adapter for WebSphere Integration Message Broker, you must perform the following tasks:

- **Install the integration broker** This task, which includes installing the WebSphere business integration system and starting the integration broker, is described in the installation documentation for your broker and operating system.
- **Install the adapter and related files** This task includes installing the files for the adapter from the software package onto your system. See “Installing the adapter and related files” on page 13

Before installing the adapter, you must understand the adapter environment. For further information, see “Adapter environment.”

In this chapter

The tasks described in this chapter are as follows:

Table 7. Installing the adapter: task roadmap

Task	Associated procedure(s) (see...)	For more information (see...)
Installing the adapter	“Installing the adapter and related files” on page 13	<i>Installation Guide for WebSphere Business Integration Adapters</i>
Verifying installation	“Verifying installation” on page 13	

Adapter environment

Before installing, configuring, and using the adapter, you must understand its environmental requirements:

- “Broker compatibility”
- “Adapter platforms” on page 12
- “Adapter dependencies” on page 12
- “Locale-dependent data” on page 13

Broker compatibility

The adapter framework that an adapter uses must be compatible with the version of the integration broker (or brokers) with which the adapter is communicating. The 2.6 version of the adapter for WebSphere Integration Message Broker is supported on the following adapter framework and integration brokers:

- Adapter framework: WebSphere Business Integration Adapter Framework, versions:

- 2.1
- 2.2
- 2.3.x
- 2.4
- Integration brokers:
 - WebSphere InterChange Server, versions:
 - 4.11
 - 4.2
 - 4.2.1
 - 4.2.x
 - WebSphere Application Server Enterprise, version 5.0.2, with WebSphere Studio Application Developer Integration Edition, version 5.0.1

See the Release Notes for any exceptions.

Note: For instructions on installing the integration broker and its prerequisites, see the following documentation.

For WebSphere InterChange Server (ICS), see the *System Installation Guide for UNIX or for Windows*.

For message brokers (WebSphere Integration Message Broker), see *Implementing Adapters with WebSphere Message Brokers*, and the installation documentation for the message broker. Some of this can be found at the following Web site: <http://www.ibm.com/software/integration/mqfamily/library/manualsa/>. For WebSphere Application Server, see *Implementing Adapters with WebSphere Application Server* and the documentation at: <http://www.ibm.com/software/webservers/appserv/library.html>

Adapter platforms

The adapter is supported on the following platforms:

- Windows 2000
- AIX 5.1, 5.2
- Solaris 8
- HP-UX 11i

Adapter dependencies

The adapter has the following software prerequisites and other dependencies:

- The connector supports interoperability with applications via WebSphere MQ, or WebSphere MQ 5.1, 5.2,¹ and 5.3. Accordingly, you must have one of these software releases installed.

Note: The adapter does not support Secure Socket Layers (SSL) in WebSphere MQ 5.3. For the WebSphere MQ software version appropriate to adapter framework-integration broker communication, see the Installation Guide for your platform (Windows/Unix).

- In addition, you must have the IBM WebSphere MQ Java client libraries.

1. If your environment implements the convert-on-the-get methodology for character-set conversions you must download the latest MA88 (JMS classes) from IBM. The patch level should be at least 5.2.2 (for WebSphere MQ version 5.2). Doing so may avoid unsupported encoding errors.

Locale-dependent data

The connector has been internationalized so that it can support double-byte character sets, and deliver message text in the specified language. When the connector transfers data from a location that uses one character code to a location that uses a different code set, it performs character conversion to preserve the meaning of the data.

The Java runtime environment within the Java Virtual Machine (JVM) represents data in the Unicode character code set. Unicode contains encoding for characters in most known character code sets (both single-byte and multibyte). Most components in the WebSphere business integration system are written in Java. Therefore, when data is transferred between most integration components, there is no need for character conversion.

To log error and informational messages in the appropriate language and for the appropriate country or territory, configure the `Locale` standard configuration property for your environment. For more information on configuration properties, see Appendix A, “Standard configuration properties for connectors,” on page 63.

Installing the adapter and related files

Before you begin: Review the requirements, dependencies, and broker compatibilities for the adapter. For further information see “Adapter environment” on page 11.

For information on installing WebSphere Business Integration adapter products, refer to the *Installation Guide for WebSphere Business Integration Adapters*, located in the WebSphere Business Integration Adapters Infocenter at the following site:

<http://www.ibm.com/websphere/integration/wbiadapters/infocenter>

Verifying installation

The sections below describe the paths and filenames of the product after installation and how to verify your adapter installation.

Overview of verifying installation on a Windows system

Before you begin: Install the adapter. The Installer copies the standard files associated with the adapter into your system. The utility installs the connector into the `ProductDir\connectors\WBIMB` directory, and adds a shortcut for the connector to the Start menu.

Steps for verifying installation on a Windows system

Perform the following step to verify adapter installation on a Windows system:

- Change to the directory where you installed the adapter `ProductDir\` and compare the contents to those listed in Table 8.

Table 8 describes the Windows file structure used by the adapter, and shows the files that are automatically installed when you choose to install the adapter through Installer.

Table 8. Installed Windows file structure for the adapter

Subdirectory of <i>ProductDir</i>	Description
connectors\WebSphereBIMessageBroker\CWebSphereBIMessageBroker.jar	Contains classes used by the WebSphere Business Integration Message Broker connector agent only
connectors\WebSphereBIMessageBroker\start_WebSphereBIMessageBroker.bat	The startup script for the connector
connectors\messages\WebSphereBIMessageBrokerConnector.txt	Message file for the connector
bin\Data\App\WebSphereBIMessageBrokerConnectorTemplate	Template file for the adapter definition
connectors\WebSphereBIMessageBroker\samples\LegacyItem\WBIMBConnector.cfg	Sample WBIMB adapter configuration file
connectors\WebSphereBIMessageBroker\samples\LegacyItem\PortConnector.cfg	Sample port connector configuration file
connectors\WebSphereBIMessageBroker\samples\LegacyItem\Sample_WBIMB_LegacyItem.xsd	Sample business object repository file
connectors\WebSphereBIMessageBroker\samples\LegacyItem\Sample_WBIMB_LegacyItem_XMLDoc.xsd	Sample business object repository file
connectors\WebSphereBIMessageBroker\samples\LegacyItem\Sample_WBIMB_MO_Config.xsd	Sample connector agent meta-object
connectors\WebSphereBIMessageBroker\samples\LegacyItem\Sample_WBIMB_MO_DataHandler.xsd	Sample data handler top level meta-object
connectors\WebSphereBIMessageBroker\samples\LegacyItem\Sample_WBIMB_MO_DataHandler_XMLConfig.xsd	Sample meta-object for xml datahandler configuration
connectors\WebSphereBIMessageBroker\samples\LegacyItem\LegacyItem.txt	Sample input file for using the samples
connectors\WebSphereBIMessageBroker\samples\LegacyItem\mqsiput.exe	Sample utility for WebSphere MQ to use with the samples
connectors\WebSphereBIMessageBroker\samples\LegacyItem\Sample_WBIMB_Project\ .project	Sample WBIMB project
connectors\WebSphereBIMessageBroker\samples\LegacyItem\Sample_WBIMB_Project\LocalDomain.configmgr	
connectors\WebSphereBIMessageBroker\samples\LegacyItem\Sample_WBIMB_Project\Sample_WBIMB_bar.bar	
connectors\WebSphereBIMessageBroker\samples\LegacyItem\MSG_FLOW_RPROJECT\ .project	Sample Message Flow project
connectors\WebSphereBIMessageBroker\samples\LegacyItem\MSG_FLOW_RPROJECT\AdjustFormat.esql	
connectors\WebSphereBIMessageBroker\samples\LegacyItem\MSG_FLOW_RPROJECT\Check_Color.esql	
connectors\WebSphereBIMessageBroker\samples\LegacyItem\MSG_FLOW_RPROJECT\From_LegacyApplication_to_WBI.msgflow	
connectors\WebSphereBIMessageBroker\samples\LegacyItem\MSG_FLOW_RPROJECT\From_WBI_to_LegacyApplication.msgflow	
connectors\WebSphereBIMessageBroker\samples\LegacyItem\MSG_FLOW_RPROJECT\Loopback.msgflow	

Note: All product pathnames are relative to the directory where the product is installed on your system.

Overview of verifying installation on a UNIX system

Before you begin: Install the adapter. The Installer copies the standard files associated with the adapter into your system. The utility installs the connector agent into the *ProductDir/connectors/WBIMB* directory.

Steps for verifying installation on a UNIX system

Perform the following step to verify adapter installation on a UNIX system:

- Change to the directory where you installed the adapter *ProductDir/* and compare the contents to those listed in Table 9.

Table 9 describes the UNIX file structure used by the adapter, and shows the files that are automatically installed when you choose to install the adapter through Installer.

Table 9. Installed UNIX file structure for the connector

Subdirectory of <i>ProductDir</i>	Description
connectors/WebSphereBIMessageBroker/CWWebSphereBIMessageBroker.jar	Contains classes used by the WebSphere Business Integration Message Broker connector agent only
connectors/WebSphereBIMessageBroker/start_WebSphereBIMessageBroker.sh	System startup script for the connector.
connectors/messages/WebSphereBIMessageBrokerConnector.txt	Message file for the connector
bin/Data/App/WebSphereBIMessageBrokerConnectorTemplate	Template file for the adapter definition
connectors/WebSphereBIMessageBroker/samples/LegacyItem/WBIMBConnector.cfg	Sample WBIMB adapter configuration file
connectors/WebSphereBIMessageBroker/samples/LegacyItem/PortConnector.cfg	Sample port connector configuration file
connectors/WebSphereBIMessageBroker/samples/LegacyItem/Sample_WBIMB_LegacyItem.xsd	Sample business object repository file
connectors/WebSphereBIMessageBroker/samples/LegacyItem/Sample_WBIMB_LegacyItem_XMLDoc.xsd	Sample business object repository file
connectors/WebSphereBIMessageBroker/samples/LegacyItem/Sample_WBIMB_MO_Config.xsd	Sample connector agent meta-object
connectors/WebSphereBIMessageBroker/samples/LegacyItem/Sample_WBIMB_MO_DataHandler.xsd	Sample datahandler top level meta-object
connectors/WebSphereBIMessageBroker/samples/LegacyItem/Sample_WBIMB_MO_DataHandler_XMLConfig.xsd	Sample meta-object for xml datahandler configuration
connectors/WebSphereBIMessageBroker/samples/LegacyItem/LegacyItem.txt	Sample input file for using the samples
connectors/WebSphereBIMessageBroker/samples/LegacyItem/mqsinput.exe	Sample utility for WebSphere MQ to use with the samples
connectors/WebSphereBIMessageBroker/samples/LegacyItem/Sample_WBIMB_Project/.project	Sample WBIMB project
connectors/WebSphereBIMessageBroker/samples/LegacyItem/Sample_WBIMB_Project/LocalDomain.configmgr	
connectors/WebSphereBIMessageBroker/samples/LegacyItem/Sample_WBIMB_Project/Sample_WBIMB_bar.bar	
connectors/WebSphereBIMessageBroker/samples/LegacyItem/MSG_FLOW_RPROJECT/.project	Sample Message Flow project
connectors/WebSphereBIMessageBroker/samples/LegacyItem/MSG_FLOW_RPROJECT/AdjustFormat.esql	
connectors/WebSphereBIMessageBroker/samples/LegacyItem/MSG_FLOW_RPROJECT/Check_Color.esql	
connectors/WebSphereBIMessageBroker/samples/LegacyItem/MSG_FLOW_RPROJECT/From_LegacyApplication_to_WBI.msgflow	
connectors/WebSphereBIMessageBroker/samples/LegacyItem/MSG_FLOW_RPROJECT/From_WBI_to_LegacyApplication.msgflow	
connectors/WebSphereBIMessageBroker/samples/LegacyItem/MSG_FLOW_RPROJECT/Loopback.msgflow	

Note: All product pathnames are relative to the directory where the product is installed on your system.

Chapter 3. Configuring the connector

- “Overview of Connector Configurator” on page 18
- “Starting Connector Configurator” on page 19
- “Creating a connector-specific property template” on page 20
- “Creating a new configuration file” on page 22
- “Using an existing file” on page 23
- “Setting the configuration file properties” on page 25
- “Saving your configuration file” on page 30
- “Changing a configuration file” on page 31
- “Completing the configuration” on page 31
- “Using Connector Configurator in a globalized environment” on page 31
- “Verifying a sample configuration” on page 33
- “Creating multiple connector instances” on page 32
- “Setting Queue Uniform Resource Identifiers (URI)” on page 33

This chapter describes how to use Connector Configurator to set configuration property values for your adapter.

Overview of configuring the connector

You configure the connector using Connector Configurator and other tools. You use Connector Configurator to do the following:

- Create a connector-specific property template for configuring your connector
- Create a configuration file
- Set properties in a configuration file

Note:

In this document, backslashes (\) are used as the convention for directory paths. For UNIX installations, substitute slashes (/) for backslashes and follow the conventions for each operating system.

You also use Connector Configurator when creating multiple instances of a connector.

See the task roadmap for additional configuration procedures covered in this chapter.

In this chapter

This tasks described in this chapter are as follows:

Table 10. Configuring the connector: task roadmap

Task	Associated procedure(s) (see...)	For more information (see...)
Starting Connector Configurator	“Starting Connector Configurator” on page 19	
Creating a connector-specific property template	“Creating a connector-specific property template” on page 20	

Table 10. Configuring the connector: task roadmap (continued)

Task	Associated procedure(s) (see...)	For more information (see...)
Creating a configuration file	"Creating a new configuration file" on page 22	
Setting configuration properties	"Setting the configuration file properties" on page 25	
Saving a configuration file	"Saving your configuration file" on page 30	
Changing a configuration file	"Changing a configuration file" on page 31	
Verifying the configuration	"Completing the configuration" on page 31	
Localizing a configuration	"Using Connector Configurator in a globalized environment" on page 31	
Creating multiple connector instances	"Creating multiple connector instances" on page 32	
Verifying a sample configuration	"Verifying a sample configuration" on page 33	
Setting Queue URIs	"Setting Queue Uniform Resource Identifiers (URI)" on page 33	
Using guaranteed event delivery	"Guaranteeing event delivery" on page 35	

Overview of Connector Configurator

Connector Configurator allows you to configure the connector component of your adapter for use with these integration brokers:

- WebSphere InterChange Server (ICS)
- WebSphere MQ Integrator, WebSphere MQ Integrator Broker, and WebSphere Business Integration Message Broker, collectively referred to as the WebSphere Message Brokers (WMQI)
- WebSphere Application Server (WAS)

You use Connector Configurator to:

- Create a **connector-specific property template** for configuring your connector.
- Create a **connector configuration file**; you must create one configuration file for each connector you install.
- Set properties in a configuration file.
You may need to modify the default values that are set for properties in the connector templates. You must also designate supported business object definitions and, with ICS, maps for use with collaborations as well as specify messaging, logging and tracing, and data handler parameters, as required.

The mode in which you run Connector Configurator, and the configuration file type you use, may differ according to which integration broker you are running. For example, if WMQI is your broker, you run Connector Configurator directly, and not from within System Manager (see "Running Configurator in stand-alone mode" on page 19).

Connector configuration properties include both standard configuration properties (the properties that all connectors have) and connector-specific properties (properties that are needed by the connector for a specific application or technology).

Because **standard properties** are used by all connectors, you do not need to define those properties from scratch; Connector Configurator incorporates them into your configuration file as soon as you create the file. However, you do need to set the value of each standard property in Connector Configurator.

The range of standard properties may not be the same for all brokers and all configurations. Some properties are available only if other properties are given a specific value. The Standard Properties window in Connector Configurator will show the properties available for your particular configuration.

For **connector-specific properties**, however, you need first to define the properties and then set their values. You do this by creating a connector-specific property template for your particular adapter. There may already be a template set up in your system, in which case, you simply use that. If not, follow the steps in “Creating a new template” on page 20 to set up a new one.

Note: Connector Configurator runs only in a Windows environment. If you are running the connector in a UNIX environment, use Connector Configurator in Windows to modify the configuration file and then copy the file to your UNIX environment.

Starting Connector Configurator

You can start and run Connector Configurator in either of two modes:

- Independently, in stand-alone mode
- From System Manager

Running Configurator in stand-alone mode

You can run Connector Configurator independently and work with connector configuration files, irrespective of your broker.

To do so:

- From **Start>Programs**, click **IBM WebSphere InterChange Server>IBM WebSphere Business Integration Tools>Connector Configurator**.
- Select **File>New>Connector Configuration**.
- When you click the pull-down menu next to **System Connectivity Integration Broker**, you can select ICS, WebSphere Message Brokers or WAS, depending on your broker.

You may choose to run Connector Configurator independently to generate the file, and then connect to System Manager to save it in a System Manager project (see “Completing a configuration file” on page 24.)

Running Configurator from System Manager

You can run Connector Configurator from System Manager.

To run Connector Configurator:

1. Open the System Manager.

2. In the System Manager window, expand the **Integration Component Libraries** icon and highlight **Connectors**.
3. From the System Manager menu bar, click **Tools>Connector Configurator**. The Connector Configurator window opens and displays a **New Connector** dialog box.
4. When you click the pull-down menu next to **System Connectivity Integration Broker**, you can select ICS, WebSphere Message Brokers or WAS, depending on your broker.

To edit an existing configuration file:

- In the System Manager window, select any of the configuration files listed in the Connector folder and right-click on it. Connector Configurator opens and displays the configuration file with the integration broker type and file name at the top.
- From Connector Configurator, select **File>Open**. Select the name of the connector configuration file from a project or from the directory in which it is stored.
- Click the Standard Properties tab to see which properties are included in this configuration file.

Creating a connector-specific property template

To create a configuration file for your connector, you need a connector-specific property template as well as the system-supplied standard properties.

You can create a brand-new template for the connector-specific properties of your connector, or you can use an existing connector definition as the template.

- To create a new template, see “Creating a new template” on page 20.
- To use an existing file, simply modify an existing template and save it under the new name. You can find existing templates in your `\WebSphereAdapters\bin\Data\App` directory.

Creating a new template

This section describes how you create properties in the template, define general characteristics and values for those properties, and specify any dependencies between the properties. Then you save the template and use it as the base for creating a new connector configuration file.

To create a template in Connector Configurator:

1. Click **File>New>Connector-Specific Property Template**.
2. The **Connector-Specific Property Template** dialog box appears.
 - Enter a name for the new template in the **Name** field below **Input a New Template Name**. You will see this name again when you open the dialog box for creating a new configuration file from a template.
 - To see the connector-specific property definitions in any template, select that template’s name in the **Template Name** display. A list of the property definitions contained in that template appears in the **Template Preview** display.
3. You can use an existing template whose property definitions are similar to those required by your connector as a starting point for your template. If you do not see any template that displays the connector-specific properties used by your connector, you will need to create one.

- If you are planning to modify an existing template, select the name of the template from the list in the **Template Name** table below **Select the Existing Template to Modify: Find Template**.
- This table displays the names of all currently available templates. You can also search for a template.

Specifying general characteristics

When you click **Next** to select a template, the **Properties - Connector-Specific Property Template** dialog box appears. The dialog box has tabs for General characteristics of the defined properties and for Value restrictions. The General display has the following fields:

- **General:**
Property Type
Updated Method
Description
- **Flags**
Standard flags
- **Custom Flag**
Flag

After you have made selections for the general characteristics of the property, click the **Value** tab.

Specifying values

The **Value** tab enables you to set the maximum length, the maximum multiple values, a default value, or a value range for the property. It also allows editable values. To do so:

1. Click the **Value** tab. The display panel for Value replaces the display panel for General.
2. Select the name of the property in the **Edit properties** display.
3. In the fields for **Max Length** and **Max Multiple Values**, enter your values.

To create a new property value:

1. Select the property in the **Edit properties** list and right-click on it.
2. From the dialog box, select **Add**.
3. Enter the name of the new property value and click OK. The value appears in the **Value** panel on the right.

The **Value** panel displays a table with three columns:

The **Value** column shows the value that you entered in the **Property Value** dialog box, and any previous values that you created.

The **Default Value** column allows you to designate any of the values as the default.

The **Value Range** shows the range that you entered in the **Property Value** dialog box.

After a value has been created and appears in the grid, it can be edited from within the table display.

To make a change in an existing value in the table, select an entire row by clicking on the row number. Then right-click in the **Value** field and click **Edit Value**.

Setting dependencies

When you have made your changes to the **General** and **Value** tabs, click **Next**. The **Dependencies - Connector-Specific Property Template** dialog box appears.

A dependent property is a property that is included in the template and used in the configuration file *only if* the value of another property meets a specific condition. For example, `PollQuantity` appears in the template only if `JMS` is the transport mechanism and `DuplicateEventElimination` is set to `True`.

To designate a property as dependent and to set the condition upon which it depends, do this:

1. In the **Available Properties** display, select the property that will be made dependent.
2. In the **Select Property** field, use the drop-down menu to select the property that will hold the conditional value.
3. In the **Condition Operator** field, select one of the following:
 - == (equal to)
 - != (not equal to)
 - > (greater than)
 - < (less than)
 - >= (greater than or equal to)
 - <=(less than or equal to)
4. In the **Conditional Value** field, enter the value that is required in order for the dependent property to be included in the template.
5. With the dependent property highlighted in the **Available Properties** display, click an arrow to move it to the **Dependent Property** display.
6. Click **Finish**. Connector Configurator stores the information you have entered as an XML document, under `\data\app` in the `\bin` directory where you have installed Connector Configurator.

Creating a new configuration file

When you create a new configuration file, you must name it and select an integration broker.

- In the System Manager window, right-click on the **Connectors** folder and select **Create New Connector**. Connector Configurator opens and displays the **New Connector** dialog box.
- In stand-alone mode: from Connector Configurator, select **File>New>Connector Configuration**. In the New Connector window, enter the name of the new connector.

You also need to select an integration broker. The broker you select determines the properties that will appear in the configuration file. To select a broker:

- In the **Integration Broker** field, select `ICS`, `WebSphere Message Brokers` or `WAS connectivity`.
- drop-down the remaining fields in the **New Connector** window, as described later in this chapter.

Creating a configuration file from a connector-specific template

Once a connector-specific template has been created, you can use it to create a configuration file:

1. Click **File>New>Connector Configuration**.
2. The **New Connector** dialog box appears, with the following fields:
 - **Name**

Enter the name of the connector. Names are case-sensitive. The name you enter must be unique, and must be consistent with the file name for a connector that is installed on the system.

Important: Connector Configurator does not check the spelling of the name that you enter. You must ensure that the name is correct.
 - **System Connectivity**

Click ICS or WebSphere Message Brokers or WAS.
 - **Select Connector-Specific Property Template**

Type the name of the template that has been designed for your connector. The available templates are shown in the **Template Name** display. When you select a name in the Template Name display, the **Property Template Preview** display shows the connector-specific properties that have been defined in that template.

Select the template you want to use and click **OK**.
3. A configuration screen appears for the connector that you are configuring. The title bar shows the integration broker and connector name. You can fill in all the field values to drop-down the definition now, or you can save the file and complete the fields later.
4. To save the file, click **File>Save>To File** or **File>Save>To Project**. To save to a project, System Manager must be running.

If you save as a file, the **Save File Connector** dialog box appears. Choose *.cfg as the file type, verify in the File Name field that the name is spelled correctly and has the correct case, navigate to the directory where you want to locate the file, and click **Save**. The status display in the message panel of Connector Configurator indicates that the configuration file was successfully created.

Important: The directory path and name that you establish here must match the connector configuration file path and name that you supply in the startup file for the connector.
5. To complete the connector definition, enter values in the fields for each of the tabs of the Connector Configurator window, as described later in this chapter.

Using an existing file

You may have an existing file available in one or more of the following formats:

- A connector definition file.

This is a text file that lists properties and applicable default values for a specific connector. Some connectors include such a file in a `\repository` directory in their delivery package (the file typically has the extension `.txt`; for example, `CN_XML.txt` for the XML connector).
- An ICS repository file.

Definitions used in a previous ICS implementation of the connector may be available to you in a repository file that was used in the configuration of that connector. Such a file typically has the extension `.in` or `.out`.
- A previous configuration file for the connector.

Such a file typically has the extension `*.cfg`.

Although any of these file sources may contain most or all of the connector-specific properties for your connector, the connector configuration file will not be complete until you have opened the file and set properties, as described later in this chapter.

To use an existing file to configure a connector, you must open the file in Connector Configurator, revise the configuration, and then resave the file.

Follow these steps to open a *.txt, *.cfg, or *.in file from a directory:

1. In Connector Configurator, click **File>Open>From File**.
2. In the **Open File Connector** dialog box, select one of the following file types to see the available files:
 - Configuration (*.cfg)
 - ICS Repository (*.in, *.out)
Choose this option if a repository file was used to configure the connector in an ICS environment. A repository file may include multiple connector definitions, all of which will appear when you open the file.
 - All files (*.*)
Choose this option if a *.txt file was delivered in the adapter package for the connector, or if a definition file is available under another extension.
3. In the directory display, navigate to the appropriate connector definition file, select it, and click **Open**.

Follow these steps to open a connector configuration from a System Manager project:

1. Start System Manager. A configuration can be opened from or saved to System Manager only if System Manager has been started.
2. Start Connector Configurator.
3. Click **File>Open>From Project**.

Completing a configuration file

When you open a configuration file or a connector from a project, the Connector Configurator window displays the configuration screen, with the current attributes and values.

The title of the configuration screen displays the integration broker and connector name as specified in the file. Make sure you have the correct broker. If not, change the broker value before you configure the connector. To do so:

1. Under the **Standard Properties** tab, select the value field for the BrokerType property. In the drop-down menu, select the value ICS, WMQI, or WAS.
2. The Standard Properties tab will display the properties associated with the selected broker. You can save the file now or complete the remaining configuration fields, as described in “Specifying supported business object definitions” on page 27..
3. When you have finished your configuration, click **File>Save>To Project** or **File>Save>To File**.

If you are saving to file, select *.cfg as the extension, select the correct location for the file and click **Save**.

If multiple connector configurations are open, click **Save All to File** to save all of the configurations to file, or click **Save All to Project** to save all connector configurations to a System Manager project.

Before it saves the file, Connector Configurator checks that values have been set for all required standard properties. If a required standard property is missing a value, Connector Configurator displays a message that the validation failed. You must supply a value for the property in order to save the configuration file.

Setting the configuration file properties

When you create and name a new connector configuration file, or when you open an existing connector configuration file, Connector Configurator displays a configuration screen with tabs for the categories of required configuration values.

Connector Configurator requires values for properties in these categories for connectors running on all brokers:

- Standard Properties
- Connector-specific Properties
- Supported Business Objects
- Trace/Log File values
- Data Handler (applicable for connectors that use JMS messaging with guaranteed event delivery)

Note: For connectors that use JMS messaging, an additional category may display, for configuration of data handlers that convert the data to business objects.

For connectors running on **ICS**, values for these properties are also required:

- Associated Maps
- Resources
- Messaging (where applicable)

Important: Connector Configurator accepts property values in either English or non-English character sets. However, the names of both standard and connector-specific properties, and the names of supported business objects, must use the English character set only.

Standard properties differ from connector-specific properties as follows:

- Standard properties of a connector are shared by both the application-specific component of a connector and its broker component. All connectors have the same set of standard properties. These properties are described in Appendix A of each adapter guide. You can change some but not all of these values.
- Application-specific properties apply only to the application-specific component of a connector, that is, the component that interacts directly with the application. Each connector has application-specific properties that are unique to its application. Some of these properties provide default values and some do not; you can modify some of the default values. The installation and configuration chapters of each adapter guide describe the application-specific properties and the recommended values.

The fields for **Standard Properties** and **Connector-Specific Properties** are color-coded to show which are configurable:

- A field with a grey background indicates a standard property. You can change the value but cannot change the name or remove the property.

- A field with a white background indicates an application-specific property. These properties vary according to the specific needs of the application or connector. You can change the value and delete these properties.
- Value fields are configurable.
- The **Update Method** field is displayed for each property. It indicates whether a component or agent restart is necessary to activate changed values. You cannot configure this setting.

Setting standard connector properties

To change the value of a standard property:

1. Click in the field whose value you want to set.
2. Either enter a value, or select one from the drop-down menu if it appears.
3. After entering all the values for the standard properties, you can do one of the following:
 - To discard the changes, preserve the original values, and exit Connector Configurator, click **File>Exit** (or close the window), and click **No** when prompted to save changes.
 - To enter values for other categories in Connector Configurator, select the tab for the category. The values you enter for **Standard Properties** (or any other category) are retained when you move to the next category. When you close the window, you are prompted to either save or discard the values that you entered in all the categories as a whole.
 - To save the revised values, click **File>Exit** (or close the window) and click **Yes** when prompted to save changes. Alternatively, click **Save>To File** from either the File menu or the toolbar.

Setting application-specific configuration properties

For application-specific configuration properties, you can add or change property names, configure values, delete a property, and encrypt a property. The default property length is 255 characters.

1. Right-click in the top left portion of the grid. A pop-up menu bar will appear. Click **Add** to add a property. To add a child property, right-click on the parent row number and click **Add child**.
2. Enter a value for the property or child property.
3. To encrypt a property, select the **Encrypt** box.
4. Choose to save or discard changes, as described for “Setting standard connector properties.”

The Update Method displayed for each property indicates whether a component or agent restart is necessary to activate changed values.

Important: Changing a preset application-specific connector property name may cause a connector to fail. Certain property names may be needed by the connector to connect to an application or to run properly.

Encryption for connector properties

Application-specific properties can be encrypted by selecting the **Encrypt** check box in the Connector-specific Properties window. To decrypt a value, click to clear the **Encrypt** check box, enter the correct value in the **Verification** dialog box, and click **OK**. If the entered value is correct, the value is decrypted and displays.

The adapter user guide for each connector contains a list and description of each property and its default value.

If a property has multiple values, the **Encrypt** check box will appear for the first value of the property. When you select **Encrypt**, all values of the property will be encrypted. To decrypt multiple values of a property, click to clear the **Encrypt** check box for the first value of the property, and then enter the new value in the **Verification** dialog box. If the input value is a match, all multiple values will decrypt.

Update method

Refer to the descriptions of update methods found in the *Standard configuration properties for connectors* appendix, under “Setting and updating property values” on page 64.

Specifying supported business object definitions

Use the **Supported Business Objects** tab in Connector Configurator to specify the business objects that the connector will use. You must specify both generic business objects and application-specific business objects, and you must specify associations for the maps between the business objects.

Note: Some connectors require that certain business objects be specified as supported in order to perform event notification or additional configuration (using meta-objects) with their applications. For more information, see the *Connector Development Guide for C++* or the *Connector Development Guide for Java*.

If ICS is your broker

To specify that a business object definition is supported by the connector, or to change the support settings for an existing business object definition, click the **Supported Business Objects** tab and use the following fields.

Business object name: To designate that a business object definition is supported by the connector, with System Manager running:

1. Click an empty field in the **Business Object Name** list. A drop-down list displays, showing all the business object definitions that exist in the System Manager project.
2. Click on a business object to add it.
3. Set the **Agent Support** (described below) for the business object.
4. In the File menu of the Connector Configurator window, click **Save to Project**. The revised connector definition, including designated support for the added business object definition, is saved to an ICL (Integration Component Library) project in System Manager.

To delete a business object from the supported list:

1. To select a business object field, click the number to the left of the business object.
2. From the **Edit** menu of the Connector Configurator window, click **Delete Row**. The business object is removed from the list display.
3. From the **File** menu, click **Save to Project**.

Deleting a business object from the supported list changes the connector definition and makes the deleted business object unavailable for use in this implementation

of this connector. It does not affect the connector code, nor does it remove the business object definition itself from System Manager.

Agent support: If a business object has Agent Support, the system will attempt to use that business object for delivering data to an application via the connector agent.

Typically, application-specific business objects for a connector are supported by that connector's agent, but generic business objects are not.

To indicate that the business object is supported by the connector agent, check the **Agent Support** box. The Connector Configurator window does not validate your Agent Support selections.

Maximum transaction level: The maximum transaction level for a connector is the highest transaction level that the connector supports.

For most connectors, Best Effort is the only possible choice.

You must restart the server for changes in transaction level to take effect.

If a WebSphere Message Broker is your broker

If you are working in stand-alone mode (not connected to System Manager), you must enter the business object name manually.

If you have System Manager running, you can select the empty box under the **Business Object Name** column in the **Supported Business Objects** tab. A combo box appears with a list of the business object available from the Integration Component Library project to which the connector belongs. Select the business object you want from the list.

The **Message Set ID** is an optional field for WebSphere Business Integration Message Broker 5.0, and need not be unique if supplied. However, for WebSphere MQ Integrator and Integrator Broker 2.1, you must supply a unique **ID**.

If WAS is your broker

When WebSphere Application Server is selected as your broker type, Connector Configurator does not require message set IDs. The **Supported Business Objects** tab shows a **Business Object Name** column only for supported business objects.

If you are working in stand-alone mode (not connected to System Manager), you must enter the business object name manually.

If you have System Manager running, you can select the empty box under the Business Object Name column in the Supported Business Objects tab. A combo box appears with a list of the business objects available from the Integration Component Library project to which the connector belongs. Select the business object you want from this list.

Associated maps (ICS only)

Each connector supports a list of business object definitions and their associated maps that are currently active in WebSphere InterChange Server. This list appears when you select the **Associated Maps** tab.

The list of business objects contains the application-specific business object which the agent supports and the corresponding generic object that the controller sends

to the subscribing collaboration. The association of a map determines which map will be used to transform the application-specific business object to the generic business object or the generic business object to the application-specific business object.

If you are using maps that are uniquely defined for specific source and destination business objects, the maps will already be associated with their appropriate business objects when you open the display, and you will not need (or be able) to change them.

If more than one map is available for use by a supported business object, you will need to explicitly bind the business object with the map that it should use.

The **Associated Maps** tab displays the following fields:

- **Business Object Name**

These are the business objects supported by this connector, as designated in the **Supported Business Objects** tab. If you designate additional business objects under the Supported Business Objects tab, they will be reflected in this list after you save the changes by choosing **Save to Project** from the **File** menu of the Connector Configurator window.

- **Associated Maps**

The display shows all the maps that have been installed to the system for use with the supported business objects of the connector. The source business object for each map is shown to the left of the map name, in the **Business Object Name** display.

- **Explicit**

In some cases, you may need to explicitly bind an associated map.

Explicit binding is required only when more than one map exists for a particular supported business object. When ICS boots, it tries to automatically bind a map to each supported business object for each connector. If more than one map takes as its input the same business object, the server attempts to locate and bind one map that is the superset of the others.

If there is no map that is the superset of the others, the server will not be able to bind the business object to a single map, and you will need to set the binding explicitly.

To explicitly bind a map:

1. In the **Explicit** column, place a check in the check box for the map you want to bind.
2. Select the map that you intend to associate with the business object.
3. In the **File** menu of the Connector Configurator window, click **Save to Project**.
4. Deploy the project to ICS.
5. Reboot the server for the changes to take effect.

Resources (ICS)

The **Resource** tab allows you to set a value that determines whether and to what extent the connector agent will handle multiple processes concurrently, using connector agent parallelism.

Not all connectors support this feature. If you are running a connector agent that was designed in Java to be multi-threaded, you are advised not to use this feature, since it is usually more efficient to use multiple threads than multiple processes.

Messaging (ICS)

The messaging properties are available only if you have set MQ as the value of the `DeliveryTransport` standard property and ICS as the broker type. These properties affect how your connector will use queues.

Setting trace/log file values

When you open a connector configuration file or a connector definition file, Connector Configurator uses the logging and tracing values of that file as default values. You can change those values in Connector Configurator.

To change the logging and tracing values:

1. Click the **Trace/Log Files** tab.
2. For either logging or tracing, you can choose to write messages to one or both of the following:
 - To console (STDOUT):
Writes logging or tracing messages to the STDOUT display.

Note: You can only use the STDOUT option from the **Trace/Log Files** tab for connectors running on the Windows platform.

- To File:
Writes logging or tracing messages to a file that you specify. To specify the file, click the directory button (ellipsis), navigate to the preferred location, provide a file name, and click **Save**. Logging or tracing message are written to the file and location that you specify.

Note: Both logging and tracing files are simple text files. You can use the file extension that you prefer when you set their file names. For tracing files, however, it is advisable to use the extension `.trace` rather than `.trc`, to avoid confusion with other files that might reside on the system. For logging files, `.log` and `.txt` are typical file extensions.

Data handlers

The data handlers section is available for configuration only if you have designated a value of JMS for `DeliveryTransport` and a value of JMS for `ContainerManagedEvents`. Not all adapters make use of data handlers.

See the descriptions under `ContainerManagedEvents` in Appendix A, Standard Properties, for values to use for these properties. For additional details, see the *Connector Development Guide for C++* or the *Connector Development Guide for Java*.

Saving your configuration file

When you have finished configuring your connector, save the connector configuration file. Connector Configurator saves the file in the broker mode that you selected during configuration. The title bar of Connector Configurator always displays the broker mode (ICS, WMQI or WAS) that it is currently using.

The file is saved as an XML document. You can save the XML document in three ways:

- From System Manager, as a file with a `*.con` extension in an Integration Component Library, or
- In a directory that you specify.

- In stand-alone mode, as a file with a *.cfg extension in a directory folder. By default, the file is saved to \WebSphereAdapters\bin\Data\App.
- You can also save it to a WebSphere Application Server project if you have set one up.

For details about using projects in System Manager, and for further information about deployment, see the following implementation guides:

- For ICS: *Implementation Guide for WebSphere InterChange Server*
- For WebSphere Message Brokers: *Implementing Adapters with WebSphere Message Brokers*
- For WAS: *Implementing Adapters with WebSphere Application Server*

Changing a configuration file

You can change the integration broker setting for an existing configuration file. This enables you to use the file as a template for creating a new configuration file, which can be used with a different broker.

Note: You will need to change other configuration properties as well as the broker mode property if you switch integration brokers.

To change your broker selection within an existing configuration file (optional):

- Open the existing configuration file in Connector Configurator.
- Select the **Standard Properties** tab.
- In the **BrokerType** field of the Standard Properties tab, select the value that is appropriate for your broker.
When you change the current value, the available tabs and field selections on the properties screen will immediately change, to show only those tabs and fields that pertain to the new broker you have selected.

Completing the configuration

After you have created a configuration file for a connector and modified it, make sure that the connector can locate the configuration file when the connector starts up.

To do so, open the startup file used for the connector, and verify that the location and file name used for the connector configuration file match exactly the name you have given the file and the directory or path where you have placed it.

Using Connector Configurator in a globalized environment

Connector Configurator is globalized and can handle character conversion between the configuration file and the integration broker. Connector Configurator uses native encoding. When it writes to the configuration file, it uses UTF-8 encoding.

Connector Configurator supports non-English characters in:

- All value fields
- Log file and trace file path (specified in the **Trace/Log files** tab)

The drop list for the CharacterEncoding and Locale standard configuration properties displays only a subset of supported values. To add other values to the drop list, you must manually modify the \Data\Std\stdConnProps.xml file in the product directory.

For example, to add the locale en_GB to the list of values for the Locale property, open the stdConnProps.xml file and add the line in boldface type below:

```
<Property name="Locale"
isRequired="true"
updateMethod="component restart">
  <ValidType>String</ValidType>
  <ValidValues>
    <Value>ja_JP</Value>
    <Value>ko_KR</Value>
    <Value>zh_CN</Value>
    <Value>zh_TW</Value>
    <Value>fr_FR</Value>
    <Value>de_DE</Value>
    <Value>it_IT</Value>
    <Value>es_ES</Value>
    <Value>pt_BR</Value>
    <Value>en_US</Value>
    <Value>en_GB</Value>
  </ValidValues>
  <DefaultValue>en_US</DefaultValue>
</Property>
```

Creating multiple connector instances

This topic contains an overview and procedure for creating multiple connector instances.

Overview of creating multiple connector instances

Creating multiple instances of a connector is in many ways the same as creating a custom connector. You can set your system up to create and run multiple instances of a connector by following the steps below. You must:

- Create a new directory for the connector instance
- Make sure you have the requisite business object definitions
- Create a new connector definition file
- Create a new start-up script

Steps for creating a new directory

You must create a connector directory for each connector instance. This connector directory should be named:

```
ProductDir\connectors\connectorInstance
```

where connectorInstance uniquely identifies the connector instance.

If the connector has any connector-specific meta-objects, you must create a meta-object for the connector instance. If you save the meta-object as a file, create this directory and store the file here:

```
ProductDir\repository\connectorInstance
```

Steps for creating business object definitions

If the business object definitions for each connector instance do not already exist within the project, you must create them.

1. If you need to modify business object definitions that are associated with the initial connector, copy the appropriate files and use Business Object Designer to import them. You can copy any of the files for the initial connector. Just rename them if you make changes to them.
2. Files for the initial connector should reside in the following directory:

ProductDir\repository\initialConnectorInstance

Any additional files you create should be in the appropriate connectorInstance subdirectory of ProductDir\repository.

Steps for creating a connector definition

You create a configuration file (connector definition) for the connector instance in Connector Configurator. To do so:

1. Copy the initial connector's configuration file (connector definition) and rename it.
2. Make sure each connector instance correctly lists its supported business objects (and any associated meta-objects).
3. Customize any connector properties as appropriate.

Steps for creating a start-up script

To create a startup script:

1. Copy the initial connector's startup script and name it to include the name of the connector directory:
dirname
2. Put this startup script in the connector directory you created in "Steps for creating a new directory" on page 32.
3. Create a startup script shortcut (Windows only).
4. Copy the initial connector's shortcut text and change the name of the initial connector (in the command line) to match the name of the new connector instance.

You can now run both instances of the connector on your integration server at the same time.

For more information on creating custom connectors, refer to the *Connector Development Guide for C++ or for Java*.

Verifying a sample configuration

To verify a sample configuration, do the following:

- See Appendix C, "Tutorial," on page 87. The tutorial uses samples that are shipped with the adapter so you can configure and run a sample scenario quickly.

Setting Queue Uniform Resource Identifiers (URI)

You can use Uniform Resource Identifiers to designate queues and to establish or modify values for those queues. You do this when specifying values for the connector specific properties that define queues.

To set queue URIs, do the following:

- Using Connector Configurator, specify a connector-specific queue using the syntax described below.

Queue URI syntax: The URI for a queue begins with the sequence queue:// followed by:

- The name of the queue manager on which the queue resides
- Another /

- The name of the queue
- Optionally, a list of name-value pairs to set the remaining queue properties.

For example, the following URI connects to queue IN on queue manager `crossworlds.queue.manager` and causes all messages to be sent as WebSphere MQ messages with priority 5.

```
queue://crossworlds.queue.manager/IN?targetClient=1&persistence=5
```

Table 11 shows property names for queue URIs.

Table 11. WebSphere Business Integration Message Broker queue URI properties

Property name	Description	Values
expiry	Lifetime of the message in milliseconds.	0 = unlimited.
priority	Priority of the message.	positive integers = timeout (in ms). 0-9, where 1 is the highest priority. A value of -1 means that the property should be determined by the configuration of the queue. A value of -2 specifies that the connector can use its own default value.
persistence	Whether the message should be 'hardened' to disk.	1 = non-persistent 2 = persistent
CCSID	Character set of the destination.	A value of -1 means that the property should be determined by the configuration of the queue. A value of -2 specifies that the connector can use its own default value. Integers - valid values listed in base WebSphere Business Integration Message Broker documentation. This value should match that of the CCSID connector-specific configuration property. See "CCSID" on page 83.
targetClient	Whether the receiving application is JMS compliant or not.	0 = JMS (MQRFH2 header) 1 = MQ (MQMD header only)
encoding	How to represent numeric fields.	An integer value as described in the base WebSphere Business Integration Message Broker documentation.

Note: The connector has no control of the character set (CCSID) or encoding attributes of data in MQ messages. Because data conversion is applied as the data is retrieved from or delivered to the message buffer, the connector relies upon the IBM WebSphere MQ implementation of JMS to convert data (see the IBM MQSeries Java client library documentation). Accordingly, these conversions should be bi-directionally equivalent to those performed by the native MQSeries, or WebSphere MQ, API using option `MQGMO_CONVERT`. The connector has no control over differences or failures in the conversion process. The connector can retrieve message data of any CCSID or encoding supported by WebSphere MQ without additional modifications. To deliver a message of a specific CCSID or encoding, the output queue must be a fully-qualified URI and specify values for CCSID and encoding. The connector passes this information to WebSphere MQ, which (via the JMS API) uses the information when encoding data for `MQMessage` delivery. Often, lack of support for CCSID and encoding can be resolved by downloading the most recent version of the IBM MQSeries Java client library from IBM's web site. If problems specific to CCSID and encoding

persist, contact WebSphere business integration system Technical Support to discuss the possibility of using an alternate Java Virtual Machine to run the connector.

Guaranteeing event delivery

The guaranteed-event-delivery feature enables the connector framework to ensure that events are never lost and never sent twice between the connector's event store, the JMS event store, and the destination's JMS queue. To become JMS-enabled, you must configure the `connectorDeliveryTransport` standard property to JMS. Thus configured, the connector uses the JMS transport and all subsequent communication between the connector and the integration broker occurs through this transport. The JMS transport ensures that the messages are eventually delivered to their destination. Its role is to ensure that once a transactional queue session starts, the messages are cached there until a commit is issued; if a failure occurs or a rollback is issued, the messages are discarded.

Note: Without use of the guaranteed-event-delivery feature, a small window of possible failure exists between the time that the connector publishes an event (when the connector calls the `gotAppEvent()` method within its `pollForEvents()` method) and the time it updates the event store by deleting the event record (or perhaps updating it with an "event posted" status). If a failure occurs in this window, the event has been sent but its event record remains in the event store with an "in progress" status. When the connector restarts, it finds this event record still in the event store and sends it, resulting in the event being sent twice.

You can configure the guaranteed-event-delivery feature for a JMS-enabled connector with, or without, a JMS event store. To configure the connector for guaranteed event delivery, see instructions in the *Connector Development Guide for Java*.

If connector framework cannot deliver the business object to the ICS integration broker, then the object is placed on a `FaultQueue` (instead of `UnsubscribedQueue` and `ErrorQueue`) and generates a status indicator and a description of the problem. `FaultQueue` messages are written in MQRFH2 format.

Chapter 4. Running the connector

- “Configuring startup files”
- “Starting the connector” on page 38
- “Stopping the connector” on page 39
- “Overview of error handling” on page 39
- “Overview of tracing” on page 41

This chapter describes how to configure connector startup files and how to start and stop the connector.

Overview of running the connector

You are ready to run the connector if you have done the following:

- Installed the connector and related files
- Configured business objects and meta-objects
- Configured a data handler
- Configured the connector

In this chapter

This chapter covers the following tasks.

Table 12. Running the adapter: task roadmap

Task	Associated procedure(s) (see...)	For more information (see...)
Configuring startup files	“Configuring startup files”	<i>Connector Development Guide</i>
Starting the connector	“Starting the connector” on page 38	
Stopping the connector	“Stopping the connector” on page 39	“Overview of mapping data handlers to input queues” on page 52

Configuring startup files

Before you start the connector for WebSphere Business Integration Message Broker, you must configure the startup file.

Steps for configuring startup files for Windows platforms

To complete the configuration of the connector for Windows platforms, you must modify the start_WBIMB.bat file:

1. Open the start_WBIMB.bat file.
2. Scroll to the section beginning with “Set the directory containing your WebSphereMQ Java client libraries,” and specify the location of your WebSphere MQ Java client libraries.

Steps for configuring startup files for UNIX platforms

To complete the configuration of the connector for UNIX platforms, you must modify the start_WBIMB.sh file:

1. Open the `start_WBIMB.sh` file.
2. Scroll to the section beginning with “Set the directory containing your WebSphere MQ Java client libraries,” and specify the location of your WebSphere MQ Java client libraries.

Starting the connector

A connector must be explicitly started using its **connector start-up script**. The startup script should reside in the connector’s runtime directory:

`ProductDir\connectors\connName`

where *connName* identifies the connector. The name of the startup script depends on the operating-system platform, as Table 13 shows.

Table 13. Startup scripts for a connector

Operating system	Startup script
UNIX-based systems	<code>connector_manager_connName</code>
Windows	<code>start_connName.bat</code>

You can invoke the connector startup script in any of the following ways:

- On Windows systems, from the **Start** menu
 Select **Programs>IBM WebSphere Business Integration Adapters>Adapters>Connectors**. By default, the program name is “IBM WebSphere Business Integration Adapters”. However, it can be customized. Alternatively, you can create a desktop shortcut to your connector.
 - From the command line
 - On Windows systems:
`start_connName connName brokerName [-cconfigFile]`
 - On UNIX-based systems:
`connector_manager_connName -start`
 where *connName* is the name of the connector and *brokerName* identifies your integration broker, as follows:
 - For WebSphere InterChange Server, specify for *brokerName* the name of the ICS instance.
 - For WebSphere message brokers (WebSphere MQ Integrator, WebSphere MQ Integrator Broker, or WebSphere Business Integration Message Broker) or WebSphere Application Server, specify for *brokerName* a string that identifies the broker.
- Note:** For a WebSphere message broker or WebSphere Application Server on a Windows system, you *must* include the `-c` option followed by the name of the connector configuration file. For ICS, the `-c` is optional.
- From Adapter Monitor (WebSphere Business Integration Adapters product only), which is launched when you start System Manager
 You can load, activate, deactivate, pause, shutdown or delete a connector using this tool.
 - From System Monitor (WebSphere InterChange Server product only)
 You can load, activate, deactivate, pause, shutdown or delete a connector using this tool.

- On Windows systems, you can configure the connector to start as a Windows service. In this case, the connector starts when the Windows system boots (for an Auto service) or when you start the service through the Windows Services window (for a Manual service).

For more information on how to start a connector, including the command-line startup options, refer to one of the following documents:

- For WebSphere InterChange Server, refer to the *System Administration Guide*.
- For WebSphere message brokers, refer to *Implementing Adapters with WebSphere Message Brokers*.
- For WebSphere Application Server, refer to *Implementing Adapters with WebSphere Application Server*.

Stopping the connector

The way to stop a connector depends on the way that the connector was started, as follows:

- If you started the connector from the command line, with its connector startup script:
 - On Windows systems, invoking the startup script creates a separate “console” window for the connector. In this window, type “Q” and press Enter to stop the connector.
 - On UNIX-based systems, connectors run in the background so they have no separate window. Instead, run the following command to stop the connector:
`connector_manager_connName -stop`
 where *connName* is the name of the connector.
- From Adapter Monitor (WebSphere Business Integration Adapters product only), which is launched when you start System Manager
 You can load, activate, deactivate, pause, shutdown or delete a connector using this tool.
- From System Monitor (WebSphere InterChange Server product only)
 You can load, activate, deactivate, pause, shutdown or delete a connector using this tool.
- On Windows systems, you can configure the connector to start as a Windows service. In this case, the connector stops when the Windows system shuts down.

Overview of error handling

All error messages generated by the connector are stored in a message file named `MQSIV2Connector.txt`. (The name of the file is determined by the `LogFile` standard connector configuration property.) Each error has an error number followed by the error message:

```
Message number
Message text
```

The connector handles specific errors as described in the following sections.

Application timeout

The error message `ABON_APPRESPONSETIMEOUT` is returned when:

- The connector cannot establish a connection to the JMS service provider during message retrieval.

- The connector successfully converts a business object to a message but cannot deliver it the outgoing queue due to connection loss.
- The connector issues a message but times out waiting for a response for a business object with conversion property `TimeoutFatal` equal to `True`.
- The connector receives a response message with a return code equal to `APP_RESPONSE_TIMEOUT` or `UNABLE_TO_LOGIN`.

Unsubscribed business object

The connector delivers a message to the queue specified by the `UnsubscribedQueue` property if:

- The connector retrieves a message that is associated with an unsubscribed business object or when a `NO_SUBSCRIPTION_FOUND` code is returned by the `gotAppEvent()` method.
- The connector retrieves a message but cannot associate the text in the `FORMAT` field with a business object name.

Note: If the `UnsubscribedQueue` is not defined, unsubscribed messages will be discarded.

Connector not active

When the `gotAppEvent()` method returns a `CONNECTOR_NOT_ACTIVE` code, the `pollForEvents()` method returns an `APP_RESPONSE_TIMEOUT` code and the event remains in the `InProgress` queue.

Data handler conversion

If the data handler fails to convert a message to a business object, or if a processing error occurs that is specific to the business object (as opposed to the JMS provider), the message is delivered to the queue specified by `ErrorQueue`. If the `ErrorQueue` is not defined, messages that cannot be processed due to errors will be discarded.

If the data handler fails to convert a business object to a message, `BON_FAIL` is returned.

JMS properties

If a JMS property cannot be read from or written to a message, the connector logs an error and the request or event fails. If you do not specify a `ReplyToQueue` or it cannot be accessed, the connector logs an error and the request fails. If a `CorrelationID` is invalid or cannot be set, the connector logs an error and the request fails.

In all cases, the message logged is from the connector message file.

Overloading input formats

When retrieving a message, the connector normally matches the input format to one specific business object and verb combination. The connector then passes the business object name and the contents of the message to the data handler. This allows the data handler to verify that the message contents correspond to the business object that the user expects.

If, however, the same input format is defined for more than one business object, the connector will be unable to determine which business object the data

represents before passing it to the data handler. In such cases, the connector passes the message contents only to the data handler and then looks up conversion properties based on the business object that is generated. Accordingly, the data handler must determine the business object based on the message content alone.

If the verb on the generated business object is not set, the connector searches for conversion properties defined for this business object with any verb. If only one set of conversion properties is found, the connector assigns the specified verb. If more properties are found, the connector fails the message because it is unable to distinguish among the verbs.

Overview of tracing

Tracing is an optional debugging feature you can turn on to closely follow connector behavior. Trace messages, by default, are written to STDOUT. See the connector configuration properties in *Chapter 2* for more on configuring trace messages. For more information on tracing, including how to enable and set it, see the *Connector Development Guide for Java*.

What follows is recommended content for connector trace messages.

- | | |
|----------------|---|
| Level 0 | This level is used for trace messages that identify the connector version. |
| Level 1 | Use this level for trace messages that provide key information on each business object processed or record each time a polling thread detects a new message in an input queue. |
| Level 2 | Use this level for trace messages that log each time a business object is posted to InterChange Server, either from <code>gotAppIEvent()</code> or <code>executeCollaboration()</code> . |
| Level 3 | Use this level for trace messages that provide information regarding data-format (for example, XML)-to-business-object and business-object-to-data-format conversions or provide information about the delivery of the message to the output queue. |
| Level 4 | Use this level for trace messages that identify when the connector enters or exits a function. |
| Level 5 | Use this level for trace messages that indicate connector initialization, represent statements executed in the application, indicate whenever a message is taken off of or put onto a queue, or record business object dumps. |

Chapter 5. Creating objects

- “Overview of creating objects”
- “Creating business objects”
- “Modifying business objects” on page 45
- “Creating meta-objects” on page 47

This chapter describes what you must do to create and modify business objects and meta-objects. Both are required for the connector to function properly.

Overview of creating objects

You must create definitions for two kinds of objects:

- **business objects** These represent business entities (an employee or catalog item) or data transactions (create, update, delete) and also contain the application-specific instructions to process the data. The connector comes with sample business objects only and these are for use with the tutorial. You must build business object definitions for the connector.
- **meta-objects** A configuration meta-object defines the data formats, queues, mapping, message header information, and response times that govern how the connector exchanges business objects and messages. The connector comes with a sample meta-object only. You can modify this sample for use with your adapter, or you can create your own meta-objects. You must configure a meta-object with one or more properties or the connector will not function properly.

In this chapter

The tasks described in this chapter are as follows:

Table 14. Creating objects: task roadmap

Task	Associated procedure(s) (see...)	For more information (see...)
Creating business objects	“Creating business objects”	<i>Business Object Development Guide</i>
Modifying business objects	“Modifying business objects” on page 45	<i>Business Object Development Guide</i>
Creating meta-objects	“Creating meta-objects” on page 47	“Overview of creating static meta-objects” on page 50; “Overview of creating dynamic child meta-objects” on page 52
Mapping data handlers to input queues	“Steps for mapping data handlers to input queues” on page 52	“Overview of mapping data handlers to input queues” on page 52

Creating business objects

This topic contains an overview and a procedure for creating definitions for business objects.

Overview of creating business objects

After installing the connector, you must create definitions for business objects. There are no requirements regarding the structure of the business objects other

than those imposed by the configured data handler and by attributes in the meta-object. When you decide on the data format for your connector, you must configure a suitable data handler and generate conforming business objects.

The WBI Message Broker provides native support for XML messages. In fact, the adapter for WBI Message Broker is configured, by default, for an XML data handler. This means that the adapter uses the XML data handler for business object-to-message and message-to-business object conversion.

Note: You can use any available non-XML data handler, or build a custom data handler, to support message and business object requirements. You then configure the data handler for use with the connector, and modify the message flows accordingly. For further information on available and custom data handlers, see the *Data Handler Guide*. For further information on configuring a data handler for use with the adapter and modifying the message flows, see Chapter 6, “Configuring a data handler,” on page 57.

To construct business objects for use with the XML data handler, you use the XML Object Discovery Agent (ODA). The XML ODA generates business object definitions for an XML document based on either its DTD or schema document. These business objects can then be used with the adapter. Samples shipped with the WBI Message Broker adapter provide files that are configured to use the XML data handler for business object conversion.

Note: The business objects that the connector processes can have any name allowed by the integration broker. For more on naming conventions for InterChange Server, see *Naming IBM WebSphere InterChange Server Components*.

Steps for creating business objects

Before you begin: You must identify the data format (XML, for example) for the messages and business objects that the connector will exchange.

To create business objects for the connector perform the following steps:

1. Use an **Object Discovery Agent (ODA)** (if available) to generate the business object definitions. For example, to create business objects for a connector configured to exchange XML messages, you would use the XML ODA. For further information, see the *Data Handler Guide*.
2. Use **Business Object Designer**, as needed, to modify or add to information generated by the ODA. For further information, see the *Business Object Development Guide*.

Note: If an ODA is not available for your data format, you can create definitions for business objects by using Business Object Designer. For further information, see the *Business Object Development Guide*.

After creating business object definitions, you then use **Connector Configurator** to add them to the list of those supported by the connector. For further information on using Connector Configurator, see Chapter 6, “Configuring a data handler,” on page 57.

Modifying business objects

You can modify business objects to take advantage of processing capabilities. When you modify business objects, you use Business Object Designer. For further information, see the *Business Object Development Guide*.

This topic contains an overview and procedure for modifying a business object to enable a synchronous request processing feature.

Overview of filtering response messages with a message selector

Upon receiving a business object for synchronous request processing, the connector checks for the presence of a `response_selector` string in the application-specific information of the verb. If the `response_selector` is undefined, the connector identifies response messages using the correlation ID as described in “Retrieve, exists and retrieve by content” on page 7.

If `response_selector` is defined, the connector expects a name-value pair with the following syntax:

```
response_selector=JMSCorrelationID LIKE 'selectorstring'
```

The message `selectorstring` must uniquely identify a response and its values be enclosed in single quotes as shown in the example below:

```
response_selector=JMSCorrelationID LIKE 'Oshkosh'
```

In the above example, after issuing the request message, the adapter would monitor the `ReplyToQueue` for a response message with a `correlationID` equal to “Oshkosh.” The adapter would retrieve the first message that matches this message selector and then dispatch it as the response.

Steps for filtering response messages with a message selector

To filter a response message with a message selector, do the following:

1. Launch **Business Object Designer**
2. Open the business object that you want to convert for synchronous message delivery.
3. In the application-specific information of the verb, specify `response_selector=JMSCorrelationID LIKE 'selectorstring'` where `selectorstring` uniquely identifies a response. When the application returns a response with the `selectorstring` you specified as a `CorrelationID`, the connector identifies it as the response to the synchronous request. The connector then calls the data handler to convert it to a response business object, and returns it to the requesting collaboration.

Note: You can specify multiple `selectorstrings`. You can also specify special characters, reference attributes in (static and dynamic) meta-objects, and enable swapping of `selectorstrings`. For illustration, see the examples below.

Examples: Optionally, the adapter performs run-time substitutions enabling you to generate unique message selectors for each request. Instead of a message selector,

you specify a placeholder in the form of an integer surrounded by curly braces, for example: '{1}'. You then follow with a colon and a list of comma-separated attributes to use for the substitution. The integer in the placeholder acts as an index to the attribute to use for the substitution. For example, the following message selector:

```
response_selector=JMSCorrelationID LIKE '{1}': MyDynamicMO.CorrelationID
```

would inform the adapter to replace {1} with the value of the first attribute following the selector (in this case the attribute named CorrelationId of the child-object named MyDynamicMO. If attribute CorrelationID had a value of 123ABC, the adapter would generate and use a message selector created with the following criteria:

```
JMSCorrelation LIKE '123ABC'
```

to identify the response message.

You can also specify multiple substitutions such as the following:

```
response_selector=PrimaryId LIKE '{1}' AND AddressId LIKE '{2}' :  
PrimaryId, Address[4].AddressId
```

In this example, the adapter would substitute {1} with the value of attribute PrimaryId from the top-level business object and {2} with the value of AddressId from the 5th position of child container object Address. With this approach, you can reference any attribute in the business object and meta-object in the response message selector. For more information on how deep retrieval is performed using Address[4].AddressId, see JCDK API manual (getAttribute method)

An error is reported at run-time when any of the following occurs:

- If you specify a non-integer value between the '{}' symbols
- If you specify an index for which no attribute is defined
- If the attribute specified does not exist in the business or meta-object
- If the syntax of the attribute path is incorrect

For example, if you include the literal value '{' or '}' in the message selector, you can use '{{' or ''}' respectively. You can also place these characters in the attribute value, in which case the first '"' is not needed. Consider the following example using the escape character: response_selector=JMSCorrelation LIKE '{1}' and CompanyName='A{P': MyDynamicMO.CorrelationID

The connector would resolve this message selector as follows:

```
JMSCorrelationID LIKE '123ABC' and CompanyName='A{P'
```

When the connector encounters special characters such as '{', '}', ':', or ';' in attribute values, they are inserted directly into the query string. This allows you to include special characters in a query string that also serve as application-specific information delimiters.

The next example illustrates how a literal string substitution is extracted from the attribute value:

```
response_selector=JMSCorrelation LIKE '{1}' and CompanyName='A{P':  
MyDynamicMO.CorrelationID
```

If MyDynamicMO.CorrelationID contained the value {A:B}C;D, the connector would resolve the message selector as follows: JMSCorrelationID LIKE '{A:B}C;D' and CompanyName='A{P'

For more information on the response selector code, see JMS 1.0.1 specifications.

Creating meta-objects

This topic contains an overview and procedures for creating meta-objects.

The connector uses meta-object entries to determine which business object to associate with a message. The type of business object and verb used in processing an event message is based on the FORMAT field contained in the WebSphere MQ message header. You construct a meta-object attribute to store the business object name and verb to associate with the WebSphere MQ message header FORMAT field text. Meta-object attributes also contain message processing guidelines.

When a message is retrieved from the input queue, the connector looks up the business object name associated with the FORMAT text field. The message, along with the business object name, is then passed to the data handler. If a business object is successfully populated with message content, the connector checks to see if it is subscribed, and then delivers it to the integration broker using the `gotAppEvents()` method.

The connector for WebSphere Business Integration Message Broker can recognize and read two kinds of meta-objects:

- a static connector meta-object
- a dynamic child meta-object

The attribute values of the dynamic child meta-object duplicate and override those of the static meta-object.

When deciding upon which meta-object will work best for your implementation, consider the following:

- **Static meta-object**
 - Useful if all meta-data for different messages is fixed and can be specified at configuration time.
 - Limits you to specifying values by business-object type. For example, all Customer-type objects must be sent to the same destination.
- **Dynamic meta-object**
 - Gives business processes access to information in message headers
 - Allows business processes to change processing of messages at run-time, regardless of business type. For example, a dynamic meta-object would allow you to specify a different destination for every Customer-type object sent to the adapter.
 - Requires changes to the structure of supported business objects—such changes may require changes to maps and business processes.
 - Requires changes to custom data handlers.

Meta-object properties

Table 15 provides a complete list of properties supported in meta-objects. Refer to these properties when implementing meta-objects. Your meta object should have one or more of the properties shown in Table 15.

Not all properties are available in both static and dynamic meta-objects. Nor are all properties readable from or writable to the message header. See the appropriate sections on event and request processing in Chapter 1, “Overview,” on page 1, to determine how a specific property is interpreted and used by the connector.

Table 15. WBI Message Broker adapter meta-object properties

Property name	Definable in static meta-object	Definable in dynamic meta-object	Description
DataHandlerConfigMO	Yes	Yes	Meta-object passed to data handler to provide configuration information. If specified in the static meta-object, this will override the value specified in the DataHandlerConfigMO connector property. Use this meta-object property when different data handlers are required for processing different business object types. Use the dynamic child meta-object for request processing when the data format may be dependent on the actual business data. The specified business object must be supported by the connector agent. See the description in Appendix B, “Connector-specific properties for the WBI Message Broker adapter,” on page 81.
DataHandlerMimeType	Yes	Yes	Allows you to request a data handler based on a particular MIME type. If specified in the meta-object, this will override the value specified in the DataHandlerMimeType connector property. Use this meta-object property when different data handlers are required for processing different business object types. Use the dynamic child meta-object for request processing when the data format might be dependent on the actual business data. The business object specified in DataHandlerConfigMO should have an attribute that corresponds to the value of this property. See the description in Appendix B, “Connector-specific properties for the WBI Message Broker adapter,” on page 81.
DataHandlerClassName	Yes	Yes	See the description in Appendix B, “Connector-specific properties for the WBI Message Broker adapter,” on page 81.

Table 15. WBI Message Broker adapter meta-object properties (continued)

Property name	Definable in static meta-object	Definable in dynamic meta-object	Description
InputFormat	Yes	Yes	Format or type of inbound (event) message to associate with the given business object. This value helps identify the message content and is specified by the application that generated the message. When a message is retrieved and is in this format, it is converted to the given business object, if possible. If this format is not specified for a business object, the connector does not handle subscription deliveries for the given business object. Do not set this property using default meta-object conversion properties; its value is used to match incoming messages to business objects. The field that the connector considers as defining the format in the message can be user-defined via the connector-specific property MessageFormatProperty.
OutputFormat	Yes	Yes	Format to be populated in outbound messages. If the OutputFormat is not specified, the input format is used, if available.
InputQueue	Yes	Yes	The input queue that the connector polls to detect new messages. This property is used to match incoming messages to business objects only. Do not set this property using default conversion properties; its value is used to match incoming messages to business objects. Note: The InputQueue property in the connector-specific properties defines which queues the adapter polls. This is the only property that the adapter uses to determine which queues to poll. In the static MO, the InputQueue property and the InputFormat property can serve as criteria for the adapter to map a given message to a specific business object. To implement this feature, you would use connector-specific properties to configure multiple input destinations and optionally map different data handlers to each one based on the input formats of incoming messages. For information, see “Overview of mapping data handlers to input queues” on page 52
OutputQueue	Yes	Yes	Queue to which messages derived from the given business object are delivered.
ResponseTimeout	Yes	Yes	Indicates the length of time in milliseconds to wait before timing out when waiting for a response in synchronous request processing. The connector returns SUCCESS immediately without waiting for a response if this is left undefined or with a value less than zero.
TimeoutFatal	Yes	Yes	Used in synchronous request processing to trigger the connector to return an error message if a response is not received. If this property is True, the connector returns APPRESPONSETIMEOUT to the broker when a response is not received within the time specified by ResponseTimeout. If this property is undefined or set to False, then on a response timeout the connector fails the request but does not terminate. Default = False.

Table 15. WBI Message Broker adapter meta-object properties (continued)

Property name	Definable in static meta-object	Definable in dynamic meta-object	Description
<i>Below are fields mapping specifically to the JMS message header. For specific explanations, interpretation of values, and more, see the JMS API specification. JMS providers may interpret some fields differently so also check your JMS provider documentation for any deviations.</i>			
ReplyToDestination		Yes	Destination to which a response message for a request is to be sent.
Type		Yes	Type of message. Generally user-definable, depending on JMS provider.
MessageID		Yes	Unique ID for message (JMS provider specific).
CorrelationID	Yes	Yes	Used in response messages to indicate the ID of the request message that initiated this response.
Delivery Mode	Yes	Yes	Specifies whether the message is persisted or not in the MOM system. Acceptable values: 1=non-persistent 2=persistent Other values, depending on the JMS provider, may be available.
Priority		Yes	Numeric priority of message. Acceptable values: 0 through 9 inclusive (low to high priority).
Destination		Yes	Current or last (if removed) location of message in MOM system.
Expiration		Yes	Time-to-live of message.
Redelivered		Yes	Indicates that the JMS provider most likely attempted to deliver the message to the client earlier but receipt was not acknowledged.
Timestamp		Yes	Time message was handed off to JMS provider.
UserID		Yes	Identity of the user sending the message.
AppID		Yes	Identity of the application sending the message.
DeliveryCount		Yes	Number of delivery attempts.
GroupID		Yes	Identity of the message group.
GroupSeq		Yes	Sequence of this message in the message group specified in GroupID.
JMSProperties		Yes	See "JMS properties" on page 54.

Overview of creating static meta-objects

The WebSphere Business Integration Message Broker configuration meta-object consists of a list of conversion properties defined for different business objects. To view a sample static meta-object, launch Business Object Designer and open the following sample that is shipped with the adapter:

`connectors\WBIMB\samples\LegacyItem\Sample_WBIMB_MO_Config.xsd`

The connector supports at most one static meta-object at any given time. You implement a static meta-object by specifying its name for connector property `ConfigurationMetaObject`

The structure of the static meta-object is such that each attribute represents a single business object and verb combination and all the meta-data associated with processing that object. The name of each attribute should be the name of the business object type and verb separated by an underscore, such as `Customer_Create`. The attribute application-specific information should consist of one or more semicolon-delimited name-value pairs representing the meta-data properties you want to specify for this unique object-verb combination.

Table 16. Static meta-object structure

Attribute name	Application-specific text
<business object type>_<verb>	property=value;property=value;...
<business object type>_<verb>	property=value;property=value;...

For example, consider the following meta-object:

Table 17. Sample static meta-object structure

Attribute name	Application-specific information
Customer_Create	OutputFormat=CUST;OutputDestination=QueueA
Customer_Update	OutputFormat=CUST;OutputDestination=QueueB
Order_Create	OutputFormat=ORDER;OutputDestination=QueueC

The meta-object in this sample informs the connector that when it receives a request business object of type Customer with verb Create, to convert it to a message with format CUST and then to place it in destination QueueA. If the customer object instead had verb Update, the message would be placed in QueueB. If the object type was Order and had verb Create, the connector would convert and deliver it with format ORDER to QueueC. Any other business object passed to the connector would be treated as unsubscribed.

Optionally, you may name one attribute Default and assign to it one or more properties in the ASI. For all attributes contained in the meta-object, the properties of the default attribute are combined with those of the specific object-verb attributes. This is useful when you have one or more properties to apply universally (regardless of object-verb combination). In the following example, the connector would consider object-verb combinations of Customer_Create and Order_Create as having OutputDestination=QueueA in addition to their individual meta-data properties:

Table 18. Sample static meta-object structure

Attribute name	Application-specific information
Default	OutputDestination=QueueA
Customer_Update	OutputFormat=CUST
Order_Create	OutputFormat=ORDER

Table 15 on page 48 describes the properties that you can specify as application-specific information in the static meta-object.

Note: If a static meta object is not specified, the connector is unable to map a given message format to a specific business object type during polling. When this is the case, the connector passes the message text to the configured data handler without specifying a business object. If the data handler cannot create a business object based on the text alone, the connector reports an error indicating that this message format is unrecognized.

Steps for creating static meta-objects

To implement a static meta-object, do the following:

1. Launch Business Object Designer. For further information, see the *Business Object Development Guide*.

2. Open the sample meta-object
connectors\WBIMB\samples\LegacyItem\Sample_WBIMB_MO_Config.xsd.
3. Edit the attributes and ASI to reflect your requirements, referring to Table 15 on page 48 and then save the meta-object file.
4. Specify the name of this meta-object file as the value of the connector property ConfigurationMetaObject.

Overview of mapping data handlers to input queues

You can use the InputQueue property in the application-specific information of the static meta-object to associate a data handler with an input queue. This feature is useful when dealing with multiple trading partners who have different formats and conversion requirements.

Steps for mapping data handlers to input queues

To map a data handler to an InputQueue, do the following:

1. Use connector-specific properties (see “InputQueue” on page 84) to configure one or more input queues.
2. Open the static meta-object in **Business Object Designer**.
3. For each input queue in the static meta-object, specify the queue manager and input queue name as well as data handler class name and mime type in the application-specific information.

For example, the following attribute in a static meta-object associates a data handler with an InputQueue named CompReceipts:

```
[Attribute]
Name = Cust_Create
Type = String
Cardinality = 1
MaxLength = 1
IsKey = false
IsForeignKey = false
IsRequired = false
AppSpecificInfo = InputQueue=//queue.manager/CompReceipts;DataHandlerClassName=
com.crossworlds.DataHandlers.WBIMB.disposition_notification;DataHandlerMimeType=
message/
disposition_notification
IsRequiredServerBound = false
[End]
```

Overview of creating dynamic child meta-objects

If it is difficult or unfeasible to specify the necessary metadata through a static meta-object, the connector can optionally accept meta-data delivered at run-time for each business object instance.

Dynamic meta-objects allow you to change the meta-data used by the connector to process a business object on a per-request basis during request processing, and to retrieve information about an event message during event processing.

The connector recognizes and reads conversion properties from a dynamic meta-object that is added as a child to the top-level business object passed to the connector. The attribute values of the dynamic child meta-object duplicate the conversion properties that you can specify via the static meta-object that is used to configure the connector.

Since dynamic child meta object properties override those found in static meta-objects, if you specify a dynamic child meta-object, you need not include a connector property that specifies the static meta-object. Accordingly, you can use a dynamic child meta-object independently of the static meta-object and vice-versa.

Table 15 on page 48 describes the properties that you can specify as application-specific information in the dynamic meta-object.

The following attributes, which reflect JMS and WebSphere MQ header properties, are recognized in the dynamic meta-object.

Table 19. Dynamic meta-object header attributes

Header attribute name	Mode	Corresponding JMS header
CorrelationID	Read/Write	JMSCorrelationID
ReplyToQueue	Read/Write	JMSReplyTo
DeliveryMode	Read/Write	JMSDeliveryMode
Priority	Read/Write	JMSPriority
Destination	Read	JMSDestination
Expiration	Read	JMSExpiration
MessageID	Read	JMSMessageID
Redelivered	Read	JMSRedelivered
TimeStamp	Read	JMSTimeStamp
Type	Read	JMSType
UserID	Read	JMSXUserID
AppID	Read	JMSXAppID
DeliveryCount	Read	JMSXDeliveryCount
GroupID	Read	JMSXGroupID
GroupSeq	Read	JMSXGroupSeq
JMSProperties	Read/Write	

Read-only attributes are read from a message header during event notification and written to the dynamic meta-object. These properties also populate the dynamic MO when a response message is issued during request processing. Read/write attributes are set on message headers created during request processing. During event notification, read/write attributes are read from message headers to populate the dynamic meta-object.

The structure of the dynamic meta-object is such that each attribute represents a single metadata property and value: meta-object property name =meta-object property value

Note: All standard IBM WebSphere data handlers are designed to ignore this dynamic meta-object attribute by recognizing the `cw_mo_tag`. You must do the same when developing custom data handlers for use with the adapter.

Population of the dynamic child meta-object during polling

In order to provide collaborations with more information regarding messages retrieved during polling, the connector populates specific attributes of the dynamic meta-object, if already defined for the business object created.

Table Table 20 shows how a dynamic child meta-object might be structured for polling.

Table 20. Dynamic child meta-object structure for polling

Property name	Sample value
InputFormat	CUST_IN
InputQueue	MYInputQueue
OutputFormat	CxIgnore
OutputQueue	CxIgnore
ResponseTimeout	CxIgnore
TimeoutFatal	CxIgnore

As shown in Table 20, you can define additional attributes, `Input_Format` and `InputQueue`, in a dynamic child meta-object. The `Input_Format` is populated with the format of the message retrieved, while the `InputQueue` attribute contains the name of the queue from which a given message has been retrieved. If these properties are not defined in the child meta-object, they will not be populated.

Example scenario:

- The connector retrieves a message with the format `CUST_IN` from the queue `MyInputQueue`.
- The connector converts this message to a Customer business object and checks the application-specific text to determine if a meta-object is defined.
- If so, the connector creates an instance of this meta-object and populates the `InputQueue` and `InputFormat` attributes accordingly, then publishes the business object to available collaborations.

JMS headers and dynamic child meta-object attributes

You can add attributes to a dynamic meta-object to gain more information about, and more control over, the message transport. This section describes these attributes and how they affect event notification and request processing.

JMS properties: Unlike other attributes in the dynamic meta-object, `JMSProperties` must define a single-cardinality child object. Every attribute in this child object must define a single property to be read/written in the variable portion of the JMS message header as follows:

1. The name of the attribute has no semantic value.
2. The type of the attribute should always be `String` regardless of the JMS property type.
3. The application-specific information of the attribute must contain two name-value pairs defining the name and format of the JMS message property to which the attribute maps. The name is user-definable. The value type must be one of the following:
 - `Boolean`
 - `String`
 - `Int`
 - `Float`
 - `Double`
 - `Long`
 - `Short`
 - `Byte`

The table below shows application-specific information properties that you must define for attributes in the `JMSProperties` object.

Table 21. Application-specific information for JMS property attributes

Attribute	Possible values	ASI	Comments
Name	Any valid JMS property name (valid = compatible with type defined in ASI)	<code>name=<JMS property name>;type=<JMS property type></code>	Some vendors reserve certain properties to provide extended functionality. In general, users should not define custom properties that begin with JMS unless they are seeking access to these vendor-specific features.
Type	String	<code>type=<see comments></code>	This is the type of the JMS property. The JMS API provides a number of methods for setting values in the JMS Message: <code>setIntProperty</code> , <code>setLongProperty</code> , <code>setStringProperty</code> , etc. The type of the JMS property specified here dictates which of these methods is used for setting the property value in the message.

In the example below, a `JMSProperties` child object is defined for the `Customer` object to allow access to the user-defined fields of the message header:

```
Customer (ASI = cw_mo_conn=MetaData)
  -- Id
  -- FirstName
  -- LastName
  -- ContactInfo
  -- MetaData
    -- OutputFormat = CUST
    -- OutputDestination = QueueA
    -- JMSProperties
      -- RoutingCode = 123 (ASI= name=RoutingCode;type=Int)
      -- Dept = FD (ASI= name=RoutingDept;type=String)
```

To illustrate another example, Figure 4 shows attribute `JMSProperties` in the dynamic meta-object and definitions for four properties in the JMS message header: `ID`, `GID`, `RESPONSE` and `RESPONSE_PERSIST`. The application-specific information of the attributes defines the name and type of each. For example, attribute `ID` maps to JMS property `ID` of type `String`).

	Pos	Name	Type	Key	Req'd	Card	App Spec Info
1	1	JMSProperties	TeamCenter_JMS_Properties	<input type="checkbox"/>	<input type="checkbox"/>	1	
1.1	1.1	ID	String	<input checked="" type="checkbox"/>	<input checked="" type="checkbox"/>		name=ID,type=String
1.2	1.2	GID	String	<input type="checkbox"/>	<input checked="" type="checkbox"/>		name=GID,type=String
1.3	1.3	RESPONSE	String	<input type="checkbox"/>	<input checked="" type="checkbox"/>		name=RESPONSE,type=Boolean
1.4	1.4	RESP_PERSIST	String	<input type="checkbox"/>	<input checked="" type="checkbox"/>		name=RESPONSE_PERSIST,type=Boolean
1.5	1.5	ObjectEventId	String	<input type="checkbox"/>	<input type="checkbox"/>		
2	2	OutputFormat	String	<input checked="" type="checkbox"/>	<input type="checkbox"/>		

Figure 4. JMS properties attribute in a dynamic meta-object

Steps for creating a dynamic meta-object

To implement a dynamic meta-object, do the following:

1. Launch **Business Object Designer**. For further information, see the *Business Object Development Guide*.
2. Open the top-level business object whose processing you want to the dynamic meta-object to influence.
3. Add the dynamic meta-object as a child to your top-level object and include the name-value pair `cw_mo_conn=<MO attribute>` in your top-level object ASI where `<MO attribute>` is the name of the attribute in your top-level object representing the dynamic meta-object. For example:

```
Customer (ASI = cw_mo_conn=MetaData)
  -- Id
  -- FirstName
  -- LastName
  -- ContactInfo
  -- MetaData
    -- OutputFormat = CUST
    -- OutputDestination = QueueA
```

Upon receipt of a request populated as shown above, the connector would convert the Customer object to a message with format CUST and then put the message in queue QueueA.

4. Save the top-level business object.

Note: Business objects can use the same or different dynamic meta-object or none at all.

Chapter 6. Configuring a data handler

- “Overview of configuring the data handler”
- “Specifying the data handler”
- “Modifying a message flow” on page 58

This chapter describes how to configure a data handler.

Overview of configuring the data handler

The data handler is a pivotal component in the connector. The connector calls the data handler to transform business objects into messages and to transform messages into business objects.

The information in the connector-specific data handler properties plays a crucial role in these transformations. You configure this information after you install the product files, but before startup.

Note: You can also map configured data handlers to input queues. For further information and a procedure, see “Overview of mapping data handlers to input queues” on page 52.

In this chapter

This tasks described in this chapter are as follows:

Table 22. Configuring the data handler: task roadmap

Task	Associated procedure(s) (see...)	For more information (see...)
Specifying a data handler	“Specifying the data handler”	
Modifying a message flow	“Modifying a message flow” on page 58	Your message broker documentation

Specifying the data handler

This topic contains an overview and procedure for specifying the data handler.

Overview of specifying the data handler

You configure a data handler by specifying values for the following connector-specific configuration properties:

- DataHandlerClassName
- DataHandlerConfigMO
- DataHandlerMimeType

For further information on these properties, see [XREF](#)

Steps for specifying the data handler

Before you begin: If you are using an XML data handler, you can simply use the default values for the data handler connector configuration properties. All three of

these properties—DataHandlerClassName, DataHandlerConfigMO, and DataHandlerMimeType—are, by default, configured for use with an XML data handler.

To configure a data handler, do the following:

1. Using **Connector Configurator**, click the **Connector-Specific Properties** tab.
2. Specify a property for DataHandlerClassName that corresponds to the data handler you wish to configure.
3. Specify a property for DataHandlerConfigMO that corresponds to the data handler you wish to configure.
4. Specify a property for DataHandlerMimeType that corresponds to the data handler you wish to configure.
5. Apply the properties in Connector Configurator.

Note: Specifying values for these properties in a static or dynamic meta-object takes precedence over values specified in these connector-specific properties. For further information, see “Meta-object properties” on page 48.

Modifying a message flow

This topic contains an overview and procedure for modifying a message flow.

Overview of modifying a message flow

When a WebSphere Business Integration adapter uses a message broker, the adapter uses WebSphere MQ message flows to process and route data. A single message flow, defined for each queue, processes all messages placed on that queue. Using the Message Brokers Toolkit, you can configure a message flow to specify different processing steps for each type of message it is expected to handle.

You must modify the message flow so that each incoming message is converted to the format that corresponds to the configured data handler. This conversion must occur before the message is issued to the input queue of the connector. The procedure below shows how to modify a message flow for an XML configuration. To modify a message flow for other data formats, substitute the formats mime type for XML in the third bullet of step 2.

Steps for modifying a message flow for an XML configuration

Before you begin: Configure the XML data handler.

To modify a message flow for XML, do the following:

1. Launch **Message Brokers Toolkit**.
2. Add a compute node to the end of a message flow.
3. Enter fields in the ESQL text region as follows:

```
Set OutputRoot = InputRoot;
```

This copies the message for output.

```
Set OutputRoot.MQHRF2.Format = 'S0-CR';
```

This assures that the connector will check this format and convert the message appropriately.

```
SET OutputRoot.Properties.MessageFormat = 'XML';
```

This indicates to WebSphere Business Integration Message Broker that the message should be converted to XML upon delivery.

4. Click **Apply** to enable the compute node.

Figure 5 shows a sample view of a compute node configured to translate an incoming message to a format that the connector can understand. Once this compute node is enabled, an XML document representing the original message is issued to the connector input queue.

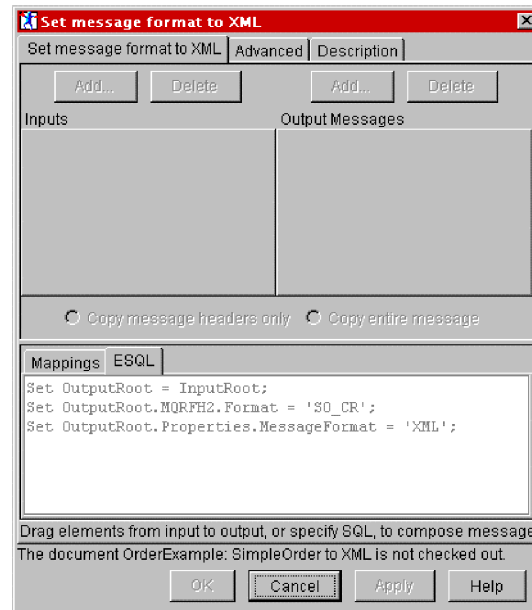


Figure 5. Setting the message format to XML

Note: If you have defined a custom format in the WebSphere Business Integration Message Broker Repository Manager, you can convert the legacy format to XML by simply setting the message format to XML. This format is different from the MQHRF2. The `OutputRoot.Properties.MessageFormat` relates to the MRM, while `OutputRoot.MQRFH2.Format` is used to specify a message format for an application that is receiving messages.

Chapter 7. Troubleshooting

- “Troubleshooting start-up problems”
- “Troubleshooting event processing”
- “Getting support” on page 62

This chapter describes problems that you may encounter when starting up or running the connector. It also describes how to get support from IBM.

Troubleshooting start-up problems

Problem	Potential Solution / Explanation
The connector shuts down unexpectedly during initialization and the following message is reported: Exception in thread "main" java.lang.NoClassDefFoundError: javax/jms/JMSEException...	Connector cannot find file <code>jms.jar</code> from the WebSphere MQ Java client libraries. Ensure that variable <code>MQSERIES_JAVA_LIB</code> in <code>start_connector.bat</code> points to the WebSphere MQ Java client libraries folder.
The connector shuts down unexpectedly during initialization and the following message is reported: Exception in thread "main" java.lang.NoClassDefFoundError: com/ibm/mq/jms/MQConnectionFactory...	Connector cannot find file <code>com.ibm.mqjms.jar</code> from the WebSphere MQ Java client libraries. Ensure that variable <code>MQSERIES_JAVA_LIB</code> in <code>start_connector.bat</code> points to the WebSphere MQ Java client libraries folder.
The connector shuts down unexpectedly during initialization and the following message is reported: Exception in thread "main" java.lang.NoClassDefFoundError: javax/naming/Referenceable...	Connector cannot find file <code>jndi.jar</code> from the WebSphere MQ Java client libraries. Ensure that variable <code>MQSERIES_JAVA_LIB</code> in <code>start_connector.bat</code> points to the WebSphere MQ Java client libraries folder.
The connector shuts down unexpectedly during initialization and the following exception is reported: java.lang.UnsatisfiedLinkError: no mqjbnd01 in shared library path	Connector cannot find a required run-time library (<code>mqjbnd01.dll</code> [Windows] or <code>libmqjbnd01.so</code> [UNIX]) from the IBM MQSeries Java client libraries. Ensure that your path includes the WebSphere MQ Java client libraries folder.
The connector reports MQJMS2005: failed to create MQQueueManager for ':'	Explicitly set values for the following properties: <code>HostName</code> , <code>Channel</code> , and <code>Port</code> .

Troubleshooting event processing

Problem	Potential solution / explanation
The connector delivers all messages with an MQRFH2 header.	To deliver messages with only the MQMD WebSphere MQ header, append <code>?targetClient=1</code> to the name of output queue URI. For example, if you output messages to queue <code>queue://my.queue.manager/OUT</code> , change the URI to <code>queue://my.queue.manager/OUT?targetClient=1</code> . See Chapter 2, “Installing the connector,” on page 11 for more information.
The connector truncates all message formats to 8-characters upon delivery regardless of how the format has been defined in the connector meta-object.	This is a limitation of the WebSphere MQ MQMD message header and not the connector.

Problem

During pollForEvents, the connector shuts down after the following JMS exception is reported:
MQJMS1000: Failed to create JMS message

Potential solution / explanation

This error appears to relate to the MQ Java API and not the connector itself. It often occurs when running the connector on the same machine as the WebSphere Business Integration Message Broker product itself. To remedy the problem, you need to perform the following:

1. Unzip the file Product_Dir\Dependencies\JRE_122_4.zip to folder *Product_Dir*\connectors\WBIMB\Dependencies\jre_122_Re14.
2. Open Product_Dir\connectors\WBIMB\start_MQSIV2.bat and un-comment the following two lines:oset
PATH=%CONNDIR%\Dependencies\jre_122_Re14\bin...oset
JAVA=%CONNDIR%\Dependencies\jre_122_Re14\lib\rt.jar
3. Restart the connector.

During pollForEvents, the connector shuts down after the following JMS exception is reported:
MQJMS1052: Unrecognised [sic] JMS Message class

This error can result from modifications made by WebSphere Business Integration Message Broker to a message originating from a JMS-compliant application. To correct this, remove remaining JMS information from problematic messages by adding the following SQL statement to a WebSphere Business Integration Message Broker compute node: SET
OutputRoot.MQRFH2.jms = null;

Getting support

Before you begin: Important information about this product may be available in Technical Support Technotes and Flashes issued after this document was published. These can be found on the WebSphere Business Integration Support Web site.

Perform the following steps to access the WebSphere Business Integration Support Web site:

1. Go to <http://www.ibm.com/software/integration/websphere/support/>
2. Select the component area of interest and browse or search the Technotes and Flashes sections.

Appendix A. Standard configuration properties for connectors

This appendix describes the standard configuration properties for the connector component of WebSphere Business Integration adapters. The information covers connectors running on the following integration brokers:

- WebSphere InterChange Server (ICS)
- WebSphere MQ Integrator, WebSphere MQ Integrator Broker, and WebSphere Business Integration Message Broker, collectively referred to as the WebSphere Message Brokers (WMQI).
- WebSphere Application Server (WAS)

Not every connector makes use of all these standard properties. When you select an integration broker from Connector Configurator, you will see a list of the standard properties that you need to configure for your adapter running with that broker.

For information about properties specific to the connector, see the relevant adapter user guide.

Note: In this document, backslashes (\) are used as the convention for directory paths. For UNIX installations, substitute slashes (/) for backslashes and follow the conventions for each operating system.

New and deleted properties

These standard properties have been added in this release.

New properties

- XMLNamespaceFormat

Deleted properties

- RestartCount

Configuring standard connector properties

Adapter connectors have two types of configuration properties:

- Standard configuration properties
- Connector-specific configuration properties

This section describes the standard configuration properties. For information on configuration properties specific to a connector, see its adapter user guide.

Using Connector Configurator

You configure connector properties from Connector Configurator, which you access from System Manager. For more information on using Connector Configurator, refer to the Connector Configurator appendix.

Note: Connector Configurator and System Manager run only on the Windows system. If you are running the connector on a UNIX system, you must have a Windows machine with these tools installed. To set connector properties

for a connector that runs on UNIX, you must start up System Manager on the Windows machine, connect to the UNIX integration broker, and bring up Connector Configurator for the connector.

Setting and updating property values

The default length of a property field is 255 characters.

The connector uses the following order to determine a property's value (where the highest number overrides other values):

1. Default
2. Repository (only if WebSphere InterChange Server is the integration broker)
3. Local configuration file
4. Command line

A connector obtains its configuration values at startup. If you change the value of one or more connector properties during a run-time session, the property's **Update Method** determines how the change takes effect. There are four different update methods for standard connector properties:

- **Dynamic**
The change takes effect immediately after it is saved in System Manager. If the connector is working in stand-alone mode (independently of System Manager), for example with one of the WebSphere message brokers, you can only change properties through the configuration file. In this case, a dynamic update is not possible.
- **Agent restart (ICS only)**
The change takes effect only after you stop and restart the application-specific component.
- **Component restart**
The change takes effect only after the connector is stopped and then restarted in System Manager. You do not need to stop and restart the application-specific component or the integration broker.
- **Server restart**
The change takes effect only after you stop and restart the application-specific component and the integration broker.

To determine how a specific property is updated, refer to the **Update Method** column in the Connector Configurator window, or see the Update Method column in Table 23 on page 65 below.

Summary of standard properties

Table 23 on page 65 provides a quick reference to the standard connector configuration properties. Not all the connectors make use of all these properties, and property settings may differ from integration broker to integration broker, as standard property dependencies are based on RepositoryDirectory.

You must set the values of some of these properties before running the connector. See the following section for an explanation of each property.

Note: In the "Notes" column in Table 23 on page 65, the phrase "Repository directory is REMOTE" indicates that the broker is the InterChange Server. When the broker is WMQI or WAS, the repository directory is set to LOCAL

Table 23. Summary of standard configuration properties

Property name	Possible values	Default value	Update method	Notes
AdminInQueue	Valid JMS queue name	CONNECTORNAME /ADMININQUEUE	Component restart	Delivery Transport is JMS
AdminOutQueue	Valid JMS queue name	CONNECTORNAME/ADMINOUTQUEUE	Component restart	Delivery Transport is JMS
AgentConnections	1-4	1	Component restart	Delivery Transport is MQ or IDL: Repository directory is <REMOTE> (broker is ICS)
AgentTraceLevel	0-5	0	Dynamic	
ApplicationName	Application name	Value specified for the connector application name	Component restart	
BrokerType	ICS, WMQI, WAS		Component restart	
CharacterEncoding	ascii7, ascii8, SJIS, Cp949, GBK, Big5, Cp297, Cp273, Cp280, Cp284, Cp037, Cp437 Note: This is a subset of supported values.	ascii7	Component restart	
ConcurrentEventTriggeredFlows	1 to 32,767	1	Component restart	Repository directory is <REMOTE> (broker is ICS)
ContainerManagedEvents	No value or JMS	No value	Component restart	Delivery Transport is JMS
ControllerStoreAndForwardMode	true or false	true	Dynamic	Repository directory is <REMOTE> (broker is ICS)
ControllerTraceLevel	0-5	0	Dynamic	Repository directory is <REMOTE> (broker is ICS)
DeliveryQueue		CONNECTORNAME/DELIVERYQUEUE	Component restart	JMS transport only
DeliveryTransport	MQ, IDL, or JMS	JMS	Component restart	If Repository directory is local, then value is JMS only

Table 23. Summary of standard configuration properties (continued)

Property name	Possible values	Default value	Update method	Notes
DuplicateEventElimination	true or false	false	Component restart	JMS transport only: Container Managed Events must be <NONE>
FaultQueue		CONNECTORNAME/FAULTQUEUE	Component restart	JMS transport only
jms.FactoryClassName	CxCommon.Messaging.jms.IBMMQSeriesFactory or CxCommon.Messaging.jms.SonicMQFactory or any Java class name	CxCommon.Messaging.jms.IBMMQSeriesFactory	Component restart	JMS transport only
jms.MessageBrokerName	If FactoryClassName is IBM, use crossworlds.queue.manager. If FactoryClassName is Sonic, use localhost:2506.	crossworlds.queue.manager	Component restart	JMS transport only
jms.NumConcurrentRequests	Positive integer	10	Component restart	JMS transport only
jms.Password	Any valid password		Component restart	JMS transport only
jms.UserName	Any valid name		Component restart	JMS transport only
JvmMaxHeapSize	Heap size in megabytes	128m	Component restart	Repository directory is <REMOTE> (broker is ICS)
JvmMaxNativeStackSize	Size of stack in kilobytes	128k	Component restart	Repository directory is <REMOTE> (broker is ICS)
JvmMinHeapSize	Heap size in megabytes	1m	Component restart	Repository directory is <REMOTE> (broker is ICS)
ListenerConcurrency	1- 100	1	Component restart	Delivery Transport must be MQ
Locale	en_US, ja_JP, ko_KR, zh_CN, zh_TW, fr_FR, de_DE, it_IT, es_ES, pt_BR Note: This is a subset of the supported locales.	en_US	Component restart	

Table 23. Summary of standard configuration properties (continued)

Property name	Possible values	Default value	Update method	Notes
LogAtInterchangeEnd	true or false	false	Component restart	Repository Directory must be <REMOTE> (broker is ICS)
MaxEventCapacity	1-2147483647	2147483647	Dynamic	Repository Directory must be <REMOTE> (broker is ICS)
MessageFileName	Path or filename	CONNECTORNAMEConnector.txt	Component restart	
MonitorQueue	Any valid queue name	CONNECTORNAME/MONITORQUEUE	Component restart	JMS transport only: DuplicateEvent Elimination must be true
OADAutoRestartAgent	true or false	false	Dynamic	Repository Directory must be <REMOTE> (broker is ICS)
OADMaxNumRetry	A positive number	1000	Dynamic	Repository Directory must be <REMOTE> (broker is ICS)
OADRetryTimeInterval	A positive number in minutes	10	Dynamic	Repository Directory must be <REMOTE> (broker is ICS)
PollEndTime	HH:MM	HH:MM	Component restart	
PollFrequency	A positive integer in milliseconds no (to disable polling) key (to poll only when the letter p is entered in the connector's Command Prompt window)	10000	Dynamic	
PollQuantity	1-500	1	Agent restart	JMS transport only: Container Managed Events is specified
PollStartTime	HH:MM(HH is 0-23, MM is 0-59)	HH:MM	Component restart	

Table 23. Summary of standard configuration properties (continued)

Property name	Possible values	Default value	Update method	Notes
RepositoryDirectory	Location of metadata repository		Agent restart	For ICS: set to <REMOTE> For WebSphere MQ message brokers and WAS: set to C:\crossworlds\repository
RequestQueue	Valid JMS queue name	CONNECTORNAME/REQUESTQUEUE	Component restart	Delivery Transport is JMS
ResponseQueue	Valid JMS queue name	CONNECTORNAME/RESPONSEQUEUE	Component restart	Delivery Transport is JMS: required only if Repository directory is <REMOTE>
RestartRetryCount	0-99	3	Dynamic	
RestartRetryInterval	A sensible positive value in minutes: 1 - 2147483547	1	Dynamic	
RHF2MessageDomain	mrm, xml	mrm	Component restart	Only if Delivery Transport is JMS and WireFormat is CwXML.
SourceQueue	Valid WebSphere MQ name	CONNECTORNAME/SOURCEQUEUE	Agent restart	Only if Delivery Transport is JMS and Container Managed Events is specified
SynchronousRequestQueue		CONNECTORNAME/ SYNCHRONOUSREQUESTQUEUE	Component restart	Delivery Transport is JMS
SynchronousRequestTimeout	0 - any number (milliseconds)	0	Component restart	Delivery Transport is JMS
SynchronousResponseQueue		CONNECTORNAME/ SYNCHRONOUSRESPONSEQUEUE	Component restart	Delivery Transport is JMS
WireFormat	CwXML, CwBO	CwXML	Agent restart	CwXML if Repository Directory is not <REMOTE>: CwBO if Repository Directory is <REMOTE>
WsifSynchronousRequestTimeout	0 - any number (milliseconds)	0	Component restart	WAS only
XMLNamespaceFormat	short, long	short	Agent restart	WebSphere MQ message brokers and WAS only

Standard configuration properties

This section lists and defines each of the standard connector configuration properties.

AdminInQueue

The queue that is used by the integration broker to send administrative messages to the connector.

The default value is `CONNECTORNAME/ADMININQUEUE`.

AdminOutQueue

The queue that is used by the connector to send administrative messages to the integration broker.

The default value is `CONNECTORNAME/ADMINOUTQUEUE`.

AgentConnections

Applicable only if `RepositoryDirectory` is `<REMOTE>`.

The `AgentConnections` property controls the number of ORB (Object Request Broker) connections opened by `orb.init[]`.

The default value of this property is set to 1. You can change it as required.

AgentTraceLevel

Level of trace messages for the application-specific component. The default is 0. The connector delivers all trace messages applicable at the tracing level set or lower.

ApplicationName

Name that uniquely identifies the connector's application. This name is used by the system administrator to monitor the WebSphere business integration system environment. This property must have a value before you can run the connector.

BrokerType

Identifies the integration broker type that you are using. The options are ICS, WebSphere message brokers (WMQI, WMQIB or WBIMB) or WAS.

CharacterEncoding

Specifies the character code set used to map from a character (such as a letter of the alphabet, a numeric representation, or a punctuation mark) to a numeric value.

Note: Java-based connectors do not use this property. A C++ connector currently uses the value `ascii7` for this property.

By default, a subset of supported character encodings only is displayed in the drop-down list. To add other supported values to the drop-down list, you must manually modify the `\Data\Std\stdConnProps.xml` file in the product directory. For more information, see the appendix on Connector Configurator.

ConcurrentEventTriggeredFlows

Applicable only if RepositoryDirectory is <REMOTE>.

Determines how many business objects can be concurrently processed by the connector for event delivery. Set the value of this attribute to the number of business objects you want concurrently mapped and delivered. For example, set the value of this property to 5 to cause five business objects to be concurrently processed. The default value is 1.

Setting this property to a value greater than 1 allows a connector for a source application to map multiple event business objects at the same time and deliver them to multiple collaboration instances simultaneously. This speeds delivery of business objects to the integration broker, particularly if the business objects use complex maps. Increasing the arrival rate of business objects to collaborations can improve overall performance in the system.

To implement concurrent processing for an entire flow (from a source application to a destination application), you must:

- Configure the collaboration to use multiple threads by setting its Maximum number of concurrent events property high enough to use multiple threads.
- Ensure that the destination application's application-specific component can process requests concurrently. That is, it must be multi-threaded, or be able to use connector agent parallelism and be configured for multiple processes. Set the Parallel Process Degree configuration property to a value greater than 1.

The ConcurrentEventTriggeredFlows property has no effect on connector polling, which is single-threaded and performed serially.

ContainerManagedEvents

This property allows a JMS-enabled connector with a JMS event store to provide guaranteed event delivery, in which an event is removed from the source queue and placed on the destination queue as a single JMS transaction.

There is no default value.

When ContainerManagedEvents is set to JMS, you must configure the following properties to enable guaranteed event delivery:

- PollQuantity = 1 to 500
- SourceQueue = /SOURCEQUEUE

You must also configure a data handler with the MimeType, DHClass (data handler class), and DataHandlerConfigMOName (the meta-object name, which is optional) properties. To set those values, use the **Data Handler** tab in Connector Configurator.

These properties are adapter-specific, but **example** values are:

- MimeType = text/xml
- DHClass = com.crossworlds.DataHandlers.text.xml
- DataHandlerConfigMOName = MO_DataHandler_Default

The fields for these values in the Data Handler tab will be displayed only if you have set ContainerManagedEvents to JMS.

Note: When `ContainerManagedEvents` is set to `JMS`, the connector does *not* call its `pollForEvents()` method, thereby disabling that method's functionality.

This property only appears if the `DeliveryTransport` property is set to the value `JMS`.

ControllerStoreAndForwardMode

Applicable only if `RepositoryDirectory` is `<REMOTE>`.

Sets the behavior of the connector controller after it detects that the destination application-specific component is unavailable.

If this property is set to `true` and the destination application-specific component is unavailable when an event reaches ICS, the connector controller blocks the request to the application-specific component. When the application-specific component becomes operational, the controller forwards the request to it.

However, if the destination application's application-specific component becomes unavailable **after** the connector controller forwards a service call request to it, the connector controller fails the request.

If this property is set to `false`, the connector controller begins failing all service call requests as soon as it detects that the destination application-specific component is unavailable.

The default is `true`.

ControllerTraceLevel

Applicable only if `RepositoryDirectory` is `<REMOTE>`.

Level of trace messages for the connector controller. The default is `0`.

DeliveryQueue

Applicable only if `DeliveryTransport` is `JMS`.

The queue that is used by the connector to send business objects to the integration broker.

The default value is `CONNECTORNAME/DELIVERYQUEUE`.

DeliveryTransport

Specifies the transport mechanism for the delivery of events. Possible values are `MQ` for WebSphere MQ, `IDL` for CORBA IIOP, or `JMS` for Java Messaging Service.

- If the `RepositoryDirectory` is remote, the value of the `DeliveryTransport` property can be `MQ`, `IDL`, or `JMS`, and the default is `IDL`.
- If the `RepositoryDirectory` is a local directory, the value may only be `JMS`.

The connector sends service call requests and administrative messages over CORBA IIOP if the value configured for the `DeliveryTransport` property is `MQ` or `IDL`.

WebSphere MQ and IDL

Use WebSphere MQ rather than IDL for event delivery transport, unless you must have only one product. WebSphere MQ offers the following advantages over IDL:

- Asynchronous communication:
WebSphere MQ allows the application-specific component to poll and persistently store events even when the server is not available.
- Server side performance:
WebSphere MQ provides faster performance on the server side. In optimized mode, WebSphere MQ stores only the pointer to an event in the repository database, while the actual event remains in the WebSphere MQ queue. This saves having to write potentially large events to the repository database.
- Agent side performance:
WebSphere MQ provides faster performance on the application-specific component side. Using WebSphere MQ, the connector's polling thread picks up an event, places it in the connector's queue, then picks up the next event. This is faster than IDL, which requires the connector's polling thread to pick up an event, go over the network into the server process, store the event persistently in the repository database, then pick up the next event.

JMS

Enables communication between the connector and client connector framework using Java Messaging Service (JMS).

If you select JMS as the delivery transport, additional JMS properties such as `jms.MessageBrokerName`, `jms.FactoryClassName`, `jms.Password`, and `jms.UserName`, appear in Connector Configurator. The first two of these properties are required for this transport.

Important: There may be a memory limitation if you use the JMS transport mechanism for a connector in the following environment:

- AIX 5.0
- WebSphere MQ 5.3.0.1
- When ICS is the integration broker

In this environment, you may experience difficulty starting both the connector controller (on the server side) and the connector (on the client side) due to memory use within the WebSphere MQ client. If your installation uses less than 768M of process heap size, IBM recommends that you set:

- The `LDR_CNTRL` environment variable in the `CWSharedEnv.sh` script.

This script resides in the `\bin` directory below the product directory. With a text editor, add the following line as the first line in the `CWSharedEnv.sh` script:

```
export LDR_CNTRL=MAXDATA=0x30000000
```

This line restricts heap memory usage to a maximum of 768 MB (3 segments * 256 MB). If the process memory grows more than this limit, page swapping can occur, which can adversely affect the performance of your system.

- The `IPCCBaseAddress` property to a value of 11 or 12. For more information on this property, see the *System Installation Guide for UNIX*.

DuplicateEventElimination

When you set this property to true, a JMS-enabled connector can ensure that duplicate events are not delivered to the delivery queue. To use this feature, the connector must have a unique event identifier set as the business object's **ObjectEventId** attribute in the application-specific code. This is done during connector development.

This property can also be set to false.

Note: When `DuplicateEventElimination` is set to true, you must also configure the `MonitorQueue` property to enable guaranteed event delivery.

FaultQueue

If the connector experiences an error while processing a message then the connector moves the message to the queue specified in this property, along with a status indicator and a description of the problem.

The default value is `CONNECTORNAME/FAULTQUEUE`.

JvmMaxHeapSize

The maximum heap size for the agent (in megabytes). This property is applicable only if the `RepositoryDirectory` value is `<REMOTE>`.

The default value is 128m.

JvmMaxNativeStackSize

The maximum native stack size for the agent (in kilobytes). This property is applicable only if the `RepositoryDirectory` value is `<REMOTE>`.

The default value is 128k.

JvmMinHeapSize

The minimum heap size for the agent (in megabytes). This property is applicable only if the `RepositoryDirectory` value is `<REMOTE>`.

The default value is 1m.

jms.FactoryClassName

Specifies the class name to instantiate for a JMS provider. You *must* set this connector property when you choose JMS as your delivery transport mechanism (`DeliveryTransport`).

The default is `CxCommon.Messaging.jms.IBMMQSeriesFactory`.

jms.MessageBrokerName

Specifies the broker name to use for the JMS provider. You *must* set this connector property when you choose JMS as your delivery transport mechanism (`DeliveryTransport`).

The default is `crossworlds.queue.manager`. Use the default when connecting to a local message broker.

When you connect to a remote message broker, this property takes the following (mandatory) values:

`QueueMgrName:<Channel>:<HostName>:<PortNumber>`,

where the variables are:

`QueueMgrName`: The name of the queue manager.

`Channel`: The channel used by the client.

`HostName`: The name of the machine where the queue manager is to reside.

`PortNumber`: The port number to be used by the queue manager for listening.

For example:

```
jms.MessageBrokerName = WBIMB.Queue.Manager:CHANNEL1:RemoteMachine:1456
```

jms.NumConcurrentRequests

Specifies the maximum number of concurrent service call requests that can be sent to a connector at the same time. Once that maximum is reached, new service calls block and wait for another request to complete before proceeding.

The default value is 10.

jms.Password

Specifies the password for the JMS provider. A value for this property is optional.

There is no default.

jms.UserName

Specifies the user name for the JMS provider. A value for this property is optional.

There is no default.

ListenerConcurrency

This property supports multi-threading in MQ Listener when ICS is the integration broker. It enables batch writing of multiple events to the database, thus improving system performance. The default value is 1.

This property applies only to connectors using MQ transport. The `DeliveryTransport` property must be set to MQ.

Locale

Specifies the language code, country or territory, and, optionally, the associated character code set. The value of this property determines such cultural conventions as collation and sort order of data, date and time formats, and the symbols used in monetary specifications.

A locale name has the following format:

```
ll_TT.codeset
```

where:

<i>ll</i>	a two-character language code (usually in lower case)
<i>TT</i>	a two-letter country or territory code (usually in upper case)
<i>codeset</i>	the name of the associated character code set; this portion of the name is often optional.

By default, only a subset of supported locales appears in the drop-down list. To add other supported values to the drop-down list, you must manually modify the `\Data\Std\stdConnProps.xml` file in the product directory. For more information, see the appendix on Connector Configurator.

The default value is en_US. If the connector has not been globalized, the only valid value for this property is en_US. To determine whether a specific connector has been globalized, see the connector version list on these websites:

<http://www.ibm.com/software/websphere/wbiadapters/infocenter>, or
<http://www.ibm.com/websphere/integration/wicsserver/infocenter>

LogAtInterchangeEnd

Applicable only if RepositoryDirectory is <REMOTE>.

Specifies whether to log errors to the integration broker's log destination. Logging to the broker's log destination also turns on e-mail notification, which generates e-mail messages for the MESSAGE_RECIPIENT specified in the InterchangeSystem.cfg file when errors or fatal errors occur.

For example, when a connector loses its connection to its application, if LogAtInterChangeEnd is set to true, an e-mail message is sent to the specified message recipient. The default is false.

MaxEventCapacity

The maximum number of events in the controller buffer. This property is used by flow control and is applicable only if the value of the RepositoryDirectory property is <REMOTE>.

The value can be a positive integer between 1 and 2147483647. The default value is 2147483647.

MessageFileName

The name of the connector message file. The standard location for the message file is \connectors\messages in the product directory. Specify the message filename in an absolute path if the message file is not located in the standard location.

If a connector message file does not exist, the connector uses InterchangeSystem.txt as the message file. This file is located in the product directory.

Note: To determine whether a specific connector has its own message file, see the individual adapter user guide.

MonitorQueue

The logical queue that the connector uses to monitor duplicate events. It is used only if the DeliveryTransport property value is JMS and DuplicateEventElimination is set to TRUE.

The default value is CONNECTORNAME/MONITORQUEUE

OADAutoRestartAgent

Valid only when the RepositoryDirectory is <REMOTE>.

Specifies whether the connector uses the automatic and remote restart feature. This feature uses the MQ-triggered Object Activation Daemon (OAD) to restart the connector after an abnormal shutdown, or to start a remote connector from System Monitor.

This property must be set to true to enable the automatic and remote restart feature. For information on how to configure the MQ-triggered OAD feature, see the *Installation Guide for Windows* or *for UNIX*.

The default value is false.

OADMaxNumRetry

Valid only when the RepositoryDirectory is <REMOTE>.

Specifies the maximum number of times that the MQ-triggered OAD automatically attempts to restart the connector after an abnormal shutdown. The OADAutoRestartAgent property must be set to true for this property to take effect.

The default value is 1000.

OADRetryTimeInterval

Valid only when the RepositoryDirectory is <REMOTE>.

Specifies the number of minutes in the retry-time interval for the MQ-triggered OAD. If the connector agent does not restart within this retry-time interval, the connector controller asks the OAD to restart the connector agent again. The OAD repeats this retry process as many times as specified by the OADMaxNumRetry property. The OADAutoRestartAgent property must be set to true for this property to take effect.

The default is 10.

PollEndTime

Time to stop polling the event queue. The format is HH:MM, where *HH* represents 0-23 hours, and *MM* represents 0-59 seconds.

You must provide a valid value for this property. The default value is HH:MM, but must be changed.

PollFrequency

This is the interval between the end of the last poll and the start of the next poll. PollFrequency specifies the amount of time (in milliseconds) between the end of one polling action, and the start of the next polling action. This is not the interval between polling actions. Rather, the logic is as follows:

- Poll to obtain the number of objects specified by the value of PollQuantity.
- Process these objects. For some adapters, this may be partly done on separate threads, which execute asynchronously to the next polling action.
- Delay for the interval specified by PollFrequency.
- Repeat the cycle.

Set PollFrequency to one of the following values:

- The number of milliseconds between polling actions (an integer).
- The word *key*, which causes the connector to poll only when you type the letter *p* in the connector's Command Prompt window. Enter the word in lowercase.
- The word *no*, which causes the connector not to poll. Enter the word in lowercase.

The default is 10000.

Important: Some connectors have restrictions on the use of this property. Where they exist, these restrictions are documented in the chapter on installing and configuring the adapter.

PollQuantity

Designates the number of items from the application that the connector should poll for. If the adapter has a connector-specific property for setting the poll quantity, the value set in the connector-specific property will override the standard property value.

FIX

An email message is also considered an event. The connector behaves as follows when it is polled for email.

Polled once - connector goes to pick 1. the body of the message as it is also considered an attachment also. Since no DH was specified for this mime type, it will ignore the body. 2. connector process first PO attachment. DH is available for this mime type so it sends the business object to the Visual Test Connector. If the 3. accept in VTC again no BO should come thru Polled second time 1. connector process second PO attachment. DH is available for this mime type so it sends the BO to VTC2. accept in VTC again now the third PO attachment should come through. This is the correct behaviour.

PollStartTime

The time to start polling the event queue. The format is *HH:MM*, where *HH* represents 0-23 hours, and *MM* represents 0-59 seconds.

You must provide a valid value for this property. The default value is *HH:MM*, but must be changed.

RequestQueue

The queue that is used by the integration broker to send business objects to the connector.

The default value is `CONNECTOR/REQUESTQUEUE`.

RepositoryDirectory

The location of the repository from which the connector reads the XML schema documents that store the meta-data for business object definitions.

When the integration broker is ICS, this value must be set to `<REMOTE>` because the connector obtains this information from the InterChange Server repository.

When the integration broker is a WebSphere message broker or WAS, this value must be set to `<local directory>`.

ResponseQueue

Applicable only if `DeliveryTransport` is JMS and required only if `RepositoryDirectory` is `<REMOTE>`.

Designates the JMS response queue, which delivers a response message from the connector framework to the integration broker. When the integration broker is ICS, the server sends the request and waits for a response message in the JMS response queue.

RestartRetryCount

Specifies the number of times the connector attempts to restart itself. When used for a parallel connector, specifies the number of times the master connector application-specific component attempts to restart the slave connector application-specific component.

The default is 3.

RestartRetryInterval

Specifies the interval in minutes at which the connector attempts to restart itself. When used for a parallel connector, specifies the interval at which the master connector application-specific component attempts to restart the slave connector application-specific component. Possible values ranges from 1 to 2147483647.

The default is 1.

RHF2MessageDomain

WebSphere message brokers and WAS only.

This property allows you to configure the value of the field domain name in the JMS header. When data is sent to WMQI over JMS transport, the adapter framework writes JMS header information, with a domain name and a fixed value of `mrm`. A configurable domain name enables users to track how the WMQI broker processes the message data.

A sample header would look like this:

```
<mcd><Msd>mrm</Msd><Set>3</Set><Type>
Retek_POPhyDesc</Type><Fmt>CwXML</Fmt></mcd>
```

The default value is `mrm`, but it may also be set to `xml`. This property only appears when `DeliveryTransport` is set to `JMSand` and `WireFormat` is set to `CwXML`.

SourceQueue

Applicable only if `DeliveryTransport` is `JMS` and `ContainerManagedEvents` is specified.

Designates the JMS source queue for the connector framework in support of guaranteed event delivery for JMS-enabled connectors that use a JMS event store. For further information, see “`ContainerManagedEvents`” on page 70.

The default value is `CONNECTOR/SOURCEQUEUE`.

SynchronousRequestQueue

Applicable only if `DeliveryTransport` is `JMS`.

Delivers request messages that require a synchronous response from the connector framework to the broker. This queue is necessary only if the connector uses synchronous execution. With synchronous execution, the connector framework

sends a message to the SynchronousRequestQueue and waits for a response back from the broker on the SynchronousResponseQueue. The response message sent to the connector bears a correlation ID that matches the ID of the original message.

The default is CONNECTORNAME/SYNCHRONOUSREQUESTQUEUE

SynchronousResponseQueue

Applicable only if DeliveryTransport is JMS.

Delivers response messages sent in reply to a synchronous request from the broker to the connector framework. This queue is necessary only if the connector uses synchronous execution.

The default is CONNECTORNAME/SYNCHRONOUSRESPONSEQUEUE

SynchronousRequestTimeout

Applicable only if DeliveryTransport is JMS.

Specifies the time in minutes that the connector waits for a response to a synchronous request. If the response is not received within the specified time, then the connector moves the original synchronous request message into the fault queue along with an error message.

The default value is 0.

WireFormat

Message format on the transport.

- If the RepositoryDirectory is a local directory, the setting is CwXML.
- If the value of RepositoryDirectory is <REMOTE>, the setting is CwB0.

WsifSynchronousRequestTimeout

WAS integration broker only.

Specifies the time in minutes that the connector waits for a response to a synchronous request. If the response is not received within the specified, time then the connector moves the original synchronous request message into the fault queue along with an error message.

The default value is 0.

XMLNameSpaceFormat

WebSphere message brokers and WAS integration broker only.

A strong property that allows the user to specify short and long name spaces in the XML format of business object definitions.

The default value is short.

Appendix B. Connector-specific properties for the WBI Message Broker adapter

This appendix describes connector-specific properties for the adapter for WebSphere Business Integration Message Broker. Refer to these properties when using Connector Configurator to configure the adapter.

Overview of connector-specific properties

Connector-specific configuration properties provide information needed by the connector agent at runtime. Connector-specific properties also provide a way of changing static information or logic within the connector agent without having to recode and rebuild the agent.

Connector-specific properties

First Paragraph

Table 24 lists the connector-specific configuration properties for the connector. See the sections that follow for explanations of the properties.

Table 24. Connector-specific configuration properties

Name	Possible values	Default value	Required
ApplicationPassword	Login password		No
ApplicationUserName	Login user ID		No
ArchiveQueue	Queue to which copies of successfully processed messages are sent	MQWFCONN.ARCHIVE	No
CCSID	Character set for queue manager connection	null	Yes
Channel	MQ server connector channel		Yes
ConfigurationMetaObject	Name of configuration meta-object		Yes
DataHandlerClassName	Data handler class name	com.crossworlds.DataHandlers. text.xml	Yes
DataHandlerConfigMO	Data handler meta-object	MO_DataHandler_Default	Yes
DataHandlerMimeType	MIME type of file	text/xml	No
DefaultVerb	Any verb supported by the connector.	Create	
EnableMessageProducerCache	true or false	true	No
ErrorQueue	Queue for unprocessed messages	MQWFCONN.ERROR	No
HostName	WebSphere MQ server		No
InDoubtEvents	FailOnStartup Reprocess IgnoreLogError	Reprocess	No
InputQueue	Poll queue	MQWFCONN.IN	Yes
InProgressQueue	In-progress event queue	MQWFCONN.IN_PROGRESS	No
PollQuantity	Number of messages to retrieve from each queue specified in the InputQueue property	1	No
Port	Port established for the WebSphere MQ listener		No
ReplyToQueue	Queue to which response messages are delivered when the connector issues requests	MQWFCONN.REPLYTO	No
SessionPoolSizeForRequests	Maximum pool size for caching the sessions used during request processing	10	No
UnsubscribedQueue	Queue to which unsubscribed messages are sent	MQWFCONN.UNSUBSCRIBED	No
UseDefaults	true or false	false	

ApplicationPassword

Password used with UserID to log in to WebSphere Business Integration Message Broker.

Default = None.

If the ApplicationPassword is left blank or removed, the connector uses the default password provided by WebSphere Business Integration Message Broker.

ApplicationUserName

User ID used with Password to log in to WebSphere Business Integration Message Broker.

Default = None.

If the ApplicationUserName is left blank or removed, the connector uses the default user ID provided by WebSphere Business Integration Message Broker.

ArchiveQueue

Queue to which copies of successfully processed messages are sent.

Default = MQWFCNN.ARCHIVE

CCSID

The character set for the queue manager connection. The value of this property should match that of the CCSID property in the queue URI. See “Setting Queue Uniform Resource Identifiers (URI)” on page 33.

Default = null.

Channel

MQ server connector channel through which the connector communicates with WebSphere Business Integration Message Broker.

Default = none.

If the Channel is left blank or removed, the connector uses the default server channel provided by WebSphere Business Integration Message Broker.

ConfigurationMetaObject

Name of meta-object containing configuration information for the connector

Default = none.

DataHandlerClassName

Data handler class to use when converting messages to and from business objects.

Default = com.crossworlds.DataHandlers.text.xml

DataHandlerConfigMO

Meta-object passed to data handler to provide configuration information.

Default = MO_DataHandler_Default

DataHandlerMimeType

Allows you to request a data handler based on a particular MIME type.

Default = text/xml

DefaultVerb

Specifies the verb to be set within an incoming business object, if it has not been set by the data handler during polling.

Default= Create

EnableMessageProducerCache

Boolean property to specify that the adapter should enable a message producer cache for sending request messages.

Default= true

ErrorQueue

Queue to which messages that could not be processed are sent.

Default = queue://CrossWorlds.QueueManager/ERROR

HostName

The name of the server hosting WebSphere Business Integration Message Broker.

Default = none.

InDoubtEvents

Specifies how to handle in-progress events that are not fully processed due to unexpected connector shutdown. Choose one of four actions to take if events are found in the in-progress queue during initialization:

- **FailOnStartup**. Log an error and immediately shut down.
- **Reprocess**. Process the remaining events first, then process messages in the input queue.
- **Ignore**. Disregard any messages in the in-progress queue.
- **LogError**. Log an error but do not shut down

Default = Reprocess.

InputQueue

Message queues that will be polled by the connector for new messages. The connector accepts multiple semi-colon delimited queue names. For example, to poll the following three queues: MyQueueA, MyQueueB, and MyQueueC, the value for connector configuration property *InputQueue* would equal: MyQueueA;MyQueueB;MyQueueC.

The connector polls the queues in a round-robin manner and retrieves up to *pollQuantity* number of messages from each queue. For example, if *pollQuantity* equals 2, and MyQueueA contains 2 messages, MyQueueB contains 1 message and MyQueueC contains 5 messages, the connector retrieves messages in the following manner:

Since we have a *pollQuantity* of 2, the connector will retrieve at most 2 messages from each queue per call to *pollForEvents*. For the first cycle (1 of 2), the connector retrieves the first message from each of MyQueueA, MyQueueB, and MyQueueC. That completes the first round of polling and if we had a *pollQuantity* of 1, the connector would stop. Since we have a *pollQuantity* of 2, the connector starts a second round of polling (2 of 2) and retrieves one message each from MyQueueA and MyQueueC--it skips MyQueueB since it is now empty. After polling all queues 2x each, the call to the method *pollForEvents* is complete. Here's the sequence of message retrieval:

1. 1 message from MyQueueA
2. 1 message from MyQueueB
3. 1 message from MyQueueC
4. 1 message from MyQueueA
5. Skip MyQueueB since it's now empty

6. 1 message from MyQueueC

Default = queue://CrossWorlds.QueueManager/IN

InProgressQueue

Message queue where messages are held during processing. You can configure the connector to operate without this queue by using System Manager to remove the default InProgressQueue name from the connector-specific properties. Doing so prompts a warning at startup that event delivery may be compromised if the connector is shut down while are events pending.

Default= queue://CrossWorlds.QueueManaer/IN_PROGRESS

PollQuantity

Number of messages to retrieve from each queue specified in the InputQueue property during a pollForEvents scan.

Default =1

Port

Port established for the WebSphere Business Integration Message Broker listener.

Default = None.

ReplyToQueue

Queue to which response messages are delivered when the connector issues requests.

Default = queue://CrossWorlds.QueueManager/REPLYTO

SessionPoolSizeForRequests

Maximum pool size for caching the sessions used during request processing.

Default = 10

UnsubscribedQueue

Queue to which messages that are not subscribed are sent.

Default = queue://CrossWorlds.QueueManager/UNSUBSCRIBED

Note: *Always check the values WebSphere Business Integration Message Broker provides since they may be incorrect or unknown. If so, please implicitly specify values.

UseDefaults

On a Create operation, if UseDefaults is set to true, the connector checks whether a valid value or a default value is provided for each isRequired business object attribute. If a value is provided, the Create operation succeeds. If the parameter is set to false, the connector checks only for a valid value and causes the Create operation to fail if it is not provided. The default is false.

Appendix C. Tutorial

- “Overview of the tutorial”
- “Before you begin” on page 88
- “Setting up your environment” on page 88
- “Running the scenarios” on page 91

This tutorial is designed to show you the following:

- How the Adapter for WebSphere Business Integration Message Broker can be integrated with WebSphere Business Integration Message Broker’s message flows.
- How the adapter sends and receives messages to and from a legacy application.

The tutorial’s scenarios are designed to show the basic points of the adapter’s functionality.

See the Preface of this document for a guide to notational conventions.

Overview of the tutorial

The tutorial involves a legacy application (simulated, using a utility) that sends an XML message to the adapter via a message broker. The message conveys changes in the status of various catalog items. In place of the data warehousing flows and message conversions associated with WebSphere Business Integration Message Broker, the legacy message instead passes through a simple color-check flow. Then the message is sent to the adapter.

The adapter receives the color-processed message from the WBI Message Broker. Using the XML data handler, the adapter converts the message into business object `Sample_WBIMB_LegacyItem_XMLDoc` and passes this object to the integration broker. In the tutorial, you simulate the Port connector (using the Visual Test Connector), retrieve the newly created business object, and confirm its contents.

In the opposite direction, you issue the business object from the Visual Test Connector. The Adapter for WBI Message Broker converts the object to a legacy message. The adapter delivers the message to the WebSphere Business Integration Message Broker application where it is processed (its message format is updated to `LI_UP`) and redirected to the (simulated) legacy application. This scenario is demonstrated with the adapter configured for WMQI.

Everything you need to run this scenario is installed with the adapter and adapter framework:

- The WebSphere Business Integration Message Broker projects (Message Flow project and Server project) that contain the sample message flows, sample domain configuration manager file, and a deployable bar file.
- The Port connector repository and Visual Test Connector (included with installation of the ADK). The Port Connector is comprised of an adapter definition with no underlying code and as such is well-suited for simulation scenarios. The Visual Test Connector is a tool for testing interfaces.

In this appendix

This appendix covers the following tasks:

Table 25. Demonstrating the adapter: task roadmap

Task	Associated procedure (see...)
Reviewing an installation checklist	"Before you begin"
Setting up your environment	"Setting up your environment"
Running the scenarios	"Running the scenarios" on page 91

Before you begin

Before proceeding with this tutorial, make sure that you have performed the following tasks:

- You installed and are experienced with the IBM WebSphere product.
- You installed WebSphere MQ 5.1 or later.
- You installed WebSphere Business Integration Message Broker 5.0 or later.
- You installed the WebSphere MQ client libraries for Java.
- You installed the Adapter for WebSphere Business Integration Message Broker (configuration instructions are provided in this tutorial).
- Your WebSphere MQ adapter queue manager is named `crossworlds.queue.manager` (the default value during installation). Otherwise, substitute your queue manager name whenever this document refers to `crossworlds.queue.manager`. In addition, you must do the following:
 1. Open the Message Brokers Toolkit and change the `QueueManagerName` attribute of all `MQOutput` nodes in the sample message flows to `crossworlds.queue.manager`.
 2. Open the `LocalDomain.configmgr` file in the server project (this project is in the samples you installed with the adapter) and then change the queue manager name (that your broker is configured for) to `crossworlds.queue.manager`.
 3. Open Business Object Designer and change the output queue manager specified in sample meta-object `Sample_WBIMB_MO_Config` to `crossworlds.queue.manager`
- You performed a full installation (not the basic installation) of WebSphere MQ, including WebSphere MQ explorer. Although not necessary, WebSphere MQ explorer makes it easier to establish queues and examine messages.
- You installed the WebSphere MQ client libraries for Java.

Setting up your environment

This topic contains an overview and procedure for setting up your environment.

Overview of setting up your environment

This section describes how to prepare your environment to work with the tutorial. In what follows, *sample_folder* refers to the `samples/Legacy Item` folder in the installed file structure. For further information, see "Verifying installation" on page 13. The business object repository is provided in the *sample_folder* as `.xsd` files.

The tutorial depicts a simple business object exchange between the WebSphere Business Integration Message Broker adapter and the Visual Test Connector. The exchange occurs in a WebSphere Business Integration Message Broker environment.

Steps for setting up your environment

To set up for the tutorial, please configure the following:

1. **Define the queues** The tutorial requires that eight queues be defined in your queue manager. To create the necessary queues, type RUNMQSC from a command line and issue the following commands:

- DEFINE QL('Samples/WBIMB/Item/LegacyApp')
- DEFINE QL('Samples/WBIMB/Item/WBIMBConnector')
- DEFINE QL('Samples/LegacyApp/Item/WBIMB')
- DEFINE QL('Samples/WBIMBConnector/Item/WBIMB')
- DEFINE QL('Samples/WBIMB/FAIL')
- DEFINE QL('Samples/WBIMBConnector/UNSUBSCRIBED')
- DEFINE QL('Samples/WBIMBConnector/ERROR')
- DEFINE QL('Samples/WBIMBConnector/ARCHIVE')

Next you define the queues required by the WBI Message Broker adapter and Port Connector for the WBI Message Broker configuration as follows:

- DEFINE QL('WBIMBConnector/ADMININQUEUE')
- DEFINE QL('WBIMBConnector/ADMINOUTQUEUE')
- DEFINE QL('WBIMBConnector/DELIVERYQUEUE')
- DEFINE QL('WBIMBConnector/FAULTQUEUE')
- DEFINE QL('WBIMBConnector/REQUESTQUEUE')
- DEFINE QL('WBIMBConnector/RESPONSEQUEUE')
- DEFINE QL('WBIMBConnector/SYNCHRONOUSREQUESTQUEUE')
- DEFINE QL('WBIMBConnectorSYNCHRONOUSRESPONSEQUEUE')
- DEFINE QL('WBIMBConnectorMONITORQUEUE')
- DEFINE QL('PortConnector/ADMININQUEUE')
- DEFINE QL('PortConnector/ADMINOUTQUEUE')
- DEFINE QL('PortConnector/DELIVERYQUEUE')
- DEFINE QL('PortConnector/FAULTQUEUE')
- DEFINE QL('PortConnector/REQUESTQUEUE')
- DEFINE QL('PortConnector/RESPONSEQUEUE')
- DEFINE QL('PortConnector/SYNCHRONOUSREQUESTQUEUE')
- DEFINE QL('PortConnector/SYNCHRONOUSRESPONSEQUEUE')

2. **Configure the adapter** Using **Connector Configurator**, select **File->Open->From File** and load the `WBIMBConnector.cfg` in the *sample_folder*. Check or change the adapter configuration properties to match the values listed below. For further information on using Connector Configurator, see Chapter 6, “Configuring a data handler,” on page 57; for more on connector-specific properties, see Appendix B, “Connector-specific properties for the WBI Message Broker adapter,” on page 81.

Set the following standard properties:

- **Broker Type** Set this property to WMQI.
- **Repository Directory** Set this property to the *sample_folder* directory.
- **DuplicateEventElimination** Set this property to true.
- **MonitorQueue** Set this property to `WBIMBConnector/MONITORQUEUE`

. Set the following connector-specific properties:

- **ConfigurationMetaObject** Set this property to `Sample_WBIMB_MO_Config`.

- DataHandlerConfigMO Set this property to Sample_WBIMB_MO_DataHandler.
 - DataHandlerMimeType Set this property to text/xml.
 - ErrorQueue Set this property to queue://crossworlds.queue.manager/Samples/WBIMBConnector/ERROR.
 - InputQueue Set this property to queue://crossworlds.queue.manager/Samples/WBIMB/Item/WBIMBConnector.
 - UnsubscribedQueue Set this property to queue://crossworlds.queue.manager/Samples/WBIMBConnector/UNSUBSCRIBED.
 - ArchiveQueue Set this property to queue://crossworlds.queue.manager/Samples/WBIMBConnector/ARCHIVE
3. **Configure the Port Connector Using Connector Configurator**, set the following standard properties:
- Broker Type Set this property to WMQI.
 - Repository Directory Set this property to the *sample_folder* directory.
 - RequestQueue Set this property to WBIMBConnector/DELIVERYQUEUE (the DeliveryQueue property value for the WBI Message Broker adapter).
 - DeliveryQueue Set this property to WBIMBConnector/REQUESTQUEUE (the RequestQueue property value for the WBI Message Broker adapter).
4. **Configure supported business objects** In order to use business objects, adapters must first support them. Using **Connector Configurator**, click the **Supported Business Objects** tab for the WBI Message Broker adapter, add the business objects shown in Table 26 and set the **Message Set ID** to a unique value for each supported business object.

Table 26. Supported sample business objects for JMS adapter

Business object name	Message ID
Sample_WBIMB_MO_Config	1
Sample_WBIMB_MO_DataHandler	2
Sample_WBIMB_LegacyItem	3
Sample_WBIMB_LegacyItem_XMLDoc	4

Using **Connector Configurator**, open the Port connector definition PortConnector.cfg provided in the *sample_folder*, and add the supported business objects and Message IDs shown in Table 27.

Table 27. Supported sample business objects for Port connector

Business object name	Message ID
Sample_WBIMB_LegacyItem	1
Sample_WBIMB_LegacyItem_XMLDoc	2

5. **Create a new message flow project**
- a. Open the **Message Brokers Toolkit** and create a new **Message Flow Project**. Import all the message flows and ESQL files from the *sample_folder/MSG_FLOW_PROJECT* directory to your Message Flow Project.
 - b. Create a new **Server Project** and import all the files from the *sample_folder/Sample_WBIMB_Project* to your server project.
 - c. Connect to the domain displayed under the **Domains** view in your **Broker Administration** perspective. Deploy the bar file Sample_WBIMB_bar.bar from the **Broker Administration Navigator** panel in your **Broker Administration** perspective to the default execution group of your broker.

6. Configure connector start scripts

Windows:

- a. Open the properties of the shortcut for the adapter for WBI Message Broker.
- b. As the last argument in the target, add `-c` followed by the *<full path and filename for the WBIMBConnector.cfg file>* For example:

```
-cProduct_Dir\connectors\WBIMB\LegacyItem\  
WBIMBConnector.cfg
```

UNIX:

- a. Open the file:
Product_Dir/bin/connector_manager_WebSphereBusinessIntegrationMessageBroker.
Set the value of the AGENTCONFIG_FILE property to `-c` followed by the *<full path and filename for the WBIMBConnector.cfg file>*. For example:

```
AGENTCONFIG_FILE=-cProduct_Dir/connectors/WebSphereBusinessIntegrationMessageBroker  
/samples/LegacyItem/WBIMBConnector.cfg
```

Running the scenarios

This topic contains an overview and procedures for running the scenarios.

Overview of running the scenarios

The tutorial includes a request processing and an event processing scenario. To run the scenarios, you must configure the samples as described in “Setting up your environment” on page 88.

Steps for running the scenarios

To run the scenarios, do the following:

1. **Start the Adapter for WebSphere Business Integration Message Broker** if it is not already running. For further information, see “Starting the connector” on page 38.
2. **Start the Visual Test Connector** if it is not already running. For further information, see *Implementing Adapters with WebSphere Message Brokers*.
3. **Start the WebSphere Business Integration Message Broker** application broker if not already running. For further information, see *Implementing Adapters with WebSphere Message Brokers*.
4. **Simulate the Port connector** Using **Visual Test Connector**, define a profile for the Port connector:
 - a. Select **File->Create/Select Profile** from the **Visual Test Connector** menu, then select **File-> New Profile** from the **Connector Profile** menu.
 - b. Select the Port Connector configuration file `PortConnector.cfg` in the *sample_folder*, then configure the Connector Name and Broker Type and click **OK**.
 - c. Select the profile you created and click **OK**.
5. **Test the request processing scenario** Using **Visual Test Connector**, create a new instance of a business object and send it:
 - a. Create a new instance of business object `Sample_WBIMB_LegacyItem_XMLDoc` by selecting the business object in the **BoType** drop-down box and then selecting **Create** for the **BOInstance**. This business object is merely an XML wrapper required by the XML data handler; you will need to create a new instance of child-object **LegacyItem** in your test object to contain actual data. Change the default values if desired
 - b. Send the message by clicking **Send BO**.

6. **Confirm message delivery** Using WebSphere MQ Explorer or a similar application, open queue `queue://crossworlds.queue.manager/Samples/WBIMB/Item/LegacyApp` to see if a new legacy item message with format `LI_UP` has arrived from the adapter. This indicates a successful delivery of the business object payload as a legacy message via the WebSphere Business Integration Message Broker application. If no message can be found, check in queue `queue://crossworlds.queue.manager/Samples/WBIMB/FAIL` to see if the message could not be processed by the WebSphere Business Integration Message Broker application. If this is the case, see *Implementing Adapters with WebSphere Message Brokers* to enable tracing. Then you can determine where the error occurred in the WebSphere Business Integration Message Broker application.
7. **Test the event processing scenario** Use utility `sample_folder\mqsipt.exe` to deliver a legacy item message to the adapter via the WebSphere Business Integration Message Broker application. The `mqsipt` utility has the following syntax:
`mqsipt [queue] [queue manager] < [message file].`
 The sample delivery message `LegacyItem.txt` resides in the `sample_folder` directory. For this tutorial, enter
`mqsipt Samples/LegacyApp/Item/WBIMB crossworlds.queue.manager < LegacyItem.txt`
 at the command line. If successful, a sample item message is delivered to the WebSphere Business Integration Message Broker application that is simulating a legacy application.

Note: Optionally you may add the loopback message flow to your broker execution group. (This flow is provided with the IBM WebSphere Business Integration Message Broker adapter sample message flows.) Adding the loopback message flow will loop any message sent from the adapter back to the adapter after being processed by the WebSphere Business Integration Message Broker application.

Once the WebSphere Business Integration Message Broker application delivers a message to the input queue, the adapter retrieves it and attempts to convert it into a `Sample_WBIMB_LegacyItem_XMLDoc` business object. The key to having the adapter poll the message is to ensure that the message format equals the value associated with the `Sample_WBIMB_LegacyItem_XMLDoc` business object in meta-object `Sample_WBIMB_MO_Config`. If it identifies the message format as `LI_UP`, the adapter then calls the data handler to convert the message to business object `Sample_WBIMB_LegacyItem_XMLDoc` with verb `Update`. The newly created business object is subsequently delivered to the WBI Broker and then re-delivered to the Visual Test Connector.

8. **Confirm message delivery** If you've performed all the above steps successfully, you should have a working scenario that enables the WBI Message Broker adapter to retrieve messages and convert them to `Sample_WBIMB_LegacyContact` business objects, and to convert `Sample_WBIMB_LegacyContact` business objects to messages.

Index

Special characters

(object verb) Retrieve 4

A

ABON_APPRESPONSETIMEOUT 39
adapter 1
 broker compatibility 11
 dependencies 12
 installing 11
 installing the adapter and related files 13
 interaction with WBI Message Broker 4
 overview of processing 4
 starting 38
 stopping 39
 WebSphere MQ compatible versions 12
 WebSphere MQ Java client libraries requirement 12
Adapter Development Kit (ADK) 2
adapter environment 11
adapter framework 1
AIX 12
APP_RESPONSE_TIMEOUT 40
AppID 53
application timeout 39
ApplicationPassword property 82
ApplicationUserName property 82
ArchiveQueue 9
ArchiveQueue property 83
archiving 9
asynchronous
 message request 4, 5
 verbs supported 5

B

broker compatibility 11
Business Object Designer 44
business objects 43
 creating 43
 modifying 45
 supported verbs 4

C

CCSID property 83
Channel property 83
collaboration
 request processing 4
configuration
 typical with WBI Message Broker and InterChange Server 3
ConfigurationMetaObject property 83
configuring
 data handler 57
 for a sample scenario 89

configuring (*continued*)
 the connector 17
connector
 configuration 17
 distinct from adapter 2
 running 37
 supported verbs 4
connector controller 2
connector framework 2
connector not active 40
CONNECTOR_NOT_ACTIVE 40
connector-specific properties 81
correlationID 6, 45
Create (object verb) 4
Creating objects
 task roadmap 43

D

data handler
 and message request 4
 configuring 57
 mapping to input queues 52
 specifying 57
 task roadmap for configuring 57
DataHandlerClassName 48
DataHandlerClassName property 83
DataHandlerConfigMO 48
DataHandlerConfigMO property 83
DataHandlerMimeType 48
DataHandlerMimeType property 83
DefaultVerb property 83
Delete (object verb) 4
DeliveryCount 53
DeliveryMode 53
Destination 53
doVerbFor() method 4
dynamic meta-object 47
dynamic meta-object header
 attributes 53
dynamic meta-objects
 creating 52

E

EnableMessageProducerCache property 83
ErrorQueue property 84
errors
 application timeout 39
 connector not active 40
 data handler conversion 40
 handling 39
 JMS properties 40
 overloading input formats 40
 unsubscribed business object 40
event 7
event polling 8
Event processing
 overview 7

Exists (object verb) 4
Expiration 53

F

fail on startup 8
feedback codes
 in response message 6
format
 conversion initiated by event polling 3

G

gotAppEvents() method 7, 8, 47
GroupID 53
GroupSeq 53

H

HostName property 84
HP-UX 12

I

ignore 9
in-progress queue 7, 8
InDoubtEvents 8
InDoubtEvents property 84
input queues
 mapping to data handlers 52
InputFormat 49
InputQueue 49
InputQueue property 84
installed UNIX file structure for the connector 15
installed Windows file structure for the adapter 14
installing
 task roadmap 11
 the integration broker 11
 verifying 13
integration broker 2

J

Java™ Message Service (JMS) 4
Java Virtual Machine 13
Java™ Message Service (JMS) 3
JMS
 meta-object properties 50
JMS headers
 and dynamic meta-object attributes 54
JMS properties 54
 errors with 40
JMSProperties 53

L

Locale-dependent data 13
localized data 13
log error 9

M

mapping data handlers to input queues 52
message
 routing initiated by event polling 3
message descriptor header.
 See MQMD
message flow
 modifying 58
message request
 and data handler 4
 asynchronous 4
 asynchronous processing 5
 overview 4
 processing 4
 synchronous 4
 synchronous processing 5
message selector 45
MessageID 53
meta-object attributes
 read versus rite 53
meta-objects 43
 and JMS headers in dynamic 54
 creating 47
 creating dynamic 52
 creating static 50
 difference between static and dynamic 47
 dynamic
 population during polling 53
 header attributes in dynamic 53
 properties 48
 steps for creating dynamic 56
modifying a message flow 58
MQMD
 Expiry 5
 Format 5
 message request field values 5
 MsgType 5
 Persistence 5
 ReplyToQ 5
 Report 5
 response message descriptor header 6

N

NO_SUBSCRIPTION_FOUND 40

O

Object Discovery Agent 44
OutputFormat 49
OutputQueue 49
overloading input formats 40

P

pollForEvents() 8
pollForEvents() method 7
Port property 85
Priority 53

Q

queues
 defining for a sample scenario 89

R

recovery 8
Redelivered 53
ReplyToQueue 6, 53
 synchronous processing 5
ReplyToQueue property 85
reprocess 9
request message
 MQMD field values 5
requests.
 See message message request, request processing
response messages
 filtering with a message selector 45
response_selector 45
ResponseTimeout 49
 synchronous processing 5
retrieval 8
Retrieve by Content (object verb) 4
running the adapter
 task roadmap 37
running the connector 37

S

selectorstring 45
SessionPoolSizeForRequests property 85
Solaris 12
starting the connector 38
startup files
 configuring 37
static meta-object 47
static meta-objects
 creating 50
steps for modifying a message flow 58
stopping the connector 39
synchronous
 message request 4, 5
 verbs supported 5

T

task roadmap 1
tasks
 configuring the data handler 57
 creating objects 43
 installing 11
 running the computer 37
terminology 1
TimeoutFatal 40, 49
TimeStamp 53
tracing 41
Type 53

U

unsubscribed business object 40
UnsubscribedQueue 40
UnsubscribedQueue property 85
Update (object verb) 4
UseDefaults property 85
UserID 53

V

verbs
 supported 4
 supported for asynchronous request 5
 supported for synchronous request 5
verifying installation 13

W

WBI Message Broker
 interaction with adapter 4
 native support for XML 44
WebSphere Application Server Enterprise
 adapter-compatible versions 12
WebSphere Business Integration Adapter Framework
 adapter-compatible versions 11
WebSphere business integration system 2
WebSphere Integration Message Broker, Version 2.2 3
WebSphere InterChange Server
 adapter-compatible versions 12
WebSphere MQ
 adapter compatible versions 12
WebSphere MQ Java client libraries 12
WebSphere MQ queue manager 4
Windows 2000 12

X

XML
 and WBI Message Broker support 44
 recommended format for use with adapter 3
 steps for modifying a message flow 58
XML data handler 57
XML ODA 44

Notices

IBM may not offer the products, services, or features discussed in this document in all countries. Consult your local IBM representative for information on the products and services currently available in your area. Any reference to an IBM product, program, or service is not intended to state or imply that only that IBM product, program, or service may be used. Any functionally equivalent product, program, or service that does not infringe any IBM intellectual property right may be used instead. However, it is the user's responsibility to evaluate and verify the operation of any non-IBM product, program, or service.

IBM may have patents or pending patent applications covering subject matter described in this document. The furnishing of this document does not give you any license to these patents. You can send license inquiries, in writing, to:

IBM Director of Licensing
IBM Corporation
North Castle Drive
Armonk, NY 10504-1785
U.S.A.

The following paragraph does not apply to the United Kingdom or any other country where such provisions are inconsistent with local law:

INTERNATIONAL BUSINESS MACHINES CORPORATION PROVIDES THIS PUBLICATION "AS IS" WITHOUT WARRANTY OF ANY KIND, EITHER EXPRESS OR IMPLIED, INCLUDING, BUT NOT LIMITED TO, THE IMPLIED WARRANTIES OF NON-INFRINGEMENT, MERCHANTABILITY OR FITNESS FOR A PARTICULAR PURPOSE. Some states do not allow disclaimer of express or implied warranties in certain transactions, therefore, this statement may not apply to you.

This information could include technical inaccuracies or typographical errors. Changes are periodically made to the information herein; these changes will be incorporated in new editions of the publication. IBM may make improvements and/or changes in the product(s) and/or program(s) described in this publication at any time without notice.

Any references in this information to non-IBM Web sites are provided for convenience only and do not in any manner serve as an endorsement of those Web sites. The materials at those Web sites are not part of the materials for this IBM product and use of those Web sites is at your own risk.

IBM may use or distribute any of the information you supply in any way it believes appropriate without incurring any obligation to you.

Licensees of this program who wish to have information about it for the purpose of enabling: (i) the exchange of information between independently created programs and other programs (including this one) and (ii) the mutual use of the information which has been exchanged, should contact:

IBM Burlingame Laboratory Director
IBM Burlingame Laboratory
577 Airport Blvd., Suite 800

Burlingame, CA 94010
U.S.A

Such information may be available, subject to appropriate terms and conditions, including in some cases, payment of a fee.

The licensed program described in this document and all licensed material available for it are provided by IBM under terms of the IBM Customer Agreement, IBM International Program License Agreement, or any equivalent agreement between us.

Any performance data contained herein was determined in a controlled environment. Therefore, the results obtained in other operating environments may vary significantly. Some measurements may have been made on development-level systems and there is no guarantee that these measurements will be the same on generally available systems. Furthermore, some measurement may have been estimated through extrapolation. Actual results may vary. Users of this document should verify the applicable data for their specific environment.

Information concerning non-IBM products was obtained from the suppliers of those products, their published announcements or other publicly available sources. IBM has not necessarily tested those products and cannot confirm the accuracy of performance, compatibility or any other claims related to non-IBM products. Questions on the capabilities of non-IBM products should be addressed to the suppliers of those products.

This information may contain examples of data and reports used in daily business operations. To illustrate them as completely as possible, the examples may include the names of individuals, companies, brands, and products. All of these names are fictitious and any similarity to the names and addresses used by an actual business enterprise is entirely coincidental.

All statements regarding IBM's future direction or intent are subject to change or withdrawal without notice, and represent goals and objectives only.

COPYRIGHT LICENSE

This information may contain sample application programs in source language, which illustrates programming techniques on various operating platforms. You may copy, modify, and distribute these sample programs in any form without payment to IBM, for the purposes of developing, using, marketing or distributing application programs conforming to the application programming interface for the operating platform for which the sample programs are written. These examples have not been thoroughly tested under all conditions. IBM, therefore, cannot guarantee or imply reliability, serviceability, or function of these programs.

Programming interface information

Programming interface information, if provided, is intended to help you create application software using this program.

General-use programming interfaces allow you to write application software that obtain the services of this program's tools.

However, this information may also contain diagnosis, modification, and tuning information. Diagnosis, modification and tuning information is provided to help you debug your application software.

Warning: Do not use this diagnosis, modification, and tuning information as a programming interface because it is subject to change.

Trademarks and service marks

The following terms are trademarks or registered trademarks of International Business Machines Corporation in the United States or other countries, or both:

IBM
the IBM logo
AIX
CrossWorlds
DB2
DB2 Universal Database
Domino
Lotus
Lotus Notes
MQIntegrator
MQSeries
Tivoli
WebSphere

Microsoft, Windows, Windows NT, and the Windows logo are trademarks of Microsoft Corporation in the United States, other countries, or both.

MMX, Pentium, and ProShare are trademarks or registered trademarks of Intel Corporation in the United States, other countries, or both.

Java and all Java-based trademarks are trademarks of Sun Microsystems, Inc. in the United States, other countries, or both.

Other company, product or service names may be trademarks or service marks of others.



WebSphere Business Integration Adapter Framework V2.4.0



Printed in USA