

WebSphere® Extended Deployment Operations Optimization



Version 6.1

Quick Start Guide

This document describes a typical installation of WebSphere Extended Deployment Operations Optimization Version 6.1.



National Language Version: To obtain the Quick Start Guide in other languages, print the Portable Document Format (PDF) from the CD.

Product Overview

WebSphere Extended Deployment Operations Optimization Version 6.1 represents on demand capabilities in an extended environment. Use this product to enhance operational efficiency by deploying dynamic operations, service high-volume transactional workloads with linear scalability and near 100% availability, or manage large scale, continuously available WebSphere Application Server environments.

Additionally, WebSphere Extended Deployment Operations Optimization provides application server virtualization, resource management, and a host of advanced operational facilities, such as performance visualization, health monitoring, and application versioning. New centralized workload management and health policy support has been added for PHP Hypertext Preprocessor (PHP) servers and support expanded for other application servers including workload management, application provisioning, health monitoring, and additional administration features. This will enable a more consistent approach to achieving service levels and health policies across a heterogeneous set of application servers.

1 Step 1: Access your software and documentation



If you download your product from Passport Advantage, follow the instructions in the download document:

<http://www.ibm.com/support/docview.wss?rs=3023&uid=swg27009198>

For complete documentation, including installation instructions, see the WebSphere Extended Deployment Operations Optimization Information Center at <http://publib.boulder.ibm.com/infocenter/wxdinfo/v6r1/index.jsp>.

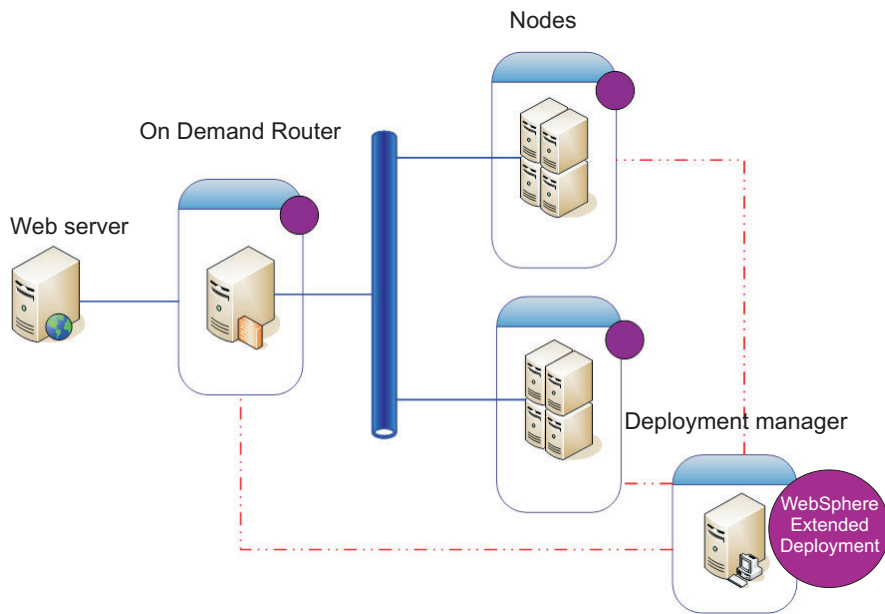
2 Step 2: Evaluate your hardware and system configuration



See the detailed system requirements document at <http://www.ibm.com/software/webservers/appserv/extend/requirements/>.

3 Step 3: Review the base architecture

The following diagram presents a simple product environment.



4 Step 4: Install the product

Install WebSphere Extended Deployment Operations Optimization Version 6.1.

For additional assistance, see the following topics in the Information Center:

- **Planning the installation**
- **Installing the product**

More Information

For additional technical resources, see the WebSphere Extended Deployment Operations Optimization installation documentation and the readme file on the CD.