

**WebSphere.** software

## IBM WebSphere Application Server Community Edition, Version 2.0

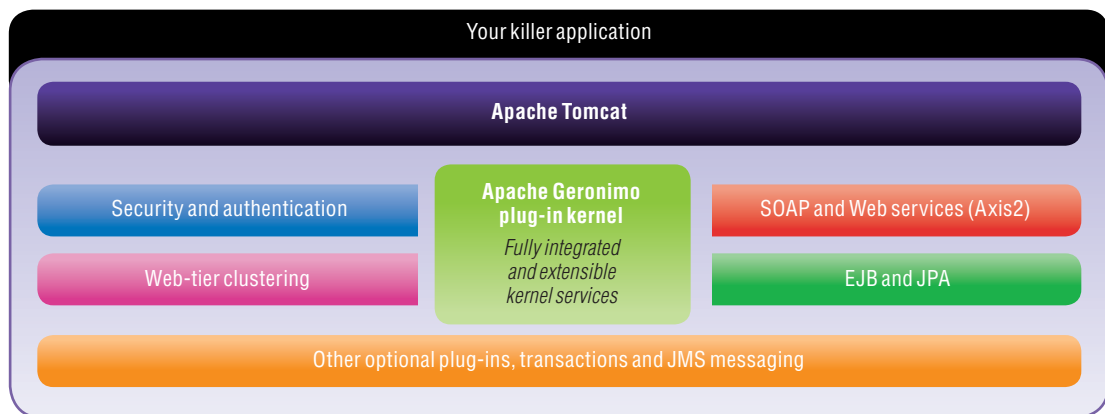
### Highlights

- **Delivers a lightweight JEE5 application server based on open source technology from The Apache Software Foundation**
- **Gives you readily accessible, innovative technology with no up-front costs**
- **Includes features such as Web-tier clustering, simplified, directory-based hot deployment and enhanced Java EE migration capabilities**
- **Offers trusted technical support from IBM, the market leader in application server middleware**
- **Provides a clear path to more-advanced capabilities, such as SOA, through the WebSphere Application Server family**
- **Offers complimentary technical support through e-mail for 30 days**

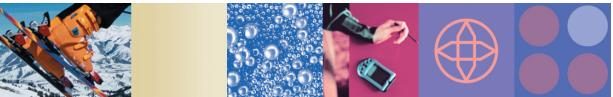
Using open source technology to develop and deploy your applications can provide significant benefits. It can help increase flexibility and reduce costs — and provide quick and easy access to technology that enables you to accelerate development and deployment cycles.

IBM WebSphere® Application Server Community Edition, Version 2.0 is a lightweight Java™ Platform, Enterprise Edition 5 (JEE5) application server built on Apache Geronimo, the open source application server project at The Apache Software Foundation.

**IBM WebSphere  
Application Server  
Community Edition**



IBM WebSphere Application Server Community Edition pre-integrates commonly needed services on top of Apache Tomcat, helping to save you time and money.



## What's new in WebSphere Application Server Community Edition, Version 2.0

With this release, new features and enhancements have been added, including:

- **Java EE 5 compatible**, to implement the latest Java enterprise standards and dramatically improve developer productivity.
- **Updated Web application technologies**, including Servlet 2.5, JavaServer Pages (JSP) 2.1, JavaServer Pages Standard Tag (JSTL) 1.2 and JavaServer Face (JSF) 1.2 to simplify building Web-based user interfaces and applications.
- **New version of Web services stack**, including Java application programming interface (API) for XML-Web Services (JAX-WS)/JAX-Binding (JAXB) 2.0, WS-Metadata 2.0, Java Specification Request (JSR)-109 1.2 and Streaming API for XML (StAX) 1.0 to improve Web-services development productivity and enhance interoperability for easy integration with your SOA.
- **Updated Java EE enterprise application technologies**, including Java Persistence API (JPA), Version 1.0 and EJB, Version 3.0 to simplify component and persistence models and streamline development of persistence code.
- **Additional platform supports**, including Asianux Server, Red Hat Fedora and Ubuntu to increase deployment flexibility.
- **Updated and enhanced sample applications and documentation**, to simplify application development and deployment.
- **An Eclipse plug-in**, now supporting the Eclipse Web Tools Platform, Version 2.0, for creating and debugging your WebSphere applications.

It is designed to help you accelerate your development and deployment efforts by harnessing the latest innovations from the open source community and providing a readily accessible and flexible foundation for building Java applications.

WebSphere Application Server Community Edition offers a comprehensive solution — the benefits of an open source model along with options for fee-based support from IBM. And because the product is part of the award-winning IBM WebSphere product family, you can be confident that your requirements can be met as your business needs evolve.

## World-class support

WebSphere Application Server Community Edition is backed by IBM's team of expert support professionals and developers. As a result, you can reap the benefits of open source technology with the confidence that comes with receiving reliable assistance and timely problem resolution from a company you can trust. Three support options — entry, enhanced and elite — enable you to choose the support level most appropriate for your business and technical needs.

Also, now, registered downloaders can receive 30 days of technical support through e-mail, at no charge. The WebSphere Application Server Community Edition trial-support program provides complimentary online support designed to help you with problems or questions regarding the application server. Support is limited to English only on Microsoft® Windows® and Linux® platforms. To learn more, visit [ibm.com/websphere/wasce](http://ibm.com/websphere/wasce).

### **Get started with no up-front costs**

Getting started with WebSphere Application Server Community Edition is quick and easy. Its size makes it quick to download, so you can get the software up and running — and show tangible results — fast. Also, you can use WebSphere Application Server Community Edition through your development, testing and production cycles at no cost to you unless you choose to purchase the optional technical support.

### **Pre-integrated to help save you time and money**

WebSphere Application Server Community Edition includes the baseline components that you need to deploy your applications in one integrated package. To help ensure that the components work together, IBM continually tests and tracks the interdependencies between them, which helps eliminate the need for you to undertake this tedious and time-consuming task on your own.

Also, pre-integration with the Apache Derby database helps deliver a full-featured, robust, small-footprint database server that can be used during development and deployment stages.

### **Customize to suit your business needs**

Because WebSphere Application Server Community Edition uses open source technology as its foundation, you have easy access to the source code developed by the community. You can extend capabilities with custom features, or choose to remove unnecessary components to further streamline the footprint. Furthermore, because WebSphere Application Server Community Edition supports a plug-in architecture, you can extend the functionality of the server as the need arises.

### **Focus on your core capabilities**

Using WebSphere Application Server Community Edition means that you have a framework for building higher-level features. If you're a solution provider, you can focus your efforts on building differentiated value for your customers rather than rewriting core infrastructure. If you're a developer, WebSphere Application Server Community Edition can accelerate development and allow you to quickly show tangible results.

### **A clear path to advanced capabilities**

Using WebSphere Application Server Community Edition enables you to access the comprehensive and proven portfolio of IBM WebSphere middleware products. IBM can provide a clear path to advanced capabilities, such as service oriented architecture (SOA), through its WebSphere software portfolio as your needs grow over time.

### **Liberal product license**

WebSphere Application Server Community Edition, released under the IBM License Agreement for Non-Warranted Programs (ILAN), can be used at no charge in development, testing and production. You can make unlimited copies of the software for internal use. Because WebSphere Application Server Community Edition uses open source technology as its foundation, you can obtain the source for these components through the open source community. And should the need arise, you can make modifications as allowed through the component license

## Product features

WebSphere Application Server Community Edition includes a range of features designed to help you meet your organization's business goals. These features include:

### *Java SE, Version 5 support*

Support for Java Platform, Standard Edition (Java SE), Version 5.0 makes it possible for your WebSphere Application Server Community Edition applications to take advantage of the many language innovations in this version, including annotations, enumerated types, generics and improved performance. You can also now use components from other vendors that require Java SE, Version 5 as part of your applications.

### *Easy-to-use and robust Java EE 5 programming model*

Java EE 5 focuses on making development easier but retains the richness of the J2EE 1.4 platform that has established Java EE as the premier platform for Web services and enterprise application development. WebSphere Application Server Community Edition uses technology from Apache Geronimo, the open source application server project at The Apache Software Foundation. Apache Geronimo brings together best-of-breed technologies across the broader open source community to support

Java EE 5 specifications, including:

- *Apache Tomcat to support servlets and JSP*
- *Apache MyFaces to support JSF*
- *Apache OpenEJB to support Enterprise JavaBeans (EJB)*
- *Apache OpenJPA to support Java Persistence API (JPA)*
- *Apache Axis/Axis2 to support Web services*
- *Apache ActiveMQ to support Java Message Service (JMS)*
- *TranQL to support Java Database Connectivity (JDBC)*
- *HOWL (ObjectWeb) to support Java Transaction API (JTA)*
- *Apache Yoko to support JDK independent ORB*

### *Eclipse plug-in with WebSphere Application Server family portability*

The Eclipse plug-in for WebSphere Application Server Community Edition helps you take advantage of the Eclipse technology-based Web Tools Platform, Version 2.0. This plug-in offers a simple development environment for creating and debugging your WebSphere Application Server Community Edition applications. Using the WebSphere

Application Server Community Edition JEE profile rules for Eclipse Test and Performance Tools Platform (TPTP), you can help ensure that the applications you create are portable and deliver increased flexibility.

### *Web-tier clustering and load balancing*

Web-tier clustering helps improve reliability for your applications by providing failover support. This feature also enables you to scale (up or down) and customize according to your business needs. You can achieve load balancing when you use WebSphere Application Server Community Edition in conjunction with Apache HTTP Server and the mod-jk connector or mod-proxy support for Apache JServe Protocol (AJP).

### *Flexible deployment options*

Flexible deployment options and an integrated development environment (IDE) enable you to rapidly develop and deploy multiple configurations—whether as stand-alone servers or as endpoints in a WebSphere SOA infrastructure. Version 2.0 adds the ability to redeploy existing deployed applications from the console and the command line, hot deployment for compressed Java Archive (JAR) files, and in-place deployment for exploded JEE modules.

### Database support

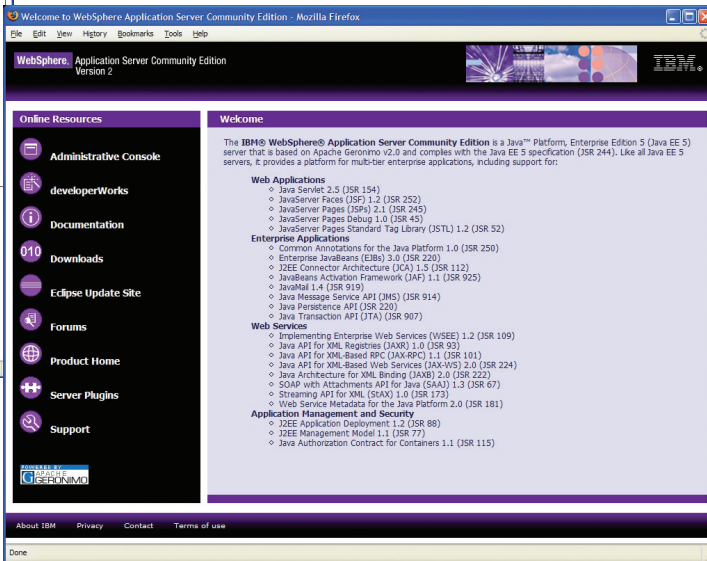
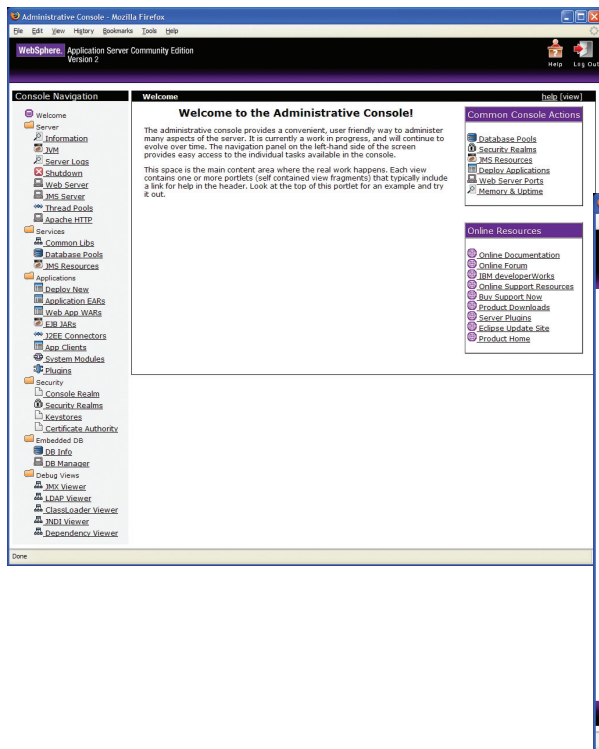
The embedded, open source, Apache Derby database delivers a robust, small-footprint database server with full transactional capability that is simple to deploy and helps reduce the cost of Web-based and embedded applications. If you want external database access, WebSphere Application Server Community Edition also provides driver support for IBM DB2® Universal Database™, Oracle, Microsoft SQL Server and MySQL.

### Runtime customization

You can tailor WebSphere Application Server Community Edition to your needs and help improve performance while helping to save system resources by selectively enabling and disabling specific components of WebSphere Application Server Community Edition at run-time.

### User management

WebSphere Application Server Community Edition features centralized user management by unifying all applications running on the platform under a shared, standards-based security framework based on Java Authorization Contract for Containers (JACC). This capability virtually eliminates the complexity of setting up and maintaining separate user-management systems for your applications. WebSphere Application Server Community Edition also supports Lightweight Directory Access Protocol (LDAP) authentication.



An easy-to-use, browser-based administrative console eases the burden of managing and monitoring your application server and related resources.

### *Centralized configuration and control*

WebSphere Application Server Community Edition delivers an easy-to-use administrative console application that lets you manage and monitor the application server and related resources. The updated console in Version 2.0 is even easier to use and provides more valuable information for monitoring your server and your applications.

### **A flexible business infrastructure**

WebSphere Application Server Community Edition is a member of the WebSphere Application Server family of products. With its alternative business model and small footprint, WebSphere Application Server Community Edition offers increased choice and flexibility. Get started today and, as your needs grow, IBM can offer a path to more advanced capabilities, such as SOA, through other WebSphere Application Server products.

### **For more information**

To learn more about IBM WebSphere Application Server Community Edition, contact your IBM representative or IBM Business Partner, or visit:

[ibm.com/websphere/wasce](http://ibm.com/websphere/wasce)

To learn more about services available for WebSphere Application Server Community Edition, contact your IBM representative or IBM Business Partner, or visit:

[ibm.com/websphere/wasce/services](http://ibm.com/websphere/wasce/services)

To learn more about and compare all the IBM WebSphere Application Server products, visit:

[ibm.com/software/webservers/appserv/was/](http://ibm.com/software/webservers/appserv/was/)

To join the Global WebSphere Community, visit:

[www.websphere.org](http://www.websphere.org)

## Optional fee-based IBM support offerings for WebSphere Application Server Community Edition

Technical support teams from IBM deliver support for WebSphere Application Server Community Edition as an annual subscription, priced per server. The three tiers of support are entry, enhanced and elite. The following table summarizes the support offerings.

<b>IBM Support for WebSphere Application Server Community Edition</b>			
	<b>Entry</b>	<b>Enhanced</b>	<b>Elite</b>
<b>Technical support</b>			
Support hours (in local time zones)	8 a.m. to 5 p.m. Monday through Friday	8 a.m. to 5 p.m. Monday through Friday	24x7x365 (Severity 1)
Voice support		X	X
Electronic support	X	X	X
Response time	8 business hours	4 business hours	2 business hours <sup>1</sup>
Unlimited technical-support incidents	X	X	X
Number of technical contacts who can contact IBM support	1	2	Unlimited
<b>Developer assistance<sup>2</sup></b>			
Number of application design, configuration and tuning incidents	0	3	5
Expert application design and architecture assistance		X	X
Deployment and configuration assistance		X	X
Performance-tuning assistance		X	X
<b>Defect resolution</b>			
Defect patch fixes available online	X	X	X
Critical defect-workaround development	X	X	X
Defect fixes submitted to applicable community projects	X	X	X
Fixes provided for older supported releases	X	X	X
<b>Learning and self-service</b>			
Online documentation	X	X	X
Access to IBM developerWorks® technical content, newsletters, Web broadcasts and forums	X	X	X
Professional services offerings available (at additional charge)	X	X	X
Pricing metric <sup>3</sup>	Per server	Per server	Per server

1. Faster response times available with special bid.

2. Covers specific and short-duration questions or issues, and is not intended to cover issues requiring or best resolved by having extended program-design reviews.

3. Up to four processors per server; otherwise, a special bid is required.



---

## IBM WebSphere Application Server Community Edition, Version 2.0 at a glance

---

### Hardware requirements

- Disk space: Minimum 120 MB available disk space (does not include JDK, logging or deployed applications)
- Memory: Minimum 140 MB physical memory (256 MB or more recommended, depending on deployed applications)

### Software requirements

- *IBM AIX® operating environment*
  - AIX, Version 5 with Update 3 and Maintenance Level (ML) 4 or later
- *Linux operating environment (one of the following)*
  - Asianux Server, Version 3 (x86-32 and x86-64)
  - Red Hat Enterprise Linux, Version 4 with Update 4 or 5 (x86-32, x86-64 and IBM System p™)
  - Red Hat Enterprise Linux, Version 5 (x86-32, x86-64 and System p)
  - Novell SUSE Linux Enterprise Server, Version 9 with Service Pack (SP) 2 or 3 (x86-32, x86-64 and System p)
  - Novell SUSE Linux Enterprise Server, Version 10 with or without Service Pack (SP) 1 (x86-32 and x86-64 and IBM POWER™)
- Sun Solaris operating environment
  - Solaris 10 (SPARC only)
- *Microsoft Windows operating environment (one of the following)*
  - Windows XP Professional with SP2 (supported for application design, development and testing only; not supported for production use) (x86-32 and x86-64)
  - Windows 2003 Server with SP1 or SP2 (x86 only)
  - Windows 2003 Server x64 with SP1 or SP2 (x86-64 only)

---

For a complete list of recommended and compatible operating systems, please see [ibm.com/software/webservers/appserv/community/sysreq/](http://ibm.com/software/webservers/appserv/community/sysreq/) and click **Detailed system requirements**.

© Copyright IBM Corporation 2007

IBM Corporation  
Software Group  
Route 100  
Somers, NY 10589  
U.S.A.

Produced in the United States of America  
09-07

All Rights Reserved

AIX, DB2, DB2 Universal Database, developerWorks, IBM, the IBM logo, POWER, System p and WebSphere are trademarks of International Business Machines Corporation in the United States, other countries or both.

Microsoft and Windows are trademarks of Microsoft Corporation in the United States, other countries or both.

Java and all Java-based trademarks are trademarks of Sun Microsystems, Inc. in the United States, other countries or both.

Linux is a registered trademark of Linus Torvalds in the United States, other countries or both.

Other company, product or service names may be trademarks or service marks of others.

References in this publication to IBM products or services do not imply that IBM intends to make them available in all countries in which IBM operates.