

# IBM Tivoli Continuous Data Protection for Files

## Highlights

### Provides invisible, real-time file replication

- When a file is saved:
  - A copy is stored on local disk
  - Another copy can be sent to a file server or network attached storage (NAS)
  - Another copy can be sent to an IBM Tivoli Storage Manager server or a WebDav-enabled Web server
- Provides small footprint
- Installs and configures in minutes
- Requires no server component
- Operates in the background — no user intervention required
- Tolerates transient networks
- Provides versioning of files for point-in-time recovery
- Interoperates with third-party traditional backup solutions

### File vault

- Retains files for predefined lengths of time
- Allows easy configuration — zero user interface
- Provides write protection — once a file is vaulted it cannot be modified or deleted until the specified time

### Continuous protection, because once a day is not enough

Businesses today are increasingly concerned with protecting their data. Losing key business information can hamper productivity, delay projects, and divert resources and calls to the help desk. It can also harm organizations when they face regulatory scrutiny. In fact, many businesses today are legally required to use formal data protection.

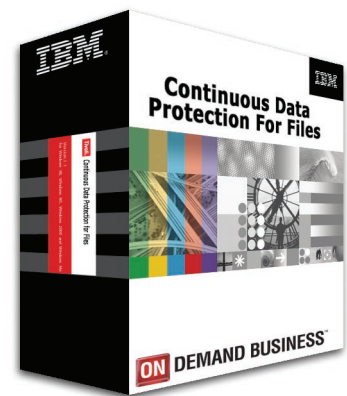
Data corruption is an increasing concern, and companies need better recovery point capabilities. Often the most valuable files are those users are working on currently, and being able to roll back to a point in time. In addition, companies need sophisticated policy-based data management that enables them to focus on data with the most business value.

Although most companies have implemented solutions for protecting

enterprise data, data residing on workstations and laptops is often under-protected — even though it amounts to 60 percent of all corporate data, according to some industry experts. This is particularly true where lost data can significantly impact productivity and viability.

### Protect key corporate information

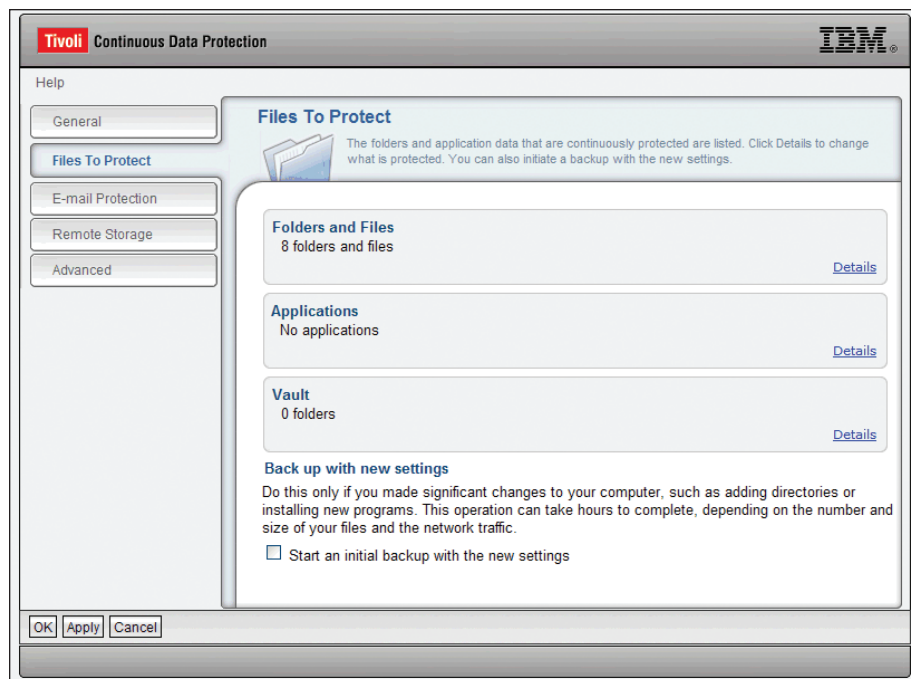
The newest phase in the evolution of file backup is continuous data protection, and that's where IBM Tivoli® Continuous Data Protection for Files comes in. It is



a real-time, continuous data protection solution specifically designed for file servers and user end points. Instead of waiting for a scheduled interval, Tivoli Continuous Data Protection for Files backs up your most important files the moment they are saved, in real time. What's more, it does this effortlessly and transparently, eliminating any backup window.

With Tivoli Continuous Data Protection for Files, you can specify as many as three target backup/replication areas for high-priority files: a local disk, a file server or NAS appliance, and a Tivoli Storage Manager server. These areas can capture file changes when they occur to help protect against corruption, file loss, system loss or a common accidental deletion.

Tivoli Continuous Data Protection for Files versions copies of the files to a local self-managed cache, deleting old versions to make room for new versions. In addition, it enables you to specify a remote file server or Tivoli Storage Manager for off-machine protection when a user is connected, so real-time backups still occur. Tivoli Storage Manager provides offsite copies of backup data for vaulting, auditable disaster recovery plan, and tape and media management.



Configure Tivoli Continuous Data Protection for Files for local, file server and Tivoli Storage Manager real-time protection.

### Help minimize recovery times and maximize the granularity of recoverable data

With Tivoli Continuous Data Protection for Files, you can help optimize recovery times for file servers and user end points. Typically a file server is backed up once a night, and the degree of difference between the recoverable data and the latest version of the file can be significant if many changes are made between backups. This degree of difference is known as the recovery point objective (RPO).

An option for protecting a file is to have Tivoli Continuous Data Protection for Files replicate changes to files. This meets the definition of continuous data protection established by the Storage Networking Industry Association (SNIA). When a file is modified, Tivoli Continuous Data Protection for Files can replicate to disk or tape (local or remote), according to the policy you set and how the solution is deployed. Users can easily restore the version(s) of the file they need, helping to minimize recovery times.

"Tivoli Continuous Data Protection software automatically and reliably backs up data on employee desktop and notebook systems. As a result, it's eliminated the time our developers and IT administrator spent handling backup and recovery processes. It has also allowed our employees to recover data quickly so they can keep working."

— *Mark LaForest*  
*Senior Vice President, Operations*  
*Terason*

### **Fit your environment without burdening your administrators**

You can use Tivoli Continuous Data Protection for Files in a variety of environments, including remote offices, enterprise desktops and file servers. It is ideal for professionals who have critical files on their system that need protection continuously. It not only helps minimize data loss, it can also help drive productivity.

You'll also find that Tivoli Continuous Data Protection for Files is easy to configure and deploy. The solution allows for silent installation/configuration and basic push capabilities. Updated versions of Tivoli Continuous Data Protection for Files or centralized configurations and policies can also be automatically updated from a central location.

What's more, users can take advantage of the software's vault features to secure files — without administrator intervention. For instance, users can simply create folders and define a length of time for file retention.

Then they can drag-and-drop, copy or save files to the appropriate defined folder. Those files cannot be deleted or altered for the defined time period.

In summary, Tivoli Continuous Data Protection for Files can help you:

- Optimize backup resource utilization by reducing or eliminating backup times.
- Optimize RPO by providing real-time backups — so when a failure occurs, recovery can restore the latest version — and by reducing loss of productivity due to data loss.
- Improve recovery time objective (RTO) by enabling fast recovery from disk — local or remote.
- Improve IT staff productivity, allowing end users to easily recover data without IT involvement.

### **For more information**

To learn more about how Tivoli Continuous Data Protection for Files can enable you to protect important corporate data, contact your IBM representative or IBM Business Partner, or visit [ibm.com/software/tivoli/solutions/storage](https://ibm.com/software/tivoli/solutions/storage)



## System requirements

### Hardware requirements:

An Intel® Pentium® III processor with:

- 500MHz CPU or higher
- 384MB RAM or higher
- 100MB free disk space (plus user-configured amount of additional space for local file repository)
- 20MB download, 40MB install footprint

### Software requirements:

- Microsoft® Windows® 2000 Professional, Advanced Server, SP2 or later (x86-32)
- Windows 2003 Server, Standard, Enterprise, SP1 (x86-32)
- Windows XP Professional, SP1 or later (x86-32)
- Windows Vista™ Ultimate, Business (x86-32)

## Browser requirements

### One of the following:

- Internet Explorer, Version 6.0 and up (recommended)
- Mozilla Firefox, Version 1.5.0.7 and up

### About Tivoli software from IBM

Tivoli software provides a comprehensive set of offerings and capabilities in support of IBM Service Management, a scalable, modular approach used to deliver more efficient and effective services to your business. Meeting the needs of any size business, Tivoli software enables you to deliver service excellence in support of your business objectives through integration and automation of processes, workflows and tasks. The security-rich, open

standards-based Tivoli service management platform is complemented by proactive operational management solutions that provide end-to-end visibility and control. It is also backed by world-class IBM Services, IBM Support and an active ecosystem of IBM Business Partners. Tivoli customers and partners can also leverage each other's best practices by participating in independently run IBM Tivoli User Groups around the world — visit [www.tivoli-ug.org](http://www.tivoli-ug.org)

© Copyright IBM Corporation 2007

IBM Corporation  
Software Group  
Route 100  
Somers, NY 10589  
U.S.A.

Produced in the United States of America  
5-07  
All Rights Reserved

IBM, the IBM logo and Tivoli are trademarks of International Business Machines Corporation in the United States, other countries or both.

Intel and Pentium are registered trademarks of Intel Corporation in the United States and other countries.

Microsoft, Windows and Windows Vista are trademarks of Microsoft Corporation in the United States, other countries or both.

Other company, product and service names may be trademarks or service marks of others.

**Disclaimer:** The customer is responsible for ensuring compliance with legal requirements. It is the customer's sole responsibility to obtain advice of competent legal counsel as to the identification and interpretation of any relevant laws and regulatory requirements that may affect the customer's business and any actions the reader may have to take to comply with such laws. IBM does not provide legal advice or represent or warrant that its services or products will ensure that the customer is in compliance with any law or regulation.

**TAKE BACK CONTROL WITH** 