



【2009 IBM開發者大會】
開發，不只玩**真**的！


「Real Teams. Real Insights.
Real Results. ● REC」

Agile Development with
Rational Team Concert

IBM CDL Development Experience Sharing

Jeffrey Liu

Staff Software Engineer

A man in a white shirt and yellow tie is writing the word 'AGENDA' on a whiteboard. The background is a dark, solid color.

AGENDA

- Being Agile with Rational Team Concert
- Integrated Development Environment
- Mesurable **Productivity**

Being **Agile** with Rational Team Concert

Agile means different things to different people



Key Characteristics of Successful Agile Projects in IBM

Time-Boxed Iteration

Continuous Stakeholder Feedback

Self-Directed Team

Sustainable Pace



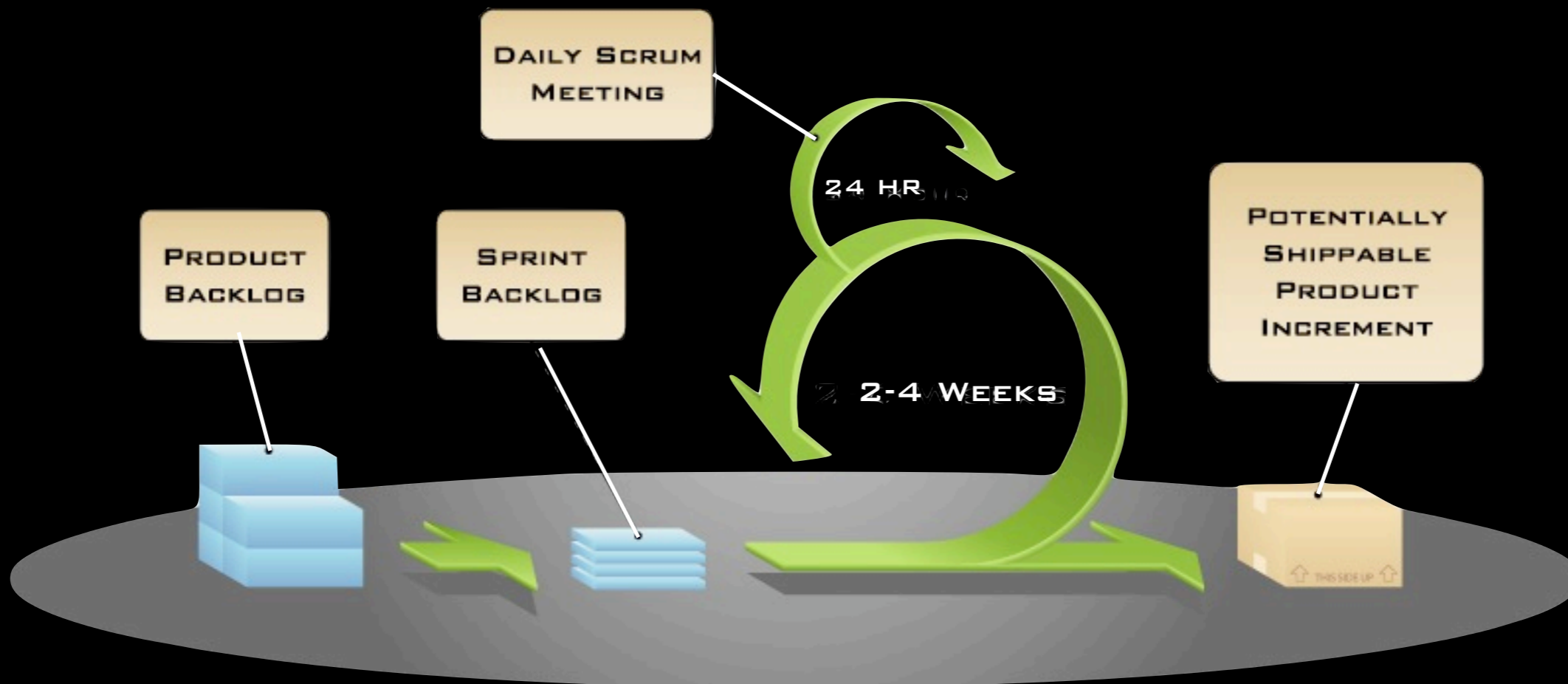
What is scrum ?



Fig. 6: The Scrum

The scrum is a pushing contest between two teams of eight players. The ball is fed in from the side by the scrumhalf and the team that drives their opponent backwards and hooks the ball out past the last foot of their own scrum wins possession. A scrum down is used to restart play after certain infractions such as a "knock on" or a forward pass.

<http://www.oberlin.edu/stuorg/womrugby>



ROLES

- PRODUCT OWNER
- SCRUM MASTER
- TEAM MEMBER

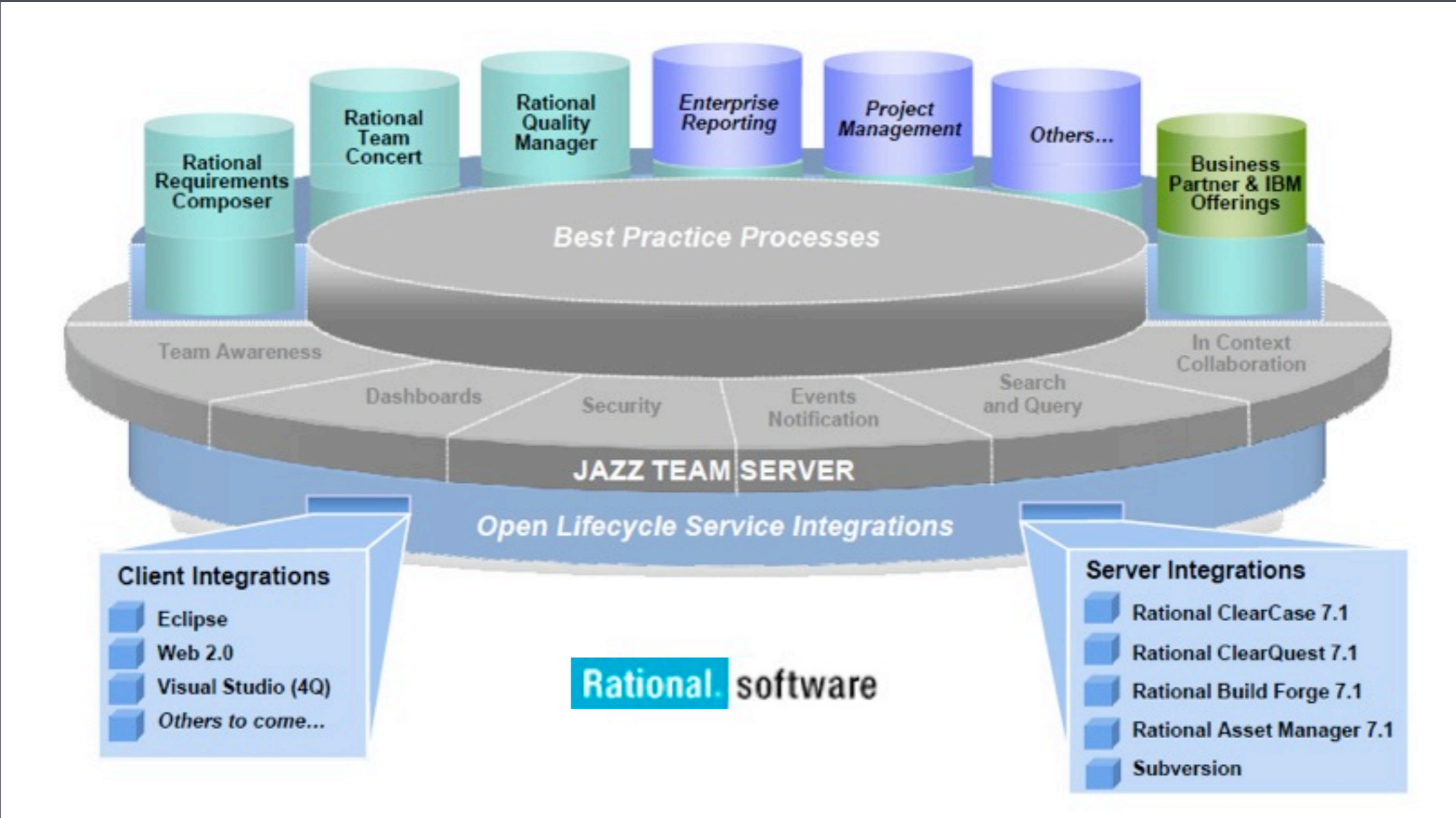
CEREMONIES

- SPRINT PLANNING
- SPRINT REVIEW
- SPRINT RETROSPECTIVE
- DAILY SCRUM

ARTIFACTS

- PRODUCT BACKLOG
- SPRINT BACKLOG

Jazz Architecture



MEMBER



Profile

Availability

Preference

TEAM



Team Members
Development Line
Process

PROJECT



Teams

Release

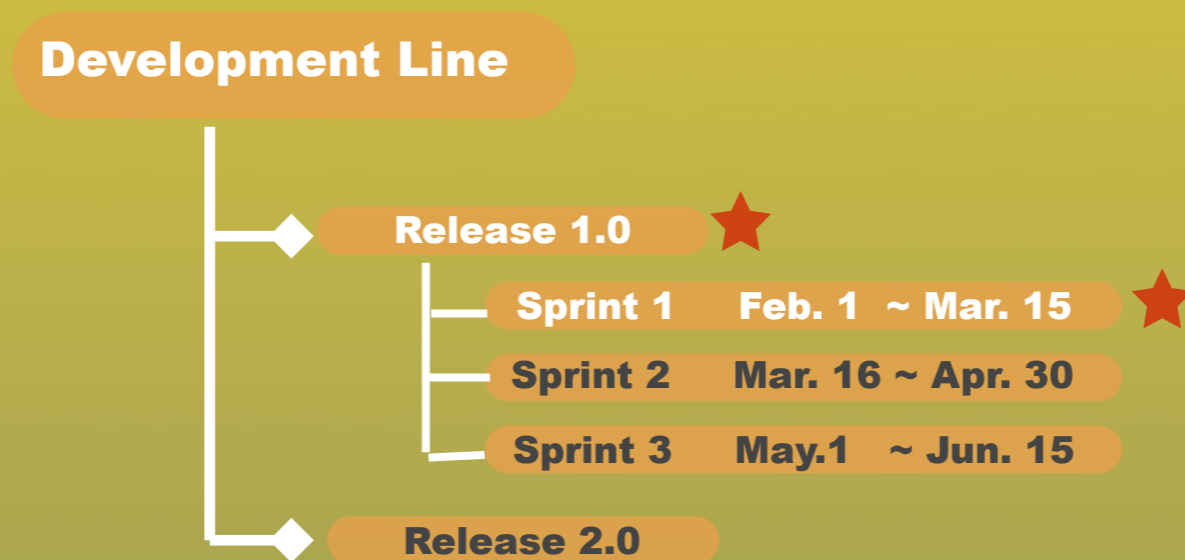
Process



Process

Naming	Product Backlog , Sprint
Roles	Scrum Master, Product Owner
Permissions	Only Scrum Mater Can create iteration plan
Precondition	All code must be code reviewed before checkin
Follow up	When bug fixed, QA will be notified to verify the fix

Release



“We had a consulting company define a methodology for us. We still have it on a shelf somewhere.

***A process needs to live in the tools** we use if it's ever going to be followed.”*

~ A Transportation company

Integrated Development Environment

One tool that rule them all

Software Dev. Pain Points



Separated Tools

Infrastructure Scripts

Manual Reports

What previously we have...





Bugzilla

facebook.



SUBVERSION

cruisecontrol.



Will It **Blend** ? That is the question.



WORK ITEM

- Each Work item will be associated with an **estimate**
- Along with team member's available resource, the progress and loading of each individual/team/iteration plan could be transparently tracked
- Supported notification mechanisms : mails , event views, RSS , pop-up

4.4 m1 Apr 19, 2008 - May 19, 2008		
Name	Team Area	Progress
JUnit Plan	JUnit Team	79 / 79 - h <input type="text" value="No Open Work Estimated"/> 0%

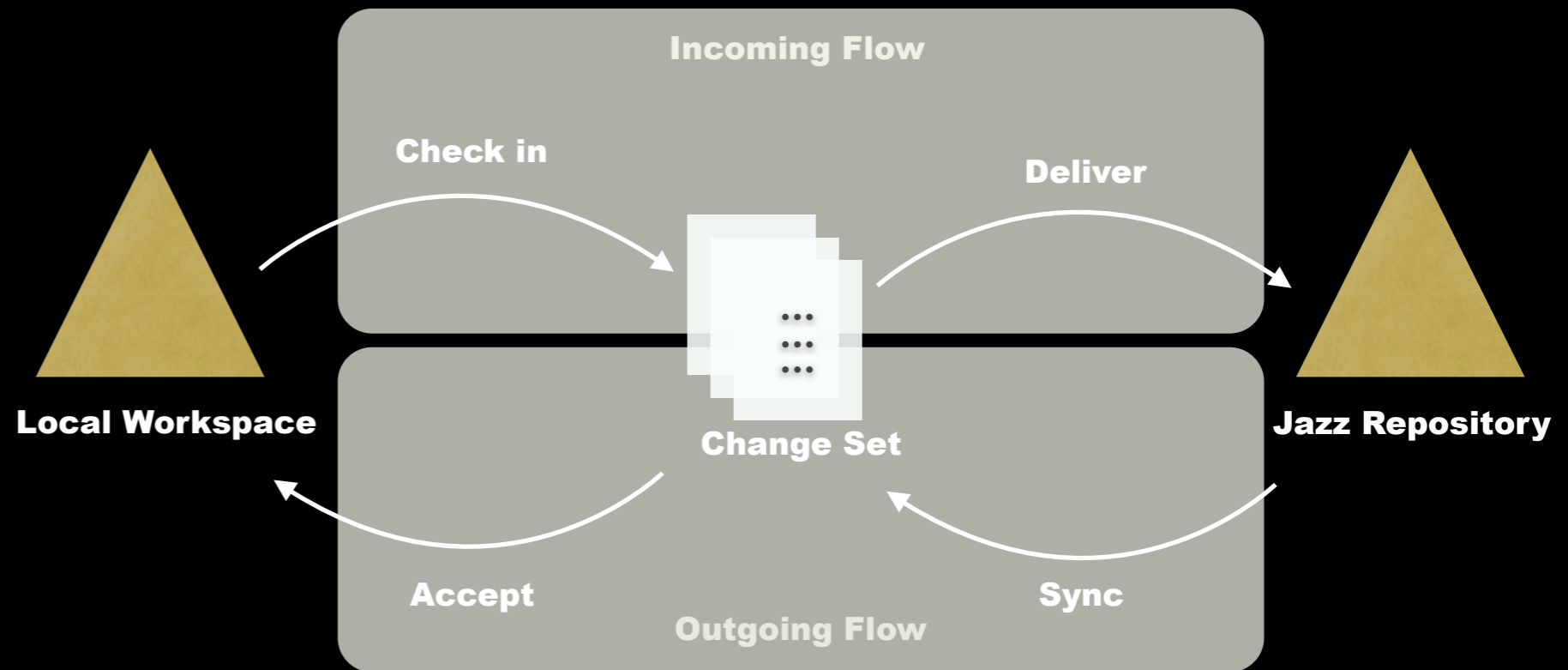
4.4 m2 May 19, 2008 - Jun 18, 2008		
Name	Team Area	Progress
JUnit Plan	JUnit Team	13 / 186 -47 h <input type="text" value="75%"/>

4.4 May 19, 2008 - no end date		
Name	Team Area	Progress
JUnit Release Plan	JUnit Team	0 / 0 h <input type="text"/>

	Bill Cassavelli Closed Items: 8 Open Items: 0	<input type="text" value="Progress: 25 / 25 - h"/> Estimated: -
	Jason Mitchell Closed Items: 1 Open Items: 0	<input type="text" value="Progress: 0 / 0 - h"/> Estimated: -
	Markus Kent Closed Items: 13 Open Items: 1	<input type="text" value="No Open Work Estimated"/> Progress: 54 / 54 - h Estimated: 0%

VERSION CONTROL

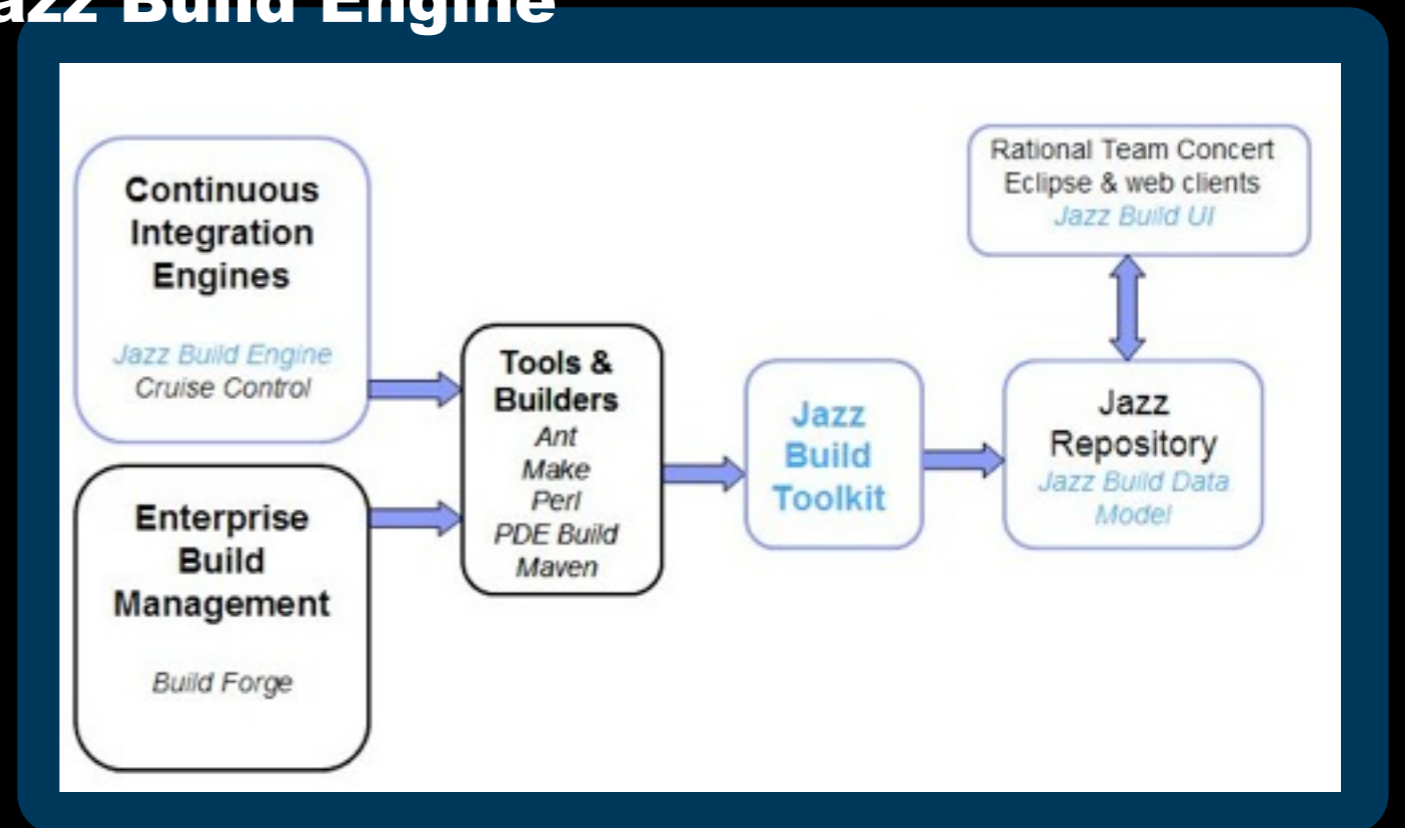
- Stream
- Component
- Change Set
- Baseline
- Snapshot



CONTINUOUS INTEGRATION

- **Build Scheduling**
- **Build Progress monitoring**
- **Build Alert**
- **Build Result Viewing**
- **Regression Testing**
- **Coverage Testing**
- **Linkage with other artifacts**
 - **Work items**
 - **Change Sets**

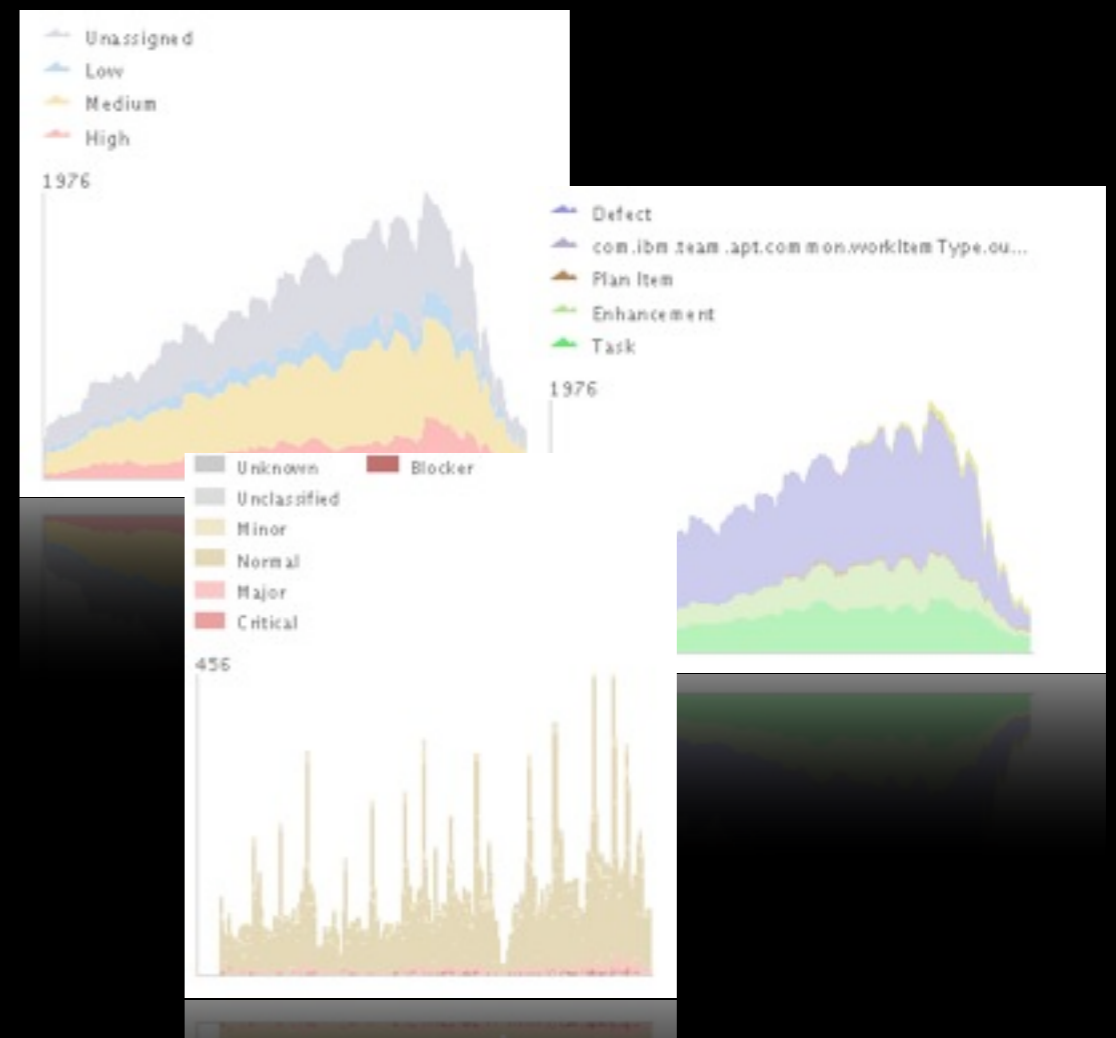
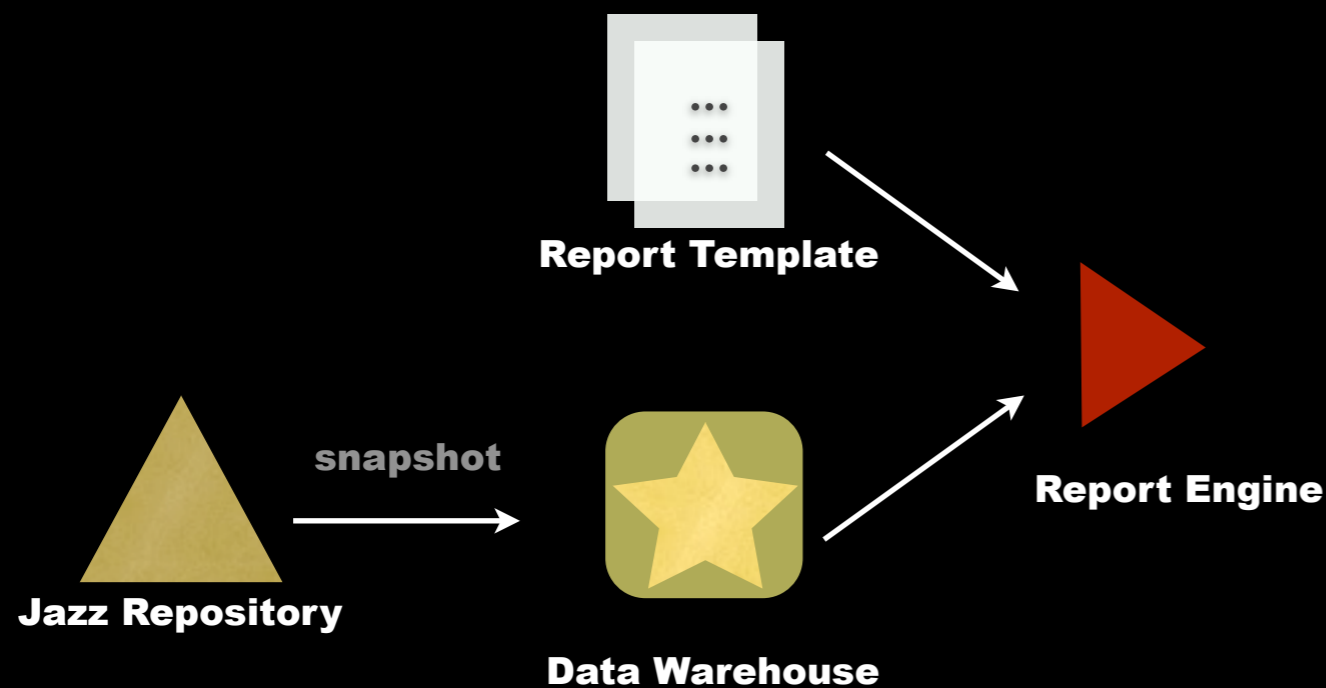
Jazz Build Engine



REPORT

Various project artifacts make it expensive to create report on-the-fly

A **data warehouse** is a storage facility for read-only, historical and aggregated data.





Measurable **Productivity**

Work Assignments

Working Hours



People

Scheduled Absences

Priority

Release/Iteration

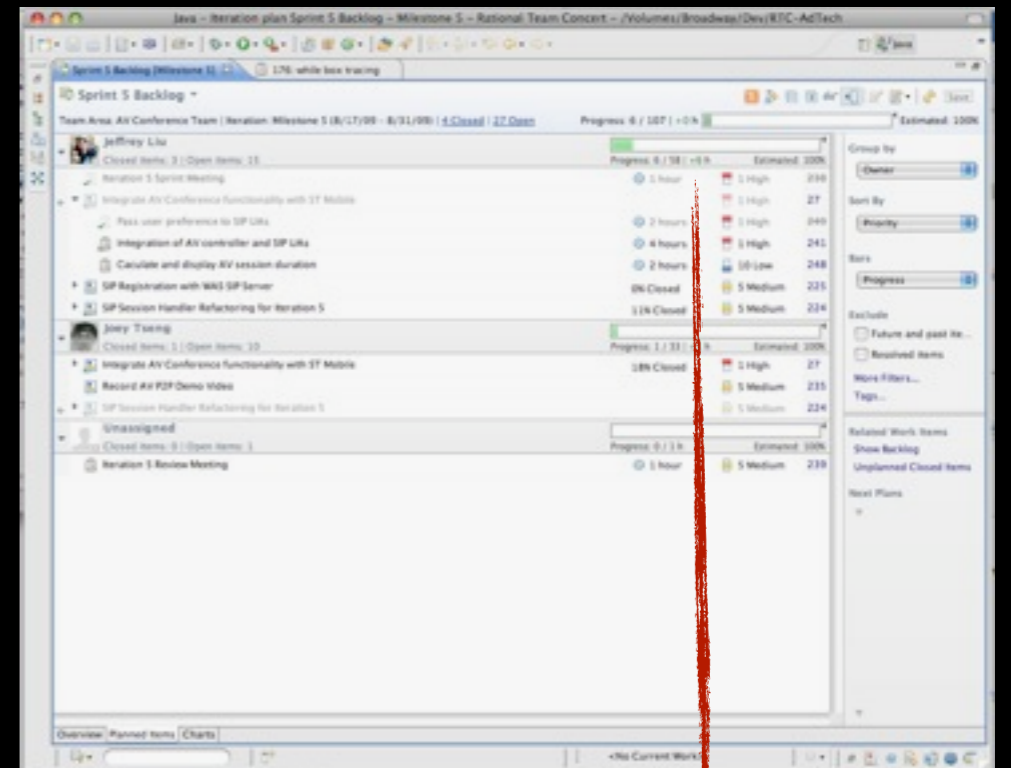
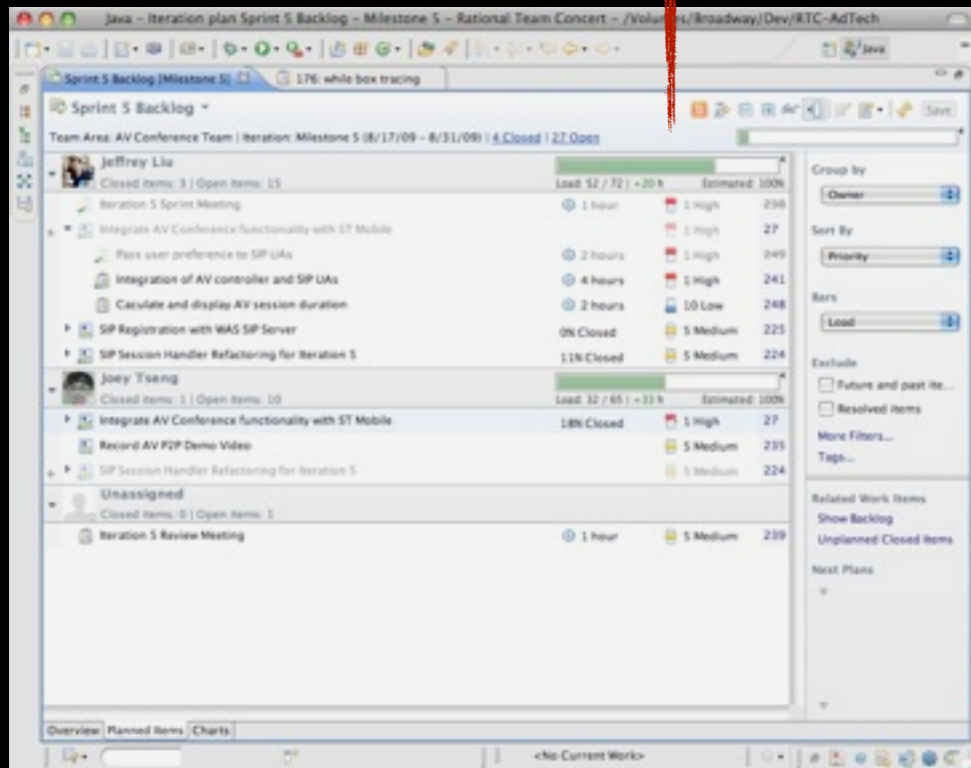
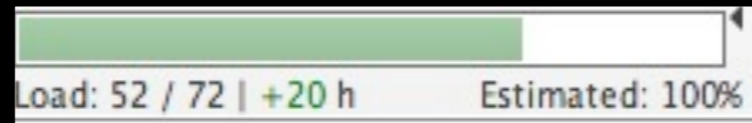


Work

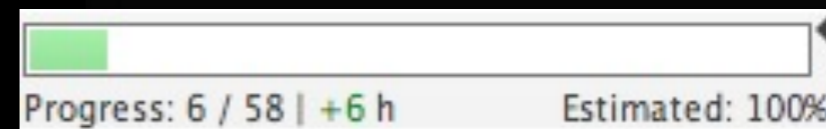
Estimate

Assignee

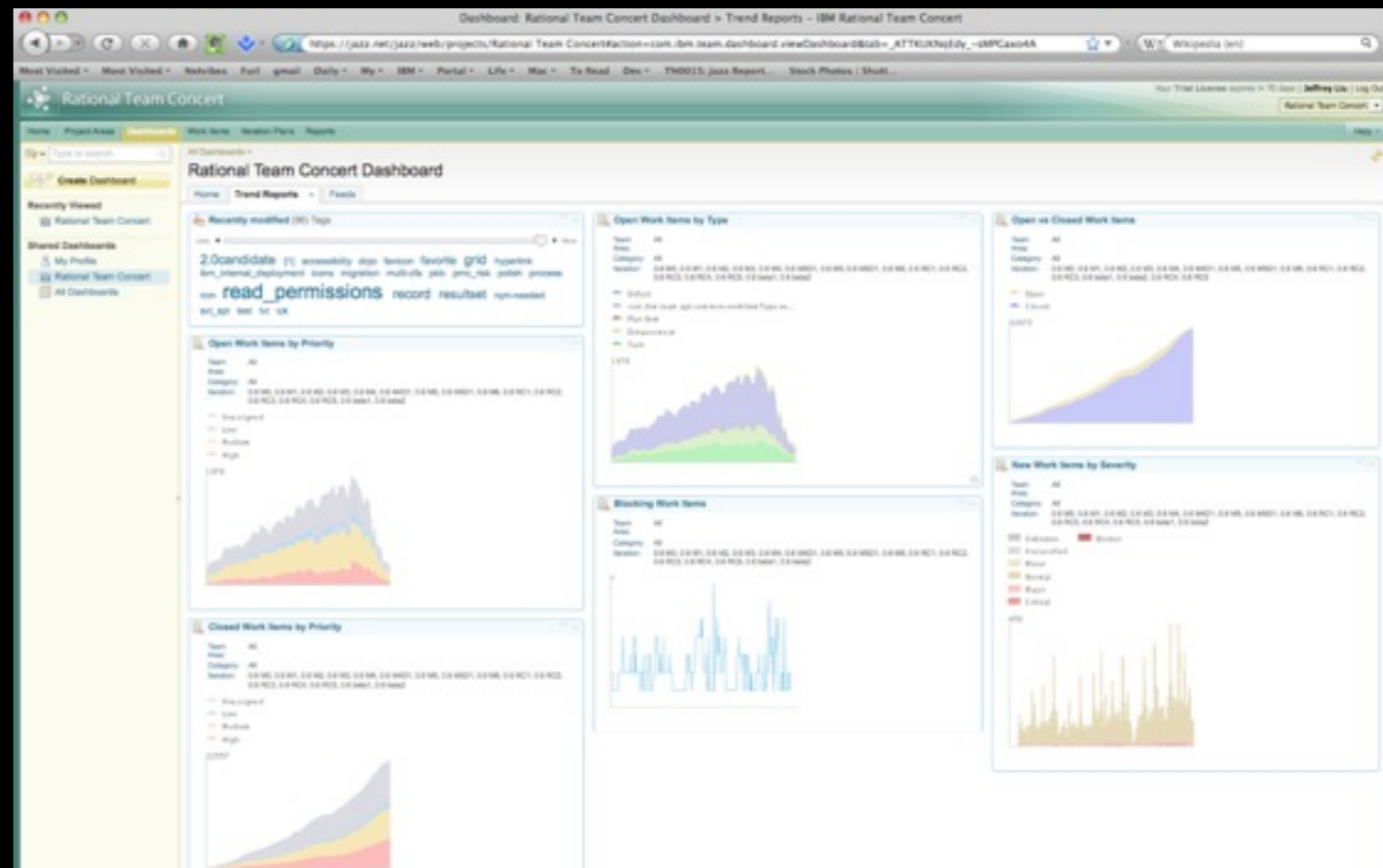
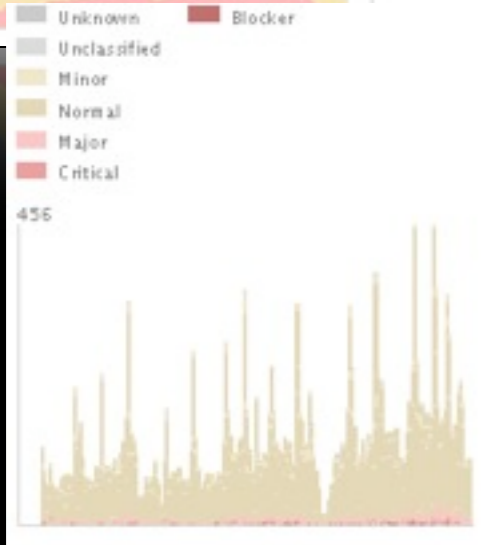
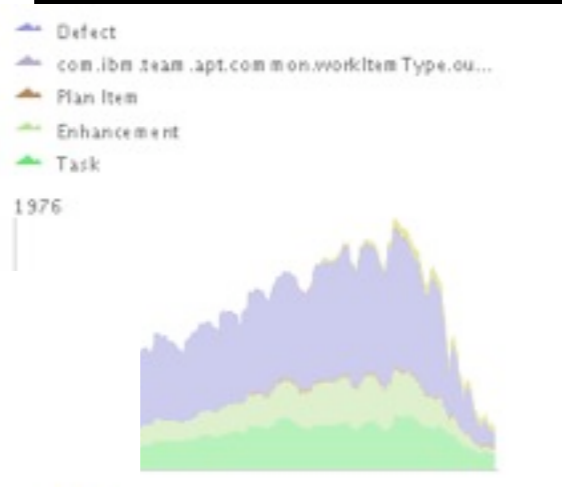
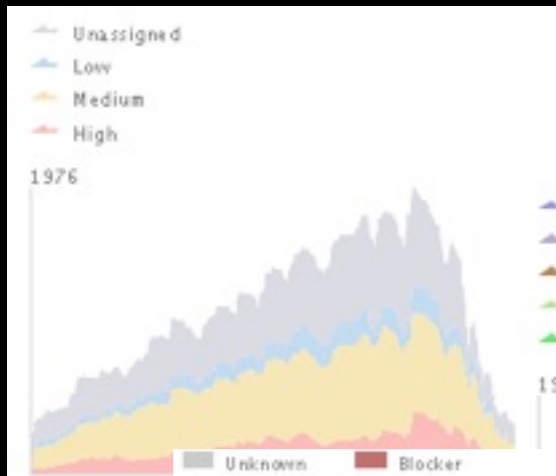
Work Load



Work Progress



Development Velocity



How it feels like ?



Are You a Pig or a Chicken ?





Self-Directed Team

Summary

Prefer **Agile** over Traditional Dev. Methodologies

Integrated Development Environment

Measurable **Productivity**

People
not organization
build great software



Questions

