



Enterprise Architecture

更智慧的企業架構，更簡易的企業治理

Ken Chen

Open Group Distinguished Certified IT Architect



Key Topics (主要內容)

- Why should you care about Enterprise Architecture? (您為什麼要關心和知道企業架構的訊息?)
- What is Enterprise Architecture? (什麼是企業架構呢?)
- What's its content? (企業架構的內容包括什麼呢?)
- How can we leverage Enterprise Architecture? (如何使企業架構可以幫到您?)
- How do you manage the Enterprise Architecture? (您如何管理企業架構內容?)



Ask yourself these questions...

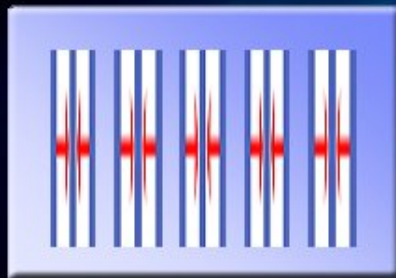
- How does your IT environment support your business transformation initiative?
- How do you know the impact of a business process change in one area of your business to the others?
- How can you enforce the same standards and industry compliance across the enterprise?
- How do you measure the success of your investment across your business units?
- How do you know what business processes will be impacted if you change one system or application?
- How do you know which applications support a specific business process?
- How can you trust your data source across your enterprise?
- How do you know what to change if you expand your business internationally?
- etc.



IBM Transformation: Major Stages (enabled by EA)

1993 - 1998

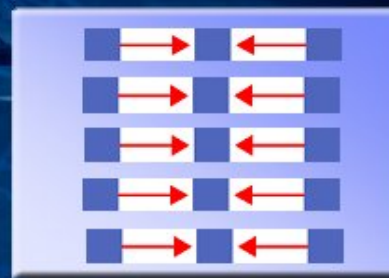
Driving common processes across lines of business was critical first step



- Global Process Focus
- Strategic Application Development
- Cross Unit Architecture Definition
- Reduced Complexity

1998 - 2004

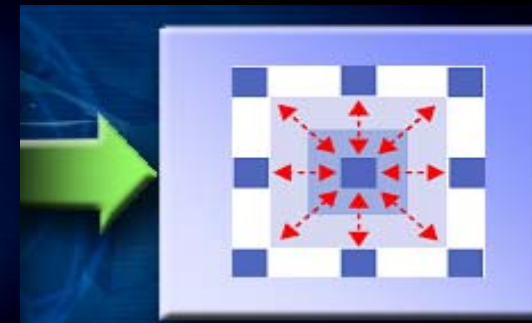
Enabling e-business & end-to-end integration across the IBM value chains



- e-business leadership
- Brand Focus
- Supplier / Customer interaction
- e2e Architecture Integration

Current

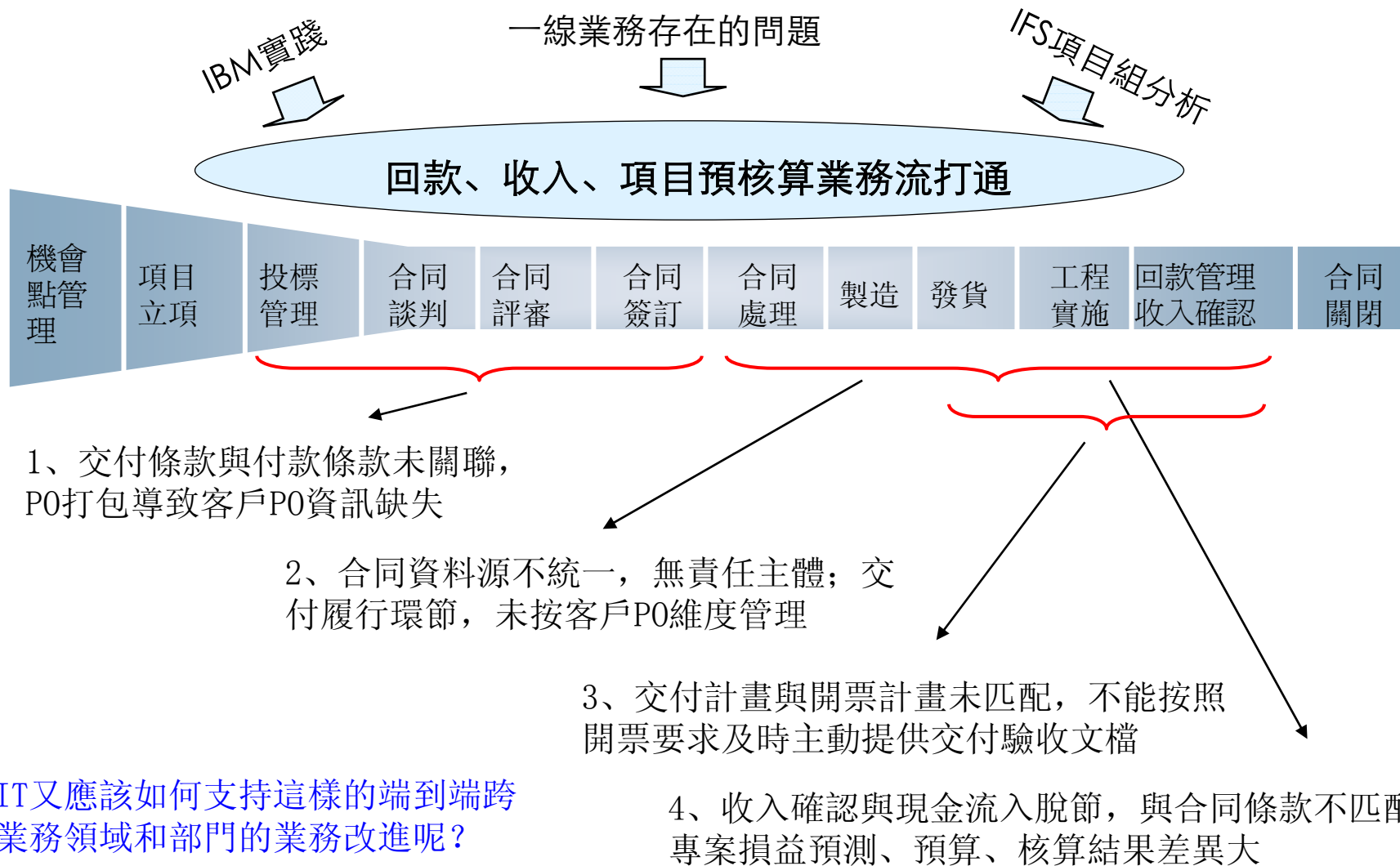
Enabling flexibility, integration and reuse across the value net to become a Globally Integrated Enterprise



- on-demand leadership
- Dynamic Adpatabilty
- Component / Services Architecture
- Value-Net Focus



另外一個客戶案例：一線業務問題的核心是“回款, 收入, 專案預核算業務流”沒有打通



Enterprise Architecture enables integration, reuse and consistency across Business and IT deliverables.



目标:

- **Accelerate business transformation & required capability**
 - Enable strategy driven, process driven, rules driven architecture
 - Accelerate migration from current to strategic environment (Transition planning)
- **Enable cross unit Governance Framework**
 - Establish criteria for cross unit consistency, reuse and integration
 - Drive Global integration and reuse across e2e solutions & across value net
- **Enhance quality and productivity across enterprise, unit and project level content**
 - Enable reuse and sharing across initiative and solution/project level deliverables
 - Build IT governance into development environment – drive consistency
- **Enhance Business Decision support and analysis**
 - Enable drill down and roll-up of content across enterprise, unit and project levels
 - Provide impact analysis, views, analysis and reports
- **Align portfolio analysis with business and IT priorities**
 - Drive simplification and legacy cost reduction – spend on strategic
 - Ensure Initiative / Solution compliance with agreed processes, standards & architecture

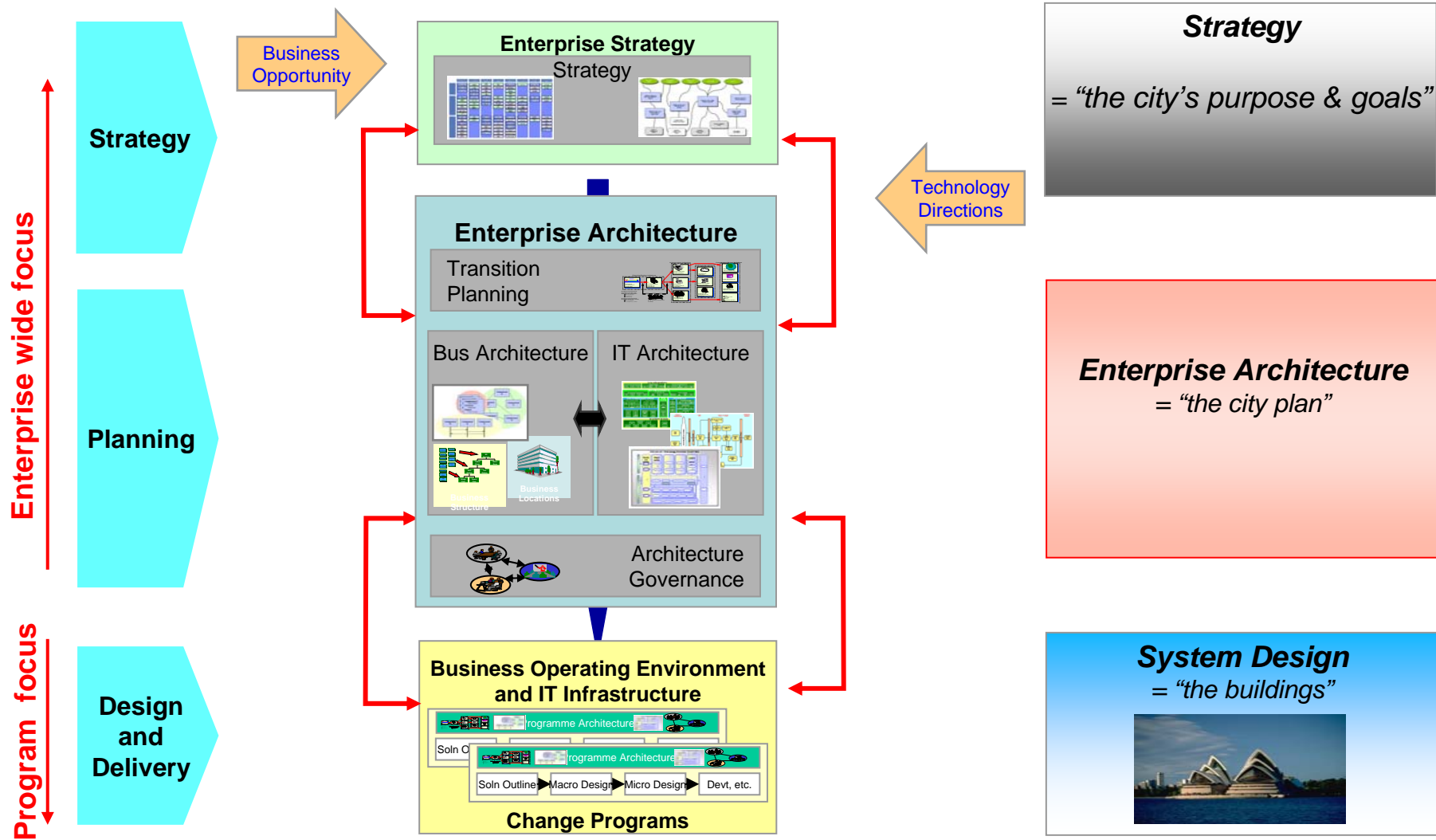


Key Topics (主要內容)

- Why should you care about Enterprise Architecture? (您為什麼要關心和知道企業架構的訊息?)
- What is Enterprise Architecture? (什麼是企業架構呢?)
- What's its content? (企業架構的內容包括什麼呢?)
- How can we leverage Enterprise Architecture? (如何使企業架構可以幫到您?)
- How do you manage the Enterprise Architecture? (您如何管理企業架構內容?)



EA ensures IT aligns with business. It Interlocks with the Investment cycle and solution delivery cycle to ensure effective design to Target Business and IT Architecture



Enterprise Architecture provides an intelligent framework, which enables consistency, reuse and integration across “all levels” of IBM’s architecture

Enterprise Architecture

- Business strategies, business processes
- High level data architecture
- Target architecture blueprint
- Roadmaps: current and transitional views
- Technology framework
- Governance criteria

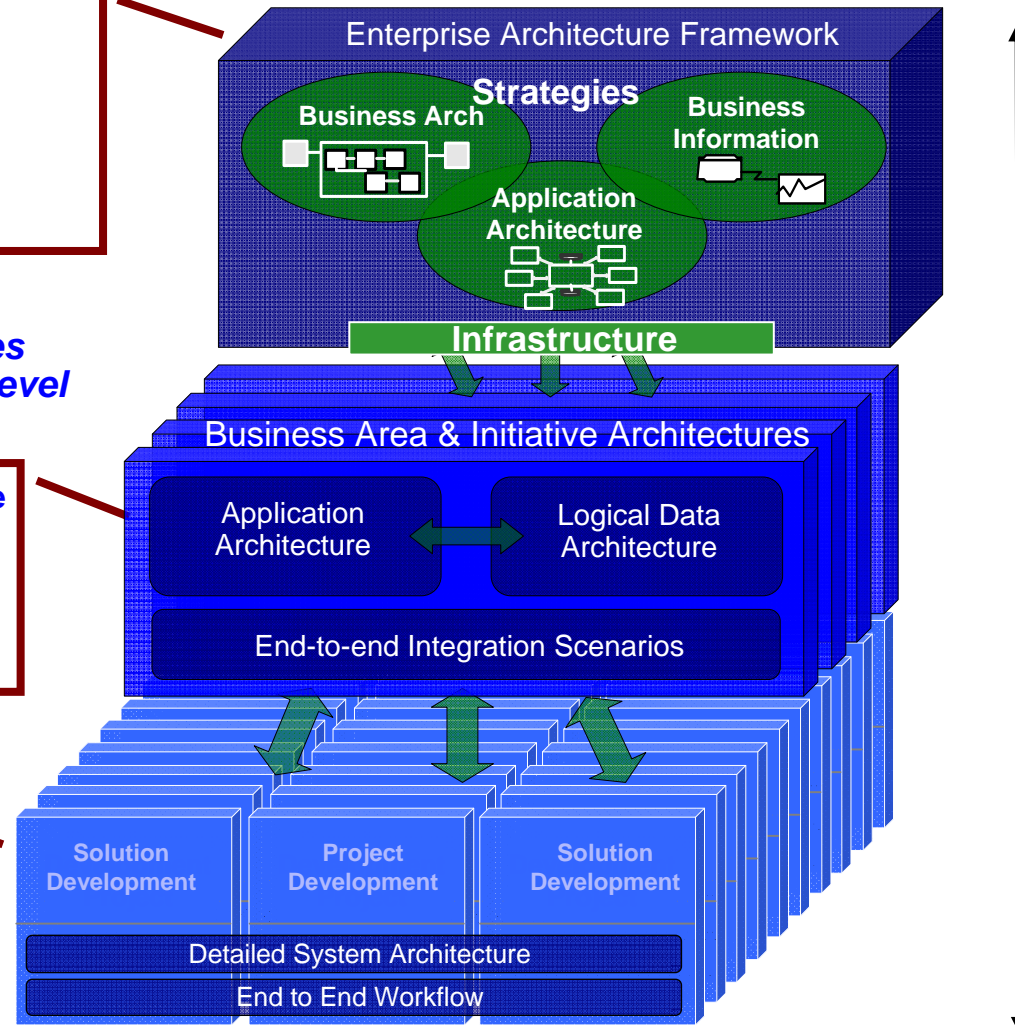
Enterprise Wide EA Deliverables drives ‘Right’ Design at Initiative /Solution Level

Business Area and Initiative Level Architecture

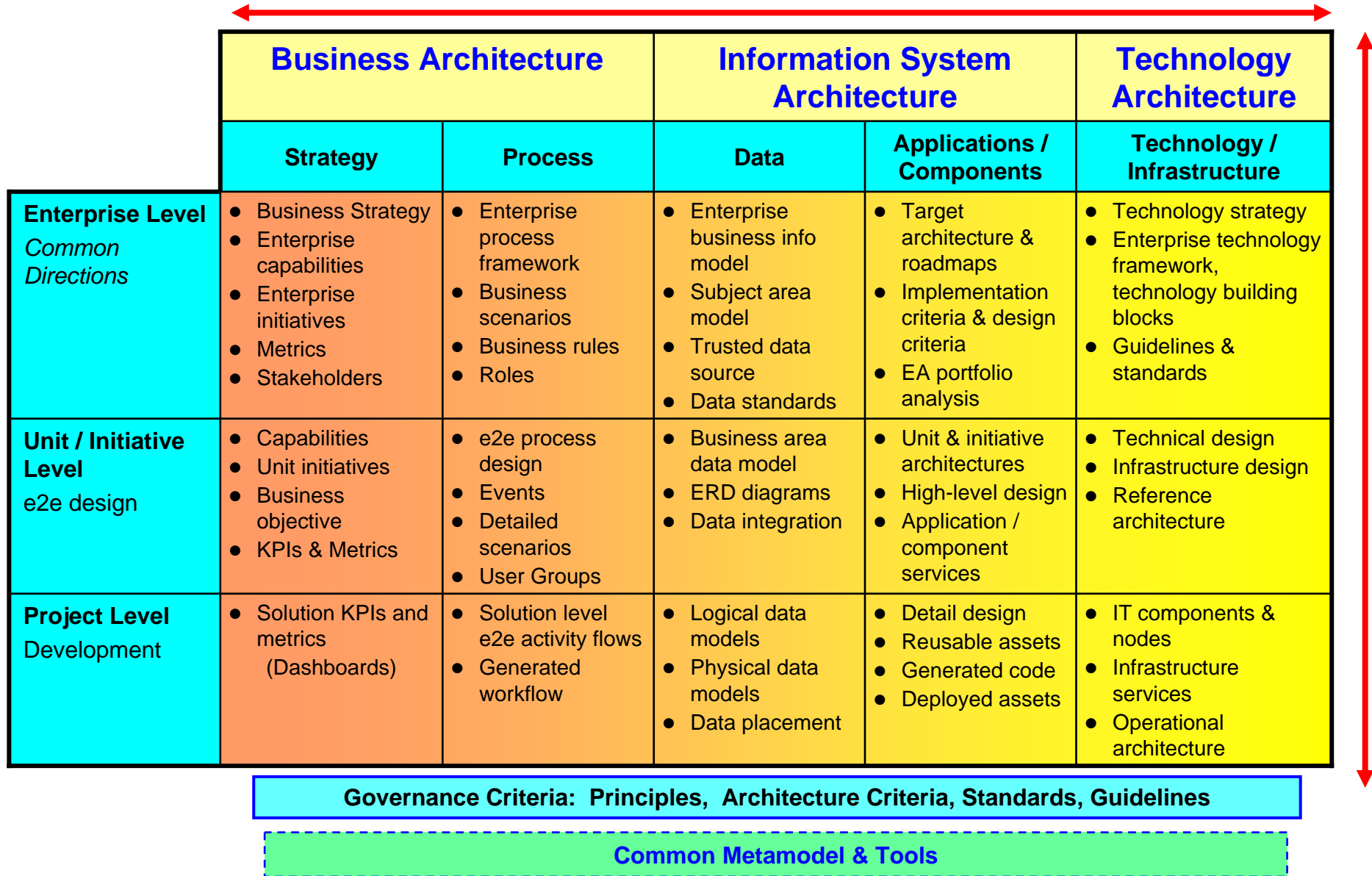
- BT Detailed Architectures (unit & cross unit) Extensions
- E2e Cross Unit Architecture Extensions
- Migration Plans and Deployment Roadmaps
- Unit Portfolio Management

Solution Level Architecture

- Project Development
- Detail System Design
- Reusable Assets



EA enables integration, consistency and reuse across all levels of definition

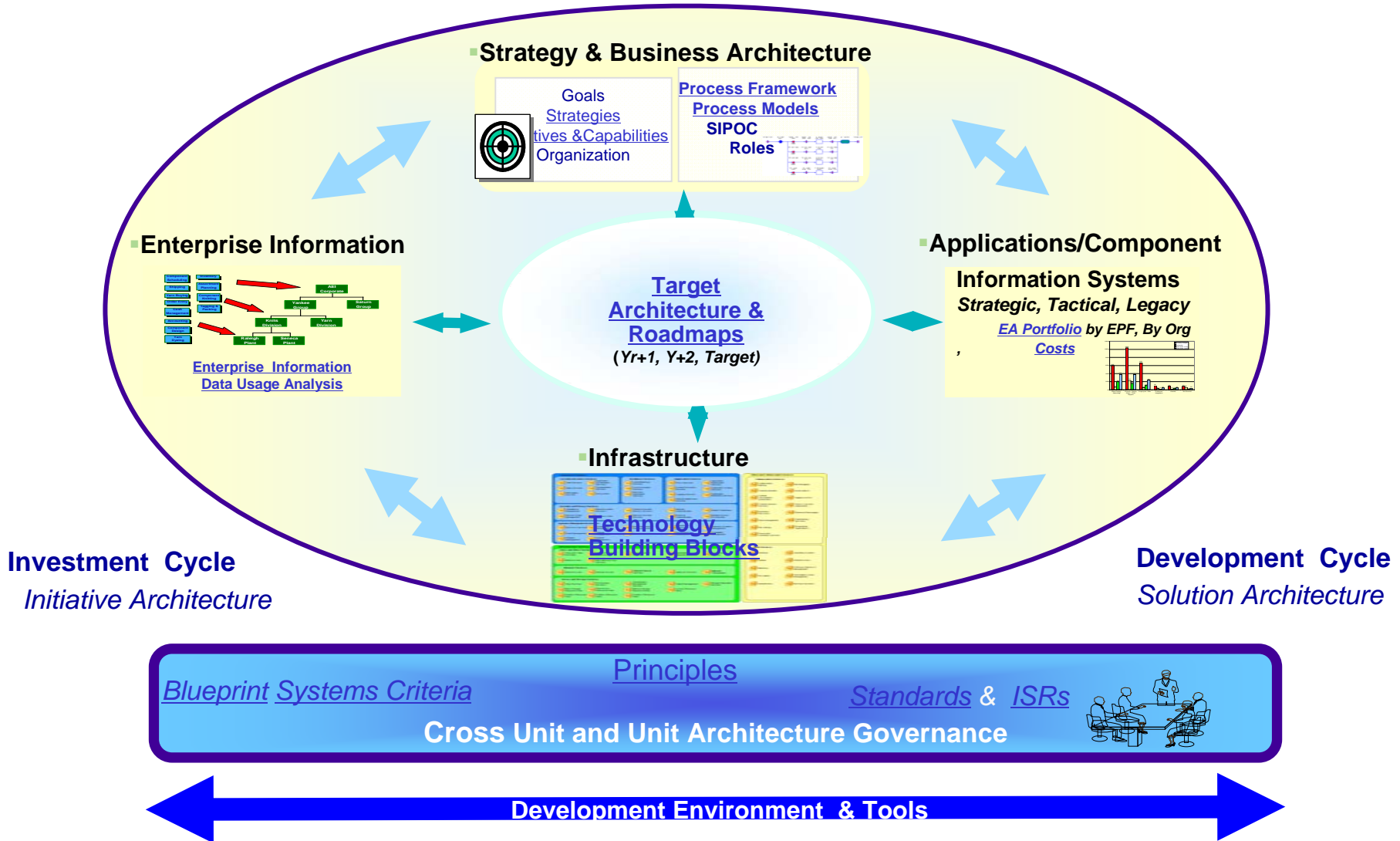


Key Topics (主要內容)

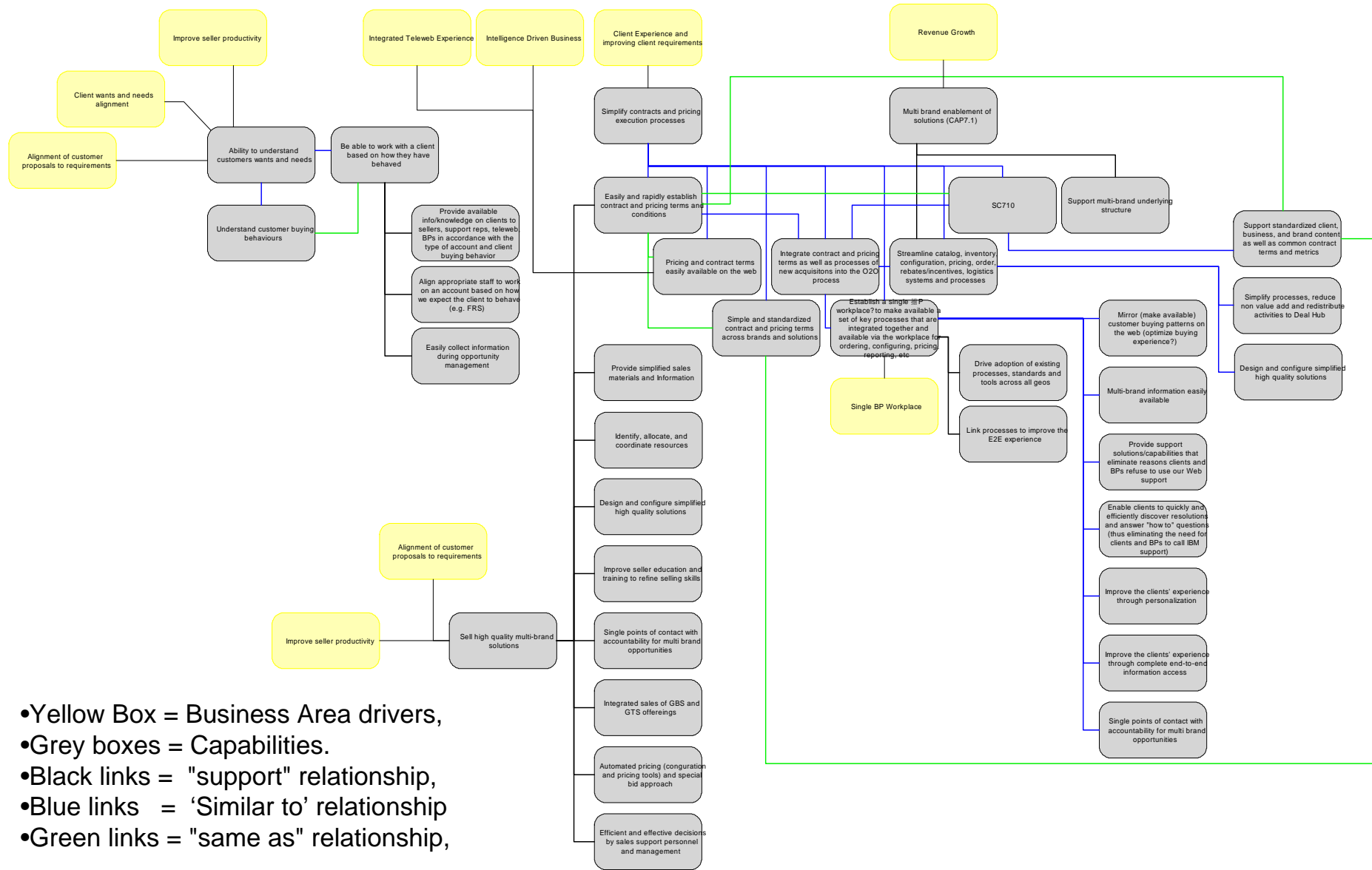
- Why should you care about Enterprise Architecture? (您為什麼要關心和知道企業架構的訊息?)
- What is Enterprise Architecture? (什麼是企業架構呢?)
- What's its content? (企業架構的內容包括什麼呢?)
- How can we leverage Enterprise Architecture? (如何使企業架構可以幫到您?)
- How do you manage the Enterprise Architecture? (您如何管理企業架構內容?)



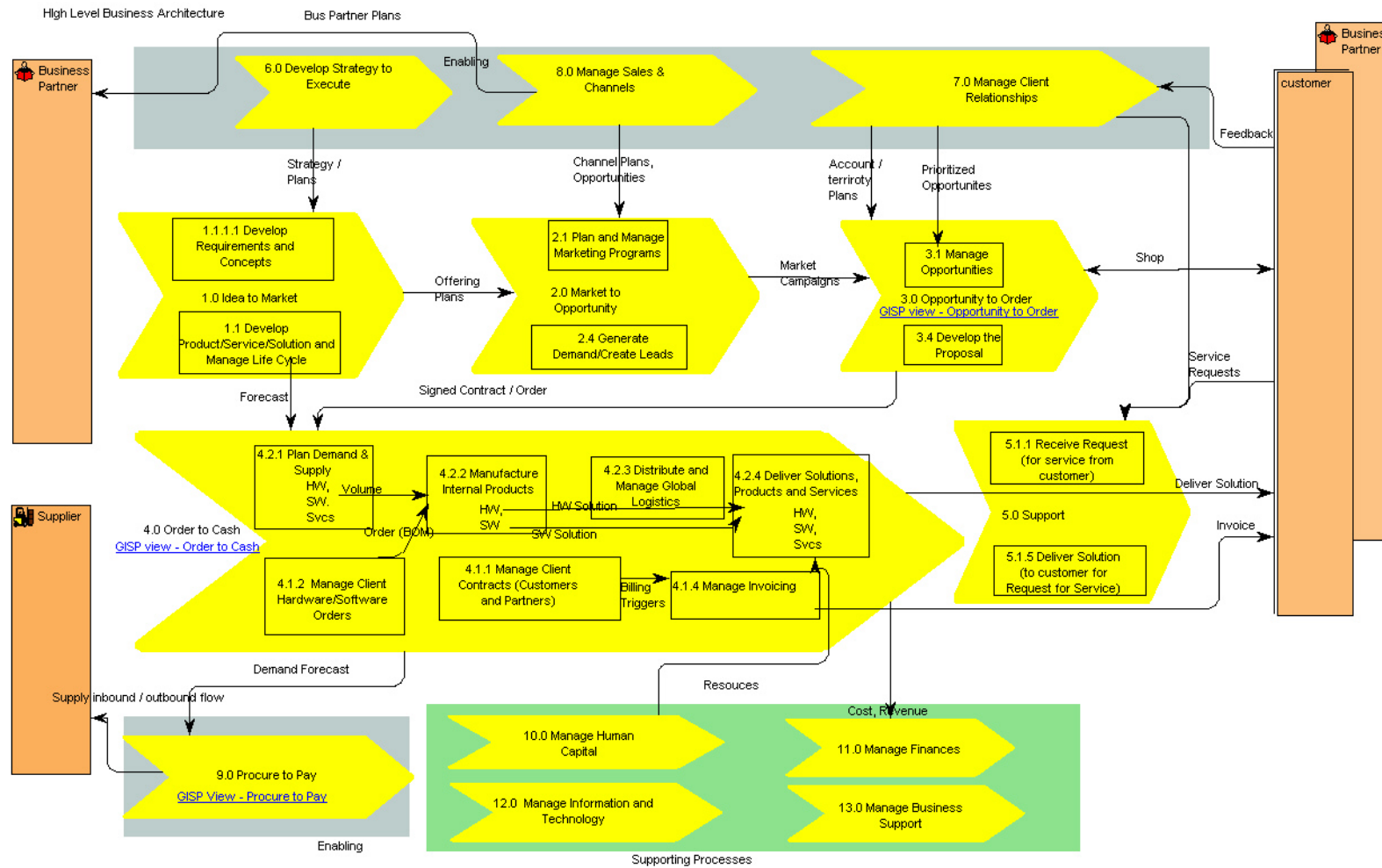
EA provides a framework for the definition and integration of Business and IT Architecture ... aligned to business strategies and investments



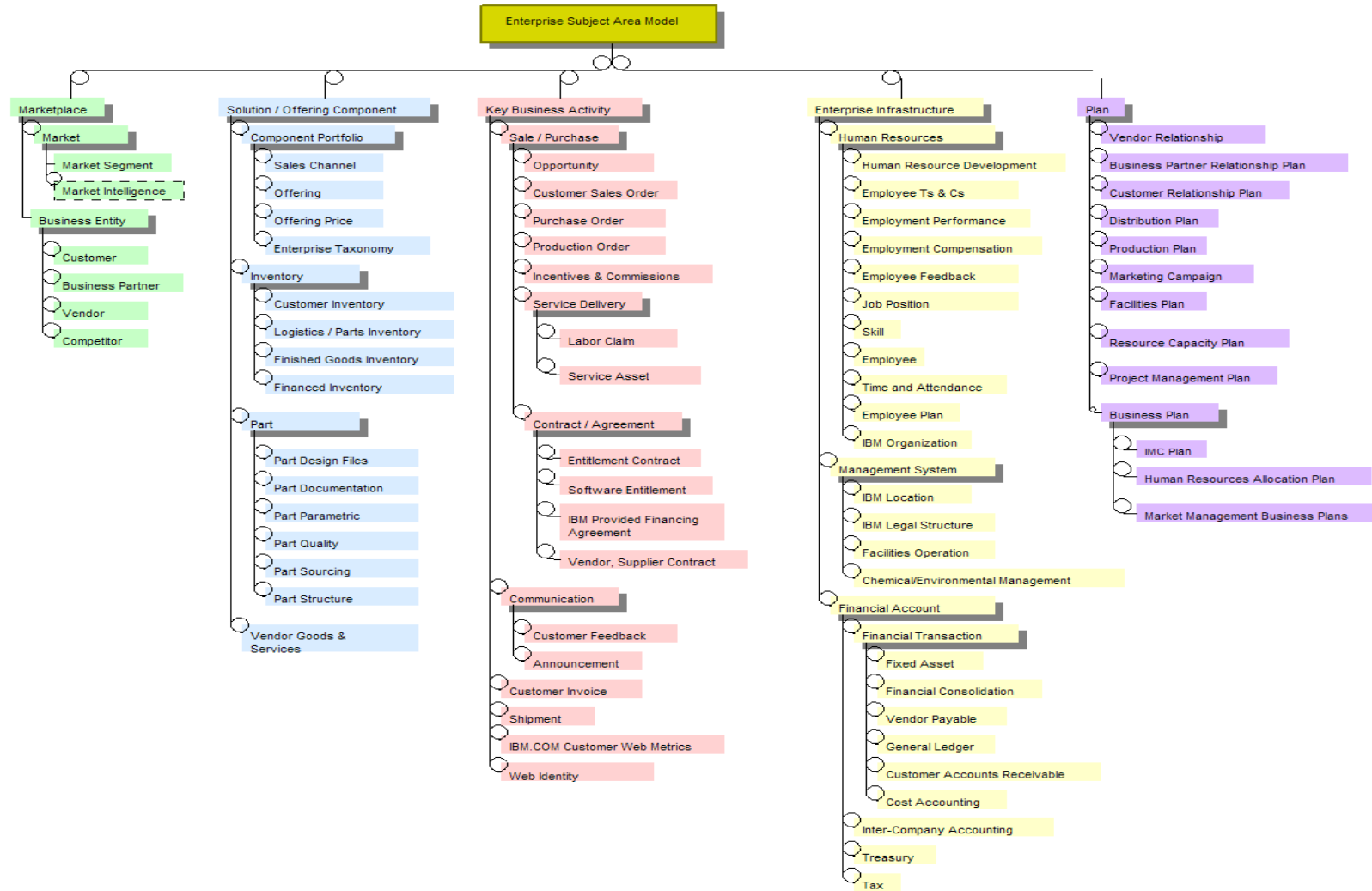
Capabilities: View of Capability Network Diagram



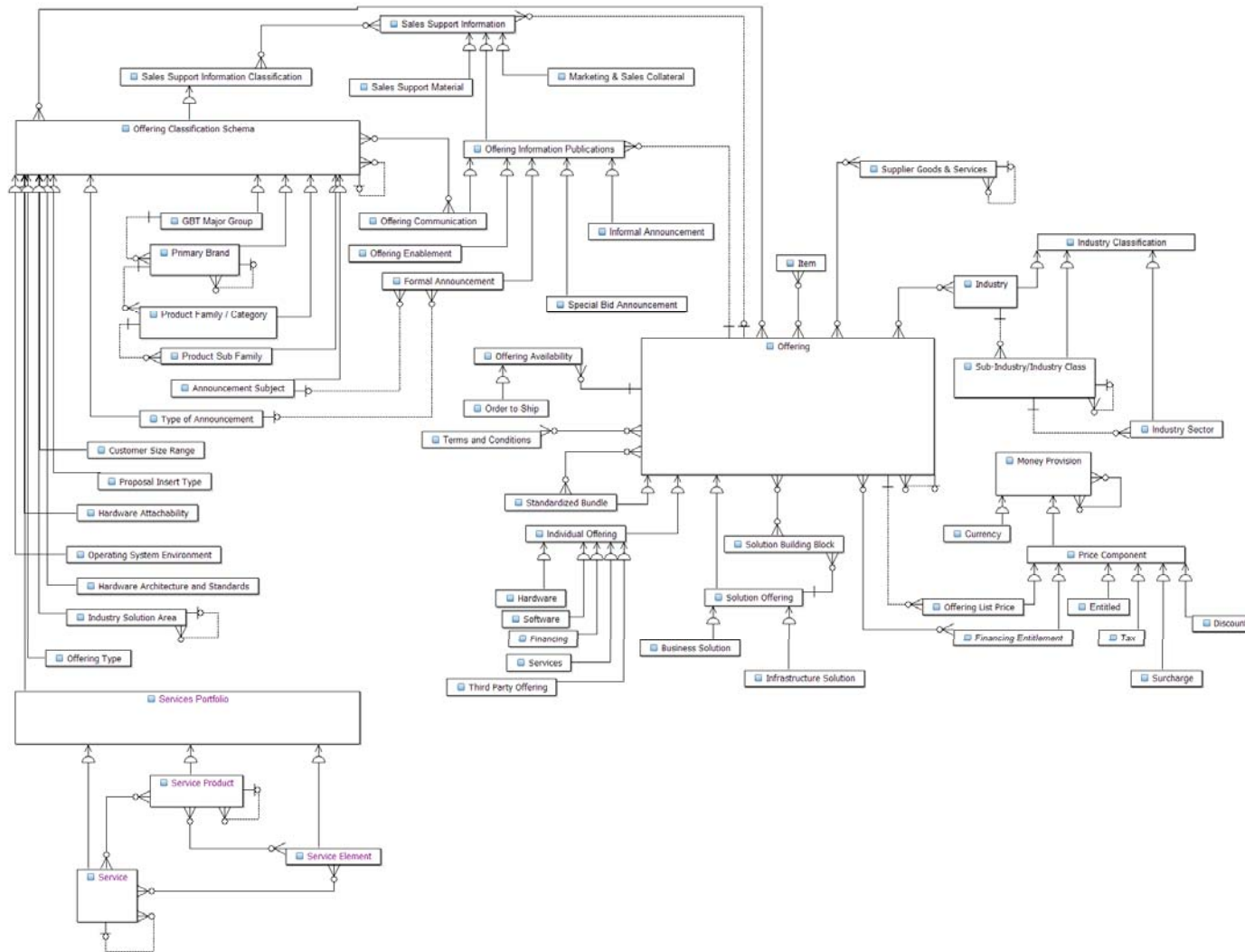
High-level Business Architecture with Global Integrated Service Views



Enterprise Data Subject Areas provide Corporate wide data taxonomy which enables drill down to detailed data deliverables (Conceptual, Logical, Physical)



Enterprise Business Information Model provide a logical view of all enterprise business data



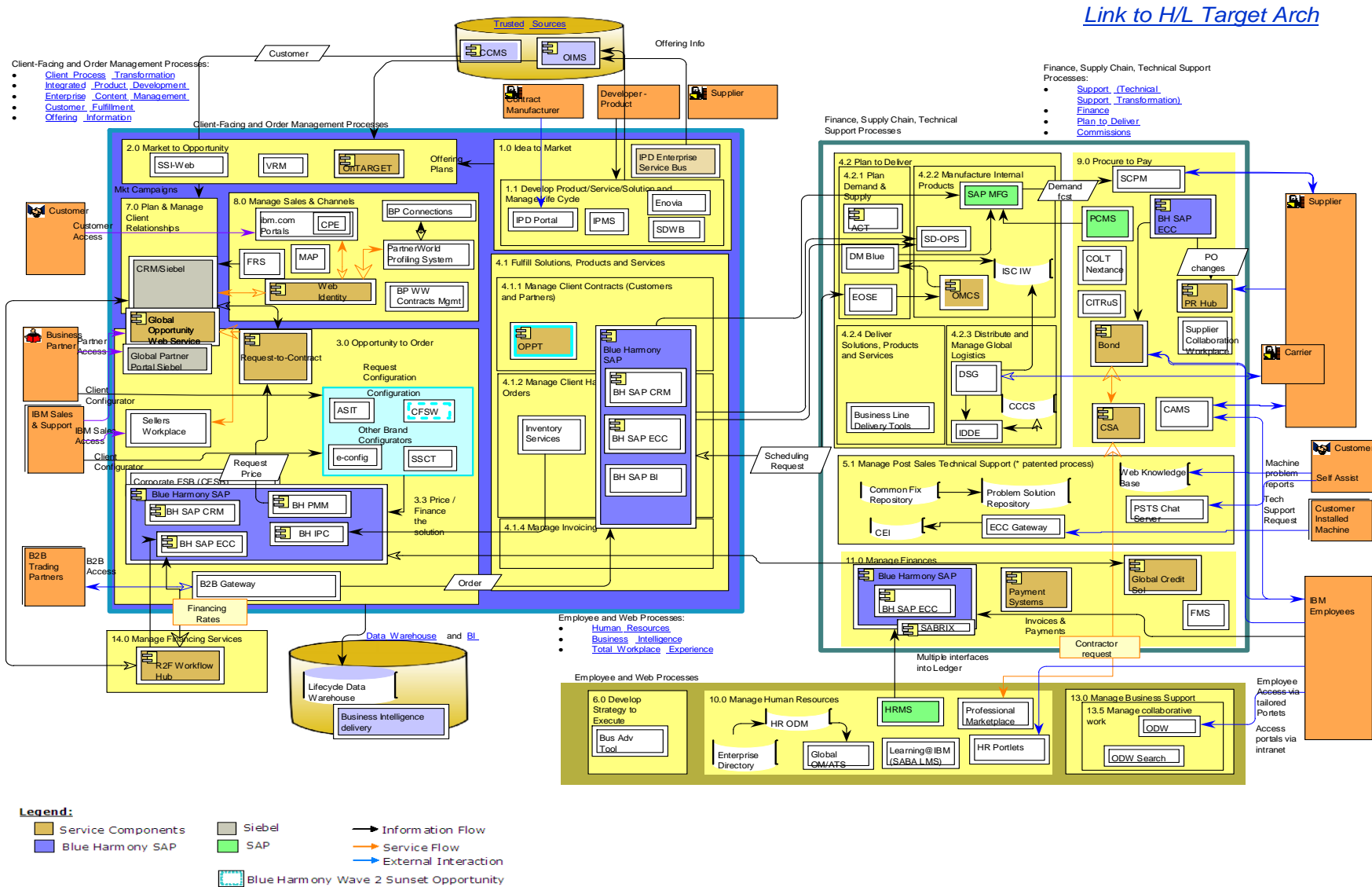
Applications are identified by Business Process & Organization

11.0 Manage Finances - Applications - Detailed Cost Information

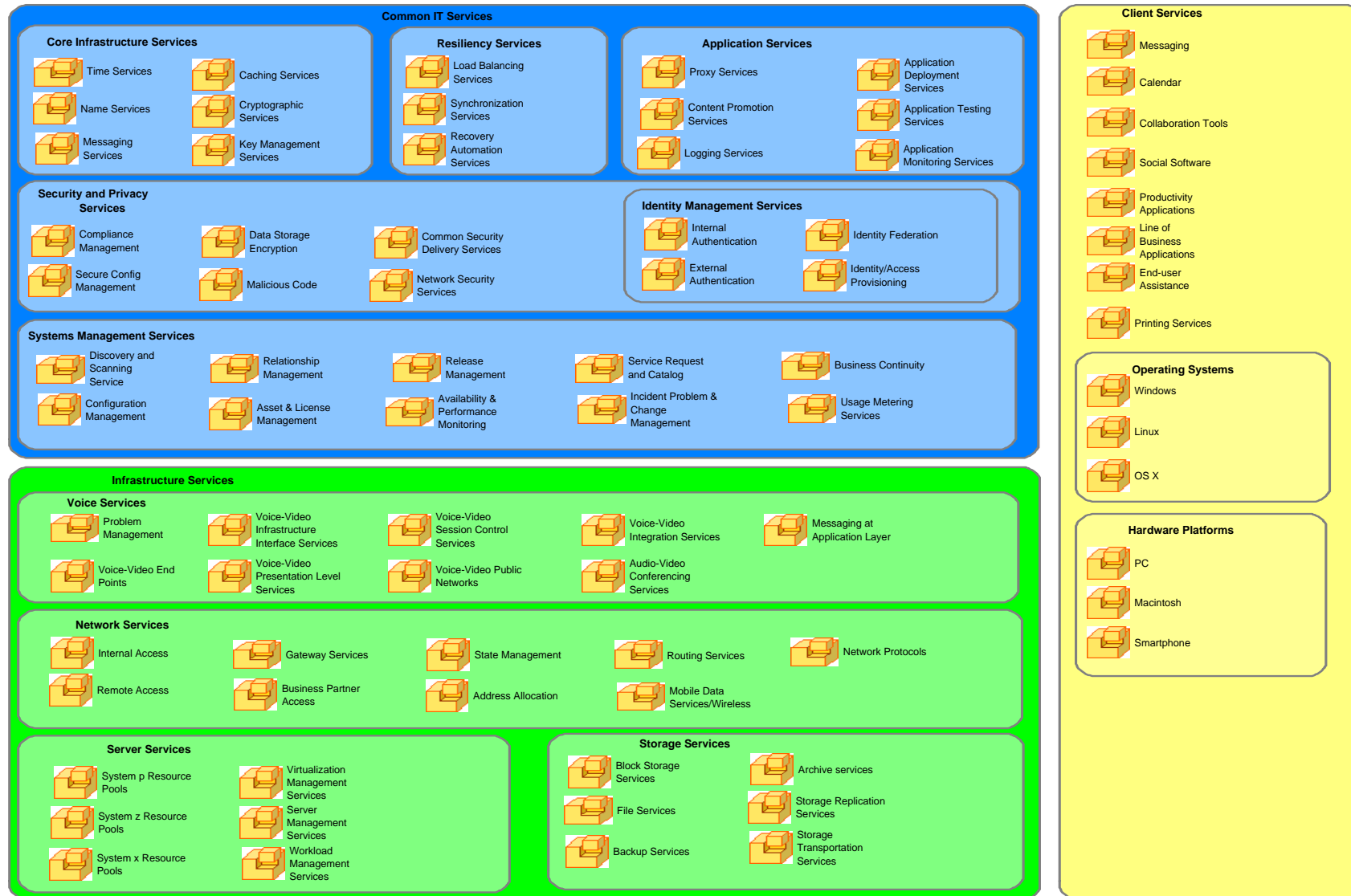
Business Process (Level 2)	Business Process (Level 3)	Strategic	Tactical	Legacy
11.1 Perform General Accounting	11.1.1 Process General Ledger	ARMS SAP Ledger BH Sunset - H Voucher Request and Repository BH Sunset - H	AUX BH Sunset - H CLS-FDW BH Sunset - H CRD DCAT FMWLR BH Sunset - H GLIM SAFE BH Sunset - H TPRSS BH Sunset - M (Wave2) WWCoA Database BH Sunset - M (Wave2)	ITN-V9 Gestion WebRETAIN Accruals BH Sunset - H ACR BH Sunset - H ALARD AMES ANAEL API BH Sunset - H Base Financiere BCS Journal Backup BH Sunset - H BLI BH Sunset - H BMW SAP CALDS BH Sunset - M Call-in database GMT CEEMEA Call-in database IOT Northeast and IOT Southw CLS BH Sunset - H CLS Delta-Greece BH Sunset - H CLS local - Canada BH Sunset - M CLS Local - Italy BH Sunset - H CLS Local West BH Sunset - H CLS-Data Entry in Hebrew BH Sunset - H CLS-FDW - Account Requests BH Sunset - H CLS-FDW InfoPrint Access Request Database CLS-FDW InfoPrint Account Request Database CLS-Local Tables BH Sunset - H Common Accrual Systems BH Sunset - H Conac Fund Manager Cost Revenue Match Systems BH Sunset - H CSO Billing BH Sunset - H Department Number Request DB BH Sunset - H Department Request Database DFI Excel Tool DFI LA Spreadsheet ELA/SRO Model BH Sunset - H ETAFI BH Sunset - M EVAD BH Sunset - H FDS BH Sunset - H FDWQ BH Sunset - H FDW Daily Records-Brazil BH Sunset - H FIDS/2000 BH Sunset - M Financial Data Warehouse - Local Modules BH : GLIM-Local GST Payroll File HFL BH Sunset - M IMAPS BH Sunset - H InfoPrint Apex LACS BH Sunset - M Ledger Distribution System BH Sunset - H



H/L Target Architecture Design – leverage Business and IT content



Enterprise Technology Framework provides Technology Building Blocks (TBBs) showing Current & End State environment.



EA Deliverable are Supported Governance Criteria ... providing clear direction on what must be done to enable the EA. It includes Principles, Standards, ISRs and Architecture Criteria

Principles

- **Principles** provide fundamental statements of how the enterprise architecture supports IBM's business directions and e2e processes. They are supported by 'motivations' which describe why they are in place and 'implications' which describe their business impact. They are defined by EA Domain Leads

Strategic / Tactical Systems Implementation Criteria

- **Strategic Systems Implementation Criteria** provide a clear and concise definition of the strategic / tactical systems enabling IBM Business Processes and directions. They must be used across IBM's TE , BIU and geographic architectures, initiatives and solutions. This is defined as part of the Target Architecture Blueprint and Roadmaps

Architecture Design Criteria

- **Design Criteria** provide specific directions on the effective design and implementation of solution architectures in support of key architecture directions such as SOA, This is defined as part of the Target Architecture Blueprint

Standards and Guidelines

- **Standards** specify what 'must be' enabled across our business and IT environment . Initiatives and Solutions must comply with Standards. Exceptions to a standard must be approved by the standard's Business Owner and supported by a plan to become compliant.
- **Guidelines** provide recommended guidance affecting the optimal implementation of processes, applications, infrastructure security

Infrastructure Service Rules

- **Infrastructure Service Rules.** Infrastructure Service Rules identify mandatory rules which must be enabled with specific infrastructure service offering, e.g., AHE (Application Hosting Environment). They do not require ARC phase exit reviews.

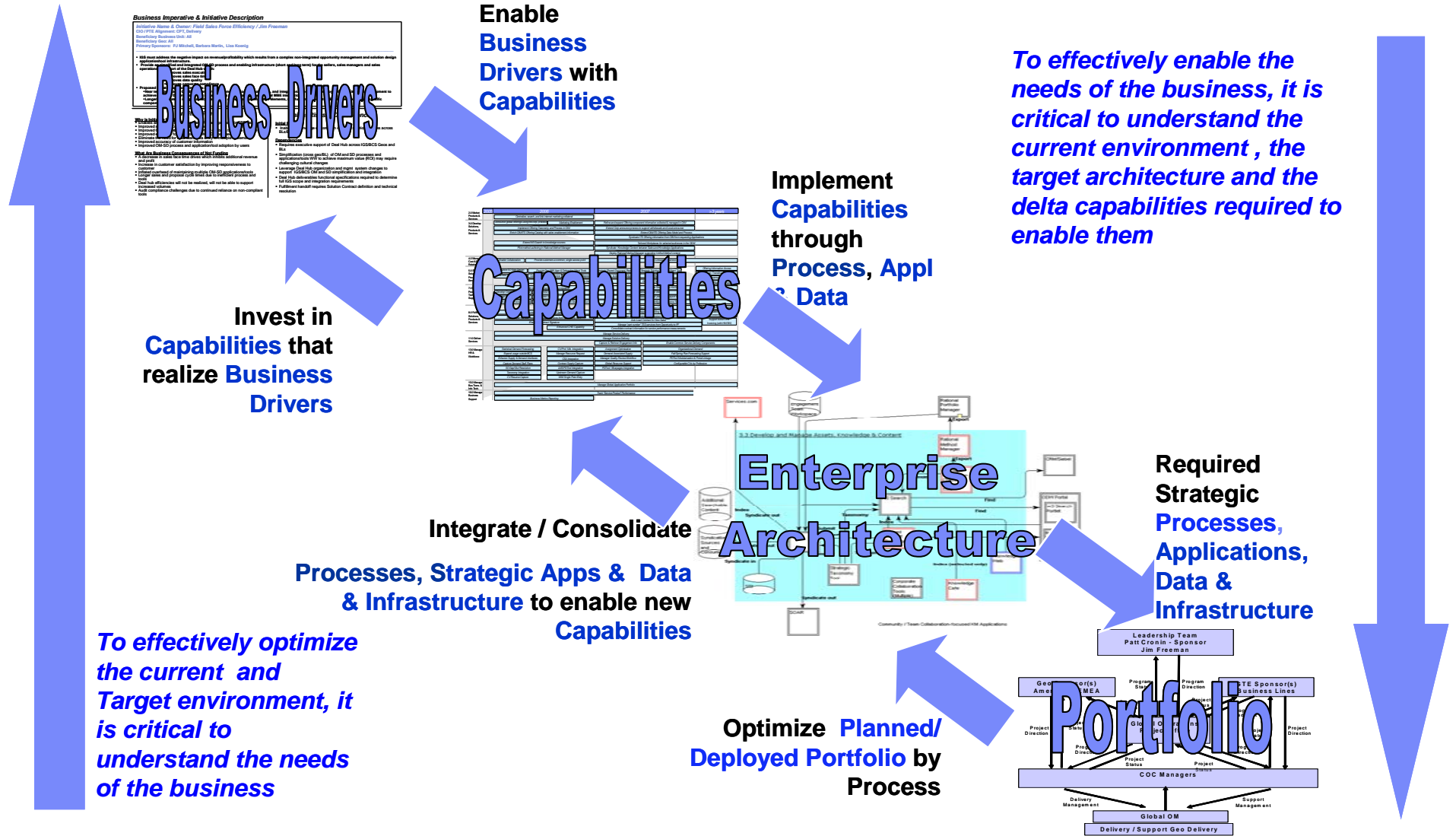


Key Topics (主要內容)

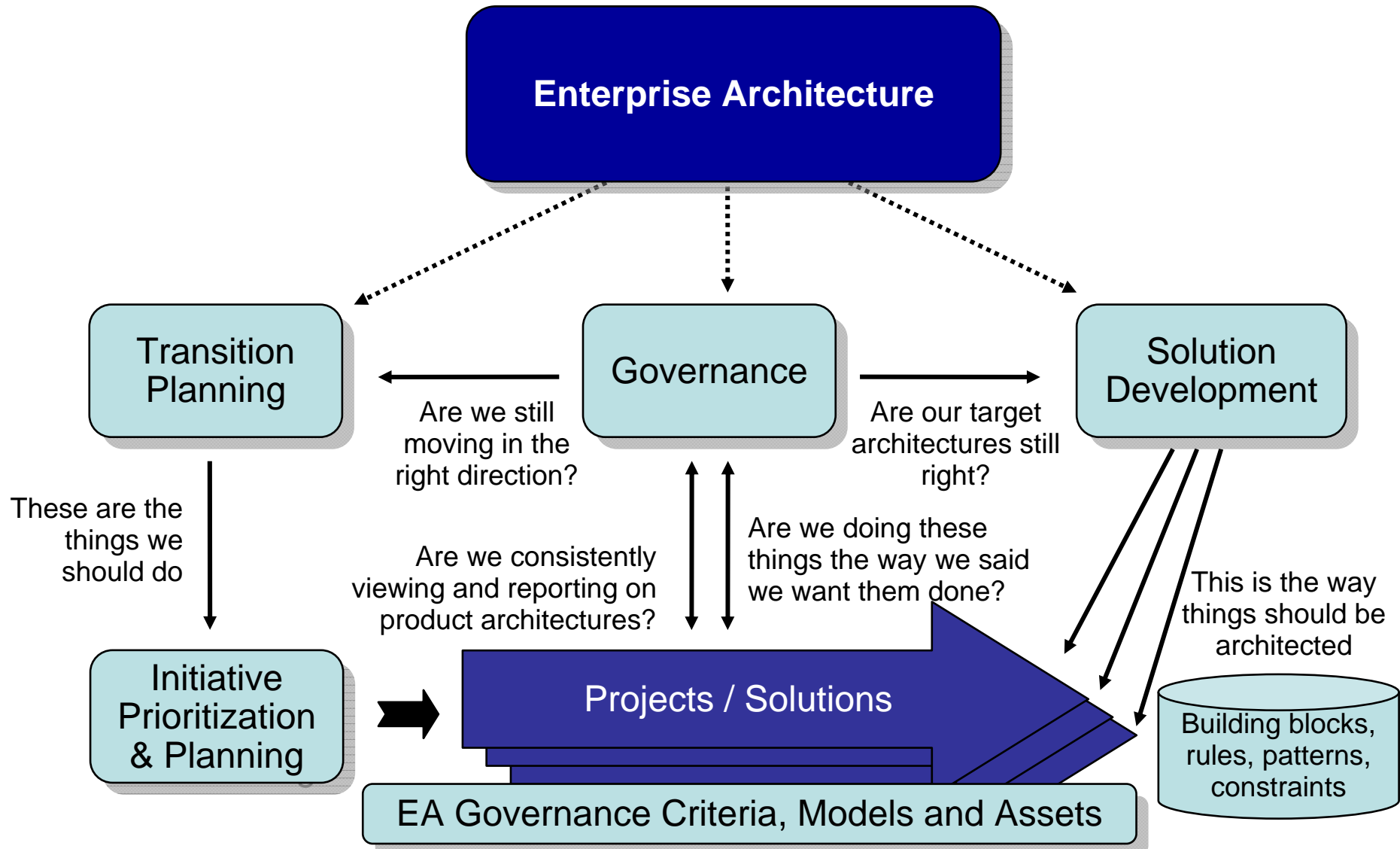
- Why should you care about Enterprise Architecture? (您為什麼要關心和知道企業架構的訊息?)
- What is Enterprise Architecture? (什麼是企業架構呢?)
- What's its contents? (企業架構的內容包括什麼呢?)
- How can we leverage Enterprise Architecture? (如何使企業架構可以幫到您?)
- How do you manage the Enterprise Architecture? (您如何管理企業架構內容?)



Strategy Cycle and Architecture Alignment



EA interacts with Plan cycle to enable Transition Planning & with Development cycle to enable governance across solutions and initiatives

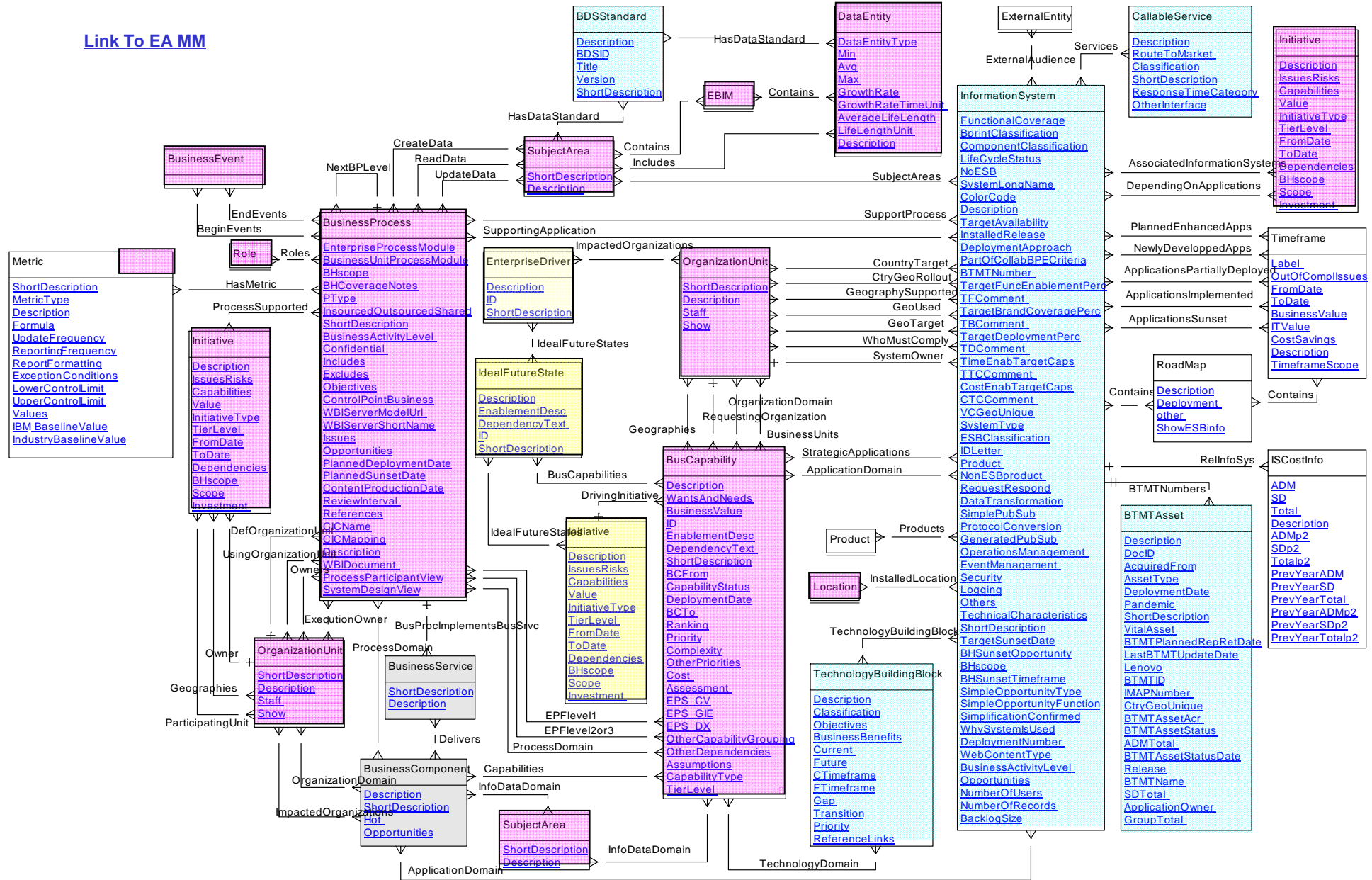


Key Topics (主要內容)

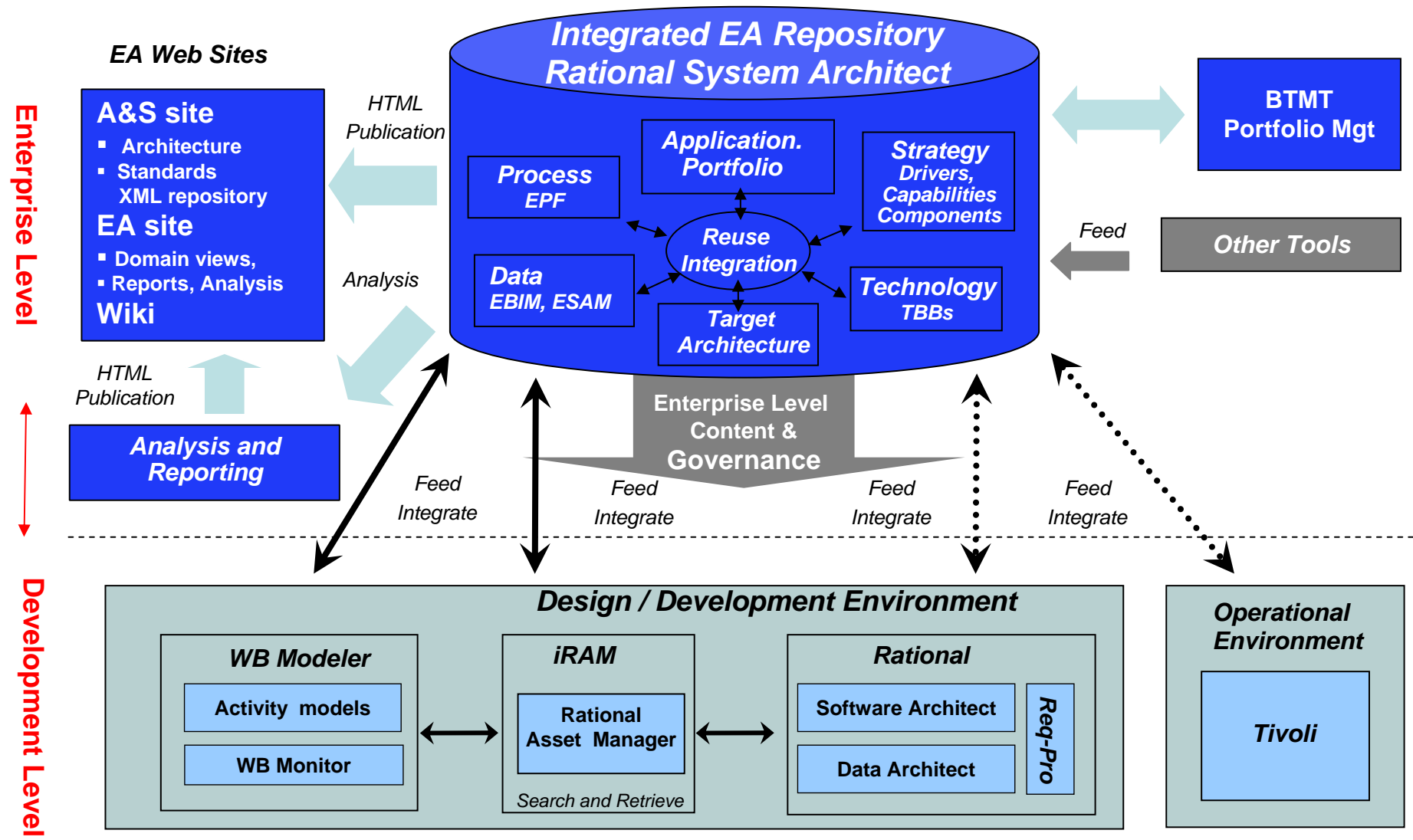
- Why should you care about Enterprise Architecture? (您為什麼要關心和知道企業架構的訊息?)
- What is Enterprise Architecture? (什麼是企業架構呢?)
- What's its contents & deliverables? (企業架構的內容包括什麼呢?)
- How can we leverage Enterprise Architecture? (如何使企業架構可以幫到您?)
- How do you manage the Enterprise Architecture? (您如何管理企業架構內容?)



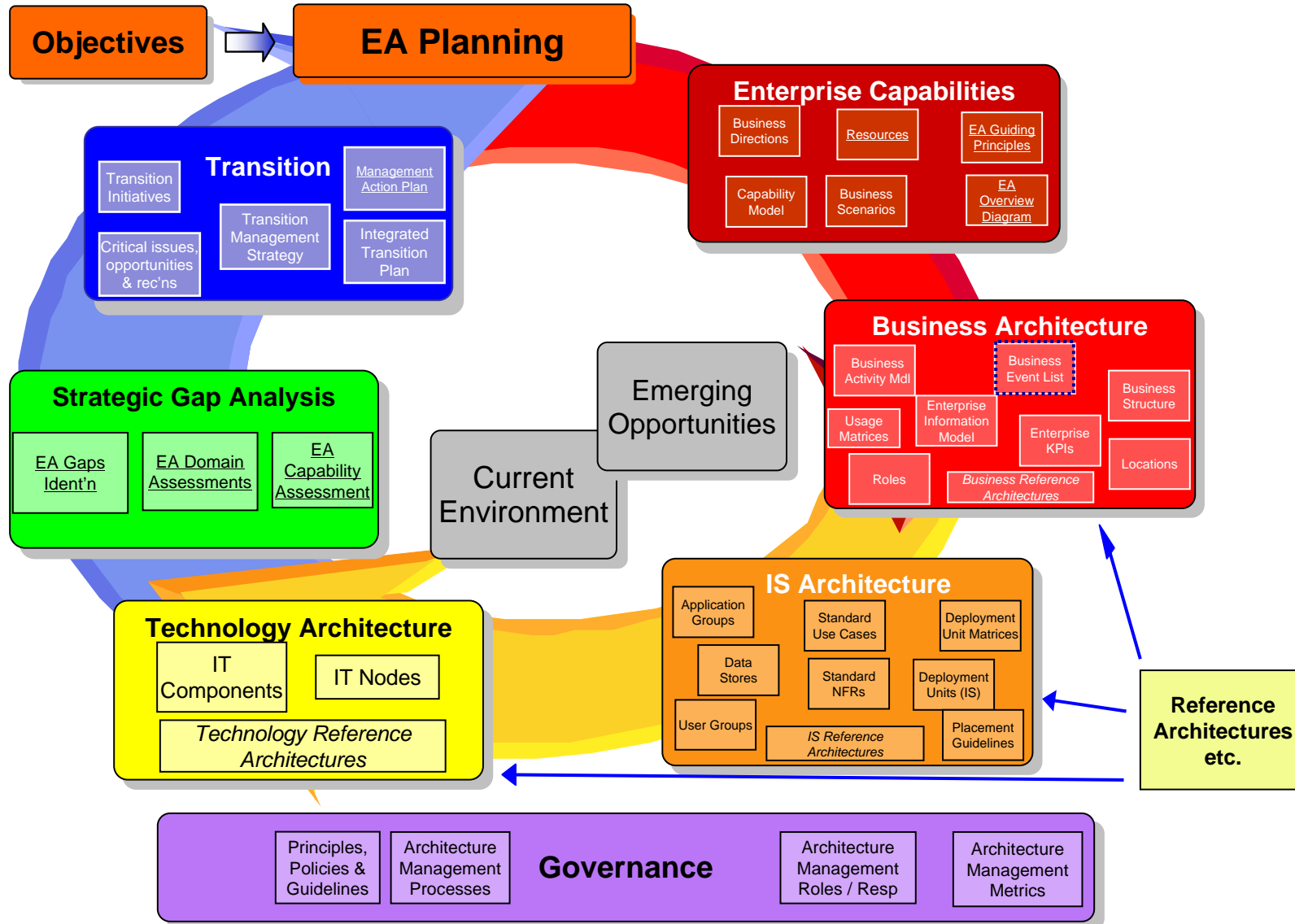
Link To EA MM



IBM EA Tool Support Environment – enables integration and reuse



IBM Leverages the EA Method and Work Products to maintain EA



謝謝

