

Release Notes

Prospect® 8.0.5 P6 (8.0.5.6) – 2008/11/19



DOCUMENT CONTROL

Issue Number: 06

Issue Date: 19 November 2008

Version: 8.0.5 P6 (8.0.5.6)

Build: 8.0.5.6 b2

OWNERSHIP & CONFIDENTIALITY

No part of this document may be disclosed orally or in writing, including by reproduction, to any third party without the prior written consent of IBM Corp. This document, its associated appendices, and any attachments remain the property of IBM Corp. and shall be returned upon request.

Table of Contents

<i>1</i>	<i>Description</i>	<i>4</i>
<i>2</i>	<i>Resolved Issues</i>	<i>5</i>
<i>3</i>	<i>Installation and Upgrade Instructions</i>	<i>6</i>
<i>4</i>	<i>Useful Hints</i>	<i>10</i>
<i>5</i>	<i>Customer Support</i>	<i>21</i>
<i>6</i>	<i>Manifest</i>	<i>22</i>

1 Description

Prospect® 8.0.5 P6 is a patch release for Prospect. Prospect® 8.0.5 P6 is a cumulative release and can be applied on Prospect® 8.0.5 release or on Prospect® 8.0.5 P1, 8.0.5 P2, 8.0.5 P3, 8.0.5 P4 or 8.0.5 P5 patches, in order to bring a system up to the 8.0.5 P6 release point.

Check you have installed on your system one of the versions required as prerequisite, by running the `show_installed` command. Notice that 8.0.5 release is displayed as 8.0.5.0, 8.0.5 P1 patch as 8.0.5.1, 8.0.5 P2 patch as 8.0.5.2, 8.0.5 P3 patch as 8.0.5.3, 8.0.5 P4 patch as 8.0.5.4, and 8.0.5 P5 patch as 8.0.5.5

This patch introduces the solutions for the External Soft Alarms feature.

2 Resolved Issues

This release includes the following resolved issues:

DDTS or ClearQuest / APAR	Released in	Description
SEAd68988 / IZ13905	8.0.5 P1	Need rg_common.sql to set hash_area_size
SEAd69274 / IZ13925	8.0.5 P1	BHUpdate log shows #INVALID# message during copy to BH table
SEAd69079 / IZ14994	8.0.5 P1	ORA-01410 errors occur when reports and soft alarms run
SEAd69384	8.0.5 P1	Improve the 'ps-mgr purge' command
SEAd69411	8.0.5 P1	PartMaint parallel enhancement
SEAd69523 / IZ18779	8.0.5 P1	pm_weekly summations take longer times as time progresses
valnt00019149	8.0.5 P2	Introduce the 3GPP special characters support into the loader component
valnt00040655 / IZ22889	8.0.5 P3	ERICGU: JLOADER- NEED TO REDUCE NUMBER OF DATABASE CONNECTIONS ISSUED
valnt00016464 / IZ16072	8.0.5 P4	AUTOCLEANMAXROWSPERLOOP SETTING ARE BEING OVERWRITTEN
valnt00040618 / IZ17405	8.0.5 P4	PROSPECT CORE 8.0.4.3 - SUMMARIES ARE EXITING WITH RETURN CODE 0EVEN WHEN FAILING WITH ORA ERRORS
valnt00043396 / IZ25999	8.0.5 P4	UDC CREATED THRU PWEB VALIDATES FINE, REPORT USING IT FAILS
valnt00044051 / IZ26496	8.0.5 P4	RE-RUNNING A BH JOB TAKES LONG TIME TO COMPLETE
valnt00046975 / IZ28841	8.0.5 P4	RG_COMMON PACKAGE GETTING INVALIDATED BY PM_WEEKLY
valnt00040597 / IZ19261	8.0.5 P5	CORE 8.0.4.4 : FX RESTARTS OFTEN
valnt00047489 / IZ29225	8.0.5 P5	LOST OR FAILED CLIENT CONNECTIONS DUE TO FX DATASERVER RESTARTS
valnt00051301	8.0.5 P5	Add parent_isalive check to multi-session part_maint, busyhour and summations
valnt00053095	8.0.5 P5	Jloader fails with ORA errors
valnt00053128 / IZ31688	8.0.5 P5	A BUG IN CFGTOOL CAUSED OMISSION OF ALL FIELD_AGGREGATION TYPESEXCEPT 'A' OR 'S' RESULTING IN MISSING NEW COLUMNS FOR SUMMATION
valnt00067170	8.0.5 P6	modify enrich procedures to get RNC LAC from UtranCell
valnt00067127 / IZ37147	8.0.5 P6	THE UNINSTALL OF CORE8.0.5_P5 DOES NOT REMOVE EXTSOFTALARM FROM SUBCLASS_TABLE

3 Installation and Upgrade Instructions

This section describes how to install the Prospect patch, 8.0.5 P6.

In order to completely support External Soft Alarms, this patch consists of two packages: one for Prospect server, `8.0.5-PROSPECT-IF0006-server.tar.gz`, and one for Prospect Client, `8.0.5-PROSPECT-IF0006-client.zip`.

This patch can be uninstalled (see sections 3.1.7 and 3.2.2).

3.1 Installing Prospect Server

This section explains how to install the 8.0.5 P6 Prospect server patch.

3.1.1 Network Timeouts

If your system has a security policy in place such that a session is disconnected after a lengthy period of apparent inactivity, you should disable it during this upgrade. There is the possibility that an upgrade can take a while to run. Since no user input is required during the most of the upgrade, this can make the upgrade session appear idle. If timeouts are not disabled, the upgrade terminal could be disconnected during the upgrade.

3.1.2 Installation Privileges Required

Privilege	Required
Oracle flexpm user DBA role	No
UNIX flexpm user in DBA group	Yes
Root privilege required	No
Oracle sys user password set to default (change_on_install)	No

3.1.3 Install Procedure Syntax

```
install.sh [ -install | -uninstall | -help ]
-install : installs the wmn_pkgb.sql
-uninstall : removes the current hotfix file version and replaces
it with the previous version
-help : help
```

The scripts depend on `$DB_CONNECT`, make sure you have this setup correct.

3.1.4 Pre-Installation Instructions

3.1.4.1 Pre-Install Procedure

1. Login as flexpm and verify \$FLEXPM_HOME is set.
\$ echo \$FLEXPM_HOME
If there are multiple Prospect installations on the server, source the .profile for the Prospect installation for which this patch should be applied.
2. Copy 8.0.5-PROSPECT-IF0006-server.tar.gz into \$FLEXPM_HOME.
3. Uncompress the file.
\$ gunzip 8.0.5-PROSPECT-IF0006-server.tar.gz
4. Untar the package. It will create a subdirectory (patches/Core8.0.5_P6) in \$FLEXPM_HOME and untar the files in to this directory.
\$ gtar -xvpf 8.0.5-PROSPECT-IF0006-server.tar
5. Install the Patch by following the instructions in Section 3.1.5 below.

3.1.5 Installation Instructions

Important! If there are no errors from the Pre-Installation section, then continue with the following steps:

1. Login as flexpm and verify \$FLEXPM_HOME is set.
\$ echo \$FLEXPM_HOME
If there are multiple Prospect installations on the server, source the .profile for the Prospect installation for which this patch should be applied.
2. Go to \$FLEXPM_HOME/patches/Core8.0.5_P6 directory.
\$ cd \$FLEXPM_HOME/patches/Core8.0.5_P6
3. If Prospect Web is accessing this Prospect installation, then use the admin tool to disable the corresponding datasource.
4. Install the patch.
\$ install.sh -install 2>&1| tee install.log

Note: the patch installation program will automatically stop the middleware, install the patch files, and restart the middleware.

3.1.6 Post-Installation Instructions

3.1.6.1 Resource the Profile

If you have not done so already, log off and log on as flexpm.

Copyright 2008 IBM Corporation. All rights reserved.

3.1.6.2 Re-enable the datasource in Prospect Web

Once the installation has completed, re-enable the datasource in Prospect Web (if you disabled it before starting the patch installation)

1. If you disabled any datasources in step 3.1.5.3, then use the admin tool to re-enable them.

3.1.7 Uninstall Procedure

1. Login as flexpm and verify \$FLEXPM_HOME is set.
\$ echo \$FLEXPM_HOME
If there are multiple Prospect installations on the server, source the .profile for the Prospect installation for which this patch should be applied.
2. Go to \$FLEXPM_HOME/patches/Core8.0.5_P6 directory.
\$ cd \$FLEXPM_HOME/patches/Core8.0.5_P6
3. If Prospect Web is accessing this Prospect installation, then use the admin tool to disable the corresponding datasource.
4. Remove the patch.
\$ install.sh -uninstall 2>&1| tee uninstall.log
5. If you disabled any datasources in step 3.1.7.3, then use the admin tool to re-enable them.

Note: the patch un-installation program will automatically stop the middleware, uninstall the patch files, and restart the middleware.

3.2 Installing Prospect Client

External Soft Alarms support (see section 4.1.1) requires you to install the new Prospect Client. If you plan to enable the External Soft Alarms feature, follow the steps described in next sections on how to install the new Prospect Client.

Note: This client is identical to the 8.0.5 P5 client. If you have installed that version you can skip this section.

3.2.1 Installation Instructions

1. Copy 8.0.5-PROSPECT-IF0006-client.zip on your Windows system in a temporary directory.
2. Unzip 8.0.5-PROSPECT-IF0006-client.zip.
3. Go to the directory where you unzipped the file and run setup.exe.

The installer creates the necessary system and application files, updates the system's registry, and adds entries to Windows START menu.

3.2.2 Uninstall Procedure

To uninstall the Prospect client, use the ADD/REMOVE PROGRAMS component of the Windows Control Panel.

4 Useful Hints

4.1 New Configuration Option

4.1.1 Using External Soft Alarms

This patch introduces the support for the External Soft Alarm feature.

External Soft Alarms creates a special "alarm evaluation" process that performs data scrubbing, calculates alarm thresholds, and then pushes the alarm payload into a remote Oracle alarm database, for further analysis or reporting purposes. Access to the remote database is via an Oracle database link.

Note: If you do not have a remote Oracle alarm database, do not configure External Soft Alarms. For information on setting up a remote Oracle alarm database, contact IBM Customer Support.

4.1.1.1 Configuring External Soft Alarms

In order to set up External Soft Alarms, you need to make manual changes to your TNS configuration, as well as create a database link, as outlined in the following sections.

In addition, you have to manually configure some new system variables to use External Soft Alarms. Section 4.1.1.4 describes how to set the appropriate values.

4.1.1.1.1 Configuring TNS

External Soft Alarms requires access to a remote Oracle system and manual changes to the `tnsnames.ora` file.

The `tnsnames.ora` file, which is located in the `$TNS_ADMIN` directory, must be modified so that the `net_service_name` for the remote database is present. The `net_service_name` must match the one used when the database link is created (in the next section).

Following is the basic format for this entry in `tnsnames.ora`:

```
net_service_name=
  (DESCRIPTION=
    (ADDRESS=(protocol_address_information))
    (CONNECT_DATA=
      (SERVICE_NAME=service_name)))
```

Once the file has been modified, to test the connection, use the `tnsping` utility as follows:

```
tnsping <net_service_name>
```

The utility should return an OK and a ping time.

4.1.1.1.2 Creating a Database Link

External Soft Alarms requires the creation of a database link for access to the remote Oracle system. This link must be created manually, then tested to verify that the link is valid. This testing is dependent on the `tnsnames.ora` configuration changes made above.

In order to create the database link, you have to grant the right privileges to Oracle `flexpm` user:

1. using `sqlplus`, logon to Oracle with `sys` account;
2. grant the privileges to create a database link to the `flexpm` account:

```
> grant create database link to flexpm;
```

The creation of the database link relies on the database `GLOBAL_NAMES` setting. Since the default `FALSE` value is used, the database link name does not have to match the remote system's `global_name`. If the value is set to `TRUE`, the database link name must match.

Before running the command to create the database link, you have to logout and login to Oracle as `flexpm`. Notice that the database link must be owned by the `flexpm` schema.

Following is a sample command for creating the database link. The quotes around the connect string are required:

```
CREATE DATABASE LINK <database_name>
CONNECT TO remote_user IDENTIFIED BY remote_pwd
USING 'connect_string';
```

Note: This is a one-time configuration process and will not require a script wrapper. If needed, the link can be dropped and then re-created. Following is the DROP command:

```
DROP DATABASE LINK <database_name>;
```

Once the database link has been created, you need to associate it with the `SAEXT_LINK` system variable.

To test the parameters used in the link, attempt to connect to the remote system by entering the following, for example:

```
$ sqlplus remote_user/remote_pwd@connect_string
```

If login is successful, the link is properly configured.

4.1.1.2 Using External Soft Alarms with Older Prospect Clients

If you are using a Prospect client earlier than version 8.0.5.5, note that you will be unable to create new External Soft Alarms or modify existing External Soft Alarms. If you attempt to modify an existing External Soft Alarm, a message similar to the following is displayed:

Figure 1: Message displayed when attempting to modify an existing External Soft Alarm



On the other hand, when using an older client, you can delete an existing External Soft Alarm.

4.1.1.3 Overview of Changes to the User Interface

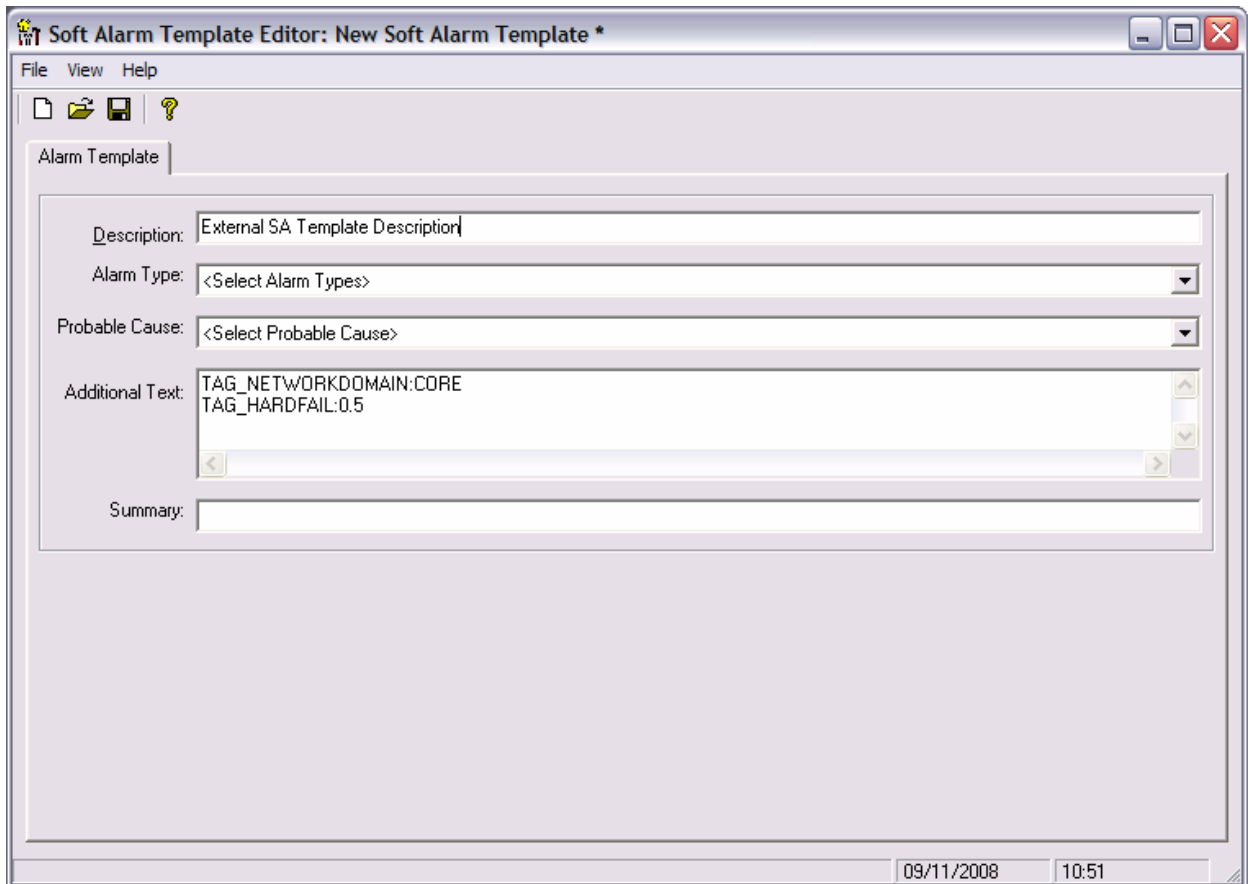
To support External Soft Alarms, changes have been introduced to the following client dialogs:

- Soft Alarm Template Editor
- Soft Alarm Definition Editor – General tab
- Soft Alarm Definition Editor – Alarm Threshold tab

4.1.1.3.1 Soft Alarm Template Editor

In the Soft Alarm Template Editor, the contents of the ADDITIONAL TEXT field are now overloaded. This overloading provides a means to define a TAG/VALUE construct for the purposes of overriding calculation defaults or specifying literal alarm payload values. The example below shows how the NetworkDomain and Technology fields are defined for their respective payload fields. Each TAG is placed on a separate line, starting in the first column:

```
TAG_NETWORKDOMAIN: CORE
TAG_HARDFAIL: 0.5
```

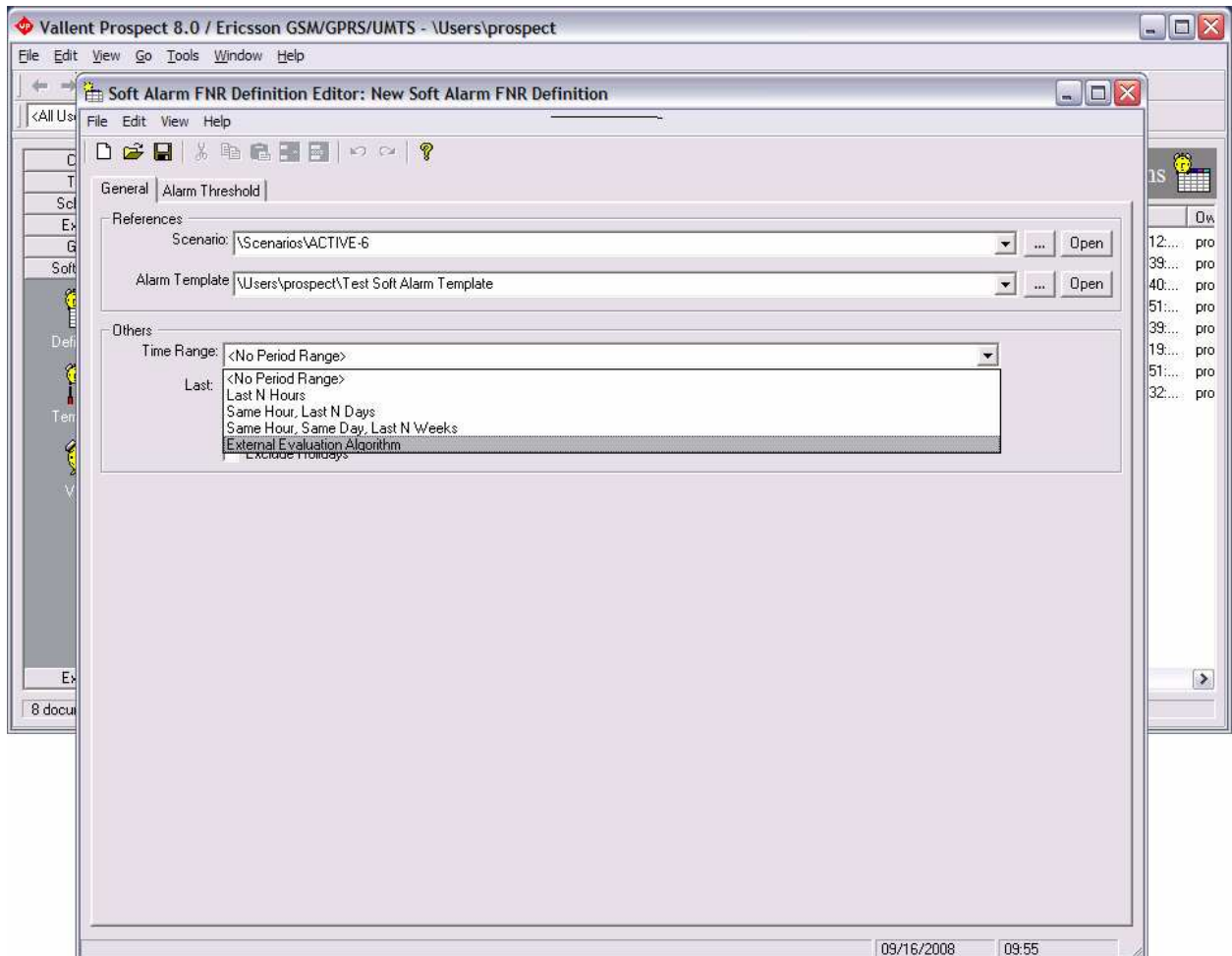
Figure 2: Soft Alarm Template Editor

4.1.1.3.2 Soft Alarm Definition Editor - General Tab

The GENERAL tab of the Soft Alarm Definition Editor has been modified to accept a new TIME RANGE option called EXTERNAL EVALUATION ALGORITHM. This new option signals to the Soft Alarm process that this alarm requires external alarm processing.

A non-external Soft Alarm fires based on the frequency of the fields used in the alarm, therefore if it contained a single field with a 15-minute frequency, it could fire every 15 minutes. On the other hand, alarms that use the EXTERNAL EVALUATION ALGORITHM fire on an hourly basis. When the EXTERNAL EVALUATION ALGORITHM option is selected, this same field is held until all four of its 15-minute events for the hour have arrived.

After selecting the new option, the LAST PERIODS spinner is set to 'week(s)'. The remaining widgets on the GENERAL tab continue to operate as normal.

Figure 3: Soft Alarm Definition Editor - General Tab

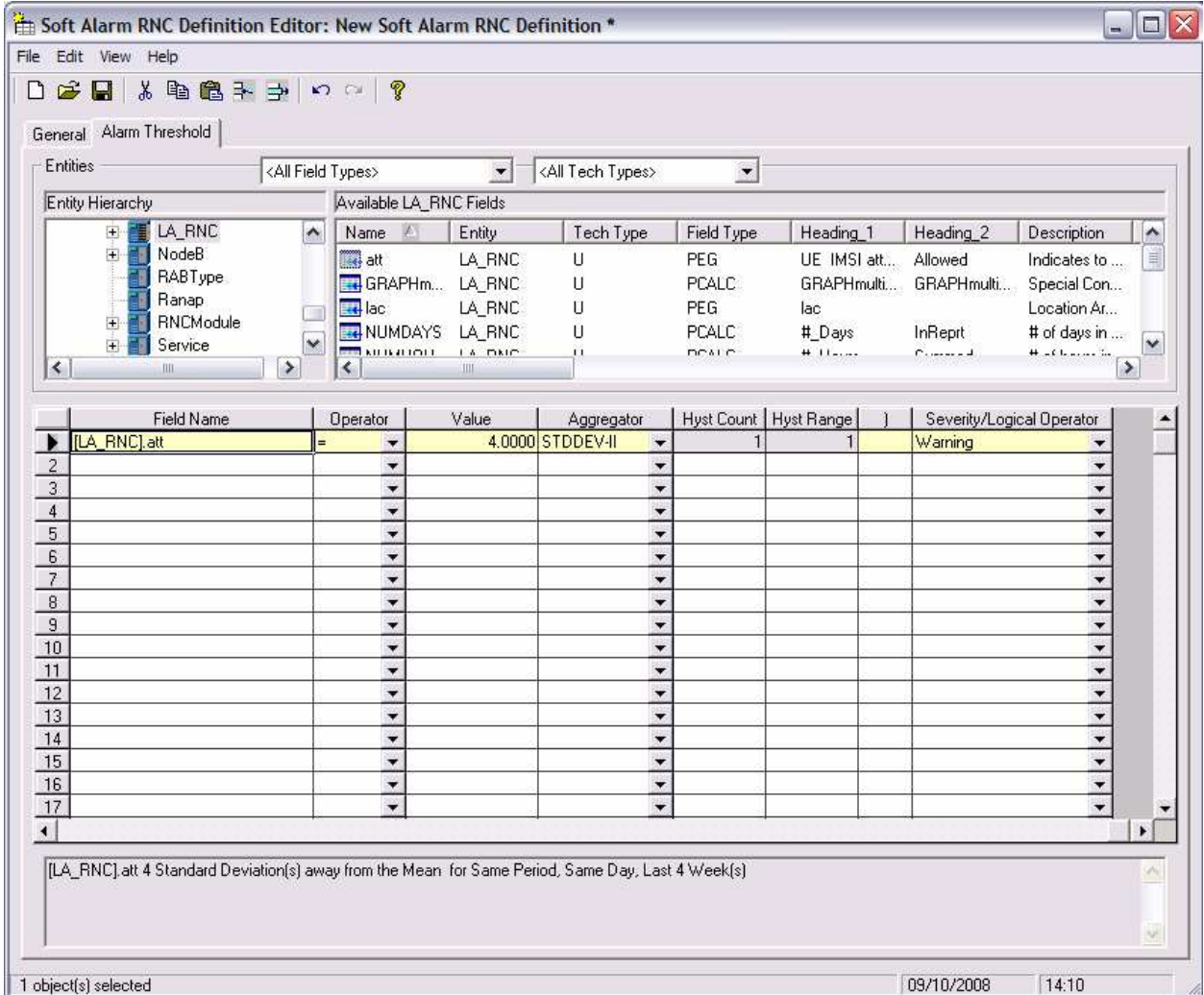
4.1.1.3.3 Soft Alarm Definition Editor - Alarm Threshold Tab

Two new aggregator options (STDDEV-I and STDDEV-II) have been added. These options are exclusive to alarm definitions with TIME RANGE set to EXTERNAL EVALUATION ALGORITHM. There are rigid requirements for the field used within the threshold:

- The following fields are ignored in External Soft Alarms: '(,)', threshold, operator, and hysteresis. In addition, logical operators are not valid in External Soft Alarm definitions.
- The first line of the FIELD NAME must contain the name of the UDC. The UDC must have a data type of Integer (I) or Float (F) to operate properly. Note: The existing Soft Alarms GUI for alarm definition does not enforce this restriction.
- The VALUE field is interpreted as the number of standard deviations from the mean. This is considered to be +/-, regardless of the sign.

- The SEVERITY field uses the standard Prospect values. Note: For this field, Prospect supplies either a severity string or a NULL, based on the system variable SAEXT_SEVERITY.

Figure 4: Soft Alarm Definition Editor - Alarm Threshold Tab



Changes to an existing Soft Alarm that uses an external alarm time range raise a warning dialog as follows:

Changing an external alarm SA will not modify existing cached alarm data and may cause the generation of false alarms. Do you want to continue?

4.1.1.4 New System Variables

The system variables listed in next table have been added to support External Soft Alarms. The WM_SYSVAL package is used as the interface to these variables.

If you want to use External Soft Alarms, you must set the following variables to appropriate values:

- in order to activate the feature, change `SAEXT_SOFTALARM` to `TRUE`;
- set `SAEXT_ENRICH` to `SAEXT.ENRICH_ERIC` for EricssonUMTS or `SAEXT.ENRICH_LUC` for Lucent, depending on your installation;
- change `SAEXT_LINK` to your database link name, created in section 4.1.1.1.2. A typical link name is `SAEXT`;
- set `SAEXT_ORIGIN` to the machine hostname where your database is installed;
- `SAEXT_PROCEDURE` is the name of the fully qualified remote procedure;
- set `SAEXT_VENDOR` to either `ERICSSON` or `LUCENT`, depending on your installation;
- override `SAEXT_TAG_HARDFAIL` as described in section 4.1.1.4.1.

Following is a sample command for changing External Soft Alarms values:

```
SQL> exec wm_sysval.update_sysval('SAEXT_SOFTALARM','TRUE');
SQL> commit;
```

Table 1: New system variables

Name	Usage	Default	Description
SAEXT_AGGREGATOR	getString	STDDEV-I	Contains the default external alarm aggregator type. This is a client control value.
SAEXT_DEQUEUE_TIMEOUT	getInteger	5	Contains the dequeue timeout to the External Soft Alarms queue, in seconds.
SAEXT_ENRICH	getString	None	Contains the procedure (<code>Package.Procedure</code>) for enriching the alarm information. It should be set to <code>SAEXT.ENRICH_ERIC</code> for EricssonUMTS or <code>SAEXT.ENRICH_LUC</code> for LucentUMTS.

SAEXT_ENRICH_DAYS	getInteger	7	Number of days to search for data enrichment (used only if needed).
SAEXT_LINK	getString	SAEXT	Contains the name of the database link, which is used to push data into the remote database. The link must have been created before usage.
SAEXT_MIN_STORAGE	getInteger	35	Minimum number of days for the PartMaint past_part value.
SAEXT_ORIGIN	getString	Host name	Host name of the Prospect system
SAEXT_PROCEDURE	getString	Schema.Package. Procedure	This variable must be manually configured to contain the schema-qualified name of the remote procedure call, in the form: schema.package.procedure
SAEXT_SEVERITY	getBoolean	FALSE	Toggle for determining Severity strings sent to the remote alarm database. If set to FALSE, send Severity as NULL. If set to TRUE, send Severity as a text string.
SAEXT_SOFTALARM	getBoolean	FALSE	Controls whether the feature is available. If set to FALSE, deactivate External Soft Alarms. If set to TRUE, activate it.
SAEXT_STDDEV	getFloat	3.29	Contains the default standard deviation for an external alarm. This is a client control value.

SAEXT_STORE_LE_ZERO	getBoolean	FALSE	Toggle for controlling storage of KPI values <=0. If set to FALSE, do not store values <=0. If set to TRUE, store all values. Note: NULL values are never stored.
SAEXT_TECH	getString	UMTS	GSM or UMTS.
SAEXT_VENDOR	getString	None	Vendor name. Note: This value may require manual configuration due to the product installation order.
SAEXT_TAG_HARDFAIL	getFloat	0.5	Used in STDDEV-II as a minimum value for the STDDEV calculation. This can be overridden (see SAEXT_TAG below).
SAEXT_TAG_NETWORKDOMAIN	getString	RAN	This can be overridden (see SAEXT_TAG below).

4.1.1.4.1 SAEXT_TAG Variables

Unlike SAEXT variables, SAEXT_TAG variables can be overridden, on an alarm basis, with a TAG in the ADDITIONAL TEXT field of the Alarm Template. The logic is as follows: SAEXT_TAG_XX can be overridden with TAG_XX. For example:

```
TAG_NETWORKDOMAIN: CORE
TAG_HARDFAIL: 0.5
```

4.1.1.5 New Init Parameters

Following are the init parameters that have been added to support External Soft Alarms. Depending on your system, you may need to adjust these parameters.

Table 2: New init parameters

Init Parameter	Type	Comment
GLOBAL_NAMES=FALSE	Dynamic	Prospect uses the default, which is <code>FALSE</code> . If a modified installation uses <code>TRUE</code> , the database link name must match the remote <code>GLOBAL_NAME</code> . For this possibility, the <code>SAEXT_LINK</code> variable holds the database link name for the remote system.
OPEN_LINKS=4	Static	This default value should be adequate, because only a single remote alarm database exists.
OPEN_LINKS_PER_INSTANCE=4	Static	This is the default value, but in a multi-schema system a higher number may be required. This setting could also be affected by other non-Prospect schemas within the same instance.
DBLINK_ENCRYPT_LOGIN=FALSE	Static	If set to <code>FALSE</code> , a failed connection sends the password in plain text, which could be a customer security issue.

4.1.1.6 Alarm KPI Table and Storage

The External Soft Alarm KPIs are stored in a new, daily partitioned table named `SAEXT_KPI_TAB`. Record deletion takes place when PartMaint drops old partitions.

The `SAEXT_KPI_TAB` table uses a new partition type called 'extSoftAlarm'. The default number of partitions is set to minimum of 35 days and managed by the `past_part_maint.sh` script.

```

: flexpm@catmandu ; past_part_maint.sh
**** Past Part settings are ****
extSoftAlarm    35          Days
sBHDaily        1           Weeks
sSUMDaily       1           Weeks
sSUMMonthly     1           Months
sSUMWeekly      1           Weeks
scenario         11          Days
softalarm       5           Days

```

traffic 3 Days

4.1.2 part_tablespaces.sh cli

This patch contains the feature that enhances the granularity of parallel execution during the Analyze phase of part_maint process.

This way, it improves the performances of Analyze phase of part_maint process.

In order to handle the data manipulation for this feature, a new cli called `part_tablespaces.sh` has been introduced. Following the cli usage:

```
part_tablespaces.sh -O
part_tablespaces.sh -S [ -T <tablespace> | -t <table> ] [ -m
<degree> | -s <degree> ]
part_tablespaces.sh -h
```

Where:

```
-O                                 : output
-S                                 : set
-T <tablespace>                 : for the specified tablespace
-t <table>                        : for the specified table
-m <degree>                       : move parallelism degree during part_maint
activity
-s <degree>                       : analyze parallelism degree during part_maint
activity
                                  : <degree> = 0: reset value (use the upper
                                  hierarchy level)
                                  : <degree> = 1: disable parallelism for
specified tablespace/table
parallelism                       : <degree> = >1 && <99: apply specified
-h                                 : help, show usage
```

For appropriate parameter settings, please, contact IBM Customer support.

5 Customer Support

Contact IBM Customer Support if a problem is encountered during the installation of this patch.

6 Manifest

Prospect 8.0.5 P6 contains:

```
patches
patches/Core8.0.5_P6
patches/Core8.0.5_P6/backup
patches/Core8.0.5_P6/backup/install
patches/Core8.0.5_P6/backup/install/db
patches/Core8.0.5_P6/backup/install/db/Oracle8i
patches/Core8.0.5_P6/backup/install/db/Oracle8i/bh
patches/Core8.0.5_P6/backup/install/db/Oracle8i/cfgtool
patches/Core8.0.5_P6/backup/install/db/Oracle8i/dictionary
patches/Core8.0.5_P6/backup/install/db/Oracle8i/event
patches/Core8.0.5_P6/backup/install/db/Oracle8i/jloader
patches/Core8.0.5_P6/backup/install/db/Oracle8i/metadata
patches/Core8.0.5_P6/backup/install/db/Oracle8i/metadata/event
patches/Core8.0.5_P6/backup/install/db/Oracle8i/metadata/saext
patches/Core8.0.5_P6/backup/install/db/Oracle8i/part_maint
patches/Core8.0.5_P6/backup/install/db/Oracle8i/rg
patches/Core8.0.5_P6/backup/install/db/Oracle8i/scheduler
patches/Core8.0.5_P6/backup/install/db/Oracle8i/scheduler/event
patches/Core8.0.5_P6/backup/install/db/Oracle8i/scheduler/saext_aq
patches/Core8.0.5_P6/backup/install/db/Oracle8i/scheduler/saext_build
patches/Core8.0.5_P6/backup/install/db/Oracle8i/scheduler/saext_message
patches/Core8.0.5_P6/backup/install/db/Oracle8i/scheduler/saext_queue_admin
patches/Core8.0.5_P6/backup/install/db/Oracle8i/softalarm
patches/Core8.0.5_P6/backup/install/db/Oracle8i/softalarm/sacheck
patches/Core8.0.5_P6/backup/install/db/Oracle8i/softalarm/saext
patches/Core8.0.5_P6/backup/install/db/Oracle8i/summarize
patches/Core8.0.5_P6/backup/install/db/Oracle8i/utility
patches/Core8.0.5_P6/backup/install/db/Oracle8i/xr
patches/Core8.0.5_P6/backup/install/dbuser
patches/Core8.0.5_P6/backup/install/peik
patches/Core8.0.5_P6/backup/install/peik/loaders
patches/Core8.0.5_P6/backup/install/peik/loaders/scripts
patches/Core8.0.5_P6/backup/install/pm
patches/Core8.0.5_P6/backup/install/pm/adm
patches/Core8.0.5_P6/backup/install/pm/bin
patches/Core8.0.5_P6/backup/install/pm/extra
patches/Core8.0.5_P6/backup/install/pm/extra/saext
patches/Core8.0.5_P6/backup/install/pm/extra/saext/bin
patches/Core8.0.5_P6/backup/install/pm/extra/saext/conf
patches/Core8.0.5_P6/backup/install/pm/extra/saext/lib
```

Copyright 2008 IBM Corporation. All rights reserved.

```
patches/Core8.0.5_P6/backup/install/pm/jloader
patches/Core8.0.5_P6/backup/install/pm/jloader/lib
patches/Core8.0.5_P6/backup/install/pm/lib
patches/Core8.0.5_P6/backup/install/pm/lib/wm
patches/Core8.0.5_P6/backup/install/pm/run
patches/Core8.0.5_P6/backup/install/sw
patches/Core8.0.5_P6/backup/install/sw/oracle
patches/Core8.0.5_P6/install
patches/Core8.0.5_P6/install/aggr_patch.sql
patches/Core8.0.5_P6/install/compile-schema.sql
patches/Core8.0.5_P6/install/Core8.0.5_P6.build
patches/Core8.0.5_P6/install/db
patches/Core8.0.5_P6/install/db/Oracle8i
patches/Core8.0.5_P6/install/db/Oracle8i/bh
patches/Core8.0.5_P6/install/db/Oracle8i/bh/BH_Update.sql
patches/Core8.0.5_P6/install/db/Oracle8i/bh/BH_UpdatePack.sql
patches/Core8.0.5_P6/install/db/Oracle8i/cfgtool
patches/Core8.0.5_P6/install/db/Oracle8i/cfgtool/ConfigToolParser11.sql
patches/Core8.0.5_P6/install/db/Oracle8i/cfgtool/create_schema_objects.sql
patches/Core8.0.5_P6/install/db/Oracle8i/dictionary
patches/Core8.0.5_P6/install/db/Oracle8i/dictionary/wmn_pkgb.sql
patches/Core8.0.5_P6/install/db/Oracle8i/dictionary/wmn_schema.sql
patches/Core8.0.5_P6/install/db/Oracle8i/event
patches/Core8.0.5_P6/install/db/Oracle8i/event/en_eventmsgPack.sql
patches/Core8.0.5_P6/install/db/Oracle8i/event/en_event_message.sql
patches/Core8.0.5_P6/install/db/Oracle8i/event/en_event_schema.sql
patches/Core8.0.5_P6/install/db/Oracle8i/event/en_event_statprocs.sql
patches/Core8.0.5_P6/install/db/Oracle8i/jloader
patches/Core8.0.5_P6/install/db/Oracle8i/jloader/jloader_util_pkg.sql
patches/Core8.0.5_P6/install/db/Oracle8i/jloader/jloader_util_pkgb.sql
patches/Core8.0.5_P6/install/db/Oracle8i/metadata
patches/Core8.0.5_P6/install/db/Oracle8i/metadata/event
patches/Core8.0.5_P6/install/db/Oracle8i/metadata/event/Makefile
patches/Core8.0.5_P6/install/db/Oracle8i/metadata/event/saext_eventType.sql
patches/Core8.0.5_P6/install/db/Oracle8i/metadata/Makefile
patches/Core8.0.5_P6/install/db/Oracle8i/metadata/saext
patches/Core8.0.5_P6/install/db/Oracle8i/metadata/saext/clean_part_table.sql
patches/Core8.0.5_P6/install/db/Oracle8i/metadata/saext/clean_system_val.sql
patches/Core8.0.5_P6/install/db/Oracle8i/metadata/saext/Makefile
patches/Core8.0.5_P6/install/db/Oracle8i/metadata/saext/pop_part_table.sql
patches/Core8.0.5_P6/install/db/Oracle8i/metadata/saext/pop_system_val.sql
patches/Core8.0.5_P6/install/db/Oracle8i/part_maint
patches/Core8.0.5_P6/install/db/Oracle8i/part_maint/createTables.sql
patches/Core8.0.5_P6/install/db/Oracle8i/part_maint/extended_part_maint.sql
```

Copyright 2008 IBM Corporation. All rights reserved.

```
patches/Core8.0.5_P6/install/db/Oracle8i/part_maint/Makefile
patches/Core8.0.5_P6/install/db/Oracle8i/part_maint/part_maint.sql
patches/Core8.0.5_P6/install/db/Oracle8i/part_maint/part_maintDrop.sql
patches/Core8.0.5_P6/install/db/Oracle8i/part_maint/part_maintPack.sql
patches/Core8.0.5_P6/install/db/Oracle8i/part_maint/part_task.sql
patches/Core8.0.5_P6/install/db/Oracle8i/rg
patches/Core8.0.5_P6/install/db/Oracle8i/rg/rg_common.sql
patches/Core8.0.5_P6/install/db/Oracle8i/scheduler
patches/Core8.0.5_P6/install/db/Oracle8i/scheduler/event
patches/Core8.0.5_P6/install/db/Oracle8i/scheduler/event/en_event_statPack.sql
patches/Core8.0.5_P6/install/db/Oracle8i/scheduler/Makefile
patches/Core8.0.5_P6/install/db/Oracle8i/scheduler/saext_aq
patches/Core8.0.5_P6/install/db/Oracle8i/scheduler/saext_aq/Makefile
patches/Core8.0.5_P6/install/db/Oracle8i/scheduler/saext_aq/saext_aq.sql
patches/Core8.0.5_P6/install/db/Oracle8i/scheduler/saext_aq/saext_aqDrop.sql
patches/Core8.0.5_P6/install/db/Oracle8i/scheduler/saext_aq/saext_aqPack.sql
patches/Core8.0.5_P6/install/db/Oracle8i/scheduler/saext_build
patches/Core8.0.5_P6/install/db/Oracle8i/scheduler/saext_build/create_saext_schema
.sql
patches/Core8.0.5_P6/install/db/Oracle8i/scheduler/saext_build/drop_saext_schema.s
ql
patches/Core8.0.5_P6/install/db/Oracle8i/scheduler/saext_build/Makefile
patches/Core8.0.5_P6/install/db/Oracle8i/scheduler/saext_build/saext_dropQueues.sq
l
patches/Core8.0.5_P6/install/db/Oracle8i/scheduler/saext_build/saext_makeQueues.sq
l
patches/Core8.0.5_P6/install/db/Oracle8i/scheduler/saext_message
patches/Core8.0.5_P6/install/db/Oracle8i/scheduler/saext_message/Makefile
patches/Core8.0.5_P6/install/db/Oracle8i/scheduler/saext_message/saext_message.sql
patches/Core8.0.5_P6/install/db/Oracle8i/scheduler/saext_message/saext_messageDrop
.sql
patches/Core8.0.5_P6/install/db/Oracle8i/scheduler/saext_message/saext_messagePack
.sql
patches/Core8.0.5_P6/install/db/Oracle8i/scheduler/saext_queue_admin
patches/Core8.0.5_P6/install/db/Oracle8i/scheduler/saext_queue_admin/CreateQueue.s
ql
patches/Core8.0.5_P6/install/db/Oracle8i/scheduler/saext_queue_admin/CreateQueueDr
op.sql
patches/Core8.0.5_P6/install/db/Oracle8i/scheduler/saext_queue_admin/CreateQueuePa
ck.sql
patches/Core8.0.5_P6/install/db/Oracle8i/scheduler/saext_queue_admin/Makefile
patches/Core8.0.5_P6/install/db/Oracle8i/softalarm
patches/Core8.0.5_P6/install/db/Oracle8i/softalarm/aggregator.ctl
patches/Core8.0.5_P6/install/db/Oracle8i/softalarm/aggregator.dat
```

Copyright 2008 IBM Corporation. All rights reserved.

```
patches/Core8.0.5_P6/install/db/Oracle8i/softalarm/create_soft_alarm_schema.sql
patches/Core8.0.5_P6/install/db/Oracle8i/softalarm/Makefile
patches/Core8.0.5_P6/install/db/Oracle8i/softalarm/sacheck
patches/Core8.0.5_P6/install/db/Oracle8i/softalarm/sacheck/schedcheck.sql
patches/Core8.0.5_P6/install/db/Oracle8i/softalarm/saext
patches/Core8.0.5_P6/install/db/Oracle8i/softalarm/saext/drop_saext.sql
patches/Core8.0.5_P6/install/db/Oracle8i/softalarm/saext/drop_saext_alarm_tab.sql
patches/Core8.0.5_P6/install/db/Oracle8i/softalarm/saext/drop_saext_kpi_tab.sql
patches/Core8.0.5_P6/install/db/Oracle8i/softalarm/saext/drop_saext_pm.sql
patches/Core8.0.5_P6/install/db/Oracle8i/softalarm/saext/Makefile
patches/Core8.0.5_P6/install/db/Oracle8i/softalarm/saext/saext_alarm_tab.sql
patches/Core8.0.5_P6/install/db/Oracle8i/softalarm/saext/saext_kpi_tab.sql
patches/Core8.0.5_P6/install/db/Oracle8i/softalarm/saext/saext_pkg.sql
patches/Core8.0.5_P6/install/db/Oracle8i/softalarm/saext/saext_pkgb.sql
patches/Core8.0.5_P6/install/db/Oracle8i/softalarm/saext/saext_pm_pkg.sql
patches/Core8.0.5_P6/install/db/Oracle8i/softalarm/saext/saext_pm_pkgb.sql
patches/Core8.0.5_P6/install/db/Oracle8i/softalarm/sa_snap_pkgb.sql
patches/Core8.0.5_P6/install/db/Oracle8i/softalarm/sa_softalarm_trigger.sql
patches/Core8.0.5_P6/install/db/Oracle8i/softalarm/time_range.ctl
patches/Core8.0.5_P6/install/db/Oracle8i/softalarm/time_range.dat
patches/Core8.0.5_P6/install/db/Oracle8i/summarize
patches/Core8.0.5_P6/install/db/Oracle8i/summarize/summarize.sql
patches/Core8.0.5_P6/install/db/Oracle8i/summarize/summarizePack.sql
patches/Core8.0.5_P6/install/db/Oracle8i/utility
patches/Core8.0.5_P6/install/db/Oracle8i/utility/autoclean.sql
patches/Core8.0.5_P6/install/db/Oracle8i/utility/run_sql.sql
patches/Core8.0.5_P6/install/db/Oracle8i/xr
patches/Core8.0.5_P6/install/db/Oracle8i/xr/xr_util.sql
patches/Core8.0.5_P6/install/dbuser
patches/Core8.0.5_P6/install/dbuser/prospect_grants.sql
patches/Core8.0.5_P6/install/metadata_saext_patch.sql
patches/Core8.0.5_P6/install/part_maint_drop.sql
patches/Core8.0.5_P6/install/peik
patches/Core8.0.5_P6/install/peik/loaders
patches/Core8.0.5_P6/install/peik/loaders/scripts
patches/Core8.0.5_P6/install/peik/loaders/scripts/file_decode.pl
patches/Core8.0.5_P6/install/pm
patches/Core8.0.5_P6/install/pm/adm
patches/Core8.0.5_P6/install/pm/adm/part_tablespace.sh
patches/Core8.0.5_P6/install/pm/adm/wmpm-init
patches/Core8.0.5_P6/install/pm/adm/wmpm.sh
patches/Core8.0.5_P6/install/pm/bin
patches/Core8.0.5_P6/install/pm/bin/commander10g
patches/Core8.0.5_P6/install/pm/bin/commander9i
```

Copyright 2008 IBM Corporation. All rights reserved.

```
patches/Core8.0.5_P6/install/pm/bin/doproc
patches/Core8.0.5_P6/install/pm/bin/loader10g
patches/Core8.0.5_P6/install/pm/bin/loader9i
patches/Core8.0.5_P6/install/pm/bin/pmclient
patches/Core8.0.5_P6/install/pm/bin/qc
patches/Core8.0.5_P6/install/pm/bin/rgp
patches/Core8.0.5_P6/install/pm/bin/softalarmer
patches/Core8.0.5_P6/install/pm/bin/wmpm
patches/Core8.0.5_P6/install/pm/extra
patches/Core8.0.5_P6/install/pm/extra/saext
patches/Core8.0.5_P6/install/pm/extra/saext/bin
patches/Core8.0.5_P6/install/pm/extra/saext/bin/saext.ksh
patches/Core8.0.5_P6/install/pm/extra/saext/conf
patches/Core8.0.5_P6/install/pm/extra/saext/conf/log4j.xml
patches/Core8.0.5_P6/install/pm/extra/saext/lib
patches/Core8.0.5_P6/install/pm/extra/saext/lib/commons-cli-1.0.jar
patches/Core8.0.5_P6/install/pm/extra/saext/lib/commons-lang-2.2.jar
patches/Core8.0.5_P6/install/pm/extra/saext/lib/log4j-1.2.8.jar
patches/Core8.0.5_P6/install/pm/extra/saext/lib/ojdbc14.jar
patches/Core8.0.5_P6/install/pm/extra/saext/lib/saext.jar
patches/Core8.0.5_P6/install/pm/extra/saext/lib/wm-jam-common.jar
patches/Core8.0.5_P6/install/pm/jloader
patches/Core8.0.5_P6/install/pm/jloader/lib
patches/Core8.0.5_P6/install/pm/jloader/lib/jloader.jar
patches/Core8.0.5_P6/install/pm/lib
patches/Core8.0.5_P6/install/pm/lib/wm
patches/Core8.0.5_P6/install/pm/lib/wm/libdataDictionary.so
patches/Core8.0.5_P6/install/pm/lib/wm/libexpressions.so
patches/Core8.0.5_P6/install/pm/lib/wm/libsaalarms.so
patches/Core8.0.5_P6/install/pm/lib/wm/libsaageneral.so
patches/Core8.0.5_P6/install/pm/lib/wm/libsaainputs.so
patches/Core8.0.5_P6/install/pm/lib/wm/libsaareports.so
patches/Core8.0.5_P6/install/pm/run
patches/Core8.0.5_P6/install/pm/run/bhd.sh
patches/Core8.0.5_P6/install/pm/run/bhrgp.sh
patches/Core8.0.5_P6/install/pm/run/download
patches/Core8.0.5_P6/install/pm/run/ps-mgr
patches/Core8.0.5_P6/install/pm/run/rgp.sh
patches/Core8.0.5_P6/install/pm/run/udr.sh
patches/Core8.0.5_P6/install/saext_drop.sql
patches/Core8.0.5_P6/install/saext_schema_patch.sql
patches/Core8.0.5_P6/install/schema_patch.sql
patches/Core8.0.5_P6/install/sw
patches/Core8.0.5_P6/install/sw/oracle
```

Copyright 2008 IBM Corporation. All rights reserved.

```
patches/Core8.0.5_P6/install/sw/oracle/compile-schema.sql
patches/Core8.0.5_P6/install/trigger_patch.sql
patches/Core8.0.5_P6/install/unpatch.sql
patches/Core8.0.5_P6/install.sh
```

Created/Revised by	Date of Creation/Update	Summary of Changes
EN	2008/11/19	Document created

