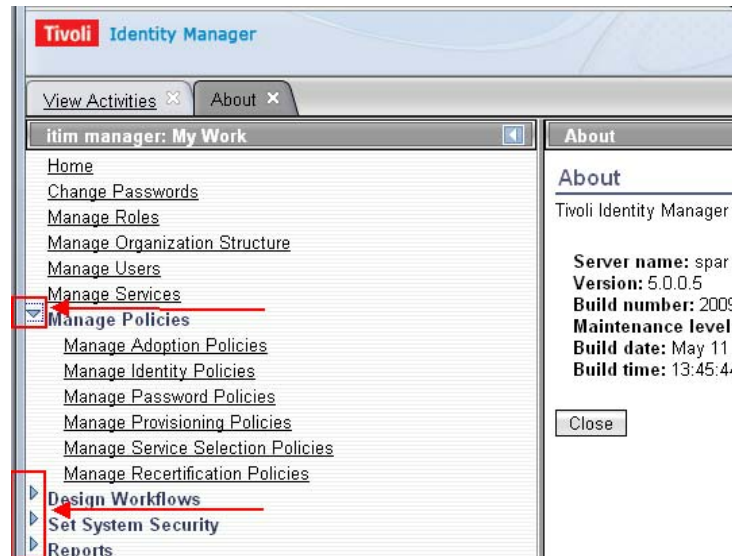


**Defect:** IZ65618

**Symptom:** ITIM using Internet Explorer 8 installed on Windows Server 2008 R2 (64 bit), or if IE8 is running in compatibility mode, function of twisties (triangular elements on UI used to collapse and expand menu sections, see Fig. 1) and other functionalities related to enabling or disabling radio button groups or checkboxes will be affected if **about:blank** is not included in IE8's trusted sites setting.



*Fig. 1 – “Twisties” have been indicated*

**Note:**

- 1] If ITIM twisties, radio button groups, or checkboxes are not functioning in IE8, execute these steps to correct the issue:
  1. Open Tools -> Internet Options -> Security -> Trusted Sites – Sites
  2. Add “**about:blank**” to Trusted site.
  3. Close Trusted Site Window.
  4. Click OK to apply new changes.
- 2] If a user is unable to view the ITIM login page using the URL - <http://hostname:port/itim/console> Execute the following steps:

Add the ITIM 5.0 URL to the list of trusted sites. The ITIM 5.0 Login page appears properly and the user is able to login successfully.

While using IE8 on Windows 2003, a window popup prompts to add the ITIM URL to trusted sites but no such window appears in case of IE8 on Windows 2008 R2.