



***The Modern Mainframe...
At the Heart of Your Business***

Using SOA to Build Your Next Generation Solution



© 2006 IBM Corporation

Service Oriented Finance's Business Problem

We want to increase revenue by selling our car loans through external Brokers



**Service Oriented Finance
CEO**

Service Oriented Finance's Technical Challenges

How can Brokers access our existing car loan application?



Service Oriented Finance
CIO

Leverage Existing Investments

25% of the world's capital investment is in I/T*. The only way to innovate in a cost-effective manner is to leverage these investments



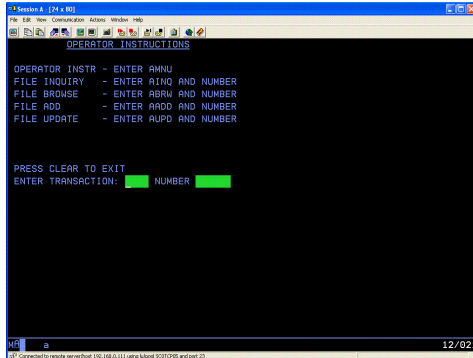
IBM

"Many of the I/T assets required to enable an on-demand business already exist and have been supporting the business for years or even decades. Enabling these I/T assets to participate in integrated business processes is key to improving responsiveness".

DH Brown Associates, Inc.
Application Transformation: Leveraging Existing I/T Assets to Build Competitive Advantage (September 2004)

* Does not include real estate or government assets

Existing CICS Investment: SOF Customer Management System



We have invested millions of dollars in this asset



Service Oriented Finance
CIO

Existing application consists of CICS programs accessed via "green screen" terminals.

How do we make this available to external Broker applications?

Use SOA to Unlock Your Assets

We want to make portions of this application available to external Loan Brokers



Service Oriented Finance
CIO

You can unlock your existing assets using a Service Oriented Architecture



IBM

The Basics: What is SOA?

... a service?

A **repeatable business task** – e.g.,
check customer credit;
open new account



... **service oriented architecture (SOA)?**

An IT **architectural style** that supports
integrating your
business as linked
services

"SOA impacts every aspect of IT and business."

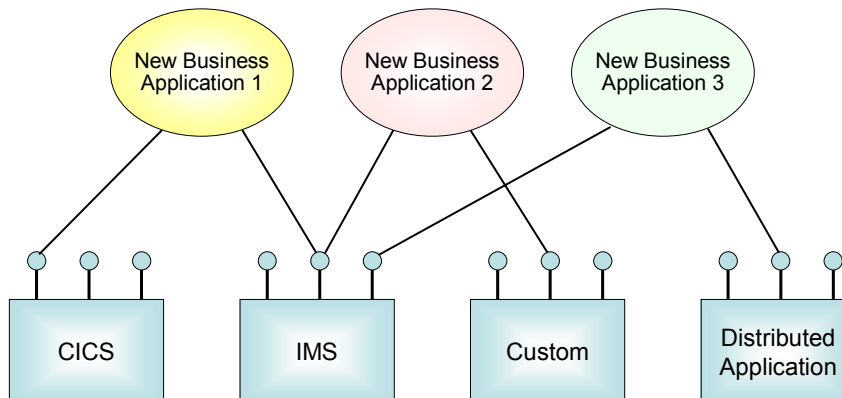
Gartner

02 - SOA - The Foundation of your Next Gen Sol v2.0.ppt

8

Steps to SOA

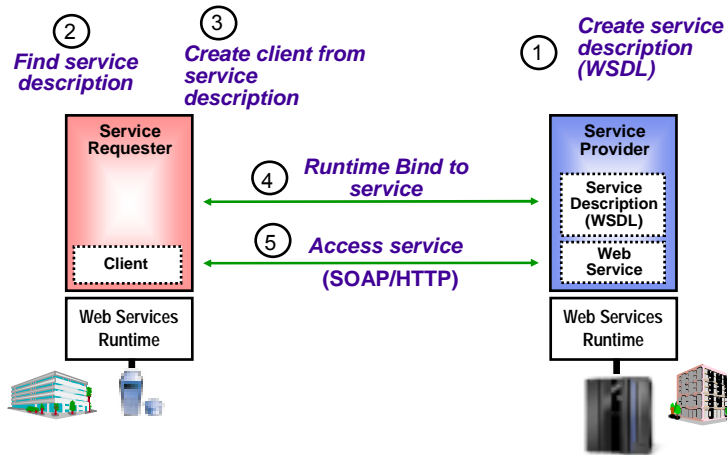
- Expose enterprise assets as services
- Create a rich environment for easy reuse
- Combine services to create new applications



02 - SOA - The Foundation of your Next Gen Sol v2.0.ppt

9

Introduction to SOA: Web Services



02 - SOA - The Foundation of your Next Gen Sol v2.0.ppt

10

Exposing CICS Applications as Web Services

So Web Services give me reusability and interoperability. But how do I get my CICS programs to talk Web Services?



Service Oriented Finance
CIO

CICS TS Version 3.1 has built-in capabilities to expose programs as web services

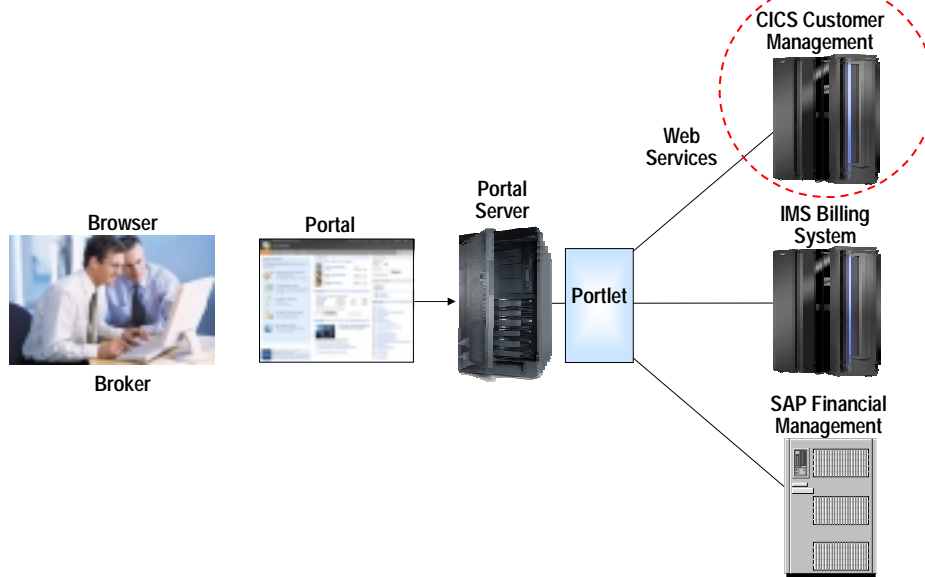


IBM

02 - SOA - The Foundation of your Next Gen Sol v2.0.ppt

11

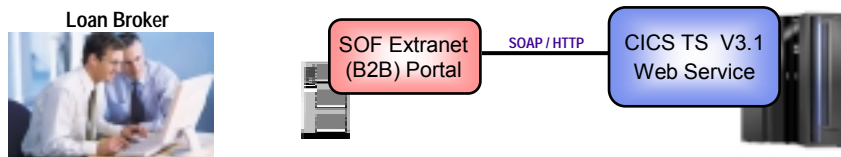
Service Oriented Finance Solution Picture



02 - SOA - The Foundation of your Next Gen Sol v2.0.ppt

12

DEMO: Broker Calls CICS Program Using Web Services



- Loan Brokers use the SOF Portal. The Portal talks to SOF's Loan application using web services

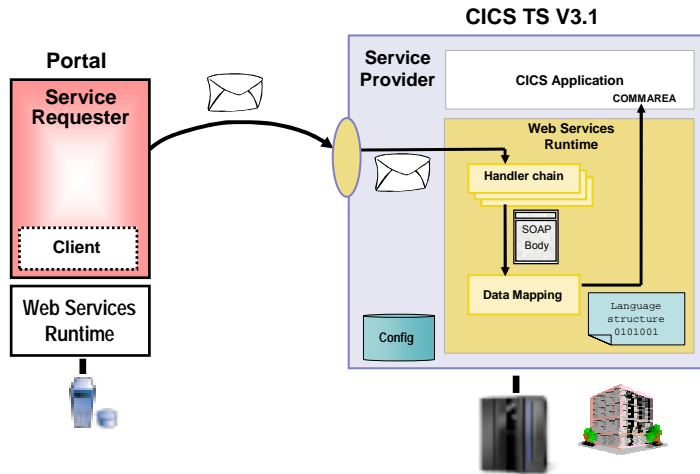
Web Services expose CICS and IMS investments for a new generation of re-use.

02 - SOA - The Foundation of your Next Gen Sol v2.0.ppt

13

How Did the CICS Web Service Work?

1. Receive SOAP request
2. CICS Web Services runtime handles the message
3. Handler chain processes SOAP headers
4. Data Mapping transforms XML into bytes, calls server app



02 - SOA - The Foundation of your Next Gen Sol v2.0.ppt

14

CICS Web Services

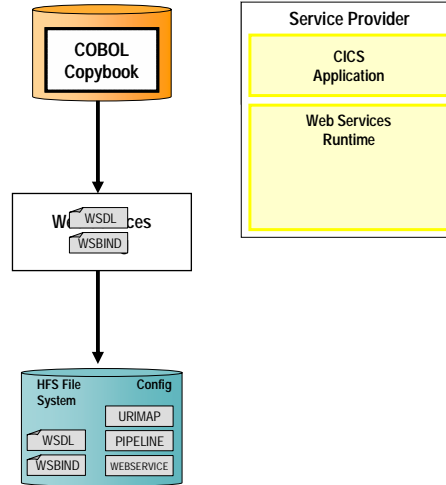
- Native Web Services capability offered by CICS
 - ▶ A CICS application can now be a web service provider and requester
 - ▶ Fully integrated into CICS
 - Resource definition using CICS admin screen, problem determination, monitoring & statistics
 - New tooling support for easier application development
 - ▶ SOAP requests can flow over HTTP or WebSphere MQ transports
- Rich set of Web services standards supported
 - ▶ SOAP 1.1 and 1.2 to send and receive web service messages
 - ▶ WS-I Basic Profile 1.0 for interoperability with between providers and requesters
 - ▶ WS-Coordination transaction coordination
 - ▶ WS-AtomicTransaction
 - ▶ WS-Security for authentication and encryption of messages

02 - SOA - The Foundation of your Next Gen Sol v2.0.ppt

15

Development Steps to Expose CICS Application as a Web Service Provider

1. Start with COBOL copybook
2. Generate WSDL from copybook
3. Copy files to host file system.
 1. Use standard CICS supplied PIPELINE definition
4. CICS automatically installs other related definitions
5. CICS application is now web service enabled

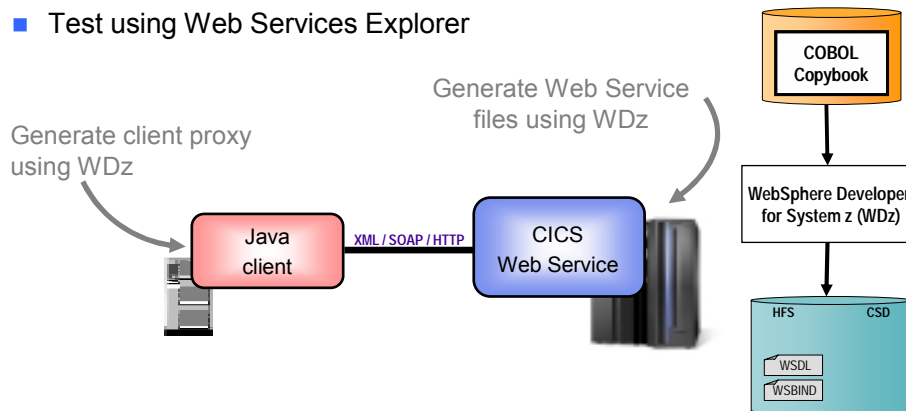


02 - SOA - The Foundation of your Next Gen Sol v2.0.ppt

16

DEMO: Use WebSphere Developer for System z to Expose CICS Program as Web Service

- Generate WSDL and WSBIND files
- Deploy files to host file system
- Test using Web Services Explorer



02 - SOA - The Foundation of your Next Gen Sol v2.0.ppt

17

Bank of Montreal: Reuse Existing Services

Challenge: Increase Efficiency and Customer Satisfaction



Delivering Business Value:

- Exposed CICS transactions as web services
- New front-end CRM application provided cross-sell and up-sell opportunities
- Revitalized customer relationship management across multiple banking channels

Through greater IT flexibility:

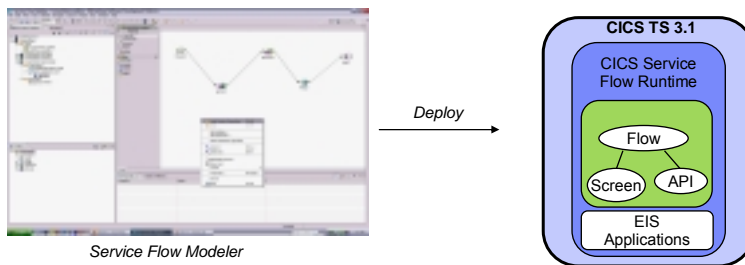
- Reused existing IT assets through service-enablement
- Modeled options for new system to support hundreds of transactions per second
- Built service-oriented applications more easily

How About a Sequence of CICS Screens? CICS Service Flow Feature

- Allows you to sequence fine-grained CICS program interactions into a higher level, coarse-grained unit.
 - ▶ This can then be exposed as a web service
- Consists of:
 - ▶ CICS Service Flow Runtime in CICS TS 3.1
 - Runtime in CICS executes a sequence of terminal or commarea based interactions
 - ▶ Service Flow Modeler in WebSphere Developer for z
 - Visually design flow
 - Tool can record flow as user navigates through BMS screens
 - Use Web Services wizards and test facilities in WDz

Service Flow Modeler

- Visual Designer in WDz
 - ▶ Wire CICS applications together into a reusable flow
 - ▶ Wire sequence of BMS screens into a reusable flow
- Expose flow as web service
 - ▶ Can be called from other larger business process flows
- CICS deployment
 - ▶ Deploy to Service Flow Runtime in CICS TS 3.1



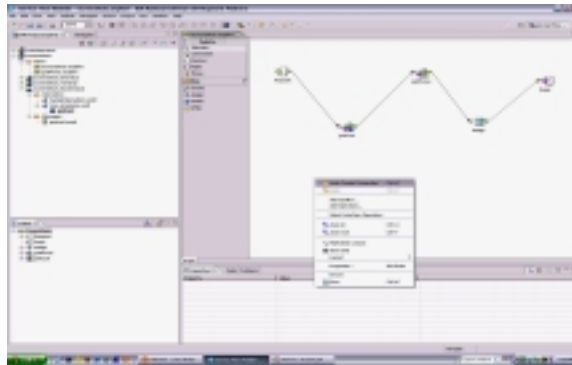
Service Flow Modeler

02 - SOA - The Foundation of your Next Gen Sol v2.0.ppt

21

DEMO: Service Flow Modeler

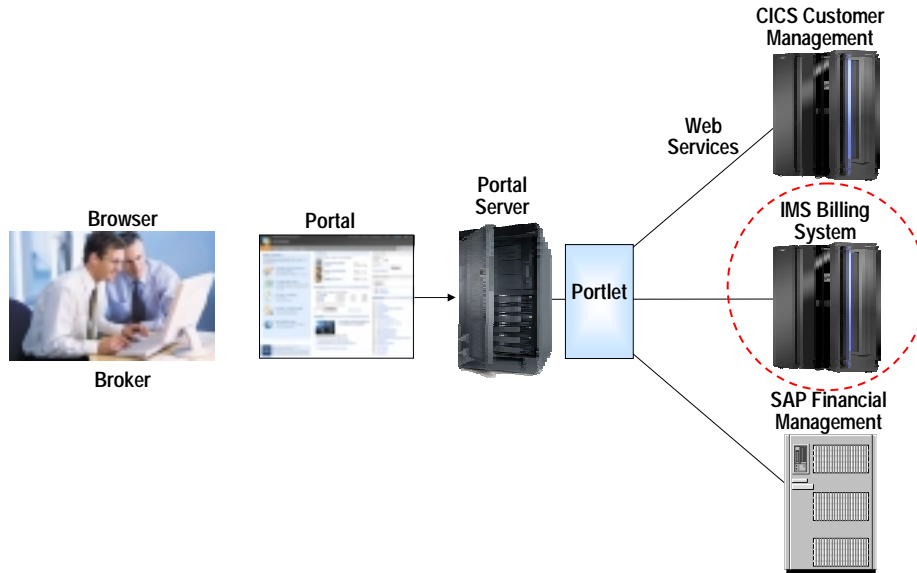
- Use Visual Designer in WDz
 - ▶ Record Screen interactions
 - ▶ Wire CICS programs together



02 - SOA - The Foundation of your Next Gen Sol v2.0.ppt

22

Service Oriented Finance Solution Picture



02 - SOA - The Foundation of your Next Gen Sol v2.0.ppt

24

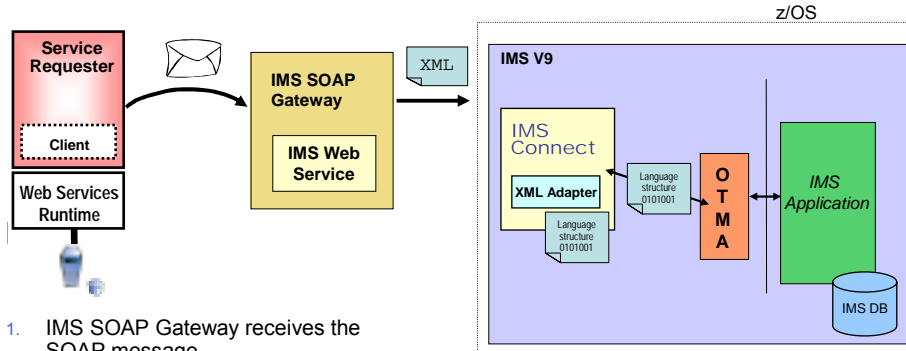
What About IMS Assets? Use the IMS SOAP Gateway

- Integrates IMS assets into SOA by providing a standard Web Services interface
 - ▶ Expose your IMS application as a web service with easy deployment and configuration
 - No programming needed
- Tooling support
 - ▶ IBM WebSphere Developer for System z generates Web Service artifacts like WSDL and XML converters
 - From COBOL copybook of IMS application
- Transforms XML data without changing IMS application
 - ▶ IMS Connect XML Adapter transforms XML data
 - No need to modify the IMS application code

02 - SOA - The Foundation of your Next Gen Sol v2.0.ppt

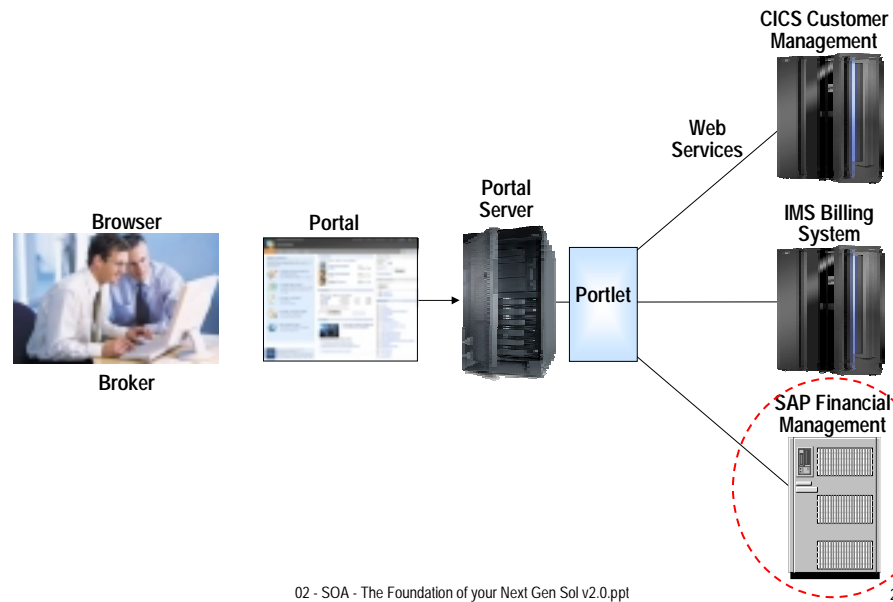
25

IMS SOAP Gateway – How It Works



1. IMS SOAP Gateway receives the SOAP message
2. Processes SOAP header, extracts XML payload, sends XML data to IMS Connect
3. IMS Connect invokes XML adapter to convert XML to bytes
4. Sends bytes to Open Transaction Manager Access (OTMA) server and the IMS application being invoked

Service Oriented Finance Solution Picture



What About Other Enterprise Assets without Native Web Services Capabilities?

How do we expose the functions of our other backend systems like SAP?



Service Oriented Finance
CIO

IBM provides a comprehensive set of adapters.



IBM

02 - SOA - The Foundation of your Next Gen Sol v2.0.ppt

28

What Do Adapters Provide?

- Provide a consistent framework for access to back-end systems and technologies
 - ▶ Translates an abstracted interface into target-specific protocols, APIs or data formats
 - ▶ Abstracted interface encapsulates business functions and events in the form of business objects
- Consistent configuration, deployment, and administration
- A standardized framework enables WebSphere development tools to generate code that would otherwise be manual with third party adapters

02 - SOA - The Foundation of your Next Gen Sol v2.0.ppt

29

IBM Adapter Portfolio

Adapter Category			
Application	<ul style="list-style-type: none"> • Ariba Buyer • Clarify CRM • eMatrix • i2 • JD Edwards OneWorld 	<ul style="list-style-type: none"> • MetaSolv Applications • Oracle Applications • PeopleSoft Enterprise * • Portal Infranet 	<ul style="list-style-type: none"> • SAP Exchange Infrastructure • SAP Software * • Siebel eBusiness Applications * • SunGard FRONT ARENA
Technology	<ul style="list-style-type: none"> • COM • CORBA • Complex Data • EDI • Enterprise Java Bean • DTS • E-mail • Exchange 	<ul style="list-style-type: none"> • Fix Protocol • Flat Files * • Lotus Domino • Healthcare Protocols • HTTP • i-Series • JDBC * • JMS 	<ul style="list-style-type: none"> • SWIFT • TCP/IP • Web Services • WebSphere MQ • WebSphere Message Broker • WebSphere MQ Workflow • XML

Adapter development kit available for developing custom adapters

Notes:

Adapters in **bold** can introspect target application/technology

* Both Java Connection Architecture (JCA) and Java Message Service (JMS) adapter versions provided

** Only available as a Java Connection Architecture (JCA) adapter

Business Problem Solved

We are getting hundreds of new customers through our external brokers



Service Oriented Finance
CEO

SOA allowed us to quickly unlock our core application assets for reuse



Service Oriented Finance
CIO

Service Oriented Finance's Technical Challenges

1. How can Brokers access our existing car loan application?
2. How do I optimize the existing process so we are ready to handle a large increase in the number of car loan requests?

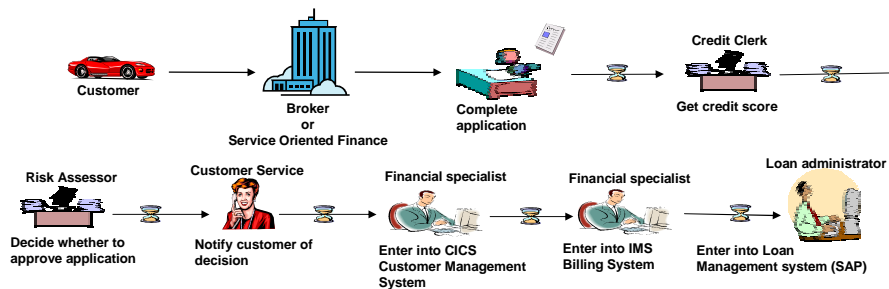


Service Oriented Finance
CIO

02 - SOA - The Foundation of your Next Gen Sol v2.0.ppt

32

Current Process for New Car Loans



Reasons current process isn't ready for increased amount of business:

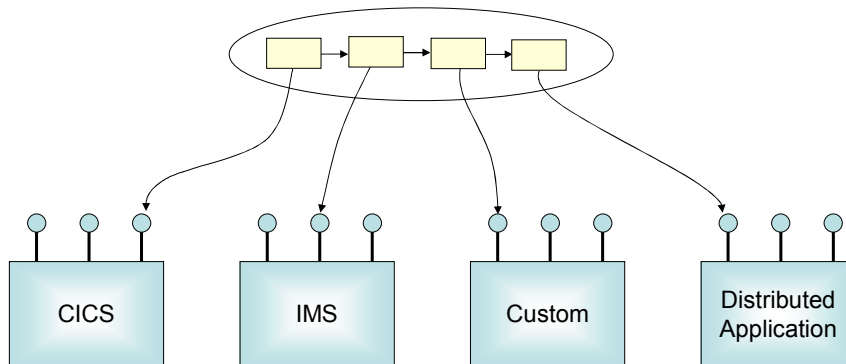
- Manual process won't scale
- Manual data entry results in errors
- Multiple manual steps makes it difficult to determine status of any particular loan request

02 - SOA - The Foundation of your Next Gen Sol v2.0.ppt

33

Next Step to SOA

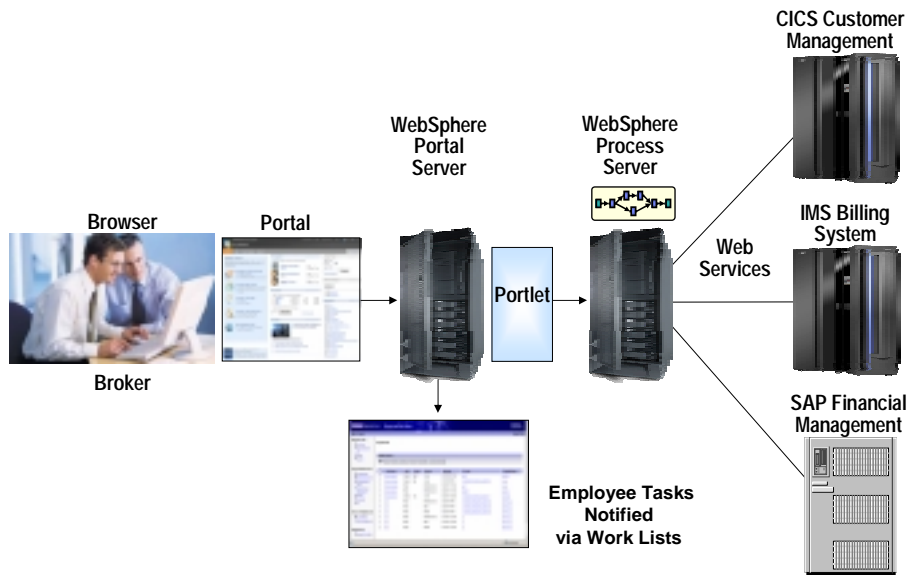
- Combine exposed services to innovate new cross-system business functions
- Use IBM Middleware to quickly implement next generation business process



02 - SOA - The Foundation of your Next Gen Sol v2.0.ppt

34

Service Oriented Finance Solution Picture



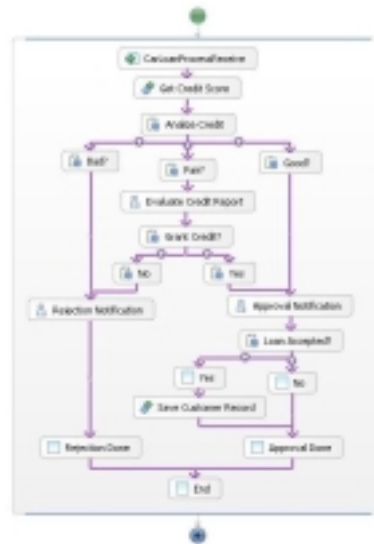
02 - SOA - The Foundation of your Next Gen Sol v2.0.ppt

35

Use WebSphere Integration Developer to Build the Process

- Graphically describe business process flow in Business Process Execution Language (BPEL)
- Drag and drop services into process flow (automatic binding)
- Automatic human workflow support
- Built-in Unit Test Environment
- Built-in Process Debugger
- Generate and deploy to runtime server
- Flow may be invoked as web service, EJB, or message driven bean

Process from Modeler (in BPEL)

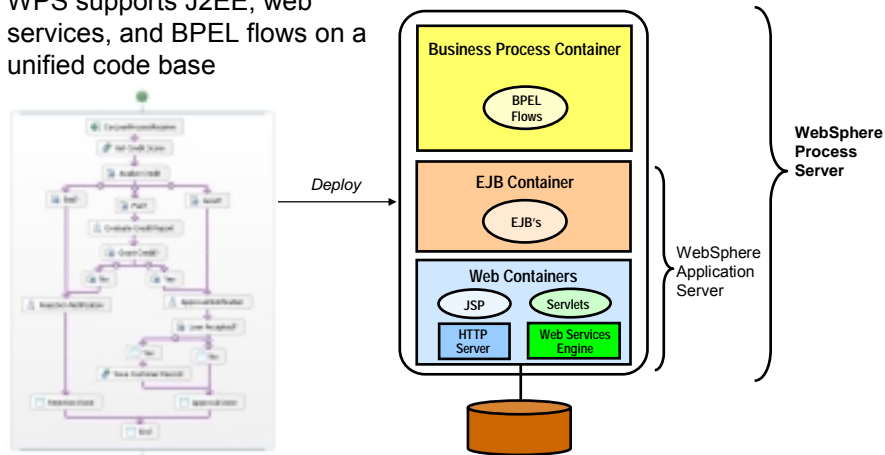


02 - SOA - The Foundation of your Next Gen Sol v2.0.ppt

40

The Completed Process Runs on WebSphere Process Server (WPS)

- The completed BPEL process can be deployed easily to WPS
- WPS supports J2EE, web services, and BPEL flows on a unified code base



02 - SOA - The Foundation of your Next Gen Sol v2.0.ppt

41

Run the Process on System z

What platform should I use to run my Next Generation processes?



Service Oriented Finance
CIO

System z is an ideal platform for your SOA infrastructure



IBM

02 - SOA - The Foundation of your Next Gen Sol v2.0.ppt

44

Why SOA on System z?

1. Qualities of Service

- An effective SOA implementation requires very high Quality of Services (QoS) from the underlying environment
 - ▶ Continuous Availability/Disaster Recovery
 - ▶ Scalability and Clustering
 - ▶ Rock solid Security
 - ▶ Workload Management to handle peak demand
- *These are fundamental characteristics of System z, making it an ideal platform to deploy an SOA solution*
- IBM's core SOA framework runs on z/OS
 - ▶ WebSphere Application Server
 - ▶ WebSphere Process Server
 - ▶ WebSphere Portal Server
 - ▶ WebSphere Enterprise Service Bus

02 - SOA - The Foundation of your Next Gen Sol v2.0.ppt

45

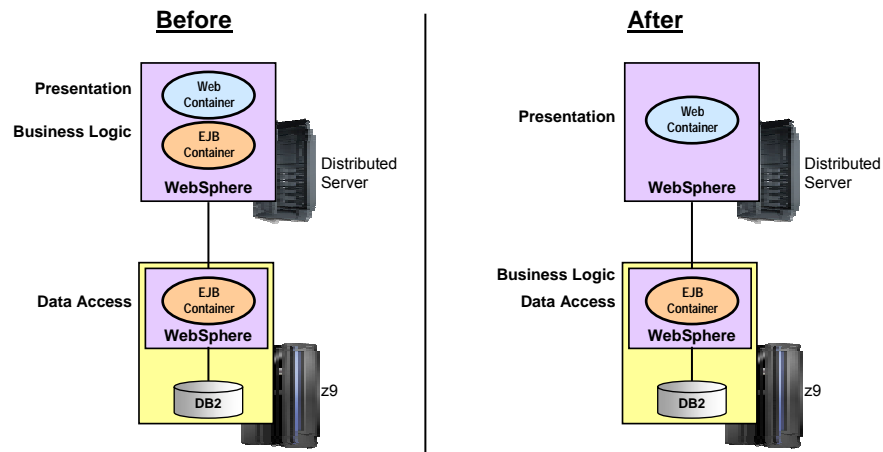
Why SOA on System z? 2. Co-location

- Typically the mainframe already houses the core applications and data that provide a competitive advantage to the business
 - ▶ Quickly expose them as services, and continue the QoS the business depends on
- Having the Process Server and Enterprise Service Bus in close proximity to the assets they access provides better performance and throughput
- HiperSockets technology means less network overhead
 - ▶ Memory to memory communication

02 - SOA - The Foundation of your Next Gen Sol v2.0.ppt

46

Proximity to Data Large Transportation Company Benchmark

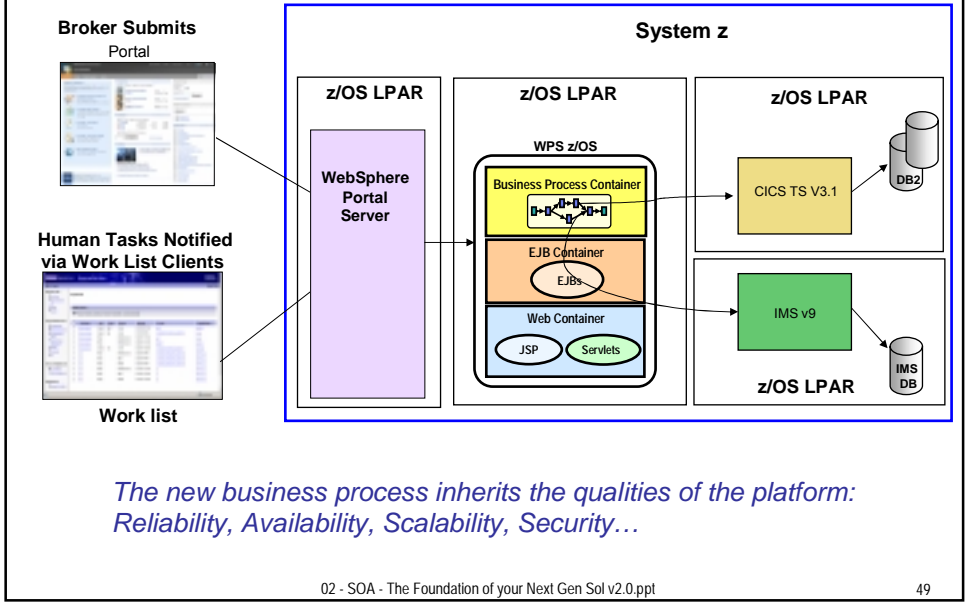


- **Advantages of refactoring business logic to be co-resident with z/OS data**
 - ▶ Average CPU time per EJB transaction was reduced by over 77%
 - ▶ Number of bytes of data transferred per EJB transaction was reduced by 99%

02 - SOA - The Foundation of your Next Gen Sol v2.0.ppt

47

Service Oriented Finance Runs its Next Generation SOA Solutions on System z



Summary

Unlock the value of your System z assets using a Service Oriented Architecture.

System z is an ideal platform for implementing Next Generation SOA Solutions.



IBM

