



# Be ready for tomorrow: Discover the ideal platform for modern applications

*The future runs on System z*

**Yvonne Perkins**

**Vice President**

**Enterprise Platform SW / SWG**



# Disclaimer

*Information regarding potential future products is intended to outline our general product direction and it should not be relied on in making a purchasing decision. The information mentioned regarding potential future products is not a commitment, promise, or legal obligation to deliver any material, code or functionality. Information about potential future products may not be incorporated into any contract. The development, release, and timing of any future features or functionality described for our products remains at our sole discretion.*

We are living in a new landscape

# Smarter Planet

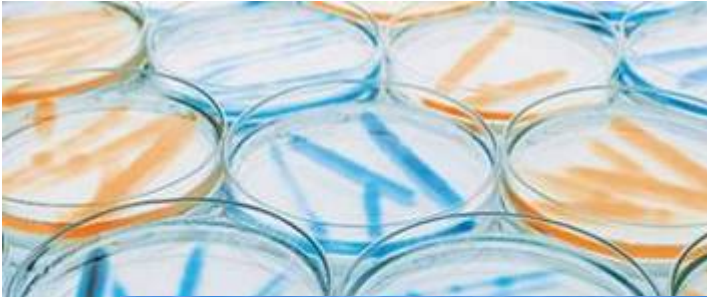
---

instrumented  
interconnected  
intelligent

people  
companies, institutions, industries  
man-made systems  
nature's systems



# The need for change is clear – We must work Smarter



The U.S. healthcare system loses more than \$100 billion a year to fraud.

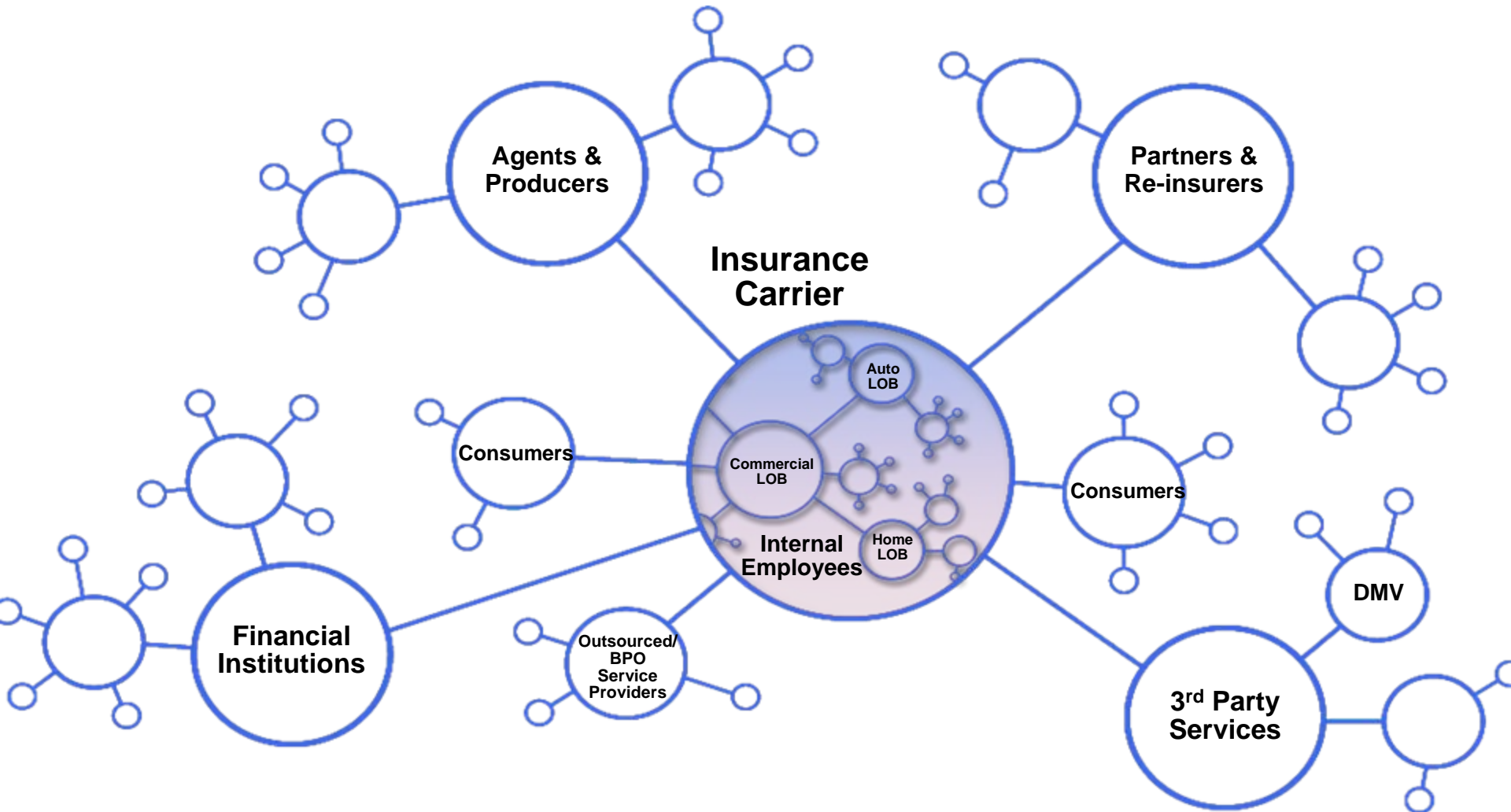


\$11.5B worth of produce is wasted in India because of outdated post-harvest infrastructure



In North America, up to 22 percent of total port volume is empty containers.

There's a need to look closely at our Business Networks ....



...which are becoming broader...and much more dynamic

# Achieving a dynamic business network presents challenges

3%

of companies report they have achieved **“process excellence”**

68%

of executives report that **integration challenges** impede collaborative relationships with partners

85%

of CEOs require **more visibility** into their businesses

*Businesses are restrained by organizational silos*

## ...and tremendous opportunities

A large bank  
reduced redundant  
process activities by

60%

An air freight company  
reduced partner  
integration time by

50%

A retailer gained real-time  
inventory visibility across  
500+ outlets and reduced  
data integration costs by

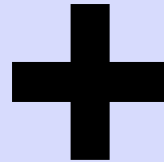
20%

***Break down silos to increase business agility  
and embrace the dynamic network***

# To Survive... To Thrive... To Succeed

## **Business Agility**

to take advantage of new revenue opportunities and address competitive threats

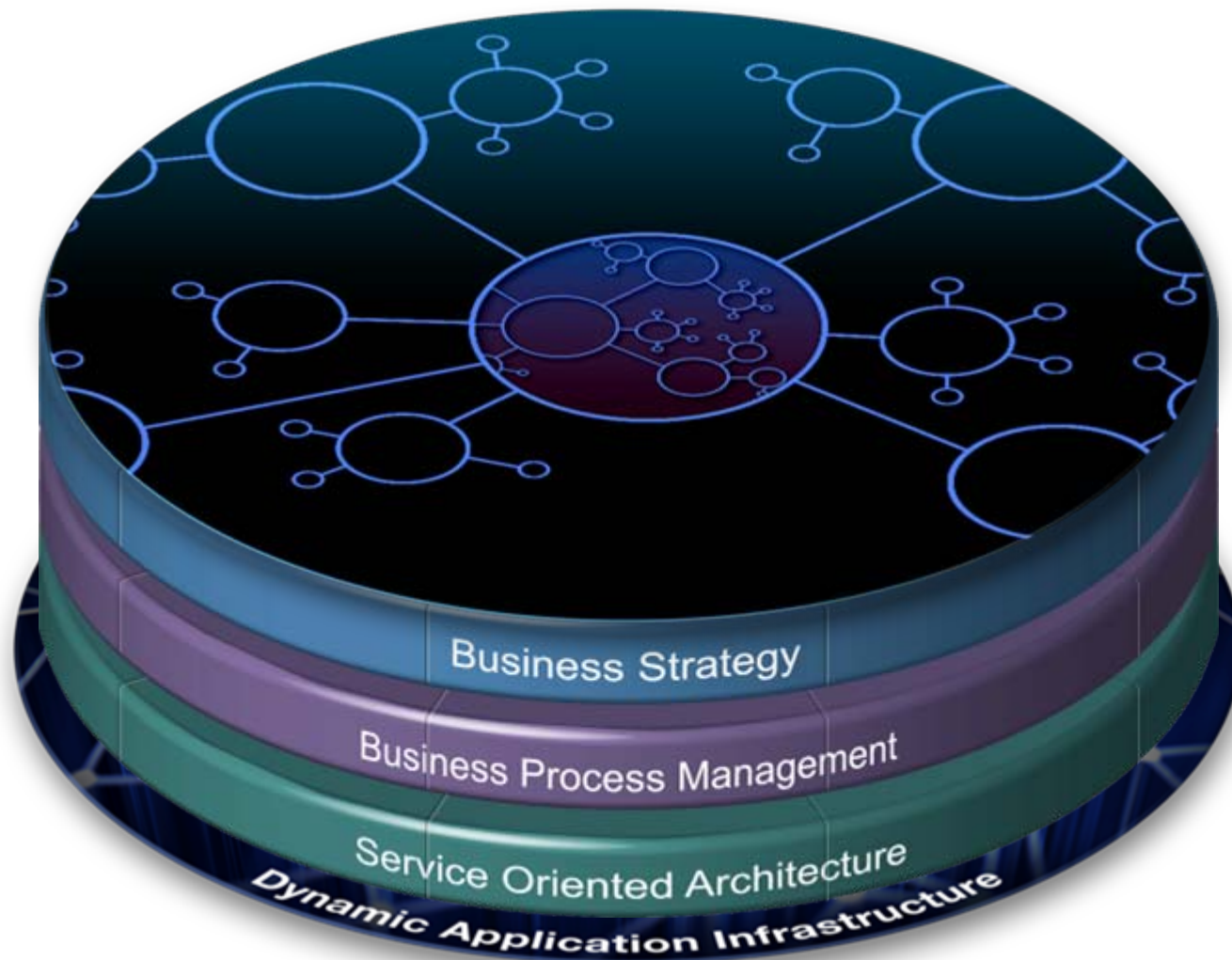


## **Cost Optimization**

to slash operational and maintenance expense and maximize efficiency necessary for all economic climates



A dynamic network requires business agility...



...supported by a Dynamic Application Infrastructure

# Three ways to drive Agility while Optimizing Costs

“Ensure applications consistently deliver on business needs in all situations”



**Dynamic  
Application  
Infrastructure**

“Adapt & respond to dynamic business situations”



**Connectivity  
&  
Collaboration**

“Quickly respond to changing customer expectations and business demands”



**Business Process  
Management**

# The power of a Dynamic Application Infrastructure



## Modernize Applications



Expand client offerings using existing business data with Web 2.0

## Execute High Volume Transactions



Reduce business risks with highly available, secure applications

## Capitalize on dynamic situations



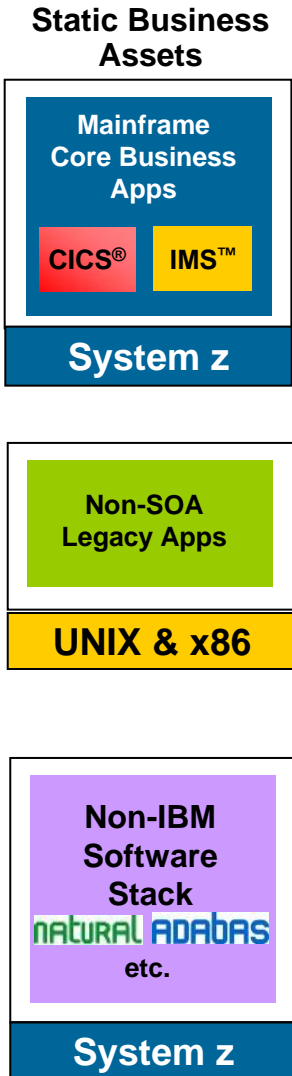
Timely insight with low cost situational applications

## Manage worldwide operations



Rapidly introduce new capabilities throughout the business with centralized administration

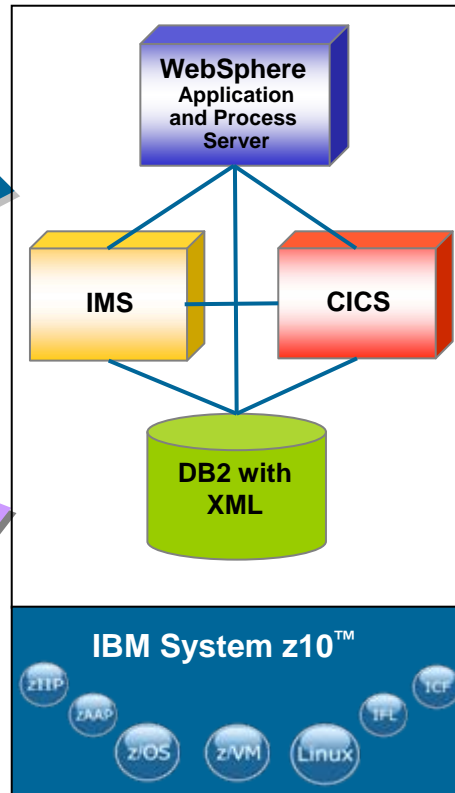
# Modernizing the Enterprise Through SMART SOA



**Modernize** →

**Transform** →

## SMART SOA Foundation

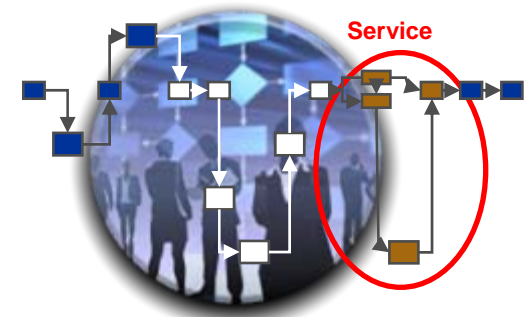


**Extend** →

## Optimized Assets, Skills, and Infrastructure



- Optimize cost
- Increase flexibility
- Boost productivity
- Maximize business agility





# The Right Platform for Any Situation

## SOA Enabled Agile Integrated Application Environment

Modernize and transform your environment

**IBM WebSphere  
Application Server  
for z/OS**

Practical reuse of  
on-line Java assets  
in Batch

**IBM CICS Transaction  
Server**

Understanding,  
Optimization  
and Control



**IBM WebSphere  
Compute Grid for z/OS**

**IBM CICS Tools**

**IBM Problem Determination  
Tools for z/OS**

# HUK-COBURG



## Industry Pains

- Need to access more functionality and spread out its data processing load
- Reduce CPU usage to cut operating costs

## Smarter Business Outcomes:

- Reduces CPU usage for CICS technology by 400 million instructions per second (MIPS), for savings of \$320,000
- Cuts CPU usage in the internal coupling facility by 40%
- Achieve CPU savings through threadsafe functionality

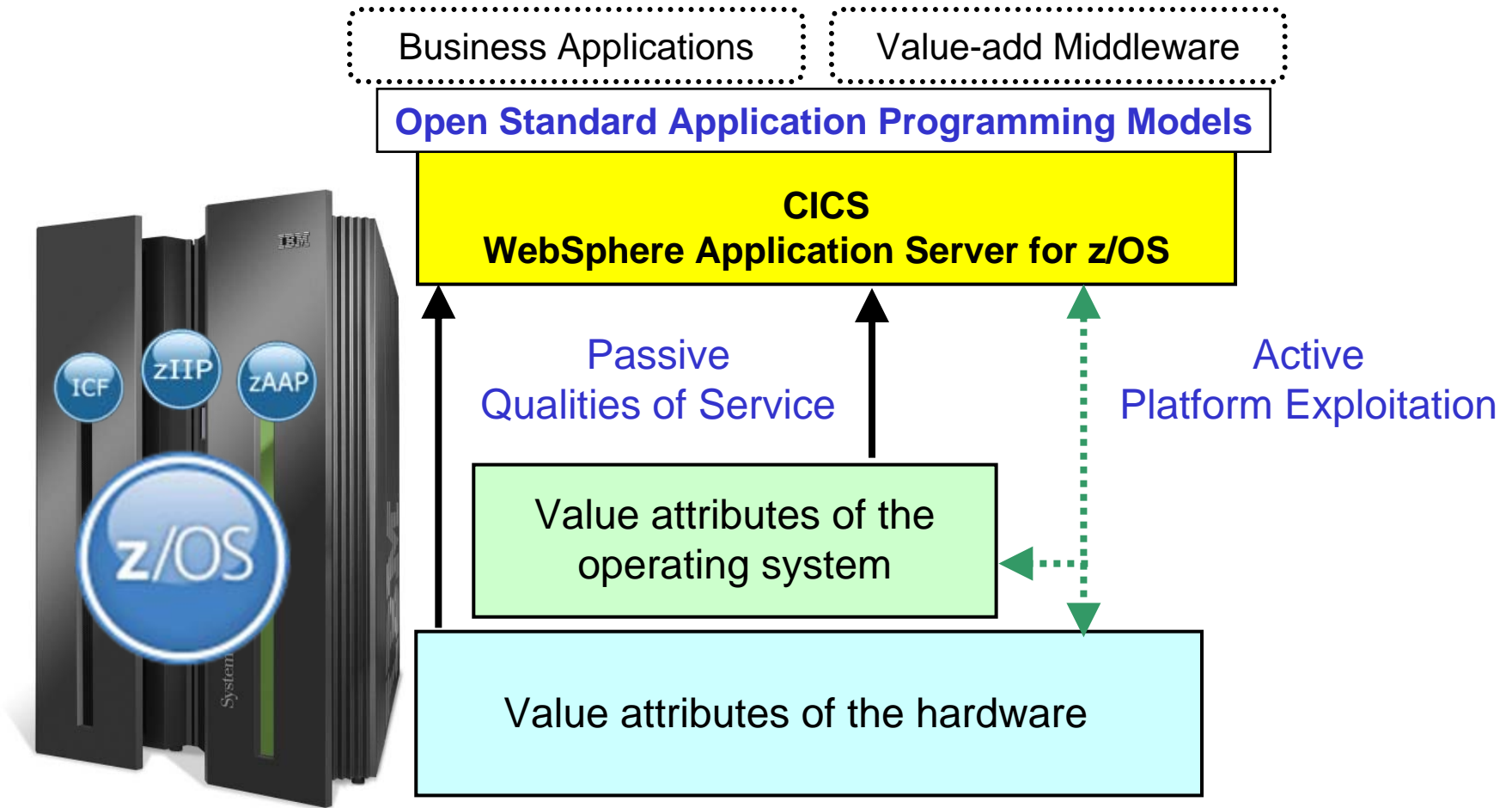


## Why Dynamic Application Infrastructure?

Deliver on business objectives and reduce operating costs



# Combining Industry Leading Runtimes and z/OS Delivers Superior Customer Value



# Achieving Maximum Performance Through Currency



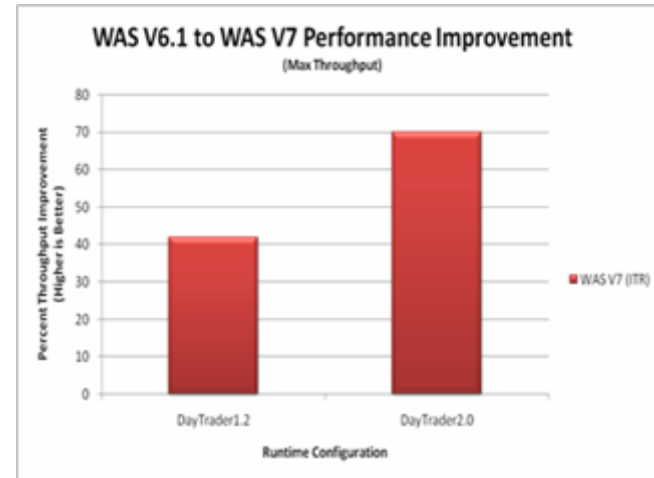
## Runtimes

- *WAS V7 vs V6.1 up to:*
  - 42% faster for legacy apps
  - 47% faster for Web Services
  - 70% faster for Java EE apps



## Compilers

- *z/OS XL C/C++ v1.11*
  - Improved a customer application ~20%
  - Enhanced system programming capabilities
  - Supporting latest Middleware and tools



## Hardware

- Generation to generation price / performance gains
- Unique value of specialty engines
- Ability to reduce energy costs by up to 80%



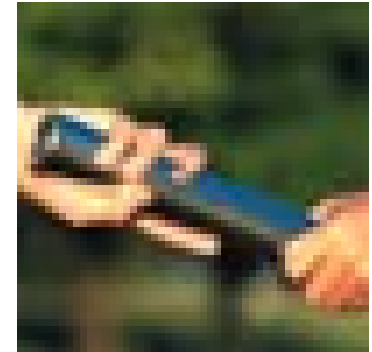


# When location matters, why not z/OS?

## Performance Optimization through collocation



- Support for a broad range of Application/Data placement
  - Network connection across heterogeneous environments
  - Sysplex connection across z/OS images
  - Cross memory connection within a z/OS image
- When Application and Data are in the same z/OS
  - Up to 34% overall CPU savings
  - 52% more throughput
  - DB2 z/OS: JDBC Local (Type 2) now yields 28%-38% better results
  - CICS Transaction Gateway (CTG) Local is 18% more efficient
  - 3-year TCO are price neutral



More information

WPS z/OS performance report: [in the performance library](#)

WebSphere z/OS co-location paper: [in the techdocs library](#)



# Revolutionize the economics of development

## Rational Software Delivery Platform

RAA, HATS  
EGL



Revitalize  
Applications

Rational  
Developer for z



Empower  
People

Rational  
Team Concert  
for System z



Unify  
Teams

Compilers



Optimize  
Infrastructure

- **Increase flexibility**

- **Boost productivity**

- **Maximize Business agility**

- **Defer capital expense**



# UniCredit

*Improves developer productivity and testing efficiency for mainframe development*

## The challenge

- Modernize its development platform for core financial business software
- Development and testing efficiency for new and existing applications
- Make COBOL development more attractive to younger programmers

## Business value

- Similar development environment for COBOL and Web applications — attractive to younger developers
- Estimated 15% increase in development and 10% increase in testing productivity

## Solution

- More than 200 developers began using IBM Rational Developer for System z software to develop applications for IBM System z servers with IBM DB2 and IBM Information Management Systems software

# Think Rational

One of many ways Rational enables a smarter planet.



- One of Europe's largest financial services organizations
- 9,000 branch locations
- 40 million customers
- Employing over 170,000 people

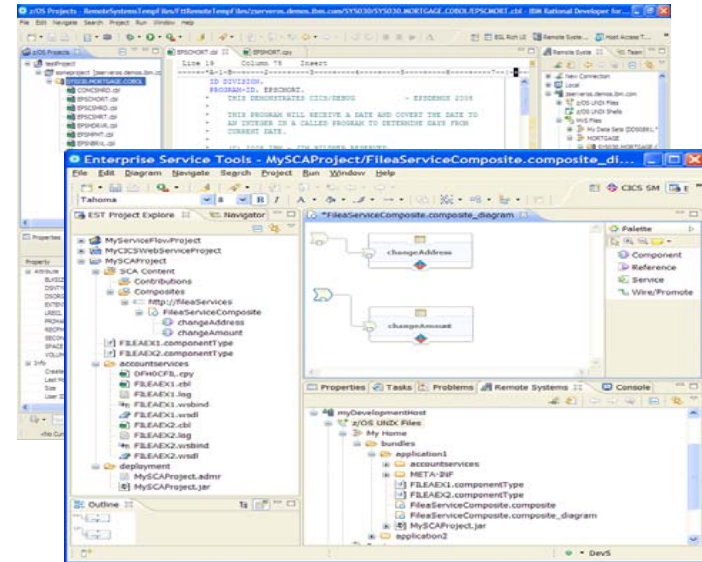
***“Our team now develops, debugs and tests with more confidence, and it is clear that more and more people here will be using Rational Developer for System z.”***

**Almut Geiger, Product Specialist, HVB**



# Maximize the value of your people

## *Leverage existing domain knowledge and new talent*



## Modern Integrated Development Environments

### Eclipse-based for all platforms and languages

- ~15% improvement in develop productivity<sup>1</sup>
- 50% - 80%<sup>1</sup> reduction in host CPU consumption
- Attract new talent

<sup>1</sup> Aggregation of results from a productivity study conducted by IBM System z customers



# User interface modernization

Deploy the ideal UI for your application,

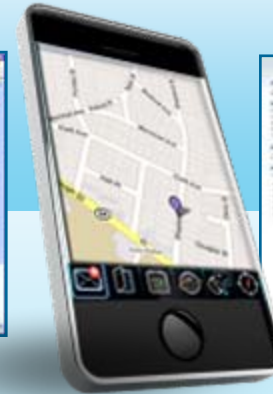
- Create a modern Web UI from an existing green screen
- Customize a highly interactive, graphical Web 2.0 UI

```
Session A - [1 x 80]
File Edit View Communication Actions Window Help
Client Inquiry - calls LAB3POT (LAB3BMS)

Customer number: 004
Last name: Silva
First: Lula da
Address: Palacio do Planalto
City: Brasilia
State: DF
Country: BRAZI

Type customer Number Between 1 and 10 or 99 to END

Customer retrieved sucessfully
```



Deliver greater customer satisfaction

- Lower training costs
- Fewer user errors



# CICS Explorer – The New Face of CICS Transaction Server

## Reduce the need for multiple interfaces

Before...

Web



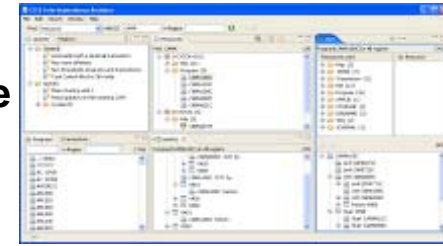
ISPF



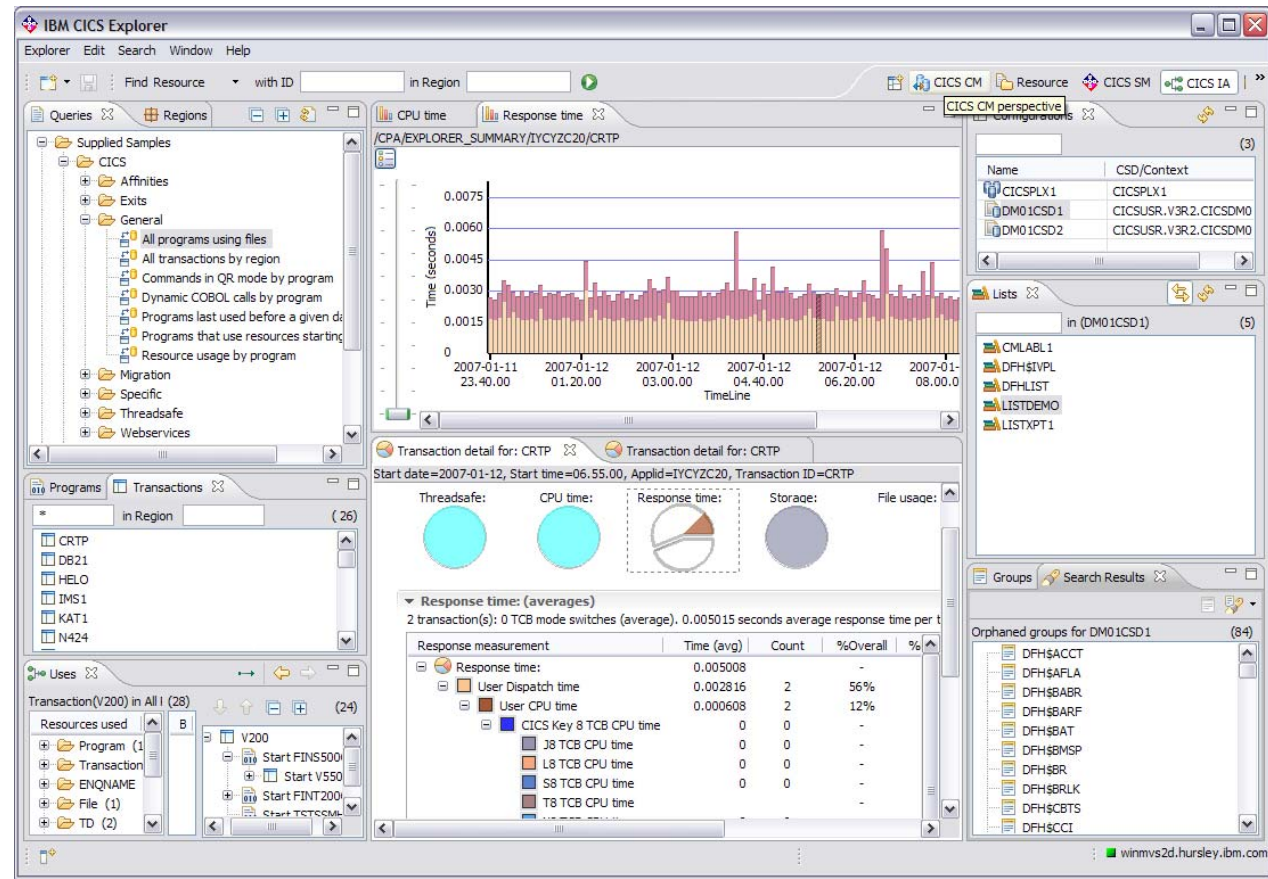
CICS 3270



Eclipse



Now ...



More info and downloads at [ibm.com/cics/explorer](http://ibm.com/cics/explorer)



# Reuse Business Applications

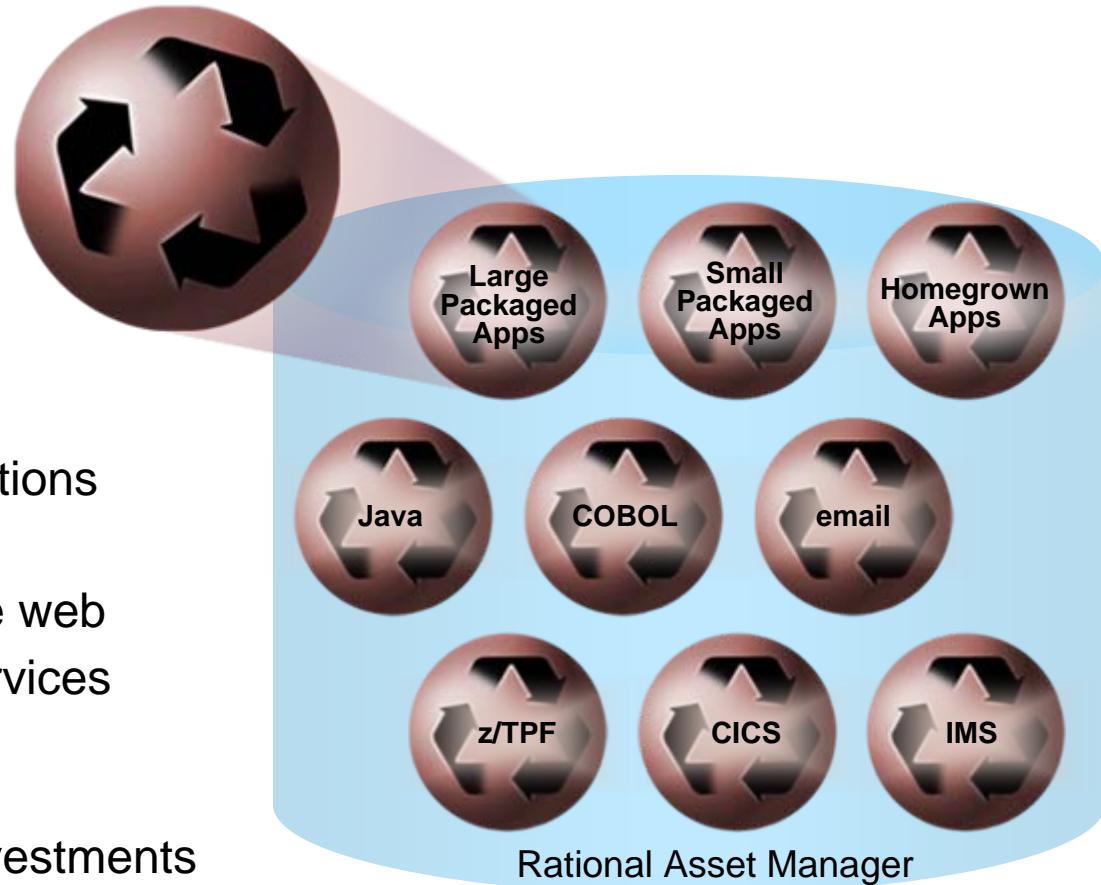
*Enable Agility Required for Smart Business Outcomes*

## Get More Value from Applications & Expand Business Opportunities

- Create a proactive asset management culture
- Deploy a reuse infrastructure
- Service-enable existing applications
- Create new, reusable services
- Extend reusable services to the web
- Consume external reusable services

## Benefits

- Extend ROI by reusing prior investments
- Reduce risk and costs by leveraging robust applications
- Speed time to market with faster development cycles



# Three ways to drive Agility while Optimizing Costs

“Ensure applications consistently deliver on business needs in all situations”



Dynamic  
Application  
Infrastructure

“Adapt & respond to dynamic business situations”



**Connectivity  
&  
Collaboration**

“Quickly respond to changing customer expectations and business demands”



Business Process  
Management





# An edge in the market – SOA Connectivity & Integration

**Confirmed  
Flight  
Booking**



Lower process disruptions with reliable data movement

**Central Airport  
Checkpoint**



Create new revenue-generating services from current core business applications

**Routing Bank  
Transactions**



Adapt business faster by easily connecting services & apps

**Centralized  
Information  
Source**



Reduce cost & duplication by leveraging existing assets



# Ball State University



## Industry Pains

- The need to streamline administrative systems and ensure integrity

## Smarter Business Outcomes:

- SOA with Enterprise Service Bus to connect siloed applications without hand-coding individual API calls
- Resolve name and address discrepancies in 10 months, as opposed to several years



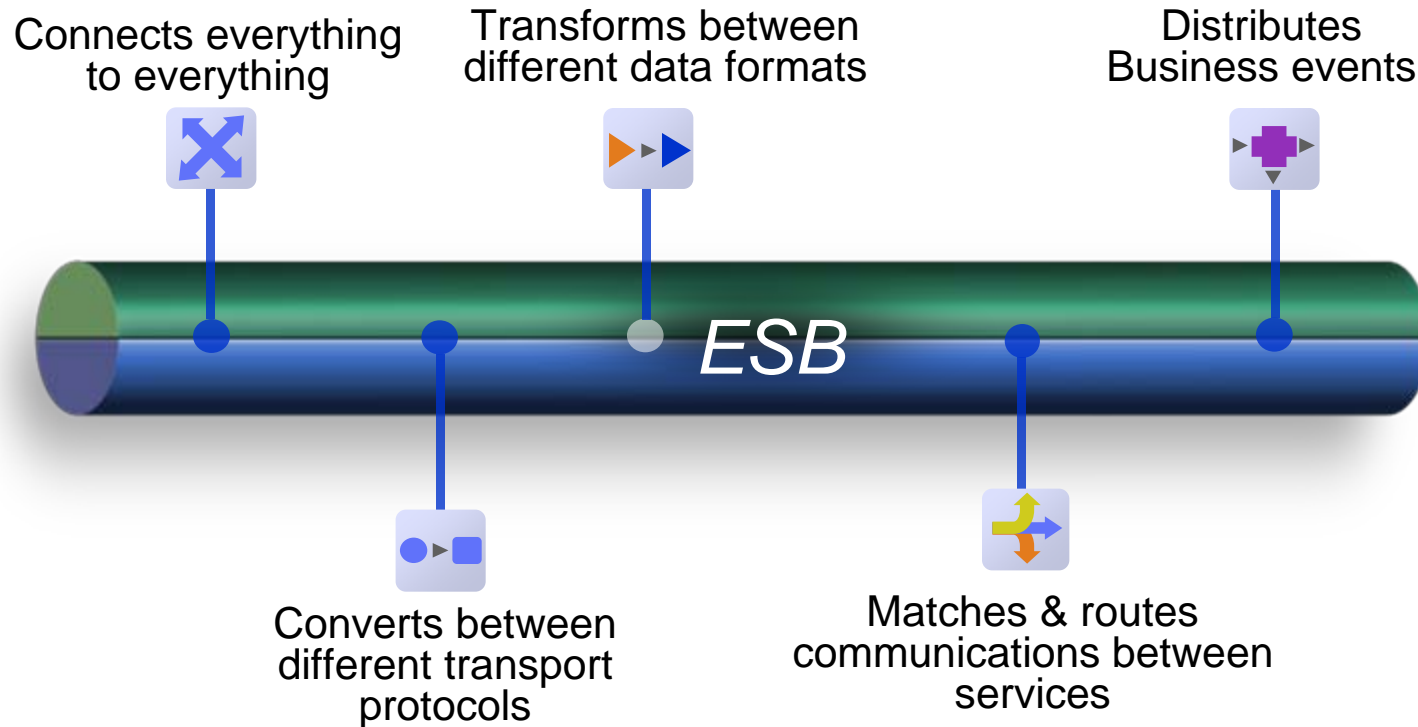
## Why SOA Connectivity & Integration?

Communication between decoupled back and front ends, choosing the destination for a message, and transforming it into the correct format



# Agility and savings begin with Integration

## *The Enterprise Service Bus (ESB)*



**Optimize Costs by:** *Integrating new customers and partners up to 80% faster, Improving performance more than 10x - with lower costs, and Achieving full ROI within as few as 6 months*

IBM WebSphere  
Message Broker for z/OS

IBM WebSphere  
Enterprise Service Bus

IBM WebSphere  
MQ for z/OS

# Execute efficiently through global collaboration & agility

Reduce costs, improve governance, and assess risk as a unified team

- Unify globally diverse teams of all sizes
  - Support developers, stakeholders and partners on multiple projects
  - Deliver enhanced scalability, security, availability and performance
- Enable teams to adapt rapidly
  - Provide enhanced agile planning and schedule risk assessment
- Integrate existing tool and infrastructure investments
  - Consolidate and reduce costs
  - Support a diversity of programming models, platforms and tooling





# Sodifrance SA, an IT services company

*Boosts development team productivity, minimizes errors and rework*

## The challenge

- For Sodifrance's many complex mainframe modernization projects, the company's staff often required disparate tools for each phase, including requirements, change management, agile development process management, builds which increased their development costs and time

## Business value


- Decreases development time by 15-20%
- Improves development quality and minimizes errors and rework

## Solution

- Sodifrance selected IBM Rational Team Concert for System z and Rational Developer for System z software on an IBM System z9 Enterprise Class server running IBM z/OS® 1.10 at IBM's Montpellier zTech center

# Think Rational

One of many ways Rational enables a smarter planet.



- Sodifrance SA is an IT services company
- Provides IT modernization services principally in France and Benelux

***“Building an agile development team requires a multiplatform approach. Rational on System z offers a powerful and valuable combination for any company that wants to boost its development team’s productivity.”***

**Hugh Smith, Project Manager, Sodifrance**



# Service Visibility & Governance



- **Trust:** Publish & find Your Services to extend business applications
- **Manage** & govern your ESB messaging & services
- **Secure:** Ensure consistent policy enforcement

IBM WebSphere MQ File Transfer Edition for z/OS

IBM WebSphere Service Registry & Repository for z/OS

# Three ways to drive Agility while Optimizing Costs

“Ensure applications consistently deliver on business needs in all situations”



Dynamic  
Application  
Infrastructure

“Adapt & respond to dynamic business situations”



Connectivity  
&  
Collaboration

“Quickly respond to changing customer expectations and business demands”



**Business Process  
Management**

# The power of Business Process Management



## Supply Chain Management



Automatically adjust forecasts and shipments to increase accuracy and reduce costs

## Retail Inventory



Detect and respond to inventory changes in real-time to meet customer demands

## Telecom Services



Quickly deliver more compelling and profitable service bundles to increase customer retention

## Insurance Claims Processing



Improve productivity and customer satisfaction by automatically routing claims to the right knowledge worker





# “European Bank”

## European Bank

### Industry Pains

- The market for home loans has been transformed by a new breed of independent mortgage brokers who now account for 40 percent of the market
- To respond to this marketplace change they needed a channel to reach these brokers

### Smarter Business Outcomes:

- Mortgage application processed in just hours compared with 2-3 days taken by competitors; independent mortgage broker channel now accounts for substantial portion of their business after only 6 months, far exceeding expectations; new channel added without significantly increasing staff levels



## Why Dynamic Business Processes?

WebSphere Process Server improved the reuse and efficiency of service components to reach the independent mortgage broker market

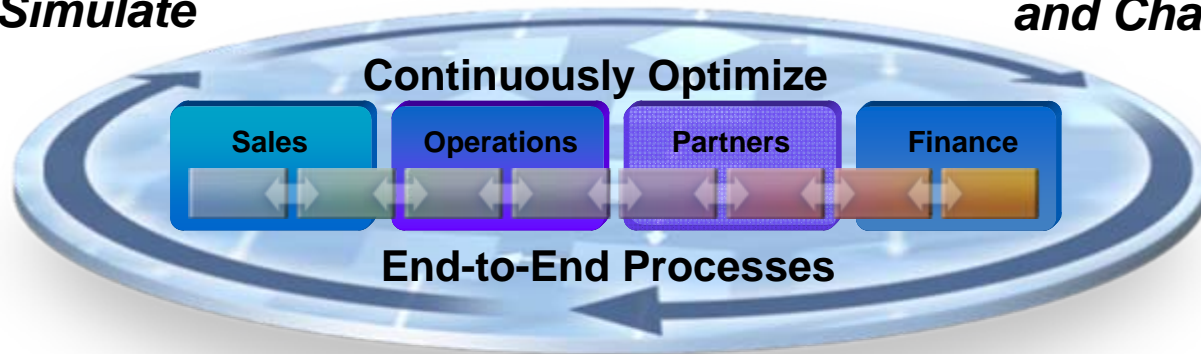


# Process Automation

*Improves operating efficiency and reduce costs*

**Model and Simulate**

**Rapidly Deploy and Change**



**Monitor, Predict and Act**



Streamline business activities

Lower Costs

Complement and extend existing applications

Reduce cycle time

Leverages reusable process components

Easier to Manage

**IBM WebSphere Process Server for z/OS**

**IBM WebSphere Business Monitor**

**IBM WebSphere Business Modeler**



# Insight contained in business events all around us

## What is a Business Event?

An action that has occurred, or the absence of it occurring, which has relevance to the business

Nearly **4 Trillion** RFID events are emitted each day



Large companies can experience up to **800 Billion** business events (shipments, weather, customer contacts, delays) daily



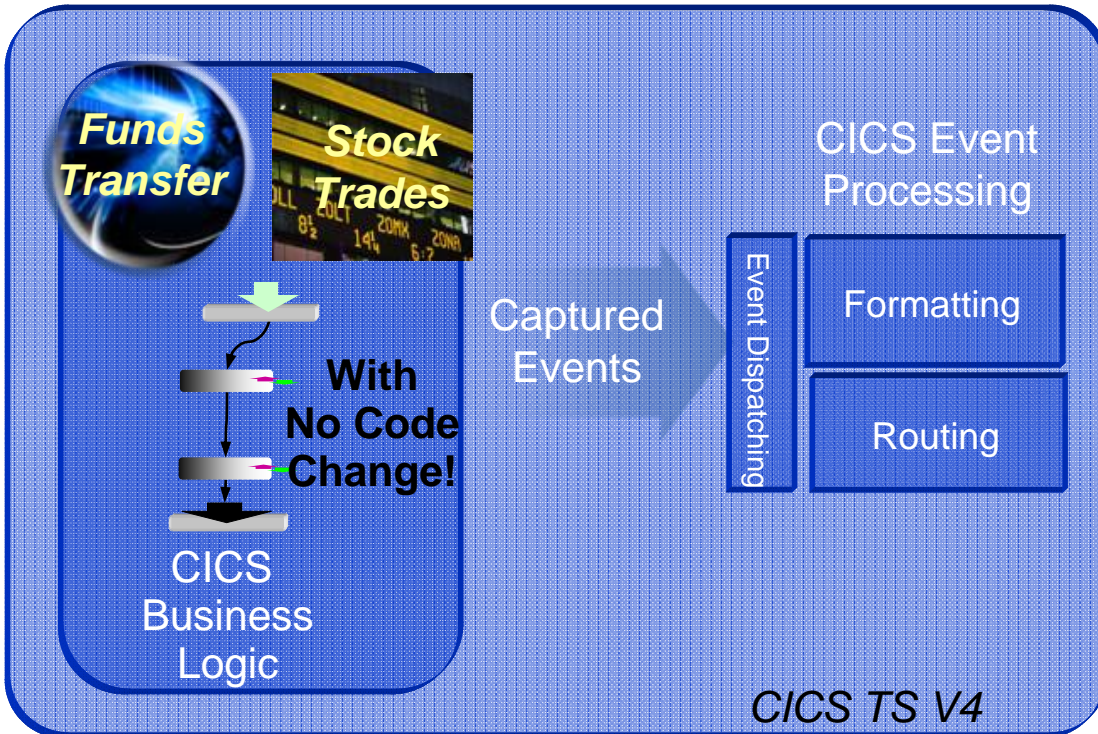
Over **190 Billion** emails are sent daily



# Capture mainframe events for smarter business outcomes



## CICS Event Sources



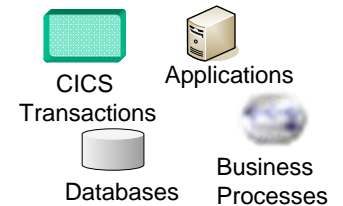
## Detect fraud and take action



WebSphere Business Monitor



WebSphere Business Events

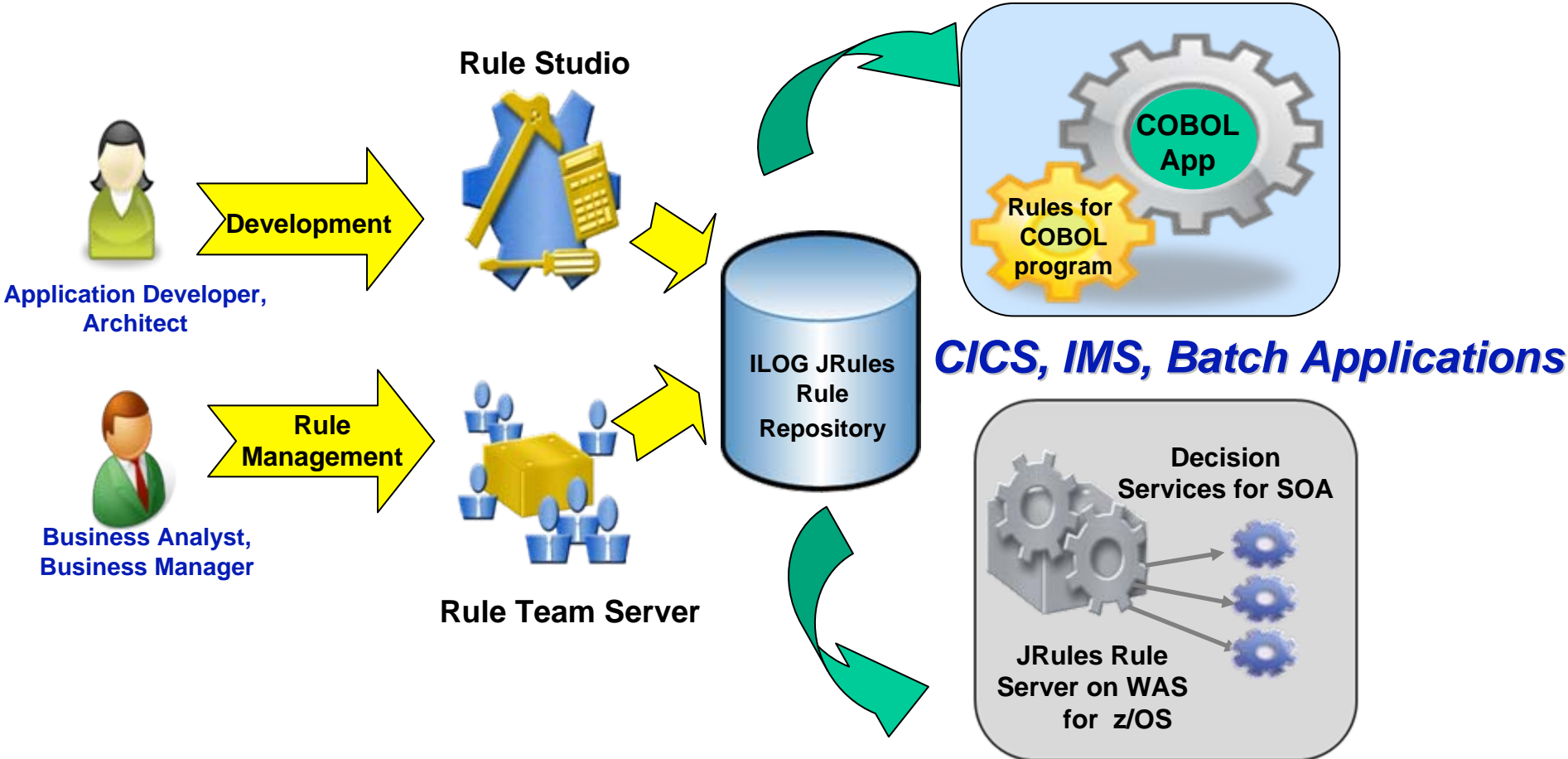


Other Event Consumers



# ILOG Business Rule Management Solutions on System z

## Option 1: ILOG Rules for COBOL



## Option 2: JRules Rule Execution Server on z/OS or Linux on System z

## Benefits of a Dynamic Business Network on System z

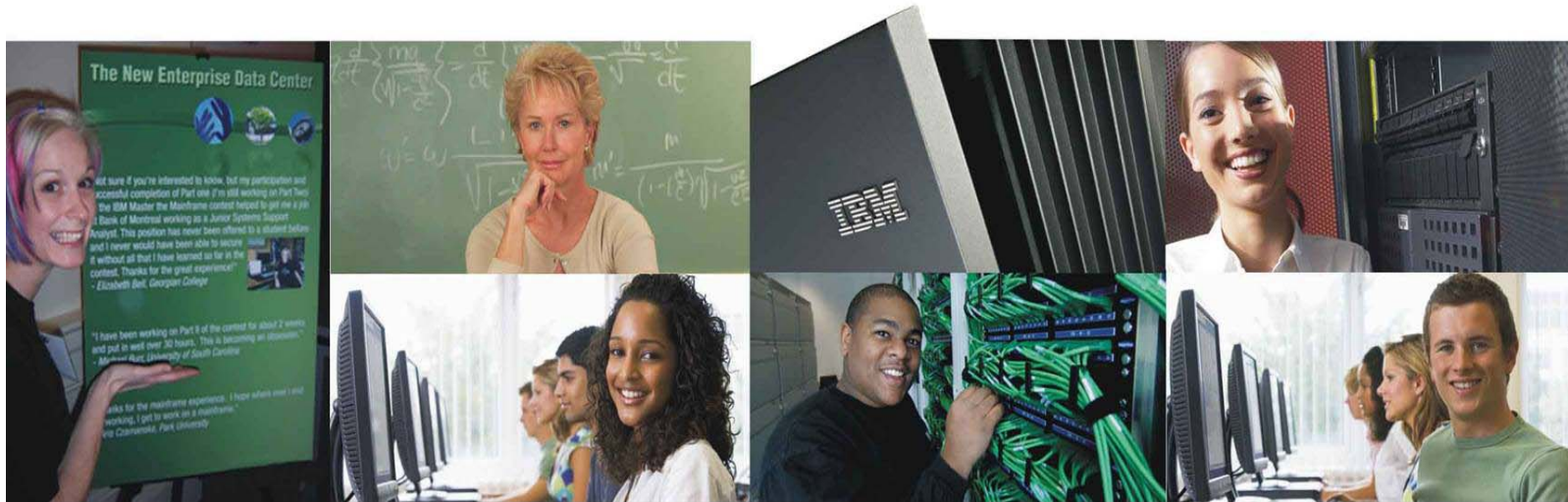
- Integration with Existing Assets
- High performance
- Server consolidation
- Dynamic scalability
- 99.999% Availability
- Exploitation of Java/J2EE
- Uninterrupted support
- Low TCO of applications
- Performance Optimization through collocation



# Enterprise training programs

*Maintaining the necessary skills within the IT workforce*

*Hire skilled employees from universities in the IBM Academic Initiative, and leverage IBM on-line resources to train existing staff*



## Delivering

*New talent with enterprise skills, convenient training for existing employees, and a growing community of skilled business partners, customers, students and IBM employees*

## Events not to miss

IBM Software

# Impact2010

The Premier Conference for Business and IT Leaders

**Discover. Interact. Optimize.**

**MAY 2-7** Las Vegas, NV

Register now at: [www.ibm.com/software/websphere/events/impact/](http://www.ibm.com/software/websphere/events/impact/)

The premier software and product delivery event.

**June 6-10** Orlando, Florida

# Innovate2010

The Rational Software Conference

Let's **build** a smarter planet.

Register now at: <http://www-01.ibm.com/software/rational/innovate/>





Be ready for tomorrow:  
Let's Build a  
Smarter Planet  
on System z

