

IBM Software

Impact2010

The Premier Conference for Business and IT Leaders



Evolution of Cloud Services and Integrating Cloud into your SOA

If you have any question, please contact Vietnamese team:

Hanoi:

Duong Cong Minh, minhdc@vn.ibm.com

Hochiminh:

Ngo Thanh Hien, hienggo@vn.ibm.com

Agenda

- Cloud Computing Level Set
- Value of Application-aware Cloud Computing
- Required Capabilities
- Getting Started Today



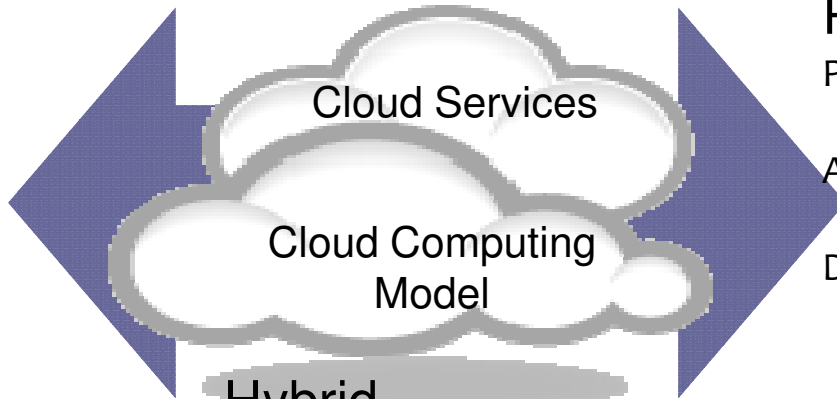
Cloud Computing Delivery Models

Flexible Delivery Models

Public ...

Service provider owned and managed.
 Access by subscription.
 Delivers select set of standardized business process, application and/or infrastructure services on a flexible price per use basis.

.... Standardization, capital preservation, flexibility and time to deploy



Private ...

Privately owned and managed.
 Access limited to client and its partner network.
 Drives efficiency, standardization and best practices while retaining greater customization and control

.... Customization, efficiency, availability, resiliency, security and privacy

Hybrid ...

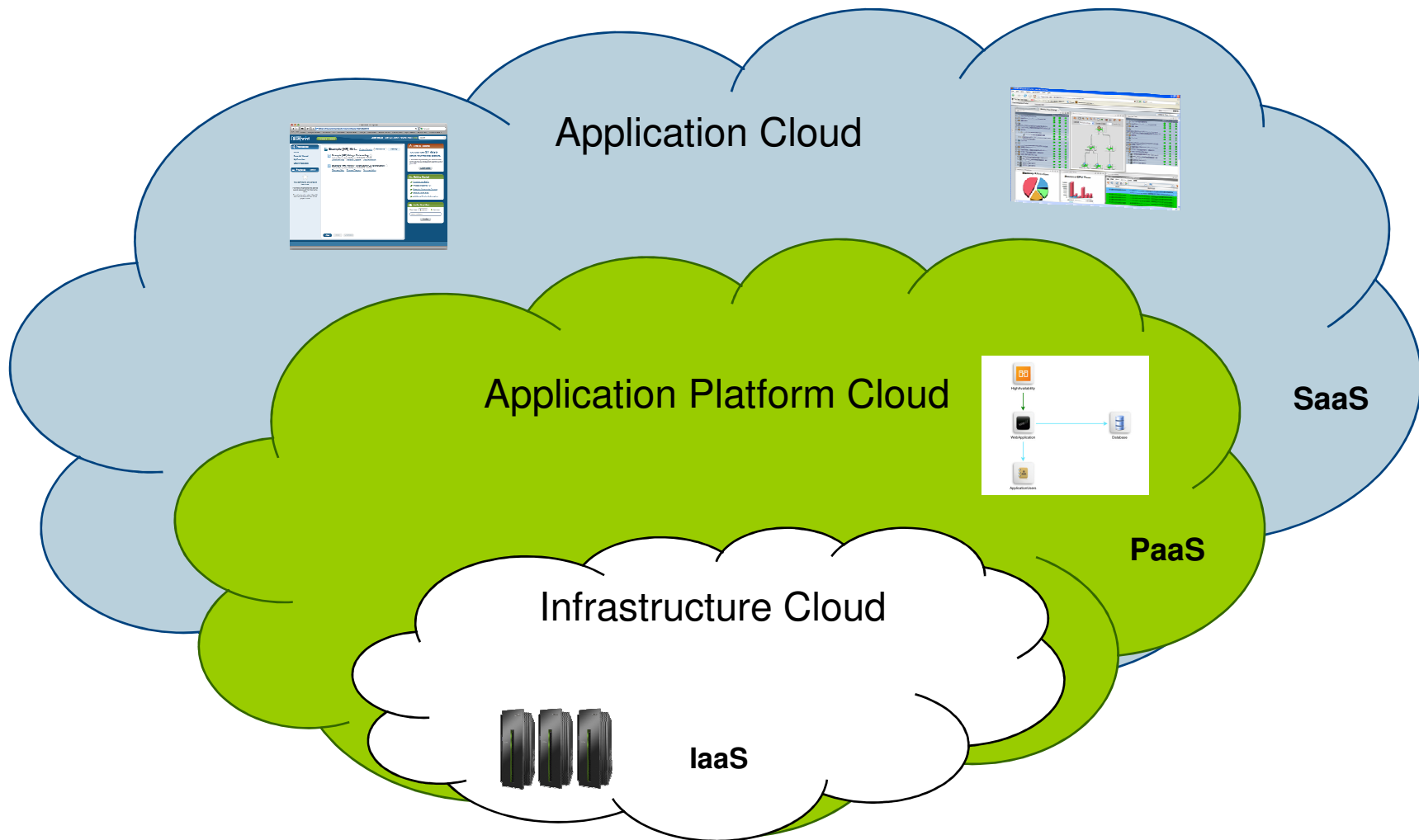
Access to client, partner network, and third party resources

ORGANIZATION CULTURE GOVERNANCE

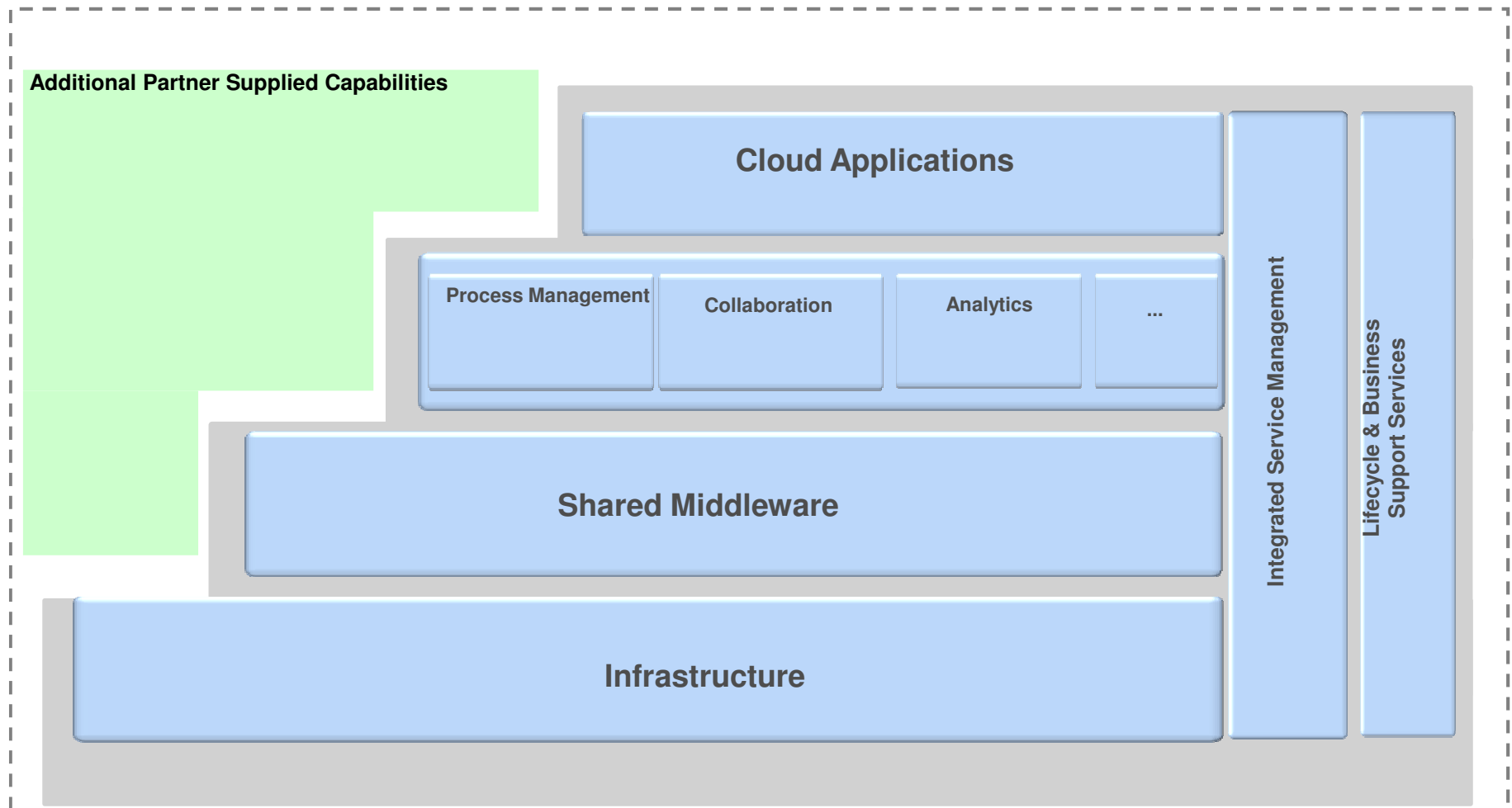
...service sourcing and service value



The Three Faces of the Cloud



An IBM architectural view of cloud computing



IBM Software

Impact2010

The Premier Conference for Business and IT Leaders



The Value of Application Aware Cloud Computing

Discover. Interact. Optimize.

MAY 2-7 Las Vegas, NV



What is Shared Middleware?

•Infrastructure View

•Central abstraction: **Virtual Machine**.

•Cloud provides:

- Compute hardware
- Network
- Storage

•IaaS does not understand or care about the software running inside the virtual machine.

Shared Middleware (aka PaaS)

Central Abstraction: **Application**

Cloud provides:

- Middleware runtimes
- Security
- Databases, Connectivity, Queues
- Caching
- Routing
- Storage

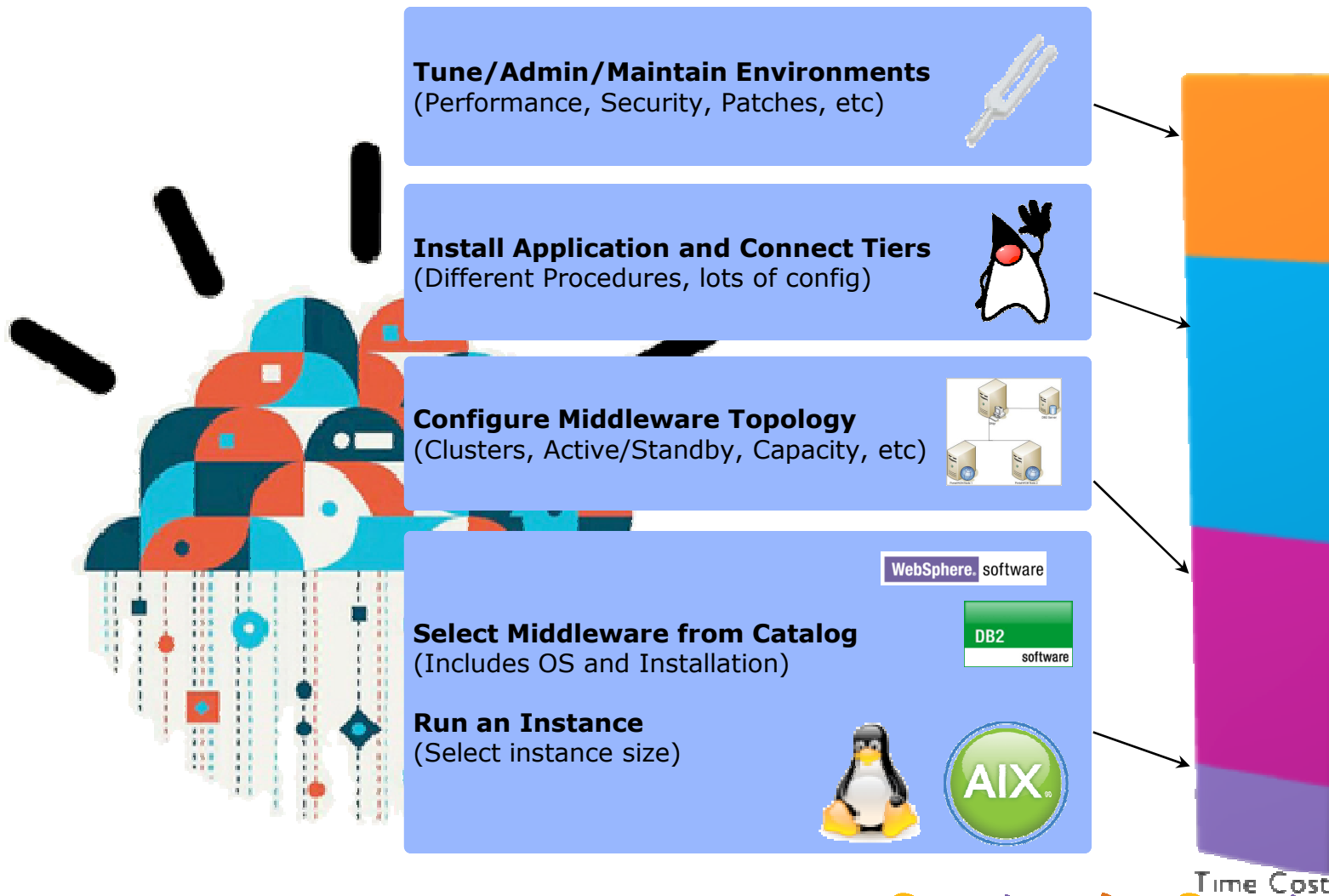
PaaS has a **viewpoint** on application, supporting a particular set of programming models and **understanding** the execution of the application deeply.



Running Your Application - Native Hardware



Running Your Application - Infrastructure Cloud



Running Your Application - Middleware-Aware Cloud




Tune/Admin/Maintain Environments
(Performance, Security, Patches, etc)





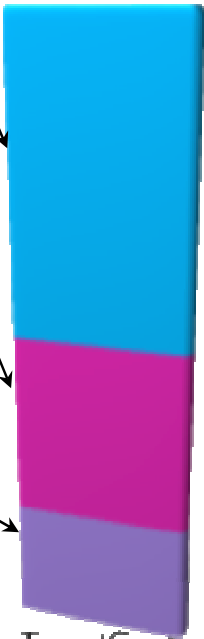

Script Application onto Pattern
(Standardized Patterns, Automation)



Select and Customize Topology Pattern



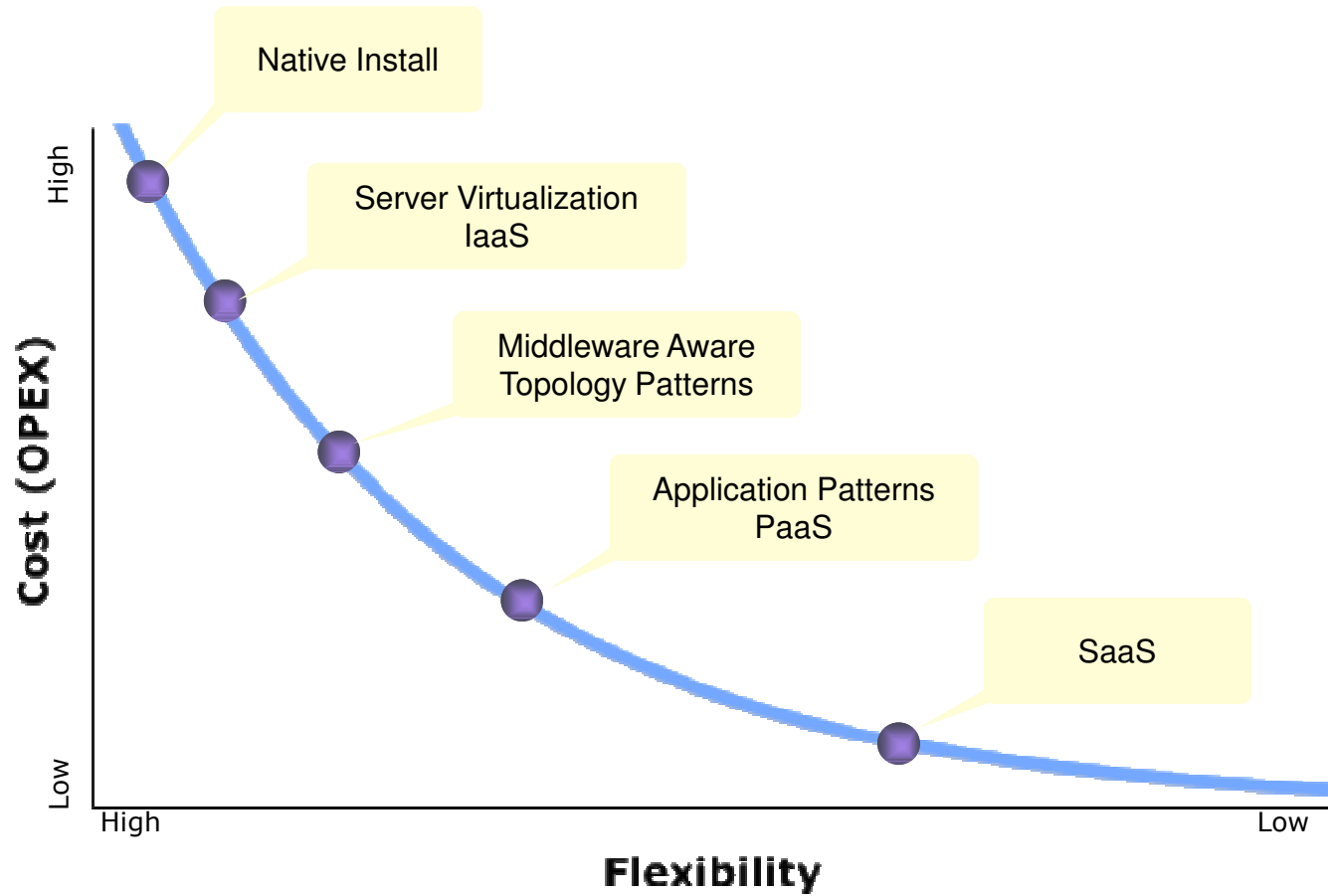
Includes OS & Middleware, Clustering, HA and other characteristics

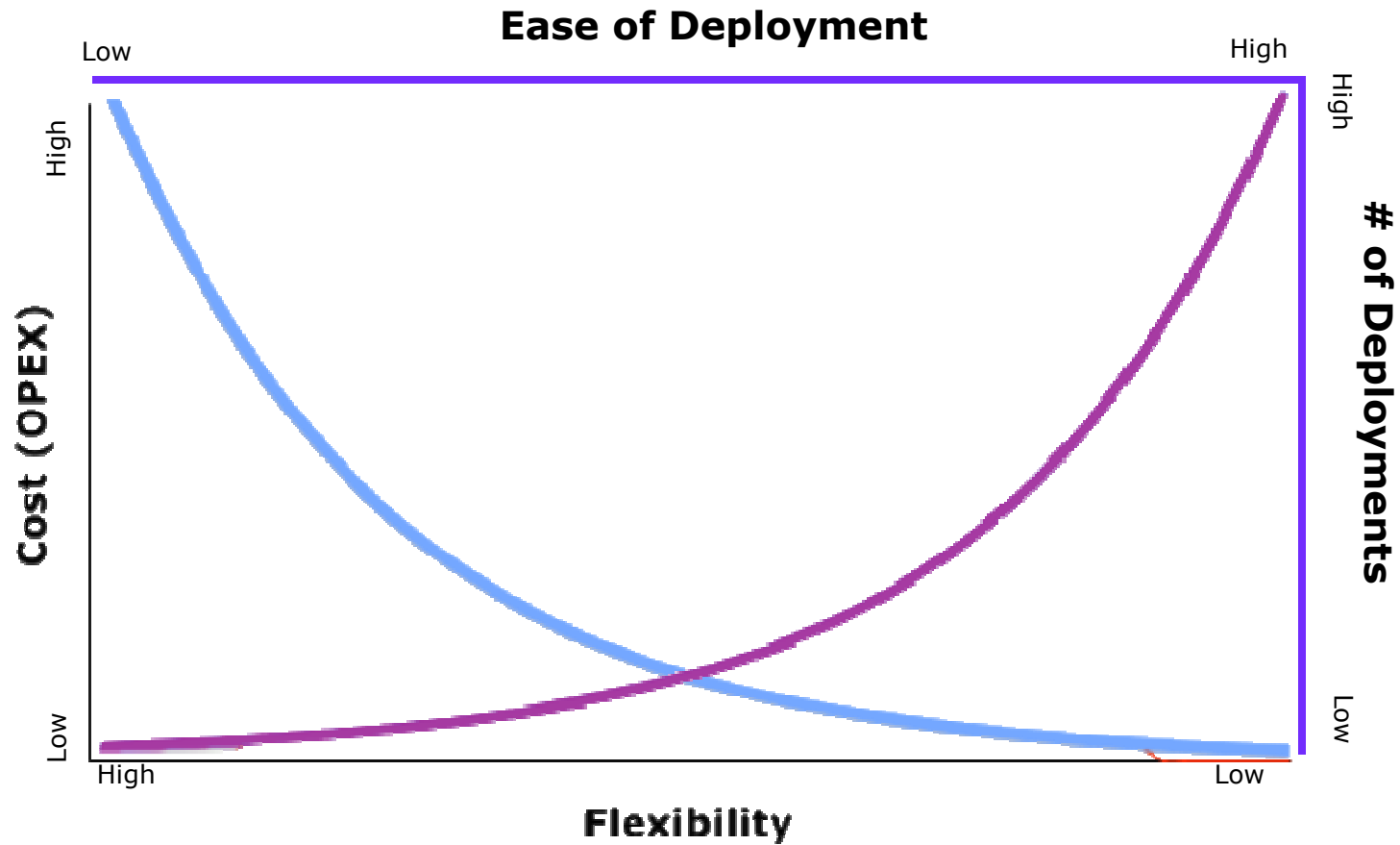
Time/Cost



Nothing is Free...



Unexpected Effects...



IBM Software

Impact2010

The Premier Conference for Business and IT Leaders









Required Capabilities

Discover. Interact. Optimize.

MAY 2-7 Las Vegas, NV



Shared Middleware Layer Desired Capabilities - Today

- Standardized Patterns for Workloads with automated deployment
 - Topology patterns in WebSphere Cloudburst Appliance (WCA) 
- Automated Application lifecycle management, including maintenance/patching/upgrades
 - WCA has fixpacks and Emergency fixes 
 - WebSphere Virtual Enterprise (WVE) has application editions 
- Standardized and automated QoS (High availability, elastic scaling, etc)
 - Clustered patterns in WCA 
 - Dynamic clusters in WVE 
- Self-service user model
 - Allow application owners to deploy and manage applications 



IBM Software

Impact2010

The Premier Conference for Business and IT Leaders



Getting Started Today

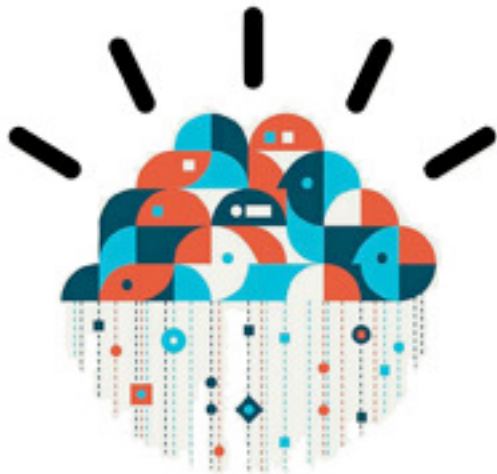
Discover. Interact. Optimize.

MAY 2-7 Las Vegas, NV

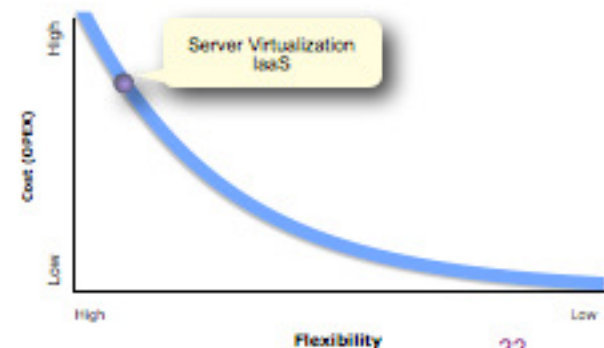


Getting Started on the Public Cloud

- Moving from native installations on private hardware to shared public infrastructure is an easy first step
- IBM has two solutions for the public clouds hosting WebSphere Middleware
 - IBM Smart Business Development & Test on the IBM Cloud
 - IBM Software on Amazon EC2



amazon.com[®]

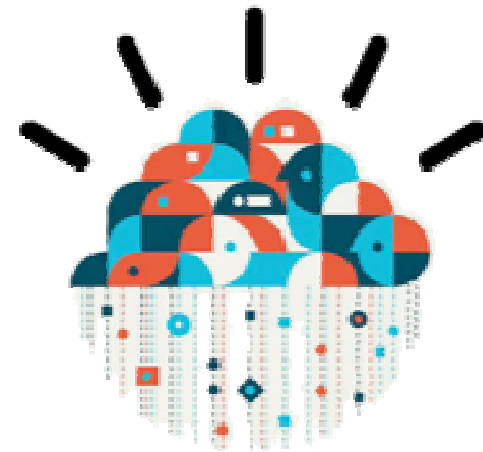


22

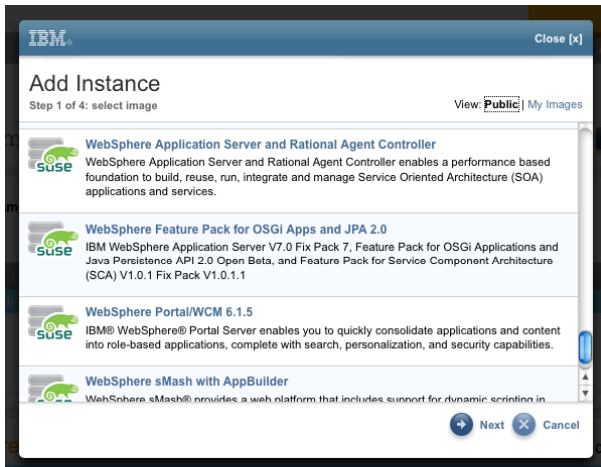


IBM Smart Business Development & Test on the IBM Cloud

- Excellent for PoCs, Dev/Test, Capacity Scale-up and Steady state usage
- Bring your existing IBM software licenses or pay-as-you-go
- Numerous products available with existing images
 - IBM WebSphere Application Server
 - IBM WebSphere sMash
 - IBM WebSphere Portal
 - Rational Software Architect
 - Rational Application Developer
 - more....



WebSphere on IBM Cloud



IBM Smart Business Welcome Jason McGee | Sign out

Development & Test

[Overview](#) | **[Control panel](#)** | [Account](#) | [Support](#) | [About](#)

[Instances](#) | [Images](#) | [Storage](#) [View asset catalog](#)

Find instance by tag name: + Add instance

Current filters: None

Instance name	OS	IP	Running	Created on	Status
WebSphere Application Server	SUSE Linux Enterprise v10	129.33.194.149	0 Days	Apr 12, 2010	Active

WebSphere Application Server [\[Change name\]](#) Expires: 4/19/10 **7 Days** [\[Extend\]](#)

+ Reboot instance
- Delete instance
+ Create image

OS: SUSE Linux Enterprise v10 SP2
IP: 129.33.194.149
Size: MEDIUM
Hostname: vm893.developer.ihost.com
Image: WebSphere Application Server and Rational Agent Controller
Storage: Not available

Access:
 → Generate key pair
 → Instructions

Instance tags:
 +

Type	Notifications	Date
●	Instance active	4/12/10 3:46 PM
●	Instance provisioning	4/12/10 3:39 PM



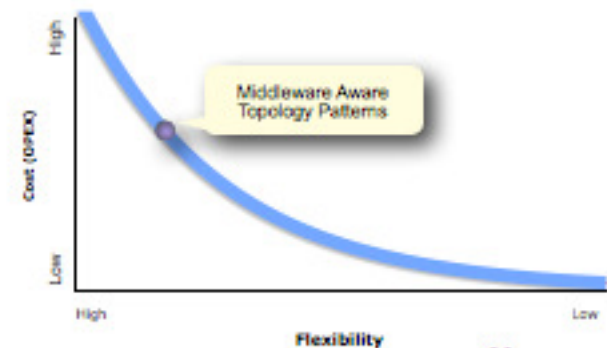
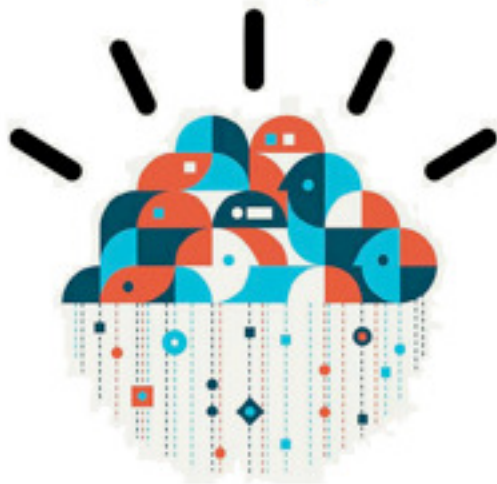
IBM Software on Amazon EC2

- Excellent for PoCs, Dev/Test, Capacity Scale-up and Steady state usage
- Bring your existing IBM software licenses or pay-as-you-go
- Numerous products available with existing AMIs
 - IBM WebSphere Application Server
 - IBM WebSphere sMash
 - IBM WebSphere eXtreme Scale
 - IBM DB2 Express and Workgroup
 - IBM Tivoli Monitoring
 - more....



Getting Started on the Private Cloud

- Moving from native installations on private hardware to a private cloud environment can save you time and money
- Two WebSphere solutions provide the foundation for getting started
 - IBM WebSphere Cloudburst Appliance
 - IBM WebSphere Virtual Enterprise

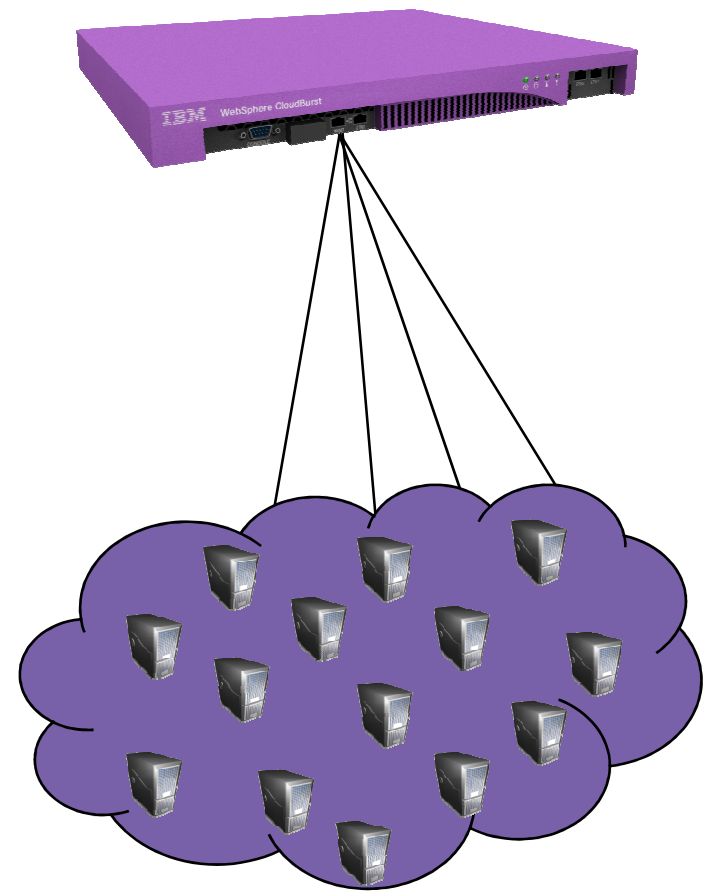


26



WebSphere Cloudburst Appliance

- Secure, self-service cloud management hardware appliance
- Unmatched WAS management (apply maintenance, federate cells, etc. - not black box)
- Dispenses hardened WAS patterns into a pool/cloud of virtualized hardware running a supported hypervisor
- Enables consistent & repeatable deployment of application environments based on patterns



Middleware Patterns in WebSphere Cloudburst

The screenshot displays the WebSphere CloudBurst Pattern Editor interface. The browser address bar shows the URL: `https://rmdp65.rtp.raleigh.ibm.com/dashboard/patterns/editor/?id=16`. The page title is "WebSphere CloudBurst" and the user is logged in as "Jason McGee".

The interface is divided into two main sections:

- Pattern Editor (Left):** Contains a search bar and a list of scripts. The "Scripts (7/7)" list includes:
 - Account Management Application
 - Add IBM HTTP Server node
 - Create Account Management Database
 - Create Data Source
 - Set node maintenance mode
 - Set server maintenance mode
 - WebSphere Application Server Samples
- Editing MyApplication (Right):** Shows a diagram of the application pattern. The diagram consists of several components connected by arrows:
 - Deployment manager (7.0.0.11):** A purple box on the left containing "WebSphere Application Server Samples" and "Create Data Source".
 - Custom nodes (7.0.0.11):** A grey box in the center.
 - On-demand routers (7.0.0.11):** A green box on the right.
 - Database (9.7.0.0):** A blue box at the bottom.Arrows indicate dependencies: "Deployment manager" depends on "Custom nodes", "On-demand routers" depends on "Custom nodes", and "Database" depends on "Custom nodes".



Copyright and Trademarks

© IBM Corporation 2009. All rights reserved. IBM, the IBM logo, ibm.com and the globe design are trademarks of International Business Machines Corporation, registered in many jurisdictions worldwide. A current list of IBM trademarks is available on the Web at "Copyright and trademark information" at www.ibm.com/legal/copytrade.shtml. Other company, product, or service names may be trademarks or service marks of others.

If you have any question, please contact Vietnamese team:

Hanoi:

Duong Cong Minh, minhdc@vn.ibm.com

Hochiminh:

Ngo Thanh Hien, hienggo@vn.ibm.com

