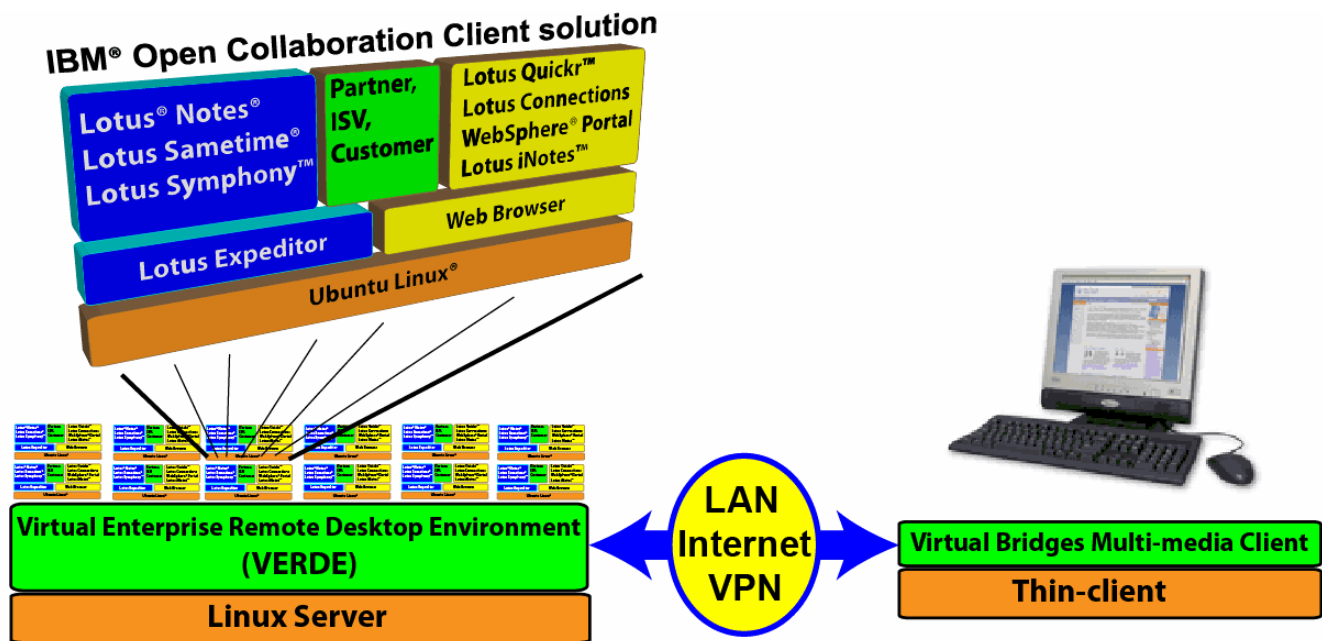


# IBM® Open Collaboration Client Solution *with* Virtual Bridges' VERDE and Canonical Ubuntu® Linux®



*Offering cost effective, collaboration and security rich open virtual desktops with IBM collaboration software and services, Ubuntu, and VERDE*



## IBM Open Collaboration Client Solution with virtualization

IBM's open virtual client capabilities combines the power and flexibility of the IBM Open Collaboration Client solution powered by the Canonical Ubuntu operating system with desktop virtualization from Virtual Bridges' VERDE (Virtual Enterprise Remote Desktop Environment). It includes Lotus Notes, Lotus Symphony and integrated Lotus Sametime and the opportunity to leverage IBM Web 2.0 capabilities. It provides a security-rich and cost effective Microsoft desktop alternative that offers flexibility and choice and an exciting opportunity to get started on desktops of the future. IBM Lotus® collaboration software empowers people to drive better business outcomes by accelerating growth, creating cultures of innovation, and speeding the business agenda. We deliver a market leading continuum of open and integrated collaboration and communications tools for business to tap into the collective intelligence of the entire value chain.

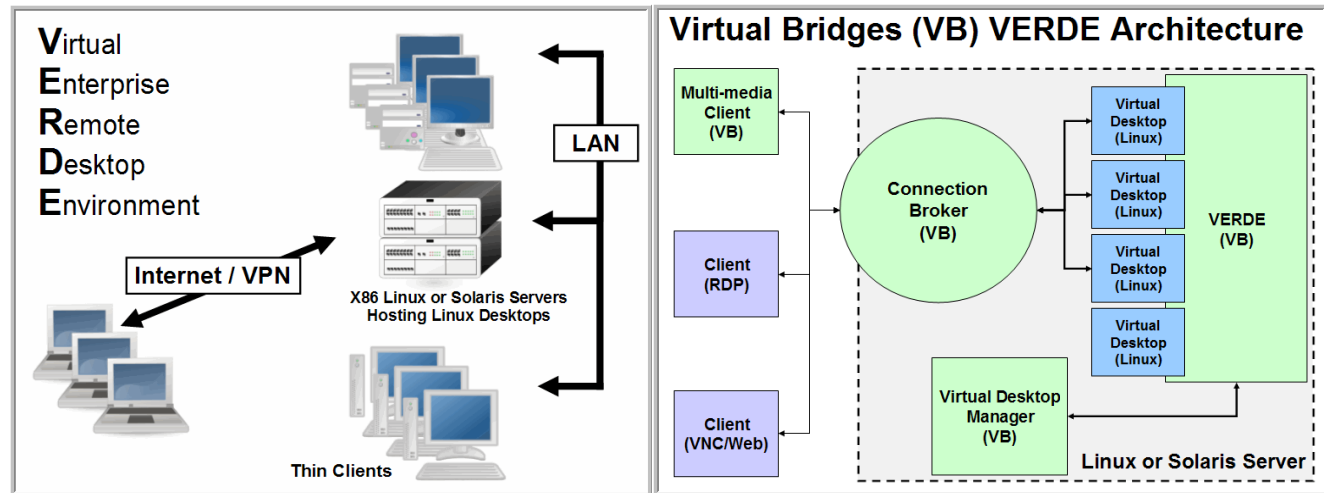
### FEATURES & BENEFITS

- IBM Lotus Software collaboration services
  - Mail, calendaring and collaborative applications using Lotus Notes/Domino, Domino Web Access, iNotes
  - Productivity tools for document, presentations, and spreadsheets
  - File sharing, document/content management, Instant Messaging, Presence awareness, Web Conferencing, VoIP, IP telephony integration, Application integration, Mashups, Blogs, Wikis, Community, Social bookmarks, Activities, Profiles, Portal, Dashboards/scorecards, Forms
  - Choice of rich, thin, mobile, web browser based, virtual clients
  - Single programming model provided by Lotus Expeditor which is based on Eclipse
  - Option to integrate with Software as a Service capabilities
- Lower Total Cost of Ownership (TCO)
- Flexibility and choice provided by the Ubuntu Linux operating system
- Desktop virtualization benefits include security, disaster recovery (*see other side for VERDE details*)

**More Information:** [ibm.com/software/lotus/openclient](http://ibm.com/software/lotus/openclient)

## Virtual Bridges Virtual Enterprise Remote Desktop Environment (VERDE)

Virtual Bridges' VERDE (Virtual Enterprise Remote Desktop Environment) is a powerful platform for consolidating Linux desktops on x86-based Linux servers. Using ordinary thin clients for the end-points, organizations benefit from reduced energy consumption, fewer points of failure, and increased security when compared to traditional desktop environments. The VERDE stack further facilitates desktop management through the use of powerful virtual machine technology. VERDE is fast, efficient, and highly scalable. Because of its foundation on Virtual Bridges VDI software, VERDE also benefits from over 20 years of proven experience and functionality in serving content-rich virtual desktops.



### FEATURES

- Serves modern Linux desktop environments and applications  
*Optionally serves legacy (Windows) applications side-by-side*
- Highly-scalable, supporting high-density deployments
- Multi-media playback to clients, enabling content-rich applications
- Seamless printing to clients
- Dynamic Renewable Desktop technology for centralized management of corruption-proof environments
- Dynamic Desktop Load Management to further increase responsiveness of sessions in high-density deployments
- Takes advantage of Intel VT or AMD-V virtualization extensions to increase performance and scalability via KVM on Linux hosts  
*Powerful, proven software virtualization technology for platforms not supporting VT or AMD-V*
- Serves clients connecting via LAN, WAN, or Internet  
*Seamlessly connect from thin client devices, repurposed/multi-role PCs, or mobile desktops*
- Integrates with existing Enterprise infrastructure such as LDAP or Active Directory
- Runs on industry-standard Linux or Solaris host platforms

### BENEFITS

- Reduce energy costs by consolidating desktop workloads and serving to low-consumption thin client devices
- Increase productivity and uptime by hosting desktops on more reliable server platforms
- Avoid re-training as users access familiar desktop environments
- Reduce management overhead with centralized updates
- Save time and money by reusing existing Enterprise infrastructure
- Avoid vendor "lock-in" thanks to "freedom of platform"
- Peace-of-mind, thanks to proven, established technology base

**More Information:** <http://www.vbridges.com>

© Copyright IBM Corporation 2008.

IBM Corporation, Software Group, Route 100, Somers, NY10589

Produced in the United States of America. 10-08 All Rights Reserved

IBM, the IBM logo, Domino, iNotes, Lotus, Lotus Notes, Quickr, Sametime, Symphony, and WebSphere are trademarks or registered trademarks of International Business Machines Corporation in the United States, other countries, or both. If these and other IBM trademarked terms are marked on their first occurrence in this information with a trademark symbol (® or ™), these symbols indicate U.S. registered or common law trademarks owned by IBM at the time this information was published. Such trademarks may also be registered or common law trademarks in other countries. A current list of IBM trademarks is available on the Web at "Copyright and trademark information" at [www.ibm.com/legal/copytrade.shtml](http://www.ibm.com/legal/copytrade.shtml)

Linux is a registered trademark of Linus Torvalds in the United States, other countries, or both.

Other company, product, or service names may be trademarks or service marks of others.