

Worldtalk

WorldSecure Server

E-mail Firewall and Security Policy Management

Today's widespread use of e-mail coupled with the growth of the Internet has opened new avenues for business-level communication and electronic commerce. E-mail has become an efficient mechanism for the transfer of critical files such as contracts, purchase orders and financial information, both within an organization and increasingly between organizations over the Internet. However, e-mail is not secure and presents severe risks to an organization's information assets as well as increased liability exposure. In this setting, a solution is needed to protect an organization's e-mail system and enforce e-mail security policies.

Introducing WorldSecure Server— The Industry's First E-mail Firewall

WorldSecure™ Server is an e-mail firewall that incorporates several policy enforcement tools and e-mail security countermeasures including content control, encryption, archival, and virus scanning into a single integrated solution.

WorldSecure Server provides a graphical, wizard-based configuration interface that simplifies the definition and enforcement of e-mail policies.

Enforce E-mail Security Policies

WorldSecure Server allows IT personnel and security or compliance officers to automate compliance monitoring and enforcement. WorldSecure Server provides the tools for:

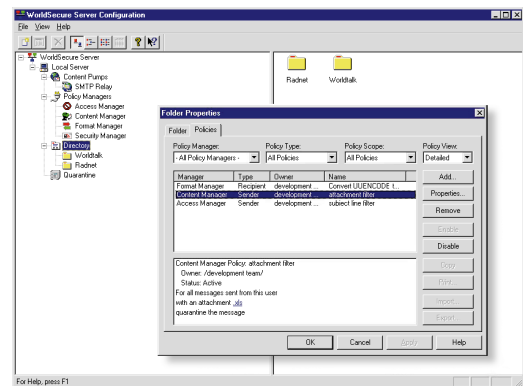
- Notifying senders of non-compliant messages
- Flagging questionable messages for review prior to transmission
- Ensuring that outgoing messages are encrypted and digitally signed for confidentiality and authenticity
- Archiving all or selected communications to meet regulatory or corporate policies
- Encrypting and digitally signing messages exchanged with third parties

Consolidate E-mail Security Countermeasures

WorldSecure Server offers a comprehensive set of e-mail security countermeasures that ensure the safe and efficient use of corporate e-mail systems while enforcing policy compliance.

Content Filtering

WorldSecure Server provides context-sensitive filtering tools that can be used to enforce electronic communication policies or flag suspicious messages for review. WorldSecure Server also scans embedded HTML and can scan for attachments by type or name.



WorldSecure Server includes an easy-to-use interface for security policy management

S/MIME Server-based Encryption and Digital Signature

WorldSecure Server provides server-based encryption and digital signatures using the S/MIME (Secure MIME) protocol. Two Servers can provide standards-based, secure e-mail over the Internet with complete transparency to end-users.

WorldSecure
Server

Policy Management

WorldSecure Server provides IT personnel and compliance officers with single point enforcement of e-mail usage policies applied at an organizational, workgroup, or user level. Policy definition includes filtering criteria, exception criteria, and actions to be taken upon policy violation. One or more actions can be defined including:

- Quarantining messages for later review
- Generating notification messages to one or more recipients
- Returning the message to the sender
- Annotating messages inline or as an attachment
- Adding recipients to messages
- Archiving messages to an administrator defined volume or directory

Ready-to-Use-Security

WorldSecure Server does not require any modification to existing e-mail infrastructure or any investment in Public Key Infrastructure. WorldSecure's server-based encryption and digital signature require a single certificate for the entire organization. This allows these organizations to quickly deploy encryption technology.

System Requirements

- 200 MHz or above Pentium-class CPU*
- 64MB RAM*
- 1 GB HD Drive*
- CD-ROM Drive (for installation)
- Microsoft Windows NT 4.0
- SMTP Mail Gateway or SMTP backbone

*Actual requirements will vary depending on message throughput requirements, message sizes, queue, and archive requirements.

WorldSecure Server also can secure communications with desktop S/MIME clients over the Internet. WorldSecure Server supports several encryption and signature algorithms, with support for export to military grade key lengths.

Virus Detection and Disinfection

WorldSecure Server provides an optional virus scanning engine which is fully integrated with the product. Utilizing the Trend Micro virus scanning technology, WorldSecure Server detects and optionally cleans or strips viruses from incoming and outgoing messages. Scheduled virus pattern updates provide protection from the latest viral threats.

Archiving

WorldSecure Server provides content-based archiving of e-mail messages providing a complete record of exchanged messages. This feature, combined with an audit trail of message exchange, offers comprehensive non-repudiation mechanisms.

Access Controls

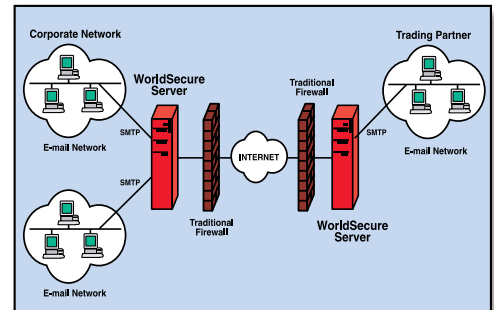
WorldSecure Server provides tools to monitor or restrict e-mail usage based on source, destination and other criteria. These filters can be easily combined with content filters for fine-tuned control. WorldSecure Server also provides tools for anti-relay and anti-spam connection management.

Encryption/Signature Policy Enforcement

WorldSecure Server provides the facilities to enforce organizational encryption and digital signature requirements. These same facilities can also be used to ensure server access to encrypted messages for the enforcement of other policies while maintaining complete security.

Deployment and Performance

WorldSecure Server is deployed on the clean side of an existing corporate firewall, enforcing e-mail policies on both incoming and outgoing messages. Operating transparently, WorldSecure Server does not require end-user training.



WorldServer Server includes a high-performance SMTP relay supporting load balanced and redundant configurations. Worldtalk benchmarks show that WorldSecure Server's message throughput considerably outperforms similarly configured products.



5155 Old Ironsides Drive
Santa Clara, CA 95054
800-454-4674 or 408-567-1500
www.worldtalk.com