

IBM Breeze for SCLM for z/OS



Installation Guide

Release 1

IBM Breeze for SCLM for z/OS



Installation Guide

Release 1

Note

Before using this document, read the general information under "Notices" on page 51.

Third Edition (August 2002)

This edition applies to Release 1 of the licensed program IBM Breeze for SCLM for z/OS (program number 5697-G58) and to all subsequent releases and modifications until otherwise indicated in new editions.

Order publications by phone or fax. IBM Software Manufacturing Solutions takes publication orders between 8:30 a.m. and 7:00 p.m. Eastern Standard Time (EST). The phone number is (800) 879-2755. The fax number is (800) 284-4721.

You can also order publications through your IBM representative or the IBM branch office serving your locality.

This publication is also available on the web at:

www.software.ibm.com/ad/sclmsuite

© Copyright Chicago Interface Group 2000, 2002.

© Copyright International Business Machines Corporation 2000, 2002. All rights reserved.

US Government Users Restricted Rights – Use, duplication or disclosure restricted by GSA ADP Schedule Contract with IBM Corp.

About this book

This book describes how to complete the installation of IBM Breeze for SCLM for z/OS (“Breeze”), after you have followed the instructions in the *Breeze Program Directory*. The *Breeze Program Directory* describes the System Modification Program/Extended (SMP/E) installation of Breeze; this book describes the post-SMP/E installation. This book assumes that SMP/E installation is complete.

The book is organized into several steps, with checkpoints along the way for Installation Verification Procedure (IVP) testing. These steps should be followed in the order that they are presented.

When you have successfully completed all of the steps and run all of the IVP jobs described in this book, see the *Breeze Planning and Administration Guide* for further steps you might need to complete before using Breeze.

Who should read this book

This book is aimed at system administrators who are familiar with installing products under z/OS or OS/390.

Related information

For an introduction to Breeze, see the *Breeze Functional Overview*.

For the latest information about Breeze, go to www.ibm.com/software/ad/sclmsuite/breeze/

For information about using SCLM, see the *SCLM Project Manager’s and Developer’s Guide*.

For other related information, see the “Bibliography” on page 55.

How to send your comments

Your feedback is important in helping us to provide the most accurate and highest quality information. If you have any comments about this book or any other Breeze documentation, contact us in one of these ways:

- Fill out the Readers’ Comments form at the back of this book, and return it by mail or give it to an IBM representative.
- If the form has been removed, address your comments to:

IBM Corporation,
H150/090
555 Bailey Avenue
San Jose, CA 95141-1003
U.S.A.

- Fax your comments to this U.S. number: (800) 426-7773
- Use the online form at www.ibm.com/software/ad/rcf/

Be sure to include the title and part number of the book and, if applicable, the specific location of the text you are commenting on. When you send information to

IBM, you grant IBM a nonexclusive right to use or distribute the information in any way it believes appropriate without incurring any obligation to you.

Summary of changes - Third Edition (August 2002)

The following enhancements and changes have been made to Breeze for SCLM for z/OS Version 1 since the last release of the documentation.

- Clarification of the Optional Email delivery system.
- Breeze package parameters added to the normal SCLM promote panel to allow changes to the Breeze parameters when submitting a batch promote.
- Various minor technical corrections.

Contents

About this book	iii
Who should read this book	iii
Related information.	iii
How to send your comments	iii

Summary of changes - Third Edition (August 2002)	v
---	----------

Figures	ix
--------------------------	-----------

Chapter 1. Installation Overview	1
Breeze Components	1
JCL Members Modified During Installation	2
Sample Members Modified During Installation	2

Chapter 2. A Step-by-Step Approach	3
---	----------

Chapter 3. Steps to Checkpoint One	5
Step 1. Review Software and Hardware Considerations.	5
System Requirements	5
Software Requirements	5
Product Space Requirements	5
Step 2. Implement Site Standards	6
ISPF/SCLM Data Set Names	6
Checkpoint 1	7

Chapter 4. Steps to Checkpoint Two	9
Step 3. Set Up the Breeze Sample Database	9
Modify BZZSMJ03	9
Step 4. Ensure Database Integrity Through GRS or Similar Product	9
Database File Integrity.	10
Recommended GRS Parameters	10
Step 5. Set Up the Sample CIGINI Initialization File	10
Creating a CIGINI Load Module	10
CIGINI Sections	10
Define Common Section	11
Define Breeze Section	11
Modify BZZSMJ04	12
Step 6. Set Up Database Backup and Restore Jobs	13
Modify BZZSMJ05	14
Checkpoint 2	17

Chapter 5. Steps to Checkpoint Three	19
Step 7. Customize the CTS Server JCL and Supporting Control Files	19
Step 7a. Modify BZZSMSRV.	19
Step 7b. Review the BZZSMPKG and BZZSMPRT Browser JCL Shells	20
Step 7c. Configure the Java CONTROL Member--BZZ\$CNTL	26

Step 8. CTS Server Installation Verification	26
To test the CTS server:.	26
Checkpoint 3	28

Chapter 6. Steps to Checkpoint Four	29
Step 9. Customizing and Testing the Breeze Web interface	29
BZZHTML	29
Modify BZZSMJX3	30
Test brsclm.html.	31
Logging into Breeze and Testing Minimum Functions	31
How will Your End-Users Access Breeze?	33
Checkpoint 4	34

Chapter 7. Steps to Checkpoint Five	35
Step 10. Package Detail Report IVP	35
BZZSMJ06—Batch Reporting Utility	35
Checkpoint 5	37

Chapter 8. Steps to Checkpoint Six	39
Step 11. Modify the SCLM Log-On Proc to Include Breeze ISPF Component Libraries	39
Step 12. Connect the Breeze product to SCLM.	39
Step 12a. Review and Modify IBM Skeleton FLMLIBS	39
Step 12b. Update the FLMCNTRL Definition in the Project Definition Table	42
Checkpoint 6	43

Chapter 9. Steps to Checkpoint Seven	45
Step 13. Approver Notification for Breeze Applet.	45
Step 13a. Configure the SMTP Server to Support Email	45
Step 13b. Create the Configuration Member \$\$\$SMTP.	45
Step 13c. Configure the \$\$HTML Member	47
Sample Email Output	48

Chapter 10. Checkpoint 7.	49
--	-----------

Notices	51
Trademarks	52

Glossary	53
---------------------------	-----------

Bibliography	55
-------------------------------	-----------

Index	57
------------------------	-----------

Figures

1. BZZSMJ03	9	9. BZZSMPKG	22
2. Sample CIGINI	11	10. BZZHTML	30
3. BZZSMJ04 (part 1)	12	11. BZZSMJX3	31
4. BZZSMJ04 (part 2)	13	12. Breeze login prompt	32
5. BZZSMJ05 (part 1)	14	13. Breeze main panel	32
6. BZZSMJ05 (part 2)	15	14. BZZSMJ06	35
7. BZZSMJ05 (part 3)	16	15. Package Detail Report	36
8. BZZSMSRV	20	16. BZZSMJX4	47

Chapter 1. Installation Overview

This chapter describes the components of Breeze, and lists the JCL members that you will be using to install these components.

Breeze Components

Breeze consists of these components:

Package database

VSAM data set containing Breeze package records and (optionally) the three types of record for defining approvers: inventory junction records, approver group records and approver records.

Package records are created during the SCLM promote function by one of the Breeze user exits (see below).

The records for defining approvers are only required if your site uses Breeze to vote on package promotion. When you have completed the steps in this book, see the *Breeze Planning and Administration Guide* for information about using the Breeze batch utilities to define approvers.

User exits

Programs that customize the SCLM build and promote functions (for example, to create package records in the Breeze package database). For a detailed description of what these exits do, see the *Breeze User's Guide*.

ISPF components

Various ISPF pop-up windows that the Breeze user exits display during SCLM foreground processing. These are also described in the *Breeze User's Guide*.

CTS server

Combines:

- An HTTP server that hosts the Breeze Web interface with
- Software that allows the Web interface to access the package database

Web interface

A Web page, hosted by the CTS server, that allows users to view and vote on packages. This Web page consists of a single HTML file and a Java applet. The HTML file acts as a container for the applet, allowing it to run inside a Web browser. To use the Breeze Web interface, users point their Web browsers to the HTML file on the CTS server. The HTML file contains tags that cause the browser to download the applet from the CTS server, and run the applet inside the browser. For information on using this applet, see the *Breeze User's Guide*.

Batch utilities

Various utilities for maintaining or reporting on the Breeze package database (for example, to define approvers, delete old package records, or report on specified packages).

JCL Members Modified During Installation

In the installation steps described later in this book, you will modify the following JCL members located in SBZZJCL:

BZZSMJX3	JCL to translate BZZHTML into ASCII format (optional)
BZZSMJX4	JCL to test the e-mail interface
BZZSMJ03	JCL to build package database with demo data
BZZSMJ04	JCL to create CIGINI
BZZSMJ05	JCL for define/backup of package database
BZZSMJ06	JCL to run batch reports
BZZSMPKG	JCL shell used in CTS server for approval process
BZZSMPRT	JCL shell used by CTS server for browse requests
BZZSMSRV	JCL to invoke the CTS server

SBZZJCL also contains sample JCL members for Breeze batch utilities that are not modified during installation (for more information about these utilities, see the *Breeze Planning and Administration Guide*):

BZZSMJU1	JCL to update individual approver records
BZZSMJG1	JCL to update approver group records
BZZSMJIJ	JCL to assign and update inventory locations
BZZSMJP1	JCL to run source monitoring utility
BZZSMJA1	JCL to build cross-reference reports
BZZSMJV1	JCL to cast and tally approver votes
BZZSMJS1	JCL to run the promotion sweep utility
BZZSMJD1	JCL to run the package delete utility

Sample Members Modified During Installation

In the installation steps described later in this book, you will be modifying the following sample (non-JCL) members located in SBZZJCL:

BZZSMFLM	Sample SCLM Exit Setup
BZZ\$HTML	Sample HTML file for EMAIL
BZZ\$SMTP	Sample SMTP control file
BZZTSTTO	Sample member SMTP setup test
BZZ\$CNTL	Sample port definition parameter
BZZHTML	Sample HTML for Breeze Applet IVP

Chapter 2. A Step-by-Step Approach

Step	Description
	1. Review system, software, and hardware considerations.
	2. Implement site standards.
<i>Checkpoint 1.</i>	Verify steps so far.
	3. Set up the sample Database.
	4. Ensure database integrity via MIM or GRS.
	5. Set up the sample CIGINI initialization file.
	6. Set up database backup and restore jobs.
<i>Checkpoint 2.</i>	Verify steps since previous checkpoint.
	7. Review and customize the CTS server JCL.
	8. Run the CTS server invocation IVP.
<i>Checkpoint 3.</i>	Verify steps since previous checkpoint.
	9. Run the Breeze applet invocation and logon IVP.
<i>Checkpoint 4.</i>	Verify steps since previous checkpoint.
	10. Run the Breeze Package Detail Report IVP.
<i>Checkpoint 5.</i>	Verify steps since previous checkpoint.
	11. Modify the SCLM log-on proc.
	12. Connect Breeze to SCLM.
<i>Checkpoint 6.</i>	Verify steps since previous checkpoint.
	13. Configure and test email delivery system.
<i>Checkpoint 7.</i>	Verify steps since previous checkpoint.

Chapter 3. Steps to Checkpoint One

Step 1. Review Software and Hardware Considerations

In this step you will review the system, software, and hardware requirements for product installation.

System Requirements

To successfully install Breeze, the following system requirements must be in place at your installation:

- OS/390 Version 2 Release 7 or later, or z/OS Version 1 Release 1 or later
- Dedicated port number for CTS server (described in “Step 7c. Configure the Java CONTROL Member-- BZZ\$CNTL” on page 26). This port number must be higher than 1024, as port numbers lower than this are reserved for internal system services.
- One authorized LOADLIB
- IP address of mainframe or named server on mainframe
- SMTP server (required for email notification)
- SYSOUT class and name of SMTP server
- SYSOUT class for internal job submission
- One of the following:
 - Microsoft Internet Explorer 5.0 or later
 - Netscape 4.7 or later

Software Requirements

Breeze requires that IBM’s Software and Configuration Library Manager (SCLM) be implemented on your mainframe. Additionally, at least one SCLM Project must be defined. Before proceeding, contact your systems administrator to ensure that these requirements are in place.

Product Space Requirements

The table below outlines the space requirements for the Breeze product software and supporting libraries. Note that the following estimates are based on 3390 track allocations.

Table 1. Total DASD Space Required by Breeze

Library Type	Total Space Required
Target	112 Tracks on 3390
Distribution	112 Tracks on 3390

Step 2. Implement Site Standards

Make a copy of this page and, as you complete each installation step, fill in the worksheets for later use.

The following worksheet lists placeholders representing values that are site-specific. These placeholders are indicated in this chapter by the use of lowercase italics in the reproduced JCL. Substitute your site-specific values in all installation and implementation JCL.

Table 2. Worksheet for Site-Specific Placeholder Values

Place Holder	Definition	Your Site Value
<i>dvolser</i>	Volume serial number of the disk used to store permanent data sets (if needed).	
<i>dunit</i>	Unit label for permanent disk data sets (usually SYSDA). This specification is limited to 6 characters.	
<i>tdisk</i>	Unit label for temporary disk data sets: usually SYSDA). This specification is limited to 6 characters.	
<i>flhq1</i>	High-level qualifier for the Breeze datasets. (In the supplied JCL, the default high-level qualifier for the Breeze target library is BZZ.)	
<i>flhq2</i>	Second-level qualifier for the Breeze datasets.	
<i>password</i>	Breeze password.	
<i>ip-addr</i>	IP address of the z/OS or OS/390 host where Breeze is installed.	
<i>port</i>	Port number of the CTS server. Note: <i>ip-addr</i> and <i>port</i> determine the Web address of the Breeze Web interface: <code>http://ip-addr:port/brsc1m.html</code>	

ISPF/SCLM Data Set Names

Additionally, identify the data set names for your current ISPF/SCLM environment as per the following worksheet. These data set names will be needed for batch JCL updates.

Table 3. Worksheet for Site-Specific DDnames

DDname	Dataset Names Examples	Your Dataset Names
<i>STEPLIB</i>	ISP.SISPLPA ISP.SISPLOAD	
<i>ISPPLIB</i>	ISP.SISPPENU	
<i>ISPMLIB</i>	ISP.SISPMENU	
<i>ISPSLIB</i>	ISP.SISPSLIB ISP.SISPSENU	
<i>SYSPROC</i>	ISP.SISPCLIB ISP.SISPEXEC	
<i>ISPTLIB</i>	ISP.SISPTENU	

Checkpoint 1

At this point the following libraries should be allocated and populated. Using ISPF Option 3.4, verify that these files have been created and contain data.

Data Set Names	Completed?
BZZ.SBZZLOAD	
BZZ.SBZZMENU	
BZZ.SBZZPENU	
BZZ.SBZZSENU	
BZZ.SBZZCLIB	
BZZ.SBZZJCL	
BZZ.SBZZJAVA	
BZZ.SBZZDMDB	

Chapter 4. Steps to Checkpoint Two

Step 3. Set Up the Breeze Sample Database

In this step you will create and populate the Breeze sample database, which is used as part of the Installation Verification Process (IVP).

Modify BZZSMJ03

In this step you will modify the member BZZSMJ03 that will define the Breeze Package database. BZZSMJ03 is located in the SBZZJCL target library.

```
/**(JOB CARD)
/**
/** ----- *
/** NAME:      BZZSMJ03                               *
/** PURPOSE:  ALLOCATE THE BREEZE FOR SCLM DATABASE AND POPULATE *
/**           WITH THE BREEZE FOR SCLM DEMO DATA FOR IVP.      *
/** ----- *
/** TO USE THIS JCL, YOU MUST:                             *
/**     1) INSERT A VALID JOB CARD WITH VALID CLASS.         *
/**     2) CHANGE THE DVOLSER VALUE AS PER WORKSHEET. IF YOUR *
/**        SITE IS USING SMS FOR VSAM FILE ALLOCATION, THEN    *
/**        YOU MAY NOT NEED THIS PARAMETER.                  *
/** ----- *
/** ALLOCATE THE BREEZE PACKAGE DATABASE                   *
/** ----- *
//STEP1 EXEC PGM=IDCAMS
//SYSPRINT DD SYSOUT=*
//INDD01 DD DSN=BZZ.SBZZDMDB(BZZDEMO),DISP=SHR
//SYSIN DD *
DELETE BZZ.SBZZPKG.DATABASE
DEFINE CLUSTER -
  (NAME('BZZ.SBZZPKG.DATABASE') -
   SPEED UNIQUE FREESPACE(30 30) -
   CYLINDERS(10 10) -
   VOLUMES(dvolser) -
   SHR(4 3) -
   KEYS(80 0) -
   RECORDSIZE(80 720)) -
  DATA (CISZ(16000)) -
  INDEX (CISZ(4096))
REPRO INFILE(INDD01) OUTDATASET('BZZ.SBZZPKG.DATABASE')
/*
```

Figure 1. BZZSMJ03

Step 4. Ensure Database Integrity Through GRS or Similar Product

The IBM product that is typically used to manage cross-system enqueues is the Global Resource Serialization (GRS) product. Sample setup parameters are shown below.

In this step, you will define the product enqueue name to GRS (or your choice of a similar program). If you are running SCLM suite products in a multi-LPAR and/or

multi-CPU environment where the product database(s) will be accessed from multiple operating system images, this step is required. This specifically applies to Parallel Sysplex implementations.

Database File Integrity

Breeze utilizes standard VSAM files for data storage. Internal product processing utilizes the operating system ENQ/DEQ macros when performing VSAM file access. The SYSTEMS option on the ENQ macro is used to ensure that cross-system file locking is performed. The Breeze QNAME is called CIGQNAME. The RNAME is the VSAM data set name (dsname).

Recommended GRS Parameters

The GRS parameters recommended for the CIGQNAME are:

```
RNLDEF RNL(INCL) TYPE(GENERIC)
QNAME(CIGQNAME)
RNLDEF RNL(CON) TYPE(GENERIC)
QNAME(CIGQNAME)
```

Step 5. Set Up the Sample CIGINI Initialization File

In this step you will create the CIGINI load module that contains various product parameters such as product password, database names, and the product load library name.

Creating a CIGINI Load Module

The CIGINI load module must be located in the Breeze LOADLIB (SBZZLOAD). Create the CIGINI load module by executing the JCL in member BZZSMJ04 of the SBZZJCL data set. As input to the job, you will need to do the following:

1. Modify BZZSMJ04. A sample CIGINI text member, shown below, is located in-stream in this SBZZJCL member. Change the configuration statements to reflect your site's information.
2. Submit BZZSMJ04 to create your CIGINI. When successful, a new load (CIGINI) will be added to the Breeze LOADLIB (SBZZLOAD).

CIGINI Sections

The CIGINI text shown below (available in the SBZZJCL data set) contains the options necessary for running Breeze using the sample database created in "Step 3. Set Up the Breeze Sample Database" on page 9. The CIGINI text member is divided into sections as described below:

COMMON SECTION	parameters common to all SCLM suite products
Breeze product	parameters

The COMMON SECTION is always required. Inclusion of additional sections is dependent upon the SCLM suite products that you are installing.

If you are also installing IBM Cloud 9 for SCLM for z/OS ("Cloud 9"), then you must modify the Cloud 9 members CLZJDYN and CLZJIBM to include the Breeze libraries. Also, you must modify the CIGINI member in Cloud 9 to include the DEFINE BRSCLM SECTION described below.

Note: This step of setting up the CIGINI initialization file should also terminate with COND CODE=0.

```

* ----- *
* THIS IS THE BREEZE FOR SCLM SAMPLE CIGINI INPUT. *
* PLEASE MODIFY TO MEET YOUR NAMING STANDARDS. *
* ----- *
DEFINE COMMON SECTION
  PRODUCT LOADLIB      = 'BZZ.SBZZLOAD'
  WORK UNIT            = tdisk
  VIO UNIT             = VIO
  JAVASERVERCONTROL DSNAME = 'BZZ.SBZZJAVA'
                      MEMBER = BZZ$CNTL
DEFINE BRSCLM SECTION
  PASSWORD = 'password'
  VSAM DSNAME = 'BZZ.SBZZPKG.DATABASE'

```

Figure 2. Sample CIGINI

Define Common Section

This section is always required. The COMMON Section describes parameters required by all SCLM suite products.

Syntax	Purpose	Usage
DEFINE PRODUCT LOADLIB = BZZ.SBZZLOAD	Defines the name of the product load library. Default: None	Required
WORK UNIT = <i>tdisk</i>	Defines DASD unit name for temporary disk files. Maximum length = 6. Default: None	Required
VIO UNIT = <i>tdisk</i>	Defines DASD unit name for temporary disk files in those situations where SCLM suite products can take advantage of VIO disk access. Maximum length = 6.	Required
DO NOT ALLOW ALTERNATE CIGINI		
JAVASERVER CONTROL DATASET/DSNAME = BZZ.SBZZJAVA	Name of the Java Control Data set in the Common section. Default: None	Required
MEMBER	Name of member that contains the port number for the server. Default: BZZ\$CNTL	Required

Define Breeze Section

This section describes parameters required by the IBM Breeze for SCLM product.

Syntax	Purpose	Usage
PASSWORD = <i>password</i>	This required keyword and variable are checked during invocation of the product. It must be a valid temporary or permanent password provided by IBM. Default: None	Required

Syntax	Purpose	Usage
VSAM DSNAME = BZZ.SBZZPKG.DATABASE	This required keyword and variable is how the Breeze product knows what database to use. This file must be allocated prior to compiling the CIGINI or the compilation will fail.	Required

Modify BZZSMJ04

```

/* (JOB CARD)
/* -----*
/* NAME: BZZSMJ04 *
/* PURPOSE: PARSE, COMPILE AND LINK THE CIGINI MODULE. *
/* -----*
/* TO USE THIS JCL, YOU MUST: *
/* 1) PERFORM MODIFICATION TO INLINE //CIGIN DATA. *
/* SAMPLE PROVIDED WILL NOT COMPILE AS DELIVERED. *
/* 2) INSERT A VALID JOB CARD WITH VALID CLASS AND REGION=0M *
/* 3) CHANGE THE UNIT=TDISK AS PER THE WORKSHEET. *
/* *
/* -----*
/* *
/* STEP 1: PARSE CIGINI SYNTAX. BUILD INPUT FOR ASSEMBLER. *
/* *
/* -----*
//PARSE EXEC PGM=ICOMPILE
//STEPLIB DD DSN=BZZ.SBZZLOAD,DISP=SHR
//CIGPUNCH DD DSN=&&TEMP,DISP=(NEW,PASS),
// UNIT=TDISK,SPACE=(10,10),
// DCB=(BLKSIZE=3120,LRECL=80,RECFM=FB)
//CIGLOG DD SYSOUT=*
//CIGIN DD *
* -----*
* THIS IS THE BREEZE FOR SCLM SAMPLE CIGINI INPUT. *
* PLEASE MODIFY TO MEET YOUR NAMING STANDARDS. *
* -----*
DEFINE COMMON SECTION
  PRODUCT LOADLIB = 'BZZ.SBZZLOAD'
  WORK UNIT = tdisk
  VIO UNIT = VIO
  JAVASERVERCONTROL DSNAME = 'BZZ.SBZZJAVA'
  MEMBER = BZZ$CNTL

DEFINE BRSCLM SECTION
  PASSWORD = 'password'
  VSAM DSNAME = 'BZZ.SBZZPKG.DATABASE'

```

continued on next page...

Figure 3. BZZSMJ04 (part 1)

```

/*-----*
/*
/* STEP 2: ASSEMBLE THE CIGINI INPUT CREATED IN STEP 1.
/*
/* NOTE: CHOOSE THE DESTINATION OF YOUR CIGINI FILE.
/*
/*-----*
/* ASMA90 (HL-ASM)
/* IEV90 (ASSEMBLER-H)
//ASM EXEC PGM=ASMA90,
// REGION=3072K,
// COND=(0,NE),
// PARM='NODECK,OBJECT,NOTERM,LIST,XREF(SHORT)'
//SYSIN DD DSN=&&TEMP,DISP=(OLD,DELETE)
//SYSLIB DD DSN=SYS1.MACLIB,DISP=SHR
//SYSLIN DD DSN=&&SYSLIN,
// UNIT=tdisk,SPACE=(TRK,(3,5)),
// DISP=(NEW,PASS,DELETE),
// DCB=(RECFM=FB,LRECL=80,BLKSIZE=3200)
//SYSPUNCH DD DUMMY
//SYSUT1 DD UNIT=tdisk,SPACE=(TRK,(5,15))
//SYSPRINT DD SYSOUT=*
/*-----*
/*
/* STEP 3: LINK EDIT THE CIGINI MODULE.
/*
/*-----*
//LINK EXEC PGM=IEWL,
// REGION=2048K,
// PARM='LIST,NCAL,XREF,LET,RENT,REUS',
// COND=(0,NE)
//SYSPRINT DD SYSOUT=*
//SYSLIN DD DSN=&&SYSLIN,
// DISP=(OLD,DELETE,DELETE)
//SYSLMOD DD DSN=BZZ.SBZZLOAD(CIGINI),DISP=SHR
//SYSUT1 DD UNIT=tdisk,SPACE=(TRK,(5,15))

```

Figure 4. BZZSMJ04 (part 2)

Step 6. Set Up Database Backup and Restore Jobs

The VSAM files used by Breeze require regular maintenance and monitoring. In this step you will set up the database backup and maintenance job for the Breeze Package database. Note that this job will need to be implemented for all Breeze databases. The JCL member to accomplish this (BZZSMJ05) is located in the SBZZJCL data set.

Modify BZZSMJ05

```
/**(JOB CARD)
/**
/** ----- *
/** NAME:      BZZSMJ05 *
/** PURPOSE:   THE PURPOSE OF THIS JCL IS REORG AND REBUILD THE *
/**           BREEZE FOR SCLM DATABASE. *
/** ----- *
/** *
/** MODIFY THIS JCL TO MEET YOUR SITE REQUIREMENTS IN THE FOLLOWING *
/** WAYS. *
/** *
/**           1) INCLUDE A JOB CARD *
/**           2) CHANGE FLHQ1 AS PER WORKSHEET. *
/**           3) CHANGE DVOLSER TO THE VOL SER OF THE DISK USED TO *
/**              STORE THE BREEZE DATABASE. *
/**           4) CHANGE DUNIT AS PER WORKSHEET. *
/**           5) CHANGE TDISK AS PER WORKSHEET. *
/**           6) CUSTOMIZE STEP2 AND STEP3 TO INCLUDE YOUR PACKAGE *
/**              REGISTRY CONTROL FILE NAME. *
/**           7) SIZE THE BOTH THE STEP2 SPACE PARAMETERS AND THE *
/**              STEP3 SPACE PARAMETERS TO REFLECT PRODUCTION DATA *
/**              BASE SIZE. *
/** ----- *
/** *
/** STEP1: DELETE THE OLD VERSION OF THE BACKUP, IF IT EXISTS. *
/**          DELETE THE OLD VERSION OF THE SORT FILE. IF IT EXISTS. *
/** STEP2: CREATE A SEQUENTIAL BACKUP OF THE PACKAGE DATABASE USING *
/**          STANDARD IDCAMS REPRO SERVICES.DATA ONLY. *
/** STEP3: SORT THE DATA, OMITTING '..DEL' TYPE RECORDS. *
/** STEP4: DELETE, DEFINE, AND REPRO THE PACKAGE DATABASE. *
/** *
/** ----- *
/** *
/** STEP1: DELETE THE OLD VERSION OF THE BACKUP, IF IT EXISTS. *
/** *
/** ----- *
//STEP1 EXEC PGM=IDCAMS
//SYSPRINT DD SYSOUT=*
//SYSIN DD *
        DELETE 'flhq1.PACKAGE.SEQ' PURGE
        DELETE 'flhq1.PACKAGE.SORT2' PURGE
        IF MAXCC <= 8 THEN DO
            SET MAXCC = 0
            SET LASTCC = 0
        END
```

continued on next page...

Figure 5. BZZSMJ05 (part 1)

```

/* ----- *
/* *
/* STEP2: CREATE A SEQUENTIAL BACKUP OF THE PACKAGE DATABASE USING *
/* STANDARD IDCAMS REPRO SERVICES. *
/* *
/* ----- *
//STEP2 EXEC PGM=IDCAMS,
// COND=(0,LT)
//OUTDD02 DD DSN=flhq1.PACKAGE.SEQ,DISP=(NEW,CATLG,DELETE),
// UNIT=dunit,SPACE=(CYL,(10,5),RLSE),
// DCB=(RECFM=VB,LRECL=724,BLKSIZE=6160)
//INDD02 DD DSN=BZZ.SBZZPKG.DATABASE.DATA,DISP=OLD,
// AMP='BUFNI=10,BUFND=10'
//SYSPRINT DD SYSOUT=*
//SYSIN DD *
REPRO IFILE(INDD02) OFILE(OUTDD02)
/*
/* ----- *
/* *
/* STEP3: SORT THE DATA AND DELETE ALL RECORDS THE QUALIFY FOR A *
/* LOGICAL DELETE. *
/* *
/* ----- *
//STEP3 EXEC PGM=SORT,
// COND=(0,LT)
//SORTIN DD DSN=flhq1.PACKAGE.SEQ,DISP=SHR
//SORTOUT DD DSN=flhq1.PACKAGE.SORT2,DISP=(NEW,CATLG,DELETE),
// UNIT=dunit,SPACE=(CYL,(10,5),RLSE),
// DCB=(RECFM=VB,LRECL=724,BLKSIZE=6160)
//SORTWK01 DD UNIT=tdisk,SPACE=(CYL,(25,25))
//SORTWK02 DD UNIT=tdisk,SPACE=(CYL,(25,25))
//SORTWK03 DD UNIT=tdisk,SPACE=(CYL,(25,25))
//SORTWK04 DD UNIT=tdisk,SPACE=(CYL,(25,25))
//SYSPRINT DD SYSOUT=*
//SYSOUT DD SYSOUT=*
//SYSIN DD *
SORT FIELDS=(5,80,CH,A)
OMIT COND=(85,2,CH,EQ,X'0000',&,87,3,CH,EQ,C'DEL')
RECORD TYPE=V,LENGTH=(724,,,80)
SUM FIELDS=NONE
/*

```

continued on next page...

Figure 6. BZZSMJ05 (part 2)

```

/* ----- *
/* *
/* STEP4: DELETE AND DEFINE THE CURRENT PACKAGE DATABASE, REPRO *
/* THE BACKUP INTO THE NEW FILE. *
/* *
/* ----- *
/* ----- *
/* *
/* DO NOT MODIFY THE VSAM PARAMETERS PROVIDED IN THIS JCL. DOING SO *
/* WILL PRODUCE UNEXPECTED RESULTS FROM THE BREEZE FOR SCLM *
/* APPLICATION. *
/* *
/* ----- *
//STEP4 EXEC PGM=IDCAMS,
// COND=(0,LT)
//SYSPRINT DD SYSOUT=*
//INDD01 DD DSN=flhq1.PACKAGE.SORT2,DISP=SHR
//SYSIN DD *
DELETE BZZ.SBZZPKG.DATABASE
DEFINE CLUSTER -
  (NAME('BZZ.SBZZPKG.DATABASE') -
   SPEED UNIQUE FREESPACE(30 30) -
   TRACKS(60 40) -
   VOLUMES(dvolser) -
   SHR(4 3) -
   KEYS(80 0) -
   RECORDSIZE(80 720)) -
  DATA (CISZ(16000)) -
  INDEX (CISZ(4096))
REPRO INFILE(INDD01) OUTDATASET('BZZ.SBZZPKG.DATABASE')
/*
/* ----- *
/* EXPAND THE INDEX TO 2 LEVELS *
/* ----- *
//STEP5 EXEC PGM=BZZVSM2L,PARM='BZZ.SBZZPKG.DATABASE'
//STEPLIB DD DSN=BZZ.SBZZLOAD,DISP=SHR
/*

```

Figure 7. BZZSMJ05 (part 3)

Checkpoint 2

At this point the demo database should be created and populated and the CIGINI initialization module should be created and stored in the product load library.

Task	Completed?
Allocated and populated the demo database?	
Reviewed the GRS or MIMS parameters?	
Built a CIGINI file that points to the demo database?	
Set up database backup and restore?	

Chapter 5. Steps to Checkpoint Three

Step 7. Customize the CTS Server JCL and Supporting Control Files

Step 7a. Modify BZZSMSRV

The Breeze TCP/IP server (also known as the CTS server) is an application specially designed to support the Breeze Web interface.

JCL to Invoke the Breeze CTS Server

The JCL member to invoke the CTS server (BZZSMSRV), shown in Figure 8 on page 20, is located in the SBZZJCL data set.

Attention: It is important that BZZSMSRV (as well as BZZSMPKG and BZZSMPRT) be reviewed for non-standard JCL issues.

Authorized Dataset Requirement

The CTS server must run from an authorized library due to RACROUTE calls made at logon time. If the target load library is not an authorized data set, then you must copy the target load library into the authorized library for server execution.

Timeout Parameter

Note, also, that this job MUST NOT TIME OUT. If the job is being run in batch, then you must specify a time parameter of TIME=NOLIMIT on the job card. This job can also be made a started task.

Sample JCL to Start the CTS Server

```
/** (JOB CARD)
/**-----
/**  NAME....: BZZMSRV                               7/20/01
/**  PURPOSE : JCL TO INVOKE THE BREEZE FOR SCLM SERVER.
/**
/**-----
/**
/** **                                     **
/** ** PRODUCT INSTALLATION/SETUP ISSUES **
/** **                                     **
/** THE FOLLOWING IS A LIST OF MODIFICATIONS REQUIRED DURING PRODUCT
/** INSTALLATION AND INITIAL SETUP:
/**
/** 1. INCLUDE A VALID JOB CARD
/** 2. MAKE SURE THE TCP LIBRARY IS INCLUDED IN THE
/**    STEPLIB (OR LINKLIST) AND THAT IT IS APF AUTHORIZED.
/** 3. INCLUDE THE THREE DD FILES NEEDED FOR BATCH
/**    JOB SUBMISSION:
/**      CIGSMPKG - BREEZE PACKAGE SHELL
/**      CIGSMPRT - BREEZE PRINT SERVICES SHELL
/**      CIGINRDR - INTERNAL READER
/*******
/** PRINT CIGINI VALUES
/*******
/**PRINTINI EXEC PGM=BZZNTINI
/**STEPLIB DD DSN=BZZ.SBZZLOAD,DISP=SHR <==BREEZE PRODUCT LIB
/**      DD DSN=TCPIP.SEZATCP,DISP=SHR
/**CIGPRINT DD SYSOUT=*
/*******
/** SERVER JCL
/*******
/**CIGLISTN EXEC PGM=BZZLISTN
/**STEPLIB DD DSN=BZZ.SBZZLOAD,DISP=SHR <==BREEZE PRODUCT LIB
/**      DD DSN=TCPIP.SEZATCP,DISP=SHR
/**-----
/**CIGJAVA DD DSN=BZZ.SBZZJAVA,DISP=SHR
/**CIGLOG DD SYSOUT=*
/**CIGOUT DD SYSOUT=*
/**-----
/**CIGINRDR DD SYSOUT=(A,INTRDR),DCB=(LRECL=80,BLKSIZE=800,RECFM=FB)
/**CIGSMPKG DD DSN=BZZ.SBZZJCL(BZZSMPKG),DISP=SHR
/**CIGSMPRT DD DSN=BZZ.SBZZJCL(BZZSMPRT),DISP=SHR
/**
/**-----
/** TO TURN ON INTERNAL TRACES UNCOMMENT THE FOLLOWING DD STATEMENTS
/** DO NOT RUN IN PRODUCTION WITH THE TRACES TURNED ON. THE TRACES
/** WILL CAUSE PERFORMANCE PROBLEMS.
/**-----
/**CIGXLSTN DD SYSOUT=*
/**CIGXSUBT DD SYSOUT=*
/**CIGFTP DD SYSOUT=*
/**-----
```

Figure 8. BZZMSRV

Step 7b. Review the BZZSMPKG and BZZSMPRT Browser JCL Shells

JCL for Job Submission from the Breeze CTS Server

There are two JCL shells pointed to by the BZZMSRV: BZZSMPKG and BZZSMPRT. These members are JCL shells that set certain controls used by Breeze

to submit SCLM print and batch package jobs. Please review the job card portion of the JCL members to verify that the job card information is correct for your installation.

Note also the following:

1. The job name **must** remain **JC1** . The CTS server builds the job name from browser data.
2. If your installation requires a password for email or TSO SEND, or if, for authorization reasons, you need to submit a job with a different userid, use the jobcard options in the **Alternative** section of the JCL listed below.
3. If the BZZSMPRT and BZZSMPKG JCL shells do not include a **//JC1
USERID,PASSWORD** directive, then the job submitted through the server may have to be owned by the server id. Please review the job submission security issues with your security administrator to see how security is set up for your installation. This will determine how the jobcard on the BZZSMPRT and BZZSMPKG needs to be defined.

BZZSMPKG

The following BZZSMPKG JCL shell is located in the SBZZJCL target library.

```
//JC1      JOB (ACCT#), 'NAME', CLASS=A, REGION=4096K,
//          MSGCLASS=H, MSGLEVEL=(1,1),
//JC1_USER, PASSWORD
//*-----
//*  NAME:      BZZSMPKG
//*  PURPOSE:  JCL TO SUBMIT VOTES FOR BREEZE FOR SCLM FROM BROWSER.
//*-----
//*  JOB CARD USAGE NOTE:
//*  //JC1 IS REPLACED WITH USERID PLUS A J
//*  //JC1_USER OR //JC1_USER,PASSWORD MUST BE THE LAST JOB STATEMENT.
//*  THESE DIRECTIVES WILL BE REPLACED WITH // USER=USERID OR
//*  // USER=USERID,PASSWORD.
//*-----
//*
//* **
//* ** PRODUCT INSTALLATION/SETUP ISSUES **
//* **
//* THE FOLLOWING IS A LIST OF MODIFICATIONS REQUIRED DURING PRODUCT
//* INSTALLATION AND INITIAL SETUP:
//*
//* 1. IMPORTANT!! LEAVE JOB NAME AS //JC1. SERVER EXPECTING
//*    TO BUILD JOB NAME FROM BROWSER DATA.
//* 2. IMPORTANT!! THE //CIGIN DD MUST REMAIN AN INSTREAM
//*    DD CARD. THE SERVER WILL BE BUILDING THE SYNTAX AND
//*    INSERTING.
//* 3. DETERMINE WHICH JOBCARD YOUR SITE WILL REQUIRE
//* 4. INCLUDE VALID JOB CARD INFORMATION ( ACCT#, CLASS, ETC)
//* 5. CHANGE THE STEPLIB AND CONLIB TO POINT TO THE
//*    CURRENT BREEZE PRODUCT LIBRARIES AT THE YOUR INSTALLATION.
//*
//*****
//* BATCH PACKAGE JCL SHELL FOR BROWSER.
//* POINT TO THIS MEMBER IN THE BZZSMSRV SERVER JCL ( DD=CIGSMPKG)
//*****
//VOTE     EXEC PGM=BZZFEXEC, PARM='BZZSAPV1', DYNAMNBR=1500
//STEPLIB DD DSN=BZZ.SBZZLOAD, DISP=SHR <==BREEZE PRODUCT LIB
//SYSTEM  DD SYSOUT=*
//SYSPRINT DD SYSOUT=*
//*****
//* PACKAGE SCL REQUEST DATASET.
//* INSTREAM DATA BUILT BY THE SERVER. DO NOT CHANGE DD CIGIN.
//*****
//CIGIN DD *
/*
//CIGLOG  DD  SYSOUT=*
//CIGRPT  DD  SYSOUT=*
```

Figure 9. BZZSMPKG

BZZSMPRT

The following BZZSMPRT JCL shell is located in the SBZZJCL target library. Note that this member is actually the standard SCLM batch JCL plus formatting and file return steps.

Because this is SCLM batch JCL, the **CMD0** step requires knowledge of the full suite of ISPF/SCLM data sets typically included in TSO batch. These data sets should have been identified in “Step 2. Implement Site Standards” on page 6 as the ISPF/SCLM site specific data set names. Please refer to “ISPF/SCLM Data Set Names” on page 6 for this information.

BZZSMPRT

```
//JC1      JOB (ACCT#), 'NAME', CLASS=A, REGION=4096K,
//          MSGCLASS=H, MSGLEVEL=(1,1),
//JC1_USER, PASSWORD
//* -----
//* NAME:    BZZSMPRT
//* PURPOSE: JCL TO SUBMIT PRINT, CHANGES OR ACCOUNTING REQUESTS.
//*          RETURNS A FILE TO THE SERVER, WHICH IS WAITING FOR THE
//*          FILE FOR A PREDETERMINED AMOUNT OF TIME.
//* -----
//* JOB CARD USAGE NOTE:
//* //JC1 IS REPLACED WITH USERID PLUS A J
//* //JC1_USER OR //JC1_USER,PASSWORD MUST BE THE LAST JOB STATEMENT.
//* THESE DIRECTIVES WILL BE REPLACED WITH // USER=USERID OR
//* // USER=USERID,PASSWORD.
//* -----
//*
//* **
//* ** PRODUCT INSTALLATION/SETUP ISSUES **
//* **
//* THE FOLLOWING IS A LIST OF MODIFICATIONS REQUIRED DURING PRODUCT
//* INSTALLATION AND INITIAL SETUP:
//*
//* 1. IMPORTANT!! LEAVE JOB NAME AS //JC1. SERVER EXPECTING
//*    TO BUILD JOB NAME FROM BROWSER DATA.
//* 2. MODIFY THE DIRECTIVE HLQ1=FLQH1 TO TELL THE SERVER THE
//*    HIGH LEVEL QUALIFIER FOR TEMPORARY FILES. THE SERVER WILL
//*    GENERATE THE ACTUAL DATASET USING THE FOLLOWING NAMING
//*    STANDARD: FLHQ1.USERID.DYMMDD.THHMM
//*    9/12/2001 &&SYSUID IS NOW SUPPORTED AS THE FIRST NODE.
//*
//* 3. IMPORTANT!! THE VARIOUS PROC OVERRIDE STATEMENTS AT THE
//*    END OF THIS MEMBER MUST REMAIN IN THE ORDER THAT THEY
//*    APPEAR AND MUST RETAIN THEIR NAMES AS GIVEN. THESE SCLM
//*    INPUT STREAMS ARE CREATED BY THE SERVER IN RESPONSE TO
//*    THE REQUEST FROM THE BROWSER.
//* 4. INCLUDE VALID JOB CARD INFORMATION ( ACCT#, CLASS, ETC)
//* 5. MODIFY UNIT=TDISK AS PER WORKSHEET.
//* 6. MODIFY UNIT=DUNIT AS PER WORKSHEET.
//* 7. VERIFY THAT THE CMD0 STEPLIB HAS BOTH THE
//*    CURRENT ISPF/SCLM AND BREEZE PRODUCT LIBRARIES.
//* 8. THIS JCL REQUIRES THE FULL SUITE OF ISPF/SCLM
//*    LIBRARIES TO BE INCLUDED IN THE CMD0 STEP. PLEASE REVIEW
//*    THE LIBRARY NAMES WITH THE PERSON HOW MAINTAINS THE
//*    LOGON PROC FOR SCLM ACCESS. THE CURRENT NAMES LISTED
//*    MAY NOT BE VALID FOR YOUR ENVIRONMENT.
//*
//*****
//*
//*****
//BRSCLM PROC
//GENERO  EXEC PGM=IEBGENER
//SYSPRINT DD SYSOUT=*
//SYSIN   DD DUMMY
//SYSUT1  DD DUMMY
//SYSUT2  DD DSN=&&CLIST0(TEMPNAME), UNIT=tdisk,
//          SPACE=(TRK,(1,1,2),RLSE),
//          DISP=(NEW,PASS),
//          DCB=(LRECL=80, BLKSIZE=20400, DSORG=PO, RECFM=FB)
//*****
//CMD0    EXEC PGM=IKJEFT01, REGION=4096K, TIME=1439, DYNAMNBR=200
//*****
//* STEPLIB LIBRARIES (BREEZE AND SCLM PRODUCTS)
//*****
//STEPLIB DD DSN=BZZ.SBZZLOAD, DISP=SHR <==BREEZE PRODUCT LIB
//          DD DSN=ISP.SISPLPA, DISP=SHR
//*
```

```

//*****
//* ISPF LIBRARIES
//*****
//ISPLIB DD DSN=BZZ.SBZZMENU,DISP=SHR
//      DD DSN=ISP.SISPMENU,DISP=SHR
//*
//ISPSLIB DD DSN=BZZ.SBZZSENU,DISP=SHR
//      DD DSN=ISP.SISPSENU,DISP=SHR
//      DD DSN=ISP.SISPSLIB,DISP=SHR
//*
//ISPPLIB DD DSN=BZZ.SBZZPENU,DISP=SHR
//      DD DSN=ISP.SISPPENU,DISP=SHR
//*
//ISPTLIB DD UNIT=VIO,DISP=(NEW,PASS),SPACE=(CYL,(1,1,5)),
//          DCB=(LRECL=80,BLKSIZE=19040,DSORG=PO,RECFM=FB),
//          DSN=          TEMPORARY TABLE LIBRARY
//      DD DSN=ISP.SISPTENU,DISP=SHR
//*
//ISPTABL DD UNIT=VIO,DISP=(NEW,PASS),SPACE=(CYL,(1,1,5)),
//          DCB=(LRECL=80,BLKSIZE=19040,DSORG=PO,RECFM=FB),
//          DSN=          TEMPORARY TABLE LIBRARY
//*
//ISPPROF DD UNIT=VIO,DISP=(NEW,PASS),SPACE=(CYL,(1,1,5)),
//          DCB=(LRECL=80,BLKSIZE=19040,DSORG=PO,RECFM=FB),
//          DSN=          TEMPORARY TABLE LIBRARY
//*
//ISPLOG DD SYSOUT=*,
//          DCB=(LRECL=120,BLKSIZE=2400,DSORG=PS,RECFM=FB)
//*
//ISPECTL1 DD DISP=NEW,UNIT=VIO,SPACE=(CYL,(1,1)),
//           DCB=(LRECL=80,BLKSIZE=800,RECFM=FB)  TEMPORARY FILE
//SYSTEM DD SYSOUT=*
//CIGVTRAX DD SYSOUT=*
//CIGTRACE DD DUMMY
//CIGLOG DD SYSOUT=*
//*
//*****
//* TEMPORARY CLIST CONTAINING COMMAND TO BE EXECUTED
//*****
//SYSPROC DD DSN=&&CLIST0,DISP=(OLD,DELETE)
//      DD DSN=BZZ.SBZZCLIB,DISP=SHR
//      DD DSN=ISP.SISPCLIB,DISP=SHR          CLIST LIBRARY OW01230
//      DD DSN=SYS1.CLIST,DISP=SHR          CLIST LIBRARY OW01230
//*
//*****
//* BUILD USER EXIT OUTPUT FILE
//*****
//BLDEXIT DD DUMMY
//*****
//* OUTPUT CARD
//*****
//BLDREPT DD DUMMY
//BLDLIST DD DUMMY
//BLDMSG DD DUMMY
//SYSPRINT DD SYSOUT=(*)
//*****
//* NLS TABLE AND TRANSLATION TABLE NAME FILE
//*****
//ZFLMDD DD DUMMY
//*****
//* SCLMCMD FILES
//*****
//FLMMSG DD SYSOUT=(*)
//*****
//* TSO OUTPUT FILE
//*****
//SYSTSPT DD SYSOUT=(*)

```

```

//*****
//* TSO INPUT FILE
//*****
//SYSTSIN DD DUMMY
//*****
//* SUPERC OR IEBCOPY INPUT FILES
//*****
//NEWDD DD DUMMY
//OLDDD DD DUMMY
//SYSIN DD DUMMY
//*****
//* DESIGNATED OUTPUT &&DSN NAME.
//* THE ACTUAL DDNAME CHANGES WITH FUNCTION.
//*****
//CIGTEMP DD DSN=&&CIGTEMP,
// DISP=(NEW,PASS),
// UNIT=TDISK,SPACE=(TRK,(45,45))
//*****
//* GENERAL FORMAT STEP
//* PGM NAME IS DYNAMICALLY GENERATED
//*****
//FORMAT EXEC PGM=BZZFEXEC,PARM=BZZFBR14
//STEPLIB DD DSN=BZZ.SBZZLOAD,DISP=SHR
//CIGIN DD DUMMY
//SYSIN DD DSN=&&CIGTEMP,DISP=(OLD,PASS)
//*****
//* THE OUTPUT FILE NAME MUST BE CIGPRINT.
//* THE DATASET NAME WILL BE BUILT DYNAMICALLY BASED ON USERID,
//* DATE AND TIME. THIS FILE DEFINITION MUST BE MODELED AFTER THE
//* FOLLOWING JCL. THE HLQ1= PARAMETER MUST BE ON THE FIRST LINE OF
//* CIGPRINT DD AND IT MUST BE THE ONLY PARAMETER ON THE LINE.
//* THE GENERATED NAME OF THE FILE WILL BE:
//* FLHQ1.USERID.DYMMDD.THHMM
//*****
//* EFFECTIVE 9/12/2001 HLQ1=&&SYSUID IS SUPPORTED. THIS USAGE WILL
//* CAUSE THE SERVER TO USER THE USERID AS THE FIRST NODE OF THE DSN.
//*****
//CIGPRINT DD HLQ1=flhq1
// DISP=(NEW,CATLG,KEEP),
// UNIT=dunit,SPACE=(TRK,(45,45)),
// DCB=(LRECL=133,BLKSIZE=26600,RECFM=FB)
//*
//*****
//* IF THE RETURN CODE IS HIGHER THAN ZERO, THEN SEND ERROR MESSAGES.
//* THE SYSOUT LINE BELOW WILL BE DISGARDED.
//* THE SYSOUT LINE WILL BE BUILT FROM THE DATASET NAME ALREADY
//* GENERATED IN A PREVIOUS STEP.
//*****
//IFERR IF (CMD0.RC > 4 | FORMAT.RC > 0) THEN
//ERROR EXEC PGM=LISTFILE
//STEPLIB DD DSN=BZZ.SBZZLOAD,DISP=SHR <==BREEZE PRODUCT LIB
//SYSIN DD DSN=&&CIGTEMP,DISP=(OLD,DELETE)
//SYSOUT DD DSN=*.FORMAT.CIGPRINT,
// DISP=MOD
//ENDIFERR ENDIF
//*
//BRSCLM PEND
//BREEZE EXEC PROC=BRSCLM
//*
//* THIS IS THE COMMAND INPUT THAT CREATES %TEMPNAME.
//* FIRST PORTION IS DYNAMICALLY CREATED BY SERVER.
//*
//GENER0.SYSUT1 DD *
SET ZISPFRC = &LASTCC ISPEXEC VPUT (ZISPFRC) SHARED
/*
//*
//* THIS IS ADDITIONAL SYSIN TYPE INPUT DEPENDENT UPON REQUEST TYPE.

```

```

/*
//CMD0.ZFLMDD DD *
      ZFLMNLST=FLMNLENU ZFLMTRMT=ISR3278 ZDATEF=YY/MM/DD
/*
//CMD0.SYSTSIN DD *
      ISPSTART CMD(%TEMPNAME) TRACEX
/*
//CMD0.SYSIN DD *
/*
/*
/* THIS IS ADDITIONAL CIGIN TYPE INPUT DEPENDENT UPON REQUEST TYPE.
/*
//FORMAT.CIGIN DD *
/*
/*

```

Step 7c. Configure the Java CONTROL Member-- BZZ\$CNTL

The Breeze product needs to know the port number to use for all communications between the server and browser, information that is completely determined by your systems personnel. Once you have this information, it must be added to the BZZ\$CNTL member in *BZZ.SBZZJAVA*.

The following member (BZZ\$CNTL) can be found in the SBZZJCL target library. Change the port number to reflect the one used by your installation and save BZZ\$CNTL to BZZ.SBZZJAVA.

```
PORT 1799
```

Note: Note again that the port number must be higher than 1024, as port numbers lower than 1024 are reserved for internal system services. If the port number in BZZ\$CNTL is incorrect, there will be an error message in the CIGLISTN trace dd stating that the communication path cannot be established on the port provided.

It is recommended that the Breeze port be reserved in TCP/IP for **Breeze use only**. Port reservation is generally handled by the network systems programmer and is implemented by updating the TCPIP.PROFILE data set.

Additionally, the port number provided in the BZZ\$CNTL sample member is only an example; the number that you use will likely be different.

Step 8. CTS Server Installation Verification

To test the CTS server:

Start the Server

1. Submit the BZZSMSRV job.
2. View the CIGOUT DD in the job output to verify that the port number listed matches the one you coded in "Step 7c. Configure the Java CONTROL Member-- BZZ\$CNTL". It should look like the output below.

```

20:59:37 FST0001I P390
20:59:37 FST0001I WE ARE USING THE FOLLOWING IP NUMBER 999,999,999,999
20:59:37 FST0001I WE WILL BE LISTENING ON PORT 00001799

```

Shut Down the Server

To quiesce the server job, enter one of the following commands (replace *cts-job-name* with your job name):

If entered on an MVS console:

| `F cts-job-name,X`

If entered via a console interface, such as SDSF:

| `/F cts-job-name,X`

Attention: Because the CTS server task utilizes the TCP/IP stack and a cancel does not always clean up storage, it is recommended that the MVS console command method be used over simply canceling the job. Issuing the console command will allow the CTS server job to end cleanly.

Restart the Server

Re-submit the server JCL (BZZSMSRV) for the next test.

Database Considerations

When the CTS server task is started, the Breeze package database is initialized and allocated to the CTS server task.

Note: Note that while the CTS server is running, users will not be able to delete, define, or reorg the database.

Checkpoint 3

At this point, you should have successfully completed the following tasks:

Task	Completed?
Modified the BZZSMSRV JCL as per instructions?	
Modified the BZZSMPKG and BZZSMPRT JCL shells as per instructions?	
Edited BZZ\$CNTL to reflect correct port number?	
Submitted the CTS server JCL BZZSMSRV?	
Reviewed the CIGOUT file showing the port # and verifying that this is port # you expected?	
Issued a Quiesce of the server to test command and clean up?	
Resubmitted the server for the next test?	

Chapter 6. Steps to Checkpoint Four

Step 9. Customizing and Testing the Breeze Web interface

The Breeze Web interface allows users to view and vote on packages over the Web. The interface consists of a single HTML file and a Java applet. The HTML file acts as a container for the applet, allowing it to run inside a Web browser. To use the Breeze Web interface, users point their Web browsers to the HTML file at the Web address of your CTS server. The HTML file contains an `<applet>` tag that causes the browser to download the applet from your CTS server, and run the applet inside the browser.

In this step, you modify the `<applet>` tag in the sample HTML file (member `BZZHTML` in `SBZZJCL`) to refer to the Web address of your CTS server. Then you copy the modified HTML file to `SBZZJAVA`, renaming it to `BRSCLM`. Finally, you test the Breeze Web interface by pointing your browser to `http://ip-addr:port/brsc1m.html`, logging in and viewing a list of packages in the sample Breeze package database.

BZZHTML

A sample HTML file (`BZZHTML`) is included in the `SBZZJCL` target library. The only customization required is that you need to add your installation's host IP address and CTS server port number to the archive and codebase attributes of the `<applet>` tag, as shown below in bold.

Attention: Please review all HTML comments prior to making any changes.

```

<!doctype html public "-//w3c//dtd html 4.0 transitional//en">
<html>
<head>
  <meta http-equiv="Content-Type" content="text/html; charset=iso-8859-1">
  <meta name="GENERATOR" content="Mozilla/4.6 [en] (Win95; I)">
  <title>IBM Breeze for SCLM for OS/390</title>
</head>
<BODY BGCOLOR="#99CCFF">
<CENTER>
<! >
<! ----- >
<! OW50793 RMCC - changes to internal comments, as conversion >
<! to ASCII is no longer required. >
<! >
<! Modify ONLY the archive and codebase lines below. >
<! ----- >
<! >
<! 1. Insert your ip-addr:port in the two commands. >
<! 2. Copy this BZZHTML member to the BZZ.SBZZJAVA target library >
<! with a new name of BRSCLM. >
<! 3. Please check that BZZ.SBZZJAVA is the JAVA control DSN >
<! pointed to by the CIGINI file. >
<! ----- >
<body>
<applet CODE=Brscml.class
  archive="http://ip-addr:port/bzzibmja.jar"
  codebase="http://ip-addr:port/"
  WIDTH=700 HEIGHT=500></applet>
</body>
</html>

```

Figure 10. BZZHTML

After you have modified BZZHTML, you can either:

- Use the BZZSMJX3 member of SBZZJCL (below) to convert it into ASCII format and save it as member BRSCLM in SBZZJAVA.
- or
- Copy the modified BZZHTML member directly into SBZZJAVA, renaming it as member BRSCLM, without translating it into ASCII format.

The CTS server makes the BRSCLM member of SBZZJAVA available to Web browsers as brscml.html (that is, the member name, plus the file extension “.html”).

Modify BZZSMJX3

Modify the JCL as documented in BZZSMJX3 and submit the job. The SYSPRINT file will contain any information messages and a trace of lines converted from EBCDIC to ASCII.

```

/**
/** (JOB CARD)
/**
/** ----- *
/** NAME: BZZSMJX3 *
/** PURPOSE: TRANSLATE BRZHTML TO BRSCLM.HTML IN ASCII. *
/** ----- *
/**
/** THE PURPOSE OF THIS JCL IS TO TRANSLATE THE BRZHTML FILES *
/** CONTAINING SITE SPECIFIC MODIFICATIONS INTO THE REQUIRED *
/** NAMED BRSCLM.HTML IN ASCII FORMAT. *
/**
/** REQUIRED JCL MODIFICATION: *
/** 1) INCLUDE A JOB CARD *
/** 2) MAKE SURE THAT THE SYSOUT DD NAME IS POINTING AT THE JAVA *
/** CONTROL DATASET IN YOUR CIGINI FILE. *
/** 3) DO NOT CHANGE THE NAME OF THE MEMBER. IT IS REQUIRED TO BE *
/** BRSCLM. *
/** 4) MAKE SURE THE TCP LIBRARY IS INCLUDED IN THE STEPLIB *
/**
/** *****
/** JCL FOR BRSCLM.HTML EBCDIC TO ASCII TRANSLATION.
/** *****
//ETOA EXEC PGM=BZZBETO
//STEPLIB DD DISP=SHR,DSN=BZZ.SBZZLOAD <==BREEZE PRODUCT LIB
// DD DSN=TCPIP.SEZATCP,DISP=SHR
//SYSIN DD DSN=BZZ.SBZZJCL(BZZHTML),DISP=SHR
//SYSOUT DD DSN=BZZ.SBZZJAVA(BRSCLM),
// DISP=SHR
//SYSPRINT DD SYSOUT=*

```

Figure 11. BZZSMJX3

Test brsc1m.html

After creating the BRSCLM member in SBZZJAVA, point your Web browser to the brsc1m.html file at your host IP address and CTS server port number:

<http://ip-addr:port/brsc1m.html>

The brsc1m.html file downloads the Java applet and displays it inside your Web browser window. Depending on the speed of your network connection, it may take a few seconds for the Java applet to download from the host.

Logging into Breeze and Testing Minimum Functions

When the Java applet has loaded, it displays a login prompt:

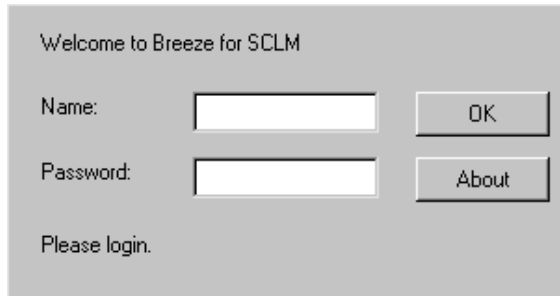


Figure 12. Breeze login prompt

Enter your TSO user ID and password, then click OK. The applet displays the main panel:

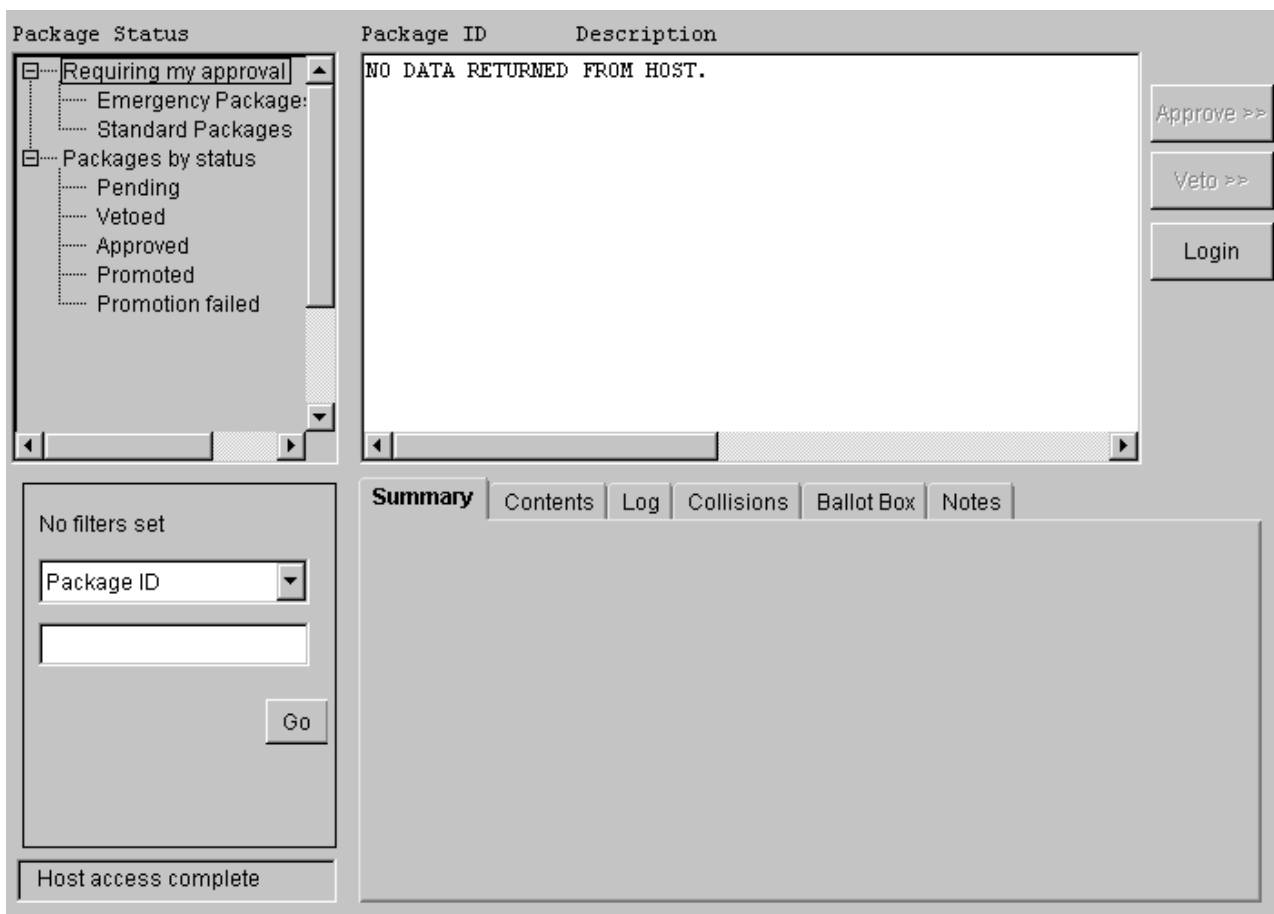


Figure 13. Breeze main panel

By default, when you login, the main panel displays a list of the packages that require your approval. However, because you have not yet been identified to Breeze as an approver, there are no packages for you to approve, so the main panel displays the message **NO DATA RETURNED FROM HOST**.

To test that the Java applet can access the package database:

1. Click **Packages by Status** at the top left of the main panel. The main panel should display a list of the packages in the sample database.

2. Click one of the packages in the list.
3. Click the Contents tab (one of the row of tabs near the center of the main panel). This tab displays a list of the source members in the selected package.
4. Click one of the source members in the Contents tab. A dialog with several buttons appears, offering information about the source member.
5. Click the **Browse** button. A new browser window appears, displaying the contents of the selected source member.

To finish testing, close both browser windows.

How will Your End-Users Access Breeze?

To enable users to access the Breeze Web interface, you can either send them the Web address as a link in an e-mail, or you can use Breeze to send them an e-mail containing this link when there is a package that requires their approval, as described in “Step 13. Approver Notification for Breeze Applet” on page 45.

Checkpoint 4

At this point, you should have successfully completed the following tasks:

Task	Completed?
Modified the BZZHTML member and either: <ul style="list-style-type: none">• Used BZZSMJX3 to translate it to ASCII format and copy it to SBZZJCL, renamed as BRSCLM.or• Copied it directly to SBZZJCL and renamed it as BRSCLM yourself (without translating it to ASCII)?	
Loaded the Breeze applet, by pointing your Web browser to the brsclm.html file on the host?	
Logged into the applet, using your host TSO user ID and password?	
Displayed a list of packages on the main panel?	
Used the Contents tab to browse a source member?	
Exited successfully from the applet?	

Chapter 7. Steps to Checkpoint Five

Step 10. Package Detail Report IVP

BZZSMJ06—Batch Reporting Utility

In this step you will run a report to ensure that Breeze is properly installed and that the CIGINI has been configured correctly.

Modify BZZSMJ06

SBZZJCL member BZZSMJ06, shown below, will execute report commands to verify the successful implementation of the Breeze product. Modify and submit this JCL to produce the installation verification report shown in Figure 15 on page 36.

```
/**(JOB CARD)
/** -----*
/** NAME:      BZZSMJ06                               *
/** PURPOSE:   JCL FOR BREEZE PACKAGE REPORTING.      *
/**           THIS JCL WILL EXECUTE THE BATCH PACKAGE *
/**           DETAIL REPORT.                          *
/** -----*
/** TO USE THIS JCL, YOU MUST:                        *
/**           1) INSERT A VALID JOB CARD WITH VALID  *
/**           CLASS AND REGION=0M                     *
/** -----*
//REPORT EXEC PGM=BZZS0000
//STEPLIB DD DSN=BZZ.SBZZLOAD,DISP=SHR <==BREEZE PRODUCT LIB
//CIGLOG  DD SYSOUT=*
//CIGRPT  DD SYSOUT=*
//CIGIN   DD *
* -----*
* SAMPLE BREEZE FOR SCLM SYNTAX.                      *
* FOR MORE SYNTAX OPTIONS, REVIEW THE REPORT UTILITY *
* SYNTAX IN THE BREEZE FOR SCLM ADMIN GUIDE.         *
* -----*
REPORT PACKAGES 'DEMO*'
          OPTIONS ALL .
```

Figure 14. BZZSMJ06

The following syntax, which can be found in-stream in the SBZZJCL target library as member BZZSMJ06, will create a Breeze Package Detail Report. Output from BZZSMJ06 is shown in Figure 15 on page 36.

Syntax for IVP Report:

```
* -----*
* SAMPLE INPUT FOR BREEZE FOR SCLM IVP JCL JOB.      *
* FOR MORE SYNTAX OPTIONS, REVIEW THE REPORT UTILITY *
* SYNTAX IN THE BREEZE FOR SCLM ADMIN GUIDE.         *
* -----*
REPORT PACKAGES 'DEMO*'
          OPTIONS ALL .
```

Sample Report Output: The sample report is shown below.

```

1DATE 00/02/03 TIME 13:59:35    B R E E Z E   F O R   S C L M, RELEASE 1.1
                                P A C K A G E   D E T A I L   R E P O R T
FOR PACKAGE: DEMOPK1           COMMENT: BREEZE FOR SCLM DEMO DATA 1
STATUS INFORMATION              : APPROVED
EXECUTION WINDOW               : 00/02/03 12:29 THROUGH 02/12/31 23:59
LAST UPDATE INFORMATION        : P390C$ 00/02/03 12:29
LAST BUILD INFORMATION         : P390C$ 00/02/03 12:29
LAST PROMOTE INFORMATION       :
ACTUAL CONTENT OF PACKAGE:
  X MEMBER    PROJECT    GROUP    TYPE    LANGUAGE
   TEST01    SCLMTEST    DEV1    SOURCE  TEXT
           SCLMTEST    TEST    SOURCE  TEXT
   TEST02    SCLMTEST    DEV1    SOURCE  TEXT
           SCLMTEST    TEST    SOURCE  TEXT
APPROVERS CURRENTLY ASSIGNED:
  APPROVER GROUP    QUORUM    STATUS
OPSGUYS             01      APPROVED
APPROVER GROUP    USER    DATE    TIME    DECISION
OPSGUYS             P390B    00/02/03 01:30    FOR
OPSGUYS             P390L    00/02/03 01:50    FOR
LOG RECORDS RECORDED:
  ACTIVITY    USER    DATE    TIME    RC
BUILD        P390C$ 00/02/03 12:29 00
APPROVE      P390B 00/02/03 01:30 00
APPROVE      P390L 00/02/03 01:45 00
CURRENT NOTES:
  THIS IS FOR THE BREEZE FOR SCLM IVP JOBS.

```

Figure 15. Package Detail Report

Checkpoint 5

At this point, the following tasks should have been successfully completed.

Task	Completed?
Ran the detail report using JCL provided?	
Reviewed the report output?	

Chapter 8. Steps to Checkpoint Six

Step 11. Modify the SCLM Log-On Proc to Include Breeze ISPF Component Libraries

The Breeze ISPF component libraries must be included in the same logon procedure that is used to access SCLM. This could also be a startup CLIST.

The Breeze components are invoked on behalf of the SCLM application and *do not* execute outside of this environment. Please see the systems personnel responsible for maintaining the SCLM logon proc. The following datasets must be included to ensure that foreground SCLM access includes the product exits and ISPF application pieces.

Data Set Names	DDname
BZZ.SBZZLOAD	Steplib or linklist
BZZ.SBZZMENU	ISPMLIB
BZZ.SBZZPENU	ISPPLIB
BZZ.SBZZSENU	ISPSLIB
BZZ.SBZZCLIB	SYSPROC or ISRCLIB

Additionally, the following work files are required by Breeze. Please ensure that these files are allocated to the logon proc.

```
/*-----  
/* BREEZE WORK FILES  
/*-----  
//CIGLOG DD SYSOUT=*  
//CIGLOG0 DD DUMMY  
//CIGLOG1 DD DSN=&&CIGLOG1,  
// DISP=NEW,UNIT=SYSALLDA,SPACE=(CYL,(1,1)),  
// DCB=(LRECL=132,BLKSIZE=13200,RECFM=FB)  
//CIGLOG2 DD DSN=&&CIGLOG2,  
// DISP=NEW,UNIT=SYSALLDA,SPACE=(CYL,(1,1)),  
// DCB=(LRECL=132,BLKSIZE=13200,RECFM=FB)  
//CIGLOG3 DD DSN=&&CIGLOG3,  
// DISP=NEW,UNIT=SYSALLDA,SPACE=(CYL,(1,1)),  
// DCB=(LRECL=132,BLKSIZE=13200,RECFM=FB)
```

Step 12. Connect the Breeze product to SCLM

Step 12a. Review and Modify IBM Skeleton FLMLIBS

Modify Skeleton FLMLIBS

The primary skeleton that requires modification in this step is actually an IBM skeleton, FLMLIBS, a sample of which is shown below. A copy of FLMLIBS, called BZZFLMSK, is included in the BZZSENU target library.

Note: Note that this skeleton might already be in use at your installation. If it is, you will need to incorporate the modifications required for Breeze with your current FLMLIBS skeleton.

As indicated below in the sample skeleton (included on the installation tape) to use this skeleton, you must do the following:

1. Review the naming conventions of your ISPF libraries. FLMLIBS reflects default naming standards and should be modified to meet your installation's requirements.
2. Unless they are linklisted, ensure that the STEPLIB points to your installation's ISPF load libraries.
3. Ensure that the STEPLIB also points to the product libraries that contain the BZZFEXEC and CIGINI modules.
4. Rename the member BZZFLMSK to the required SCLM skeleton name of FLMLIBS.

Note: You should review this step with your ISPF system programmer.

IBM Skeleton FLMLIBS

```

)CM NAME:      FLMLIBS (SHIPPED AS BZZFLMSK)                2000/10/10
)CM PURPOSE:  SCLM BATCH INCLUDE SKELETON FOR ALL BATCH PROCESSING.
)CM NOTES   : THIS IS ACTUALLY AN IBM SKELETON FOR THE SCLM PRODUCT.
)CM          AN EXAMPLE OF THE DEFAULT PLUS OUR REQUIRED MODS.
)CM -----*
)CM NAME:      FLMLIBS (SHIPPED AS BZZFLMSK)                *
)CM PURPOSE:  SCLM BATCH INCLUDE SKELETON FOR ALL BATCH PROCESSING. *
)CM NOTES   : THIS IS ACTUALLY AN IBM SKELETON FOR THE SCLM PRODUCT. *
)CM          TO BE USED AS AN EXAMPLE OF THE STANDARD PLUS BREEZE *
)CM          FOR SCLM REQUIRED MODIFICATIONS.                    *
)CM -----*
)CM TO USE THIS SKELETON, YOU MUST:                          *
)CM 1) REVIEW THE FLMLIBS SKELETON CURRENTLY INSTALLED.      *
)CM    YOU MAY NEED TO INCORPORATE THESE CHANGES WITH THE *
)CM    CURRENT LEVEL OF CHANGES.                            *
)CM 2) REVIEW THE NAMING CONVENTIONS OF THE ISPF LIBRARIES. *
)CM    THIS SKELETON REFLECTS DEFAULT NAMING STANDARDS.     *
)CM    PLEASE MODIFY TO MEET YOUR INSTALLATION STANDARDS.   *
)CM 3) MAKE SURE THAT THE STEPLIB POINTS TO YOUR INSTALLATION *
)CM    ISPF LOAD LIBRARIES, UNLESS THEY ARE LINKLISTED.     *
)CM    REVIEW THIS WITH YOUR ISPF SYSTEM PROGRAMMER.        *
)CM 4) MAKE SURE THAT THE STEPLIB POINTS TO THE BREEZE PRODUCT*
)CM    LIBRARIES THAT CONTAIN THE BZZFEXEC AND BZZINI MODULES.*
)CM 5) CHANGE THE UNIT=TDISK TO THE APPROPRIATE UNIT        *
)CM    NAME.                                                  *
)CM -----*
)CM
)CM THIS DEFINES THE STEPLIB AND ISPF LIBRARIES
)CM TO BE USED DURING SCLM BATCH OPERATIONS
)CM
)CM BE SURE TO INCLUDE THE LOAD LIBRARIES CONTAINING ISPF.
)CM

)CM                                     BEGIN M45P1452
)CM IF YOU ARE RUNNING ADA AND NEED THE ADA RUNTIME LIBRARIES,
)CM THEN ADD THE RUNTIME LIBRARY TO THE STEPLIB DD:
)CM //          DD DSN=ADA110.EVHLOAD,DISP=SHR
)CM                                     END M45P1452
)CM
)CM FOR CSP/370AD 4.1:
)CM *** UN-COMMENT OUT THE FOLLOWING TO INCLUDE CSP/370AD 4.1
)CM )IM FLMCSPLB
)CM
)CM ALSO, PERFORM THE FOLLOWING ACTIVITIES (BY UN-COMMENTING THE
)CM LINES WITH )CM //):
)CM + ADD DATASET TO SYSPROC AND PROCLIB:
)CM //          DD DSN=CSP410.EZECLST,DISP=SHR
)CM + ADD DATASETS TO STEPLIB AND ISPLLIB:

```

```

)CM //          DD DISP=SHR,DSN=CSP410.SEZELMD
)CM //          DD DISP=SHR,DSN=CRS210.SELALMD
)CM + ADD DATASET TO ISPLIB AND ISPLIB:
)CM //          DD DISP=SHR,DSN=CSP410.SEZEPNL
//*
//*****
//* STEPLIB LIBRARIES
//*****
//STEPLIB DD DSN=BZZ.SBZZLOAD,DISP=SHR
//          DD DSN=ISP.SISPLPA,DISP=SHR
//          DD DSN=ISP.SISPLOAD,DISP=SHR
//          DD DSN=ISP.SISPSASC,DISP=SHR
//*
//*****
//* ISPF LIBRARIES
//*****
//ISPLIB DD DSN=BZZ.SBZZMENU,DISP=SHR
//          DD DSN=ISP.SISPMENU,DISP=SHR
//*
//ISPSLIB DD DSN=BZZ.SBZZSENU,DISP=SHR
//          DD DSN=ISP.SISPSENU,DISP=SHR
//          DD DSN=ISP.SISPSLIB,DISP=SHR
//*
//ISPLLIB DD DSN=BZZ.SBZZPENU,DISP=SHR
//          DD DSN=ISP.SISPPENU,DISP=SHR
//*
//ISPTLIB DD UNIT=&VIOUNIT.,DISP=(NEW,PASS),SPACE=(CYL,(1,1,5)),
//          DCB=(LRECL=80,BLKSIZE=19040,DSORG=PO,RECFM=FB),
//          DSN=&TABLESP          TEMPORARY TABLE LIBRARY
//          DD DSN=ISP.SISPTENU,DISP=SHR
//*
//ISPTABL DD UNIT=&VIOUNIT.,DISP=(NEW,PASS),SPACE=(CYL,(1,1,5)),
//          DCB=(LRECL=80,BLKSIZE=19040,DSORG=PO,RECFM=FB),
//          DSN=&TABLESP          TEMPORARY TABLE LIBRARY
//*
//ISPPROF DD UNIT=&VIOUNIT.,DISP=(NEW,PASS),SPACE=(CYL,(1,1,5)),
//          DCB=(LRECL=80,BLKSIZE=19040,DSORG=PO,RECFM=FB),
//          DSN=&TABLESP          TEMPORARY TABLE LIBRARY
//*
//ISPLOG DD SYSOUT=*,
//          DCB=(LRECL=120,BLKSIZE=2400,DSORG=PS,RECFM=FB)
//*
//ISPCTL1 DD DISP=NEW,UNIT=TDISK,SPACE=(CYL,(1,1)),
//          DCB=(LRECL=80,BLKSIZE=800,RECFM=FB)  TEMPORARY FILE
//          TAILORING DATASET
//          OW01230
//SYSTEM DD SYSOUT=*
//*
//*-----
//* TEMPORARY CLIST CONTAINING COMMAND TO BE EXECUTED
//*-----
//SYSPROC DD DSN=&&&CLIST&STEP,DISP=(OLD,DELETE)
//          DD DSN=BZZ.SBZZCLIB,DISP=SHR
//          DD DSN=ISP.SISPCLIB,DISP=SHR          CLIST LIBRARY OW01230
//          DD DSN=SYS1.CLIST,DISP=SHR          CLIST LIBRARY OW01230
//*-----
//* BREEZE WORK FILES
//*-----
//*IGTRACE DD DUMMY
//*
//* BREEZE FOR SCLM WORK FILES
//*
//CIGLOG DD SYSOUT=*
//CIGLOG0 DD DUMMY
//CIGLOG1 DD DSN=&&CIGLOG1,
//          DISP=NEW,UNIT=tdisk,SPACE=(CYL,(1,1)),
//          DCB=(LRECL=132,BLKSIZE=13200,RECFM=FB)

```

```

//CIGLOG2 DD DSN=&&CIGLOG2,
//          DISP=NEW,UNIT=tdisk,SPACE=(CYL,(1,1)),
//          DCB=(LRECL=132,BLKSIZE=13200,RECFM=FB)
//CIGLOG3 DD DSN=&&CIGLOG3,
//          DISP=NEW,UNIT=tdisk,SPACE=(CYL,(1,1)),
//          DCB=(LRECL=132,BLKSIZE=13200,RECFM=FB)
//*
```

Step 12b. Update the FLMCNTRL Definition in the Project Definition Table

Prior to executing this step:

1. SCLM must be implemented on your mainframe.
2. At least one SCLM Project must be defined.
3. The systems personnel responsible for maintaining SCLM must be involved in any updates made to the Project Definition Table.

Review BZZSMFLM

At this point, you are ready to connect Breeze to SCLM by modifying the existing Project Definition Table (PROJDEFS).

For installation purposes, it is recommended that you install the product exits into a pilot project first.

The following member, BZZSMFLM, can be found in the SBZZJCL target library.

Note: Note that BZZSMFLM is meant to be an example of how to modify your current PROJDEFS. **It is not meant to replace your current PROJDEFS.**

```

*****
*          PROJECT CONTROL EXAMPLE
*****
* FLMCNTRL IS ONE OF THE REQUIRED DEFINITIONS FOR
* AN SCLM PROJECT. AS THIS IS JUST A SMALL PORTION OF THE OVER
* PROJECT DEFINITION, THIS MEMBER IS TO BE USED AS AN EXAMPLE
* FOR HOOKING UP THE IBM BREEZE EXITS.
*****
* THERE ARE FOUR EXIT PROGRAM NAMES.
*       BZZSME01 - BUILD EXIT
*       BZZSME02 - PROMOTE VERIFICATION EXIT
*       BZZSME03 - PROMOTE COPY EXIT
*       BZZSME04 - PROMOTE PURGE EXIT
* THE EXITS ARE REXX EXECs THAT CALL OTHER REXX EXECs AND ASSEMBLER
* PROGRAMS.
* MAKE SURE THE EXIT DATASETS BELOW POINT TO THE SBZZCLIB DATASET
* OFFLOADED FROM THE BREEZE SMP/E INSTALL.
*****
FLMCNTRL ACCT=SCLMHQ1.ACCOUNT.FILE,          C
        MAXVIO=999999,                        C
        BEXT1CM=TSOLNK,                       C
        BEXT1DS=BZZ.SBZZCLIB,                 C
        BLDEX1=BZZSME01,                     C
        PEXT1CM=TSOLNK,                       C
        PEXT1DS=BZZ.SBZZCLIB,                 C
        PRMEXT1=BZZSME02,                    C
        PEXT2CM=TSOLNK,                       C
        PEXT2DS=BZZ.SBZZCLIB,                 C
        PRMEXT2=BZZSME03,                    C
        PEXT3CM=TSOLNK,                       C
        PEXT3DS=BZZ.SBZZCLIB,                 C
        PRMEXT3=BZZSME04,                    C
        VIUNIT=VIO
```

Checkpoint 6

At this point the SCLM integration should be complete.

Task	Completed?
Does the SCLM logon contain the Breeze ISPF product libraries?	
Does the SCLM FLMLIBS skeleton contain the Breeze ISPF product libraries?	
Has the pilot SCLM project definition module been updated to point to the Breeze exits, contained in the Breeze ISRCLIB target library?	

Chapter 9. Steps to Checkpoint Seven

Step 13. Approver Notification for Breeze Applet

Step 13a. Configure the SMTP Server to Support Email

This step is optional and only needs to be performed if Email notification via an SMTP server is required. If only TSO SEND messages are to be used then go to Step 13b.

The Email interface serves as a companion piece to the standard approver notification. Once selected as an approver, anytime there are packages in need of approval the user will receive an email that contains an html link to the Breeze product.

How does it Work?

With its TCP/IP services, IBM bundles a Simple Mail Transfer Protocol (SMTP) server. In order to enable Breeze to pass the messages to SMTP for handling, you must:

1. Format the commands and the body of the message text
2. Write that data to a sysout class that has the SMTP server associated with it as a sysout writer.

Configure the SMTP Interface

In order to configure the email interface, you will need to collect the following items and information from your systems programming personnel:

- The name of the SMTP address space.
- The sysout class to write the SMTP data to.
- The fully qualified machine name, for example, **p390.companyname.com**.

Step 13b. Create the Configuration Member \$\$\$\$SMTP

This member must exist, as it contains not only the optional SMTP server information but also information required for sending TSO messages. If an SMTP server is not required then the SMTP information can be set to dummy values but must exist in this member. The JCL is required in this member in order to put the TSO SEND messages created during a batch promote onto the internal reader.

Once you have the information you need from the systems programming personnel, you will be ready to create configuration member \$\$\$\$SMTP in the **BZZ.SBZZJAVA** target library. Member BZZ\$SMTP in the SBZZJCL target library, an example of which is shown below, contains several lines of configuration information, with the data starting in the first column on both lines. You must copy the member BZZ\$SMTP to member name \$\$\$\$SMTP in the SBZZJAVA target library.

```
A,SMTP
P390.CIGI.NET
FROMUSER=JPRESTON@CAPECOD.NET
INTERNAL_READER=A,INTRDR
/*THE FROMUSER= IS THE OVERRIDE FOR SMTP MAIL FROM USER ID
/*SOME INSTALLATIONS REQUIRE A VALID SMTP MAIL ID
/*
/*THE INTERNAL_READER= IS THE CLASS AND PROGRAM THAT HANDLES THE INTERNAL
/*READER . THIS IS USED FOR BATCH TSO SEND COMMANDS
```

```

|          /*
|          /*THE FOLLOWING (THRU THE SYSTSIN DD) IS THE REQUIRED JCL. THE FORMATTED
|          /*SEND COMMANDS WILL BE APPENDED TO THIS JCL AND SUBMITTED TO THE INTERNAL
|          /*READER
|          /*
|          //SMTPRDR JOB 'SEND',REGION=4096K,MSGCLASS=X,CLASS=A,MSGLEVEL=(1,1),
|          // NOTIFY=&SYSUID
|          //STEP010 EXEC PGM=IKJEFT01
|          //SYSTSPRT DD SYSOUT=*
|          //SYSTSIN DD *

```

Line 1 contains *class,addressspacename* terminated by a blank. For example:

```

B,SMTP
|  |
|  | SMTP address name begins in column 3
|  |
|  | Comma must appear in column 2
|  |
Output class appears at column 1

```

Note that the default SMTP address name is SMTP.

Line 2 also begins in column 1 and contains the fully qualified machine name (or IP address) terminated by a blank. For example:

```
local.myname.com
```

FROMUSER=

is the override for SMTP Mail from User id. If your installation requires a valid SMTP mail id, you must code one into this syntax. If your installation does not require a valid SMTP mail id, you may leave this blank as Breeze will default to your TSO userid

INTERNAL_READER

is the class and program that handles the internal reader for batch TSO send commands.

// Section

is the REQUIRED JCL required thru the SYSTSIN DD* line. Be sure to include a valid jobcard. The formatted send commands will be appended to this JCL and submitted to the internal reader.

Test the Interface

1. The sample member **BZZTSTTO** is shown below. It can be found in the SBZZJCL target library. Rename member BZZTSTTO to **TESTTO**, modify it, and save into the **SBZZJAVA** data set. Since the test program (BZZEMAIL) will use this member, TESTTO should contain actual email addresses, preferably ones that you can access on-site.

```

USERID1
EMAIL-ADDRESS1
USERID2
EMAIL-ADDRESS2
USERID3
EMAIL-ADDRESS3

```

2. Use the sample JCL BZZSMJX4 for your test:

```

/***(JOB CARD)
/**
/** -----
/** NAME:      BZZSMJX4                               *
/** PURPOSE:   THE PURPOSE OF THIS JCL IS TO TEST THE SMTP CONTROL *
/**           MEMBER $$$$SMTP AND THE SETUP OF EMAIL. MEMBER *
/**           $$HTML, AS SPECIFIED IN JAVASERVERCONTROL DSNAME *
/**           PARAMETER, IS THE BZZINI/CIGINI FILE THAT WILL *
/**           BE EMAILED TO THE USER(S) AS DEFINED IN THE TESTTO *
/**           MEMBER OF THE JAVASERVERCONTROL LIBRARY. *
/** *
/**           FILES USED BY THE BZZSMJX4/BZZSTEM: *
/**           $$$$SMTP - CONTROL INFORMATION USED TO *
/**           COMMUNICATE WITH SMTP AND TSO SEND. *
/**           $$HTML - TEST MESSAGE TO BE SENT. *
/**           TESTTO - USER(S) TO RECEIVE $$HTML MESSAGE. *
/** *
/** ----- *
/** MODIFY THIS JCL TO MEET YOUR SITE'S JCL NAMING STANDARDS. *
/** *
/** 1) INCLUDE A JOB CARD *
/** *
/** ----- *
//TESTE EXEC PGM=BZZSTEM
//STEPLIB DD DSN=BZZ.SBZZLOAD,DISP=SHR <==BREEZE PRODUCT LIB
//CIGLOG DD SYSOUT=*
//SYSUDUMP DD SYSOUT=*

```

Figure 16. BZZSMJX4

3. Return Codes:

- When the return code is zero but no email has been received, you need to examine the output of the job. The SMTP server will periodically drain the spool queues that specify the SMTP server as the writer. If you see output for CIGEMAIL, it means that either the SMTP server has not yet drained the queue, or that the name of the SMTP started task that you specified as the writer name is incorrect.
- If the return code is *not* zero, you will need to examine the CIGLOG output for messages.

TESTTO is a sample for the purpose of validating that the \$\$\$\$SMTP control member is configured correctly and that the SMTP server at your installation is running.

The actual Breeze notification interface utilizes email addresses that are stored in the Breeze database and does not store or look for email attributes in TESTTO or any other location.

Step 13c. Configure the \$\$HTML Member

The Breeze Approver notification interface expects to find a member called \$\$HTML in the *SBZZJAVA* target library. This member **MUST** exist. This is the message that will be sent to approvers' Email ID and/or TSO userid when the SCLM promote function is used to request package promotion.

A sample member BZZ\$\$HTML can be found in the *SBZZJCL* target library. This member must be renamed to \$\$HTML.

\$\$HTML needs to be modified to include your IP address and port number as defined early in this manual. Any other changes will be cosmetic to the end user.

Attention: Please review the modification comments prior to making any modifications. In HTML comments are denoted using a '<!' as the first character and '>' as the last.

If you include the symbol %%PACKAGEID (in all uppercase) in \$\$HTML, then before Breeze sends the e-mail, it replaces %%PACKAGEID with the package name.

The following BZZ\$\$HTML sample member, renamed to \$\$HTML, can be found in the SBZZJCL library provided on the product tape. The bolded section of the http statement must be modified to reflect the location of your server.

There are Breeze packages that need to be approved (or vetoed) by you. The current package id requiring your attention is %%PACKAGEID. Click on the link below to perform review and approve/veto processing.

`http://ip-addr:port/brsclm.html`

Sample Email Output

```
HELO P390.CIGI.NET
MAIL FROM:<P390C@P390.CIGI.NET>
RCPT TO:<RLAUREN@BUTTERFLY.NET>
RCPT TO:<SFLATHEAD@BUTTERFLY.NET>
DATA
DATE: 08/02/00 16:41:09 GMT
FROM: P390C@P390.CIGI.NET
TO: PSYSB@P390.CIGI.NET
    PSYSLP390.CIGI.NET,
    RLAUREN@BUTTERFLY.NET,
    SFLATHEAD@BUTTERFLY.NET
SUBJECT: PLEASE APPROVE PACKAGE DEMOPK1
There are Breeze packages that need to be approved (or vetoed) by you.
The current package id requiring your attention is DEMOPK1.
Click on the link below to perform review and approve/veto processing.

http://209.244.240.219:1799/brsclm.html
```

Chapter 10. Checkpoint 7

At this point the following email related tasks should have been successfully completed.

Task	Completed?
Created and Modified the \$\$\$\$SMTP member and copied it to the BZZ.SBZZJAVA target library from BZZ\$SMTP?	
Created and Modified the TESTTO member and copied it to the BZZ.SBZZJAVA target library from member BZZTSTTO?	
Modified the BZZSMJX4 JCL1 and tested the EMAIL interface?	
Review the contents of the CIGEMAIL dd?	
Created and Modified the \$\$HTML member and copied it to the BZZ.SBZZJAVA target library from member BZZ\$HTML?	

Notices

This information was developed for products and services offered in the U.S.A.

IBM may not offer the products, services, or features discussed in this document in other countries. Consult your local IBM representative for information on the products and services currently available in your area. Any reference to an IBM product, program, or service is not intended to state or imply that only that IBM product, program, or service may be used. Any functionally equivalent product, program, or service that does not infringe any IBM intellectual property right may be used instead. However, it is the user's responsibility to evaluate and verify the operation of any non-IBM product, program, or service.

IBM may have patents or pending patent applications covering subject matter described in this document. The furnishing of this document does not give you any license to these patents. You can send license inquiries, in writing, to the IBM Director of Licensing, IBM Corporation, North Castle Drive, Armonk, NY 10504-1785, USA.

For license inquiries regarding double-byte (DBCS) information, contact the IBM Intellectual Property Department in your country or send inquiries in writing to

IBM World Trade Asia Corporation
Licensing
2-31 Roppongi 3-chome, Minato-ku
Tokyo 106, Japan

The following paragraph does not apply to the United Kingdom or any other country where such provisions are inconsistent with local law:

INTERNATIONAL BUSINESS MACHINES CORPORATION PROVIDES THIS PUBLICATION "AS IS" WITHOUT WARRANTY OF ANY KIND, EITHER EXPRESS OR IMPLIED, INCLUDING, BUT NOT LIMITED TO, THE IMPLIED WARRANTIES OR NON-INFRINGEMENT, MERCHANTABILITY OR FITNESS FOR A PARTICULAR PURPOSE. Some states do not allow disclaimer of express or implied warranties in certain transactions, therefore, this statement may not apply to you.

This information could include technical inaccuracies or typographical errors. Changes are periodically made to the information herein; these changes will be incorporated in new editions of the publication. IBM may make improvements and/or changes in the product(s) and/or the program(s) described in this publication at any time without notice.

Any references in this information to non-IBM Web sites are provided for convenience only and do not in any manner serve as an endorsement of those Web sites. The materials at those Web sites are not part of the materials for this IBM product and use of those Web sites is at your own risk.

IBM may use or distribute any of the information you supply in any way it believes appropriate without incurring any obligation to you.

Licensees of this program who wish to have information about it for the purpose of enabling: (i) the exchange of information between independently created programs and other programs (including this one) and (ii) the mutual use of the information which has been exchanged, should contact the IBM Corporation, Department TL3B, 3039 Cornwallis Road, Research Triangle Park, North Carolina, 27709-2195, USA. Such information may be available, subject to appropriate terms and conditions, including in some cases, payment of a fee.

The licensed program described in this document and all licensed material available for it are provided by IBM under terms of the IBM Customer Agreement, IBM International Program License Agreement or any equivalent agreement between us.

Information concerning non-IBM products was obtained from the suppliers of those products, their published announcements or other publicly available sources. IBM has not tested those products and cannot confirm the accuracy of performance, compatibility or any other claims related to non-IBM products. Questions on the capabilities of non-IBM products should be addressed to the suppliers of those products.

If you are viewing this information softcopy, the photographs and color illustrations may not appear.

Trademarks

The following terms are trademarks of International Business Machines Corporation in the United States, other countries, or both:

IBM
OS/390
SCLM
z/OS

Breeze is a trademark of Chicago Interface Group, Incorporated.

Internet Explorer is a trademark of Microsoft Corporation.

Netscape Navigator is a trademark of Netscape Communications Corporation.

Other company, product, and service names may be trademarks or service marks of others.

Glossary

activity log. See *log*.

administrator. Person responsible for using batch utilities on the host to:

- Define Breeze records for inventory junctions, approver groups and individual approvers
- Create reports of package activity
- Delete Breeze records of old packages

approved. A package status. Indicates either:

- The package was in pending status, and approvers have voted. In every approver group, there is a quorum of votes; all required approvers have voted and more than half of the votes cast were “for” (approve) votes. The package has not yet been promoted.
or
- The package does not require approval, but has not yet been promoted.

If the package reaches approved status before its execution window end date, then the package can be promoted.

However, if there is a problem with the SCLM promote copy or purge phase, then the promotion will fail, and the package will go into incomplete status.

approver. A Breeze user who is responsible for voting on (approving or vetoing) requests to promote members from a particular inventory location to the next higher group in the project hierarchy.

To vote, approvers use either the Breeze Web interface or the host-based voting batch utility. Approvers can use the Breeze Web interface to leave notes explaining their vote, and view package information: summaries, status, activity logs, source member contents and line-by-line changes, member collisions, ballot (who has voted, and how) and notes left by other approvers.

If your site does not use Breeze for voting, then there will be no approvers defined, and the role of administrator will be limited to creating reports of package activity and deleting Breeze records of old packages.

approver group. A set of approvers. An approver group can be assigned to an inventory location by an inventory junction record.

blank. A package status. Indicates that the Breeze administrator has run the delete batch utility on a package, leaving only summary and log information.

general user. A Breeze user who can use the Breeze Web interface to view package information. Unlike

approvers, general users cannot vote. A general user is anyone with a TSO user ID on the host where Breeze is installed.

host. The OS/390 or z/OS system where Breeze is installed.

inventory junction record. A type of Breeze record that links an inventory location to an approver group.

inventory location. A particular SCLM project, group, type and language. Identifies a set of source members in an SCLM project hierarchy.

log. A history of the actions performed on a package. Contains the action type, date and time, return code and user ID that performed the action.

package. An SCLM high-level (HL) architecture member. Developers create packages to identify source members that should be promoted together because they contain related changes. For details, see the *SCLM Project Manager's and Developer's Guide*.

package status. One of the following: pending, approved, vetoed, promoted, promotion failed, updated or blank.

pending. A package status. Indicates that a developer has used the SCLM promote function to request approval to promote a package. Breeze caused the promote function to fail because the package requires approval. Approvers can now vote on the package.

promoted. A package status. Indicates that SCLM has promoted the package.

quorum. The number of votes required in an approver group before the group vote can be decided as “approve” or “veto”. (An approver group with required approvers cannot have a quorum of zero. A quorum must be equal to or greater than the number of required approvers in the group.)

required approver. An approver whose vote is required before the vote of the approver group can be decided.

updated. A package status (displayed online with a leading asterisk, like this: *UPDATED). Indicates that the package has been rebuilt since the request for approval. The package cannot be promoted (because source members might have been changed). The administrator can reset the package to its previous status by running the reset utility, BZZSMJD1.

vetoed. A package status. Indicates that, in at least one approver group, there is a quorum of votes, all

required approvers in the group have voted, and at least half of the votes cast by the group were “against” (veto) votes. The package cannot be promoted.

Bibliography

- *Breeze Program Directory*, GI10-3179-00
- *Breeze Planning and Administration Guide*, SC31-8817-03
- *Breeze Functional Overview*, SC31-8818-01
- *SCLM Project Manager's and Developer's Guide*, SC34-4750-01
- *Breeze User's Guide*, SC31-8820-03

Index

Special characters

\$\$\$SMTP 45
\$\$HTML Member 47

A

Applet, Breeze 45
Authorized Dataset Requirement 19

B

Backup 13
Batch Reporting Utility 35
Breeze Applet 45
Breeze ISPF Component Libraries 39
Breeze Sample Database 9
Breeze Section, Define 11
Breeze, Logging onto 31
Browser JCL Shell, BZZSMPKG 20
Browser JCL Shell, BZZSMPRT 20
Brsclm.html 31
BZZ\$CNTL, Java CONTROL
Member-- 26
BZZHTML 29
BZZSMJ03 9
BZZSMJ04 12
BZZSMJ05 14
BZZSMJX3 30
BZZSMPKG 22
BZZSMPKG Browser JCL Shell 20
BZZSMPRT 22
BZZSMPRT Browser JCL Shell 20
BZZSMSRV 19

C

CIGINI Initialization File 10
CIGINI Load Module 10
Cloud 9 and Breeze, installing
together 10
Common Section 11
Common Section, Define 11
CONTROL Member-- BZZ\$CNTL 26
CTS Server Installation Verification 26
CTS Server JCL 19

D

Data set Names, ISPF/SCLM 6
Define Breeze Section 11
Define Common Section 11
Definition, FLMCNTRL 42
Detail Report IVP, Package 35

E

Email 45
Exits 1

F

File, CIGINI Initialization 10
FLMCNTRL Definition 42
FLMLIBS, IBM Skeleton 39

G

GRS 9
GRS Parameters 10

I

IBM Skeleton FLMLIBS 39
ISPF Component Libraries, Breeze 39
ISPF/SCLM Data set Names 6
IVP, Package Detail Report 35

J

Java CONTROL Member--
BZZ\$CNTL 26
JCL Members 2
JCL, CTS Server 19

L

Libraries, Breeze ISPF Component 39
Load Module, CIGINI 10
Log-On Proc, SCLM 39
Logging onto Breeze 31

M

Members, JCL 2
Members, SAMPLE 2

P

Package Detail Report IVP 35
Parameter, Timeout 19
Parameters, GRS 10
Password 6
Placeholders, Site-Specific 6
Proc, SCLM Log-On 39
Product Space Requirements 5
Project Definition Table 42

R

Requirement, Authorized Dataset 19
Requirements, Software 5
Requirements, Space 5
Requirements, System 5
Restore 13

S

Sample Database, Breeze 9
SAMPLE Members 2
SBZZJCL 2
SCLM Log-On Proc 39
SCLM user exits 1
Server Installation Verification, CTS 26
Server, SMTP 45
Site-Specific Placeholders 6
Skeleton FLMLIBS, IBM 39
SMTP Server 45
Software Requirements 5
Space Requirements, Product 5
Step-by-Step table 3
System Requirements 5

T

Table, Project Definition 42
Timeout Parameter 19

U

User exits, SCLM 1
Utility, Batch Reporting 35

Readers' Comments — We'd Like to Hear from You

IBM Breeze for SCLM for z/OS
Installation Guide
Release 1

Publication No. SC31-8819-03

Overall, how satisfied are you with the information in this book?

	Very Satisfied	Satisfied	Neutral	Dissatisfied	Very Dissatisfied
Overall satisfaction	<input type="checkbox"/>	<input type="checkbox"/>	<input type="checkbox"/>	<input type="checkbox"/>	<input type="checkbox"/>

How satisfied are you that the information in this book is:

	Very Satisfied	Satisfied	Neutral	Dissatisfied	Very Dissatisfied
Accurate	<input type="checkbox"/>	<input type="checkbox"/>	<input type="checkbox"/>	<input type="checkbox"/>	<input type="checkbox"/>
Complete	<input type="checkbox"/>	<input type="checkbox"/>	<input type="checkbox"/>	<input type="checkbox"/>	<input type="checkbox"/>
Easy to find	<input type="checkbox"/>	<input type="checkbox"/>	<input type="checkbox"/>	<input type="checkbox"/>	<input type="checkbox"/>
Easy to understand	<input type="checkbox"/>	<input type="checkbox"/>	<input type="checkbox"/>	<input type="checkbox"/>	<input type="checkbox"/>
Well organized	<input type="checkbox"/>	<input type="checkbox"/>	<input type="checkbox"/>	<input type="checkbox"/>	<input type="checkbox"/>
Applicable to your tasks	<input type="checkbox"/>	<input type="checkbox"/>	<input type="checkbox"/>	<input type="checkbox"/>	<input type="checkbox"/>

Please tell us how we can improve this book:

Thank you for your responses. May we contact you? Yes No

When you send comments to IBM, you grant IBM a nonexclusive right to use or distribute your comments in any way it believes appropriate without incurring any obligation to you.

Name

Address

Company or Organization

Phone No.



Fold and Tape

Please do not staple

Fold and Tape



NO POSTAGE
NECESSARY
IF MAILED IN THE
UNITED STATES

BUSINESS REPLY MAIL

FIRST-CLASS MAIL PERMIT NO. 40 ARMONK, NEW YORK

POSTAGE WILL BE PAID BY ADDRESSEE

IBM Corporation
H150/090
555 Bailey Avenue
San Jose, CA
U.S.A 95141-9989



Fold and Tape

Please do not staple

Fold and Tape



Program Number: 5697-G58

Printed in U.S.A.

SC31-8819-03



Spine information:



IBM Breeze for SCLM for z/OS

Installation Guide

Release 1