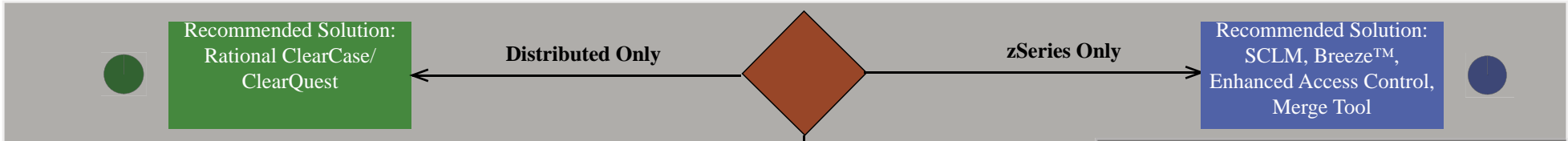


Sales Guide to selling IBM® SCLM Suite and Rational® ClearCase®/ClearQuest®



Does client manage mixed zSeries® and Distributed Objects?

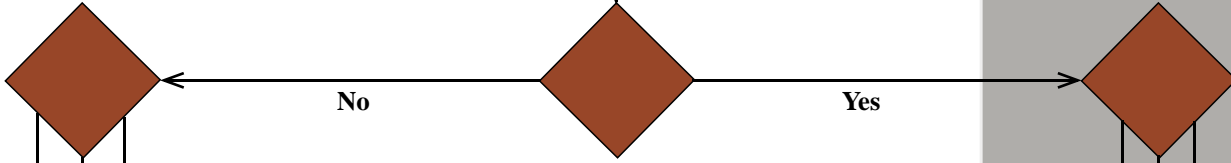
Shading indicates positioning



Do you know or does your client have a strategy of where the SCM should reside?

Where is the mission-critical application development being done?

Single centralized CM model or multiple distributed CM model?



Equal zSeries and Distributed



Recommended Solution: Store zSeries assets in SCLM, store distributed assets in ClearCase/ ClearQuest and develop synchronization control process*

Multiple Distributed CM

Greater zSeries



Recommended Solution: SCLM Suite (SCLM, Breeze, Cloud 9 Enhanced Access Control, Merge Tool)

Single Centralized On-Host

Greater Distributed



Recommended Solution: Store complete applications using Rational ClearCase/ ClearQuest and the ClearCase Remote Build feature

Single Centralized Off-Host

Please note the following definitions:
Single Centralized Off-Host:
 A single vendor solution but could contain multiple instances/repositories of the same product.
Single Centralized On-Host:
 A solution containing one repository from one vendor.

Legend
 Distributed
 zSeries

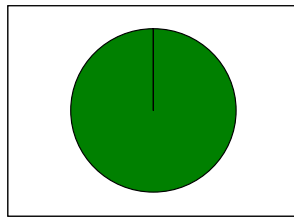
* IBM's direction and intent is to provide such synchronization in the future as a part of the Enterprise Management offering.

Please proceed to the next page for more information on each of the solutions listed here.

Internal Use Only

Sales Guide to selling IBM SCLM Suite and Rational ClearCase/ClearQuest

Internal Use Only

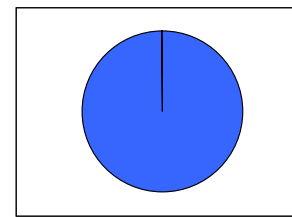


Applications: 100% Distributed Code

Recommended Solution:
Rational ClearCase/ClearQuest

Value Proposition Points:

1. Version Control
2. Workspace Management
3. Build Management
4. Comprehensive Integrations with leading IDEs.
5. Easily control change with Unified Change Management (UCM)
6. Parallel development



Applications: 100% zSeries Code

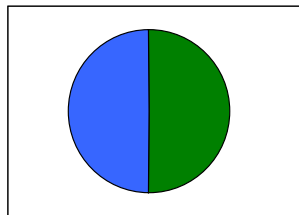
Recommended Solution:
SCLM, Breeze, Enhanced Access Control, and Merge Tool

Value Proposition Points:

1. Lower Cost
2. Distinctive Functionality
3. Library and Configuration Management Functions
4. Package Approvals
5. Extension of RACF controls
6. Three-way Code Merging

Legend

- Distributed
- zSeries



Applications: Mixed: Mission-critical applications developed approximately equally on zSeries and distributed platforms. Or, strategic direction of multiple distributed configuration managers.

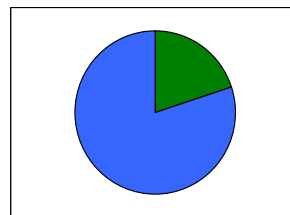
Recommended Solution:

Store zSeries assets in SCLM, store distributed assets in ClearCase/ClearQuest and develop synchronization control process*

Value Proposition Points:

1. Solution from a single vendor
2. Positions customer well for future direction

* IBM's direction and intent is to provide such synchronization in the future as a part of the Enterprise Change Management offering.



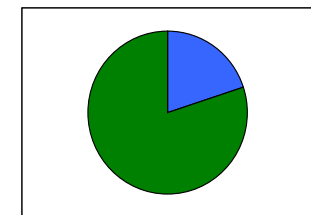
Applications: Mixed: Mission-critical applications developed mostly on zSeries platforms with some minimal development on distributed platforms. Or, strategic direction of a single on-host configuration manager.

Recommended Solution:

SCLM Suite: SCLM, Cloud 9, Breeze, and Enhanced Access Control, Merge Tool

Value Proposition Points:

1. Distributed and zSeries code can be stored in one location and packaged together
2. Built and deployed as a single entity



Applications: Mixed: Mission-critical applications developed mostly on distributed platforms with some minimal development on zSeries platforms. Or, strategic direction of a single off-host configuration manager.

Recommended Solution:

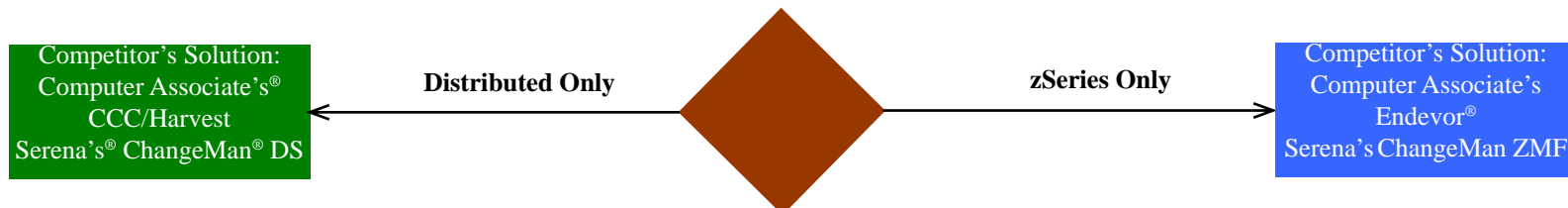
Store complete applications in Rational ClearCase/ClearQuest and utilize the Rational ClearCase Remote Build feature

Value Proposition Points:

1. Distributed and zSeries code can be stored in one location and packaged together
2. Built and deployed as a single entity

Competitor Positioning

Are the applications distributed, zSeries, or mixed?



Mixed

Single centralized CM model or multiple distributed CM model?

Please note the following definitions:
Single Centralized Off-Host:
 A single vendor solution but could contain multiple instances/repositories of the same product.
Single Centralized On-Host:
 A solution containing one repository from one vendor.

Quarterly updates will be provided to this Competitor Positioning chart.

Single Centralized Off-Host

Single Centralized On-Host

Multiple Distributed CM

Competitor's Solution:

Competitor's Solution:

Competitor's Solution:
 Computer Associate's AllFusion™ including Endeavor and CCC/Harvest.
 Serena's ChangeMan product family.
 Merant's® Dimensions™ product.*

* Merant claims full zSeries support.

Internal Use Only

Disclaimer: This document is provided for reference purposes only. This chart represents a snapshot in time, and is an IBM internal assessment of product comparisons based on information obtained as of the date they were put together. No formal testing or validation has been done of the functions of the competitive products listed here and the information provided may be incomplete. Product and company names mentioned herein may be the trademarks of their respective owner.

Legend
 Distributed
 zSeries

Sales Guide to selling IBM SCLM Suite and Rational ClearCase/ClearQuest

1. If the customer is developing applications for execution on distributed platforms, then recommend Rational ClearCase/ClearQuest.
2. If the customer is developing mainframe applications (e.g., COBOL) for execution only on the zSeries or S/390 platforms, then recommend SCLM with Breeze, Enhanced Access Control, and the Merge Tool. At a given point in time, it is often costs less than similar products from our competitors and offers the distinctive functionality of providing **both** Library and Configuration Management functions.
3. If the customer is developing mixed applications where they have legacy (e.g., COBOL) components and distributed (e.g., Java) components, recommend one of the following three options:
 - Storing Java code in Rational ClearCase on the distributed platforms, and continue to store their COBOL code in SCLM, and if needed, develop a process to control the synchronization of their development life cycle. IBM Global Services can assist with the development of this process if so desired.
 - It is IBM's statement of direction to develop integration between SCLM Suite and Rational ClearCase/ClearQuest as a key step toward providing a complete Enterprise Change Management solution that spans distributed and zSeries development.
 - Storing, managing, and controlling the complete application through the development / build / deployment cycle by using SCLM Suite.
 - Storing complete application in Rational ClearCase and ClearQuest and use the Mainframe Connectors feature, Remote Build, to support building on the z/OS environment.

As with all plans, IBM Rational reserves the right to make changes to its current and future plans as needed.

For more information, please contact:

Terry Durkin
 IBM Rational Product Manager
 e-mail: tadurkin@us.ibm.com
 phone: +1-781-676-2586 (US Eastern Time)

Glenn Fisher
 IBM zSeries Application Development Tools Executive
 e-mail: fishergj@us.ibm.com
 phone: +1-301-240-3906 (US Eastern Time)

David Lawrence
 IBM Rational Technical Marketing Engineer
 e-mail: dlaw@us.ibm.com
 phone: +1-781-676-2773 (US Eastern Time)

Rayner Marx
 IBM Application Tools Development Sales Enablement
 e-mail: raynerm@us.ibm.com
 phone: +1-714-438-6183 (US Pacific Time)

© Copyright IBM Corporation 2003

Printed in the United States of America.
 October 2003. All Rights Reserved.

References in this publication to IBM products or services do not imply that IBM intends to make them available in all countries in which IBM operates.

IBM, z/OS, Rational, ClearCase, ClearQuest, zSeries and the IBM logo are trademarks of the International Business Machines Corporation in the United States, other countries, or both.

Breeze is a trademark of the Chicago Interface Group

Other company, product, and service names may be the trademarks, or a service marks of others.

