



IBM SCLM Administrator Toolkit for z/OS

<p style="text-align: center;">Highlights What's New in Version 2.1</p>	<p style="text-align: center;">Functionality continued from Version 1.1</p>
<ul style="list-style-type: none"> - Delivers key enhancements in project handling, including new support for: <ul style="list-style-type: none"> - Custom user macros in existing SCLM project definitions - Modular project design and reuse of common components, such as languages across projects - Adds a Remote Migration Wizard to migrate assets from remote systems into SCLM, including files with long names - Provides improved Migration Wizard support for the specification of a date, with user choices. - Delivers the enhanced GUI Language Definition Wizard 	<ul style="list-style-type: none"> - Improves flexible error message handling for information messages, error messages, and the GUI log - Includes additional VSAM support, including tasks for secondary Accounting and Auditing data sets - Provides improved performance for large projects - Provides RSE Daemon mode, an alternative method to REXEC for initiating a TCP/IP session on a workstation - Includes a new Installation Verification Program (IVP) and improved GUI install and configuration procedures - Simplifies the administration of SCLM-managed projects by means of an Eclipse-based workstation graphical interface or ISPF-interface.

Overview

IBM's Software Configuration and Library Manager (SCLM) is a program that provides software configuration and library management for the z/OS and OS/390 platforms. The SCLM Administrator Toolkit (formerly SCLM Suite Administrator Workbench) provides you with a set of tools that make defining and maintaining SCLM projects and the SCLM Plus products simpler and easier than ever before. The administrator functions are accessible from either a workstation-based graphical interface or ISPF panels, thereby allowing users who prefer either type of interface to be equally effective and productive.

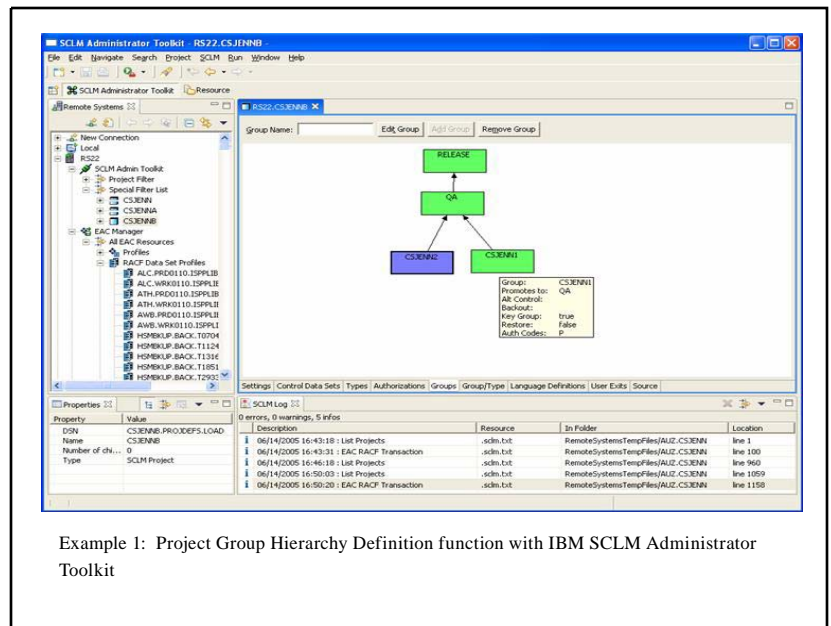
Getting Started

The SCLM Administrator Toolkit provides a number of wizards to guide you through the set up and maintenance of your SCLM Plus environment.

In addition to assisting with SCLM project creation and maintenance, the SCLM Administrator Toolkit includes wizards that work together with Enhanced Access Control (EAC) to enable the project administrator to set access privileges and administer a project from a centralized console. Such functions include creating and maintaining RACF dataset profiles, EAC Rules Files, EAC profiles, and EAC applications.

Project Hierarchy Generation

When defining a project lifecycle or hierarchy using the workstation interface, drop boxes can be dragged around the display in order to represent project groups and build a network of linked toolboxes, much



Example 1: Project Group Hierarchy Definition function with IBM SCLM Administrator Toolkit

like an organization chart. Once the definition is completed, SCLM Administrator Toolkit generates an SCLM project hierarchy. A process to add or modify groups is also available at the host using ISPF panels.

User Exit Configuration

Required user exits, including Breeze user exits, can be configured using the Project Wizard.

Language Definition Addition

Language definitions may be added, modified, or removed using the Language Definition Wizard. New language definitions can also be created from existing definitions, existing JCL, or directly via the editor.

Architecture Definition Generation

Automatically generate SCLM architecture definitions from an existing load module or JCL. A manual option for creating architecture definitions also exists.

Project Cloning

Project definitions and/or entire projects (including the project contents) can be replicated using the Cloning Wizard.

Asset Migration

Software assets can be easily migrated into an SCLM project from existing libraries using the Migration Wizard. With the new Remote Migration Wizard, assets, including those with long file names, can also now be migrated from remote systems into SCLM.

Other Functions

The SCLM Administrator Toolkit now provides users with the ability to perform project VSAM allocation, deletion, and maintenance tasks. PDS deletion and allocation tasks can also be accomplished via the SCLM Administrator Toolkit.

Enhanced Access Control Wizard

The Enhanced Access Control (EAC) Wizard is an intuitive, easy-to-use GUI that enables the project administrator to create, list, modify, and delete RACF dataset and RACF profiles, further allowing the association of the two types of profiles. In addition, the EAC Wizard allows applications to be defined, modified, viewed, and deleted, as well as allowing project administrators to view access violations and cause updated Rules Files to take effect.

Project Wizard

Using the Project Wizard, users can define types, package backout parameters, and groups. If users are modifying an existing project and want to delete a type or group, the Project Wizard will, after confirmation from the user, delete any data associated with that type or group.

Complementary Solutions

Developer Toolkit is an Eclipse-based tool that extends the functionality and accessibility of SCLM by providing an Eclipse-based integrated development environment (IDE) interface. With its integrated support for storing into SCLM files with long names, such as Java program files, HTML files, graphics files, and other workstation files, Developer Toolkit lets Java/J2EE developers code and test their applications in an Eclipse-based IDE and then use Developer Toolkit to store their source code in SCLM.

SCLM Plus is a multi-function solution to meet IBM z/OS(R) Software Configuration Management (SCM) needs. Distinctive library and configuration management functions along with package approval processing to help ensure organizational accountability and streamline approval procedures. Augmented security controls offer a degree of granularity to help prevent accidental damage or unexpected changes. Three-way merge

functionality enables parallel development for emergency fix situations, multiple release development, and customization work. SCLM Plus also includes a tool to simplify project administration that assists in the creation and configuration of projects as well as the Developer Toolkit solution mentioned previously to extend functionality and accessibility to SCLM.

Hardware Requirements

For Host System:

- A IBM eServer zSeries machine capable of running the required software

For Workstations:

- RAM: 1 GB or higher recommended for best performance, minimum 768 MB required.
- 160 MB of disk space available
- 800 MHz or faster processor
- 1024 x 768 resolution monitor
- TCP/IP connectivity with host mainframe system



Software Requirements

For Host System:

- z/OS V1R4M0 or later (preferably V1R6 or later)
- z/OS PTF PQ84190 (for z/OS V1.4 and V1.5 only)
- z/OS PTF that fixes APAR OA11426 (to support Long Name Translation)
- Java 1.4.2
- UNIX System Services (USS) must be operational
- One of the following if the GUI client is used: OMVS REXEC Service or RSE daemon
- XML Toolkit for z/OS V1.7

For Workstations when using the GUI client:

- One of the following operating systems:
 - Windows XP
 - Windows 2000 with Service Pack #3 or later
 - Red Hat Linux Pro 8.0 on Intel x86 with GTK
 - IBM AIX 5L on PowerPC
- TCP/IP connectivity with host mainframe system
- A pre-existing Java 1.3 or better JRE (used by Client Installer only)

For Workstations when using the ISPF interface with a 3270 emulator:

- A 3270 emulator product (such as IBM Personal Communications or IBM Host On-Demand) that is capable of connecting to a host system and processing the screens generated by ISPF
- Connectivity with a host system via TCP/IP or SNA depending on your network

© Copyright IBM Corporation 2005

IBM Corporation

Software Group
Route 100
Somers, NY 10589
U.S.A.

Printed in the U.S.A.


11-2005

All Rights Reserved.

Other company, product and service names may be trademarks or service marks of others.

References in this publication to IBM products or services do not imply that IBM intends to make them available in all countries in which IBM operates.

The IBM home page on the Internet can be found at ibm.com

 Printed in the U.S.A. on recycled paper containing 10% recovered post-consumer fiber.