



День из жизни цифрового IBM'ера

The WORKPLACE just for YOU



A stylized world map in shades of light blue and green, overlaid with a network of white dots and lines representing global connectivity. The map is centered on the Atlantic Ocean, with North and South America on the left and Europe and Africa on the right.

Работа из дома

В пути по дороге на работу

MTS RUS 16:28

Edit My Rooms

IBM SmartCloud

- ★ 5736-8241 Anthony Newton ⓘ
- ★ 6684-1843 Michael Vilker ⓘ
- ★ 7631-5984 Eva Novak + ⓘ

MTS RUS 16:29

Library

Recent A-Z

FILES

- 2 minute Files and Profiles demo.pdf
Linked File | 17 авг. | 10 MB
- Meeting report - Apr 12, 2014 6.58.27 PM.rtf
Linked File | 29 июля | 26 KB
- Meeting report - May 22, 2014 10.34.58 AM.rtf
Linked File | 3 июля | 9 KB

MTS RUS 16:30

5736-8241

SocialBusiness Anthony Newton is sharing page 2 of 14. IBM

Agenda

- Introductions
- What is Social Business?
- Why Cloud Computing is Important to our Customers
- About SmartCloud: The Social Business Cloud
- eMail is eMail, but is it Enterprise Ready eMail?
- Demonstration
- Hands-on Workshop Labs

MTS RUS 16:30

5736-8241

SocialBusiness Anthony Newton is sharing page 7 of 14. IBM

1 2 3

Поделюсь файлом с внешней организацией

MTS RUS 16:31

Мои файлы

Поиск

- Social ROI ba...Aug 2012.ppt (25 июля)
- 4.37 Quick guide.ppt (20 июля)
- Q4 ND Renewals Europe.ods
- ND License b...irst Draft).xlsx (1 июля)
- Moscow Event.ppt (9 июня)
- Brief SC New_3.pptx

Файлы Папки

MTS RUS 16:31

Мои файлы

Поиск

- Social ROI ba...Aug 2012.ppt (25 июля)
- 4.37 Quick guide.ppt (20 июля)
- Q4 ND Renewals Europe.ods
- ND License b...irst Draft).xlsx (1 июля)
- Moscow Event.ppt (9 июня)

И, Поделиться, Группы, Скачать

Файлы Папки

MTS RUS 16:35

Назад Операция

Accelerate the Bridge to IBM's SC4SB Sales Play 4.37 'Bridge To Cloud PLUS'

Обновлен пользователем Charles Stauber 15.08.2014 | Выполнить до 31.12.2014

Последние обновления

Страница 1 из 6

- More Information - Links to IBM SC4SB SaaS Terms
- Value Add - Cloud Readiness Assessment
- IBM SmartCloud for Social Business Terms of Use

Файлы Папки

MTS RUS 16:36

Операция Профайл

Stauber, Charles (Chuck)

WW Sales Leader - Industry Cloud Solutions / SaaS

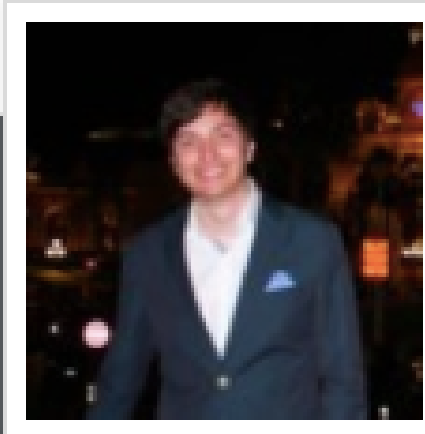
Обновления Информация

Добавить в сеть Отслеживать

ЭЛЕКТРОННЫЙ АДРЕС
chuck_stauber@us.ibm.com

АЛЬТЕРНАТИВНЫЙ АДРЕС
Chuck Stauber/Chicago/IBM@Lotus

РАБОЧИЙ
1-720-663-2084



Обновления

@ Упоминания

1 Мои уведомления

Требующие
внимания

★ Сохраненные

Моя страница

Начало работы

Все материалы

Поиск



Настроить

Список задач



У вас нет задач.

[Перейти к списку моих задач...](#)

Рекомендации

 [CeBIT_2015_Social_Leadership_Update_2015](#)

1 связанный тег

[CEE MEA GVI](#)

1 связанный тег

[IBM Fast Start to Essentials - Job Role Roadmap](#)

1 связанный тег

[Making a difference with our Growth Engine Business](#)

1 связанный тег

1 связанный пользователь

[ICS Continuous Delivery](#)

1 связанный тег

1 - 5 из 15

[Назад](#)[Далее](#)

Мероприятия

Вы не отслеживаете ни одного
предстоящего мероприятия и не**Поделиться:** Обновите свой *статус* или передайте *файл* на сервер.

Чем вы хотите поделиться?

Отслеживаемые мной

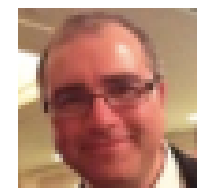
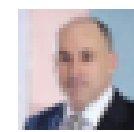
Обновления статуса

Найти



Обновления для ответов на публикации, отслеживаемых пользователей и элементов

Все

Пользователю [Alex F. Atakov](#) понравился комментарий к сообщению пользователя [Greg Ellevsen](#).

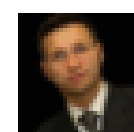
[Greg Ellevsen](#) At yesterday's global S&D MCC leadership meeting in New York we previewed new enhancements to the BrandEdge Tool, how marketing and communication budgets are being consolidated and simplified, and planned how we as leaders would help the team develop a culture oriented to high performance marketing.

In the evening I was privileged to join a small group at an informal dinner hosted by our global SVP Jon Iwata, where we learned and provided some input to corporate brand and communication strategies.

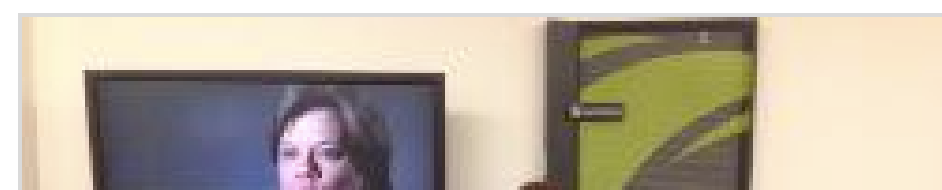


1 • Мне нравится • Комментарий • Повторная публикация • Дополнительно...

22m назад

Пользователю [Alex F. Atakov](#) понравился комментарий к сообщению пользователя [Jerome Selva](#).

[Jerome Selva @De Vries, Rosanne](#) BEACON is live in Marlborough, thanks to [@GutieGutierrezMark](#) (MAR and the team...
[K@Gutierrez, Mark \(MARK\)](#))



- FAVORITES
 - Apple Support Community
 - More favorites...
- UPDATES
 - Status Updates
 - I'm Following**
 - My Notifications
 - @mentions
 - Action Required
 - Discover
- APPS
 - Profiles
 - Communities
 - Files
 - Sync
 - Wikis
 - More Apps...
- Christopher Crumme
Connections

IBM Connections

I'm Following



Christopher Crumme commented on their own file [apple and ibm.key](#).

Today 11:25 AM

apple and ibm.key

1 0



Christopher Crumme This was the start of the document strategy we wanted to use.

Today



Christopher Crumme liked their own [BYOD Strategy](#) blog entry in the [Apple Support Community](#) blog.

Today 11:21 AM

BYOD Strategy

The Authorized Personal Devices (APD) program is internal corporate implementation of what is commonly known as Bring Your Own Device. IAPD allows employees to use a personally owned device for work instead of, or in ad... [Continue Reading](#)

0 1



Christopher Crumme edited the file [Tax Strategy.doc](#).

Dec 8 9:33 PM

Tax Strategy.doc

2 0



George Brichacek uploaded the file [Idea jam.doc](#).

Dec 8 9:58 AM

I'm Fo

Christopher Crummey comm
Today 11:25 AM

apple and ibm.key
1 0

Christopher Crumm
we wanted to use.
Today

Christopher Crummey liked t
Apple Support Community b

Milton, MA 984

The I'm

Q W E R T Y U I O P

A S D F G H J K L return

↑ Z X C V B N M ! ? ↑

.?123 😊 🎤 @ #





Cancel

Everyone

Post



I'm For Working on a presentation on our collaboration strategy for Apple



Christopher Crummey comm

Today 11:25 AM



apple and ibm.key

1 0



Christopher Crumm

we wanted to use.

Today



Christopher Crummey liked t
Apple Support Community b

Today 11:21 AM



Milton, MA



919

Done



I'm Following



Christopher Crummey commented on their own file [apple and ibm.key](#).

Today 11:25 AM



apple and ibm.key

1 0



Christopher Crummey This was the start of the document strategy we wanted to use.

Today



Christopher Crummey liked their own [BYOD Strategy](#) blog entry in the [Apple Support Community](#) blog.

Today 11:21 AM



BYOD Strategy

The Authorized Personal Devices (APD) program is internal corporate implementation of what is commonly known as Bring Your Own Device. IAPD allows employees to use a personally owned device for work instead of, or in ad... [Continue Reading](#)

0 1



Christopher Crummey edited the file [Tax Strategy.doc](#).

Dec 8 9:33 PM



Tax Strategy.doc

2 0



George Brichacek uploaded the file [Idea jam.doc](#).

Dec 8 9:58 AM

All Connections



Apple seeks to better iPad, iPhone s...



Apple Web site



Apple Company



Could the 'Design Thinking' that lead...



Apple Support Community



Apple Support Community



Apple Support Community



Best way to transfer documents fro...



Bokardo - Social Web Design » On T...



Damon Deaner



Jon Johansen hacks FairPlay, the Ap...



Start Developing iPad Apps - Apple...



iOS Developer Program - Apple Deve...



Get cost estimate from Dell.com or A...



Get cost estimate from Dell.com or A...



IBM Connections



Community



Members

Edit



Apple Support Community

Updated by Christopher Crummey
November 29, 2014 3:04 PM

Updates

Apps

Leave

Stop Following

Description >

Members >

Blog >

Bookmarks >

Files >

Forums >

C



Christopher Crummey
Owner

G



George Brichacek
Owner



R



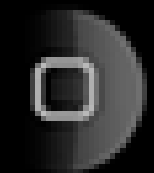
Ronald Denham
Owner

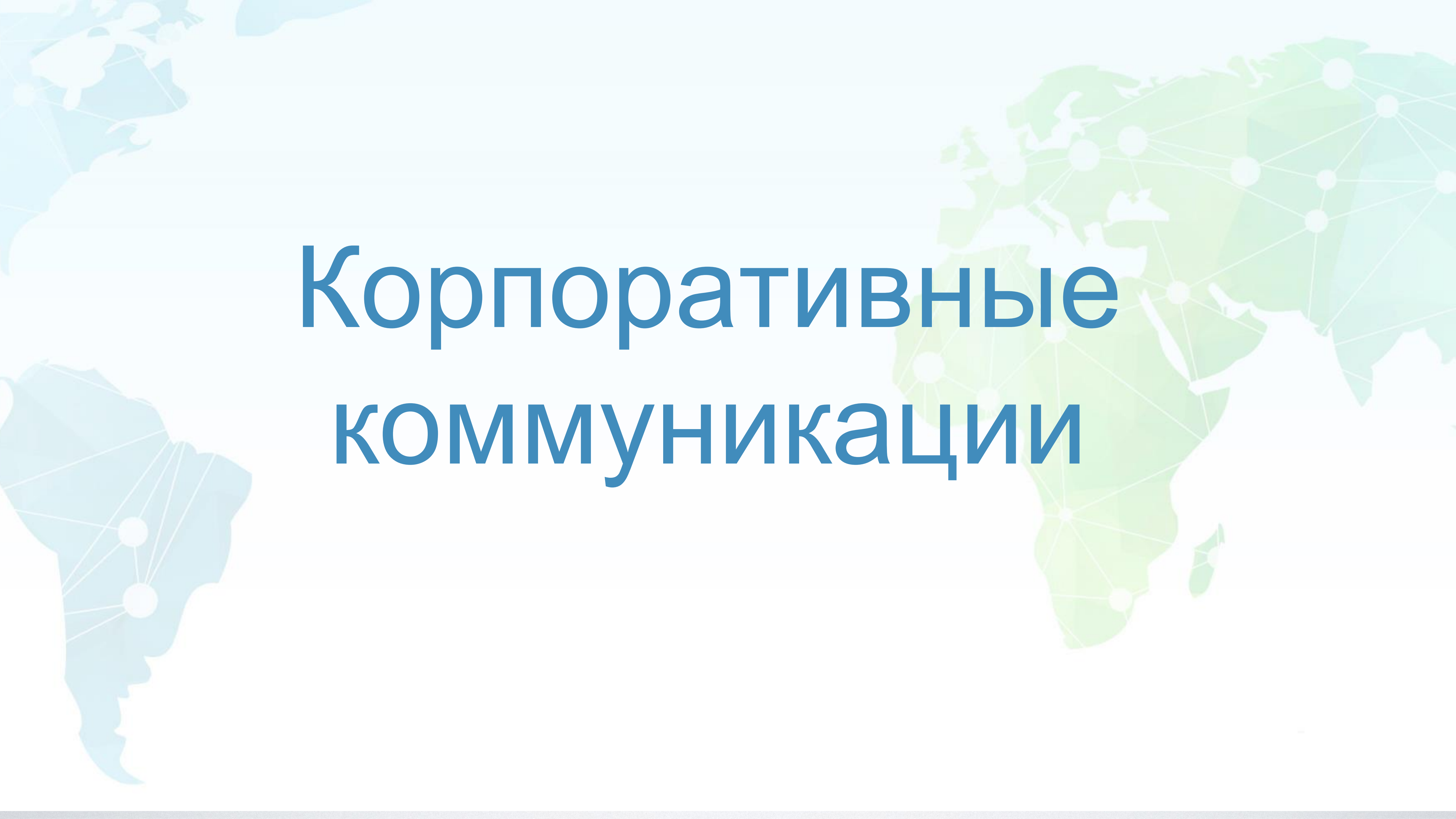


T



Ted Stanton
Owner



A stylized world map in shades of light blue and green, overlaid with a network of white dots and lines representing global communication or data flow. The map is centered on the Atlantic Ocean, with North and South America on the left and Europe and Africa on the right.

Корпоративные КОММУНИКАЦИИ

Мой портал

w3 IBM Workplace 1-3-9 My Links You & IBM Collaboration Support

IBM: 161.94 (+1.07)

Welcome to the w3 home page

Welcome **DMITRY V. SHPIL**
Need to switch IDs?

Search people and w3

News for all

IBM Investor Briefing 2015
Ginni and senior IBM leaders chart progress on our strategy. Replay available.

Announcing three new apps
Momentum for an opportunity that is ours to own

IBM rocks at InterConnect
Aerosmith, news, all session replays and more. See what you missed.

Wild Ducks episode 2
Meet the next great ski legend, a CIO: How big data saved skiing from the sharing economy.

Last updated at: 9:35 PM [View more...](#)

Your news

Recap daily coverage of IBM Security at InterConnect
Watch replays of the top IBM Security presentations and see photos and interviews from the event each day. [Profiled for various audiences]

Recap daily coverage of IBM Security Sales Academy
Watch replays of the best IBM Security Academy presentations and find resources for various audiences]

Bold innovations and new sales playbooks for clients to the cloud
IBM extends hybrid cloud to the enterprise for sellers]

IBM revs up Honda's mobility
When Honda needed an enterprise mobility solution they sought IBM's technical expertise.

Last updated at: 9:36 PM

Get connected

Think Academy wants to hear your voice!
Join the conversation and explore how IBM Commerce could help re-think the customer experience.

Story of the Week: Calling all explorers!
Devin O'Boyan from the Design Internship Program

Popular links

- BI@IBM Portal** Home Page
- Bluemine** Market Development and Insights
- Bluepages** People search
- BOND** Buy on demand
- Business Conduct Guidelines** BCG - Conducting yourself as an IBMer
- Career and Life** Your Career, Money, Life homepage
- CareerSmart** Suite of career programs, including Think40
- Client CollaborationHUB** Connect & Engage with team mates
- Concerns and Appeals** Open Door, Panel Review (US only), Confidentially Speaking
- Connections** Internal IBM Community
- e-AMT** e-Asset Management Tool
- GOM** Global Opportunity Marketplace
- GTS Resource Analytics Hub** Comprehensive analytics environment for global resource & capacity mgmt
- HRMS** Human Resource Management System
- IBM Professional Marketplace** Select, ID and Assign Practitioners
- IBM Workplace** Personalized to your IBM work
- iERP Portal** Record hours in CATS iERP workflow (UWL)
- iNotes** Web based Notes access
- ISSI** IBM Standard Software Installer
- IT Help Central** IBM online support
- Meetings** Launch IBM Meetings
- Mobile @ IBM** Get the latest news about using mobile devices in IBM
- PBC** Personal Business Commitments
- Practitioner Portal** Sales and Delivery Enablement
- SalesConnect** Integrated sales platform
- Travel (OTR)** Online travel reservations
- w3 Site map** Links to frequently used pages
- WWER** Expense reimbursement
- You and IBM topics** IBM human resources index

Popular links


Feedback

THINKtogether

[View All Entries](#)

Thoughts after Day 1
Virginia Rometty | Jan 3 2012 | Tags: rometty ginni 2012 strategy ceo day-1 | **751 Comments** | 205,358 Visits

I spent my first day of 2012 meeting with clients and with IBM employees. I thought I'd share a few insights with you here.



The year 2012 marks the beginning of a new century for IBM and my first day as our CEO.

[Add a Comment](#) | [More Actions](#)

Comments (751)

IBM Connections Home Profiles Communities Apps


My Blogs Public Blogs My Updates

THINKtogether

THINKtogether

Reaching New Buyers, Creating New Markets
Michael Rhodin | Aug 20 | Tags: solutions one mike rhodin new-markets | 25 comments | 13,095 visits

A major theme we've heard from Ginni this year -- and one I see every week in client meetings -- is that a maker is taking center stage. This is particularly true in the marketing realm, where Chief Marketing Officer tasked with re-orienting their entire organizations around the customer. I wanted to share my thoughts on the three marketing imperatives that we believe will form the backbone for this transformation over the next...



Mike Rhodin
SVP, IBM Software Solutions Group

Hi, team. As Ginni discussed, I wanted to describe for you an exciting opportunity

w3 IBM Connections Home Profiles Communities Apps Christopher C. Crumney

My Blogs Public Blogs My Updates

ICS Communications

IBM Collaboration Solutions Community

Overview Recent Updates Status Updates Members Blog Bookmarks Wiki Forums Feeds Files Media Gallery Activities

ICS Communications

New Entry

A Message from Alistair Rennie on Connect 2013
GABRIELLE M. GRENCHUS | Tuesday 1:10 PM | Tags: alistair-rennie collaboration-solutions connect social-business smarter-workforce rennie 2013 | 2 Comments | 216 Visits



Alistair Rennie
GM, Collaboration Solutions

Вовлекая сотрудников через блоги

IBM's Social Dashboard



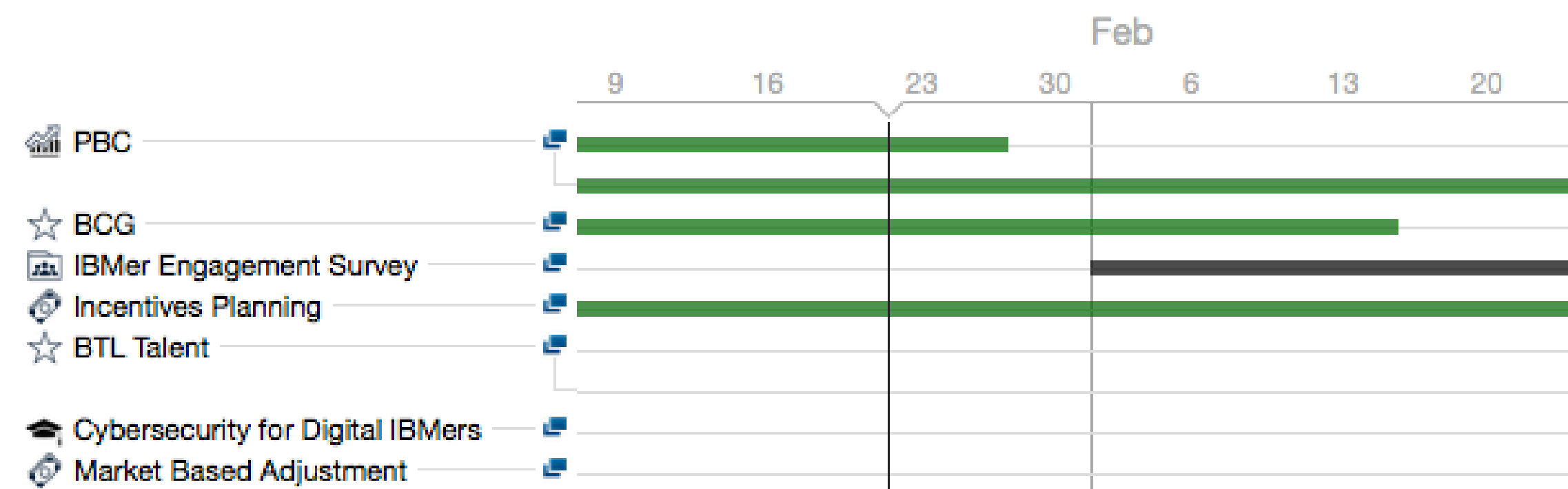
ManagerHub



Welcome to your personalized manager workplace. Find the team information, news and links you need - all in one place.

[Updates](#) [Ideas](#) [Help](#)

Task Tracking Calendar



Your Tasks & Dashboards

- Your Org
- Awards
- BTL Talent
- Compensation
- Expenses
- PBC
- Review Dates
- Security
- Span and Layer

Your Team

GLOBAL INCOUNTRY

Leadership (5)

>
 >
 >
 >

Peers (11)

A stylized world map in shades of blue and green, overlaid with a network of white dots and lines representing global connectivity. The map is centered on the Atlantic Ocean, with North and South America on the left and Europe and Africa on the right.

Обмен знаниями

Communities

This Community Search

Watson

Stop Following this Community | Community Actions

Watson



Overview

Recent Updates

Members

Blog

Activities

Related Communities

Media Gallery

Events

Subcommunities

Watson Sales

Watson Marketing

IBM Blue Spark

Watson Design

Tags

Community Description

IBM Watson

- News
- Education
- Solutions
- Resources

We're just getting started...

Watson Applications



Members



View All (61299 people)

Related Communities



Watson CTO Office
Recent Updates



Watson Core Technology
Communi...
Recent Updates

View All

Media Gallery

Upload



View All (44)

Upcoming Events

Watson Community



Cary Thomas

Certified Technical Sales Strategist, Software and ICS

Strategy

Cary leveraged social to help IBMers use Mac products successfully, resulting in a happier workforce and over 15,000 Macs at IBM today.

- Developed **expertise** for Mac usage of IBM software
- Noticed other **IBMers struggling**
- Shared his expertise in a community that grew to 4,500
 - Used social tools to **scale knowledge** to large groups

“I got an epiphany and got smart by getting social and started to share my expertise... The knowledge then began to spread.”

Results

- Successfully **scaled** knowledge sharing
 - Increased happiness and **engagement of Mac-loving IBMers**
- Recognized a need and used social tools to meet it
- Over **15,000 Macs** at IBM today

Communities

This Community Search

New2Blue: Succeeding@IBM

Stop Following this Community | Community Actions

New2Blue: Succeeding@IBM



Overview

Recent Updates

Status Updates

Members

Forums

Blog

Files

Wiki

Bookmarks

Events

Related Communities

Subcommunities

New2Blue - India New Hires

Hires

New2Blue - GCG New Hires

Hires

Community Description

Succeeding@IBM:
New2Blue Community
Going through a unique journey

2014 Deeper Insight
October 14-16

SMARTER COMMUNITIES AWARD
#SocialHRSuccess

Important Bookmarks

- Before joining a SmartCloud session, check this
- Business Analytics for Professionals education now personalized
- Deeper Insight: Global Virtual Conference for New IBMers
- Awareness Month -
- Community - Monthly Newsletters

Welcome to IBM and to New2Blue! Here is where you can get all the help you need, build your network, and share your knowledge. Get started in 3 easy steps:



Introduce yourself on our **Video Wall**: tell your story to other IBMers!



Watch this **two-minute video** to learn how New2Blue can help you.

Members



View All (73152 people)

Сообщества для новых сотрудников

Post all your questions in our forums, and get advice from experienced IBMers in our blogs.

Every IBMer is an expert...find the one that can meet your business

Left sidebar menu: Закрепленные файлы, Мои файлы, Совместно используемые со мной, Совместно используемые с другими, Файлы сообщества, Общедоступные файлы, Корзина, Просмотр удаленных файлов, Закрепленные папки, Мои папки, Папки, к которым мне предоставлен общий доступ, Общедоступные папки

SalesConnect mobile HowTo.mp4



Общедоступный | DMITRY V. SHPIL создал 19 мая 2014 г. | Версия 1 | 23,7 МБ
Теги: mobile, salesconnect_ | [Добавить или удалить теги](#)

Мне нравится

[Предварительный просмотр](#) [Загрузить](#) [Передать новую версию](#) [Сделать общим](#) [Добавить в папки](#) [Дополнительные действия](#)

[Комментарии \(0\)](#) [Версии \(1\)](#) **Сведения о файле** [Совместное использование](#)

Создано:	19 мая 2014 г. пользователем DMITRY V. SHPIL	
Обновления:	30 октября 2014 г.	
Размер:	23,7 МБ	
Число пометок Мне нравится:	0	
Ссылка на этот файл:	https://w3-connections.ibm.com/files/form/anonymous/api/library/5720bdf2-b40d-4c08-939c-29f69ad029c7/document/eb0df276-19cc-49fa-8aef-fd6b97d252e7/media/SalesConnect%20mobile%20HowTo.mp4	
Число загрузок:	88 (54 анонимно)	
	ALEXEY TARASOV	Версия 1 от 26.05.14
	ANDREY GUSEV	Версия 1 от 26.05.14
	ANDREY MOROZOV	Версия 1 от 26.05.14
	Anthony J. Bell	Версия 1 от 22.07.14
	ANTONINA O. IAKYMCHUK	Версия 1 от 26.05.14
	BAKHUN, TATIANA S (Сергеевна) (неактивный)	Версия 1 от 26.05.14
	Brian Ward	Версия 1 от 29.07.14

Мобильность в обмене знаниями

MTS RUS 16:32

Назад Сообщество

ICS in CEE
Обновлено пользователем Jeffrey T. Becker
Изменено | Сегодня 13:18

Обновления Приложения

Пользователь Jeffrey T. Becker создал запись [Arrow Poland](#) в операции [Channel Development Activities](#).
Сегодня 13:18

Arrow Poland
Build a plan for Arrow

Пользователь Rahul Gupta обновил запись [4Q Pinline \(Current\)](#) в

Отправить сообщение для сообщества

MTS RUS 16:34

Сообщество Блог

Я поддерживаю это. 3 Поддерживающие

21 авг. 2013 г.

Сделать это сообщество более ОТКРЫТЫМ

VICTOR TARANOV
Комментарии: 4 · Просмотров: 28
[Изменить](#) | [Удалить](#)

IBM Connections

Сообщества

ICS in CEE

Описание сообщества
Unleash IBM Collaboration Solutions in CEE by providing business value to Customers, Business Partners, GBS/GTS and delivering ICS revenue objectives every month, quarter and year.

Подсообщества
ICS Marketing in CEE Channel Technical

Операции
Залустите операцию
1. Closing - Weekly Cadence

Важные закладки
Competitive Resources? IBM Collaboration SWAT & Competitive Marketing Community
How Microsoft got its own employees to use Yammer | GITEworld
IBM Center for Social Business
IBM Industry Toolboxes for WebSphere Portal
IBM Social Computing Guidelines
ICS CEE SSL
ICS New Hire Activity
ICS Progression Assets
ICS Sales Talk - Prospecting Ideas
Innovating ICS Social Business Sales
Prospect for Meeting
Role base selling
SharePoint 2013: 7 Features Users are Going to Love
Social Business References
Social Business Stories
Software Value Plus readiness - IBM Collaboration Solutions portfolios
TEC@Moscow - Demo Environment

Блоги

IBM Collaboration Solutions RCIS

Сделать это сообщество более открытым

3 Голосов подано

Сейчас наше сообщество имеет тип **Restricted**, то есть всё, что в нём написано, видно только членам сообщества. Но многое полезно знать коллегам из других подразделений. Предлагаю перевести сообщество в **Moderated** (видно всем, писать могут только члены сообщества, вступление в сообщество по заявкам). А для публикаций, которые по каким-то причинам должны быть видны только членам сообщества (такие вообще будут?), можно сделать подсообщество типа **Restricted**. Назвать его "тайная комната".

Комментарии (4)

ELENA GRANINA прокомментировал 23.08.2013
Я за. Пусть коллеги тоже видят, как прекрасны наши решения.
Постоянная ссылка на комментарий | Ответить | Дополнительные действия

ELENA VERESHCHAGINA прокомментировал 04.09.2013
Изначально сообщество создавалось только для внутреннего пользования ICS Russia team, поэтому мы его и сделали закрытым. Но действительно со временем задачи его изменились и мы действительно уже собрали определенное количество актуальной, важной и полезной информации по нашему бренду, которой пора делиться с другими. Поэтому я уже пыталась его смодерировать, но не поняла как это сделать(((хоть я и owler, но не понимаю как это сделать. В действиях над сообществом вижу только: отправить эл.сообщение, выйти из сообщества, удалить сообщество. Подозреваю, что такие права есть у того, кто создавал сообщество, а это был Толя Киреев. Виктор, я тебя сделала owler, если сможешь, то смодерируй сообщество как ты описал.

Профайлы

- Мой профиль
- Моя сеть
- Каталог

Профайлы по имени Поиск



Sørensen, Uffe
IBM Sales & Distribution, Software Sales - IBM Denmark
Social Business & Collaboration Director, EMEA
IBM employee, Regular
LYNGBY, Denmark - Местное время: 18:44
45-2880-8877 - uffe@dk.ibm.com - Uffe.Sorensen/Denmark/IBM@IBMDK

Состояние Sametime недоступно

Contact Me

- Отправить письмо
- Пригласить в мою сеть
- Отслеживать
- Общий доступ к файлу
- Загрузить визуальную карточку
- Добавить в избранное

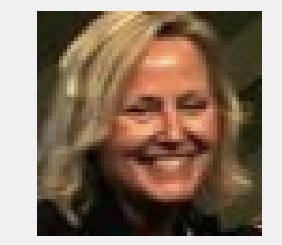
Мои навыки и знания

"Future of e-mail and social collaboration, executive roundtables, sales coach, cloud adoption, customer executive relationships, anything and everything about ICS licensing ..."

- Последние обновления
- Expertise
- Примеры работ

- ### Теги
- #### Отрасли
- Добавить отрасль +
 - 1 automotive +1
 - 1 banking +1
 - 1 government +1
- #### Клиенты
- Добавить клиента +
- #### Продукты и услуги
- Добавить продукт или у +
- #### Другие теги
- Добавить тег +

Руководитель глобальной группы



Chandor, Pamela (Pam)

Руководитель того же уровня

Источник данных: [Расширенные глобальные группы](#)

Местное руководство

- Bartels, Guido
- Mikkelgaard-Jensen, Lars
- Simonsen, Jan
- Sørensen, Uffe

Вся цепочка подчинения
Общий руководитель

Кто нас связывает?

Вы

Coming soon...Code Name Mail Next

Greenwell | Mail | Calendar | People | Communities | Apps

Compose

Upcoming Meetings
in 15 minutes
Conflict
Zim Technology Meeting
Samantha Daryn
888.223.1122
You are required

Waiting On: 3
Research Plan **Late** Budget Request Marketing Research

Needs Action: 3
Price Point Deadline
Due Today
I Own: Gail Chao
Luis, Can you work with Kelly Harder to come up with a price point for Zim Technology?

Social Media Presence
I Own: Natalie Olmos
As part of our plan to increase our social media presence, we're going to begin looking where we think we need to be.

Review Web Content
I Own: Paula Starkey
Hi Luis, We're in the process of writing and organizing the content for our site would you help us to understand the messages.

TUE 23

Next meeting: Checkpoint with China-based team | 5:30 - 7:30 pm | 555-123-1212 | (notes:scoll)

Greenwell | Mail | Calendar | People | Communities | Apps

Compose Gail Chao x

Renovations awards banquet planning
Gail Chao to me, Monifa Shani, Herb Medway, Lukas Geiger, Pierre Dumont, Renata Washington

Hi team,
Renovations wants to throw an awards banquet for some of their top performers this year. I've been in touch with LiPin about dates, and they're close to making a decision.

While we work on that, we need to propose some offsite locations, visual theme, and give them options for catering and prize packages. Reply with your ideas.

Renata, let me know times you're available next week, so you, Nancy, & I can meet about room set-up for their meet & greet and what furniture might need to be ordered.

Thanks,

TUE 23

Now: Checkpoint with China-based team | 5:30 - 7:30 pm | 555-123-1212 | (notes:scoll)

Greenwell | Mail | Calendar | People | Communities | Apps

Compose Gail Chao x

Renovations awards banquet planning
Hi team, Renovations wants to throw an awards banquet for some of thei...

Need client brief for ZetaBank
Hi Nancy, By eod Wednesday, I'll need the client brief for ZetaBank, for ...

Welcome to our newest team member: Paul Clemmons!
Hi everyone,

ZetaBank win!
Hi dream team, I just wanted to congratulate you on the big win with Zet...

Accepted: New Employee Orientation

People on this message

Renata Washington
Store Manager, Operations
Greenwell Company
Baltimore, Maryland, United States
rwashington@greenwell.com
512-555-8020

TUE 23

Greenwell | Mail | Calendar | People | Communities | Apps

Compose Heather Reeds x discount

Re: Discount policies
Hi Nancy, Sorry for the delay! U...

UPDATE on Discount policy for A...
Nancy - I've corrected the in...

Files in Your Mail

File Name	Time	Size
Image_257908841827.png	10:01 AM	21.2 k
Pricing-DiscountGuidel..	10:01 AM	218.6 k

TUE 23