

# **IBM RSS MSR Configuration Utility Readme**

Version 1.0

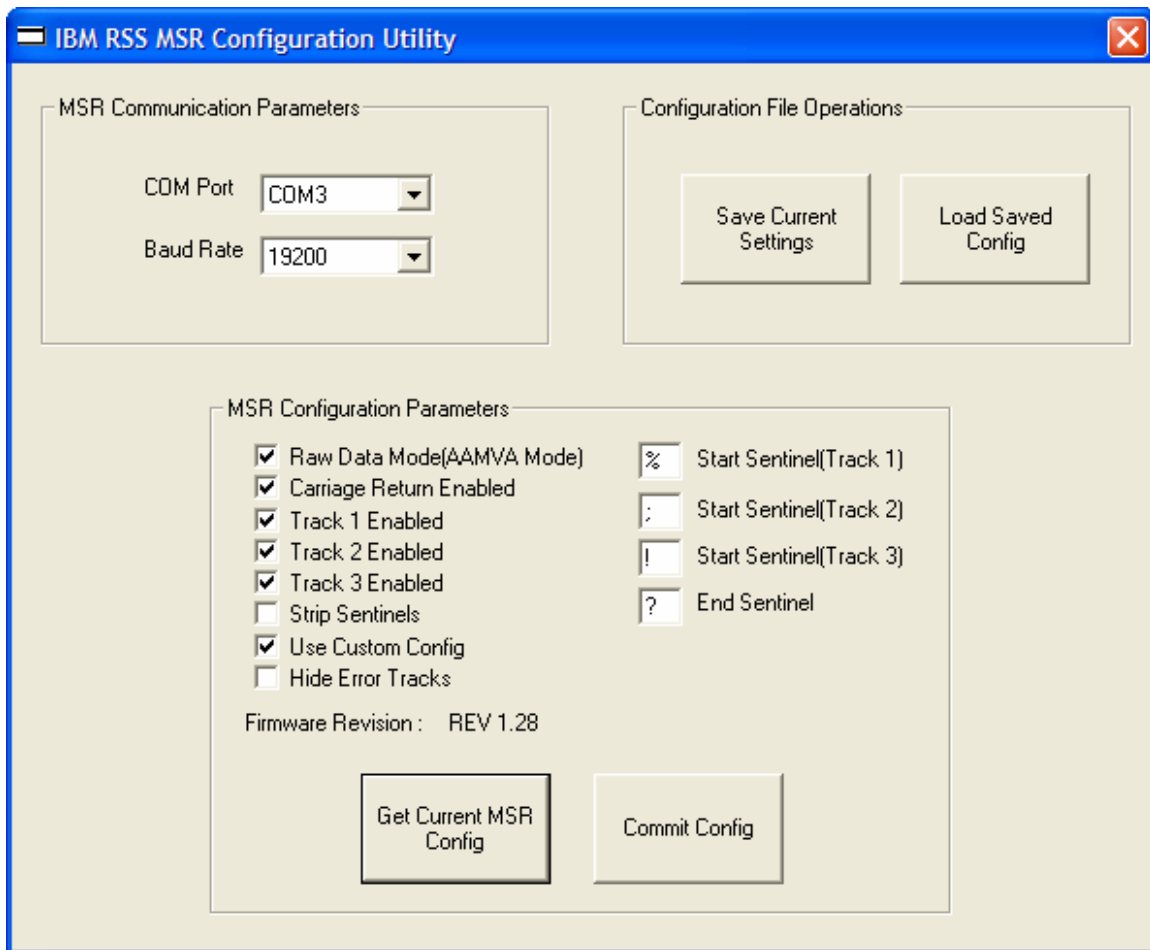
Copyright IBM© 2007

## **Overview**

This tool provides a mechanism by which the MSR for the IBM SurePOS 500(xx3, xx4, xx5) and IBM AnyPlace Kiosk(1x2, 1x5, 1x7, 5xx, 7xx, 9xx) can be configured. This tool supports both attended and unattended configuration options.

## MSR Configuration (Attended)

1. Ensure an MSR is attached to the system to be configured.  
Note: MSR **must** be in serial mode. The tool will fail to connect if the MSR is in PS/2 wedge mode.
2. Double-click the executable to invoke the tool.



*Screenshot of IBM RSS MSR Configuration Utility*

## Configure the MSR

Setup the COM port/ baud rate. For most applications, the default (COM3@19200bps) will be sufficient. However, the tool allows other configuration options if needed.

**MSR Configuration Modification** - If a modification of the current MSR configuration is desired, click the "Get Current MSR Config" button. The tool will connect to the MSR and retrieve the current settings. Click the "Commit Config" button to apply the changes to the MSR internal storage.

**Loading Previously Saved MSR Settings** – Click the "Load Saved Config" button. Choose a valid MSR configuration file. The settings saved in the file will immediately appear in the tool. Click the "Commit Config" button to save these settings to the MSR internal storage.

## Configuration Options

This section describes the function of each of the configuration options configurable by this tool. For help while using the tool, move the mouse over any of the "MSR Configuration Parameters" for instant popup help.

Option	MSR Default	Description
Raw Data Mode(AAMVA Mode)	Disabled	When enabled, the MSR returns raw data from each read track. No manipulation of start/stop sentinels is performed.
Carriage Return Enabled	Disabled	A carriage return is appended to each track of data.
Track1 Enabled	Enabled	Returns Track 1(if present) from a swiped card.
Track2 Enabled	Enabled	Returns Track 2(if present) from a swiped card.
Track3 Enabled	Enabled	Returns Track 3(if present) from a swiped card.
Strip Sentinels	Disabled	Strips start and stop sentinels from data returned after a card swipe.
Use Custom Config	Disabled	Enables a custom configuration stored in the MSR. In order for any custom settings to be used by the MSR, this setting <b>must</b> be enabled.
Hide Error Tracks	Disabled	When an error occurs while reading a track from a card, an "E" is returned for that track. Enabling this option prevents the "E" from being sent in response to an error.
Start Sentinel(Track 1)	%	Character which is pre-pended to the start of the returned Track 1 data (if present).
Start Sentinel(Track 2)	;	Character which is pre-pended to the start of the returned Track 2 data (if present).
Start Sentinel(Track 3)	+	Character which is pre-pended to the start of the returned Track 3 data (if present).
End Sentinel	?	Data which is appended to the end of each returned track of data.

## **Save Custom MSR Settings to a Configuration File**

If it is desired to save the current settings shown in the GUI, click the "Save Current Settings" button. Choose unique file name which will be used to store the current configuration shown in the tool.

## **MSR Configuration (Unattended)**

This tool allows the MSR to be configured from the command line. A configuration file is used as the source of the customized MSR settings. The command line format is as follows:

`MSRCFG.EXE <CONFIG.DAT>,<COM PORT>,<BAUD RATE>`

<CONFIG.DAT> - Name of the configuration file relative to MSRCFG.exe

<COM PORT> - COM port where the MSR is located (optional, default is COM3)

<BAUD RATE> - Baud Rate used by the MSR (optional, default is 19200bps)

For Example:

`MSRCFG.EXE CONFIG.DAT,COM4,9600`