

# Integrate IBM Rational ClearCase with Microsoft Visual Studio 2017

## Installation Instructions

Download the appropriate package from the FTP link below to your Rational ClearCase or Rational ClearCase Remote Client host.

If ClearCase or CCRC are installed at the default\* location, then you are good to use the integration package as is. Go to Step 6.

If installed at a non-default location, follow the steps below. This example assumes that you have downloaded CC\_VS2017\_x64.vsix and you are on a 64-bit operating system.

- 1) Rename the downloaded CC\_VS2017\_x64.vsix file to CC\_VS2017\_x64.zip
- 2) Decompress the archive to a temporary location, let us assume the folder to be CC\_VS2017 for demonstration.

- 3) Modify the library paths in pkgdef files to point to the installed location

- a) Search for the following string in the file CTPackage.pkgdef:

- i) "InprocServer32"="C:\Program Files (x86)\Common Files\Rational\ClearCase\CCVSI\bin\CTPackage.dll"
- ii) "Path"="C:\Program Files (x86)\Common Files\Rational\ClearCase\CCVSI\bin"
- iii) "MainPackage"="C:\Program Files (x86)\Common Files\Rational\ClearCase\CCVSI\bin\CTPackage.dll"

Change the path to match the installation path. Save and close the file.

- b) Search for the following string in the file ccvsisearchtoolwin.pkgdef:

- i) "CodeBase"="C:\Program Files (x86)\Common Files\Rational\ClearCase\CCVSI\bin\ccvsisearchtoolwin.DLL"
- ii) "Path"="C:\Program Files (x86)\Common Files\Rational\ClearCase\CCVSI\bin"

Change the path to match the installation path. Save and close the file.

- c) Search for the following string in the file ccvsiwanservice.pkgdef :

- i) "CodeBase"="C:\Program Files (x86)\IBM\RationalSDLC\clearcase\RemoteClient\WANPackage\CcVsiWanService.dll"
- ii) "Path"="C:\Program Files (x86)\IBM\RationalSDLC\clearcase\RemoteClient\WANPackage"

Change the path to match the installation path. Save and close the file.

- d) Search for the following string in the file ccvislanservice.pkgdef (Not required in CCRC only integration) :

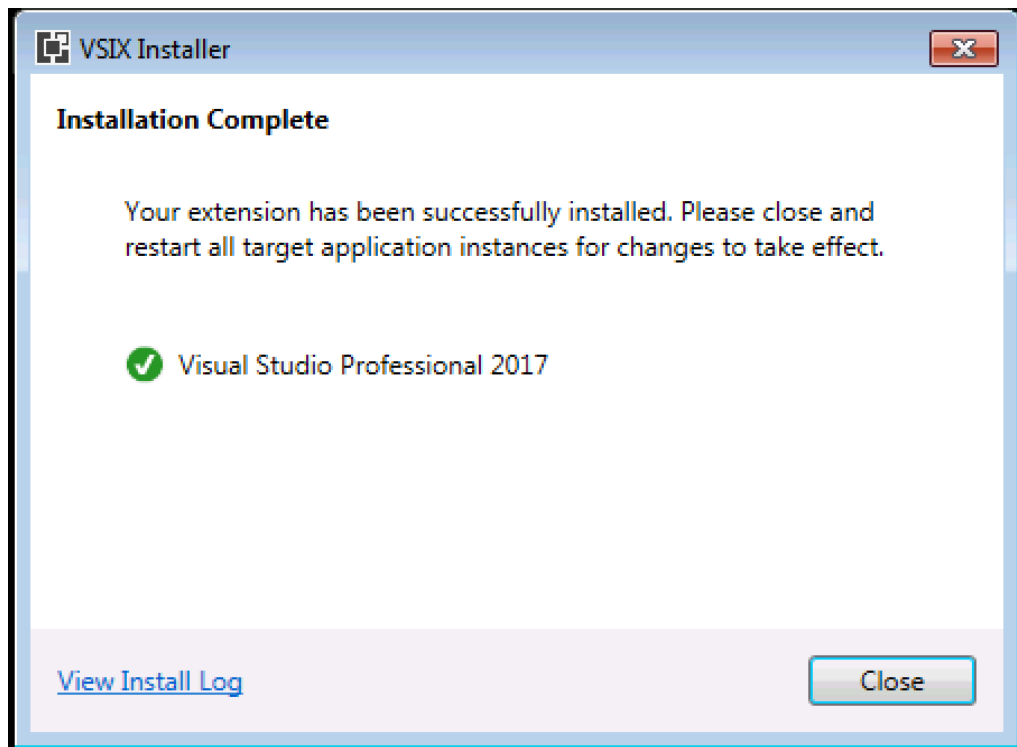
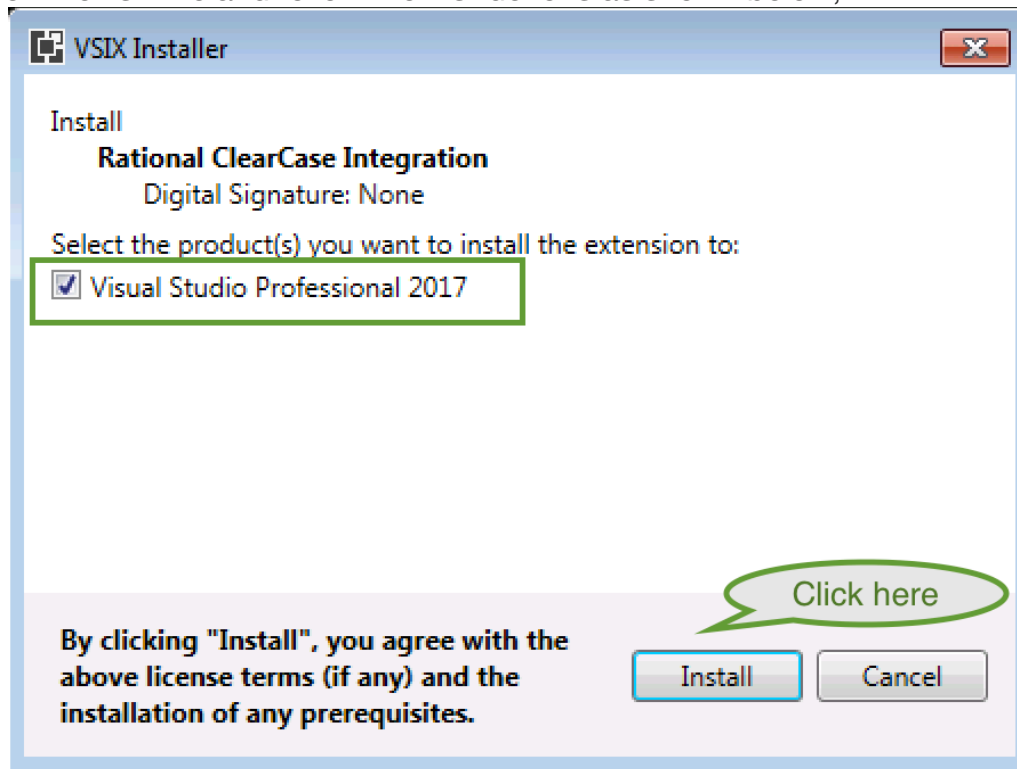
- i) "InprocServer32"="C:\Program Files (x86)\IBM\RationalSDLC\ClearCase\bin\CcVsiLanService.dll"
  - ii) "Path"="C:\Program Files (x86)\IBM\RationalSDLC\ClearCase\bin\"
- Change the path to match the installation path. Save and close the file.

*\*Default location of ClearCase/CCRC Installation*

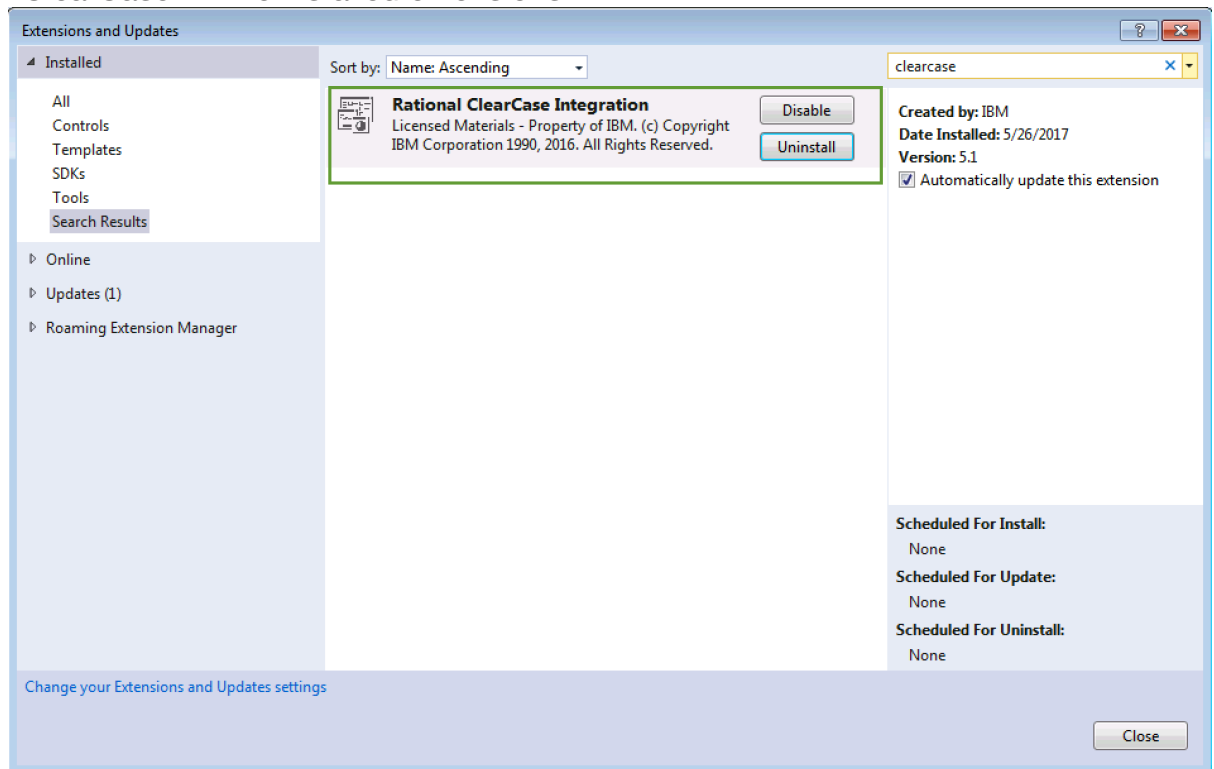
*On a 32-bit OS: C:\Program Files\IBM\RationalSDLC\ClearCase*

*On a 64-bit OS: C:\Program Files (x86)\IBM\RationalSDLC\ClearCase*

- 4) Select all the files in CC\_VS2017 created in Step 2 and select the option to "Send to -> Compressed (zipped) Folder", CC\_VS2017.zip
- 5) Rename the compressed folder to vsix extension, CC\_VS2017.vsix
- 6) Open the vsix file and follow the instructions as shown below,



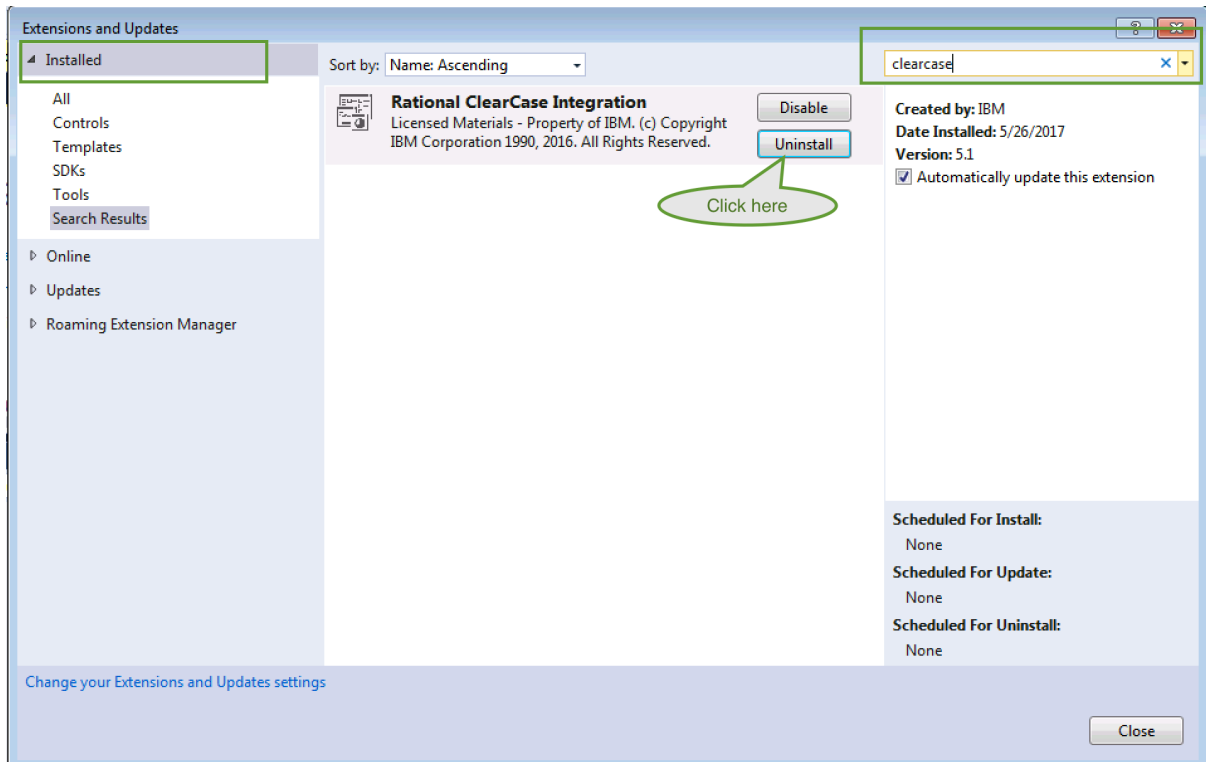
- 7) Open Visual Studio 2017 IDE and confirm that the integration package is installed successfully. Go to Tools -> Extensions and Updates... and search for "ClearCase" in the installed extensions.



## Uninstall Instructions

Follow the instructions detailed below to uninstall the ClearCase/ClearCase Remote Client Integration with Visual Studio 2017.

- 1) Open Visual Studio 2017 IDE
- 2) Go to Tools -> Extensions and Updates...
- 3) Search for “ClearCase” in the installed extensions as shown in the following screenshot



- 4) Click on “Uninstall” of “Rational ClearCase Integration” extension and follow the specified instructions.