

Grow with PLM

Review and Decide Profile Pack

Part of IBM's express portfolio of offerings for medium-sized businesses



Your engineers can bring together designs from multiple sources, and then perform various analyses on the overall design. Not only can you better visualise the entire product using powerful photorealistic imaging capabilities, but also perform space analysis, fitting and motion simulation to digitally verify product fit and performance much earlier in the design stage. Potential problems can be identified and fixed early in the product development process, where the cost of change is much lower.

Focus Industries

- **Industrial Products**
- **Consumer Goods**
- **Consumer Packaged Goods**
- **Electrical and Electronics**

Today's increasingly competitive market is forcing your engineering organisation to explore every opportunity to reduce product development and manufacturing costs. At the same time you are striving to increase product quality and to deliver innovative products. Costs and innovation are largely determined early in the design process – with multiple partners assuming a greater percentage of the overall product design responsibility. Understanding how your part of the design fits with all the others – before actually building the product – can be challenging.

The first challenge is to merge your design with that of multiple partners – all using different CAD systems – into a single environment for review and analysis. The product engineer must be able to analyse how well your design contributes to the expected functionality, cost, and quality of the end product.

The manufacturing process is not the time to discover that assemblies won't fit together, or that one part of the product interferes with another during operation. Similarly, after releasing the finished product to the customer is not the time to discover that the product is difficult to maintain, or even that the product is simply unappealing.

Fortunately, these questions and many others can be answered using the CATIA V5 applications within the Review and Decide Profile Pack.

The Review and Decide Profile Pack helps you to:

- *Bring together designs from multiple partners using multiple CAD systems into a single, integrated review and analysis environment*
- *Reduce manufacturing loss and scrap and ensure serviceability by digitally simulating assembly/disassembly prior to manufacturing*
- *Reduce or even eliminate the number of physical prototypes required by digitally verifying product performance and simulating the kinematics of the product in operation*
- *Streamline business operations by easily sharing a photorealistic image of product design with other business disciplines, such as sales, marketing, and product support.*

Review and Decide Products

These are the products available to be included in the Review and Decide Profile Pack. Optionally, additional Profile Packs can be ordered for any users who may perform a broader role in the organisation or individual products can be added from the standard Product Lifecycle Management (PLM) software catalogue as long as all pre-requisite products are also included in the order.



DMU Navigator (DN1)

Perform collaborative digital mock-up review using powerful visualisation, navigation, and communication tools.



DMU Space Analysis (SP1)

Perform DMU verification using interference detection and 3D geometry comparison tools.



DMU Kinematics Simulator (KIN)*

Define, simulate, and analyse mechanisms for digital mock-ups of all sizes.



DMU Fitting Simulator (FIT)*

Define, simulate and analyse assembly/disassembly operations for digital product validation and animations.



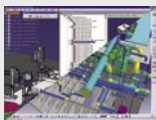
Multi-CAx Plug-in (DSL/DEL/DAL/IDL/DTL/PDL/UDL)

Provide interoperability functions for CAD data to enable MultiCAx design-in-context visualisation. (Plug-ins are available for SolidWorks, SolidEdge, AutoCAD [DXF, ACIS, Inventor], I-DEAS, STEP formats, Pro/Engineer and Unigraphics.)



Photo Studio (PHS)*

Generate high quality photo-realistic digital mock-up images and movies, using a powerful ray-tracing engine.



CATIA – COM 1 to 2 Extension (C12)

Give access to CATIA P2 products from a CATIA P1 configuration for broad scalability and wider business process coverage.

IBM Eurocoordination

Product Lifecycle Management
Tour Descartes
La Defense 5
2, avenue Gambetta
92066 Paris La Defense Cedex
France

The IBM home page can be found at ibm.com

IBM, the IBM logo and the On Demand Business logo are registered trademarks of International Business Machines Corporation in the United States, other countries, or both.

CATIA® is a registered trademark of Dassault Systèmes.

SMARTEAM® is a registered trademark of SmarTeam Corporation Ltd.

Other company, product and service names may be trademarks, or service marks of others.

Any reference to an IBM product, program or service is not intended to imply that only IBM products, programs or services may be used. Any functionally equivalent product, program or service may be used instead.

This publication is for general guidance only. Information is subject to change without notice. Please contact your local IBM sales office or reseller for latest information on IBM products and services.

IBM does not represent or warrant that its products or services ensure compliance with laws. Clients are responsible for compliance with applicable securities laws and regulations, including national laws and regulations.

Photographs may show design models. Image courtesy of Smoby.

© Copyright IBM Corporation 2005
All Rights Reserved.

* Requires CATIA – COM 1 to 2 Extension (C12)