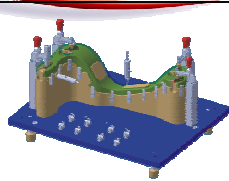



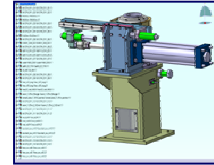
Customer References Overview



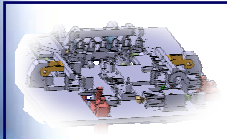
Outcome so Far:



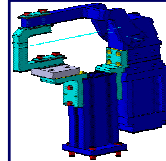
Unior: 
(Welding Fixtures , Press Die, 10 V5 Seats + 3/5 axis NC)



SANYO Machine Works: (Mix P1/P2/SMARTTEAM. 4 in production, 11 on Order)
 **SANYO MACHINE WORKS,LTD.**



Motoman 
(Replaces 16 AutoCAD Seats by V5)

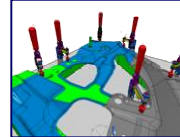


VW Start Pilot in May 2001
Productive Pilot in 2003

Serra Soldarura: (41 CATIA (Winback Autocad) , IGRIP)




DCS Deploys 15 Seats to Replace AutoCAD, ME10

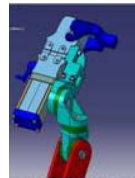


Trimtec : 8 V5 Seats


Taiwan: CMC (11 Seats V5, 11 SmarTeam, Delmia, Enovia PM),
AEF (Aero Engine Fixtures, 11 Seats V5)



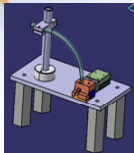
MAN
(20 CATIA, 8 SMARTTEAM)



First Seats in BMW, First Seats at Suppliers



Japan: Aishin and MMC Request Pilotes



Modular Automation
(15 Seats)



Vatech
(V4 & V5, 21 V5 seats)

Korea: First seats in Changil, Obara and NawooTech against Autocad, SolidE, ThinkDesign



Spain: Fata Automation (Welding Fixtures, 5 seats) , **IMI Norgren** (Hydraulic Actuators, 3 seats), **HLS** (Press Die-Jigs and Fixtures) , **ACI** (DOVER Group, Winback Cimatron, Jigs and Fixtures, Die, Mold, 40 seats) , **CBpro** (1 seats) , **Batz** (5 seats in Pilot)

