

V5R11 Structure Enhancements Overview

Thibaud COLAS
Structure dev't team

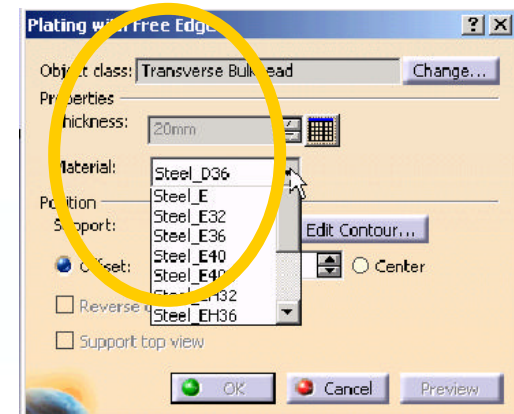
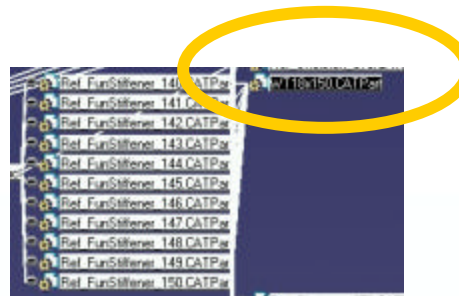


V5R11 Overview

- New product SR1: Structure Design 1
 - Modeler of heavy structural steel Plates & Shapes
- Data Size & Performance improvement
 - Support cache mode
 - Factorize Section
 - Lighter Material catalog (no tiff)
- ENOVIA Integration
 - « EXPOSE » mode only
 - Catalog of Resolved sections declared by PRM
 - Catalog of Materials declared by PRM
 - Support of WBS
- Drawing Extraction
 - Structure specific behavior (SFD, SDD, ESS)

Performance & Data Size Improvement V5R11

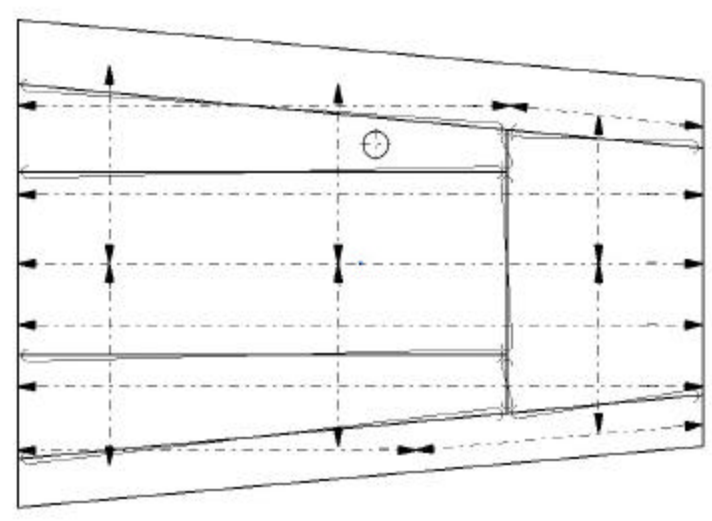
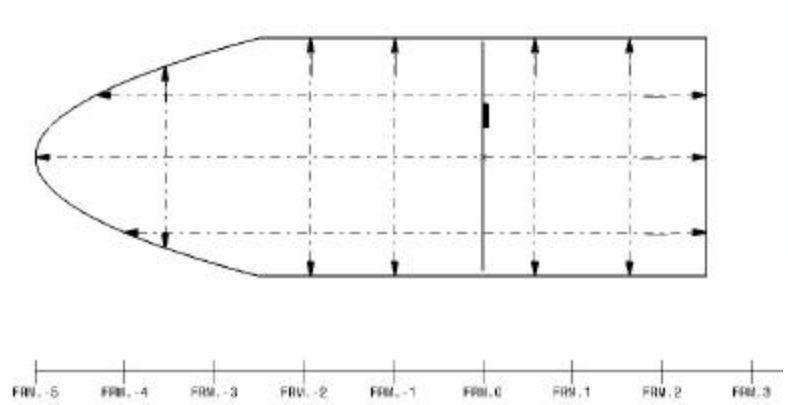
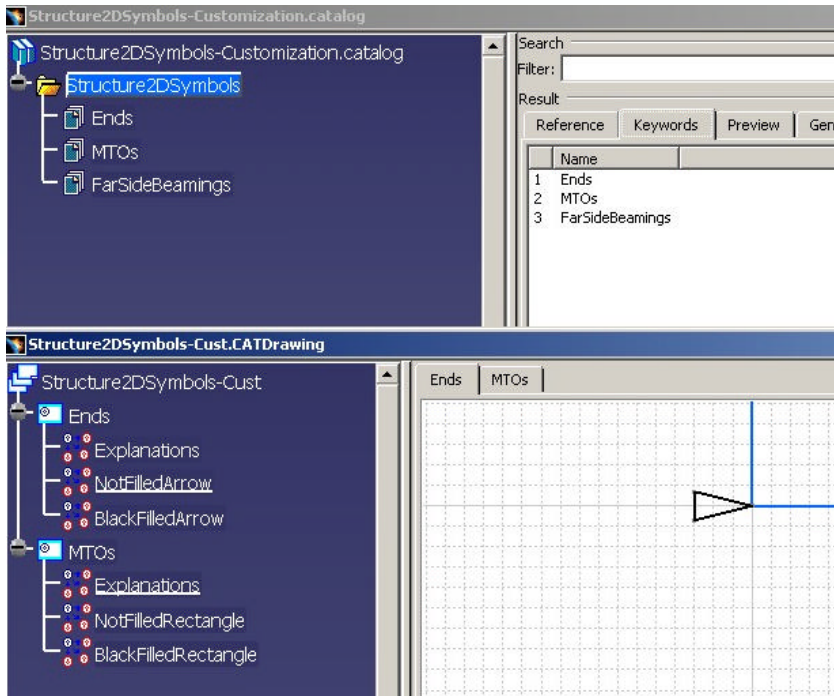
- Factorization of section sketch.
 - Link between stiffeners and section document
- Dedicated catalog of materials declared in PRM.
 - Standard grades of steel w/ only relevant information
- Support design scenarios in Cache mode
 - Auto-Load objects in design mode as needed during the design process (Creation & Edition).



Drawing Production Customization V5R11 (1/2)

- Material Throw Orientation and Tick Mark for Plates.
- Catalog of Symbols (MTO, Extremities of Stiffeners.
- Positioning of the Datum Line
- Clipping of the Weld Seam Symbols and Datum Line
- Support Generative View Style

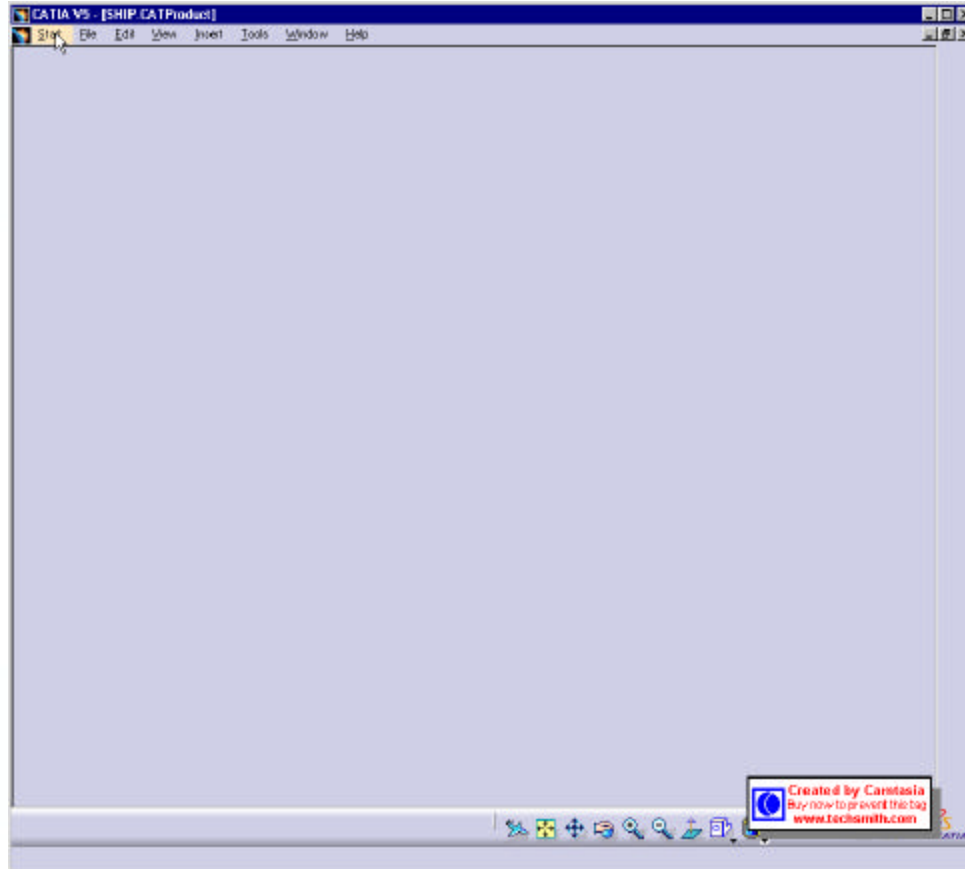
Drawing Production Customization V5R11 (2/2)



YOUR LOGO HERE



Scantling Drawing Extraction SFD



SDD Data Model Simplification

- Number of documents divided by 2
- Overall data size reduced by 10%

