



Innovate

Comes To You Turkey
19 Kasım 2012 Pazartesi Le Méridien Istanbul

Waterfall & Agile Methodologies are Blended at Avesa

Oğuzhan Özavar Canberk Akduygu
Avesa SDLC Expert Rational Technical Consultant





AGENDA

3. Why Release Management
4. Avea's Need for Change
5. Traceability of Change
6. Avea's IT Organization for Handling Change
7. Avea's Need for Effective Release Management
8. Parallel Development With RTC
9. RTC for Integrated Release Management
10. Which Activities are Affected
11. SDLC Flow with RRC and RTC
12. Open Service Lifecycle Collaboration
13. RTC – RRC Integration
14. RTC Extension 1
15. RTC Extension 2
16. Parallel Development Flow
17. RTC in Action (Movie Clip)
18. Avea's SDLC Journey



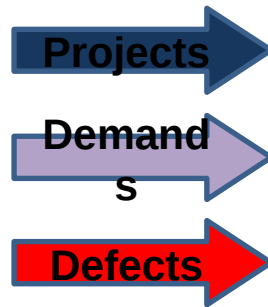
Why is release management so important to us?

How did we utilize Rational products to succeed?



AVEA's NEED FOR CHANGE

Business



Technology Group



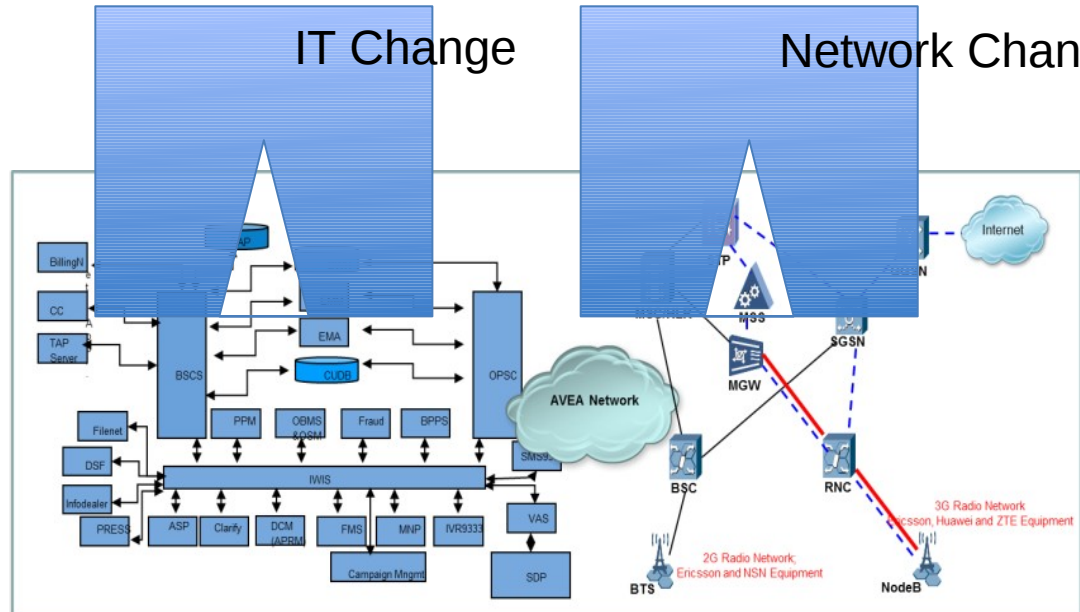
Do not break the existing

Use the resources effectively

Remember Time to Market

IT Change

Network Change





TRACEABILITY OF CHANGE

Release Management is a kind of **barcode system** for software development

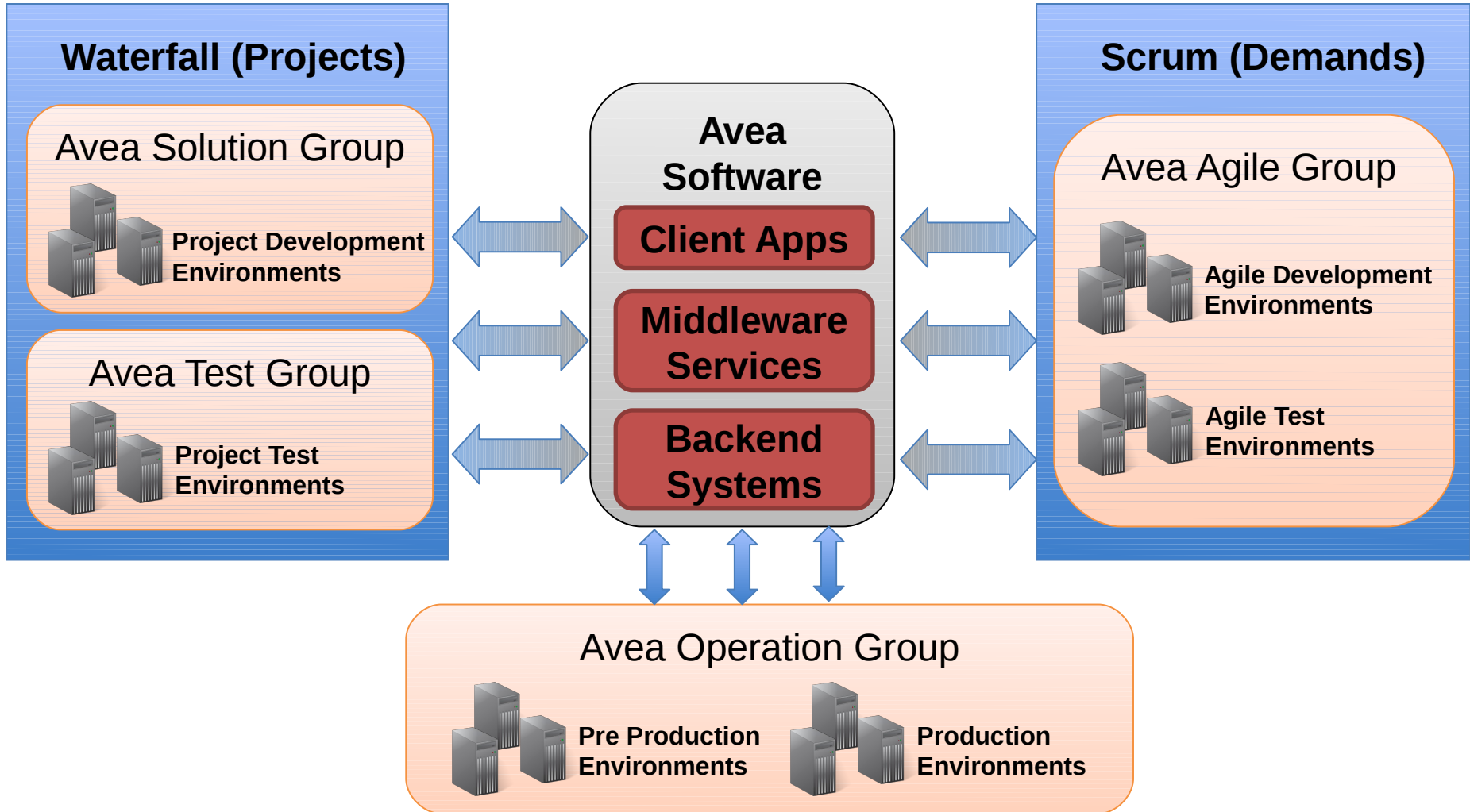
Starts from **business request**, leads to **code change** and results in a **production deployment**

Each activity should be related to the previous one, thus every activity is **originated form a business request**



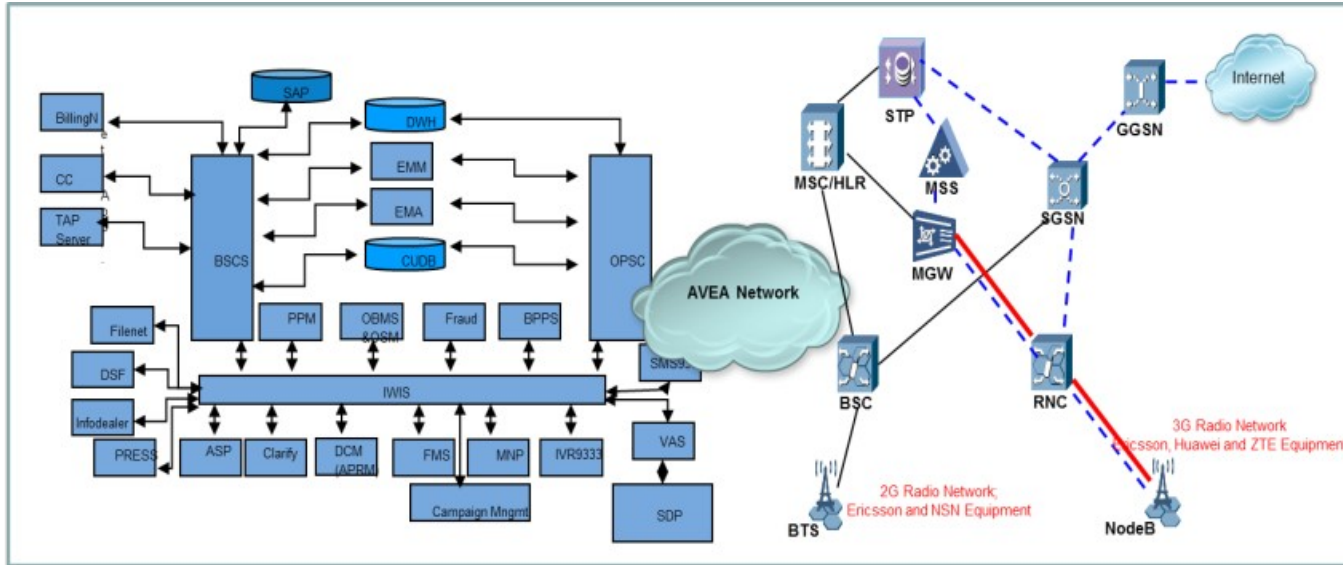


AVEA's IT ORGANIZATION FOR HANDLING CHANGE





AVEA's NEED FOR EFFECTIVE RELEASE MANAGEMENT



Hot Defects



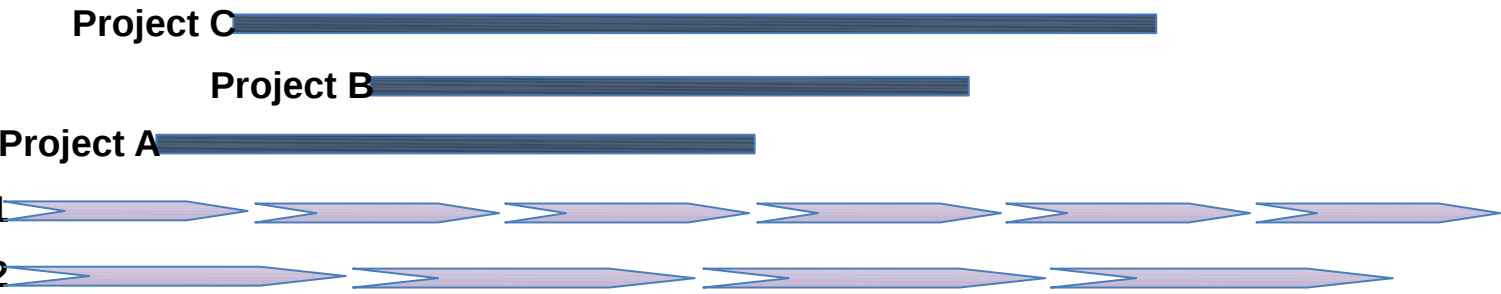
Project C

Project B

Project A

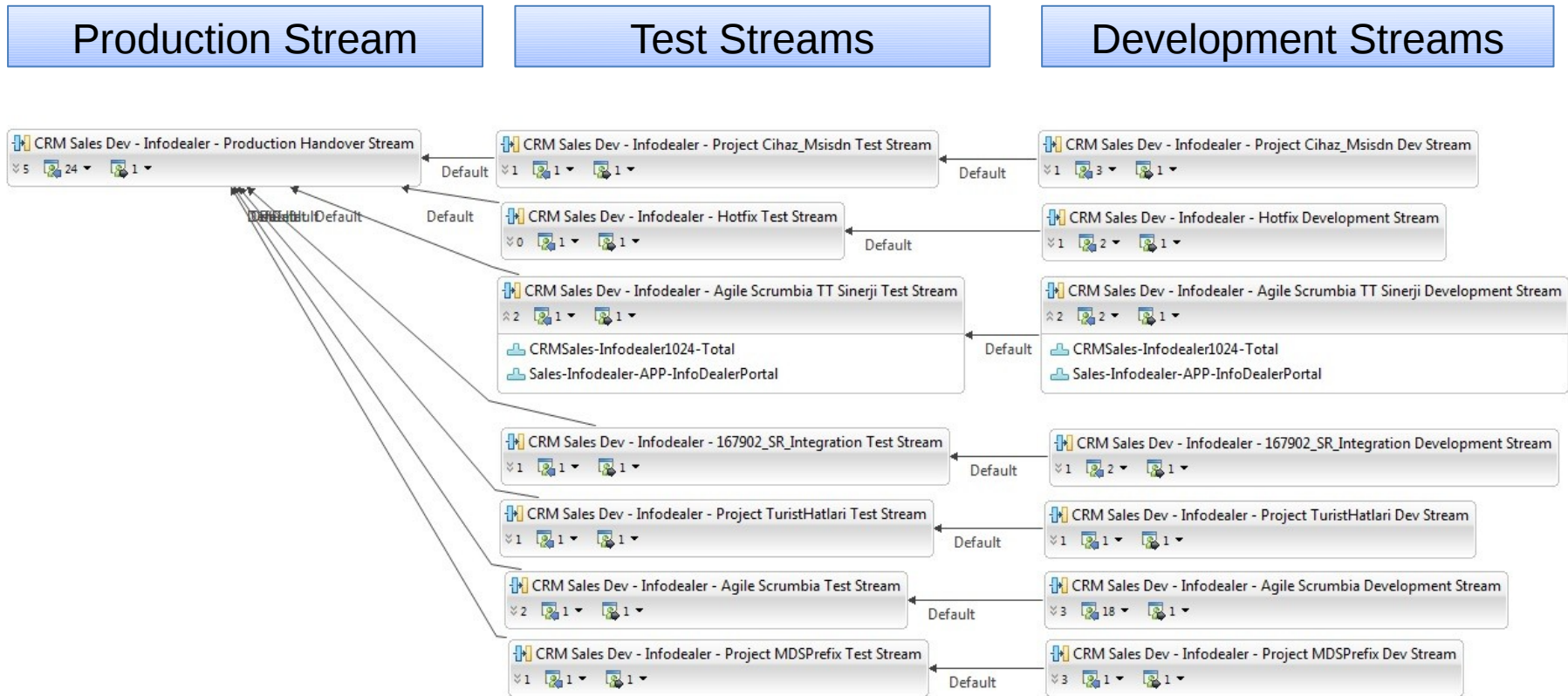
Agile Team 1

Agile Team 2





PARALLEL DEVELOPMENT WITH RATIONAL TEAM CONCERT





TC FOR INTEGRATED RELEASE MANAGEMENT



5 workitem flows for different
Under construction

Associating workitems with code
changes
Continuous builds
versions

Consolidated release planning
of projects and agile sprints

Aut Component level task
management

Email notifications at build
completion



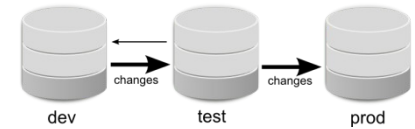
WHICH ACTIVITIES ARE AFFECTED?



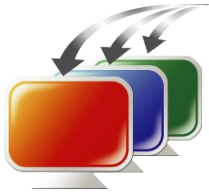
Planning



Coding and Versioning



Test and Production Handover



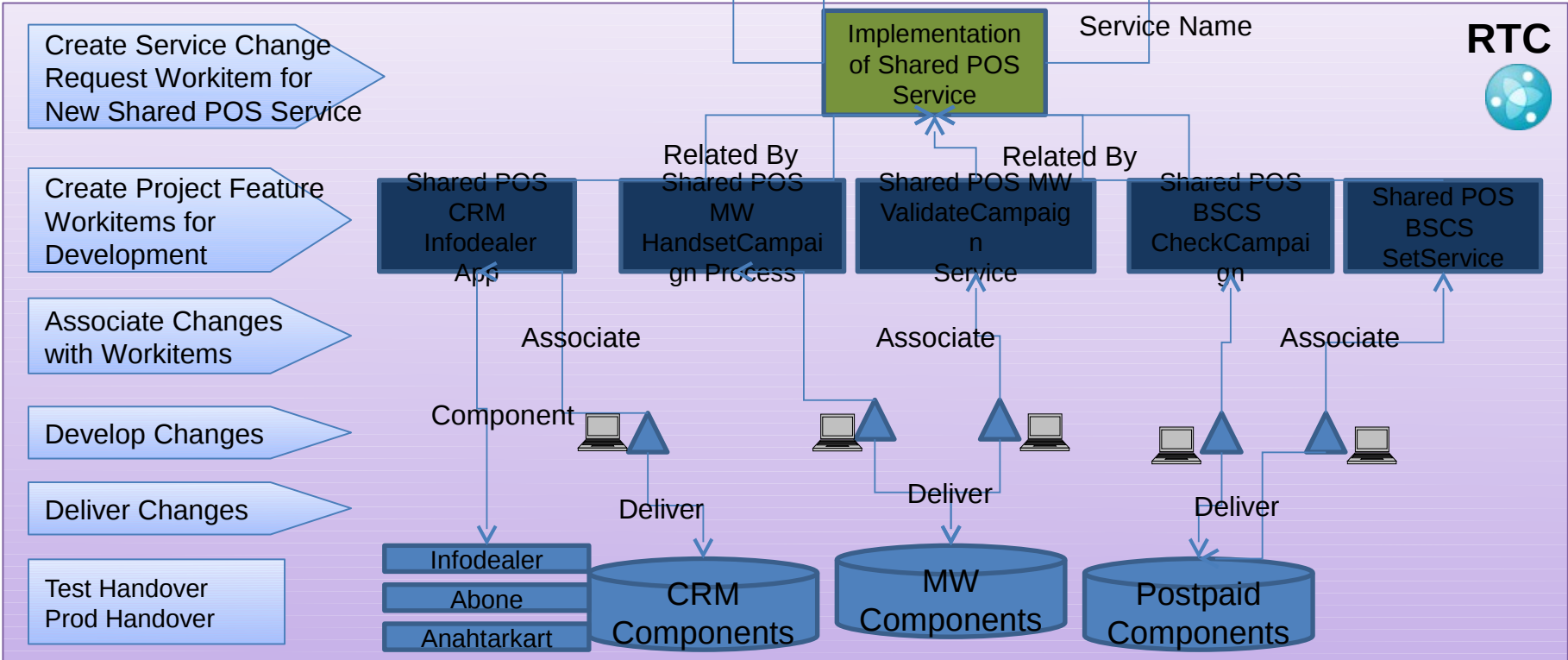
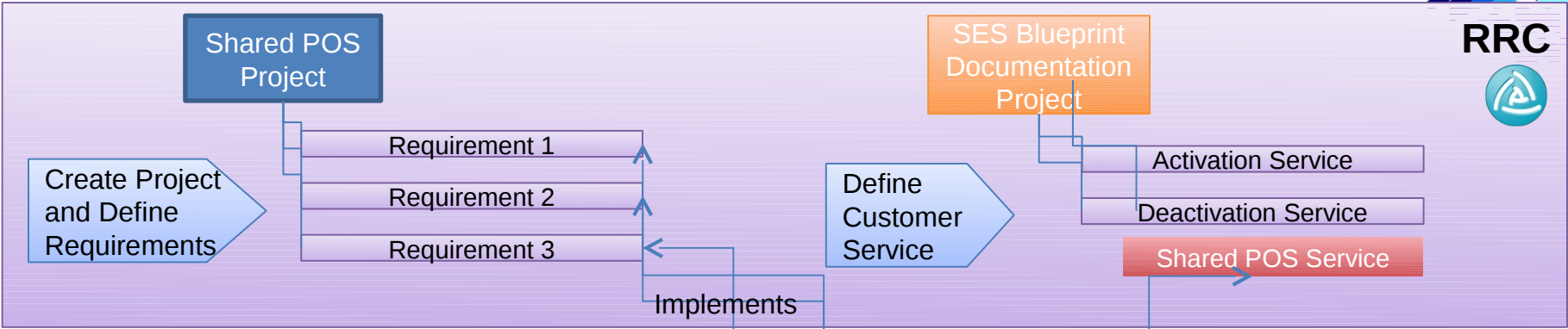
Test and Production Deployment



Quality and Security



Architecture Design





OPEN SERVICE LIFECYCLE COLLABORATION



OSLC standardize the way that software lifecycle tools can share data with one another

IBM Rational tools have Out of the Box integration by using RESTful services

IBM Rational Brand support the integration of Aeva's Rational products



RTC – RRC INTEGRATION

By using RRC RESTFull Service,
we extract data from RRC

```
https://canberk-pc:9443/rm/publish/resources?typeName=Service&projectURI=_mz-gwM8qEeG565jaWiABJA

- <ds:dataSource totalCount="2">
- <ds:artifact attribute:itemId="_0IJ-oB4xEeKu1YbhjU5tgA">
  <rrm:title attribute:itemId="_n1Jp4c8qEeG565jaWiABJA">Müşteri Aktivasyon</rrm:title>
  <rrm:description attribute:itemId="_nyn6WM8qEeG565jaWiABJA"/>
  <rrm:identifier attribute:itemId="_nzqcIs8qEeG565jaWiABJA">248</rrm:identifier>
- <rrm:about>
  https://canberk-pc:9443/rm/resources/_0IJ-oB4xEeKu1YbhjU5tgA
  </rrm:about>
  <rrm:format attribute:itemId="_nv7yxs8qEeG565jaWiABJA">Text</rrm:format>
- <rrm:collaboration>
```

and show it in RTC workitems

Service Change Request <16:55:23> * ?

Summary: Ortak Pos Servis

Overview Subscribers Approvals History

Details

| | | | |
|------------------|--|-----------------------|---------------------------------------|
| Type: | <input checked="" type="checkbox"/> Service Change Request | Project Release Name: | Unassigned |
| Change Type: | New | Owned By: | Unassigned |
| Service Version: | 4.1.1 | | Ayrotek 4.0 (Requirements) |
| Service Name: | Unassigned | | JKE Banking (Requirements Management) |
| Project Area: | Müşteri Aktivasyon | | CyberPark Projesi (Requirements) |
| Team Area: | Müşteri De-aktivasyon | | PROJE |



RTC EXTENSION 1

Capturing the RTC events and creating rules

- Save Workitem
- Build Finish
- Code Deliver

| Operations | Everyone... | Developer |
|---|-------------|-----------|
| Manage Report Folder (server) | | |
| ▲ Source Control | | |
| Deliver (client) | | |
| Deliver (server) | | |
| Deliver Phase 2 (server) | | |
| Modify Component (server) | | |
| Save Change Set Links and Comments (server) | | |
| ▲ Work Items | | |
| Delete Work Item (server) | | |
| Save Work Item (server) | | |

The deliver operation is performed when changes or baselines are delivered from .

Development language is Java

RTC SDK helped use of RTC API

Preconditions and follow-up actions are configured for this operation

Final (ignore customization of this operation in child areas)

Preconditions (5 available):

| Name: | Description: |
|-----------------------------------|--------------|
| Require Work Items and Comments | |
| Require Work Items to Match Query | |

Buttons: Add..., Remove



RTC EXTENSION 2

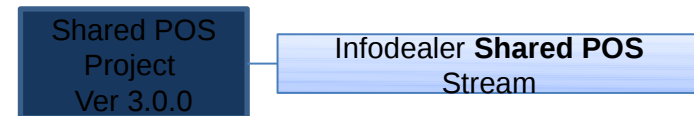
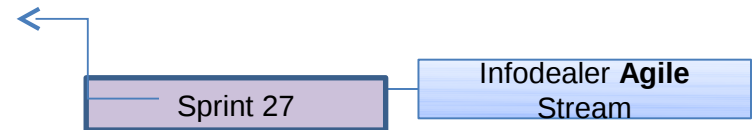
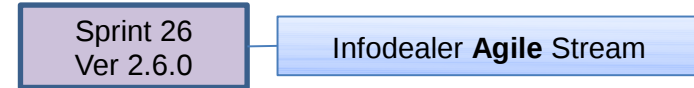
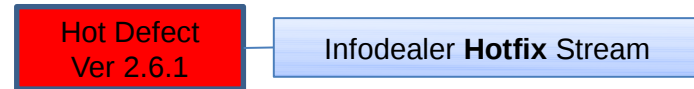
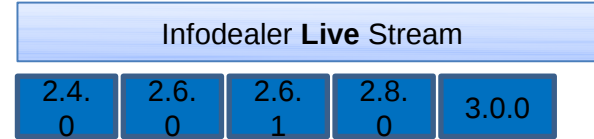
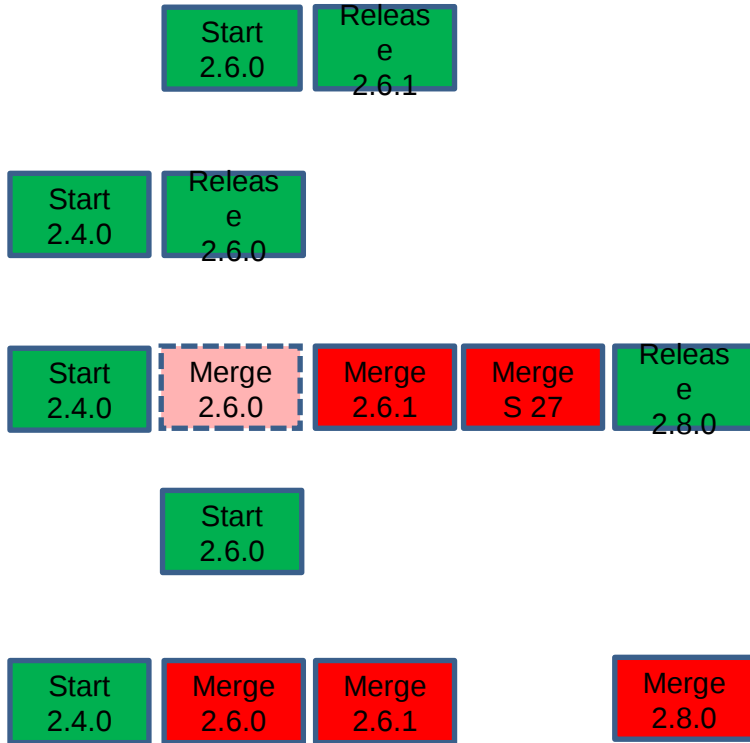
A sample release plan validation from Avea's RTC extension

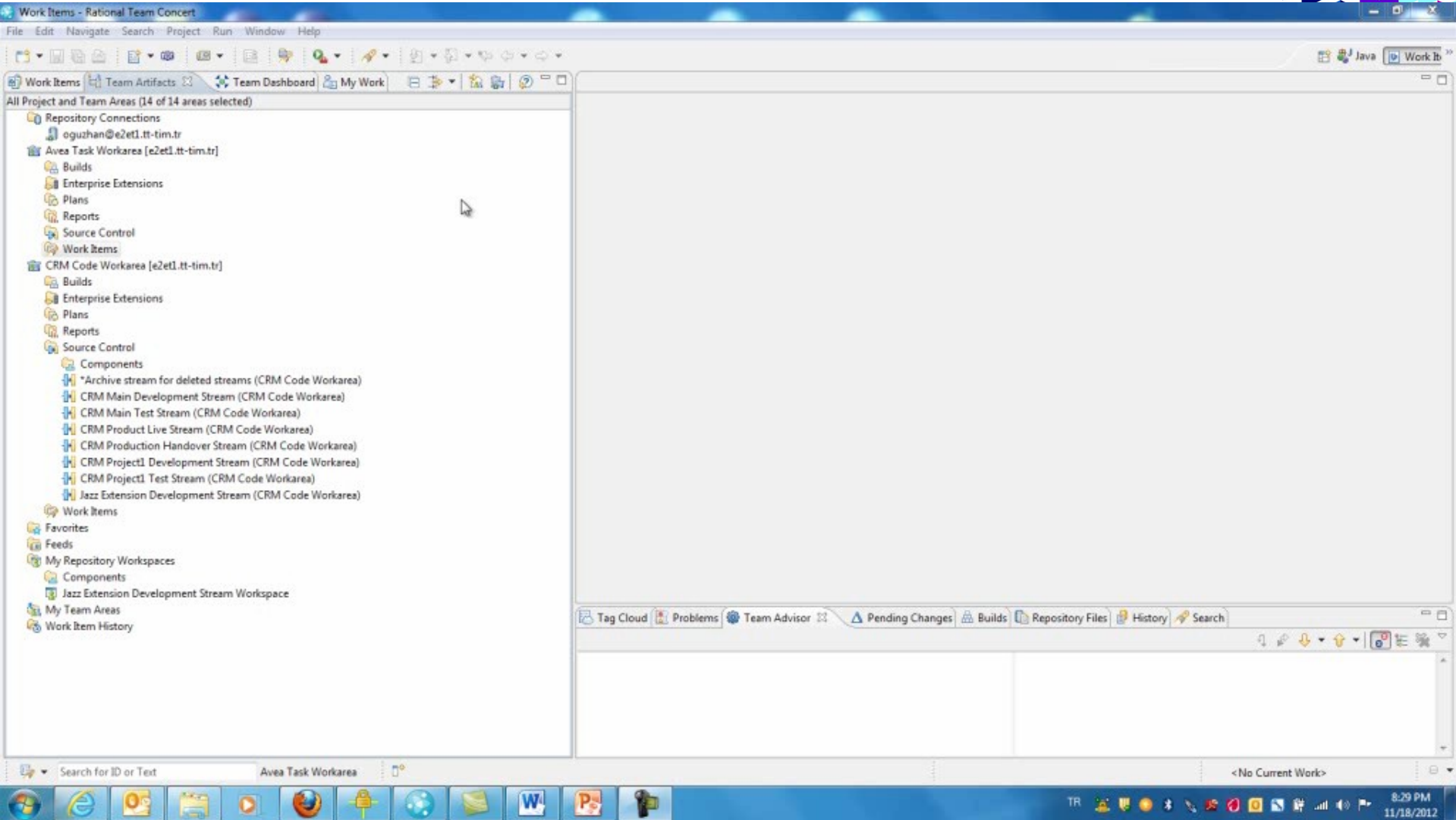
```
} else if (linkedWi != null) {  
    logger.info("Task'in bagli oldugu bir parent workitem var");  
    IWorkItem parentWI = linkedWi;  
    ParentReleaseDate = getObjectFromAttribute(parentWI, AN_Release);  
    ParentFreezeDate = getObjectFromAttribute(parentWI, AN_FreezeDate);  
    ParentDeploymentComponent = getObjectFromAttribute(parentWI, AN_Deployment);  
    ParentProductionVersion = getObjectFromAttribute(parentWI, AN_ProductionVersion);  
    if (compareVersion(childProductionVersion, ParentProductionVersion) == -1) {  
        logger.info("DEVELOPMENT PLANNED adiminda Production versiyonlar karsilastiriliyor");  
        message += EM_DifferentVersion;  
    }  
    if (compareDate(ChildReleaseDate, ParentReleaseDate) == -1) {  
        logger.info("DEVELOPMENT PLANNED adiminda release date'ler karsilastiriliyor");  
        message += EM_DifferentReleaseDate;  
    }  
    if (compareComponent(ChildDeploymentComponent, ParentDeploymentComponent) == -1) {  
        logger.info("DEVELOPMENT PLANNED adiminda Componentler karsilastiriliyor");  
        message += EM_DifferentComponent;  
    }  
}
```



Service Change Request <17:25:32> * ?

Service Change Request ancak bir gereksinime bagli olarak yaratÄ±labilir
Service Change Request yaratilirken Service ismi mutlaka secilmelidir
Service Version eklenmelidir





Innovate
Comes To You Turkey
19 Kasım 2012 Pazartesi Le Méridien Istanbul



AVEA's SDLC JOURNEY



THANK YOU FOR JOINING US

QUESTIONS?