



IBM BusinessConnect

Ključ do rešitev 2014

Misli prihodnost. Bodi sprememba.

GH Bernardin | 23. oktober 2014

IBM BusinessConnect

Ključ do rešitev 2014

Misli prihodnost. Bodi sprememba.

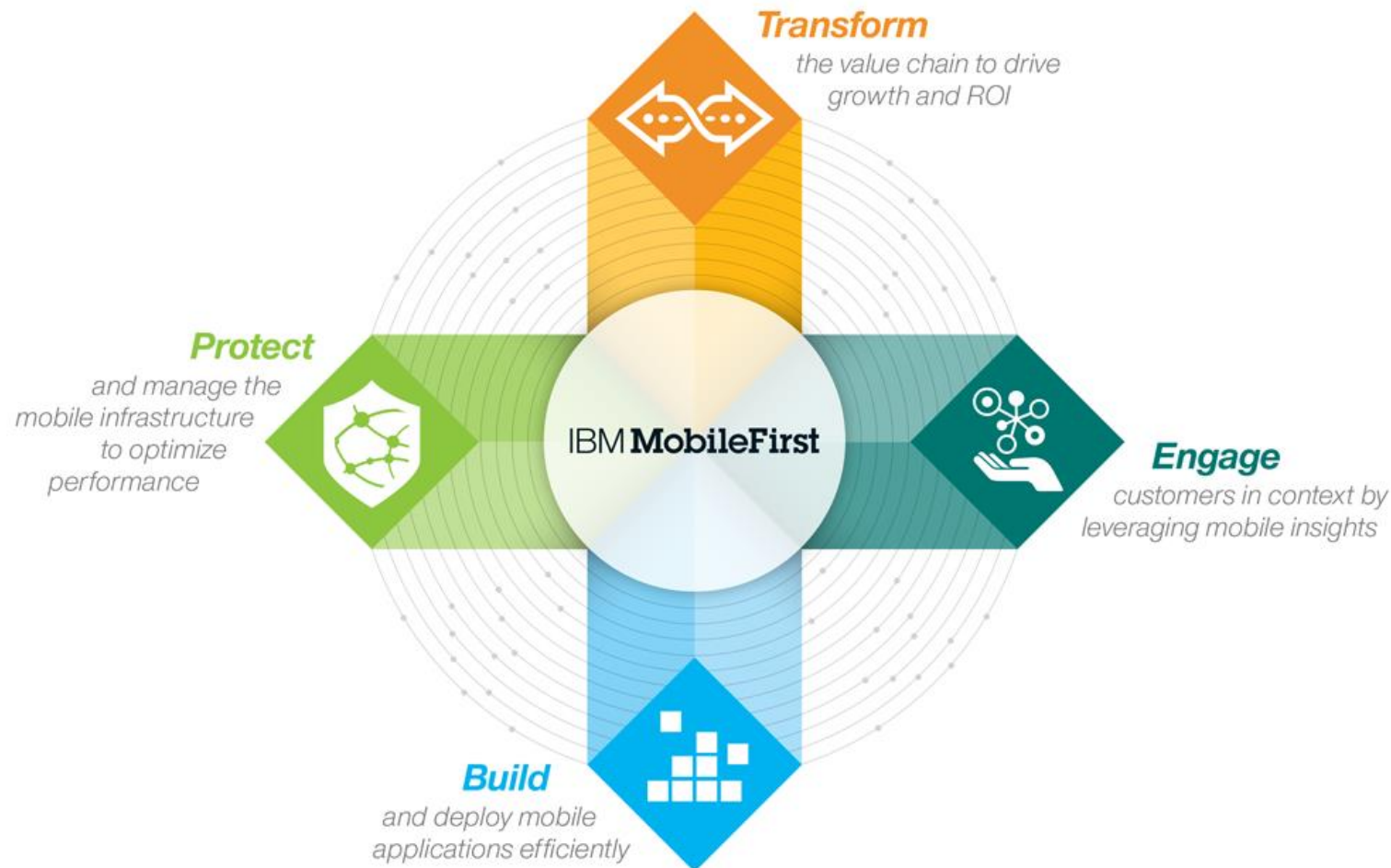


Novosti v razvoju mobilnih aplikacij (Worklight 6.2)

Srečko Janjić, IBM



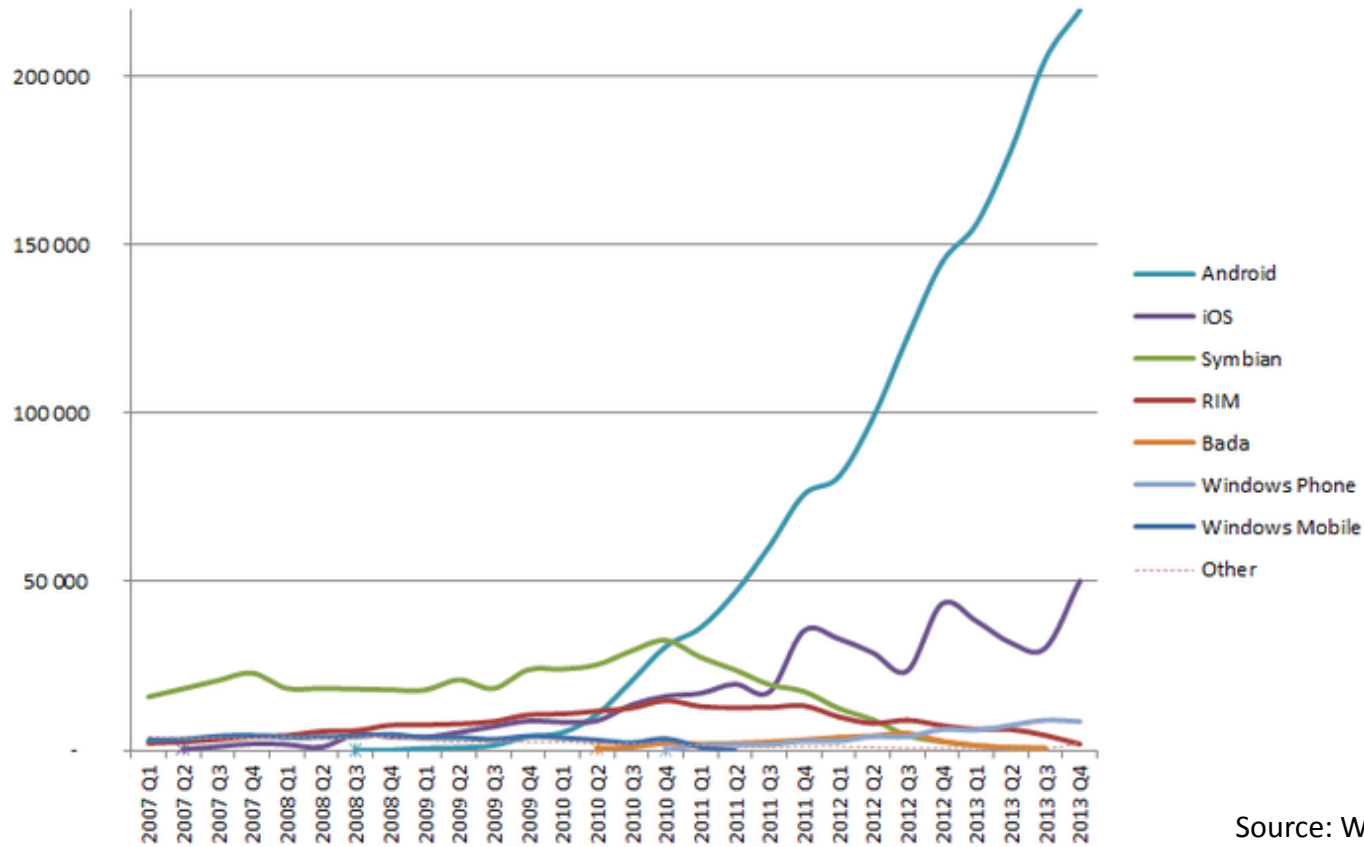
Strateška usmeritev: IBM MobileFirst





Izziv: Pisana paleta platform

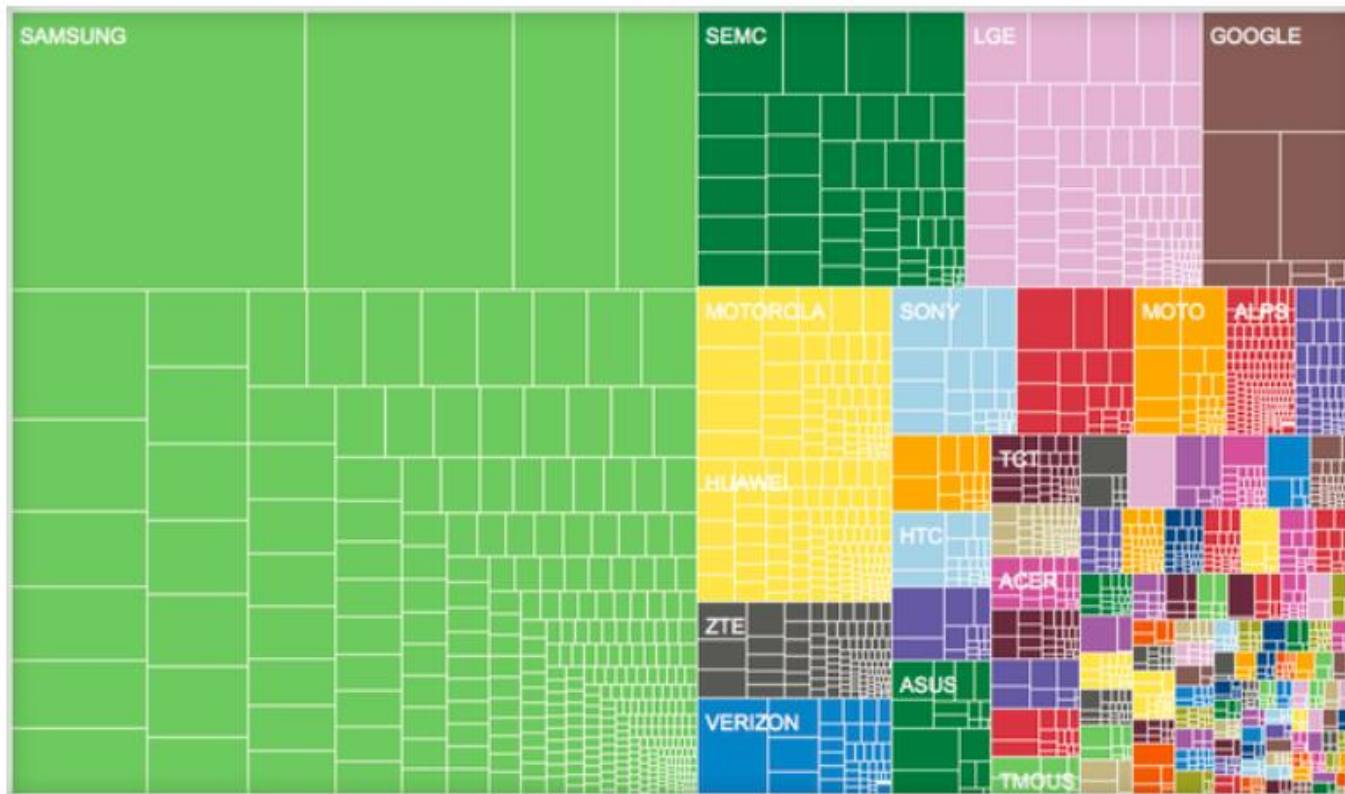
World-Wide Smartphone Sales (Thousands of Units)



Source: Wikipedia



Izziv: Razdrobljenost modelov in tipov



Brand fragmentation in the Android market is immense, but Samsung still leads the charge with 47.5 percent of the market share.

Open Signal



Izziv: Razširitev pojma mobilne naprave



Firefox OS



Wearables



The ultimate IoT controller

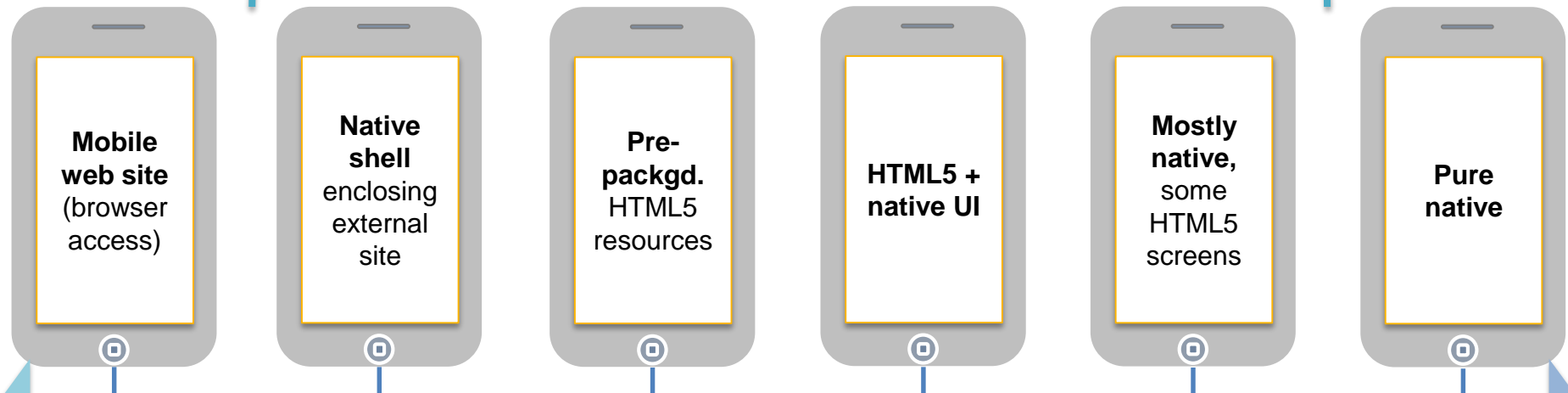


Izziv: Iskanje prave zasnove aplikacije

Pure web

Hybrid

Pure native



Web-Native Continuum

- HTML5, JS, and CSS3 (full site or m.site)
- Quicker and cheaper way to mobile
- Sub-optimal experience

- HTML5, JS, and CSS
- Usually leverages Cordova
- Downloadable, app store presence, push capabilities
- Can use native APIs

- As previous
- + more responsive, available offline

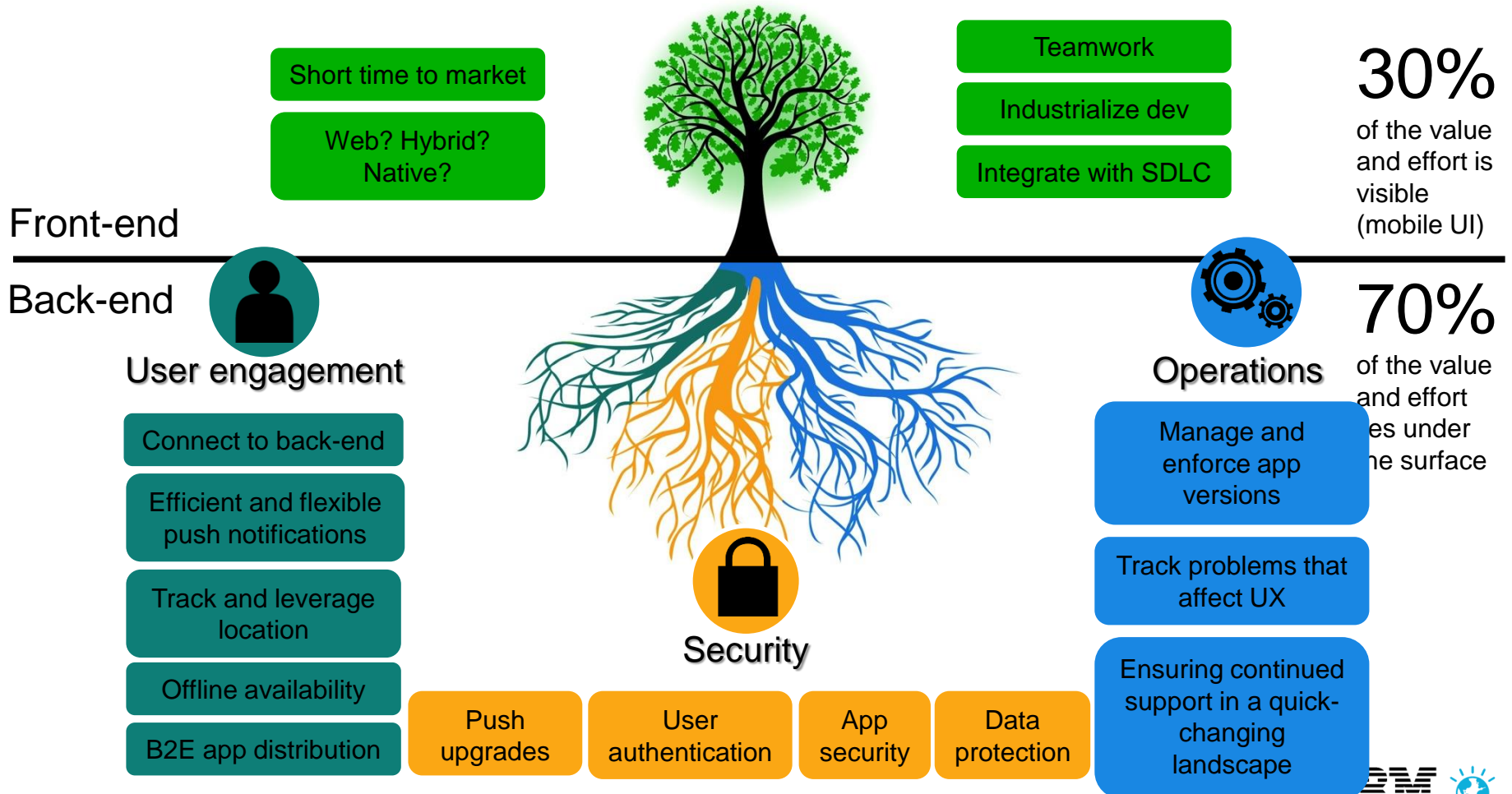
- Web + native code
- Optimized user experience with native screens, controls, and navigation

- App fully adjusted to OS
- Some screens are multi-platform when makes sense

- App fully adjusted to OS
- Best attainable user experience
- Unique development effort per OS, costly to maintain

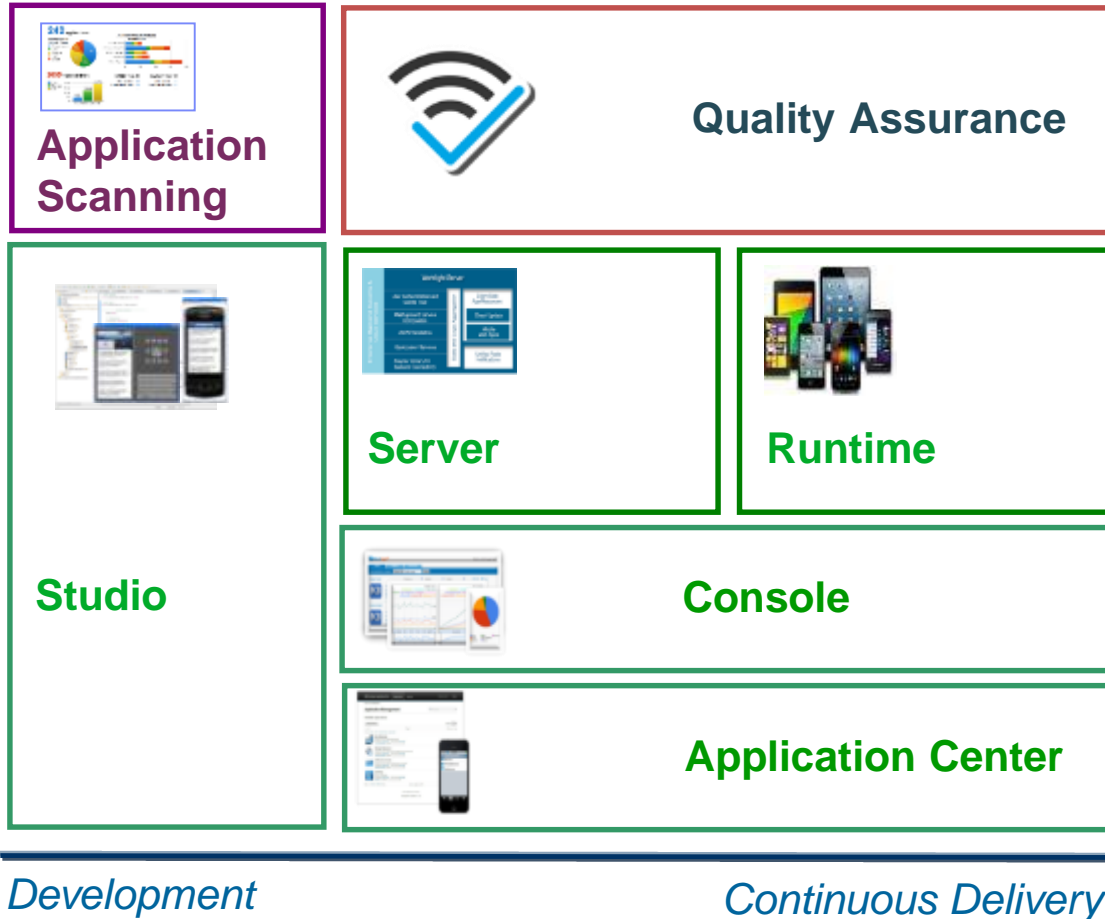


Izziv: Mobilna aplikacija ni samo "UI"





IBM Worklight Platform



Application Scanning

Detect code vulnerabilities at the time of development

Quality Assurance

Collect beta test feedback, crashes and analyze user sentiment

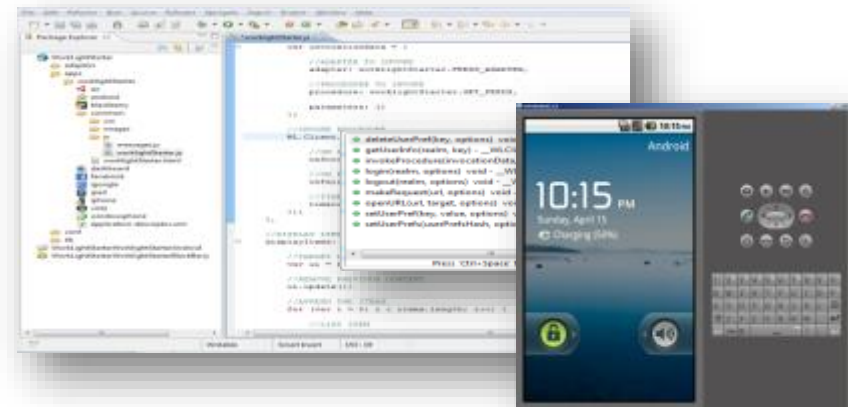
Foundation

Development, Runtime, Operations Console & Private Store



Razvoj: Worklight Studio

- Eclipse-based IDE
- Code assist tools with auto-complete and validation
- Application scaffolding and componentization
- Mobile OS-specific optimization
- Device-specific optimization with Skins
- 3rd-party library integration for HTML5 and native components
- Quick access to simulators, emulators, and debugging tools





Razvoj: "Bring Your Own Tools!"

- In Worklight 6.2 developers have the flexibility to use the development tools of their choice – Worklight Studio is no longer required
- A Command Line Interface (CLI) is provided to enable the use of other development tools
- The CLI provides the following capabilities:
 - Add Worklight SDKs to a native project
 - Create Worklight hybrid projects
 - Add environments to a Worklight hybrid project
 - Create Worklight Adapters
 - Test Worklight Adapters
 - Deploy Worklight applications and adapters to the Worklight Server
 - Start and stop the Worklight Server
 - Launch the Worklight administrative console



Testiranje: Mobile Test Workbench

- Comprehensive, complete, resilient functional testing
 - Android and iOS, native and hybrid HTML and jQuery
 - Record, edit, and run on mobile devices or emulator
 - Same test runs across multiple devices in the platform family
 - Natural language scripts can be used by developers and non-developers alike

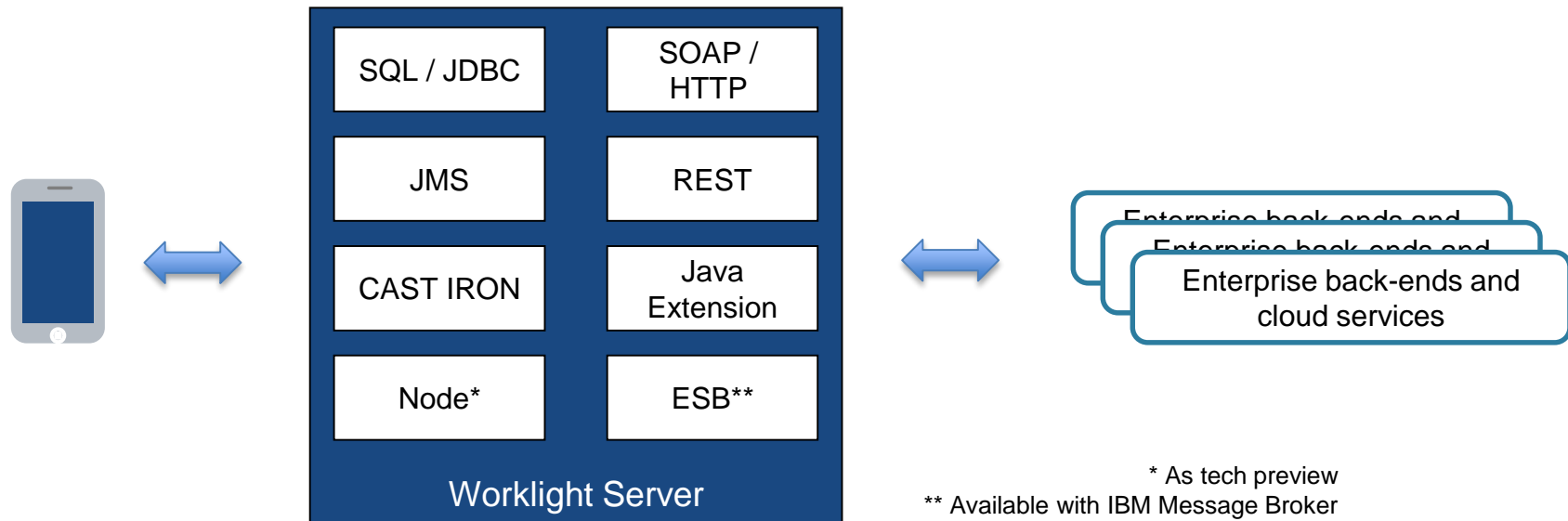


- Simple process

1. Record
2. Author
3. Playback
4. Report



Povezava z zalednimi sistemi: Adapterji



* As tech preview
 ** Available with IBM Message Broker

- Run time**
- Lightweight server-side logic to expose systems of records in a mobile-friendly way
 - Security
 - Analytics
 - Data sync
 - Mobile user engagement

- For developers**
- JS anywhere: Simple APIs for server-side JavaScript development
 - Extensibility: Java API for custom adapters
 - Easy-to-use, consistent client-side API to call any back-end system



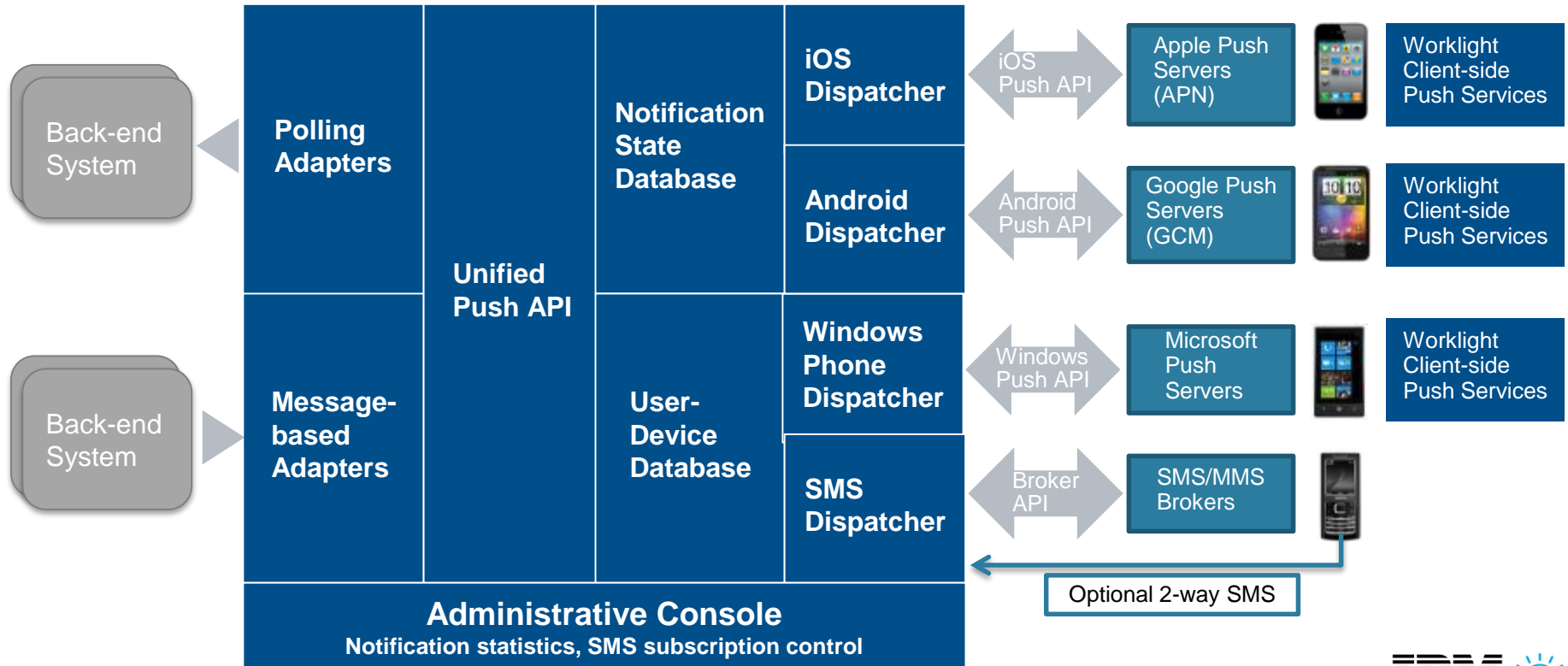
"Service discovery wizard"

The screenshot shows an IDE interface with the 'Project Explorer' on the left. The 'services' folder is highlighted with a red box. A context menu is open over the 'services' folder, with the 'Discover Back-end Services' option highlighted by a red box. The 'Add Service Wizard' dialog is open in the foreground, titled 'Add Back-end Service'. It shows the 'Service type' set to 'Web Service Definition Language (WSDL)' and the 'URL' field containing 'http://localhost:9081/MockService/mockservices/offersService/offersService.WSDL'. The 'File' field is empty. The 'Select Service' list shows 'BankServiceSoap' with a sub-item 'getOffers'. The 'Details' field is empty. The 'Finish' and 'Cancel' buttons are at the bottom right of the dialog.



"Push" notifikacije – unificiran pristop

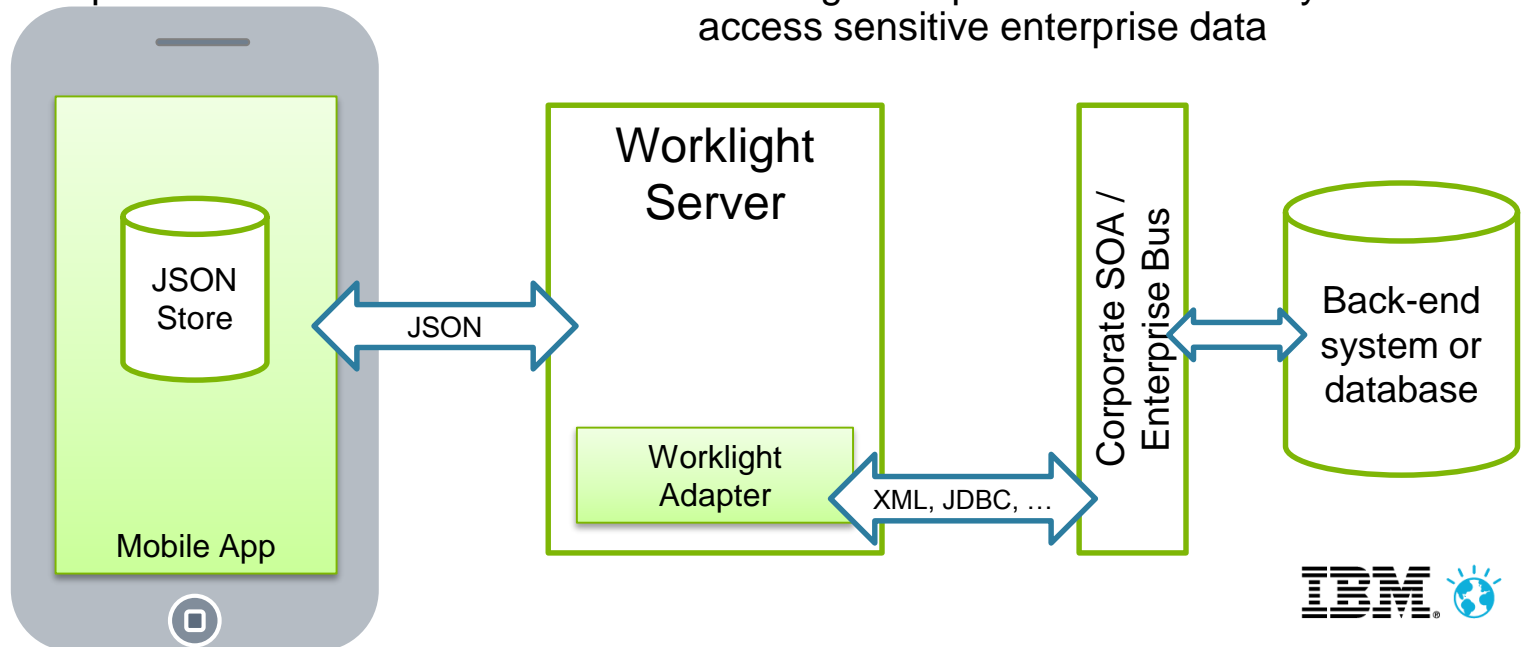
- Uniform access to push notifications providers
 - Register for, notify, and receive a notification via Worklight APIs or SMS
- Register for and send SMS based notifications
 - E.g., for feature phones





"Offline" način: JSON Store

- On-device, mobile database support
 - Embedded JSON mobile database
 - JavaScript APIs to store, query and update the data in offline mode using MongoDB-like APIs
- Encrypt sensitive data
 - Using a key provided by developer or obtained as user's password
 - FIPS140-2-compliant
- Server-to-client Sync
 - Retrieve, store and keep data store up-to-date using adapters
- Client-to-server Sync
 - Simplify write actions on data while the app is offline and send these actions to the server
- Enterprise API-based
 - Leverages corporate API / SOA layer to access sensitive enterprise data





"Direct Update"



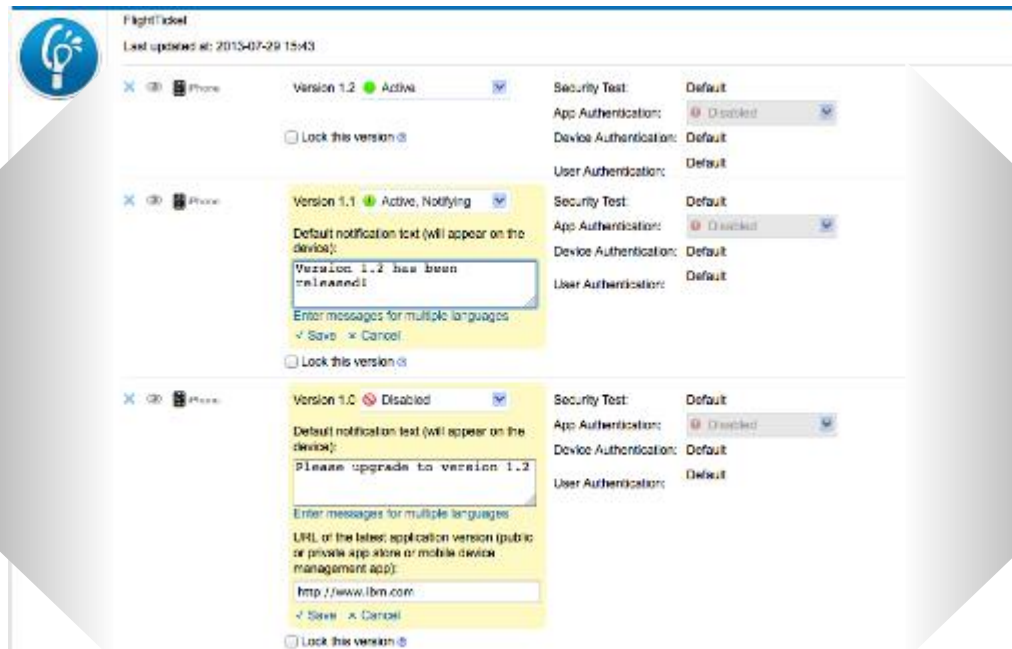
1. Web resources packaged with app to ensure initial offline availability
2. Web resources transferred to app's cache storage
3. App checks for updates on startup and foreground events
4. Updated web resources downloaded when necessary, with user confirmation or silently



"Remote disable"

Remote Disable: Deny access to an app of a specific version on a specific environment

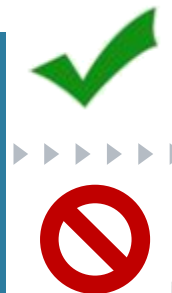
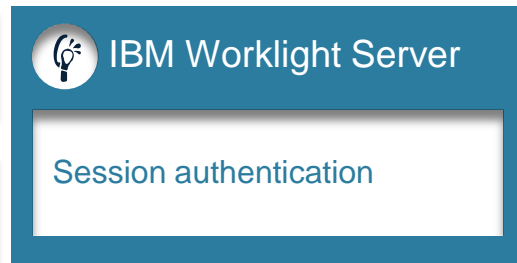
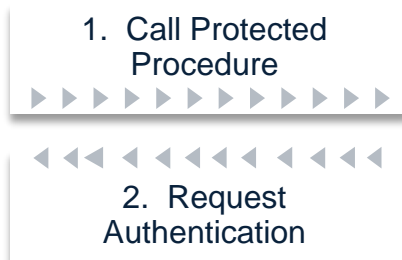
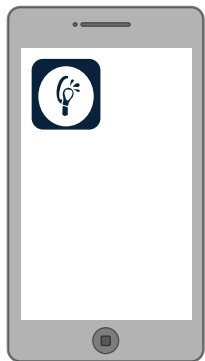
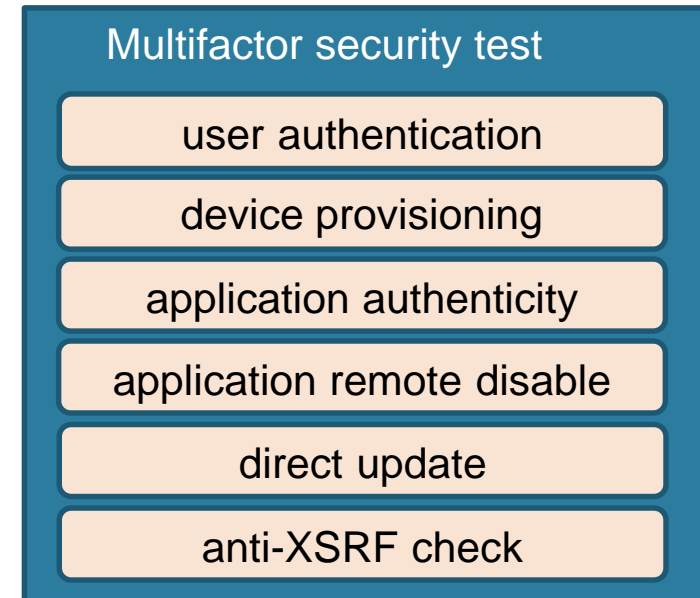
- Ensure users use the latest security fixes
- Avoid using previously installed old versions that are no longer supported





Varnost: Worklight security model

- Goals
 - Controlling access to the protected resources
 - Propagating identity to the backend
- Resources
 - **Application**
 - **Adapter procedure**
 - **Event source**
 - **Static resource**

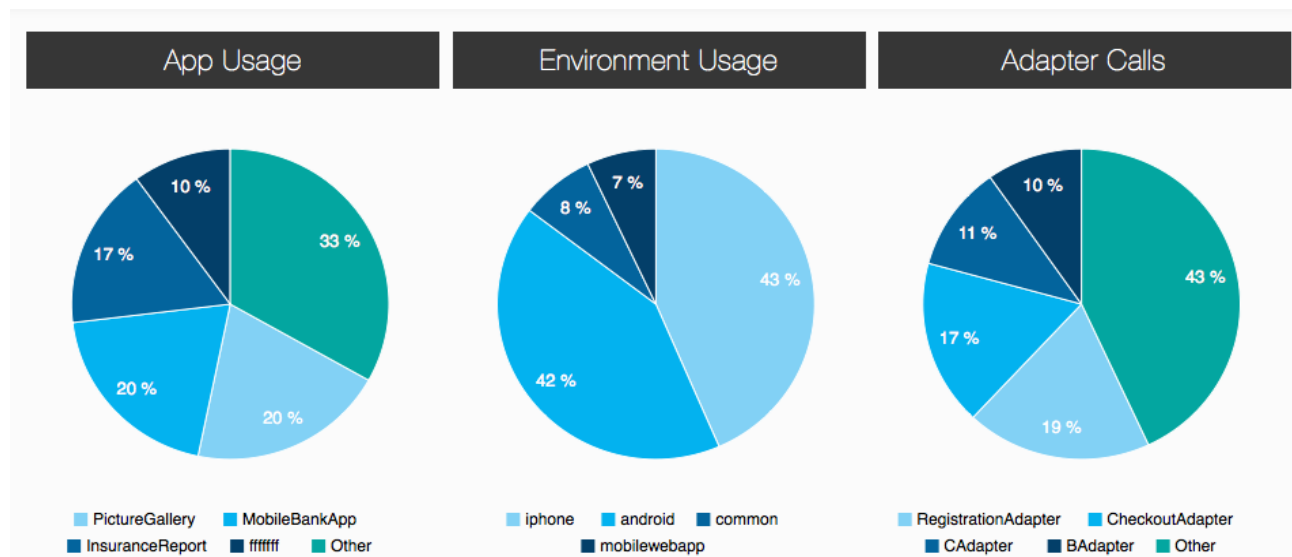




Analitika: Worklight Operational Analytics

- Out-of-the-box analytics address the following:
 - User adoption, device and app properties
 - User actions and called adapter procedures
 - Performance and data usage information
 - Exceptions, crashes, logs, response time
 - Geolocation data

- Analytics component now provided in a WAR for simple install and administration





Distribucija aplikacij: Application Center

- Share apps across developers, testers, and other stakeholders
- iOS, Android, Windows Phone 8, BlackBerry 6 and 7

Developers

- Easily distribute app to testers

Testers

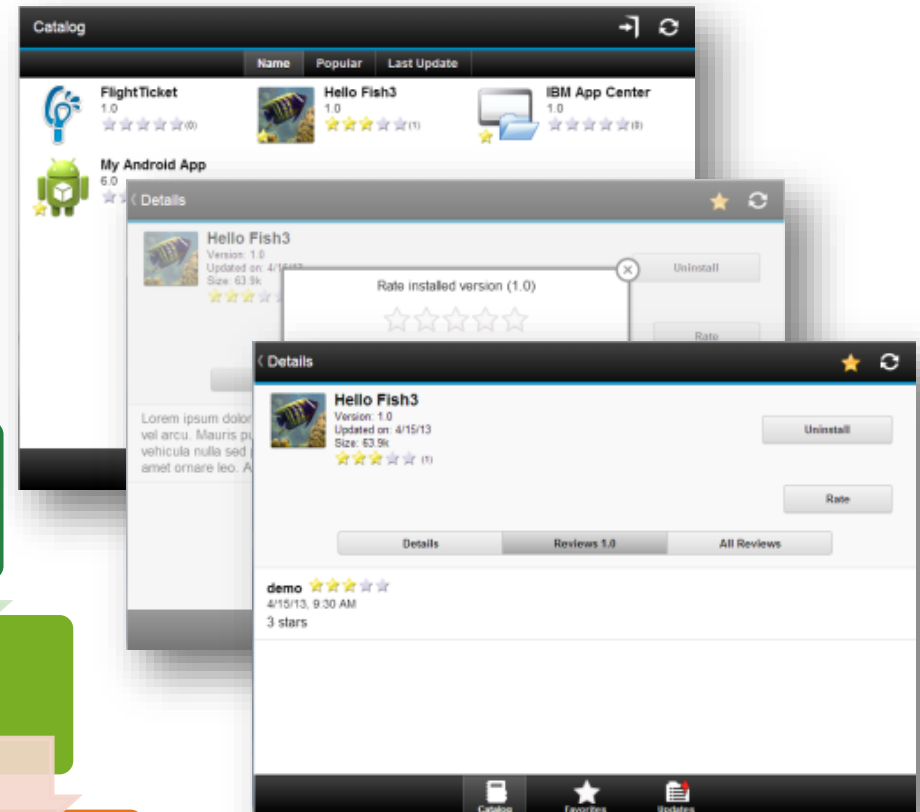
- Easily find apps and versions to test

Testers

- Provide rating and feedback directly from the device

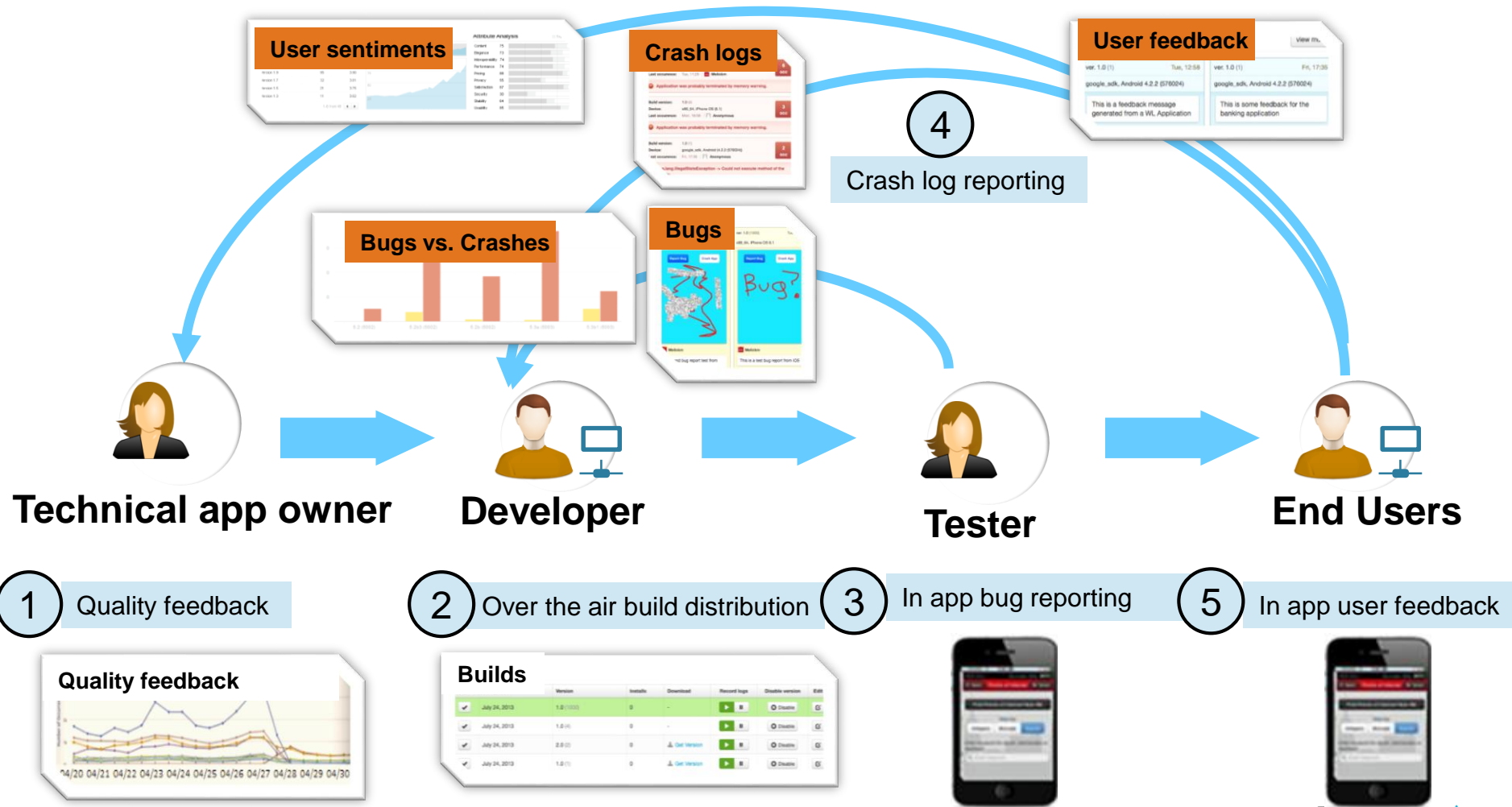
Developers

- Access all feedback in a centralized manner





Mobile Quality Assurance

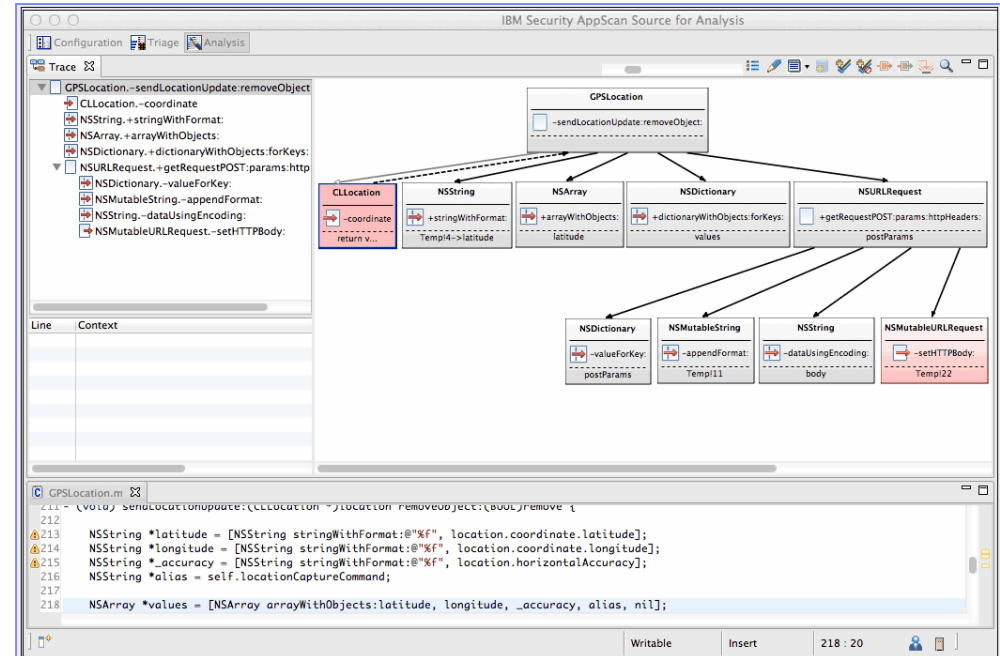




Application Scanning

Ensure mobile applications are not susceptible to malware!

- Support for **Android** and **Native Apple iOS** apps
- Security SDK research & risk assessment of **over 40k** Android and iOS APIs
- **Mac OS X** platform support
- **Xcode** interoperability & build automation support
- **Full** call and data flow analysis of
 - Objective-C
 - JavaScript
 - Java
- **Identify** where sensitive **data** is being **leaked**



IBM BusinessConnect



Ključ do rešitev 2014

Misli prihodnost. Bodi sprememba.

GH Bernardin | 23. oktober 2014

Hvala !

<http://www.ibm.com/developerworks/mobile/worklight/>