

Ulla-Britt Fagerström - Senior lösningsspecialist, IBM Business Analytics
22 maj 2013

Att utveckla och skapa en effektiv och dynamisk process för konsolidering och rapportering



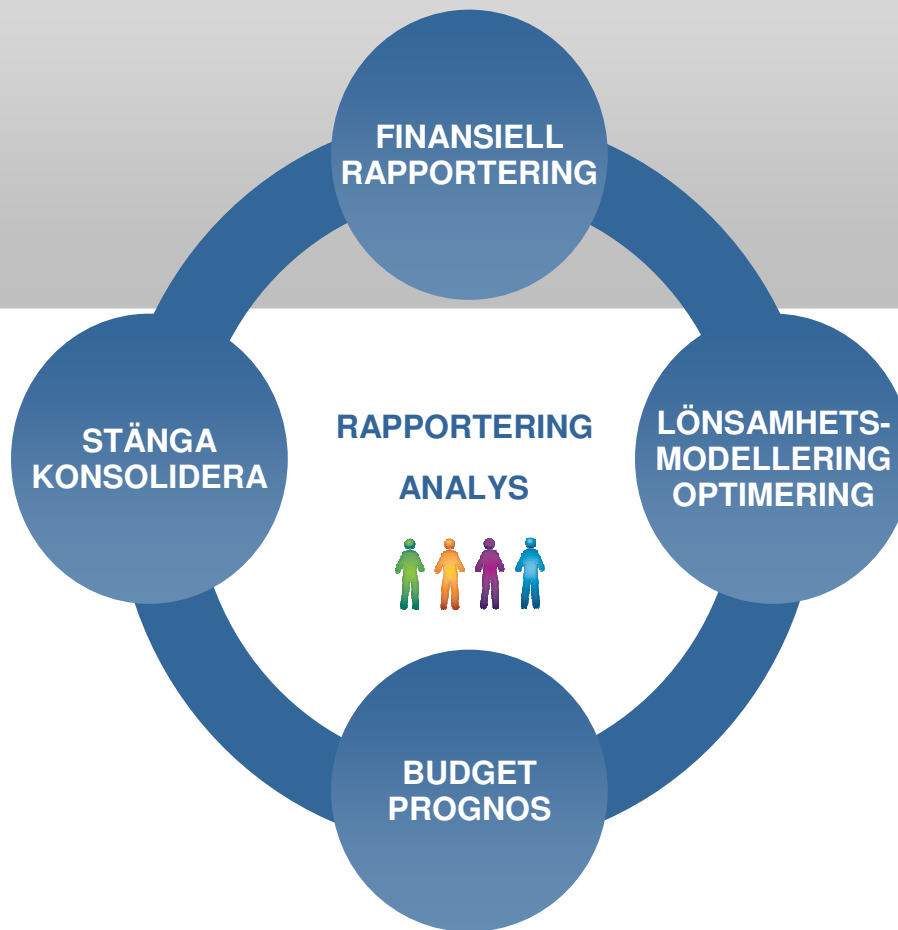


Ulla-Britt Fagerström - Senior lösningsspecialist, IBM Business Analytics
22 maj 2013

Att utveckla och skapa en effektiv och dynamisk process för konsolidering och rapportering

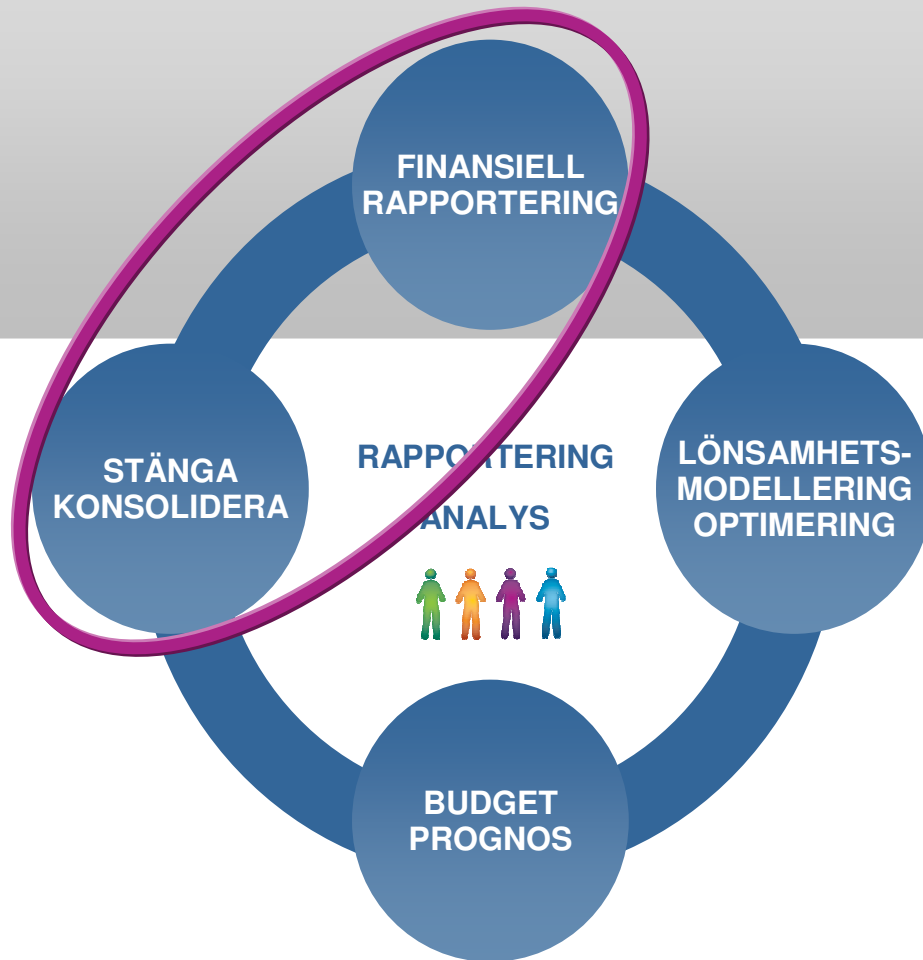


Stöd för hela processen med Cognos-plattformen



Stöd för hela processen med Cognos-plattformen

Konsolidering till rapportering



Utmaningar vi ser på marknaden

Ökade och förändrade krav på ekonomi/finans

- **Göra mer på kortare tid med färre resurser**

Ökade krav på kvalitet och analys från ekonomi/finans för att styra verksamheten

- **Utmaningar med att hantera data**

Stor andel av manuell hantering av rapporter och presentationer

- **Risk att felaktigheter finns med i rapporter**

Risk att felaktiga beslut fattas på grund av felaktig data i rapporter, liten eller ingen tid att analysera

Flödet från konsolidering till rapportering

FÖRBEREDELSE

DATA INSAMLING

DATA BEARBETNING

VERIFIERING

RAPPORTERING

The screenshot displays the IBM Cognos Controller interface. On the left is a 'Workflow' tree with categories like 'Group Consolidation Controller AB', 'Data Collection', 'Data Processing', 'Analysis', and 'Reporting'. The main window is titled 'Group Status' and contains several sections:

- Selections:** Includes fields for 'Actuality' (AC), 'Period' (0712), 'Submission' (1), 'Consolidation Type' (LE), 'Group' (1000), and 'Use Filter' (All).
- Submission Details:** Shows 'Form Set: MT', 'Date: 07/01/2008', and 'Time: 14:00'.
- Company Status:** A table showing the status of various companies within the group.
- Reporting Status:** A bar chart showing the count of companies in different reporting states: Missing (1), Processing (8), Reconciled (7), and Ready (3).

The 'Company Status' table is as follows:

Company/Group	Currency	Status	Change Date	Change Time	Changed By
1000 Controller AB Group	SEK	Processing	27/06/2012	12:24	ADM
1001 Controller AB	SEK	Processing	27/06/2012	12:23	ADM
3000 Controller Europe	EUR	Processing	27/06/2012	12:24	ADM
3001 Controller GmbH - Parent	EUR	Processing	27/06/2012	12:23	ADM
3002 Controller Tyskland AB	SEK	Reconciled	27/06/2012	12:18	ADM
3003 Controller Austria	EUR	Reconciled	27/06/2012	12:23	ADM
3007 Controller USA	USD	Processing	27/06/2012	12:23	ADM
2004 Controller Channel Islands	GBP	Processing	27/06/2012	12:23	ADM
1006 Controller Lila AB	SEK	Ready	27/06/2012	12:18	ADM
1003 Controller Norr AB	SEK	Reconciled	27/06/2012	12:23	ADM
1002 Controller Norway AS	NOK	Reconciled	27/06/2012	12:08	ADM
2000 Controller UK	GBP	Processing	27/06/2012	12:24	ADM
2001 Controller UK-Parent	GBP	Reconciled	27/06/2012	12:23	ADM
2002 Controller Wales	GBP	Ready	14/11/2008	14:59	ADM
2003 Controller US	USD	Reconciled	27/06/2012	12:23	ADM
2004 Controller Channel Islands	GBP	Processing	27/06/2012	12:23	ADM
1004 Split AS	NOK	Reconciled	27/06/2012	12:23	ADM
1005 Join AB	SEK	Ready	14/11/2008	14:59	ADM
1007 Controller SE	SEK	Missing			

The 'Reporting Status' bar chart shows the following counts:

- Missing: 1
- Processing: 8
- Reconciled: 7
- Ready: 3

Legend: Missing (Red), Processing (Blue), Reconciled (Orange), Ready (Green).

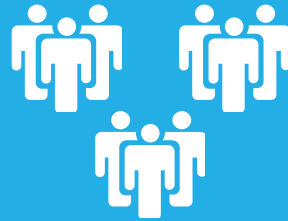
Note: All groups/companies within the selected group, regardless of filter.

Dagens ekonomi/finansorganisationer står inför **NYA UTMANINGAR** med primitiva verktyg

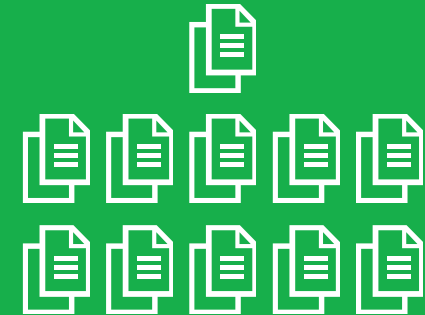
1 Finansiella applikationer



2 Arbetsintensiv process



3 Ökade rapporteringskrav



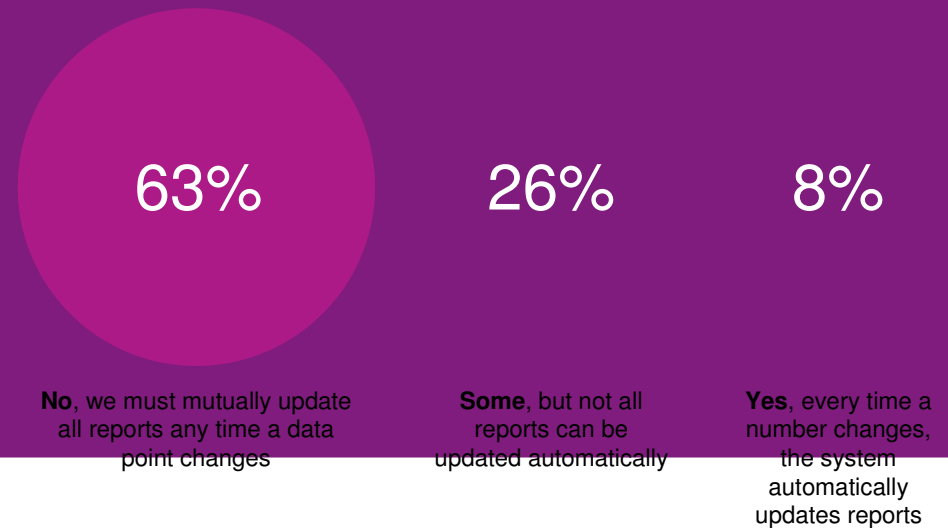
82% av befattningshavare inom finans/ekonomi svarar att “ the primary business application for generating management reports” är excelblad.

Finansorganisationen måste vara effektiv men verktygen är inte alltid de rätta

Avsaknaden av automatisering för att föda data från datakällorna till rapporter tar bort tid från värdeskapande arbete

Few companies are able to take advantage of the benefits of automation in updating the narrative portions of financial reports.

Do your company's information systems automatically update narrative analysis and discussions any time an underlying data point changes?



Bristande förtroende för processen, rapporterna och siffrorna



CFO: Det här är inte de siffror som vi har...Varför stämmer inte era siffror? Och var är analysen jag bad om?

Stöd för hela processen med Cognos-plattformen från konsolidering till rapportering

Ekonomi/finans går från att leverera historiska siffror till att leverera insikt och analys för att styra verksamheten

- då måste verktygen finnas där

Flödet från konsolidering till rapportering

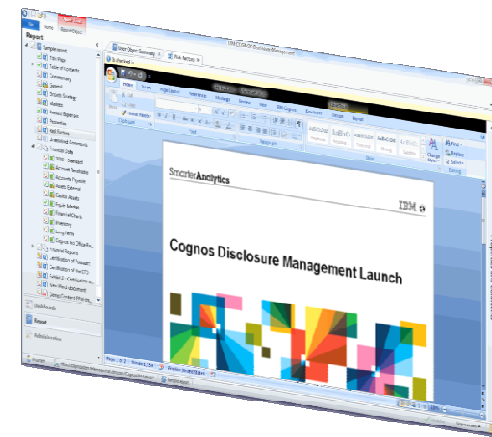
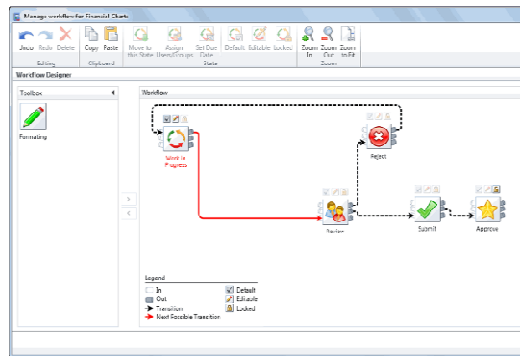
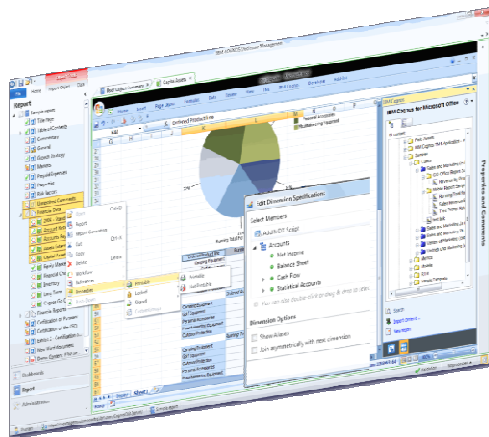
FÖRBEREDELSE

DATA INSAMLING

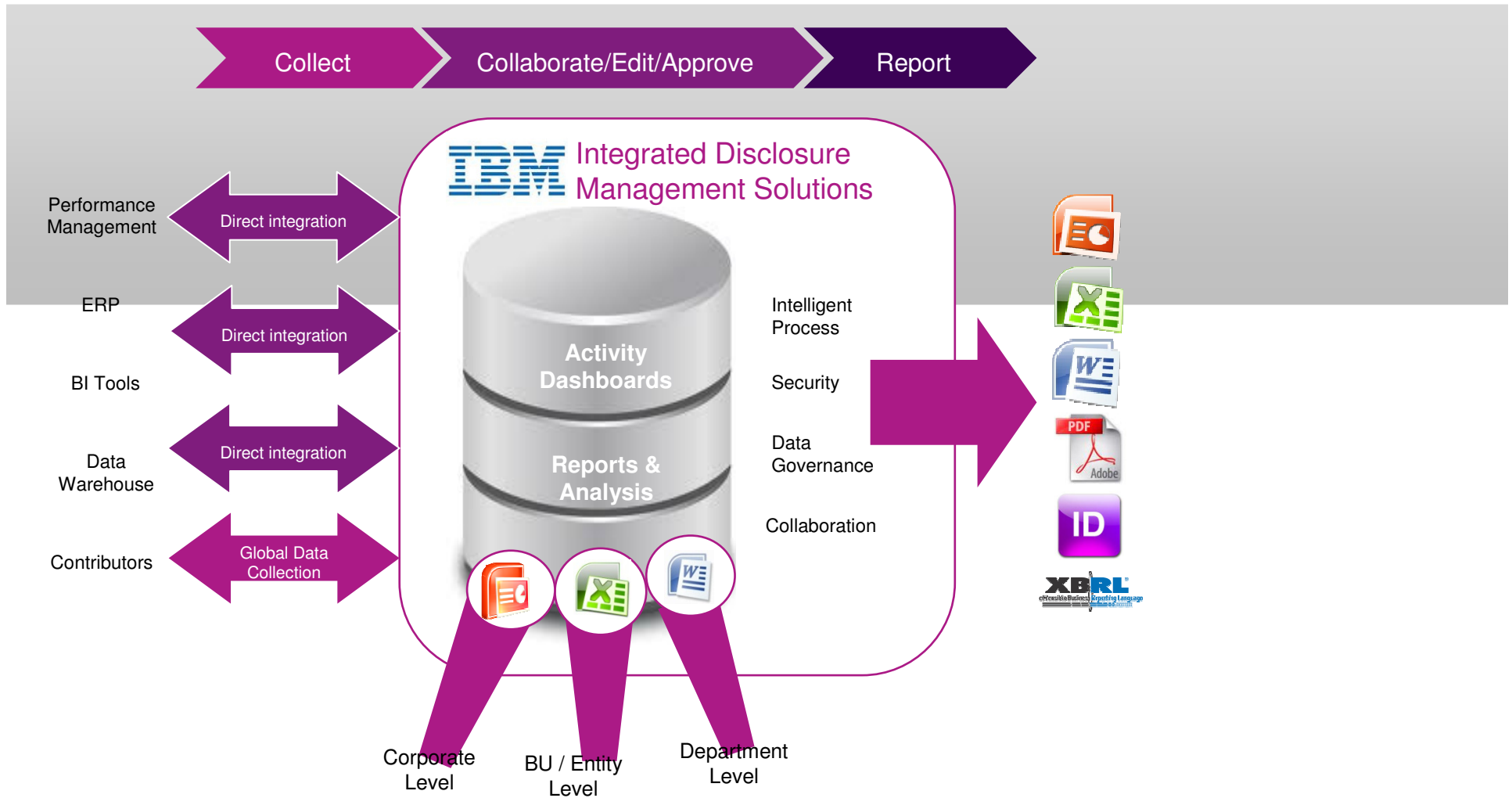
DATA BEARBETNING

VERIFIERING

RAPPORTERING



Disclosure Management - rapportering

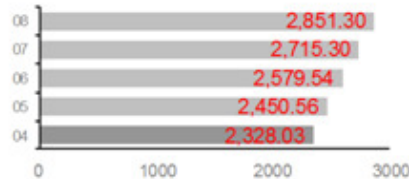


CHAIRMAN'S STATEMENT



Sir Mark Black
Chairman

REVENUE (£m)
2004-2008



UNDERLYING PROFIT BEFORE TAX (£m)
2004-2008



IN WHAT HAS BEEN A DIFFICULT YEAR FOR THE LEISURE TRAVEL MARKET, THE GROUP HAS DEMONSTRATED THAT ITS STRATEGY OF DIVERSIFYING RISK BY CREATING LEADERSHIP POSITIONS ACROSS A PORTFOLIO OF INTERNATIONAL LEISURE BUSINESSES CONTINUES TO DELIVER SUSTAINABLE GROWTH. THE PORTFOLIO, WHICH OFFERS CUSTOMERS IN 17 SOURCE MARKETS A WIDE VARIETY OF LEISURE EXPERIENCES TO OVER 200 DESTINATION COUNTRIES, MEANS THAT THE GROUP IS NEVER OVER-RELIANT ON ANY SINGLE DESTINATION OR SOURCE MARKET. OUR FINANCIAL PERFORMANCE IS TESTAMENT TO MANAGEMENT'S ABILITY TO ANTICIPATE AND EFFECTIVELY GUIDE THE GROUP THROUGH AN UNPRECEDENTED NUMBER OF GEO-POLITICAL EVENTS AND NATURAL DISASTERS.

SECTORS

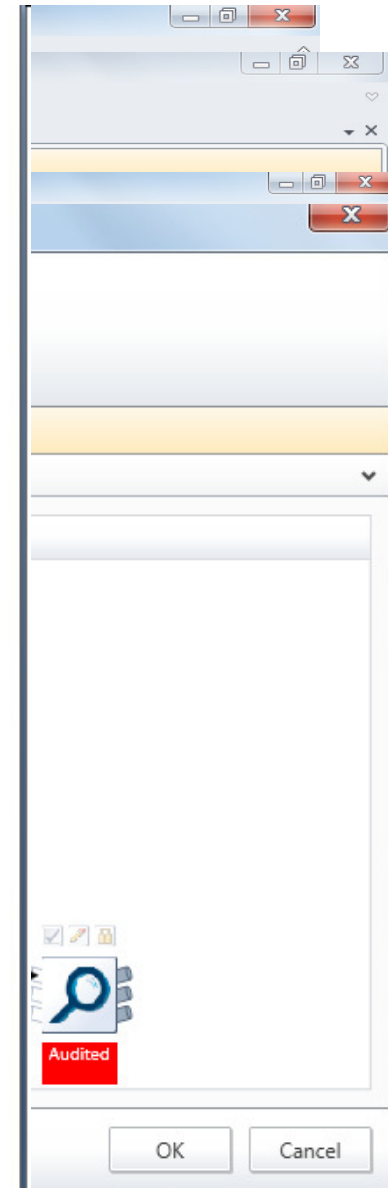
In the Mainstream Sector, we have outperformed the market and continue to do so due to a greater offering of exclusive differentiated product, a more flexible business model and a superior management team. In the Specialist Sectors, our portfolio of businesses continue to perform strongly as we benefit from the breadth of Specialist and Activity travel experiences available to our customers.

RESULTS

Consequently, I am very pleased to report that the Group achieved record underlying profit before tax of **£123.5m** (2007: £117.2m), with underlying operating profit up 5.3% at £142.6m (2007: £135.4m), on revenue growth of 5.0% to £2,851.3m (2007: £2,715.3m). The resulting underlying earnings per share increased by 16% to 16.1p (2007: 13.9p). This represents the fourth consecutive year of underlying double-digit earnings growth and demonstrates the strength of the Group's strategy, which combines both organic and acquisition led growth. The Group's statutory profit before tax was £102.7m (2007: £97.5m) and statutory basic earnings per share was 14.4p (2007: 13.7p).

DIVIDENDS

The Board is recommending a final dividend of 5.40p per share



Flödet från konsolidering till rapportering

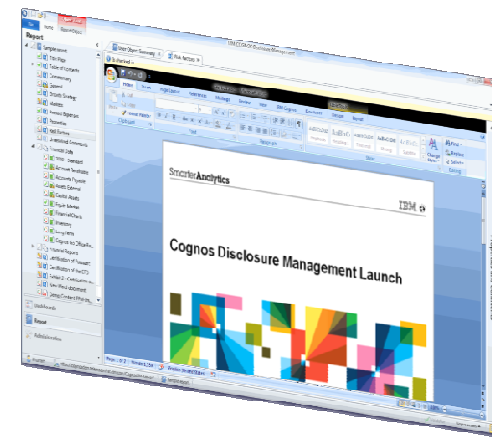
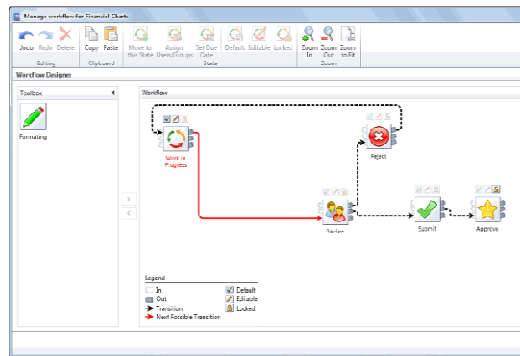
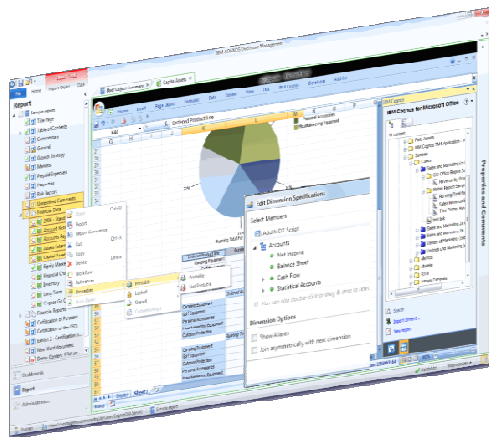
FÖRBEREDELSE

DATA INSAMLING

DATA BEARBETNING

VERIFIERING

RAPPORTERING



Varför väljer kunder IBM Cognos konsolidering och rapportering?

Ekonomi/finans kan snabbt analysera och få en effektiv och dynamisk process

Frigöra tid

- Automatisera processer, minska manuellt arbete
- Enkelt att skapa och underhålla rapporter

Ta kontroll

- Lösningar som ägs av ekonomi/finans
- Överblick över processen

Öka förtroendet och säkerheten

- Minska risken för manuella fel
- Öka säkerheten i en kontrollerad lösning
- Analysera instället för att bara säkerställa att rätt siffra är på rätt plats

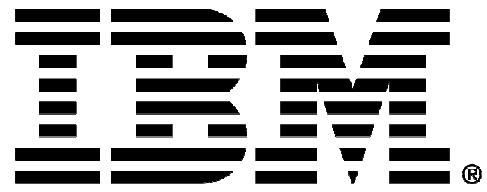
IBM har "den bästa lösningen i sitt slag på marknaden"

Gartner

<http://www.gartner.com/technology/reprints.do?id=1-19RJ48D&ct=120320&st=sb>







© Copyright IBM Corporation 2013

IBM Corporation
Software Group
Route 100
Somers, NY 10589

Produced in the United States of America
April 2013

IBM, the IBM logo, and ibm.com are trademarks of International Business Machines Corp., registered in many jurisdictions worldwide. Other product and service names might be trademarks of IBM or other companies. A current list of IBM trademarks is available on the web at “Copyright and trademark information” at ibm.com/legal/copytrade.shtml

This document is current as of the initial date of publication and may be changed by IBM at any time. Not all offerings are available in every country in which IBM operates.

The client examples cited are presented for illustrative purposes only. Actual performance results may vary depending on specific configurations and operating conditions.

THE INFORMATION IN THIS DOCUMENT IS PROVIDED “AS IS” WITHOUT ANY WARRANTY, EXPRESS OR IMPLIED, INCLUDING WITHOUT ANY WARRANTIES OF MERCHANTABILITY, FITNESS FOR A PARTICULAR PURPOSE AND ANY WARRANTY OR CONDITION OF NON-INFRINGEMENT. IBM products are warranted according to the terms and conditions of the agreements under which they are provided.

The client is responsible for ensuring compliance with laws and regulations applicable to it. IBM does not provide legal advice or represent or warrant that its services or products will ensure that the client is in compliance with any law or regulation.