



Lotusphere

Connect2013

Get social. Do business.

Anders Kjellnér

IBM Social Communication



Social Communications: Shifting from Reach to Relevance

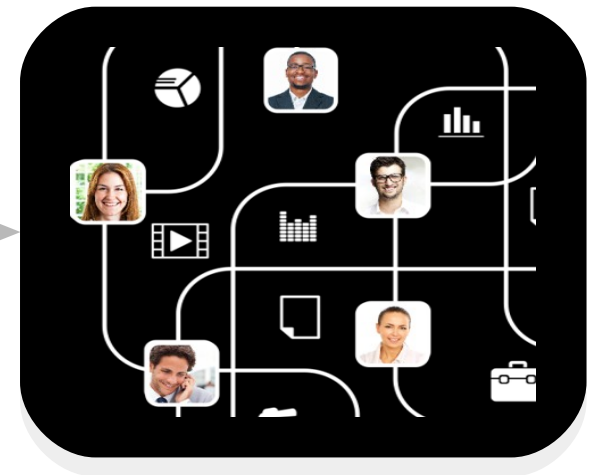
dial tone



presence



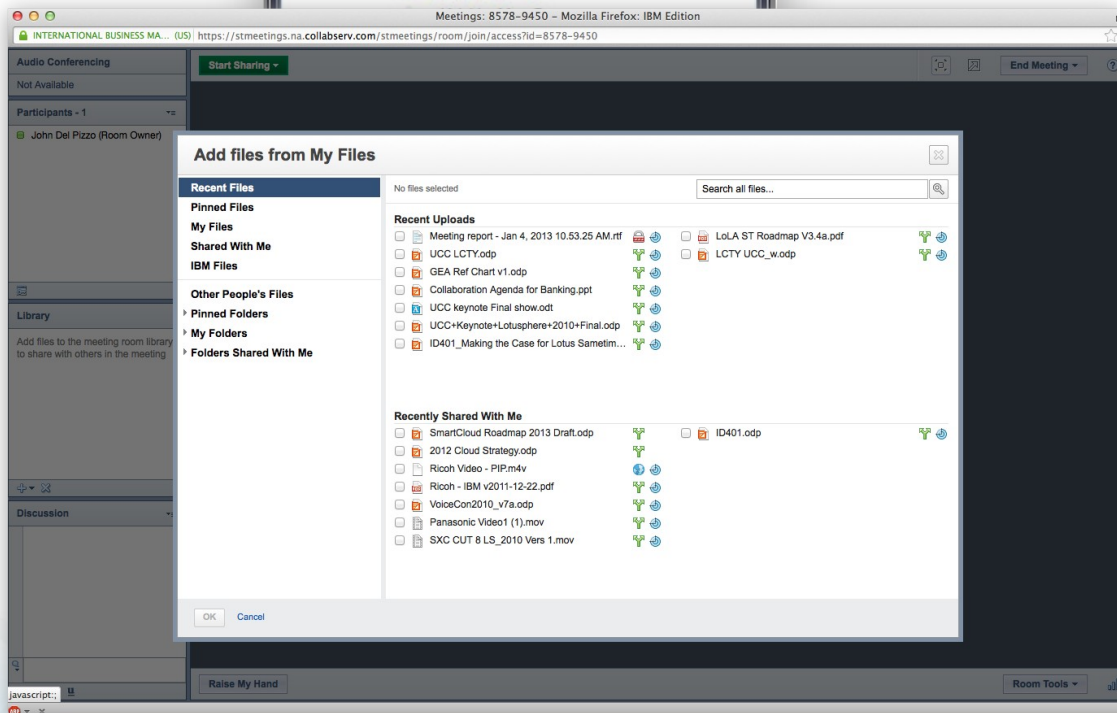
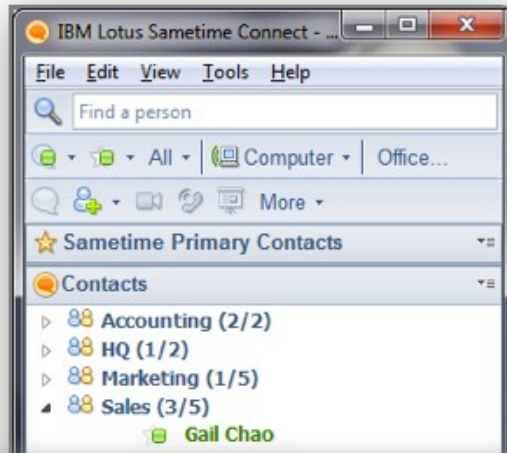
relevance



...will just get better

Future

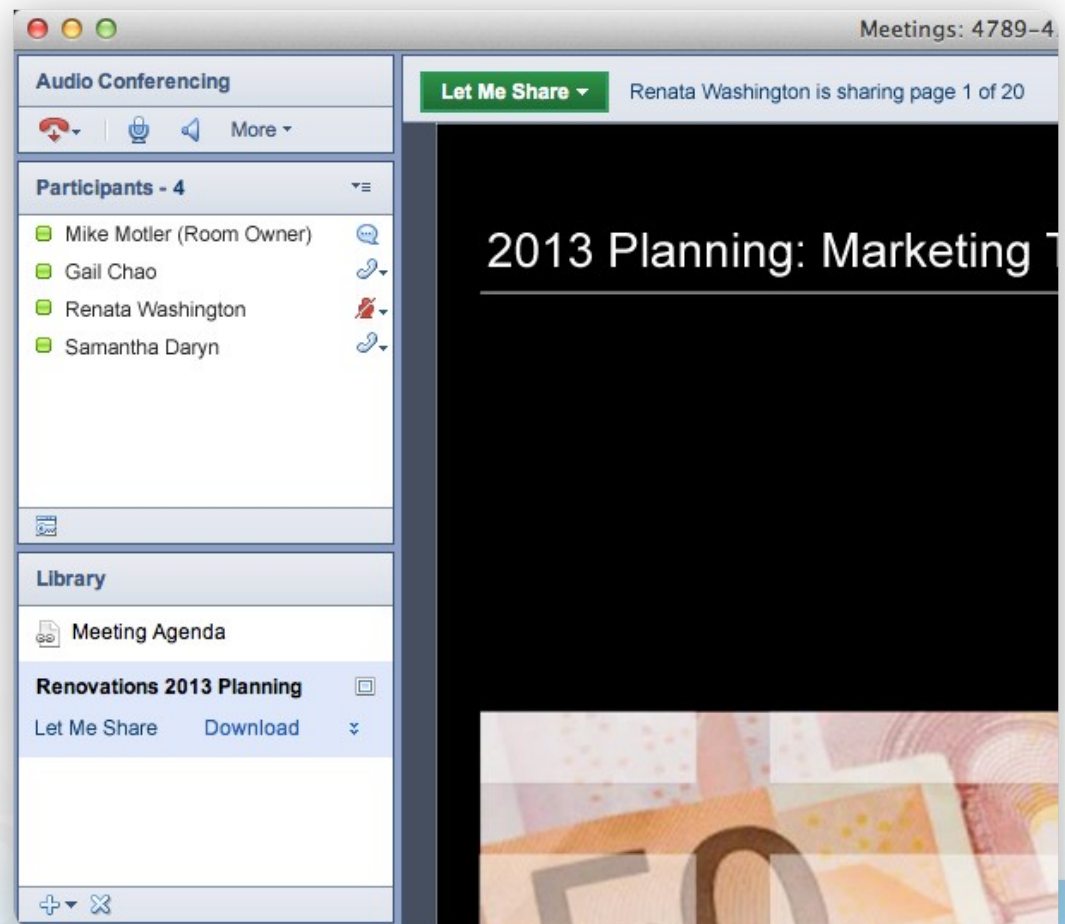
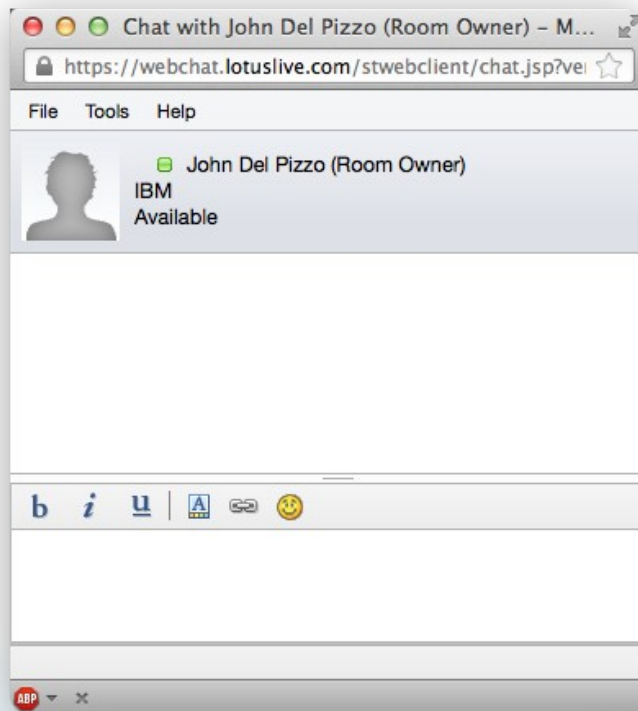
- Meetings Widget for Communities
- Persistent Group Chat widget for Communities
- Integration of Meeting libraries and Connections Files
- Search Profiles from Sametime client
- Publish announcements as microblog postings
- Video Chat Widget for Communities



SmartCloud for Social Business will benefit from planned communications enhancements

Future

- Browser-based chat client
- Mobile instant messaging
- File transfer, screen capture
- Audio conferencing
- Server side recording



A modernized user experience

The image displays four overlapping windows from the IBM Sametime interface, illustrating a modernized user experience for collaboration.

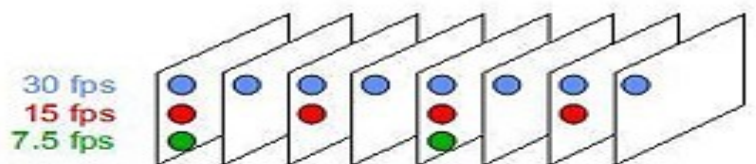
- IBM Sametime Connect:** A sidebar window showing a search bar ("Find someone"), a user profile for Samantha Daryn, and a "Contact List" with categories like Managers, Dev Team, Design Team, Marketing, and Sales.
- Meeting Room | Allie Singh's Meeting:** A central window showing a "Stream" of updates, a video thumbnail of a galaxy, and a presentation slide titled "Cloud Dashboard" with the subtitle "Creating Value for End Users and Driving User Adoption".
- Conference Call:** A window showing a list of participants: Gardner Raynes (Account manager, On mute), Jen Stevens (Account specialist, Connected), and Susan Jones (Marketing director, Connecting).
- Video Call:** A window showing a grid of video feeds for participants, including Susan Jones and Jen Stevens, with a "Participants (5)" list below.

At the bottom, a chat window shows a conversation between Paul Zhou and others, with messages like "can you also draw this with the light gray gradient at the top instead of the black..." and "Sure, I'll take care of it. When's the deadline?".

The only solution you'll need for 'desktop' video

Today

- Basic packet switcher
- Active speaker switched video
- H.264 AVC Video Encoding
- Desktop only
- Client-side recording



QCIF

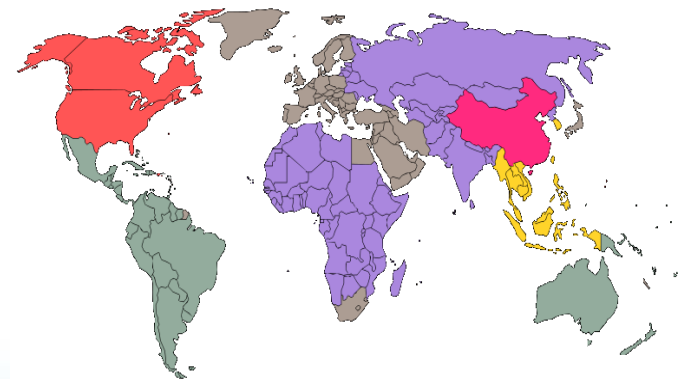
CIF

TV

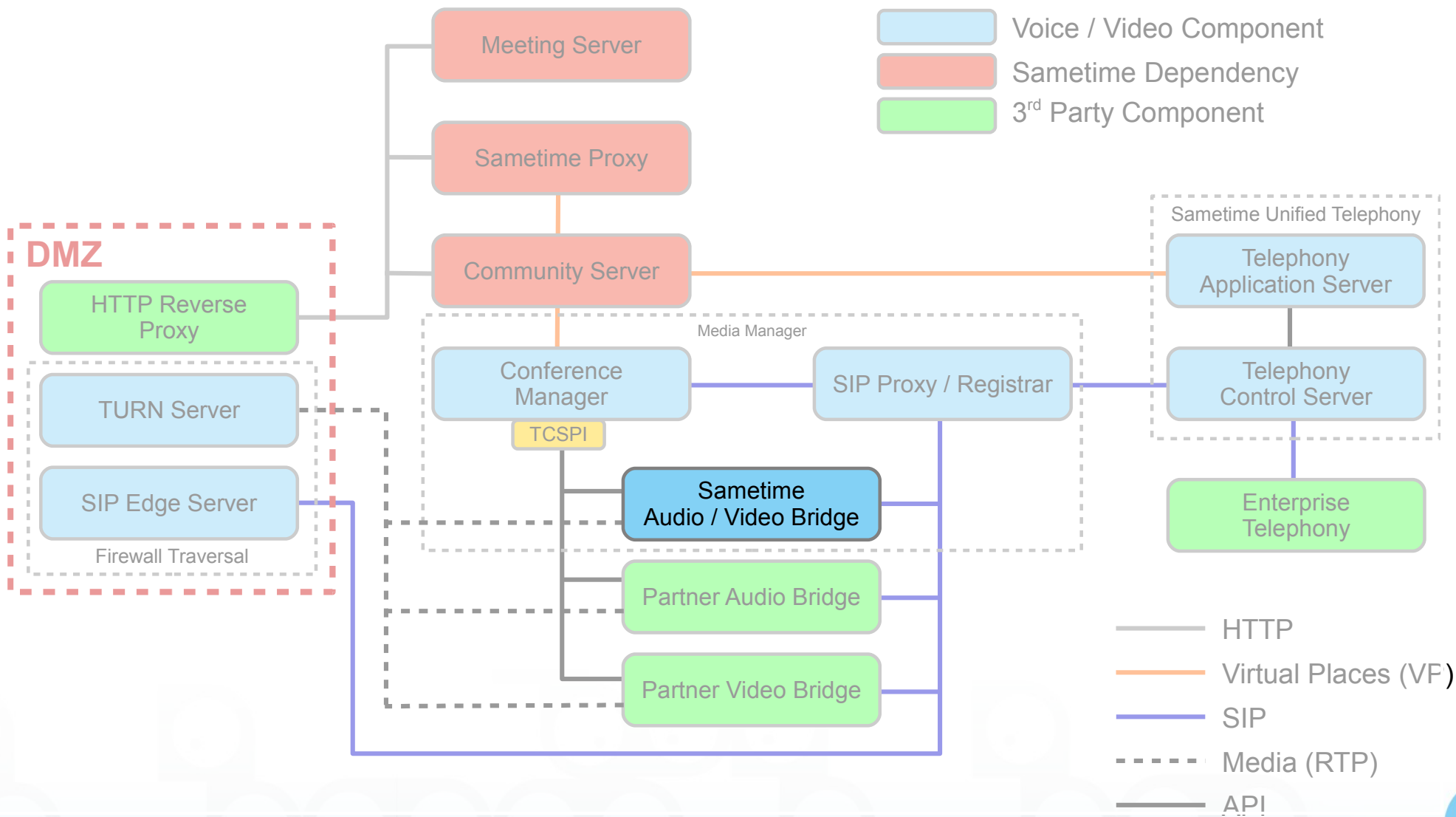


Future

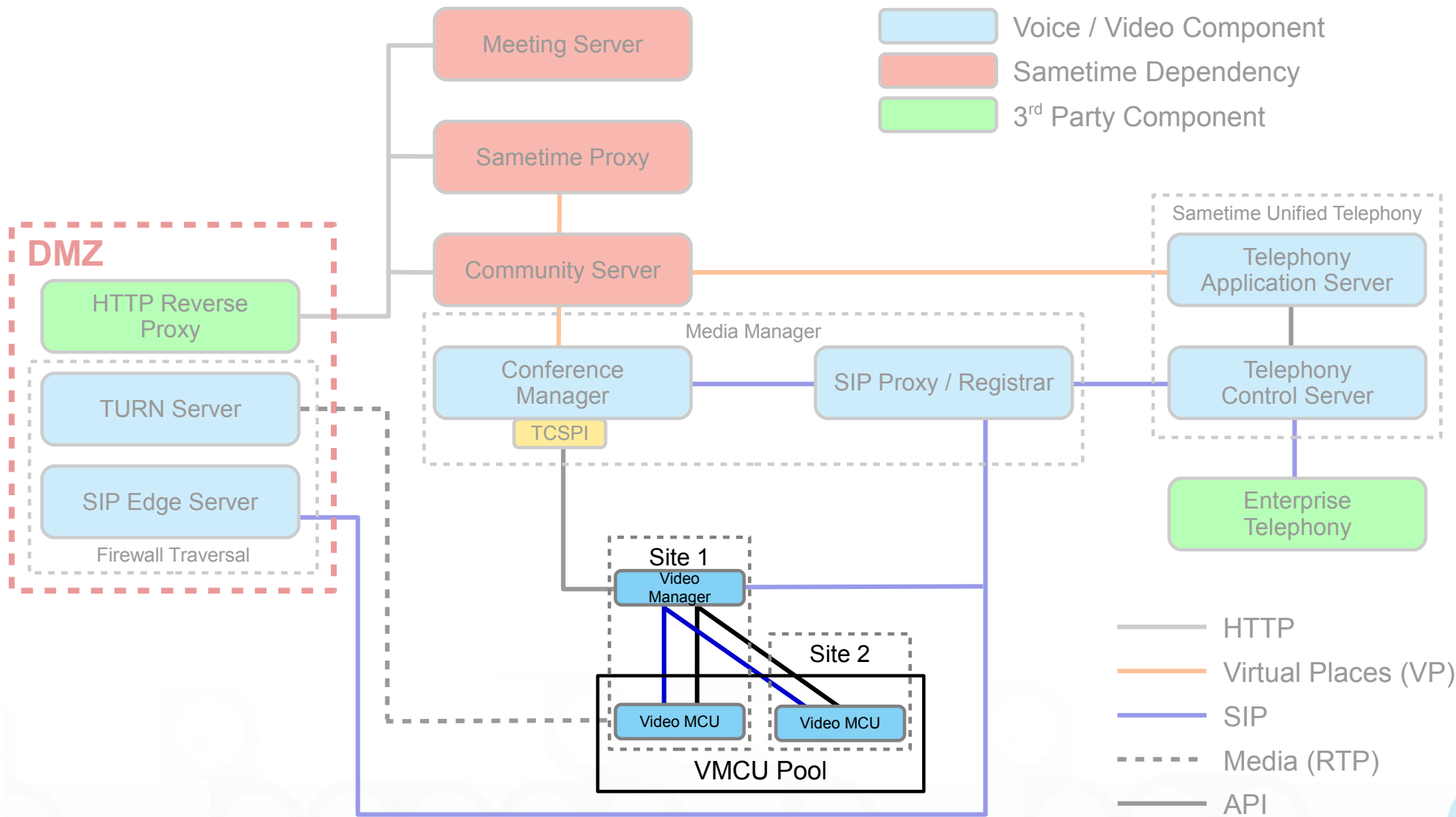
- Highly Scalable, Software MCU
- High Definition Continuous Presence Video
- Industry leading H.264 SVC encoding
- Browser, Rich, and Mobile clients
- Server & Client side recording
- Geographic distribution with automatic MCU cascading
- Dial out to audio bridges (via gateway)
- Supports Polycom SVC-based hardware end points
- Backward Compatible with older Sametime clients
- Maintains existing integration into 3rd party systems



Sametime 8.5.2 – Multimedia Architecture



Enhanced Voice / Video Architecture (Planned)



IBM Sametime Mobile Chat / IM



Available

- New platforms: Apple iOS 6, iPhone 5, Android 4
- Improved background session reconnect performance
- Easy to deploy – User configuration via URL
- Improved chat history
- Share Geo location in status

Coming soon

- IBM SmartCloud support
 - Android Tablet version
- ## 2013 roadmap
- Audio/video softphone for click-to-call
 - Offline mode for Chat/IM
 - Android push-notification





IBM Sametime Mobile Meetings in 2012

Available now

- Easy to join meetings: Scheduled meetings, Recent mtgs etc.
 - View and share presentations in library
 - View shared screens and applications
 - Chat with meeting participants
 - iPad support
 - SmartCloud and Sametime on-premise meetings

Coming soon

- iPad/iPhone, Android smartphones/tablets
 - Add documents to meeting room (e.g from IBM Connections)
 - Participate in polls
 - Manage meeting rooms: room access, permissions, passwords etc
 - Guest meeting entry option





IBM Smarter Mobile Meetings 2013 Roadmap

Smarter Meetings Goals

- Mobile centric design
- Easy to join and participate
- Audio and video
- Social integration





Lotusphere

Connect2013

Get social. Do business.

Anders Kjellnér
IBM Administration

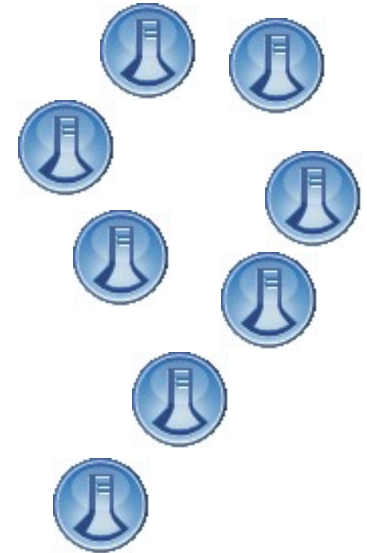


IBM Domino 9.0 Social Edition – key themes

- Reduce TCO
 - DBMT: Database Management Tool
 - NSD monitor for Unix
 - Quality of Service probe
 - Further SSO improvements via SAML 2.0 support

- Enhance Security/Integration
 - SHA-2 support for encryption
 - Transport Layer Security (TLS)
 - OAUTH credential store to support Embedded Experiences

- Improved transitions (9.0+)
 - Domino Migration Utility for mail/calendar conversion from Exchange
 - Domino patterns for IBM Pure Systems



Domino Migration Utility

- Refreshing the DUS / NUS tools to migrate from Exchange to Domino
 - Previous tools are outdated, supporting Exchange 2003 only
 - End user driven, not robust
 - Lack of API support for automation

- New utility will also have a server and client component
 - Server component to handle server based mail migration
 - Client component to handle local mail migration(PST files)

- Available when 9.0 ships
 - Will be provided outside of the 9.0 kit



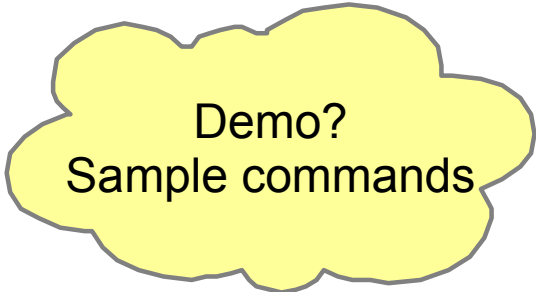
Domino Migration Utility

- Migrate email, calendar, contacts into Domino
- Active Directory migration to automatically create users and groups in the Domino directory
- Provides APIs to manage the migration
- Supports Exchange/Outlook 2007 and Outlook Express
- Supports Active Directory 2003 and 2008
- Requires Notes 9.0 and Domino 9.0
- Are you interested now?
 - Utility is currently available for use, please let us know if you are interested!



DBMT → DataBase Management Tool

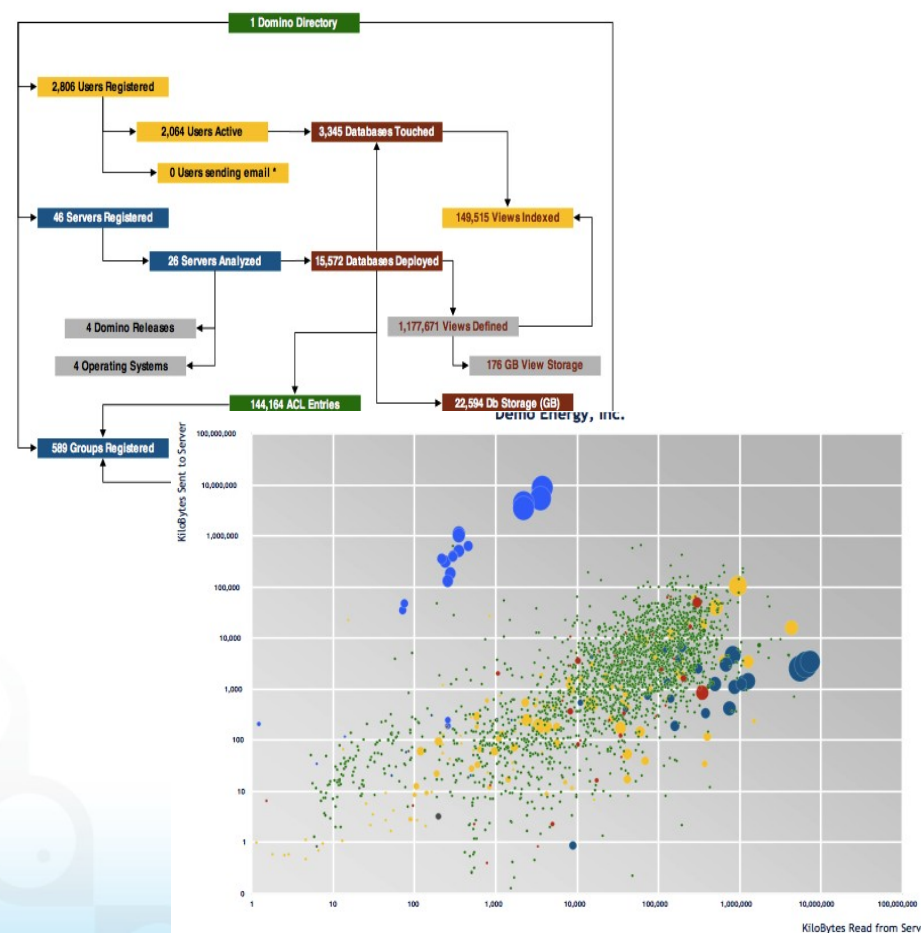
- Domino 9.0 Social Edition introduces a new task called DBMT that streamlines DB maintenance
- Automatically Bounded by time
 - Given a defined daily/weekly Maintenance Window, DBMT will achieve as much as it can, saving the remaining tasks for the next maintenance window
- What it does?
 - runs copy-style compact operations
 - purges deletion stubs
 - expires soft deleted entries
 - updates views
 - reorganizes folders
 - merges full-text indexes
 - updates unread lists
 - ensures that critical views are created for failover



Demo?
Sample commands

IBM Domino Doublecheck— Powered by Trust Factory

- Domino deployment analysis tool that measures:
 - User demand and usage patterns
 - Resources and capacity utilization
 - Overall system health and performance bottlenecks
- Deliverables
 - Analysis charts and graphs
 - Findings, conclusions, recommendations
 - Spreadsheets/pivot tables
 - Actionable facts for follow-up activities
- Now available to business partners

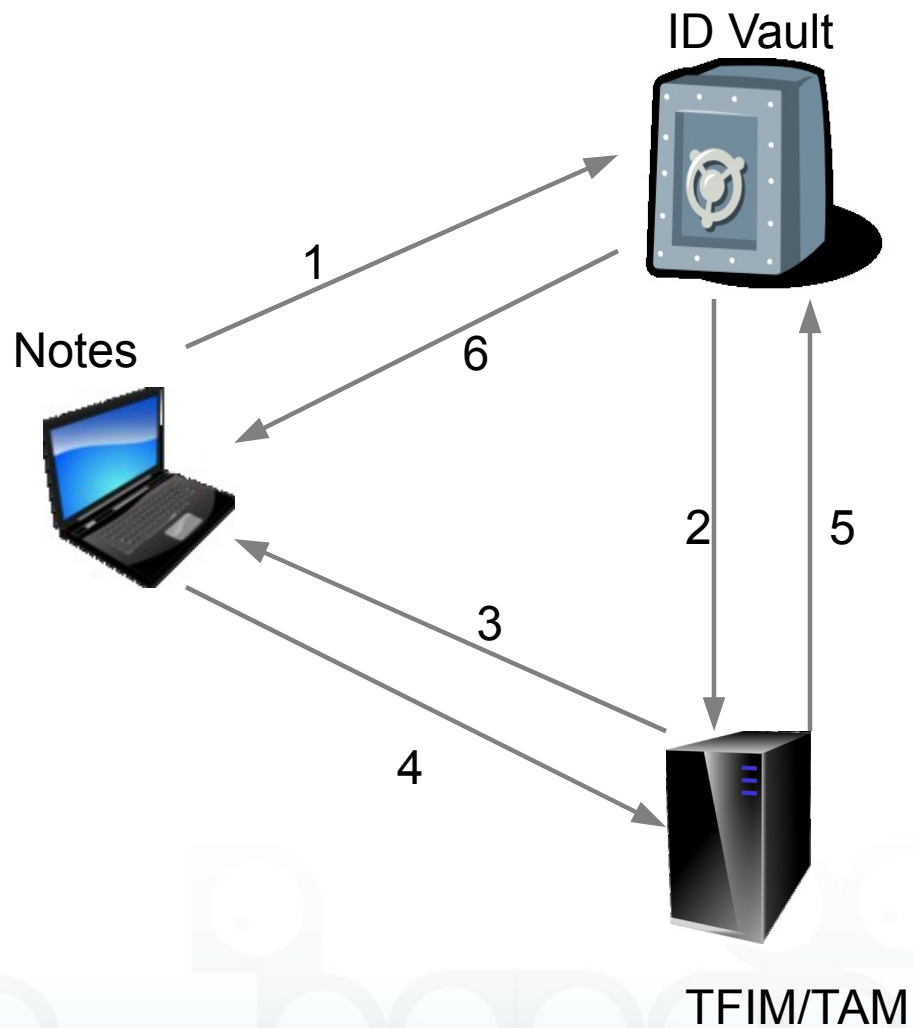


SAML

- Provides ease of use for end users – reduce the # of passwords to memorize
- Support for Notes, iNotes, and web clients
 - Notes Federated Login
 - Web Federated Login
- SAML 2.0 is recommended, but SAML 1.1 is also supported.
- Identity Providers supported
 - IBM Tivoli® Federated Identity Manager® (TFIM)
 - Microsoft's® ADFS 2.0 integrated with Active Directory®



Notes Federated Login with SAML



1) User launches Notes and Notes connects to the ID Vault

2) The ID Vault (configured for SAML authentication) reaches out to TFIM/TAM.

3) TFIM/TAM prompts user for credentials.

4) Correct credentials are supplied.

5) TFIM/TAM provides SAML artifact (XML) to ID Vault.

6) ID Vault provides ID to Notes. Once Notes session is completed, ID is removed from machine.

Note: Information is subject to change without notice at IBM's discretion

Transport Layer Security

- Successor to Secure Sockets Layer
 - An upgrade to SSL 3.0

- Web Server activity protected by TLS
 - XPages
 - Traveler
 - iNotes
 - ST
 - REST APIs
 - Quickr

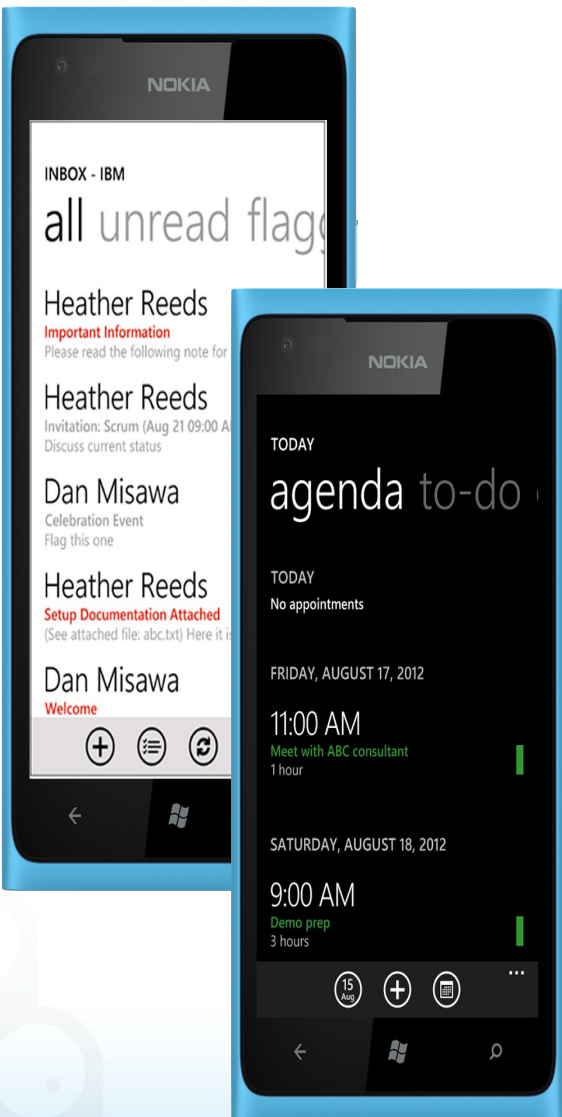
- Windows only in 9.0

- IBM HTTP Server will act as “front end” for Domino HTTP server





IBM Notes Traveler – 2013 Roadmap



- Microsoft® Windows Phone, Microsoft Windows 8 tablets
 - Mail, calendar, contacts
- Support for BlackBerry 10 devices through BlackBerry Enterprise Service 10
- Traveler server on IBM I
- Mobile Device Mgt API's (On prem)
- Enhanced attachment security policies
- Sametime meetings integration
- Sending and receiving encrypted mail with Internet users
- Syncing of Trash folder
- Smart Forward/Reply
- Certificate based authentication
- Integration with IBM Connections and Sametime mobile



S E



Terminology

■ OpenSocial

- OpenSocial is an open standard which defines APIs that can be used to build social applications using HTML, JavaScript, and CSS. The specification includes both JavaScript and REST APIs. OpenSocial leverages many other standards, such as Activity Streams and OAuth.
- See: <http://opensocial.org/>

■ Embedded Experiences

- Embedded experiences is a method of embedding the “experience” or functionality from one application into a different, host application. The end user experiences the 3rd party application in their host application environment as if they were using it directly from the 3rd party provider.

■ Activity Streams

- Activity Streams is an open standard which defines a data model to represent a stream or list of actions performed by users and applications. This specification DOES NOT define any APIs, it simply defines the data model.
- See: <http://activitystrea.ms/>



Terminology

- Apache Shindig
 - Apache Shindig is an OpenSocial container and helps to start hosting OpenSocial apps quickly by providing the code to render gadgets, proxy requests, and handle REST and RPC requests. Shindig is the reference implementation for the OpenSocial specification.
 - See: <http://shindig.apache.org/>
- Domino Server with Shindig
 - A Domino Server with the OpenSocial Component installed. This server runs portions of the Apache Shindig project as a web application based on OSGi. This server is responsible for rendering OpenSocial gadgets.
- DOTS
 - An acronym for “Domino OSGi Tasklet Service”, it is a server task that allows OSGi plugins to contribute scheduled “tasklets” that perform some amount of work on the server. The Widgets framework in iNotes contributes a DOTS tasklet to push Widgets to iNotes users by policy.

Terminology

■ Widget Catalog

- A database that is used to store metadata (i.e. a “widget”) about services for use within Notes and iNotes. In the case of OpenSocial Component, the focus is on OpenSocial gadgets for which widgets are created and stored in the Widget Catalog.

■ Credential Store

- A secure database that is used to store proxy rules, gadget capabilities, and OAuth information on the Domino Server with Shindig.

Deployment View

■ Server-side

- Install Domino 9.0
 - Includes toolbox.ntf and websecuritystore.ntf needed for the Widget Catalog and Credential Store, respectively
- Install the OpenSocial Component on each Domino 9.0 Server
 - Includes OSGi bundles
 - Shindig libraries are included as a bundle

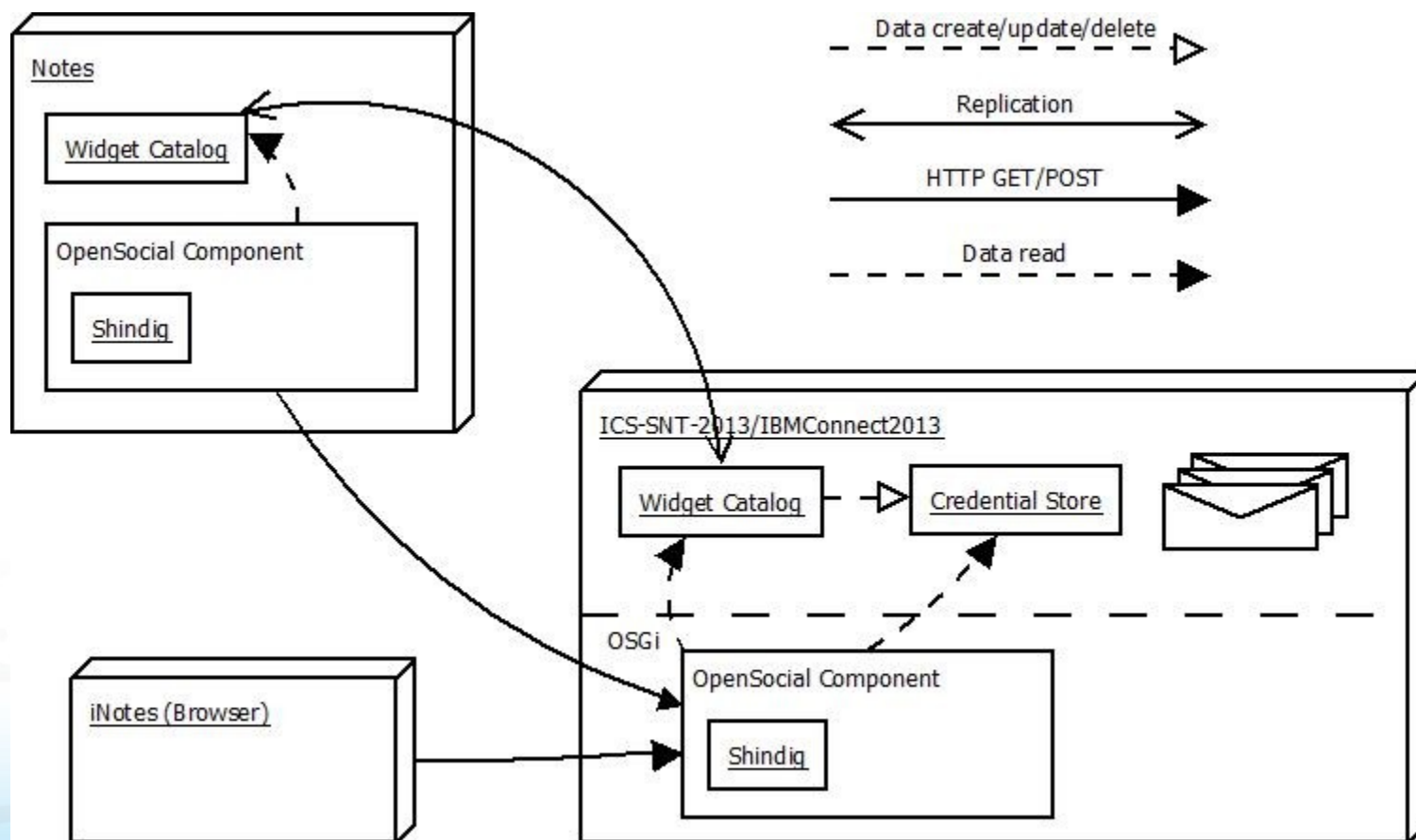
■ Client-side

- Notes
 - Install Notes Social Edition 9.0 with the OpenSocial Component included
- iNotes
 - Set a few notes.ini settings on the server to enable functionality in the iNotes Forms9 file.



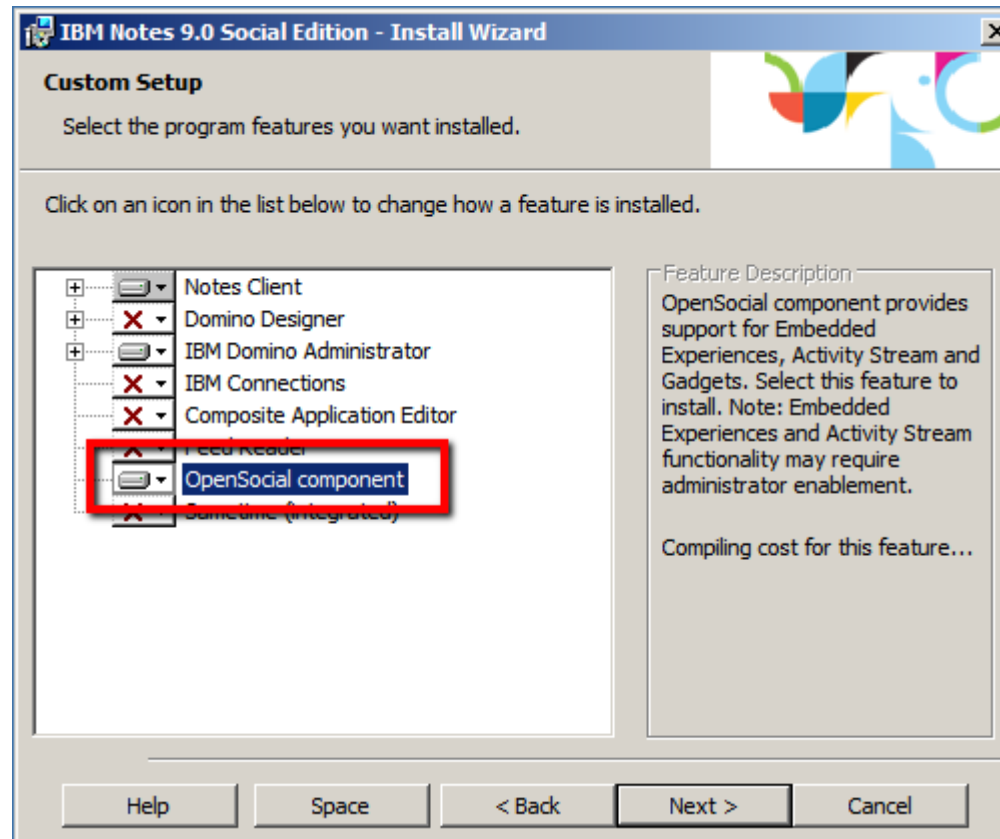
Detailed Deployment View

- A single server deployment
- The OpenSocial Component is installed on both Notes and Domino
- The Widget Catalog replicates to the Notes client



Notes Pre-requisites

- IBM Notes 9 Social Edition
- New “OpenSocial Component” on the Custom Setup page of the installer



- Add `ENABLE_EE=1` and `$ENABLE_EE=1` in Notes.ini

Detailed Deployment View

- **Creating the Credential Store** *keymgmt create nek <nekname>*
- **Create Widget Catalog** *connect to credstore*
- **Create Account**
- **Policy Settings** – *Desktop Settings, Security Settings, Mail Settings*
- **Server** → *Configurations view, Edit Configuration*

- Use wsadmin in Connections to register aOuth client and create widgets

- Import Connections widget in to Domino Widget catalog and approve them



IBM Connections needs your authorization to access your data.

[Click here](#) to authorize this application to access your Connections information.