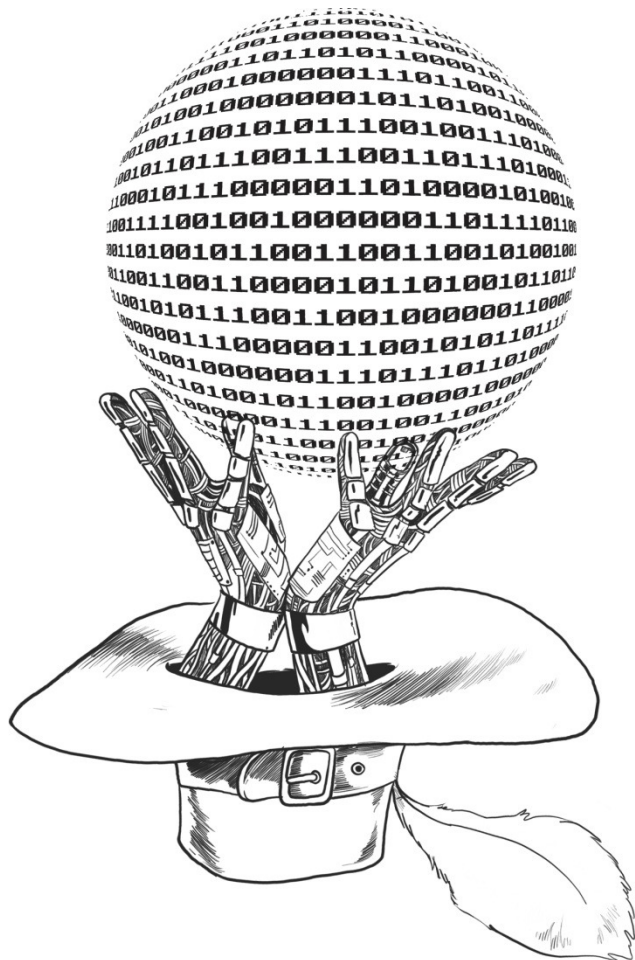


The Best is **Yet 2 Come**



Enterprise Management Solutions for **Smarter Education**

Cristina Campeanu
Sales Manager Higher Education & Utilities Market
www.brinel.com

16 martie 2012

Brasov



About **BRINEL**

The Best is Yet 2 Come

- ✓ **founded** in 1991, in Cluj- Napoca
- ✓ **present:** the most important **IT independent solution provider**
- ✓ **team:** **140 employees** in the most important locations **around the country:**

Cluj, București, Oradea, Brașov and Sibiu

- ✓ **Quality:** ISO 9001, ISO14001, ISO 27001, ISO 20000, ISO 18001



The Best is
Yet 2 Come

Strong **partnerships**

Among the most important ones we mention... 😊

Advanced
Business
Partner

BRINEL[®]

TM



20 DE ANI

The Best is Yet 2 Come

BRINEL Competencies



Reporting
(Business Intelligence)



Budget planning & consolidation



Any relationship management
(academic management)



Resource management applications
(ERP, HR, Payroll, eLearning)



Hardware & Software INFRASTRUCTURE



The Best is Yet 2 Come

Our experience recommends us as your
preferred partner

- ✓ We have experience in implementing successful projects which are functional in Higher Education
- ✓ We have the right knowledge to develop technical projects eligible for funding
- ✓ We have expertise and know-how directly from world class vendors



The Best is Yet 2 Come

Our expertise in implementing projects in Higher Education

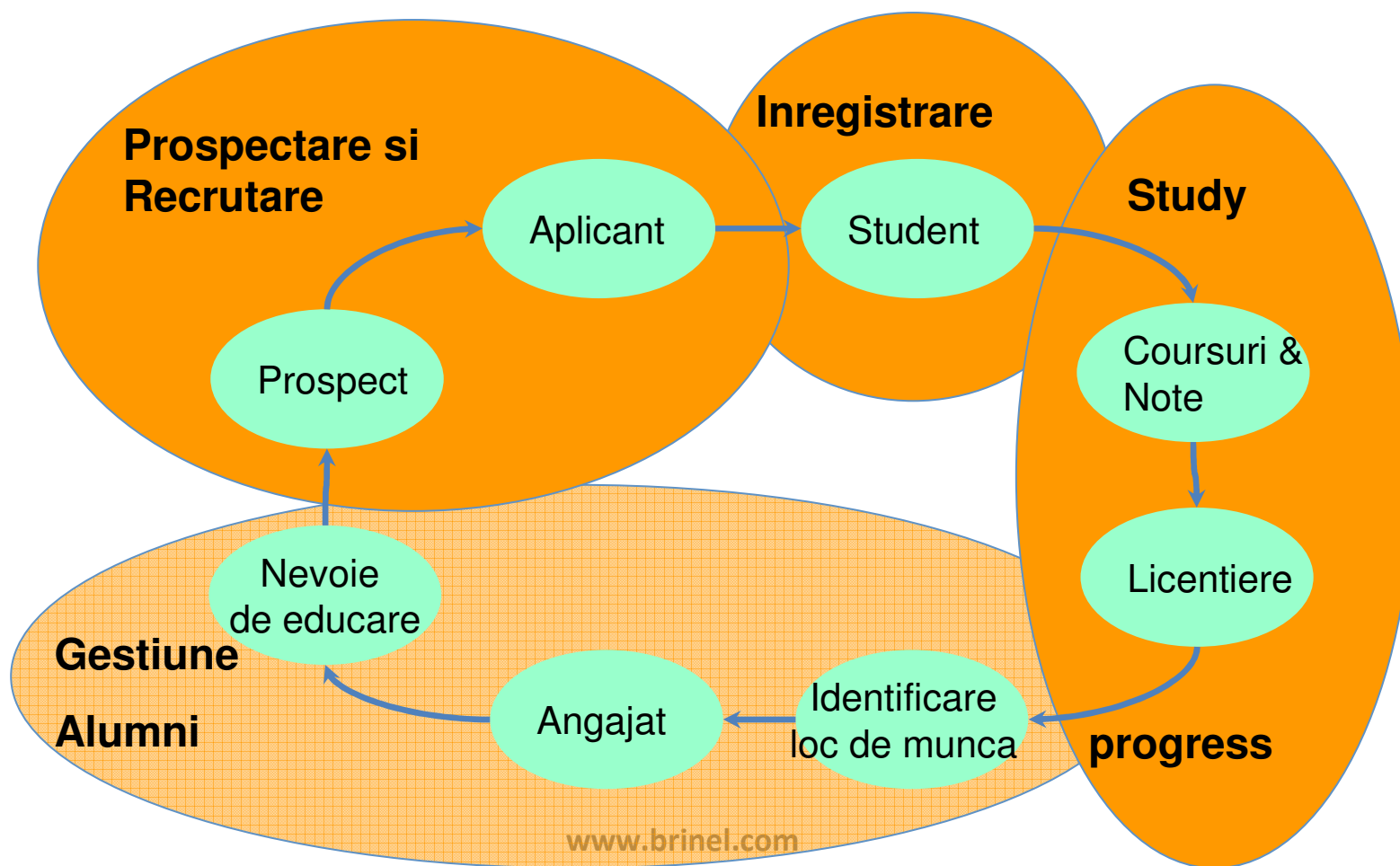
- ✓ Design Data Center, Storage, Servers
- ✓ Design Communications
- ✓ Identity Management, Security, Data
- ✓ Collaboration services
- ✓ Infrastructure Management
- ✓ Grid Computing, Supercomputer

Developing and implementing software

- ✓ Business Applications:
- ✓ Financial
- ✓ E-learning
- ✓ Student Management

The Best is Yet 2 Come

Campus Solution sustine **Long Life Learning**





The Best is
Yet 2 Come

Campus Solution

- ✓ Aplicatia numarul 1 implementata in primele 10 Universitati din lume
- ✓ Integrata cu sistemele de management financiar, eLearning si Business Intelligence
- ✓ In curs de implementare la 4 din Universitatile de top din Romania

O noua metoda de interactiune Univestitate - student : Campus SelfService

- ✓ Faciliteaza interactiunea electronica dintre student si Universitate (secretariat, indrumator, etc.)
- ✓ Auto-gestionarea de catre student a activitatii de informare: orar, sesiuni, note, restante financiare
- ✓ Inscrierea la cursuri si examene, efectuarea de plati catre Universitate, etc.

The Best is Yet 2 Come

Developing and implementing projects require High Skilled Personnel

- ✓ Infrastructure (Hardware & Software): + 50
- ✓ Java development: + 10
- ✓ .Net: + 15
- ✓ Business Application: + 20



The Best is
Yet 2 Come

We value **young talents**

TalentIT - School of Excellence

- ✓ a unique educational project outside Bucharest, focused on students who are interested in a career in IT&C
- ✓ the project is developed in collaboration with the Technical University of Cluj-Napoca

www.talentit.ro

www.brinel.com



The Best is Yet 2 Come

We value **young talents**

What does TalentIT offer to its members?

- ✓ access to real projects and know-how of BRINEL's IT specialists
- ✓ direct interaction with the largest IT companies around the world, which are BRINEL's partners
- ✓ opportunity to work with the latest IT technologies
- ✓ a practical framework to experiment: TalentIT Lab
- ✓ Scholarships

www.talentit.ro

www.brinel.com



Thank you!

**The Best is
Yet 2 Come**

We invite you to discover more about us... www.brinel.com

For further information,

please contact us:

Headquarters:
BRINEL Cluj-Napoca
cluj@brinel.ro

BRINEL, BUCHAREST
Branch:

brucarest@brinel.ro

BRINEL, ORADEA Branch:
oradea@brinel.ro

BRINEL, SIBIU Branch:
sibiu@brinel.ro

BRINEL, BRASOV Branch:
brasov@brinel.ro