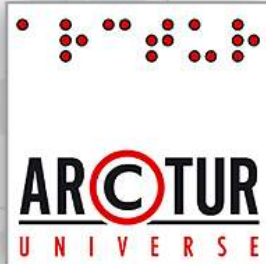




HPC services through the cloud for SMEs and academic institutions

Marko Kobal
Arctur d.o.o.

Ljubljana, IBM IC, 11th of June 2013



About Arctur (since 1992)

- 25 + 9 employees (as 1st January 2013)
- income from services >1,4 M€
- R&D department (8 researchers & 5 PhD students, inovations, patents)
- 4PM (Project Management Software – 12.000 users, 5 languages, awards)
- High Performance & Cloud Computing



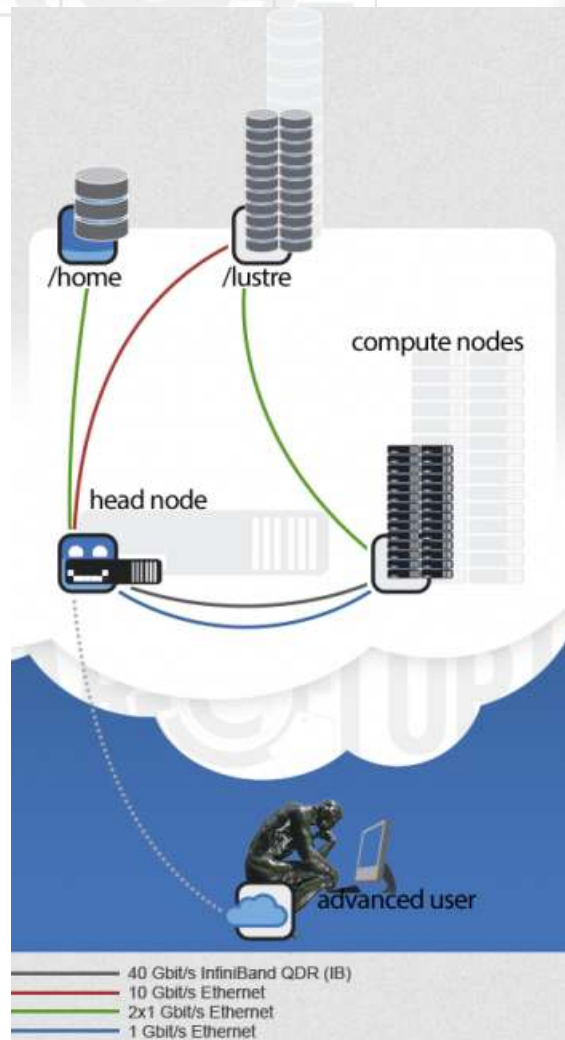


Why offer HPC services?

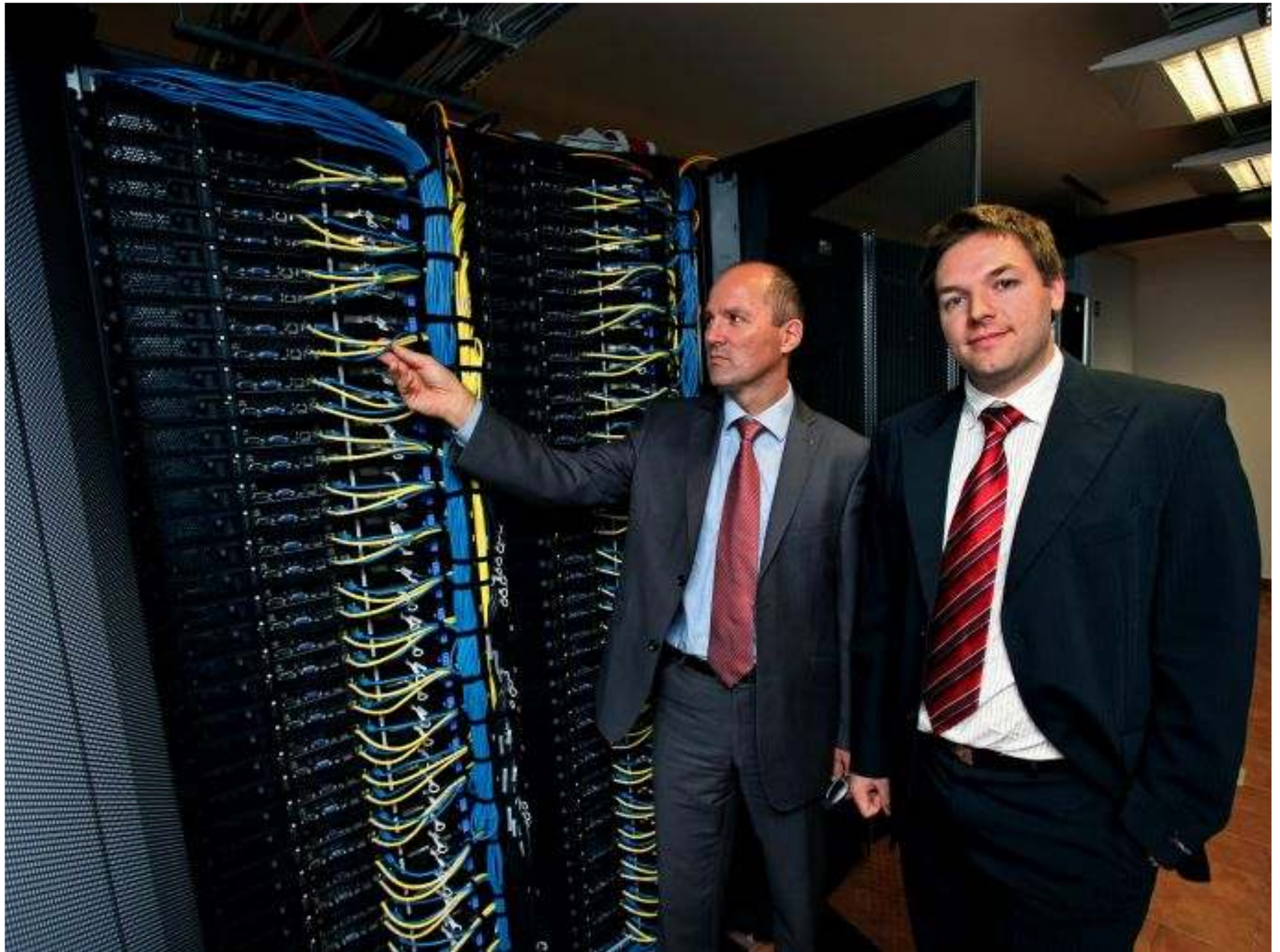
- there is no real **science** without HPC
- industry needs high **Added Value** products & services
- we live in a world of **video/animation** production
- we want to **predict & simulate** everything (weather, stock market, health, insurance risks...)



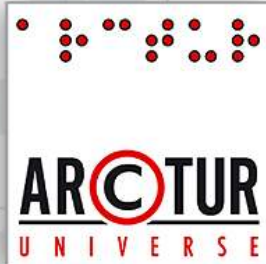
How should we do it?



- **user-centered** workflow
- traditional **user-shared** physical hpc system
- virtualized **user-encapsulated** infrastructure
- **remote visualization** platform
- **security & trust**







HPC 4 researchers

1. price and performance negotiations
2. deployment of user SW
3. computation
4. pay the bill ;)



HPC 4 SMEs

- 4. searching for an appropriate SME
- 3. building the demand (ideas)
- 2. searching for the right academia partner
- 1. searching for the proper SW (licensing?)
0. optimize SW and prepare it for remote usage
1. price and performance negotiations
2. first computation for FREE (trial usage)
3. high-priority computation (extra charge)
4. long term storage of user data and results
5. pay the bill (hopefully) and hope they will come again ;)



One of our's SMEs

Pipistrel Slovenia: Pipistrel is a proficient user of CFD tools in a parallel environment (primarily OpenFOAM), using it to analyze performance of all its new designs as well as contract work for external clients. They also developed its own optimization codes for the design of airfoils, wings and propellers, using simplified aerodynamic models such as panel methods and lifting line theory.

www.pipistrel.si

VIRUS SW

Available in tailwheel and nosewheel configurations, 80 and 100 HP.

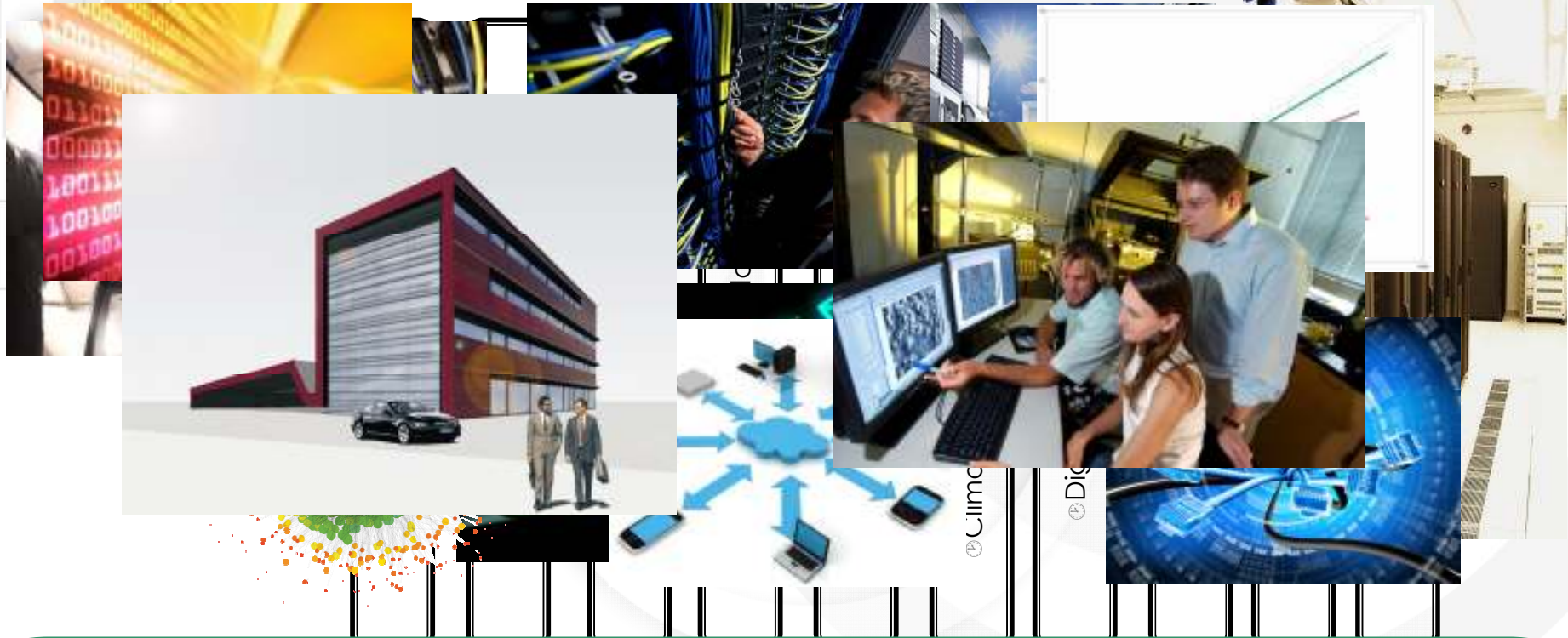
NASA Winner

Touch 300 km/h with 100 HP

Virus SW 80 and SW 100 are the next generation of the well proven Virus 912. Faster, amazingly nimble and with superior stability, it is a fantastic cruise aircraft. While ideal for cross-country flying, it is also suited for aero-clubs and training flights. Offering unprecedented handling, lower fuel consumption, comfort and NASA awarded performance.



centennial challenge winner
PAV 2007 - GAT 2008



HPC⁵

HPC⁵ Centre

Competence Centres

Business Incubator

Competences

• Parallelization & code optimization

• HPC Configuration & Deployment

• Performance & Scalability Benchmarking

• Mathematical modeling and advanced statistics

• HPC and Cloud Software Development

• Networking and Related Services

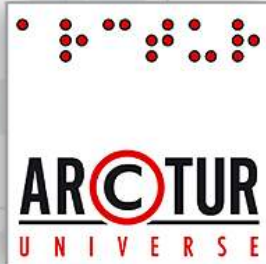
Infrastructure

• HPC
• Hardware & Software

• Cloud Infrastructure

• Data Centers

• Connectivity
• Fiber-Optic Network



How can EU help?

- + obviously it can since our own HPC center was partly funded by EU funds
- + FP7 and upcoming Horizon2020 project funding
- + Fortissimo as one of the most important EU projects for delivering HPC services to the SME's
- however ... EU also funds our „competition“: PRACE is a very capable HPC infrastructure, giving CPU hours for scientists „for free“
- EGI - EU GRID Infrastructure



THANK YOU
FOR YOUR
ATTENTION!

Questions?

marko.kobal
@arctur.si

hpc.arctur.si

**They want us to analyse
their Genome in
exchange for an used
Mars rover...**

