

Collaborative business solutions  
For highly productive organizations



Lotus software



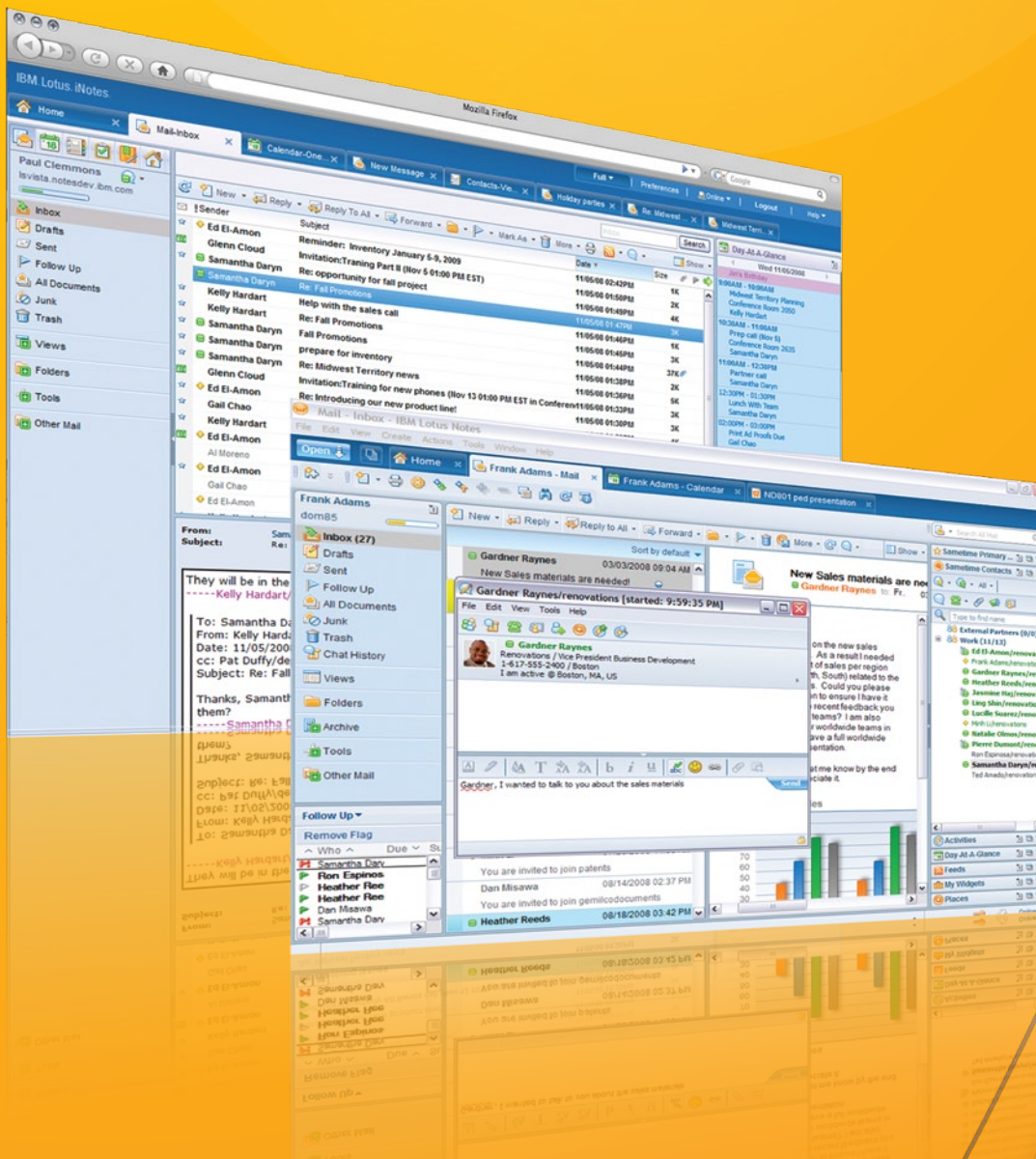
## IBM Lotus Notes and Lotus Domino software

*Connect, create and collaborate. Your way.*



# Discover the IBM Lotus Notes and Lotus Domino software platform

IBM Lotus Notes® and Lotus® Domino® software delivers a proven platform for collaborative business applications, messaging and workflow. It provides a reliable, security-rich messaging and collaboration environment for more than 46,000 companies worldwide, helping to increase employee productivity, facilitate decision making and improve overall responsiveness. IBM has leveraged its 20 years of leadership in business collaboration solutions to provide a new kind of desktop application that can help deliver an enhanced user experience, drive greater business value and boost IT performance.



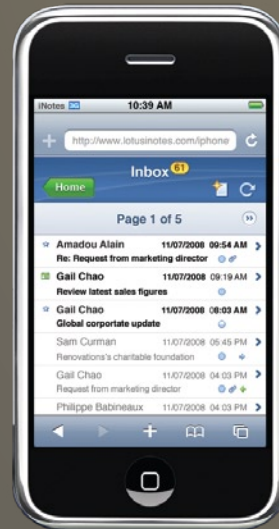


## Sound familiar?

Businesses today struggle with many challenges:

- A more competitive landscape that demands a greater level of innovation
- Escalating pressure to save energy and reduce their carbon footprint
- Increasing compliance requirements
- Budget pressures that make it essential to reuse existing assets
- The arrival of a more technically savvy generation of workers that expects the latest social networking and information-sharing technologies at work
- Global business operations that require minimal downtime
- An increasingly mobile workforce that needs access to company systems from just about anywhere to keep the business running
- IT application backlogs that hinder the ability to address business needs in a timely manner

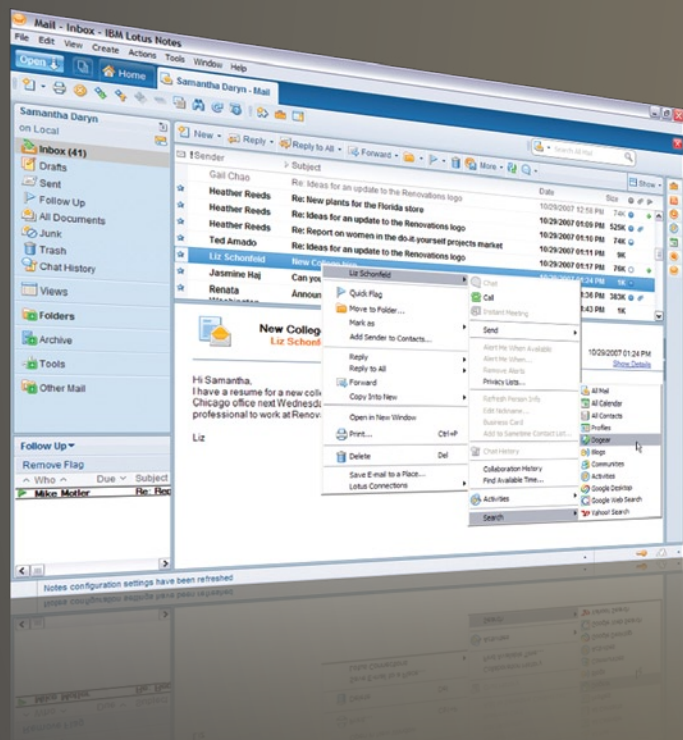
IBM Lotus Notes and Domino software can help you meet these challenges head-on with tools that enable you to do more—and create more—in less time.





## Deliver an enhanced user experience that helps boost efficiency

Lotus Notes and Domino software empowers users to take action, create and share knowledge and collaborate with teams. It elevates the power of e-mail with tools and information that help users get work done quickly. And it enables employees to leverage assets and connections across the Internet as boundaries between the enterprise and the outside world disappear.



### Connect

From a single desktop environment, access people and daily activities from both inside and outside of work.

- Chat with colleagues across the enterprise and beyond—from your e-mail, documents, calendar and more.
- Maintain your work/life balance by consolidating professional and public calendars for a comprehensive view of your schedule.
- Manage a wide set of business and personal contacts—even if those associates aren't using Lotus Notes software.
- Enable Web-based access to e-mail and calendars, even over slow connections, to broad communities of users such as home office and traveling employees, help centers, and student and faculty bodies.<sup>1</sup>

<sup>1</sup> This capability is provided by IBM Lotus iNotes™ software.

## Socialize

Share and expand organizational knowledge through integrated access to corporate and social networks.

- Perform basic searches of e-mail, contacts, calendars and the Internet (using popular search engines) from a single location.
- Tag the documents in Lotus Notes software that you know you'll use again and share them with your colleagues.<sup>2</sup>
- Tap the collective knowledge within your organization by searching profiles that give you details on colleagues, including their location, reporting structure and interests.<sup>3</sup>
- Connect users with relevant, realtime information from a variety of sources—without having to store that information in a document or e-mail—via widgets created from Lotus Notes views, Web pages, feeds and iGoogle gadgets.
- Stay on top of breaking corporate or industry news delivered to you automatically via an integrated news reader.

## Team

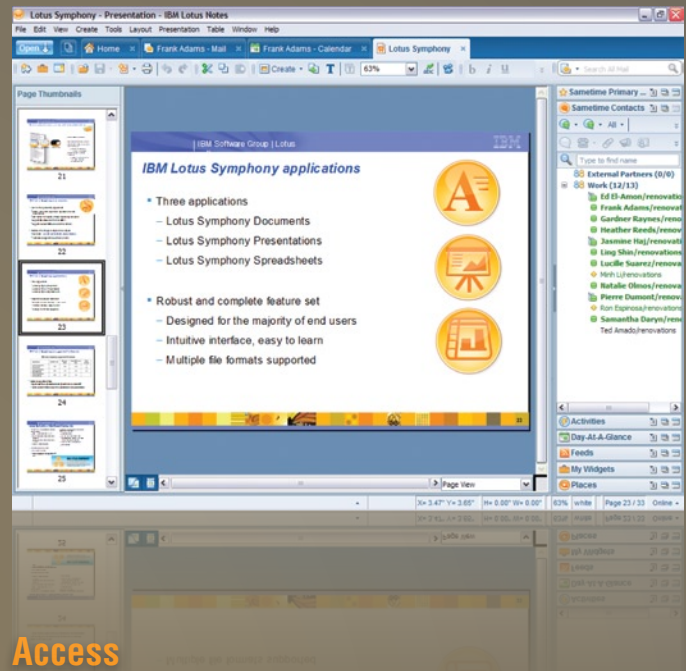
Help teams more easily communicate, share information and be more productive.

- Create documents, presentations and spreadsheets based on open standards, and seamlessly collaborate with users of other popular office productivity tools.<sup>4</sup>
- Share documents through up-to-date personal and team repositories—ensuring that all users can access the most current content.<sup>5</sup>
- Organize, manage and search the various activities and documents associated with a team project such as e-mail, documents, to-dos, meetings and team member information.<sup>6</sup>
- Leverage Web 2.0 technologies to further expand your knowledge base with integrated blog and discussion database templates.

2, 3, 6 Available through integration with IBM Lotus Connections software.

4 Available through integrated IBM Lotus Symphony™ software.

5 Available through integration with IBM Lotus Quickr™ software.



## Access

Empower users to work from virtually anywhere, with virtually any device, through rich desktop, browser and mobile access.

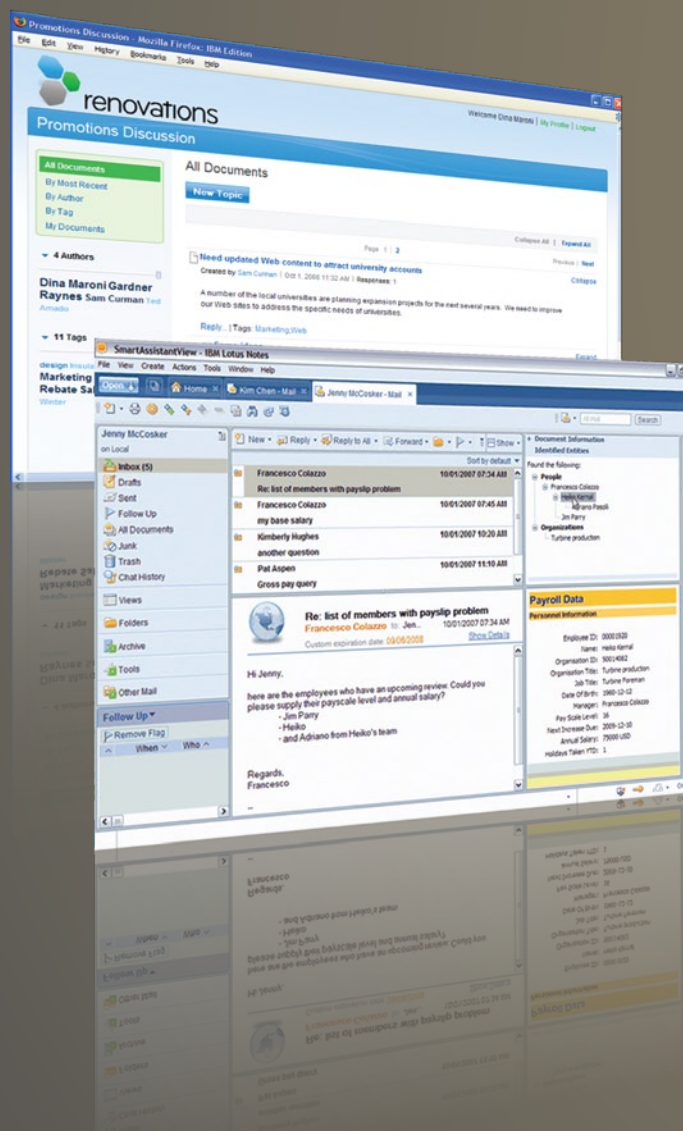
- Easily integrate with your enterprise client strategy with support for the Microsoft® Windows®, Linux® and Apple Mac platforms.
- Use your mobile device as your Lotus Notes desktop—expanded offerings support a wide variety of mobile devices and platforms.
- Give users with or without dedicated workstations rich roaming capabilities, so they can potentially access their personal preferences and settings no matter where they log in.
- Work with e-mail and applications while disconnected from the network, and use replication technology to help synchronize changes when you reconnect.





# Drive greater business value

Innovation is what distinguishes companies that thrive from companies that simply survive. IBM Lotus Notes and Domino software can help you drive top-line growth and bottom-line savings by streamlining your existing business processes and eliminating roadblocks.



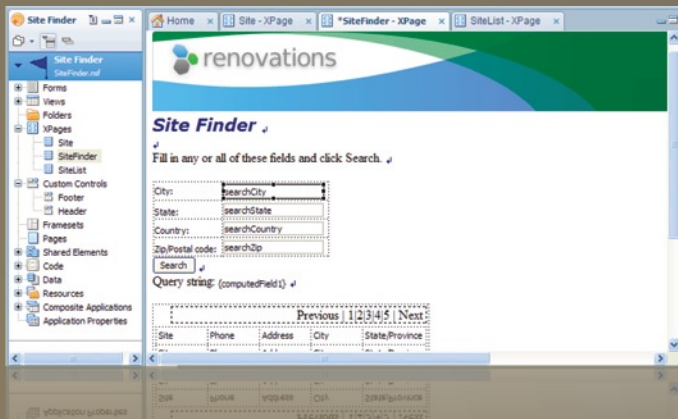
## Built for business

Support core business operations with a flexible application environment that can connect employees, partners and customers.

- Host a wide variety of business-critical applications such as customer relationship management software, help desk/customer support software, billing systems, supply chain tracking and project management software.
- Support a highly productive and cost-effective application development environment by enabling the rapid development and deployment of scalable and security-rich collaborative or workflow-driven applications.
- Help integrate workflow capabilities, business processes and data from SAP into the familiar Lotus Notes client.<sup>7</sup>
- Leverage the wide ecosystem of Lotus Notes and Domino applications built and distributed by IBM Business Partners.
- Go from out of the box to out on the Web in minutes using prebuilt discussion and blog templates.

**Alloy**<sup>™</sup>  
by IBM<sup>®</sup>  
and SAP<sup>®</sup>

<sup>7</sup> Planned capabilities will be available through Alloy<sup>™</sup> software by IBM<sup>®</sup> and SAP<sup>®</sup>. Plans are subject to change without notice.



## Empower developers

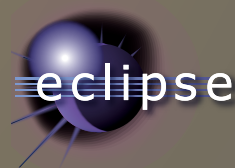
Respond quickly to changing business conditions and user requirements using readily available industry skills.

- Provide a radically fast application development environment built on the Eclipse platform for easy navigation and a means of integrating third-party tools.<sup>8</sup>
- Use XPages rich Internet application capabilities to create compelling Web applications while writing little to no code.<sup>9</sup>
- Enable developers to rapidly create and maintain document-based applications with custom business logic, workflow and user interface components.<sup>10</sup>
- Support multiple technology strategies and languages, including traditional Lotus Notes applications, Web applications, Eclipse platform–based components, host-based systems and desktop applications.<sup>11</sup>
- Provide business users with access to information, processes and workflows through their Lotus Notes interface from a wide variety of enterprise resources such as IBM DB2® data servers, third-party solutions such as SAP software, and Web services to help improve productivity, decision making and compliance.<sup>12</sup>

## Speed processes

Mash existing business applications together into composite applications that can help increase business agility.

- Give users a dynamic work environment that integrates the interfaces of multiple business applications, providing a full view of the right information and saving time when executing business processes.
- Help save development time by creating reusable components that extend the value of documents, spreadsheets, and Web, Java™, Eclipse, Microsoft and legacy applications—reducing the need to rip and replace existing investments.
- Leverage existing developer skills to create applications that break down information silos, embrace a dynamic IT infrastructure and respond quickly to competitive pressures and marketplace opportunities.



8, 9, 10, 11 This capability is provided by IBM Lotus Domino Designer software.

12 These capabilities are provided by IBM Lotus Enterprise Integrator for Domino software, IBM Lotus Connector for SAP Solutions software and IBM Lotus Domino Designer software.



## Boost IT performance

IT administrators face more challenges than ever before—security issues, environmental pressures, a demand for reliability and scalability, and rising costs. IT administrators need solutions that can solve these problems, simplify administrative tasks and reduce help-desk visits.



### Go green

Help optimize the requirements for hardware-oriented resources that can consume a fair portion of an IT budget—such as power consumption, memory and data storage—as well as the labor required for administrative tasks.

- Compress application data and application design aspects, helping to reduce disk usage and minimize backup and recovery costs.
- Help reduce the size of in-boxes and save disk space by minimizing redundant file attachments and streamlining input/output (I/O) with the Lotus Domino attachment and object service.
- Support scalability and utilization with optimized processes that help your applications to perform better with fewer servers.



## Optimize

Help your IT staff focus less on management and monitoring, and more on innovation and strategic initiatives.

- Choose from a wide variety of supported platforms, so you aren't locked in to a specific vendor or server architecture—or optionally elect to have IBM host your Lotus Domino servers, helping you to reduce overhead, generate predictable costs and rapidly roll out a Lotus Notes environment.<sup>13</sup>
- Tie multiple Lotus Domino servers together using clustering technology that supports a seamless and highly available application environment.
- Quickly and proactively detect and resolve server misconfigurations, performance bottlenecks and security issues across Lotus Domino domains using the IBM Lotus Domino Configuration Tuner tool.
- Help minimize help-desk visits by provisioning new users and performing upgrades from a central location.



<sup>13</sup> This service is provided by IBM Lotus Notes Hosted Messaging solutions.

<sup>14</sup> This capability is provided by IBM Lotus Protector for Mail Security software.

## Protect

Help ensure that information remains confidential, protected and verified with security-rich features.

- Specify the level of access that authenticated users and servers have to an application, including a default access for anonymous Internet/intranet users.
- Encrypt and verify e-mail and application data—even individual fields within applications—with digital signatures.
- Support compliance requirements by recording application activity with journaling.
- Proactively protect your e-mail infrastructure from spam, viruses and other threats originating on the Internet—before they reach your Lotus Domino servers.<sup>14</sup>

## Preserve investments

Bring the latest features and benefits to your business quickly while helping minimize expense, time and risks.

- Perform product upgrades to new releases of Lotus Notes and Domino software, often without having to upgrade server platforms, operating systems and directories.
- Confidently invest in your future with a Lotus Notes and Domino application environment that has historically been forward compatible.



# A solution for virtually any size company

IBM Lotus software isn't just for big business—  
it's for all business.

Buy what you need for today and easily scale and add capabilities as your business needs change. Small businesses can get started quickly and cost-effectively using an IBM Lotus Foundations™ *Start* solution. Give it a try, you'll be surprised by its power and simplicity.





## For more **information**

To learn more about how IBM Lotus Notes and Domino software can help your company drive greater business value, contact your IBM representative or IBM Business Partner, or visit:

**ibm.com**/software/lotus/notesanddomino

## Supported by **IBM Software Services for Lotus**

For more information about services that support Lotus and IBM WebSphere® Portal products, go to:

**ibm.com**/software/lotus/services



© Copyright IBM Corporation 2009

Lotus Software  
IBM Software Group  
One Rogers Street  
Cambridge, MA 02142  
U.S.A.

Produced in the United States of America  
January 2009  
All Rights Reserved

IBM, the IBM logo, ibm.com, Lotus, Domino, Lotus Notes, and Notes are trademarks or registered trademarks of International Business Machines Corporation in the United States, other countries, or both. If these and other IBM trademarked terms are marked on their first occurrence in this information with a trademark symbol (® or ™), these symbols indicate U.S. registered or common law trademarks owned by IBM at the time this information was published. Such trademarks may also be registered or common law trademarks in other countries. A current list of IBM trademarks is available on the Web at "Copyright and trademark information" at [ibm.com/legal/copytrade.shtml](http://ibm.com/legal/copytrade.shtml)

iGoogle is a trademark of Google Inc.

Microsoft and Windows are trademarks of Microsoft Corporation in the United States, other countries, or both.

Java and all Java-based trademarks and logos are trademarks of Sun Microsystems, Inc. in the United States, other countries, or both.

Linux is a registered trademark of Linus Torvalds in the United States, other countries, or both.

Other company, product, or service names may be trademarks or service marks of others.

References in this publication to IBM products and services do not imply that IBM intends to make them available in all countries in which IBM operates.

The information contained in this documentation is provided for informational purposes only. While efforts were made to verify the completeness and accuracy of the information contained in this documentation, it is provided "as is" without warranty of any kind, express or implied. In addition, this information is based on IBM's current product plans and strategy, which are subject to change by IBM without notice. IBM shall not be responsible for any damages arising out of the use of, or otherwise related to, this documentation or any other documentation. Nothing contained in this documentation is intended to, nor shall have the effect of, creating any warranties or representations from IBM (or its suppliers or licensors), or altering the terms and conditions of the applicable license agreement governing the use of IBM software.

IBM customers are responsible for ensuring their own compliance with legal requirements. It is the customer's sole responsibility to obtain advice of competent legal counsel as to the identification and interpretation of any relevant laws and regulatory requirements that may affect the customer's business and any actions the customer may need to take to comply with such laws.