

IBM Maximo Everyplace

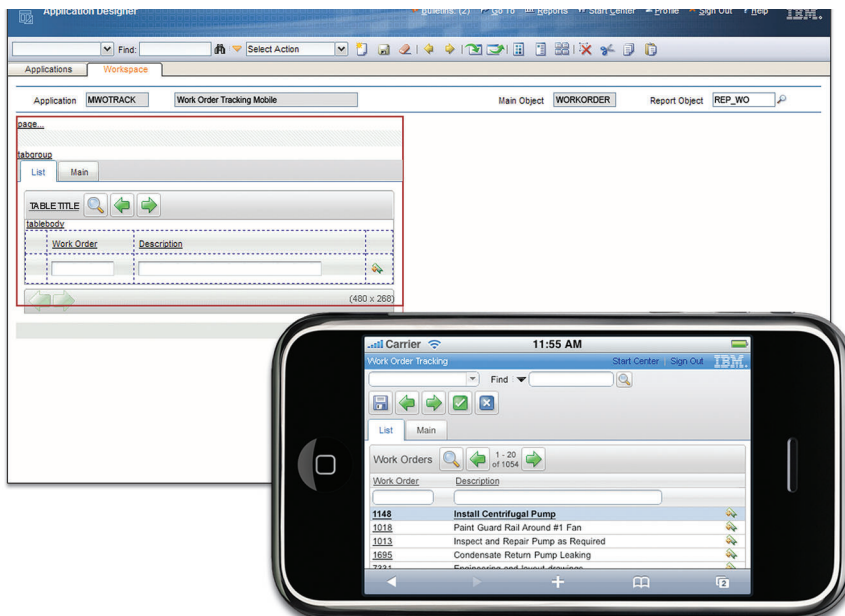
Highlights

- **Leverage IBM Maximo across a range of devices to gain real-time visibility into your operations**
- **Allow your users to access any existing IBM Maximo application on an iPhone, iPod touch, or other supported device without installing anything on those devices**
- **Configure IBM Maximo applications for optimal viewing on a small, mobile screen—or any device using an IBM Maximo-supported browser—by using the IBM Maximo Application Designer**
- **Use the same application on multiple devices running IBM Maximo-supported browsers**
- **Consolidate phone, e-mail, and access to IBM Maximo in a lightweight, portable, inexpensive device**

Accessing IBM Maximo on a mobile device provides several benefits

Global competition means that employees must know the state of their operations at all times in order to stay ahead of their competitors. This requires access to IBM Maximo® everywhere, all the time, across multiple devices. IBM Maximo Everyplace® is designed to put the power of Maximo on the latest devices while minimizing administrative overhead. All the benefits of IBM Maximo any time and every place you need it. Maximo Everyplace enables you to:

- Shorten the lag time between an event's occurrence and the recording of that event in the system. There's no need to wait until you get back to your desk to enter or retrieve data.
- Increase accuracy of data in the system by allowing users to enter information while it's fresh in their minds.
- Offer convenient, targeted access to Maximo for workers who don't regularly sit at a desk or use a desktop computer.



The new viewing window in IBM Maximo Application Designer indicates the viewable area on an iPhone and is configurable for the devices you use.



With Maximo Everyplace, you can use the Safari browser on your iPhone or iPod touch to interact with the Maximo system that you use at your desk. Maximo Everyplace adds extra configuration functionality, such as a window in the Application Designer that shows you how much of the screen you will see on the iPhone and an alternative look to use on your applications. Bigger buttons and redesigned user-interface controls make it easier to interact with Maximo on a touch screen. And, any applications that you design using these features are not limited to being used on an iPhone; they can be accessed and used on any device that uses a Maximo-supported browser, like IE 6 or 7. You could use the same application on your desktop machine, tablets, and an iPhone.

Creating useful Maximo applications with Maximo Everyplace is simple. Just follow these steps:

- *Know which users will need access and what those users need to be able to do*
- *Start with an existing application, for example, Work Order Tracking*
- *Clone the existing application and use the iPhone-sized window in the Application Designer to remove any functionality that you don't need on the handheld device*

- *Choose the look that is most appropriate for your application from the provided options, such as bigger buttons, alternative controls, and a smaller banner*

All the existing Maximo functionality is available in Maximo Everyplace. All the Application Designer features are also available. Maximo Everyplace gives you the tools that you need to apply Maximo functionality to your iPhone, iPod touch and any supported device, without installing anything on those devices.

For more information

To learn more about IBM Maximo Everyplace, please contact your IBM representative or IBM Business Partner, or visit ibm.com/tivoli

The customer is responsible for ensuring compliance with legal requirements. It is the customer's sole responsibility to obtain advice of competent legal counsel as to the identification and interpretation of any relevant laws and regulatory requirements that may affect the customer's business and any actions the customer may need to take to comply with such laws. IBM does not provide legal advice or represent or warrant that its services or products will ensure that the customer is in compliance with any law or regulation.

© Copyright IBM Corporation 2009

IBM Corporation
Software Group
Route 100
Somers, NY 10589
U.S.A.

Produced in the United States of America
June 2009
All Rights Reserved

IBM, the IBM logo, ibm.com, Everyplace and Maximo are trademarks or registered trademarks of International Business Machines Corporation in the United States, other countries, or both. If these and other IBM trademarked terms are marked on their first occurrence in this information with a trademark symbol (® or ™), these symbols indicate U.S. registered or common law trademarks owned by IBM at the time this information was published. Such trademarks may also be registered or common law trademarks in other countries.

A current list of IBM trademarks is available on the Web at "Copyright and trademark information" at ibm.com/legal/copytrade.shtml

Other company, product and service names may be trademarks or service marks of others.

References in this publication to IBM products and services do not imply that IBM intends to make them available in all countries in which IBM operates.

No part of this document may be reproduced or transmitted in any form without written permission from IBM Corporation.

Product data has been reviewed for accuracy as of the date of initial publication. Product data is subject to change without notice. Any statements regarding IBM's future direction and intent are subject to change or withdrawal without notice, and represent goals and objectives only.

THE INFORMATION PROVIDED IN THIS DOCUMENT IS DISTRIBUTED "AS IS" WITHOUT ANY WARRANTY, EITHER EXPRESS OR IMPLIED. IBM EXPRESSLY DISCLAIMS ANY WARRANTIES OF MERCHANTABILITY, FITNESS FOR A PARTICULAR PURPOSE OR NON-INFRINGEMENT. IBM products are warranted according to the terms and conditions of the agreements (e.g. IBM Customer Agreement, Statement of Limited Warranty, International Program License Agreement, etc.) under which they are provided.



Recyclable, please recycle.

TID14050-USEN-00