

## Processor Model Number Discovery Guide

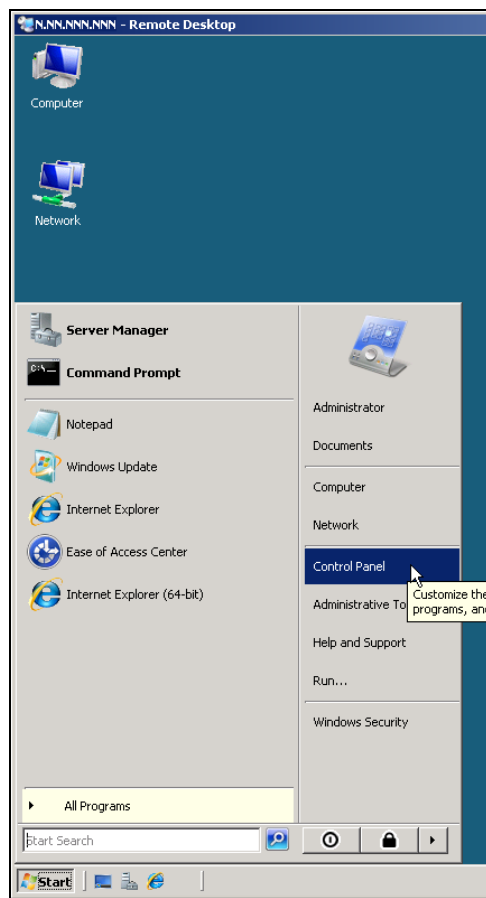
### Windows Operating System screenshots

*Step A.1* - Open your 'Start Menu' and select the 'Control Panel'.

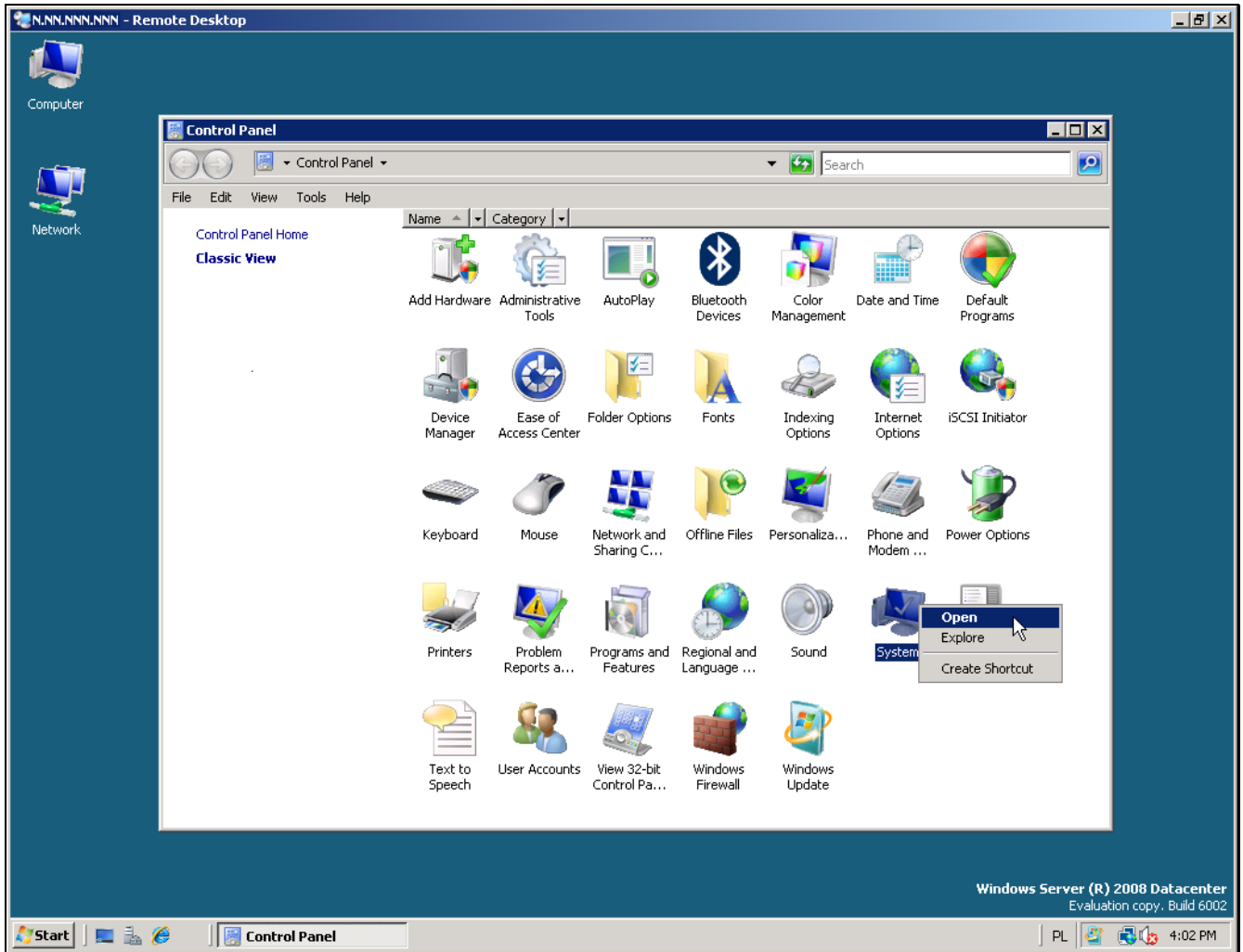
*Step A.2* - In the 'Control Panel', open 'System'

*Step A.3* - In 'System', locate the processor model number in the 'Processor' row.

*Step A.1* - Open your 'Start Menu' and select the 'Control Panel'.



Step A.2 - In the 'Control Panel', open 'System'



Step A.3 - In 'System', locate the processor model number, in the 'Processor' row.

