



WebSphere e-business Software

Application Development Strategy
and
The *New* WebSphere Studio

Business Partner Update
November, 2001



Agenda



- ★ **Announcement Summary**
- ★ **IBM's Application Development Strategy**
- ★ **Announcement Detail**
- ★ **Business Partner and Community Programs**

What Are We Announcing?

Solutions that unlock the full power of open e-business platforms through unprecedented gains in developer productivity and quality

Tools + Infrastructure + Open Technology + Community

Business Problem

Productivity & quality limitations due the inability to integrate best-of-breed tools & infrastructure in a single, seamless environment



Technology Problem

Lack of an open application development integration platform similar in nature to what is available for servers (e.g., Apache / J2EE / Linux)



A newly integrated, open

WebSphere Studio Family

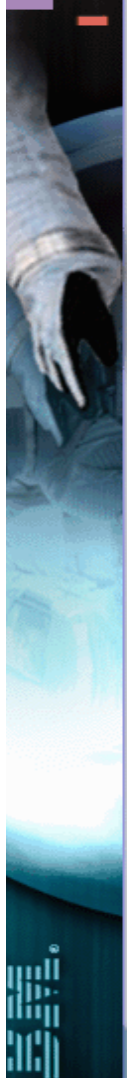
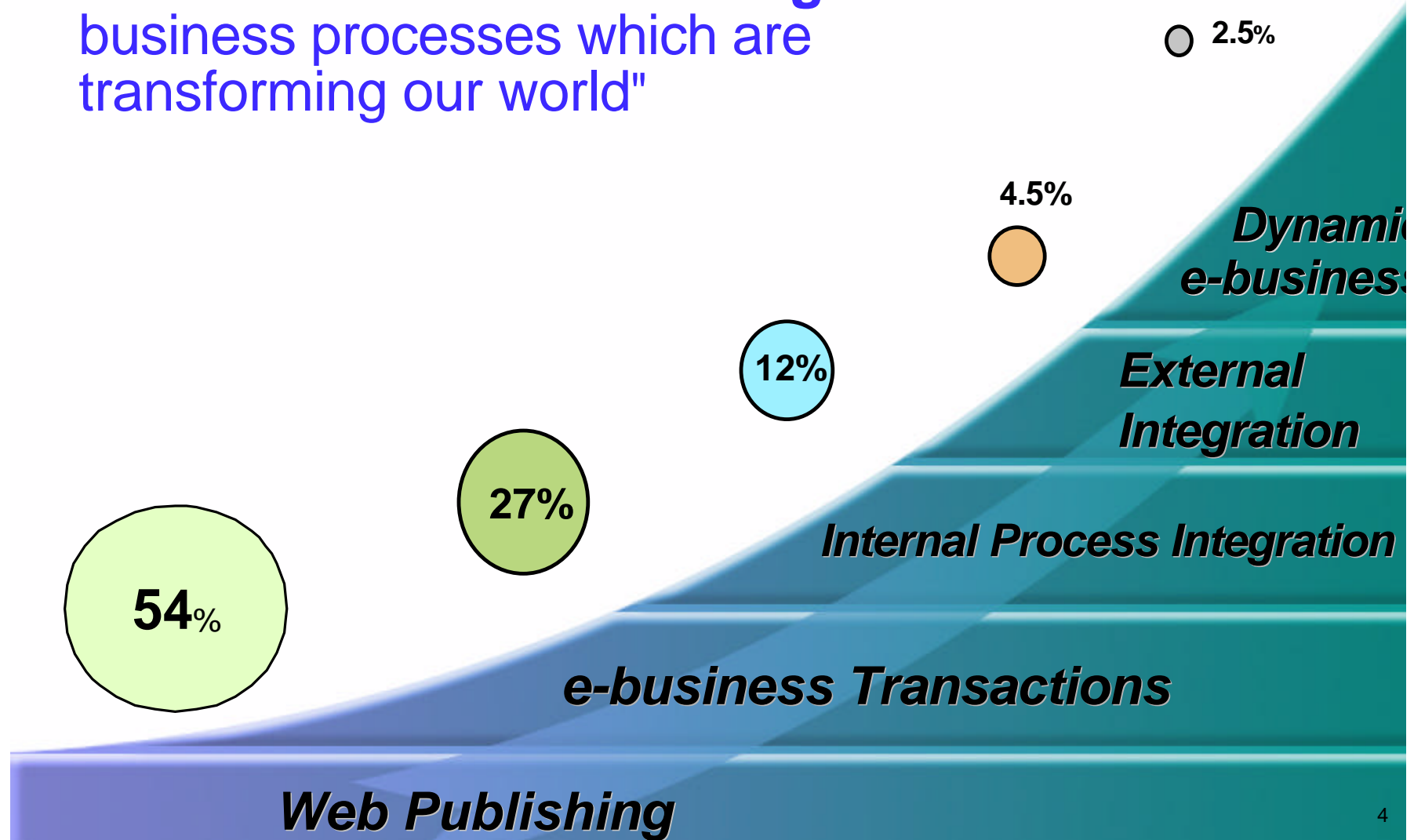


An open tool platform contributed by IBM to an Independent open source organization



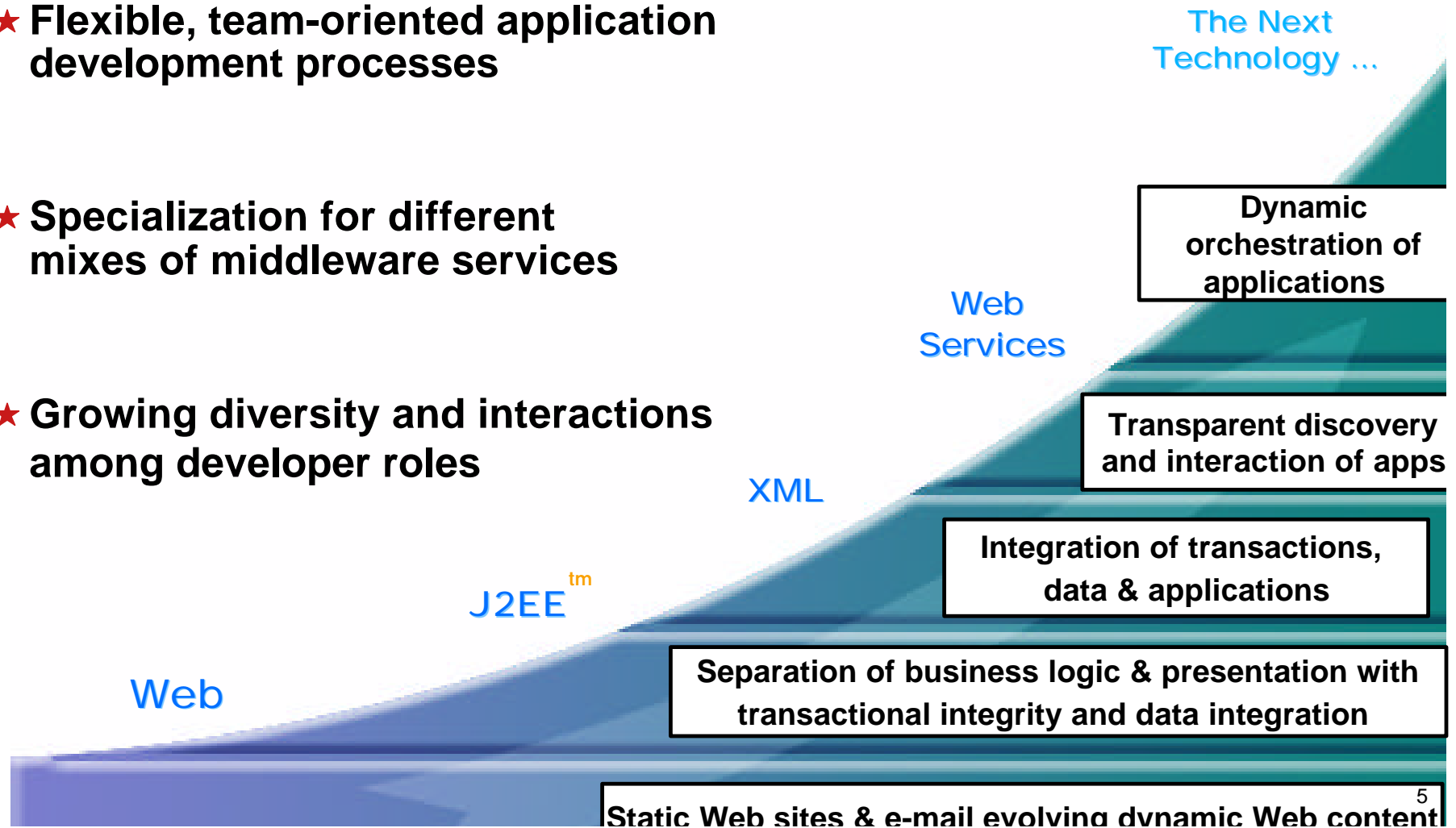
The evolution of e-business

"A long term trend toward the creation of more **automated** and **integrated** business processes which are transforming our world"



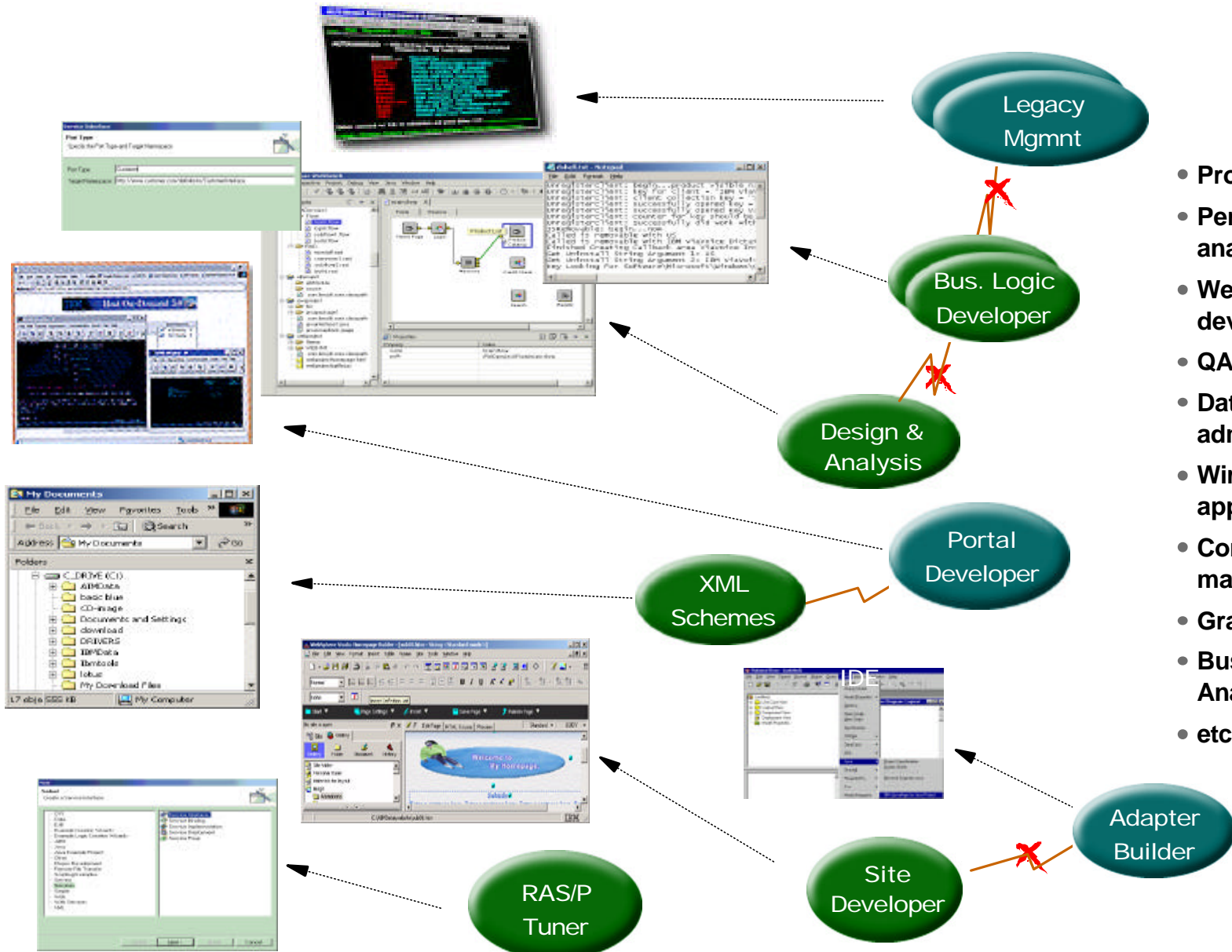
Application Development is the Key to Unlocking Dynamic e-business

- ★ Integration of emerging technologies and managing their effect on processes
- ★ Flexible, team-oriented application development processes
- ★ Specialization for different mixes of middleware services
- ★ Growing diversity and interactions among developer roles



Proliferation of Poorly Integrated Development Tools

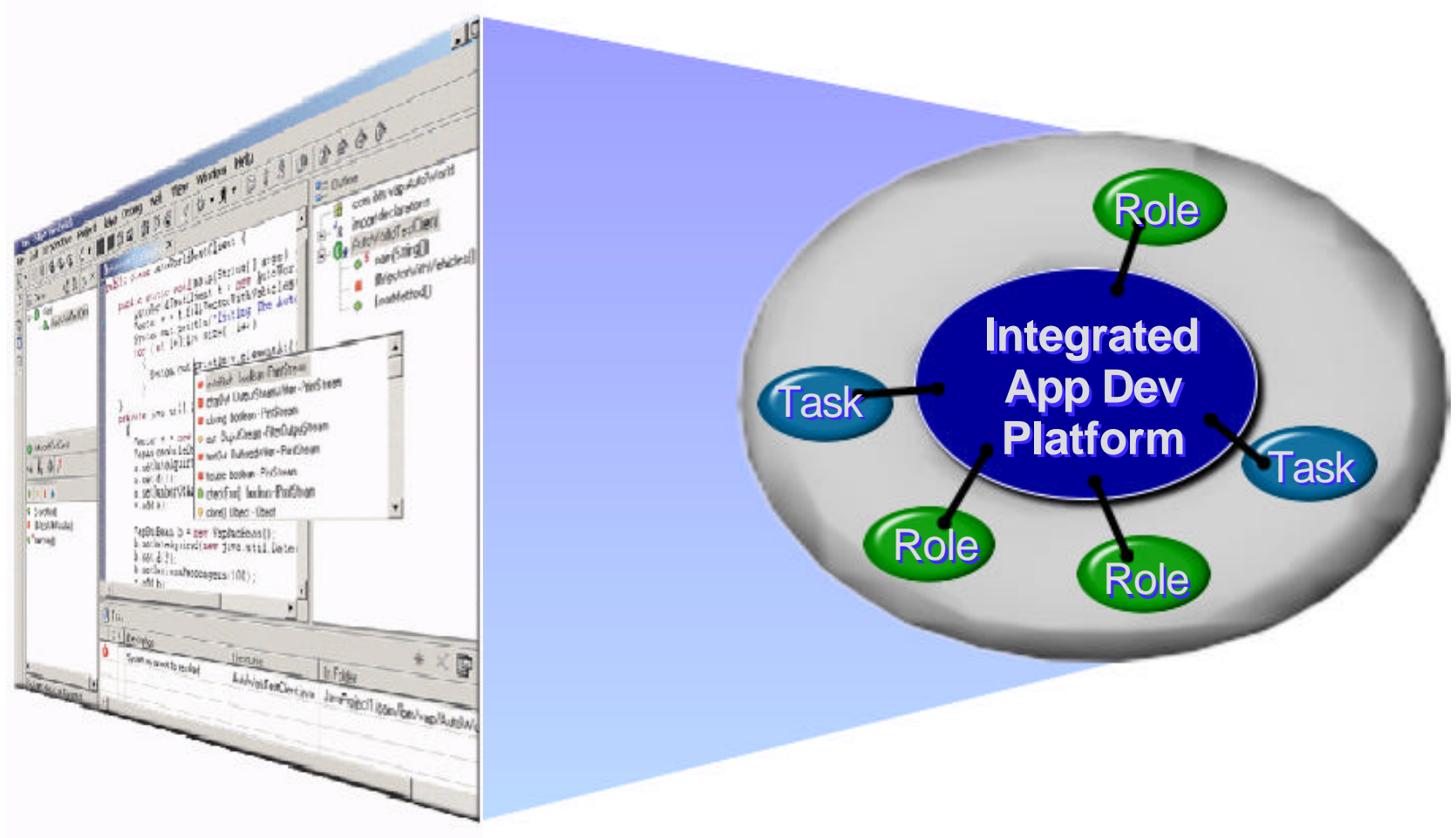
Rapid Growth in Diversity & Interdependencies of Roles & Tasks



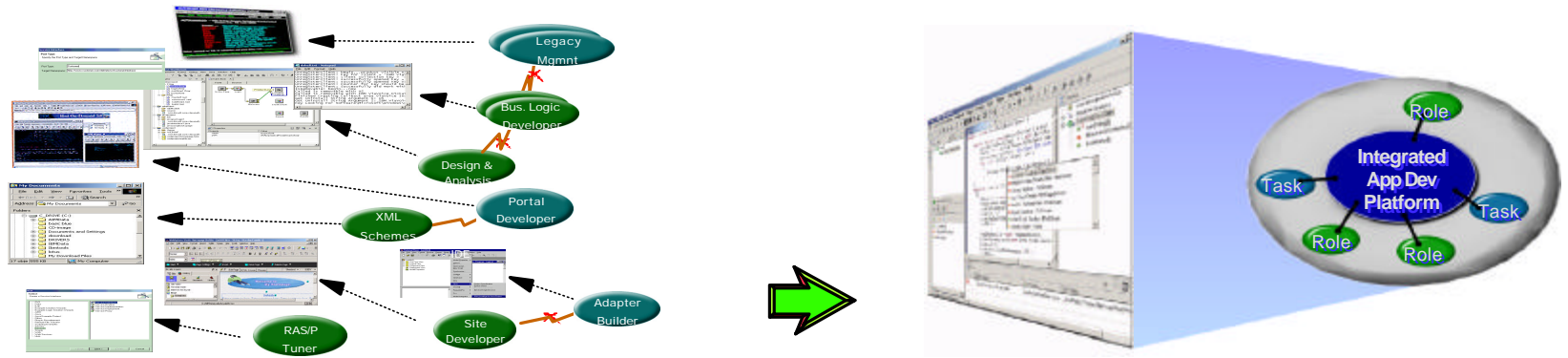
- Programmers
- Performance analysts
- Web Content developers
- QA teams
- Database administrators
- Wireless / voice app developers
- Configuration managers
- Graphics artists
- Business Rule Analysts
- etc.

A "Portal-like" Approach for e-business Development

An integrated experience unlocks greater productivity by bringing order, collaboration and integration to rapidly expanding e-business development processes



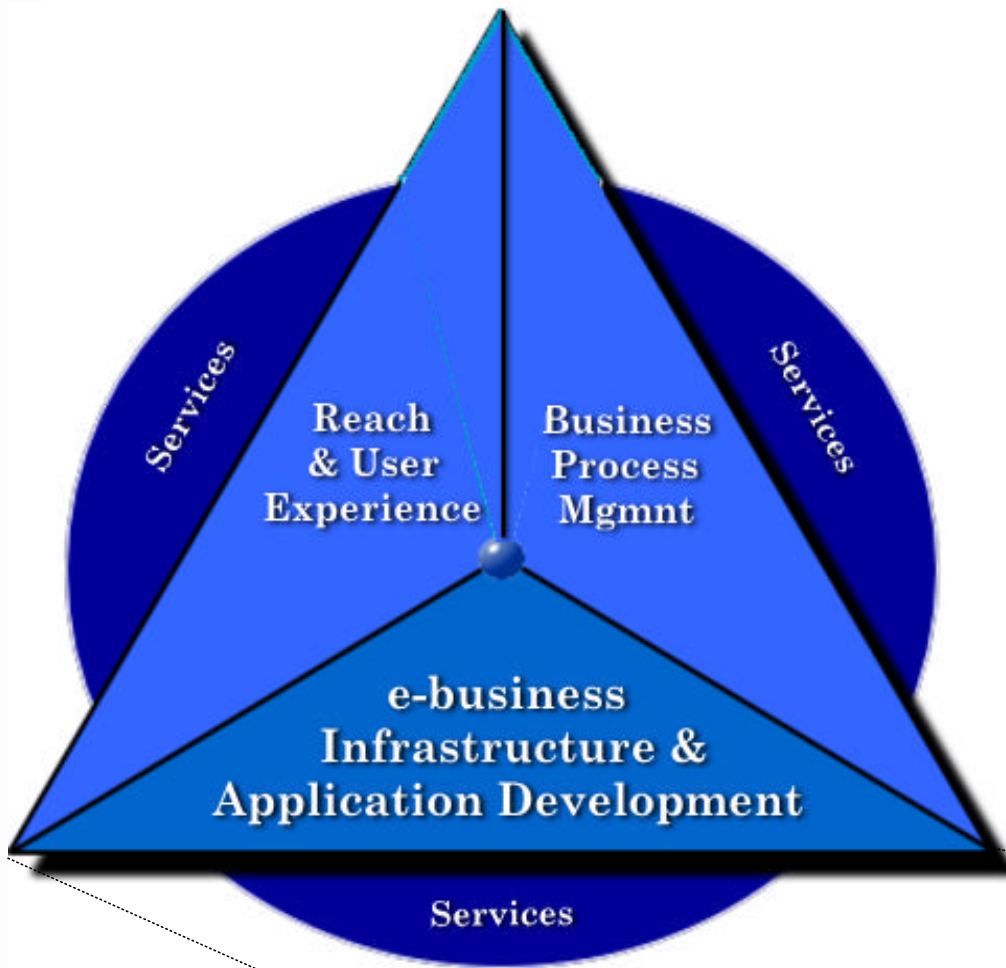
Keys to Significant Productivity Gains



Productivity Drag	Solution
Most AD environments involve more than one tool from multiple suppliers	Best-of-breed tools working together as an integrated environment
Multiple incompatible tools for <u>different runtimes</u>	Single AD platform for all middleware & servers
Iterative runtime-based <u>deploy, test & debug</u>	Integrated runtime -> rapid develop-test iteration
Poor integration of <u>lifecycle & specialized tools</u>	Seamless integration & customization of all tools - organized by tasks & roles
Slow integration of <u>emerging technologies</u>	Rapid deployment via dynamic plug-ins
No common way to view & leverage <u>assets</u>	A federated, dynamic view of all assets

WebSphere Software Platform

Application Development



Help customers deliver, grow & differentiate their e-business to sustain competitive advantage

Tools + Infrastructure + Open Technology + Community

Higher Quality Applications
in a
of the Time
Fraction

Building From Established Leadership

★ Rapidly Growing Developer Community

- 600,000 registered developers
- 5,000 trained SI professionals
- More than 150 worldwide user groups
- 300K downloads & 20M Web hits this year

**WebSphere®
Developer
Domain**

technical information on the
WebSphere software platform
for e-business

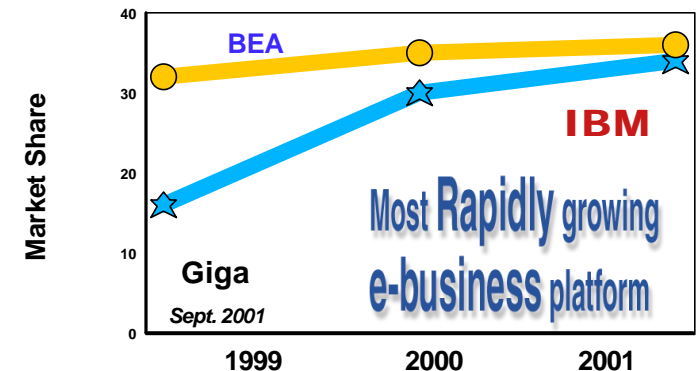
Powered by WebSphere and DB2®



developerWorks
celebrates its
second anniversary

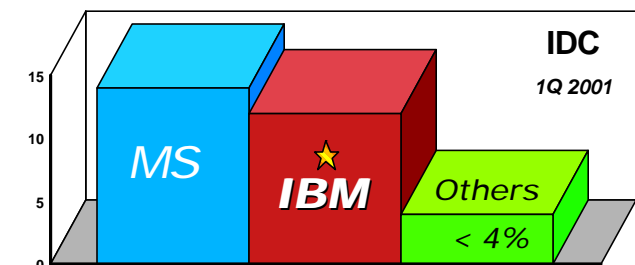
★ e-business Platform Leadership

- Growing 10x the rate of nearest competitor
- 10 consecutive quarters of double digit growth
- 75% YtY revenue growth for 3Q 2001



★ Application Development Leadership

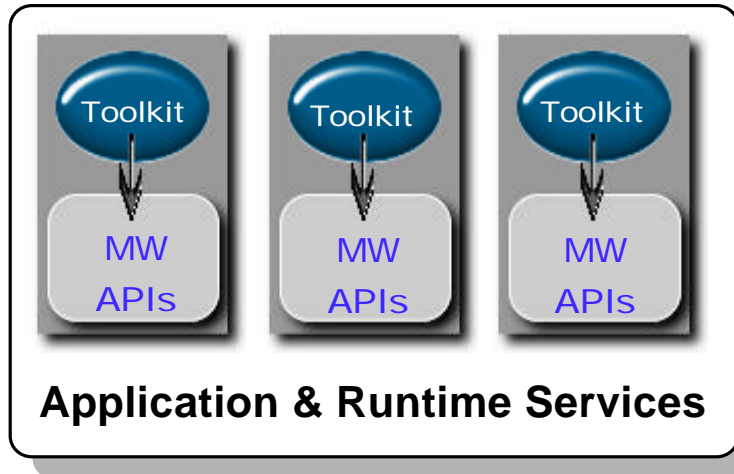
- Market leader in Java development
- 2 consecutive years of double digit growth
- JDJ Readers "Best Java IDE" past 3 years
- First to integrate Web services standards



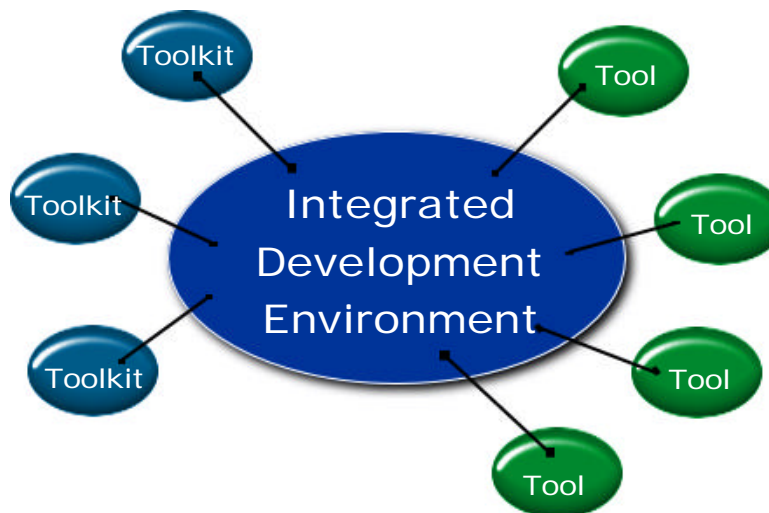
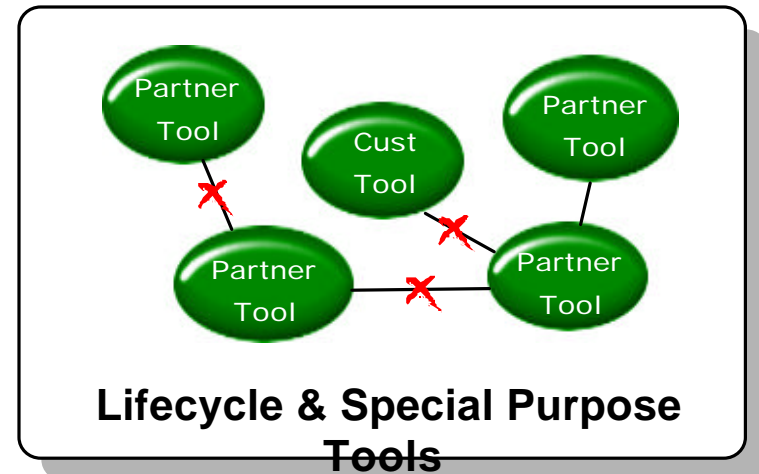
A Comprehensive, Integrated AD Environment

Leveraging the Power of Open Integration Technology

What type of application needs to be built?



What are the developer roles and processes involved?

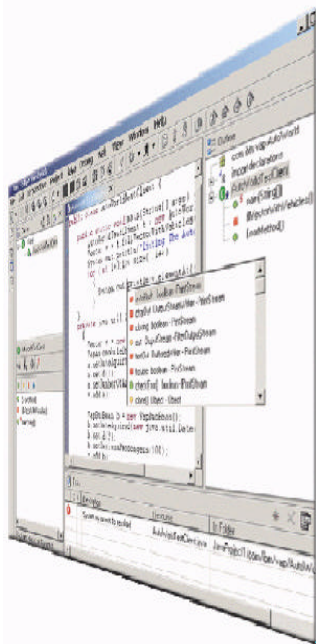
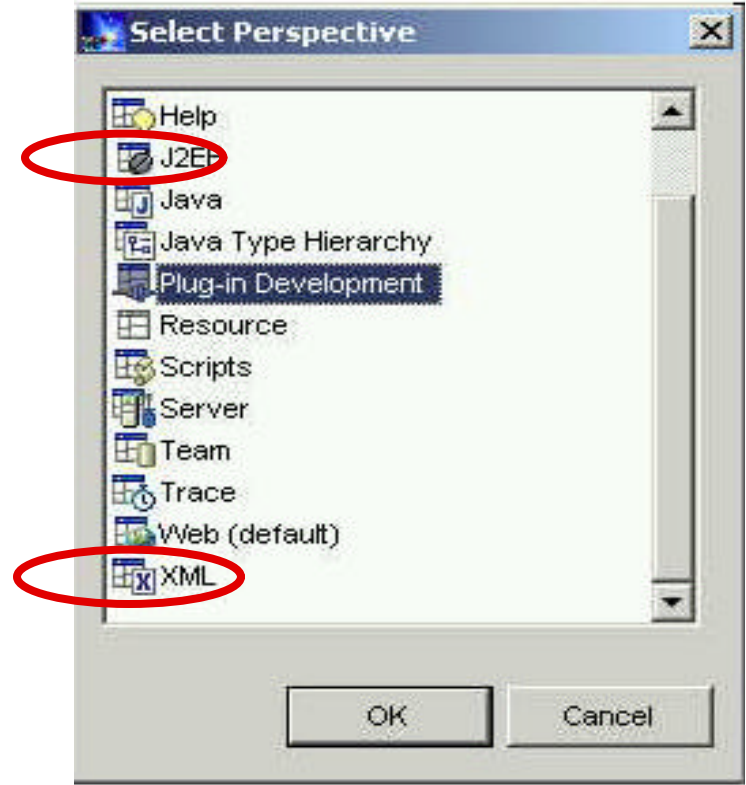


WebSphere Studio Workbench

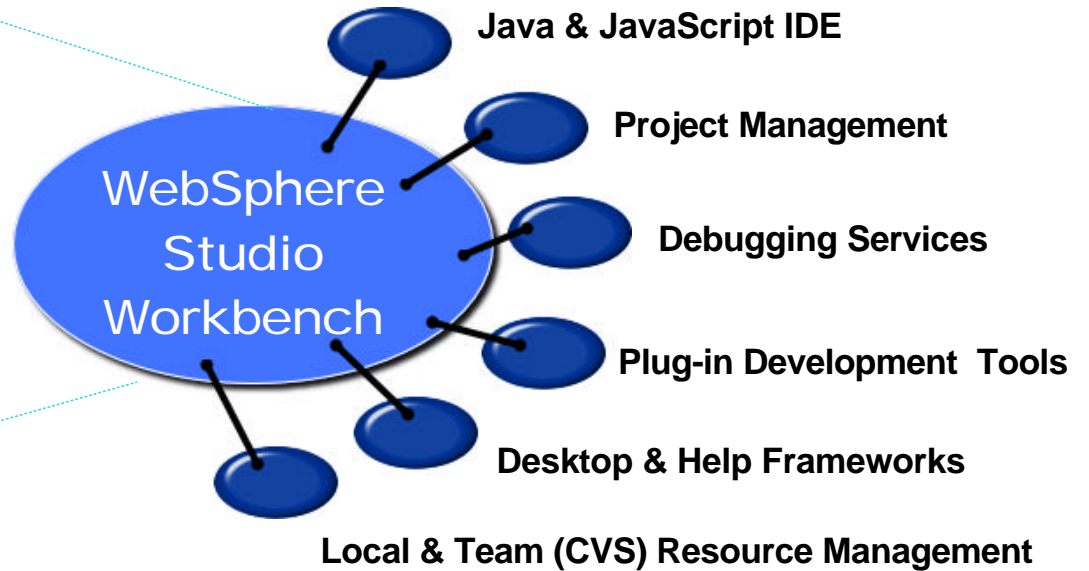
An Open Tool Integration Platform

A personalized, extensible development platform organized via developer

"Perspectives"



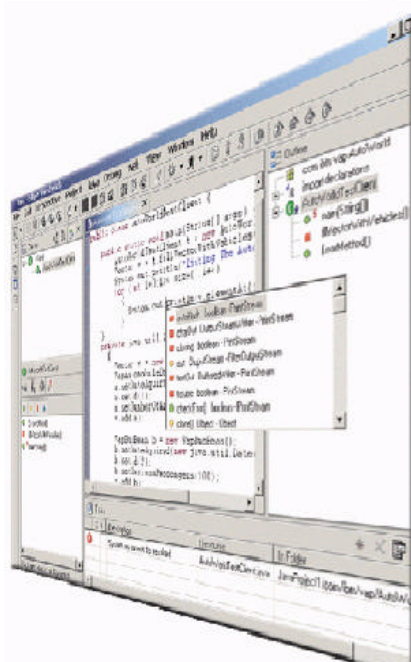
Products built with Eclipse inherit these capabilities plus 'plug-ins' built by others



WebSphere Studio Workbench

An Open Tool Integration Platform

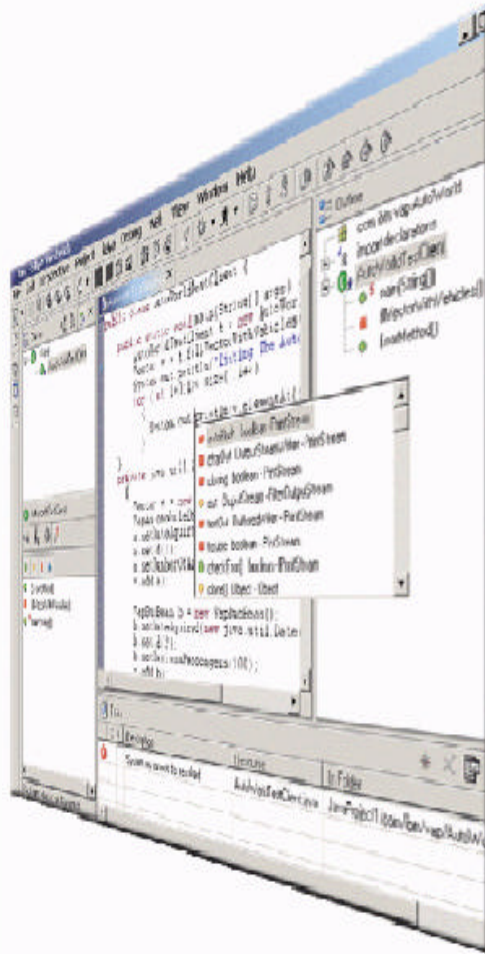
- ▶ Everyone is **Integrated** with standards, the workbench, and plug-in tools
- ▶ Everyone is **Connected** w/ assets managed in people via common store
- ▶ Everyone is **Dynamic** and the tools adapt to the change
- ▶ Everyone has **Status** of tasks, artifacts & projects
- ▶ Everyone has their **Perspective** of a project based on their role



-
- Intra-tool Collaboration (Function Sharing)
 - Control & Flow Among Tools
 - Metadata Integration (Artifact Descriptors)
 - Desktop Integration (Perspectives)
 - Project Artifacts (Repository)

The New WebSphere Studio Family

IBM's Development Solution for e-business



**IBM Server
& Middleware
Tools**

**Partner Tools
& Middleware**

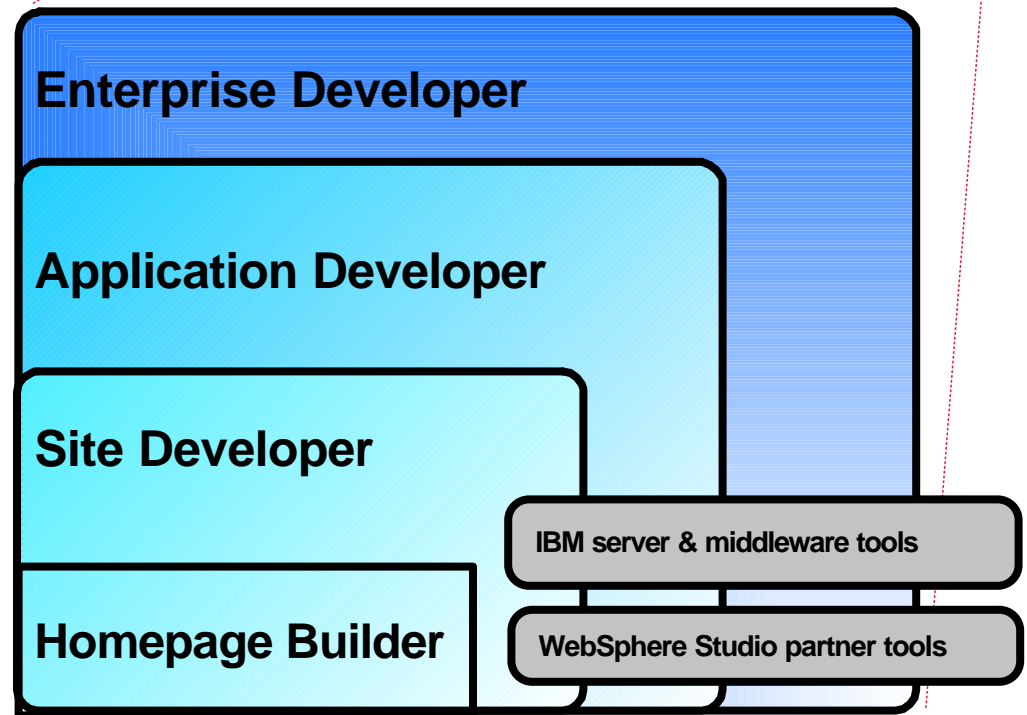
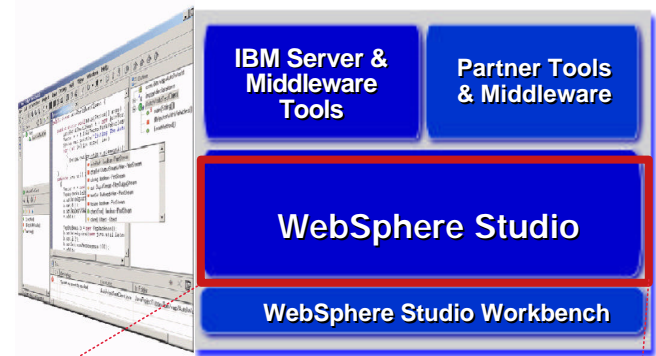
WebSphere Studio

WebSphere Studio Workbench

The New WebSphere Studio

Fast, Easy and Powerful

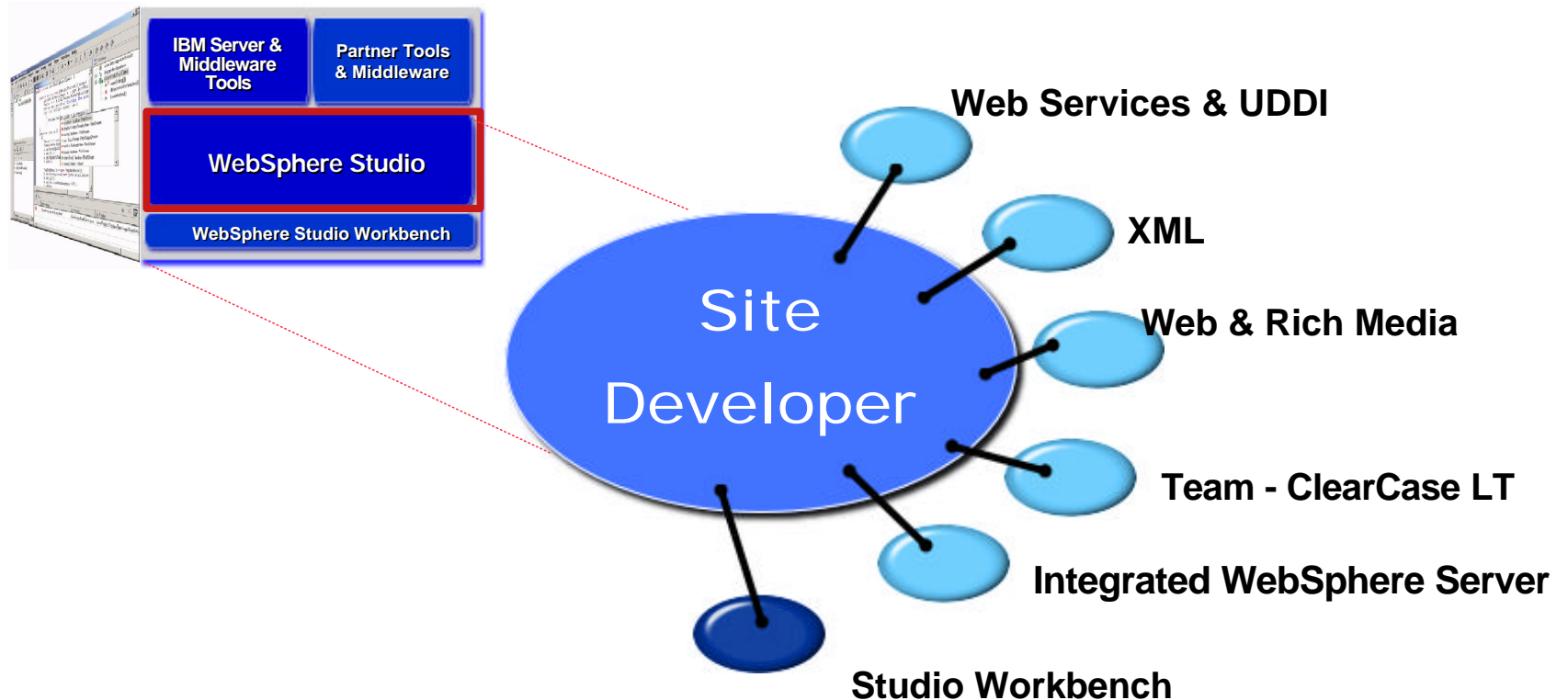
- ★ A single, comprehensive IDE with unprecedented flexibility & extensibility
- ★ Configurations add or subtract "perspectives" to meet the needs of specific developer roles
- ★ Extend and customize with partner, customer & IBM plug-ins
- ★ Common development environment across Windows and Linux



The New WebSphere Studio

Site Developer

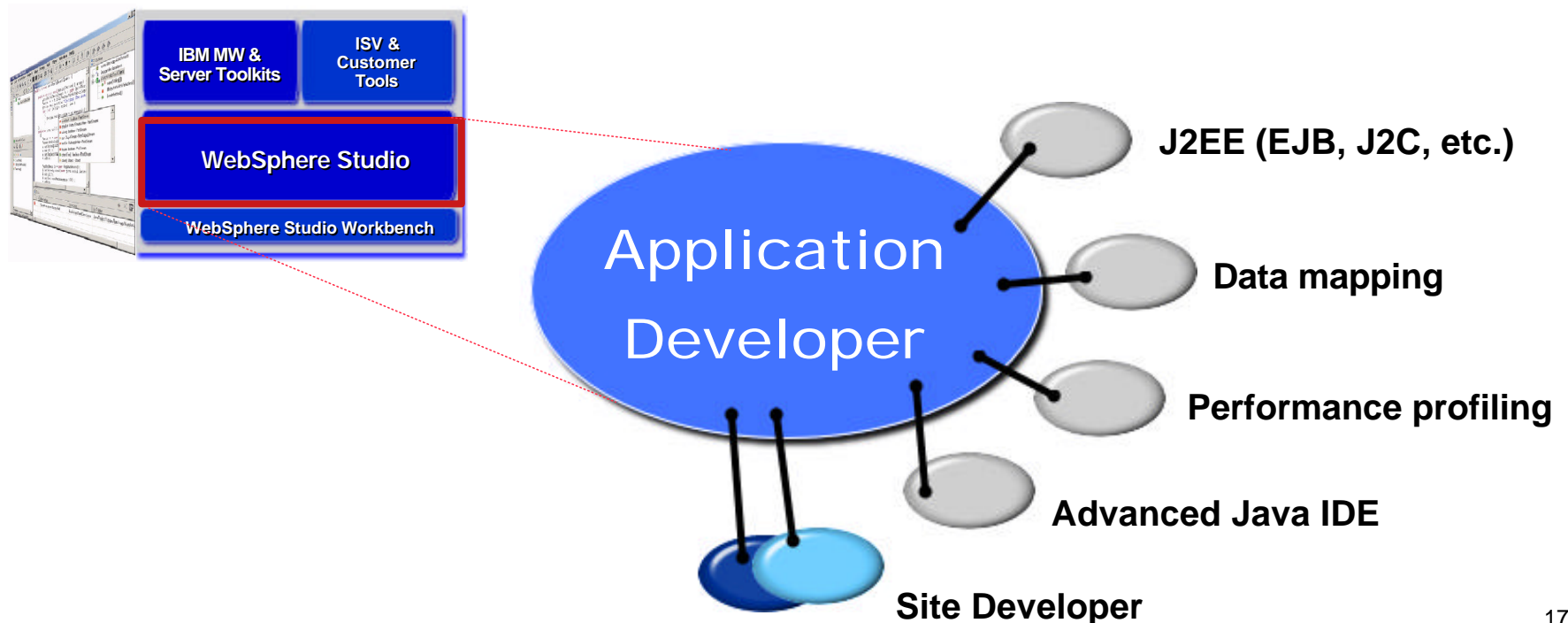
- ★ For professional developers of dynamic Web applications & sites
- ★ Delivers integrated support for open Web standards, including Java, JSP, XML, Rich Media & Web services tools
- ★ Includes Rational ClearCase LT as a team development option



The New WebSphere Studio

Application Developer

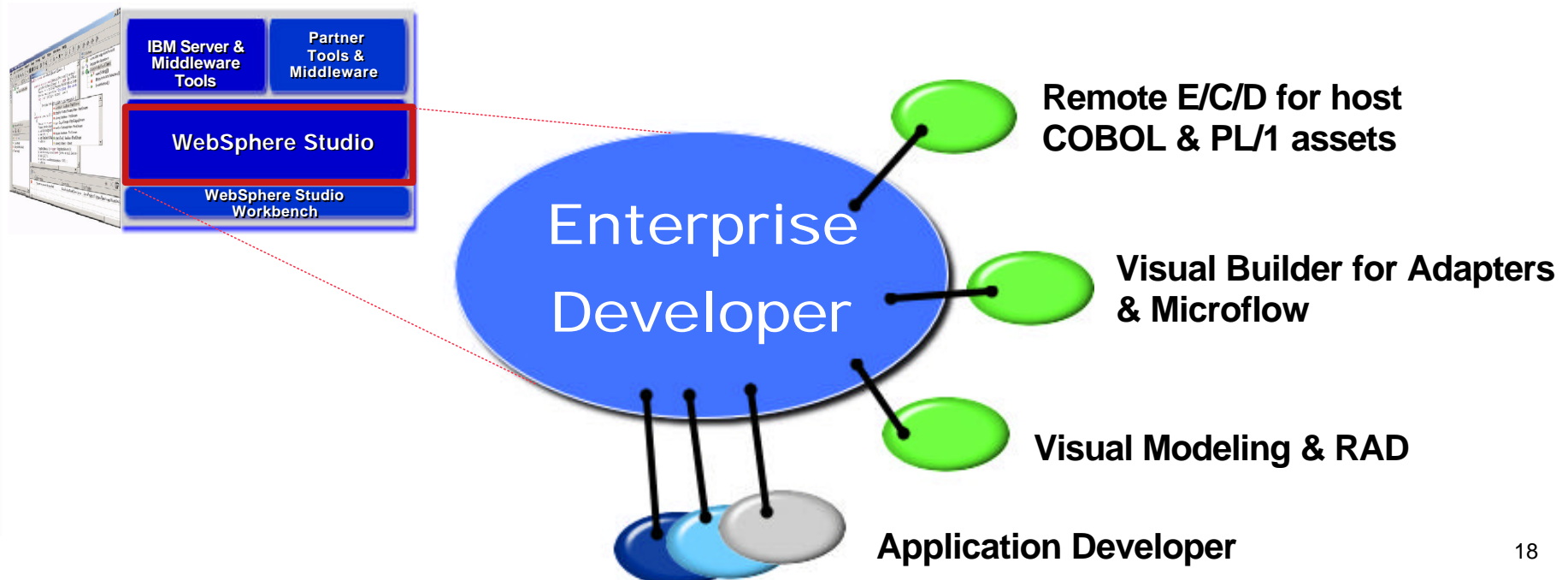
- ★ For professional developers of Java & J2EE applications, requiring integrated Web, JSP, XML & Web services support
- ★ Advanced tools for code generation, performance tuning & quality
- ★ Includes a highly integrated WebSphere Application Server test environment and deployment automation tools



The New WebSphere Studio

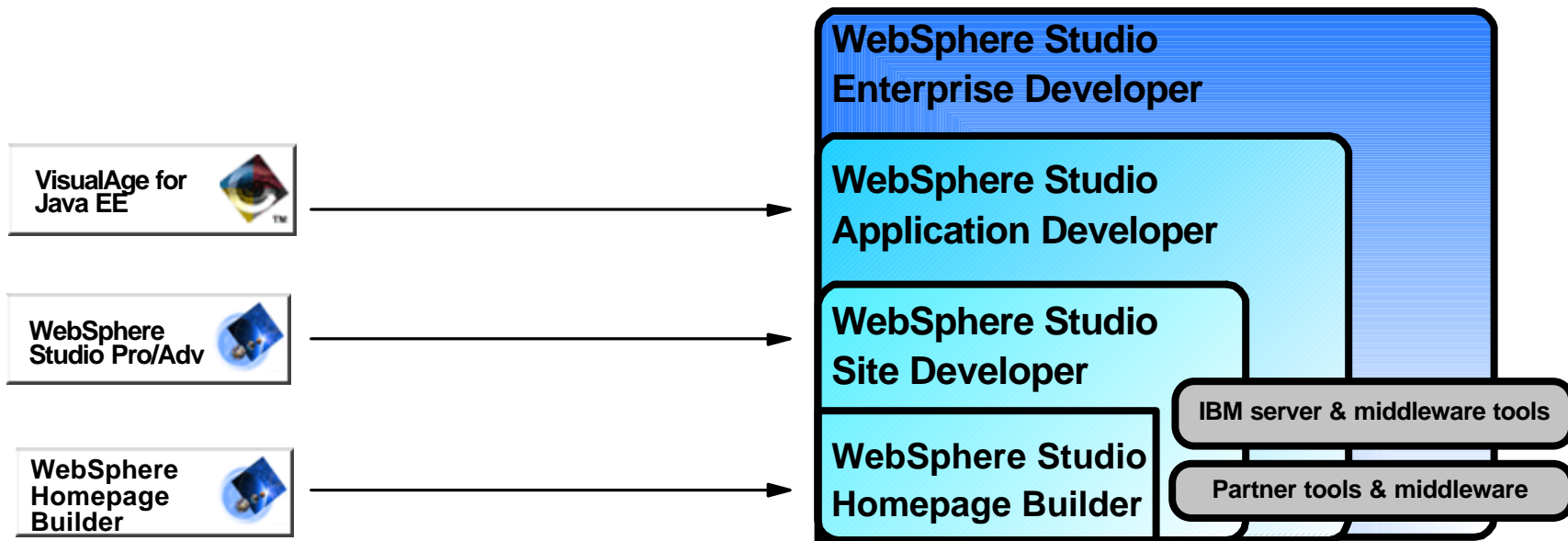
Enterprise Developer

- ★ For developers & integrators of advanced J2EE & Web services
- ★ RAD tools for visual application modeling, composition & adaptability (e.g., business rules)
- ★ Advanced EAI tools for generating adapters & dynamic microflows including integration of remote host assets



The New WebSphere Studio

Roll out



* Workbench includes entry Java IDE

Workbench	NOW	no cost via partner program
Homepage Builder	NOW (Not currently on Workbench)	\$99
Application Developer	NOW	\$3,499 (Free evaluation)
Site Developer	1Q 2002	TBA **
Advanced Site Developer	1Q 2002 (Preview Available Now)	TBA **
Enterprise Developer	1Q 2002	TBA **

** Final pricing & naming TBA

WebSphere Software Platform

Unprecedented Integration of Middleware & Tools

e-business Infrastructure

WebSphere Application Servers

WebSphere Business Integrator

WebSphere Portal Servers

WebSphere MQ Integrator

WebSphere Everyplace Servers

WebSphere Voice Server

WebSphere Commerce Suite

eServers (iSeries & zSeries)

DB2 Universal Database

CrossWorlds

⋮
More to come

The WebSphere software platform

Development Environments

Server
Tools

BPM
Tools

Portal
Tools

Messaging
Tools

Mobile
Tools

Voice
Tools

Commerce
Tools

eServer
Tools

Database
Tools

BPM
Tools

"Plug-Ins" to WebSphere Studio



A Customized Development Environment

Creating an Adaptable, Voice-enabled B2B Commerce application

Integrated, Roles-based Team Development

Example



Holosofx - Model & Simulate Business Process

Rational Suite - Support Full Life Cycle Activities

CommerceQuest - Build and Link e-business Processes

WebSphere Voice Tools - Enable for Voice & Wireless

Versata Studio - Enable Easily Adaptable Business Rules

Holosofx

Rational
Suite

Commerce
Quest

WebSphere
Voice
Toolkit

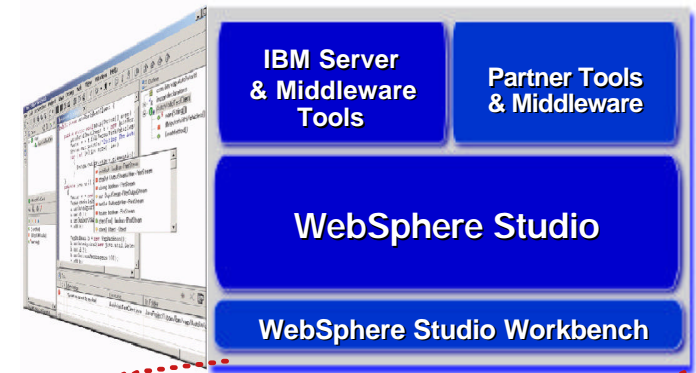
Versata
Studio

WebSphere Studio Application Developer

WebSphere Studio Business Partner Program

PartnerWorld for Developers

www.ibm.com/partners



★ Access to WebSphere Studio Workbench

★ Technical & product enablement

- Education and Training
- Downloads and Papers
- Technical Support

★ Ready for WebSphere Studio program

- Tests to validate tools meet Workbench API
- Emblem to identify 'Ready' products
- WebSphere Studio 'Ready' Web site & other co-marketing programs



WebSphere Studio Business Partner Program

Value: Ready-for-WebSphere

- ★ **Brand Recognition:** Leverage WebSphere brand recognition with the Ready for WebSphere Studio program emblem
- ★ **Customer Confidence:** Help reduce the time customers need to evaluate the tools software and make their purchase decision
- ★ **Superior Solutions:** Enable easier implementations and increased quality of solutions
- ★ **Broad Support:** Workbench tools, education and technical support

<http://www.developer.ibm.com/welcome/wstools/workbench.html>



IBM Developer Community

WebSphere Developer Domain and Programs

What's New?

- **WebSphere for Newcomers** **Start here (20,000 hits 1st month)**
- **WebSphere Evaluation Center** **Your one stop location for downloads**
- **WebSphere Preview Technology** **Private UDDI Registry**
- **WebSphere Business Practices Zone** **Proven development techniques**

**WebSphere[®]
Developer
Domain**

technical information on the
WebSphere software platform
for e-business

Powered by WebSphere and DB2[®]



ibm.com/websphere/developer

WebSphere Innovation Centers

One-Stop-Shopping for WebSphere Studio Enablement

- ★ For sales
- ★ For technical assistance
- ★ For marketing



■ IBM WICs
■ Business Partner WICs
□ Business Partner WICs opening soon



Sales Support

Newly Available Collateral & Promotions

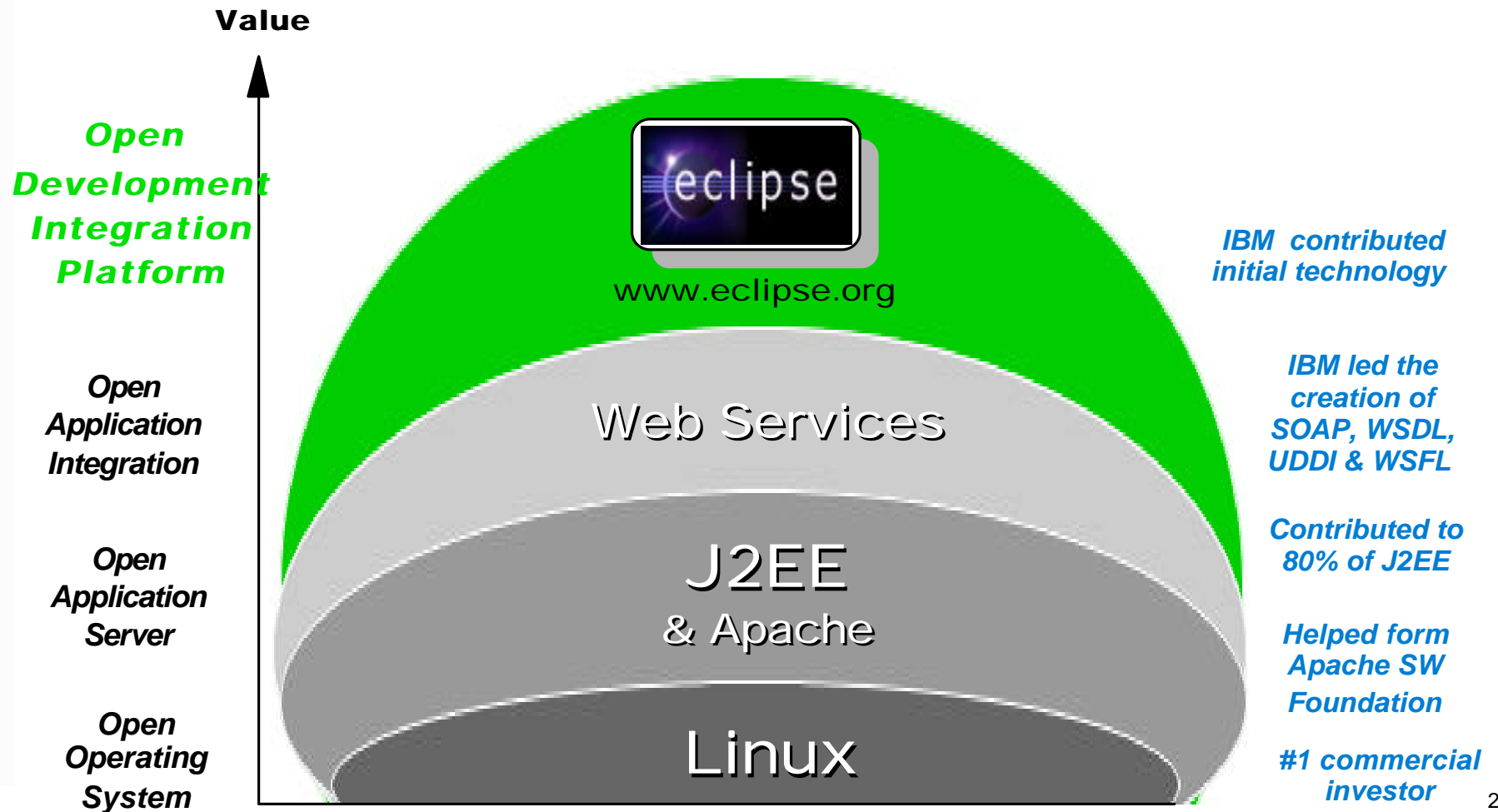


- ★ **WebSphere Studio V4.0 Application Developer Spec Sheet**
- ★ **VisualAge Enterprise Suite V3 Offering fact sheet**
- ★ **WebSphere Everyplace Access V1.1 Offering Fact Sheet**
- ★ **WebSphere Studio Workbench White Paper**
- ★ **Demonstrating Sales Promotion Value - Cost Analysis Work Sheets**
- ★ **WebSphere Studio Application Developer Product Review Guide**
- ★ **VisualAge for Java Product Transition White Paper**
- ★ **Application Development Vision and Strategy White Paper**
- ★ **More info & Web based demonstration - ibm.com/software/ad/adstudio**



Open Technology Leadership

The first AD integration platform to fully embrace open technologies, adopting the open approach that has been successful for Apache, J2EE & Linux



Eclipse - Broad Industry Participation

Over 1200 developers from 150 companies are participating in the Eclipse project, including these industry leaders ...

- Altoweb
- Asist
- Bowstreet
- BrowserSoft
- Cast Software
- CollabNet
- CommerceQuest
- Computer Assoc.
- Compuware
- Crystal Decisions
- Embarcadero
- Holosofx
- Instantiations
- Interwoven
- LegacyJ
- LogicLibrary
- Macromedia
- Merant
- Mercury Interactive
- Midcomp Intl.
- MKS
- NeuVis
- Peregrine
- QSSL
- Rational Software
- Red Hat
- Serena
- Sitraka
- Skyva
- Starbase
- SuSE
- Telelogic
- TogetherSoft
- Versant
- Versata
- Wily Technology

"Rational Software has been an early adopter of the Eclipse platform because we believe it delivers high value to software teams. We've been working closely with IBM to integrate our products into Eclipse...."
Dave Bernstein, Sr VP of Products, Rational Software

"The Eclipse community will allow developers to collaborate on enhancements to the Workbench technology and more rapidly integrate it within their own applications."
Brian Behlendorf, co-founder and CTO, CollabNet

"This has long been a dream of developers, and now IBM is providing the integration framework to make it possible."
Arun Gupta, CTO, NeuVis Software

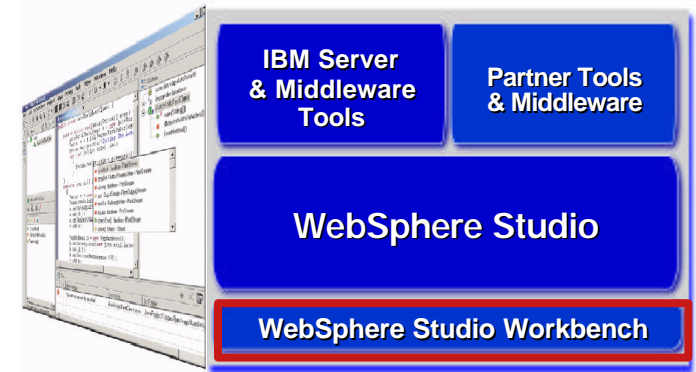


www.eclipse.org

Eclipse Workbench

An Open Development Integration Platform

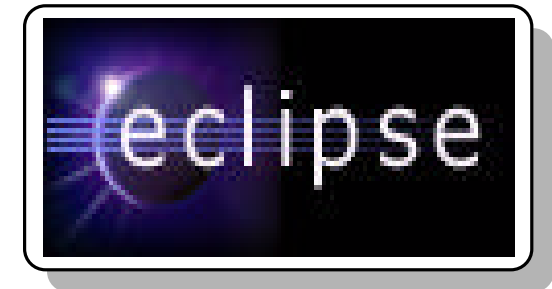
- ★ Enables vendors and customers to develop, customize and integrate tools and repositories via open standards
- ★ Based on Java with initial support for Linux & Windows
- ★ IBM has contributed the initial technology which is licensed via the Common Public License
- ★ IBM will continue to participate in Eclipse development and will adopt enhancements



Contribute



Adopt



www.eclipse.org

What's Next?



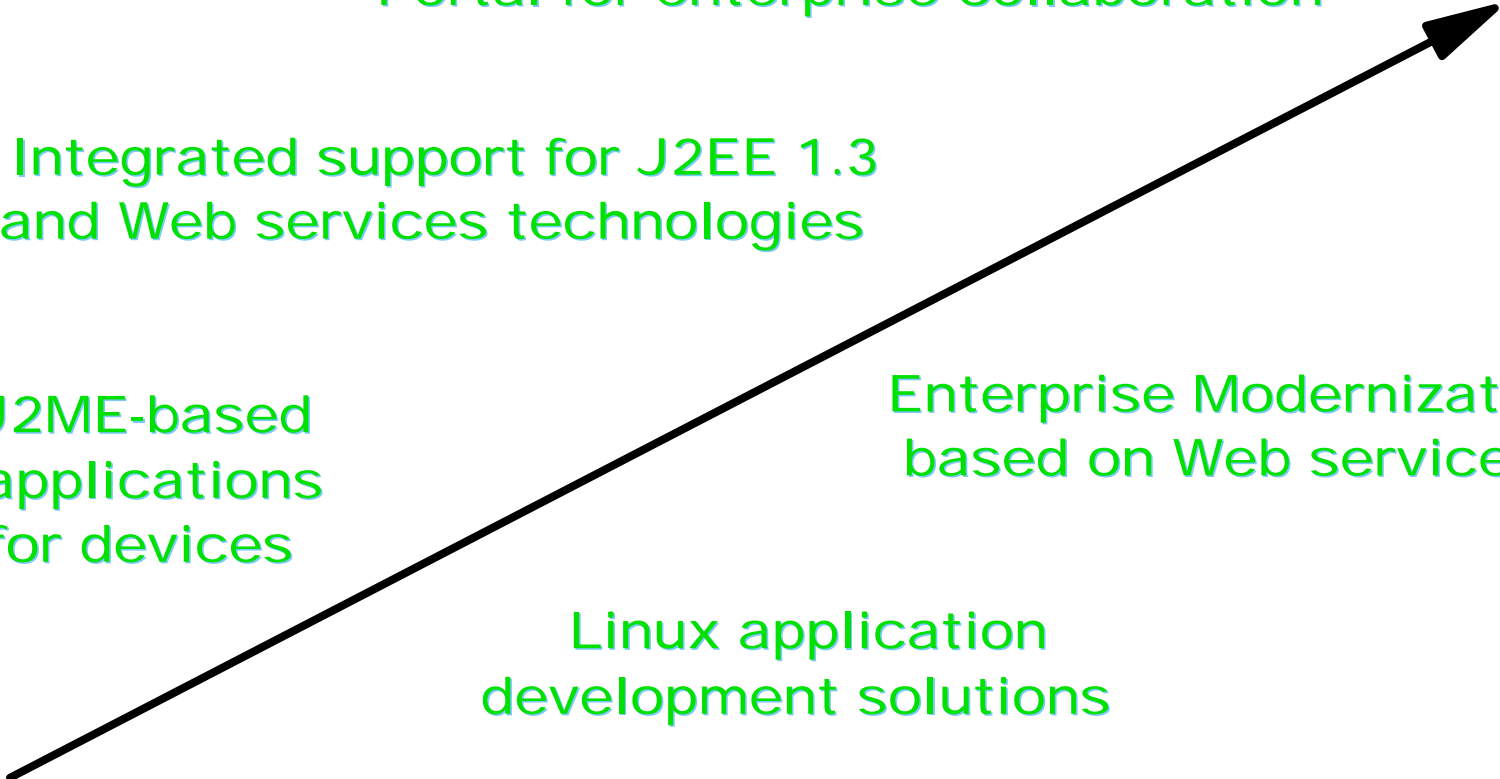
Integrated Development Resource Portal for enterprise collaboration

Integrated support for J2EE 1.3 and Web services technologies

J2ME-based applications for devices

Enterprise Modernization based on Web services

Linux application development solutions



Summary

- ★ **IBM and other industry leaders are unlocking the full power of open e-business software infrastructure through an equally powerful open application development (AD) platform**
- ★ **IBM and a broad set of partners are introducing the first AD integration platform to fully embrace open technology, adopting the open approach that has been successful for Apache, J2EE & Linux**
- ★ **This heralds a new era promising startling productivity gains -- higher quality applications in a fraction of the time -- due to unprecedented integration of process, tools, infrastructure & assets**
- ★ **IBM expands its leadership with developers and ISVs by contributing its rich AD integration platform to an open source organization and by introducing the new WebSphere Studio family**

Thank You

For More Information ...



- ★ **WebSphere Studio Information and Web Demo**
 - www.ibm.com/software/ad/adstudio

- ★ **WebSphere Studio Partner Program**
 - www.ibm.com/partnerworld

- ★ **Eclipse**
 - www.eclipse.org