



e-business

IBM WebSphere Host Integration Solution

Start Simple...Grow Fast.



IBM



Agenda

- Introduction
- Sales Objectives
- What the Experts Say
- Solution Overview
- Solution Benefits
- Competitors
- Customer Success Stories
- Summary





Objectives

- ◆ By the end of today's teleconference you should know:
 - What WebSphere Host Integration is and how it can work for you and your customers
 - What the products/solution offerings are today
 - Solution benefits for WebSphere Host Integration
 - Major competitors with WebSphere Host Integration products
 - Customer success stories where WebSphere Host Integration has been successful





What the experts say...

"The Web-to-host market is continuing on its significant growth path, with revenues rising 113.6% to \$240.0 million in 1999. Explosive growth will continue, with revenue reaching \$1.5 billion in 2004."

"U.S..... remote and mobile population in 1999 was expected to reach 35.7 million, and it will continue to grow at a 6.7% compound annual growth rate (CAGR) over the next five years. Smart handheld devices, pagers, and cellular phones as key mobile devices in various industries and for regular business use will provide new market opportunities for Web-to-host vendors."

Lucinda Borovick, International Data Corporation, IDC Bulletin #22447 - June 2000

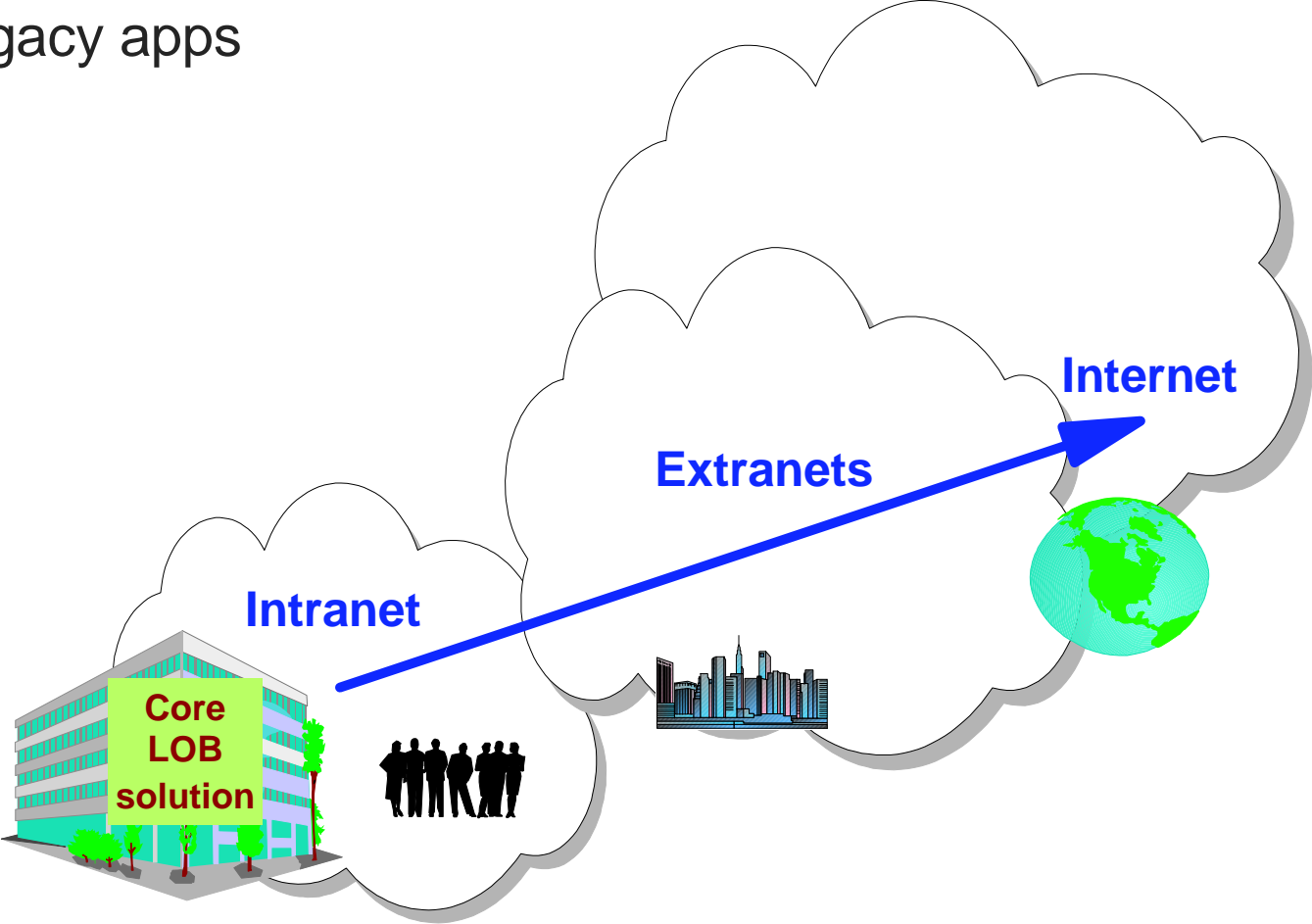




e-business

e-business strategy

- 70% of applications and data reside on host systems
- Recent eWeek article found 68% of spending is integration with legacy apps



Line-of-Business business tracking and accounting solutions	"Front Office" business operations solutions: Supply Chain Mgmt, Customer Relationship Mgmt, e-Commerce
Enable integrated e-business solutions that transform key business processes with Internet technologies	





e-Business Challenges

- How do I reduce complexity of implementing new e-business solutions?
- How do I leverage my current investments while positioning my business to take advantage of the e-business marketplace?





WebSphere Host Integration Solution

✓ Value

- Help protect and extend investment
- Improve user productivity
- Secure, scalable and multiplatform
- Fastest most cost effective way to integrate host applications with the Web
- Leverage the WebSphere Software Platform Solutions



✓ IBM Personal Communications

Professional emulation

✓ WebSphere Host On-Demand

Java emulator installed on a server and accessed from a web browser

✓ IBM Screen Customizer

For existing application rejuvenation to a dynamic graphics interface

✓ WebSphere Host Publisher

For existing application integration with WebSphere e-business applications

✓ Host Access Toolkit

Host Access Beans for Java, Host Access Class Library, tools for host integration into application development projects

✓ IBM Communications Server

SNA gateway and TN Server

✓ WebSphere Application Server

Application web server providing a multi-discipline development environment with web management tools

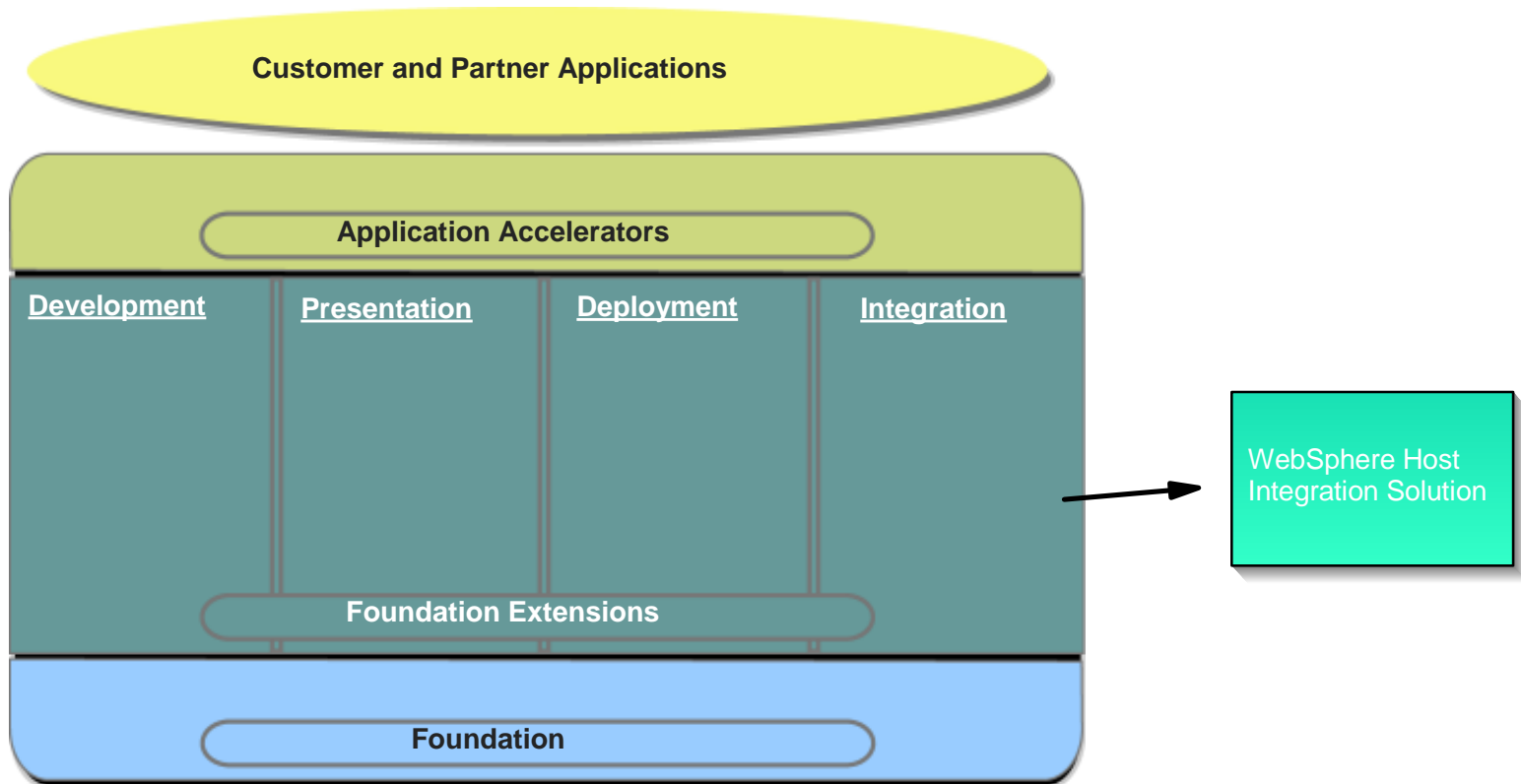
✓ WebSphere Studio

Web application designer providing a suite of tools to design, develop and publish web sites with dynamic applications

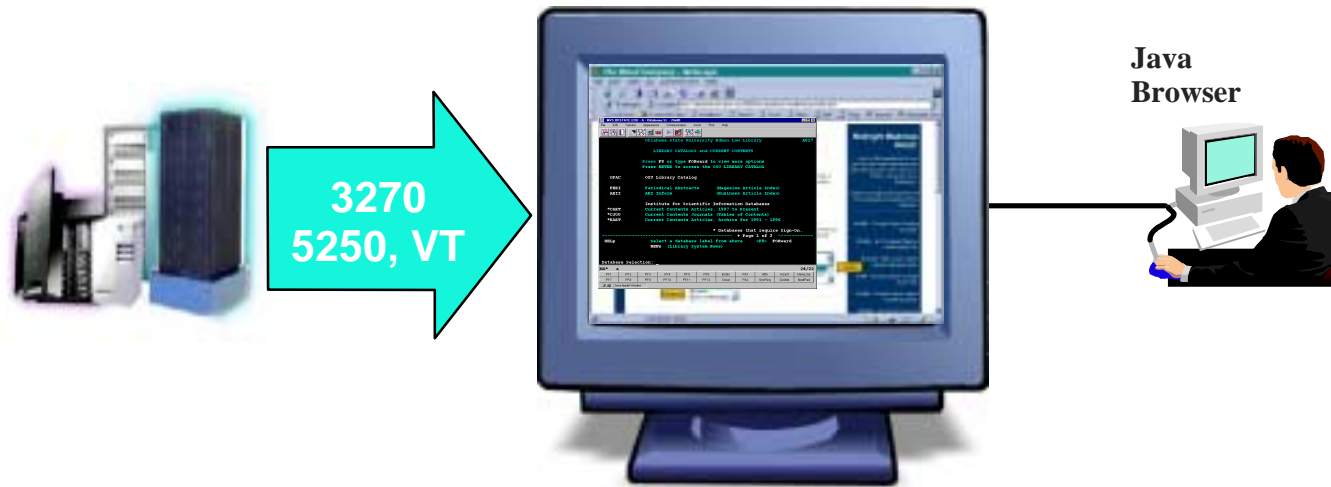




WebSphere Software Platform



WebSphere Host On-Demand*

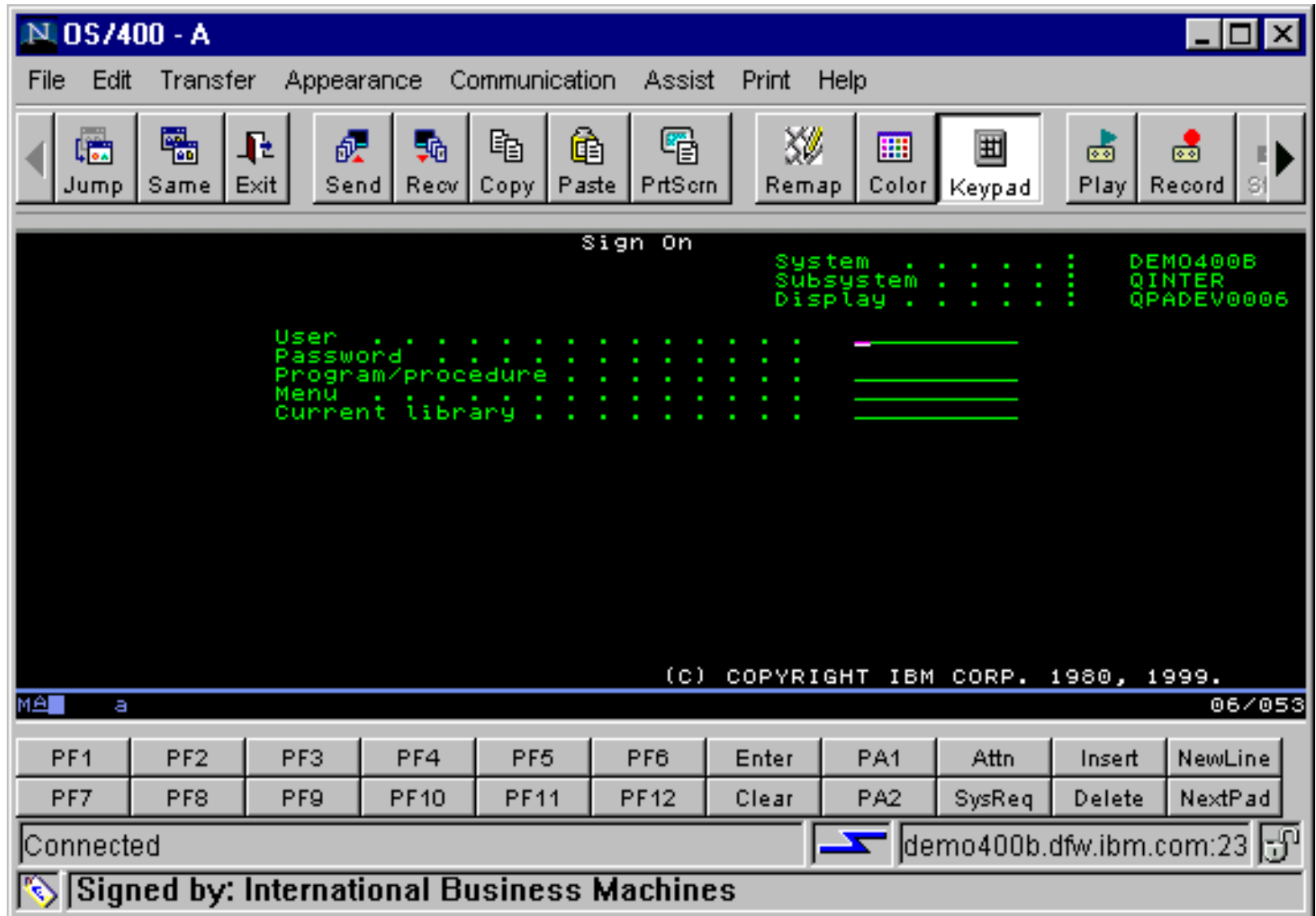


Java Emulation

- Extends host application reach to new users
- Reduces I/T costs through centralized install and administration
- Supports client and server platforms of choice
- SSL based security including client and server authentication
- Requires no middle-tier server

*Available through the Host Access Client Package or the WebSphere Host Integration Solution Package

Host On-Demand ... "Green Screen"



OS/400 - A

File Edit Transfer Appearance Communication Assist Print Help

Jump Same Exit Send Recv Copy Paste PrtScrn Remap Color Keypad Play Record

Sign On

```
System . . . . . DEMO400B
Subsystem . . . . . QINTER
Display . . . . . QPADEV0006

User . . . . . _____
Password . . . . . _____
Program/procedure . . . . . _____
Menu . . . . . _____
Current library . . . . . _____
```

(C) COPYRIGHT IBM CORP. 1980, 1999.

MA a 06/053

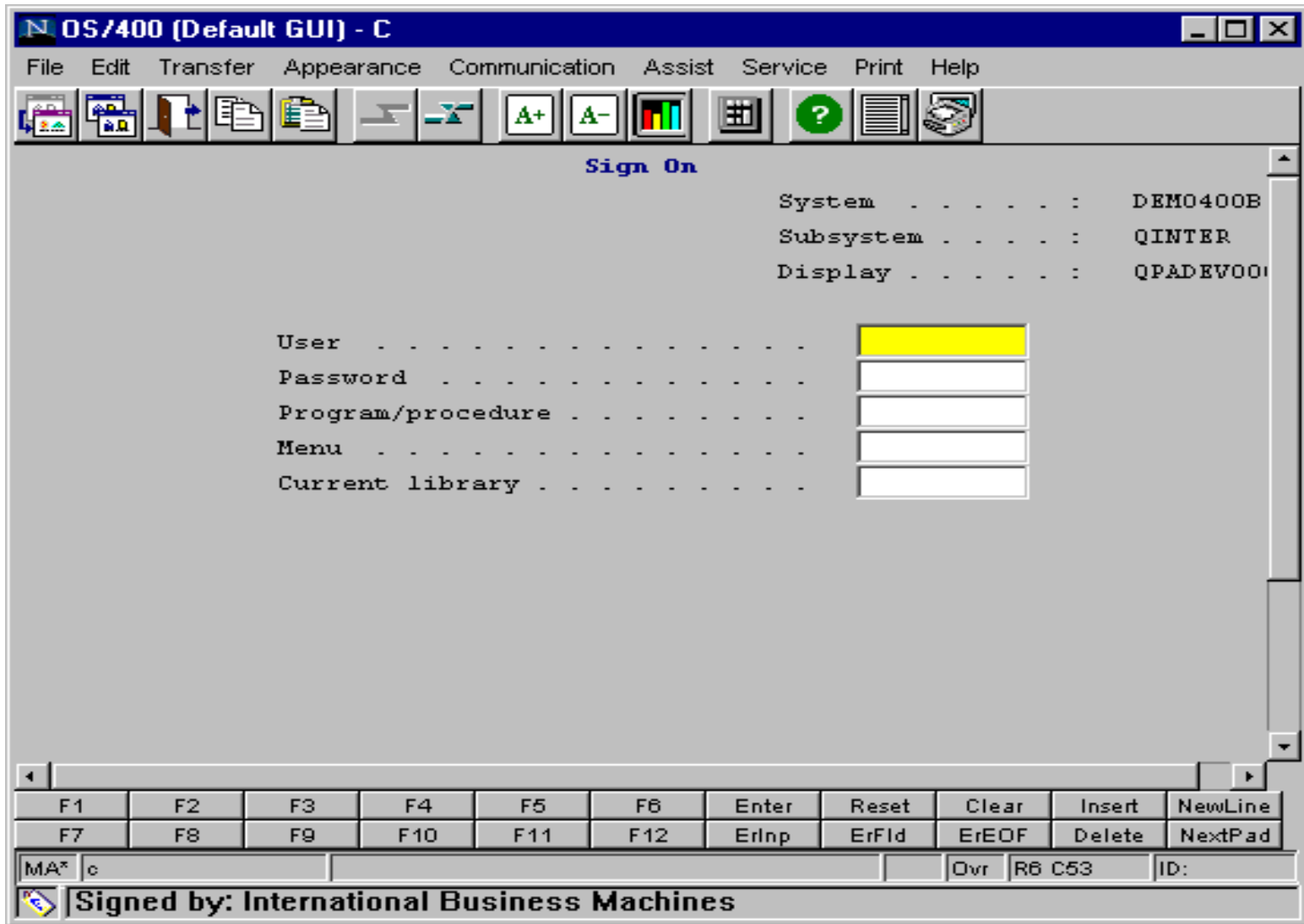
PF1	PF2	PF3	PF4	PF5	PF6	Enter	PA1	Attn	Insert	NewLine
PF7	PF8	PF9	PF10	PF11	PF12	Clear	PA2	SysReq	Delete	NextPad

Connected demo400b.dfw.ibm.com:23

Signed by: International Business Machines



Host On-Demand ... Default GUI





Host On-Demand with Screen Customizer





WebSphere Host Publisher*



Host Publishing

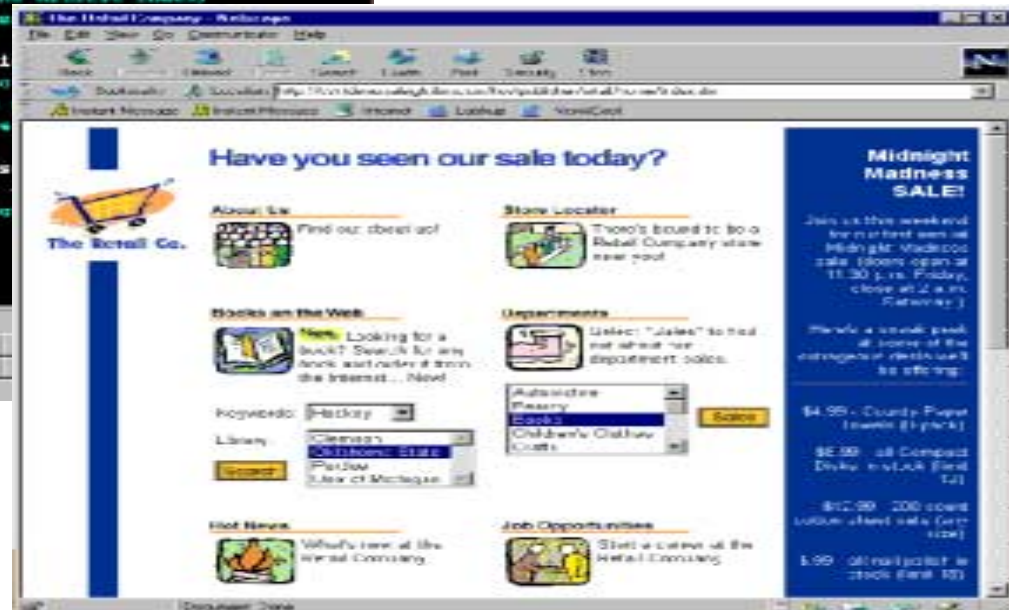
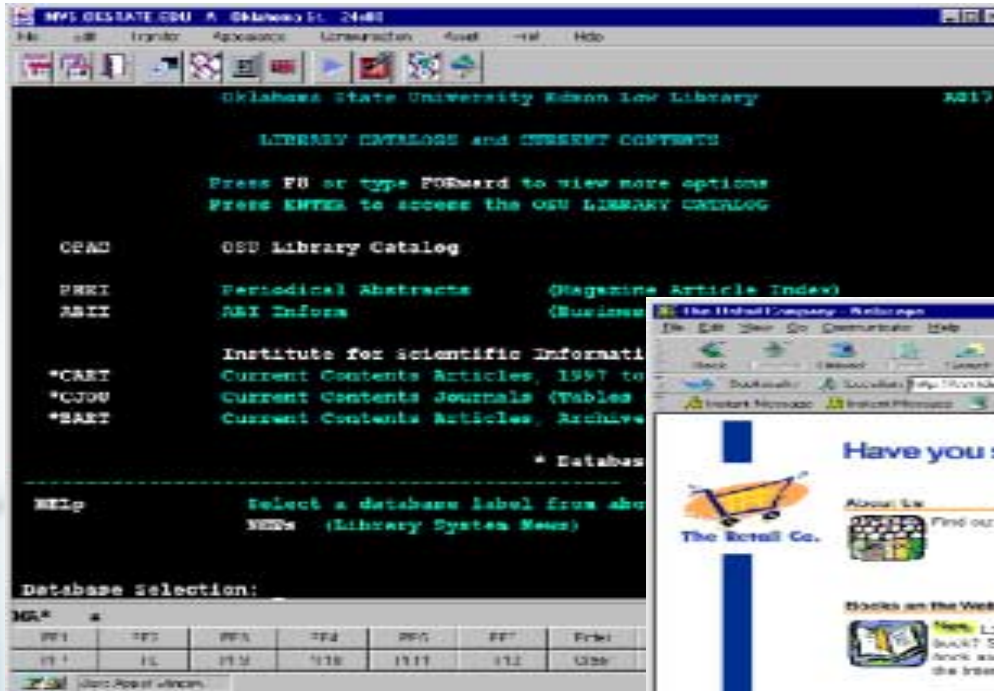
- Extends legacy applications to web browser users and new e-business applications
- Supports HTML, XML and Java access to legacy applications
- Protects and leverages existing I/T investments
- Easily create composite applications by integrating multiple host sources into a single HTML page or Java interface

*Available through the WebSphere Host Integration Solution Package, and Sold Separately

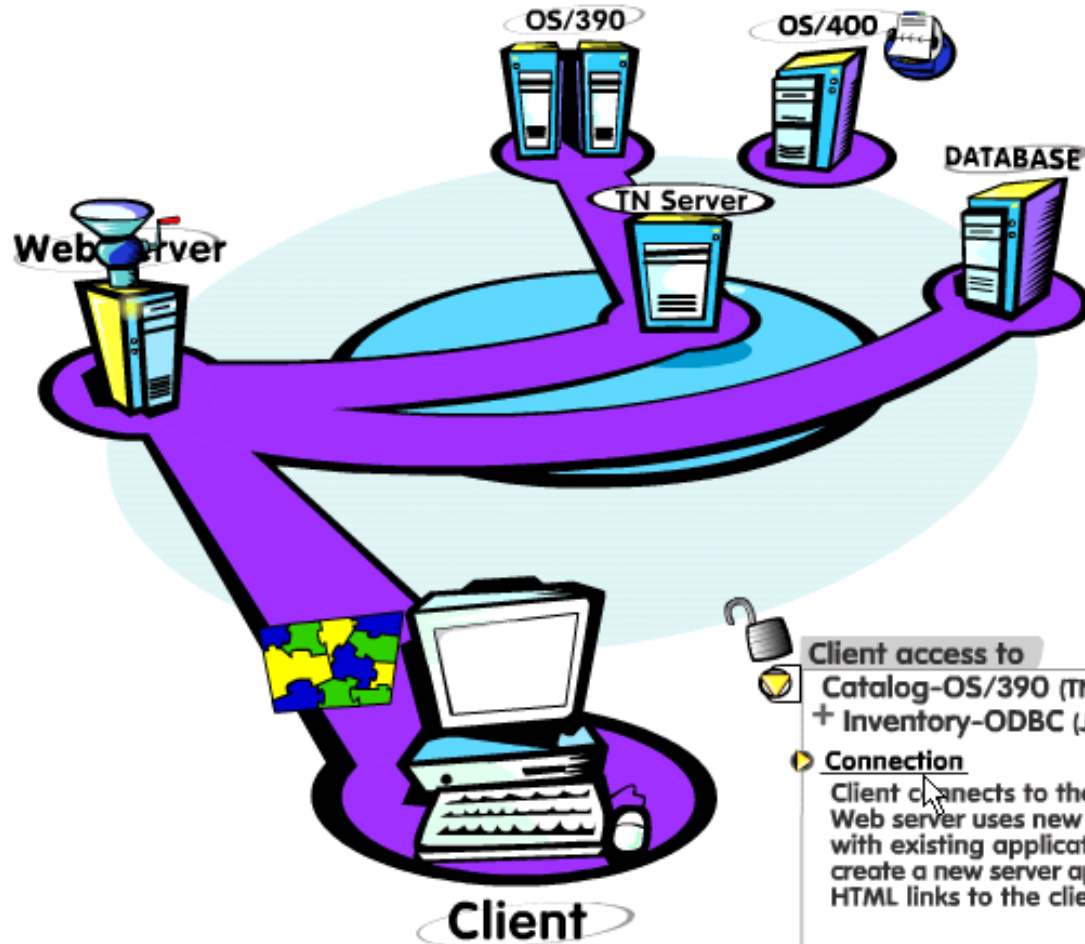




Combine multiple host applications into a single HTML Web page



WebSphere Host Publisher



Client access to

- Catalog-OS/390 (TN3270)
- + Inventory-ODBC (JDBC)

Connection

Client connects to the web server. Web server uses new business logic with existing application data to create a new server application with HTML links to the client.

[Back to menu options](#)



WebSphere Host Publisher

Host Publisher Studio

- ▶ simple interface
- ▶ creates Host Integration Objects



Wizard to create JSPs for rapid HTML views of host info



Host Publisher Server

- ▶ Run-time for Integration Objects
- ▶ A WebSphere Application!





Host Integration Objects

The screenshot shows the IBM SecureWay Host Publisher - Host Access interface. The left pane displays a tree view of macros and connection pools under the 'Osukw' folder. The right pane shows a 'Recording Loop - Extract Data' configuration window with a 'Table name' field set to 'title'. Below this is a terminal window displaying search results for 'K-KAYAK' from the 'OSU Library Catalog Keyword Index'.

Macros | **Connection Pools**

- Osukw
 - osupool
 - 139.78.100.9
 - Connect Macro
 - Screen2.1
 - pete[enter]
 - Screen3.1
 - Screen3.1
 - [enter]
 - Screen4.1
 - Screen4.1
 - opac[enter]
 - Screen5.1
 - Screen5.1
 - Data Macro
 - DataScreen1.1
 - k
 - keyword
 - [enter]
 - DataScreen1.2
 - DataScreen1.2
 - DataScreen1.3
 - Disconnect Macro
 - Global Screens

Recording Loop - Extract Data

Enter a name for this extraction
Table name

< Back Next > Help

```
Search Request: K-KAYAK
Search Results: 13 Entries Found
OSU Library Catalog
Keyword Index

-----
DATE      TITLE:
-----
1 1997    To Timbuktu
2 1991    Contributions to kayak studies
3 1991    Misty Fjords Monument/Wilderness, Is <map>
4 1989    Cross Admicalty canoe/kayak routes : <map>
5 1987    Fundamentals of kayak navigation
6 1987    A kayak full of ghosts : Eskimo tales
7 1987    Stikine River canoe/kayak routes <map>
8 1986    Cross Admicalty canoe/kayak routes <map>
9 1986    Kayak cookery : a handbook of provisions a
10 1986   Kayak : the animated manual of intermediate
11 1970   The meaning glory : another thing that wil
12 1969   In defiance of the rains
13 1969   Wandering where you see

-----
AUTHOR:
-----
Jenkins, Mack
United States
United States
Buech, David
William, Lawrence
United States
United States
Daniel, Linda
Wealy, William
Ely, Robert
Preece, Kathleen
Peterson, Robert

-----
START over      Type number to display record
HELP           Choose
OTHER options

NEXT COMMAND: _
24/016
```





WebSphere Host Publisher

- WebSphere Host Publisher Wizards creates Host Integration Objects
- Integration Objects are JavaBeans
- Integration Objects contain the knowledge of an existing Host Application:
 - ▶ Host Access
 - ▶ Navigation
 - ▶ Data Extraction
 - ▶ Session Management
- Integration Objects are portable JavaBeans - easy integration into other applications





Get to Web Fast and Preserve Legacy Assets

Date: 11/20/99 Time: 12:09:21

Dup No. 02 000251308 SHANGLER RAY C & SUSAN L/H&M RIDGEWOOD CREEK
 Parcel UNIT 1 LOT 16
 Stat A Cls 510 Mtg 3604 CHIMNEY HILL CT BR457 P61 VLACD DITCH
 By/SI 4/16/96 355 VALPARAISO TN46383
 Drain 30 Conv 2 BK/ty 000 000 Inst # Tx Sale N BANKRUPT
 Property Address --> NO ADDRESS FOUND Pre.Dupl. 278560

	Land-Res	Impr-Res	Land N-R	Impr.N-R	Exempt	Net Value	C. of E.#
96	3430	20230	0	0	3000	20660	0
97	0	0	3430	20230	0	23660	0
98	0	0	3430	20230	0	23660	0
99	0	0	3430	20230	0	23660	0

Mtg Y N N N Hmstd Y N N N Age N N N N Disvet N N N N Solar N N N N
 Rehab N N N N Ww1 N N N N Blnd/dabl N N N N Tx Exmpt N N N N

	Tax Due	Tax Paid	Date	Penalty	Pen.Paid	Date	Date Appld
96 A	793.42	793.42	11/12/97	.00	.00	0/00/00	6/03 0/00
Y B	793.42	793.42	11/10/97	.00	.00	0/00/00	11/13 0/00
97 A	965.59	965.59	5/11/98	.00	.00	0/00/00	5/12 0/00
Y B	965.59	965.59	11/10/98	.00	.00	0/00/00	11/18 0/00
98 A	909.92	909.92	5/10/99	.00	.00	0/00/00	5/24 0/00
Y B	909.92	.00	0/0/00	.00	.00	0/00/00	0/00 0/00

F14-C0 F16-D1 F20-SU
 ENTER DUP NO F5-NAME F7-ADDR F9-NOTES F10-PADDR F11-BK/PG F12-RTN

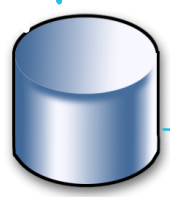
Porter County Tax Information

Dupl Number: 25 000036200

Owner Information	Property Address
ALICE	306 IROQUOIS TR BH
	CHESTERTON IN46304

Parcel	Book	Page	Legal Description
Class 510	000	000	INDIAN SPRINGS
Mtg 999			LOT 28
Buy/Sell 000000			
Drain			
Conv 9			

Tax History:							
	Land-Res	Impr-Res	Land N-R	Impr.N-R	Exempt	Net Value	C. of E.#
96	1870	9370	0	0	3000	8240	0
97	1870	9370	0	0	3000	8240	0
98	1870	9370	0	0	3000	8240	0
99	1870	9370	0	0	4000	7240	0



Wholesale Sports Order application

Wholesale SPORTS

Apparel - Men

Quantity	Description	Unit Price	Total Price
0	Apparel - Men		
0	Apparel - Golf		
0	Running		
0	Basketball		
0	Apparel - Women		
4	Ball		
0	Footwear		
0	20.00	0.00	20.00
0	20.00	0.00	20.00
0	20.00	0.00	20.00

Enter quantity to order Total cost: \$140.00





Host

Applications

```

Dup No. 196 01 11/05/99 SHINGLER RAY C & SUSAN L/H&W RIDGEWOOD CREEK
Parcel UNIT 1 LOT 16
Stat A Cls 510 Mtg 3604 CHIMNEY HILL CT DR467 P61 VLACD DITCH
By/SI 4/1 Date: 11/05/99 Time: 12:09:21
Drain 30 Dup No. 02 000251303 SHINGLER RAY C & SUSAN L/H&W RIDGEWOOD CREEK
Property A Parcel UNIT 1 LOT 16
Stat A Cls 510 Mtg 3604 CHIMNEY HILL CT DR467 P61 VLACD DITCH
Land-By/SI 4/16/96 355 VALPARAISO IN46383
3 Drain 30 Conv 2 BK/Pg 000 000 Inst # Tx Sale N BANKRUPT
Property Address -- NO ADDRESS FOUND Date: 11/05/99 Time: 12:09:21
96 Dup No. 02 000251303 SHINGLER RAY C & SUSAN L/H&W RIDGEWOOD CREEK
97 Parcel UNIT 1 LOT 16
98 Stat A Cls 510 Mtg 3604 CHIMNEY HILL CT DR467 P61 VLACD DITCH
99 By/SI 4/16/96 355 VALPARAISO IN46383
Mtg Y N 96 3430 Land-Res Impr-Res Land N-R Impr.N-R Exempt Net Value C.of E.#
Rehab N N 97 0 Tax Due 96 793.42 793.2 5/12/97 .00 .00 0/00/00 5/03 0/00
98 A 996 A 793.42 97 0 3430 20230 0 23660 0
99 Y B 9 Y B 793.42 98 0 3430 20230 0 23660 0
Y B 97 A 965.58 99 0 3430 20230 0 23660 0
ENTER DUP NO Y B 96 A 965.58 99 0 3430 20230 0 23660 0
Mtg Y N N N Hmstd Y N N N Age N N N N DisVet N N N N Solar N N N N
98 A 909.92 Rehab N N N N WU1 N N N N Blnd/dsabl N N N N Tx Exempt N N N N
Y B 909.92 Tax Due Tax Paid Date Penalty Pen.Paid Date Date Appld
ENTER DUP NO 96 A 793.42 793.2 5/12/97 .00 .00 0/00/00 5/03 0/00
97 A 965.58 965.9 5/11/98 .00 .00 0/00/00 5/12 0/00
98 A 965.58 965.9 11/10/98 .00 .00 0/00/00 11/18 0/00
99 Y B 909.92 909.2 5/10/99 .00 .00 0/00/00 5/24 0/00
Y B 909.92 .0 0/00/00 .00 .00 0/00/00 0/00 0/00
F14-C0 F15-D1 F20-SU
ENTER DUP NO F5-NAME F7-ADDR F9-NOTES F10-PADDR F11-BK/PG F12-RTRN

```



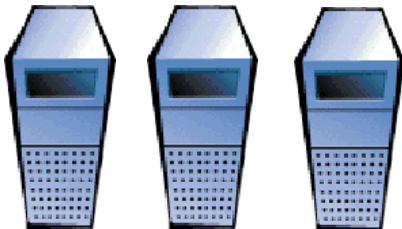
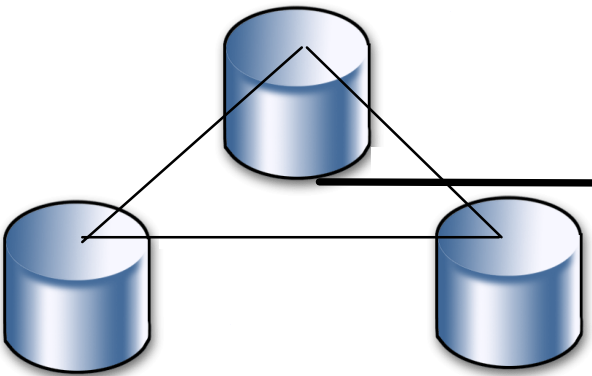
The Web

EJB

Applets

Applications

Servlets



WAS

Host Application Knowledge Repository





Host Integration Development

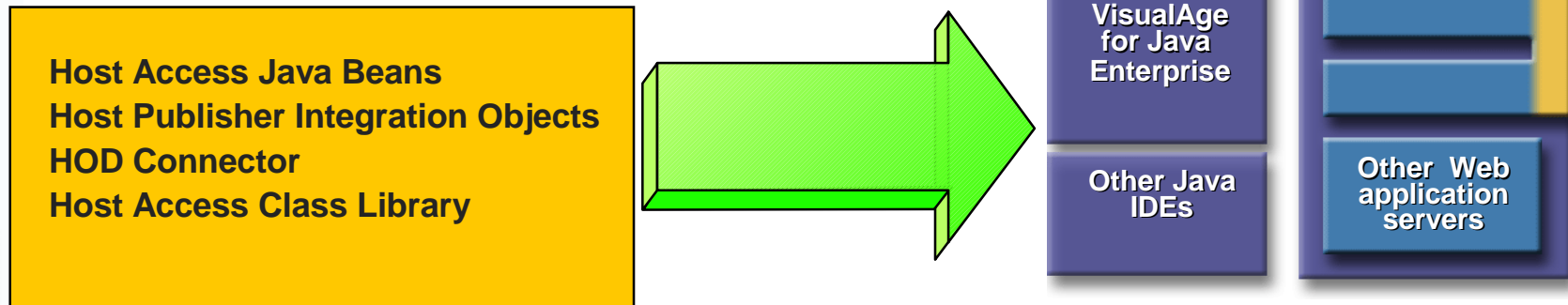
■ Options

- Host Access Beans for Java
 - Allows drop in emulation function and a simple interface to programming host interactions
- Host Access Class Library
 - Modern, object based API for host communication
- HOD Connector
 - Common Connector Framework compliant form of HACL technology
- Host Publisher
 - Accelerate integration of host applications by capturing host application information in a Java Bean for easy integration into WebSphere/VAJ development projects



Extensive e-business Application Support

Host Integration Application
Development Tools



- ISVs, SIs, and corporate developers can quickly respond to business pressures and capitalize on new market opportunities
 - ✓ Modernize legacy applications
 - ✓ Extend desktop applications with host connectivity
 - ✓ Write host access applications once and use across network environments
- Host Access Beans are key to IBM connector strategy
- Host Publisher leverages and integrates with WebSphere strategy
- Both client and server application models are supported



e-business



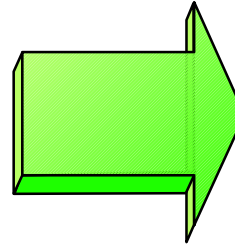
What are the Products and Solution Offerings?

IBM



One Stop Shopping for Emulation

Host On-Demand V5.0
Personal Communications V5.0
Personal Communications OS/2 V4.3
Screen Customizer V2.0



IBM Host Access
Client
Package 1.0

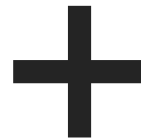
- **Only complete emulation and screen rejuvenation solution in the market**
- **Offers convenience to migrate to Web at own pace**
- **Unlimited use of Screen Customizer Studio**
- **Registered user pricing**
- **Current Personal Communications/Host On-Demand Bundle subscriptions will automatically get new content for no charge**
- **Host Access Client Package v1.1, GA's 3/28/01. Refresh with maintenance code and other features**





WebSphere Host Integration Solution Offering v2.0

Host On-Demand
Personal Communications
Screen Customizer



Host Publisher

Communications Server

WebSphere Application Server
Advanced Edition

WebSphere Studio Professional Edition

- Provides clear migration path as customers grow their e-business
- Simplifies creation and deployment of advanced e-business applications
- Leverages features of WebSphere software platform to enable customers to respond quickly to new market needs



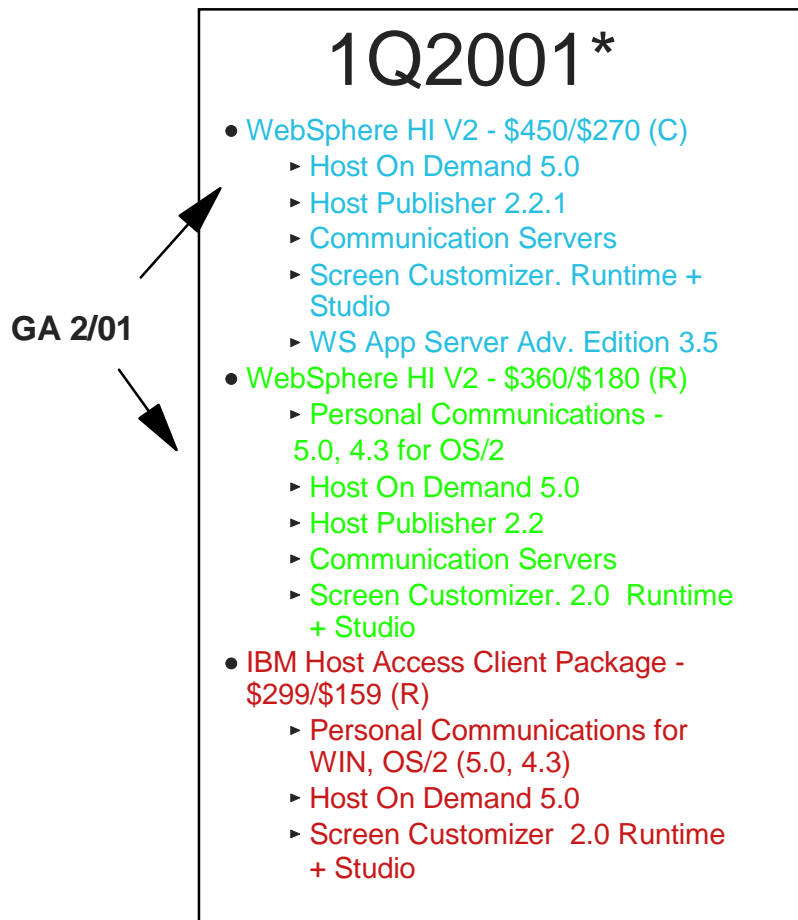
What's New with WebSphere Host Integration

	2000 Enhancements	Date Available
Host Integration Solution Offering 2.0	<ul style="list-style-type: none">• WebSphere Application Server Advanced Edition V3.5• WebSphere Studio Professional Edition• IBM Screen Customizer V2.0 - runtime and Studio	1Q2001
Host Access Client Package 1.0	<ul style="list-style-type: none">• WebSphere Host On-Demand V5.0• IBM Personal Communications V5.0, and V4.3 for OS/2• IBM Screen Customizer V2.0 - runtime and Studio	Available Now
Host Access Client Package 1.1	<ul style="list-style-type: none">• WebSphere Host On-Demand V5.03: FTP client; extended VT• IBM Personal Communications V5.01, and V4.3 for OS/2• IBM Screen Customizer V2.03 - runtime and Studio	1Q2001





How You Sell Host Integration Client Solutions



(R) - SRP registered pricing for new user/trade-up
(C) - SRP concurrent pricing for new user/trade-up

Notes:

• Firewall will not be included in Version 2 of Host Integration Solution Offering.

*HOD V5 and Screen Customizer V2 will not be announced as standalone products. Will announce withdrawal of Personal Communications V5.0, HOD V4.0, and Screen Customizer V1.0 standalone products January 2001. ***US Dollars shown for Comparison***





Sample Host Integration Questions

Qualifying Questions for...

Marketing/Sales VPs, Product and Customer Service Managers:

- ▶ Have you considered expanding your business using the capabilities of the Web?
- ▶ Are you concerned that a competitor may gain a competitive advantage by expanding their business to the web before you can?
- ▶ Do your employees have easy access to the information they need to make decisions?
- ▶ Are your customers satisfied with the level of service you're delivering?
 - ▶ Are you having difficulty retaining customers?
- ▶ Has recent merger or acquisition severely impacted your company's operations?

Qualifying Questions for...

I/T VPs, Directors and Managers:

- ▶ Are you looking for ways to extend your applications to...
 - Your customer ?
 - Citizens?
 - Your Business Partners ?
- ▶ What is your plan for moving information and functions to the Web? What is your timetable and budget?
- ▶ Do you have to support mobile employees and are there applications/data that they need but can't access currently or productively?
- ▶ Is it expensive for you to provide SW maintenance on your end users' emulators?
- ▶ Would you like to reduce training and help line costs by streamlining and modernizing existing applications?
- ▶ Do you have to support multiple vendors' emulators, communications servers and multiple network types?

Qualifying Questions for...

CFOs, Financial VPs:

- ▶ Would you like to extend the reach of your information to the Internet with a minimum of time and cost?
- ▶ Would you like to better manage your desktop software, networking, training and help desk costs?
- ▶ Would you like to improve clerical productivity by making employee-driven applications into self-service applications?





e-business



What are the Solution Benefits?

IBM



e-business

Solution Benefits

- **Enable customers to start simple and grow their e-business fast, leveraging host data with new web applications to maximize ROI**
 - ▶ Host On-Demand, Screen Customizer, and Host Publisher require no changes to existing applications and no additional programming
 - ▶ The WebSphere Host Integration Solution is integrated into the WebSphere Software platform, a comprehensive set of award winning solutions that enable you to quickly adapt to new market demands
 - ▶ Integrates and works with WebSphere Transcoding Publisher to deliver host data to any pervasive device





Solution Benefits

- **Provide everything customers need to create and deploy host access e-business solutions, in a single offering**
 - ▶ The solution now includes both WS Application Server Advanced Edition and WS Studio Professional edition, which can be used with any of the Host Integration programming technologies (Java beans, Host Access Class Libraries, IBM Connectors) to integrate host access with new business logic.
 - ▶ You can deliver dynamic host content using Java servlets, JavaServer Pages, XML technology, and Enterprise JavaBeans components.
 - ▶ The new Screen Customizer API enables you to enhance host applications with new business logic. The new Screen Customizer Java beans enable you to provide custom host access from e-business applications.
 - ▶ Host Publisher XML Gateway extends host applications and data to customer applications





Solution Benefits

- **Offer industry leading host access solutions with unmatched flexibility for any environment**
 - ▶ Supports Java, HTML, and XML formats for delivery of host data from multiple sources, such as OS/390, OS/400, VT and databases.
 - ▶ Now includes both the Screen Customer runtime and Screen Customer Studio in both the Host Integration Solution offering and Host Access Client package.
 - ▶ The Host Access Client Package enables customers to easily move from Personal Communications to Host On-Demand without having to make a separate purchase.
 - ▶ With HOD V5.0, customers have the ability to choose the specific Host On-Demand features to deploy to particular users.





e-business



Customer Success Stories

IBM



Customer Success Story

- **Name: Blue Cross/Blue Shield - NJ**
 - ▶ Industry: Insurance
 - ▶ Pain: How to provide access to member hospitals without the growing cost of rented SNA Lines
 - ▶ Solution: Delivered Host On-Demand - Green screen emulator to member hospitals, a great ROI and only needed browsers and a few dollars a month for internet access.





Customer Success Story

- **Name:** Hawaii State Judiciary

- ▶ **Industry:** Government
- ▶ **Pain:** Legal documents needed for the judicial family court system, currently their staff onsite was having difficulty managing the requirements. Would need to staff up administration to continue with demand. Had to go on site with limited business hours to get information, copy, etc.
- ▶ **Solution:** Host On-Demand provided a quick easy secure solution, allowing 300-500 visits a day, making the records available 24/7





Customer Success Story

- **Name: Superior Essex - USA**
 - ▶ Industry: Wire and Cable Manufacturer with factories in- Mexico
 - ▶ Pain: Needed to distribute information between the two country's with english and spanish languages were spoken to the manufacturing plant and the solution needed to include bilingual user interfaces to deliver a solution to operate in a new e-Business Web environment.
 - ▶ Solution: Used Host Publisher with the OS/390 CICS applications, leveraged existing information on their mainframe, using XML files and JavaBeans to deliver the HTML solution to the Web browsers.





Customer Success Story

- **Name: Honeywell - USA - Aircraft Landing Systems**
 - ▶ Industry: Manufacturing - Aircraft
 - ▶ Pain: Legacy data - how to build integrated solutions that rapidly extend this information to the Web. They wanted to put an architecture in place that would enable us to wrap legacy business data and rules, then use that layer as they migrated their own customized applications to the Web.
 - ▶ Solution: By using Visual Age for Java in combination with technologies such as WebSphere App.Server, WebSphere Host On-Demand, and MQSeries, IBM delivered the flexibility in software development and management to meet the business objectives on any platform and still have access to legacy business rules and data





Additional Host Integration References

References	Geography	Industry	Product/ Solution	Published Reference
Sherwin Williams Argentina	Latin America	Chemicals and Petroleum	Host On- Demand	05/05/00
BrightPod	North America	Bus Partner	WebSphere Transcodin g Publisher	10/20/00
Banco del Gattardo	EMEA	Retail Banking	PCOMM	01/04/00
Sumitomo Trust and Banking	Asia Pacific	Retail Banking	Host Publisher	03/29/00
Sterling Corporation	North America	Wholesale Distribution & Services	Host On- Demand	10/27/00
Deutscher Ring	EMEA	Insurance	Host On- Demand/ Screen Customizer	11/17/00





Next Steps

- What should a partner do to build a host integration practice...
 - commit technical staff to education / certification path
 - commit sales staff to sales training
 - build business plan with channel rep / BPSM
 - commit to having a technical support infrastructure
 - commit to a process for managing leads
 - commit to a measurement system





Key Services

■ Proof of Concept

- Demonstrate Web-to-host capabilities of any IBM client application within 5 days

■ Prototyping

- Develop application prototypes or demo code

■ Custom Engagements

- Solution Analysis
- Full Implementation Services

■ Business Partner Consulting

- Assist in building a successful Host Integration services practice
- 80+ firms

■ CS/390 Based and Custom Support Services

- CS/390 design and implementation
- Migration planning for customers moving to e-business





Marketing and Support

- **CoMarketing**
 - Seminar in a Box
 - Co-funded Seminars
 - e-seminars
- **Sales Enablement/Support**
 - Solution Selling Resource CD
 - HI Executive Assessment
 - Monthly "What's Hot in HI" Conf Call
- **Technical Support**
 - Pre-sale Support - PartnerLine
 - Post-sale Support -SupportLine





e-business

Enablement

- **Education: IBM Learning Services**
 - Web-to-Host E4480 (HOD,SC and HPub)
 - Host On-Demand and Screen Customizer Workshop (Future)
 - Host Publisher Workshop (Future)
- **Distance Learning - Web Based Training**
 - Host Publisher Tutorial
 - www-4.ibm.com/software/network/hostpublisher/education/webbook/
 - HOD/SC Tutorial
- **Education: One on Many Mentoring (Raleigh)**
 - Host Publisher Advanced Topics Workshop
 - Screen Customizer Advanced Topics Workshop
- **Certification**
 - HOD/SC Certified Specialist (available YPWP for E4480 class)
 - Host Publisher Certified Specialist
 - Host Integration Certified Solution Specialist



IBM



Additional Resources

- [SW Partner Program](#)
 - www.ibm.com/software/partnerweb
 - www.ibm.com/partnerworld
- [Partnerinfo](#)
 - partnerinfo.software.ibm.com
 - User ID and Password required
- [Host Integration](#)
 - www.ibm.com/software/network/hostintegration
- [IBM On-line Technical Support](#)
 - www.ibm.com/support
- [Not For Resale \(NFR\) code](#)
 - www.bpops.com
 - User ID and Password Required
- [Host Integration Preview Kit - GK2T-2047](#)
 - Product Specification Sheets and Demo CD





Summary

- You can help solve pressing business problems with the IBM WebSphere Host Integration solution
 - ▶ Quickly, practically, affordably
 - ▶ With flexibility for the future
- You can leverage existing investments in current applications and data
- WebSphere Host Integration is an excellent entry strategy to move customers to e-business now
- For more information on IBM WebSphere Host Integration, visit the following website:
 - ▶ <http://www.ibm.com/software/webservers/hostintegration>
 - ▶ <http://www.ibm.com/software/webservers/>
 - ▶ <http://websphere.dfw.ibm.com/whidemo/>





Resources for additional Information

- <http://www.ibm.com/software/webservers/hostintegration/>
(Product/solution information - WebSphere Host Integration Solution and WebSphere Software Platform)
- <http://www.ibm.com/software/webservers/>
(WebSphere Solutions)
- <http://websphere.dfw.ibm.com/whidemo/>
(Host Integration demo)
- <http://w3.software.ibm.com/sales/aim/prod/hostintegration/competition/>
(Current competitive information)
- <http://w3.software.ibm.com/sales/aim/prod/hostintegration/prodinfo/>
(WebSphere Host Integration Solutions)
- <http://w3.software.ibm.com/sales/swgssr/ssr/index2.html>
(Solution selling Web site)
- <http://w3.ncs.ibm.com/crmd.nsf/home?ReadForm>
(Customer Reference Web Site)
- www.ibm.com/webservers/hostondemand/library/publications/hacl.html
(Host Access Class Library for Java online reference)
- www.ibm.com/webservers/technology/hacl
(Host Access Class Library website)





e-business

Back-up



IBM



e-business



Key Competitors and Competitive Advantages

IBM



Personal Communications Competitive Advantages

▶ Key Competitor - Attachmate Extra Personal Client 6.5

- Less complete Java implementation
- No SSL for TN connections
- No SLP support
- Usability - more difficult file transfer and customization tools

▶ Personal Communications Advantages

- Extensive protocol support including APPN, APPC, SNA, TCP/IP, and ISDN
- Same look and feel across multiple operating systems
- Based on open systems architecture for industry standard solutions
- Most comprehensive set of programming APIs including EHLLAPI, SNA, HACL, Java Beans, ActiveX, and ODBC / DRDA
- Integration with Host Integration products, including Screen Customizer and Communications Server



Host On-Demand Competitive Advantages

▶ Key Competitor - WRQ Reflection for Web 4.0

- Java applet size are comparable to HOD
- Supports 3270, 5250, VT220 and HP emulation
- 3270, 5250, VT print capabilities
- Support for SSL is available but additional product (Security Proxy Server) needed

▶ Host On-Demand Advantages

- Broadest range of platforms in industry
- Broadest programming support, (HACL, Ehllapi)
- TN3270, TN5250, and VT support
- Based on open industry standards
- Provides default GUI and ability to create custom GUI, with no programming using Screen Customizer
- Provides ability to run custom and default GUI in the same application using Screen Customizer





Screen Customizer Competitive Advantages

▶ Key Competitor - Seagull

- Based on proprietary standards
- No printing capabilities
- No VT Capabilities
- Strengths: Supports "tabs" and other usability features
- Multiple products for multiple platform (WinJA or 5390, JWalk for AS/400)

▶ Screen Customizer Advantages

- IBM's Screen Customizer is a GUI rejuvenation tool that allows for non-programmatic customization of traditional host access user interfaces
- Screen Customizer's key competitive advantages are:
- Simple rejuvenation of host screens using drag and drop technology, no programming is required
- Uses Host Access Class Libraries (HACL) and Open Host Integration Objects (OHIO)
- Works with both Host On-Demand (thin client) and Personal Communications (thick client) emulators and CA/400





e-business

Host Publisher Competitive Advantages

▶ Key Competitor - Jacada Connects

- No TN SSL on connections to data source
- Dedicated server-host session for each browser user
- Uses proprietary connectors to grab host screens - Host Publisher uses HACL
- No Green Screen Capabilities
- Not able to do VT or JDBC

- Provides an open Java or COM API

▶ Host Publisher Advantages

- Support for largest number of platforms and Web servers
- Speed and ease of development without a prerequisite IDE
- Standards based Java Host Integration objects and Database Integration objects
- Does not require dedicated host session per user
- SuperConnector for WebSphere e-business applications - common technological foundation with other IBM Web-to-host products



IBM



WebSphere Transcoding Publisher Competitive Advantage

■ Key Competitors

- ▶ Oracle - Portal to Go
- ▶ AvantGo - Enterprise Online
- ▶ Aether Software - ScoutWeb

■ WTP Strengths

- ▶ WTP is the only general transform solution available today -- the competition focuses on advantaging their core business rather than attacking the content transformation space directly
- ▶ Offers plug-and-play capabilities
- ▶ Provides the widest breadth of features including specific device and content transforms and integration into larger IBM solutions
- ▶ Easy to customize specific transforms using the developers toolkit
- ▶ Delivers better, easier to use administration and developers tools
- ▶ Includes flexible configuration options for network efficiencies and ease-of-integration
- ▶ Open, flexible and standards-based framework which makes WTP easily extensible





Communications Server Competitive Advantages

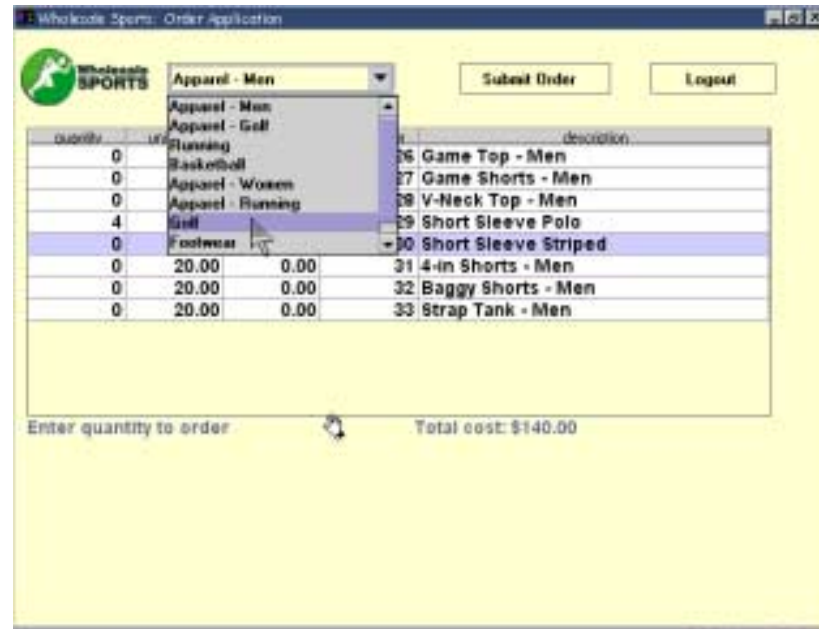
- ▶ **Host Publisher**
 - **Web-to-Host Publishing (HP comes with CS/NT only)**
- ▶ **Powerful SNA Gateway**
 - **Most competitive SNA implementation and best performance**
 - **APPN, High-Performance Routing and DLUR**
- ▶ **Premier multi-protocol support**
 - **Full range of network integration capability**
- ▶ **Robust network security**
 - **SSL encryption (up to Triple DES, and client/server authentication)**
- ▶ Supports Web browsers, Lotus Notes and the Internet access over SNA
- ▶ Support for legacy applications and LAN applications on an TCP/IP network
- ▶ Single vendor for total networking solutions across OS/2, AIX,
- ▶ Windows NT, Windows 2000, and OS/390
- ▶ Proven reliability and performance in large-scale enterprise environments



Host Integration Application Development

Integration with WebSphere

AS/400
S/390
UNIX



Wholesale Sports: Order Application

Wholesale SPORTS

Apparel - Men

Submit Order Logout

Quantity	Unit	Description
0		Apparel - Men
0		Apparel - Golf
0		Running
0		Basketball
0		Apparel - Women
0		Apparel - Running
4		Golf
0		Footwear
0	20.00	0.00
0	20.00	0.00
0	20.00	0.00

Quantity	Unit	Description
26		Game Top - Men
27		Game Shorts - Men
28		V-Neck Top - Men
29		Short Sleeve Polo
30		Short Sleeve Striped
31		4-in Shorts - Men
32		Baggy Shorts - Men
33		Strap Tank - Men

Enter quantity to order Total cost: \$140.00



Host Integration Development

■ Options

- Host Access Beans for Java
 - Allows drop in emulation function and simple interface to programming host interactions
- Host Access Class Library
 - Modern, object based API for host communication
- HOD Connector
 - Common Connector Framework compliant form of HACL technology
- Host Publisher
 - Accelerate integration of host applications by capturing host application information in a Java Bean for easy integration into WebSphere/VAJ development projects





Common Host Access APIs

■ API's

- Provide common Java programming interface across emulator products
 - Host Access Class Library for Java
 - Host Access Beans for Java
- Easily transfer skill base from one product to the other
- Reuse Java applications written for one product on the other





IBM Host Access Beans for Java

Host On-Demand moves beyond terminal emulation...with Host Access Beans

- Rapidly create and deploy new host access applications to meet your specific business needs
 - Open architecture allows for flexible/portable deployment using any TN server
- Lower your cost of development
 - Allows drop in emulation function and simple interface to programming host interactions





e-business

Product Detail



IBM



Personal Communications V4.3 for OS/2: What's New

OS/2 - Exploitation

Enhancement	Benefit
Host AccessBeans for Java and the Java Interface for Host Access Class Library (HACL)	HACL gives you the ability to deploy custom applications across Personal Communications for OS/2 and Windows versions and WebSphere Host On-Demand.
Support for SSL V3	Additional Security for the client
Euro 2 Symbol Set	Available in 22 languages, it includes double-byte character set (DBCS) languages. DBCS supports the Euro sign, and includes extensive keyboard and code-page support.



Personal Communications V5 - Windows Platforms: What's New

Install Enhancements

Enhancement	Benefit
Update Install Manager	Easier, smoother installs
Upgrade to Installshield 5.5	Compliance with new Microsoft enhancements
Install New Software Registration Tool	Easy ability to register product and be eligible for support

Others

Enhancement	Benefit
Tivoli Certification	Works with network management
Client Certificate Authentication	Increased security
HACL and Java Beans Resynch	Improves compatibility with Host On-Demand and other Host Integration products



Host On-Demand V5.0 What's New

Productivity

Enhancement	Benefit
Componentization	Administrators can control download time of cached client
Express Logon	Eliminates need for users to enter ID and password when logging onto host system. Works with Communications Servers for AIX, OS/2, Windows NT and Windows 2000
Multiple Session Launch Support	Users can launch multiple sessions together, from multiple hosts, from a single icon

Deployment

Enhancement	Benefit
Smart Cache	Requires no idle time from Host On-Demand users
Deployment Wizard	Simplifies configuration of HOD sessions
Policy Management/Feature Disable	Administrators can control features available to users to reduce user error, helpdesk support and security issues

Host On-Demand V5.0 What's New

Emulation

Enhancement	Benefit
ENPTUI Support	Provides additional usability for 5250 sessions
Code Page Enhancements	Provides equivalent code page support to Personal Communications
Part of proposed TN5250E standard Uses AS/400 Host Print Transform Also supports Host Print Key - Ctrl-Pause	Host On-Demand client sends device ID and printer information AS/400 creates & sends ASCII datastream with printer controls

Security

Enhancement	Benefit
Native Authentication	Use system database User ID/password to logon to Host On-Demand
Host On-Demand Configuration Servlet	Can deploy Host On-Demand across extranet with no firewall restrictions
SSL V3 features currently implemented by HOD:-	SSL V3 data encryption TN server authentication - server sends X.509 certificate to client
Client Authentication	TN Server requests client certificate Host On-Demand client sends X.509 certificate to server



Screen Customizer V2.0 What's New

Usability/Productivity

Enhancement	Benefit
Global customization and simplified screen capture process	Reduces time required to develop custom GUIs Gives host applications same look and feel as corporate standard for the Web
AS/400 Subfile Support	Provides weblike appearance of AS/400 subfiles without any manual customization
Host On-Demand Integration	Provides users common function and usability as 'green screen' host applications
Web link button improvements	Gives look and feel of a true web application
Light pen support	Users can use mouse to access host applications that require light pen
Auto Install on AIX	New GUI reduces installation errors

Application Development

Enhancement	Benefit
Screen Customizer API	Can extend host applications with new business logic and data
Screen Customizer bean	Can quickly incorporate Screen Customizer functions in host access e-business applications





Host Publisher V2.2 What's New

Expanded Reach and Flexibility

Enhancement	Benefit
Remote Integration Object (RIO)	Extends power of Host Publisher to remote Java clients and servers
XML Legacy Gateway	Customer application access to 3270 and 5250 applications in XML format. Complements Integration Object XML support
3270/5250 HTML Mapper	Reach new users. Load-and-go access to 3270 and 5250 applications
Additional Platform Support	WHP Studio runs on WIN 2000 and WHP Server runs on WIN 2000
WebSphere Studio Professional Edition	Completes the Host Publisher implementation package with a leading edge HTML/JSP editor and new business logic creation tools
WebSphere Standard Edition	Supports V3.5, V3.02 and V2.0.3.1
New Simplified Licensing	Price based on concurrent/sessions and Host Publisher server platform

