



IBM IT Education Services

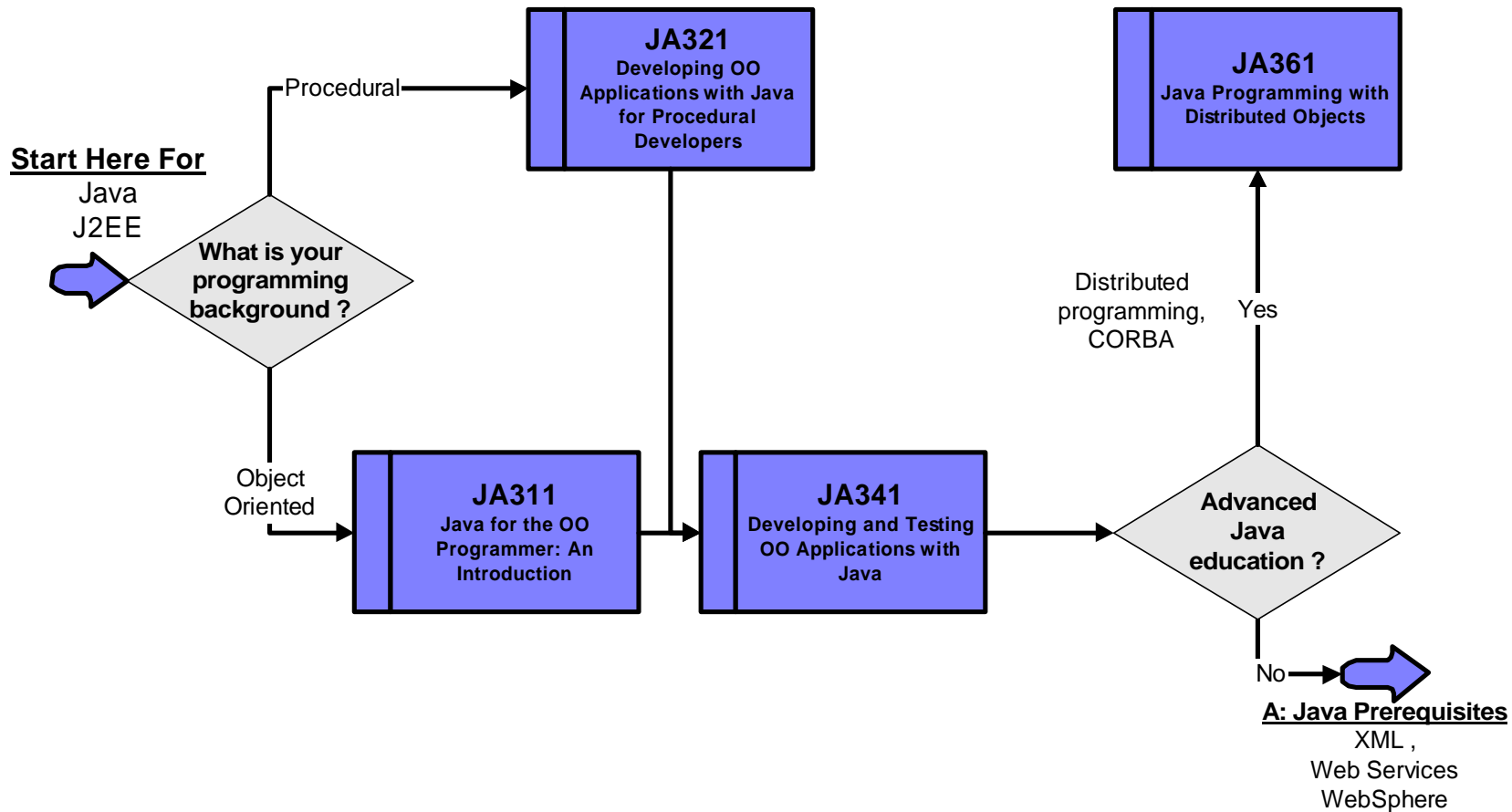
WebSphere Commerce Education

WebSphere Commerce 5.5 & Prerequisites
Training Paths

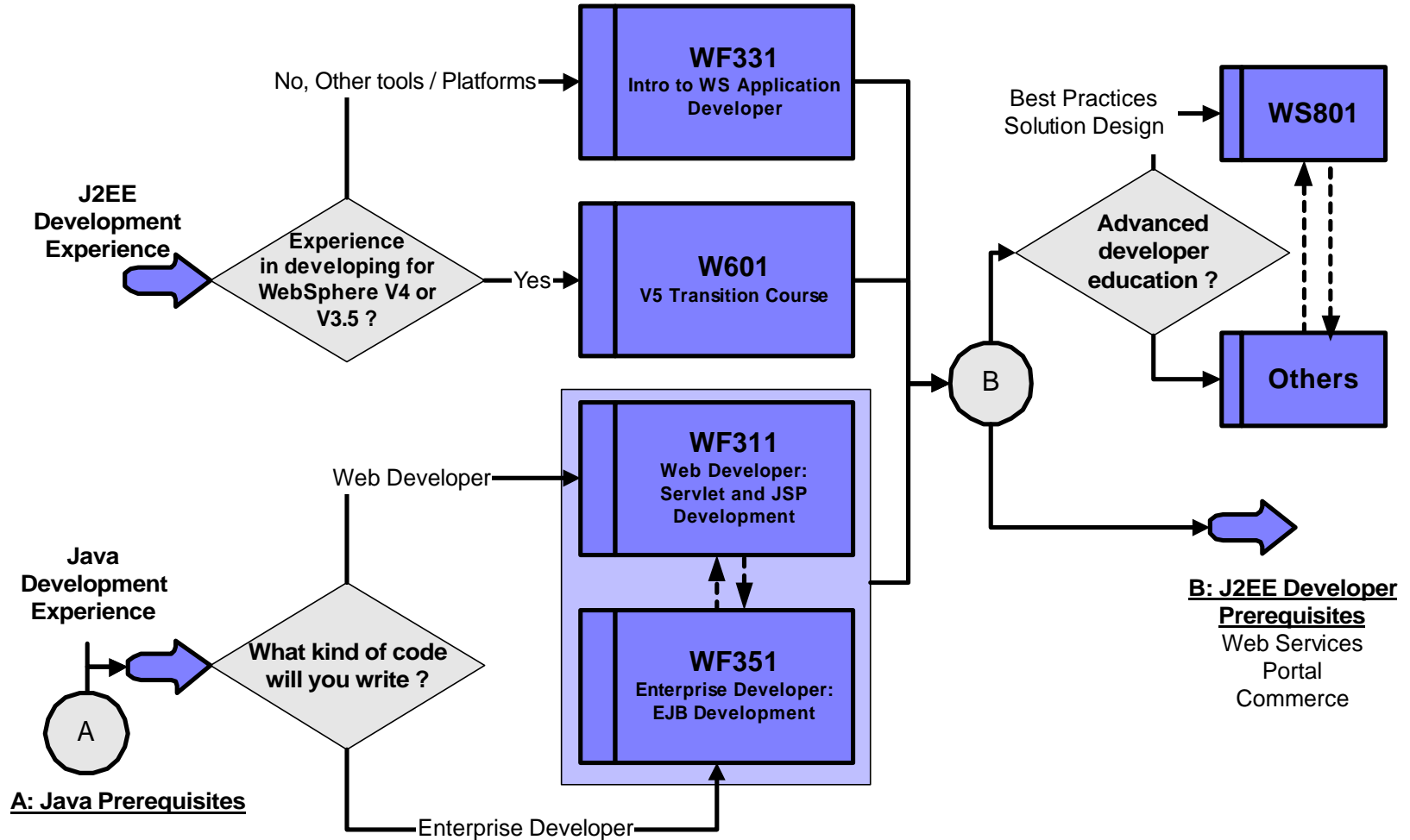
Dec 2003 | Information subject to change
Ashish Cowlagi (ashishc@us.ibm.com)

© 2003 IBM Corporation

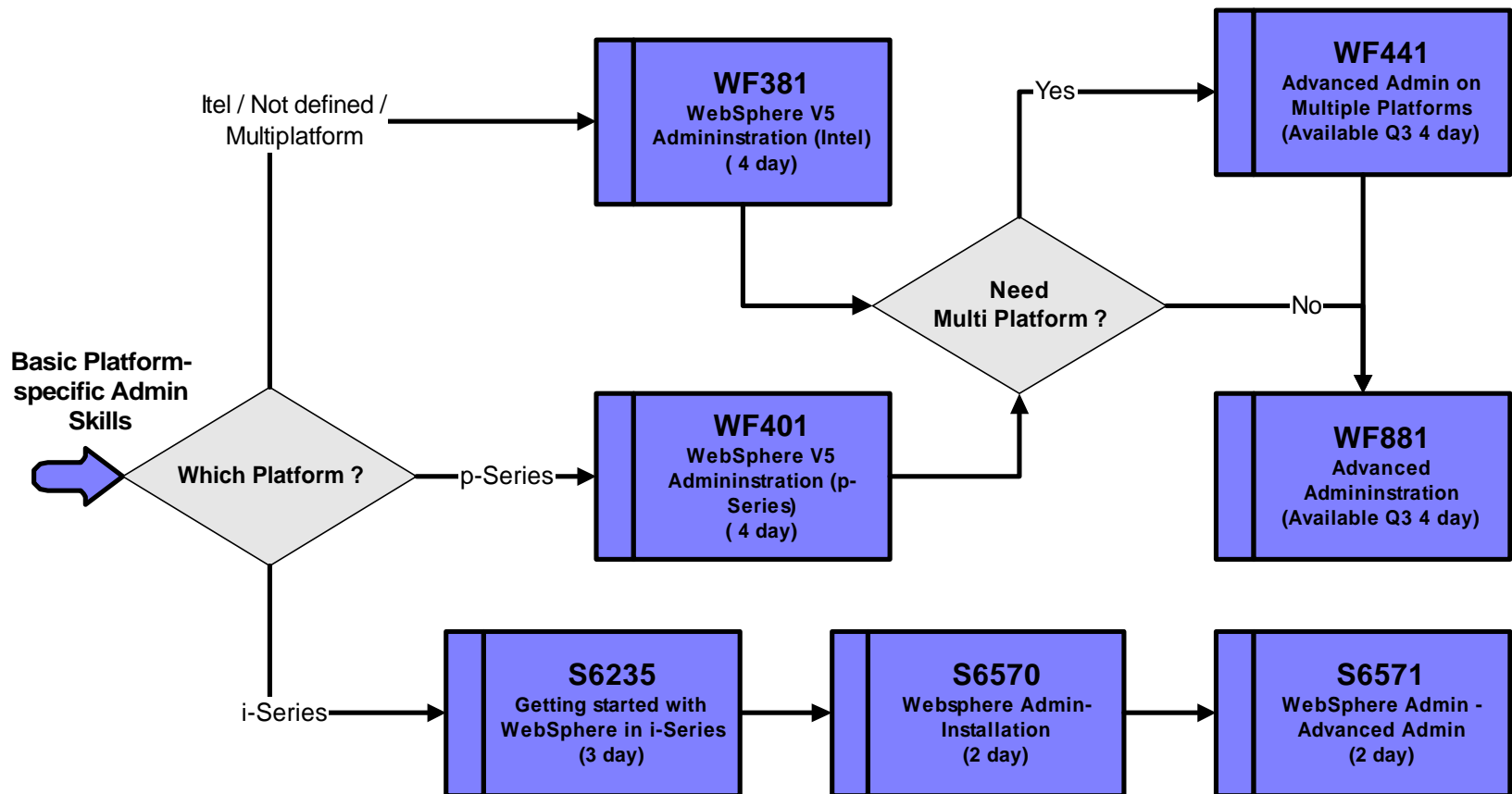
Java



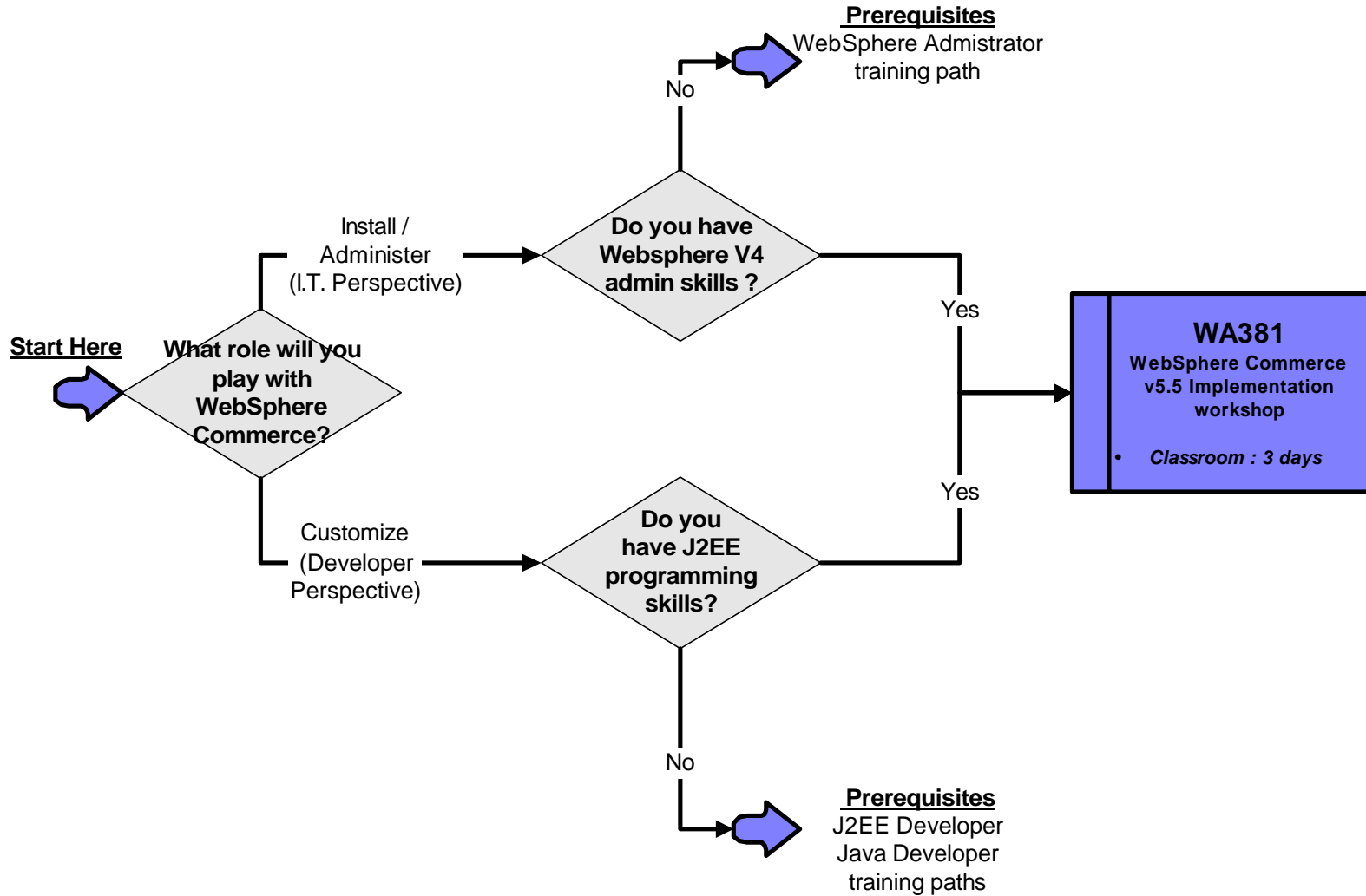
J2EE & WebSphere Development



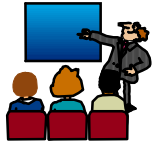
WebSphere Administration



WebSphere Commerce Server



Tiered Approach to Education



Tier 4: Classroom Training

- 1000+ Classrooms worldwide
- Most with a high concentration of technical Labs
- Experienced Instructors
- Gold Standard in Technical Education



Tier 3: IBM e-Tutorial

- Online, Self Paced courses
- Instructor guided. Access to instructor via instant messaging
- Flexible, 24/ 7 – take the classes on your own schedule !
- Up to 120 days to complete each course (varies by course)
- Hands on Labs on our e-Lab Servers
- Same Content as classroom with enhancements to suit the medium.



Tier 2: IBM Alliance CBT Library

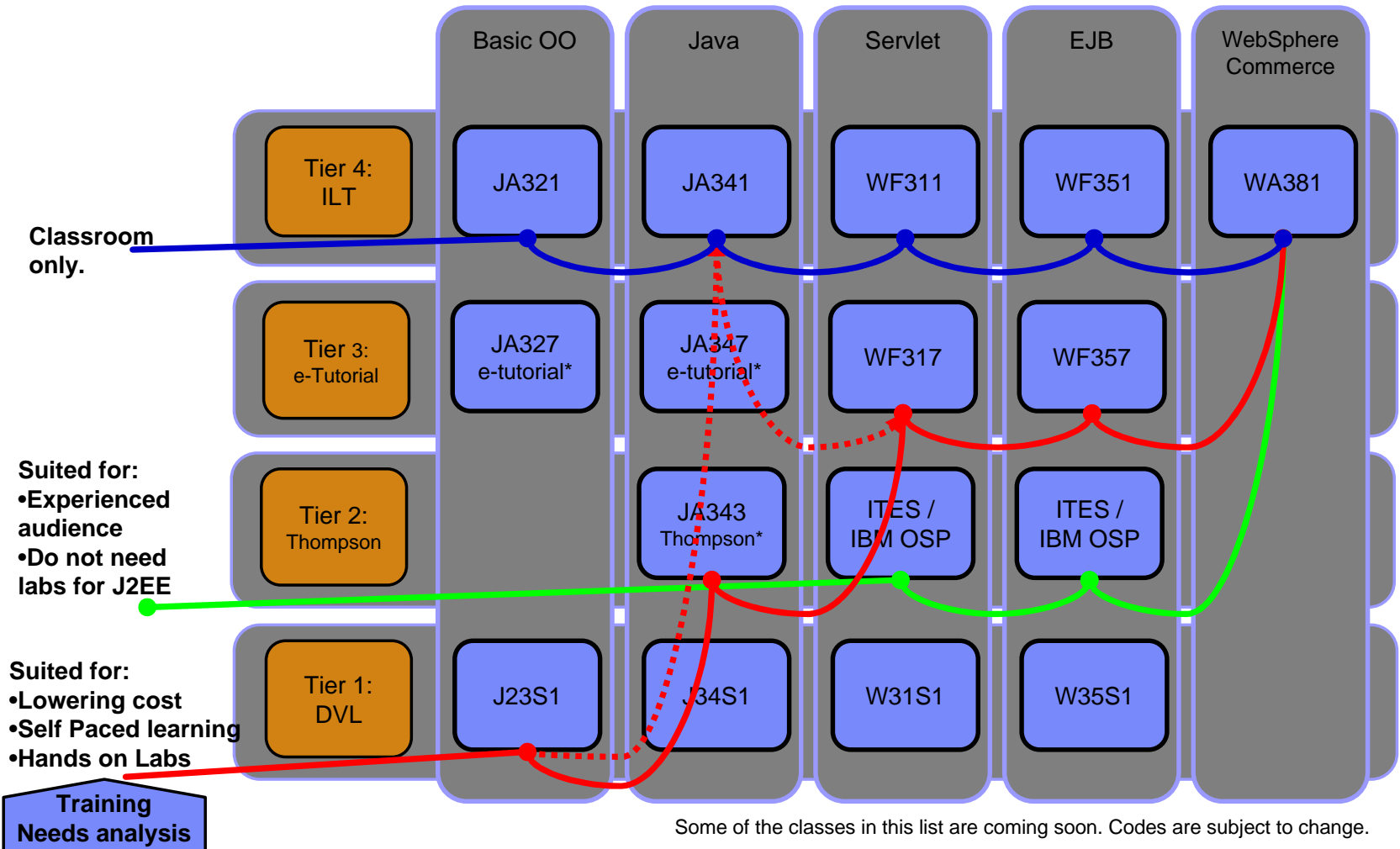
- Interactive Computer Based Education
- Comprehensive Library
- Delivered online or via CDs
- Includes Lab simulations



Tier 1: Digital Video Library

- Learn from high quality IBM instructors
- Delivered in easy to use CD ROM format that can be played on your desktop
- Instructor Lectures, captured on Video
- Student notes on CD

Sample Blend Roadmaps: Developers



Summary

- Courses can be tailored to meet your team's custom requirements!
 - Team sizes as small as 7 !
 - For more information about tailored education services, please visit us on the web at www.ibm.com/training/custom

- Blended Learning Offerings
 - Ideal solutions for managing an extended team transition
 - A blended solution can be custom-designed for your team
 - Please visit us at www.ibm.com/services/learning/us