



**Protect and enrich your
Lotus Notes and Lotus Domino
investments within a collaborative
platform to drive productivity.**

Contents

2	Introduction
3	Plan strategically to get the most from your Lotus software solutions
4	<i>Do more with less to reduce total cost of ownership</i>
4	<i>Start using production-ready software sooner with a shorter release cycle</i>
5	<i>Achieve increased user productivity through messaging clients infused with collaboration</i>
8	<i>Lower total cost of ownership with a comprehensive Linux portfolio</i>
9	<i>Improve performance through server enhancements</i>
11	Roadmap to efficient application development
12	<i>Get continued support for the standard rapid application-development tool</i>
12	<i>Explore new and existing Lotus Notes and Lotus Domino applications</i>
13	<i>Expand your business by integrating applications with broader solutions</i>
18	Summary
18	For more information

Introduction

For more than a decade, Lotus® software innovations have changed the way individuals, teams and communities work together to achieve a common goal. Through IBM Lotus Notes® technology, it's possible to maximize the collaborative process, energize human interaction and ultimately drive business results for organizations of any size, in any industry.

Today, collaboration has expanded beyond e-mail, e-meetings, knowledge management, document management and workflow capabilities to include Web-based collaborative applications. Public and private Web portal environments. And a plethora of innovative new communication techniques, including instant messaging, online chat, awareness, application sharing, federated search and knowledge mining and discovery. But the collaboration market is undergoing a shift driven by:

- *The adoption of standards-based application servers.*
- *The need to embed collaborative capabilities into portals and business applications – instead of simply using collaboration as a separate, stand-alone application.*

The collaboration evolution – and IBM's commitment to innovation – fuel the new IBM Lotus Workplace strategy. This unique and innovative collaborative platform, aligned with existing Lotus Notes and IBM Lotus Domino™ solutions as well as IBM Lotus Domino Express solutions for small to midsize businesses, cultivates a new business model that integrates people with the information and business processes they need – on demand. Traditional collaborative solutions encapsulate collaborative features into product offerings, such as messaging, instant messaging and workflow applications. But Lotus Workplace integrates collaborative features into a single, consistent platform delivered through open standards to a variety of clients and applications. So collaborative capabilities infuse the user environment to help users work as efficiently as possible. By providing integrated collaborative capabilities that can be activated on demand in response to business change, Lotus Workplace helps drive down costs and increase business productivity.

The Lotus Workplace collaboration platform provides:

- *An easy-to-use, easy-to-manage, reliable, customizable work environment.*
- *Integrated collaborative capabilities in any combination on one unified, integrated platform to help lower your total cost of ownership.*
- *A mechanism to activate only the specific capabilities you need when you need them.*
- *An open-standards model that can be combined with vertical solutions provided by thousands of IBM Business Partners.*

IBM is committed to supporting and advancing the Lotus Notes and Lotus Domino messaging server and application-development and deployment platform for years to come. So you can feel confident that your Lotus Notes and Lotus Domino investments are protected. When you're ready, IBM can help you expand the collaborative capabilities of your Lotus investments by integrating them into Lotus Workplace. There you can continue to leverage Lotus Notes and Lotus Domino solutions – along with the value of integrated collaboration. You can customize your collaborative work environment with only the Lotus solutions necessary to meet your organization's unique requirements. Increase user productivity. And cut unnecessary spending. All these benefits help to reduce your total cost of ownership.

The following sections detail Lotus Notes and Lotus Domino enhancements you can expect in the next one to two years. And they show how you can leverage messaging and collaborative applications based on the Lotus Notes and Lotus Domino platform within Lotus Workplace.

Plan strategically to get the most from your Lotus software solutions

To understand the Lotus Notes and Lotus Domino releases coming to market in the near future, it's important to be familiar with the current offerings. Lotus Notes 6 and Lotus Domino 6 solutions were released to the market in October 2002 – offering more than 1,000 new features and enhancements in response to your requests and market shifts.

Do more with less to reduce total cost of ownership

In a business world focused on reducing costs, you must scrutinize spending and justify your contribution to the bottom line – to help you do more with less. With fewer resources and less time, Lotus Notes 6 and Lotus Domino 6 can help drive down costs across your entire messaging environment. With Lotus Notes and Lotus Domino software you can save money, drive productivity and increase automation, reducing your total cost of ownership.

Lotus Notes and Lotus Domino 6: Do more with less

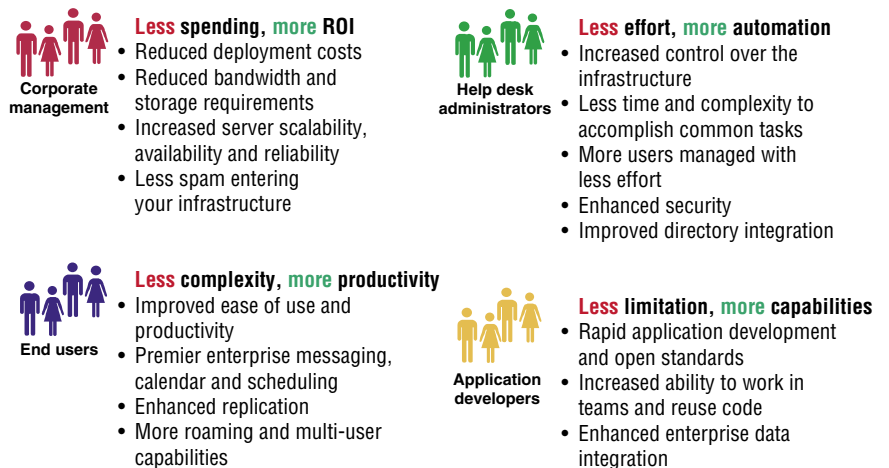


Figure 1. Driving down costs across the messaging environment can help all types of users do more with less.

Start using production-ready software sooner with a shorter release cycle

IBM has implemented a shorter release cycle that employs two fundamental principles. First, IBM is committed to reusing software, technology and knowledge across its entire software portfolio. In fact, release 6 of the Lotus Notes and Lotus Domino platform embraced this principle by integrating components and technology from DB2®, Tivoli® and WebSphere® software from IBM. This principle will drive future product design and strategy. Second, IBM is compressing the time between releases to 12 to 18 months. This strategy allows IBM to more responsively provide you with production-ready software.

Understanding the new release strategy will help you take advantage of future Lotus Notes and Lotus Domino releases outlined in the following sections. Release 6.5, introduced in the Fall of 2003, will be followed by another release in 2004 as part of the Lotus Workplace collaboration platform.

Achieve increased user productivity through messaging clients infused with collaboration

Release 6.5 of the Lotus Notes and IBM Lotus Domino Web Access clients builds on themes introduced in release 6:

- *Reducing total cost of ownership*
- *Boosting end-user productivity*
- *Increasing flexibility and scalability of the client experience, server deployment and development capabilities*

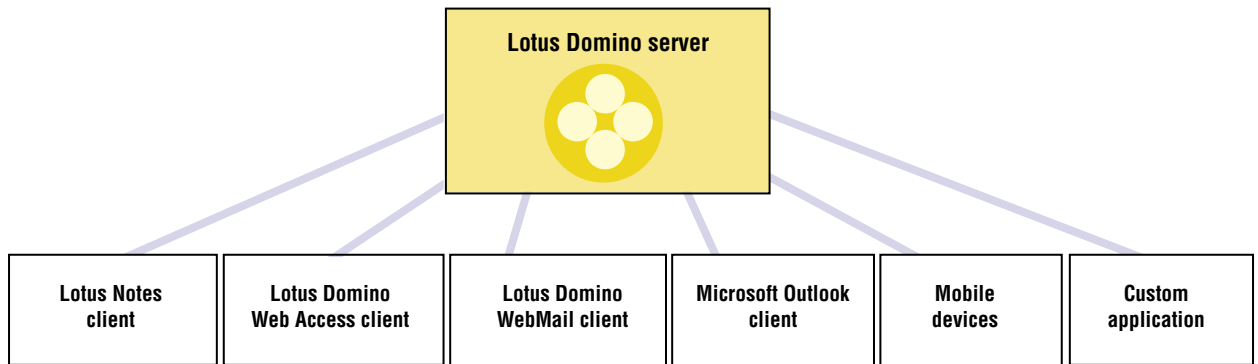


Figure 2. Lotus Domino server can be accessed from multiple types of clients.

Lotus Notes 6.5 client

Release 6.5 enriches the user collaboration experience with the Lotus Workplace for Notes welcome page. This innovative welcome page in the Lotus Notes client fuses key collaboration elements, including content, processes and people. Tight integration of Lotus Notes functions with IBM Lotus Instant Messaging (IBM Lotus Sametime®) software is pervasive throughout the Lotus Notes client, facilitating effective synchronous communication.¹ For example, end users can see from their inboxes whether an e-mail message sender or recipient is available to chat online. The Lotus Workplace for Notes welcome page also presents multiple views from various databases side by side with users' Lotus Instant Messaging contact lists, URL links, documents on disk and other collaborative elements. Providing faster access to other users and relevant information to help your staff be more productive. Integrated collaboration extends to forms, menus, toolbars and even IBM Lotus Domino Designer® software. For example, Lotus Domino Designer software lets you extend even more collaboration to your end users by merging instant messaging into collaborative applications. Using integrated collaborative applications enables end users to access critical information, responses and approvals instantly to complete projects promptly.

New forward and reply icons help users manage information more efficiently.

New follow-up flags help users identify messages that need to be followed up on.

Pervasive instant messaging integrated within Lotus Notes helps boost productivity by providing context to synchronous communication.

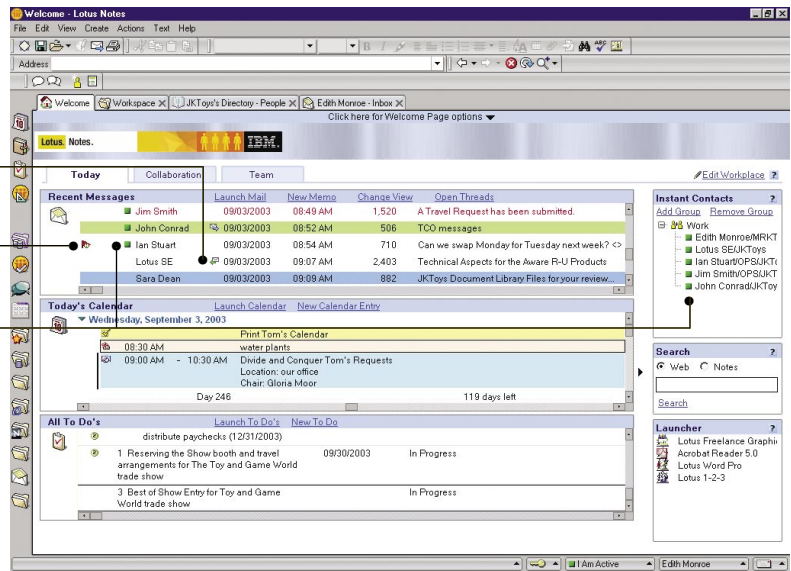


Figure 3. The Lotus Workplace for Notes welcome page in the Lotus Notes 6.5 client unites key collaborative elements to help drive user productivity.

Other enhancements to the Lotus Notes 6.5 client designed to increase user productivity:

Features and enhancements	Descriptions
Follow-up flags	The follow-up feature lets users flag messages that require future action. A flag appears in the column next to the message in views, like the inbox. Users can sort the flag column so that all messages requiring follow-up are grouped together. After following up, users can unmark the messages. The follow-up feature applies to e-mail items only and can be used from any e-mail view, except the trash and drafts views.
Quick rules and junk mail handling	Users can specify that junk mail (e-mail from known senders) be filed into the new junk mail folder. They can also quickly create e-mail rules, or quick rules, that file, delete or change the importance of e-mail arriving from known senders.
All unread view	An <i>all unread</i> view lets users see only their unread e-mail documents.
Replied or forwarded indicator	An icon at the view level and in e-mail message headers indicates whether users have responded to or forwarded e-mail documents.
Export to CSV format	Easily move information from any view into a comma separated variable (CSV) format to integrate with applications, including desktop productivity suites.
Time/date stamp field	Users can now see the time as well as the date each e-mail message was received in several Lotus Notes views.
Lotus Notes as the default e-mail client	Users can set Lotus Notes as their default e-mail client. Release 6.5 takes advantage of the new user interface (UI) component in Microsoft® Windows® 2000 (with Service Pack 3) and Microsoft Windows XP operating systems, which lets users set non-Microsoft applications as their defaults in the Add/Remove Programs window.

Lotus Domino Web Access 6.5 client

Release 6.5 of Lotus Domino Web Access software closes the functionality gap that existed between Lotus Notes 6 and former IBM Lotus iNotes™ Web Access 6 software. You can now take advantage of most Lotus Notes features – including messaging and calendar and scheduling—in Lotus Domino Web Access software. And enjoy the potential cost savings of running a server-deployed client.

Many of the Lotus Notes 6.5 enhancements described earlier – including integration with Lotus Instant Messaging software—are also available in Lotus Domino Web Access 6.5 software. So this application is ideal for deploying a Web-based solution to your office and knowledge workers.

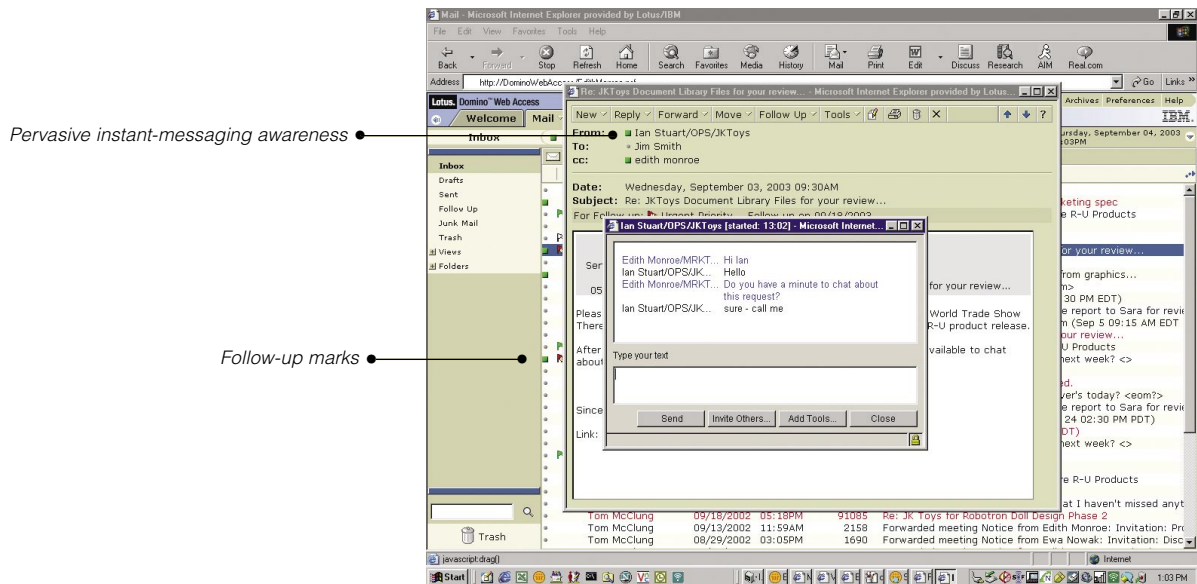


Figure 4. The Lotus Domino Web Access 6.5 client incorporates rich, collaborative features within a browser-based environment.

Other new Lotus Domino Web Access 6.5 features:

Features and enhancements	Descriptions
Bandwidth reduction and performance enhancements	Compression of Lotus Domino Web Access content helps reduce network bandwidth consumption by 70 percent. And it improves client performance on slow networks (modems). This helps improve client-side performance, especially in regions where bandwidth is at a premium.
Server-side caching of generated or compressed content	Server caching documents with generated or compressed content increases performance and scalability by providing faster document retrieval and supporting more users.
WebMail redirect	The WebMail redirect feature lets users enter a designated, simple URL where they will be authenticated and automatically and safely redirected to their personal mail database through Lotus Domino Web Access software. This feature streamlines the process of users accessing their mail files.
<i>All unread</i> view	Users can easily distinguish between read and unread e-mail messages by toggling to the <i>all unread</i> view.
<i>Copy into</i> support	A <i>copy into</i> button lets the recipient of an e-mail message copy the message contents into a new to-do item or calendar entry with a single click.
Design-template customization	Users can easily customize design templates to suit their business needs.
E-mail encryption update	Users can now send, sign and verify e-mail messages encrypted by Lotus Domino Web Access mail messages.
Block-sender mail rule	Users can add a recipient's name to a block-sender list so future messages from that address are denied entry and removed from the system.

Lower total cost of ownership with a comprehensive Linux portfolio

With the consistent focus on reducing total cost of ownership, the Linux operating environment is garnering more attention as a viable client/server platform. The Linux environment is strategic for organizations of all sizes, especially as a collaboration platform. The Linux platform is flexible and provides freedom from arduous licensing models, helping reduce your total cost of ownership. You can take advantage of a compelling and comprehensive end-to-end client-to-server collaborative solution by:

- *Running Lotus Domino Web Access software in the Mozilla browser on the Linux client.*
- *Running Lotus Domino server on the Linux platform, including Linux operating system for IBM @server® zSeries® server.*

Lotus Domino server has supported major Linux distributions, including Red Hat and SuSE. Lotus Domino 6.0.2 server began supporting the Linux operating environment as a server platform for Lotus Domino Web Access software. This lets you deploy Lotus Domino Web Access software on a Linux server accessed by the Microsoft Internet Explorer browser. Release 6.5 of

Lotus Domino Web Access software supports the Mozilla desktop running on a Linux client. Deploying the Linux platform at both the server and client can potentially save money and increase server flexibility. Running Lotus Domino Web Access software in the Mozilla browser offers most of the same features as running the client in the Internet Explorer browser – including integration with Lotus Instant Messaging software and replication for offline e-mail access.

Release 6.5 of Lotus Domino server also supports the Linux platform on @server zSeries server. This 31-bit implementation provides a reliable, scalable platform for server consolidation. Support for the Linux platform on @server zSeries server complements IBM's support for the Linux operating environment on an Intel® processor, which IBM continues to enhance within Lotus Domino 6.5 server.

Improve performance through server enhancements

The next major releases of Lotus Notes and Lotus Domino solutions—as part of the Lotus Workplace collaborative platform—is slated for 2004. This release provides DB2 storage as an alternative back-end data store as well as the traditional Lotus Notes storage facility (NSF) data store. This strategy is designed to increase scalability and performance to the same level – potentially higher – as in the NSF data store. And because Lotus Domino data is stored natively in DB2 storage, integration with other back-end systems and portals becomes simplified and more streamlined.

Moving NSF-based information to the DB2 back-end store, which is optional, is straightforward and efficient. DB2 storage is integrated with Lotus Domino server in a way that helps those organizations that have standardized on other relational database management systems (RDBMS) for other business applications embrace Lotus Domino server with a DB2 data store. DB2 storage is available for local and remote server use and will support the security features that are an integral part of Lotus Domino server.

From a collaborative application perspective, DB2 back-end integration occurs deep within the code. So existing Lotus Notes and Lotus Domino applications run as they always have – meaning less work for application developers. Furthermore, application developers can continue to use the same tools, like Lotus Domino Designer software, but can design applications with more control and flexibility.

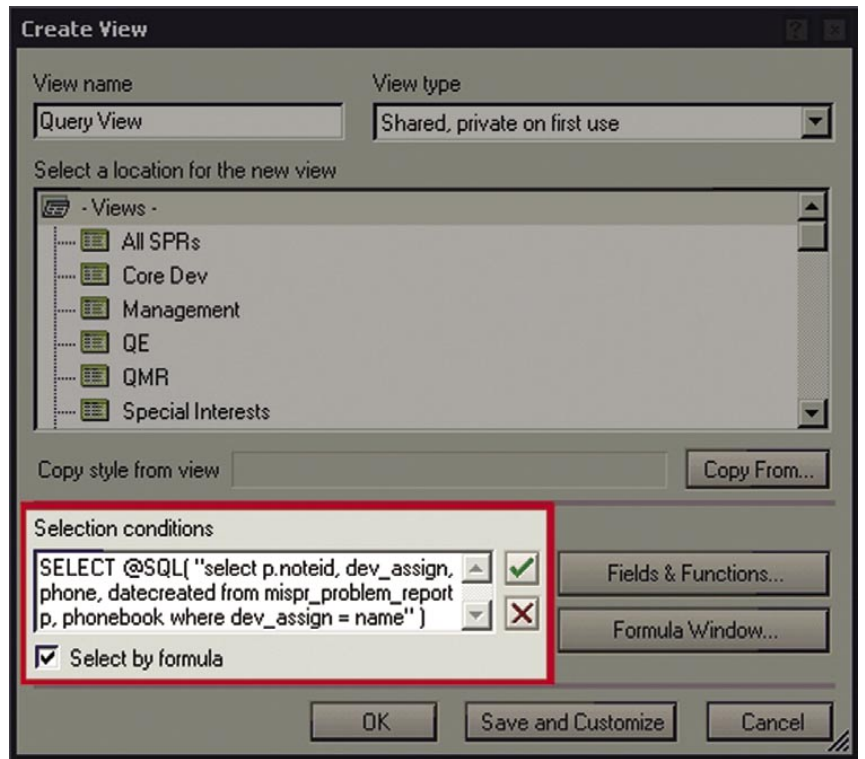


Figure 5. The Lotus Domino Designer SQL-based view in the Lotus Notes and Lotus Domino 2004 release can help streamline the application creation process.

Figure 5 shows an example of a new type of view available in Lotus Notes and Lotus Domino software in 2004. A structured query language (SQL) view simplifies the view-creation process (especially when the view includes aggregation of field values) compared with current methods, like LotusScript. And SQL views exhibit faster performance than traditional views, considering the optimization DB2 storage provides. SQL-based views can be applied on both a per-form and per-database basis and can accept dynamic values for ad hoc use. So, as opposed to LotusScript queries, SQL queries let you create applications more easily and with less code.

DB2 software is a key linkage point that, over time, will more tightly integrate the Lotus Domino platform into the Lotus Workplace collaboration platform. This is only one of the many enhancements to Lotus Domino server you can take advantage of in 2004.

Roadmap to efficient application development

The Lotus Domino platform is an integral part of the Lotus Workplace strategy. By extension, applications based on Lotus Domino server that are currently surfaced through the Lotus Notes client or a Web browser can be integrated with the Lotus Workplace collaboration platform (shown in Figure 6). Enabling you to tightly weave collaboration into your Lotus software solutions to help increase user productivity. Customize workplaces with only the applications users need. And lower your total cost of ownership.

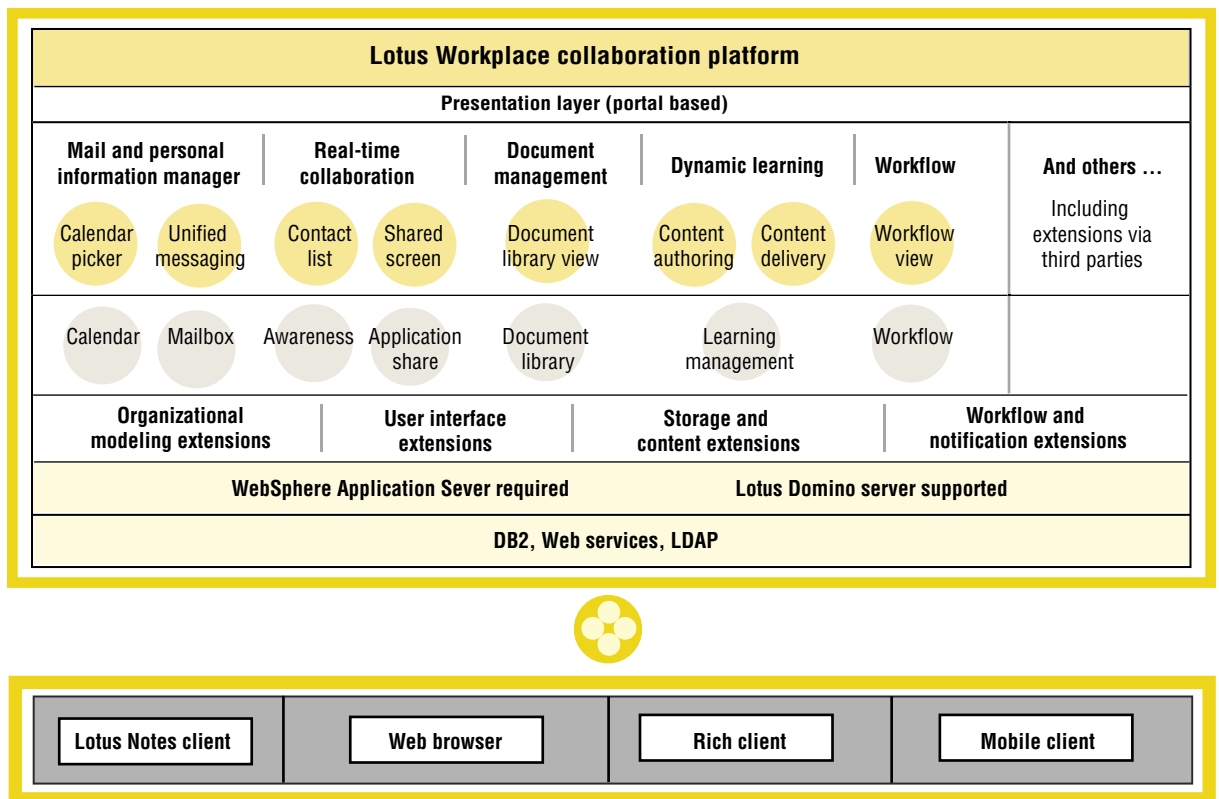


Figure 6. Help boost user productivity and lower costs by integrating Lotus Domino applications into the Lotus Workplace architecture.

There are several options for integrating your new and existing Lotus Notes and Lotus Domino collaborative applications into the Lotus Workplace collaboration platform. The method and depth of integration depend on a number of factors, including:

- *The life span of the application.*
- *The usage scenario for the application.*
- *The value of the application to your organization.*

The following sections explore current Lotus Workplace integration options and options that will be available in the next one to two years.

Get continued support for the standard rapid application-development tool

Lotus Domino Designer software continues to set the standard for rapidly creating collaborative applications on the Lotus Notes and Lotus Domino platform. And it continues to be the standard for Lotus Notes and Lotus Domino software in 2004, in which collaborative applications leverage the relational data store based on the DB2 system. Lotus Domino Designer software is easy to use, enabling even novice application developers to work more rapidly. At the same time, it provides the horsepower and features that the most demanding application developers need – whether they're developing applications for a Lotus Notes client, the Web or mobile devices. And with the IBM Lotus Enterprise Integrator® for Domino data access tool, collaborative applications can easily interact with back-end relational databases or enterprise resource planning (ERP) systems.

Explore new and existing Lotus Notes and Lotus Domino applications

The Lotus Notes and Lotus Domino platform and Lotus Domino Designer software provide a comprehensive application-development and execution environment designed to work in a variety of settings. This environment provides the complete infrastructure needed to create, test, deploy and manage distributed, multilingual applications, including directory, database, application server, administration, security, connectivity, Web server, e-mail server and calendaring engine. Everything you need is ready to use out of the box so you can start creating business-critical applications immediately and cost-effectively.

Lotus Domino developers can design applications for the Lotus Notes client, Web browsers, mobile phone and handheld devices or, most commonly, for a hybrid environment accessed by multiple types of clients. The Lotus Notes and Lotus Domino platform has been optimized to work equally well whether users are attached to the server over a LAN connection, dialing in remotely over a phone line or working offline. Ideal Lotus Notes and Lotus Domino solutions include document-centric and workflow-process routing, such as project teamrooms, document repositories, discussion forums, sales-force enablement and employee self-service applications. Because Lotus Notes and Lotus Domino solutions are integral parts of the Lotus Workplace collaboration platform, they will provide collaborative application value for years to come.

Expand your business by integrating applications with broader solutions

With the maturation of the Web and its increased use in business, Lotus Domino server has become integral to effectively using Web-based technologies. This is true whether these applications are surfaced through a Web browser, through a portal – like IBM WebSphere Portal software – or through the Lotus Workplace portal framework. The following sections outline available options to help you create new applications based on the Lotus Domino platform. Or integrate existing Lotus Domino applications into a broader Web-based environment.

Use a servlet engine to quickly develop Web-enabled applications

IBM is committed to implementing a strategy that exploits the Java™ 2 Platform, Enterprise Edition (J2EE) development model. Enabling you to extend your Lotus Notes and Lotus Domino applications with J2EE elements like JavaServer Pages (JSP) technology and servlets – at minimal cost. (With Lotus Notes and Lotus Domino 6.x solutions, you're entitled to a free version of IBM WebSphere Application Server software, which is specially licensed for use with Lotus Domino applications and allows you to use servlets that access Lotus Domino server.)

Lotus Domino 6 server contains several features that support the J2EE model, including a JSP tag library, proven Java application programming interfaces (APIs) and the ability to call Java classes from LotusScript, the BASIC-compatible scripting model in Lotus Domino server. You can benefit from exclusive Lotus Domino and WebSphere integration features, including single sign-on (SSO) and extensive testing conducted between the products. The combination makes it easy to extend Lotus Domino applications with J2EE elements for increased scalability, granularity and flexibility.

Lotus Domino application developers can now:

- *Increase scalability of applications by using JSP technology for high-volume pages, like index or home pages, while Lotus Domino server stores and presents specific documents. JSP technology also offers pixel-level control in presenting the same content and objects in ways that can be challenging to duplicate in native Lotus Domino forms and documents.*
- *Mix servlets with agents in Lotus Domino applications and workflows. This improves performance because servlets are instantiated once and remain resident in memory. Agents retain advantages specific to the Lotus Domino object model, including more granular security features. But intelligent use of servlets can extend a Lotus Domino application's functionality while improving its performance.*
- *Expose Lotus Domino application functionality as Web services, which can be accessed remotely by other servers and applications. WebSphere Application Server software can provide the Java servlet and Web services engine that make this exposure possible.*

Broaden the scope of Web applications while leveraging your investments

As interest in and use of J2EE technology has proliferated, organizations with numerous Lotus Notes and Lotus Domino applications want to leverage their investments while creating more holistic, broader-scope Web applications. The Lotus Domino toolkit for WebSphere Studio plug-in to version 5 of IBM WebSphere Studio software lets JSP developers use Lotus Domino 6 custom JSP tags to easily enhance J2EE applications that include collaborative features and data from existing Lotus Notes and Lotus Domino applications. So developers can leverage their investments in those applications on a new platform. Developers can drag the form, view or agent onto a new or existing JSP Web page and automatically generate Lotus Domino custom JSP tag code. Lotus Notes and Lotus Domino developers can also use the toolkit to leverage their existing development skills. Blending Lotus Domino advantages for collaboration with the transactional capabilities that run on WebSphere Application Server software and are designed for J2EE architecture. For developers unfamiliar with the Lotus Domino platform, the toolkit enables simplified access to the Lotus Notes and Lotus Domino data store and application features within the context of the J2EE technology.

“Lotus continued its leads in revenue, claiming 46.2% of all revenue for the integrated collaborative environment (ICE) market in 2002.”²

– IDC, June 2003

Integrate applications with portals to access more information

Over the last five years, portals have emerged as integral parts of corporate IT infrastructures. Portals enable organizations to cut costs, work more efficiently and enhance collaboration with groups vital to their ongoing profitability and success. More than a technological advance, portals offer a new way of doing business – one that is faster, more open and more flexible than previous paradigms. For example, portals provide role-based access to content across several applications and content sources, which is more powerful than using only one application to access one content source at a time. Giving users a peripheral-vision approach to accessing information.

Combining WebSphere Portal software with the leading integrated collaborative environment – the Lotus Notes and Lotus Domino platform – your organization can weave collaboration and human interaction into key applications and processes that span your value chain. From applications (like ERP and CRM applications) to employees, suppliers, partners and customers. Allowing everyone involved to work together more easily than before. For example, your company’s suppliers can log on to a supply chain application portal through a browser. There they can click a tab with their corresponding company name to view the products they provide to your organization – or click another tab to see a consolidated view of products from all of your vendors. Your suppliers can also access their e-mail and instant messaging contact lists from the portal. So they can track the inventory they sell to you through a security-rich portal and communicate with you instantly when they need to.

Choose the most effortless portal integration technology

There are several ways to integrate Lotus Domino server into WebSphere Portal software. One of the most innovative and easy-to-use tools is the portlet builder for Lotus Domino component (shown in Figure 7) of the WebSphere Portal application integrator offering. The portlet builder for Lotus Domino component provides an extension to your development team by letting power users (like consultants and executive and senior managers) quickly and easily build portlets around enterprise application functions. This out-of-the-box portlet provides rapid connectivity to any Lotus Domino application and requires no changes to the server or application. Rapid portlet development and real-time

“IBM holds the most market share in application servers, integration brokers and portal products.”³

—Gartner, Inc., May 2003

implementation speed portlet deployment without requiring any programming. You can easily customize Lotus Domino views by selecting which columns and fields to display, manipulating columns and customizing forms —making integration easier than before. The existing security model can be enhanced by integrating with an SSO solution. With SSO, users can log on just once – to the portal – then access all the integrated applications from there instead of logging on to each individual application. The ability to log on only once to access all applications saves time and reduces user frustration.

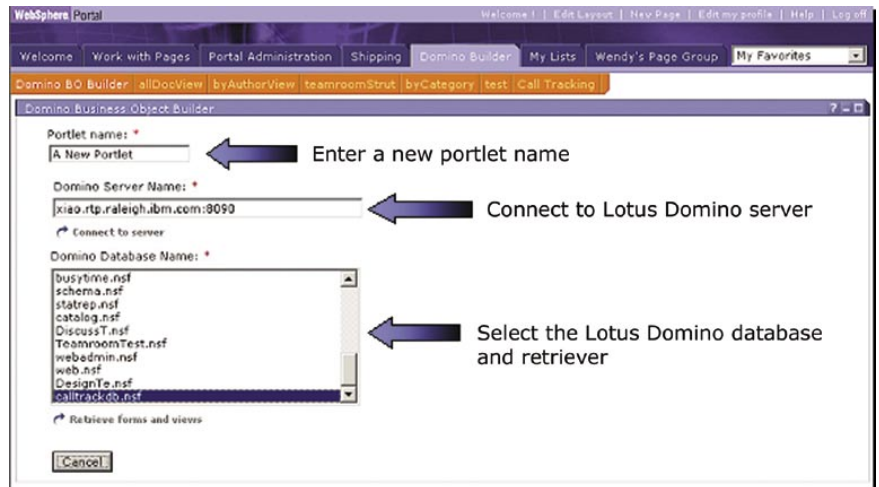


Figure 7. Use the portlet builder for Lotus Domino server to help speed portlet deployment.

Based on WebSphere Portal software, the portlet builder for Lotus Domino component can also be used with the Lotus Workplace portal framework. This ability to use the component within the Lotus Workplace platform gives you granular control of collaborative features originating from Lotus Domino applications and surfaced with either WebSphere Portal software or within the Lotus Workplace platform.

Leverage J2EE technology-based rapid application-development tools — with minimal complexity

J2EE architectures offer platforms with inherent performance benefits for Web application development, generally, and collaborative application development, specifically. Many customers and application providers are already reaping these benefits in their systems and solutions. These trends foreshadow tremendous growth in the use of J2EE architectures. To facilitate this rapid

growth, however, development of J2EE applications and services must develop attributes that appeal to a broader developer audience, like Web application developers in business units and even power users. The J2EE evolution can only occur with the creation of a rapid application-development (RAD) tool that empowers Web application developers to build and connect components, data and application business logic while insulating them from the complexities of the J2EE architecture.

IBM is leveraging its understanding of RAD tool users' needs – along with the expertise gained in developing Lotus Domino Designer software – to build a premier J2EE RAD tool primarily targeted at IBM and J2EE platforms. This project, a cooperative development effort between the Lotus and WebSphere software engineering teams, is underway.

The project's intended audience includes corporate Web application developers, solution providers and IBM Business Partners. These developers, as opposed to systems programmers or enterprise developers, generally seek to create a user experience that executes behaviors (performs certain functions). The appearance and flow of the application, along with the behaviors it performs, define the application for an application developer. The developers generally start with the UI because they think of the application first in terms of how it looks. Behaviors are then added on top of the UI, and pages are linked together to form the application.

The RAD tool will provide an easy, visual way to develop rich Web applications that leverage the J2EE environment. However, while the RAD tool will support the easy creation of applications, it won't be limited to generating simple applications. The RAD tool will benefit developers who are comfortable working independently by providing a rapid way to build the foundation of an application. Then it allows complete customization through access to any details of the application using tools in WebSphere Studio software. The RAD tool will also be comprehensive, covering all phases of application development, including coding, testing and deployment. Based on the IBM Eclipse open-source framework, the RAD tool leverages the tools available in the WebSphere Studio family for many key functions, including page design, script editing, debugging and bean creation. IBM will continue to enhance Lotus Domino Designer software as a hybrid client application-development environment for Lotus Domino server with utilities added over time to facilitate interaction with WebSphere tools.

Summary

Simplification is key to improving productivity and lowering total cost of ownership. IBM, a leader in collaboration, has created Lotus Workplace, a new platform that integrates people with business processes. By combining multiple collaborative capabilities into a single, security-rich, easily managed platform that can be extended beyond organizational boundaries, Lotus Workplace can help simplify your overall business operations.

Lotus Notes and Lotus Domino software are integral parts of the Lotus Workplace collaboration platform and will help drive effective collaboration for years to come. So you can continue to leverage your Lotus Notes and Lotus Domino expertise and applications. IBM is committed to protecting and advancing your Lotus investments – from both a messaging and an application-development perspective. You can continue using Lotus Notes and Lotus Domino applications independently from other Lotus Workplace products. Or you can integrate Lotus Notes and Lotus Domino applications with Lotus Workplace to create rich and dynamic collaborative applications. IBM's continued commitment to Lotus Notes and Lotus Domino solutions is solid, with releases scheduled as part of Lotus Workplace for years to come. And there are a host of options for proceeding with existing Lotus Notes and Lotus Domino applications – either on their own or integrated into the Lotus Workplace collaboration platform and WebSphere Portal software.

For more information

To learn more about how your Lotus Notes and Lotus Domino investments can integrate into the Lotus Workplace collaboration platform, visit:

ibm.com/lotus/workplace



© Copyright IBM Corporation 2003

Lotus Software
IBM Software Group
One Rogers Street
Cambridge, MA 02142
U.S.A.

Produced in the United States of America
10-03
All Rights Reserved

DB2, Domino, Domino Designer, the e-business logo, @server, IBM, the IBM logo, iNotes, Lotus, Lotus Enterprise Integrator, Lotus Notes, Sametime, Tivoli, WebSphere and zSeries are trademarks of International Business Machines Corporation in the United States, other countries or both.

Intel is a trademark of Intel Corporation in the United States, other countries, or both.

Microsoft and Windows are trademarks of Microsoft Corporation in the United States, other countries or both.

Java and all Java-based trademarks are trademarks of Sun Microsystems, Inc. in the United States, other countries or both.

Other company, product and service names may be trademarks or service marks of others.

All statements regarding IBM future direction or intent are subject to change or withdrawal without notice and represent goals and objectives only.

¹ Licenses for IBM Lotus Instant Messaging required.

² Mark Levitt and Robert Mahowald. "Worldwide Integrated Collaborative Environments Forecast and Analysis, 2003-2007: Raising the Melting Point of ICE." IDC. June 2003.

³ Joanne Correia, Yefim Natis, Massimo Pezzini and Roy Schulte. "Gartner FirstTake." Gartner. May 7, 2003.