



Enterprise Content Management

Enterprise Content Management on System z Product Announcement

Mike Zimmer

Worldwide ECM on System z Program Manager

IBM Corporation

mzimmer@us.ibm.com

November 11, 2008



Disclaimer

The information contained in this documentation is provided for informational purposes only. While efforts were made to verify the completeness and accuracy of the information provided, it is provided “as is” without warranty of any kind, express or implied. IBM shall not be responsible for any damages arising out of the use of, or otherwise related to, this documentation or any other documentation. Nothing contained in this documentation is intended to, nor shall have the effect of, creating any warranties or representations from IBM (or its suppliers or licensors), or altering the terms and conditions of the applicable license agreement governing the use of IBM software.



Agenda

- **System z10 Momentum**
- **ECM on System z Overview**
- **ECM Announcements**



System z - The momentum continues to grow

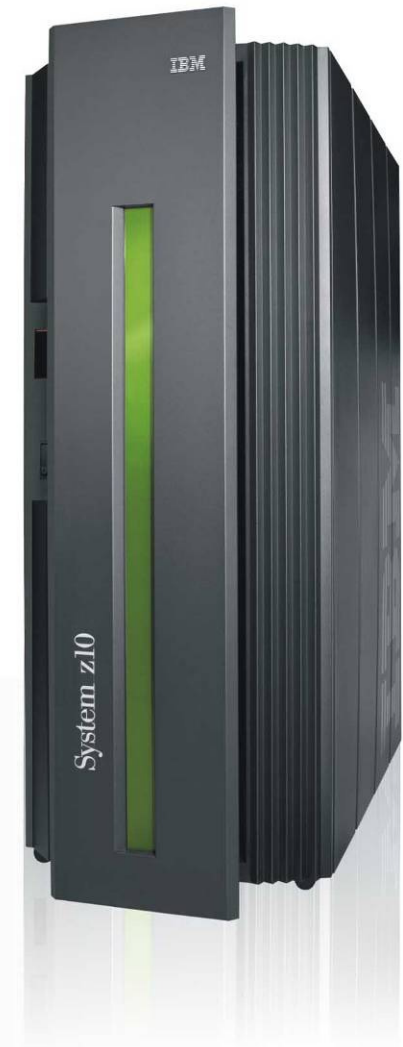
- System z is a very strategic platform for IBM
 - Investing approximately \$1B annually in System z innovation, client success, and solution development
- IBM System z10 technology has spurred new growth in System z and its ecosystem
 - 30% capacity growth in 1H 08
 - 32% Revenue growth in Q2, 25% in Q3
 - More than 100 new ISV partners
 - Linux server revenue grew 28% YTY in 2Q08 ⁽¹⁾
 - IDC reports System z grows to 37% share (> \$250K space) in 2Q08 ⁽²⁾
 - System z installations continue to expand ⁽³⁾



IBM System z10 Business Class

Innovative technologies, leadership capabilities

- New high performance System z server
- A single model with 130 capacity settings for right-sizing and granular growth
- Enhanced temporary upgrade capabilities
- Hot-pluggable I/O drawers help increase flexibility
- Reduced cost features:
 - Smaller capacity I/O cards
 - lower entry memory



Learn more at

ibm.com/systems/z



The Smart and Affordable platform for new workloads

- *Why are organizations adding new workload on z?*
 - Tremendous efficiencies through co-location of applications and data
 - Huge economies of scale (energy, people, etc)
 - Legendary Quality of Service and Security
 - The Disaster-recovery platform the world trusts
- *Announcing lower prices for new workloads:*
 - Integrated Facility for Linux (IFL), System z Integrated Information Processor (zIIP) and System z Application Assist Processor (zAAP) reduced by 50% ⁽¹⁾
 - z10™ BC Only
 - Memory prices reduced by over 60% ⁽²⁾
 - For memory purchased with a new Specialty Engine
 - Valid on IBM System z10 Enterprise Class (z10 EC™) and z10 BC

(1) Based on US list price, May vary in other countries. Internal Coupling Engines excluded,

(2) Up to 16 GB DRAM per specialty engine



Linux on System z: Open for Business

Linux on System z is now mainstream

- Huge Momentum and Growth
- Abundant Linux skills in the marketplace

Linux on System z is enterprise class

- Enterprise standard quality of service
- Co-location of apps with z/OS-hosted data delivers tremendous value to **both environments**

Linux on System z lowers cost

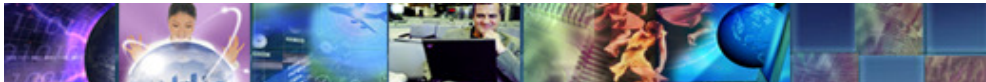
- Huge potential for savings through consolidation
- Highly cost efficient new workload deployment
- Now with z10 BC - Up to 50% more performance at half the price
- IBM Migration Factory to make it work for you



System z Ecosystem - The growing zCommunity

Dramatic growth responding to market demand

- *Expanding application portfolio on System z driven by ISV growth:*
 - Over 1,400 ISVs building applications (including 130 New YTD) for System z
 - 5,000+ applications available (including over 600 new YTD and 2,450+ that run on Linux for System z)
- *IBM Academic Initiative driving Skills growth on System z*
 - 50,000 Students attended mainframe education
 - 481 Schools registered offering 29 separate courses and more to come
 - Student Mainframe Contest:
 - 10 contests, more than 1,100 schools; more than 8,500 students





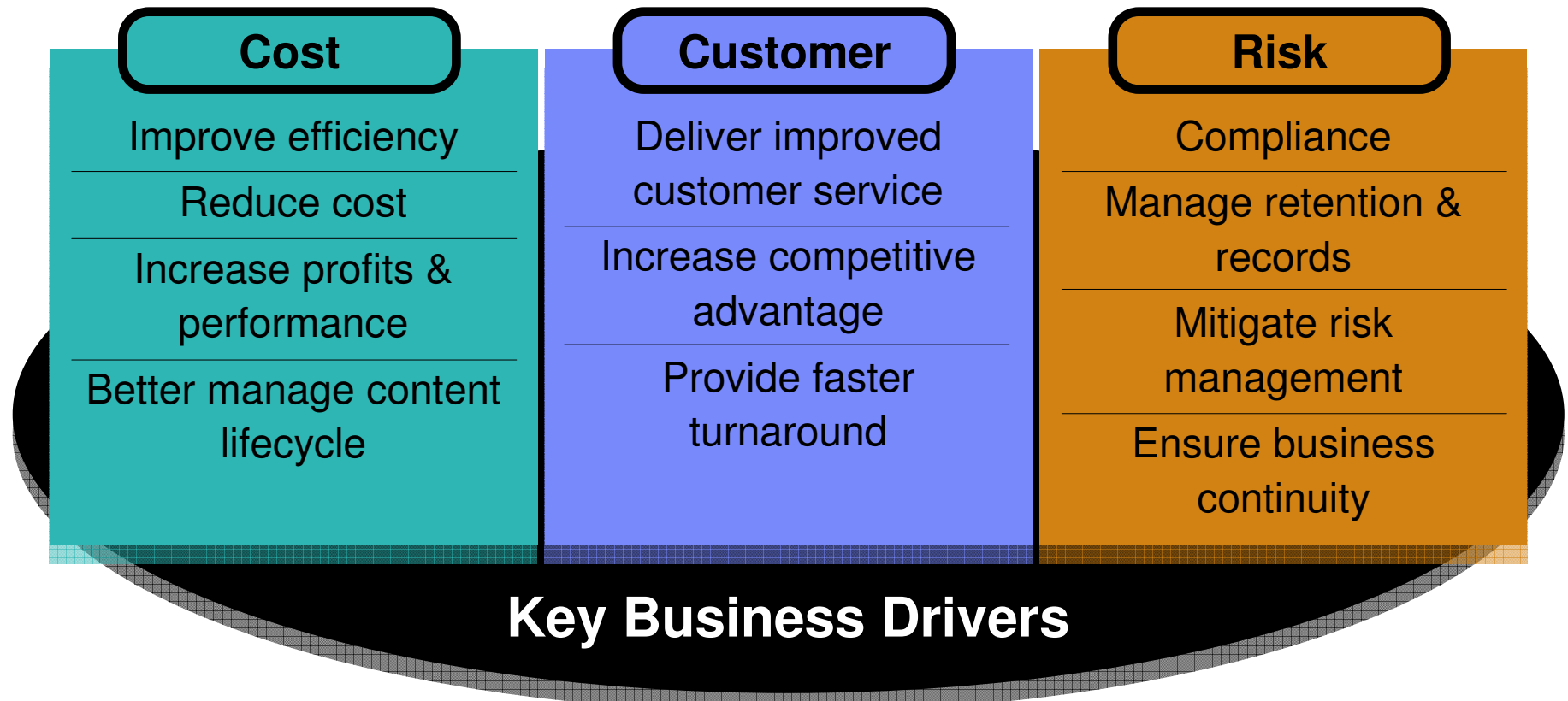
Enterprise Content Management

What is Enterprise Content Management?



What is Enterprise Content Management?

“Enterprise Content Management (ECM) is the technologies used to capture, manage, store, preserve, and deliver content and documents related to organizational processes. ECM tools and strategies allow the management of an organization's unstructured information, wherever that information exists.” Source: www.aiim.org



Source: AIIM Global Survey, March 2007, 1200+ respondents



What is ECM on System z?

IBM's **ECM on System z** solutions provide world-class Enterprise Content Management capabilities for the most trusted, scalable, and secure server platform in the world - the IBM System z



- IBM ImagePlus - high volume document imaging
 - IBM Content Manager (CM8) - Content Management
 - IBM Content Manager OnDemand (CM OD) - Report Management and Electronic Statement/Bill Presentment
 - IBM FileNet P8 Content Manager - Content Management
- Now supports Linux for System z



Mainframes make fabulous ECM servers

- **Because:**
 - Mainframes excel at high-availability, I/O intensive applications serving medium to large user populations
 - The Reliability, Availability, and Scalability of the System z makes it an ideal server for medium to large organizations to standardize on for ECM
 - Mainframe extension:
 - Delivers new business capability faster
 - Provides the lowest total cost of ownership for many organizations by building on the existing investments in I/T, data center and people skills
- **IBM is the only company that offers a full set of ECM capabilities for the IBM System z**



ECM on System z White Paper

White papers

IBM Enterprise Content Management on IBM System z
Enterprise Content Management software transforms business processes, manages all forms of information, and secures information to meet compliance needs. ECM solutions Content Manager, CM OnDemand, and ImagePlus provide world-class ECM capabilities for the IBM System z.

Last updated: 29 Oct 2008

 [View PDF \(925KB\)](#)

- **Overviews why System z customers chose to deploy ECM on System z and includes several real customer examples**
- **Go to ibm.com/software/ecm**
 - Select **Library** from the left hand column
 - Select **White Papers**





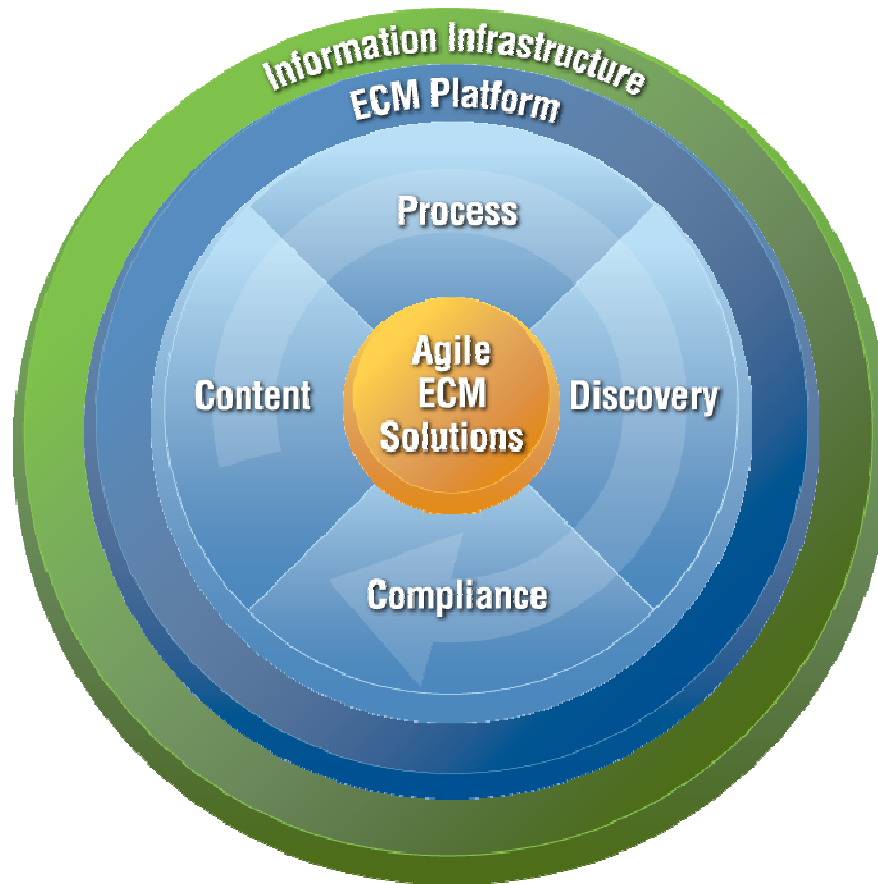
Enterprise Content Management

Announcements



IBM Agile ECM

empowering better decisions faster



IBM Agile ECM helps companies make *better decisions faster* by:

- Managing all forms of content
- Optimizing associated business processes
- Enabling compliance

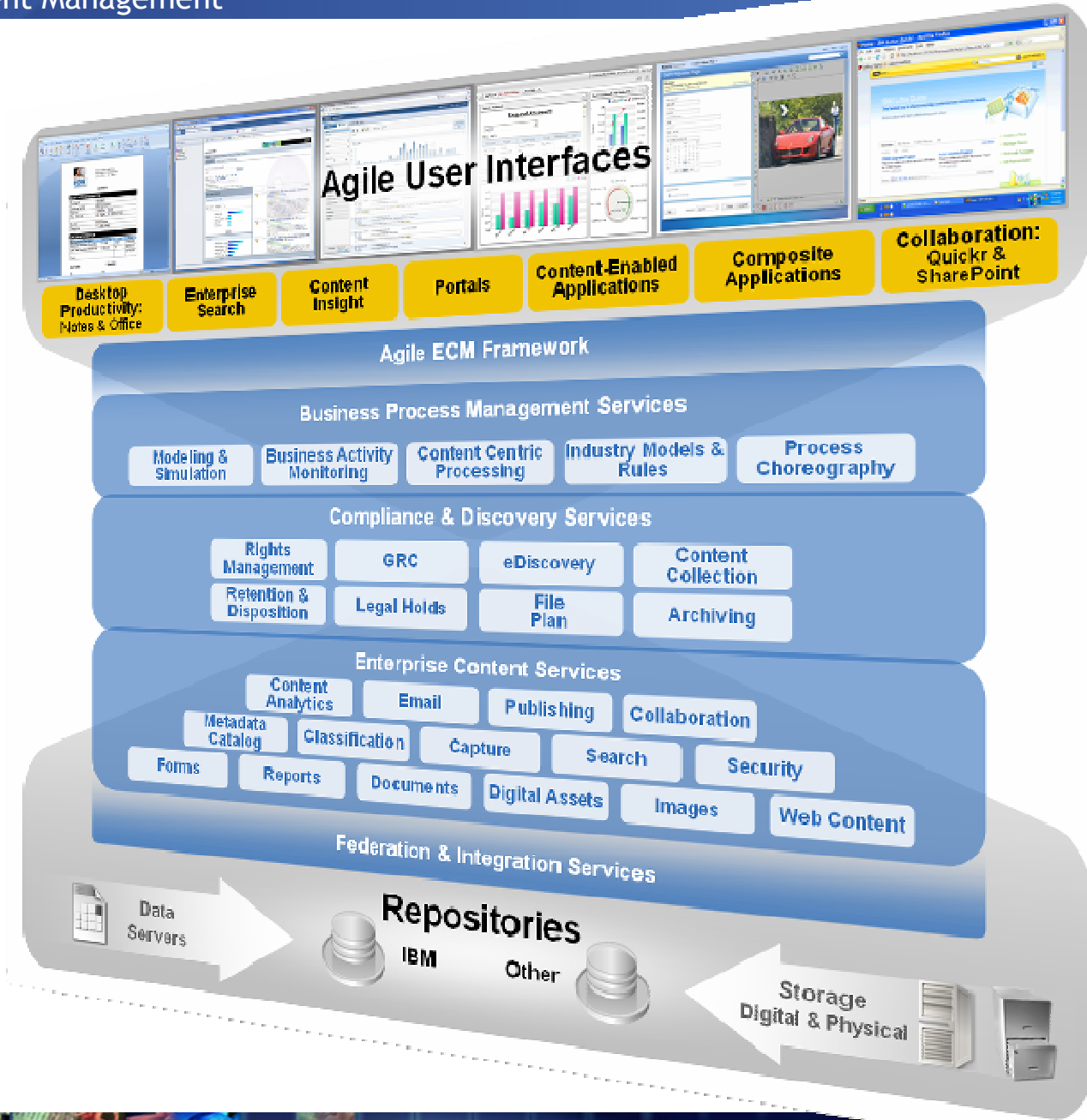
through an integrated information infrastructure





IBM Agile ECM Product Strategy

- Pervasive Persuasive**
- Business Agility**
- Enterprise Compliance**
- Active Content**
- Content Anywhere**



ECM on System z Announcements

- **IBM Content Manager (CM8)**
 - New release supports direct integration with FileNet BPM and Records Manager solutions along with significant User Interface updates
- **IBM CM OnDemand**
 - New release supports direct integration with FileNet BPM and Records Manager
- **IBM FileNet P8 Content Manager**
 - New release supports Linux for System z



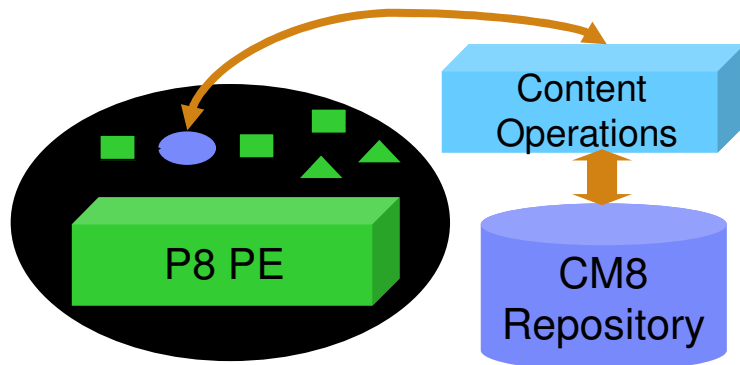
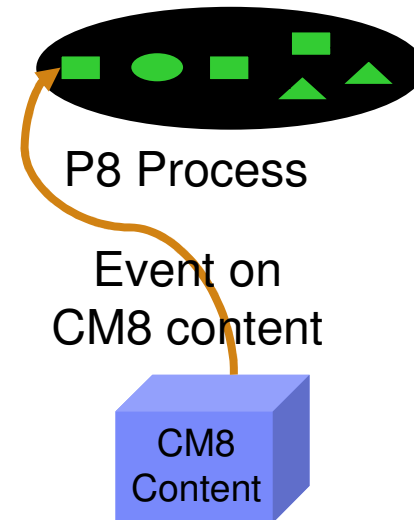
IBM Content Manager 8.4.1

- Manages all types of digitized content across multiple platforms, databases and applications.
- The new release provides active content capabilities which allow content in CM8 to participate in IBM FileNet BPM 4.5 processes.
- The new release also provides integration with FileNet P8 Records Manager allowing content in CM8 to be managed by the P8 RM solution.
- Additionally CM 8.4.1 has been enhanced to support collaborative content management through integration with Lotus Quickr and includes new Web Interface (WEBi) enhancements that support Web 2.0 style interaction.
- Runs on many platforms including z/OS and Linux for System z



Active Content and Content Operations for CM V8

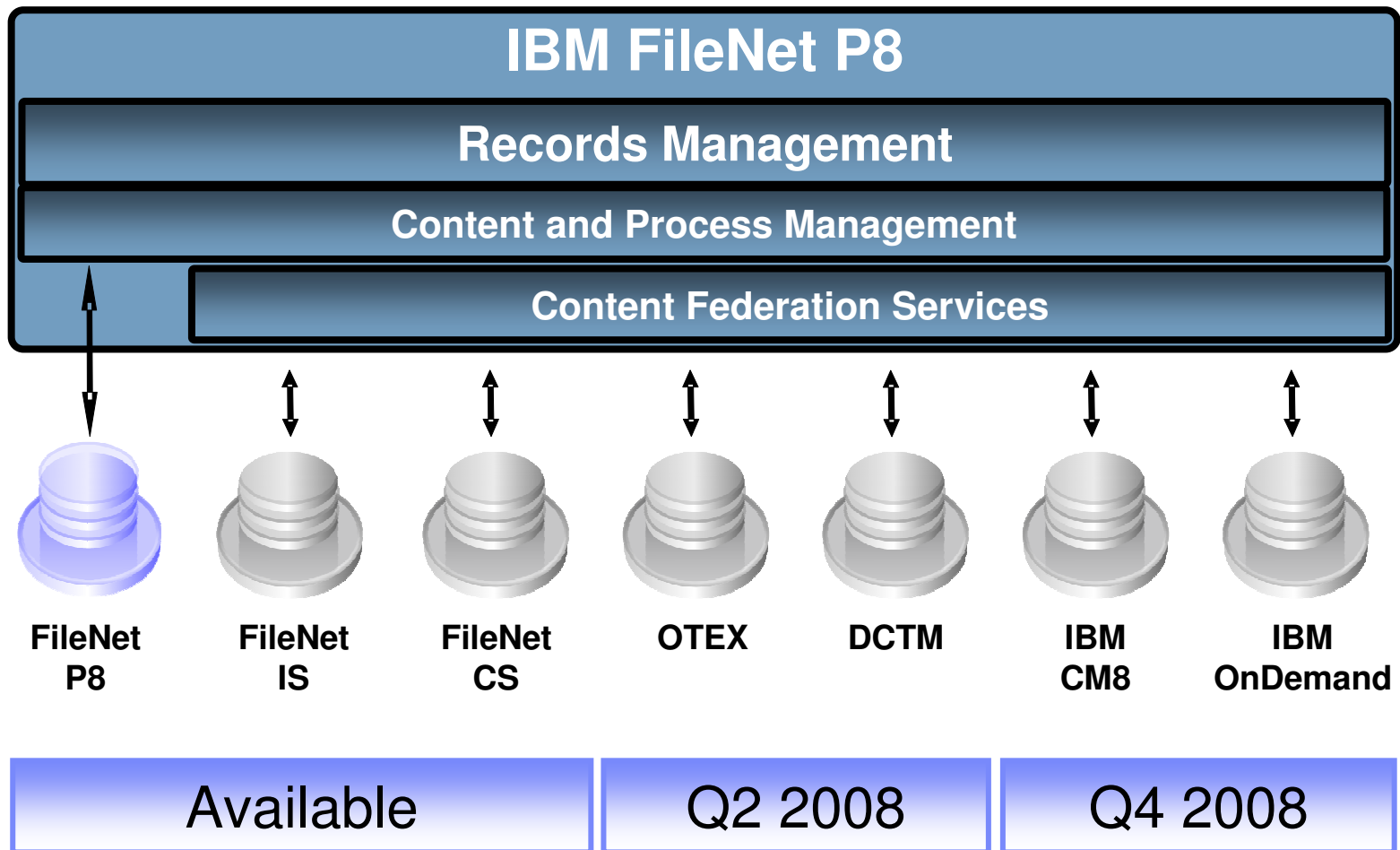
- CM8 is enhanced to become event-enabled
- Events on CM8 content (create, update, delete, etc.) are captured
- Events trigger BPM processes



- Content Operations enable business processes to interact with CM documents
 - check-in, check-out, version, create, get properties
- Operations become part of the business process



P8 Records Management for CM V8



WEBi User Experience for IBM CM8

IBM Web Interface for Content Management Version 1.0.3 - Microsoft Internet Explorer

Address: <http://cmi377.svl.ibm.com:9080/wccommonservlets/>

Web Interface for Content Management Version 1.0.3

PORTLS CM Server

Navigation

Items

Find: [dropdown]

- Recent Items
 - Article documents
 - Adjuster Report
 - Claim Form
 - Claim Folder
 - #\$^%=&. +@*()!~'"
- All Items

Inbox

Search In A [dropdown]

Search results

	Date	Keywords	Figure Resource
<input type="checkbox"/>	2008-07-17	abc	xyz
<input checked="" type="checkbox"/>	2005-01-26	Represent ed	downloa
<input type="checkbox"/>	2008-07-17	abc	xyz
<input type="checkbox"/>	2005-09-05	multi01	fr
<input type="checkbox"/>	2005-09-05	multi02	fr
<input type="checkbox"/>	2005-09-05	multi03	fr
<input type="checkbox"/>	2005-09-05	multi04	fr

Context Menu:

- View
- Edit Properties
- Send Link by E-mail
- Send Document by E-mail
- Edit Document
- Download
- Lock
- Unlock
- Check Out
- Check in
- Add Document
- Create Folder**
- Add to Folder
- Delete
- Start on Workflow

✓ The search returned 83 documents.



IBM Content Manager OnDemand 8.4.1

- Provides advanced enterprise report management.
- The new release includes integration to IBM FileNet P8 for federated Records Management and BPM applications.
- New retention management controls
- Attach OnDemand reports to P8 BPM processes
- Enhanced expiration and retention management
- Improved performance and storage with CMOD PDF indexer
- Runs on many platforms including z/OS and Linux for System z



IBM FileNet P8 Content Manager 4.5

- Designed to provide clients with a scalable, single content catalog that embeds IBM's content-centric BPM and compliance capabilities into an ECM platform operating on content in multiple repositories.
- The enhanced FileNet Content Manager enables intuitive integration with Lotus Quickr, Microsoft Office 2007, and Microsoft SharePoint, allowing users choice while interacting with and benefiting from ECM capabilities.
- FileNet Content Manager has also implemented a component-based content model leveraging the DITA XML standard, now broadly adopted in the industry for advanced document management applications. DITA supports agility through the reuse of document components in support of diverse authoring and publishing requirements.
- Now also supported on Linux for System z



IBM FileNet Business Process Manager 4.5

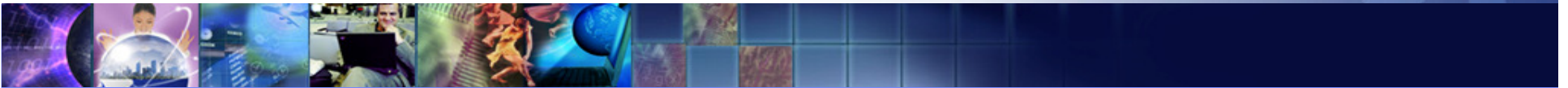
- A comprehensive, enterprise-class offering for managing content-centric business processes
- It supports business user-oriented and standards-based process modeling and simulation, promotes business user and IT collaboration, and provides tools for agile ECM application development, utilizing Smart SOA and Web 2.0 technologies such as mashups.
- Now enables users to launch FileNet BPM processes for content in multiple repositories including IBM Content Manager 8 (CM8) on all platforms (including Linux for System z and z/OS).
- This seamless integration to IBM CM8 allows a FileNet BPM process to make changes to IBM CM8 content thru IBM CM8-specific content operations.





Enterprise Content Management

Other Announcements



Compliance and Discovery Offerings

- The IBM Content Collection and Archiving family is based on a modular, extensible architecture that helps enable organizations to take back control and unlock business value of content, while enforcing compliance and operational policies.
- IBM's records management offerings are a prescriptive set of deployment and management practices, tools and best practices to eliminate deployment complexity, mitigate risks associated with lack of best practices and industry skill and knowledge shortages.
- IBM's eDiscovery products help clients take the cost out of electronic discovery management. The offerings provide an integrated, in-house approach that helps control stored information and litigation response across the enterprise.
- IBM FileNet P8 integration with IBM Content Analyzer enables organizations to increase the return on their enterprise content investment by analyzing unstructured content together with structured data to gain valuable, even business-changing insight from all information.



Announcement Details

- **For additional information on all of these announcements please visit:**
 - ibm.com/software/ecm





Mike Zimmer
Worldwide ECM on System z Program Manager
IBM Corporation
mzimmer@us.ibm.com

