

10 Things You Didn't Know About Business Process Management on System z

Dexter J. Doyle
Technical Professional
WebSphere zSoftware
doylejd@us.ibm.com

June 8, 2011

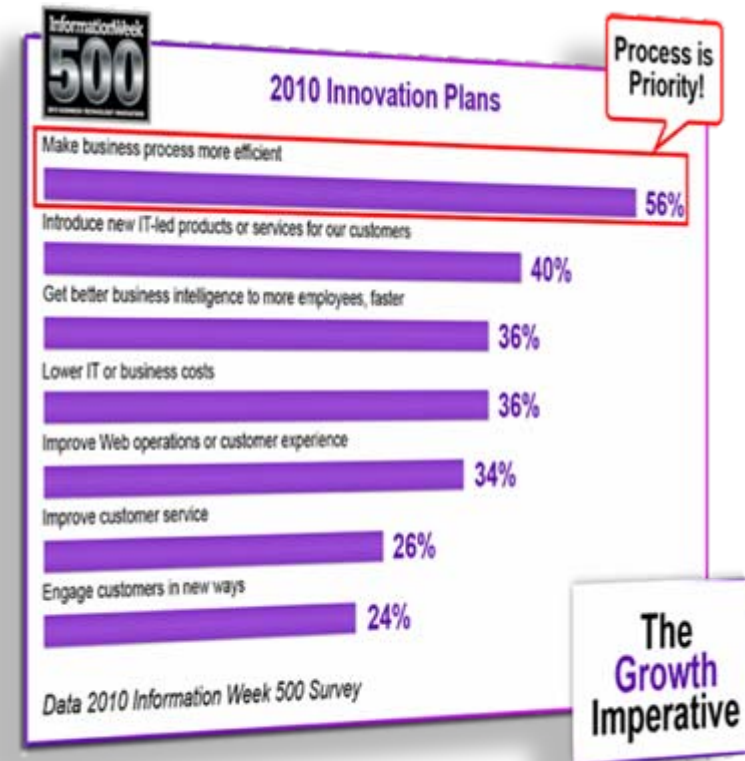


The Modern Enterprise is a Network of Complex Interactions ... Powered by Mainframe Assets

- ***70% of corporate data***
- ***75% of the business logic that corporations run on today***
- ***30 billion transactions/day valued at over \$1 trillion/week***
- ***213 million messages per day on z/OS in the banking industry alone***
- ***\$5 trillion of core System z applications with estimated replacement costs of \$20 trillion***

But Why BPM and Business Rules on System z?

- The market is clearly telling us that accelerating process improvement and efficiency is crucial
- Agile businesses have 45% higher ROI and 10% faster revenue growth¹
- System z is an integration platform, with system level awareness across the software stack enabling you to work smarter, providing:
 - Easier management with fewer components to administer & vertical dynamic scalability
 - Stringent security with reduced interception opportunity and integration of RACF
 - Highly available infrastructure with parallel sysplex enabled
 - Higher performance with no network time and no product-specific network protocol construction/deconstruction



Information Week: September 2010

So there are many benefits to deploying BPM and BRMS on System z, but how can you ...

- ... better **leverage** zEnterprise for BPM and BRMS deployments?
- ... incrementally **modernize** your enterprise to maximize agility in System z business applications?
- ... **unify** business process and rule management across systems and platforms for increased business agility, visibility, and consistency?

Let's explore 10 key reasons why this works so well ...

Unifies IT and LOB objectives across platforms

- Ensure Business-friendly tools simplify complex process and rule definition
- Graphical implementation for business processes enables engagement by all stakeholders
- Visibility of business rules to Business Users via a Web interface
- Reuse of process components and business rules across applications and platforms – System z and distributed
- Governance capabilities control rapid evolution of business process and rules



IBM Blueworks Live
 IBM WebSphere Lombardi Edition
 IBM WebSphere JRules

Leverage performance, robustness, and scalability

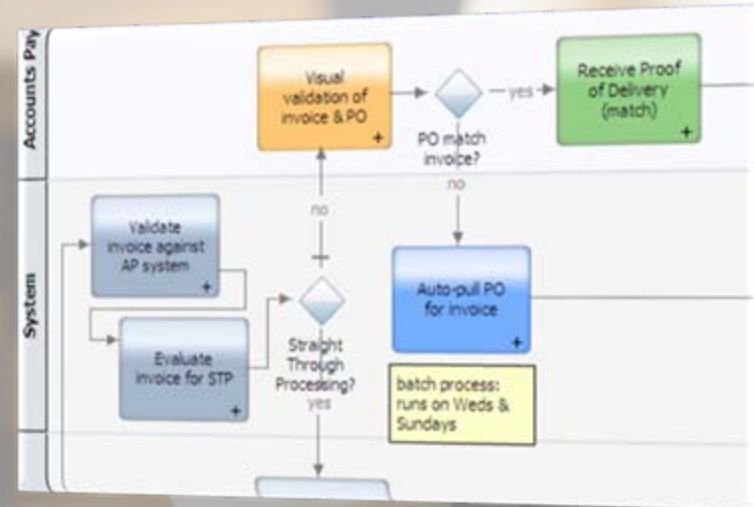
- Support for range of modernization needs, from point upgrades and incremental extensions to full application rewrites
- Native System z deployment leverages existing investment in zEnterprise
- Processes and decision services can be deployed independently
- Different roles can drive process and rules management
- Process and decision changes can have separate lifecycles and governance requirements



IBM WebSphere Process Server
IBM WebSphere Integration Developer
IBM WebSphere ILOG JRules

Leverage mission-critical applications and processes

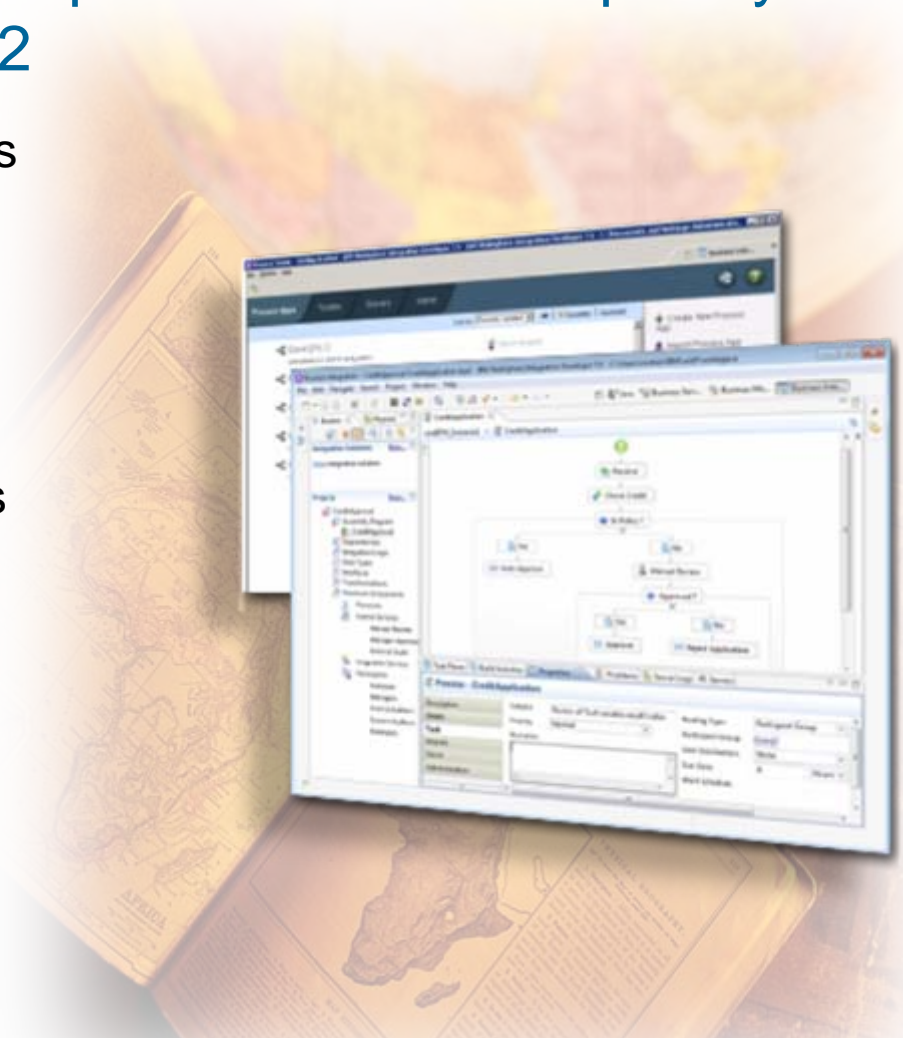
- Define and orchestrate the end-to-end process, combining automation with user interaction
- Enable consistent transaction processing in an SOA environment
- Process integrity to deliver the reliability, consistency, scalability, and predictability
- Linking, extending, and improving process flow through existing COBOL applications
- Providing integrated steps from one process to the next, as well as removing inefficiencies
- Tight integration with CICS, IMS, SAP – leveraging z/OS resource recovery services and two-phase commit for transaction coordination on z/OS



IBM WebSphere Process Server
IBM WebSphere Integration Developer

Leverage co-location on z/OS of processes that frequently interact with CICS, IMS, or DB2

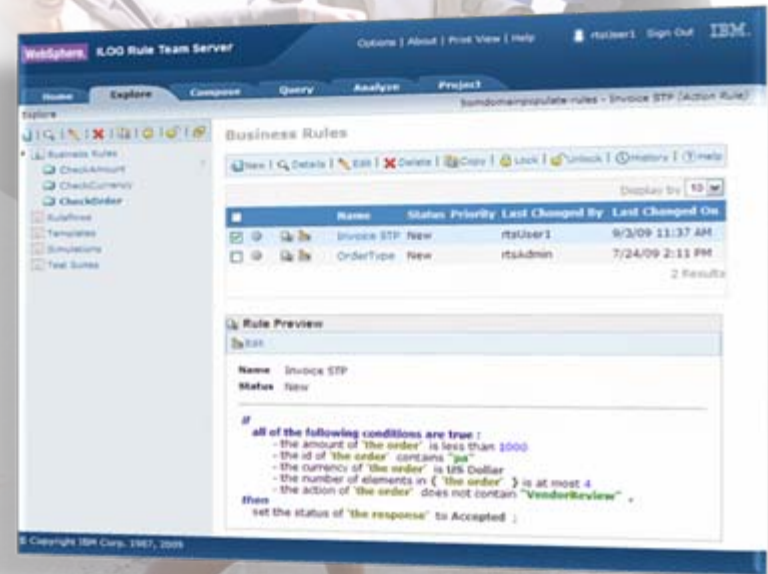
- Long-running work workflow processes with DB2 z/OS
- Straight-thru (integration-centric) processes with CICS, IMS, DB2
- New Web-based UI for business users front-ending zWPS and CICS
- High Availability, Global Operations, Disaster Recovery and Backup
- Significant workloads - 100 – 10,000 users



IBM WebSphere Process Server
IBM WebSphere Integration Developer

Modernize with business rules management that improves operational decisions

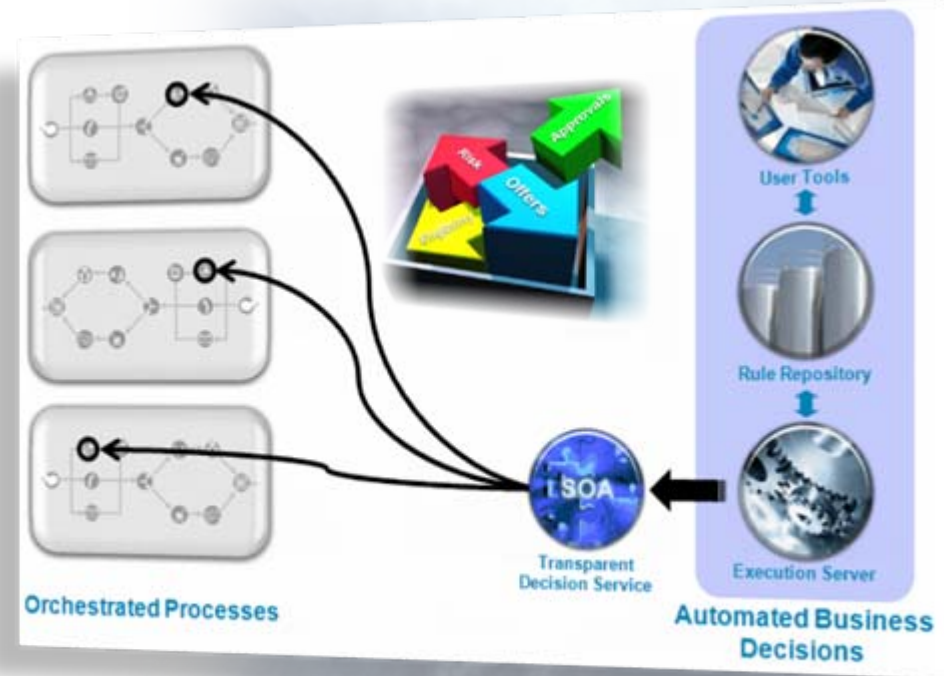
- Define and execute specific decision points in processes and applications
- Automate and improve decisions
- Rules management provides version/change control and a central repository for multiple rule deployments
- Rule testing and simulation ensures accuracy of changes prior to deployment
- Reuse of rules across applications and platforms
- Incremental rule modernization – applying technology and process to gain increased “decision making” agility



IBM WebSphere Decision Server
IBM WebSphere ILOG JRules

Dynamic Business Rules Management and a Managed Execution Environment

- High performance and scalable rule execution
- Add new behaviors - key COBOL business applications and minimize risk and disruption
- Improve Agility – author and reuse business decisions and rules across applications
- Automate business decisions – quick response to market and regulatory changes
- Rule services management & monitoring



Modernize and streamline business processes for efficiency

- Monitor metrics, business situations, and events in real-time
- User customizable dashboards to ensure targeted, relevant information
- Feed and correlate alerts with business event processing for enhanced pattern visibility
- Interact directly with processes in real-time
- Predict future values of KPIs based on historic and cyclic trends
- Trigger alerts when predicted values indicate a problem detection

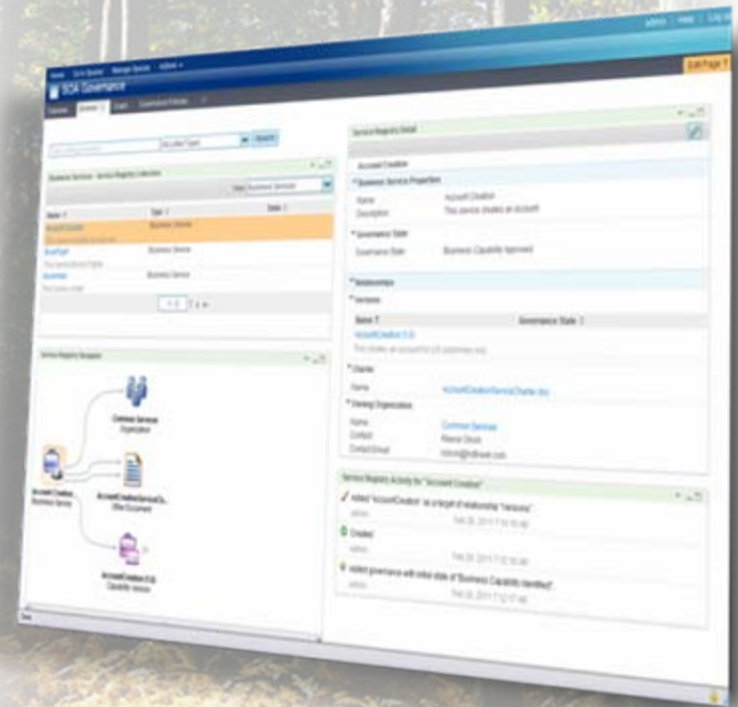


IBM Business Monitor
IBM WebSphere Business Events



Unify process, rule, and event assets for sharing and reuse

- Gain insight into SOA services and their consumption, policies and associated metadata in your enterprise
- Ensure awareness of available applications, services, and their consumers with associated metadata and documents throughout the organization
- Implement recommended practices and increase runtime agility enabling a policy driven SOA ensuring:
 - Consistent application of operational policies
 - Enforcement of governance lifecycle policies



IBM WebSphere Enterprise Service Bus Registry Edition
IBM WebSphere Service Registry and Repository

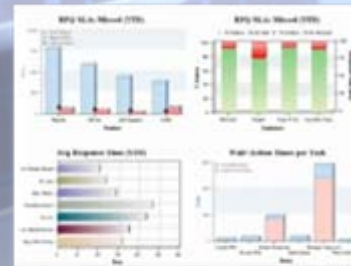
Modernize industry-specific applications and processes to accelerate and enhance BPM adoption

- Rich set of prebuilt, industry-specific assets to enhance delivery of standards-based industry solutions for banking, insurance, healthcare, manufacturing, and telecommunications
- Extensible assets to meet your unique industry-specific business needs, providing standards-based industry solutions for quick BPM adoption & implementation
- Libraries of assets and examples
- Out-of-the-box solution scenarios based on industry architectures and standards



Process Flows

Coach Flows



KPIs / Reports



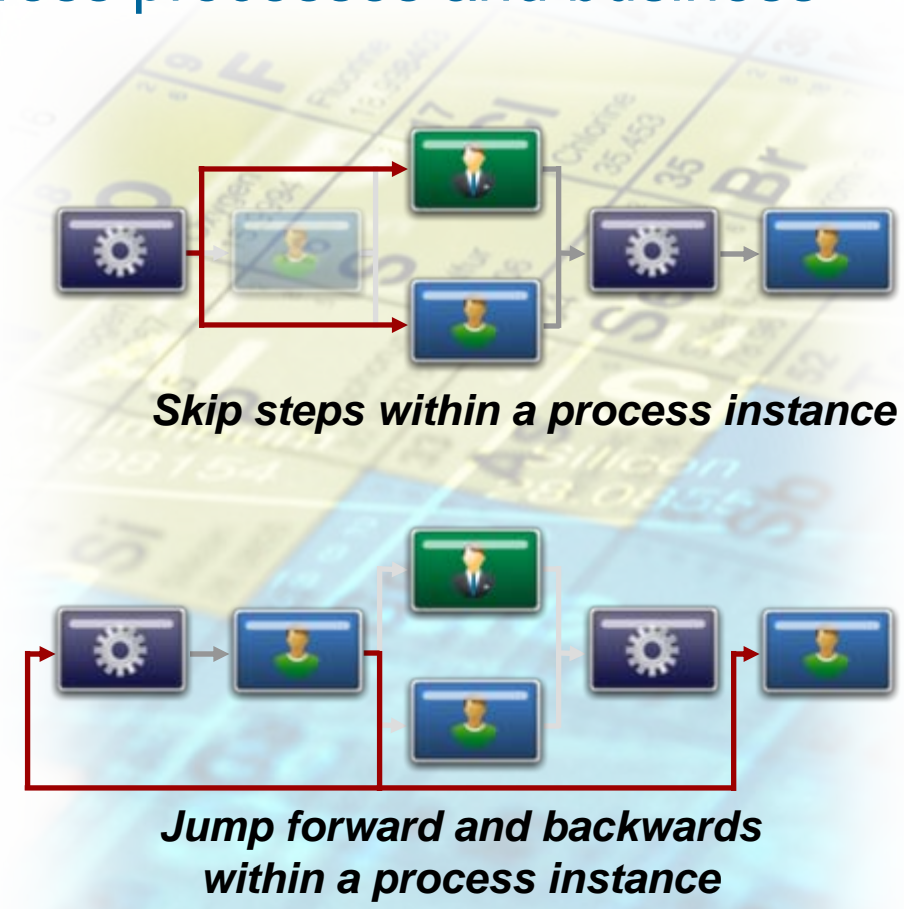
Integration Services

IBM Business Process Manager Industry Packs
IBM WebSphere Industry Content Packs



Adapt dynamically to change across processes and business rules

- Robust support for process owners to easily manage task assignments
- Respond to changing business needs with greater flexibility
- Dynamically assign roles based on runtime context
- Support for ad-hoc human collaboration based on personnel assignments
- Multi-level escalation mechanisms



IBM WebSphere Process Server
 IBM WebSphere Lombardi Edition
 IBM WebSphere ILOG JRules



Unify through powerfully simple process improvement and seamless deployment across distributed and zEnterprise platforms

- Empowers business users to take back their business by providing federated visibility across all process participants
- Designed to enable business-led change
- Simple enough to engage process participants, regardless of their role, yet powerful enough to scale as needed to support enterprise-wide transformation
- Unified BPM platform combines the simplicity of Lombardi Edition experience and the power & scalability of WebSphere Process Server
- Process Center and asset repository provides maximum collaboration & governance required to scale up your BPM program
- Single product with multiple entry point configurations and deployment options for companies & programs of all sizes.



IBM Business Process Manager

IBM Business Process Manager V7.5 for zLinux

Process End-Users
Process Owners



Business & IT Authors

Process Designer



Authors & Admins

IT Developers



Integration Designer

Process Center

Governance of Entire BPM Life Cycle

Shared Assets Versioned Assets Server Registry

BPM Repository

DB2 for z/OS Support



IBM BPM widgets work with IBM WebSphere Portal

Process Server

BPMN

Rules

Monitoring

BPEL

ESB

Out-of-box Process Portal

Configurable Business Space

Optional Microsoft Add-ons

Backward compatibility, easy migration from WLE & WPS

Customers Across Industries Successfully Improve Business Processes with IBM BPM and BRMS

Fortune 500
Bank



Modernized account opening, improving cross-sell and up-sell at account opening generating **\$15 millions** incremental revenue in 10 weeks

Top 5 US
Insurance



Modernized insurance underwriting process, improving straight-through processing (STP) rate from **17% to 75%**

US Federal
Agency



Modernized enrollment process and entitlement determination cutting enrollment approval from **10 days to 7 minutes**

IBM BPM and BRMS – Uniquely Qualified and Committed to System z

- **Unparalleled expertise** and investment
- **Trusted** thought leadership and guidance
- **Broadest, deepest** portfolio of fit-for-purpose offerings
- Leader in **Forrester Waves** for BPMS, BRMS, and CIS
- Leader in **Gartner Magic Quadrant** for BPMS & BRMS
- **Uniquely committed to zEnterprise**



Next Steps in Harnessing BPM and BRMS Value on System z

- Visit our Web pages for our redbooks and white papers on Business Process Management and Business Rule Management
- Conduct a one-day modernization workshop
- Conduct a trial
- Check out these key Web sites for more information:
 - <http://ibm.com/bpm>
 - <http://ibm.com/brms>
- IBM BPM and BRMS are well-integrated across the System z platform and applications, such as CICS, IMS, DB2, and MQ