



An Introduction to WebSphere Business Events for System z





We are living in a new landscape

Smarter Planet

instrumented
interconnected
intelligent

people
companies, institutions, industries
man-made systems
nature's systems





We face the challenge of accelerating market shifts

- **Rising consumer expectations compel improvements in speed and personalization**
- **Rapid swings in economic and commodity markets highlight lack of adaptability**
- **Lower barriers to entry in a digital, flat world, enable fast and easy access by new competitors**

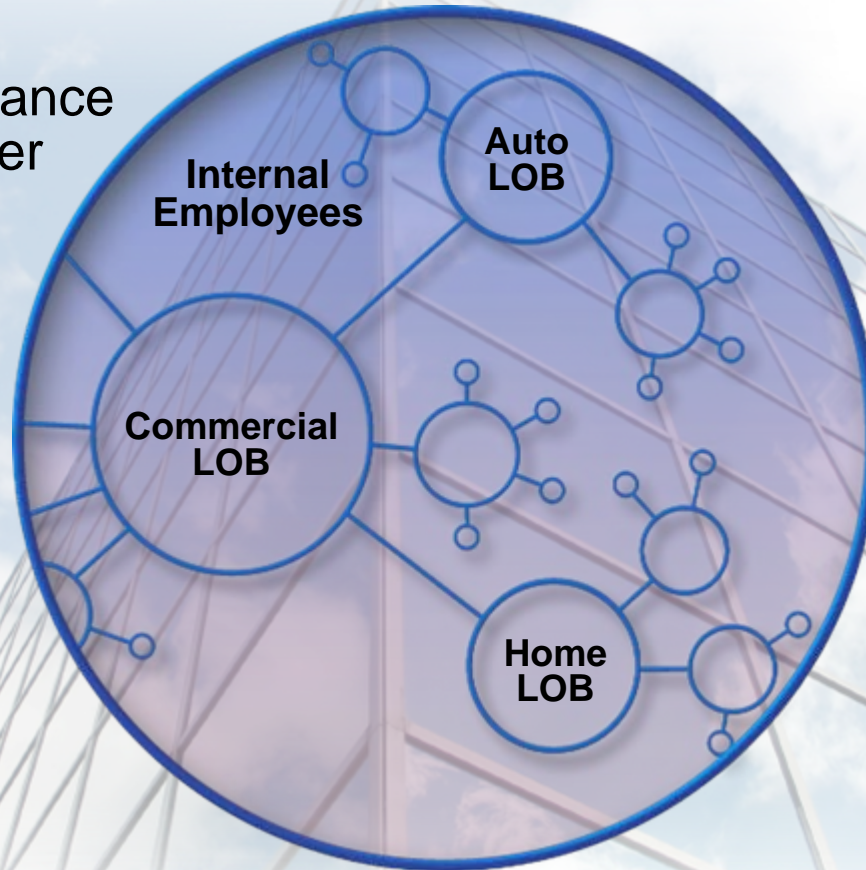
How do businesses evolve
to Work Smarter?





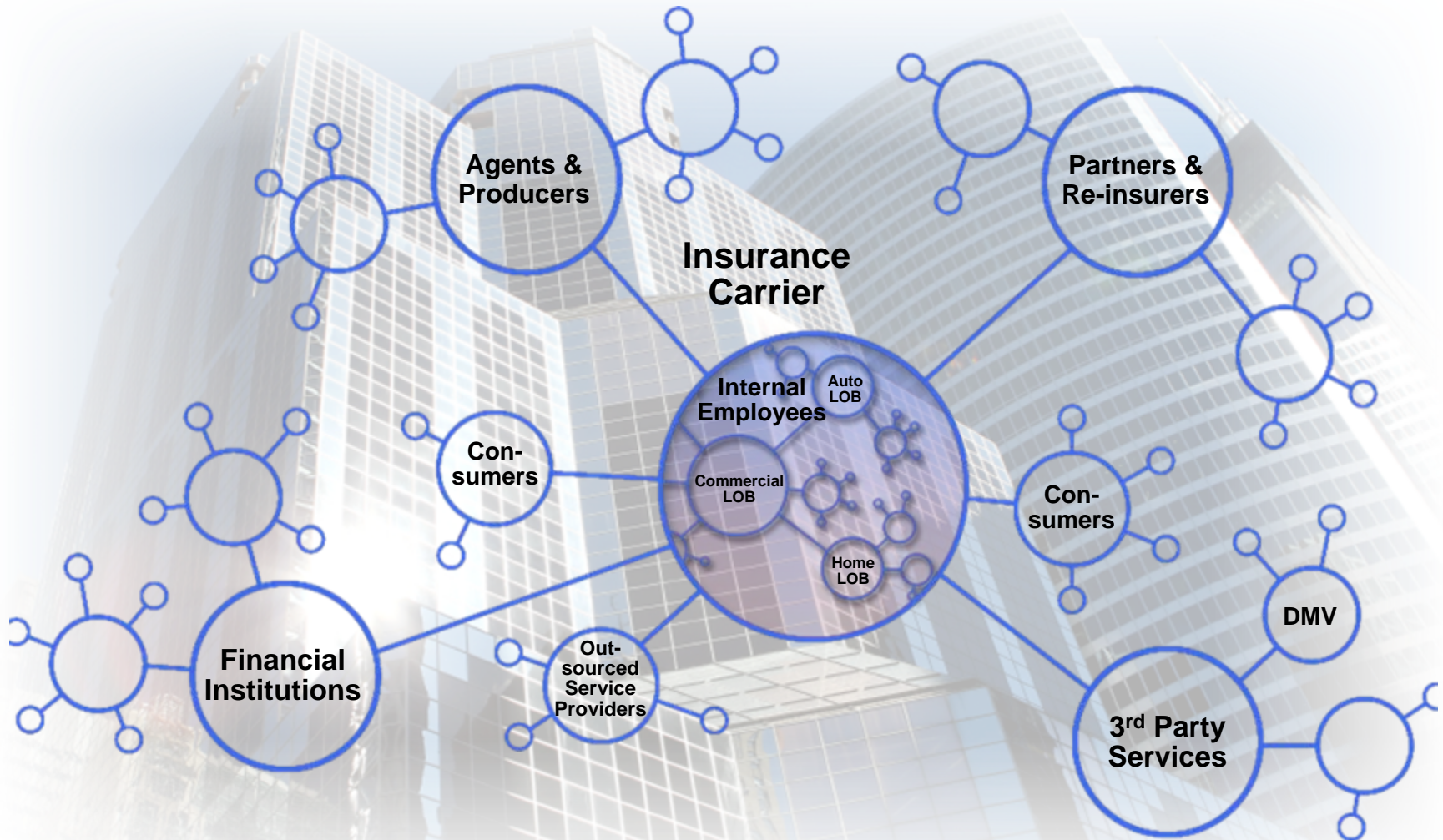
Our business networks

Insurance
Carrier





Are becoming broader...and much more dynamic





Organizations are not equipped to handle the dynamism

Ineffective inventory management leads to lost sales

Poor response time leads to unhappy customers

Exceptions waste resources and increase costs



Supply chain disruptions increase costs

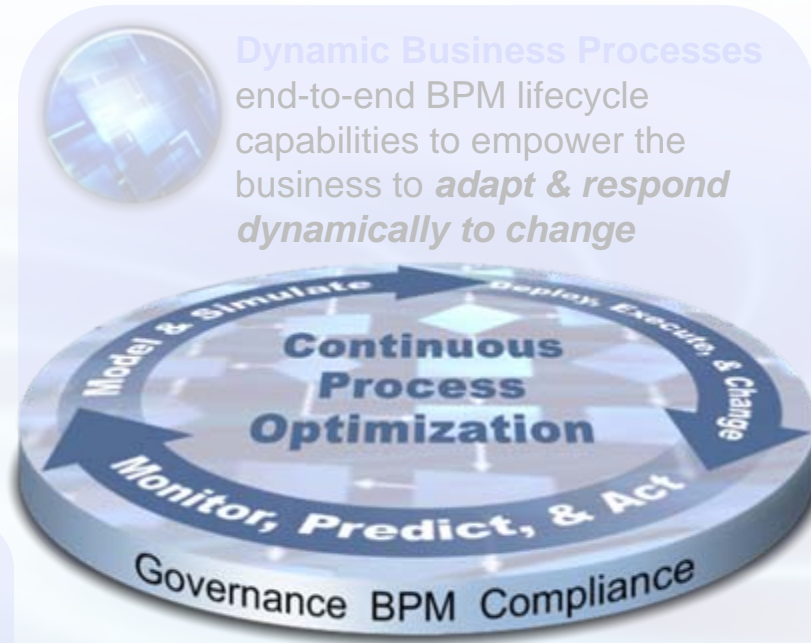
Poor workload management leads to dissatisfied employees

Paper-intensive and manual processes impede visibility

85% of CEOs Require *More Insight* into their Businesses



Transform Insight into Action with business event processing



Dynamic Business Processes
end-to-end BPM lifecycle capabilities to empower the business to *adapt & respond dynamically to change*



Discover & Design
by collaborating to capture, model, and analyze key processes to *link strategy to process execution.*



Transform Insight into Action by monitoring and analyzing business processes and events for *effective decisions.*



Process Automation to *increase operating efficiency* and *optimize costs* by streamlining business processes.



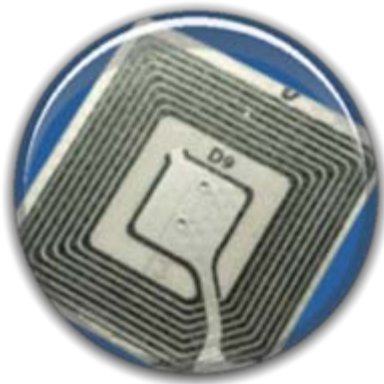
Additional knowledge and insights are contained in business events all around us

What is a Business Event?

An action that has occurred, or the absence of it occurring, which has relevance to the business

Large companies can experience up to **800 Billion** business events daily

Nearly **4 Trillion** RFID events are emitted each day

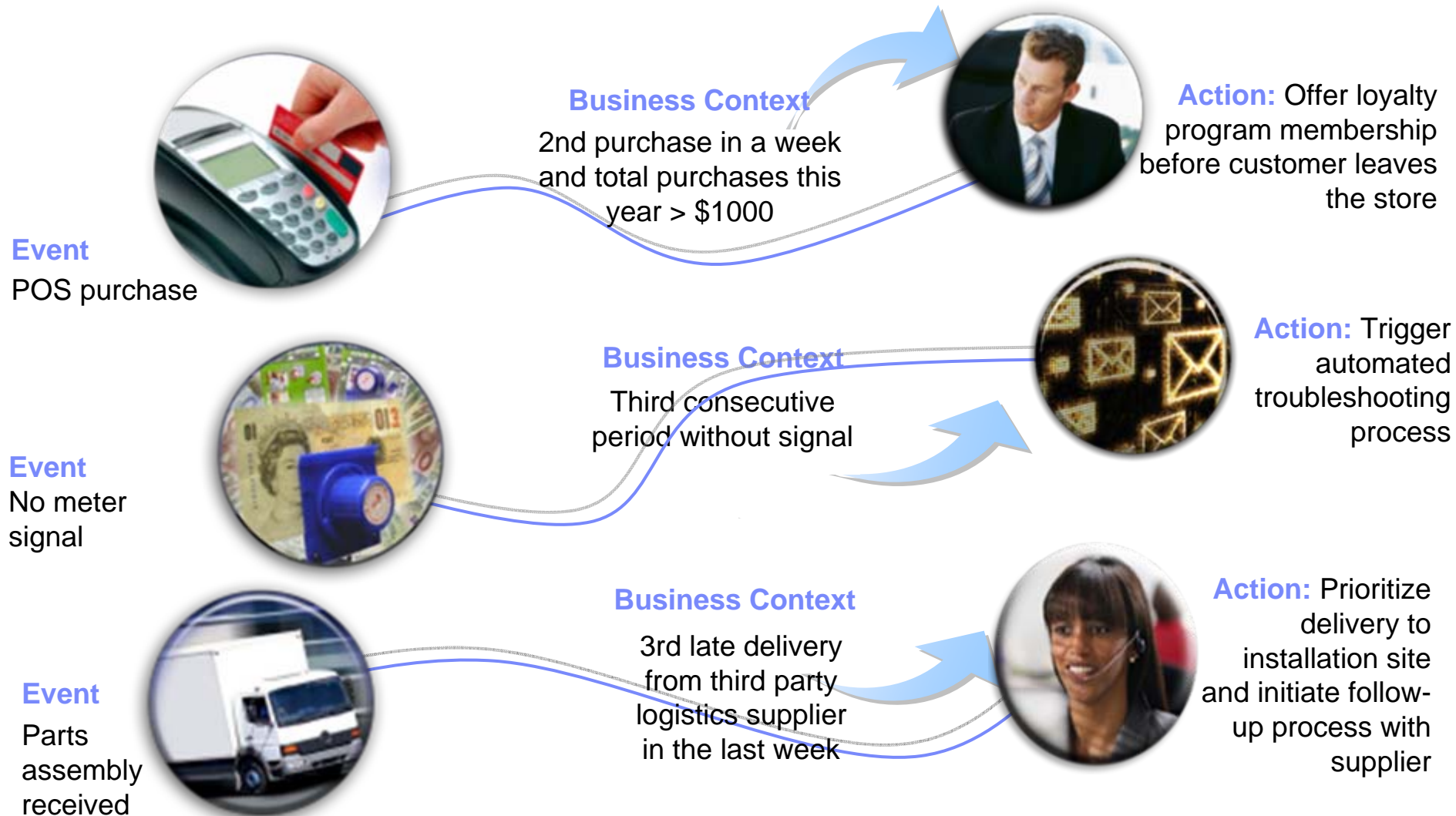


Over **30 Billion** CICS transactions per day





Business events in the right business context enable proactive management





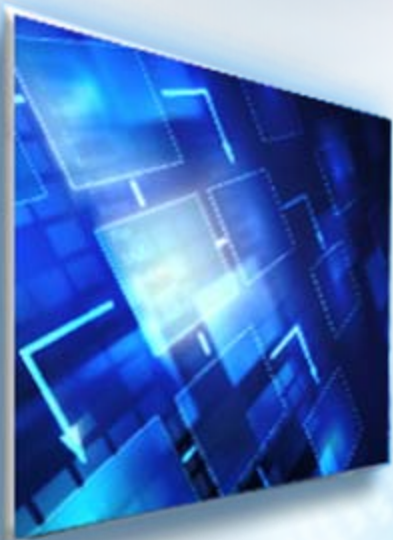
Correlate business events over any source, over any time frame *with business event processing (BEP)*





Business event processing delivered with IBM WebSphere Business Events

WebSphere Business Events



Complex Event Processing



Business User Interface

The Convergence of Power and Ease of Use



Bridge the gap between business and IT

WBE Puts Power in the Hands of the Business User...

- Define business situations and responses
- All tasks performed via intuitive GUI

...Through Collaboration with IT, Allowing IT to Manage Resources

- Defines available events and properties
- Provides connectivity to event sources

Condition Block



Event Interaction Block



 Point and click from drop-down lists

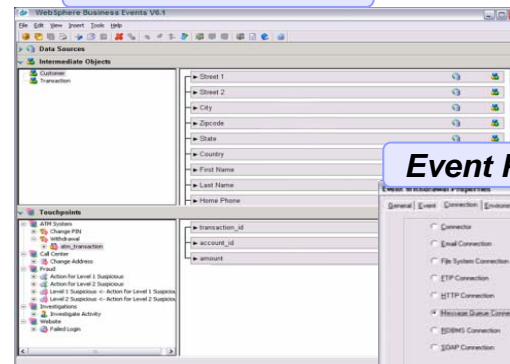


Business User

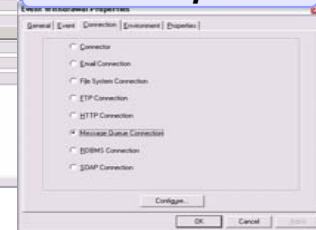


IT Developer

Event Definitions



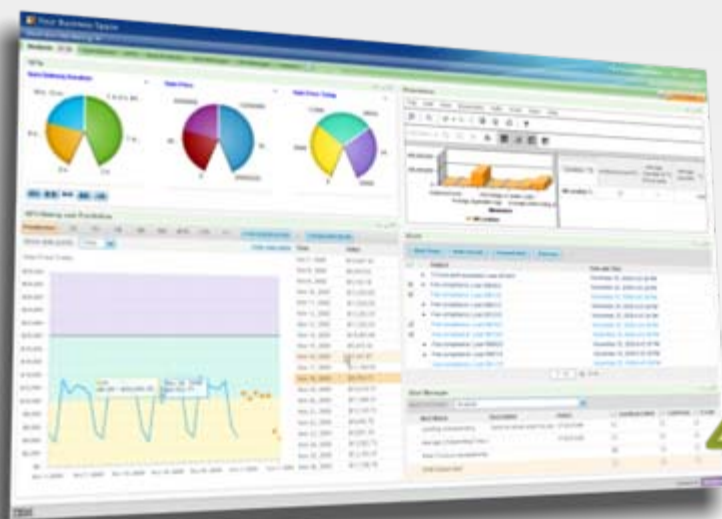
Event Properties



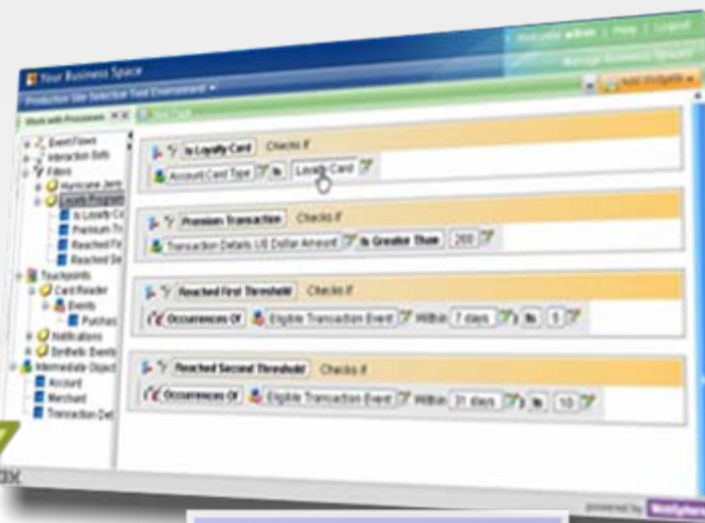


Evaluate and correlate

BAM and BEP together provide insight to respond to opportunities and threats



Business Activity Monitoring



Business Event Processing

Gain faster insight from pattern detection and alerts on KPIs/KAls in WebSphere Business Monitor and WebSphere Business Events



Manage processes in a unified environment

Role-based business spaces



Business Users

Get started quickly with out of the box templates

Collaborate, take action proactively

Empower Users

Business

IT



Business Leader



Process Owner



Business Analyst



IT Architect



IT Leader



IT Developer



Seize opportunities and mitigate risk

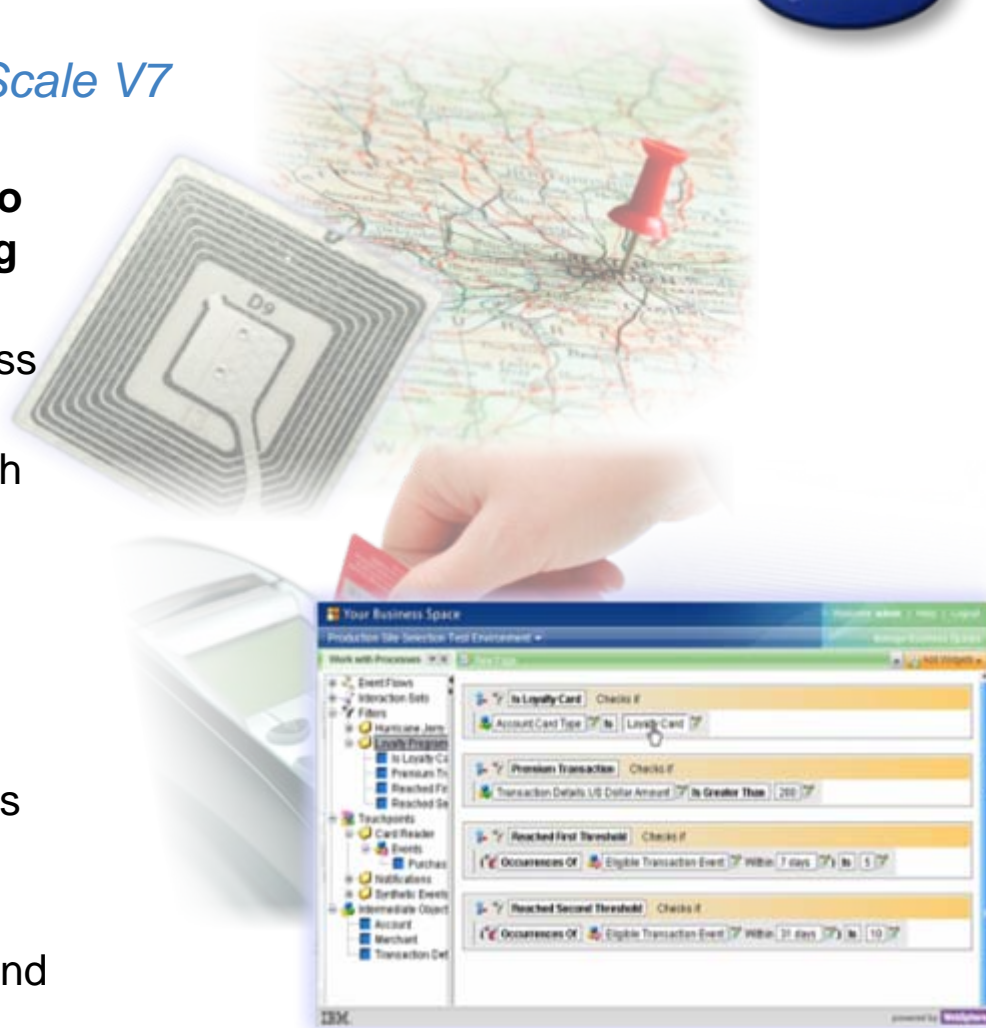
WebSphere Business Events V7

WebSphere Business Events eXtreme Scale V7

Enhanced!

- **Provide business user authoring tools to define and manage the event processing logic using business terms**
 - Now available via role-based business spaces
 - Achieve greater time to value through event capture, reply, and testing capabilities

- **Manage events from a wide variety of sources**
 - Business Rule Management Systems
 - IMS, CICS applications
 - Industry applications (i.e., Chemical and Petroleum, Healthcare, Retail, and Energy & Utilities)



Benefits of CICS with WBE

Sense and respond to actionable situations at the right time

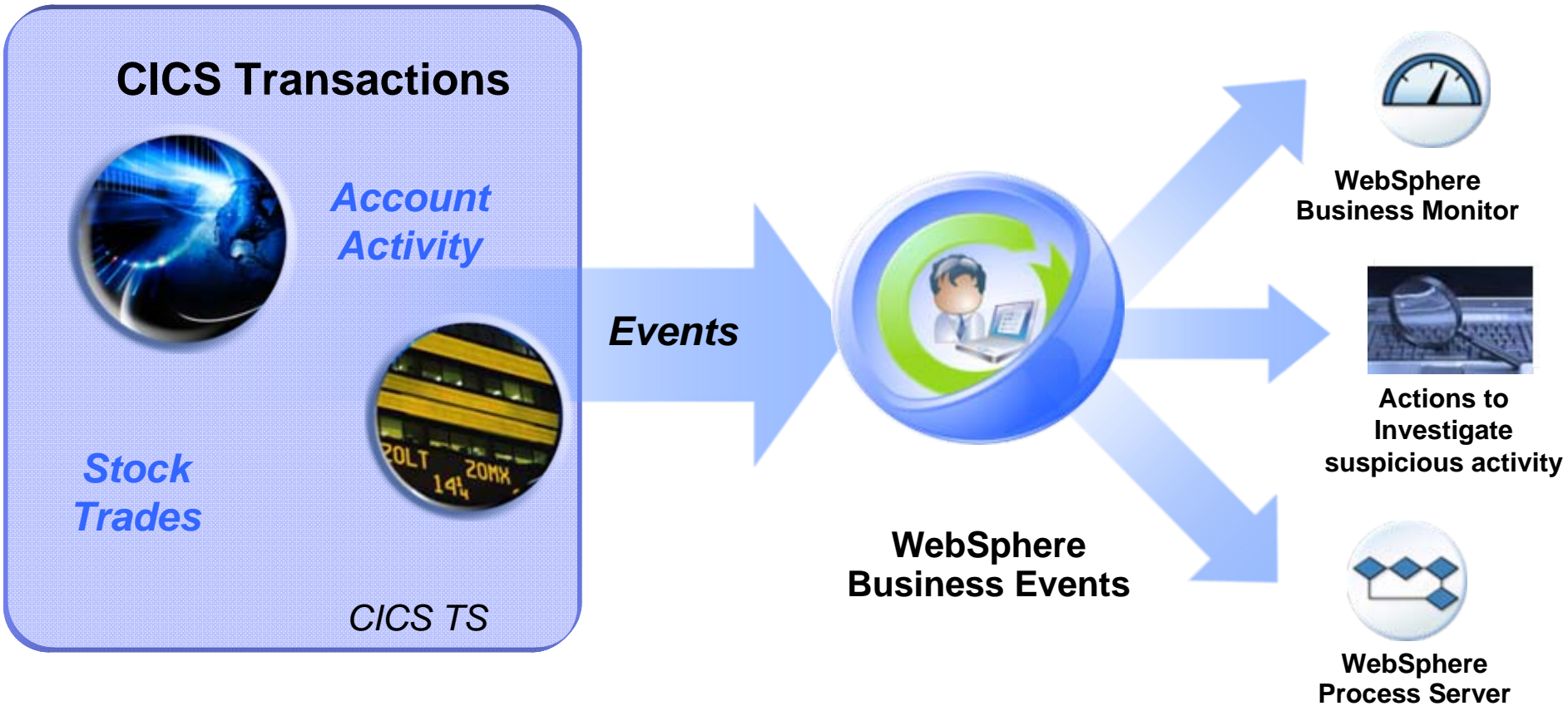
- **Opens the door with CICS and IMS to the Enterprise**
 - Enhances insight gained from CICS transactions to processes in the enterprise
 - Enables the initiation of follow-on processing based on actionable patterns of transactions
 - Increases efficiency and effectiveness providing faster time to value
- **Extends value of System z and CICS and IMS applications**
 - Unleashes information in existing systems
 - Reduces mission critical application disruption
 - Provides means for coordinating information sharing across operational systems





WBE Integration with CICS Transaction Server

Capture mainframe event sources for smarter business outcomes

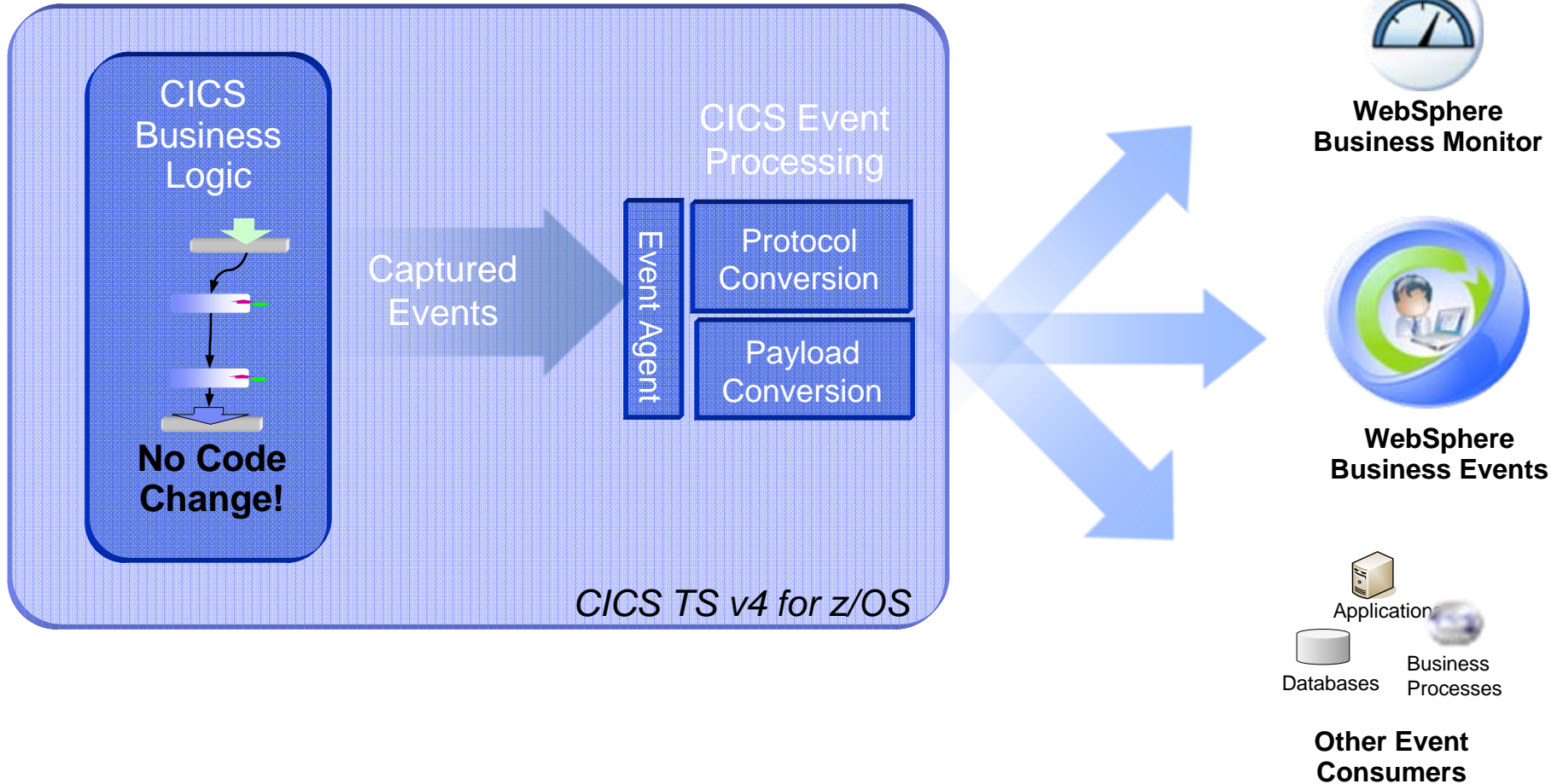


Providing Real-Time Detection and Compliance



WBE integration with CICS Transaction Server

What's under the hood





Agile insurance sales Transform Insight into Action

A large property and casualty insurance company increases online customer conversion



Client Pains

- Difficult to convert customers through online channel
- Unable to react to prospect behavior online

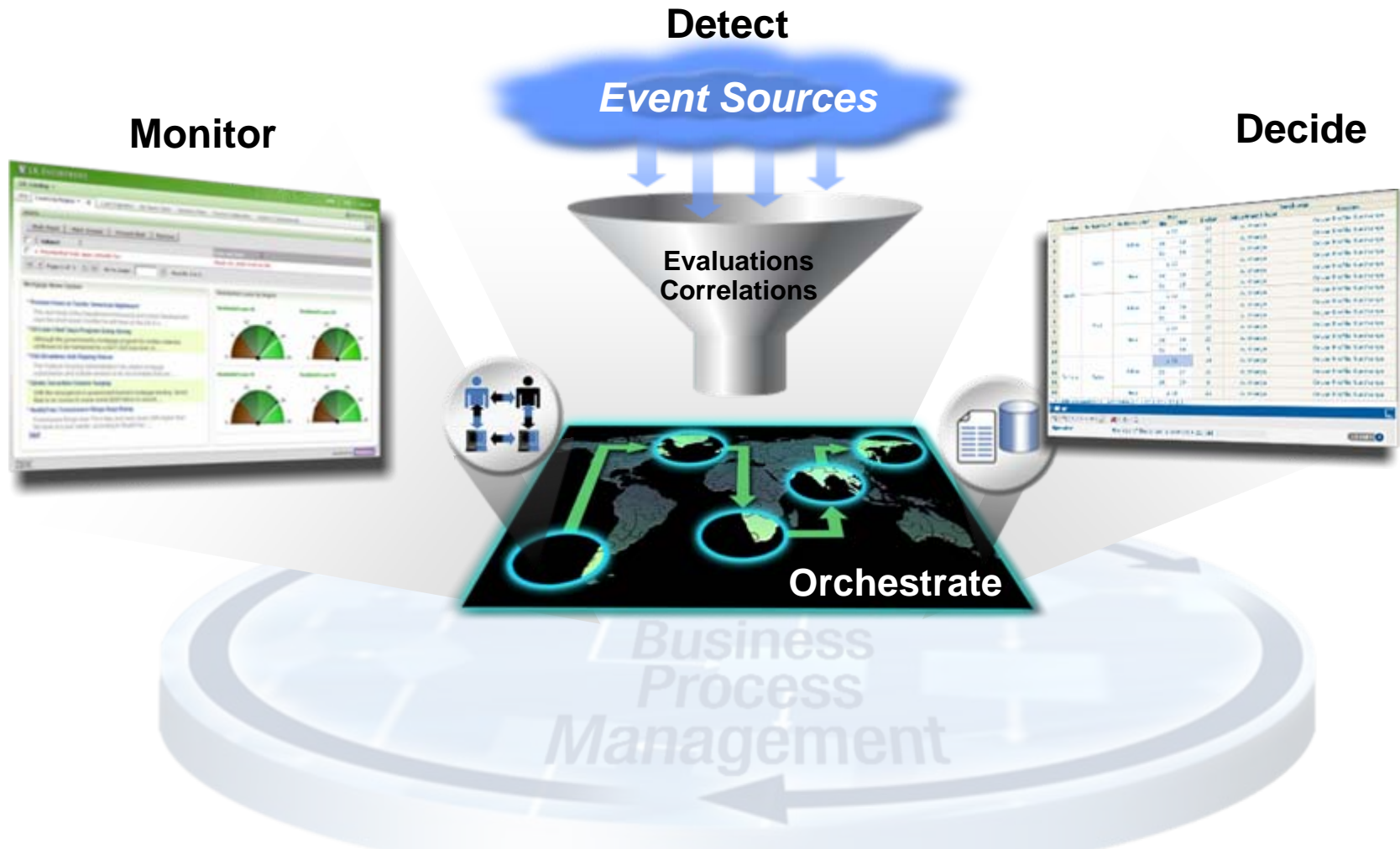
Real Results

- **Increased** customer conversions by reacting to abandoned online shopping carts
- Exceeded 1st year ROI estimate in **1 month**



Extend action with better decisions

Leveraging BEP, BAM and BRMS



Know What's Happening, When to Act and What to Do



Accelerate your BPM success with industry content

Start quickly, deploy faster, and reduce costs and risk



- **Speed deployment with pre-built industry assets, and new Industry Solution Scenarios**
- **Reduce risk, increase consistency and reuse across departments with industry-standards based assets**



IBM WebSphere BPM V7 System z customers

Solution development and deployments

Tools

BPM BlueWorks

Cloud-based process and strategy tools
For Business Leaders

WebSphere ...

... Business Compass

For Business Analysts
Publishing for review and documentation

... Business Modeler

For Business Analysts
Direct Deployment for simple scenarios
Interactive Process Design with WID

... Business Monitor

For Business Analysts, Business Users
Real-time monitoring and notification
Define KPIs and predictive KPIs

Servers on z/OS

WebSphere ...

... Business Events

... Business Services Fabric

... Service Registry and Repository

... Process Server

... Adapter for SAP

... Industry Content Packs

related offerings:

WebSphere ...

... iLog jRules

... Transformation Extender

... Message Broker

... ESB

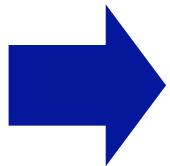
... MQ



What Can BPM Do for Me?

Companies are using BPM to provide a variety of benefits

- ✓ Empower business users
- ✓ Provide actionable insights
- ✓ Improve business agility
- ✓ Reduce costs
- ✓ Enhance collaboration
- ✓ End-to-end process visibility
- ✓ Boost worker productivity
- ✓ Improve customer service



BPM Aligns Business and IT
to your *Business Processes*
and your *Changing Business*
Needs





Get started and embrace your dynamic business network today



- Download additional information from the [IBM Website](#) including whitepapers and demos
- Identify and prioritize projects with the [IBM BPM Business Value Analyzer](#)
- Contact IBM for a [Business Process Improvement Workshop](#) for:



Impact 2010 Highlights

Impact 2010 - The Premier Conference for Business and IT Leaders

Discover new innovative ways to work smarter and achieve business agility now. Impact 2010 provides a unique setting to bring company executives and technologists together at a single event providing a unique opportunity for them to discover how to align business objectives with IT, interact with technology and business leaders and experts from around the world and ultimately optimize their business performance and results.

A new Business Program that will focus on:

- **optimizing business processes**
- **improving decision management**
- **empowering the changing workforce, and globalization**

An enhanced Smart SOA and BPM Technology Program:

- **Dedicated with tailored workshops and hands on labs**

A bigger focus on your industry!

- **300+ industry leading experts on site**

A new Interactive Symposium

- **Bringing LOB and IT together in consultative sessions**

A new Product Technology Center offering:

- **Open labs, tech zones, and product demos**

A new and improved Track structure with:

- **200+ client speakers, 50 Birds of a Feather sessions, & free certification testing**

A state-of-the art Solution Showcase Center!



Join us in Las Vegas
The Venetian Hotel
May 2 to 7, 2010

www.ibm.com/impact



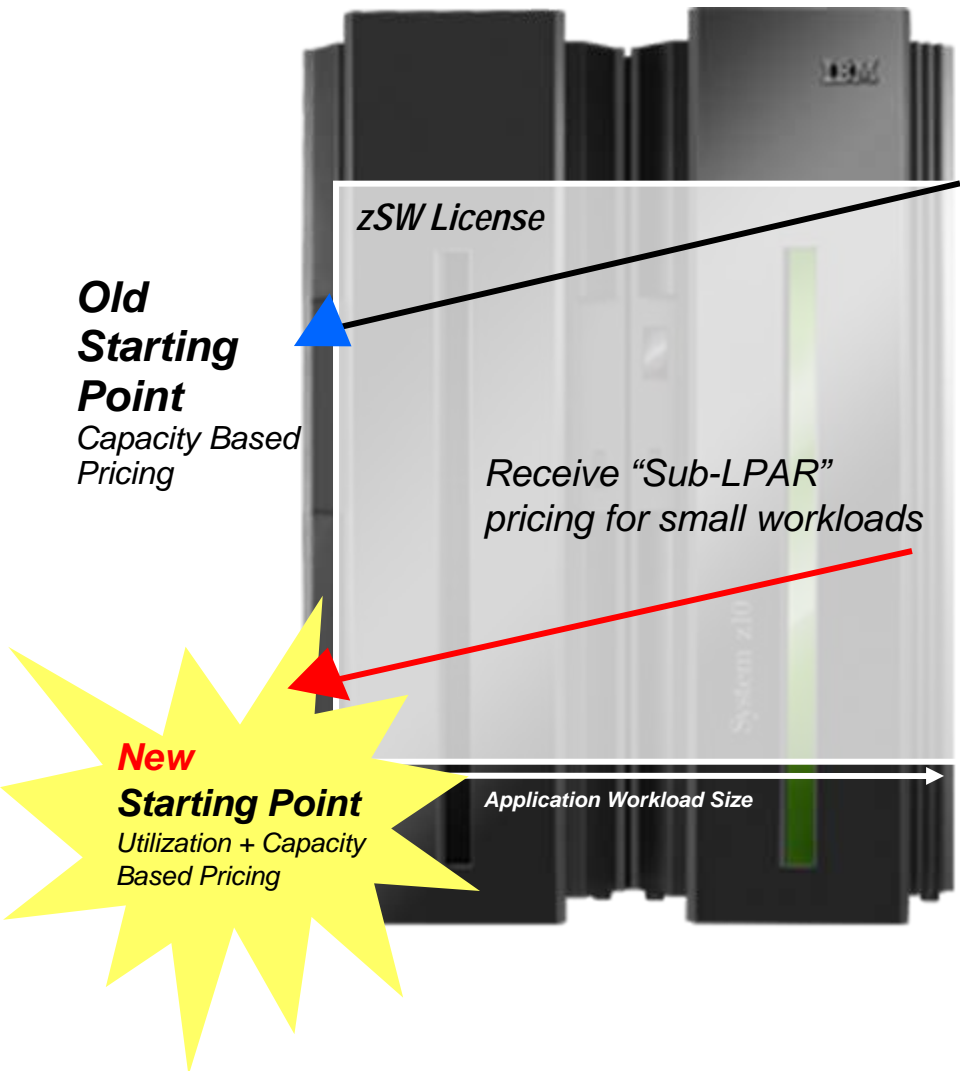
Let's Build a Smarter Planet on System z





Getting started sub-capacity pricing

Helping to make it easier to deploy new projects on z/OS software



- ✓ **Help customers start their projects**
- ✓ **Improve alignment between software use and software charges**
- ✓ **Enable greater flexibility with software licensing**
- ✓ **Change LPAR capacity without changing software charges**
- ✓ **Improve price / performance**