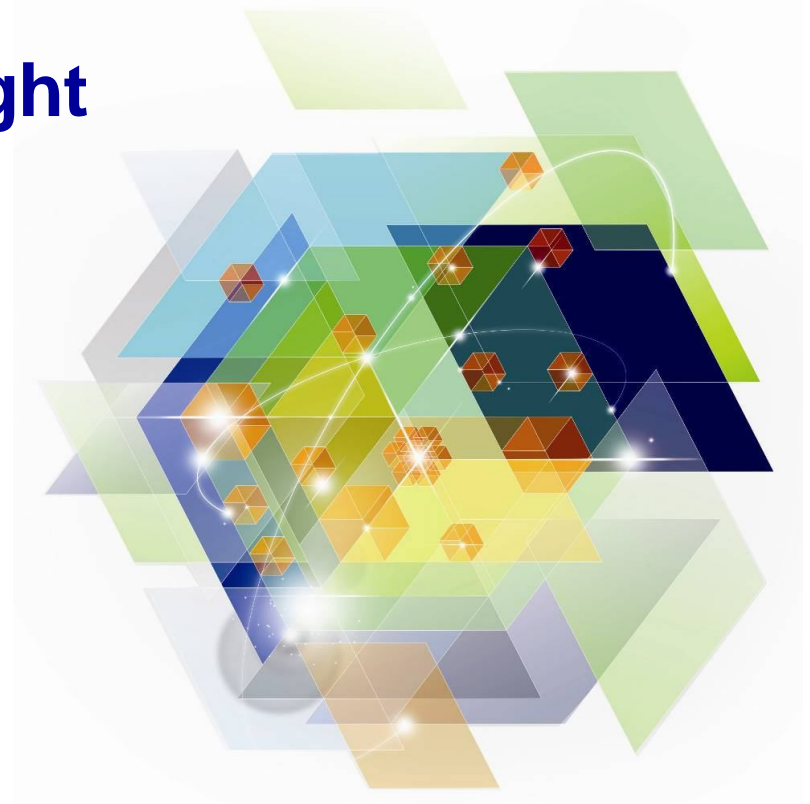




## Leveraging System z to Turn Information Into Insight

Steve Mink  
Sr. Manager, IM Mainframe  
Strategy & Marketing

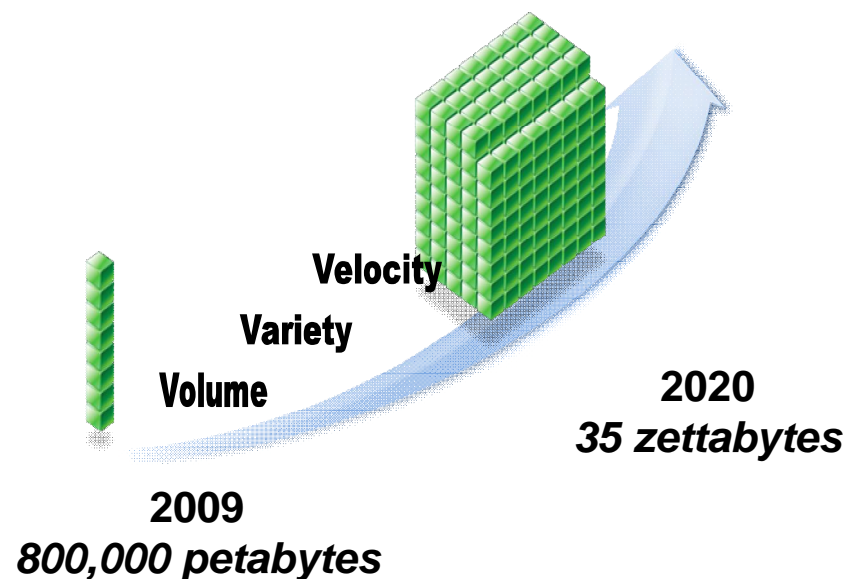


# Information is at the Center Of a New Wave of Opportunity...

... And Organizations Need  
Deeper Insights

# 44x

as much Data and Content  
Over Coming Decade



## 1 in 3

Business leaders frequently  
make decisions based on  
information they don't trust, or  
don't have

## 1 in 2

Business leaders say they don't  
have access to the information  
they need to do their jobs

## 83%

of CIOs cited "Business  
intelligence and analytics" as  
part of their visionary plans  
to enhance competitiveness

## 35%

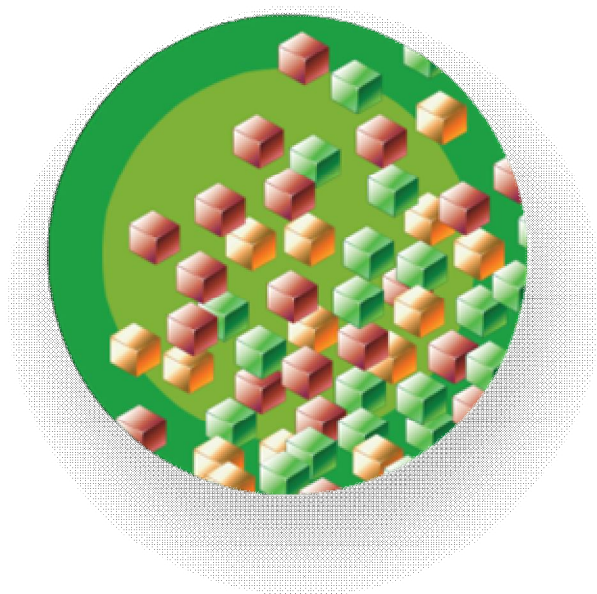
of businesses will look to  
replace their current warehouse  
with a pre-integrated  
Warehouse solution in the next  
3 years; only 14% have today

Sources:

- The Guardian, May 2010
- IBM Institute for Business Value, 2009
- IBM CIO Study 2010
- TDWI: Next Generation Data Warehouse Platforms Q4 2009

# There is a Gap Between Information and Outcomes

## Information Explosion



*How do I align my information with my business?*

*How do I make the right information available when and where it's needed?*

*How do I support better decision making throughout my organization?*

## Optimized Outcomes



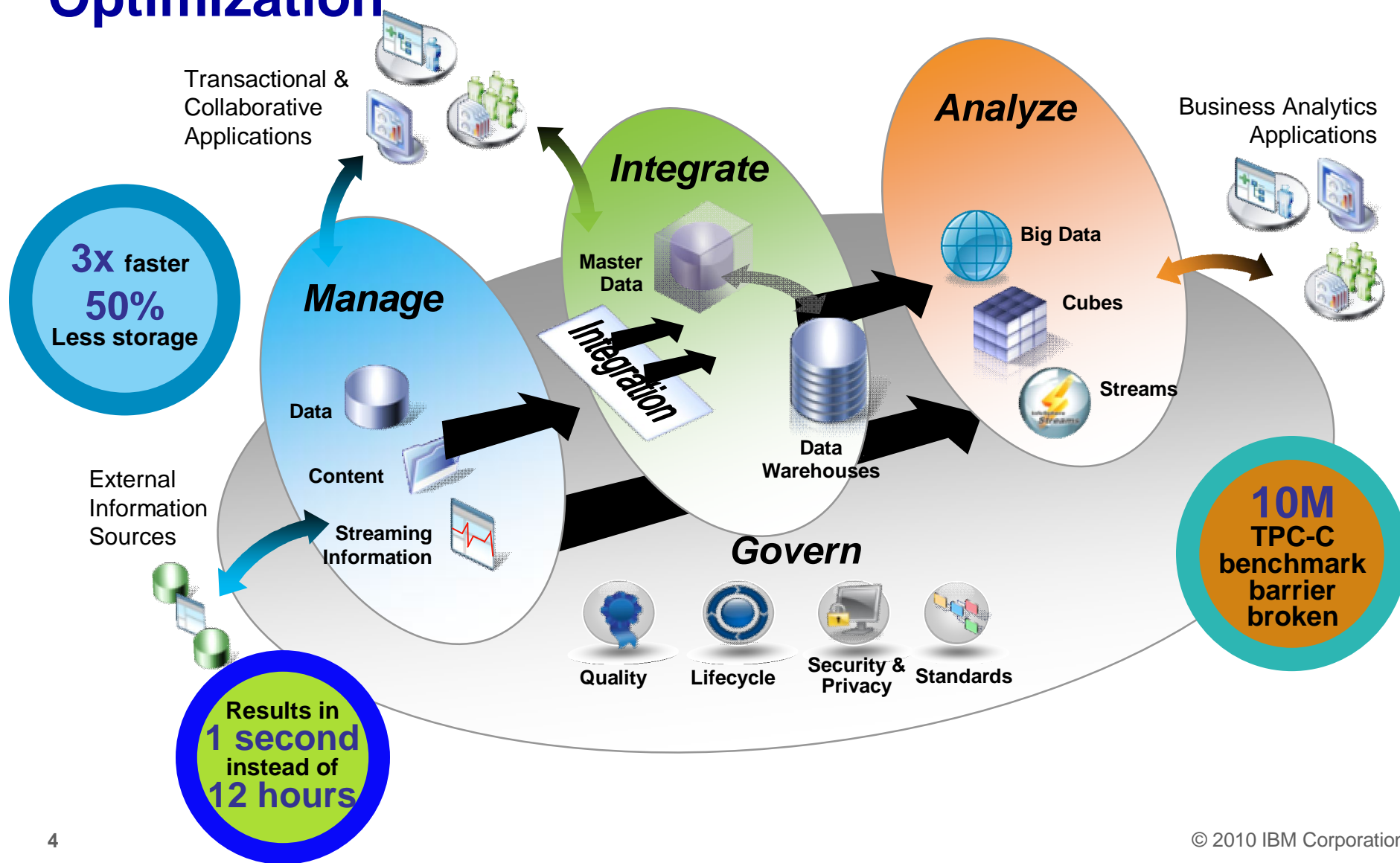
**Customer Insight**

**Fraud Detection**

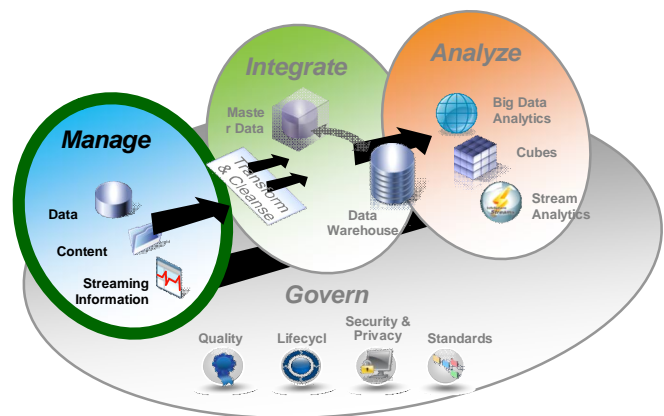
**Supply Chain Management**

**Human Capital Management**

# Foundation for Business Analytics and Optimization



# Managing Information



## Data Management

- Capabilities for managing structured information
- Leverage existing IT investments across a heterogeneous landscape
- Flexibility to adapt to changing business needs
- Lower total cost of ownership

## Key Capabilities

Clustering

Data compression

Autonomic

In memory DB

Java Optimizations

SQL skins

Workload Optimization

XML

### Products

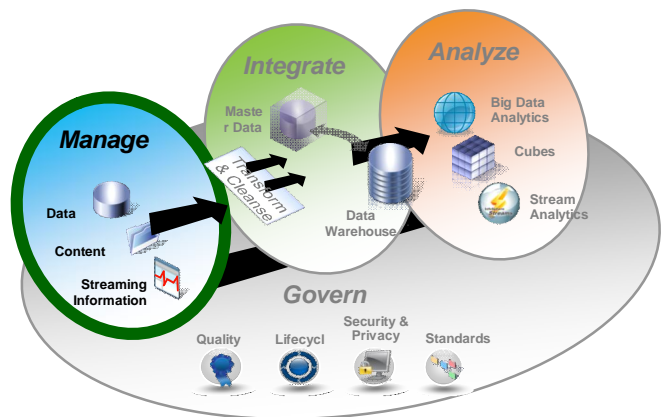
DB2

Informix

Solid DB

IMS

# Managing Information



## Enterprise Content Management

- Manage unstructured information
- Integrated, open environment
- Cross-functional capabilities useable across set of shared services
- Unified platform for content, process and compliance

## Key Capabilities



Document Imaging and Capture

Social Content Management

Advanced Case Management

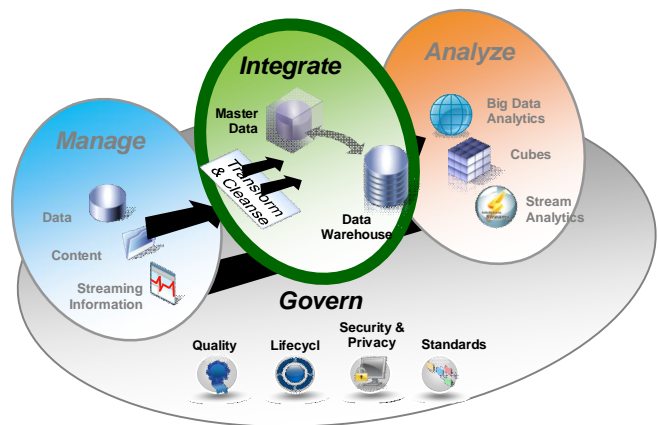
Content Analytics

Information Lifecycle Governance

 <b>FILENET</b> Content & business process management 2006	 <b>Datacap</b> <small>for Demanding Capture</small> Data & document capture 2010
-----------------------------------------------------------------------------------------------------------------------------------------------------------	-------------------------------------------------------------------------------------------------------------------------------------------------------------------------------------



# Integration



## Data Warehouse

- Deal with TB and PB of data
- Reduced time to value, days not weeks
- Perform data mining without copying data
- Work with analytical and transactions data in real time.

## Key Capabilities

Data mining & visualization

Embedded data movement and transformation

Unstructured Data Analysis

Extreme Workload Management

Data models & sample reports

Integrated analytics systems

Mashups

Real time analytics

Industry models

Clinical analytics

Modeling & design tools

Hadoop

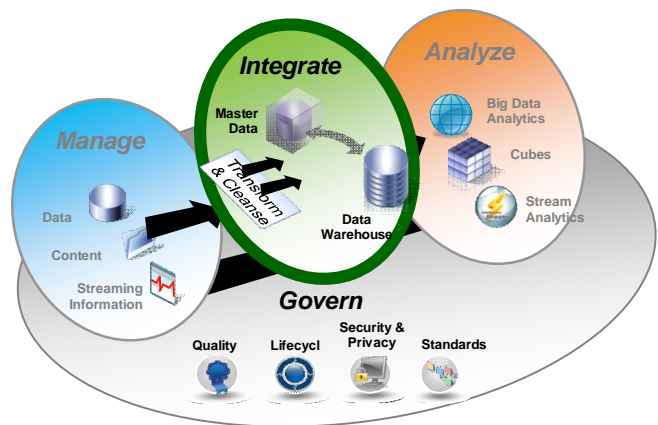
### Products

InfoSphere Data Warehouse



Data Warehouse Appliances  
2010

# Integration



## Information Integration

- Integrating and transform data and content to deliver authoritative, consistent, timely and complete information

## Key Capabilities

Data Discovery  
 Data Extraction,  
 Transformation and  
 Loading  
 Data Modeling

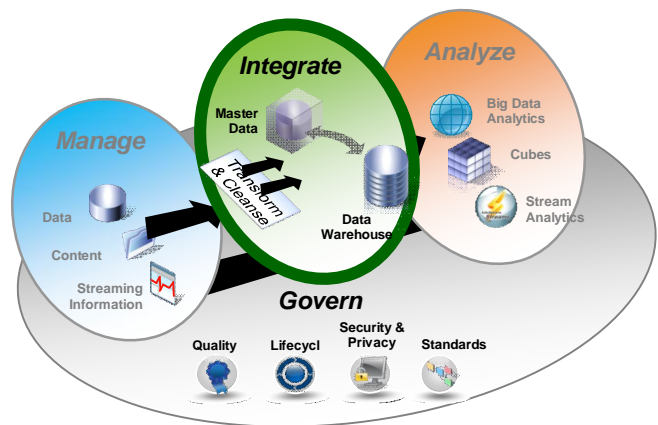
Data Profiling  
 Data Quality  
 Metadata Management

### Products

InfoSphere Information Server  
 Change Data Capture  
 Replication



# Integration



## Master Data Management

Create common data about customers, suppliers, partners, products, materials, accounts and other critical entities

### Key Capabilities

Account

Customer

Product information

Asset track and trace

Entity Resolution & Analysis

Name Recognition

Healthcare Information

Exchange

Location

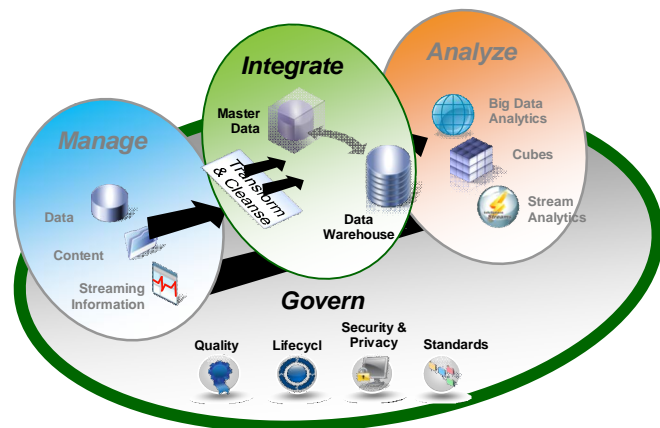
#### Products

InfoSphere MDM

Initiate Exchange

Entity Analytics

# Information Governance



## Information Governance, Risk, and Compliance

Delivers complete, consistent and accurate information that decision-makers trust to improve business performance

### Capabilities

Data Discovery

Data Encryption

Data Growth Management

Data Masking

Database Activity Monitoring

Test Data Management

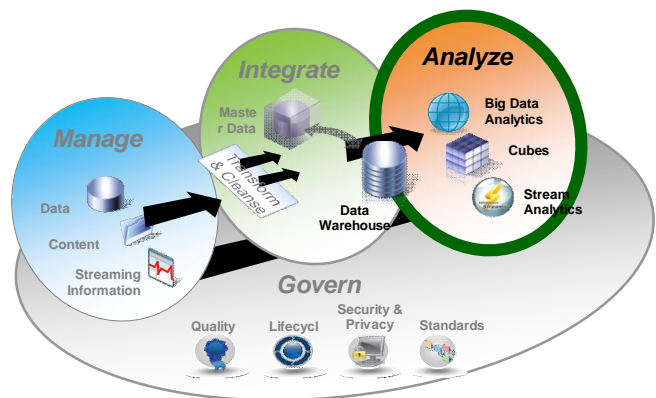
#### Products

Optim

Guardium

Infosphere Discovery

# Business Analytics



## Business Analytics

Delivers complete, consistent and accurate information that decision-makers trust to improve business performance

## Capabilities

Business Intelligence

Financial Performance & Strategy Management

Analytic Applications

Predictive & Advanced analytics

Governance Risk & Compliance

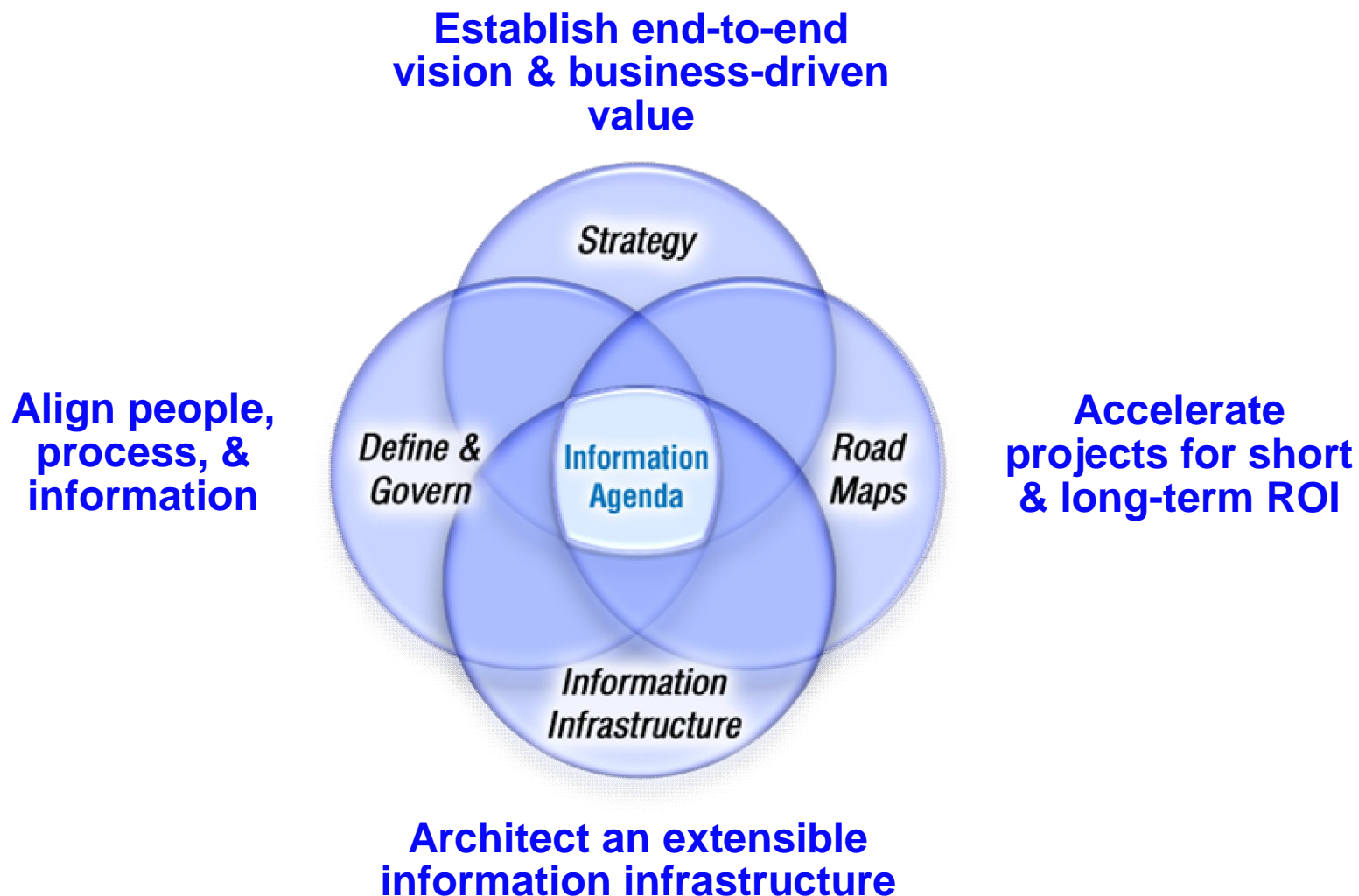
Business intelligence & performance management  
2008

Predictive analytics  
2009

Governance, compliance, risk management  
2010

Financial governance  
2010

# The IBM Information Agenda Approach

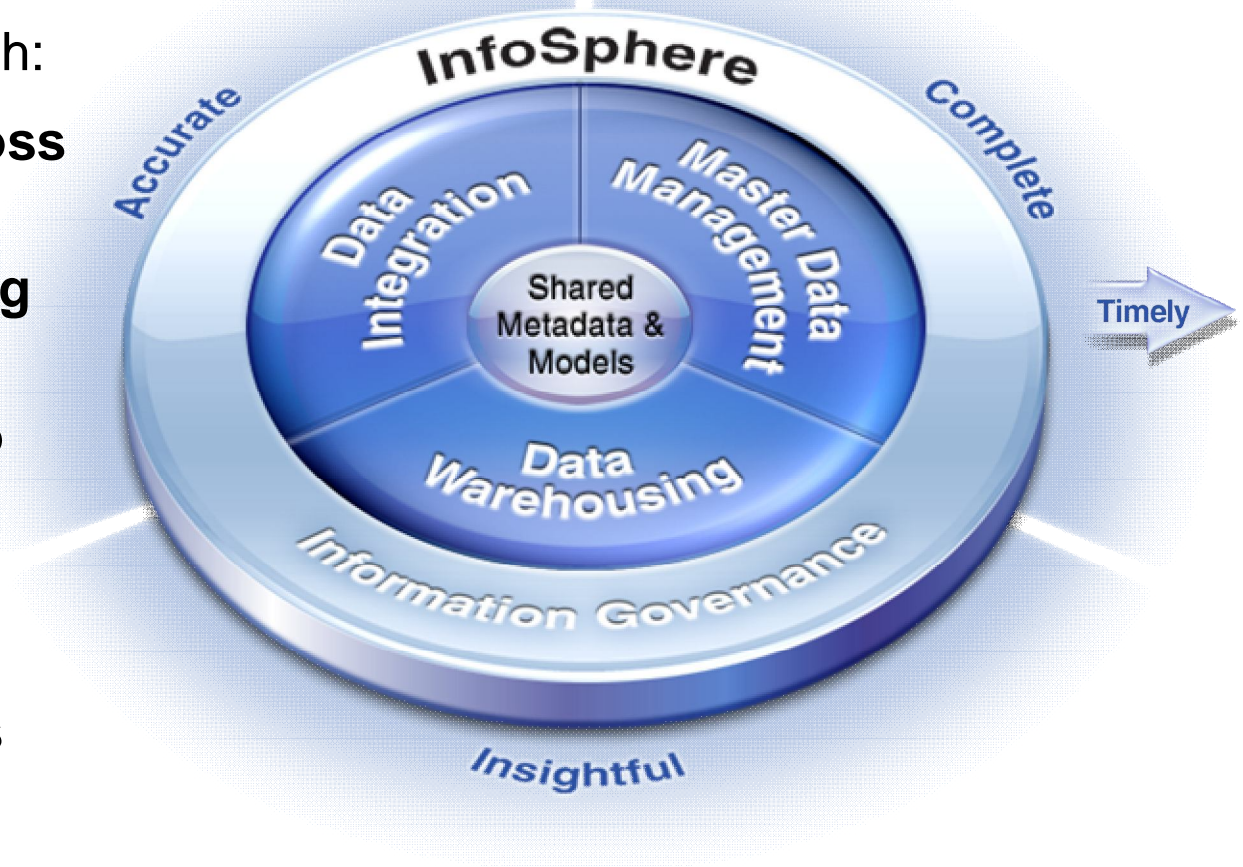


# *Information Integration*

# The InfoSphere Portfolio delivers unique synergistic value that accelerates and improves business results and reduces cost and risk

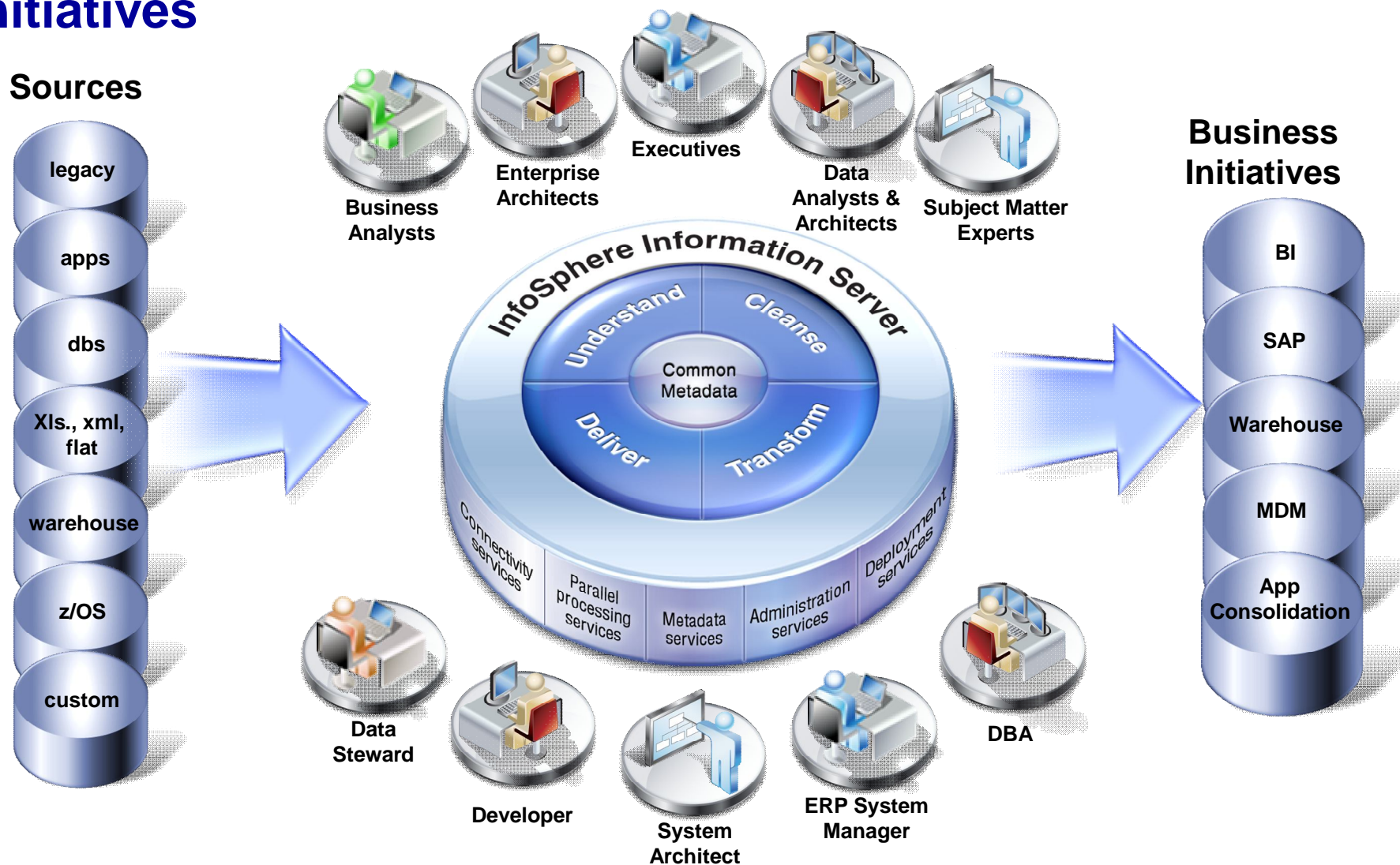
Accelerated value through:

- Deep integration across components
- Shared Understanding of existing assets
- Collaborative tools to align IT and business
- Shared model-driven design tools
- Pre-built accelerators to speed deployment



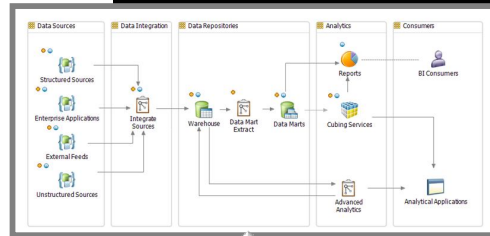


# Align business and IT objectives using single platform that creates trusted information for use in key initiatives



# Workflow

1

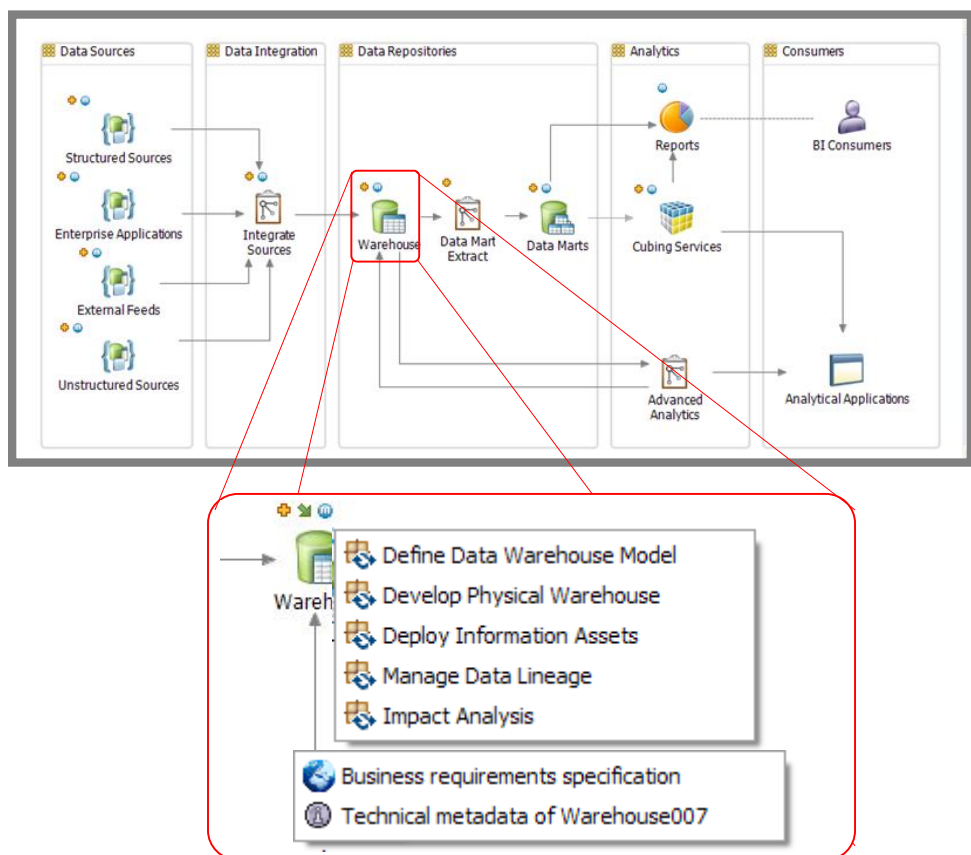


# InfoSphere Blueprint Director



Blueprint Director

Design your integration landscape with a visual approach from high – level to detailed design.



### Requirements

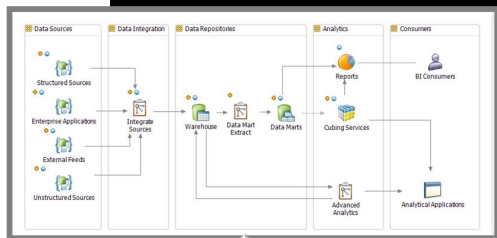
- Define and manage an end-2-end information flow.
- Link to a defined reference architecture and ensure collaboration.
- Provide insight to the information roadmap across the organization.

### Benefits

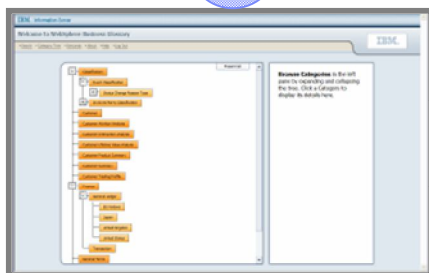
- Ensures on-time delivery via a re-usable approach to delivery.
- Guarantees best practices are implemented across shared teams and workstreams.
- Ensures collaboration on the design before action is taken.

# Workflow

1 Start from consistent blueprint, leveraging "best" practices



2



Document KPIs and associated business terms



# InfoSphere Business Glossary



Business Glossary

Create and manage business vocabulary and relationships and related to physical sources

## Requirements

- Capture business terms and classifications
- Link business terms and classifications to IT assets
- Identify data stewards and make glossary accessible

## Benefits

- Context for information is available to everyone, immediately
- IT projects are aligned with data governance
- Collaboration increases across business and IT



## Industry Models



- Proven approach and methodology
- Embedded industry expertise
- More than 500 global clients



**Banking \* Insurance \* Telco \* Retail \*  
Healthcare \* Financial Markets**

### Requirements

- Utilize Industry standard business definitions across the enterprise.
- Leverage connectivity to data model as an accelerator to industry driven projects.
- Deliver consistency across the business and IT stakeholders.

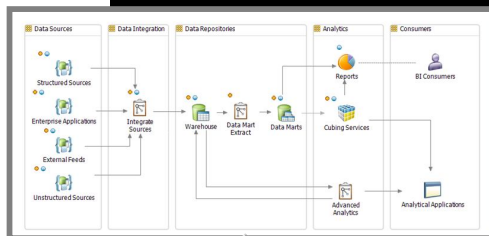
### Benefits

- Reduces analysis and design of functional requirements by more than 40%
- Accelerates stakeholder approval by more than 50%.
- Reduces time to value decreasing operational costs

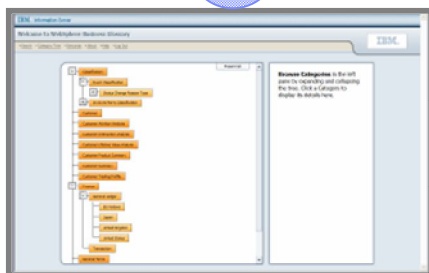


# Workflow

**1** Start from consistent blueprint, leveraging "best" practices

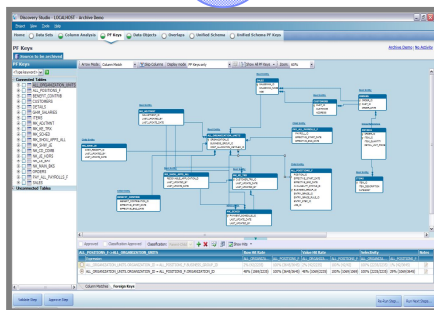


**2**



Document KPIs and associated business terms

**3**



Identify where KPI's exist, relationship and level of quality

# InfoSphere Discovery



Discovery

Accelerate project deployment by automating discovery of your distributed data landscape

## Requirements

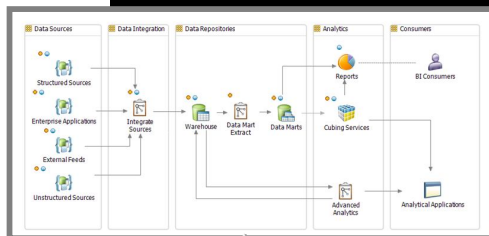
- Define business objects for archival and test data applications
- Discover data transformation rules and heterogeneous relationships
- Identify hidden sensitive data for privacy

## Benefits

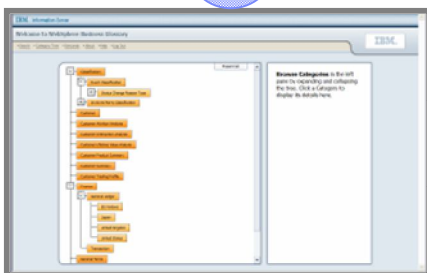
- Automation of manual activities accelerates time to value
- Business insight into data relationships reduces project risk
- Provides consistency across information agenda projects

# Workflow

**1** Start from consistent blueprint, leveraging “best” practices

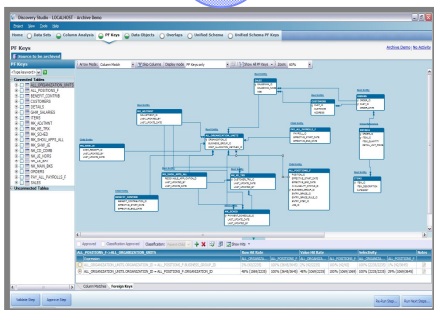


**2**



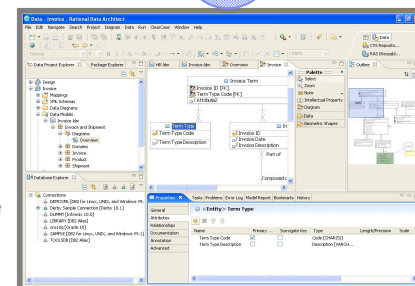
Document KPIs and associated business terms

**3**



Identify where KPI's exist, relationship and level of quality

**4**



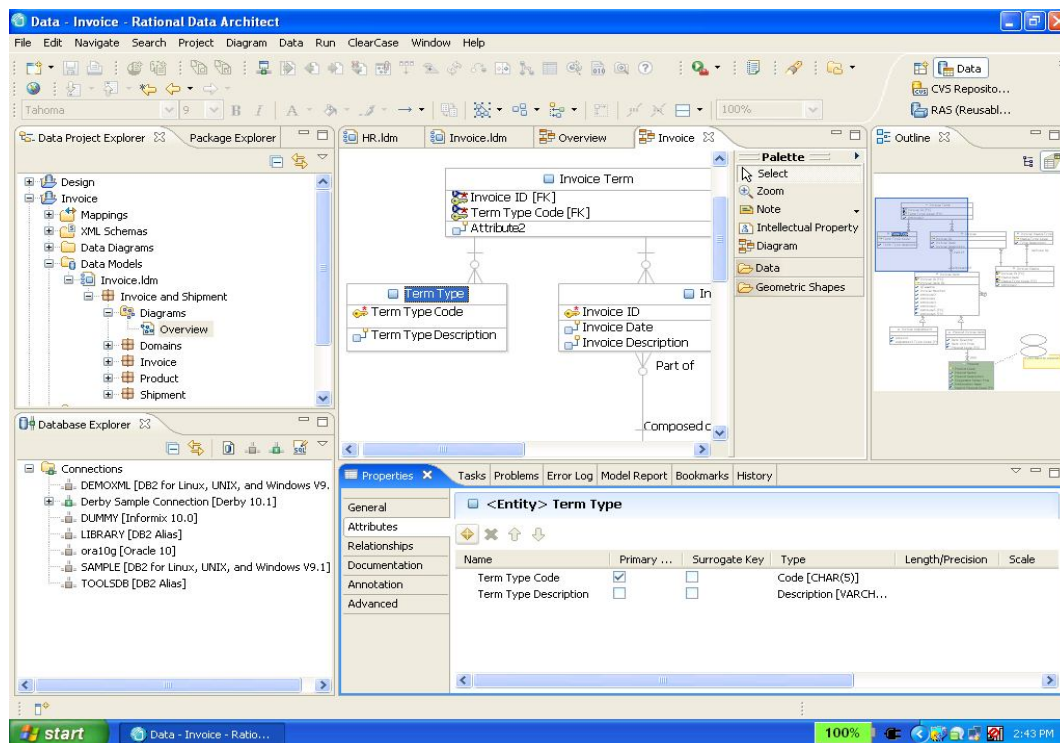
Create or Modify Data Model

# InfoSphere Data Architect



Data Architect

Model, visualize, and relate diverse and distributed data assets



## Requirements

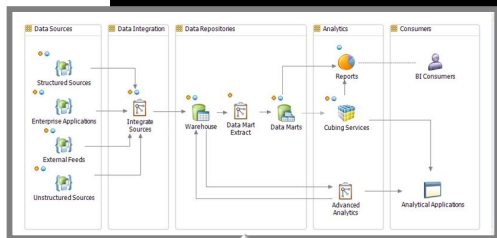
- Design and manage enterprise models
- Enforce model conformance to enterprise standards
- Leverage industry data models for best practices

## Benefits

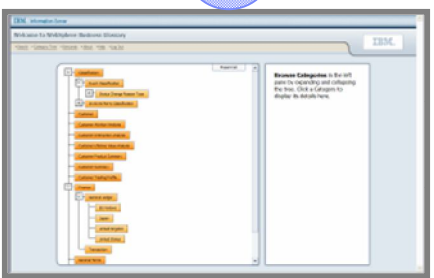
- Speed design activities
- Populate Business Glossary from model terms
- Validate models for enterprise conformance

# Workflow

**1** Start from consistent blueprint, leveraging "best" practices

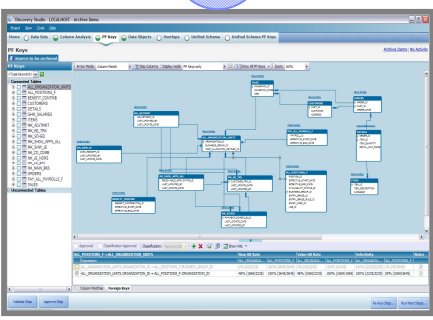


**2**



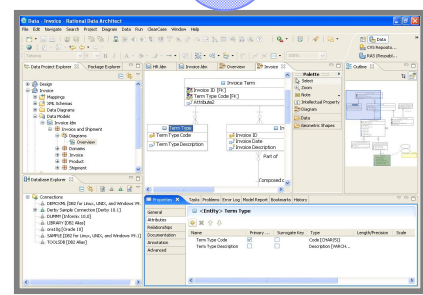
Document KPIs and associated business terms

**3**



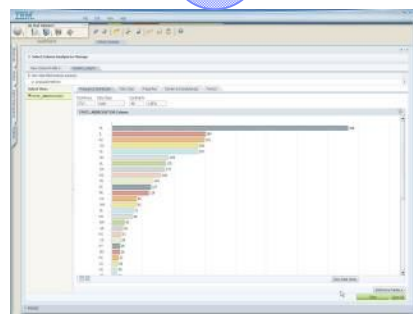
Identify where KPI's exist, relationship and level of quality

**4**



Create or Modify Data Model

**5**



Assess & monitor your data quality over time

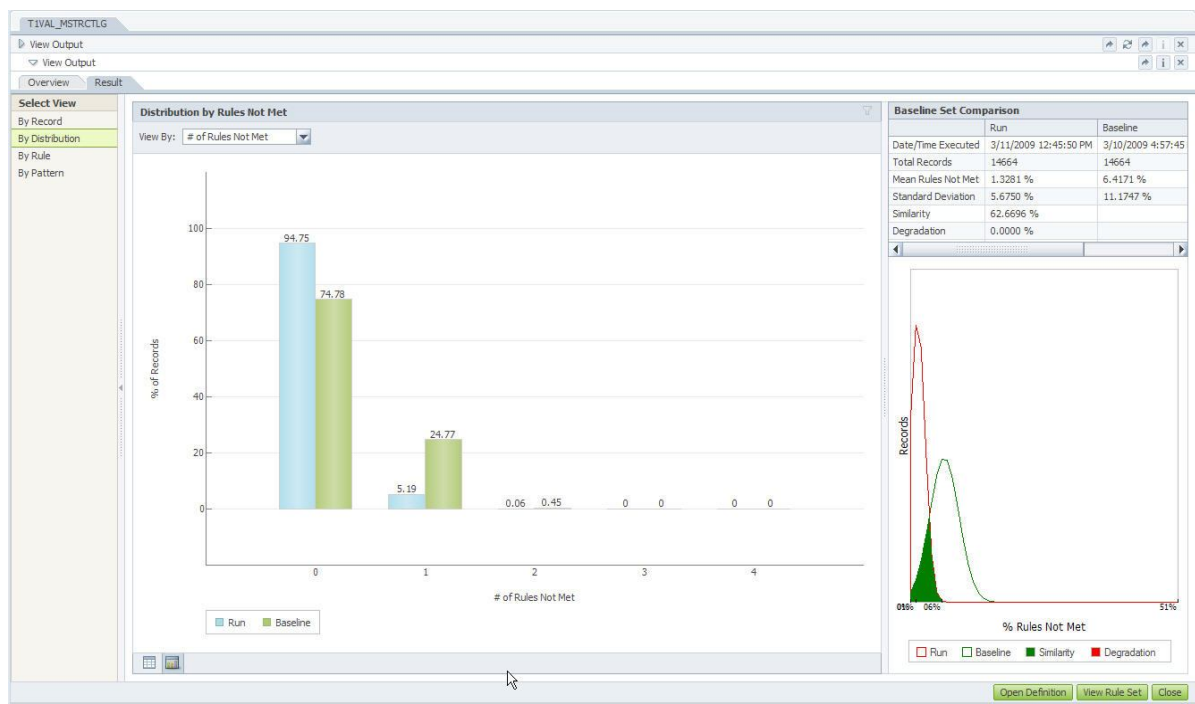


# InfoSphere Information Analyzer



Information Analyzer

Analyze source data quality and monitor adherence to integration and quality rules



## Requirements

- Perform data quality assessment
- Define business rules to monitor data quality
- Establish stewards for governance of data quality

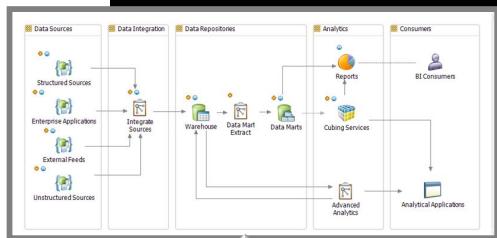
## Benefits

- Identify data quality issues early to reduce project risks
- Monitor quality metrics over time for compliance
- Create business confidence with trusted information

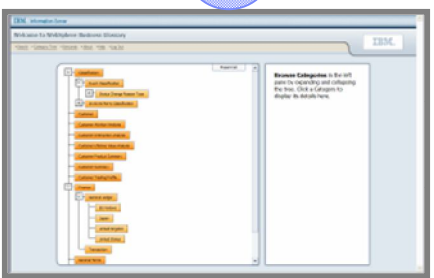


# Workflow

**1** Start from consistent blueprint, leveraging "best" practices

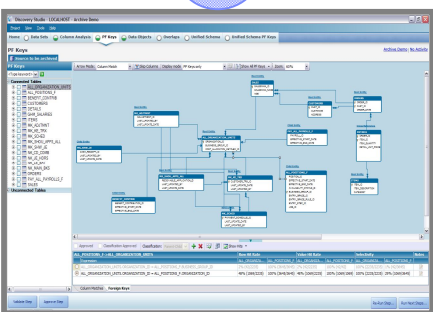


**2**



Document KPIs and associated business terms

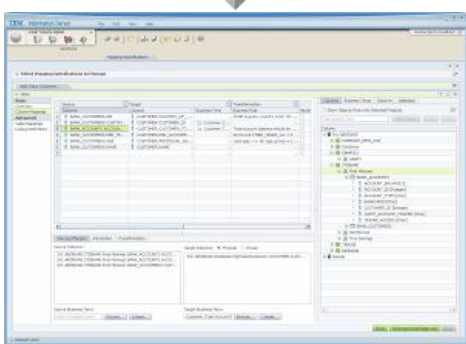
**3**



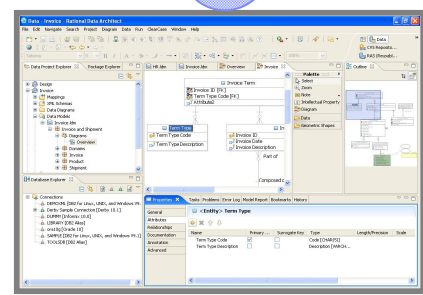
Identify where KPI's exist, relationship and level of quality

**6**

Create new transformation rules & document



**4**



Create or Modify Data Model

**5**



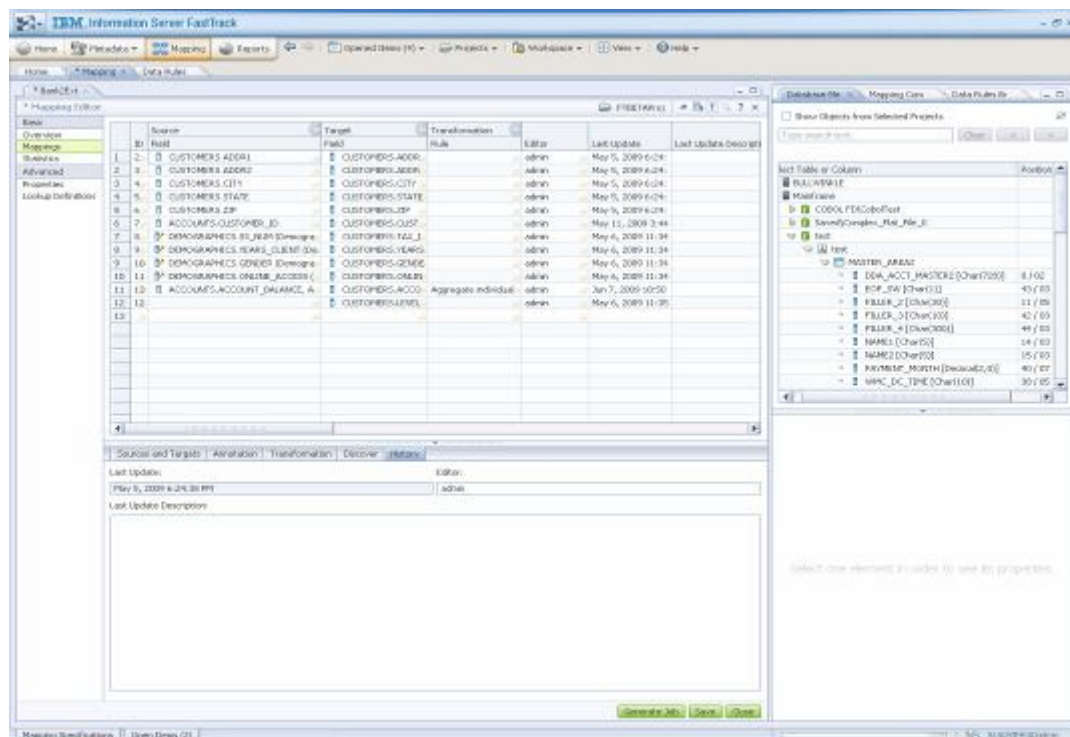
Assess & monitor your data quality over time

# InfoSphere FastTrack



FastTrack

Capture Design Specifications and accelerate translation into data integration projects



## Requirements

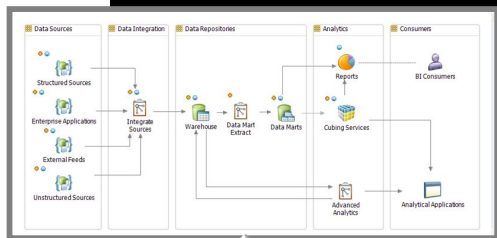
- Capture business requirements for source to target mappings
- Leverage source analysis and business vocabulary
- Generate candidate ETL jobs

## Benefits

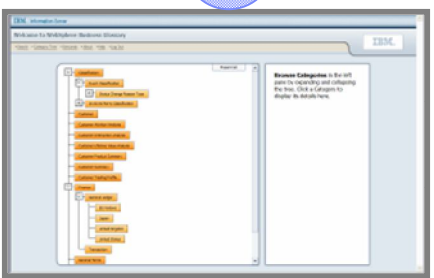
- Accelerate development of integration processes
- Centralized management of specifications
- Audit design decisions over time

# Workflow

**1** Start from consistent blueprint, leveraging "best" practices

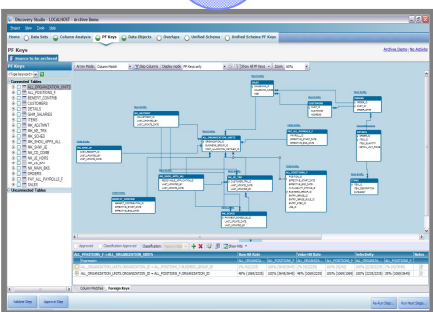


**2**



Document KPIs and associated business terms

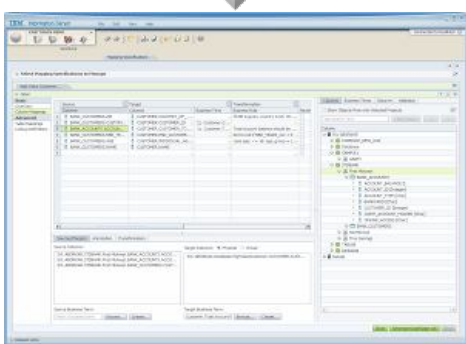
**3**



Identify where KPI's exist, relationship and level of quality

**6**

Create new transformation rules & document

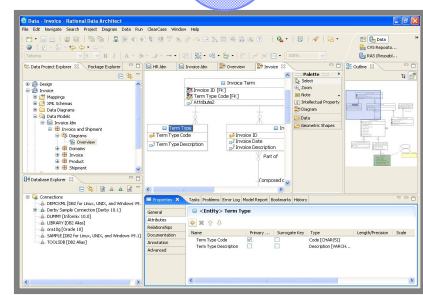


**7**

Report & Govern on metadata assets



**4**

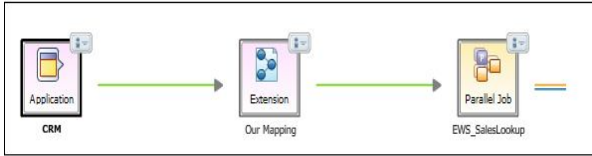


Create or Modify Data Model

**5**



Assess & monitor your data quality over time



# InfoSphere Metadata Workbench



Metadata Workbench

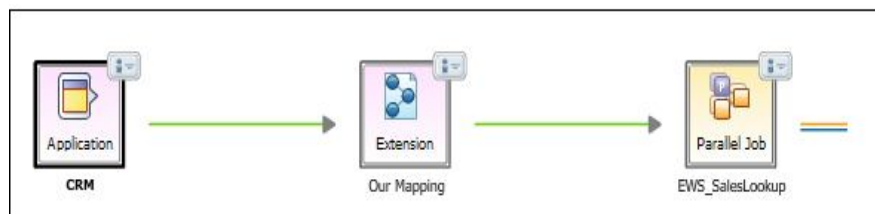
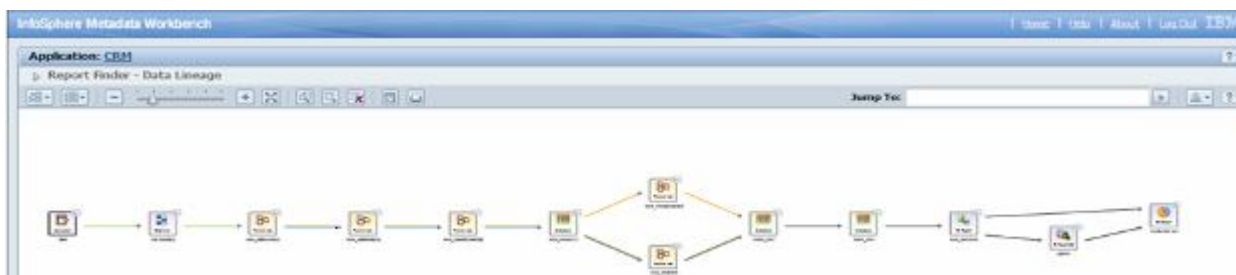
Support information governance with traceability on data movement, modeling & BI applications

## Requirements

- Handle Change Management processes with measured impact.
- Visualize and trace information flows across enterprise landscape
- Access and report on operational and design metadata

## Benefits

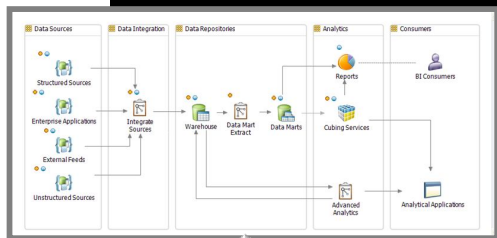
- Deliver enterprise audit control information.
- Mediate system disruptions.
- Govern enterprise assets over time.
- Ensure effective collaboration with line of business stakeholders.



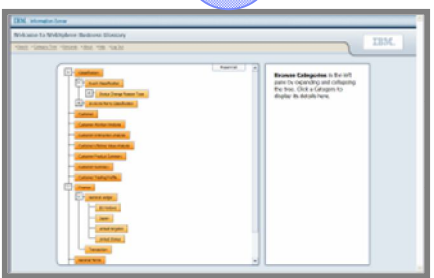


# Workflow

**1** Start from consistent blueprint, leveraging "best" practices

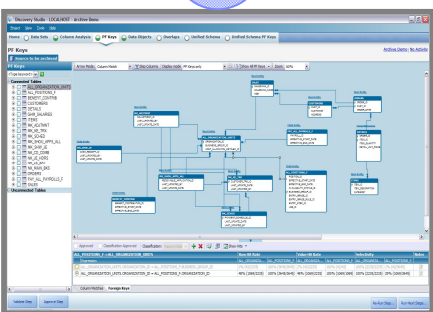


**2**



Document KPIs and associated business terms

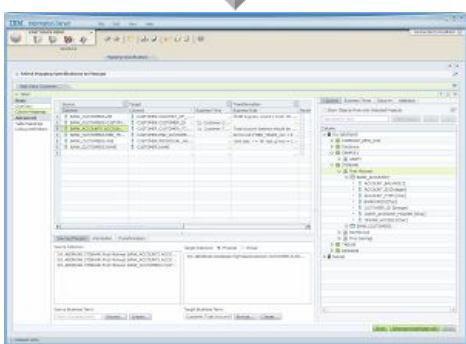
**3**



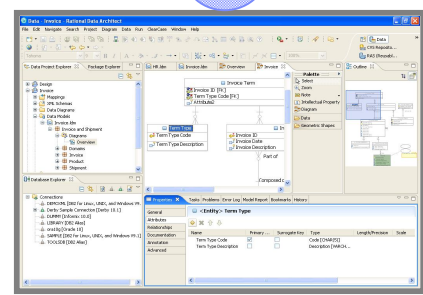
Identify where KPI's exist, relationship and level of quality

**6**

Create new transformation rules & document



**4**



Create or Modify Data Model

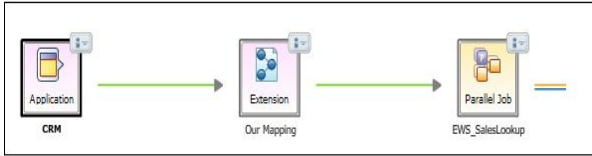
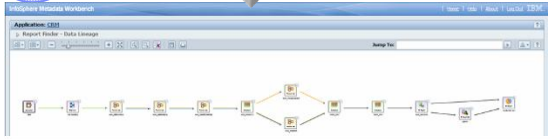
**5**



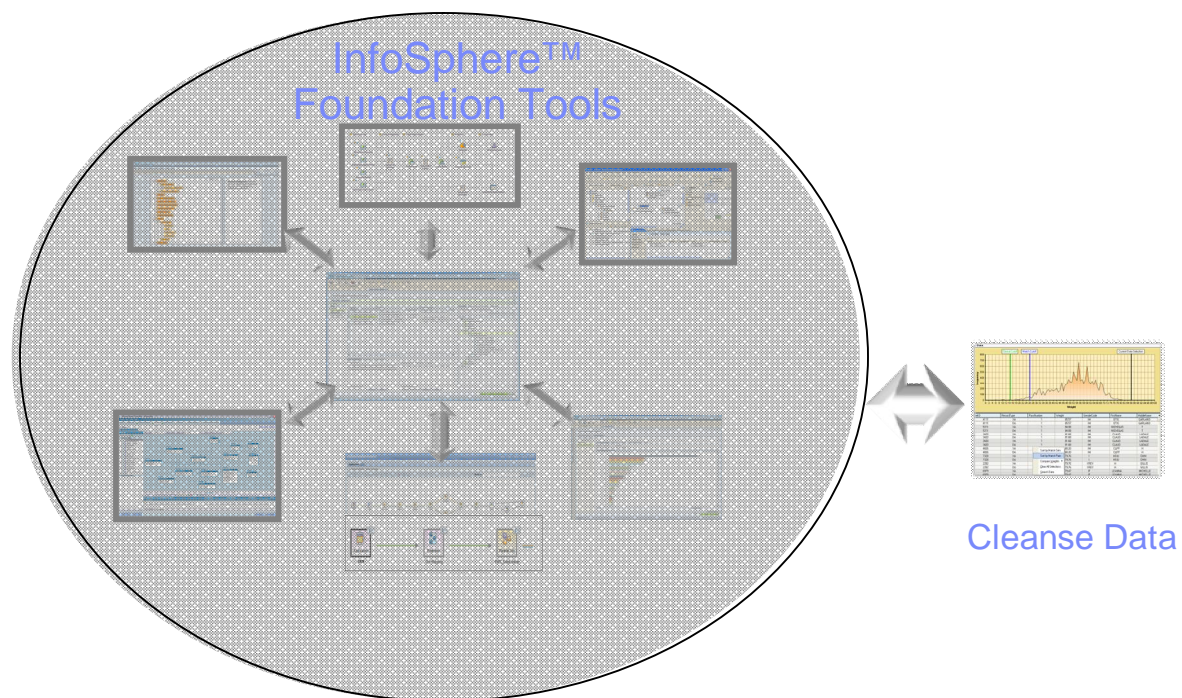
Assess & monitor your data quality over time

**7**

Report & Govern on metadata assets



# Workflow



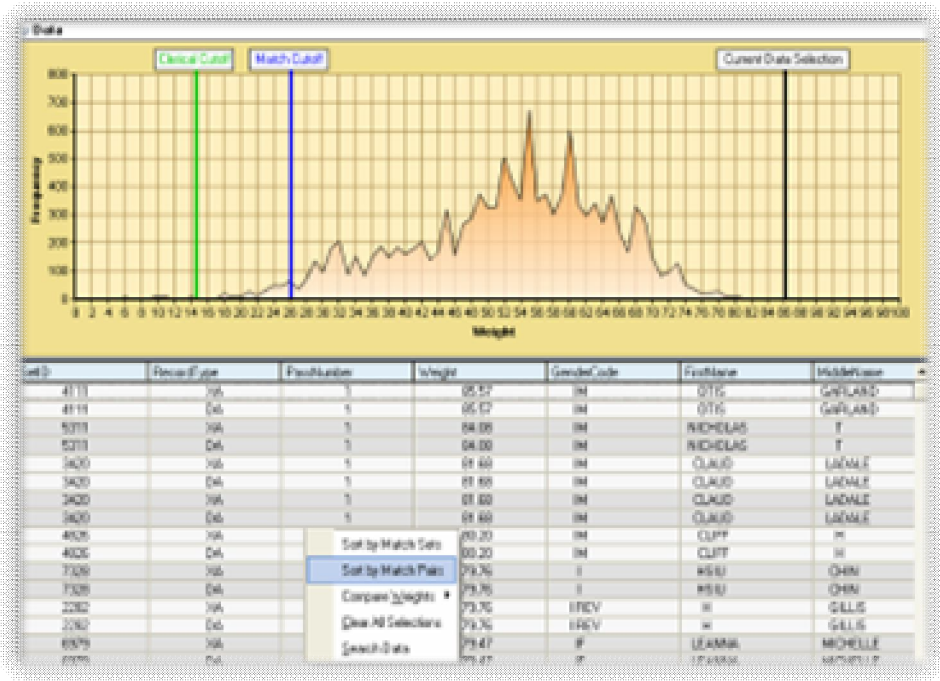


# InfoSphere QualityStage



QualityStage

Standardize, cleanse and deduplicate data, ensuring a complete, accurate view of information



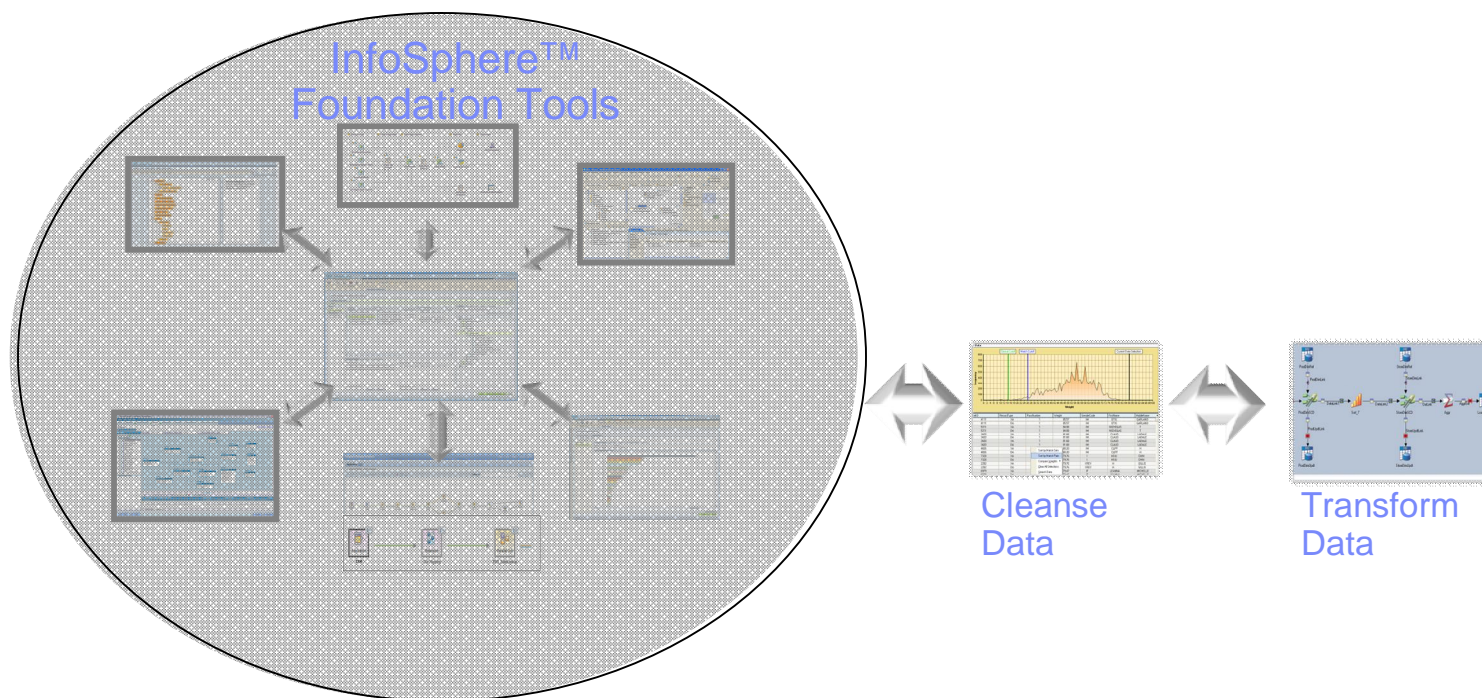
## Requirements

- Resolution of data quality issues
- Standardization of data formats
- Cleanse data
- Manage duplicate data
- Enable ongoing quality

## Benefits

- Removes duplicates
- Cross-references matching records
- Survives a single, complete record
- Validate and enriches data

# Workflow

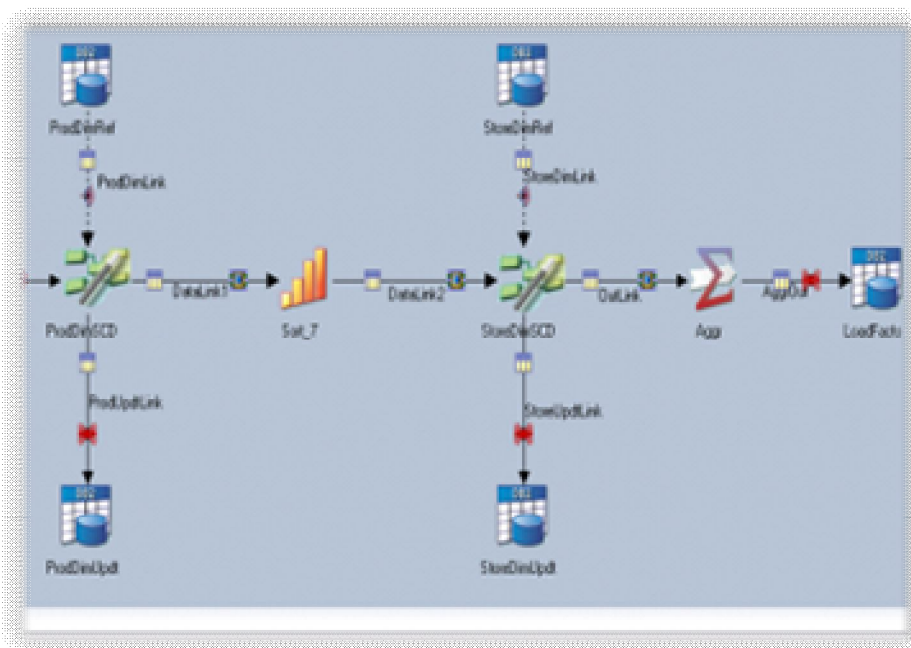


# InfoSphere DataStage



DataStage

Integrate, transform and deliver data on demand across multiple sources and targets including databases and enterprise applications



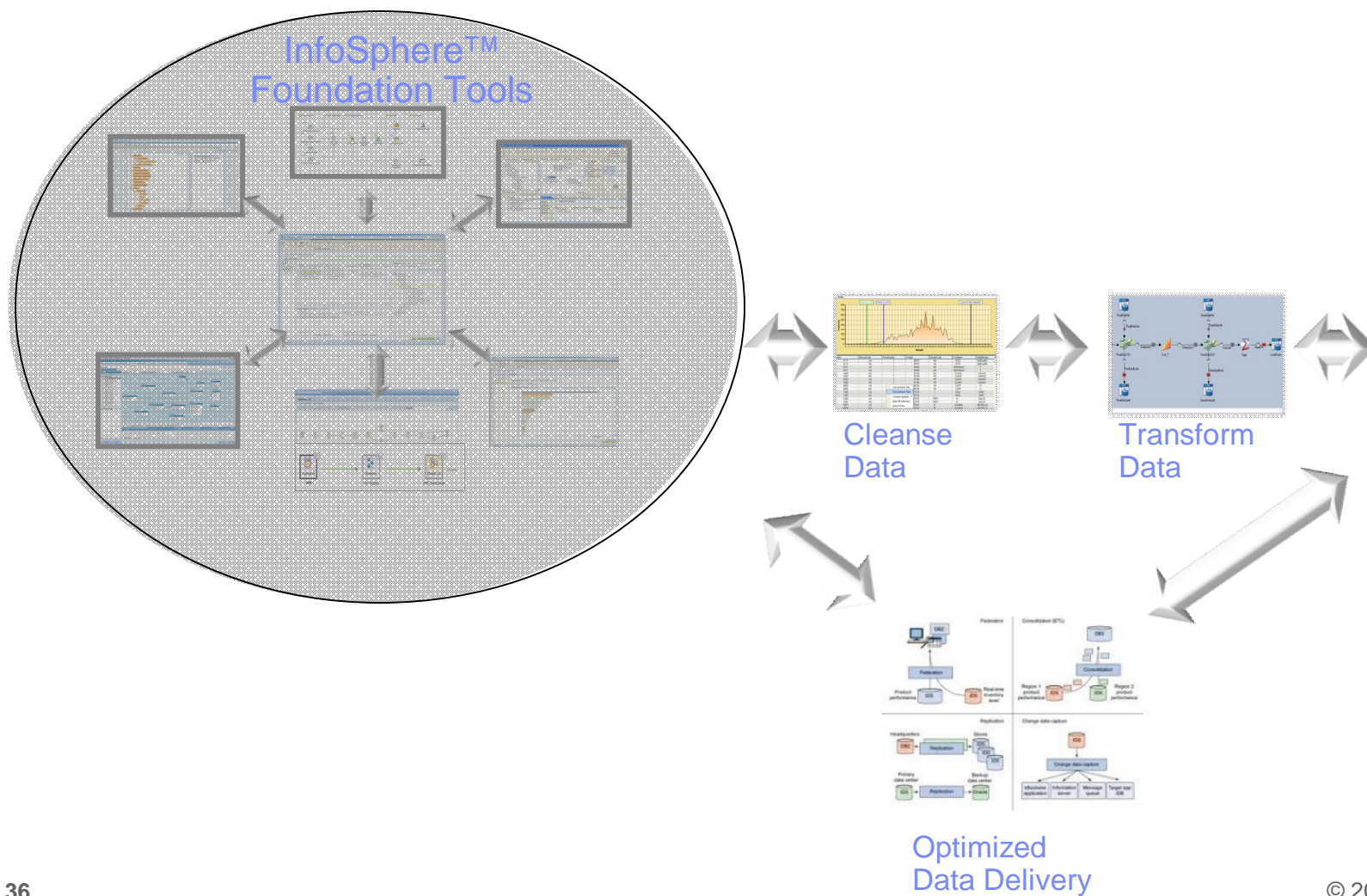
## Requirements

- Integrate and transform multiple, complex, and disparate sources of information
- Demand for data is diverse – DW, MDM, Analytics, Applications, and real time

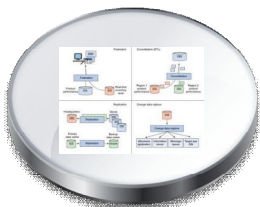
## Benefits

- Transform and aggregate any volume of information
- Deliver data in batch or real time through visually designed logic
- Hundreds of built-in transformation functions
- Metadata-driven productivity, enabling collaboration

# Workflow



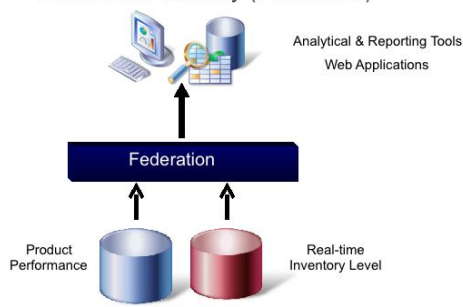
# Optimized Data Integration



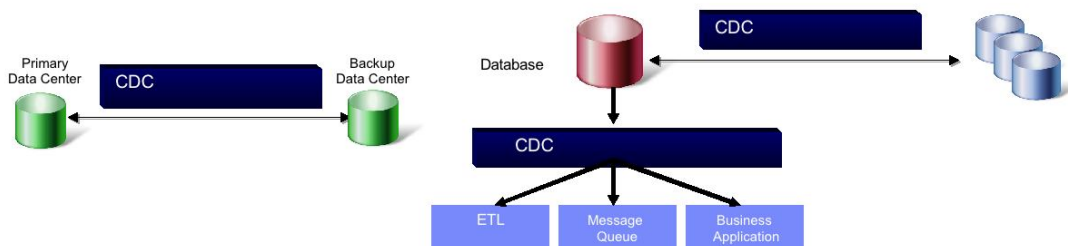
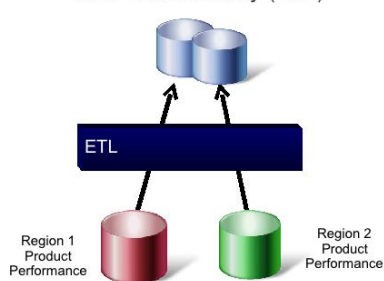
**Data Delivery**

**Manage and deliver information efficiently where the business demands require**

## Virtual Data Delivery (Federation)



## Bulk Data Delivery (ETL)



## Requirements

- Maintaining transactional integrity across systems.
- Manage data as it occurs
- Minimize impact to operational systems

## Benefits

- Captures changes in data across a variety of systems when needed
- No impact to active systems
- Manage intra-day reporting and update needs
- Keep the business 'data' current



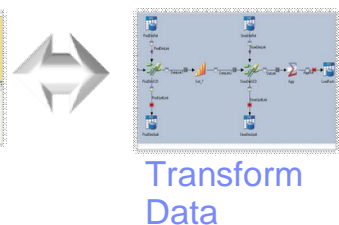
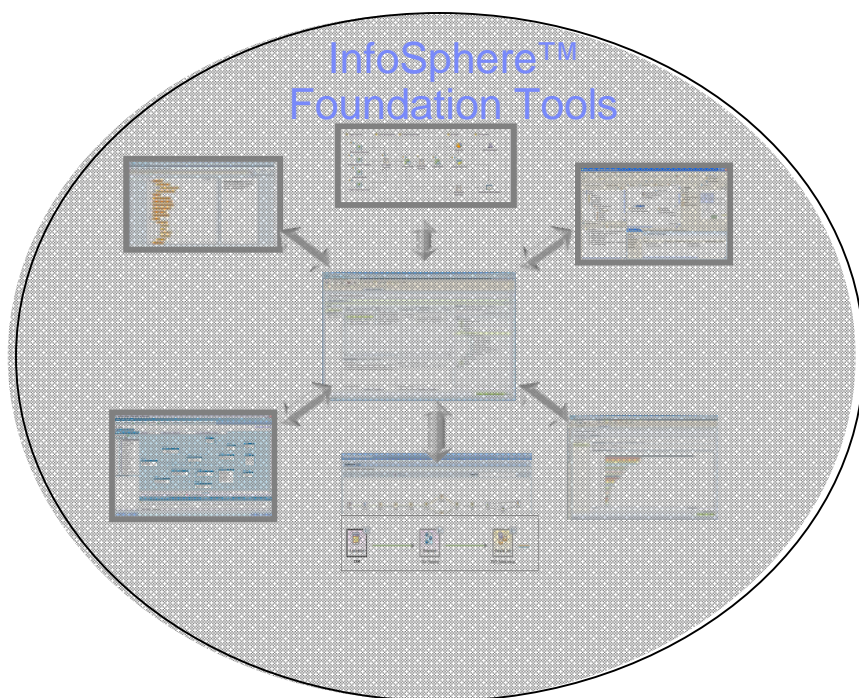
# Workflow

## Integration Landscape

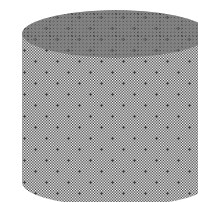
Design

Deploy & Optimize

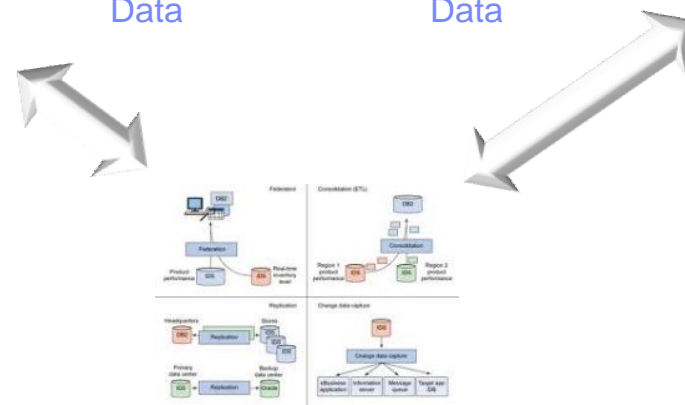
Manage



TARGETS



BI  
Warehouse  
MDM  
ODS  
Etc...



Optimized  
Data Delivery

**Thank you**