

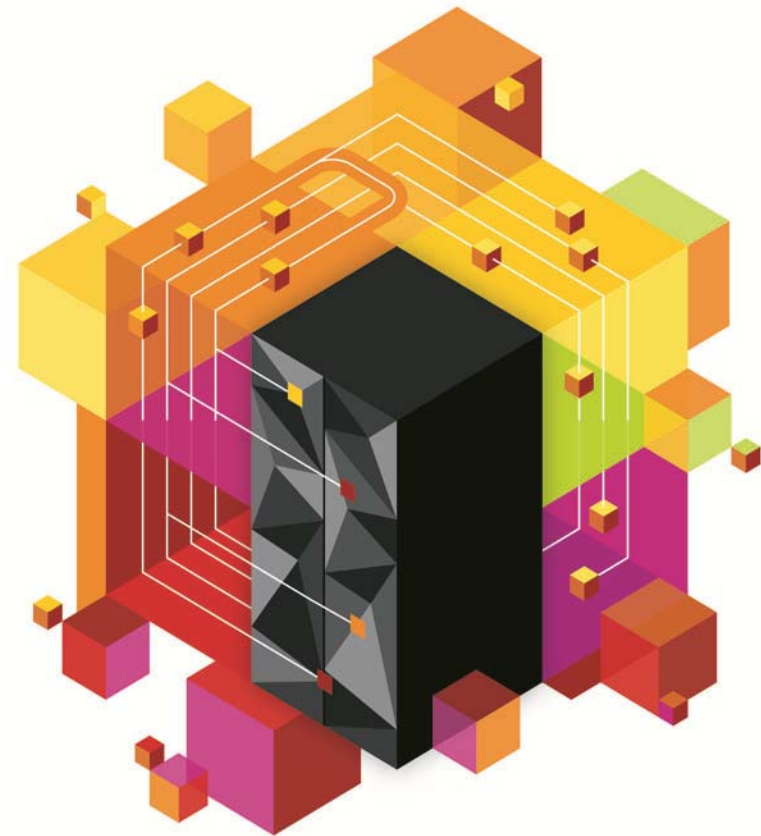


## Session 13157:

# Lunch and Learn: Live demo! New IBM CICS Tools and IBM Problem Determination Tools

Presenter – Eric Higgins [erichiggins@us.ibm.com](mailto:erichiggins@us.ibm.com)

Vikram Manchala [vikramm@us.ibm.com](mailto:vikramm@us.ibm.com)



Date 02/05/2013

© 2013 IBM Corporation

# Preface

- **The following terms are trademarks or registered trademarks of the International Business Machines Corporation in the United States and/or other countries:**
  - CICS, CICS Explorer, CICSplex SM, DB2, IMS, MQSeries, WebSphere, IBM, SupportPac, z/OS, zSeries, Tivoli, Tivoli Enterprise, OMEGAMON XE
- **Java and all Java-based trademarks and logos are trademarks or registered trademarks of Sun Microsystems, Inc. in the United States and/or other countries.**
- **Microsoft, Windows, and the Windows logo are trademarks of Microsoft Corporation in the United States, other countries, or both.**
- **Other company, product, service names, and logos may be trademarks or service marks of others.**

# IBM Problem Determination Tools Version 12.1



## Tools to address your z/OS Development or System Programming needs

### What's new in PD Tools V12.1

- New **IBM Problem Determination Tools Studio** pre-packaged with plug-ins
- File Manager DB2 and CICS plug-in
- Initial Workload Simulator plug-in
- Enhanced integration and synergy amongst PD Tools, CICS Explorer and/or IMS Explorer taking advantage of newly announce common z/OS Explorer capabilities
- CICS TS 4.2, IMS V12, MQ 8.1 updates to ensure synchronization with latest subsystems
- Improved Java support in APA and FA

### PD Tools provides ...

- Five tools addressing z/OS problem resolution needs - Debug Tool, Fault Analyzer, File Manager, Application Performance Analyzer and Workload Simulator
- Subsystem and language support traversing z/OS provided in a timely manner when subsystems and languages are updated
- Improved TCO with full function tools at competitive price

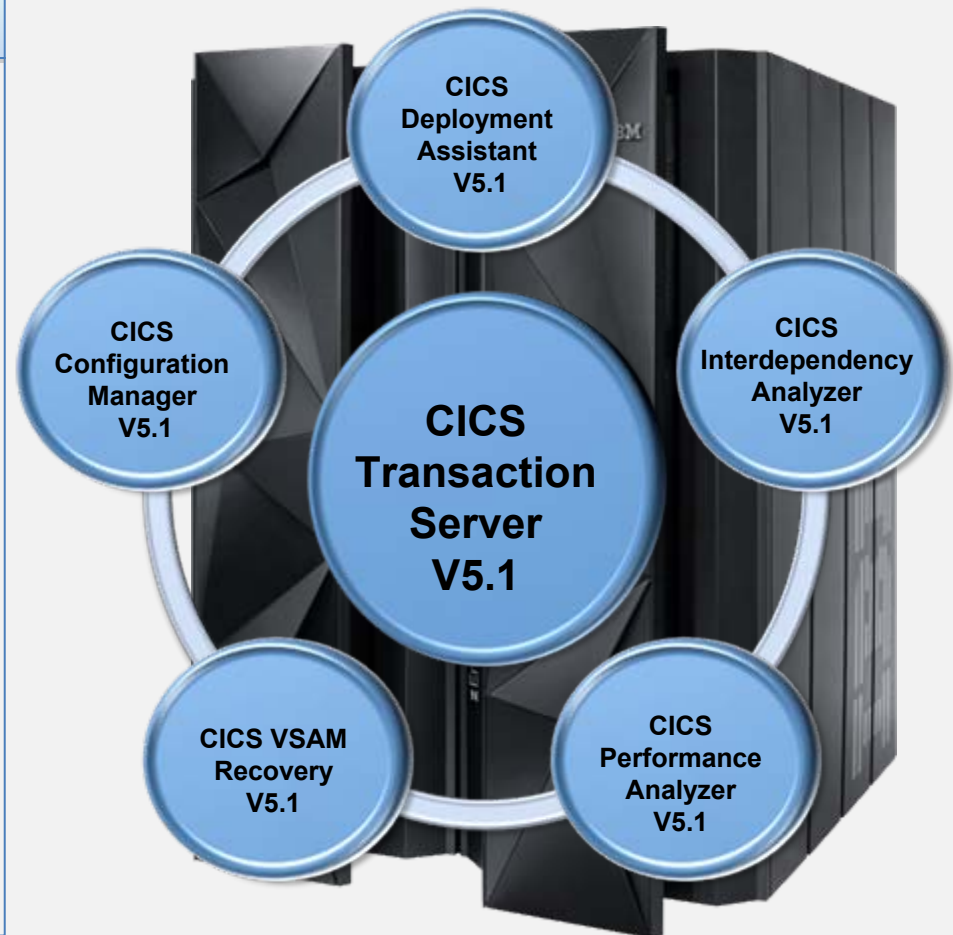




## Five core CICS Tools – Day one CICS TS V5.1 exploitation

Fully integrated with CICS TS & CICS Explorer

- Discovery and visualization aids insight into application and platform dependencies
- Automation speeds service delivery and ensures standardization and governance
- Modern, integrated user interfaces lower skills barrier
- Day-1 exploitation of CICS TS V5.1 new capabilities reduces time to value
- Five core tools support and extend the CICS runtime



# IBM CICS Explorer® V5.1



*Enhanced!*

Session and user views, Configuration, Broadcast, User and Admin commands

**ISM**

*New!*

Migrated file view

**VT**

IMS DB mgt

**IMS Explorer**

Configuration Status Control, Test

**MQ**

Status Situations Topology

**XE**

Threadsafe, File, CPU, Response & Wait analysis, Statistics, Alerts, Graphical and Sheet views

**PA**

Daemon & Connection Status & Test

**TG**

Develop Test

**RDz**

Manipulate, browse z/OS data sets, z/FS, VSAM, MQ, CICS, DB2

**FM**

CICS, IMS, DB2, & z/OS Abend Reporting & Diagnosis

**FA**

Deployment, Discovery, Visualization, Cloning, Automation & Control

**DA**

CICS, IMS, DB2, & z/OS Application Debugging

**DT**

CICS, IMS, DB2, & z/OS Observation Requests & Reporting

**APA**

*Enhanced!*

Execution Tree Dependencies Queries Command Flow

**IA**

CRUD, Install, History, Backout, Audit, Search, Compare, Packaging

**CM**

CRUD, Install, Control, Filter, Sort, Topology, Events, ATOM, Java, WLM, Txn Tracking, Copy/Paste, Cloud, Web apps

**SM**

*Enhanced!*

3270 application performance testing

**WSIM**

Complete PD Tools workbench

**PDT Studio**

*New!*

SM	CICS Transaction Server
IA	CICS Interdependency Analyzer
PA	CICS Performance Analyzer
CM	CICS Configuration Manager
DA	CICS Deployment Assistant
TG	CICS Transaction Gateway
ISM	IBM Session Manager
VT	CICS VAM Transparency

z/OS Connections, z/OS Datasets, z/FS Files, JES

**z/OS Explorer**

**CICS TS, IMS, DB2, MQ, z/OS**

APA	Application Performance Analyzer
FA	Fault Analyzer
DT	Debug Tool
FM	File Manager
WSIM	Workload Simulator
MQ	WebSphere MQ
XE	OMEGAMON XE for CICS
RDz	Rational Developer for System z

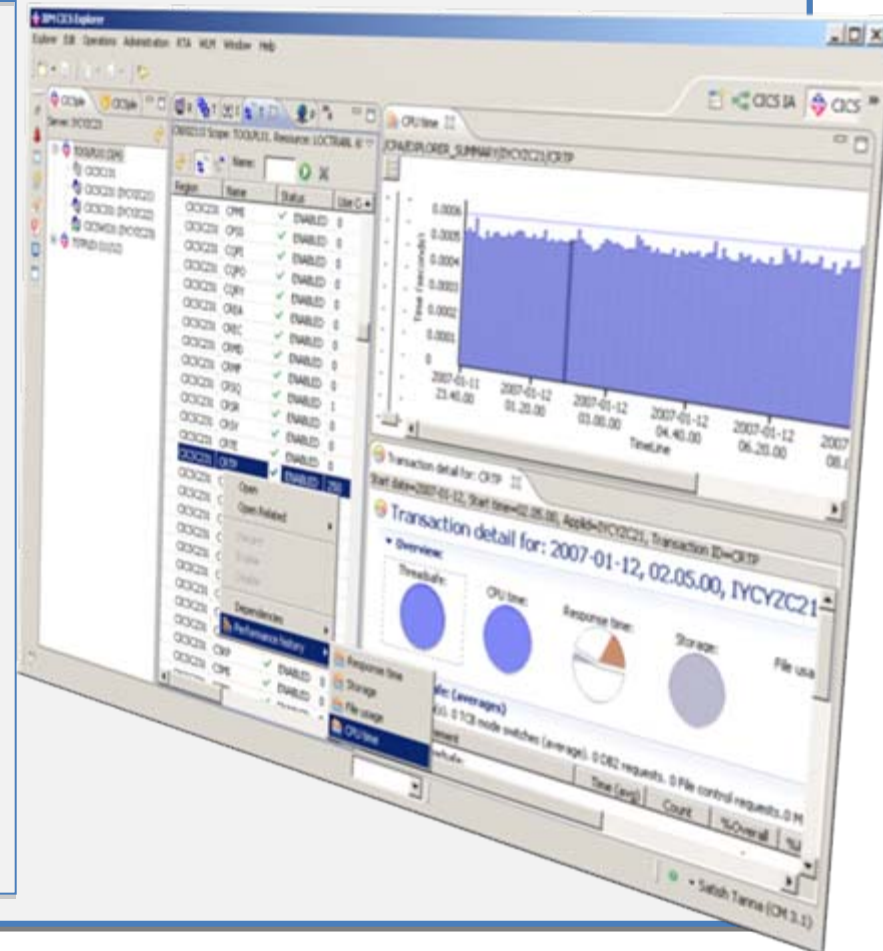


## Live Demonstration via CICS Explorer Using PD and CICS tools plug-ins

### The General Insurance Application (GENAPP)

The general insurance application is a working COBOL application that you can use to try out different features of CICS.

- The general insurance application simulates transactions made by an insurance company to create and manage its customers and insurance policies.
- The application provides sample data and a 3270 interface for creating and inquiring on customers and policy information. Because the application is designed to simulate the flow of an application, some aspects of the application architecture do not use best practices.
- However, the application is designed to be extended to demonstrate other ways of accessing and transforming traditional applications that are best practices.
- GENAPP is available described in greater detail in the CICS V51 info-center and is also available as supportpac CB12.



An abstract graphic in the top-left corner composed of various colored 3D blocks (red, pink, orange, black) and a grey cone-like shape.

# Session 13157

**Lunch and Learn: Live demo! New IBM CICS Tools and IBM Problem Determination Tools Efficiently Support the z/OS Ecosystem**

**Product Descriptions and Sources of Information**

# CICS Deployment Assistant for z/OS V5.1



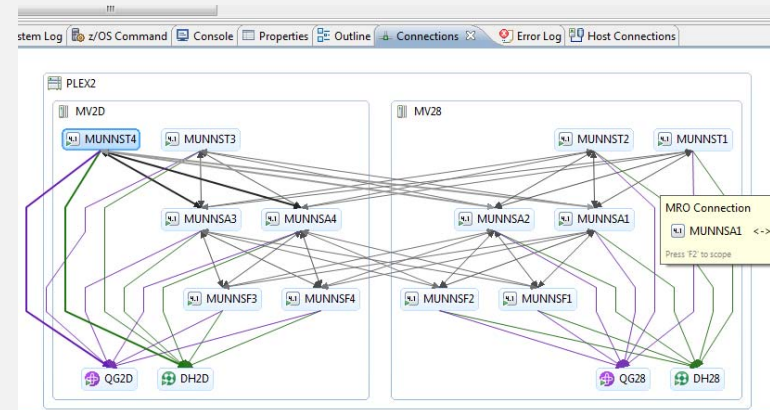
## CICS Discovery and Provisioning

### What's new in CICS DA V5.1...

- Enriched discovery of over 30 entities
- Improved visualization with tagging and filtering
- Connections view with scoping
- Export model for external reporting
- CICS TS V5.1 upgrade cheat sheet
- Tagging and filtering of model elements
- New navigators
- Clone JCL improvements
- IPv6 support
- Virtual IP addressing support
- Serviceability enhancements

### CICS DA enables you to...

- Visualize and manage your CICS topology
- Discover existing regions and sub-systems
- Automation creates new CICSplex
- Plexify and clone CICS regions
- Start and stop a CICS region





# CICS Performance Analyzer for z/OS V5.1



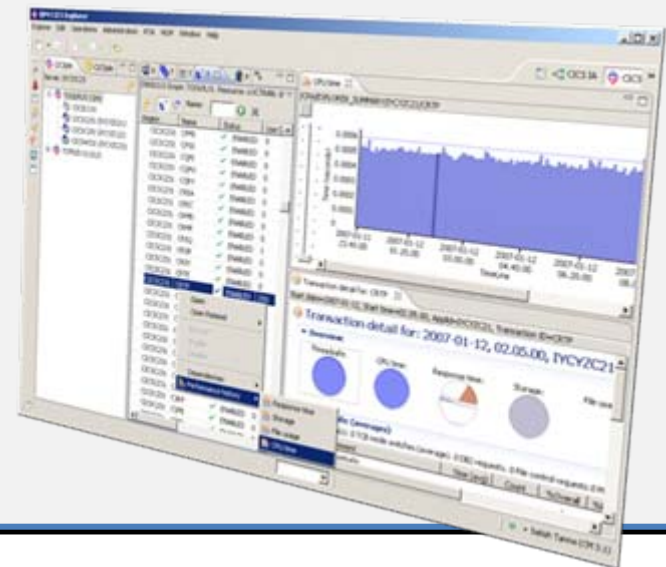
## Performance insight

### What's new in CICS PA V5.1...

- CICS TS V5.1 – support for new metrics
- Application, Platform, and Policy
- Plug-in enhancements:
  - Application centric view
  - Customizable sheet views
  - Suspend time reporting
  - Easy navigation to key reports and alerts
- SMF log stream support
- Batch statistics reporting for CICS TG
- Improved management of PA data loaded to DB2
- CPU totals on MQ reports
- SMF data processing performance improvements

### CICS PA enables you to...

- Comprehensive Performance Reporting and Analysis for CICS including DB2, WebSphere MQ, and MVS System Logger
- Understand trends and develop capacity plans
- View statistics and create statistical alerts



# CICS Interdependency Analyzer for z/OS V5.1



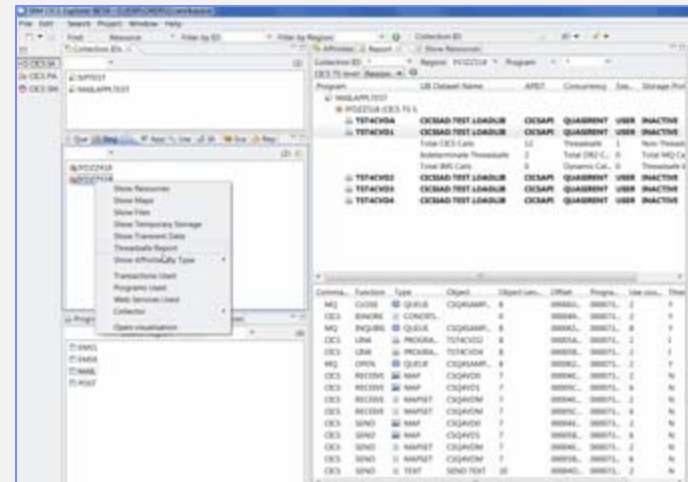
## Application Understanding

### What's new in CICS IA V5.1...

- Support for CICS Transaction Server V5.1, including enhanced business application analysis
- New thread-safe analysis plug-in view and report
- Improved installation and configuration
- DB2 data lifecycle management
- Native SQL language stored procedures
- Graphical visualization view of resources

### CICS IA enables you to...

- Identify threadsafe / non-threadsafe programs
- Isolate and remove affinities
- Speed CICSplex® SM workload management
- Advanced CICS command flow analysis
- Highlight CICS web service candidates



# Application Performance Analyzer for z/OS (APA) V12.1



## *Pinpoint enterprise application bottlenecks*

### *What's new in APA V12.1?*

- Enhanced plug-in for CICS Explorer
- Integration with z/OS Explorer credentials and connections
- Reduced memory requirement
- Improved CICS and DASD report accuracy
- Sticky notes
- Save report as HTML, PDF, XML
- Email reports
- SSL and pass-phrase support
- Numerous other enhancements

### *APA enables you to...*

- Measure and report resource use in virtually any IBM z/OS® address space
- Isolates application performance problems across entire application – subsystems (DB2, IMS, CICS, MQ, USS, WAS), languages, and DASD
- Identify constraints
- Non-intrusive
- Helps with design, development and maintenance
- Shares side files with Fault Analyzer and Debug Tool
- Broad product support:
  - C/C++, Assembler, COBOL, PL/I, Java V6.0.1, CICS TS V4.2, IMS V12, DB2, WebSphere MQ, and WebSphere Application Server

# Fault Analyzer for z/OS (FA)



*Pinpoint the cause of enterprise application failures*

## *What's new in FA V12.1...*

- Enhanced plug-in for CICS Explorer
- Integration with z/OS Explorer credentials and connections
- Pass-phrase support
- Java enhancements
- Usability enhancements

## *FA enables you to...*

- Detailed report about program failures
- Fault-history file to track and manage application failures and fault reports
- View storage contents, trace tables and terminal screen images at the time of failure
- Customize message descriptions for failure reports
- Control which users can access history files
- Plug-in support for CICS Explorer, RDz, and IMS Enterprise Explorer

# IBM Debug Tool for z/OS V12.1



## *Application insight*

### *What's new in DT V12.1*

- Enhanced plug-in for CICS Explorer
- DTCN profile plug-in integrated with CICS Explorer
- Startup at subprogram boundary
- Dynamic debugging supports applications using XPLINK linkage
- Consolidated user exits
- Enhanced remote security
- Numerous other enhancements
- Support for CICS TS V5.1 and IMS V12

### *DT enables you to...*

- Debug applications in CICS, IMS, DB2 Stored Procedures and UNIX System Services
- Source-level debugging, Multiple Conditional Unconditional breakpoints, Step mode debugging, Dynamic patching (Modify variables and Insert statements), log commands, Frequency sampler, Programmable command entry, etc
- Identify old OS/VS COBOL & VS COBOL II source code and upgrade it to IBM Enterprise COBOL or ANSI 85 standard
- One tool debugs batch, TSO, CICS, DB2, DB2 stored procedures and IMS applications written in COBOL, PL/I, C/C++ and Assembler
- Integrated development, test and debugging environment with CICS Explorer, RDz, and IMS Enterprise Explorer
- Code coverage tools

# File Manager for z/OS (FM) V12.1



*Manage a variety of enterprise data file structures*

## *What's new in FM V12.1?*

- Enhanced plug-in for CICS Explorer, including:
- Support for z/OS data sets, zFS files, CICS Files, TS and TS queues, MQ queues, and DB2 databases
- Integration with z/OS Explorer credentials and connections
- Support for CICS TS V5.1 and IMS V12
- Other Base, DB2, IMS, and plug-in enhancements

## *FM enables you to...*

- Select, create, browse, copy, edit, print, and format or reformat data files
- Manipulate data using COBOL and PL/I record layouts interactively or in batch.
- Comprehensive, user-friendly, batch and interactive utilities extends standard ISPF
- Access CICS resources with CICS transaction
- Audit logging and scrambling allow development and production use
- SQL Prototyping and Execution
- Broad product support:
  - Works with, CICS, DB2, IMS and z/OS (QSAM, VSAM, PDS, zFS) data
  - Plug-in support for CICS Explorer, RDz, and IMS Enterprise Explorer

# CICS Configuration Manager for z/OS V5.1



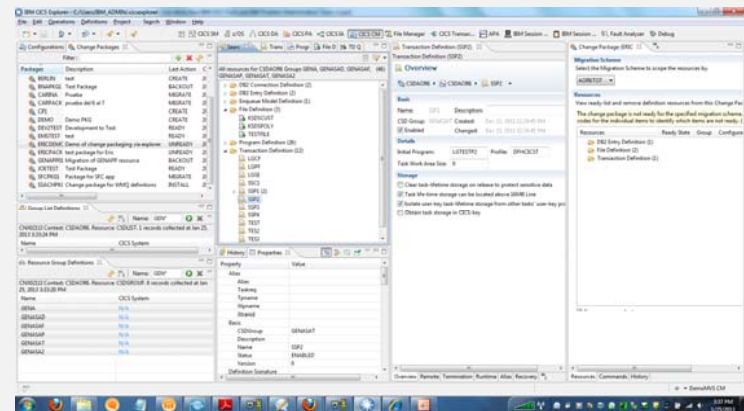
*Single point of control over CICS resource definitions*

## What's new in CICS CM V5.1...

- Application, Platform, and Policy resources
- Enhanced plug-in with Packaging and Deployment Analysis
- Sort in Package view and Ready list
- ADD/REMOVE CSD group to/from LIST during Migrate operation
- Option to automatically remove empty Groups from CSD List
- SSL support for plug-in connection
- Audit trail for Install and NewCopy

## CICS CM enables you to...

- Manage changes throughout the life-cycle
- Create reports to identify redundant definitions, show resource relationships, and change management history
- Manage audit, back-out and change authorizations



# CICS VSAM Recovery for z/OS V5.1

## Reduce the risk to your VSAM Data

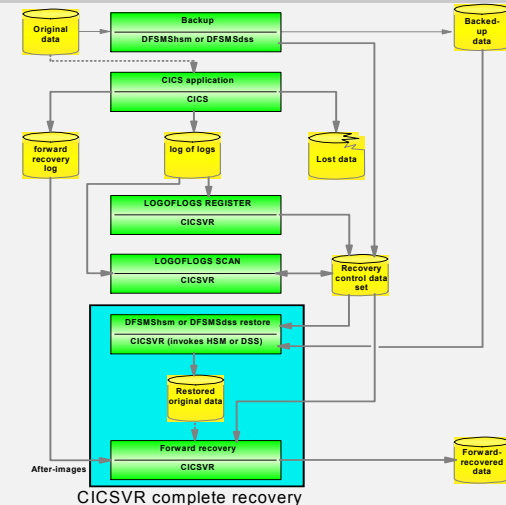
### What's new in CICS VR V5.1...

- Replication logging in support of the GDPS-Active-Active availability solution
- Batch logging enhancements
- Batch backout improvements
- Migration utility enhancements
- Logstream printing and other usability enhancements

### CICS VR enables you to...

- Supports backups created by Backup-While-Open (BWO)
- Automate recovery
- Test forward recovery and backout
- Produce disaster recovery reports

CICS TS and CICSVR





# CICS VSAM Transparency for z/OS V2.1



## Modernize your CICS and batch VSAM data

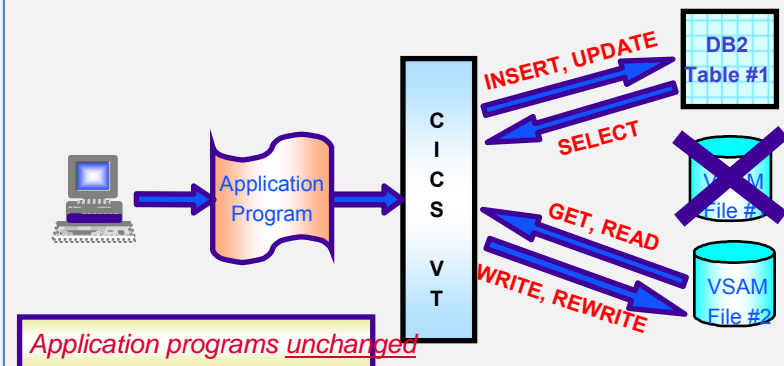
### What's new in CICS VT V2.1...

- Auto-generate customized data migration JCL
- Enhanced IDCAMS REPRO support
- New migration tracking report
- Improved diagnostic facilities
- Support for CICS® Transaction Server V5.1 and DB2® 10
- Other functional enhancements
  - Long column name support
  - HLL support for user exits
  - RRS support in batch
  - Read-only DDM
  - Dynamic DST update
- New plug-in for CICS Explorer

### CICS VT enables you to...

- Migrate VSAM files to DB2 without changing application programs
- Maintain single copy of the data
- CICS and batch programs access data in DB2 under the control of CICS VT
- Access migrated DB2 data natively using SQL

### After CICS VT



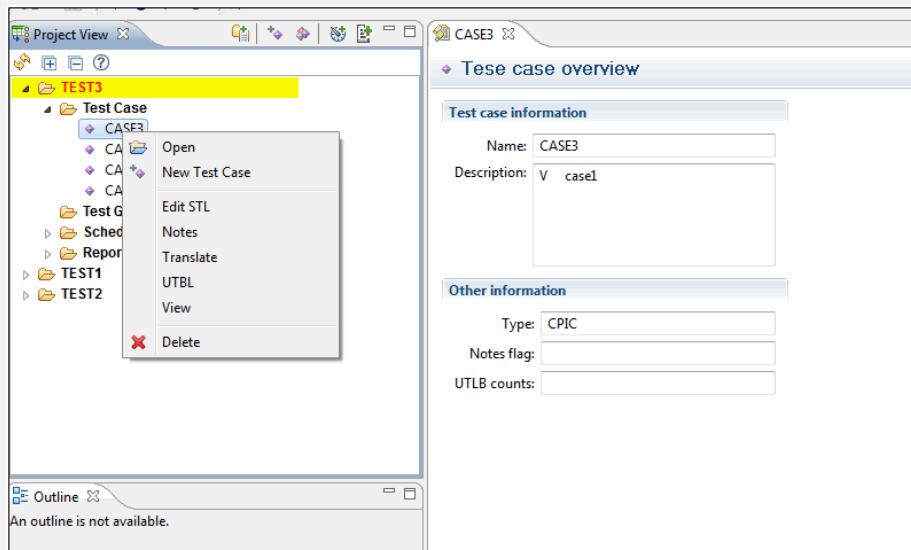
# IBM Workload Simulator for z/OS (WSIM)



## Regression and load test interactive z/OS applications

### What's new in WSIM V12.1...

- Integrated plug-in for CICS Explorer, RDz, and IMS Enterprise Explorer



### WSIM enables you to...

- Drive 3270 performance test workload on System z
- Broad protocol support
- SNA, CPI-C (LU 6.2), and enhanced TCP/IP support, Telnet 3270, 3270E, and 5250 clients, Telnet line mode network virtual terminal clients, Simple TCP and UDP clients, File transfer protocol (FTP) clients
- Multiple client applications that run on top of TCP/IP
- SNA LU simulation
- Test manager (WTM) guides the user through the test process.
- Extensive run-time, script-generating, and post-test utilities
- ISPF Interface
- Plug-in support for CICS Explorer, RDz, and IMS Enterprise Explorer

# CICS and PD Tools Solutions by Key Business Requirement

Solutions \ Requirement	Business Flexibility	IT Service Management	Governance & Compliance	Reduced TCO
CICS Deployment Assistant	√	√	√	√
CICS Interdependency Analyzer	√	√	√	√
CICS Transaction Gateway	√			√
CICS VSAM Transparency	√	√	√	√
CICS Configuration Manager	√	√	√	√
CICS Performance Analyzer	√	√	√	√
CICS VSAM Recovery		√	√	√
CICS Batch Application Control		√		√
IBM Session Manager		√	√	√
CICS Online Transmission Time Optimizer		√		√
Application Performance Analyzer for z/OS	√			√
Fault Analyzer for z/OS	√	√		√
Debug Tool for z/OS	√			√
File Manager for z/OS	√	√	√	√
Workload Simulator for z/OS	√	√	√	√

CICS Tools

PD Tools



## CICS TS V5.1 Evaluations. No Cost. No Fuss.

### *CICS Transaction Server for z/OS V5.1 Developer Trial*

- **Try-before-you-buy** the latest production ready edition of CICS Transaction Server
- **Zero-cost license**, no single version charging (SVC) period, no reason to wait
- **Easy ordering via IBM ShopzSeries**, with internet or physical delivery options

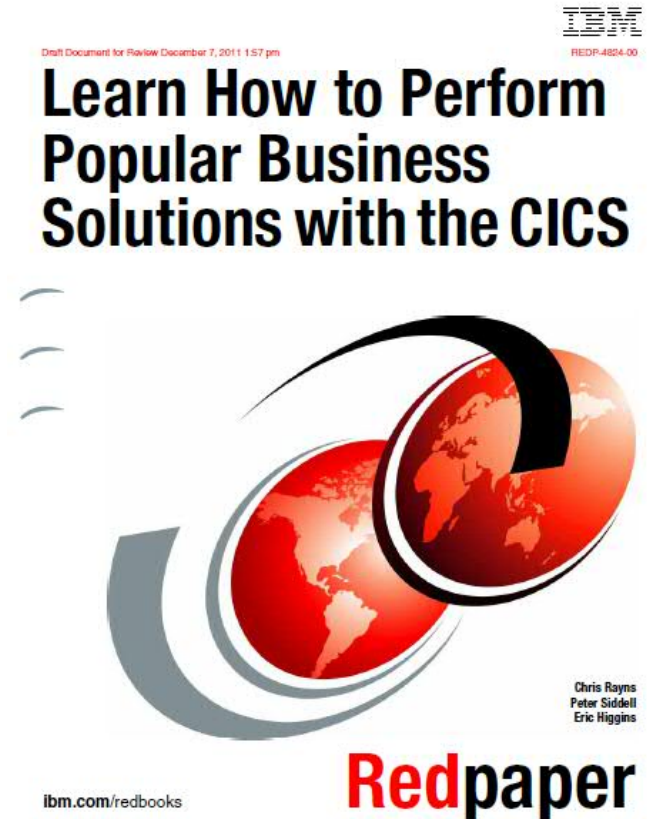
*Get ready for the cloud  
with CICS TS V5.1*

What's new with the Developer Trial?

- **Evaluate the value** of a CICS TS upgrade, before committing time and resources to a production migration project.
- **Explore all CICS TS V5.1 features** and benefits, in non-production environments only.
- **Decide to upgrade to CICS TS V5.1** - the latest production ready release of CICS TS that delivers major enhancements in five key areas

# GENAPP – SupportPac and Redpaper

- **GENAPP is available to customers as SupportPac CB12, at no extra cost**
  - Download from <http://www-01.ibm.com/support/docview.wss?rs=1085&uid=swg24031760>
- **There is a paper based on GENAPP with scenarios in this new IBM Redpaper**
  - Download from <http://www.redbooks.ibm.com/abstracts/redp4824.html?Open>



# Sources of Information

## ▪ Web

- CICS home page [ibm.com/cics](http://ibm.com/cics)
- CICS Tools home page [ibm.com/cics/tools/](http://ibm.com/cics/tools/)
- PD Tools site [ibm.com/software/awdtools/deployment/](http://ibm.com/software/awdtools/deployment/)
- CICS Tools trials [ibm.com/software/os/zseries/trials/cicstools/](http://ibm.com/software/os/zseries/trials/cicstools/)
- CICS Explorer home page [ibm.com/cics/explorer](http://ibm.com/cics/explorer)
- CICS Explorer download page <http://ibm.com/cics/explorer/download>

## ▪ Demos and animations

- CICS Explorer animation - <http://www.youtube.com/watch?v=-NzWwUi5ILw>
- CICS Explorer flash demo - featuring Threadsafe Analysis using the CICS PA, CICS IA, and CICS CM perspectives - <http://www.youtube.com/watch?v=Jk3Ydvl8lno>

## ▪ Other

- CICS Transaction Server in your SOA - Great source of links to more CICS ecosystem information - [ftp://ftp.software.ibm.com/software/http/cics/presentations/CICS\\_TS\\_in\\_your\\_SOA - Links - Issue 3.ppt](ftp://ftp.software.ibm.com/software/http/cics/presentations/CICS_TS_in_your_SOA_-_Links_-_Issue_3.ppt)

# Google CICS or check us out at:

 [ibm/developerworks/cicsdev](http://ibm/developerworks/cicsdev)

 [facebook.com/IBMCICS](https://facebook.com/IBMCICS)

 [twitter.com/IBM\\_CICS](https://twitter.com/IBM_CICS)

 [youtube.com/cicsfluff](https://youtube.com/cicsfluff)

 [youtube.com/cicsexplorer](https://youtube.com/cicsexplorer)



 [twitter.com/IBM\\_System\\_z](https://twitter.com/IBM_System_z)

 [CICS Explorer Forum](http://CICS Explorer Forum)  
[ibm.com/developerworks/forums/forum.jspa?forumID=1475&start=0](http://ibm.com/developerworks/forums/forum.jspa?forumID=1475&start=0)

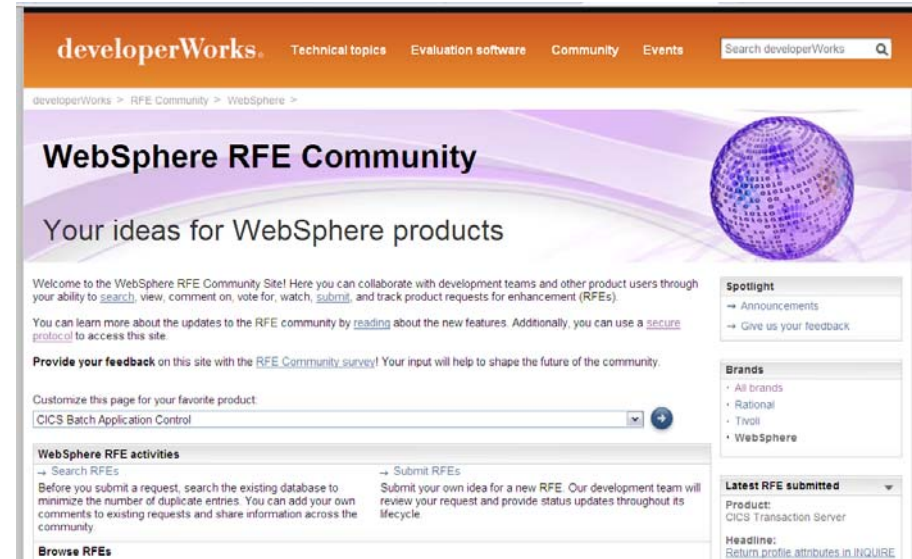


[CICS-L list Forum](http://CICS-L list Forum)  
[listserv.uga.edu/archives/cics-l.html](http://listserv.uga.edu/archives/cics-l.html)

# Raising new requirements with RFE

- You can now raise and track requirements using the new IBM RFE system for

- CICS Transaction Server
- CICS Explorer
- TXSeries
- WXTR
- IBM CICS Tools
- CICS Transaction Gateway
- PD Tools



- Existing FITS requirements are currently being processed, and will either be transferred to RFE or closed and returned.
- All brands <https://www.ibm.com/developerworks/rfe/> - select Brand: WebSphere
- WebSphere only [https://www.ibm.com/developerworks/rfe/?BRAND\\_ID=181](https://www.ibm.com/developerworks/rfe/?BRAND_ID=181)
- Select Product Family: Transaction Processing - for CICS Transaction Server, TXSeries, and WXTR
- Select Product Family: Enterprise Tooling - for the CICS Tools, CICS Transaction Gateway, and PD Tools
- Raise CICS Explorer base requirements against the Explorer component of CICS TS.
- Raise plug-in requirements against the Explorer component of related product.



A decorative graphic in the top left corner consists of several 3D cubes in various colors (red, pink, orange, black) arranged in a cluster.

## Session 13157

**Lunch and Learn: Live demo! New IBM CICS Tools and IBM Problem Determination Tools Efficiently Support the z/OS Ecosystem**

# Select Demonstration Screen Shots



## CICS Explorer Introduction

- **The following slides show basics for installing and customizing the CICS Explorer with the available tooling plug-ins**

← IBM Support Portal

Support &  
downloads

Bookmark this page

View my bookmarks

Feedback

Tags

Add a tag | Search all  
tags

Add a tag

My tags | All tags

View as cloud | list

# CICS Explorer downloads



## Downloadable files

### Abstract

This page will point you at the IBM CICS Explorer that's right for you

### Download Description

#### SCENARIO 1 - Upgrade to CICS Explorer V5.1

##### **You want to upgrade to CICS Explorer V5**

1. Back-up your existing CICS Explorer workspace!

Either download and install CICS Explorer V5.1 for Microsoft Windows



Or download and install CICS Explorer V5.1 for Linux



##### **You want to upgrade to CICS Explorer V5 SDK**

1. In your Eclipse IDE<sup>2</sup> add URL <http://public.dhe.ibm.com/software/htp/cics/updates/portfolio/5.1/5.1.0/> to *Window > Preferences > Install/Update > Available Software Sites*
2. Update your installation using *Help > Check for updates*

#### SCENARIO 2 - New CICS Explorer user

##### **You're a new user and want to use CICS Explorer for the first time<sup>3</sup>**

Either Download and install CICS Explorer V5.1 for Microsoft Windows



Or download and install CICS Explorer V5.1 for Linux



#### SCENARIO 3 - CICS Explorer with Eclipse

##### **You want to use your existing Eclipse environment with CICS Explorer**

### Rate this page:



Average rating 0 users

### Add comments

### Document information

[CICS Transaction Server](#)

Explorer

Software version:  
3.1, 3.2, 4.1, 4.2, 5.1

Operating system(s):  
Linux, Windows

Reference #:  
4033579

Modified date:  
2012-12-13

### Translate my page

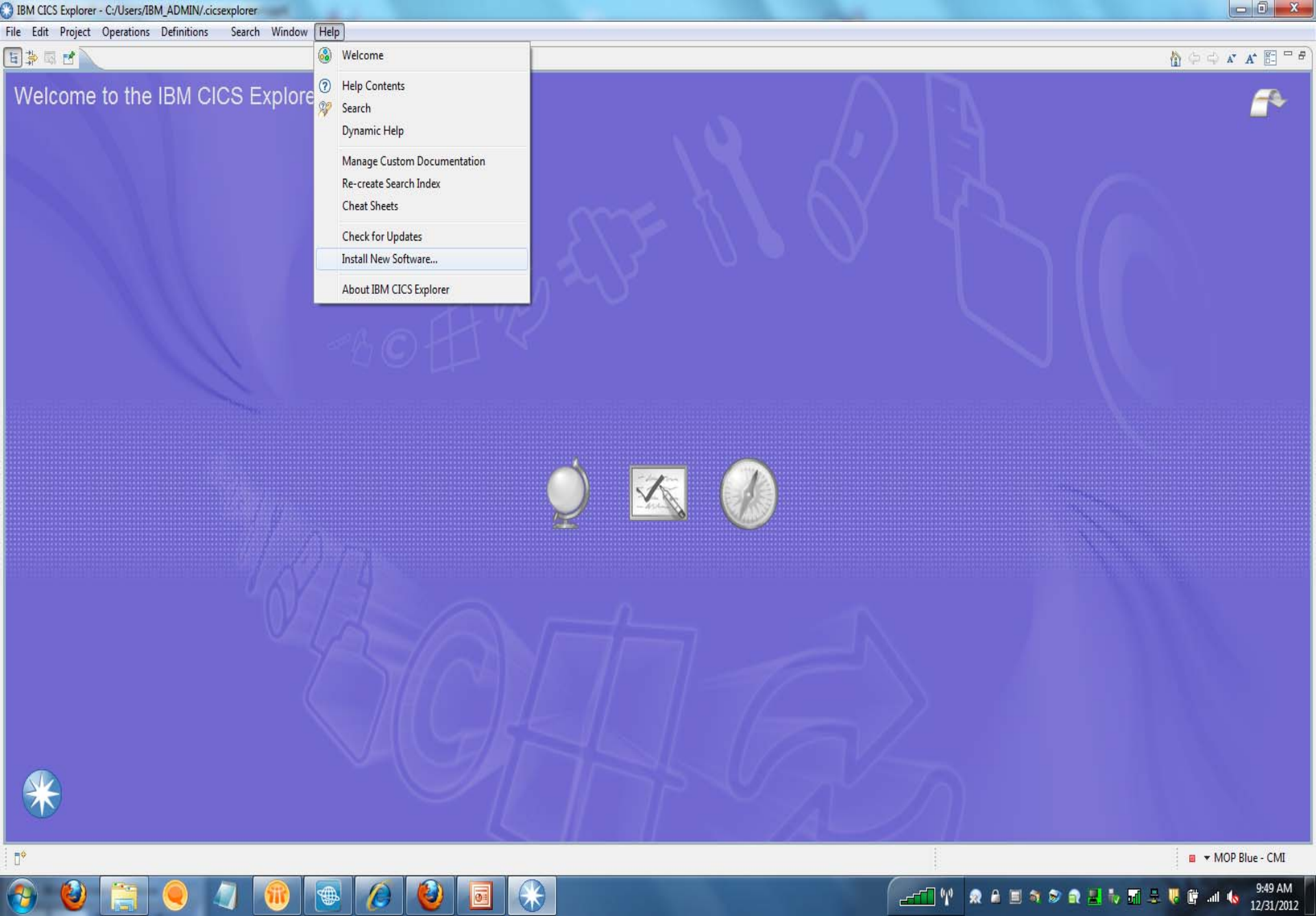
Select Language





Welcome to the IBM CICS Explorer





**Install**

### Available Software

Select a site or enter the location of a site.

Work with:  Add...

type filter text:

Name	Version
<input type="checkbox"/> There is no site selected.	

Details

Show only the latest versions of available software  Hide items that are already installed  
 Group items by category [What is already installed?](#)  
 Contact all update sites during install to find required software



### Available Software

Check the items that you wish to install.

Work with: IBM CICS Explorer Update Site - <http://public.dhe.ibm.com/software/hcp/cics/updates/portfolio/5.1/5.1.0/> Add...

Find more software by working with the "Available Software Sites" preferences.

type filter text

Name	Version
IBM CICS Tools	
IBM CICS Configuration Manager Plugin	
IBM CICS Configuration Manager	5.1.0.20121207-1016
IBM CICS Deployment Assistant Plugin	
IBM CICS Deployment Assistant Feature	5.1.0.0_201211291706
IBM CICS Interdependency Analyzer Plugin	
IBM CICS Interdependency Analyzer	5.1.0.20121212-1336
IBM CICS Performance Analyzer Plugin	
IBM CICS Performance Analyzer for z/OS	5.1.0.20121206-1133
IBM CICS Transaction Gateway Plugin	
IBM CICS Transaction Gateway plug-in for CICS Explorer	2.0.0.20121213-1607
IBM CICS VSAM Transparency Plugin (SupportPac)	
IBM CICS VSAM Transparency plug-in v2.1	2.1.0.201211301045
IBM Problem Determination Tools	
Application Performance Analyzer plug-in	
APA Cics Explorer Connection plug-in	12.1.2.201210011356
APA plug-in	12.1.2.201210011356
Debug Perspective for IBM CICS Explorer	
IBM Debug Perspective for CICS Explorer	12.1.1.201211290056

Select All Deselect All 22 items selected

Details

- Show only the latest versions of available software
- Group items by category
- Contact all update sites during install to find required software
- Hide items that are already installed

What is [already installed?](#)



< Back Next > Finish Cancel



### Connections

type filter text

- My Connections
  - APA (1)
  - CICS Deployment Assistant (3)
  - CICSplex SM Data Interface (3)
  - CICS Transaction Gateway (1)
  - CMCI (3)
  - Configuration Manager (3)
  - DTCN (1)
  - IA Collector (3)
  - Interdependency Analyzer (3)
  - Performance Analyzer (7)
  - Problem Determination Tools (1)
  - z/OS FTP (3)
  - z/OSMF (1)

Add...  
Edit...  
Delete  
Connect  
Disconnect

### Credentials

- Austin [DNET409]
- MOP Blue [SUC1115]

Add...  
Edit...  
Delete

Connections

- type filter text
- My Connections
    - APA (1)
      - DemoMVS APA
    - CICS Deployment Assistant (3)
    - CICSplex SM Data Interface (3)
    - CICS Transaction Gateway (1)
    - CMCI (3)
    - Configuration Manager (3)
    - DTCN (1)
    - IA Collector (3)
    - Interdependency Analyzer (3)
    - Performance Analyzer (7)
    - Problem Determination Tools (1)
      - DemoMVS PD tools
    - z/OS FTP (3)
    - z/OSMF (1)

Add...  
Edit...  
Delete  
Connect  
Disconnect

Credentials

- Austin [DNET409]
- MOP Blue [SUC1115]

Add...  
Edit...  
Delete

**Edit Problem Determination Tools Connection**

Specify the host, port, and any additional details for the new connection

Name: DemoMVS PD tools

Location

Host name: demomvs.demopkg.ibm.com

Port number: 2800

Additional Information

Default encoding: cp037

? Save and Connect Save and Close Cancel

### Connections

type filter text

- My Connections
  - APA (1)
    - DemoMVS APA
  - CICS Deployment Assistant (3)
  - CICSplex SM Data Interface (3)
  - CICS Transaction Gateway (1)
  - CMCI (3)
  - Configuration Manager (3)
  - DTCN (1)
  - IA Collector (3)
  - Interdependency Analyzer (3)
  - Performance Analyzer (7)
  - Problem Determination Tools (1)
    - DemoMVS PD tools
  - z/OS FTP (3)
  - z/OSMF (1)

### Credentials

Austin [DNET409]

MOP Blue [SUCI115]

Add... Edit... Delete

#### Edit Credentials

Specify a user ID and optional password

Credentials Name: Austin

User ID: DNET409

Password or Passphrase:

Save password

⚠ Saved passwords are stored on your computer in a file that is difficult, but not impossible, for an intruder to read.

OK Cancel

Server: CPSPM

- CICSDAX1 (6/6)
  - CICSPLX1 (10/12)
    - WLMMARY CPSPM (ACTIVE)
    - CICBRAC
    - CICSAORB
    - CICSAOR1 (CICSACB1)
    - CICSAOR2 (CICSACB2)
    - CICSAOR3 (CICSACB3)
    - CICSAOR4 (CICSACB4)
    - CICSAOR5 (CICSACB5)
    - CICSAOR6 (CICSACB6)
    - CICSAOR7 (CICSACB7)
    - CICSAOR8 (CICSACB8)
    - CICSCM (CICSCM)
    - CICSWUI (CPSMWUI)
    - AORBRCAC (AOR Group CAC BR teste)
    - AORGRP1 (AOR Group 1)
    - AORGRP2 (AOR Group 2)
    - AORGRP3 (AOR Group 3)
    - CICGRP01 (System Group for CICSAOR1)
    - CICGRP02 (System group for CICSAOR2)
    - CICGRP03 (System group for CICSAOR3)
    - CICGRP04 (System group for CICSAOR4)
    - CICGRP05 (System group for CICSAOR5)
    - EVNREGNS (Even Numbered Regions)
    - GRP0102 (Grupo aor 1 e 2)
    - GRP0103
    - GRP0104 (AOR2 +AOR3)
    - LKGRP (LK Group)
    - ODDREGNS (Odd Numbered AOR Regions)
    - SGSERASA (SYSTEM GROUP SERASA)
    - TESTREFR (AOR Group teste REFRESH)
    - WILLGRP (WILLIAM CREATE A CICS GROUP)
    - WLMAORGP (WLM Demo AOR Group - Target Regions)

CNX0211I Context: CICSPLX1. Resource: LOCFILE. 9 records collected at Dec 31, 2012 10:05:44 AM

Region	Name	Status	Open Status	Add	Browse	Delete	Read	Update	LSR Pool ID	DS Name
CICSAOR1	CUSTDATA	✓ ENABLED	CLOSED	ADDABLE	BROWSABLE	DELETABLE	READABLE	UPDATABLE	1	COMPTON.CIC...
CICSAOR1	CUSTFILE	✓ ENABLED	CLOSED	ADDABLE	NOTBROWSABLE	NOTDELETABLE	READABLE	UPDATABLE	1	SOADEMO.VSA...
CICSAOR2	CUSTDATA	✓ ENABLED	CLOSED	ADDABLE	BROWSABLE	DELETABLE	READABLE	UPDATABLE	1	SOAEMO.VSA...
CICSAOR3	CUSTFILE	✓ ENABLED	CLOSED	ADDABLE	BROWSABLE	DELETABLE	READABLE	UPDATABLE	1	CICSTS.V2R1.CI...
CICSAOR4	CUSTFILE								1	FILEMGR.REDB...
CICSAOR5	CUSTFILE								1	FILEMGR.REDB...
CICSAOR6	CUSTFILE								1	FILEMGR.REDB...
CICSAOR6	CUSTOMER								1	CICSTS.CICSAO...
CICSAOR7	CUSTFILE								5	FILEMGR.REDB...

Properties History Search

Connections

type filter text

- CICS Transaction Gateway
- CMCI (3)
- Configuration Manager
- DTCN (1)
- IA Collector (3)
- Interdependency Analyzer
- Performance Analyzer (7)
- Problem Determination Tools (1)
  - DemoMVS PD tools
- z/OS FTP (3)

Open Perspective

- < CICS DA >
- APA
- CICS CM
- CICS Cloud
- CICS DA
- CICS IA
- CICS PA
- CICS SM (default)
- CICS Transaction Gateway
- CVS Repository Exploring
- Debug
- Fault Analyzer
- File Manager
- IBM Session Manager Administration
- IBM Session Manager Operations
- Resource
- SM Administration
- Team Synchronizing
- WSim Explorer
- z/OS

Show all

OK Cancel

Region	Name	Status	Open Status	Add	Browse	Delete	Read	Update	LSR Pool ID	DS Name
CICSAOR1	CUSTDATA	✓ ENABLED	CLOSED	ADDABLE	BROWSABLE	DELETABLE	READABLE	UPDATABLE	1	COMPTON.CIC...
CICSAOR1	CUSTFILE	✓ ENABLED	CLOSED	ADDABLE	NOTBROWSABLE	NOTDELETABLE	READABLE	UPDATABLE	1	SOADEMO.VSA...
CICSAOR2	CUSTDATA	✓ ENABLED	CLOSED	ADDABLE	BROWSABLE	DELETABLE	READABLE	UPDATABLE	1	SOAEMO.VSA...
CICSAOR3	CUSTFILE	✓ ENABLED	CLOSED	ADDABLE	BROWSABLE	DELETABLE	READABLE	UPDATABLE	1	CICSTS.V2R1.CI...
CICSAOR4	CUSTFILE								1	FILEMGR.REDB...
CICSAOR5	CUSTFILE								1	FILEMGR.REDB...
CICSAOR6	CUSTFILE								1	FILEMGR.REDB...
CICSAOR6	CUSTOMER								1	CICSTS.CICSAO...
CICSAOR7	CUSTFILE								5	FILEMGR.REDB...

Credentials

- Austin [DNET409]
- MOP Blue [SUCI115]

Add... Edit... Delete

Connect Disconnect

## Use CICS and PD tools to Diagnose a real issue

- **The following slides show how CICS and problem determination tooling work together to resolve a real world issue**

DA Projects

- DEMOMVS - DA DemoMVS - DA [demomvs.demopkg.ibm.com]
  - CICS Coupling Facility Data Table Servers (1)
  - CICS Named Counter Servers (1)
  - CICSplexes (4)
  - CICSplex SM Web User Interface Servers (2)
  - CICS Regions - Managed by CICSplex SM (20)
    - CICDA01.region [CICSDAX1]
    - CICDA02.region [CICSDAX1]
    - CICDA03.region [CICSDAX1]
    - CICDA04.region [CICSDAX1]
    - CICDA05.region [CICSDAX1]
    - CICDA06.region [CICSDAX1]
    - CICSACB1.region [CICSPLX1]
    - CICSACB2.region [CICSPLX1]
    - CICSACB3.region [CICSPLX1]
    - CICSACB4.region [CICSPLX1]
    - CICSACB5.region [CICSPLX1]
    - CICSACB6.region [CICSPLX1]
    - CICSACB7.region [CICSPLX1]
    - CICSACB8.region [CICSPLX1]
    - CICSCM.region [CICSPLX1]
    - CICSPA01.region [DEMOPLX1]
    - CICSPA02.region [DEMOPLX1]
    - CICSPF01.region [DEMOPLX1]
    - CICSPT01.region [DEMOPLX1]
    - CICWKS96.region [DEMOPLX1]

CICSACB6: Region CICSACB1: Region

### Managed CICS Region

**Details**

Applid: CICSACB1 Job: CICSAOR1  
 Program: DFHSIP Version: 670  
 User: SYSSTC [MVS Image](#): DEMOMVS  
 DB2: MQ: WMQAMSTR  
 IMS:

**Start Policy**

Batch Job  
 Data set name:    
 Started Task  
 Start Command:

**CICSplex SM**

[CICSplex](#): CICSPLX1  
[CMAS](#): CPSMCM1  
 MAS: CICSAOR1

To Clone the CICS region use the:

**CICS connectivity**

Applid	MAS
CICSACB2	CICSAOR2

**Groups**

- GRP0102
- GRP0103
- ODDREGNS
- SGSERASA

Jobs

Job Name: CICSACB1 User: \* (1)

- CICSAOR1 - STC04861 (SYSSTC)

CICS Region

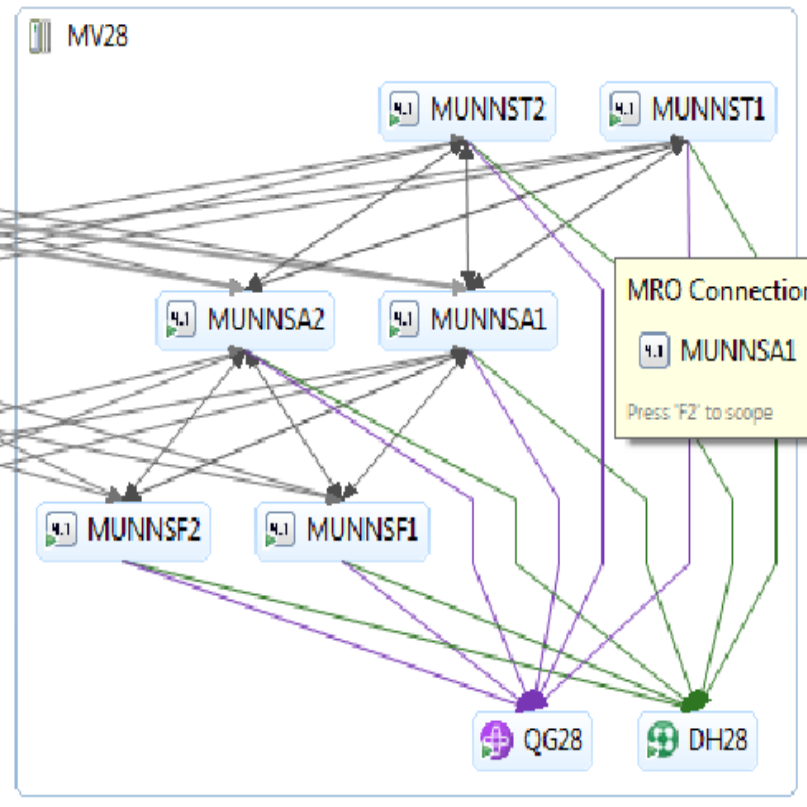
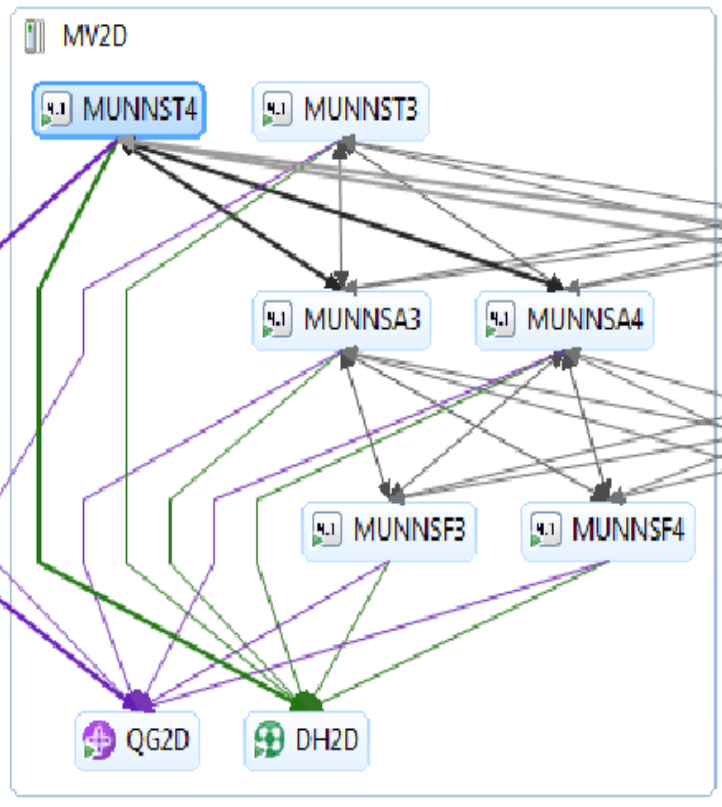
z/OS Job System Log z/OS Command Console Properties

Job ID: STC06969

IYXQFWM    IYXQGWM    IYXQDD1    MUNNSA3    MUNNSA4  
 MUNNST3    **MUNNST4**    IYXJGF1    IYXJGG1    IYXJGD1

System Log   z/OS Command   Console   Properties   Outline   Connections   Error Log   Host Connections

PLEX2



MRO Connection

MUNNSA1 <-> MUNNST1

Press 'F2' to scope

- ▶ CICS DAX1 (6/6)
- ▶ CICSPLX1 (10/12)
  - ▶ WLMMARY CPSM (ACTIVE)
    - ▶ CICBRCAC
    - ▶ CICSAORB
    - ▶ CICSAOR1 (CICSACB1)
    - ▶ CICSAOR2 (CICSACB2)
    - ▶ CICSAOR3 (CICSACB3)
    - ▶ CICSAOR4 (CICSACB4)
    - ▶ CICSAOR5 (CICSACB5)
    - ▶ CICSAOR6 (CICSACB6)
    - ▶ CICSAOR7 (CICSACB7)
    - ▶ CICSAOR8 (CICSACB8)
    - ▶ CICSADM (CICSADM)
    - ▶ CICSWUI (CPSMWUI)
  - ▶ AORBRCAC (AOR Group CAC BR teste)
  - ▶ AORGRP1 (AOR Group 1)
  - ▶ AORGRP2 (AOR Group 2)
  - ▶ AORGRP3 (AOR Group 3)
  - ▶ CICGRP01 (System Group for CICSAOR1)
  - ▶ CICGRP02 (System group for CICSAOR2)
  - ▶ CICGRP03 (System group for CICSAOR3)
  - ▶ CICGRP04 (System group for CICSAOR4)
  - ▶ CICGRP05 (System group for CICSAOR5)
  - ▶ EVNREGNS (Even Numbered Regions)
  - ▶ GRP0102 (Grupo aor 1 e 2)
  - ▶ GRP0103
  - ▶ GRP0104 (AOR2 + AOR3)
  - ▶ LKGRP (LK Group)
  - ▶ ODDREGNS (Odd Numbered AOR Regions)
  - ▶ SGSERASA (SYSTEM GROUP SERASA)
  - ▶ TESTREFR (AOR Group teste REFRESH)
  - ▶ WILLGRP (WILLIAM CREATE A CICS GROUP)
  - ▶ WLMAORGP (WLM Demo AOR Group - Target Regions)

CNX0211I Context: CICSAOR6. Resource: TASK. 2 records collected at Dec 31, 2012 11:44:48 AM

Task ID	Transaction ID	Run Status	User ID	Principal Facility	LU Name	Priority	Class Name	Current Suspend Time
0001178	SSP1	00 SUSPENDED	DNET409	Z006	ISZ006	1	DFHTCL01	0:01:31
0001185	SSP1	00 SUSPENDED	DDS0173			1	DFHTCL01	0:00:57

Property	Value
<b>Basic</b>	
Acttime	
Ainsfail	CONTINUE
Autoinst	NEVER
Bastrace	00000000
Botrsupd	10
Chetrace	00000000
CMAS Name	CPSMCM1
Comtrace	00000000
Connection Sample I	0
Cpsmver	0420



CICSplex Explor | CICSplex Repos | Configurations

Server: CPISM

Regions | Tasks | ISC/MRO Connections | Terminals | Files | Transactions | STC Properties | Atom Services | Programs

Transaction ID: SSP1 | Task ID: [ ]

CNX02111 Context: CICSOR6. Resource: TASK. 2 records collected at Dec 31, 2012 11:46:14 AM

Task ID	Transaction ID	Run Status	User ID	Principal Facility	LU Name	Priority	Class Name	Current Suspend Time
0001185	SSP1	SUSPENDED	DDS0173	Z007	ISZ007	1	DFHTCL01	0:00:24
0001186	SSP1	SUSPENDED	DNET409			1	DFHTCL01	0:00:21

- CICSDAX1 (6/6)
- CICSPLEX1 (10/12)
  - WLMMARY CPISM (ACTIVE)
  - CICBRCAC
  - CICSAORB
  - CICSAOR1 (CICSACB1)
  - CICSAOR2 (CICSACB2)
  - CICSAOR3 (CICSACB3)
  - CICSAOR4 (CICSACB4)
  - CICSAOR5 (CICSACB5)
  - CICSAOR6 (CICSACB6)
  - CICSAOR7 (CICSACB7)
  - CICSAOR8 (CICSACB8)
  - CICSCM (CICSCM)
  - CICSWUI (CPISWUI)
  - AORBRCAC (AOR Group CAC BR teste)
  - AORGRP1 (AOR Group 1)
  - AORGRP2 (AOR Group 2)
  - AORGRP3 (AOR Group 3)
  - CICGRP01 (System Group for CICSOR1)
  - CICGRP02 (System group for CICSOR2)
  - CICGRP03 (System group for CICSOR3)
  - CICGRP04 (System group for CICSOR4)
  - CICGRP05 (System group for CICSOR5)
  - EVNREGNS (Even Numbered Regions)
  - GRP0102 (Grupo aor 1 e 2)
  - GRP0103
  - GRP0104 (AOR2 + AOR3)
  - LKGRP (LK Group)
  - ODDREGNS (Odd Numbered AOR Regions)
  - SGSERASA (SYSTEM GROUP SERASA)
  - TESTREFR (AOR Group teste REFRESH)
  - WILLGRP (WILLIAM CREATE A CICS GROUP)
  - WLMMAORGP (WLM Demo AOR Group - Target Regions)

Properties | History | Search Results | Host Connections

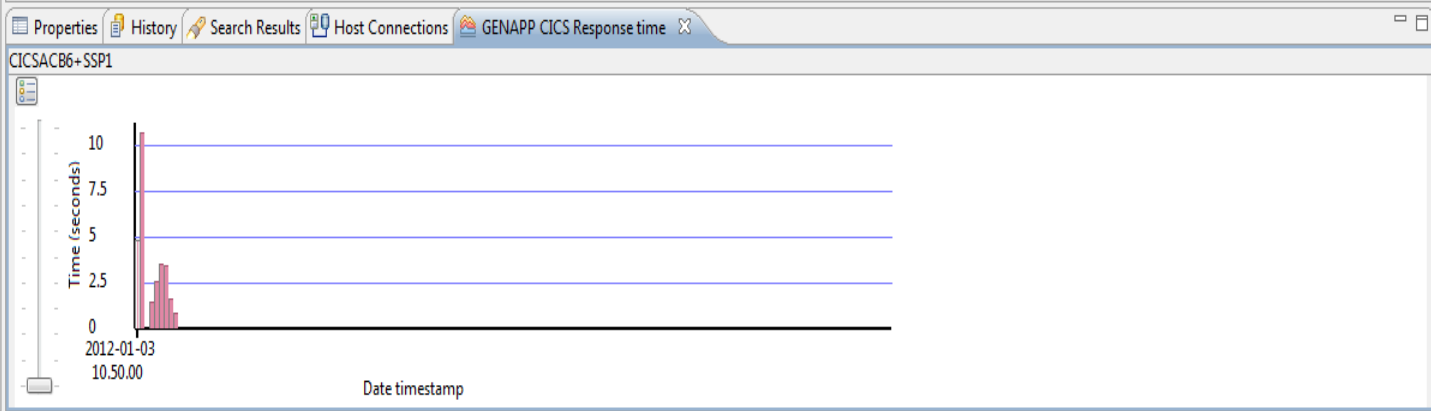
Property	Value

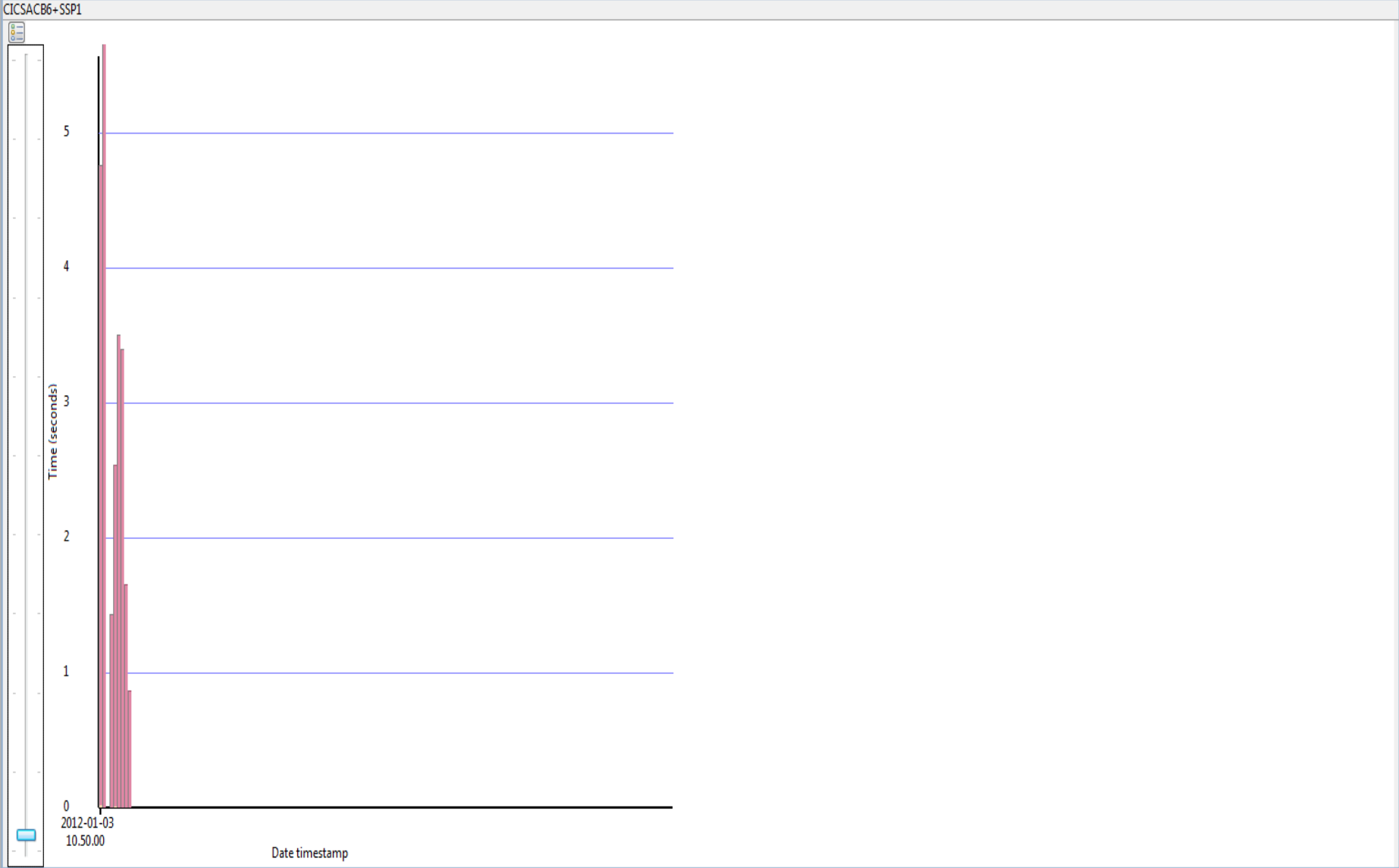


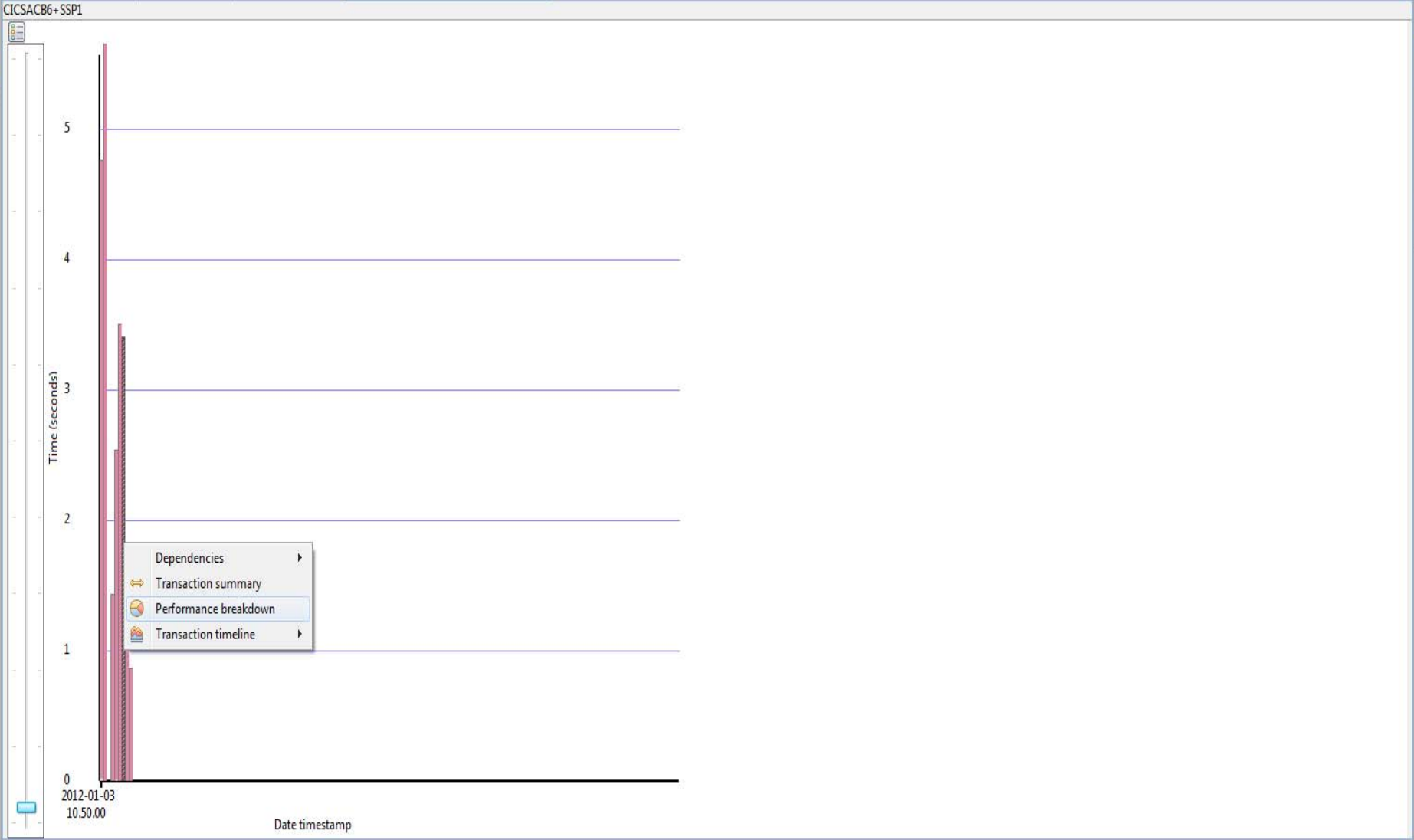
- Server: CPSM
- CICSDAX1 (6/6)
  - CICSPLX1 (10/12)
    - WLMMARY CPSM (ACTIVE)
    - CICBRCAC
    - CICSAORB
    - CICSAOR1 (CICSACB1)
    - CICSAOR2 (CICSACB2)
    - CICSAOR3 (CICSACB3)
    - CICSAOR4 (CICSACB4)
    - CICSAOR5 (CICSACB5)
    - CICSAOR6 (CICSACB6)
    - CICSAOR7 (CICSACB7)
    - CICSAOR8 (CICSACB8)
    - CICSCM (CICSCM)
    - CICSWUI (CPSMWUI)
    - AORBRCAC (AOR Group CAC BR teste)
    - AORGRP1 (AOR Group 1)
    - AORGRP2 (AOR Group 2)
    - AORGRP3 (AOR Group 3)
    - CICGRP01 (System Group for CICSAOR1)
    - CICGRP02 (System group for CICSAOR2)
    - CICGRP03 (System group for CICSAOR3)
    - CICGRP04 (System group for CICSAOR4)
    - CICGRP05 (System group for CICSAOR5)
    - EVNREGNS (Even Numbered Regions)
    - GRP0102 (Grupo aor1 e 2)
    - GRP0103
    - GRP0104 (AOR2 + AOR3)
    - LKGRP (LK Group)
    - ODDREGNS (Odd Numbered AOR Regions)
    - SGSERASA (SYSTEM GROUP SERASA)
    - TESTREFR (AOR Group teste REFRESH)
    - WILLGRP (WILLIAM CREATE A CICS GROUP)
    - WLMMAORGP (WLM Demo AOR Group - Target Regions)

CNX0211I Context: CICSAOR6. Resource: LOCTRAN. 1 records collected at Dec 31, 2012 11:50:53 AM

Region	Name	Status	Use Count	Program	Priority	Transaction Class	Purgeability	Dumping	Routing
CICSAOR6	SSP1	ENABLED	11	LGTESTP1	1	DFHTCL01	NOTPURGEABLE	TRANDUMP	STATIC







Start Date=2012-01-03, Start time=13.00.00, Applid=CICSACB6, Transaction ID=SSP1

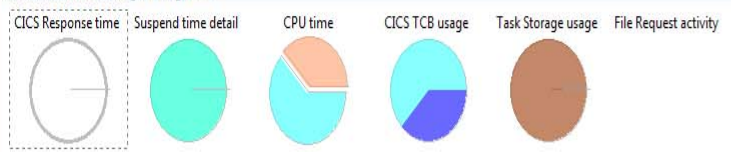
Start Date=2012-01-03, Start time=13.00.00, Applid=CICSACB6, Transaction ID=SSP1

Start Date=2012-01-03, Start time=13.00.00, Applid=CICSACB6, Transaction ID=SSP1

Transaction response time (average)



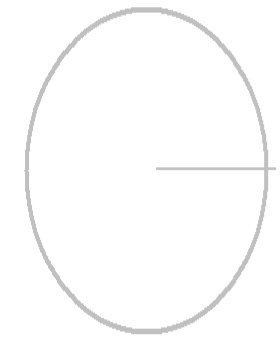
Performance averages at a glance



CICS Response time (averages)

2 transaction(s): 2 TCB mode switches (average). 3.390625 seconds average response time per transaction.

Response measurement	Time (avg)	Count (avg)	%Response ...	%Relative
CICS Response time	3.390625		-	-
User Dispatch time	0.001100	3	-	-
User CPU time	0.000981	3	-	89%
Suspend time	3.389525	3	100%	100%
Dispatch wait time	0.000011	2	-	-



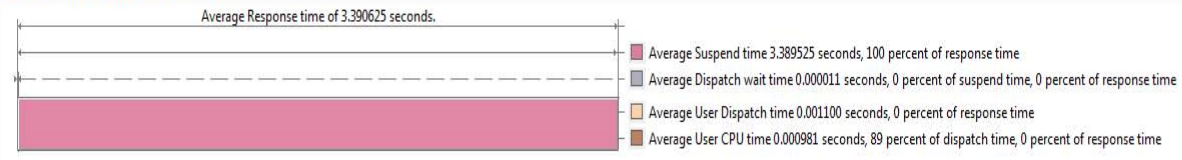
- Restrict tree nodes to those applicable to visible chart.
- Include available non-zero values only

Start Date=2012-01-03, Start time=13.00.00, Applid=CICSACB6, Transaction ID=SSP1

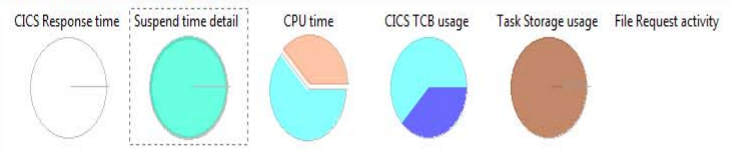
Start Date=2012-01-03, Start time=13.00.00, Applid=CICSACB6, Transaction ID=SSP1

Start Date=2012-01-03, Start time=13.00.00, Applid=CICSACB6, Transaction ID=SSP1

Transaction response time (average)

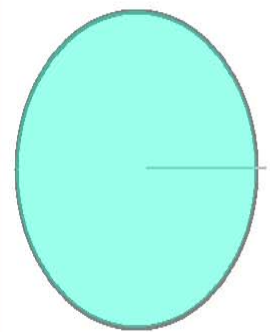


Performance averages at a glance



Suspend time detail (averages)

2 transaction(s): 3.389525 average suspend time per transaction.



Suspend time component	Time (avg)	Count (avg)	%Suspend t...	%Relative
▲ Suspend time	3.389525	3	-	-
▲ I/O wait time	3.389506	3	100%	100%
■ Terminal control I/O wait time	3.389506	0	100%	100%
▲ Other wait time	0.000019	1	-	-
■ First dispatch delay time	0.000012	1	-	62%
■ Change-TCB mode delay time	0.000007	2	-	38%
■ Uncaptured wait time	0	0	-	-

- Restrict tree nodes to those applicable to visible chart.
- Include available non-zero values only

Records Project Explorer

Detail for Transaction summary

Applid  ▶ ✕

- CICSACB6
- IYDZEJ07

Transaction ID  ▶ ✕

- CATA ( CICSACB6 3)
- CATD ( CICSACB6 4)
- CECI ( CICSACB6 1)
- CEDA ( CICSACB6 5)
- CEDF ( CICSACB6 1)

Transaction summary tree

- 2012-01-03
- 2011-12-26
- 2011-11-16

Transaction summary (160/160 rows) Transaction Classes (1/1 rows)

Maximum active transactions in class reached Applid=CICSACB6, Version Release Modification=670, Interval Number=0, Type=REQ, MVS ID=MVSA, Transaction class=DFHTCL09 Specific date: 2012-01-03 15.06.25

Start Date	Start time	Applid	MVS ID	Version R...	Type	Interval ...	Interval ...	Transacti...	Attaches	Purged i...	No longe...	Accepte...	Accepte...	Purged ...	Max active	Purge thr...	Transacti...	
2012-01-03	15.06.25	CICSACB6	MVSA	670	REQ			0	DFHTCL09	67	0	3	64	3	0	1	0	1

Alerts

Alert description	Start D...	Start time	Applid	MVS ID	Resource name	Resource ...	Actual	Threshold	Type	Version R...	Interval ...	Interval ...
<b>Critical</b>												
Maximum active transactions in class reached	2012-01...	15.06.25	CICSACB6	MVSA	Tclass Name	DFHTCL09	64	>10	REQ	670		0
Maximum active transactions in class reached	2012-01...	15.06.17	CICSACB6	MVSA	Tclass Name	DFHTCL09	64	>10	REQ	670		0
DB2 pool thread waits	2011-11...	13.18.00	IYDZEJ07	MV2F	DB2CONN Name	DB2CONN1	150	>5	INT	670	798	00.01.00
Enqueues waited in ENQ pool - local	2011-11...	13.18.00	IYDZEJ07	MV2F	ENQ Pool ID	EXECADDR	50	>25	INT	670	798	00.01.00
Maximum active transactions in class reached	2011-11...	12.41.00	IYDZEJ07	MV2F	Tclass Name	DFHTCL09	15	>10	INT	670	761	00.01.00
Maximum active transactions in class reached	2011-11...	12.42.00	IYDZEJ07	MV2F	Tclass Name	DFHTCL09	21	>10	INT	670	762	00.01.00
DB2 pool thread waits	2011-11...	13.16.00	IYDZEJ07	MV2F	DB2CONN Name	DB2CONN1	148	>5	INT	670	796	00.01.00
Enqueues waited in ENQ pool - local	2011-11...	13.16.00	IYDZEJ07	MV2F	ENQ Pool ID	EXECADDR	37	>25	INT	670	796	00.01.00
DB2 pool thread waits	2011-11...	13.17.00	IYDZEJ07	MV2F	DB2CONN Name	DB2CONN1	75	>5	INT	670	797	00.01.00
<b>Warnings</b>												

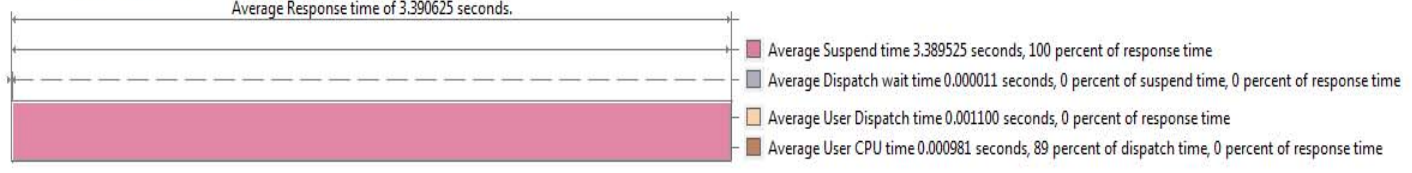


Start Date=2012-01-03, Start time=13.00.00, Applid=CICSACB6, Transaction ID=SSP1

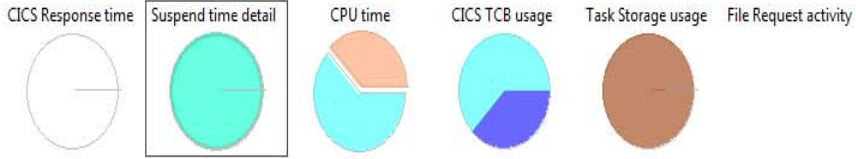
Start Date=2012-01-03, Start time=13.00.00, Applid=CICSACB6, Transaction ID=SSP1

Start Date=2012-01-03, Start time=13.00.00, Applid=CICSACB6, Transaction ID=SSP1

Transaction response time (average)

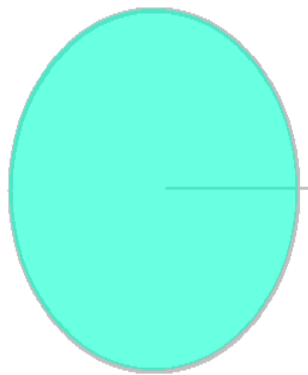


Performance averages at a glance



Suspend time detail (averages)

2 transaction(s): 3.389525 average suspend time per transaction.



Suspend time component	Time (avg)	Count (avg)	%Suspe
Suspend time	3.389525	3	
I/O wait time	3.389506		
Terminal control I/O wait time	3.389506	0	100% 100%
Other wait time	0.000019		- -
First dispatch delay time	0.000012	1	- 62%
Change-TCB mode delay time	0.000007	2	- 38%
Uncaptured wait time	0		- -

- Dependencies
- Transaction summary
- Transaction timeline
- Dependencies
- Used By Programs
- Used By Transactions
- Uses Resources
- Asset details

- Restrict tree nodes to those applicable to visible chart.
- Include available non-zero values only

Transaction(SSP1) in Region CICSACB6 (21) Programs using INSERT - POLICY

Resources used	By Resource	
<ul style="list-style-type: none"><li>Program (8)<ul style="list-style-type: none"><li>LGAPDB01 (1)</li><li>LGAPOL01 (1)</li><li>LGAPVS01 (1)</li><li>LGIPDB01 (1)</li><li>LGIPOL01 (1)</li><li>LGIPOL01 (1)</li><li>LGTESTP1 (1)</li><li>LGUPDB01 (1)</li><li>LGUPOL01 (1)</li></ul></li><li>Transaction (1)</li><li>MAPSET (1)</li><li>CONDITION (1)</li><li>Map (1)</li><li>AID (1)</li><li>TEXT (1)</li><li>(1)</li><li>Table (2)<ul style="list-style-type: none"><li>MOTOR (2)<ul style="list-style-type: none"><li>INSERT</li><li>UPDATE</li></ul></li><li>POLICY (3)<ul style="list-style-type: none"><li>INSERT</li><li>SELECT</li><li>UPDATE</li></ul></li></ul></li><li>CONTAINER (1)<ul style="list-style-type: none"><li>ICOM-Data (1)<ul style="list-style-type: none"><li>GET</li></ul></li></ul></li><li>CHANNEL (1)</li><li>Cursor (1)</li><li>File (1)<ul style="list-style-type: none"><li>KSDSPOLY (1)<ul style="list-style-type: none"><li>WRITE</li></ul></li></ul></li></ul>	<ul style="list-style-type: none"><li>LGAPDB01</li></ul>	<ul style="list-style-type: none"><li>CICSACB6<ul style="list-style-type: none"><li>SSP1<ul style="list-style-type: none"><li>LGTESTP1</li></ul></li></ul></li></ul>

Transaction(SSP1) in Region CICSACB6 (21) Programs using SSP1

Resources used

- Program (8)
  - LGAPDB01 (1)
  - LGAPOL01 (1)
  - LGAPVS01 (1)
  - LGIPDB01 (1)
  - LGIPOL01 (1)
  - LGTESTP1 (1)
  - LGUPDB01 (1)
  - LGUPOL01 (1)
- Transaction (1)
  - SSP1 (1)
- MAPSET (1)
- CONDITION (1)
- Map (1)
- AID (1)
- TEXT (1)
- (1)
- Table (2)
  - MOTOR (2)
    - INSERT
    - UPDATE
  - POLICY (3)
    - INSERT
    - SELECT
    - UPDATE
- CONTAINER (1)
  - ICOM-Data (1)
    - GET
- CHANNEL (1)
- Cursor (1)
- File (1)
  - KSDSPOLY (1)
    - WRITE

- Create Event
- Used By Regions
- Show Tasks
- Visualization
- Used By Applications
- Used By Programs
- Used By Transactions
- Show Affinities By Type
- Show Command Flow runs
- Uses Resources
- Threadsafe Report
- Transaction summary
- Transaction timeline
- Asset details

By Resource

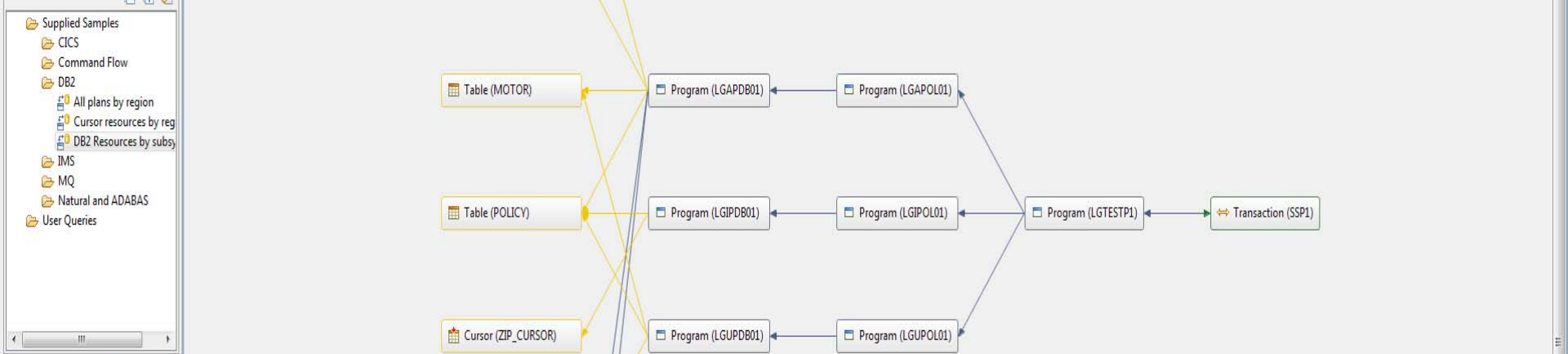
- LGTESTP1

Programs using SSP1

- CICSACB6
  - SSP1
    - LGTESTP1

- ERIC1
- ERIC2
- GENAPP1
- IA31DATA
- IA32DATA
- IVPTST
- TVMTEST

- Supplied Samples
- CICS
- Command Flow
- DB2
  - All plans by region
  - Cursor resources by reg
  - DB2 Resources by subxy
- IMS
- MQ
- Natural and ADABAS
- User Queries



- Search Region
- NACT
  - OMEG
  - SSC1
  - SSP1
  - SSP2
  - SSP3
  - SSP4

Collection IDs (9)

- AFFTDATA
- ERIC1

Queried Regis Appli User IA O Scan Repo

Supplied Samples

- CICS
  - Affinities
  - Exits
  - General
    - All programs using files
    - All transactions by region
    - All transactions using files
    - Commands in QR mode by program
    - Programs last used before a given date
    - Resource usage by program
  - TS41 Migration
  - Threadsafe
    - All programs that issue a GETMAIN SHARED
    - All programs that issue a GETMAIN
    - All programs that issue a LOAD
    - All programs that issue an ADDRESS CWA
    - All programs that issue an EXTRACT EXIT
    - All programs which may have threadsafe integrity issues
  - CICS Commands by TCB mode and program
  - DB2 Commands by TCB mode and program
  - Dynamic COBOL calls by TCB mode And Program
  - IMS Commands by TCB mode and program
  - MQ Commands by TCB mode and program
- Upgrades
- Webservices
- Command Flow
- DB2
  - All plans by region

\*Show Resources Affinities Report View Report Browser Resource Visualiza

All transactions using files (109)

- TRANSID (ECDA) (1)
  - Resource type (FILE) (2)
    - ECATALOG
    - EQADPFMB
- TRANSID (ECDB) (1)
  - Resource type (FILE) (2)
    - ECATALOG
    - EQADPFMB
- TRANSID (ECDC) (1)
  - Resource type (FILE) (2)
    - ECATALOG
    - EQADPFMB
- TRANSID (ECDD) (1)
  - Resource type (FILE) (2)
    - ECATALOG
    - EQADPFMB

Used By

Programs using File(ECATALOG) in all regions (10)

- ECATALOG
  - ECAT30 Endbr,Read,Read next,Startbr
  - ECAD10 Write
  - ECWORKR Read,Read for update,Rewrite
  - ECAT35 Read for update,Rewrite,Unlock

Transaction(SSP1) in Region CICSACB6 (21)

Resources used

- Program (8)
  - LGAPDB01 (1)
  - LGAPOL01 (1)
  - LGAPVS01 (1)
  - LGIPDB01 (1)
  - LGIPOL01 (1)
  - LGTESTP1 (1)
  - LGUPDB01 (1)
  - LGUPOL01 (1)
- Transaction (1)
  - SSP1 (1)
- MAPSET (1)
- CONDITION (1)
- Map (1)
- AID (1)
- TEXT (1)
- (1)

By Resource

- LGTESTP1

Programs using SSP1

- CICSACB6
  - SSP1
    - LGTESTP1

STC Vi

APA Observations List (CAZO) - Remote

ReqNum	Owned By	Description	Job Name	Date/Time	Samples	Status	Del Days
0560	DNET409		CICSAOR6	Jan-17 15:34	20,000	Ended	Keep
0559	DDS1687	Focus on SSP 1 bn	CICSAOR6	Jan-16 14:18	2,000	Ended	Keep
0558	DDS1687		CICSAOR6	Jan-16 14:02	1,000	Ended	Keep
0557	YS028	Prueba de db2 connect contra DIST	DSNADIST	Jan-14 10:45	60	Ended	Keep
0556	YS028	Prueba de db2 connect sin CDB2	DSNADBM1	Jan-14 10:43	5,000	Ended	Keep
0555	YS028	Prueba de db2 connect sin CDB2	DSNAMSTR	Jan-14 10:38	5,000	Ended	Keep
0554	YS028	Prueba de db2 connect sin CDB2	DSNADIST	Jan-11 05:30	60	Ended	Keep
0549	YS028	Prueba de db2 connect	DSNADIST	Dec-18 11:12	60	Ended	Keep
0544	YS028	Prueba de DB2	LISCLAJ	Dec-18 09:28	177	Ended	Keep
0541	DNET461	Carina	CICSAOR5	Dec-17 12:51	50,000	Ended	Keep
0540	NM16144	Vene	VALPA2	Dec-14 14:52	15,000	Ended	Keep
0539	YS028	Prueba de db2 connect	DSNADIST	Dec-13 07:15	60	Ended	Keep
0535	NM16144	Reporte por 0c4 vene	VALPA1	Dec-12 07:45	1,000	Ended	Keep
0526	DNET461	pru	DNET461X	Dec-11 14:08	7,000	Steps	Keep

STC Pr

Property Value

DSNHLQ APA.V12R1

Job CAZO

Started 2013-01-19 1

Sysplex CAZPLEX

Version 12.10F

Details (0560) Reports (0560)

- C02 - CPU Usage by Module
- C03 - CPU Usage by Code Slice
- C04 - CPU Usage Timeline
- C05 - CPU Usage Task/Category
- C06 - CPU Usage Task/Module
- C07 - CPU Usage by Procedure
- C08 - CPU Referred Attribution
- C09 - CPU Usage by PSW/ObjCode
- D - DASD I/O Analysis
- W - CPU WAIT Analysis
  - W01 - Wait Time by Task/Category
  - W02 - Wait Time by Task/Module
  - W03 - Wait Time Referred Attribution
  - W04 - Wait Time by Task ENQ/RESERVE
  - W05 - Wait Time by Tape DDNAME
- E - CICS Measurement
  - E01 - CICS Session Statistics
  - E02 - CICS CPU and Use Counts by Pgm
  - E03 - CICS CPU Usage by Txn
  - E04 - CICS Mean Service Time by Txn
  - E05 - CICS Total Service Time by Txn**
  - E06 - CICS Service Time by Task Id
  - E07 - CICS Wait by Txn
  - E08 - CICS Mean Service Time by Trm
  - E09 - CICS Total Service Time by Trm
  - E10 - CICS Mean Service Time by Usr
  - E11 - CICS Total Service Time by Usr
  - E12 - CICS CPU/Service Time by Transaction
- F - DB2 Measurement
- G - Coupling Facility
- J - Java Measurement

E05 Options

Option Value

Levels 9

E05: CICS Total Service Time by Txn (0560/CICSAOR6)

E05: CICS Total Service Time by Txn (0560/CICSAOR6)

Name	NTXns	Description	Error	Execution	Suspend	Delay	Service
CSSY	3		±58.8%	0.000	359.940	0.000	359.940
CINB	1		±99.9%	0.000	119.980	0.000	119.980
CONL	1		±99.9%	0.000	119.980	0.000	119.980
CINT	1		±99.9%	0.000	119.980	0.000	119.980
CSNC	1	IRC connection manager	±99.9%	0.000	119.980	0.000	119.980
CSKL	1	TCP/IP Listener	±99.9%	0.000	119.980	0.000	119.980
CFOR	1		±99.9%	0.000	119.980	0.000	119.980
CISM	1		±99.9%	0.000	119.980	0.000	119.980
CISR	1		±99.9%	0.000	119.980	0.000	119.980
CSHO	1	Scheduler service	±99.9%	0.000	119.980	0.000	119.980
CEX2	1	CICS/DB2 Service Transaction	±99.9%	0.000	119.980	0.000	119.980
COIE	1		±99.9%	0.011	119.956	0.011	119.980
COI0	1		±99.9%	0.000	119.980	0.000	119.980
CSNE	1	VTAM node abnormal	±99.9%	0.000	119.980	0.000	119.980
CISP	1		±99.9%	0.000	119.980	0.000	119.980
CISE	1		±99.9%	0.000	119.980	0.000	119.980
CFQS	1	RLS Quiesce	±99.9%	0.000	119.980	0.000	119.980
CEPF	1		±99.9%	0.000	119.980	0.000	119.980
CSTP	1		±99.9%	0.000	119.980	0.000	119.980
CEPM	1		±99.9%	0.000	119.980	0.000	119.980
CSOL	1	TCPIP Listener	±99.9%	0.000	119.980	0.000	119.980
SSPT	4		±50.0%	0.000	78.610	0.000	78.610
- LGTESTP1		CICS Program		0.000	78.610	0.000	78.610
- CICS		System Services		0.000	78.610	0.000	78.610
- ZCIIWAIT		wait on Terminal I/O		0.000	78.610	0.000	78.610
CSAC	1	Abnormal conditio	±99.9%	0.005	0.000	0.000	0.005
ECAT	1		±99.9%	0.000	0.005	0.000	0.005

- [-] CICSDAI1 (6/6)
- [-] CICSPLX1 (10/12)
- [-] WLMARY CPISM (ACTIVE)
- [-] CIBCRCAC
- [-] CICSAORB
- [-] CICSAOR1 (CICSACB1)
- [-] CICSAOR2 (CICSACB2)
- [-] CICSAOR3 (CICSACB3)
- [-] CICSAOR4 (CICSACB4)
- [-] CICSAOR5 (CICSACB5)
- [-] CICSAOR6 (CICSACB6)
- [-] CICSAOR7 (CICSACB7)
- [-] CICSAOR8 (CICSACB8)
- [-] CICSOM (CICSACM)
- [-] CICSWUI (CPSMWUI)
- [-] AORBRCAC (AOR Group CAC BR teste)
- [-] AORGRP1 (AOR Group 1)
- [-] AORGRP2 (AOR Group 2)
- [-] AORGRP3 (AOR Group 3)
- [-] CICGRP01 (System Group for CICSAOR1)
- [-] CICGRP02 (System group for CICSAOR2)
- [-] CICGRP03 (System group for CICSAOR3)
- [-] CICGRP04 (System group for CICSAOR4)
- [-] CICGRP05 (System group for CICSAOR5)
- [-] EVNREGNS (Even Numbered Regions)
- [-] GRP0102 (Grupo aor 1 e 2)
- [-] GRP0103
- [-] GRP0104 (AOR2 +AOR3)
- [-] LKGRP (LK Group)
- [-] ODDREGNS (Odd Numbered AOR Regions)
- [-] SCSERASA (SYSTEM GROUP SERASA)
- [-] TESTREFR (AOR Group teste REFRESH)
- [-] WILLGRP (WILLIAM CREATE A CICS GROUP)
- [-] WLMARGRP (WLM Demo AOR Group - Target Regions)

Context: CICSOR6, Resource: PROGRAM, 25 records collected at Jan 22, 2013 10:02:47 AM

Region	Name	Status	Use Count	Concurrent Use...	Language	Share Status	CEDF Status	NEWCOPY Status
CICSAOR6	LGACDB01	✓ ENABLED	0	0	LE370	PRIVATE	CEDF	NOTREQUIRED
CICSAOR6	LGACUS01	✓ ENABLED	0	0	COBOL	PRIVATE	CEDF	NOTREQUIRED
CICSAOR6	LGACVS01	✓ ENABLED	0	0	COBOL	SHARED	CEDF	NOTREQUIRED
CICSAOR6	LGAPB01	✓ ENABLED	0	0	COBOL	PRIVATE	NOCEDF	NOTREQUIRED
CICSAOR6	LGAPOL01	✓ ENABLED	0	0	COBOL	PRIVATE	CEDF	NOTREQUIRED
CICSAOR6	LGAPVS01	✓ ENABLED	0	0	COBOL	PRIVATE	CEDF	NOTREQUIRED
CICSAOR6	LGDPB01	✓ ENABLED	0	0	COBOL	PRIVATE	CEDF	NOTREQUIRED
CICSAOR6	LGDPOL01	✓ ENABLED	0	0	COBOL	PRIVATE	CEDF	NOTREQUIRED
CICSAOR6	LGDPVS01	✓ ENABLED	0	0	COBOL	PRIVATE	CEDF	NOTREQUIRED
CICSAOR6	LGICDB01	✓ ENABLED	1	0	COBOL	PRIVATE	CEDF	NOTREQUIRED
CICSAOR6	LGICUS01	✓ ENABLED	1	0	COBOL	PRIVATE	CEDF	NOTREQUIRED
CICSAOR6	LGICVS01	✓ ENABLED	0	0	COBOL	PRIVATE	CEDF	NOTREQUIRED
CICSAOR6	LGIPB01	✓ ENABLED	22	0	COBOL	PRIVATE	CEDF	NOTREQUIRED
CICSAOR6	LGIPOL01	✓ ENABLED	22	0	COBOL	PRIVATE	CEDF	NOTREQUIRED
CICSAOR6	LGIPVS01	✓ ENABLED	0	0	COBOL	PRIVATE	CEDF	NOTREQUIRED
CICSAOR6	LGSETUP	✓ ENABLED	0	0	COBOL	PRIVATE	CEDF	NOTREQUIRED
CICSAOR6	LGSTSQ	✓ ENABLED	0	0	COBOL	PRIVATE	CEDF	NOTREQUIRED
CICSAOR6	LGTESTC1	✓ ENABLED	2	0	COBOL	PRIVATE	CEDF	NOTREQUIRED
CICSAOR6	LGTESTP1	✓ ENABLED	28	0	COBOL	PRIVATE	CEDF	NOTREQUIRED
CICSAOR6	LGTESTP2	✓ ENABLED	0	0	COBOL	PRIVATE	CEDF	NOTREQUIRED
CICSAOR6	LGTESTP3	✓ ENABLED	5	0	COBOL	PRIVATE	CEDF	NOTREQUIRED
CICSAOR6	LGTESTP4	✓ ENABLED	0	0	COBOL	PRIVATE	CEDF	NOTREQUIRED
CICSAOR6	LGUPB01	✓ ENABLED	0	0	COBOL	PRIVATE	CEDF	NOTREQUIRED
CICSAOR6	LGUPOL01	✓ ENABLED	0	0	COBOL	PRIVATE	CEDF	NOTREQUIRED
CICSAOR6	LGUPVS01	✓ ENABLED	0	0	COBOL	PRIVATE	CEDF	NOTREQUIRED

- Open
- New Copy
- Phase In
- Discard
- Enable
- Disable
- Copy Ctrl+C
- DTCN
- Update profile
- Manage profile...

Properties Error Log Host Connections DTCN Local Profiles DTCN Server Profiles DTSP Profile

Owner	Status	Tran...	Ter...	Load Module	Complie Unit	User Id	Sess...	Session Addr...	Port#	Test ...	Level	Commands File	Preference File
DDS1687	Active		Z002	*	LGTESTP1	DDS1687	TCP	9.55.177.75	8006	TEST	ERROR	*	*
DNET047	Inactive		Z002	CD*	CD*	DNET047	MFI	2002		TEST	ALL	*	*
DNET246	Inactive		Z002	CDAT1	*	DNET246	MFI	2002		TEST	ERROR	*	*
DNET249	Inactive			*	CDAT2		MFI	0073		TEST	ALL	*	*
DNET409	Active	SSC1	Z004			DNET409	TCP	9.77.133.203	8001	TEST	ALL	*	*

### Profile Overview

Local 1 Local 2 Local 3

**General information**

Name: Local 1  
 Description: Debug LGTESTP1  
 Profile owner user ID: DDS1687

**Pattern matching resources**

Resources to debug

Transaction Id: Terminal Id: Z002

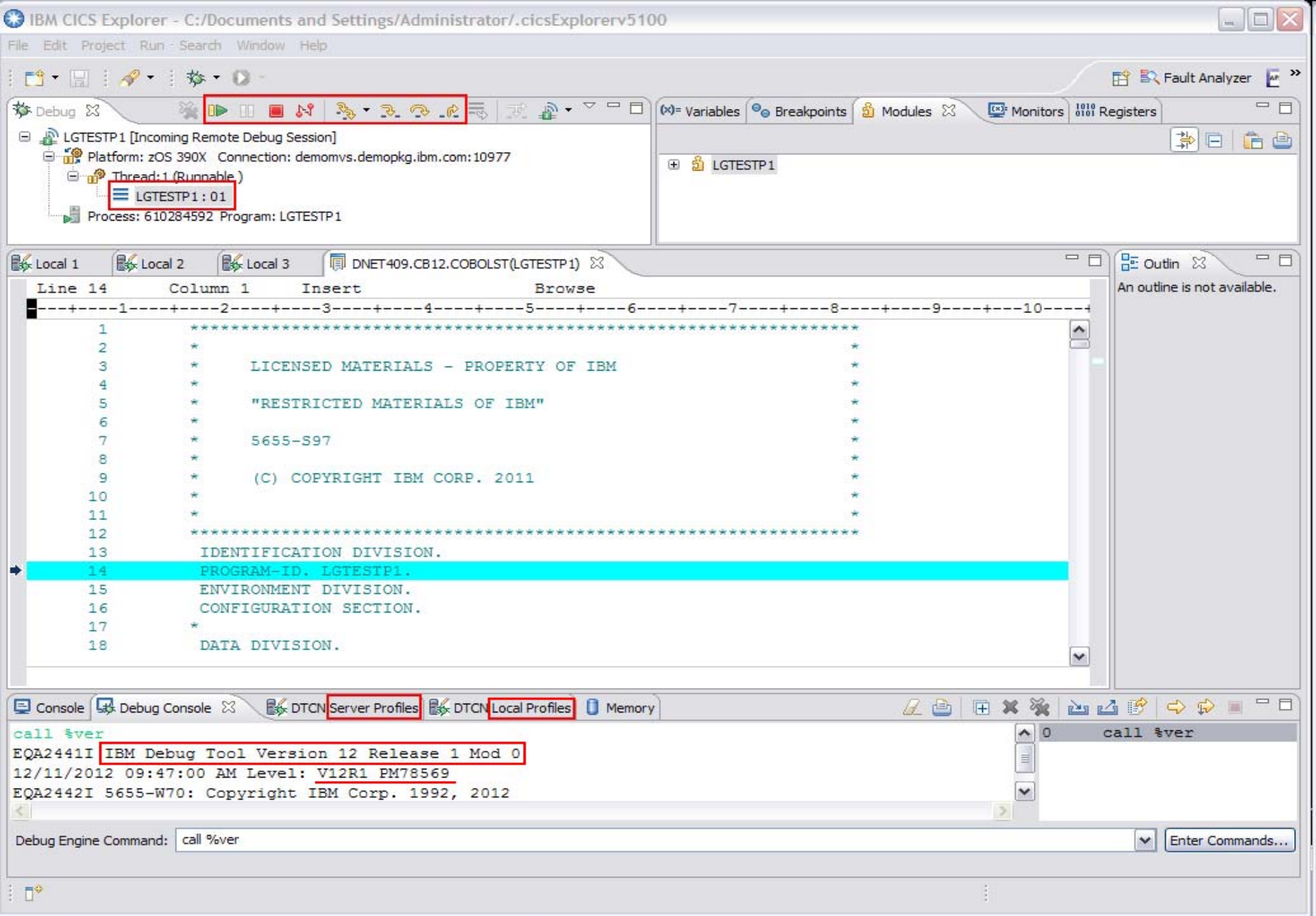
Load Module and Compile Unit (maximum 8 pairs)

Load Module	Compile Unit	
*	LGTESTP1	

User Id: DDS1687 NetName: IP Name/Address: Commarea: Offset: 0 Data: Container: Name: Offset: 0 Data: URM Debugging: NO Profile Status: INACTIVE

**Test run time options**

Test Type: TEST Test Level: ERROR Session Type: TCP  
 Prompt: PROMPT  
 Session Address or Terminal Id: 9.55.177.75 Port: 8006  
 Commands File: \*  
 Preference File: \*  
 EQAOPTS File:  
 Other Language Environment Options:





Debug [Incoming Remote Debug Session]

Platform: zOS 390X Connection: demomvs.demopkg.ibm.com:27414

Thread: 1 (Runnable)

LGTESTP1: 01

Process: 610284592 Program: LGTESTP1

Variables Breakpoints Modules Monitors Registers

ENP1COLI = 'BLUE'

Local 1 Local 2 Local 3 DNET409.CB12.COBLST(LGTESTP1)

Line	Column	Insert	Browse
765		END-IF	
766			
767		Move CA-ISSUE-DATE	To ENP1IDAI
768		Move CA-EXPIRY-DATE	To ENP1EDAI
769		Move CA-M-MAKE	To ENP1CMKI
770		Move CA-M-MODEL	To ENP1CMOI
771		Move CA-M-VALUE	To ENP1VALI
772		Move CA-M-REGNUMBER	To ENP1REGI
773		Move CA-M-COLOUR	To ENP1COLI
774		Move CA-M-CC	To ENP1CCI
775		Move CA-M-MANUFACTURED	To ENP1MANI
776		EXEC CICS SEND MAP ('SSMAPP1')	
777		FROM (SSMAPP10)	
778		MAPSET ('SSMAP')	
779		END-EXEC	

Outline: An outline is not available.

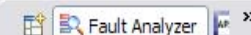
Console Debug Console DTCN Server Profiles DTCN Local Profiles Memory

Monitors

ENP1COLI

ENP1COLI : 0x2460EECB <Hex and Char (single pane)>

0x2460EECB	C2D3E4C5	40404040	00000000	00000000	00000000	00000000	BLUE
0x2460EEE3	00000000	00000000	000100F1	00000000	00000000	00000000	rrrrrrrrrr1rrrrrrrrrr
0x2460EEFB	00000000	00000000	00000000	00000000	00000000	00000000	rrrrrrrrrrrrrrrrrrrr
0x2460EF13	00000000	00000000	00000000	00000000	00000000	00000000	rrrrrrrrrrrrrrrrrrrr
0x2460EF2B	00000000	00000000	00000000	00000000	00000000	00000000	rrrrrrrrrrrrrrrrrrrr
0x2460EF43	00000000	00000000	00000000	00000000	00000000	00000000	rrrrrrrrrrrrrrrrrrrr
0x2460EF5B	00000000	00000000	00000000	00000000	00000000	00000000	rrrrrrrrrrrrrrrrrrrr



**Fault Analyzer Objects**

- demomvs.demopkg.ibm.com : 2800 [Demomvs:2800]
  - FAULTANL.V12R1.HIST

**Outline**

- Summary
- Synopsis
- Event summary
- Event details
- Abend job info
- System wide info
- Prolog
- Options in effect
- Epilog
- Minidump

```

7 A CICS abend ASRA occurred in module LGTESTP3 program LGTESTP3 at offset X'CF4'.
8
9 A program-interruption code 000B (Decimal-Divide Exception) is associated with
10 this abend and indicates that:
11
12 The divisor was zero in a signed decimal division.
13
14 The cause of the failure was program LGTESTP3 in module LGTESTP3. The COBOL
15 source code that immediately preceded the failure was:
16
17 Source
18 Line #
19 -----
20 000783 COMPUTE TAXES-DUE =
21 000784 ((EQUALIZATION-ADJ / CA-H-VALUE) *
22 000785 TAX-RATE) / 100
23
24 The COBOL source code for data fields involved in the failure:
25
26 Source
27 Line #
28 -----
29 000025 05 EQUALIZATION-ADJ PIC S9(9) COMP-3 VALUE 10000.
30 000671 07 CA-H-VALUE PIC 9(8).
31
32 Data field values at time of abend:
33
34 CA-H-VALUE = 0 *** Cause of error ***
    
```

Main Report | Event Details | **Abend Information** | System-Wide Information | Miscellaneous

demomvs.demopkg.ibm.com : 2800/FAULTANL.V12R1.HIST

FAULT_ID	JOB/TRAN	USER_ID	SYS/JOB	ABEND	I_ABEND	JOB_ID	USERNAME
F01815	CICSAOR6/SSP3	DNET409	DEMOMVS /CICSAOR6	ASRA	ASRA	STC04866	
F01814	DB1SWLM	SYSSTC	DEMOMVS /DB1SWLM	U4038	U4038	STC08004	
F01813	IMSTMSG1	SYSSTC	DEMOMVS /IMSTMSG1	U0002	n/a	JOB05174	
F01812	CICS&OR6/FCAT	DDS16&7	DEMOMVS /CICS&OR6	ASRA	ASRA	STC04866	

Writable | Insert | 1 : 1



Systems Information

Type here to search the tree (Ctrl+F)

- DSNT:
  - DB1S
    - Tables: GENAPP.\*.\*
      - GENAPP.CLAIM
      - GENAPP.COMMERCIAL
      - GENAPP.CPA\_CMFPFSUM
      - GENAPP.CPA\_EXPLOR41
      - GENAPP.CPA\_HSTG0SAA
      - GENAPP.CPA\_HSTG000A
      - GENAPP.CPA\_HSTG001A
      - GENAPP.CPA\_HSTG002A
      - GENAPP.CPA\_HSTG003A
      - GENAPP.CPA\_HSTG004A
      - GENAPP.CPA\_HSTG005A
      - GENAPP.CPA\_HSTG006A
      - GENAPP.CPA\_HSTG007A
      - GENAPP.CPA\_HST0SAA
      - GENAPP.CPA\_HST010A
      - GENAPP.CPA\_HST011A

Properties

Property	Value
Creator	GENAPP
Database	GENAPP
Database (hex)	C7C5D5C1D7D7
Name	CLAIM
Name (hex)	C3D3C1C9D4
Subsystem	DB1S
Table Space	GENATS07
Type	Table

DB2:TBL:DB1S:GENAPP.COMMERCIAL

Navigation  Cursor  Current 1 Total 5

	POLICYNUMBER	REQUESTDATE	STARTDATE	RENEWALDATE	ADDRESS	ZIPCODE
1	10	2011-08-23-10.44.34.000000	2011-08-25	2011-08-24	HURSLEY PARK	SO212JN
2	9	2011-07-17-13.13.09.000000	2011-08-01	2011-07-30	TURF MOOR	BB104BX
3	1000003	2012-01-05-07.25.03.274699	2012-01-05	2013-01-01	125 MAINT ST	1200
4	1000024	2012-02-09-08.53.16.559283	2012-01-01	2014-12-31	13 MAIN ST	19999-10
5	1000025	2012-02-09-08.54.05.454211	2012-01-01	2014-12-31	13 MAIN ST	19999-10

Template FM Generated Template

Formatted Mode

DB2:TBL:DB1S:GENAPP.COMMERCIAL

Layout DB2:TBL:DB1S:GENAPP.COMMERCIAL Current 1 Total 5 Cursor

Ref#	Key	Column Name	Data Type (Length)	Data
1	PU F	POLICYNUMBER	INTEGER	10
2		REQUESTDATE	TIMESTAMP	2011-08-23-10.44.34.000000
3		STARTDATE	DATE	2011-08-25
4		RENEWALDATE	DATE	2011-08-24
5		ADDRESS	CHARACTER (255)	HURSLEY PARK
6		ZIPCODE	CHARACTER (8)	SO212JN
7		LATITUDEN	CHARACTER (11)	51.026701
8		LONGITUDEW	CHARACTER (11)	-1.398903
9		CUSTOMER	CHARACTER (255)	IBM
10		PROPERTYTYPE	CHARACTER (255)	OFFICES
11		FIREPERIL	SMALLINT	3
12		FIREPREMIUM	INTEGER	8000
13		CRIMEPERIL	SMALLINT	3
14		CRIMEPREMIUM	INTEGER	25000

View Mode DB2 Single Mode Insert Mode Insert

Type here to search the tree (Ctrl+F)

- demosvs.demopkg.ibm.com:2800 - DemoMVS PD tools
  - Action History
  - CICS
  - Data Sets
  - Browse My Data Sets
  - DB2
    - Browse DB2 Subsystems
    - DB1S
      - Databases: DMUSERS.\*
        - CVTDB
        - GENAPP
        - Browse My Tables
        - HUMANA
        - IA31DB
        - IA32DB
        - IA32DEMO
        - IA51DB
        - SMRTDEV
    - Message Queue Managers
    - UNIX System Services

Navigation

	POLICYNUMBER	PROPERTYTYPE	BEDROOMS	VALUE	HOUSENAME	HOUSENUMBER	POSTCODE
1	6	HOUSE	5	0		5	SO211UP
2	7	FARM	8	37...	HOME FARM	4	SO529ED
3	8	FLAT	1	26...		12b	E15WW
4	1000023	SINGLE FAMILY	40	17...	SLEEPYHOLLOW	128	19901-58

Template: FM Generated Template

Formatted Mode

Properties

Property	Value

Lookup Console DB2:TBL:DB1S:GENAPP.HOUSE

Layout: DB2:TBL:DB1S:GENAPP.HOUSE

Ref#	Key	Column Name	Data Type (Length)	Data
1	PU F	POLICYNUMBER	INTEGER	6
2		PROPERTYTYPE	CHARACTER (15)	HOUSE
3		BEDROOMS	SMALLINT	5
4		VALUE	INTEGER	0
5		HOUSENAME	CHARACTER (20)	
6		HOUSENUMBER	CHARACTER (4)	5
7		POSTCODE	CHARACTER (8)	SO211UP

View Mode: DB2 Single Mode

File Manager - IBM Problem Determination Tools Studio

File Edit Navigate Search Project Run Window Help

Welcome

Welcome to **IBM Problem Determination Tools Studio**

Overview First Steps

Workbench

## OVERVIEW

About Problem Determination Tools Studio  
 Want to learn more about Problem Determination Tools Studio? Click here for more information.

Application Performance Analyser Overview  
 Review helpful information and descriptions of the Analysis Performance Analyser Plugin

Debug Tool Overview  
 Review helpful information and descriptions of the Debug Tool Plugin

Fault Analyser Overview  
 Review helpful information and descriptions of the Fault Analyser Plugin

File Manager Overview  
 Review helpful information and descriptions of the File Manager Plugin

Workload Simulator Overview  
 Review helpful information and descriptions of the Workload Simulator Plugin

Application Performance Analyser Perspective  
 Open the Application Performance Analyser Perspective


Debug Tool Perspective  
 Open the Debug Tool Perspective

Fault Analyser Perspective  
 Open the Fault Analyser Perspective

File Manager Perspective  
 Open the File Manager Perspective

Workload Simulator Perspective  
 Open the Workload Simulator Perspective

Demomvs:2800

- 
- **The LGTESTP3 program has been fixed....**
    - Use CM to correct the TCLASS definition
    - Install corrected definition, new copy program

Configurations (12)

Name	CSD/Context
CICSAOR1	CICSTS.CICSAOR1.DFHCS
CICSAOR2	CICSTS.CICSAOR2.DFHCS
CICSCM	CICSTS.COMMON.DFHCS
CPSMBAS	CICSPXL1
CSDAOR5	CICSTS.CICSAOR5.DFHCS
CSDAOR6	CICSTS.CICSAOR6.DFHCS
CSDAOR7	CICSTS.CICSAOR7.DFHCS
CTS32CSD	CICSTS.V3R2.DFHCS
CTS41CSD	CICSTS.V4R2.DFHCS
CTS42CSD	CICSTS.V4R2.DFHCS
EWHSTAGE	DNET409.STAGE.DFHCS
LIVECMSR	CICSTS.CICSCM.DFHCS

Group List Definitions Groups (6)

GEN\* in (CSDAOR6)

GENA
GENASAD
GENASAF
GENASAP
GENASAT
GENASA2

Transaction Definition (SSP1)

Transaction Definition (SSP1)

CNX02111 Context: GENASA2. Resource: TRANDEF. 4 records collected at Jan 2, 2013 1:39:53 PM

Name	Version	Create Time	Change Time	Description	Status
SSP1	0	Jan 2, 2013 12:38:...	Jan 2, 2013 12:38:...		ENABLED
TEST	0	Apr 27, 2012 8:25:...	Sep 25, 2012 9:10:...		ENABLED
TES2	0	Jun 3, 2012 6:55:...	Jun 3, 2012 10:15:...	demo transaction	ENABLED
TES3	0	Jun 4, 2012 1:39:...	Sep 25, 2012 9:11:...	demo test	DISABLED

History

Resource History for SSP1 from 2012/10/02 13:39:56 to latest entry

Revision Time	Resource Name/After	Resource Type/Before	Group	User Name	Configurat
2013/01/02 12:40:25	SSP1	TRANDEF	GENASA2	DNET409	CSDAOR6
traclass	DFHTCL09	DFHTCL00			
2013/01/02 12:38:59	SSP1	TRANDEF	GENASA2	DNET409	CSDAOR6
2013/01/02 12:38:04	SSP1	TRANDEF	GENASA2	DNET409	CSDAOR6
2012/12/31 10:41:46	SSP1	TRANDEF	GENASA2	DNET409	CSDAOR6

Transaction Definition (SSP1)

Attributes

CSDAOR6 > CSDAOR6 > SSP1

Property	Value
Alias	
Basic	
Definition Signature	
Change Agent	CSDAPI
Change Release	0670
Change Time	Jan 2, 2013 12:40:25 PM
Change User ID	DNET409
Create Time	Jan 2, 2013 12:38:59 PM
Details	
Brexit	
Isolation	YES
Partitionset	
Profile	DFHCICST
Program Name	LGTESTP1
Runaway Time	SYSTEM
Shutdown	DISABLED
Storageclear	NO
Task Data Key	USER
Task Data Location	ANY
Twasize	0
In Doubt	
Recovery	
Remote	
Scheduling	
Priority	1
Traclass	DFHTCL09
Security	

Overview Remote Termination Runtime Alias Recovery Attributes

(12)

Name	CSD/Context
CICSAOR1	CICSTS.CICSAOR1.DFHCS
CICSAOR2	CICSTS.CICSAOR2.DFHCS
CICSCM	CICSTS.COMMON.DFHCS
CPSMBAS	CICSPLX1
CSDAOR5	CICSTS.CICSAOR5.DFHCS
CSDAOR6	CICSTS.CICSAOR6.DFHCS
CSDAOR7	CICSTS.CICSAOR7.DFHCS

CNX0211I Context: CSDAOR6. Resource: CSDLIST. 1 records collected at Jan 2, 2013

Name	CICS System
GENALIST	N/A

CNX0211I Context: CSDAOR6. Resource: CSDGROUP. 6 records collected at Jan 2, 2013

Name	CICS System
GENA	N/A
GENASAD	N/A
GENASAF	N/A
GENASAP	N/A
GENASAT	N/A
GENASA2	N/A

CNX0211I Context: GENASA2. Resource: TRANDEF. 4 records collected at Jan 2, 2013 2:02:10 PM

Name	Version	Create Time	Change Time	Description	Status
SSP1	0	Jan 2, 2013 12:38:59 PM	Jan 2, 2013 12:40:25 PM		ENABLED
TEST	0	Apr 27, 2012 8:25:27 AM	Sep 25, 2012 9:10:38 PM		ENABLED
TES2	0	Jun 3, 2012 6:55:44 PM	Jun 3, 2012 10:15:27 PM	demo transaction	ENABLED
TES3	0	Jun 4, 2012 1:39:41 PM	Sep 25, 2012 9:11:06 PM	demo test	DISABLED

- Open
- Restore
- Find current version
- Dependencies
- Compare with current version
- New from...

Revision Time	Resource Type/Before	Group	User Name	Configuration	Command	Change Package	Scheme
2013/01/02 12:38:59	TRANDEF	GENASA2	DNET409	CSDAOR6	UPDATE		
2013/01/02 12:38:59	DFHTCL00						
2013/01/02 12:38:59	TRANDEF	GENASA2	DNET409	CSDAOR6	COPY		
	tpname						
	profile			DFHCICST			
	name			SSP1			
	isolation			YES			
	tranclass			DFHTCL00			
	...			...			



Configurations (12)

Name	CSD/Context
CICSAOR1	CICSTS.CICSAOR1.DFHCS
CICSAOR2	CICSTS.CICSAOR2.DFHCS
CICSCM	CICSTS.COMMON.DFHCS
CPSMBAS	CICSPLX1
CSDAOR5	CICSTS.CICSAOR5.DFHCS
CSDAOR6	CICSTS.CICSAOR6.DFHCS
CSDAOR7	CICSTS.CICSAOR7.DFHCS

CNX0211I Context: GENASA2. Resource: TRANDEF. 4 records collected at Jan 2, 2013 2:02:10 PM

Name	Version	Create Time	Change Time	Description	Status
SSP1	0	Jan 2, 2013 12:38:59 PM	Jan 2, 2013 12:40:25 PM		ENABLED
TEST		Apr 27, 2012 8:25:27 AM	Sep 25, 2012 9:10:38 PM		ENABLED
TES2		Jun 3, 2012 6:55:44 PM	Jun 3, 2012 10:15:27 PM	demo transaction	ENABLED
TES3		Jun 4, 2012 1:39:41 PM	Sep 25, 2012 9:11:06 PM	demo test	DISABLED

- New...
- New from...
- Open
- Install...
- Delete Delete
- Copy Ctrl+C
- Find
- Dependencies
- Add to Change Package
- Add Command to Change Package

Group List Definitions Name: GEN\*

CNX0211I Context: CSDAOR6. Resource: CSDLIST. 1 records collected at Jan 2, 2013

Name	CICS System
GENALIST	N/A

Resource Group Definitions Name: GEN\*

CNX0211I Context: CSDAOR6. Resource: CSDGROUP. 6 records collected at Jan 2, 2013

Name	CICS System
GENA	N/A
GENASAD	N/A
GENASAF	N/A
GENASAP	N/A
GENASAT	N/A
GENASA2	N/A

Resource History for SSP1 from 2012/10/02 14:04:05 to latest entry

Revision Time	Resource Name/After	Resource Type/Befor	Group	User Name	Configuration	Command	Change Package	Scheme
2013/01/02 13:01:40	SSP1	TRANDEF	GENASA2	DNET409	CSDAOR6	UPDATE		
2013/01/02 12:40:25	SSP1	TRANDEF	GENASA2	DNET409	CSDAOR6	UPDATE		
2013/01/02 12:38:59	SSP1	TRANDEF	GENASA2	DNET409	CSDAOR6	COPY		

Server: CPISM

- CICSDAX1
- CICSPDX1
  - WLMINARY CPISM
  - CICBRCAC
  - CICSAORB
  - CICSAOR1
  - CICSAOR2
  - CICSAOR3
  - CICSAOR4
  - CICSAOR5
  - CICSAOR6
  - CICSAOR7
  - CICSAOR8
  - CICSCM
  - CICSWUI
  - AORBRCAC
  - AORGRP1
  - AORGRP2
  - AORGRP3
  - CICGRP01
  - CICGRP02
  - CICGRP03
  - CICGRP04
  - CICGRP05
  - EVNREGNS
  - GRP0102
  - GRP0103
  - GRP0104
  - LKGRP
  - ODDREGNS
  - SGSERASA
  - TESTREFR
  - WILLGRP
  - WLMAORGP

CNX0211I Context: CICSAOR6. Resource: PROGRAM. 5 records collected at Jan 2, 2013 3:33:39 PM

Region	Name	Status	Use Count	Concurrent Use Count	Language	Share Status	CEDF Status	NEWCOPY Status
CICSAOR6	LGTESTC1	✓ ENABLED	21	0	COBOL	PRIVATE	CEDF	NOTREQUIRED
CICSAOR6	LGTESTP1	✓ ENABLED			COBOL	PRIVATE	CEDF	NOTREQUIRED
CICSAOR6	LGTESTP2	✓ ENABLED			COBOL	PRIVATE	CEDF	NOTREQUIRED
CICSAOR6	LGTESTP3	✓ ENABLED			COBOL	PRIVATE	CEDF	NOTREQUIRED
CICSAOR6	LGTESTP4	✓ ENABLED			COBOL	PRIVATE	CEDF	NOTREQUIRED

- Open
- New Copy
- Phase In
- Discard
- Enable
- Disable
- Copy Ctrl+C
- Dependencies >
- DTCN >

**Connections**

type filter text

- Application Performance Analyzer (1)
  - DemoMVS APA
- CICS Deployment Assistant (3)
  - DemoMVS DA
  - ZserverOS DA
  - MOP BLUE - DA
- CICS System Management (9)
  - CICSplex SM Data Interface (3)
  - CMCI (3)
  - Configuration Manager (3)

**Credentials**

- Austin [DNET409] Add...
- MOP Blue [SUC115] Add...

Edit... Delete

Connect Disconnect

Configurations Change Packages Filter:

Packages	Description	Last Action	Changetime	Last User	Last Scheme	Last Return Code	Last Reason Code	External Reference
00000001	Migrate resources from CICS TS 3.2 to 4.1	READY	2012/04/18 05:31:21.81	STANNA	CTS32T41	00000004	001100AC	
00000002	Migrate from AOR6 to AOR7	MIGRATE	2012/02/13 08:24:08.77	DNET409	AOR6TO7	00000004	00040024	
00000003	Migrate from CSD to CPSM BAS	BACKOUT	2012/05/30 03:55:56.57	STANNA	AOR6TO7	00000000	00000000	
BERLIN	test	CREATE	2012/10/18 06:37:46.04	CICSUSER		00000000	00000000	
BNAPKG1	Test Package	BACKOUT	2012/05/18 09:36:18.00	STANNA	AOR6TO7	00000000	00000000	Exter
CARINA	Prueba	MIGRATE	2012/09/17 09:15:11.73	CICSUSER	PRUCARI	00000004	00040024	
CARPACK	prueba del 6 al 7	MIGRATE	2012/09/03 14:37:07.52	CICSUSER	PRUCARI	00000004	00040024	
CP1		CREATE	2012/05/21 06:49:45.78	STANNA		00000000	00000000	
DEMO	Demo PKG	CREATE	2012/07/19 08:28:12.37	SIDDELL		00000000	00000000	
DEV2TEST	Development to Test	READY	2012/09/27 05:44:24.27	STANNA	GENAPP	00000000	00000000	
EMSTEST	test	READY	2012/10/17 12:01:19.60	CICSUSER	GENAPP	00000000	00000000	
ERICDEMO	Demo of change packaging via explorer	UNREADY	2012/09/25 21:26:59.39	DNET409	AOR6TO7	00000000	00000000	
ERICPACK	test package for Eric	MIGRATE	2012/09/18 10:22:48.92	DNET409	AOR6TO7	00000000	00000000	test
GENAPP01	Migration of GENAPP resource	READY	2012/04/29 12:40:09.97	STANNA	GENAPP	00000000	00000000	
JOETEST	Test Package	READY	2012/10/31 06:37:37.16	DNET453	AOR6TO7	00000000	00000000	
SFCPKG1	Package for SFC app	MIGRATE	2012/05/02 17:52:17.51	STANNA	AOR6TO7	00000004	00040024	
SSACHPKG	Change package for WMQ definitions	MIGRATE	2012/07/11 03:44:50.43	SIDDELL	AOR1TO6	00000004	00040024	

Group List Definitions Name: GEN\*

CNX0211I Context: CSDAOR6. Resource: CSDLIST. 1 records collected at Jan 2, 2013 2:02:06 PM

Name	CICS System
GENALIST	N/A

Resource Group Definitions Name: GEN\*

CNX0211I Context: CSDAOR6. Resource: CSDGROUP. 6 records collected at Jan 2, 2013 2:02:03 PM

Name	CICS System
GENA	N/A
GENASAD	N/A
GENASAF	N/A
GENASAP	N/A
GENASAT	N/A
GENASAZ	N/A

Runtime coldstart c Change Package (GENA)

### Migration Scheme

Select the Migration Scheme to scope the resources by.

GENAPP

### Resources

View ready-list and remove definition resources from this Change Package.

Ready list has errors. (Reason : 0006004F)

Resources	Ready State	Group	Configuration	Remove
DB2 Entry Definition (1)				
DB1SLU2	Ready	GENASAD	CSDAOR6	
Enqueue Model Definition (1)				
File Definition (2)				
KSDSCUST	Not Ready	GENASAF	CSDAOR6	
KSDSPOLY	Ready	GENASAF	CSDAOR6	
Program Definition (26)				
Transaction Definition (9)				
LGCF	Ready	GENASAT	CSDAOR6	
LGPF	Ready	GENASAT	CSDAOR6	
LGSE	Ready	GENASAT	CSDAOR6	
SSC1	Ready	GENASAT	CSDAOR6	
SSP1	Ready	GENASAT	CSDAOR6	
SSP2	Ready	GENASAT	CSDAOR6	
SSP3	Ready	GENASAT	CSDAOR6	
SSP4	Ready	GENASAT	CSDAOR6	
test	Unknown	GENASAT	CSDAOR6	

Group resources by type

Resources Commands History

Change Package ERICDEM2 deleted successfully

DemoMVS CM

Configurations (12)

Name	CSD/Context
CICSAOR1	CICSTS.CICSAOR1.DFHCS
CICSAOR2	CICSTS.CICSAOR2.DFHCS
CICSCM	CICSTS.COMMON.DFHCS
CPSMBAS	CICSPLX1
CSDAOR5	CICSTS.CICSAOR5.DFHCS
CSDAOR6	CICSTS.CICSAOR6.DFHCS
CSD	
CTS	
CTS	
CTS	
EW	
LIVE	

Group GEN\* (6)

- GENA
- GENASAD
- GENASAF
- GENASAP
- GENASAT
- GENASAZ

Deployment analysis

- Candidates
- Candidates compare
- Check
- Coldstart compare
- Deployment Analysis Editor..

Other options: New, Show history, Show all lists, Show all groups, Show all resources, Clean up, Search

Transaction Definition (SSP1)

Name: \_\_\_\_\_

CNX0220E A connection error has occurred:  
com.ibm.cics.cm.cpsm.comm.CMFilterConnectionException: You must use a filter

Name	Version	Create Ti...	Change Ti...	Description	Status

History

Resource History for SSP1 from 2012/10/02 13:39:56 to latest entry

Revision Time	Resource Name/After	Resource Type/Be
2013/01/02 12:40:25	SSP1	TRANDEF
2013/01/02 12:38:59	DFHTCL09	DFHTCL00
2013/01/02 12:38:59	SSP1	TRANDEF
2013/01/02 12:38:04	SSP1	TRANDEF
2012/12/31 10:41:46	SSP1	TRANDEF

Transaction Definition (SSP1)

Attributes

CSDAOR6 > CSDAOR6 > SSP1

Property	Value
Alias	
Basic	
Definition Signature	
Change Agent	CSDAPI
Change Release	0670
Change Time	Jan 2, 2013 12:40:25 PM
Change User ID	DNET409
Create Time	Jan 2, 2013 12:38:59 PM
Details	
Brexit	
Isolation	YES
Partitionset	
Profile	DFHCICST
Program Name	LGTESTP1
Runaway Time	SYSTEM
Shutdown	DISABLED
Storageclear	NO
Task Data Key	USER
Task Data Location	ANY
Twasize	0
In Doubt	
Recovery	
Remote	
Scheduling	
Priority	1
Tranclass	DFHTCL09
Security	

Overview Remote Termination Runtime Alias Recovery Attributes

IE01001 Connected user DNET409 to host demomvs.demopkg.ibm.com on port 6023

DemoMVS CM

Configurations (12)

Name	CSD/Context
CICSAOR1	CICSTS.CICSAOR1.DFHCSO
CICSAOR2	CICSTS.CICSAOR2.DFHCSO
CICSCM	CICSTS.COMMON.DFHCSO
CPSMBAS	CICSPLEX1
CSDAOR5	CICSTS.CICSAOR5.DFHCSO
CSDAOR6	CICSTS.CICSAOR6.DFHCSO
CSDAOR7	CICSTS.CICSAOR7.DFHCSO
CTS32CSD	CICSTS.V3R2.DFHCSO
CTS41CSD	CICSTS.V4R1.DFHCSO
CTS42CSD	CICSTS.V4R2.DFHCSO
EWHSTAGE	DNET409.STAGE.DFHCSO
LIVECMSR	CICSTS.CICSCM.DFHCSO

Group List Definitions Groups (6)

GEN\* in (CSDAOR6)

GENA
GENASAD
GENASAF
GENASAP
GENASAT
GENASA2

Name:

CNX0220E A connection error has occurred:  
com.ibm.cics.cm.cpsm.comm.CMFilterConnectionExcep... You must use a filter

Name	Version	Create Ti...	Change Ti...	Description	Status

History

Resource History for SSP1 from 2012/10/02 13:39:56 to latest entry

Revision Time	Resource Name/After	Resource Type/Be
2013/01/02 12:40:25	SSP1	TRANDEF
2013/01/02 12:38:59	SSP1	TRANDEF
2013/01/02 12:38:04	SSP1	TRANDEF
2012/12/31 10:41:46	SSP1	TRANDEF

Transaction Definition (SSP1) Runtime coldstart compare.jcl

```

//CCVJB1A JOB COLDSTCM, NOTIFY=&SYSUID,
//          CLASS=A, MSGCLASS=H, MSGLEVEL=(1,1)
//-----
/** CCVBMAIN - COLD START COMPARE
/**          - RUNTIME:  data obtained via CICS CM connection
/**          - CANDIDATES: data obtained from both CSD and CPSM
//-----
//DEPLOY   EXEC PGM=CCVBMAIN
//STEPLIB DD DISP=SHR, DSN=CICSCM.V2R1.SCCVAENU
//          DD DISP=SHR, DSN=CICSCM.V2R1.SCCVAUTH
//CCVPRINT DD SYSOUT=*
//CCVREPRI DD SYSOUT=*          * OUTPUT REPORT RESULTS
//CCVFLTEX DD SYSOUT=*          * OUTPUT SAMPLE FILTER STATEMENTS
/**CCVFLTEX DD DSN=DNET409.CCV.DAFILTER,
/**          UNIT=SYSDA, SPACE=(TRK, (10,100), RLSE),
/**          LRECL=80, RECFM=FB, BLKSIZE=3200, DSORG=PS,
/**          DISP=(,CATLG,CATLG)
//CCVPARMS DD *
CONNECT   IPADDRESS=DEMOMVS.DEMOPKG.IBM.COM, PORT=6023, SSL=NO
DEPLOY    PHASE=COLLECT,
           REPORTSET=1,
           TYPE=RUNTIME,
           CONFIGURATION=CSDAOR6,
           CONNECTION=AOR6,
           PHASE=COLLECT,
           REPORTSET=2,
           TYPE=CANDIDATES,
           CONFIGURATION=CSDAOR6,
           GRPLIST=LISTAOR6,
           GRPLIST=DFHLIST,
           LOCALSYSID=C22F,
           PHASE=REPORT,
           TYPE=COLDSTARTCOMPARE
/**          FILTERDATASET=DNET409.CCV.DAFILTER
//
    
```

Configurati Change Pac

(12)

Name	CSD/Con
CICSAOR1	CICSTS.C
CICSAOR2	CICSTS.C
CICSCM	CICSTS.C
CPSMBAS	CICSPLEX
CSDAOR5	CICSTS.C
CSDAOR6	CICSTS.C
CSDAOR7	CICSTS.C
CTS32CSD	CICSTS.V
CTS41CSD	CICSTS.V
CTS42CSD	CICSTS.V

Group List Definit Groups

GEN\* in (CSDAOR6) (6)

GENA
GENASAD
GENASAF
GENASAP
GENASAT
GENASA2

Search Results Transaction Definitions Program Definitions File Definitions TD Queue Definitions

History

z/OS Job

Job ID: JOB06609 Name: CCVJB1A User: DNET409 Status: ACTIVE

2013/01/02 12:55 CICS Configuration Manager V2.1 Page 1

Batch Utility

CICS Deployment Analysis Report  
Cold Start Compare Report  
Report Options

```
CONNECT IPADDRESS=DEMOMVS.DEMOPKG.IBM.COM,PORT=6023,SSL=NO
DEPLOY PHASE=COLLECT,
        REPORTSET=1,
        TYPE=RUNTIME,
        CONFIGURATION=CSDAOR6,
        CONNECTION=AOR6,
        PHASE=COLLECT,
        REPORTSET=2,
        TYPE=CANDIDATES,
        CONFIGURATION=CSDAOR6,
        GRPLIST=LISTAOR6,
        GRPLIST=DFHLIST,
        LOCALSYSID=C22F,
        PHASE=REPORT,
        TYPE=COLDSTARTCOMPARE,
        FILTERDATASET=DNET409.CCV.DAFILTER
```

\*\*\*End of Section\*\*\*

2013/01/02 12:55 CICS Configuration Manager V2.1 Page 2

Batch Utility

CICS Deployment Analysis Report  
Cold Start Compare Report  
Data Sources

Transaction Definition (SSP) \*Runtime coldstart compar

```
//CCVJB1A JOB COLDSTCM,NOTIFY=&SYSUID,
//          CLASS=A,MSGCLASS=H,MSGLEVEL=(1,1)
//-----
/** CCVBMAIN - COLD START COMPARE
/**          - RUNTIME: data obtained via CICS
/**          - CANDIDATES: data obtained from both
//-----
//DEPLOY EXEC PGM=CCVBMAIN
//STEPLIB DD DISP=SHR,DSN=CICSCM.V2R1.SCCVAENU
//          DD DISP=SHR,DSN=CICSCM.V2R1.SCCVAUTH
//CCVPRINT DD SYSOUT=*
//CCVREPRI DD SYSOUT=* * OUTPUT REPORT
//CCVFLTEX DD SYSOUT=* * OUTPUT SAMPLE
/**CCVFLTEX DD DSN=DNET409.CCV.DAFILTER,
/**          UNIT=SYSDA,SPACE=(TRK,(10,100),RLSE
/**          LRECL=80,RECFM=FB,BLKSIZE=3200,DSOR
/**          DISP=(,CATLG,CATLG)
//CCVPARMS DD *
CONNECT IPADDRESS=DEMOMVS.DEMOPKG.IBM.COM,P
DEPLOY PHASE=COLLECT,
        REPORTSET=1,
        TYPE=RUNTIME,
        CONFIGURATION=CSDAOR6,
        CONNECTION=AOR6,
        PHASE=COLLECT,
        REPORTSET=2,
        TYPE=CANDIDATES,
        CONFIGURATION=CSDAOR6,
        GRPLIST=LISTAOR6,
        GRPLIST=DFHLIST,
        LOCALSYSID=C22F,
        PHASE=REPORT,
        TYPE=COLDSTARTCOMPARE,
        FILTERDATASET=DNET409.CCV.DAFILTER
//
```

Runtime coldstart compare.jcl





# End of Demonstration Screen Shots