



Introducing the IBM z/OS Management Facility V1.11

Session 0921

SHARE, Denver

August 2009

Anuja Deedwaniya

anujad@us.ibm.com

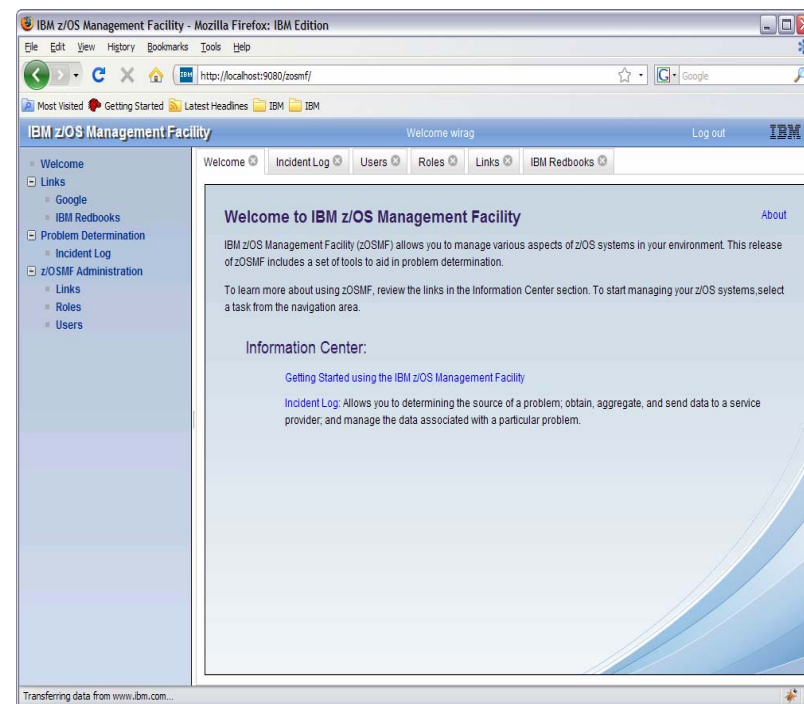
IBM system z

Agenda

- Overview
- Usage & Invocation
- Interactions & Dependencies
- Migration & Coexistence Considerations
- Session Summary
- Appendix

IBM z/OS Management Facility V1.11

- **The IBM z/OS Management Facility is a new, product for z/OS that provides support for a modern, Web-browser based management console for z/OS.**
- Helps system programmers to more easily manage and administer a mainframe system by simplifying day to day operations and administration of a z/OS system.
- More than just a graphical user interface, the z/OS Management Facility is intelligent, addressing the needs of a diversified skilled workforce and maximizing their productivity.
 - ▶ Automated tasks can help reduce the learning curve and improve productivity.
 - ▶ Embedded active user assistance (such as wizards) guides you through tasks and helps provide simplified operations.



IBM z/OS Management Facility V1.11

Focus on System Programming

- **Address the needs for a mixed skill workforce.**

- **Make System Programmers who are new to the mainframe productive more quickly by:**
 - ▶ Providing a modern browser-based user interface that is more familiar to those new to the platform
 - ▶ Automating tasks, thus reducing the learning curve
 - ▶ Embedding active user assistance in the UI (e.g., wizards that guide users through tasks, interactive troubleshooting aids).

- **Make experienced System Programmers more productive by:**
 - ▶ Making functions easier
 - ▶ z/OS Management Facility is optional for those who prefer traditional interfaces



IBM z/OS Management Facility V1.11

Focus areas for simplification

Problem Management and Analysis

- Monitoring health; identifying real and potential problems
- Analyzing and resolving problems

Configuration

- Adding or changing system components; enabling new features; defining and updating policies that affect system behavior.

Simplify and modernize the System Programmer User Experience

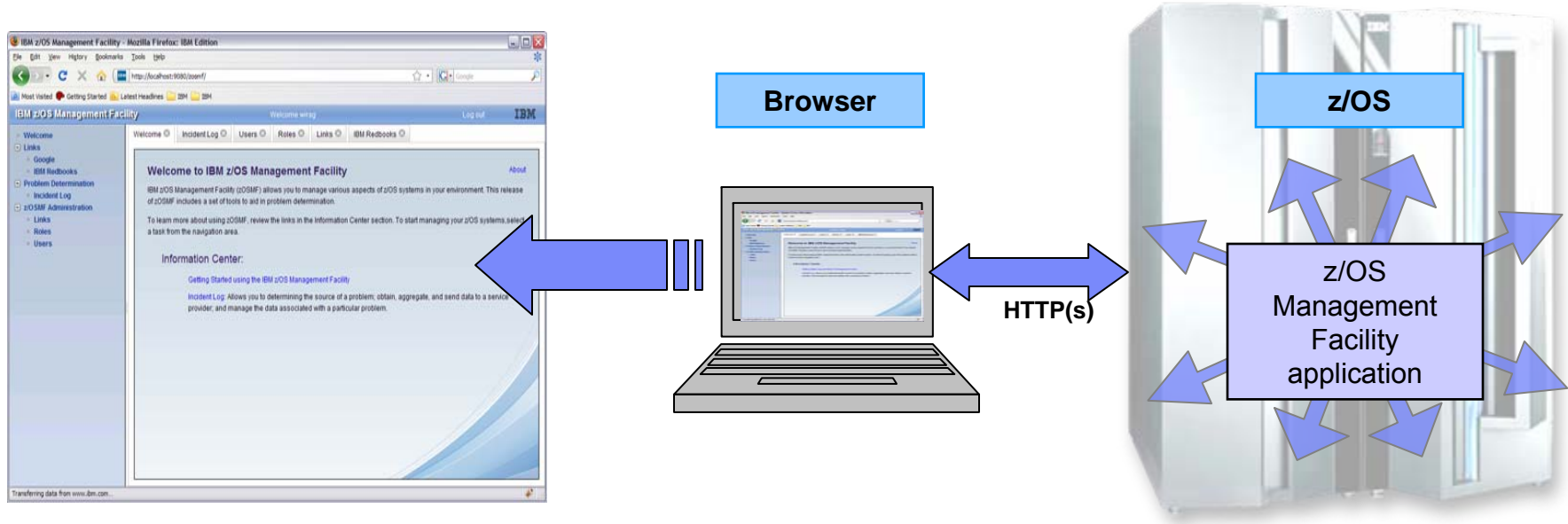
Deliver solutions in a task-oriented browser-based user interface with integrated user assistance

Information

Finding the information needed to use z/OS

IBM z/OS Management Facility

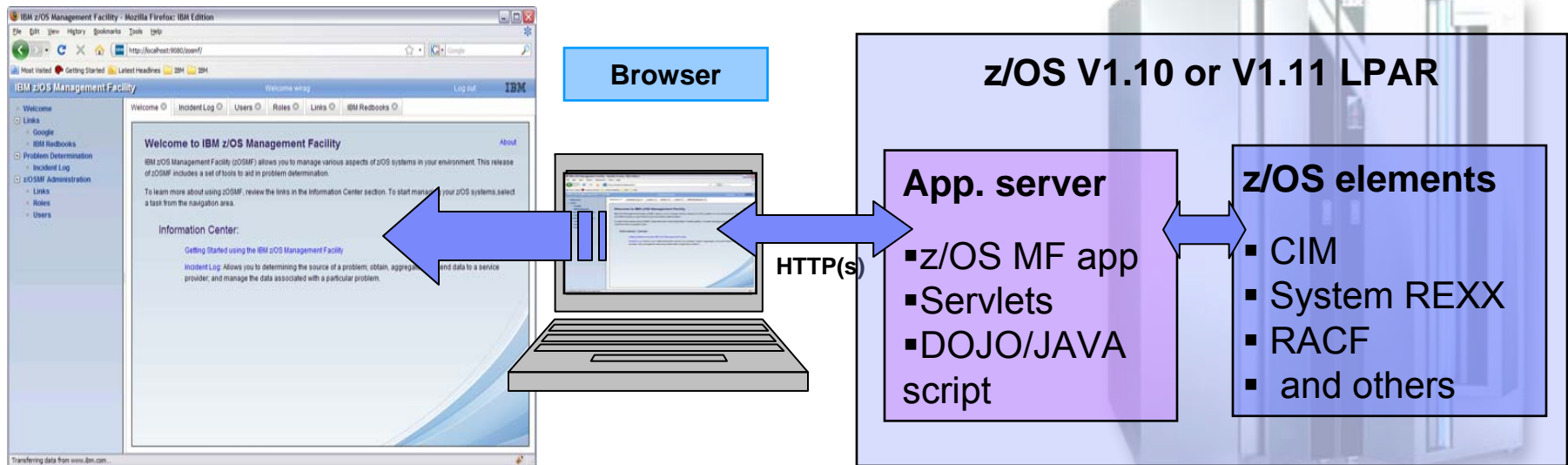
z/OS application, browser access



- **z/OS Management Facility is a WEB 2.0 application on z/OS**
 - ▶ Manages z/OS from z/OS
 - ▶ Browser communicates with z/OSMF via secure connection

IBM z/OS Management Facility

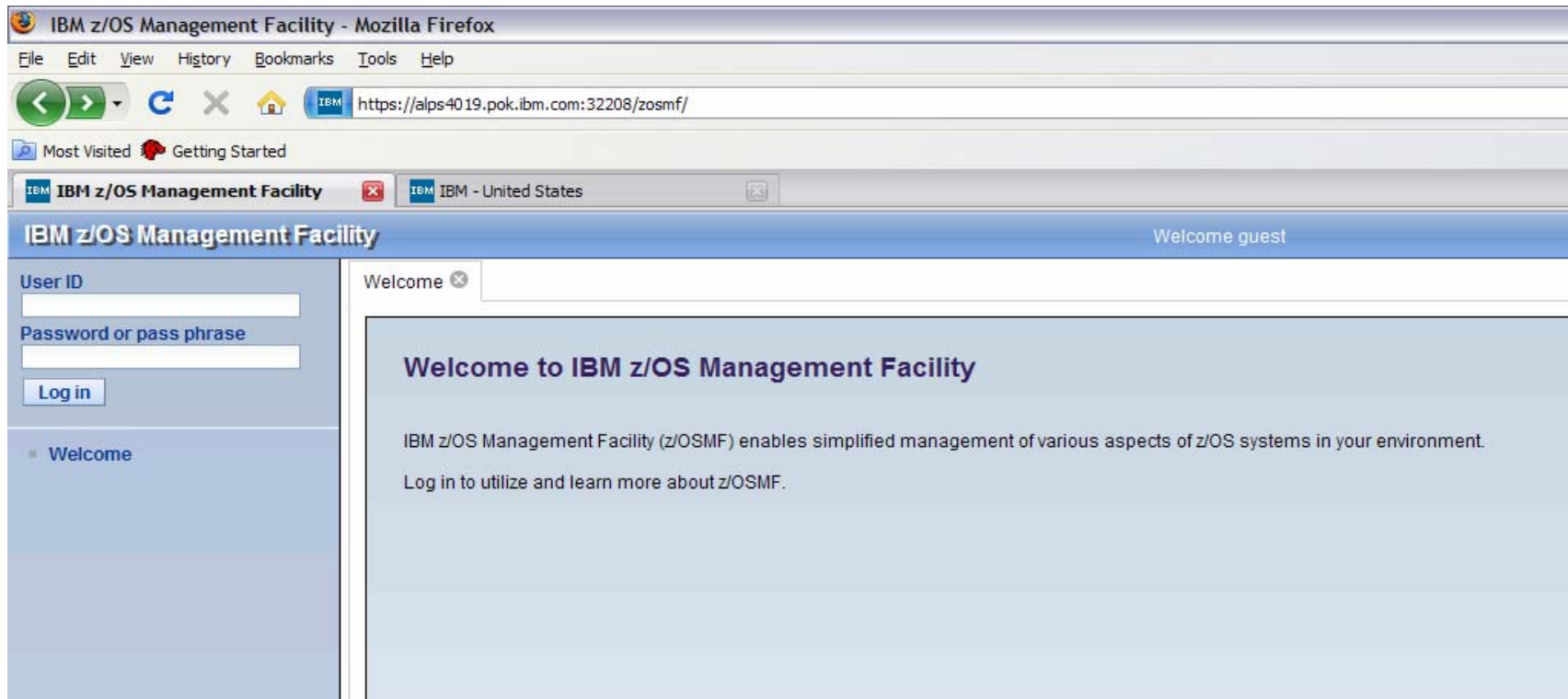
The Application Stack



- **z/OS Management Facility is based on industry standards**
 - ▶ Java and Dojo
 - Dojo is an Open Source DHTML toolkit written in JavaScript. Dojo allows you to build dynamic capabilities into web pages and any other environment supporting JavaScript.

Guest view

Login



- To log in you will need a z/OS userID that has been defined and enabled for z/OSMF (and the WebSphere runtime environment)
 - ▶ Guidance is provided.

IBM z/OS Management Facility

Welcome page

The screenshot shows a Microsoft Internet Explorer browser window displaying the IBM z/OS Management Facility welcome page. The browser's address bar shows the URL: `https://alps4089.pok.ibm.com:32208/zosmf/`. The page title is "IBM z/OS Management Facility" and the user is logged in as "ibmuser".

The page layout includes a navigation menu on the left and a main content area on the right.

Navigation Menu:

- Welcome
- Configuration
 - Configuration Assistant
- Links
 - Shop zSeries
 - Support for z/OS
 - System z Redbooks
 - z/OS Basics Information Center
 - z/OS Home Page
 - z/OS Internet Library
- Problem Determination
 - Incident Log
- z/OSMF Administration
 - Links
 - Roles
 - Users

Main Content Area:

Welcome to IBM z/OS Management Facility [About](#)

IBM z/OS Management Facility (z/OSMF) enables simplified management of various aspects of z/OS systems in your environment.

To learn more about using z/OSMF, review the links in the Information Center section.

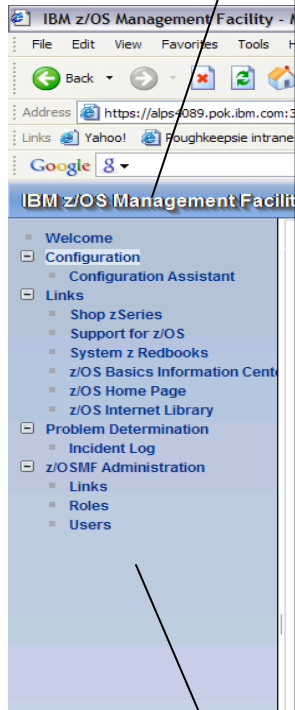
To start managing your z/OS systems, select a task from the navigation area.

Information Center:

- [Using the IBM z/OS Management Facility](#)
- Problem Determination:** Provides a consolidated list of problems, along with the details and the diagnostic data captured and saved with each problem. It also facilitates sending the diagnostic data for further diagnosis.
- Links:** Provides a common launch point for accessing resources beyond IBM z/OS Management Facility.

IBM z/OS Management Facility

Welcome page



➤ Configuration category with Configuration Assistant for z/OS Communication Server

- Simplified configuration and setup of TCP/IP policy-based networking functions

➤ Links category:

- Provides common launch point for accessing resources beyond the z/OSMF
- Some links are pre-defined in the product.

➤ Problem Determination category with the Incident Log task

- The Incident Log provides a consolidated list of SVC Dump related problems, along with details and diagnostic data captured with each incident. It also facilitates sending the data for further diagnostics.

➤ z/OSMF Administration category for the administrator:

- Authorization services for administrator to add z/OSMF users and roles
- Allows the administrator to dynamically add links to non-z/OSMF resources, e.g. ISV products, commonly used installation Web sites

z/OSMF Problem Determination

- **Pain Points**

- ▶ Need to troubleshoot a live system, recover from an apparent failure.
- ▶ Need to reduce risk to the business, reduce risk of re-occurrence.
- ▶ Complexity of performing the task (number of steps, jargon).
- ▶ Data collection very time-consuming
- ▶ Significant skill level needed to analyze problems, interact with IBM and ISVs to obtain additional diagnostic info (setting SLIP traps, traces, etc.)

- **Initial focus on Problem Determination capability - Incident Log :**

- ▶ Troubleshoot your system easier, faster
- ▶ The incident log and underlying z/OS diagnostic data gathering greatly improves the tasks related to:
 - Identifying system-detected problems (those related to SVC dumps taken by the system)
 - Collecting diagnostic materials related to a problem and sending materials to IBM or another company's support area
 - Telling the system to take the next dump for a previously-recognized problem

z/OSMF Problem Determination – Incident Log

Details

- **Auto-capture basic diagnostic materials, triggered when the dump is written to a data set, managed via parmlib member**
 - ▶ **Initial focus is on Abend and user initiated SVC dumps**
 - ▶ Improved FFDC for system-detected problems;
 - ▶ Diagnostic data “snapshots” for transient data;
 - Snapshots of 30 min Operlog,
 - 1 hr Logrec detail, and
 - 24-hour Logrec summary
 - ▶ Allow doc to be FTP'd to IBM (or ISV) without having to keep track of where logs are archived via easy to use interface
 - ▶ Simplify informing DAE to take the next dump for the selected incident's symptom string

- **Functions include:**
 - ▶ Display list of incidents (Filter/sort/configure table)
 - ▶ Set properties (associate problem number and tracking id)
 - ▶ Display properties – view list of diagnostic data, logs
 - ▶ Send diagnostic data via FTP, define FTP Profiles (firewall)
 - ▶ Manage ftp jobs status –View, Cancel Job, Delete Status
 - ▶ Allow next dump
 - ▶ Delete incident

z/OSMF Problem Determination – Incident log

Benefits

	Without z/OSMF**	With z/OSMF**
Recognizing a system-detected (dumped) problem occurred	Requires 5 to 7 manual steps, plus skill on effective use of IPCS to extract data from each of the dumps. Up to 5-6 minutes	Display in 1 click. Greatly reduced skill required As little as 5 seconds
Collecting and sending diagnostic data	Requires 7 to 15 manual steps, plus skill to locate the right log files, build and run JCL jobs, rename the output datasets, and use an ftp job to send the different data sets to the target destination. Up to 20 minutes Up to 30 minutes for sysplex components	Send the material in 8 clicks: <ul style="list-style-type: none"> ▪ Select the incident materials ▪ Specify the FTP destination information ▪ Indicate send the material ▪ Check whether the information was FTP'd successfully As little as 30 seconds
Allow new dump to be taken for the same symptom	Requires 7 to 12 manual steps, plus skill on effective use of IPCS to locate the dump data set, obtain the symptom string, get into the IPCS DAE display, locate the matching symptom string (could be non-trivial) and indicate TakeNext on the IPCS display Up to 15 minutes	Make the update happen in 3 mouse clicks As little as 10 seconds

** Based on IBM laboratory results, your results may vary

Incident Log – Summary Information

IBM z/OS Management Facility - Mozilla Firefox

https://dceimgne.pdl.pok.ibm.com:32209/zosmf/

IBM z/OS Management Facility Welcome pegusur Log out

Incident Log

Many fields, set tracking IDs

Context menu with actions

Set the duration

Incident Type	Description	Date and Time	Sysplex	System	Problem Number	Tracking ID	Release
User Initiated	ABEND=40D,RC=1C,COMPON=BTM2,COMPID=SCRT	Feb 23 2009 12:37:19 PM	CFCIMGNE	DCEIMGNE	41336,180,000		V1R1'
User Initiated	ABEND=40D,RC=1C,COMPON=BTM2,COMPID=SCRT	Feb 23 2009 12:37:16 PM	CFCIMGNE	DCEIMGNE	41336,180,000		V1R1'
<input checked="" type="checkbox"/>	ABEND S0913,COMPON=COMPONENT,RC=ISSUER=ITTRREC	Feb 23 2009 12:37:10 PM	CFCIMGNE	DCEIMGNE	12345		V1R1'
<input type="checkbox"/>	User Initiated	Feb 19 2009 10:25:56 AM	CFCIMGNE	DCEIMGNE	46678,057,649	3456789	V1R1'
<input type="checkbox"/>	User Initiated	Feb 19 2009 8:44:48 AM	CFCIMGNE	DCEIMGNE	41336,180,000	ar12345	V1R1'
<input type="checkbox"/>	User Initiated	Feb 18 2009 3:31:19 PM	CFCIMGNE	DCEIMGNE	41336,180,000		V1R1'
<input type="checkbox"/>	User Initiated	Feb 18 2009 3:17:58 PM	CFCIMGNE	DCEIMGNE	41336,180,000		V1R1'
<input type="checkbox"/>	User Initiated	Feb 18 2009 7:39:03 AM	CFCIMGNE	DCEIMGNE	41336,180,000		V1R1'
<input type="checkbox"/>	ABEND S00C4,COMPID=DF115,CSECT=IGWDQEMS+2802,DATE=01/09,MAINTID= NONE,ABND=0C4,RC=00000000,RSN=00000004	Feb 18 2009 7:30:34 AM	CFCIMGNE	DCEIMGNE	41336,180,000	ar12345	V1R1'
<input type="checkbox"/>	ABEND S00C4,COMPID=DF115,CSECT=IGWDQEMS+2802,DATE=01/09,MAINTID= NONE,ABND=0C4,RC=00000000,RSN=00000004	Feb 18 2009 7:30:34 AM	CFCIMGNE	DCEIMGNE			V1R1'
<input type="checkbox"/>	User Initiated	Feb 18 2009 7:16:38 AM	CFCIMGNE	DCEIMGNE	41336,180,000		V1R1'
<input type="checkbox"/>	User Initiated	Feb 17 2009 2:01:16 PM	CFCIMGNE	DCEIMGNE	41336,180,000		V1R1'

Total: 12, Filtered: 12, Selected: 1

Refresh Last Refresh: Feb 27 2009 11:15:10 AM

Transferring data from dceimgne.pdl.pok.ibm.com... dceimgne.pdl.pok.ibm.com:32209

Incident Log – Incident Details

IBM z/OS Management Facility - Mozilla Firefox

File Edit View History Bookmarks Tools Help

https://dceimgne.pdl.pok.ibm.com:32209/zosmf/

IBM z/OS Management Facility Welcome pegusr Log out IBM

Welcome Incident Log

Incident Log > View Diagnostic Details Help

View Diagnostic Details

General Diagnostic Data

Incident type: ABEND
 Incident description: COMPON=COMPONENT TRACE,COMPID=SCTRC,ISSUER=ITTRREC
 Date and time: Feb 23 2009 12:37:10 PM
 Sysplex name: CFCIMGNE
 System name: DCEIMGNE
 Problem number: 12345 If the problem number is an IBM PMR number, check this box to verify the syntax.
 Tracking ID:
 Component name: COMP TRACE
 Component ID: 5752SCTRC
 z/OS release: V1R11
 Product: BCP
 Abend code: S0913
 Reason code: 00000038
 CSECT: ITTPPARS
 Load module: ITTCTSER
 Symptom string: MOD/ITTCTSER CSECT/ITTPPARS PIDS/5752SCTRC AB/S0913 REXN/ITTRR FI/41003B5E0A0D010D4DE03AF4 REGS/0E76E REGS/038A6 HRC1/00000038 SUB1/COMPONENT#TRACE

OK Apply Cancel

Done dceimgne.pdl.pok.ibm.com:32209

Set Tracking ID...
 Set Problem Number...
 Delete Incident...
 Send Diagnostic Data...
 View Diagnostic Details
 FTP Job Status
 Allow Next Dump...

Tab shows lists of data (logrec and error log)

Incident Log – Send Diagnostic Data

IBM z/OS Management Facility - Mozilla Firefox

File Edit View History Bookmarks Tools Help

https://dceimgne.pdl.pok.ibm.com:32209/zosmf/

IBM z/OS Management Facility Welcome pegusur Log out IBM

Welcome Incident Log

Incident Log > Send Diagnostic Data Help

Send Diagnostic Data

Use this wizard to prepare and send diagnostic data to a predefined FTP destination.

Review the selected diagnostic data and enter a problem number. If the data to send is incorrect, click **Cancel** to exit the wizard. To select the data you want to send, use the Incident Log or View Diagnostic Details panel.

Incident		
Incident Type	Description	Date and Time
ABEND S0913	COMPON=COMPONENT TRACE,COMPID=SCTRC,ISSUER=ITTRREC	Feb 23 2009 12:37:10 PM

Diagnostic Data to Send		
Data Type	Sysplex	System
SVC dump	CFCIMGNE	DCEIMGNE
Error log	CFCIMGNE	DCEIMGNE
Operations log	CFCIMGNE	DCEIMGNE
Error log summary	CFCIMGNE	DCEIMGNE

* Problem number:
 If the problem number is an IBM PMR number, check this box to verify the syntax.

Back Next > Finish Cancel

Done dceimgne.pdl.pok.ibm.com:32209

Set Tracking ID...

Set Problem Number...

Delete Incident...

Send Diagnostic Data...

View Diagnostic Details

FTP Job Status

Allow Next Dump...

Wizard guides you through the send

z/OSMF Configuration

▪ Pain Points

- ▶ Configuration task is highly fragmented
 - Multiple tools, limited integration between tools
- ▶ User interfaces not intuitive for new system programmers
- ▶ Syntax is complicated and error-prone
- ▶ Regression of dynamic changes not reflected in system control files
- ▶ Difficult to assess impact of configuration changes

▪ Initial focus on Configuration Assistant for the z/OS Comm. Server

- ▶ A GUI application that simplifies the configuration and setup of the following TCP/IP policy-based networking functions:
 - Application Transparent TLS (AT-TLS)
 - IP Security (IPSec) including filters and VPNs
 - Network Security Server(NSS)
 - Intrusion Detection Services (IDS)
 - Policy-based Routing (PBR)
 - Quality of Service (QoS)

Configuration Assistant for z/OS Communications Server

- **A GUI that you can use to generate configuration files for z/OS Application Transparent-Transport Layer Security (AT-TLS), IP Security (IPSec), Network Security Services (NSS), Policy Based Routing (PBR), Quality of Service (QoS), and Intrusion Detection Services (IDS).**

- **Originally available as a Microsoft® Windows® web download since z/OS V1.7**
 - ▶ Functions have grown over time
 - ▶ Still available as a Windows download, but strategy is to provide it only with z/OSMF
 - ▶ All functions available with Windows are also provided with z/OSMF
 - ▶ If you are familiar with the Windows GUI, the Configuration Assistant on z/OSMF is essentially the same

- **Now available with z/OSMF V1.11 and z/OS V1.11**
 - ▶ Configuration files can now be saved to local disk storage that is accessible to your z/OS system where the Configuration Assistant is running so FTP (from Windows) is not required
 - ▶ Can also import configuration text files in cases where users have already defined policies and would like to begin using the Configuration Assistant

Configuration Assistant for z/OS Communications Server

Value

- Do you need to protect your enterprise data over the network with IP Security or Application Transparent TLS?
- Have you considered protecting your system from misuse from the network with Intrusion Detection Services and then using the Defense Manager Daemon to apply defensive filters?
- If so, you know that these functions can be quite complex to understand and also to set up
- You can pour over manuals or you can use a great tool to help you configure your policies and set up the environment to run these important functions right on the z/OS systems your configuring!
- Use The Configuration Assistant for z/OS Communications Server application on z/OSMF
- Helps users build their networking policies and then generates configuration text files for installation
- Guides users through setup tasks for the policy-base environment, including generation of configuration files, sample started procedures, and RACF® profiles

Configuration Assistant for z/OS Communications Server

IBM z/OS Management Facility - Mozilla Firefox

File Edit View History Bookmarks Tools Help

https://mvsvic04.tcp.raleigh.ibm.com:32208/zosmf/

IBM z/OS Management Facility Welcome user1 Log out

Configuration Assistant

V1R11 Configuration Assistant - Backing Store (Read-Write) = MVS098

Main Perspective

Navigation tree

- z/OS Images
 - Image - MVS098
 - Stack - TCP/CS1
 - Stack - TCP/CS2

Create configuration files for any number of z/OS images with any number of TCP/IP stacks per image.

Select the TCP/IP stack that you want to configure and the technology, such as AT-TLS or IPsec.

Click on "Action" and select "Configure" to begin configuring that technology.

Select	Technology	Description
<input type="radio"/>	AT-TLS	Application Transparent
<input type="radio"/>	DMD	Defense Manager Daemon
<input type="radio"/>	IPSec	IP Security
<input type="radio"/>	IDS	Intrusion Detection Services
<input type="radio"/>	NSS	Network Security Services
<input type="radio"/>	QoS	Quality of Service
<input type="radio"/>	PBR	Policy Based Routing

Work with settings for z/OS images

Add a New z/OS Image...

To work with a specific z/OS image or TCP/IP stack, select the z/OS image or TCP/IP stack from the navigation tree.

Save Exit

Configuration Assistant for z/OS Comm. Server (V1.11)

New Application setup tasks

- Application Setup task panel is a customized set of tasks (step-by-step) for each policy perspective to deploy the applications required for that function
- There are both image-level and stack-level setup tasks.

The screenshot displays the IBM z/OS Management Facility web interface in Mozilla Firefox. The browser address bar shows the URL: https://mvsvic04.tcp.raleigh.ibm.com:32208/zosmf/. The page title is "Application Setup Tasks for Image MVS098".

The interface includes a navigation menu on the left with the following items:

- Welcome
- Configuration
 - Configuration Assistant
 - Links
 - z/OSMF Administration

The main content area shows the following text:

This panel contains tasks to enable IP Security for z/OS image MVS098.

Steps:

- Select the task and click **Task Details** from the Actions menu.
- Follow the instructions on the panel.
- As you finish each task, change its status to **Complete**.

Below the instructions is a "List of setup tasks" section with a table:

Select	Task name	Last completion date	Status	Comment
<input checked="" type="radio"/>	Installation Location Setup	2009-07-22 15:02:48	Complete	Done
<input type="radio"/>	Policy Agent - RACF Directives		Incomplete	
<input type="radio"/>	Policy Agent - RACF Directives for Policy Data Import		Incomplete	
<input type="radio"/>	IKED - RACF Directives		Incomplete	
<input type="radio"/>	ipsec Command - RACF Directives		Incomplete	
<input type="radio"/>	Syslogd - RACF Directives		Incomplete	
<input type="radio"/>	TRMD - RACF Directives		Incomplete	
<input type="radio"/>	Policy Agent Configuration - Image MVS098		Incomplete	
<input type="radio"/>	Syslogd - Configuration		Incomplete	
<input type="radio"/>	Syslogd - Start Procedure		Incomplete	
<input type="radio"/>	IKED - Configuration		Incomplete	
<input type="radio"/>	IKED - Start Procedure		Incomplete	

The status bar at the bottom of the browser window shows the time as 5:00 PM, the date as Wednesday, July 22, 2009, and the weather as Partly Sunny, 77°F.

Focus on z/OSMF Administration

- **z/OSMF Authorization – defining users and roles**
 - ▶ The z/OSMF administrator must define the user to z/OSMF and assign a role in order for the user to start working with z/OSMF tasks
 - ▶ The user must have a valid userid on the z/OS system

- **Adding Links**
 - ▶ Allows the administrator to dynamically add links to non-z/OSMF resources, e.g. ISV products, commonly used installation Web sites

- **There are 4 roles that z/OSMF supports:**
 - **Guest** – User is not logged into z/OSMF
 - **Authenticated Guest** – User is logged into z/OSMF but has no role assigned
 - **Administrator** – User can access all tasks in z/OSMF
 - **User** – User can access all tasks except Administrator tasks

z/OSMF Administration: Adding a z/OSMF user

IBM z/OS Management Facility - Mozilla Firefox

File Edit View History Bookmarks Tools Help

https://dceimgne.pdl.pok.ibm.com:32209/zosmf/

Most Visited Getting Started Latest Headlines

IBM z/OS Management Facility Welcome zmfadm1 Log out IBM

- Welcome
- Links
- Problem Determination
- z/OSMF Administration
 - Links
 - Roles
 - Users**

Users

Use this panel to define new users and to modify or remove existing users.

Actions ▾ Search

- Remove...
- Properties
- New...**
- Select All
- Clear Filters
- Modify Sort...
- Clear Sorts
- zmfusr3

Name	Role
z/OSMF Administrator & CIM User	z/OSMF Administrator
z/OSMF User	z/OSMF User
z/OSMF User	z/OSMF User
z/OSMF admin	z/OSMF Administrator
z/OSMF admin	z/OSMF Administrator
z/OSMF admin	z/OSMF Administrator
z/OSMF user 1	z/OSMF User
z/OSMF user 2	z/OSMF User
z/OSMF user 3	z/OSMF User

View all users

Click on "Action" and select "New" to add a user to z/OSMF

For z/OS setup, scripts are provided. They encompass everything that is required to define additional users, end to end, to authorize them to z/OS resources.

For example, use the sample scripts to generate and submit the RACF commands needed to connect user to Configuration Assistant and/or Incident Log.

z/OSMF Administration: Defining a role

IBM z/OS Management Facility - Mozilla Firefox

File Edit View History Bookmarks Tools Help

https://alps4089.pok.ibm.com:32208/zosmf/

Most Visited Getting Started

IBM z/OS Management Facility Welcome ibmuser Log out IBM

Welcome Links Roles

Roles > Properties Help

Properties for z/OSMF User

Role:
z/OSMF User

* Description:
User can perform any tasks that are not defined as z/OSMF administration tasks

Tasks:

- Configuration
- Links
- Problem Determination
- z/OSMF Administration

Users with this role:

- peguser
- zosmfus1
- zosmus2

OK Restore Defaults Cancel

Done

alps4089.pok.ibm.com:32208

z/OSMF Administration: Adding a link

IBM z/OS Management Facility - Mozilla Firefox

File Edit View History Bookmarks Tools Help

https://alps4089.pok.ibm.com:32208/zosmf/

Most Visited Getting Started

IBM z/OS Management Facility Welcome ibmuser Log out IBM

- Welcome
- Configuration
 - Configuration Assistant
- Links
 - Shop zSeries
 - Support for z/OS
 - System z Redbooks
 - z/OS Basics Information Center
 - z/OS Home Page
 - z/OS Internet Library
- Problem Determination
 - Incident Log
- z/OSMF Administration
 - Links
 - Roles
 - Users

Welcome x Links x

Links > New Help

New Link

Use this panel to define a new link for z/OSMF.

* Name (maximum 25 characters):

* URL (maximum 4096 characters):

Roles authorized to use this link:

	Role	Description
<input checked="" type="checkbox"/>	z/OSMF Administrator	User can perform all tasks defined within z/OSMF
<input type="checkbox"/>	z/OSMF User	User can perform any tasks that are not defined as z/OSMF administration tasks
<input type="checkbox"/>	z/OSMF Authenticated Guest	User is logged into z/OSMF; however, no role is associated with the user's user ID
<input type="checkbox"/>	z/OSMF Guest	User is not logged into z/OSMF

OK Cancel

Done

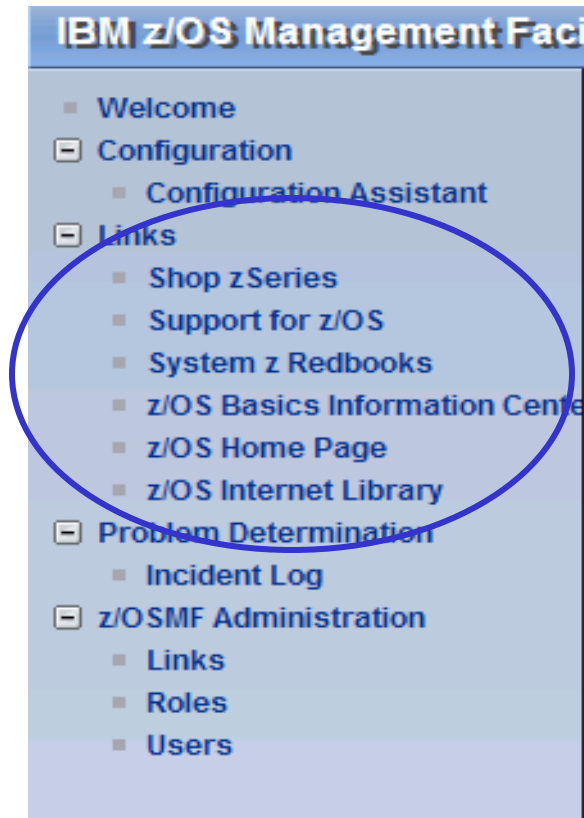
alps4089.pok.ibm.com:32208

Define the documentation

Select who can see it

Need to share sensitive information with a team?

Focus on Links



- This category contains the pre-defined links provided by IBM as well as any new links added by the z/OSMF administrator
- The links are available to all users of z/OSMF
- Administrator can define which roles have access to each of the defined links.
- The IBM pre-defined links are accessible to all users, including guests, by default.

Additional details on usage

- **z/OSMF V1R11 operating environment**
 - ▶ One instance of z/OSMF can manage one local system or sysplex
 - ▶ Multiple users may log into the same instance of z/OSMF from different workstations/browsers
 - Expectation is to support up to 15 concurrent users
 - ▶ From one client system, user can manage additional sysplexes by opening new browser windows (or tabs) and logging into the z/OSMF instance installed on those sysplexes (one browser per system/sysplex).
 - ▶ Only one active instance of z/OSMF is supported within a sysplex at any point in time.
 - Additional instance may be created e.g for test or service update or backup, but it should not be actively managing the systems at the same time (e.g. working on the same incident concurrently from 2 separate instances of z/OSMF) or using the same data repository.

Prerequisites

- **z/OS Management Facility requires z/OS V1 R10 and later**
 - ▶ z/OS V1R10 requires additional service, as defined in the program directory

- **The Configuration Assistant for z/OS Communications Server portion of z/OS Management Facility requires z/OS V1.11 or later.**

- **Client machine (no client machine install requirements)**
 - ▶ Windows XP® operating system and later
 - ▶ Supported browsers:
 - Mozilla Firefox 3.0.6 (recommended)
 - Mozilla Firefox 2
 - Internet Explorer® 7
 - Internet Explorer 6

Migration & Coexistence Considerations

- **In a mixed sysplex with some systems below z/OS V1R10:**
 - ▶ z/OSMF V1R11 must be installed and run on z/OS V1R10 or above
 - ▶ Incident Log: z/OS V1R9 system's SVC dumps will be reflected, but with some property values missing

- **Configuration Assistant is only supported on z/OSMF V1R11 running on a z/OS V1R11 system.**

- **z/OSMF can coexist with other ISV products**
 - ▶ For example, all setup instructions are provided for RACF, but z/OSMF will operate with other security products with equivalent instructions

Installation

Installation scenarios:

- z/OS V1R11 ServerPac
 - ▶ Provides **default** customization via post install customization
 - ▶ Follow the z/OSMF User's guide and WAS OEM Configuration Guide and use the Configuration scripts to setup if defaults are not viable
 - ▶ Provided for both Full System Replace and Software Upgrade installation paths
- z/OSMF V1R11 CBPDO
 - ▶ Can be installed on z/OS V1R10 or z/OS V1R11
 - ▶ Use Program directory to get started
 - ▶ Follow the z/OSMF User's guide and WAS OEM Configuration Guide and use the Configuration scripts to setup if defaults are not viable
- Setting additional instances (test, service, backup)
 - ▶ Follow the User's guide for instructions

Installation

V1R11 ServerPac

- The z/OS V1R11 ServerPac with z/OSMF V1R11 will have both the FMIDs that make up z/OSMF installed in the appropriate directories
- ServerPac provides post-install jobs to create a **default** instance of z/OSMF that has been setup end-end with all applications deployed. This includes:
 - ▶ Allocate and mount z/OSMF product and data file systems
 - ▶ Install and set up WAS OEM for z/OSMF and deploy z/OSMF applications
 - ▶ Create ZOSMFAD administrator identity
 - ▶ Set up z/OS for Incident Log (CIM Server, Sysplex Dump Directory, Logger, Log streams, etc).
 - ▶ Prime z/OSMF data repository with ZOSMFAD userid
- Note: When defaults cannot be taken, the User guide (s) should be followed to setup the product

Installation

z/OSMF V1R11 CBPDO (on z/OS V1R10 or z/OS V1R11)

The program directory provides sample jobs to install both the FMIDs that make up z/OSMF in the appropriate directories

- If you are installing on z/OS **V1R10**, apply prerequisite service
- Setup z/OS as described in the Planning section of z/OSMF User's Guide and WAS OEM 7.0 Configuration Guide
- Collect all the input as described in the WAS OEM Configuration Guide
- Collect all the inputs for application setup as described in the z/OSMF User's Guide
- Scripts are provided to configure and setup WAS OEM 7.0 and z/OSMF V1R11, as well as some of the required z/OS setup

Summary

- **IBM z/OS Management Facility (z/OSMF) V1R11 is a new product for z/OS customers.**
- **z/OSMF will make the day to day operations and administration of the mainframe z/OS systems easier to manage for both new and experienced system programmers.**
- **z/OSMF delivers solutions in a task oriented, Web browser based user interface.**
- **The initial functions in z/OSMF 1.11 include z/OSMF Administration, Incident Log, Configuration Assistant for z/OS Communication Server and Links**

Additional information

- Program Directory for z/OS Management Facility GI11-2886-00
- IBM z/OS Management Facility License Information GC52-1263-00
- IBM z/OS Management Facility User's Guide SA38-0652-00
- IBM WebSphere® Application Server OEM Edition for z/OS Configuration Guide, Version 7.0, GA32-0631-00

Trademarks

The following are trademarks of the International Business Machines Corporation in the United States and/or other countries.

IBM*	ServerPac*	* Registered trademarks of IBM Corporation
IBM (logo)	WebSphere*	
RACF*	z/OS*	

The following are trademarks or registered trademarks of other companies.

Adobe, the Adobe logo, PostScript, and the PostScript logo are either registered trademarks or trademarks of Adobe Systems Incorporated in the United States, and/or other countries.

Firefox is a trademark of Mozilla Foundation

Cell Broadband Engine is a trademark of Sony Computer Entertainment, Inc. in the United States, other countries, or both and is used under license there from.

Java and all Java-based trademarks are trademarks of Sun Microsystems, Inc. in the United States, other countries, or both.

Microsoft, Windows, Windows NT, and the Windows logo are trademarks of Microsoft Corporation in the United States, other countries, or both.

Internet Explorer is a trademark of Microsoft Corp

InfiniBand is a trademark and service mark of the InfiniBand Trade Association.

Intel, Intel logo, Intel Inside, Intel Inside logo, Intel Centrino, Intel Centrino logo, Celeron, Intel Xeon, Intel SpeedStep, Itanium, and Pentium are trademarks or registered trademarks of Intel Corporation or its subsidiaries in the United States and other countries.

UNIX is a registered trademark of The Open Group in the United States and other countries.

Linux is a registered trademark of Linus Torvalds in the United States, other countries, or both.

ITIL is a registered trademark, and a registered community trademark of the Office of Government Commerce, and is registered in the U.S. Patent and Trademark Office.

IT Infrastructure Library is a registered trademark of the Central Computer and Telecommunications Agency, which is now part of the Office of Government Commerce.

* All other products may be trademarks or registered trademarks of their respective companies.

Notes:

Performance is in Internal Throughput Rate (ITR) ratio based on measurements and projections using standard IBM benchmarks in a controlled environment. The actual throughput that any user will experience will vary depending upon considerations such as the amount of multiprogramming in the user's job stream, the I/O configuration, the storage configuration, and the workload processed. Therefore, no assurance can be given that an individual user will achieve throughput improvements equivalent to the performance ratios stated here.

IBM hardware products are manufactured from new parts, or new and serviceable used parts. Regardless, our warranty terms apply.

All customer examples cited or described in this presentation are presented as illustrations of the manner in which some customers have used IBM products and the results they may have achieved. Actual environmental costs and performance characteristics will vary depending on individual customer configurations and conditions.

This publication was produced in the United States. IBM may not offer the products, services or features discussed in this document in other countries, and the information may be subject to change without notice. Consult your local IBM business contact for information on the product or services available in your area.

All statements regarding IBM's future direction and intent are subject to change or withdrawal without notice, and represent goals and objectives only.

Information about non-IBM products is obtained from the manufacturers of those products or their published announcements. IBM has not tested those products and cannot confirm the performance, compatibility, or any other claims related to non-IBM products. Questions on the capabilities of non-IBM products should be addressed to the suppliers of those products.

Prices subject to change without notice. Contact your IBM representative or Business Partner for the most current pricing in your geography.

See url <http://www.ibm.com/legal/copytrade.shtml> for a list of IBM trademarks.