

A System z Developer's Journey Through the Application Lifecycle - Lunch'n'Learn

Rosalind Radcliffe / Dana Boudreau
IBM

11 August 2011
Session #: 10126

Scenario

JK Enterprises has a business need to provide to make a quick update to an existing application and work on a web front end

IT scenario is:

- Establish a requirement
- Break the requirement into working tasks, plan and assign them
- Execute on the tasks defined ensuring a level of quality before promoting it to the next stage
- Promote the changes to final test

Products to be demonstrated



Collaborative Lifecycle Management (CLM)

- **Rational Team Concert (RTC)**
- **Rational Requirements Composer (RRC)**
- Rational Quality Manager

Rational Developer for System z (RDz)

Rational Developer for System z Unit Test (RDz UT)

z/OS Debug Tool

Rational Team Concert: Workbench for Collaborative Lifecycle Management

A robust, extensible solution for analysts, developers and quality professionals



Rational Developer for System z

What is RDz

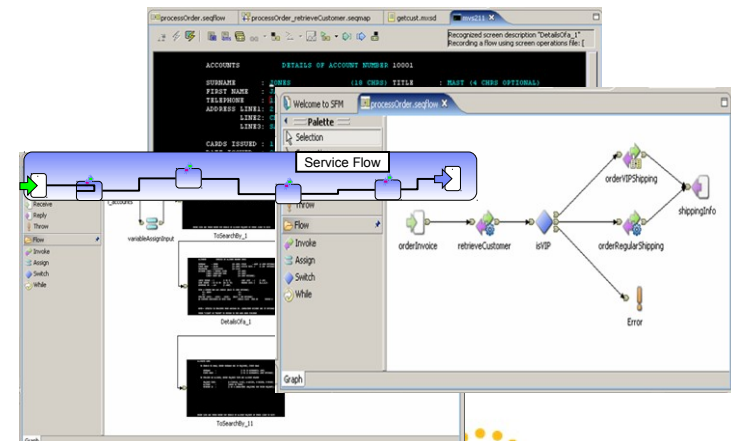
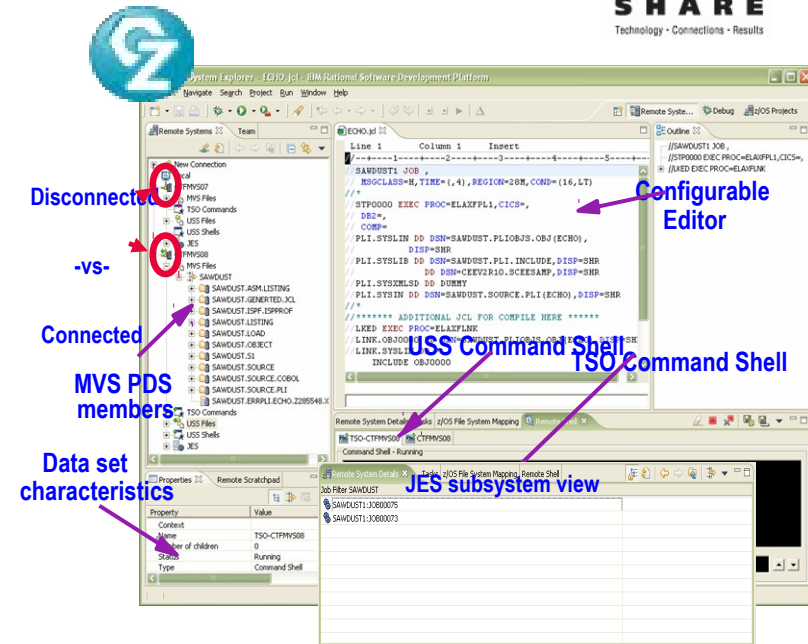
- Eclipse-based IDE speeding modern composite (SOA) application development

RDz supports Enterprise Modernization

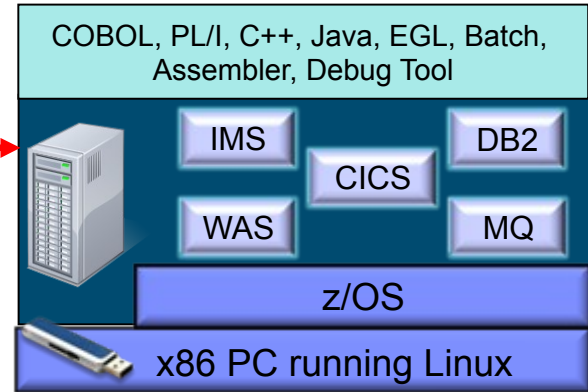
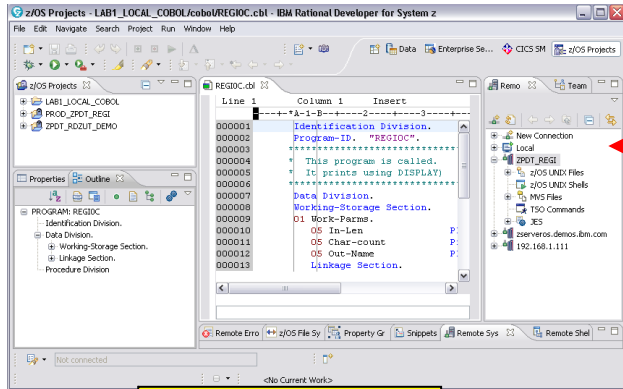
- Supports common IDE for COBOL, PL/I, C, C++, HLASM, Java, EGL and web services
- Transforms UML to COBOL source code
- Provides interactive access to z/OS for development, debug, job generation, submission, monitoring, command execution
- Supports new and existing runtimes (CICS, IMS, Batch, USS, DB2 SP, WAS)

RDz supports SOA

- Enables CICS and IMS applications for web services and SOA
- Supports for J2EE, JCA, XML, web services



Using RDz Unit Test Feature



RDz Client

**RDz
Unit Test
(RDz UT)**



RDz UT machine specifications

- Underlying Linux requirement
 - Red Hat Enterprise Linux 5.3 (RHEL 5.3) – 64-bit
 - OpenSUSE 10.3, 11.0, and 11.1 – 64-bit
- Base machine must have:
 - ▶ Processor
 - RDz-UT Standard - Minimum practical configuration is 2.4 Ghz Core 2 Duo
 - RDz-UT Specialty - Minimum practical configuration is 2.0 Ghz i5 / i7 4 core
 - ▶ RAM
 - 3 GB minimum
 - Recommended is 1 GB for base Linux + 2 GB per processor core enabled for RDz-UT
 - ▶ Disk space
 - 20 GB for base Linux / zPDT install
 - 50-120 GB for z/OS install
 - ▶ Network
 - 100MB / 1GB Ethernet adapter (shared by Linux and z/OS)
 - Wireless (OK for Linux, not recommended for z/OS)
 - ▶ USB
 - Required for 1091 hardware key



ADCD 1.11s Software Products Licensed for Use with RDZ-UT V.8.0.1

- z/OS Version 1 Release 11
- IBM Ported Tools for z/OS 1.14
- IBM Print Services Facility for z/OS V4.2
- IBM REXX/370 Compiler & IBM Library for REXX/370
- IBM AFP(TM) Font Collection for VSE
- IBM Enterprise COBOL for z/OS V4.2
- IBM XML Toolkit for z/OS V1.10
- IBM 31-bit SDK for z/OS, Java 2 Technology Edition V5.0
- IBM 64-bit SDK for z/OS, Java 2 Technology Edition V5.0
- IBM 31-bit SDK for z/OS, Java Technology Edition, V6
- IBM 64-bit SDK for z/OS, Java Technology Edition, V6
- IBM Debug Tool for z/OS V9.1
- IBM Enterprise PL/I for z/OS V3.8
- IBM Tivoli NetView for z/OS V5.3
- IBM z/OS Management Facility V1.10
- IBM Rational Developer for System z V7.5 (Remote System Explorer Component)
- IBM DB2 for z/OS V9.1
- IBM DB2 Administration Tool for z/OS V7.2
- IBM DB2 Object Comparison Tool for z/OS V7.2
- IBM DB2 Accessories Suite for z/OS V1.1
- IBM CICS Transaction Server for z/OS V4.1
- IBM Information Management System (IMS) Version 11.1.0
- IBM IMS Queue Control Facility for z/OS V2.1
- IBM IMS High Performance Change Accumulation Utility for z/OS V1.4
- IBM IMS High Performance Image Copy for z/OS V4.1.0
- IBM IMS(TM) Database Control Suite for z/OS V3.2
- IBM IMS Library Integrity Utilities for z/OS V2.1
- IBM WebSphere Application Server for z/OS V7.0
- IBM Tivoli Workload Scheduler for z/OS V8.5.0
- IBM WebSphere MQ for z/OS V7.0.0

* Custom software stacks may be available at additional cost



www.ibm/software/rational

D:\Proposed Presentations_Eventos\One_day_In_Life\System_Summit_Jan_2011\One_Day_In_Life_Jan_2011\One_Day_In_Life_Jan_2011.html