



IBM System z Software

P4 – Implementing a BRMS Solution

ABRD & ISIS

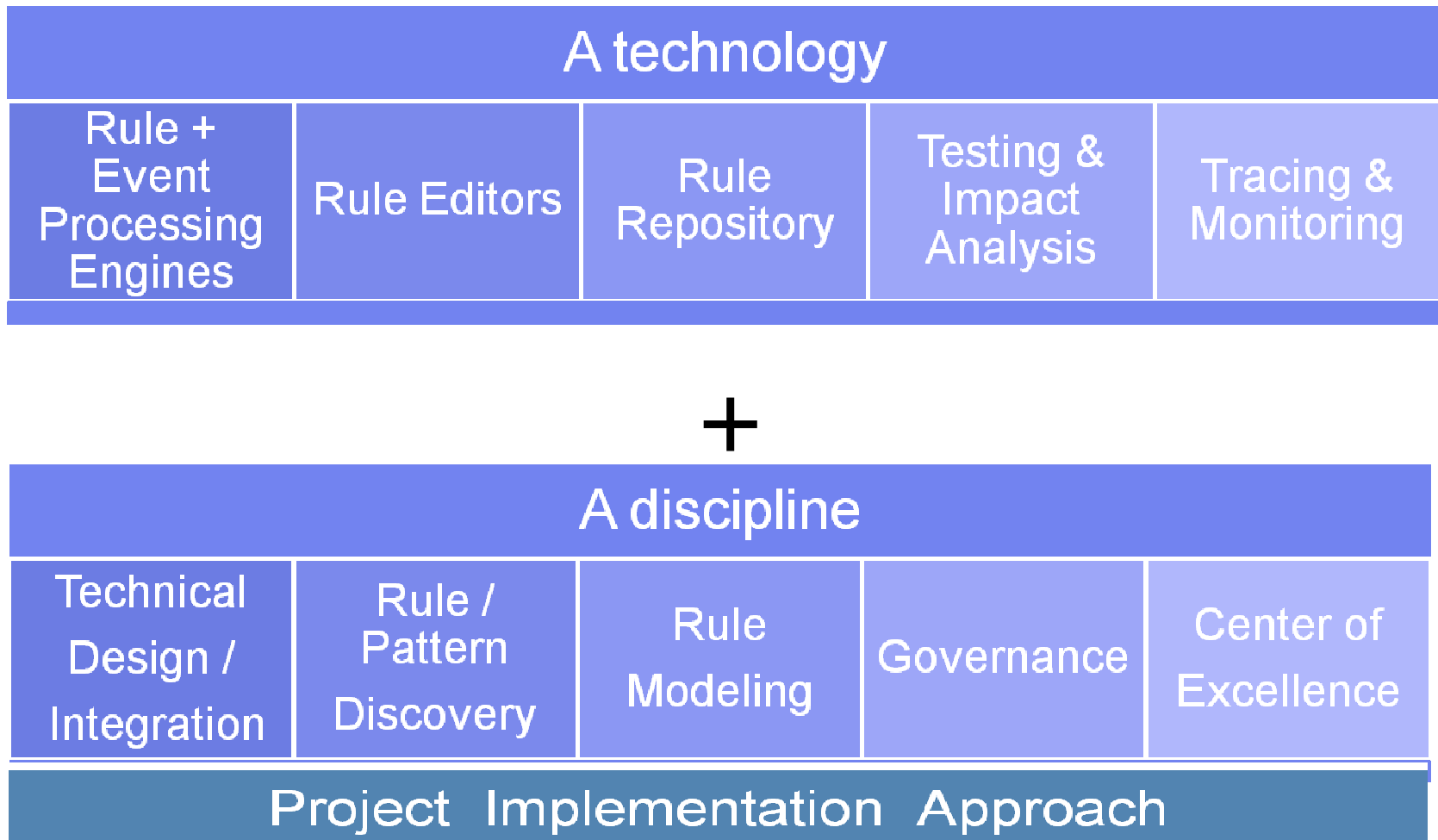
**Revitalizing Your WebSphere:
*Business Rules with ILOG and Rational Software on System z***



Agenda

- Developing and using a Methodology
- High Level Project Plan Guidelines
- Importance of Setting Milestones





ILOG Business Rule Methodology

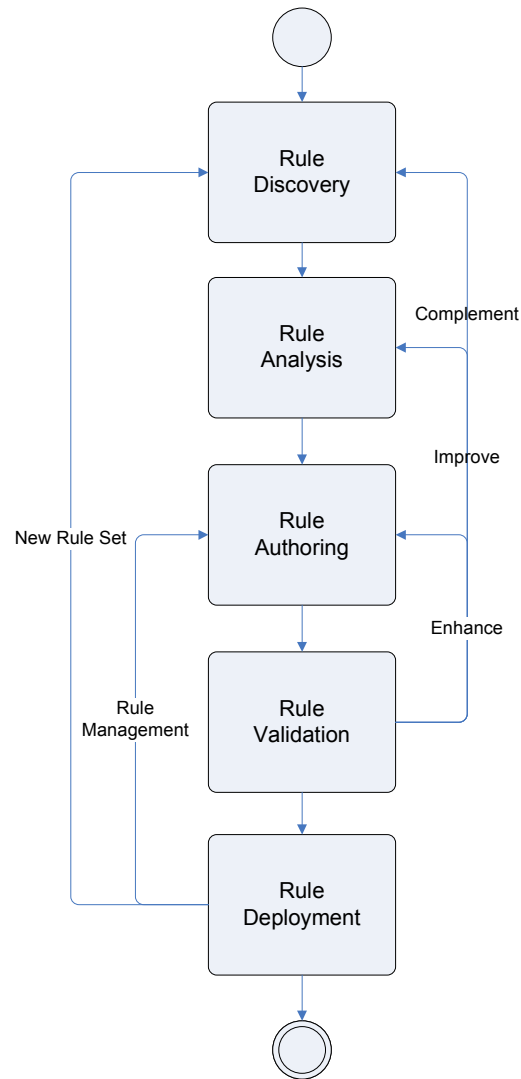


- *ABRD*: Agile Business Rule Development
- *Access*: public
- *Scope*: generic Business Rule methodology and best practices
- *ISIS*: IBM Solution Implementation Standard
- *Access*: private (IBM Lab Services)
- *Scope*: ABRD + IBM Product-specific best practices, including project management

What is ABRD?

- Agile Business Rules Development (ABRD) is a pragmatic approach to the development of a Business Rule Applications:
 - ▶ Iterative
 - ▶ Vendor-neutral
 - ▶ Based on Agile Software Development principals
 - <http://www.agilemanifesto.org/>
- ABRD is available as a plug-in to the Eclipse Process Framework (EPF)
 - ▶ Extension of the Open Unified Process (OpenUP)
 - ▶ Meets the OpenUP core principals of software app. development:
 - Collaborate to align interests and share understanding
 - Balance competing priorities to maximize stakeholder value
 - Focus on the architecture early to minimize risks and organize development
 - Evolve to continuously obtain feedback and improve

Agile Business Rule Development



Discovery

- Select one rule set and its discovery roadmap
- Harvest rule using short workshop sessions

Analysis & Design

- Prepare the rule for implementation

Authoring

- Develop the JRules BOM, project structure
- Develop rule flow, rules, decision tables...

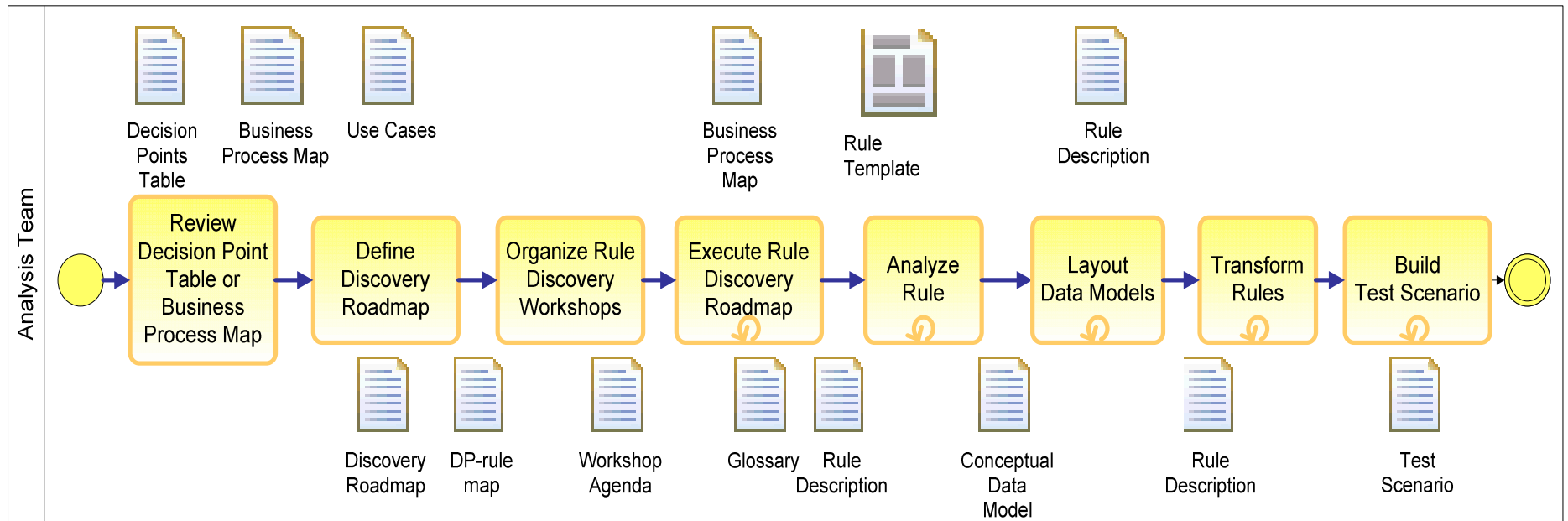
Validation

- Test in a Sandbox deployment environment
- Involve SME for feedback

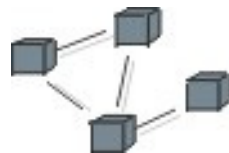
Deployment

- Use rule execution server staging platform

Rule discovery tasks



- Business analyst
- Rule analyst
- SME



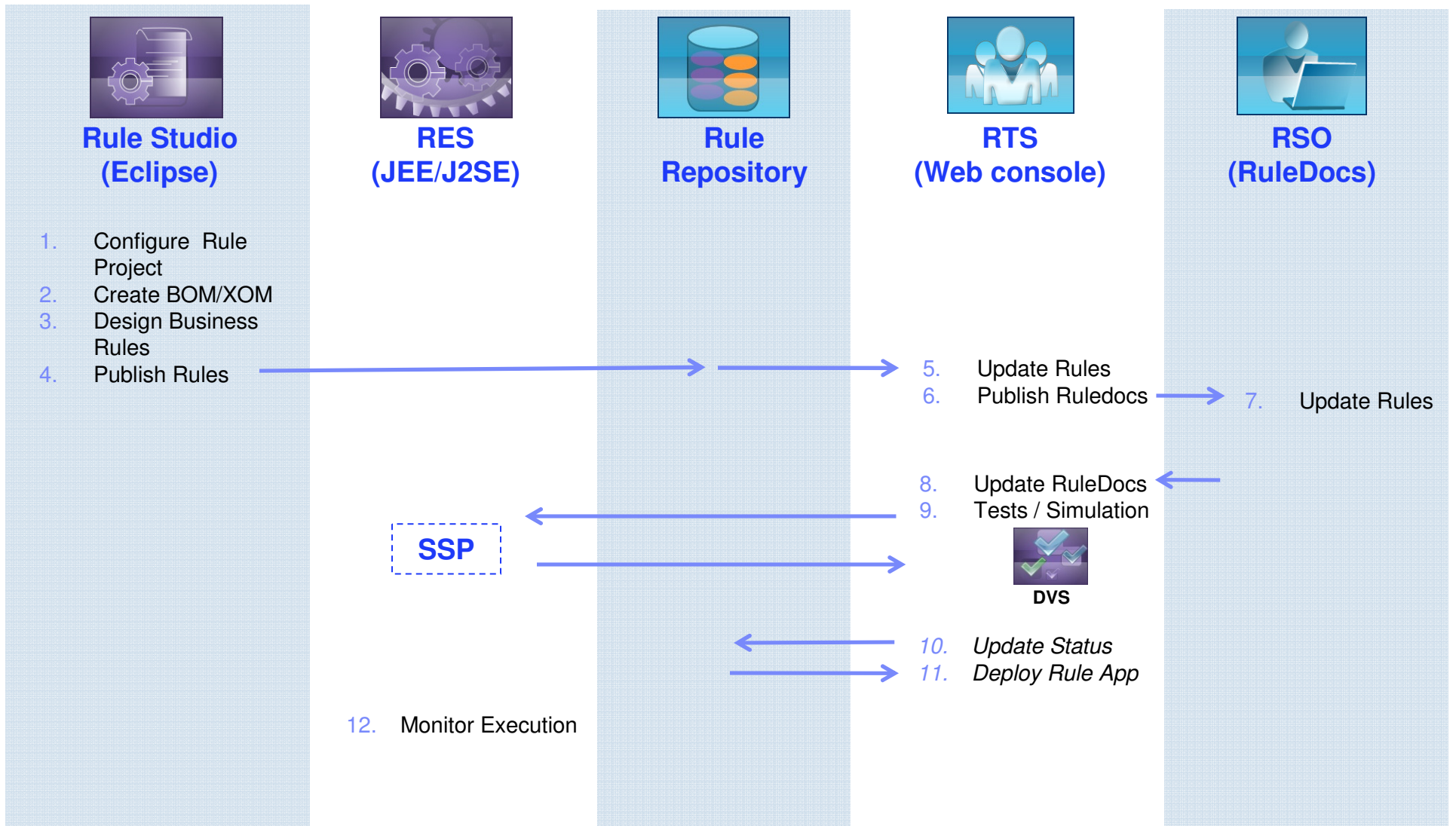
- Rule description document
- Fact model or entities diagram

BR and agility

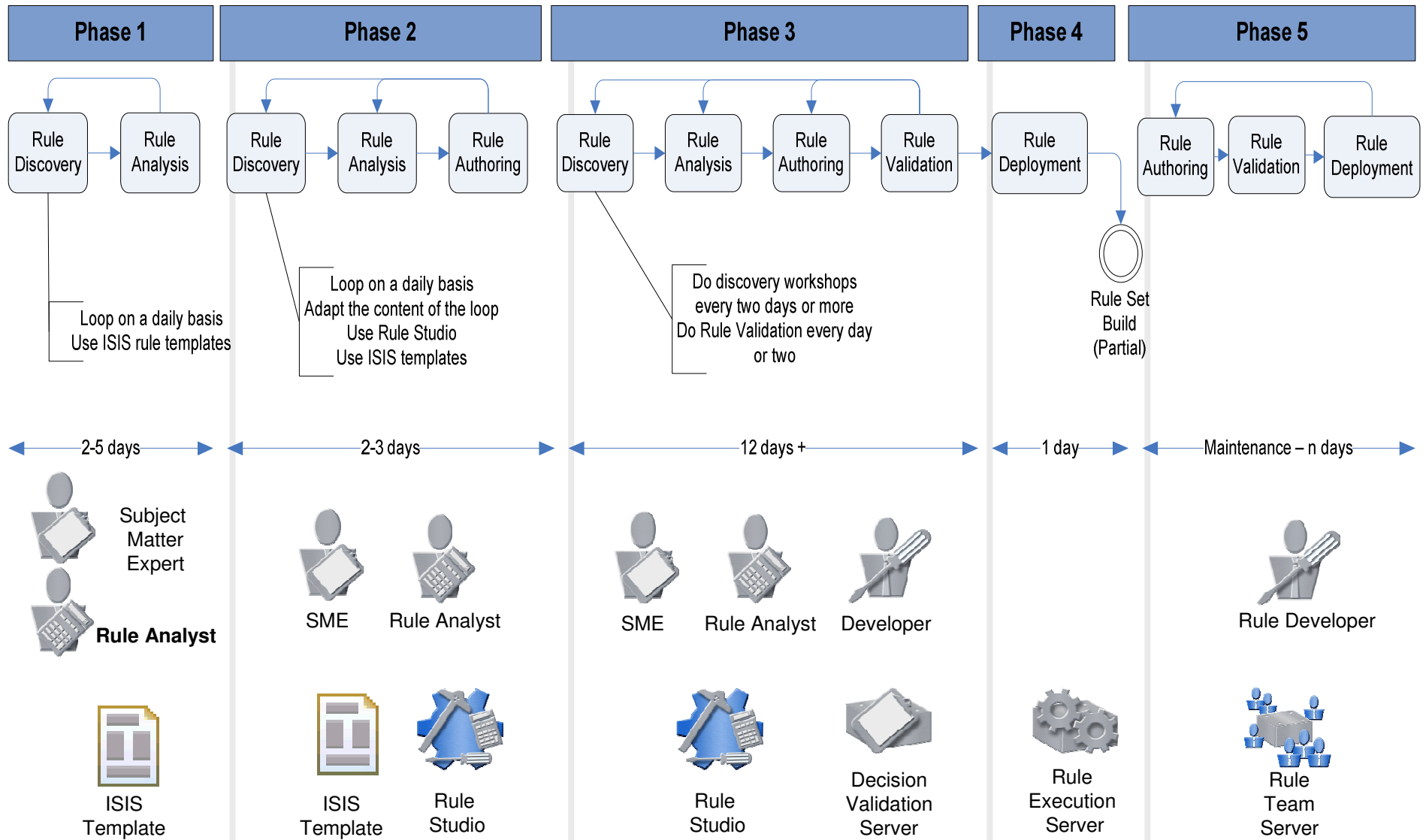
- Business rule modeling is an evolutionary process:
 - Frequent requirement and model changes
 - Collaboration (social): SME, business analysts, rule architect, rule developer
 - Minimum modeling artifacts: rule description, Conceptual Model, Business Object Model
 - Unforgiving honesty of working rules
- It is a perfect fit for the agile values:
 - Responding to change over following a plan
 - Individuals and interactions over processes and tools
 - Working software over comprehensive documentation
 - Customer collaboration over contract negotiation



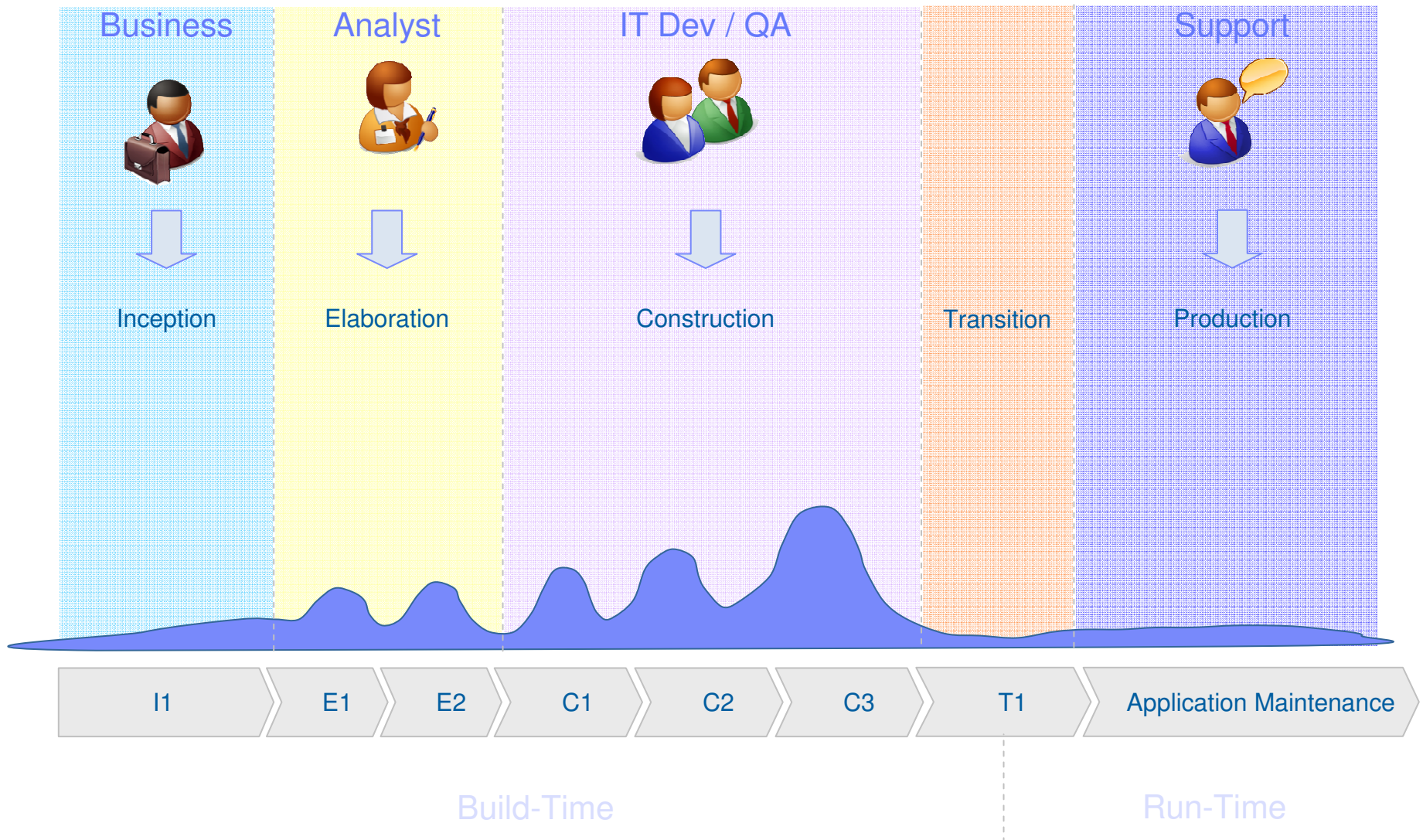
ILOG BRMS: Concept Of Operations



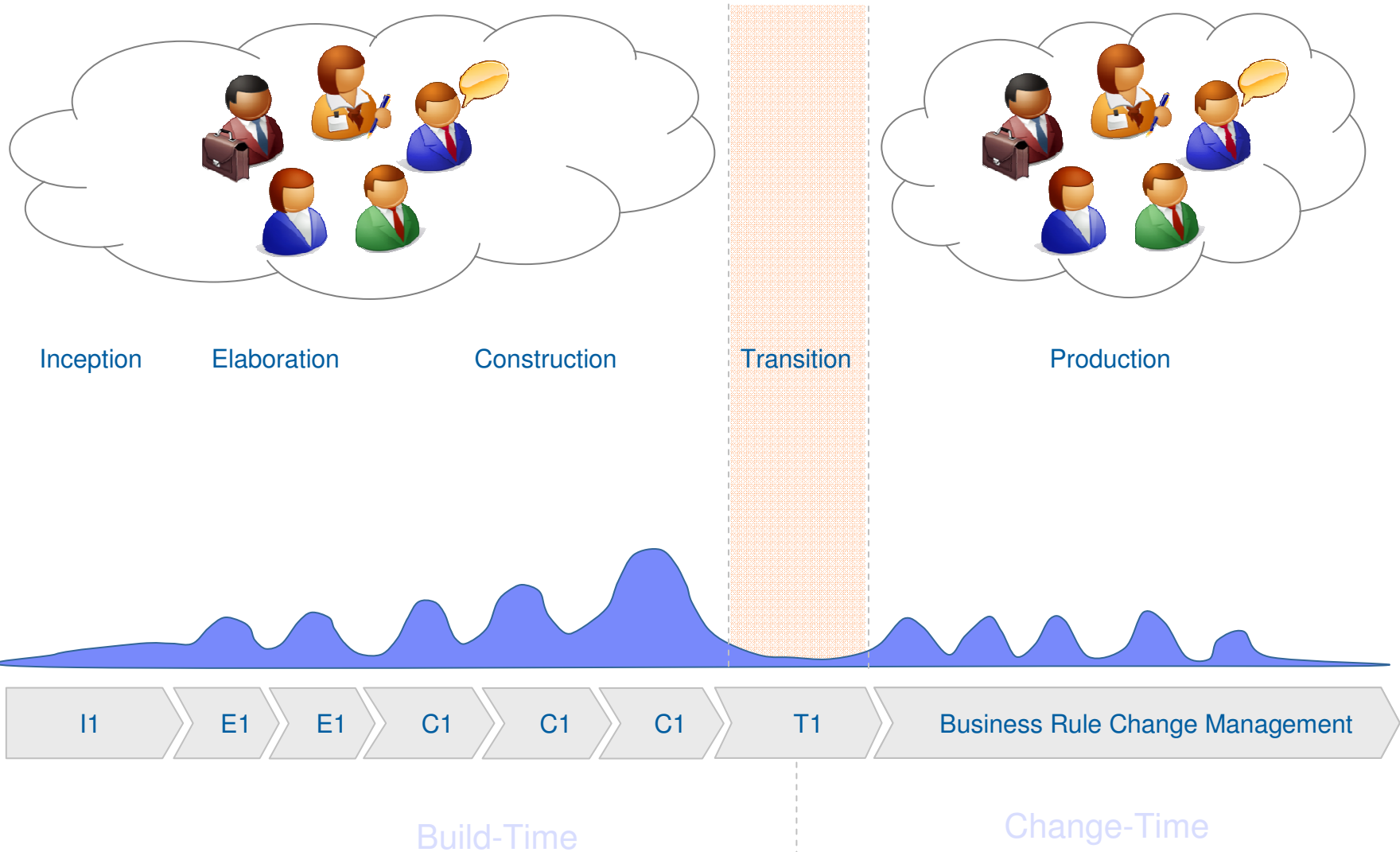
High Level Project Plan



Traditional Software Lifecycle



BRMS Software Lifecycle – Collaborative Working



Questions

djdesjardins@us.ibm.com

